

Data Path : Z:\pestpcbsrv\HPCHEM1\ECD\_0\Data\P0072425\  
 Data File : PO112489.D  
 Signal(s) : Signal #1: ECD1A.ch Signal #2: ECD2B.ch  
 Acq On : 25 Jul 2025 03:28  
 Operator : YP/AJ  
 Sample : Q2684-01MSD  
 Misc :  
 ALS Vial : 32 Sample Multiplier: 1

Instrument :  
 ECD\_0  
 ClientSampleId :  
 PL-02-07232025MSD

Integration File signal 1: autoint1.e  
 Integration File signal 2: autoint2.e  
 Quant Time: Jul 25 06:25:14 2025  
 Quant Method : Z:\pestpcbsrv\HPCHEM1\ECD\_0\methods\P0072325.M  
 Quant Title : GC EXTRACTABLES  
 QLast Update : Thu Jul 24 04:54:06 2025  
 Response via : Initial Calibration  
 Integrator: ChemStation

Volume Inj. : 2 µl  
 Signal #1 Phase : ZB-MR1 Signal #2 Phase: ZB-MR2  
 Signal #1 Info : 30Mx0.32mmx 0.50µ Signal #2 Info : 30M x 0.32mm x 0.25µm

Compound	RT#1	RT#2	Resp#1	Resp#2	ng/ml	ng/ml
-----						
System Monitoring Compounds						
1) SA Tetrachlo...	3.669	3.663	221.6E6	106.6E6	27.248	21.460
2) SA Decachlor...	8.694	8.641	82780397	23623608	11.321	13.368
Target Compounds						
3) L1 AR-1016-1	4.754	4.737	90195985	73622051	336.093	420.681 #
4) L1 AR-1016-2	4.772	4.755	137.7E6	97998221	339.007	376.200
5) L1 AR-1016-3	4.829	4.930	93823220	48942554	358.550	359.960
6) L1 AR-1016-4	4.949	4.972	69085278	65474739	326.118	589.412 #
7) L1 AR-1016-5	5.212	5.188	206.0E6	91138569	938.417	635.985 #
8) L2 AR-1221-1	3.876	3.870	10817057	16753152	111.909	249.059 #
9) L2 AR-1221-2	3.965	3.957	9906796	22723977	137.859	447.957 #
10) L2 AR-1221-3	4.041	4.031	44366280	40122034	186.639	253.089 #
11) L3 AR-1232-1	4.041	4.031	44366280	40122034	237.280	317.045 #
12) L3 AR-1232-2	4.533	4.755	85520817	97998221	794.621	747.195
13) L3 AR-1232-3	4.772	4.930	137.7E6	48942554	665.750	728.346
14) L3 AR-1232-4	4.949	5.016	69085278	43799770	659.586	732.081
15) L3 AR-1232-5	4.991	5.188	93485557	91138569	1377.200	1397.766
16) L4 AR-1242-1	4.754	4.737	90195985	73622051	364.293	464.803 #
17) L4 AR-1242-2	4.772	4.755	137.7E6	97998221	372.307	419.394
18) L4 AR-1242-3	4.829	4.930	93823220	48942554	396.451	403.853
19) L4 AR-1242-4	4.949	5.016	69085278	43799770	355.599	356.852
20) L4 AR-1242-5	5.599	5.534	56236619	47166892	262.892	293.014
21) L5 AR-1248-1	4.754	4.737	90195985	73622051	481.794	605.896 #
22) L5 AR-1248-2	4.991	4.972	93485557	65474739	366.449	386.784
23) L5 AR-1248-3	5.212	5.016	206.0E6	43799770	599.227	246.555 #
24) L5 AR-1248-4	5.559	5.188	65281105	91138569	128.486	437.421 #
25) L5 AR-1248-5	5.599	5.573	56236619	44442342	160.864	206.935 #
26) L6 AR-1254-1	5.559	5.534	65281105	47166892	118.918	143.530
27) L6 AR-1254-2	5.706	5.681	80410563	54567664	165.481	188.495
28) L6 AR-1254-3	6.128	6.098	137.4E6	75995393	184.673	177.783
29) L6 AR-1254-4	6.343	6.310	15844793	7340202	28.824	26.891
30) L6 AR-1254-5	6.760	6.726	194.4E6	108.1E6	274.627	323.738
31) L7 AR-1260-1	6.244	6.213	136.3E6	84762333	310.318	341.081
32) L7 AR-1260-2	6.433	6.401	191.6E6	104.4E6	278.483	316.991
33) L7 AR-1260-3	6.799	6.552	146.3E6	76225121	248.743	296.687
34) L7 AR-1260-4	7.059	7.022	107.7E6	50639520	238.897	264.698
35) L7 AR-1260-5	7.302	7.264	303.6E6	120.8E6	245.032	293.066
36) L8 AR-1262-1	6.799	6.765	146.3E6	74951532	157.409	180.681
37) L8 AR-1262-2	7.302	7.264	303.6E6	120.8E6	204.187	234.315
38) L8 AR-1262-3	7.585	7.545	54706711	22011170	92.684	118.006 #
39) L8 AR-1262-4	7.648	7.608	216.9E6	69528310	218.168	241.331
40) L8 AR-1262-5	8.145	8.102	58978267	16254928	135.876	163.361
41) L9 AR-1268-1	7.585	7.545	54706711	22011170	31.241	42.504 #

Data Path : Z:\pestpcbsrv\HPCHEM1\ECD\_0\Data\P0072425\  
 Data File : P0112489.D  
 Signal(s) : Signal #1: ECD1A.ch Signal #2: ECD2B.ch  
 Acq On : 25 Jul 2025 03:28  
 Operator : YP/AJ  
 Sample : Q2684-01MSD  
 Misc :  
 ALS Vial : 32 Sample Multiplier: 1

**Instrument :**  
 ECD\_0  
**ClientSampleId :**  
 PL-02-07232025MSD

Integration File signal 1: autoint1.e  
 Integration File signal 2: autoint2.e  
 Quant Time: Jul 25 06:25:14 2025  
 Quant Method : Z:\pestpcbsrv\HPCHEM1\ECD\_0\methods\P0072325.M  
 Quant Title : GC EXTRACTABLES  
 QLast Update : Thu Jul 24 04:54:06 2025  
 Response via : Initial Calibration  
 Integrator: ChemStation

Volume Inj. : 2 µl  
 Signal #1 Phase : ZB-MR1 Signal #2 Phase: ZB-MR2  
 Signal #1 Info : 30Mx0.32mmx 0.50µ Signal #2 Info : 30M x 0.32mm x 0.25µm

	Compound	RT#1	RT#2	Resp#1	Resp#2	ng/ml	ng/ml
42)	L9 AR-1268-2	7.648	7.608	216.9E6	69528310	147.245	163.571
43)	L9 AR-1268-3	7.856	7.815	4603200	1787596	3.676	5.564 #
44)	L9 AR-1268-4	8.145	8.102	58978267	16254928	122.396	146.052
45)	L9 AR-1268-5	8.439	8.390	18673870	5773434	5.562	7.890 #

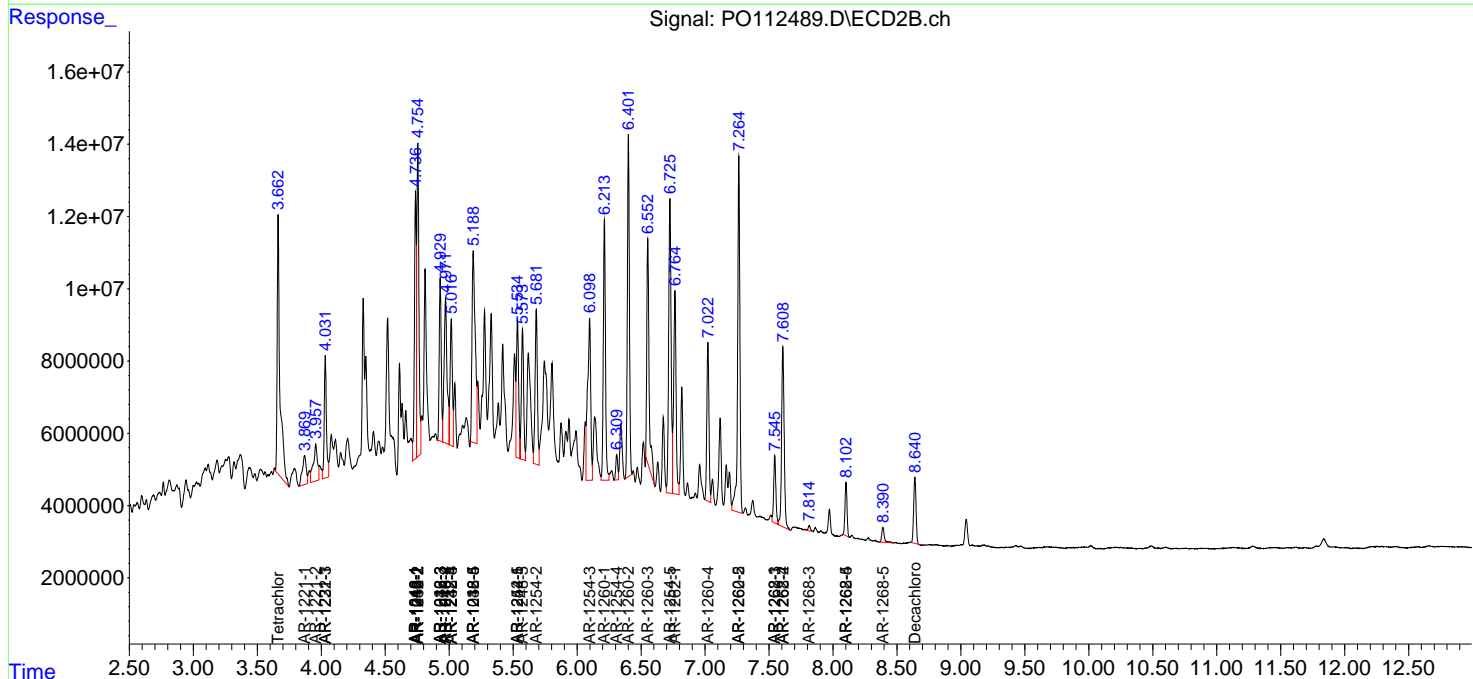
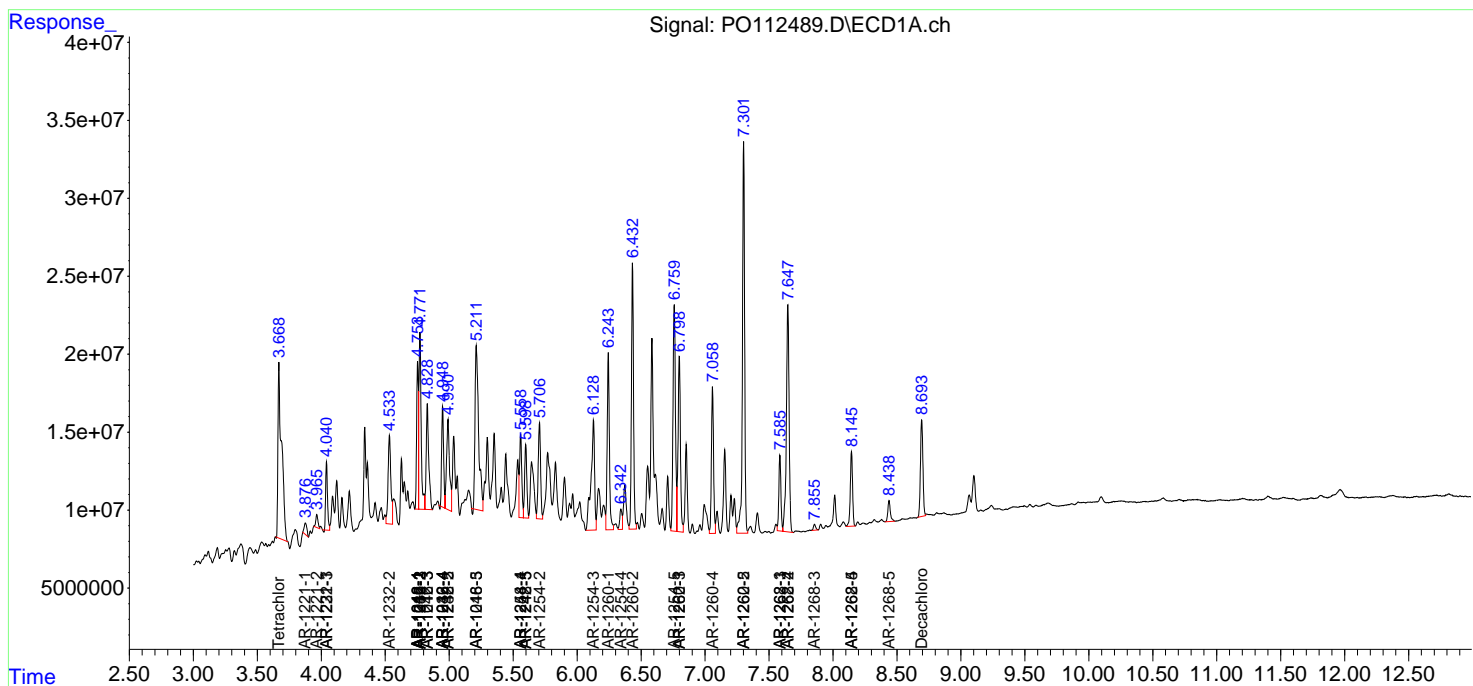
(f)=RT Delta > 1/2 Window (#)=Amounts differ by > 25% (m)=manual int.

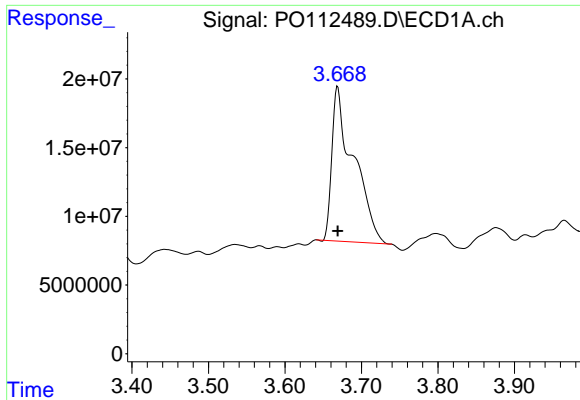
Data Path : Z:\pestpcbsrv\HPCHEM1\ECD\_O\Data\PO072425\  
 Data File : PO112489.D  
 Signal(s) : Signal #1: ECD1A.ch Signal #2: ECD2B.ch  
 Acq On : 25 Jul 2025 03:28  
 Operator : YP/AJ  
 Sample : Q2684-01MSD  
 Misc :  
 ALS Vial : 32 Sample Multiplier: 1

Instrument :  
 ECD\_O  
 ClientSampleId :  
 PL-02-07232025MSD

Integration File signal 1: autoint1.e  
 Integration File signal 2: autoint2.e  
 Quant Time: Jul 25 06:25:14 2025  
 Quant Method : Z:\pestpcbsrv\HPCHEM1\ECD\_O\methods\PO072325.M  
 Quant Title : GC EXTRACTABLES  
 QLast Update : Thu Jul 24 04:54:06 2025  
 Response via : Initial Calibration  
 Integrator: ChemStation

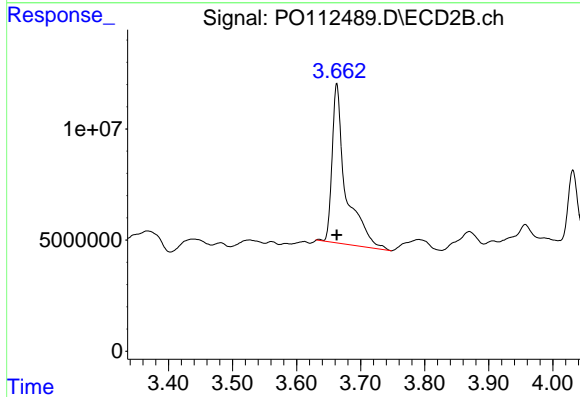
Volume Inj. : 2 µl  
 Signal #1 Phase : ZB-MR1 Signal #2 Phase: ZB-MR2  
 Signal #1 Info : 30Mx0.32mmx 0.50µ Signal #2 Info : 30M x 0.32mm x 0.25µm



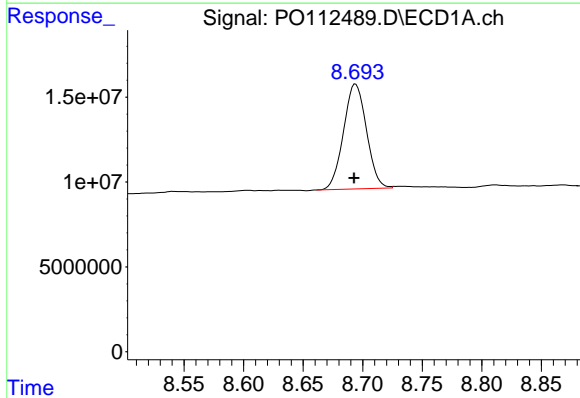


#1 Tetrachloro-m-xylene  
 R.T.: 3.669 min  
 Delta R.T.: 0.000 min  
 Response: 221571376  
 Conc: 27.25 ng/ml

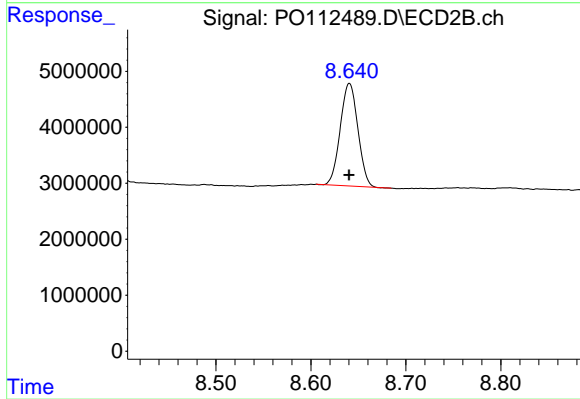
Instrument :  
 ECD\_O  
 ClientSampleId :  
 PL-02-07232025MSD



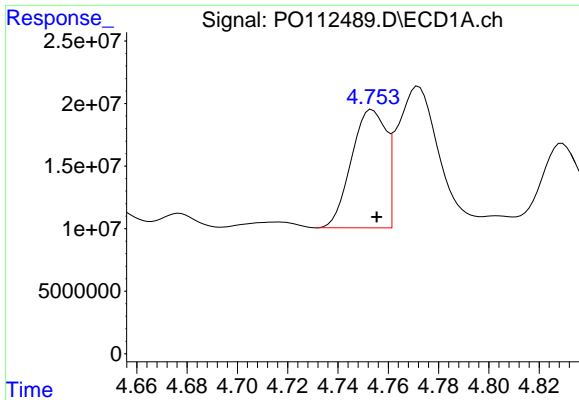
#1 Tetrachloro-m-xylene  
 R.T.: 3.663 min  
 Delta R.T.: 0.000 min  
 Response: 106637046  
 Conc: 21.46 ng/ml



#2 Decachlorobiphenyl  
 R.T.: 8.694 min  
 Delta R.T.: 0.001 min  
 Response: 82780397  
 Conc: 11.32 ng/ml



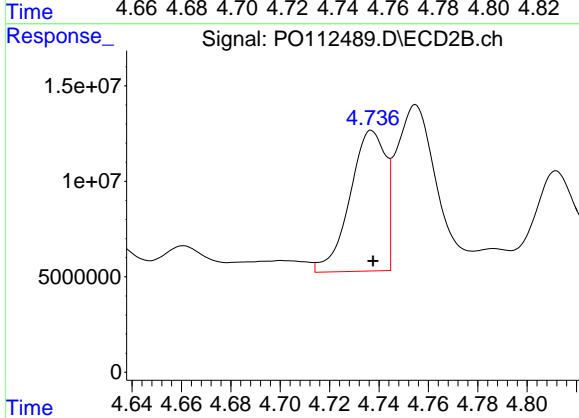
#2 Decachlorobiphenyl  
 R.T.: 8.641 min  
 Delta R.T.: 0.000 min  
 Response: 23623608  
 Conc: 13.37 ng/ml



#3 AR-1016-1

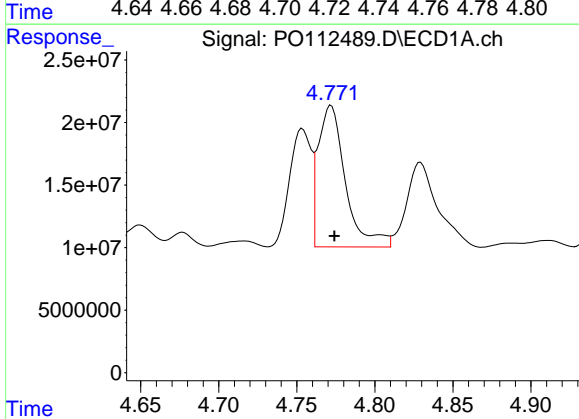
R.T.: 4.754 min  
 Delta R.T.: -0.002 min  
 Response: 90195985  
 Conc: 336.09 ng/ml

Instrument :  
 ECD\_O  
 ClientSampleId :  
 PL-02-07232025MSD



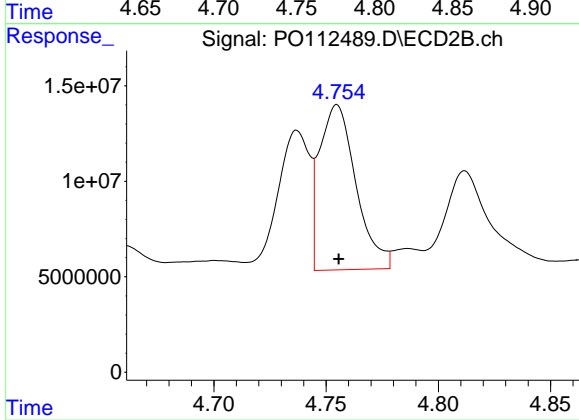
#3 AR-1016-1

R.T.: 4.737 min  
 Delta R.T.: 0.000 min  
 Response: 73622051  
 Conc: 420.68 ng/ml



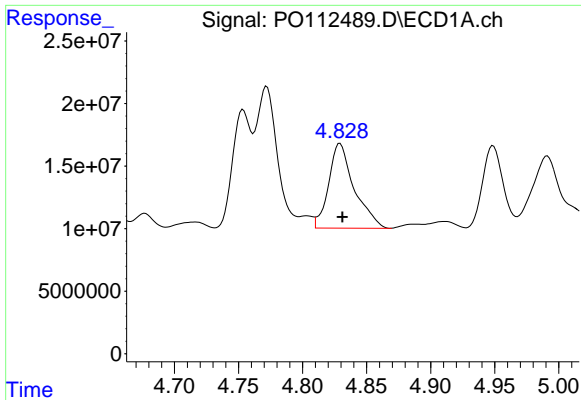
#4 AR-1016-2

R.T.: 4.772 min  
 Delta R.T.: -0.002 min  
 Response: 137676642  
 Conc: 339.01 ng/ml



#4 AR-1016-2

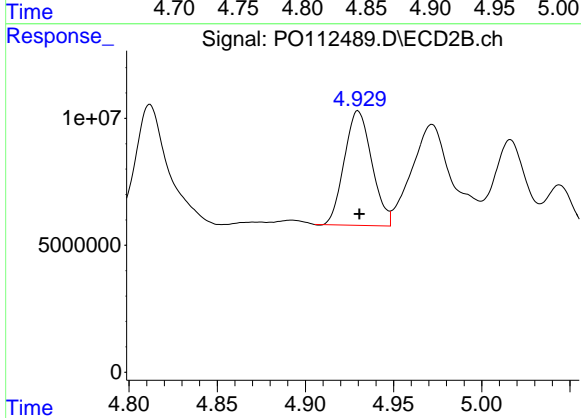
R.T.: 4.755 min  
 Delta R.T.: 0.000 min  
 Response: 97998221  
 Conc: 376.20 ng/ml



#5 AR-1016-3

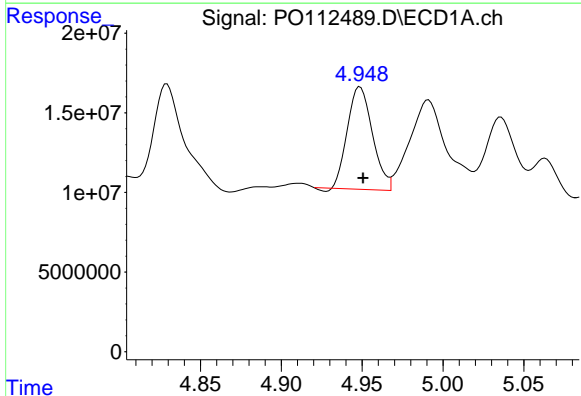
R.T.: 4.829 min  
 Delta R.T.: -0.002 min  
 Response: 93823220  
 Conc: 358.55 ng/ml

Instrument :  
 ECD\_O  
 ClientSampleId :  
 PL-02-07232025MSD



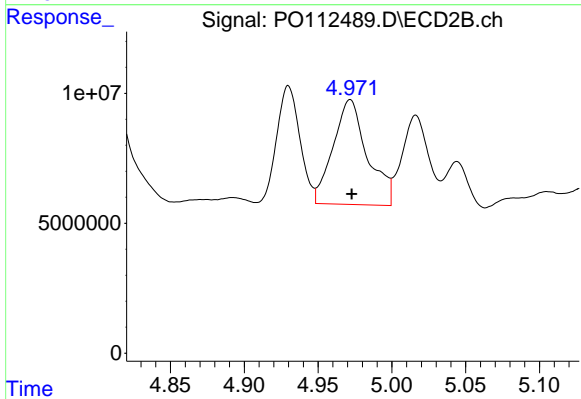
#5 AR-1016-3

R.T.: 4.930 min  
 Delta R.T.: 0.000 min  
 Response: 48942554  
 Conc: 359.96 ng/ml



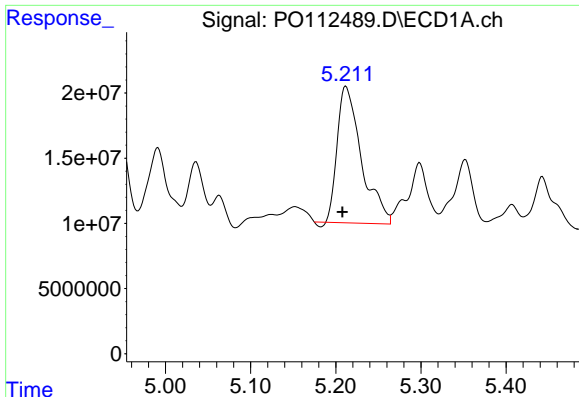
#6 AR-1016-4

R.T.: 4.949 min  
 Delta R.T.: -0.002 min  
 Response: 69085278  
 Conc: 326.12 ng/ml



#6 AR-1016-4

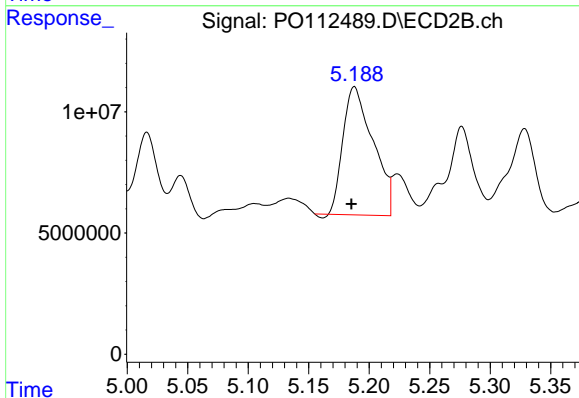
R.T.: 4.972 min  
 Delta R.T.: -0.001 min  
 Response: 65474739  
 Conc: 589.41 ng/ml



#7 AR-1016-5

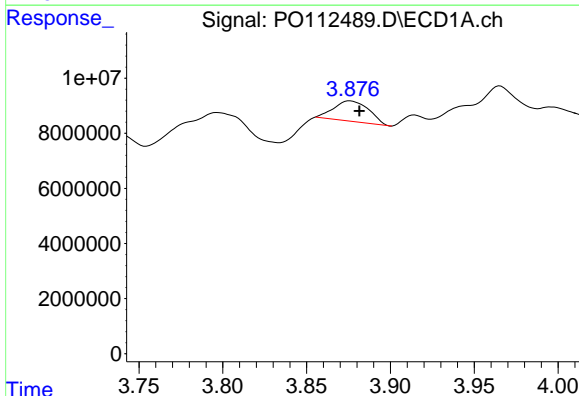
R.T.: 5.212 min  
 Delta R.T.: 0.005 min  
 Response: 205954931  
 Conc: 938.42 ng/ml

Instrument :  
 ECD\_O  
 ClientSampleId :  
 PL-02-07232025MSD



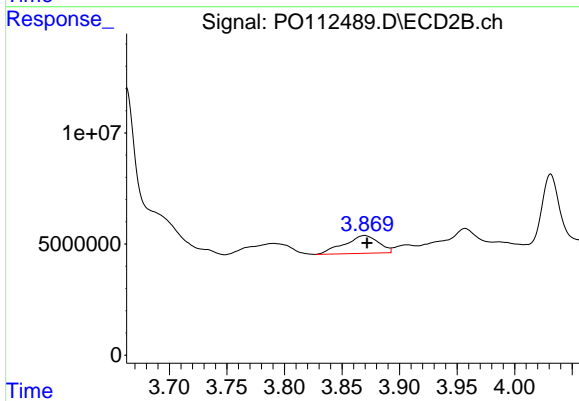
#7 AR-1016-5

R.T.: 5.188 min  
 Delta R.T.: 0.002 min  
 Response: 91138569  
 Conc: 635.99 ng/ml



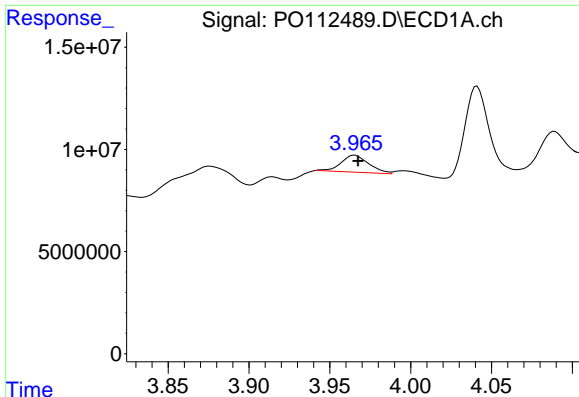
#8 AR-1221-1

R.T.: 3.876 min  
 Delta R.T.: -0.006 min  
 Response: 10817057  
 Conc: 111.91 ng/ml



#8 AR-1221-1

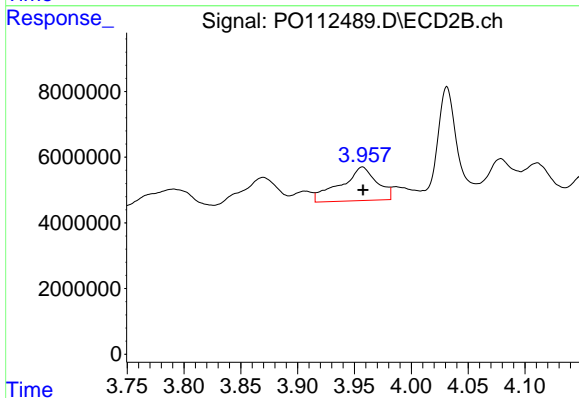
R.T.: 3.870 min  
 Delta R.T.: -0.002 min  
 Response: 16753152  
 Conc: 249.06 ng/ml



#9 AR-1221-2

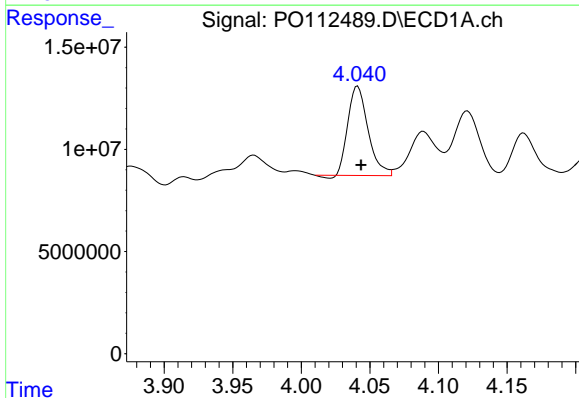
R.T.: 3.965 min  
 Delta R.T.: -0.002 min  
 Response: 9906796  
 Conc: 137.86 ng/ml

Instrument :  
 ECD\_O  
 ClientSampleId :  
 PL-02-07232025MSD



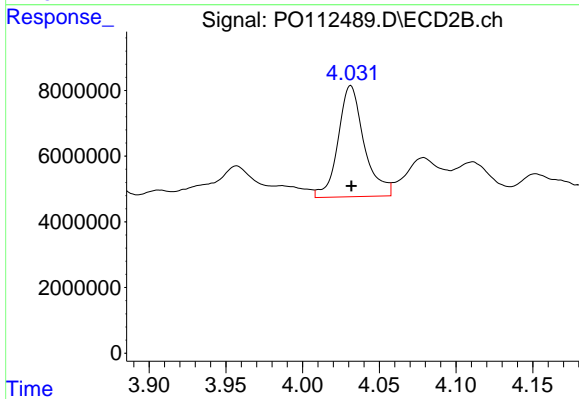
#9 AR-1221-2

R.T.: 3.957 min  
 Delta R.T.: 0.000 min  
 Response: 22723977  
 Conc: 447.96 ng/ml



#10 AR-1221-3

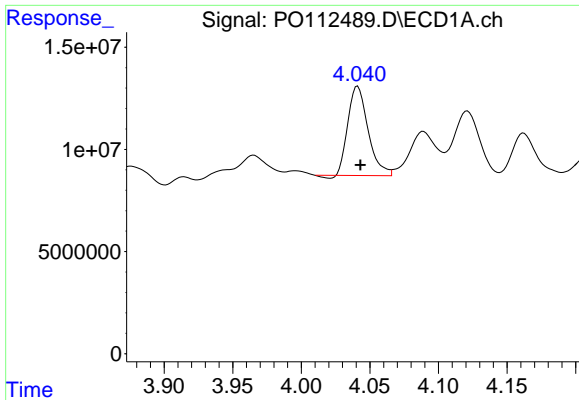
R.T.: 4.041 min  
 Delta R.T.: -0.002 min  
 Response: 44366280  
 Conc: 186.64 ng/ml



#10 AR-1221-3

R.T.: 4.031 min  
 Delta R.T.: 0.000 min  
 Response: 40122034  
 Conc: 253.09 ng/ml

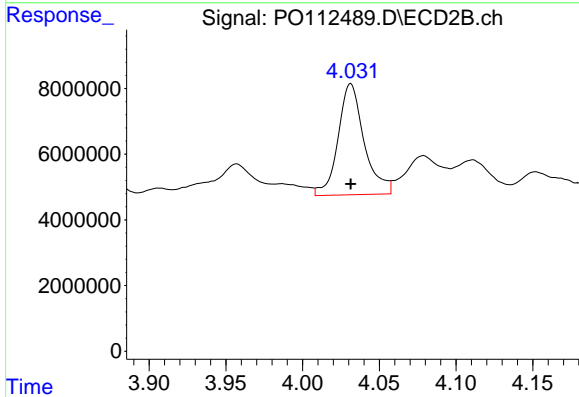




#11 AR-1232-1

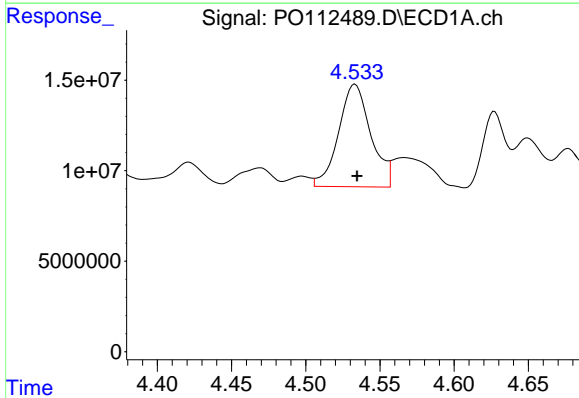
R.T.: 4.041 min  
 Delta R.T.: -0.002 min  
 Response: 44366280  
 Conc: 237.28 ng/ml

Instrument :  
 ECD\_O  
 ClientSampleId :  
 PL-02-07232025MSD



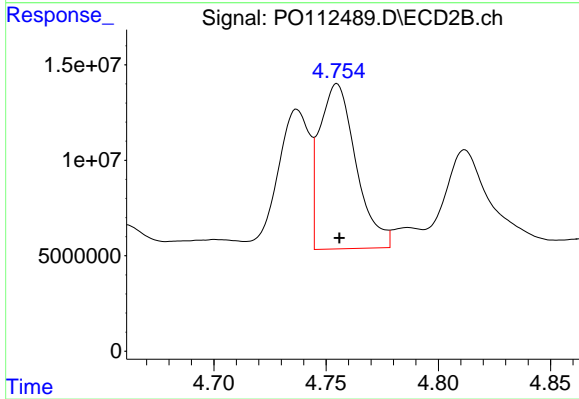
#11 AR-1232-1

R.T.: 4.031 min  
 Delta R.T.: 0.000 min  
 Response: 40122034  
 Conc: 317.05 ng/ml



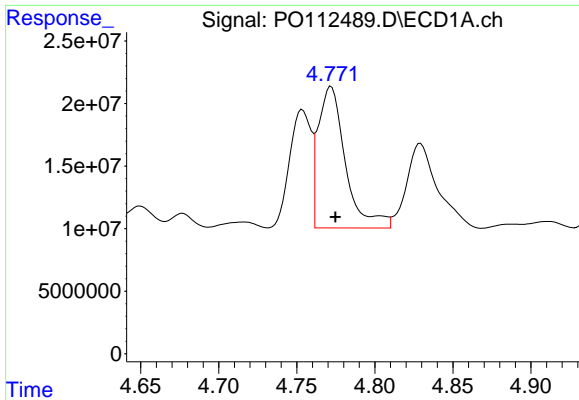
#12 AR-1232-2

R.T.: 4.533 min  
 Delta R.T.: -0.001 min  
 Response: 85520817  
 Conc: 794.62 ng/ml



#12 AR-1232-2

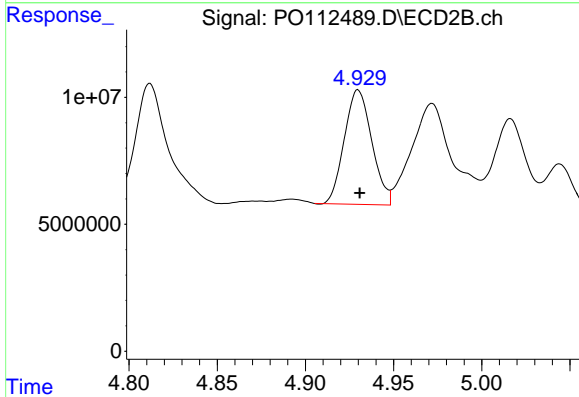
R.T.: 4.755 min  
 Delta R.T.: -0.001 min  
 Response: 97998221  
 Conc: 747.20 ng/ml



#13 AR-1232-3

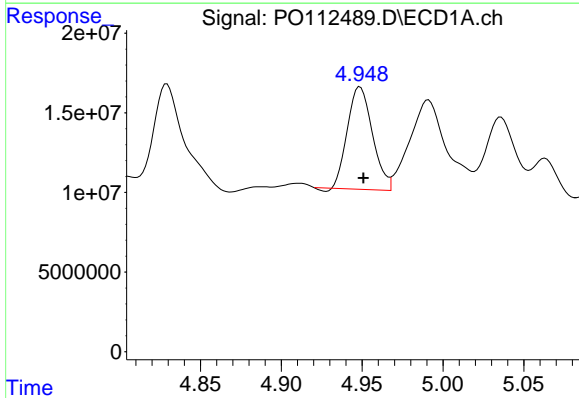
R.T.: 4.772 min  
 Delta R.T.: -0.003 min  
 Response: 137676642  
 Conc: 665.75 ng/ml

Instrument :  
 ECD\_O  
 ClientSampleId :  
 PL-02-07232025MSD



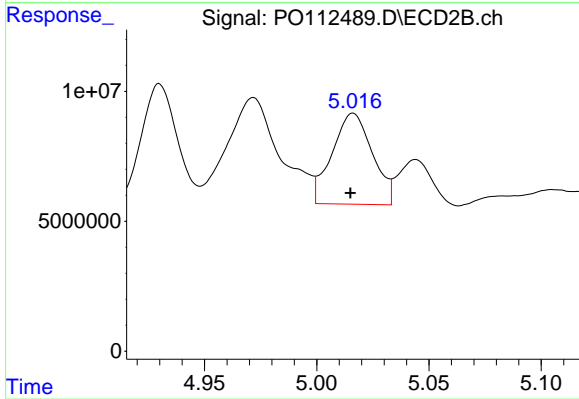
#13 AR-1232-3

R.T.: 4.930 min  
 Delta R.T.: 0.000 min  
 Response: 48942554  
 Conc: 728.35 ng/ml



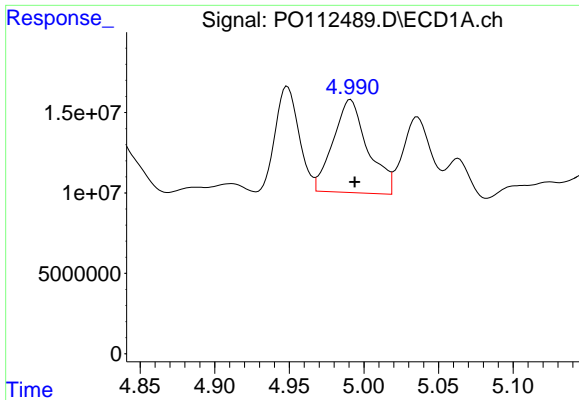
#14 AR-1232-4

R.T.: 4.949 min  
 Delta R.T.: -0.002 min  
 Response: 69085278  
 Conc: 659.59 ng/ml



#14 AR-1232-4

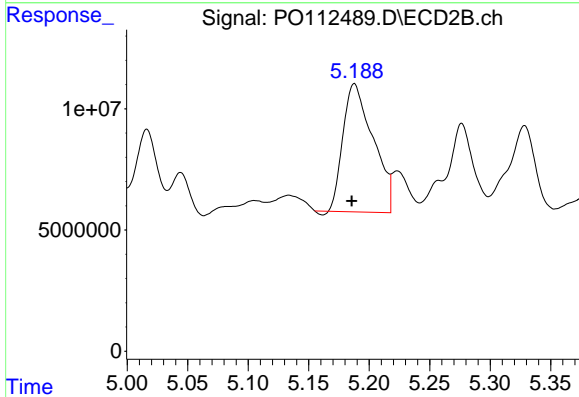
R.T.: 5.016 min  
 Delta R.T.: 0.001 min  
 Response: 43799770  
 Conc: 732.08 ng/ml



#15 AR-1232-5

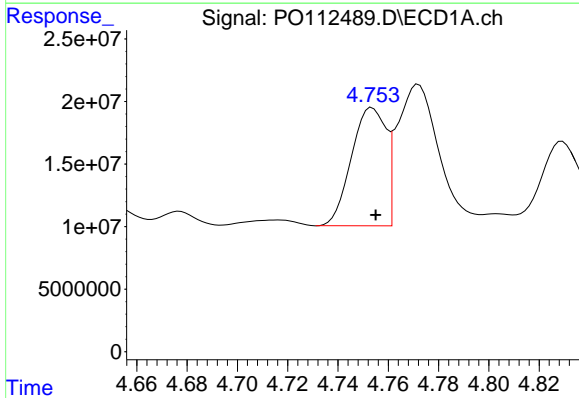
R.T.: 4.991 min  
 Delta R.T.: -0.003 min  
 Response: 93485557  
 Conc: 1377.20 ng/ml

Instrument :  
 ECD\_O  
 ClientSampleId :  
 PL-02-07232025MSD



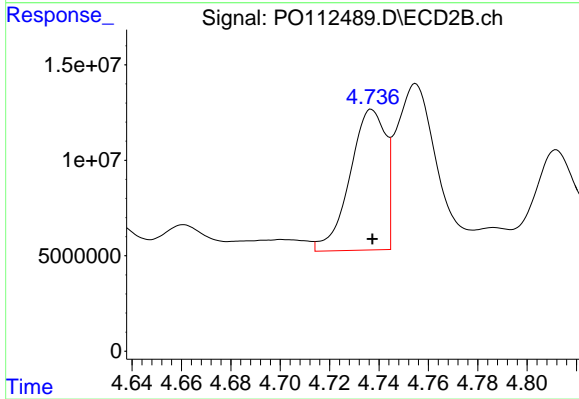
#15 AR-1232-5

R.T.: 5.188 min  
 Delta R.T.: 0.002 min  
 Response: 91138569  
 Conc: 1397.77 ng/ml



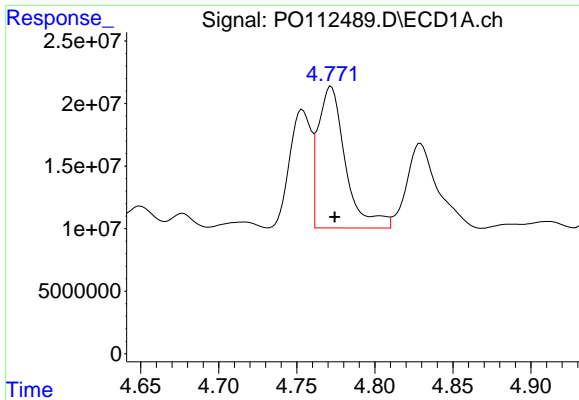
#16 AR-1242-1

R.T.: 4.754 min  
 Delta R.T.: -0.001 min  
 Response: 90195985  
 Conc: 364.29 ng/ml



#16 AR-1242-1

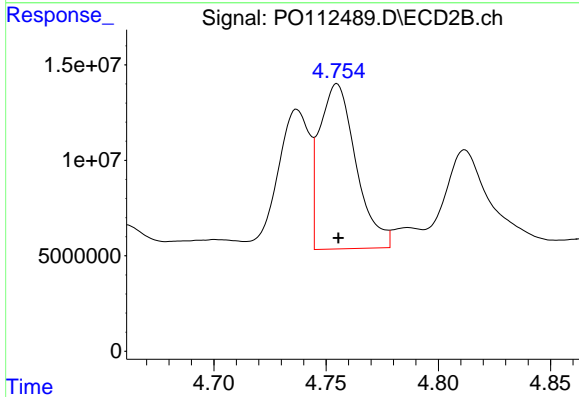
R.T.: 4.737 min  
 Delta R.T.: 0.000 min  
 Response: 73622051  
 Conc: 464.80 ng/ml



#17 AR-1242-2

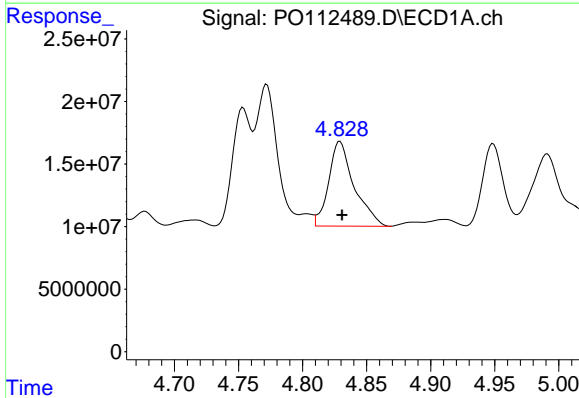
R.T.: 4.772 min  
 Delta R.T.: -0.002 min  
 Response: 137676642  
 Conc: 372.31 ng/ml

Instrument :  
 ECD\_O  
 ClientSampleId :  
 PL-02-07232025MSD



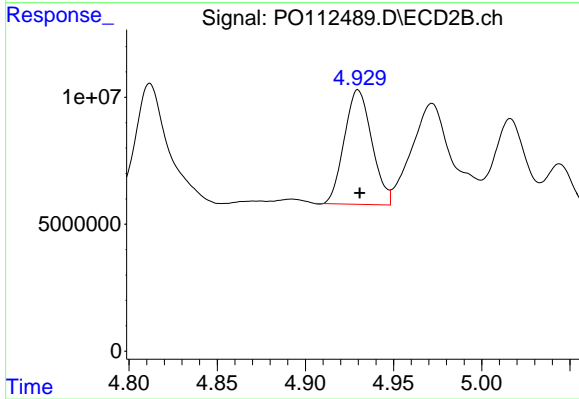
#17 AR-1242-2

R.T.: 4.755 min  
 Delta R.T.: 0.000 min  
 Response: 97998221  
 Conc: 419.39 ng/ml



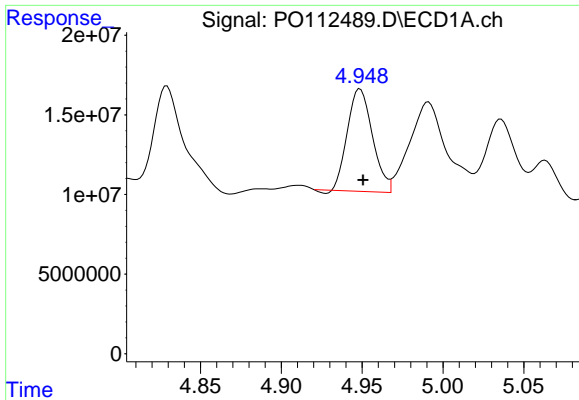
#18 AR-1242-3

R.T.: 4.829 min  
 Delta R.T.: -0.002 min  
 Response: 93823220  
 Conc: 396.45 ng/ml



#18 AR-1242-3

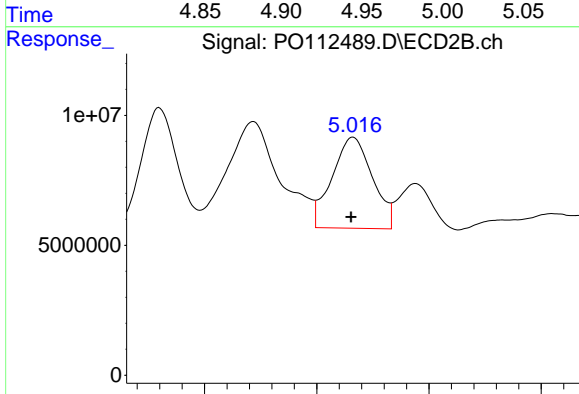
R.T.: 4.930 min  
 Delta R.T.: 0.000 min  
 Response: 48942554  
 Conc: 403.85 ng/ml



#19 AR-1242-4

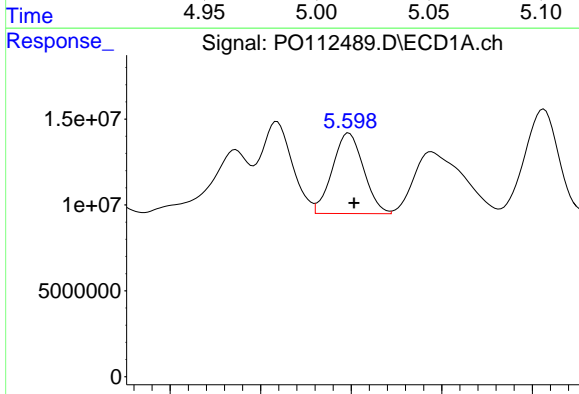
R.T.: 4.949 min  
 Delta R.T.: -0.002 min  
 Response: 69085278  
 Conc: 355.60 ng/ml

Instrument :  
 ECD\_O  
 ClientSampleId :  
 PL-02-07232025MSD



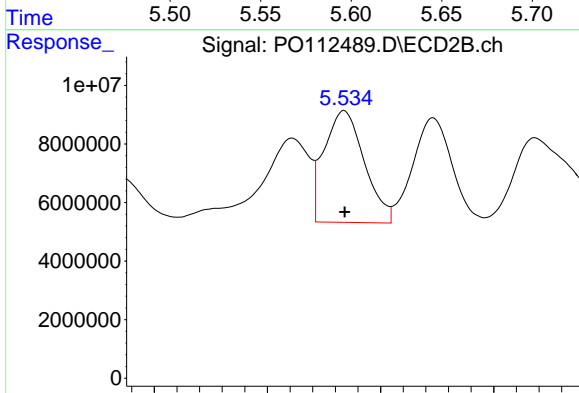
#19 AR-1242-4

R.T.: 5.016 min  
 Delta R.T.: 0.001 min  
 Response: 43799770  
 Conc: 356.85 ng/ml



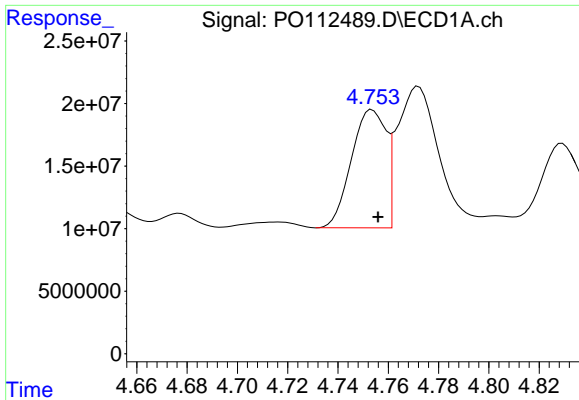
#20 AR-1242-5

R.T.: 5.599 min  
 Delta R.T.: -0.003 min  
 Response: 56236619  
 Conc: 262.89 ng/ml



#20 AR-1242-5

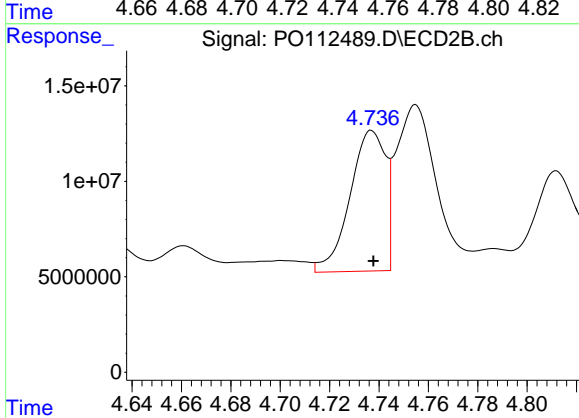
R.T.: 5.534 min  
 Delta R.T.: 0.000 min  
 Response: 47166892  
 Conc: 293.01 ng/ml



#21 AR-1248-1

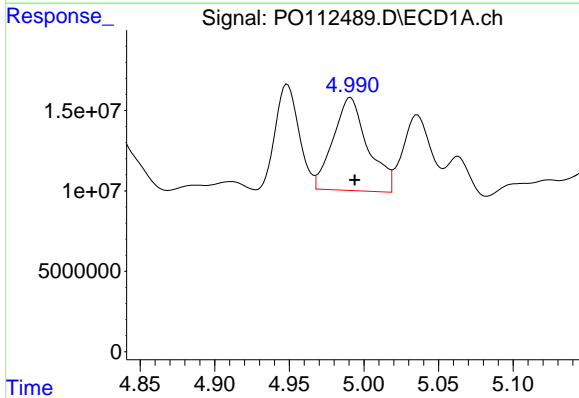
R.T.: 4.754 min  
 Delta R.T.: -0.002 min  
 Response: 90195985  
 Conc: 481.79 ng/ml

Instrument :  
 ECD\_O  
 ClientSampleId :  
 PL-02-07232025MSD



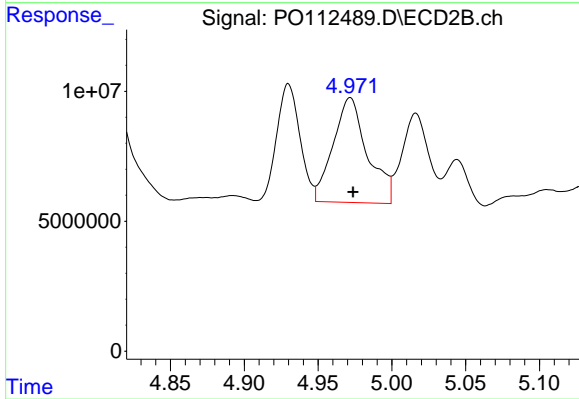
#21 AR-1248-1

R.T.: 4.737 min  
 Delta R.T.: 0.000 min  
 Response: 73622051  
 Conc: 605.90 ng/ml



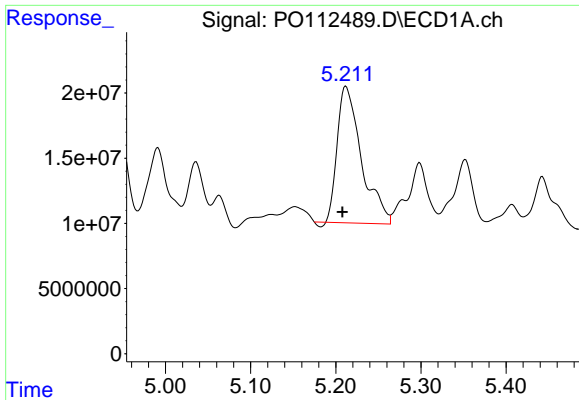
#22 AR-1248-2

R.T.: 4.991 min  
 Delta R.T.: -0.003 min  
 Response: 93485557  
 Conc: 366.45 ng/ml



#22 AR-1248-2

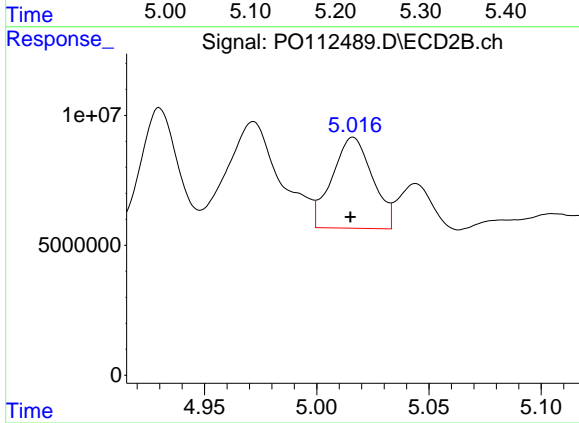
R.T.: 4.972 min  
 Delta R.T.: -0.002 min  
 Response: 65474739  
 Conc: 386.78 ng/ml



#23 AR-1248-3

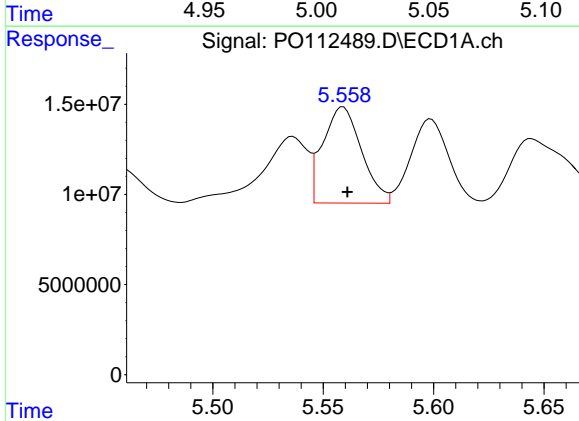
R.T.: 5.212 min  
Delta R.T.: 0.004 min  
Response: 205954931  
Conc: 599.23 ng/ml

Instrument :  
ECD\_O  
ClientSampleId :  
PL-02-07232025MSD



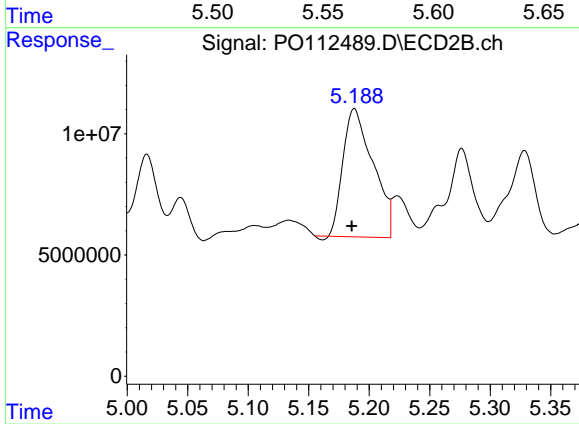
#23 AR-1248-3

R.T.: 5.016 min  
Delta R.T.: 0.001 min  
Response: 43799770  
Conc: 246.55 ng/ml



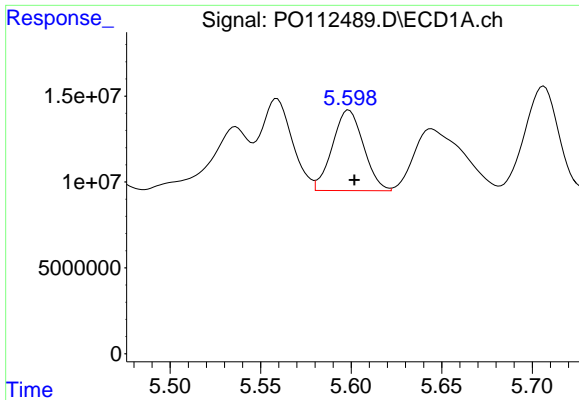
#24 AR-1248-4

R.T.: 5.559 min  
Delta R.T.: -0.002 min  
Response: 65281105  
Conc: 128.49 ng/ml



#24 AR-1248-4

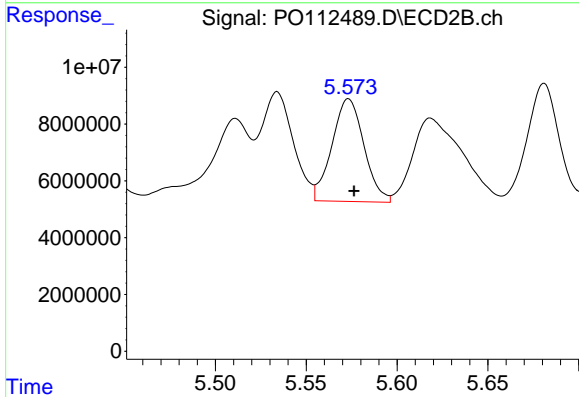
R.T.: 5.188 min  
Delta R.T.: 0.002 min  
Response: 91138569  
Conc: 437.42 ng/ml



#25 AR-1248-5

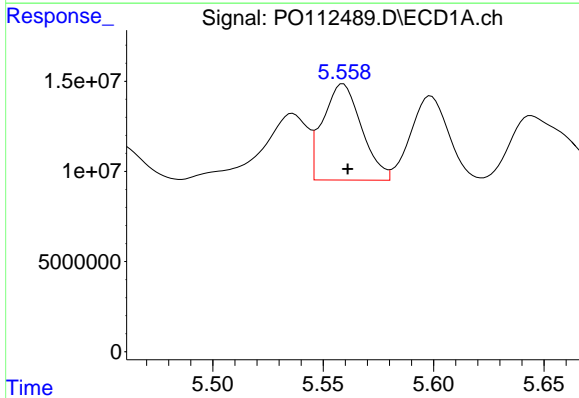
R.T.: 5.599 min  
 Delta R.T.: -0.003 min  
 Response: 56236619  
 Conc: 160.86 ng/ml

Instrument :  
 ECD\_O  
 ClientSampleId :  
 PL-02-07232025MSD



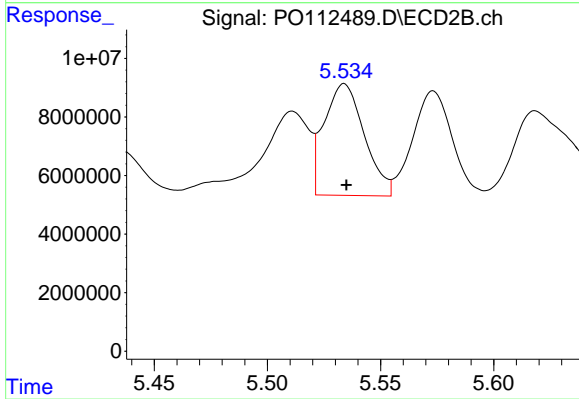
#25 AR-1248-5

R.T.: 5.573 min  
 Delta R.T.: -0.003 min  
 Response: 44442342  
 Conc: 206.93 ng/ml



#26 AR-1254-1

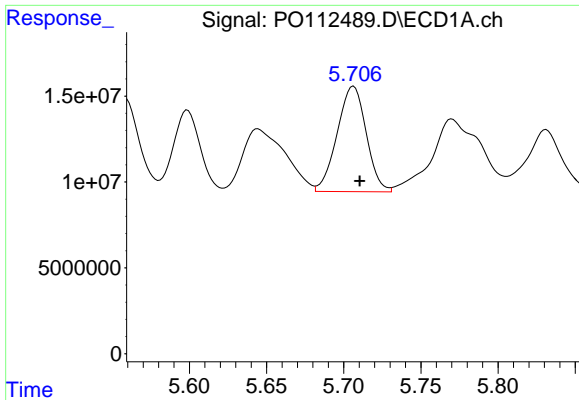
R.T.: 5.559 min  
 Delta R.T.: -0.002 min  
 Response: 65281105  
 Conc: 118.92 ng/ml



#26 AR-1254-1

R.T.: 5.534 min  
 Delta R.T.: 0.000 min  
 Response: 47166892  
 Conc: 143.53 ng/ml

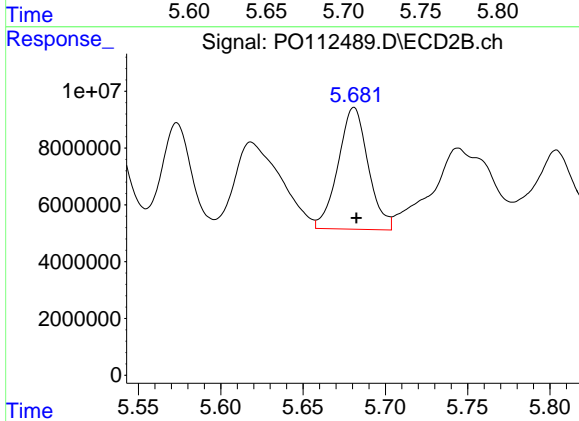




#27 AR-1254-2

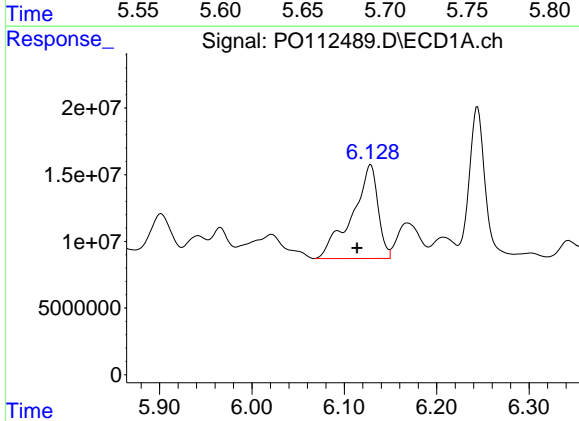
R.T.: 5.706 min  
 Delta R.T.: -0.004 min  
 Response: 80410563  
 Conc: 165.48 ng/ml

Instrument :  
 ECD\_O  
 ClientSampleId :  
 PL-02-07232025MSD



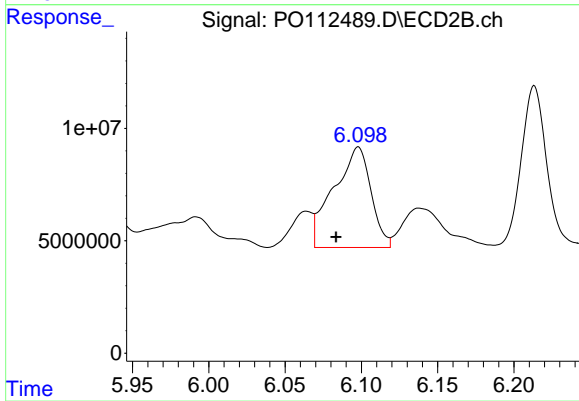
#27 AR-1254-2

R.T.: 5.681 min  
 Delta R.T.: -0.001 min  
 Response: 54567664  
 Conc: 188.50 ng/ml



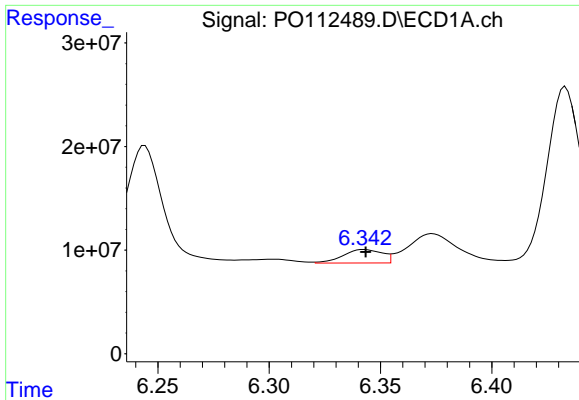
#28 AR-1254-3

R.T.: 6.128 min  
 Delta R.T.: 0.015 min  
 Response: 137449490  
 Conc: 184.67 ng/ml



#28 AR-1254-3

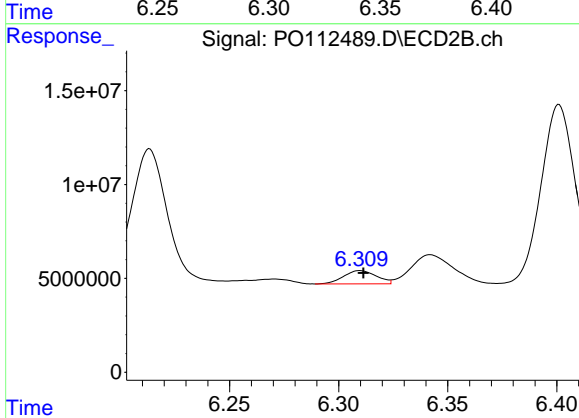
R.T.: 6.098 min  
 Delta R.T.: 0.015 min  
 Response: 75995393  
 Conc: 177.78 ng/ml



#29 AR-1254-4

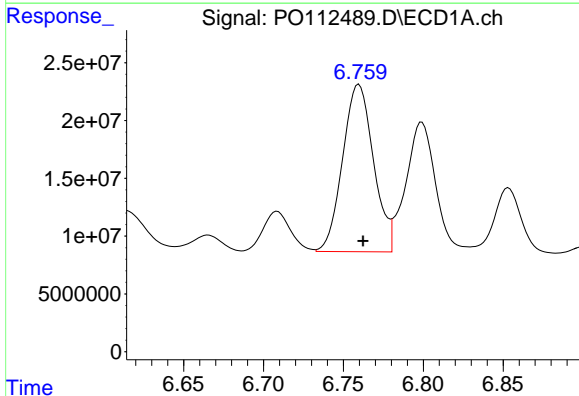
R.T.: 6.343 min  
 Delta R.T.: 0.000 min  
 Response: 15844793  
 Conc: 28.82 ng/ml

Instrument :  
 ECD\_O  
 ClientSampleId :  
 PL-02-07232025MSD



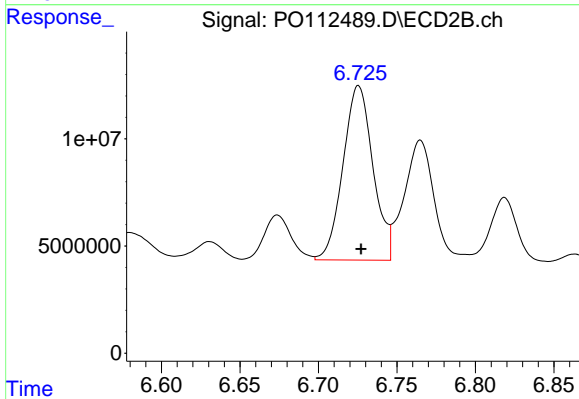
#29 AR-1254-4

R.T.: 6.310 min  
 Delta R.T.: -0.002 min  
 Response: 7340202  
 Conc: 26.89 ng/ml



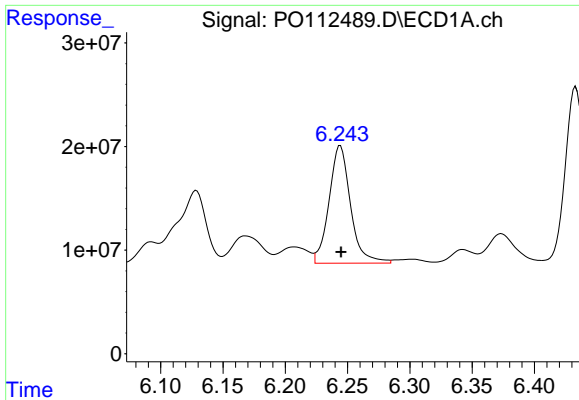
#30 AR-1254-5

R.T.: 6.760 min  
 Delta R.T.: -0.003 min  
 Response: 194387596  
 Conc: 274.63 ng/ml



#30 AR-1254-5

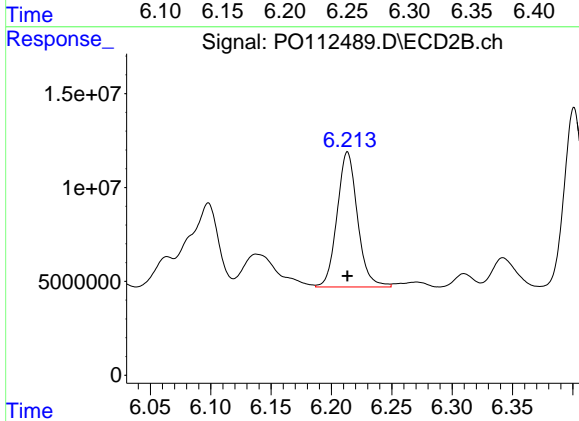
R.T.: 6.726 min  
 Delta R.T.: -0.002 min  
 Response: 108134777  
 Conc: 323.74 ng/ml



#31 AR-1260-1

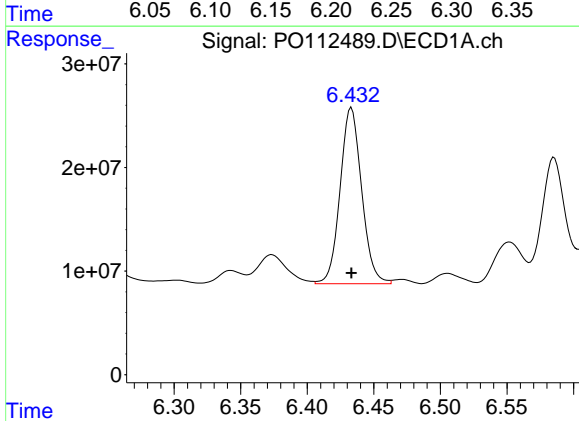
R.T.: 6.244 min  
 Delta R.T.: 0.000 min  
 Response: 136332201  
 Conc: 310.32 ng/ml

Instrument :  
 ECD\_O  
 ClientSampleId :  
 PL-02-07232025MSD



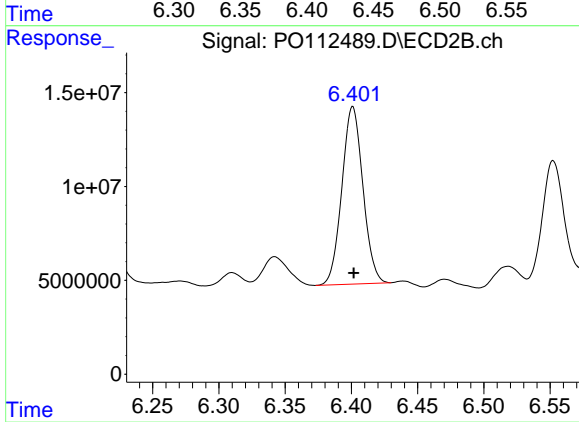
#31 AR-1260-1

R.T.: 6.213 min  
 Delta R.T.: 0.000 min  
 Response: 84762333  
 Conc: 341.08 ng/ml



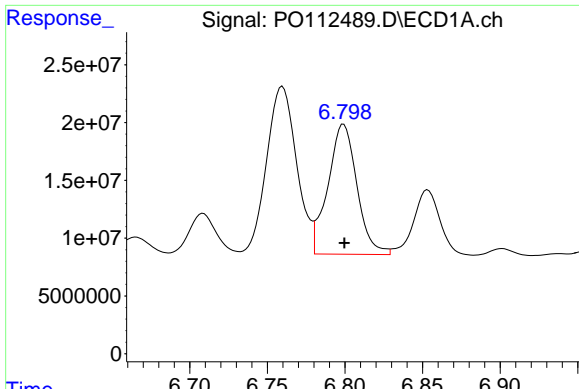
#32 AR-1260-2

R.T.: 6.433 min  
 Delta R.T.: 0.000 min  
 Response: 191566595  
 Conc: 278.48 ng/ml



#32 AR-1260-2

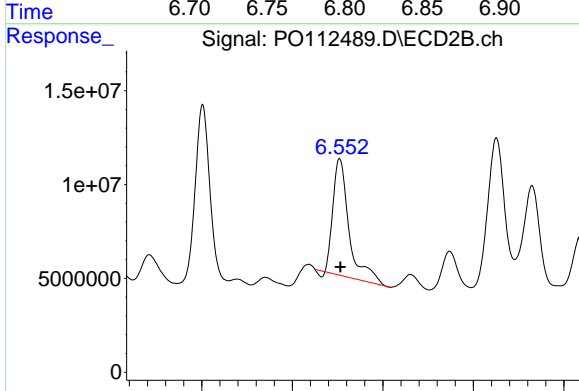
R.T.: 6.401 min  
 Delta R.T.: 0.000 min  
 Response: 104446533  
 Conc: 316.99 ng/ml



#33 AR-1260-3

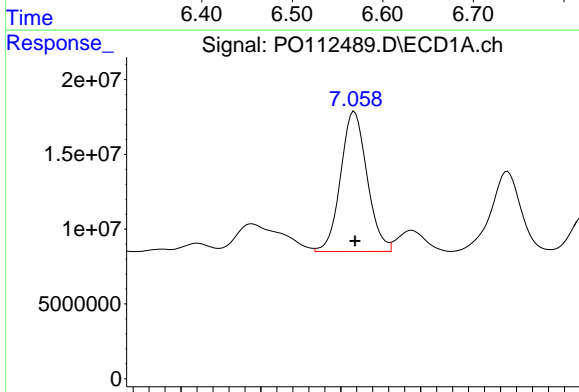
R.T.: 6.799 min  
 Delta R.T.: 0.000 min  
 Response: 146265832  
 Conc: 248.74 ng/ml

Instrument :  
 ECD\_O  
 ClientSampleId :  
 PL-02-07232025MSD



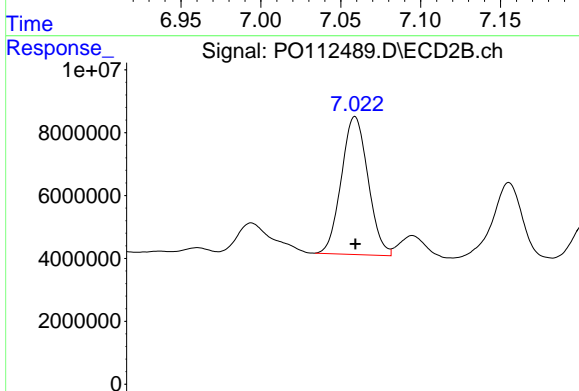
#33 AR-1260-3

R.T.: 6.552 min  
 Delta R.T.: 0.000 min  
 Response: 76225121  
 Conc: 296.69 ng/ml



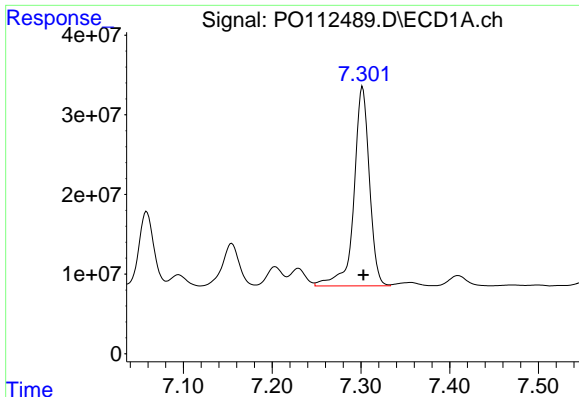
#34 AR-1260-4

R.T.: 7.059 min  
 Delta R.T.: 0.000 min  
 Response: 107743788  
 Conc: 238.90 ng/ml



#34 AR-1260-4

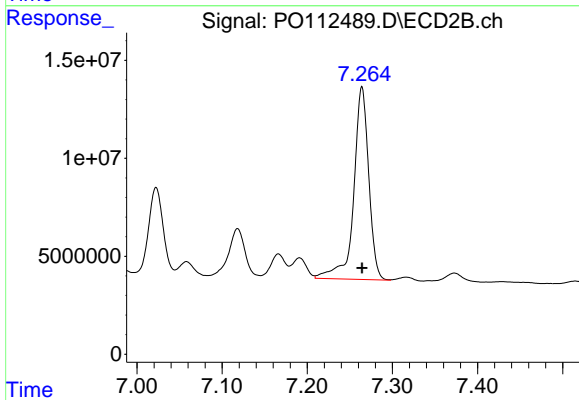
R.T.: 7.022 min  
 Delta R.T.: 0.000 min  
 Response: 50639520  
 Conc: 264.70 ng/ml



#35 AR-1260-5

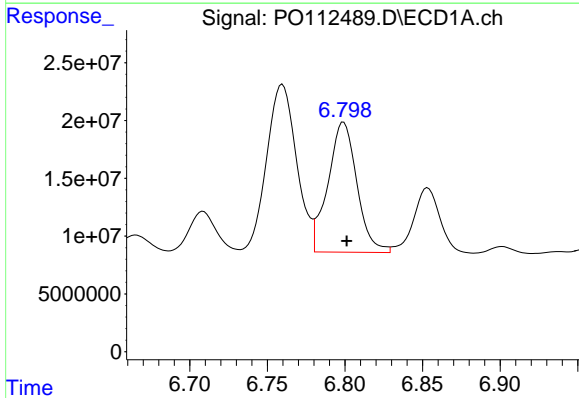
R.T.: 7.302 min  
 Delta R.T.: 0.000 min  
 Response: 303629131  
 Conc: 245.03 ng/ml

Instrument :  
 ECD\_O  
 ClientSampleId :  
 PL-02-07232025MSD



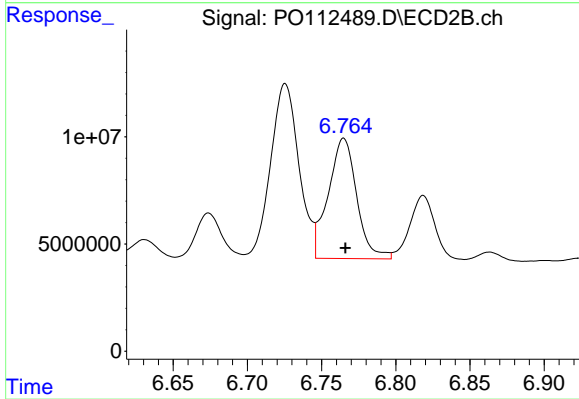
#35 AR-1260-5

R.T.: 7.264 min  
 Delta R.T.: 0.000 min  
 Response: 120799946  
 Conc: 293.07 ng/ml



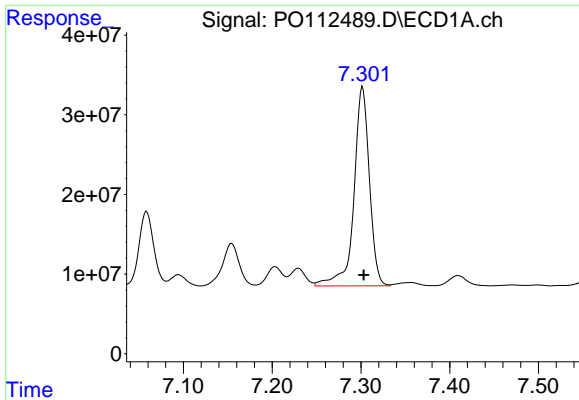
#36 AR-1262-1

R.T.: 6.799 min  
 Delta R.T.: -0.002 min  
 Response: 146265832  
 Conc: 157.41 ng/ml



#36 AR-1262-1

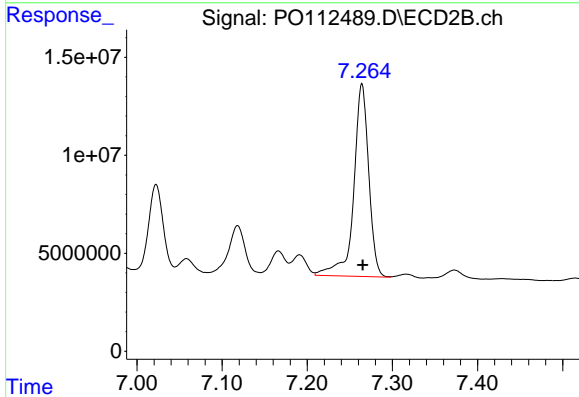
R.T.: 6.765 min  
 Delta R.T.: -0.001 min  
 Response: 74951532  
 Conc: 180.68 ng/ml



#37 AR-1262-2

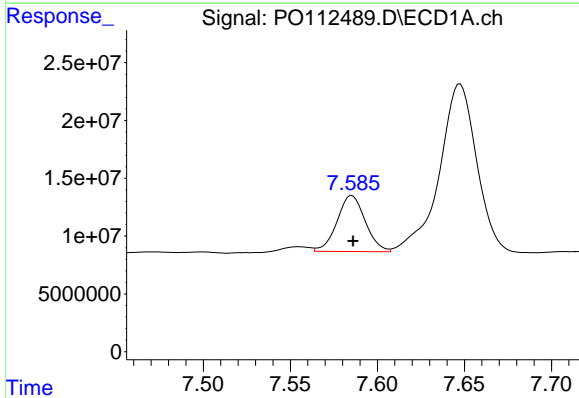
R.T.: 7.302 min  
 Delta R.T.: -0.001 min  
 Response: 303629131  
 Conc: 204.19 ng/ml

Instrument :  
 ECD\_O  
 ClientSampleId :  
 PL-02-07232025MSD



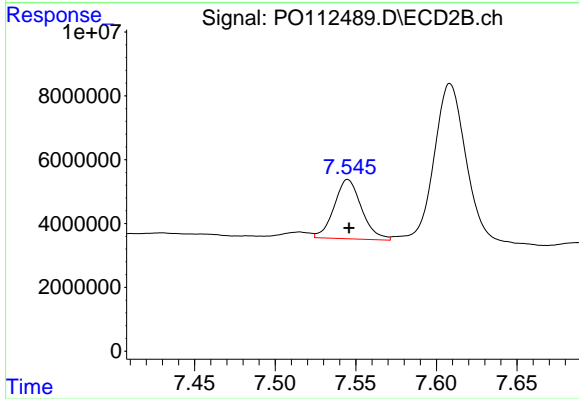
#37 AR-1262-2

R.T.: 7.264 min  
 Delta R.T.: 0.000 min  
 Response: 120799946  
 Conc: 234.31 ng/ml



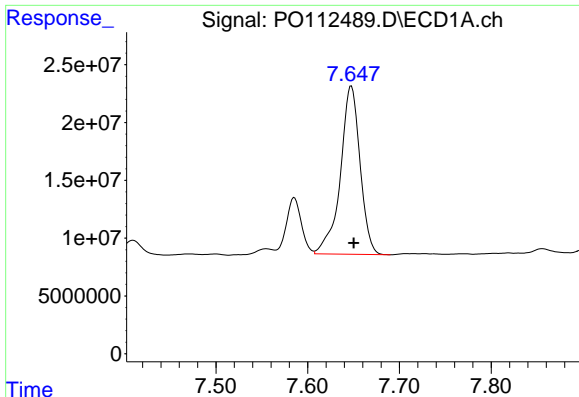
#38 AR-1262-3

R.T.: 7.585 min  
 Delta R.T.: 0.000 min  
 Response: 54706711  
 Conc: 92.68 ng/ml



#38 AR-1262-3

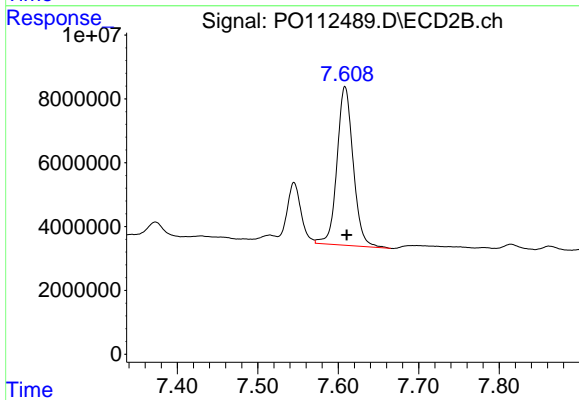
R.T.: 7.545 min  
 Delta R.T.: 0.000 min  
 Response: 22011170  
 Conc: 118.01 ng/ml



#39 AR-1262-4

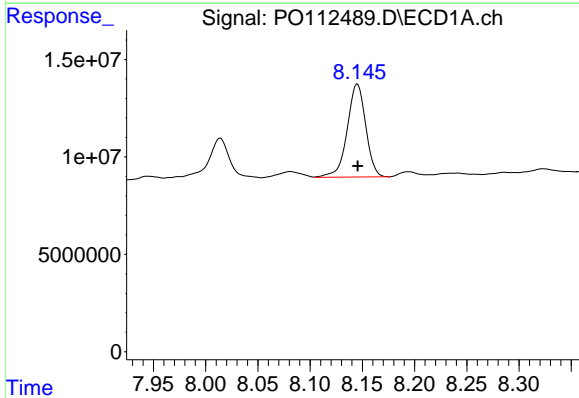
R.T.: 7.648 min  
 Delta R.T.: -0.003 min  
 Response: 216894855  
 Conc: 218.17 ng/ml

Instrument :  
 ECD\_O  
 ClientSampleId :  
 PL-02-07232025MSD



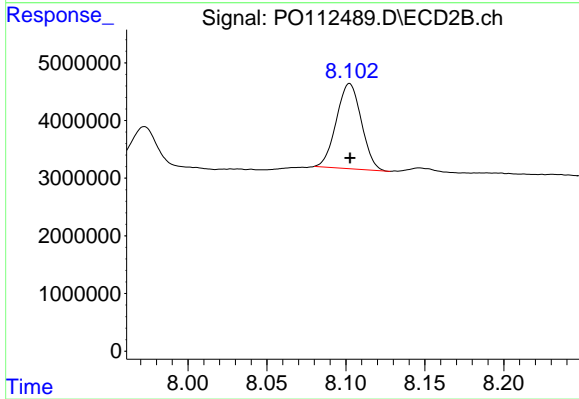
#39 AR-1262-4

R.T.: 7.608 min  
 Delta R.T.: -0.002 min  
 Response: 69528310  
 Conc: 241.33 ng/ml



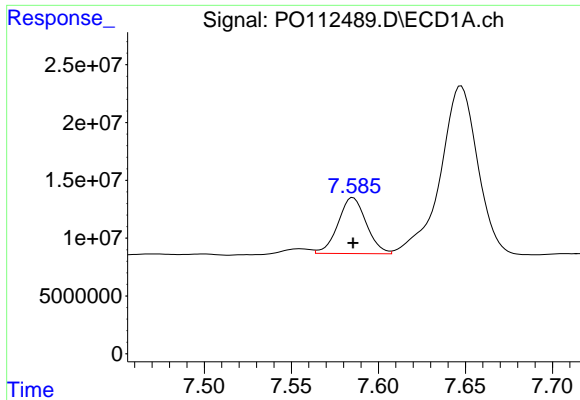
#40 AR-1262-5

R.T.: 8.145 min  
 Delta R.T.: 0.000 min  
 Response: 58978267  
 Conc: 135.88 ng/ml



#40 AR-1262-5

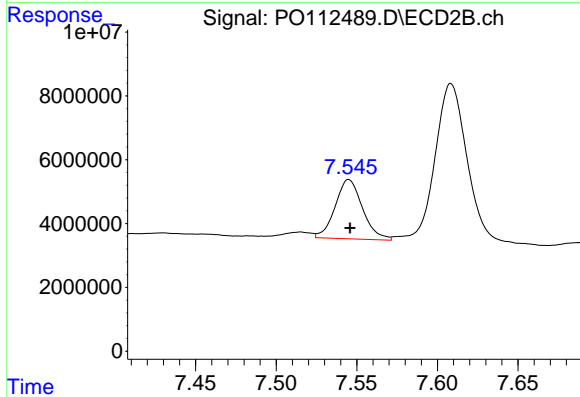
R.T.: 8.102 min  
 Delta R.T.: 0.000 min  
 Response: 16254928  
 Conc: 163.36 ng/ml



#41 AR-1268-1

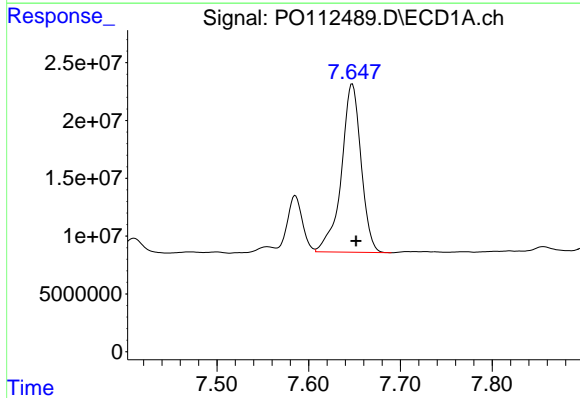
R.T.: 7.585 min  
 Delta R.T.: 0.000 min  
 Response: 54706711  
 Conc: 31.24 ng/ml

Instrument :  
 ECD\_O  
 ClientSampleId :  
 PL-02-07232025MSD



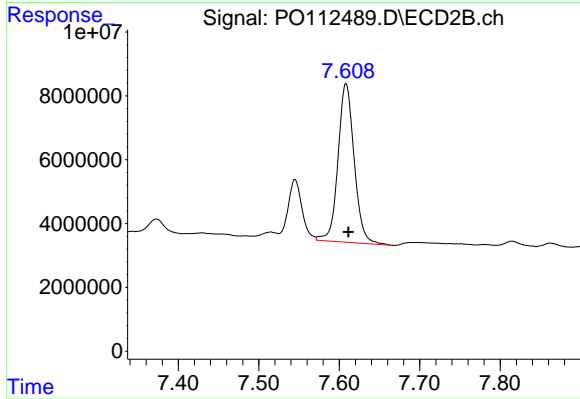
#41 AR-1268-1

R.T.: 7.545 min  
 Delta R.T.: 0.000 min  
 Response: 22011170  
 Conc: 42.50 ng/ml



#42 AR-1268-2

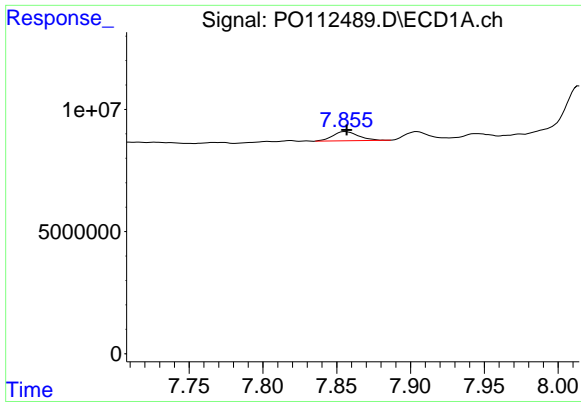
R.T.: 7.648 min  
 Delta R.T.: -0.004 min  
 Response: 216894855  
 Conc: 147.24 ng/ml



#42 AR-1268-2

R.T.: 7.608 min  
 Delta R.T.: -0.003 min  
 Response: 69528310  
 Conc: 163.57 ng/ml

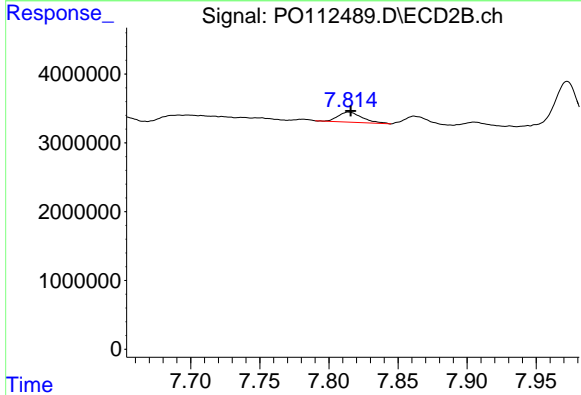




#43 AR-1268-3

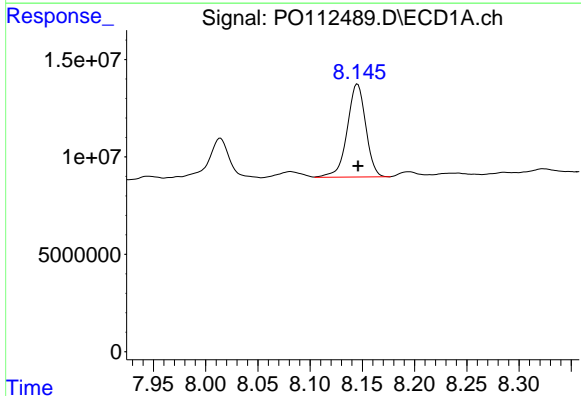
R.T.: 7.856 min  
 Delta R.T.: 0.000 min  
 Response: 4603200  
 Conc: 3.68 ng/ml

Instrument :  
 ECD\_O  
 ClientSampleId :  
 PL-02-07232025MSD



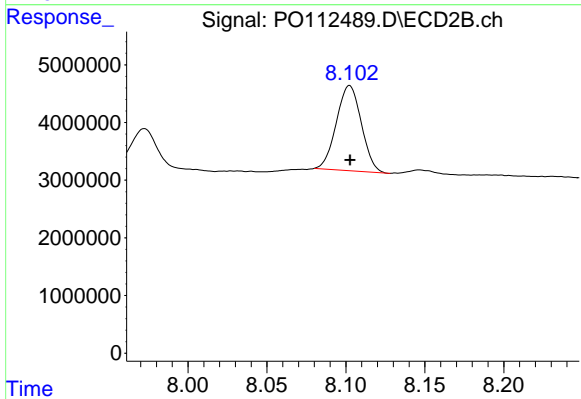
#43 AR-1268-3

R.T.: 7.815 min  
 Delta R.T.: -0.001 min  
 Response: 1787596  
 Conc: 5.56 ng/ml



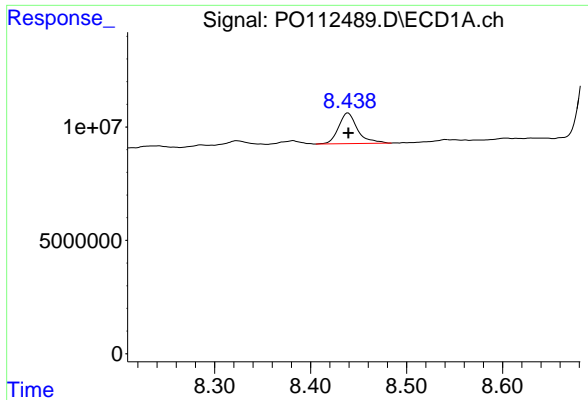
#44 AR-1268-4

R.T.: 8.145 min  
 Delta R.T.: 0.000 min  
 Response: 58978267  
 Conc: 122.40 ng/ml



#44 AR-1268-4

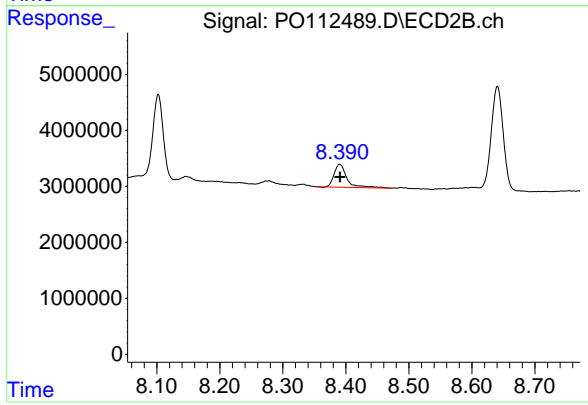
R.T.: 8.102 min  
 Delta R.T.: 0.000 min  
 Response: 16254928  
 Conc: 146.05 ng/ml



#45 AR-1268-5

R.T.: 8.439 min  
 Delta R.T.: 0.000 min  
 Response: 18673870  
 Conc: 5.56 ng/ml

Instrument :  
 ECD\_O  
 ClientSampleId :  
 PL-02-07232025MSD



#45 AR-1268-5

R.T.: 8.390 min  
 Delta R.T.: 0.000 min  
 Response: 5773434  
 Conc: 7.89 ng/ml