

Data Path : Z:\pestpcbsrv\HPCHEM1\ECD_0\Data\P0072425\
 Data File : PO112490.D
 Signal(s) : Signal #1: ECD1A.ch Signal #2: ECD2B.ch
 Acq On : 25 Jul 2025 03:46
 Operator : YP/AJ
 Sample : Q2685-01 10X
 Misc :
 ALS Vial : 33 Sample Multiplier: 1

Instrument :
 ECD_0
 ClientSampleId :
 COMP-1

Integration File signal 1: autoint1.e
 Integration File signal 2: autoint2.e
 Quant Time: Jul 25 06:25:31 2025
 Quant Method : Z:\pestpcbsrv\HPCHEM1\ECD_0\methods\P0072325.M
 Quant Title : GC EXTRACTABLES
 QLast Update : Thu Jul 24 04:54:06 2025
 Response via : Initial Calibration
 Integrator: ChemStation

Volume Inj. : 2 µl
 Signal #1 Phase : ZB-MR2 Signal #2 Phase: ZB-MR2
 Signal #1 Info : 30Mx0.32mmx 0.50µ Signal #2 Info : 30M x 0.32mm x 0.25µm

Compound	RT#1	RT#2	Resp#1	Resp#2	ng/ml	ng/ml
System Monitoring Compounds						
1) SA Tetrachlo...	3.673	3.665	4145320	2912795	0.510	0.586
2) SA Decachlor...	8.695	8.640	5224063	1298422	0.714	0.735
Target Compounds						
5) L1 AR-1016-3	4.828	4.925	2400970	-87682	9.175	N.D. #
6) L1 AR-1016-4	4.946	4.981	-333394	1301428	N.D.	11.716 #
8) L2 AR-1221-1	3.889	3.875	961959	361756	9.952	5.378 #
9) L2 AR-1221-2	3.963	3.954	1675606	3174345	23.317	62.576 #
10) L2 AR-1221-3	4.072	4.034	642852	189488	2.704	1.195 #
11) L3 AR-1232-1	4.072	4.034	642852	189488	3.438	1.497 #
12) L3 AR-1232-2	4.558	4.749	3843040	928794	35.708	7.082 #
14) L3 AR-1232-4	4.946	5.024	-333394	345961	N.D.	5.782 #
15) L3 AR-1232-5	5.017	5.191	7709885	-196412	113.580	N.D. #
18) L4 AR-1242-3	4.828	4.925	2400970	-87682	10.145	N.D. #
19) L4 AR-1242-4	4.946	5.024	-333394	345961	N.D.	2.819 #
20) L4 AR-1242-5	5.599	5.534	7361170	1657132	34.412	10.295 #
22) L5 AR-1248-2	5.017	4.981	7709885	1301428	30.222	7.688 #
24) L5 AR-1248-4	5.553	5.191	2552505	-196412	5.024	N.D. #
25) L5 AR-1248-5	5.599	5.575	7361170	4314065	21.057	20.087
26) L6 AR-1254-1	5.553	5.534	2552505	1657132	4.650	5.043
27) L6 AR-1254-2	5.706	5.679	3361825	3402617	6.918	11.754 #
28) L6 AR-1254-3	6.119	6.088	4960289	6391872	6.664	14.953 #
29) L6 AR-1254-4	6.348	6.296	1027778	2766579	1.870	10.135 #
30) L6 AR-1254-5	6.758	6.721	4830788	1946405	6.825	5.827
31) L7 AR-1260-1	6.247	6.217	1077174	1265894	2.452	5.094 #
32) L7 AR-1260-2	6.434	6.404	4182949	1203838	6.081	3.654 #
33) L7 AR-1260-3	6.799	6.555	2253407	779320	3.832	3.033
34) L7 AR-1260-4	7.048	7.021	369561	397223	0.819	2.076 #
35) L7 AR-1260-5	7.304	7.262	758847	360067	0.612	0.874 #
36) L8 AR-1262-1	6.799	6.768	2253407	252192	2.425	0.608 #
37) L8 AR-1262-2	7.304	7.262	758847	360067	0.510	0.698 #
38) L8 AR-1262-3	7.593	7.547	1794161	706132	3.040	3.786
39) L8 AR-1262-4	7.664	7.572f	39793	1934838	0.040	6.716 #
40) L8 AR-1262-5	8.141	8.127	352825	30310	0.813	0.305 #
41) L9 AR-1268-1	7.593	7.547	1794161	706132	1.025	1.364 #
42) L9 AR-1268-2	7.664	7.572f	39793	1934838	0.027	4.552 #
43) L9 AR-1268-3	7.857	7.808	365240	406246	0.292	1.265 #
44) L9 AR-1268-4	8.141	8.127	352825	30310	0.732	0.272 #
45) L9 AR-1268-5	8.439	8.405	795681	391241	0.237	0.535 #

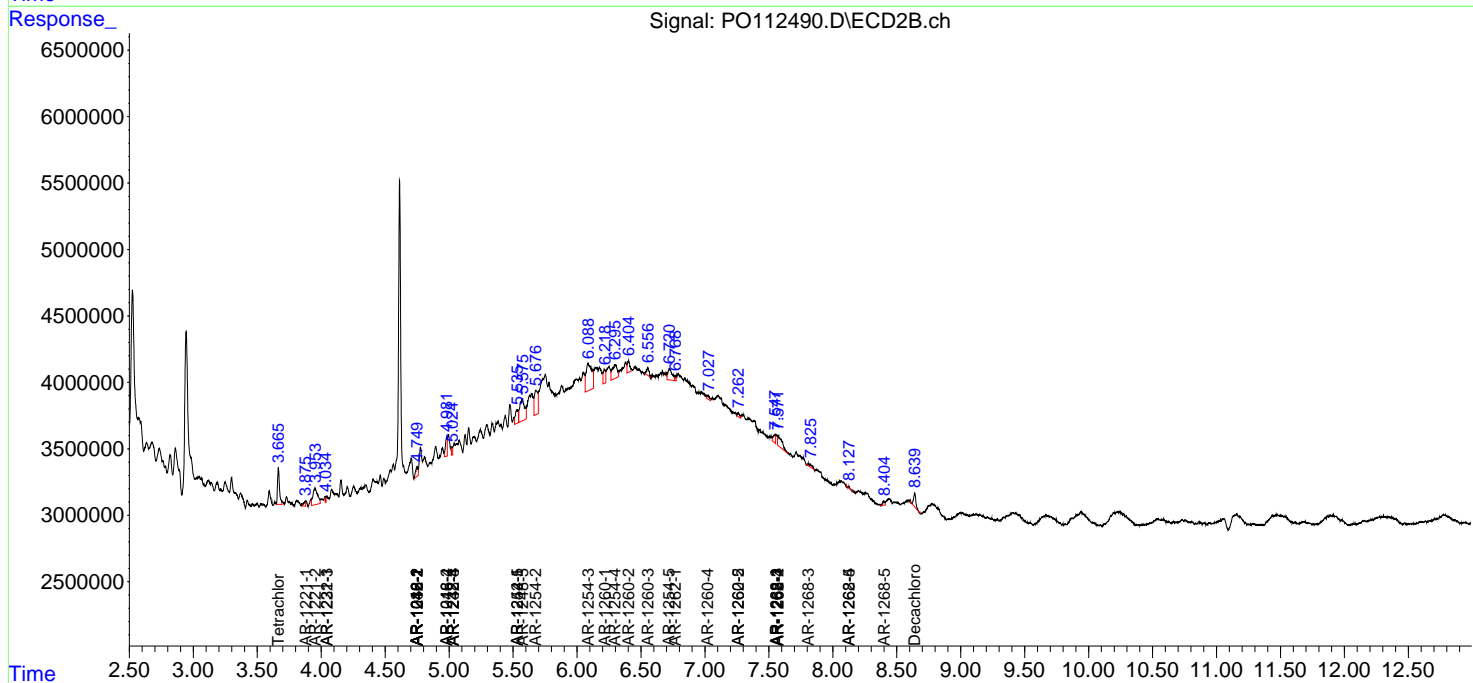
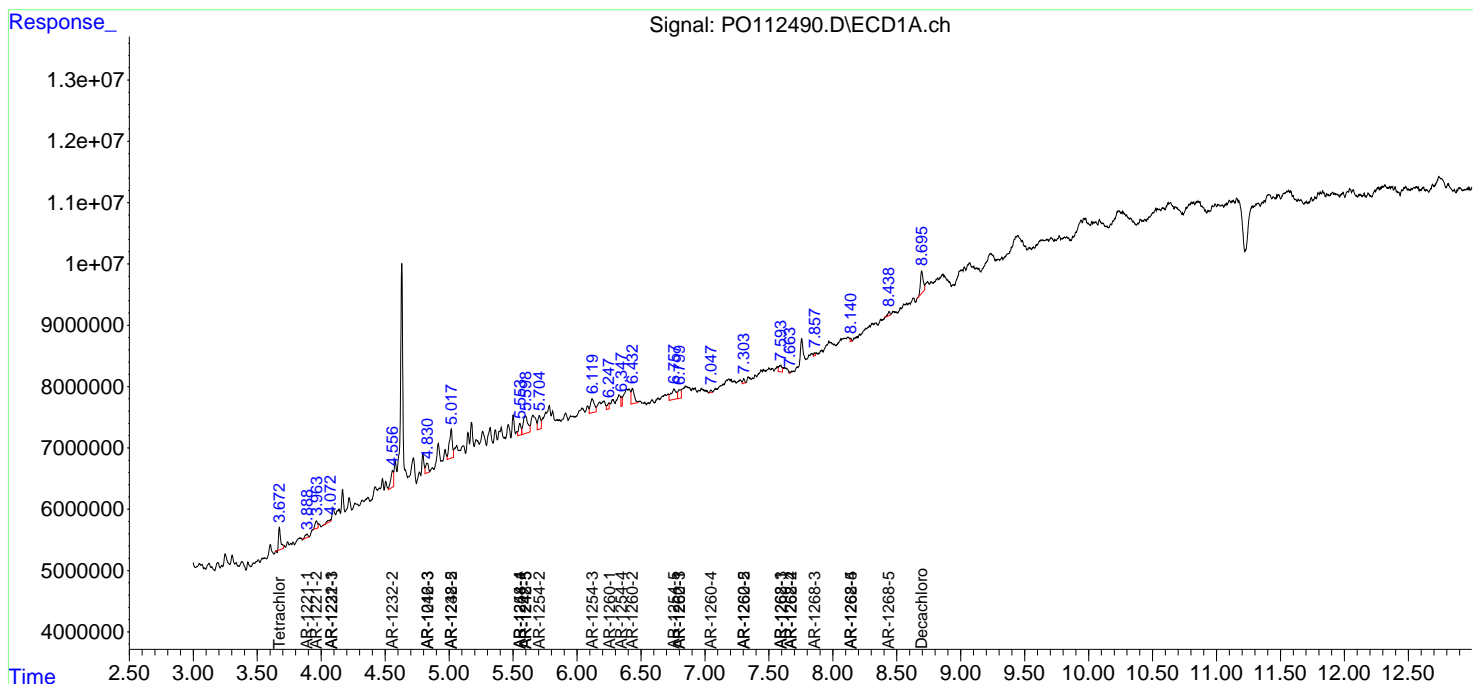
(f)=RT Delta > 1/2 Window (#)=Amounts differ by > 25% (m)=manual int.

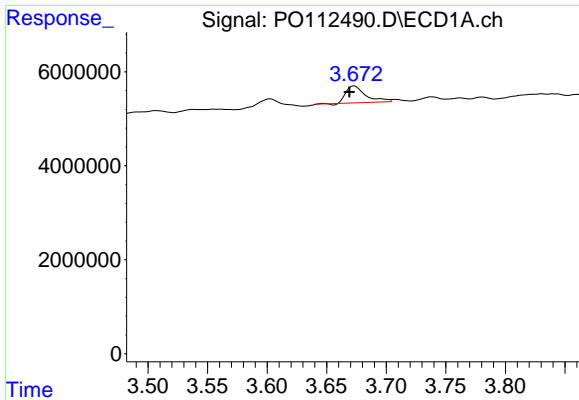
Data Path : Z:\pestpcbsrv\HPCHEM1\ECD_O\Data\PO072425\
 Data File : PO112490.D
 Signal(s) : Signal #1: ECD1A.ch Signal #2: ECD2B.ch
 Acq On : 25 Jul 2025 03:46
 Operator : YP/AJ
 Sample : Q2685-01 10X
 Misc :
 ALS Vial : 33 Sample Multiplier: 1

Instrument :
 ECD_O
 ClientSampleId :
 COMP-1

Integration File signal 1: autoint1.e
 Integration File signal 2: autoint2.e
 Quant Time: Jul 25 06:25:31 2025
 Quant Method : Z:\pestpcbsrv\HPCHEM1\ECD_O\methods\PO072325.M
 Quant Title : GC EXTRACTABLES
 QLast Update : Thu Jul 24 04:54:06 2025
 Response via : Initial Calibration
 Integrator: ChemStation

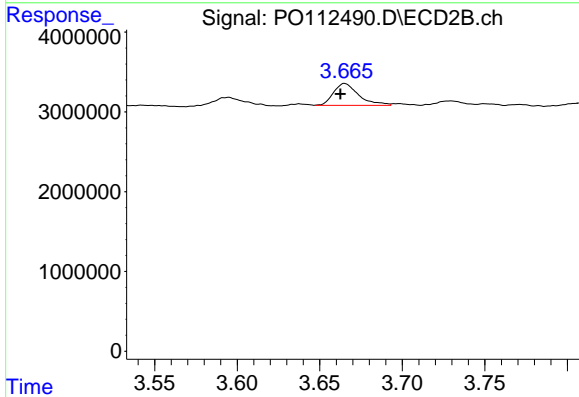
Volume Inj. : 2 µl
 Signal #1 Phase : ZB-MR1 Signal #2 Phase: ZB-MR2
 Signal #1 Info : 30Mx0.32mmx 0.50µ Signal #2 Info : 30M x 0.32mm x 0.25µm



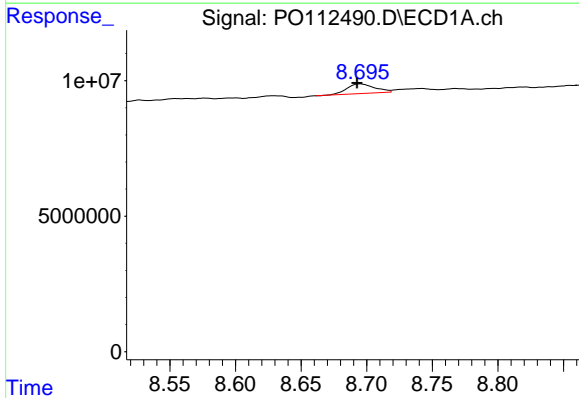


#1 Tetrachloro-m-xylene
 R.T.: 3.673 min
 Delta R.T.: 0.004 min
 Response: 4145320
 Conc: 0.51 ng/ml

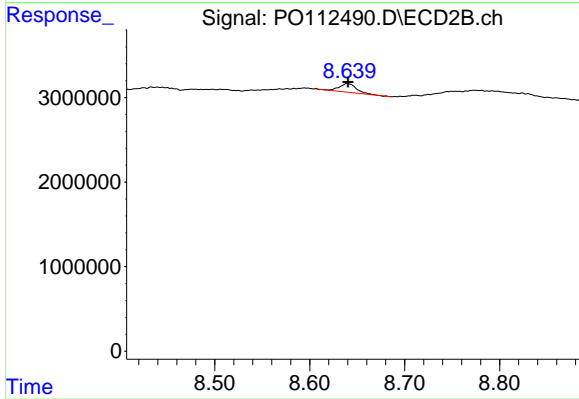
Instrument :
 ECD_O
 ClientSampleId :
 COMP-1



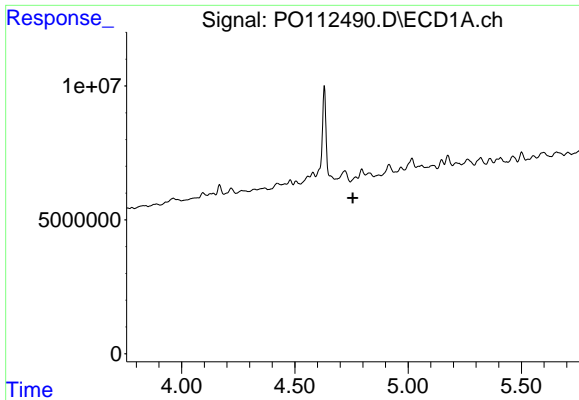
#1 Tetrachloro-m-xylene
 R.T.: 3.665 min
 Delta R.T.: 0.003 min
 Response: 2912795
 Conc: 0.59 ng/ml



#2 Decachlorobiphenyl
 R.T.: 8.695 min
 Delta R.T.: 0.002 min
 Response: 5224063
 Conc: 0.71 ng/ml



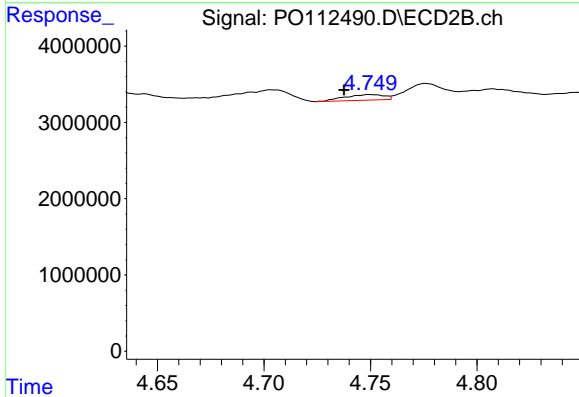
#2 Decachlorobiphenyl
 R.T.: 8.640 min
 Delta R.T.: 0.000 min
 Response: 1298422
 Conc: 0.73 ng/ml



#3 AR-1016-1

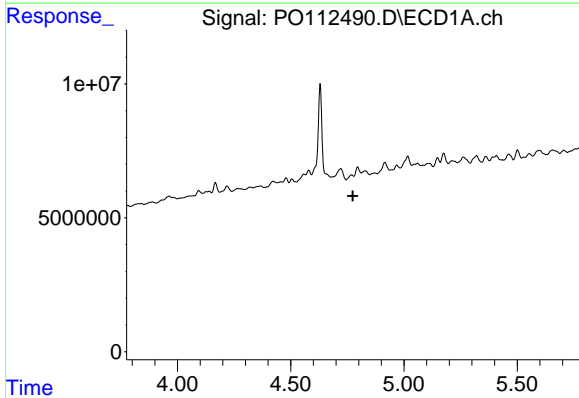
R.T.: 4.768 min
 Delta R.T.: 0.013 min
 Response: -1808173
 Conc: N.D.

Instrument :
 ECD_O
 ClientSampleId :
 COMP-1



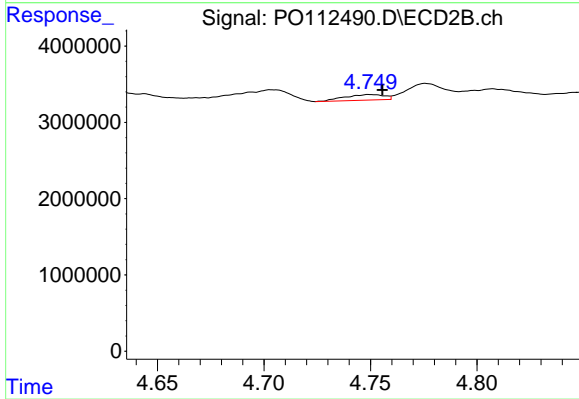
#3 AR-1016-1

R.T.: 4.749 min
 Delta R.T.: 0.012 min
 Response: 928794
 Conc: 5.31 ng/ml



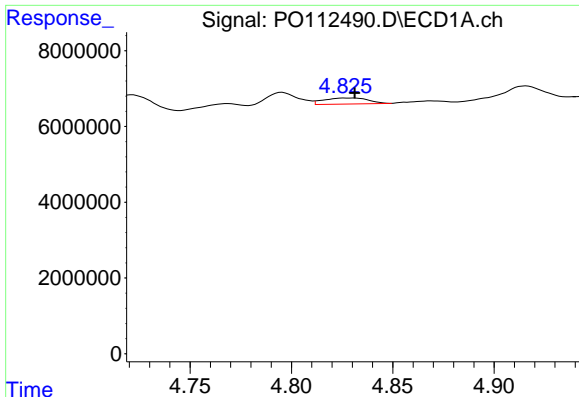
#4 AR-1016-2

R.T.: 4.768 min
 Delta R.T.: -0.006 min
 Response: -1808173
 Conc: N.D.



#4 AR-1016-2

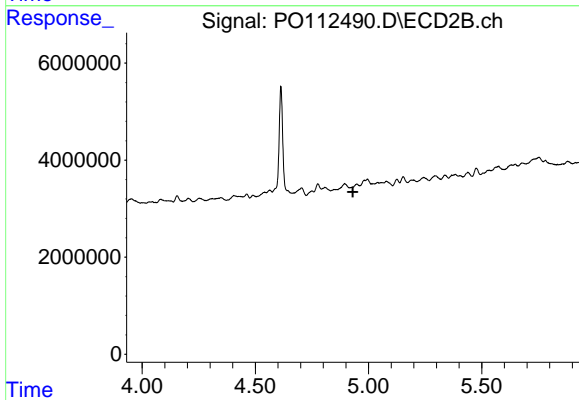
R.T.: 4.749 min
 Delta R.T.: -0.006 min
 Response: 928794
 Conc: 3.57 ng/ml



#5 AR-1016-3

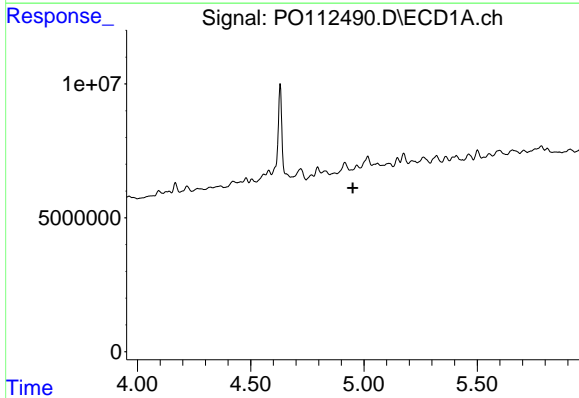
R.T.: 4.828 min
 Delta R.T.: -0.003 min
 Response: 2400970
 Conc: 9.18 ng/ml

Instrument :
 ECD_O
 ClientSampleId :
 COMP-1



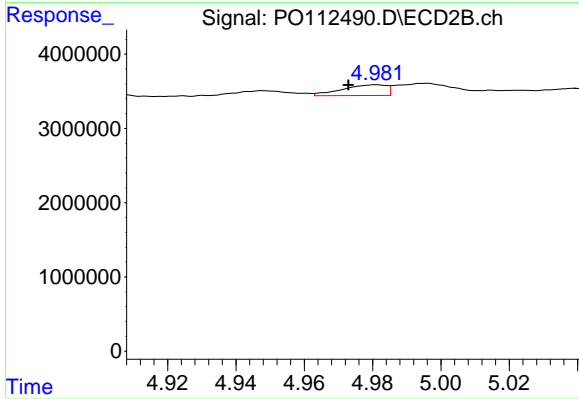
#5 AR-1016-3

R.T.: 4.925 min
 Delta R.T.: -0.006 min
 Response: -87682
 Conc: N.D.



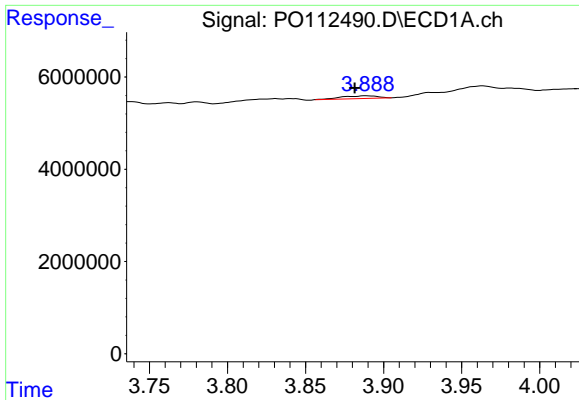
#6 AR-1016-4

R.T.: 4.946 min
 Delta R.T.: -0.004 min
 Response: -333394
 Conc: N.D.



#6 AR-1016-4

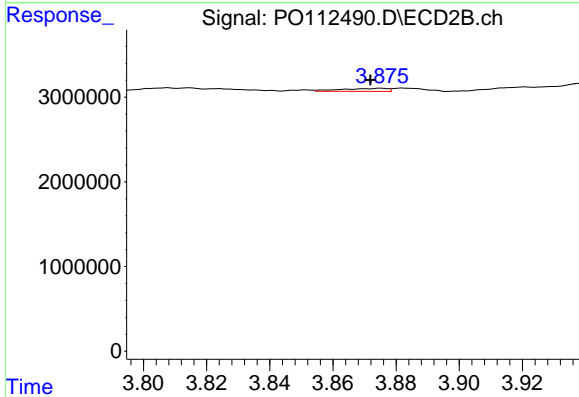
R.T.: 4.981 min
 Delta R.T.: 0.008 min
 Response: 1301428
 Conc: 11.72 ng/ml



#8 AR-1221-1

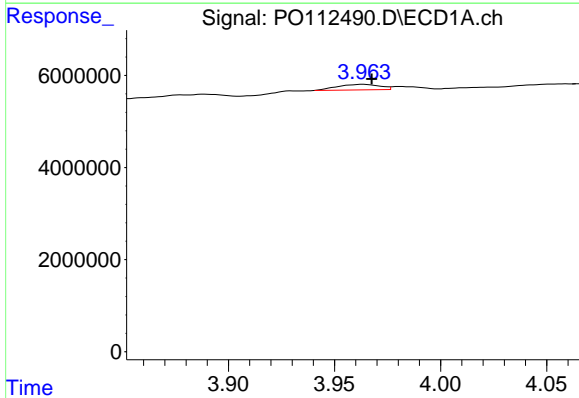
R.T.: 3.889 min
 Delta R.T.: 0.007 min
 Response: 961959
 Conc: 9.95 ng/ml

Instrument :
 ECD_O
 ClientSampleId :
 COMP-1



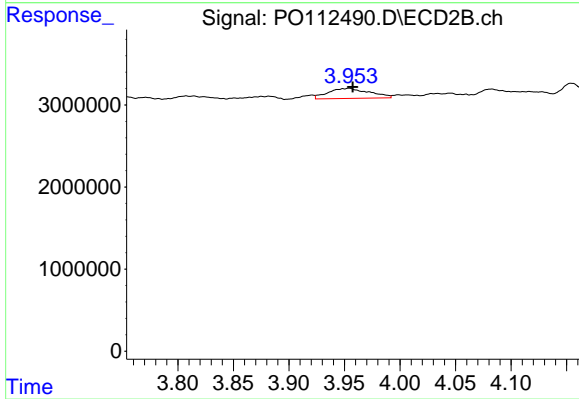
#8 AR-1221-1

R.T.: 3.875 min
 Delta R.T.: 0.003 min
 Response: 361756
 Conc: 5.38 ng/ml



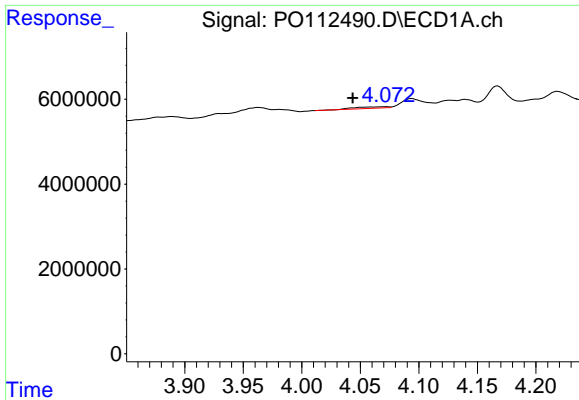
#9 AR-1221-2

R.T.: 3.963 min
 Delta R.T.: -0.004 min
 Response: 1675606
 Conc: 23.32 ng/ml



#9 AR-1221-2

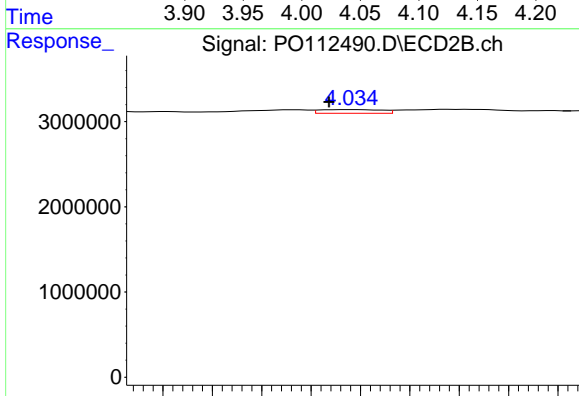
R.T.: 3.954 min
 Delta R.T.: -0.003 min
 Response: 3174345
 Conc: 62.58 ng/ml



#10 AR-1221-3

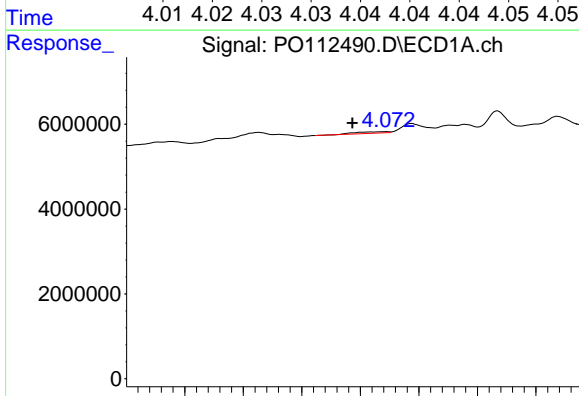
R.T.: 4.072 min
 Delta R.T.: 0.029 min
 Response: 642852
 Conc: 2.70 ng/ml

Instrument :
 ECD_O
 ClientSampleId :
 COMP-1



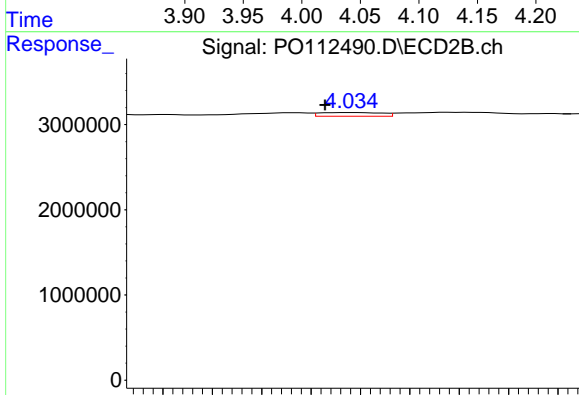
#10 AR-1221-3

R.T.: 4.034 min
 Delta R.T.: 0.002 min
 Response: 189488
 Conc: 1.20 ng/ml



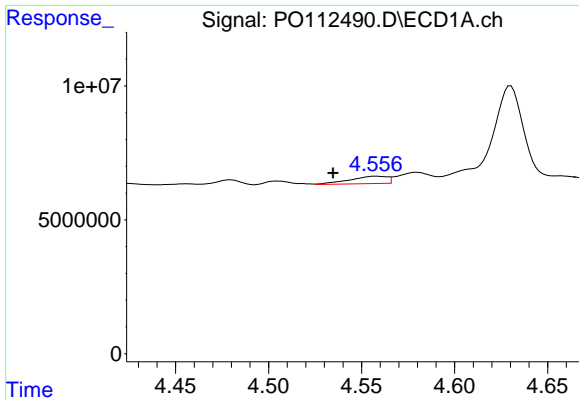
#11 AR-1232-1

R.T.: 4.072 min
 Delta R.T.: 0.029 min
 Response: 642852
 Conc: 3.44 ng/ml



#11 AR-1232-1

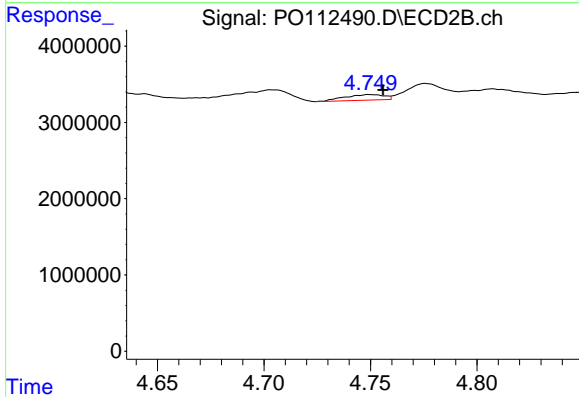
R.T.: 4.034 min
 Delta R.T.: 0.003 min
 Response: 189488
 Conc: 1.50 ng/ml



#12 AR-1232-2

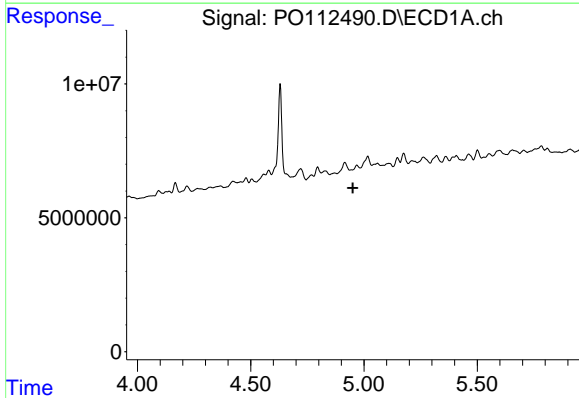
R.T.: 4.558 min
 Delta R.T.: 0.023 min
 Response: 3843040
 Conc: 35.71 ng/ml

Instrument :
 ECD_O
 ClientSampleId :
 COMP-1



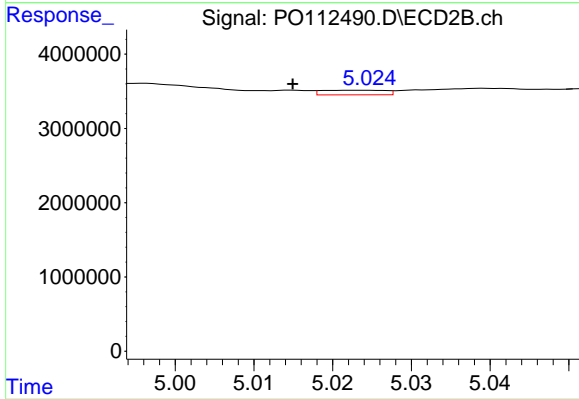
#12 AR-1232-2

R.T.: 4.749 min
 Delta R.T.: -0.007 min
 Response: 928794
 Conc: 7.08 ng/ml



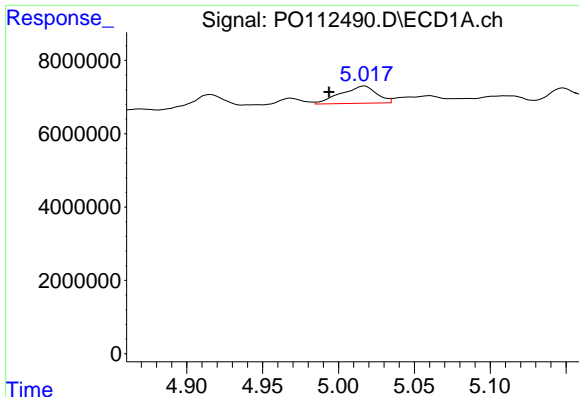
#14 AR-1232-4

R.T.: 4.946 min
 Delta R.T.: -0.004 min
 Response: -333394
 Conc: N.D.



#14 AR-1232-4

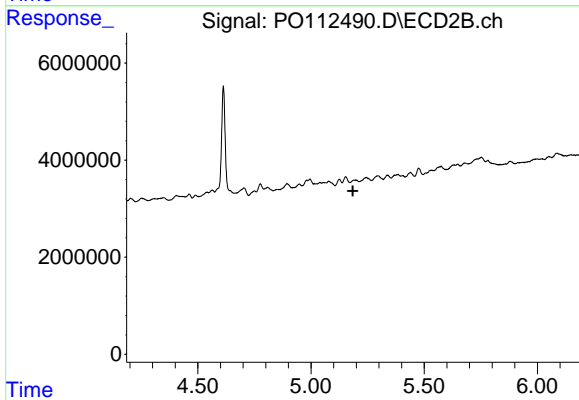
R.T.: 5.024 min
 Delta R.T.: 0.009 min
 Response: 345961
 Conc: 5.78 ng/ml



#15 AR-1232-5

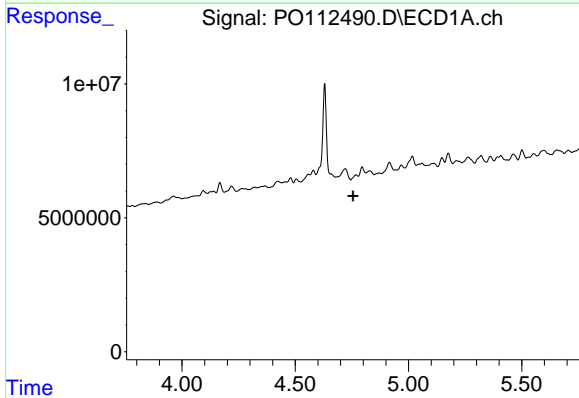
R.T.: 5.017 min
 Delta R.T.: 0.023 min
 Response: 7709885
 Conc: 113.58 ng/ml

Instrument :
 ECD_O
 ClientSampleId :
 COMP-1



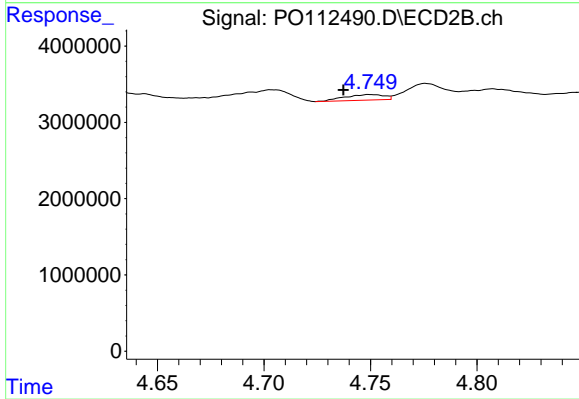
#15 AR-1232-5

R.T.: 5.191 min
 Delta R.T.: 0.005 min
 Response: -196412
 Conc: N.D.



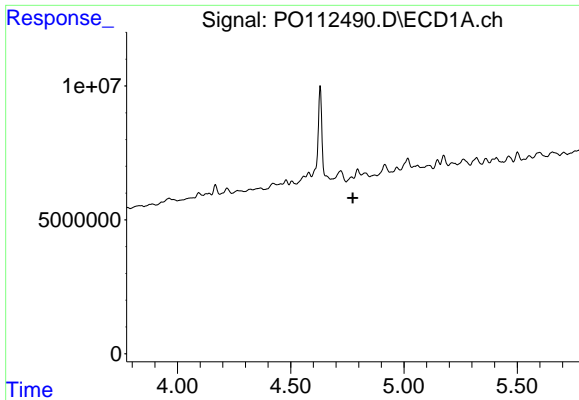
#16 AR-1242-1

R.T.: 4.768 min
 Delta R.T.: 0.013 min
 Response: -1808173
 Conc: N.D.



#16 AR-1242-1

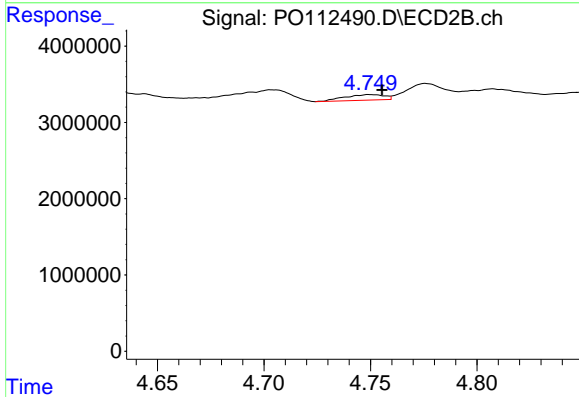
R.T.: 4.749 min
 Delta R.T.: 0.012 min
 Response: 928794
 Conc: 5.86 ng/ml



#17 AR-1242-2

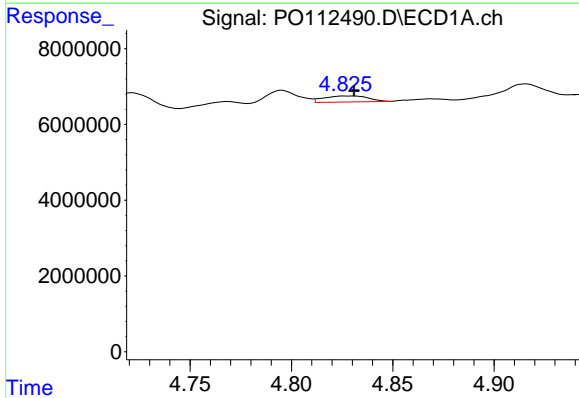
R.T.: 4.768 min
 Delta R.T.: -0.006 min
 Response: -1808173
 Conc: N.D.

Instrument :
 ECD_O
 ClientSampleId :
 COMP-1



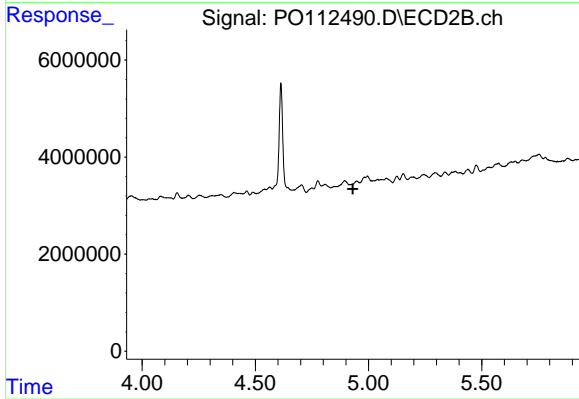
#17 AR-1242-2

R.T.: 4.749 min
 Delta R.T.: -0.006 min
 Response: 928794
 Conc: 3.97 ng/ml



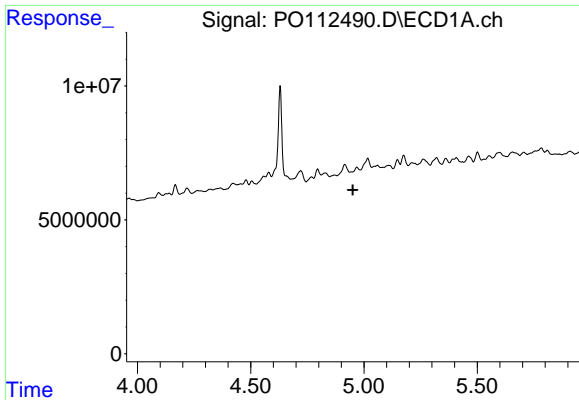
#18 AR-1242-3

R.T.: 4.828 min
 Delta R.T.: -0.003 min
 Response: 2400970
 Conc: 10.15 ng/ml



#18 AR-1242-3

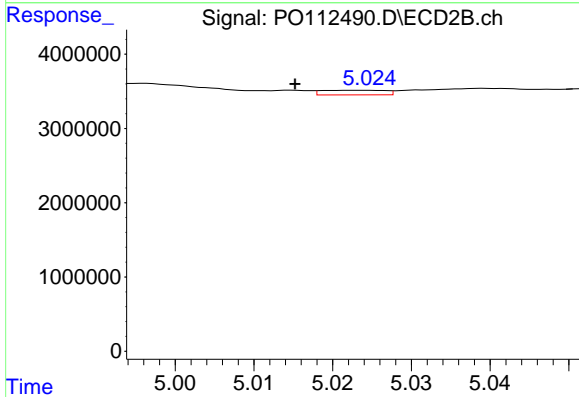
R.T.: 4.925 min
 Delta R.T.: -0.006 min
 Response: -87682
 Conc: N.D.



#19 AR-1242-4

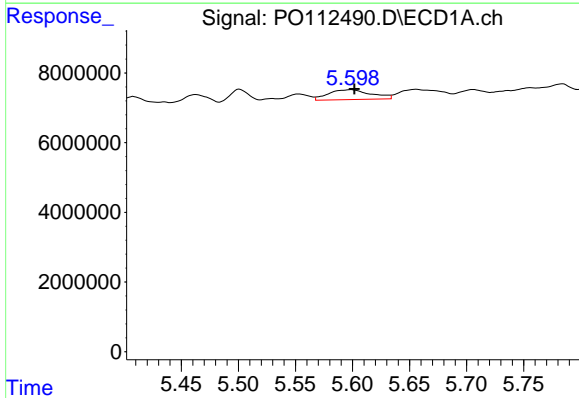
R.T.: 4.946 min
 Delta R.T.: -0.004 min
 Response: -333394
 Conc: N.D.

Instrument :
 ECD_O
 ClientSampleId :
 COMP-1



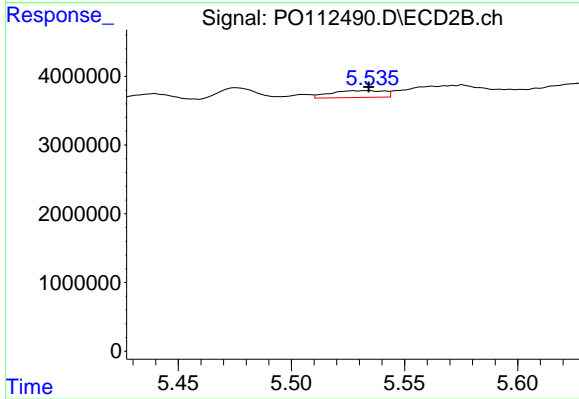
#19 AR-1242-4

R.T.: 5.024 min
 Delta R.T.: 0.009 min
 Response: 345961
 Conc: 2.82 ng/ml



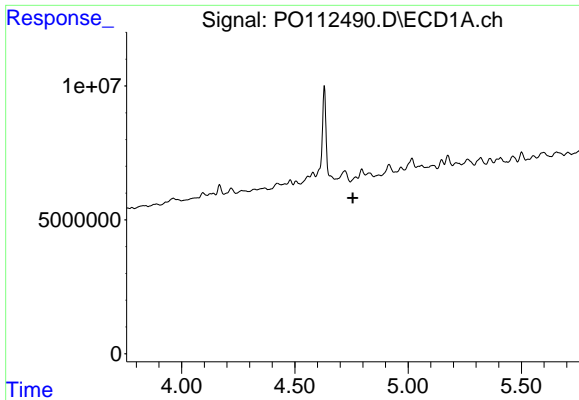
#20 AR-1242-5

R.T.: 5.599 min
 Delta R.T.: -0.003 min
 Response: 7361170
 Conc: 34.41 ng/ml



#20 AR-1242-5

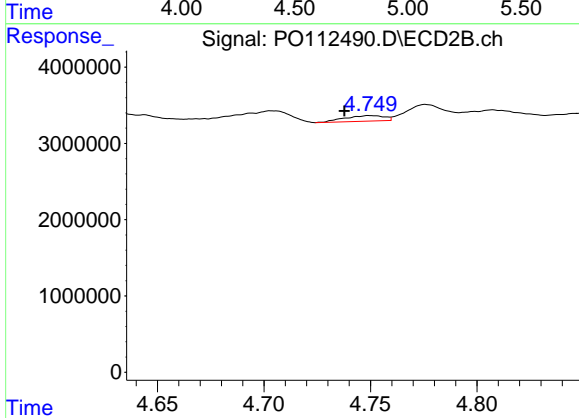
R.T.: 5.534 min
 Delta R.T.: 0.000 min
 Response: 1657132
 Conc: 10.29 ng/ml



#21 AR-1248-1

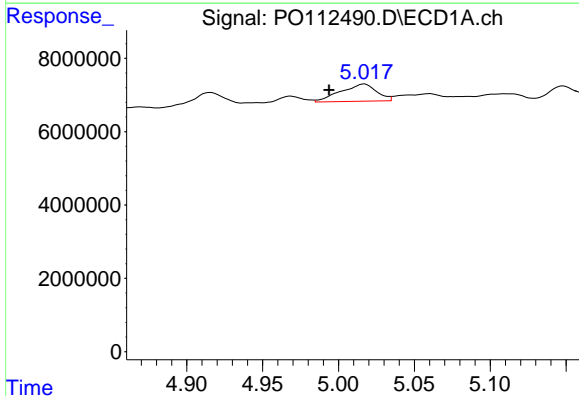
R.T.: 4.768 min
 Delta R.T.: 0.013 min
 Response: -1808173
 Conc: N.D.

Instrument :
 ECD_O
 ClientSampleId :
 COMP-1



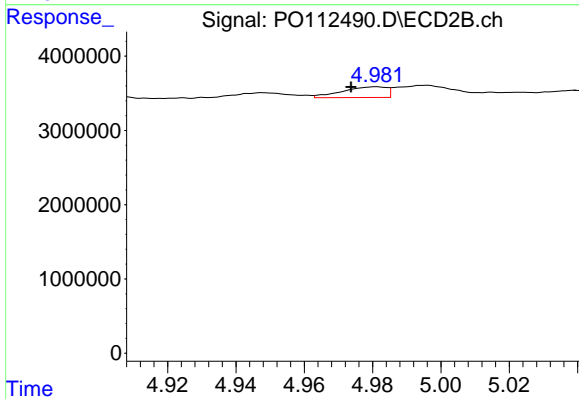
#21 AR-1248-1

R.T.: 4.749 min
 Delta R.T.: 0.011 min
 Response: 928794
 Conc: 7.64 ng/ml



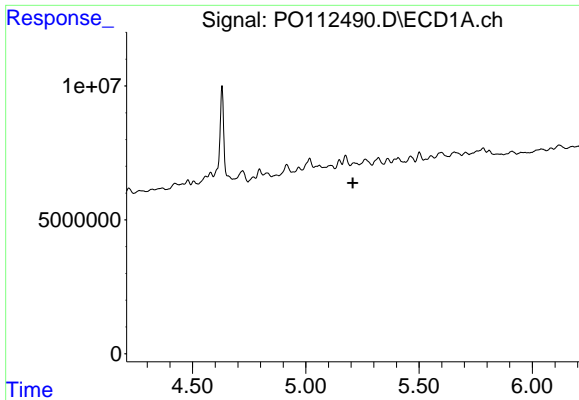
#22 AR-1248-2

R.T.: 5.017 min
 Delta R.T.: 0.023 min
 Response: 7709885
 Conc: 30.22 ng/ml



#22 AR-1248-2

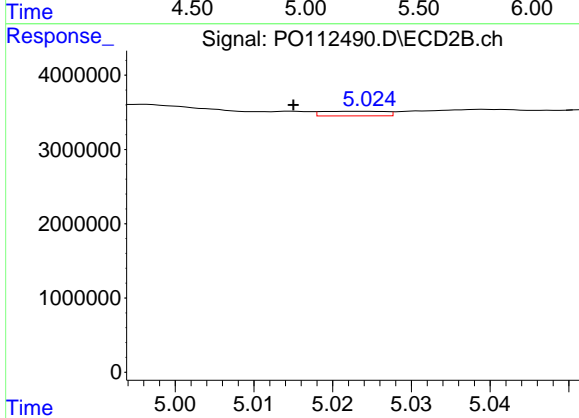
R.T.: 4.981 min
 Delta R.T.: 0.007 min
 Response: 1301428
 Conc: 7.69 ng/ml



#23 AR-1248-3

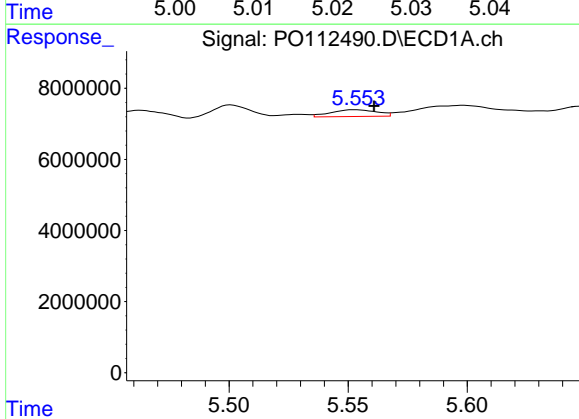
R.T.: 5.211 min
 Delta R.T.: 0.004 min
 Response: -1566354
 Conc: N.D.

Instrument :
 ECD_O
 ClientSampleId :
 COMP-1



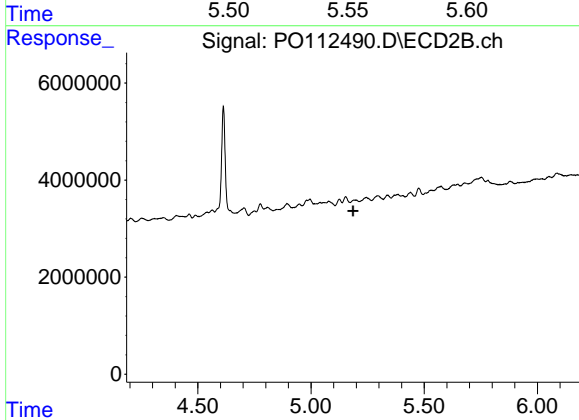
#23 AR-1248-3

R.T.: 5.024 min
 Delta R.T.: 0.009 min
 Response: 345961
 Conc: 1.95 ng/ml



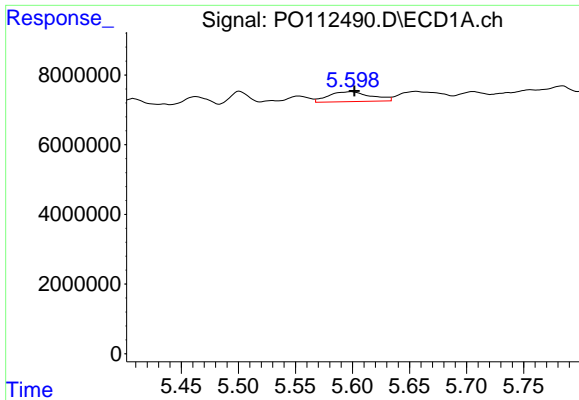
#24 AR-1248-4

R.T.: 5.553 min
 Delta R.T.: -0.008 min
 Response: 2552505
 Conc: 5.02 ng/ml



#24 AR-1248-4

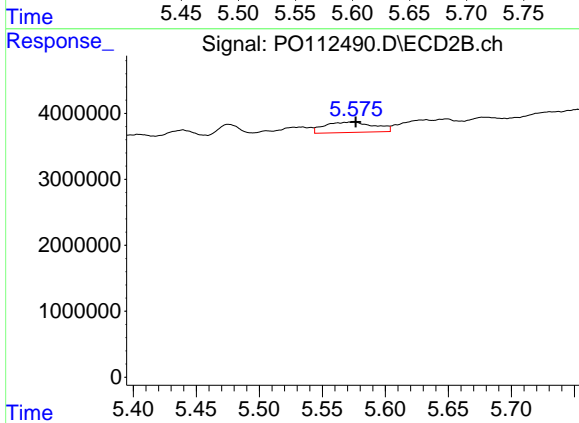
R.T.: 5.191 min
 Delta R.T.: 0.005 min
 Response: -196412
 Conc: N.D.



#25 AR-1248-5

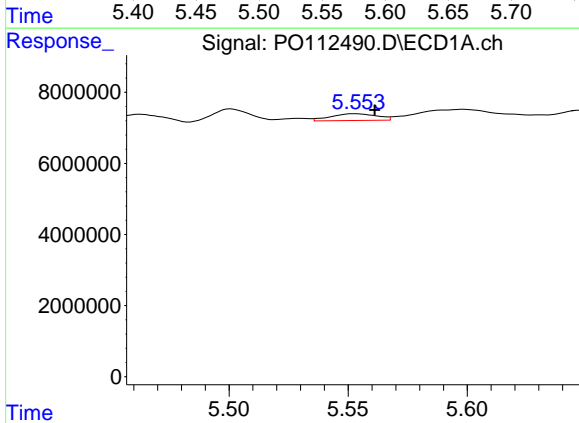
R.T.: 5.599 min
 Delta R.T.: -0.003 min
 Response: 7361170
 Conc: 21.06 ng/ml

Instrument :
 ECD_O
 ClientSampleId :
 COMP-1



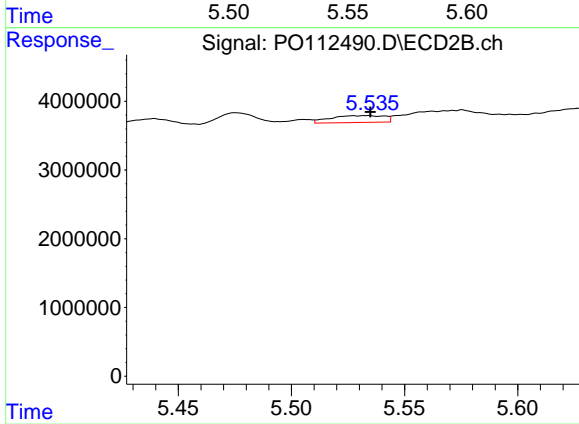
#25 AR-1248-5

R.T.: 5.575 min
 Delta R.T.: -0.001 min
 Response: 4314065
 Conc: 20.09 ng/ml



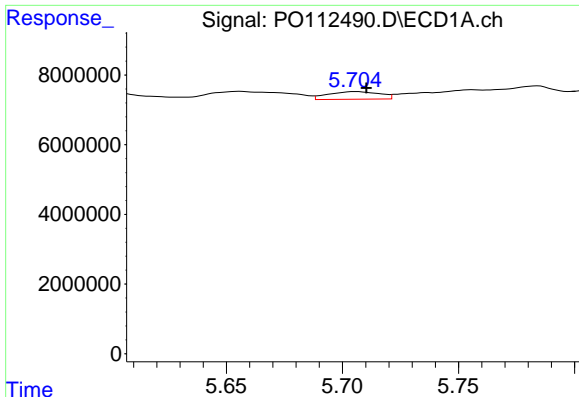
#26 AR-1254-1

R.T.: 5.553 min
 Delta R.T.: -0.008 min
 Response: 2552505
 Conc: 4.65 ng/ml



#26 AR-1254-1

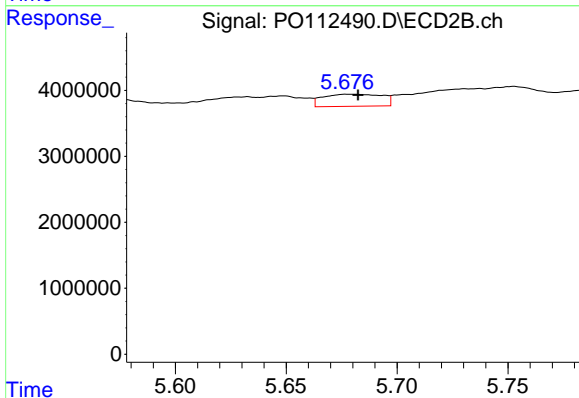
R.T.: 5.534 min
 Delta R.T.: -0.001 min
 Response: 1657132
 Conc: 5.04 ng/ml



#27 AR-1254-2

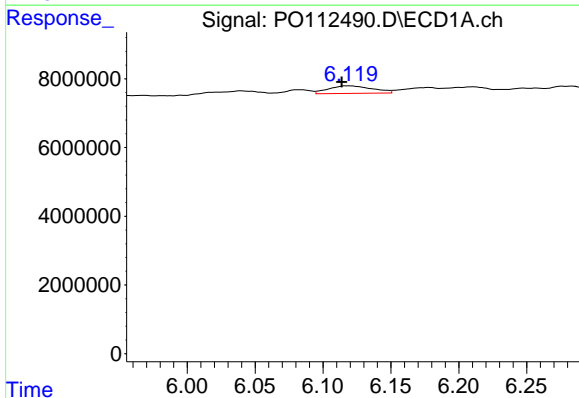
R.T.: 5.706 min
 Delta R.T.: -0.005 min
 Response: 3361825
 Conc: 6.92 ng/ml

Instrument :
 ECD_O
 ClientSampleId :
 COMP-1



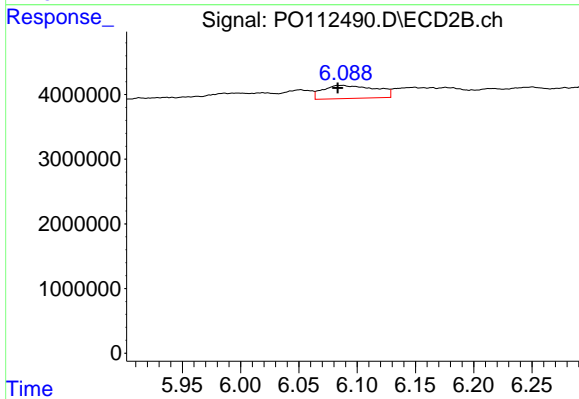
#27 AR-1254-2

R.T.: 5.679 min
 Delta R.T.: -0.004 min
 Response: 3402617
 Conc: 11.75 ng/ml



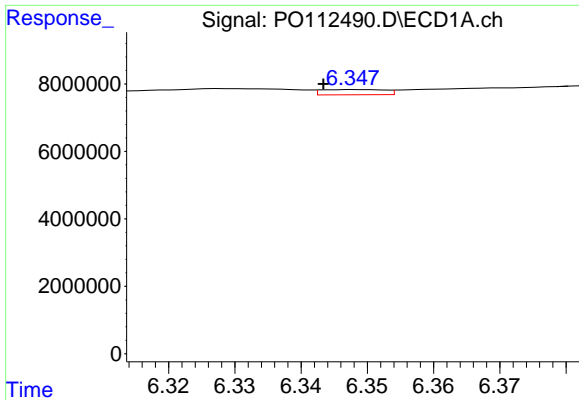
#28 AR-1254-3

R.T.: 6.119 min
 Delta R.T.: 0.005 min
 Response: 4960289
 Conc: 6.66 ng/ml



#28 AR-1254-3

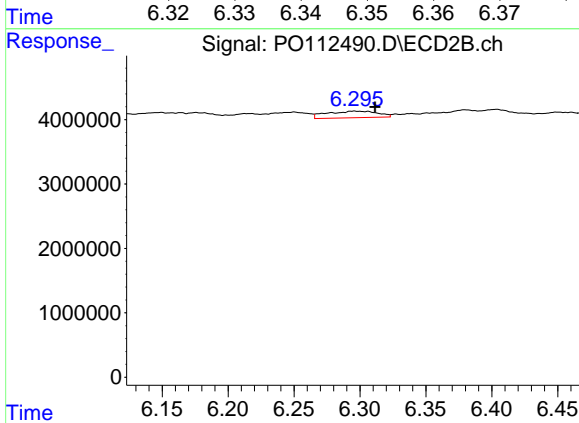
R.T.: 6.088 min
 Delta R.T.: 0.004 min
 Response: 6391872
 Conc: 14.95 ng/ml



#29 AR-1254-4

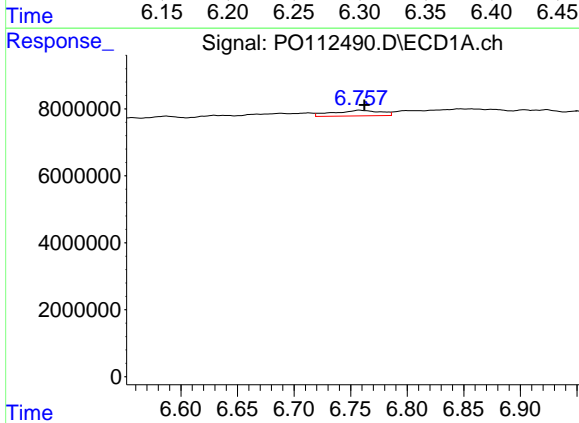
R.T.: 6.348 min
 Delta R.T.: 0.005 min
 Response: 1027778
 Conc: 1.87 ng/ml

Instrument :
 ECD_O
 ClientSampleId :
 COMP-1



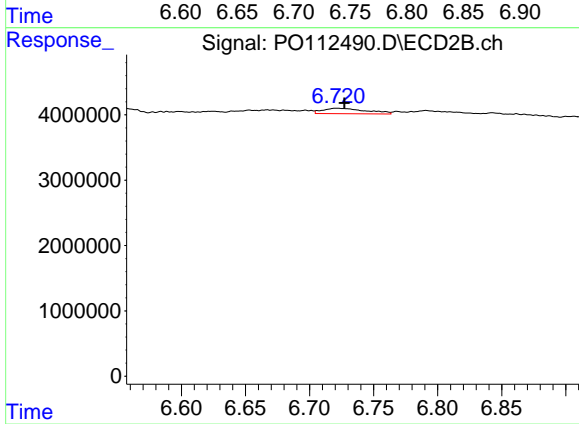
#29 AR-1254-4

R.T.: 6.296 min
 Delta R.T.: -0.016 min
 Response: 2766579
 Conc: 10.14 ng/ml



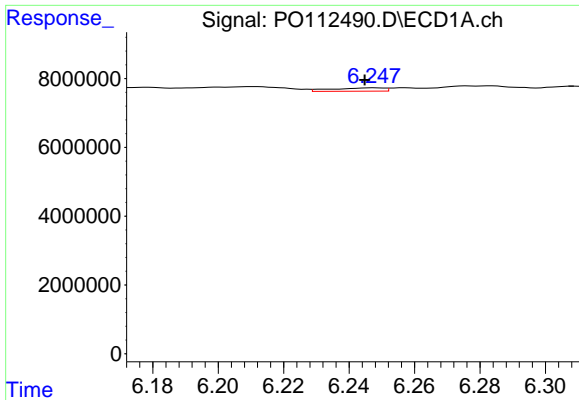
#30 AR-1254-5

R.T.: 6.758 min
 Delta R.T.: -0.004 min
 Response: 4830788
 Conc: 6.82 ng/ml



#30 AR-1254-5

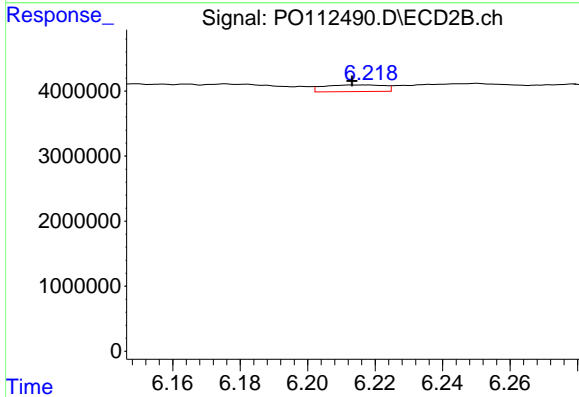
R.T.: 6.721 min
 Delta R.T.: -0.006 min
 Response: 1946405
 Conc: 5.83 ng/ml



#31 AR-1260-1

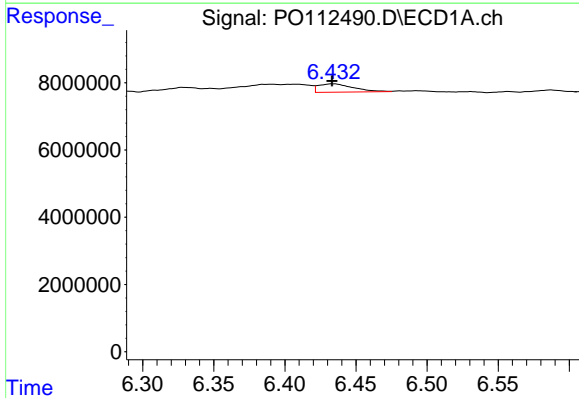
R.T.: 6.247 min
 Delta R.T.: 0.003 min
 Response: 1077174
 Conc: 2.45 ng/ml

Instrument :
 ECD_O
 ClientSampleId :
 COMP-1



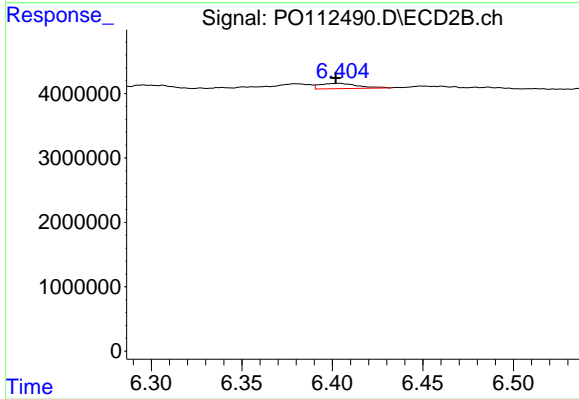
#31 AR-1260-1

R.T.: 6.217 min
 Delta R.T.: 0.004 min
 Response: 1265894
 Conc: 5.09 ng/ml



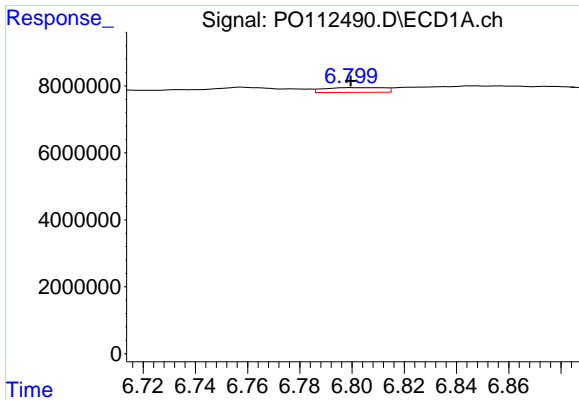
#32 AR-1260-2

R.T.: 6.434 min
 Delta R.T.: 0.000 min
 Response: 4182949
 Conc: 6.08 ng/ml



#32 AR-1260-2

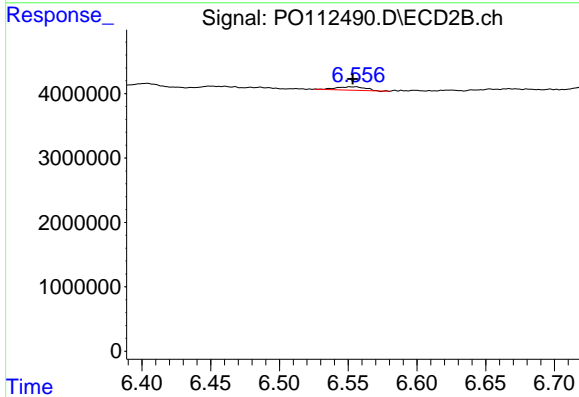
R.T.: 6.404 min
 Delta R.T.: 0.002 min
 Response: 1203838
 Conc: 3.65 ng/ml



#33 AR-1260-3

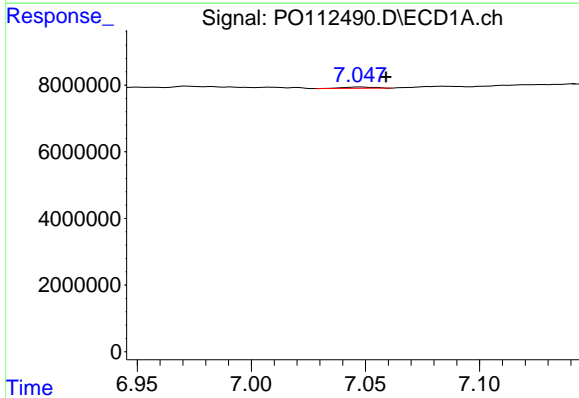
R.T.: 6.799 min
 Delta R.T.: 0.000 min
 Response: 2253407
 Conc: 3.83 ng/ml

Instrument :
 ECD_O
 ClientSampleId :
 COMP-1



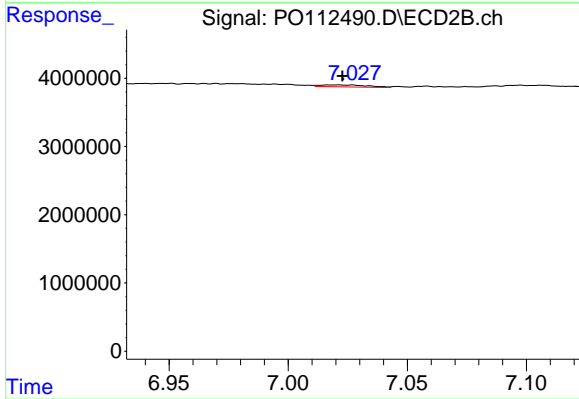
#33 AR-1260-3

R.T.: 6.555 min
 Delta R.T.: 0.002 min
 Response: 779320
 Conc: 3.03 ng/ml



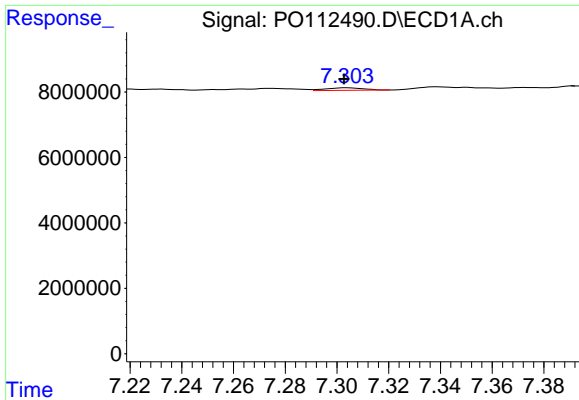
#34 AR-1260-4

R.T.: 7.048 min
 Delta R.T.: -0.011 min
 Response: 369561
 Conc: 0.82 ng/ml



#34 AR-1260-4

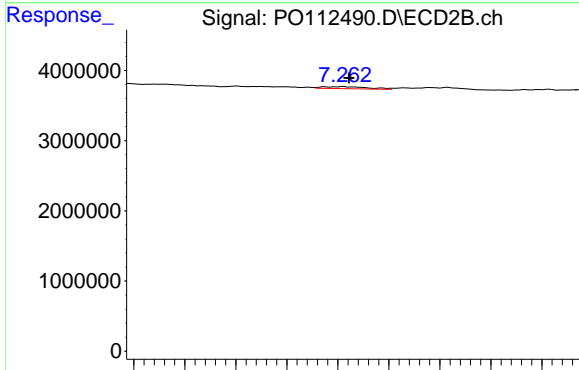
R.T.: 7.021 min
 Delta R.T.: -0.002 min
 Response: 397223
 Conc: 2.08 ng/ml



#35 AR-1260-5

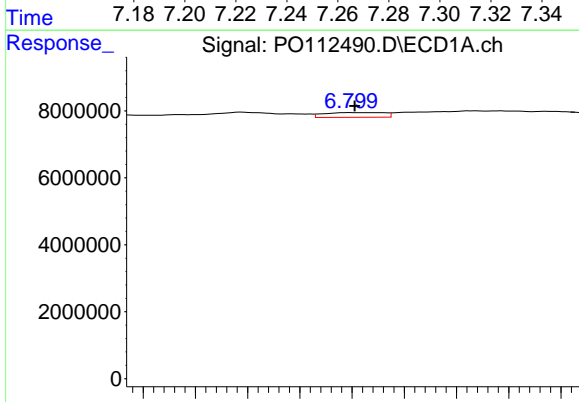
R.T.: 7.304 min
 Delta R.T.: 0.000 min
 Response: 758847
 Conc: 0.61 ng/ml

Instrument :
 ECD_O
 ClientSampleId :
 COMP-1



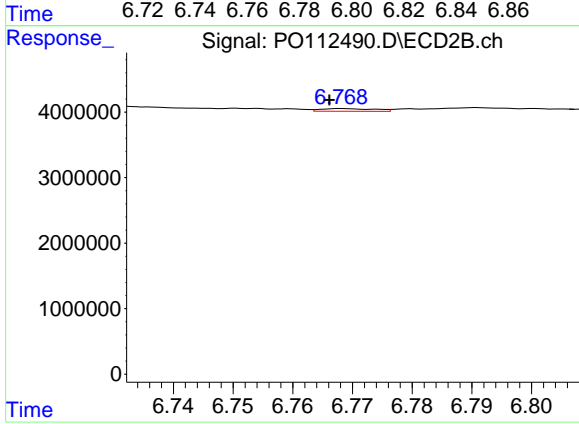
#35 AR-1260-5

R.T.: 7.262 min
 Delta R.T.: -0.002 min
 Response: 360067
 Conc: 0.87 ng/ml



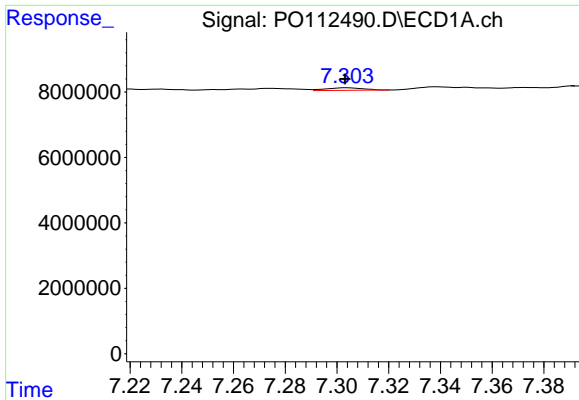
#36 AR-1262-1

R.T.: 6.799 min
 Delta R.T.: -0.002 min
 Response: 2253407
 Conc: 2.43 ng/ml



#36 AR-1262-1

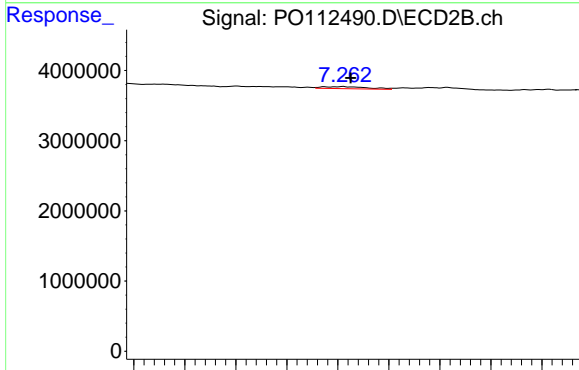
R.T.: 6.768 min
 Delta R.T.: 0.002 min
 Response: 252192
 Conc: 0.61 ng/ml



#37 AR-1262-2

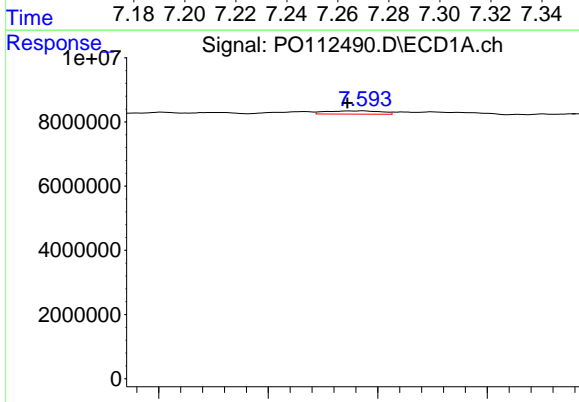
R.T.: 7.304 min
 Delta R.T.: 0.000 min
 Response: 758847
 Conc: 0.51 ng/ml

Instrument :
 ECD_O
 ClientSampleId :
 COMP-1



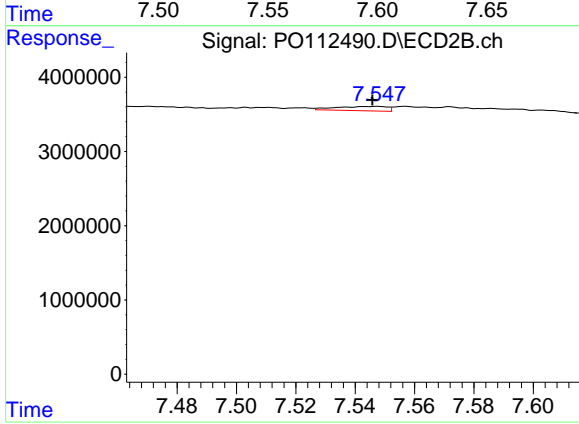
#37 AR-1262-2

R.T.: 7.262 min
 Delta R.T.: -0.003 min
 Response: 360067
 Conc: 0.70 ng/ml



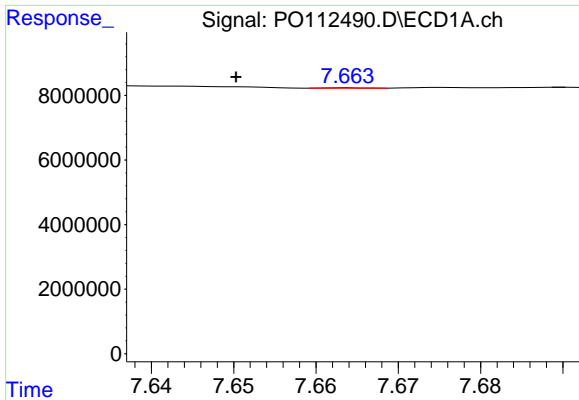
#38 AR-1262-3

R.T.: 7.593 min
 Delta R.T.: 0.007 min
 Response: 1794161
 Conc: 3.04 ng/ml



#38 AR-1262-3

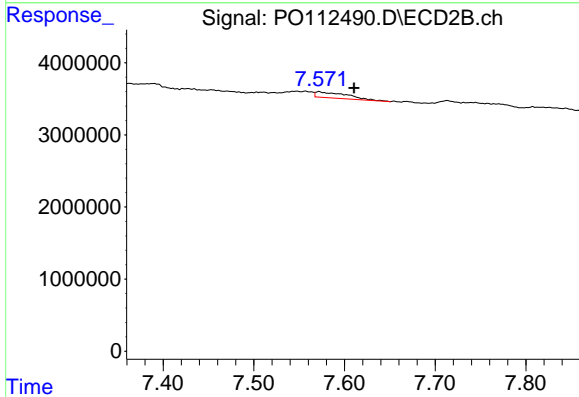
R.T.: 7.547 min
 Delta R.T.: 0.001 min
 Response: 706132
 Conc: 3.79 ng/ml



#39 AR-1262-4

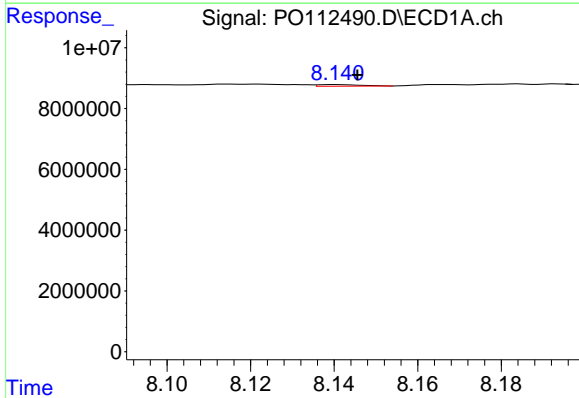
R.T.: 7.664 min
 Delta R.T.: 0.014 min
 Response: 39793
 Conc: 0.04 ng/ml

Instrument :
 ECD_O
 ClientSampleId :
 COMP-1



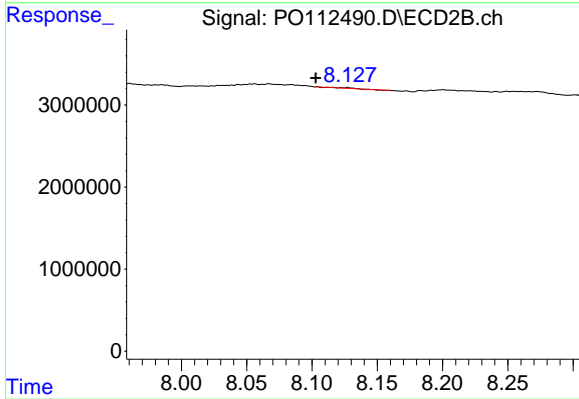
#39 AR-1262-4

R.T.: 7.572 min
 Delta R.T.: -0.039 min
 Response: 1934838
 Conc: 6.72 ng/ml



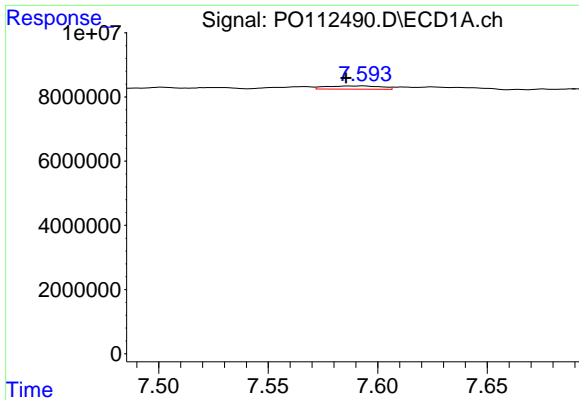
#40 AR-1262-5

R.T.: 8.141 min
 Delta R.T.: -0.005 min
 Response: 352825
 Conc: 0.81 ng/ml



#40 AR-1262-5

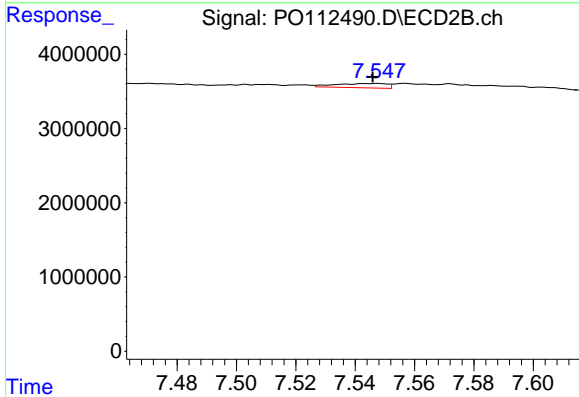
R.T.: 8.127 min
 Delta R.T.: 0.025 min
 Response: 30310
 Conc: 0.30 ng/ml



#41 AR-1268-1

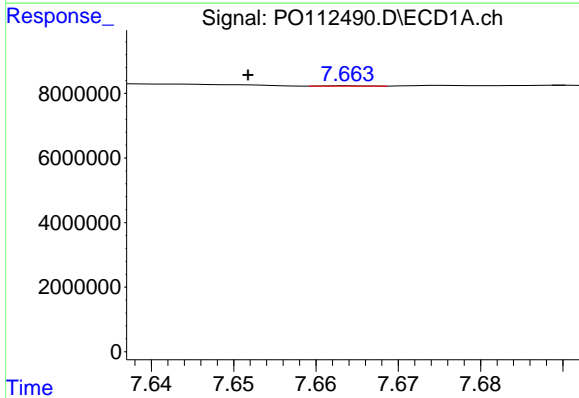
R.T.: 7.593 min
 Delta R.T.: 0.008 min
 Response: 1794161
 Conc: 1.02 ng/ml

Instrument :
 ECD_O
 ClientSampleId :
 COMP-1



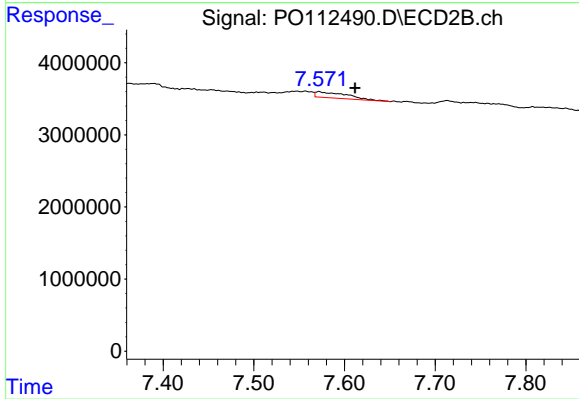
#41 AR-1268-1

R.T.: 7.547 min
 Delta R.T.: 0.001 min
 Response: 706132
 Conc: 1.36 ng/ml



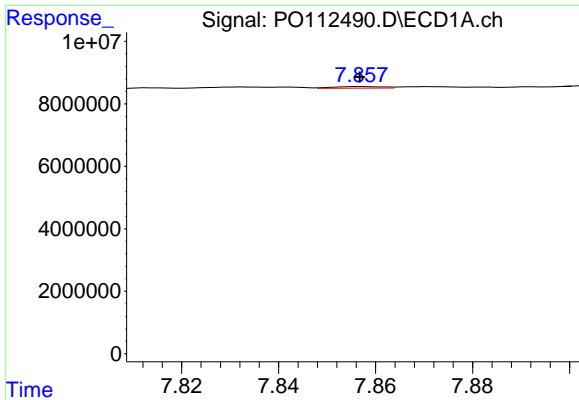
#42 AR-1268-2

R.T.: 7.664 min
 Delta R.T.: 0.012 min
 Response: 39793
 Conc: 0.03 ng/ml



#42 AR-1268-2

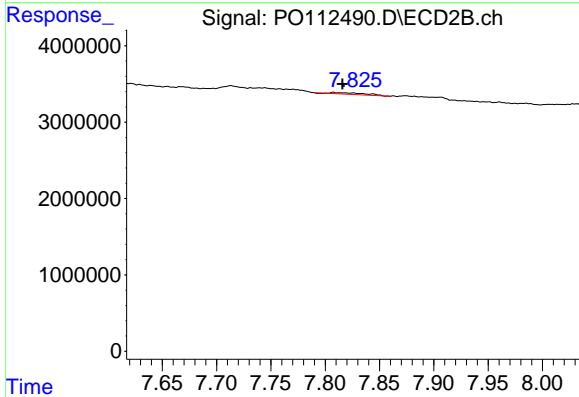
R.T.: 7.572 min
 Delta R.T.: -0.040 min
 Response: 1934838
 Conc: 4.55 ng/ml



#43 AR-1268-3

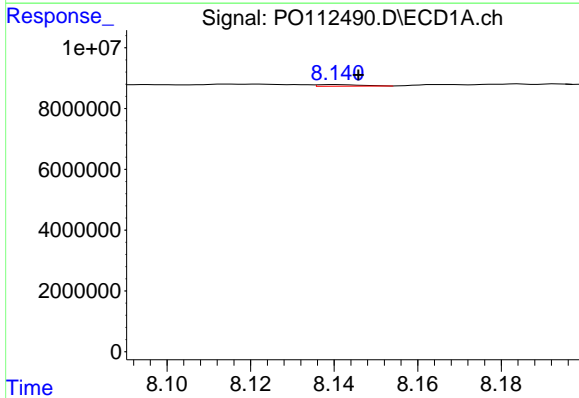
R.T.: 7.857 min
 Delta R.T.: 0.000 min
 Response: 365240
 Conc: 0.29 ng/ml

Instrument :
 ECD_O
 ClientSampleId :
 COMP-1



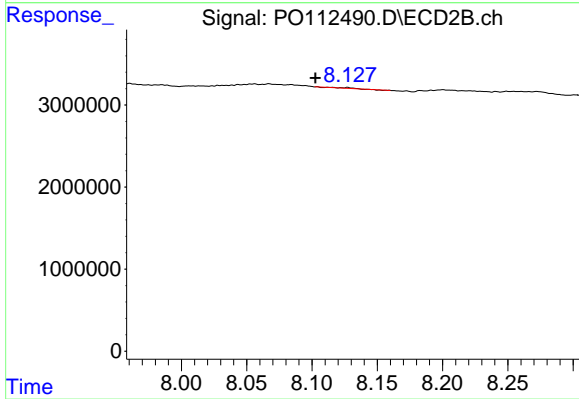
#43 AR-1268-3

R.T.: 7.808 min
 Delta R.T.: -0.008 min
 Response: 406246
 Conc: 1.26 ng/ml



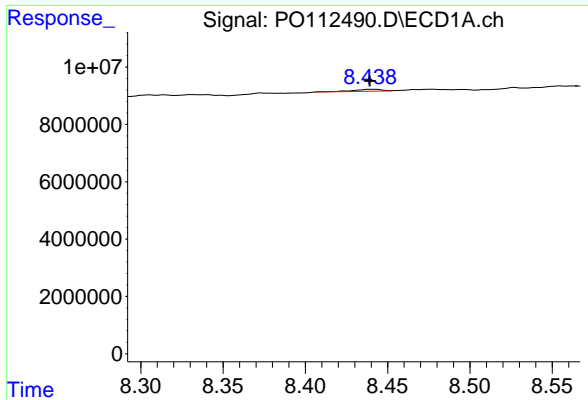
#44 AR-1268-4

R.T.: 8.141 min
 Delta R.T.: -0.005 min
 Response: 352825
 Conc: 0.73 ng/ml



#44 AR-1268-4

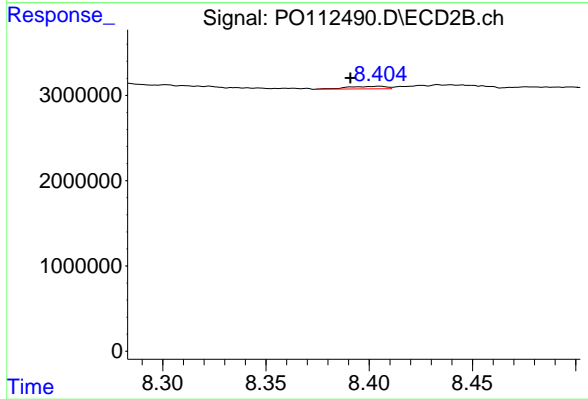
R.T.: 8.127 min
 Delta R.T.: 0.025 min
 Response: 30310
 Conc: 0.27 ng/ml



#45 AR-1268-5

R.T.: 8.439 min
 Delta R.T.: 0.000 min
 Response: 795681
 Conc: 0.24 ng/ml

Instrument :
 ECD_O
 ClientSampleId :
 COMP-1



#45 AR-1268-5

R.T.: 8.405 min
 Delta R.T.: 0.014 min
 Response: 391241
 Conc: 0.53 ng/ml