

Data Path : Z:\pestpcbsrv\HPCHEM1\ECD\_0\Data\P0072425\  
 Data File : PO112491.D  
 Signal(s) : Signal #1: ECD1A.ch Signal #2: ECD2B.ch  
 Acq On : 25 Jul 2025 04:05  
 Operator : YP/AJ  
 Sample : Q2685-02 10X  
 Misc :  
 ALS Vial : 34 Sample Multiplier: 1

Instrument :  
 ECD\_0  
 ClientSampleId :  
 COMP-2

Integration File signal 1: autoint1.e  
 Integration File signal 2: autoint2.e  
 Quant Time: Jul 25 06:25:50 2025  
 Quant Method : Z:\pestpcbsrv\HPCHEM1\ECD\_0\methods\P0072325.M  
 Quant Title : GC EXTRACTABLES  
 QLast Update : Thu Jul 24 04:54:06 2025  
 Response via : Initial Calibration  
 Integrator: ChemStation

Volume Inj. : 2 µl  
 Signal #1 Phase : ZB-MR1 Signal #2 Phase: ZB-MR2  
 Signal #1 Info : 30Mx0.32mmx 0.50µ Signal #2 Info : 30M x 0.32mm x 0.25µm

Compound	RT#1	RT#2	Resp#1	Resp#2	ng/ml	ng/ml
System Monitoring Compounds						
1) SA Tetrachlo...	3.672	3.664	4698320	3689020	0.578	0.742 #
2) SA Decachlor...	8.697	8.642	5951839	2196389	0.814	1.243 #
Target Compounds						
3) L1 AR-1016-1	4.771	4.751	-242020	978912	N.D.	5.594 #
4) L1 AR-1016-2	4.771	4.751	-242020	978912	N.D.	3.758 #
5) L1 AR-1016-3	4.833	4.980f	4448577	3757200	17.000	27.633 #
6) L1 AR-1016-4	5.002f	4.980	6673402	3757200	31.502	33.823
8) L2 AR-1221-1	3.876	3.863	558438	672380	5.777	9.996 #
9) L2 AR-1221-2	3.966	3.969	281684	590613	3.920	11.643 #
10) L2 AR-1221-3	4.096f	4.035	3325013	516491	13.988	3.258 #
11) L3 AR-1232-1	4.096f	4.035	3325013	516491	17.783	4.081 #
12) L3 AR-1232-2	4.556	4.751	14872747	978912	138.191	7.464 #
13) L3 AR-1232-3	4.771	4.980f	-242020	3757200	N.D.	55.913 #
14) L3 AR-1232-4	5.002f	5.021	6673402	215826	63.714	3.607 #
15) L3 AR-1232-5	5.002	5.188	6673402	-84424	98.310	N.D. #
16) L4 AR-1242-1	4.771	4.751	-242020	978912	N.D.	6.180 #
17) L4 AR-1242-2	4.771	4.751	-242020	978912	N.D.	4.189 #
18) L4 AR-1242-3	4.833	4.980f	4448577	3757200	18.798	31.003 #
19) L4 AR-1242-4	5.002f	5.021	6673402	215826	34.350	1.758 #
20) L4 AR-1242-5	5.585	5.523	8772089	2469132	41.007	15.339 #
21) L5 AR-1248-1	4.771	4.751	-242020	978912	N.D.	8.056 #
22) L5 AR-1248-2	5.002	4.980	6673402	3757200	26.159	22.195
24) L5 AR-1248-4	5.550	5.188	6538636	-84424	12.869	N.D. #
25) L5 AR-1248-5	5.585	5.580	8772089	630751	25.092	2.937 #
26) L6 AR-1254-1	5.550	5.523	6538636	2469132	11.911	7.514 #
27) L6 AR-1254-2	5.707	5.679	4891919	2164602	10.067	7.477 #
28) L6 AR-1254-3	6.117	6.088	3306917	2736511	4.443	6.402 #
29) L6 AR-1254-4	6.327	6.301	1597412	973126	2.906	3.565
30) L6 AR-1254-5	6.765	6.724	1099044	535557	1.553	1.603
31) L7 AR-1260-1	6.265	6.236	1530286	1165596	3.483	4.690 #
32) L7 AR-1260-2	6.432	6.411	273347	502337	0.397	1.525 #
33) L7 AR-1260-3	6.801	6.544	2317427	500754	3.941	1.949 #
34) L7 AR-1260-4	7.061	7.024	1172143	1135150	2.599	5.934 #
35) L7 AR-1260-5	7.320	7.289	3568311	1717212	2.880	4.166 #
36) L8 AR-1262-1	6.801	6.770	2317427	331744	2.494	0.800 #
37) L8 AR-1262-2	7.320	7.289	3568311	1717212	2.400	3.331 #
38) L8 AR-1262-3	7.589	7.543	533357	354945	0.904	1.903 #
39) L8 AR-1262-4	7.646	7.576	30761	222653	0.031	0.773 #
40) L8 AR-1262-5	8.155	8.114	842799	192898	1.942	1.939
41) L9 AR-1268-1	7.589	7.543	533357	354945	0.305	0.685 #
42) L9 AR-1268-2	7.646	7.576f	30761	222653	0.021	0.524 #
43) L9 AR-1268-3	7.857	0.000	134283	0	0.107	N.D. #

Data Path : Z:\pestpcbsrv\HPCHEM1\ECD\_0\Data\P0072425\  
 Data File : P0112491.D  
 Signal(s) : Signal #1: ECD1A.ch Signal #2: ECD2B.ch  
 Acq On : 25 Jul 2025 04:05  
 Operator : YP/AJ  
 Sample : Q2685-02 10X  
 Misc :  
 ALS Vial : 34 Sample Multiplier: 1

Instrument :  
 ECD\_0  
 ClientSampleId :  
 COMP-2

Integration File signal 1: autoint1.e  
 Integration File signal 2: autoint2.e  
 Quant Time: Jul 25 06:25:50 2025  
 Quant Method : Z:\pestpcbsrv\HPCHEM1\ECD\_0\methods\P0072325.M  
 Quant Title : GC EXTRACTABLES  
 QLast Update : Thu Jul 24 04:54:06 2025  
 Response via : Initial Calibration  
 Integrator: ChemStation

Volume Inj. : 2 µl  
 Signal #1 Phase : ZB-MR1 Signal #2 Phase: ZB-MR2  
 Signal #1 Info : 30Mx0.32mmx 0.50µ Signal #2 Info : 30M x 0.32mm x 0.25µm

	Compound	RT#1	RT#2	Resp#1	Resp#2	ng/ml	ng/ml
44)	L9 AR-1268-4	8.155	8.114	842799	192898	1.749	1.733
45)	L9 AR-1268-5	8.438	8.427f	395840	72583	0.118	0.099

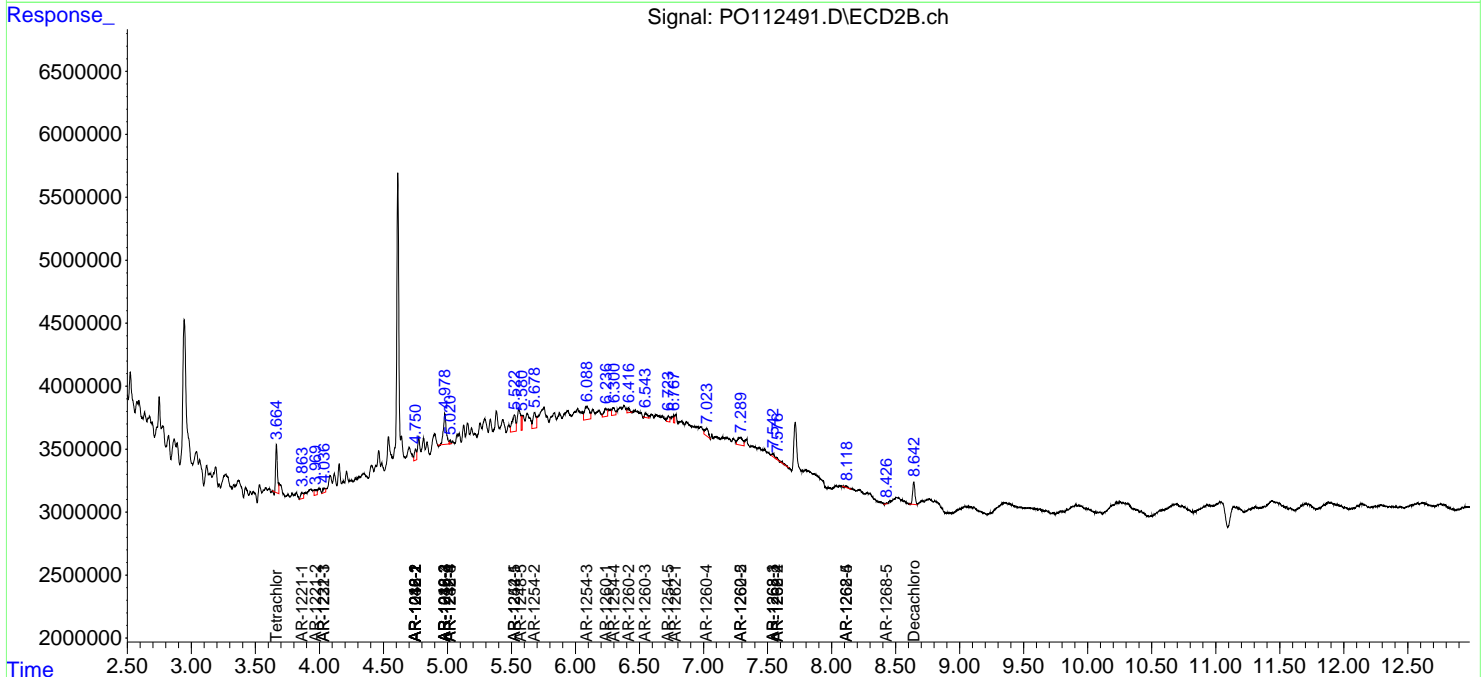
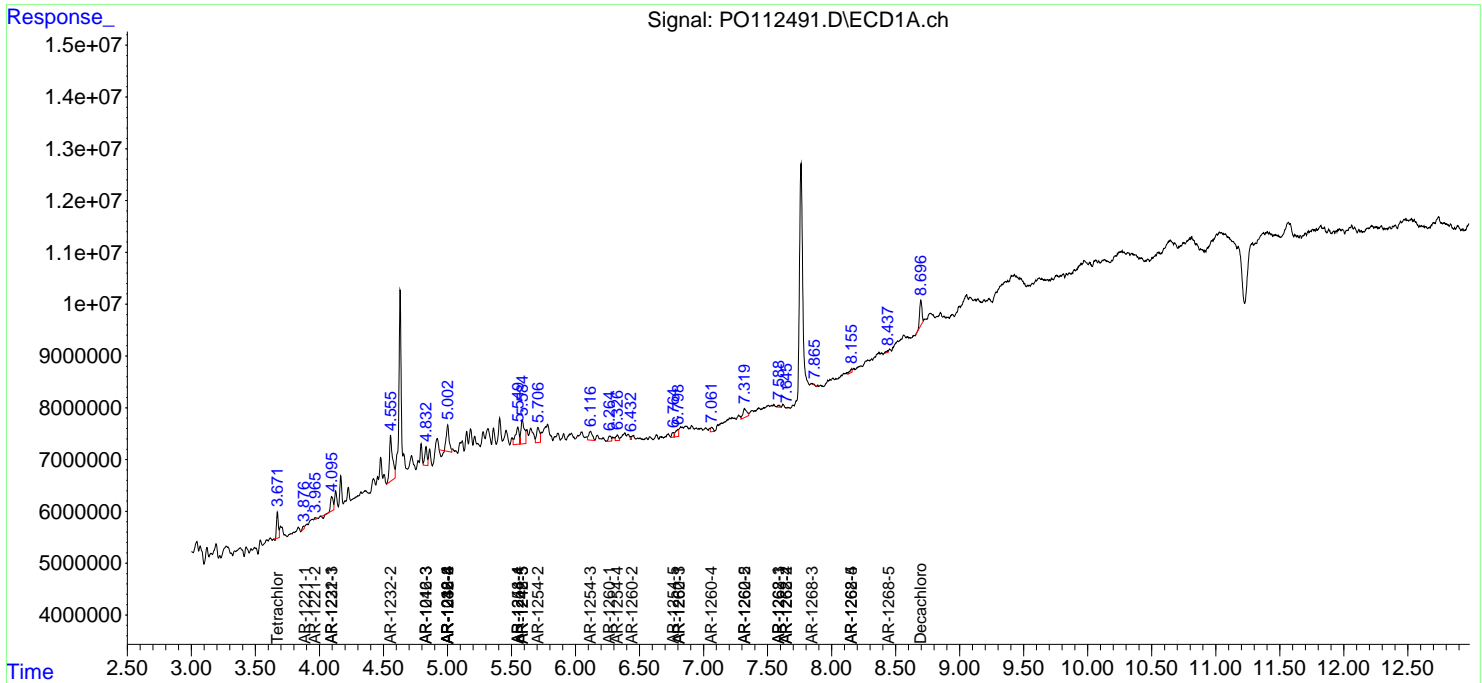
(f)=RT Delta > 1/2 Window (#)=Amounts differ by > 25% (m)=manual int.

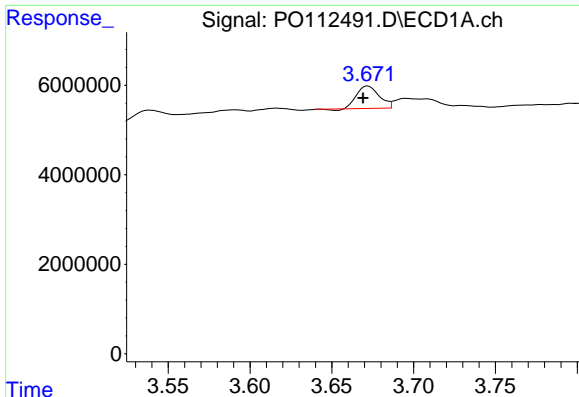
Data Path : Z:\pestpcbsrv\HPCHEM1\ECD\_O\Data\P0072425\  
 Data File : P0112491.D  
 Signal(s) : Signal #1: ECD1A.ch Signal #2: ECD2B.ch  
 Acq On : 25 Jul 2025 04:05  
 Operator : YP/AJ  
 Sample : Q2685-02 10X  
 Misc :  
 ALS Vial : 34 Sample Multiplier: 1

Instrument :  
 ECD\_O  
 ClientSampleId :  
 COMP-2

Integration File signal 1: autoint1.e  
 Integration File signal 2: autoint2.e  
 Quant Time: Jul 25 06:25:50 2025  
 Quant Method : Z:\pestpcbsrv\HPCHEM1\ECD\_O\methods\P0072325.M  
 Quant Title : GC EXTRACTABLES  
 QLast Update : Thu Jul 24 04:54:06 2025  
 Response via : Initial Calibration  
 Integrator: ChemStation

Volume Inj. : 2 µl  
 Signal #1 Phase : ZB-MR1 Signal #2 Phase: ZB-MR2  
 Signal #1 Info : 30Mx0.32mmx 0.50µ Signal #2 Info : 30M x 0.32mm x 0.25µm

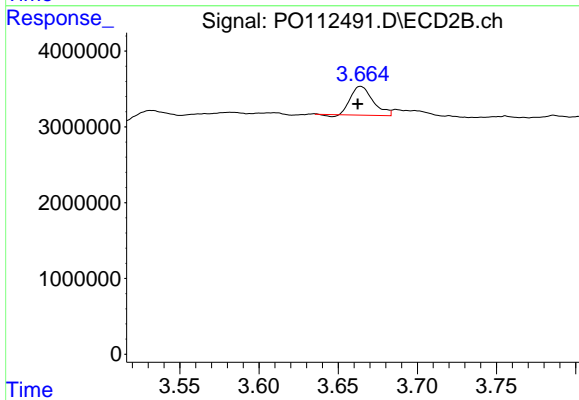




#1 Tetrachloro-m-xylene

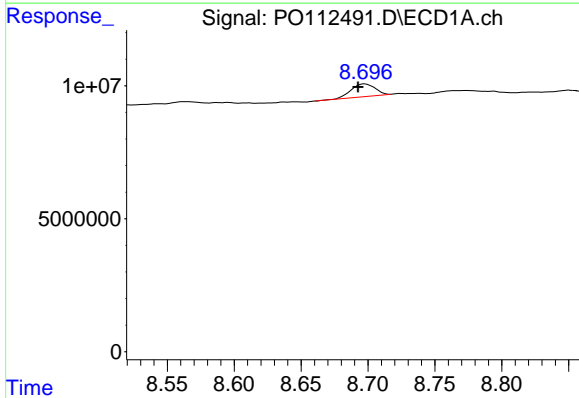
R.T.: 3.672 min  
 Delta R.T.: 0.003 min  
 Response: 4698320  
 Conc: 0.58 ng/ml

Instrument :  
 ECD\_O  
 ClientSampleId :  
 COMP-2



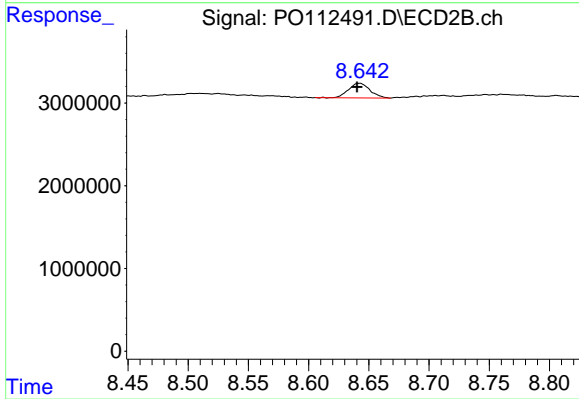
#1 Tetrachloro-m-xylene

R.T.: 3.664 min  
 Delta R.T.: 0.002 min  
 Response: 3689020  
 Conc: 0.74 ng/ml



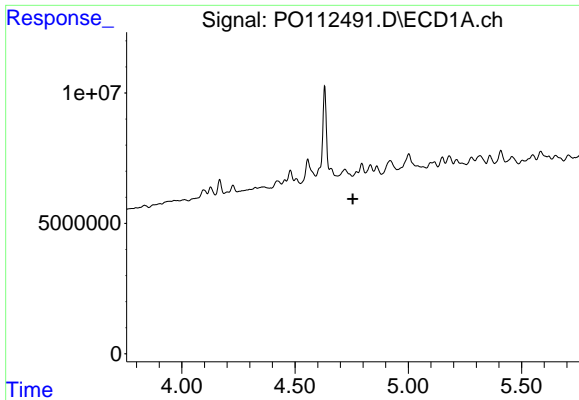
#2 Decachlorobiphenyl

R.T.: 8.697 min  
 Delta R.T.: 0.005 min  
 Response: 5951839  
 Conc: 0.81 ng/ml



#2 Decachlorobiphenyl

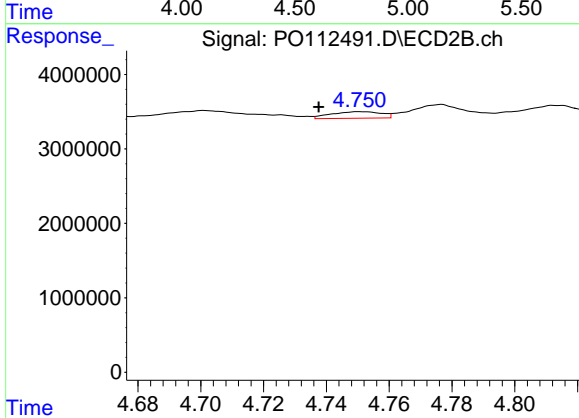
R.T.: 8.642 min  
 Delta R.T.: 0.002 min  
 Response: 2196389  
 Conc: 1.24 ng/ml



#3 AR-1016-1

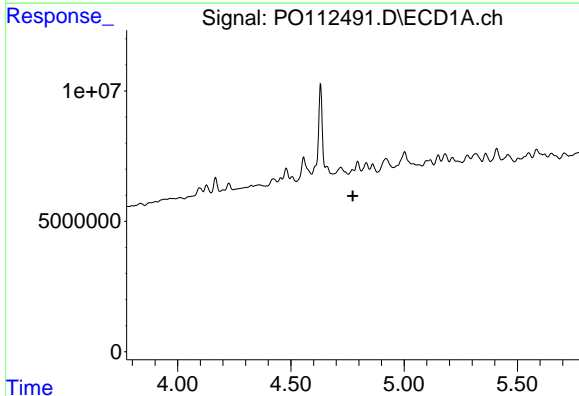
R.T.: 4.771 min  
 Delta R.T.: 0.015 min  
 Response: -242020  
 Conc: N.D.

Instrument :  
 ECD\_O  
 ClientSampleId :  
 COMP-2



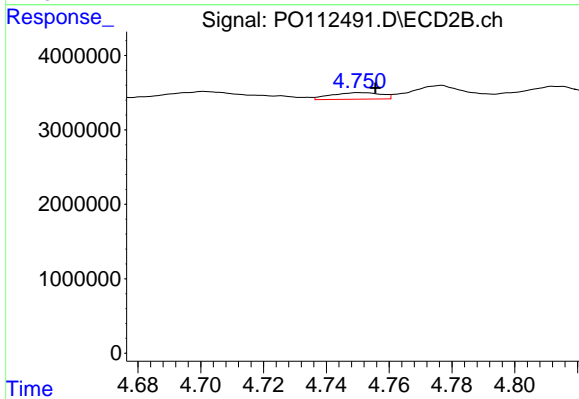
#3 AR-1016-1

R.T.: 4.751 min  
 Delta R.T.: 0.014 min  
 Response: 978912  
 Conc: 5.59 ng/ml



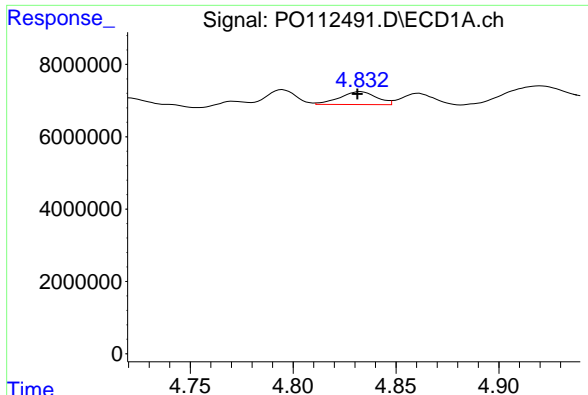
#4 AR-1016-2

R.T.: 4.771 min  
 Delta R.T.: -0.003 min  
 Response: -242020  
 Conc: N.D.



#4 AR-1016-2

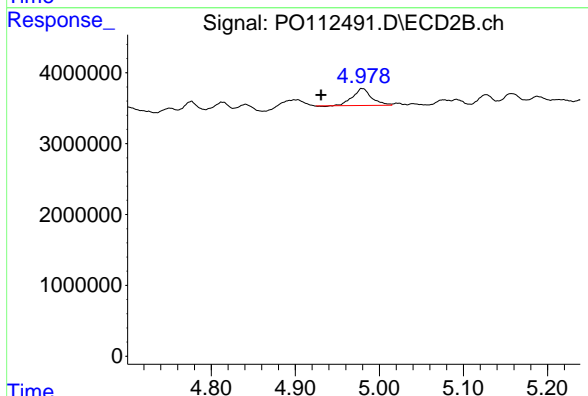
R.T.: 4.751 min  
 Delta R.T.: -0.004 min  
 Response: 978912  
 Conc: 3.76 ng/ml



#5 AR-1016-3

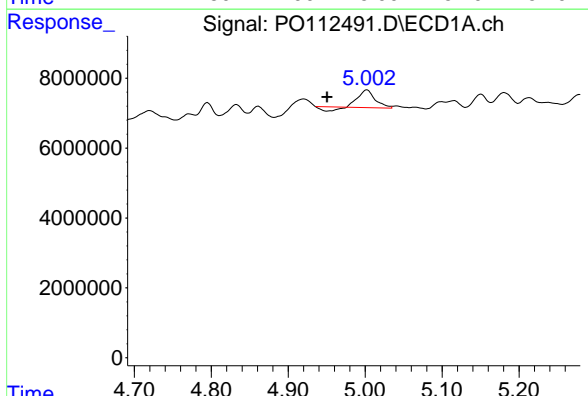
R.T.: 4.833 min  
 Delta R.T.: 0.002 min  
 Response: 4448577  
 Conc: 17.00 ng/ml

Instrument :  
 ECD\_O  
 ClientSampleId :  
 COMP-2



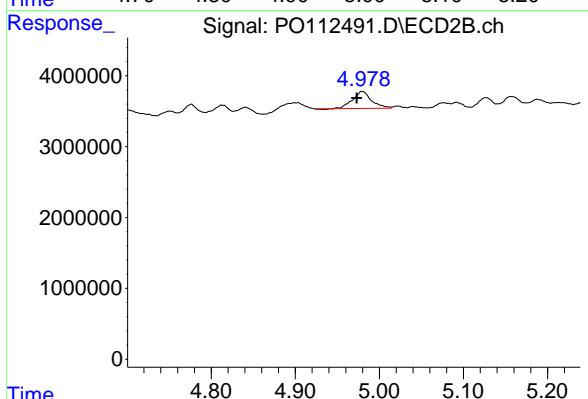
#5 AR-1016-3

R.T.: 4.980 min  
 Delta R.T.: 0.049 min  
 Response: 3757200  
 Conc: 27.63 ng/ml



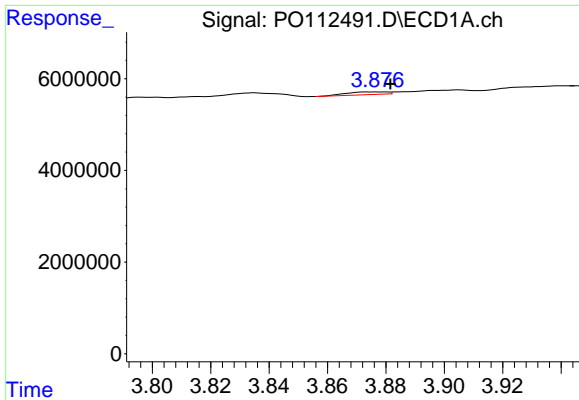
#6 AR-1016-4

R.T.: 5.002 min  
 Delta R.T.: 0.052 min  
 Response: 6673402  
 Conc: 31.50 ng/ml



#6 AR-1016-4

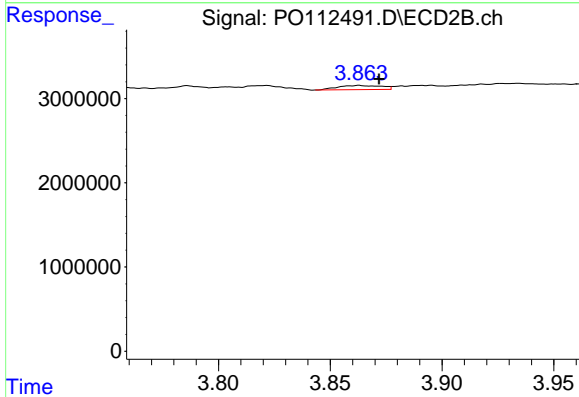
R.T.: 4.980 min  
 Delta R.T.: 0.007 min  
 Response: 3757200  
 Conc: 33.82 ng/ml



#8 AR-1221-1

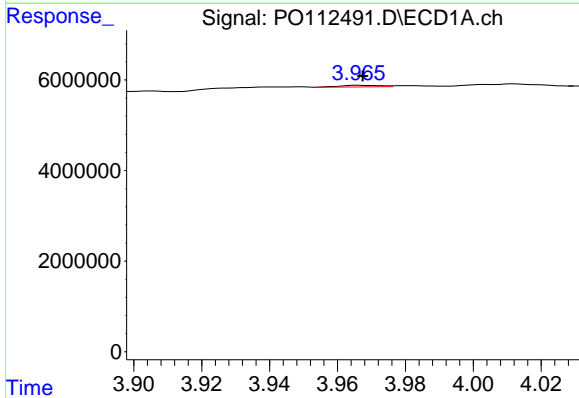
R.T.: 3.876 min  
 Delta R.T.: -0.005 min  
 Response: 558438  
 Conc: 5.78 ng/ml

Instrument :  
 ECD\_O  
 ClientSampleId :  
 COMP-2



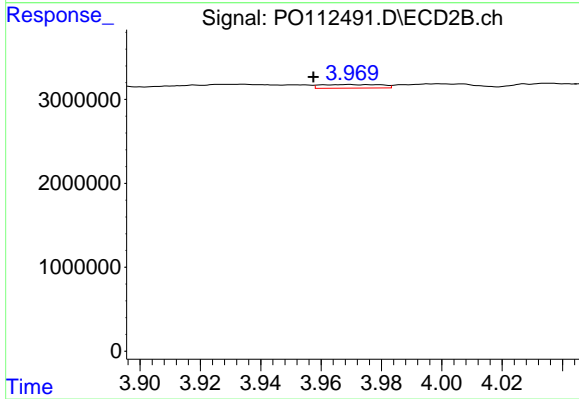
#8 AR-1221-1

R.T.: 3.863 min  
 Delta R.T.: -0.009 min  
 Response: 672380  
 Conc: 10.00 ng/ml



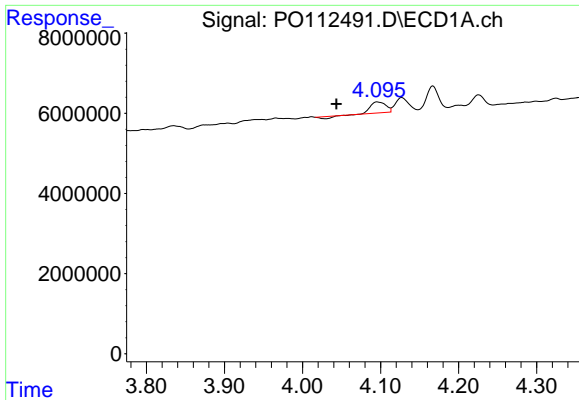
#9 AR-1221-2

R.T.: 3.966 min  
 Delta R.T.: -0.001 min  
 Response: 281684  
 Conc: 3.92 ng/ml



#9 AR-1221-2

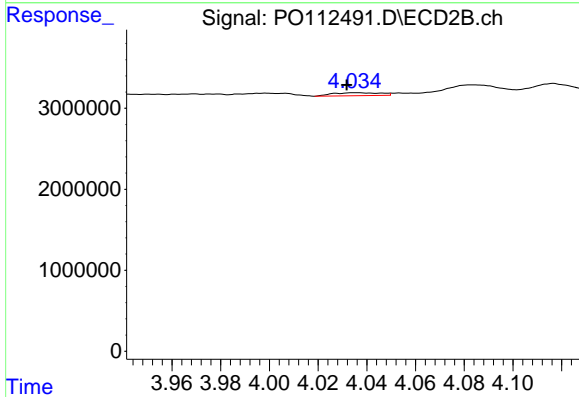
R.T.: 3.969 min  
 Delta R.T.: 0.012 min  
 Response: 590613  
 Conc: 11.64 ng/ml



#10 AR-1221-3

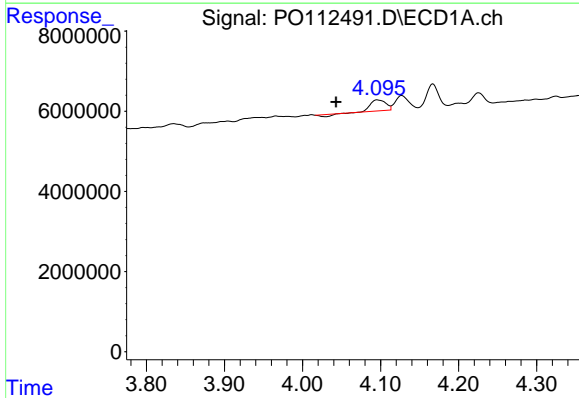
R.T.: 4.096 min  
 Delta R.T.: 0.052 min  
 Response: 3325013  
 Conc: 13.99 ng/ml

Instrument :  
 ECD\_O  
 ClientSampleId :  
 COMP-2



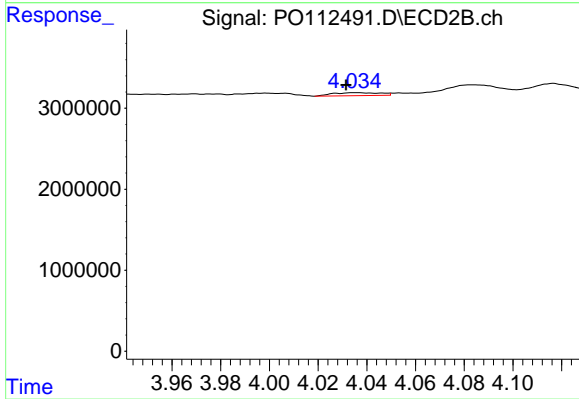
#10 AR-1221-3

R.T.: 4.035 min  
 Delta R.T.: 0.004 min  
 Response: 516491  
 Conc: 3.26 ng/ml



#11 AR-1232-1

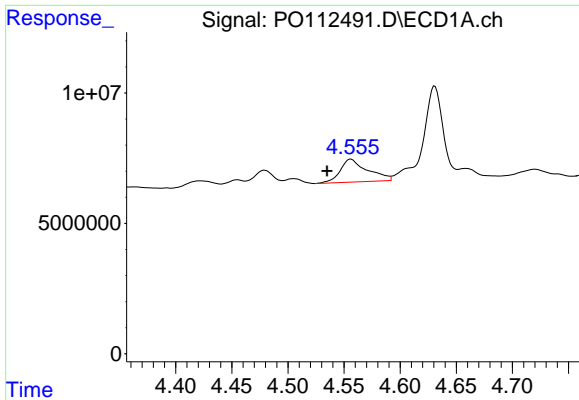
R.T.: 4.096 min  
 Delta R.T.: 0.052 min  
 Response: 3325013  
 Conc: 17.78 ng/ml



#11 AR-1232-1

R.T.: 4.035 min  
 Delta R.T.: 0.004 min  
 Response: 516491  
 Conc: 4.08 ng/ml

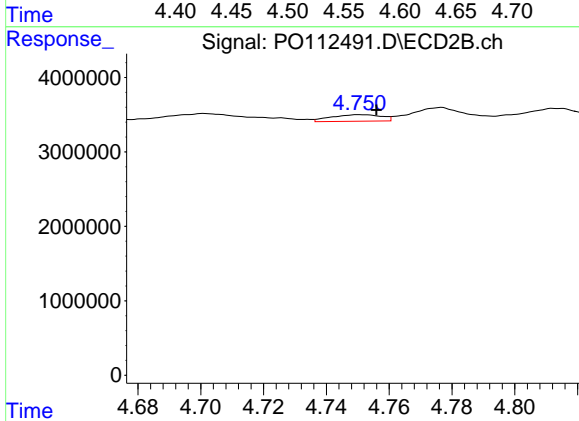




#12 AR-1232-2

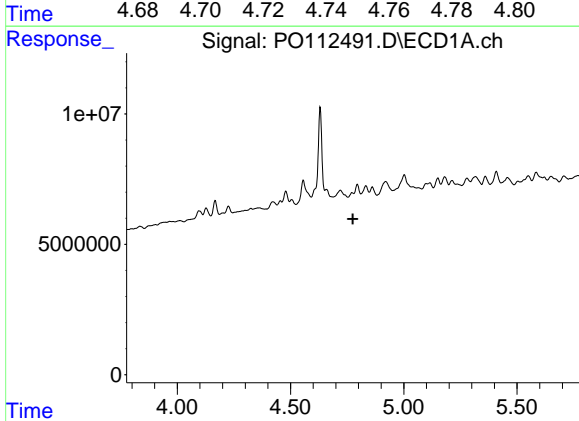
R.T.: 4.556 min  
 Delta R.T.: 0.021 min  
 Response: 14872747  
 Conc: 138.19 ng/ml

Instrument :  
 ECD\_O  
 ClientSampleId :  
 COMP-2



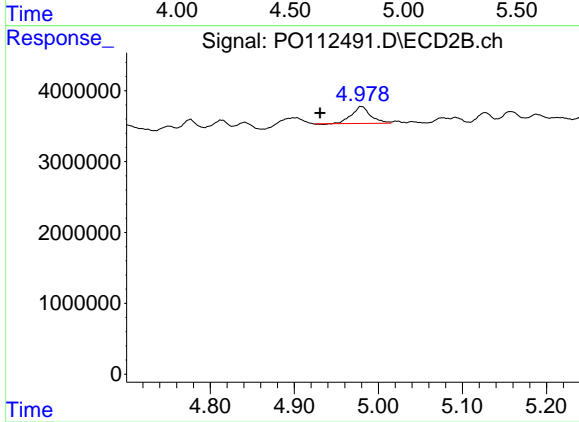
#12 AR-1232-2

R.T.: 4.751 min  
 Delta R.T.: -0.005 min  
 Response: 978912  
 Conc: 7.46 ng/ml



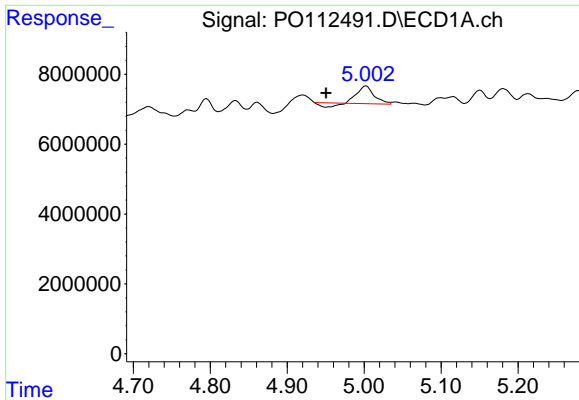
#13 AR-1232-3

R.T.: 4.771 min  
 Delta R.T.: -0.004 min  
 Response: -242020  
 Conc: N.D.



#13 AR-1232-3

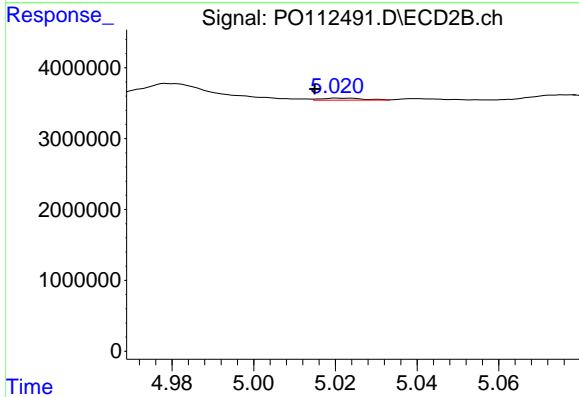
R.T.: 4.980 min  
 Delta R.T.: 0.049 min  
 Response: 3757200  
 Conc: 55.91 ng/ml



#14 AR-1232-4

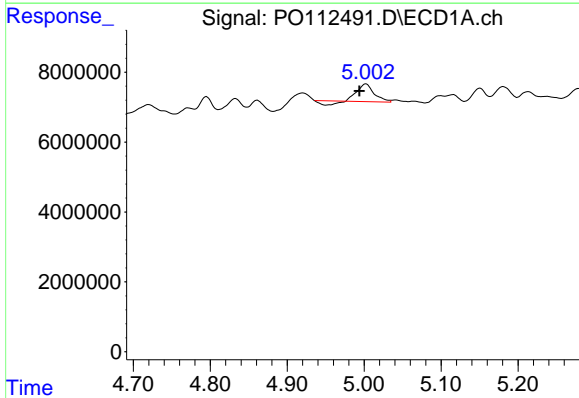
R.T.: 5.002 min  
 Delta R.T.: 0.052 min  
 Response: 6673402  
 Conc: 63.71 ng/ml

Instrument :  
 ECD\_O  
 ClientSampleId :  
 COMP-2



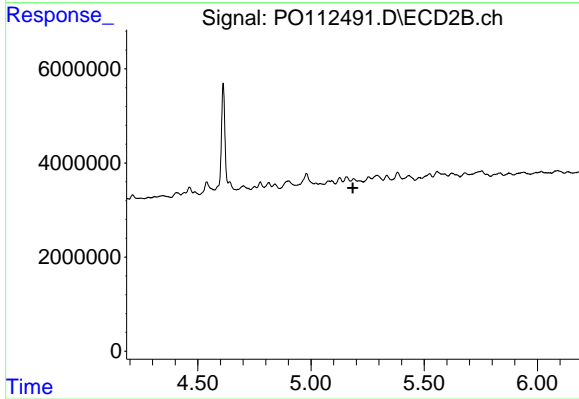
#14 AR-1232-4

R.T.: 5.021 min  
 Delta R.T.: 0.006 min  
 Response: 215826  
 Conc: 3.61 ng/ml



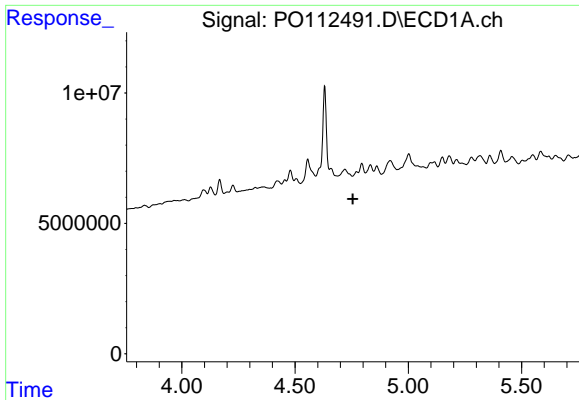
#15 AR-1232-5

R.T.: 5.002 min  
 Delta R.T.: 0.008 min  
 Response: 6673402  
 Conc: 98.31 ng/ml



#15 AR-1232-5

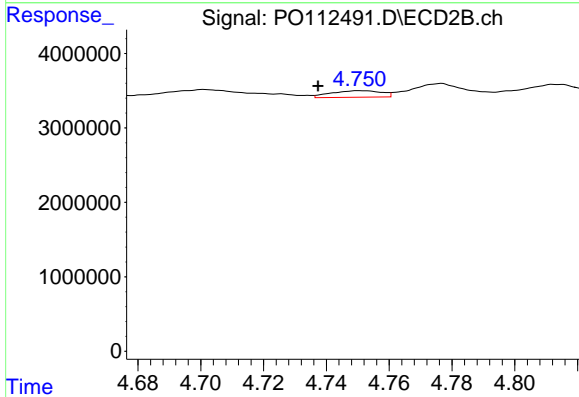
R.T.: 5.188 min  
 Delta R.T.: 0.002 min  
 Response: -84424  
 Conc: N.D.



#16 AR-1242-1

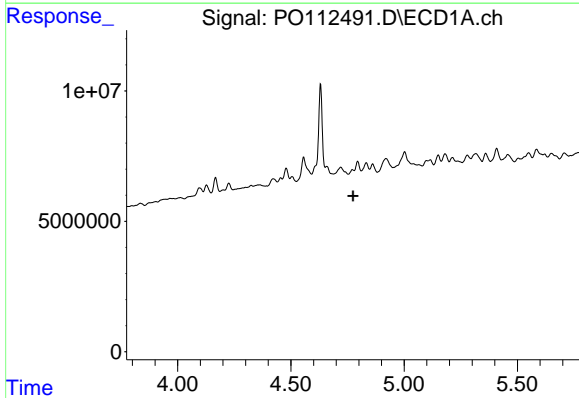
R.T.: 4.771 min  
 Delta R.T.: 0.016 min  
 Response: -242020  
 Conc: N.D.

Instrument :  
 ECD\_O  
 ClientSampleId :  
 COMP-2



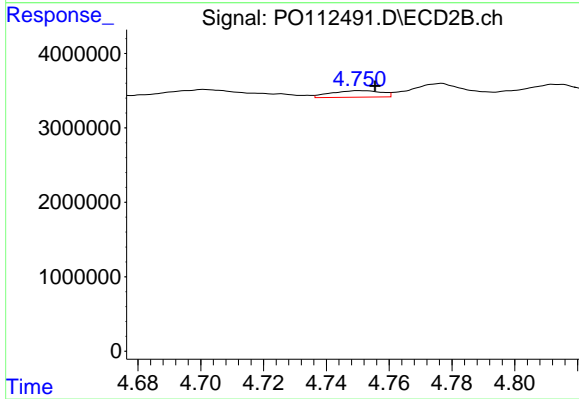
#16 AR-1242-1

R.T.: 4.751 min  
 Delta R.T.: 0.014 min  
 Response: 978912  
 Conc: 6.18 ng/ml



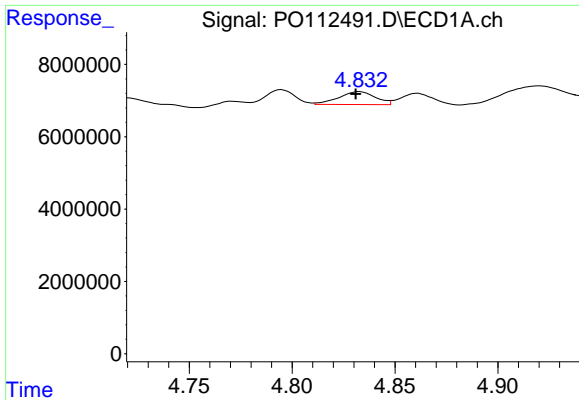
#17 AR-1242-2

R.T.: 4.771 min  
 Delta R.T.: -0.003 min  
 Response: -242020  
 Conc: N.D.



#17 AR-1242-2

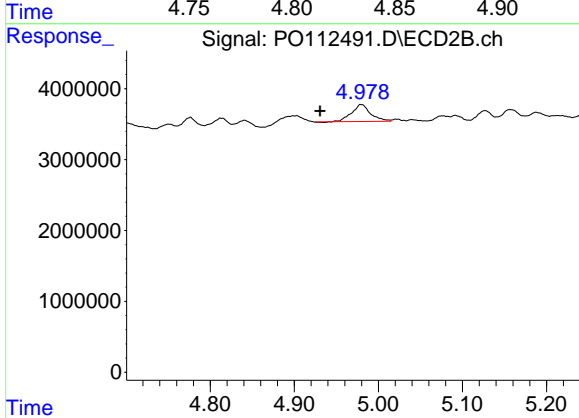
R.T.: 4.751 min  
 Delta R.T.: -0.004 min  
 Response: 978912  
 Conc: 4.19 ng/ml



#18 AR-1242-3

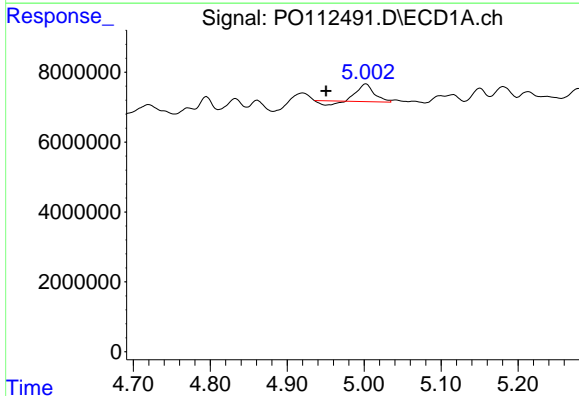
R.T.: 4.833 min  
 Delta R.T.: 0.002 min  
 Response: 4448577  
 Conc: 18.80 ng/ml

Instrument :  
 ECD\_O  
 ClientSampleId :  
 COMP-2



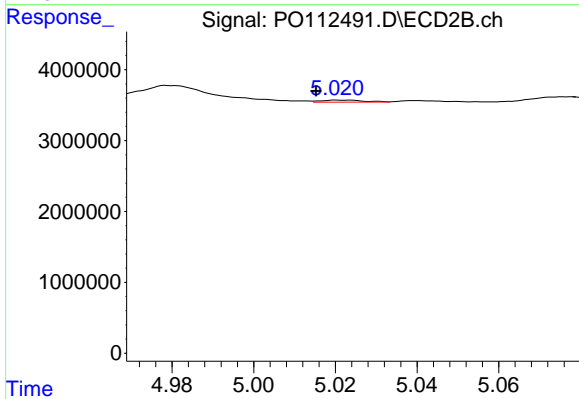
#18 AR-1242-3

R.T.: 4.980 min  
 Delta R.T.: 0.049 min  
 Response: 3757200  
 Conc: 31.00 ng/ml



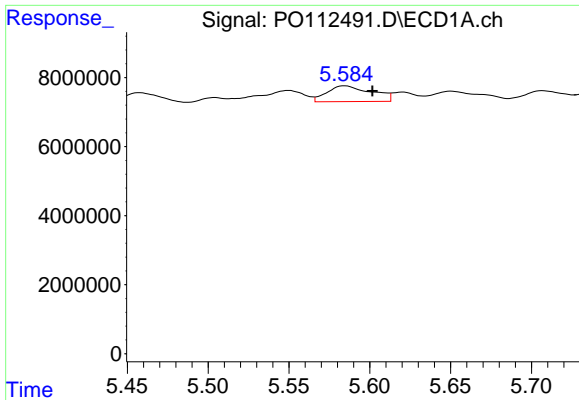
#19 AR-1242-4

R.T.: 5.002 min  
 Delta R.T.: 0.052 min  
 Response: 6673402  
 Conc: 34.35 ng/ml



#19 AR-1242-4

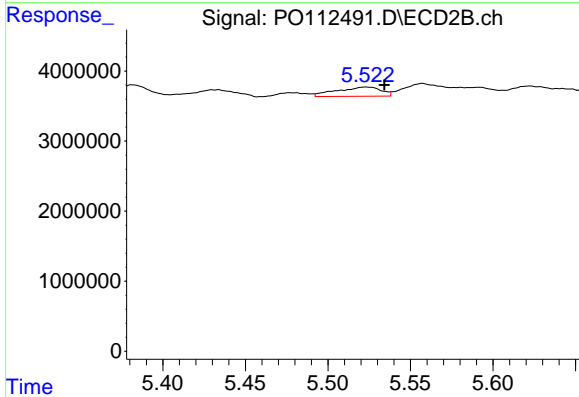
R.T.: 5.021 min  
 Delta R.T.: 0.006 min  
 Response: 215826  
 Conc: 1.76 ng/ml



#20 AR-1242-5

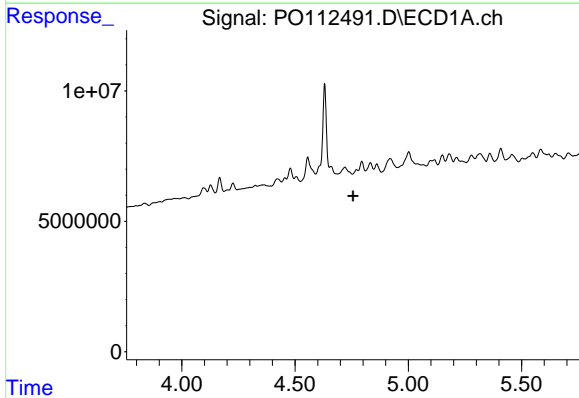
R.T.: 5.585 min  
 Delta R.T.: -0.017 min  
 Response: 8772089  
 Conc: 41.01 ng/ml

Instrument :  
 ECD\_O  
 ClientSampleId :  
 COMP-2



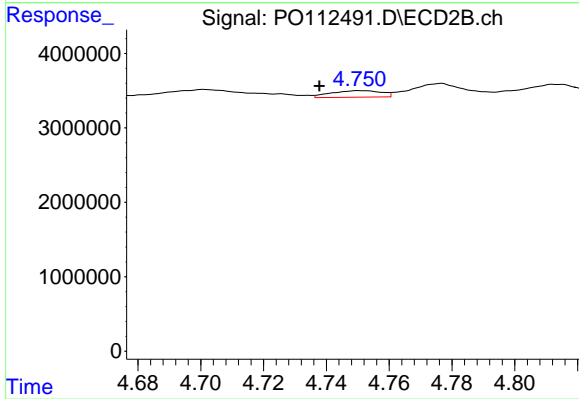
#20 AR-1242-5

R.T.: 5.523 min  
 Delta R.T.: -0.011 min  
 Response: 2469132  
 Conc: 15.34 ng/ml



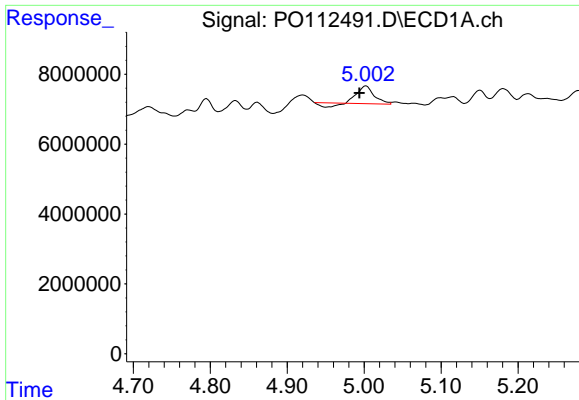
#21 AR-1248-1

R.T.: 4.771 min  
 Delta R.T.: 0.015 min  
 Response: -242020  
 Conc: N.D.



#21 AR-1248-1

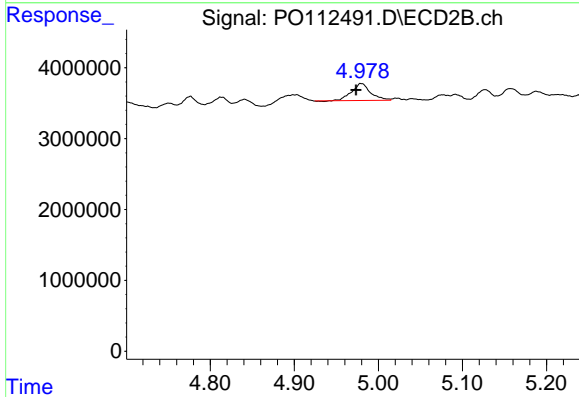
R.T.: 4.751 min  
 Delta R.T.: 0.013 min  
 Response: 978912  
 Conc: 8.06 ng/ml



#22 AR-1248-2

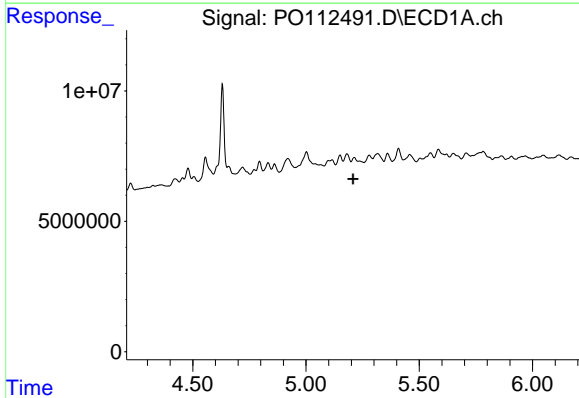
R.T.: 5.002 min  
 Delta R.T.: 0.008 min  
 Response: 6673402  
 Conc: 26.16 ng/ml

Instrument :  
 ECD\_O  
 ClientSampleId :  
 COMP-2



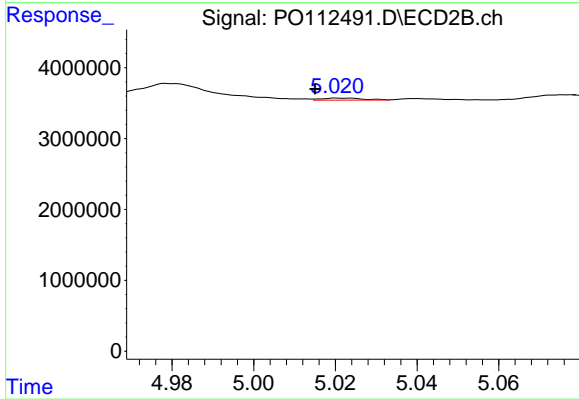
#22 AR-1248-2

R.T.: 4.980 min  
 Delta R.T.: 0.006 min  
 Response: 3757200  
 Conc: 22.20 ng/ml



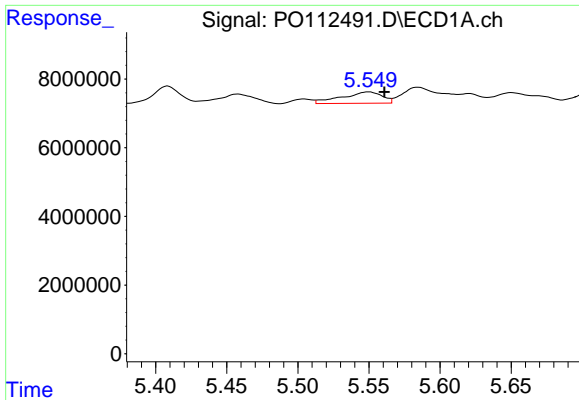
#23 AR-1248-3

R.T.: 5.213 min  
 Delta R.T.: 0.006 min  
 Response: -771343  
 Conc: N.D.



#23 AR-1248-3

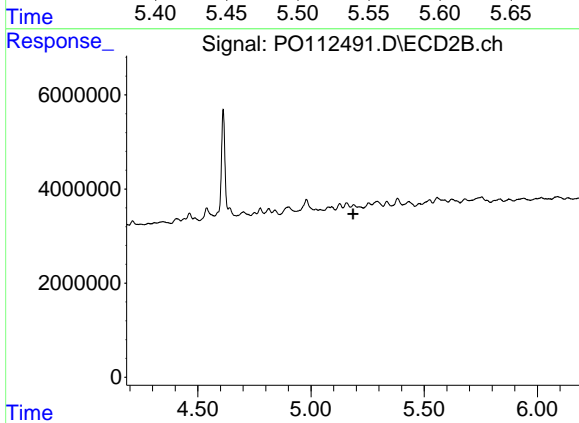
R.T.: 5.021 min  
 Delta R.T.: 0.006 min  
 Response: 215826  
 Conc: 1.21 ng/ml



#24 AR-1248-4

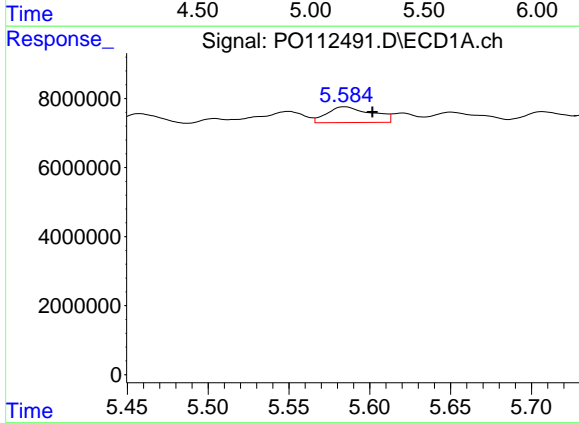
R.T.: 5.550 min  
 Delta R.T.: -0.011 min  
 Response: 6538636  
 Conc: 12.87 ng/ml

Instrument :  
 ECD\_O  
 ClientSampleId :  
 COMP-2



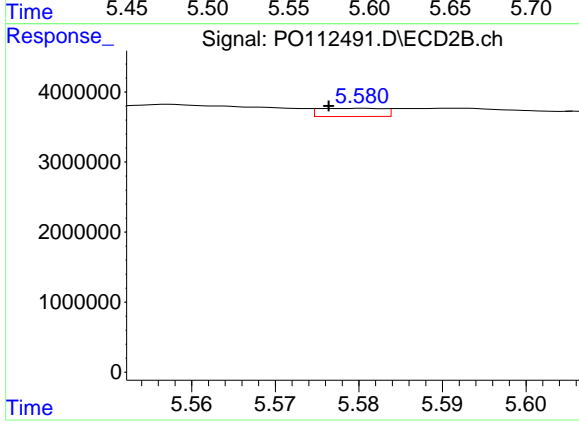
#24 AR-1248-4

R.T.: 5.188 min  
 Delta R.T.: 0.002 min  
 Response: -84424  
 Conc: N.D.



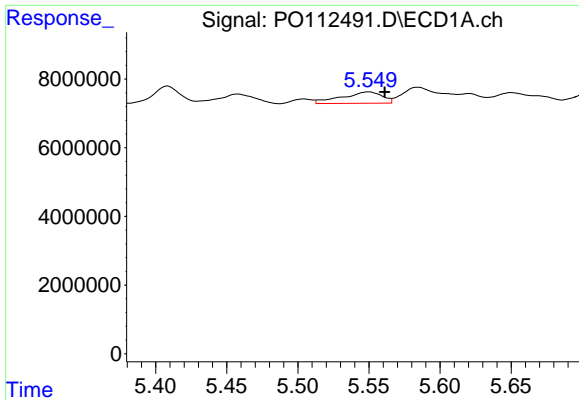
#25 AR-1248-5

R.T.: 5.585 min  
 Delta R.T.: -0.017 min  
 Response: 8772089  
 Conc: 25.09 ng/ml



#25 AR-1248-5

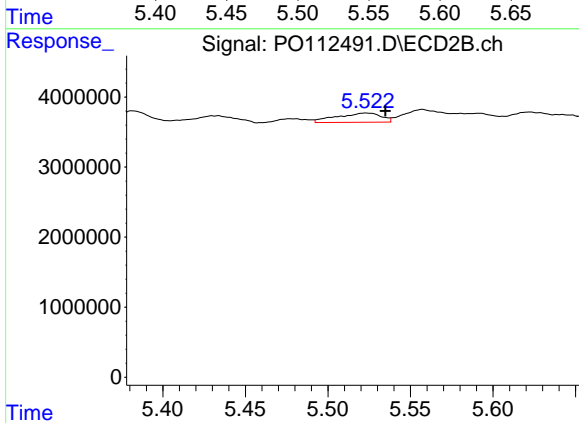
R.T.: 5.580 min  
 Delta R.T.: 0.004 min  
 Response: 630751  
 Conc: 2.94 ng/ml



#26 AR-1254-1

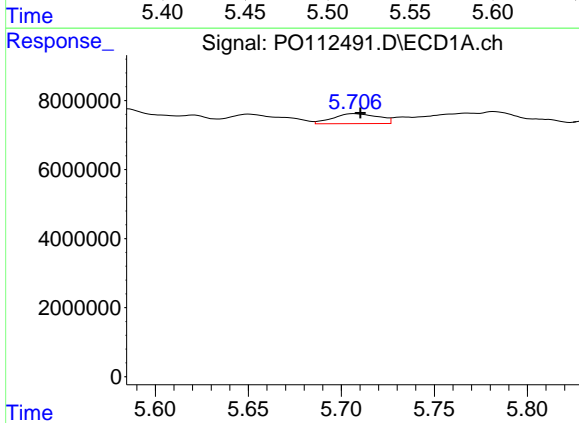
R.T.: 5.550 min  
 Delta R.T.: -0.011 min  
 Response: 6538636  
 Conc: 11.91 ng/ml

Instrument :  
 ECD\_O  
 ClientSampleId :  
 COMP-2



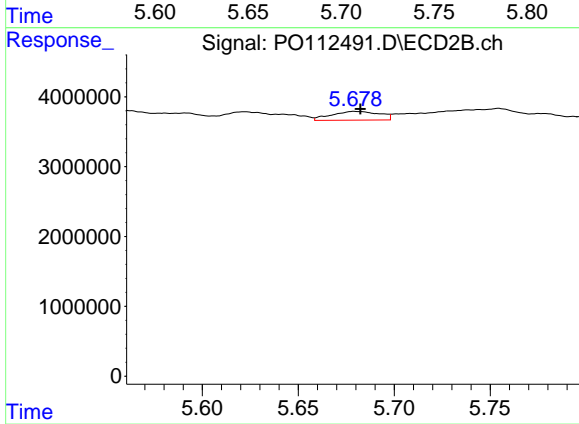
#26 AR-1254-1

R.T.: 5.523 min  
 Delta R.T.: -0.012 min  
 Response: 2469132  
 Conc: 7.51 ng/ml



#27 AR-1254-2

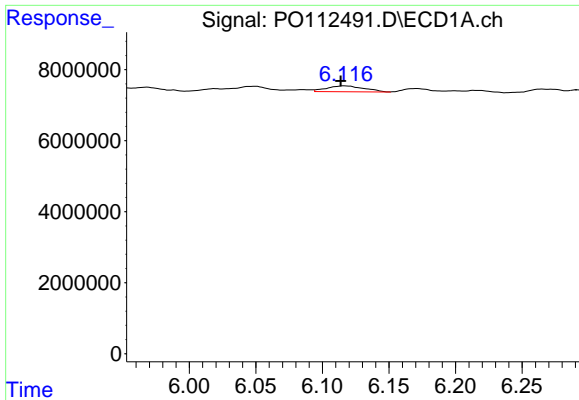
R.T.: 5.707 min  
 Delta R.T.: -0.003 min  
 Response: 4891919  
 Conc: 10.07 ng/ml



#27 AR-1254-2

R.T.: 5.679 min  
 Delta R.T.: -0.003 min  
 Response: 2164602  
 Conc: 7.48 ng/ml

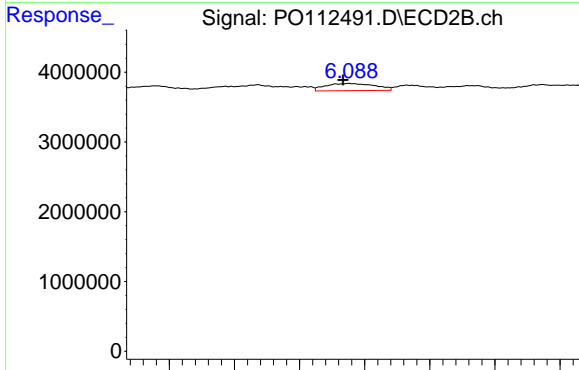




#28 AR-1254-3

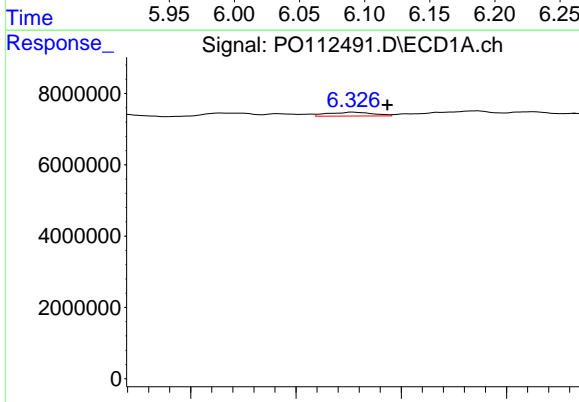
R.T.: 6.117 min  
 Delta R.T.: 0.003 min  
 Response: 3306917  
 Conc: 4.44 ng/ml

Instrument :  
 ECD\_O  
 ClientSampleId :  
 COMP-2



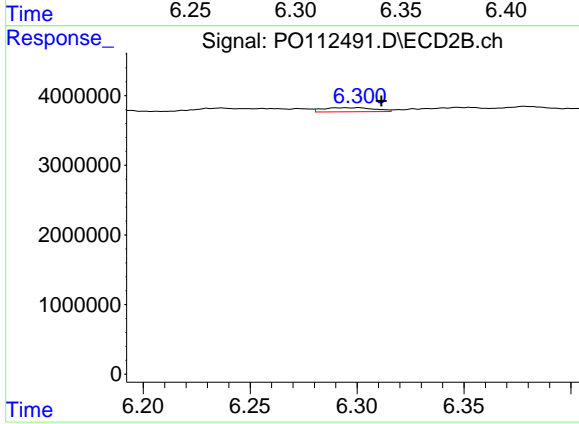
#28 AR-1254-3

R.T.: 6.088 min  
 Delta R.T.: 0.005 min  
 Response: 2736511  
 Conc: 6.40 ng/ml



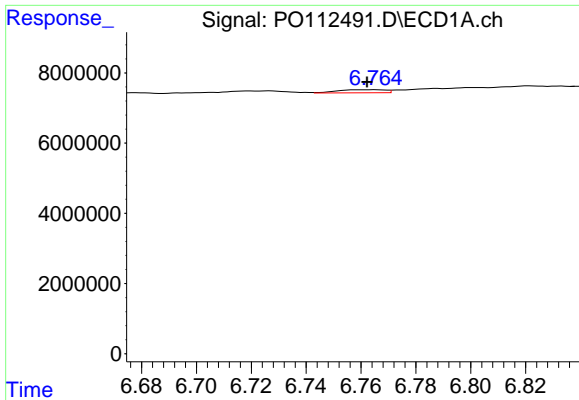
#29 AR-1254-4

R.T.: 6.327 min  
 Delta R.T.: -0.016 min  
 Response: 1597412  
 Conc: 2.91 ng/ml



#29 AR-1254-4

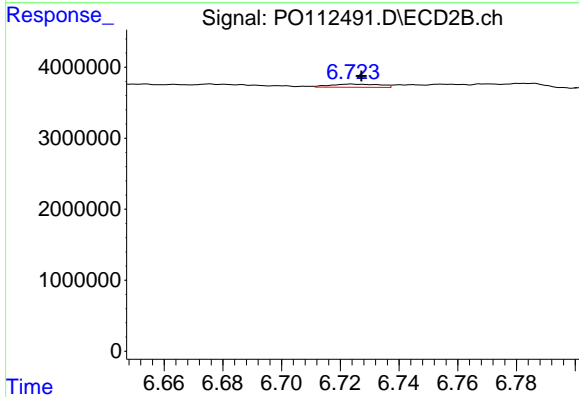
R.T.: 6.301 min  
 Delta R.T.: -0.011 min  
 Response: 973126  
 Conc: 3.57 ng/ml



#30 AR-1254-5

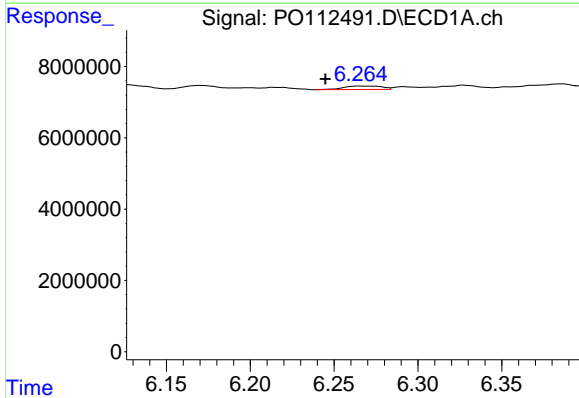
R.T.: 6.765 min  
 Delta R.T.: 0.002 min  
 Response: 1099044  
 Conc: 1.55 ng/ml

Instrument :  
 ECD\_O  
 ClientSampleId :  
 COMP-2



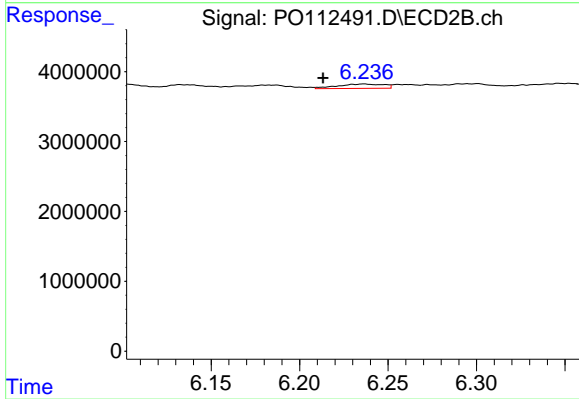
#30 AR-1254-5

R.T.: 6.724 min  
 Delta R.T.: -0.003 min  
 Response: 535557  
 Conc: 1.60 ng/ml



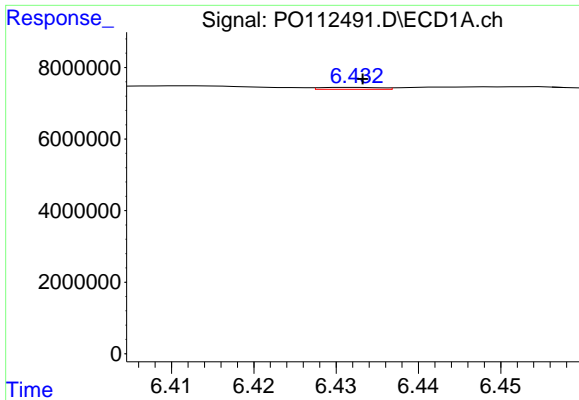
#31 AR-1260-1

R.T.: 6.265 min  
 Delta R.T.: 0.020 min  
 Response: 1530286  
 Conc: 3.48 ng/ml



#31 AR-1260-1

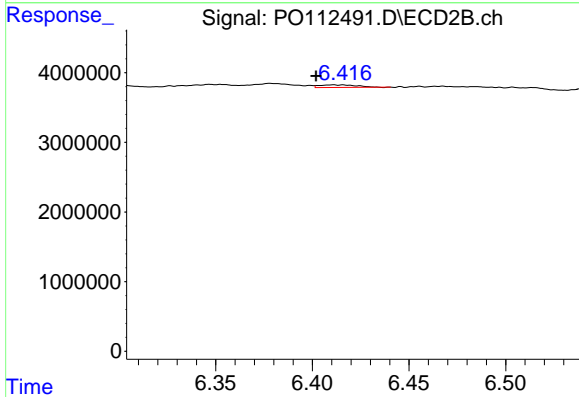
R.T.: 6.236 min  
 Delta R.T.: 0.023 min  
 Response: 1165596  
 Conc: 4.69 ng/ml



#32 AR-1260-2

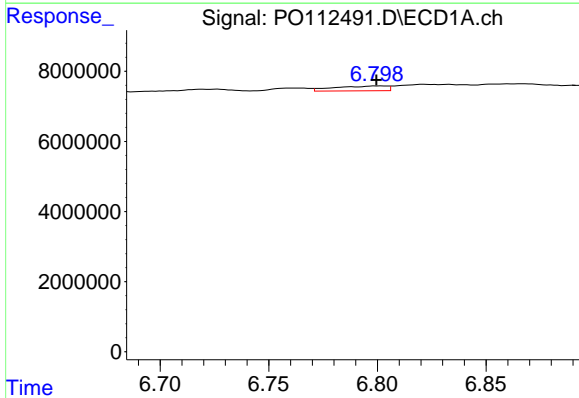
R.T.: 6.432 min  
 Delta R.T.: -0.001 min  
 Response: 273347  
 Conc: 0.40 ng/ml

Instrument :  
 ECD\_O  
 ClientSampleId :  
 COMP-2



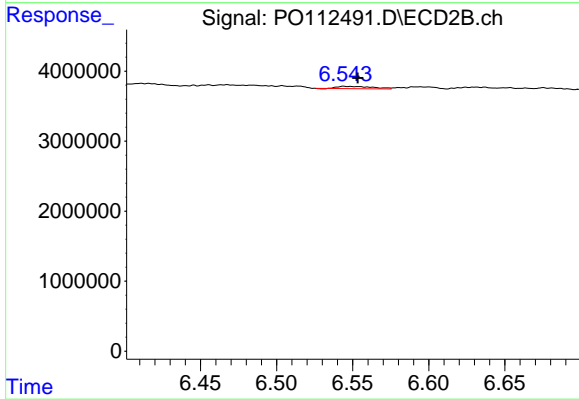
#32 AR-1260-2

R.T.: 6.411 min  
 Delta R.T.: 0.009 min  
 Response: 502337  
 Conc: 1.52 ng/ml



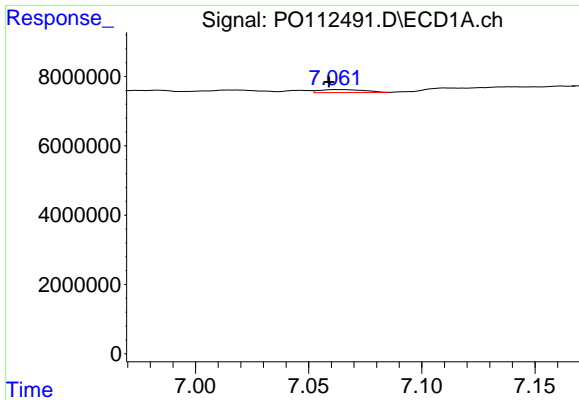
#33 AR-1260-3

R.T.: 6.801 min  
 Delta R.T.: 0.001 min  
 Response: 2317427  
 Conc: 3.94 ng/ml



#33 AR-1260-3

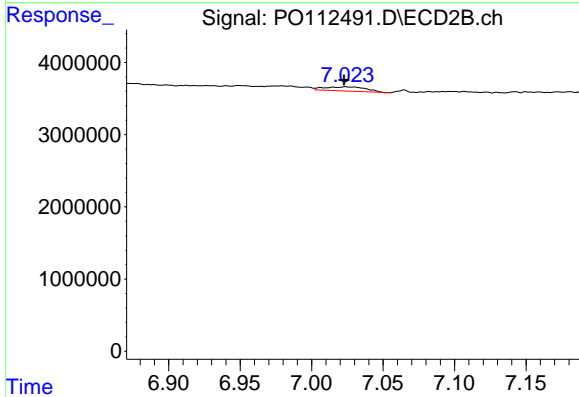
R.T.: 6.544 min  
 Delta R.T.: -0.009 min  
 Response: 500754  
 Conc: 1.95 ng/ml



#34 AR-1260-4

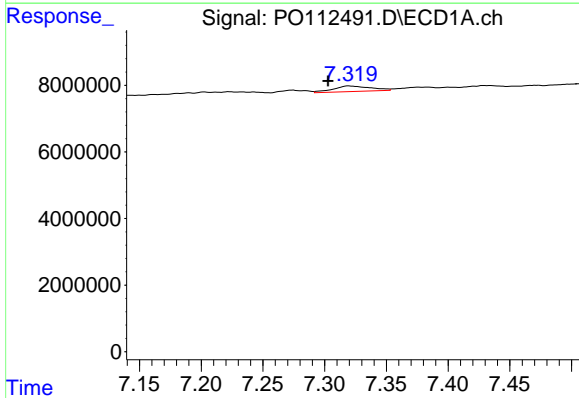
R.T.: 7.061 min  
 Delta R.T.: 0.003 min  
 Response: 1172143  
 Conc: 2.60 ng/ml

Instrument :  
 ECD\_O  
 ClientSampleId :  
 COMP-2



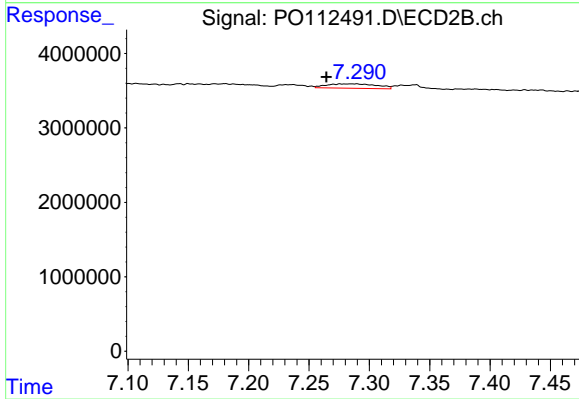
#34 AR-1260-4

R.T.: 7.024 min  
 Delta R.T.: 0.001 min  
 Response: 1135150  
 Conc: 5.93 ng/ml



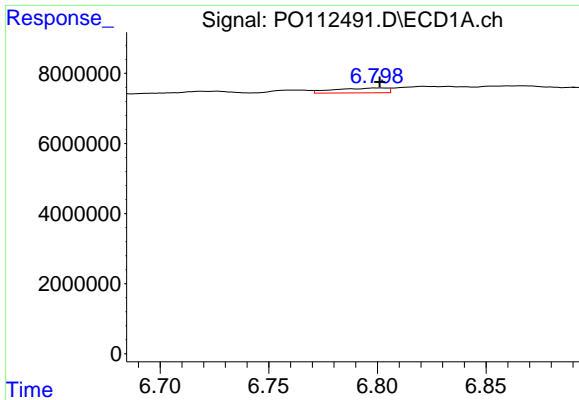
#35 AR-1260-5

R.T.: 7.320 min  
 Delta R.T.: 0.017 min  
 Response: 3568311  
 Conc: 2.88 ng/ml



#35 AR-1260-5

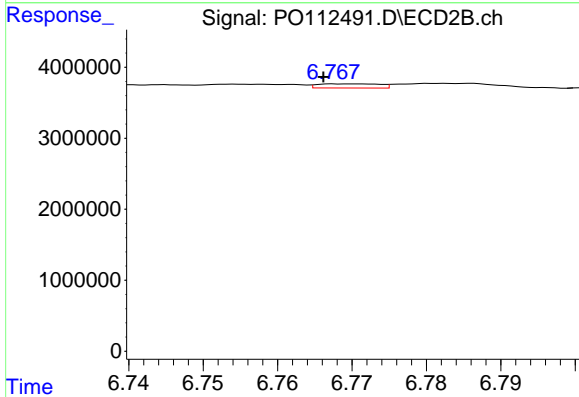
R.T.: 7.289 min  
 Delta R.T.: 0.025 min  
 Response: 1717212  
 Conc: 4.17 ng/ml



#36 AR-1262-1

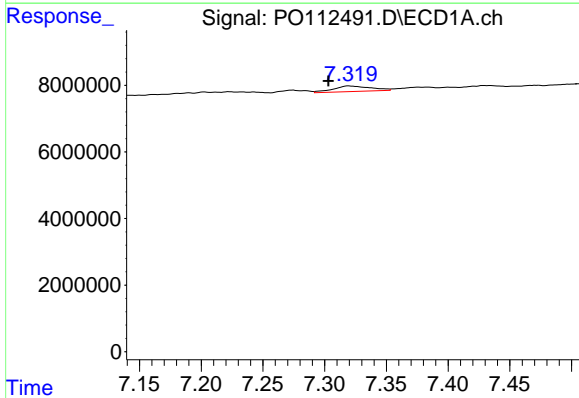
R.T.: 6.801 min  
 Delta R.T.: 0.000 min  
 Response: 2317427  
 Conc: 2.49 ng/ml

Instrument :  
 ECD\_O  
 ClientSampleId :  
 COMP-2



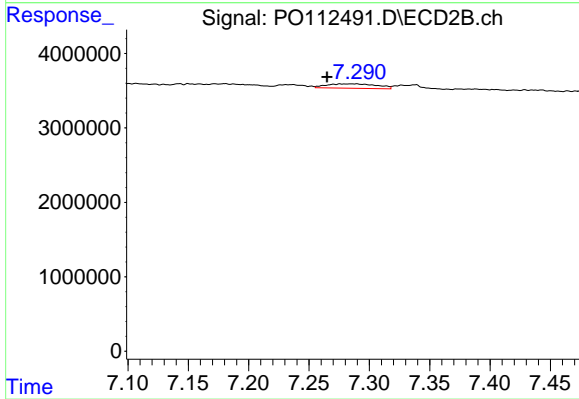
#36 AR-1262-1

R.T.: 6.770 min  
 Delta R.T.: 0.004 min  
 Response: 331744  
 Conc: 0.80 ng/ml



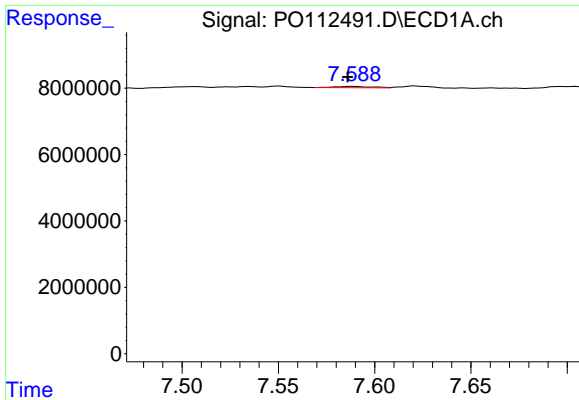
#37 AR-1262-2

R.T.: 7.320 min  
 Delta R.T.: 0.016 min  
 Response: 3568311  
 Conc: 2.40 ng/ml



#37 AR-1262-2

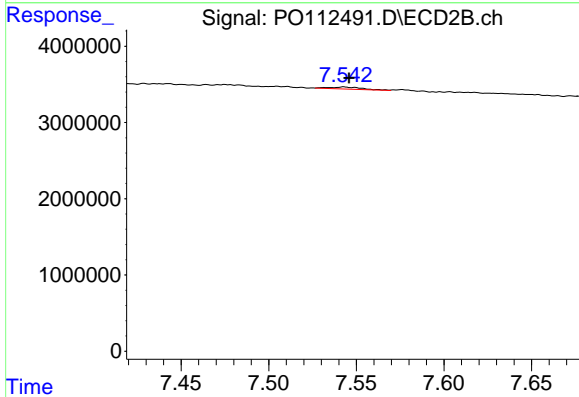
R.T.: 7.289 min  
 Delta R.T.: 0.024 min  
 Response: 1717212  
 Conc: 3.33 ng/ml



#38 AR-1262-3

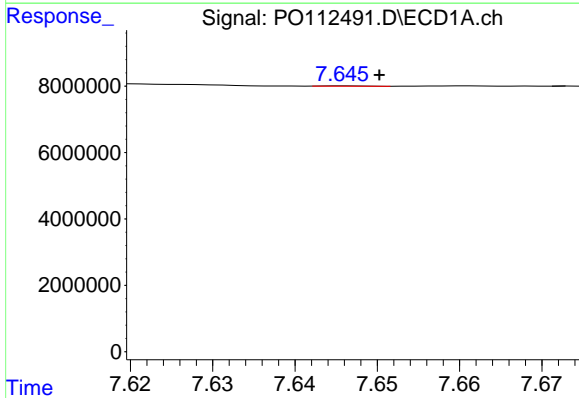
R.T.: 7.589 min  
 Delta R.T.: 0.003 min  
 Response: 533357  
 Conc: 0.90 ng/ml

Instrument :  
 ECD\_O  
 ClientSampleId :  
 COMP-2



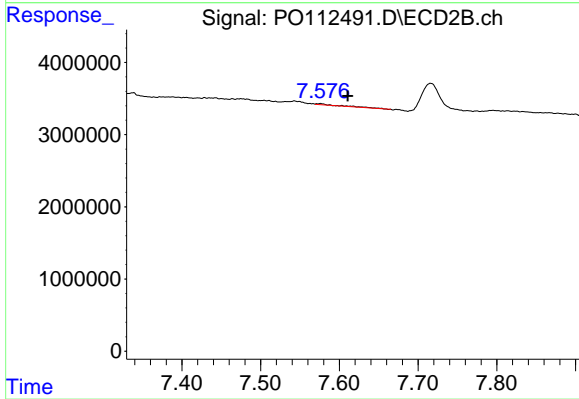
#38 AR-1262-3

R.T.: 7.543 min  
 Delta R.T.: -0.003 min  
 Response: 354945  
 Conc: 1.90 ng/ml



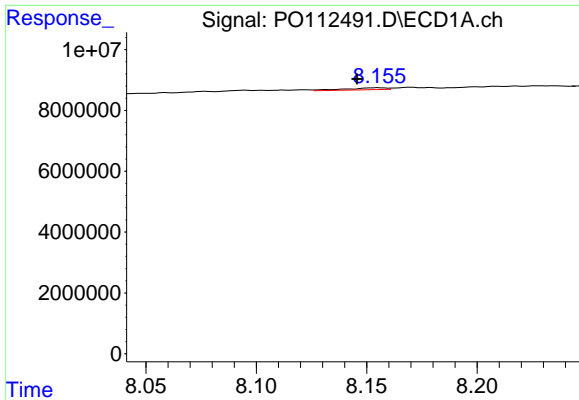
#39 AR-1262-4

R.T.: 7.646 min  
 Delta R.T.: -0.004 min  
 Response: 30761  
 Conc: 0.03 ng/ml



#39 AR-1262-4

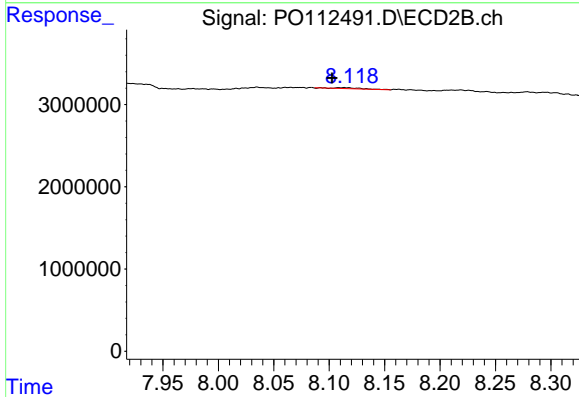
R.T.: 7.576 min  
 Delta R.T.: -0.034 min  
 Response: 222653  
 Conc: 0.77 ng/ml



#40 AR-1262-5

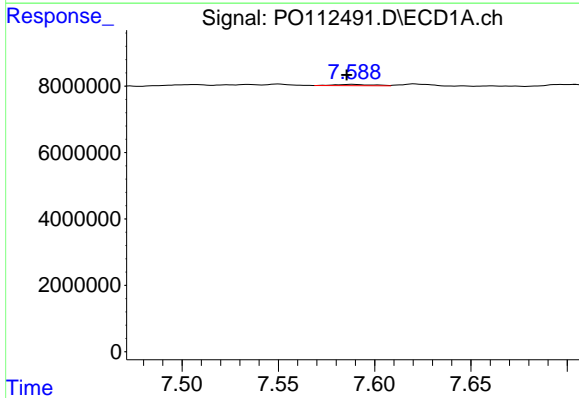
R.T.: 8.155 min  
 Delta R.T.: 0.010 min  
 Response: 842799  
 Conc: 1.94 ng/ml

Instrument :  
 ECD\_O  
 ClientSampleId :  
 COMP-2



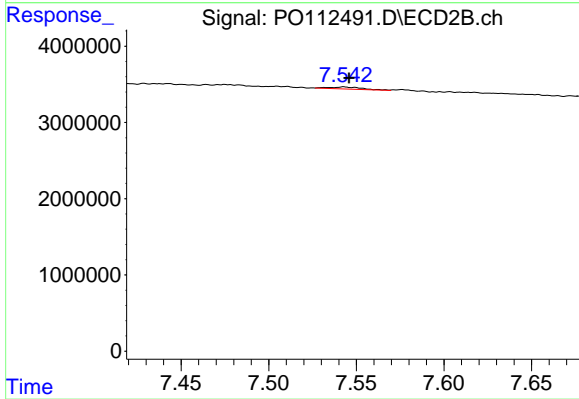
#40 AR-1262-5

R.T.: 8.114 min  
 Delta R.T.: 0.011 min  
 Response: 192898  
 Conc: 1.94 ng/ml



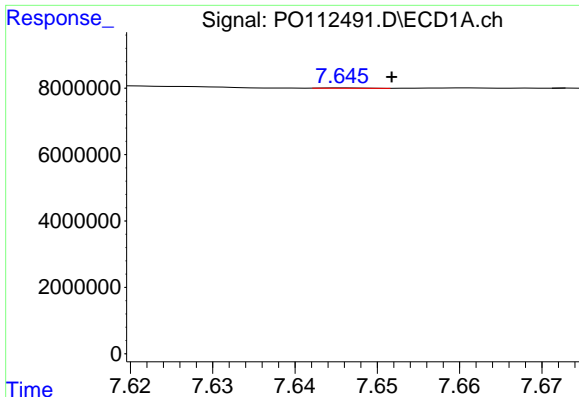
#41 AR-1268-1

R.T.: 7.589 min  
 Delta R.T.: 0.003 min  
 Response: 533357  
 Conc: 0.30 ng/ml



#41 AR-1268-1

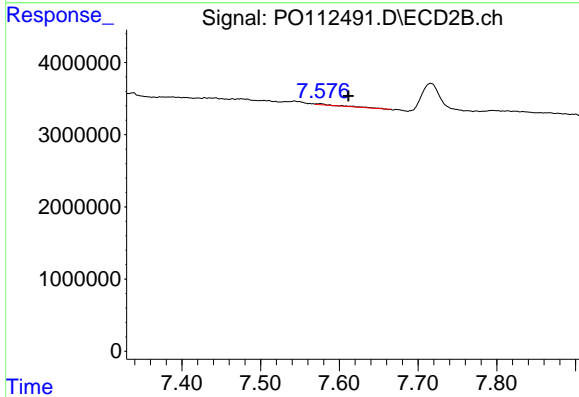
R.T.: 7.543 min  
 Delta R.T.: -0.003 min  
 Response: 354945  
 Conc: 0.69 ng/ml



#42 AR-1268-2

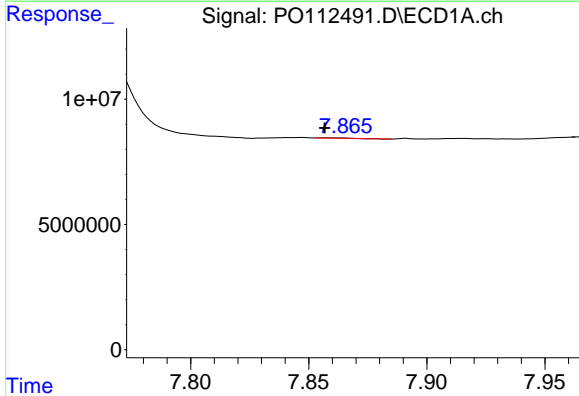
R.T.: 7.646 min  
 Delta R.T.: -0.006 min  
 Response: 30761  
 Conc: 0.02 ng/ml

Instrument :  
 ECD\_O  
 ClientSampleId :  
 COMP-2



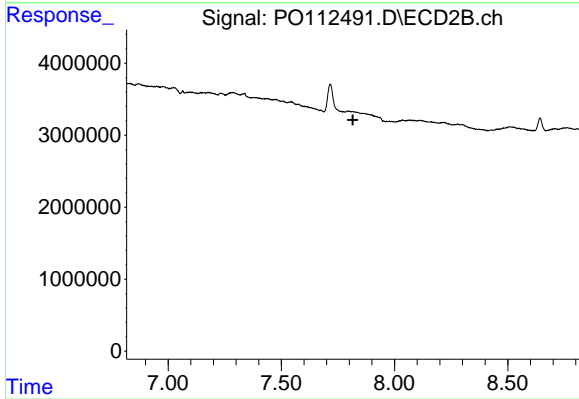
#42 AR-1268-2

R.T.: 7.576 min  
 Delta R.T.: -0.035 min  
 Response: 222653  
 Conc: 0.52 ng/ml



#43 AR-1268-3

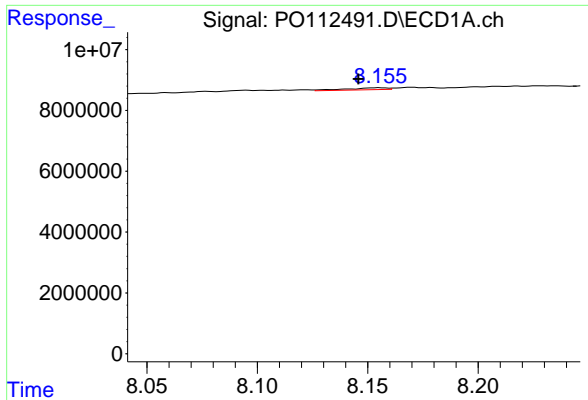
R.T.: 7.857 min  
 Delta R.T.: 0.000 min  
 Response: 134283  
 Conc: 0.11 ng/ml



#43 AR-1268-3

R.T.: 0.000 min  
 Exp R.T. : 7.816 min  
 Response: 0  
 Conc: N.D.

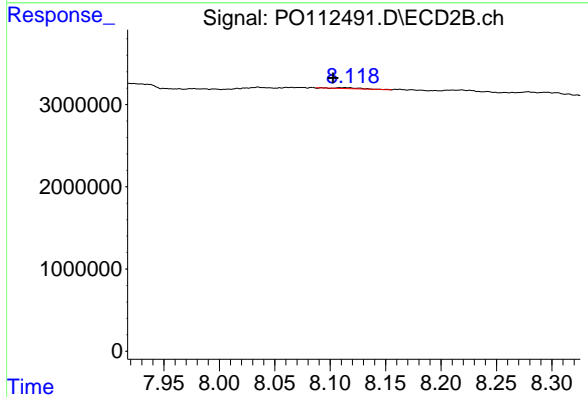




#44 AR-1268-4

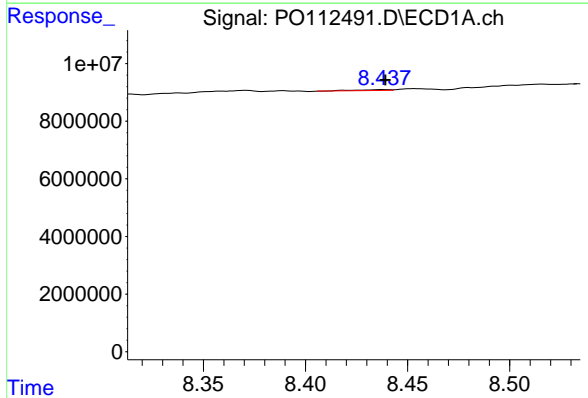
R.T.: 8.155 min  
 Delta R.T.: 0.009 min  
 Response: 842799  
 Conc: 1.75 ng/ml

Instrument :  
 ECD\_O  
 ClientSampleId :  
 COMP-2



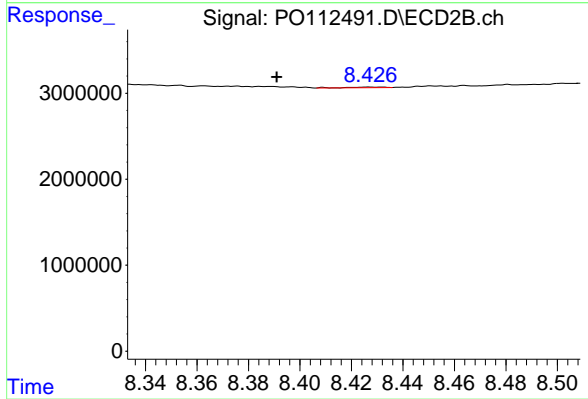
#44 AR-1268-4

R.T.: 8.114 min  
 Delta R.T.: 0.011 min  
 Response: 192898  
 Conc: 1.73 ng/ml



#45 AR-1268-5

R.T.: 8.438 min  
 Delta R.T.: -0.002 min  
 Response: 395840  
 Conc: 0.12 ng/ml



#45 AR-1268-5

R.T.: 8.427 min  
 Delta R.T.: 0.036 min  
 Response: 72583  
 Conc: 0.10 ng/ml