

Data Path : Z:\pestpcbsrv\HPCHEM1\ECD\_0\Data\P0072425\  
 Data File : PO112492.D  
 Signal(s) : Signal #1: ECD1A.ch Signal #2: ECD2B.ch  
 Acq On : 25 Jul 2025 04:23  
 Operator : YP/AJ  
 Sample : Q2685-03 10X  
 Misc :  
 ALS Vial : 35 Sample Multiplier: 1

Instrument :  
 ECD\_0  
 ClientSampleId :  
 COMP-3

Integration File signal 1: autoint1.e  
 Integration File signal 2: autoint2.e  
 Quant Time: Jul 25 06:28:35 2025  
 Quant Method : Z:\pestpcbsrv\HPCHEM1\ECD\_0\methods\P0072325.M  
 Quant Title : GC EXTRACTABLES  
 QLast Update : Thu Jul 24 04:54:06 2025  
 Response via : Initial Calibration  
 Integrator: ChemStation

Volume Inj. : 2 µl  
 Signal #1 Phase : ZB-MR2 Signal #2 Phase: ZB-MR2  
 Signal #1 Info : 30Mx0.32mmx 0.50µ Signal #2 Info : 30M x 0.32mm x 0.25µm

Compound	RT#1	RT#2	Resp#1	Resp#2	ng/ml	ng/ml
System Monitoring Compounds						
1) SA Tetrachlo...	3.672	3.663	8500968	6678753	1.045	1.344 #
2) SA Decachlor...	8.696	8.641	8197218	2603935	1.121	1.474 #
Target Compounds						
3) L1 AR-1016-1	4.762	4.743	-287488	528498	N.D.	3.020 #
4) L1 AR-1016-2	4.762	4.743	-287488	528498	N.D.	2.029 #
5) L1 AR-1016-3	4.808	4.933	1445509	422344	5.524	3.106 #
6) L1 AR-1016-4	4.961	4.987	2021299	1834375	9.542	16.513 #
7) L1 AR-1016-5	5.208	5.179	1004935	116085	4.579	0.810 #
8) L2 AR-1221-1	3.890	3.879	47875	236610	0.495	3.518 #
9) L2 AR-1221-2	3.987	3.971	-3044169	2449034	N.D.	48.278 #
10) L2 AR-1221-3	4.024	4.048	1373439	3091042	5.778	19.498 #
11) L3 AR-1232-1	4.024	4.048	1373439	3091042	7.345	24.425 #
12) L3 AR-1232-2	4.507	4.743	5769087	528498	53.604	4.030 #
13) L3 AR-1232-3	4.762	4.933	-287488	422344	N.D.	6.285 #
14) L3 AR-1232-4	4.961	5.011	2021299	353667	19.298	5.911 #
15) L3 AR-1232-5	5.010	5.179	5247398	116085	77.303	1.780 #
16) L4 AR-1242-1	4.762	4.743	-287488	528498	N.D.	3.337 #
17) L4 AR-1242-2	4.762	4.743	-287488	528498	N.D.	2.262 #
18) L4 AR-1242-3	4.808	4.933	1445509	422344	6.108	3.485 #
19) L4 AR-1242-4	4.961	5.011	2021299	353667	10.404	2.881 #
20) L4 AR-1242-5	5.599	5.523	15143943	727408	70.794	4.519 #
21) L5 AR-1248-1	4.762	4.743	-287488	528498	N.D.	4.349 #
22) L5 AR-1248-2	5.010	4.987	5247398	1834375	20.569	10.836 #
23) L5 AR-1248-3	5.208	5.011	1004935	353667	2.924	1.991 #
24) L5 AR-1248-4	5.546	5.179	2371846	116085	4.668	0.557 #
25) L5 AR-1248-5	5.599	5.567	15143943	9567555	43.319	44.549
26) L6 AR-1254-1	5.546	5.523	2371846	727408	4.321	2.214 #
27) L6 AR-1254-2	5.718	5.692	1616897	1094246	3.328	3.780
28) L6 AR-1254-3	6.121	6.089	1993868	2684080	2.679	6.279 #
29) L6 AR-1254-4	6.376	6.299	2530274	201867	4.603	0.740 #
30) L6 AR-1254-5	6.766	6.727	11926186	407390	16.849	1.220 #
31) L7 AR-1260-1	6.281f	6.202	1446166	1161913	3.292	4.675 #
32) L7 AR-1260-2	6.449	6.418	439038	289417	0.638	0.878 #
33) L7 AR-1260-3	6.766	6.564	11926186	154626	20.282	0.602 #
34) L7 AR-1260-4	7.039	7.033	1760923	255766	3.904	1.337 #
35) L7 AR-1260-5	7.351f	7.265	8484389	162935	6.847	0.395 #
36) L8 AR-1262-1	6.766	6.775	11926186	89719	12.835	0.216 #
37) L8 AR-1262-2	7.351f	7.265	8484389	162935	5.706	0.316 #
38) L8 AR-1262-3	7.603	7.561	570778	2976935	0.967	15.960 #
39) L8 AR-1262-4	7.636	7.638	499679	237275	0.503	0.824 #
40) L8 AR-1262-5	8.142	8.110	9159892	46984	21.103	0.472 #
41) L9 AR-1268-1	7.603	7.561	570778	2976935	0.326	5.749 #

Data Path : Z:\pestpcbsrv\HPCHEM1\ECD\_0\Data\P0072425\  
 Data File : P0112492.D  
 Signal(s) : Signal #1: ECD1A.ch Signal #2: ECD2B.ch  
 Acq On : 25 Jul 2025 04:23  
 Operator : YP/AJ  
 Sample : Q2685-03 10X  
 Misc :  
 ALS Vial : 35 Sample Multiplier: 1

Instrument :  
 ECD\_0  
 ClientSampleId :  
 COMP-3

Integration File signal 1: autoint1.e  
 Integration File signal 2: autoint2.e  
 Quant Time: Jul 25 06:28:35 2025  
 Quant Method : Z:\pestpcbsrv\HPCHEM1\ECD\_0\methods\P0072325.M  
 Quant Title : GC EXTRACTABLES  
 QLast Update : Thu Jul 24 04:54:06 2025  
 Response via : Initial Calibration  
 Integrator: ChemStation

Volume Inj. : 2 µl  
 Signal #1 Phase : ZB-MR1 Signal #2 Phase: ZB-MR2  
 Signal #1 Info : 30Mx0.32mmx 0.50µ Signal #2 Info : 30M x 0.32mm x 0.25µm

	Compound	RT#1	RT#2	Resp#1	Resp#2	ng/ml	ng/ml
42)	L9 AR-1268-2	7.636	7.638	499679	237275	0.339	0.558 #
43)	L9 AR-1268-3	7.869	0.000	856898	0	0.684	N.D. #
44)	L9 AR-1268-4	8.142	8.110	9159892	46984	19.009	0.422 #
45)	L9 AR-1268-5	8.454	8.398	663021	92805	0.197	0.127 #

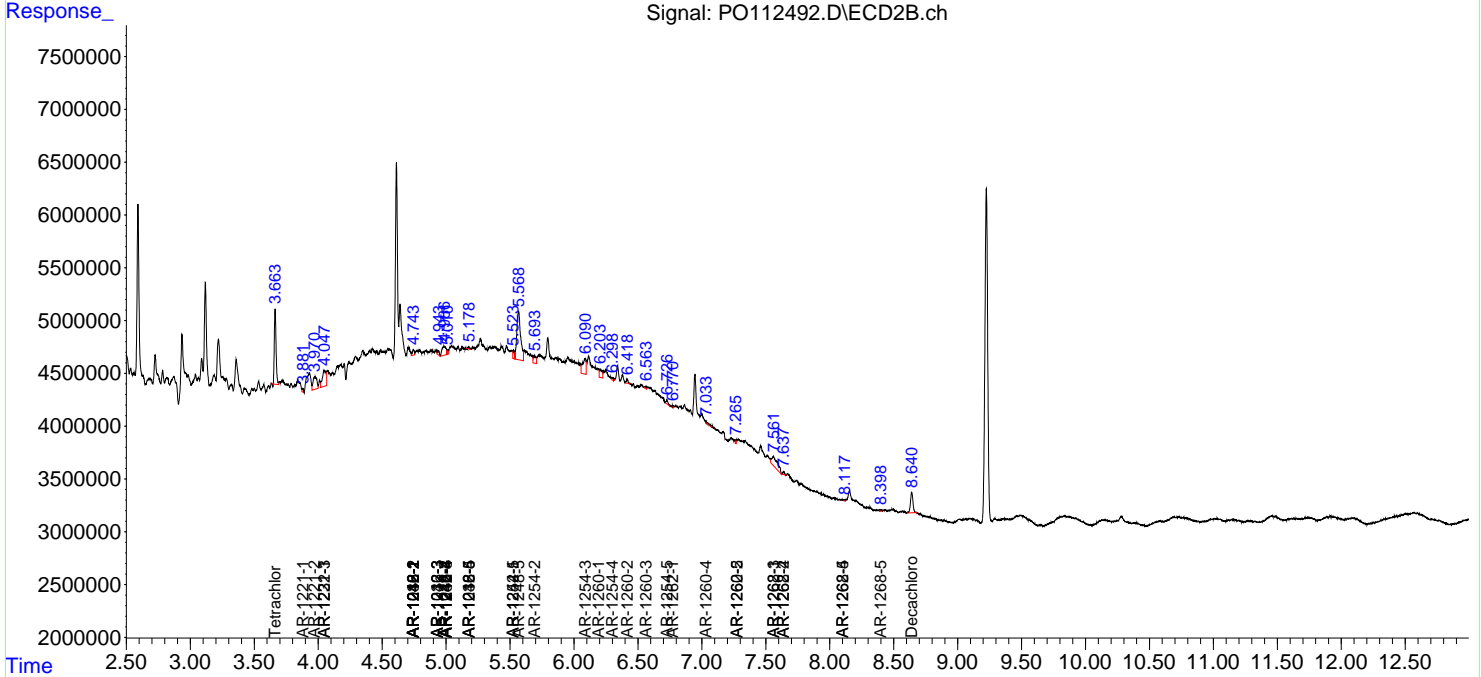
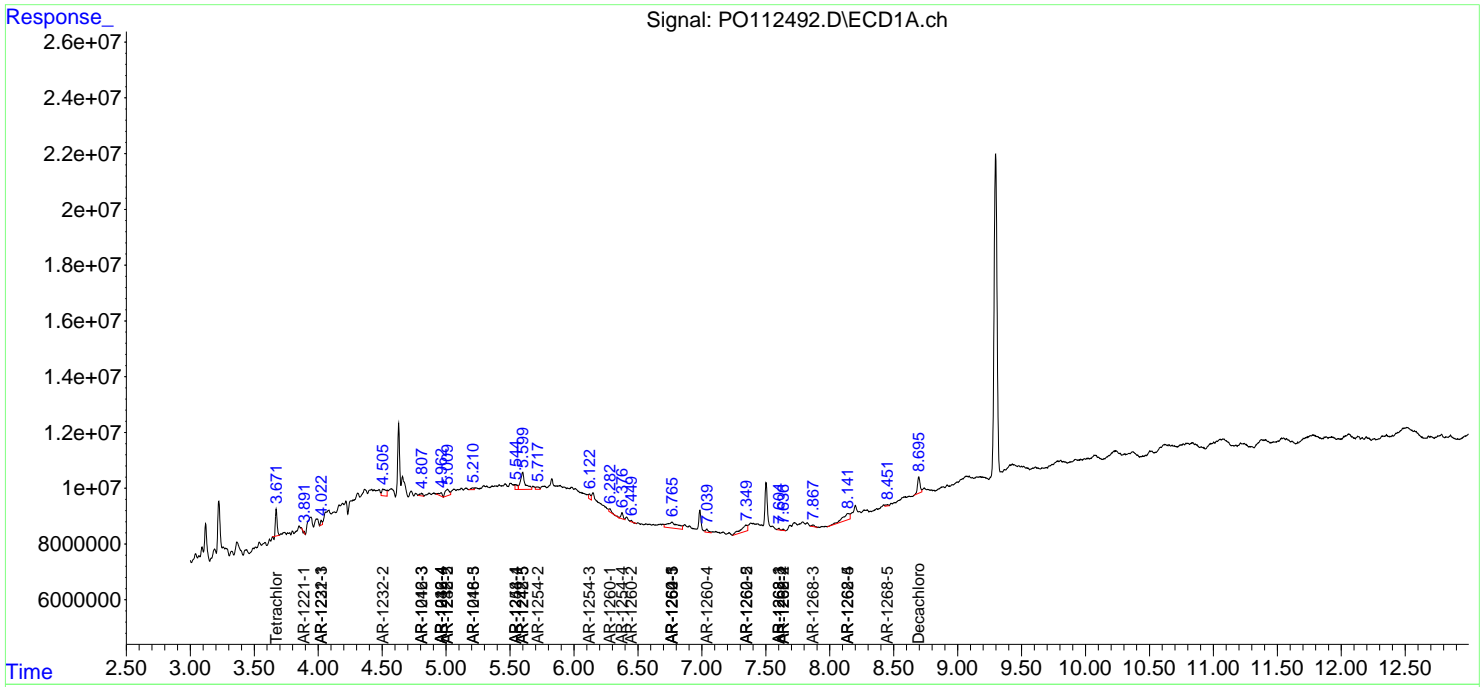
(f)=RT Delta > 1/2 Window (#)=Amounts differ by > 25% (m)=manual int.

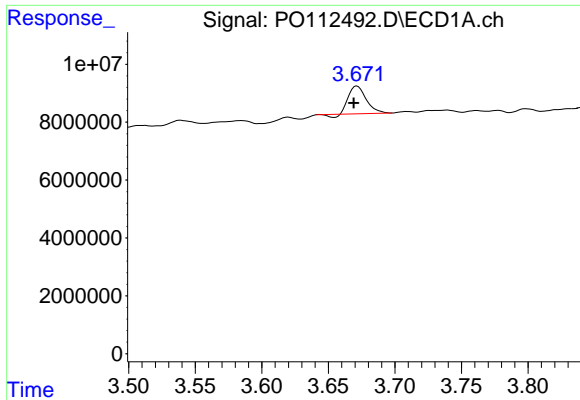
Data Path : Z:\pestpcbsrv\HPCHEM1\ECD\_O\Data\PO072425\  
 Data File : PO112492.D  
 Signal(s) : Signal #1: ECD1A.ch Signal #2: ECD2B.ch  
 Acq On : 25 Jul 2025 04:23  
 Operator : YP/AJ  
 Sample : Q2685-03 10X  
 Misc :  
 ALS Vial : 35 Sample Multiplier: 1

Instrument :  
 ECD\_O  
 ClientSampleId :  
 COMP-3

Integration File signal 1: autoint1.e  
 Integration File signal 2: autoint2.e  
 Quant Time: Jul 25 06:28:35 2025  
 Quant Method : Z:\pestpcbsrv\HPCHEM1\ECD\_O\methods\PO072325.M  
 Quant Title : GC EXTRACTABLES  
 QLast Update : Thu Jul 24 04:54:06 2025  
 Response via : Initial Calibration  
 Integrator: ChemStation

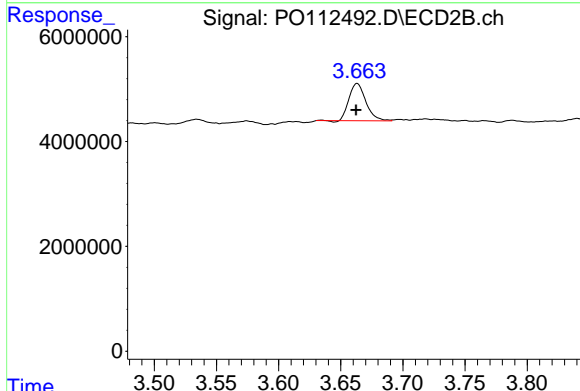
Volume Inj. : 2 µl  
 Signal #1 Phase : ZB-MR1 Signal #2 Phase: ZB-MR2  
 Signal #1 Info : 30Mx0.32mmx 0.50µ Signal #2 Info : 30M x 0.32mm x 0.25µm



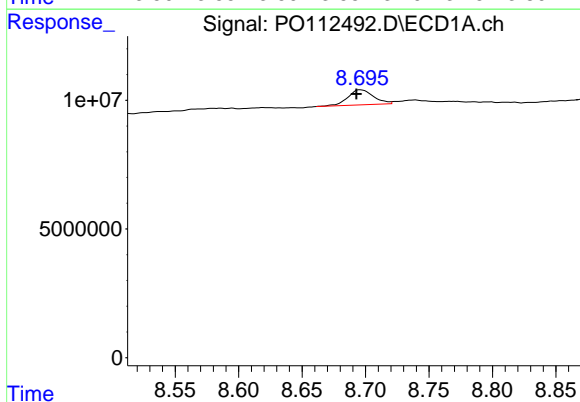


#1 Tetrachloro-m-xylene  
 R.T.: 3.672 min  
 Delta R.T.: 0.003 min  
 Response: 8500968  
 Conc: 1.05 ng/ml

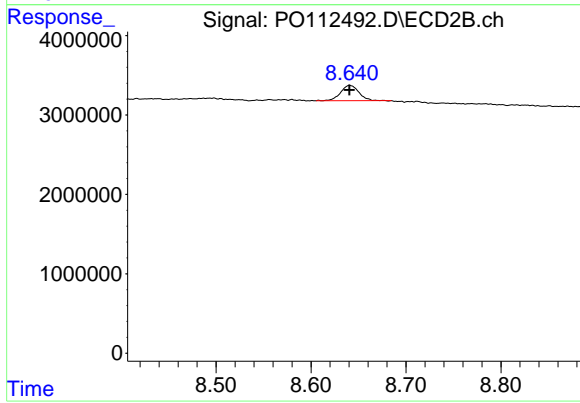
Instrument :  
 ECD\_O  
 ClientSampleId :  
 COMP-3



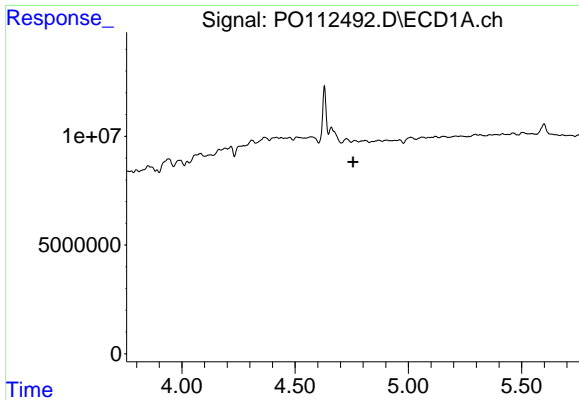
#1 Tetrachloro-m-xylene  
 R.T.: 3.663 min  
 Delta R.T.: 0.000 min  
 Response: 6678753  
 Conc: 1.34 ng/ml



#2 Decachlorobiphenyl  
 R.T.: 8.696 min  
 Delta R.T.: 0.004 min  
 Response: 8197218  
 Conc: 1.12 ng/ml



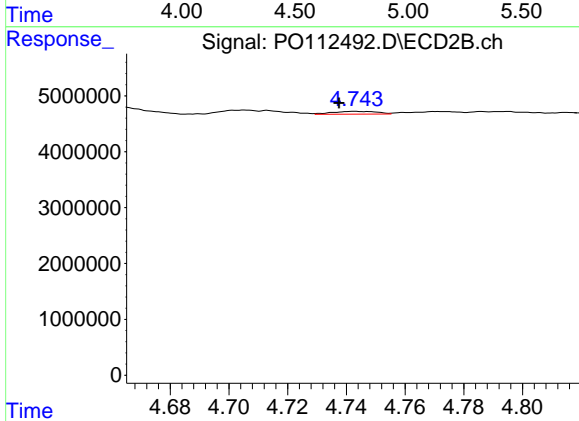
#2 Decachlorobiphenyl  
 R.T.: 8.641 min  
 Delta R.T.: 0.000 min  
 Response: 2603935  
 Conc: 1.47 ng/ml



#3 AR-1016-1

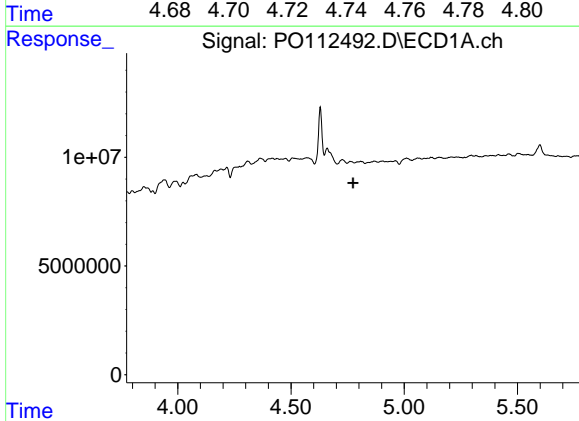
R.T.: 4.762 min  
 Delta R.T.: 0.006 min  
 Response: -287488  
 Conc: N.D.

Instrument :  
 ECD\_O  
 ClientSampleId :  
 COMP-3



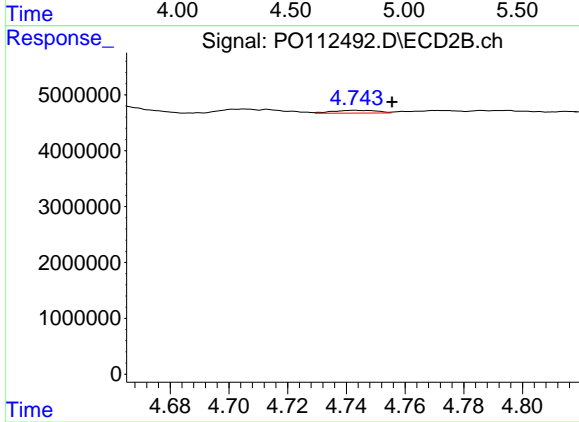
#3 AR-1016-1

R.T.: 4.743 min  
 Delta R.T.: 0.005 min  
 Response: 528498  
 Conc: 3.02 ng/ml



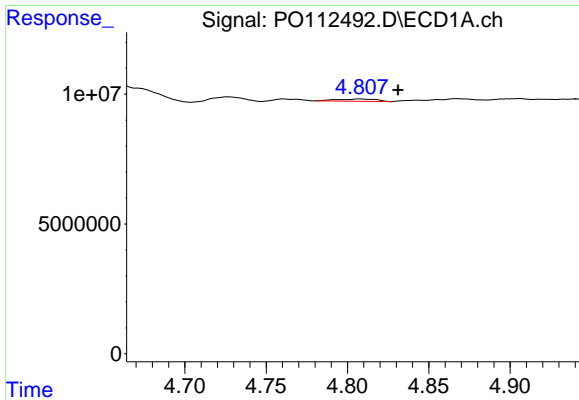
#4 AR-1016-2

R.T.: 4.762 min  
 Delta R.T.: -0.012 min  
 Response: -287488  
 Conc: N.D.



#4 AR-1016-2

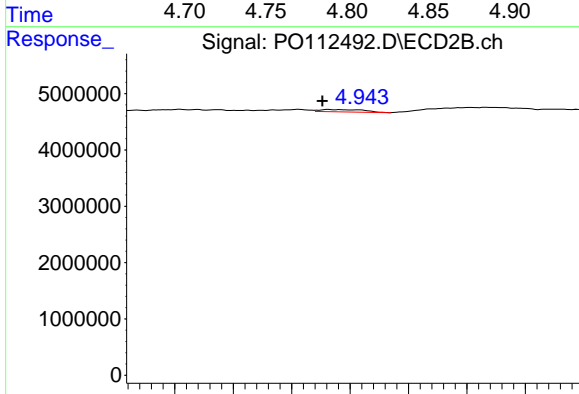
R.T.: 4.743 min  
 Delta R.T.: -0.013 min  
 Response: 528498  
 Conc: 2.03 ng/ml



#5 AR-1016-3

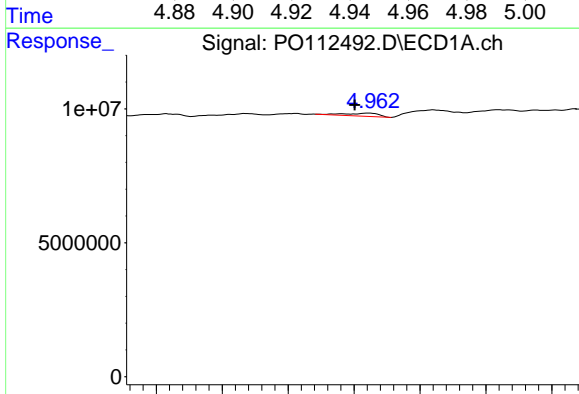
R.T.: 4.808 min  
 Delta R.T.: -0.023 min  
 Response: 1445509  
 Conc: 5.52 ng/ml

Instrument :  
 ECD\_O  
 ClientSampleId :  
 COMP-3



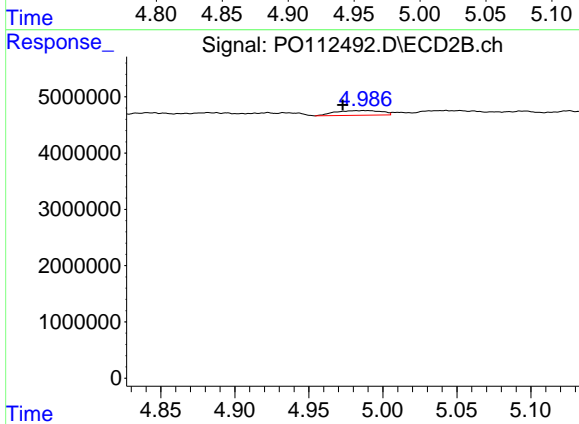
#5 AR-1016-3

R.T.: 4.933 min  
 Delta R.T.: 0.003 min  
 Response: 422344  
 Conc: 3.11 ng/ml



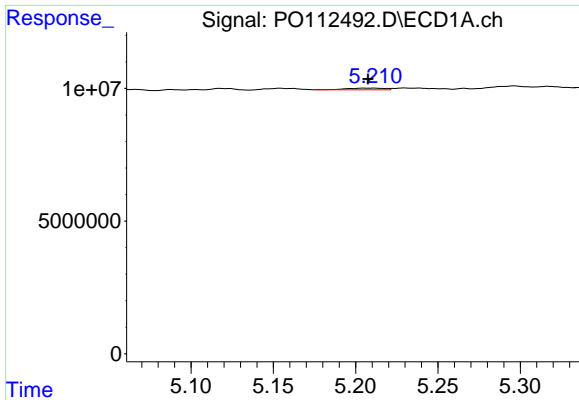
#6 AR-1016-4

R.T.: 4.961 min  
 Delta R.T.: 0.010 min  
 Response: 2021299  
 Conc: 9.54 ng/ml



#6 AR-1016-4

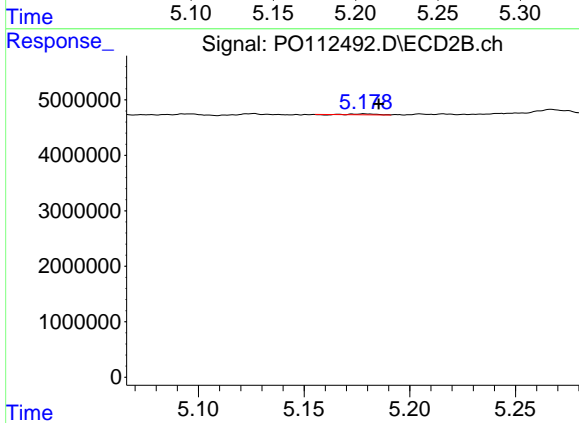
R.T.: 4.987 min  
 Delta R.T.: 0.015 min  
 Response: 1834375  
 Conc: 16.51 ng/ml



#7 AR-1016-5

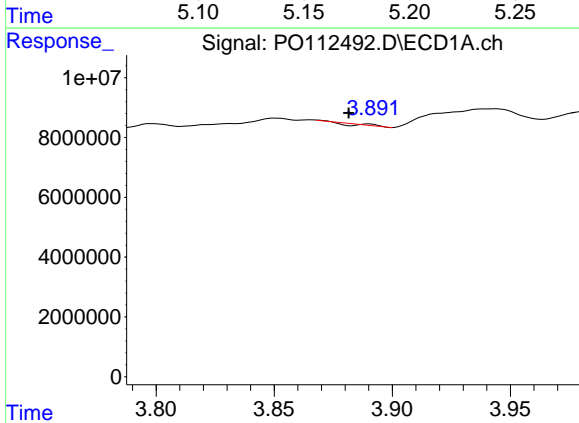
R.T.: 5.208 min  
 Delta R.T.: 0.000 min  
 Response: 1004935  
 Conc: 4.58 ng/ml

Instrument :  
 ECD\_O  
 ClientSampleId :  
 COMP-3



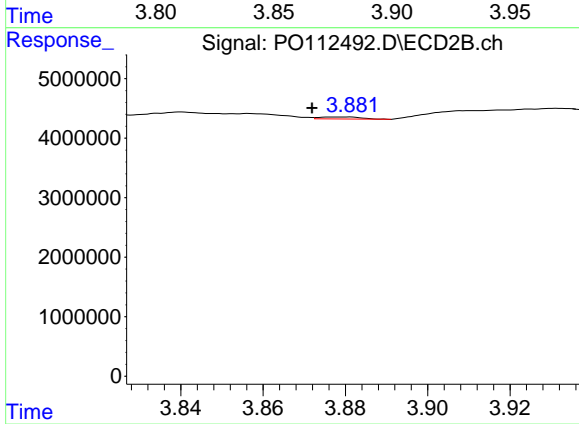
#7 AR-1016-5

R.T.: 5.179 min  
 Delta R.T.: -0.006 min  
 Response: 116085  
 Conc: 0.81 ng/ml



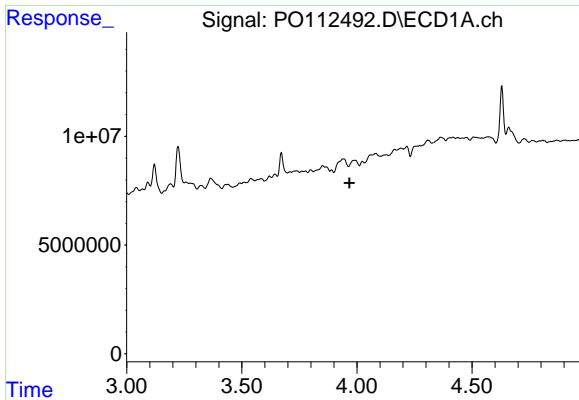
#8 AR-1221-1

R.T.: 3.890 min  
 Delta R.T.: 0.009 min  
 Response: 47875  
 Conc: 0.50 ng/ml



#8 AR-1221-1

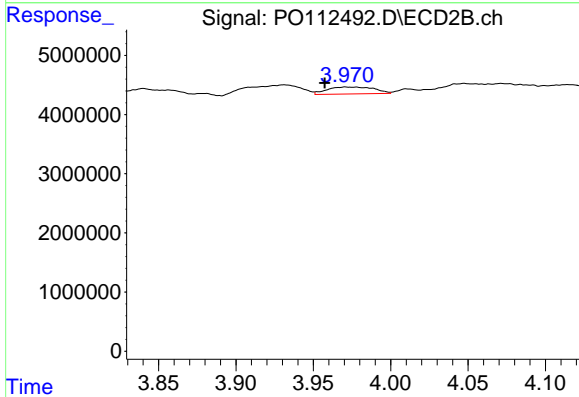
R.T.: 3.879 min  
 Delta R.T.: 0.007 min  
 Response: 236610  
 Conc: 3.52 ng/ml



#9 AR-1221-2

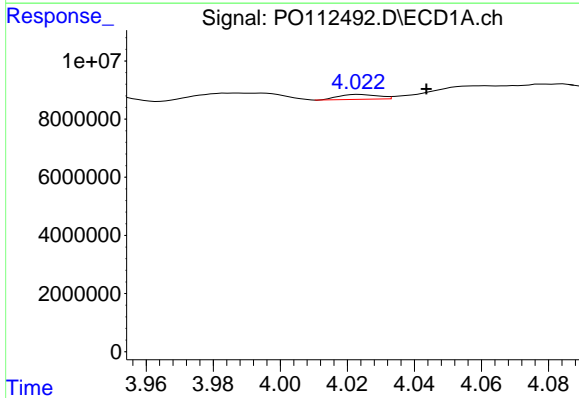
R.T.: 3.987 min  
 Delta R.T.: 0.019 min  
 Response: -3044169  
 Conc: N.D.

Instrument :  
 ECD\_O  
 ClientSampleId :  
 COMP-3



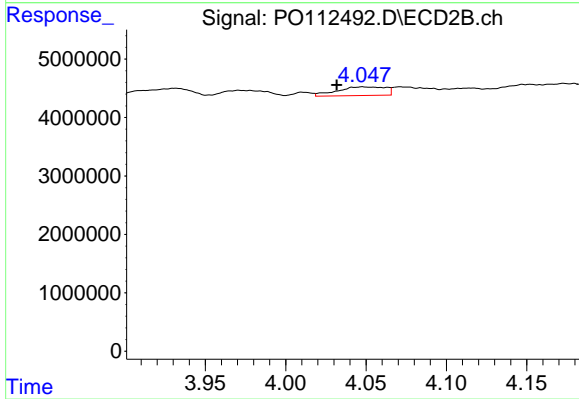
#9 AR-1221-2

R.T.: 3.971 min  
 Delta R.T.: 0.014 min  
 Response: 2449034  
 Conc: 48.28 ng/ml



#10 AR-1221-3

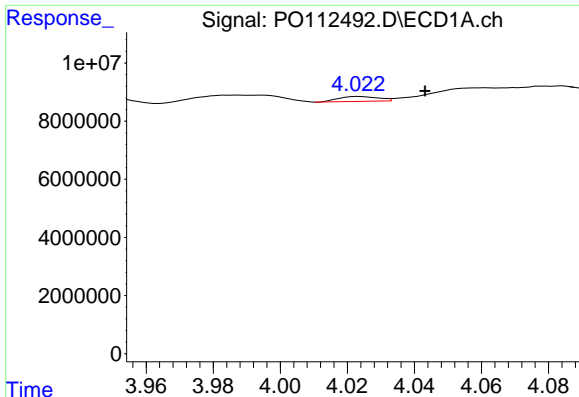
R.T.: 4.024 min  
 Delta R.T.: -0.020 min  
 Response: 1373439  
 Conc: 5.78 ng/ml



#10 AR-1221-3

R.T.: 4.048 min  
 Delta R.T.: 0.016 min  
 Response: 3091042  
 Conc: 19.50 ng/ml

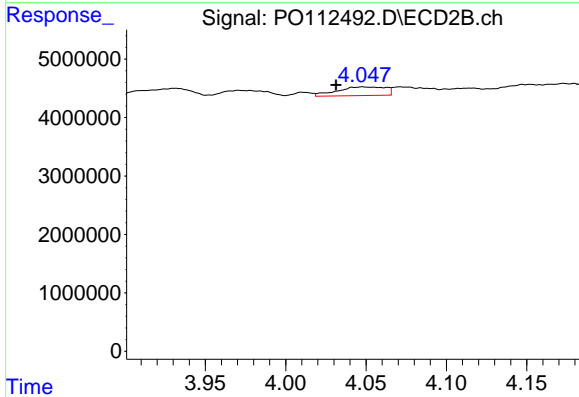




#11 AR-1232-1

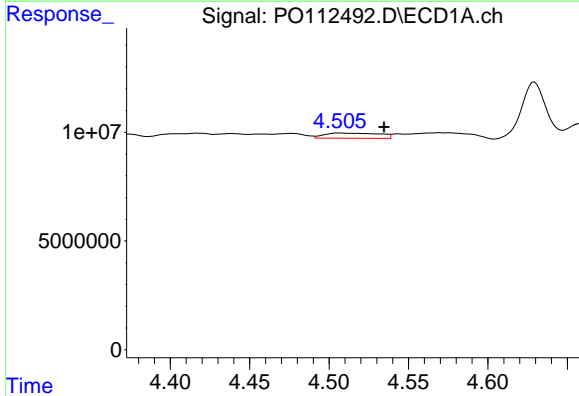
R.T.: 4.024 min  
 Delta R.T.: -0.019 min  
 Response: 1373439  
 Conc: 7.35 ng/ml

Instrument :  
 ECD\_O  
 ClientSampleId :  
 COMP-3



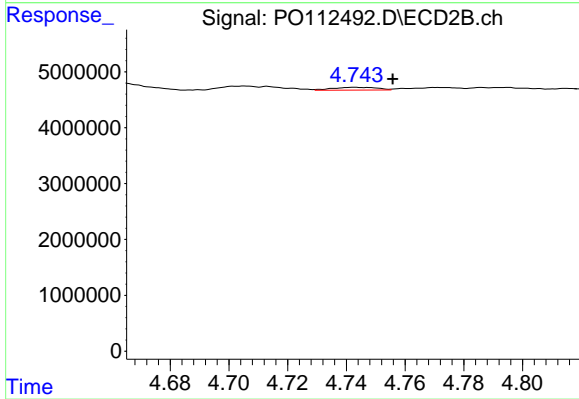
#11 AR-1232-1

R.T.: 4.048 min  
 Delta R.T.: 0.016 min  
 Response: 3091042  
 Conc: 24.43 ng/ml



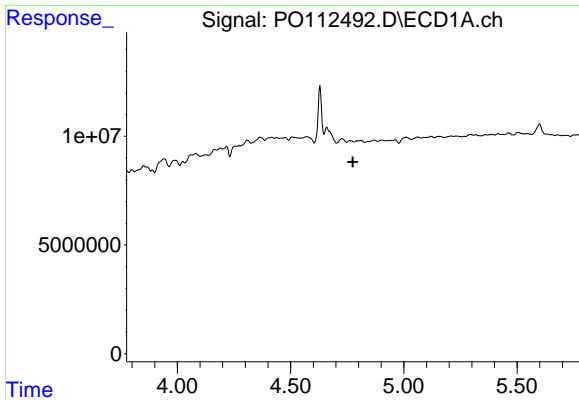
#12 AR-1232-2

R.T.: 4.507 min  
 Delta R.T.: -0.028 min  
 Response: 5769087  
 Conc: 53.60 ng/ml



#12 AR-1232-2

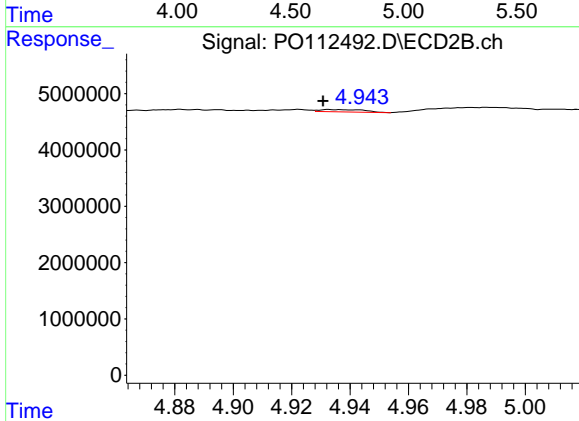
R.T.: 4.743 min  
 Delta R.T.: -0.013 min  
 Response: 528498  
 Conc: 4.03 ng/ml



#13 AR-1232-3

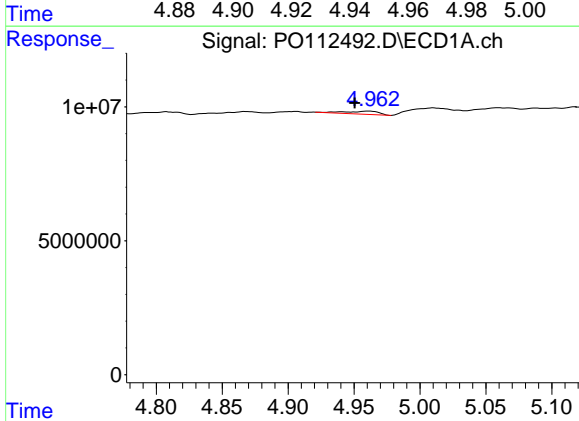
R.T.: 4.762 min  
 Delta R.T.: -0.013 min  
 Response: -287488  
 Conc: N.D.

Instrument :  
 ECD\_O  
 ClientSampleId :  
 COMP-3



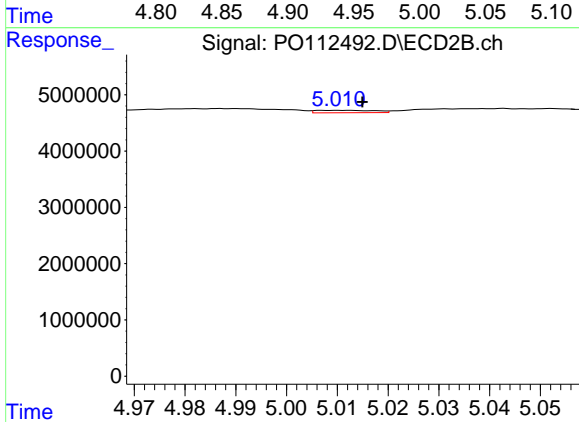
#13 AR-1232-3

R.T.: 4.933 min  
 Delta R.T.: 0.002 min  
 Response: 422344  
 Conc: 6.29 ng/ml



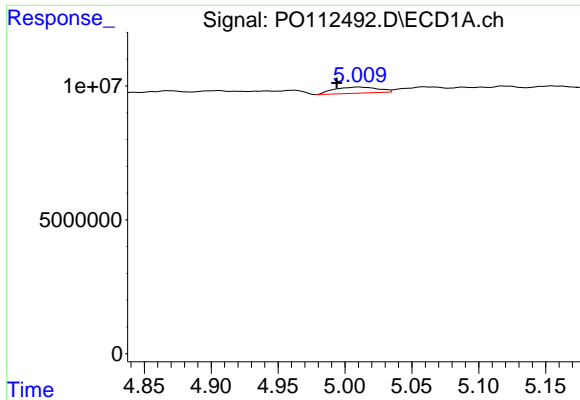
#14 AR-1232-4

R.T.: 4.961 min  
 Delta R.T.: 0.010 min  
 Response: 2021299  
 Conc: 19.30 ng/ml



#14 AR-1232-4

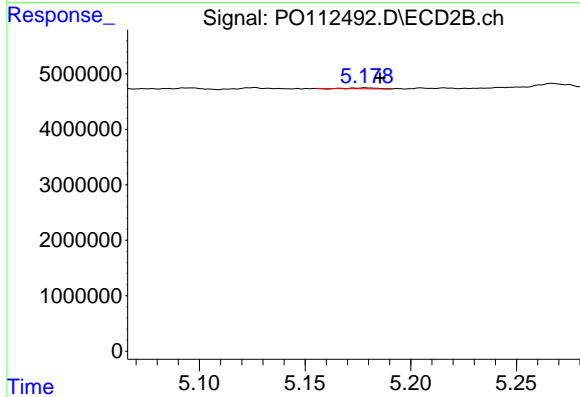
R.T.: 5.011 min  
 Delta R.T.: -0.004 min  
 Response: 353667  
 Conc: 5.91 ng/ml



#15 AR-1232-5

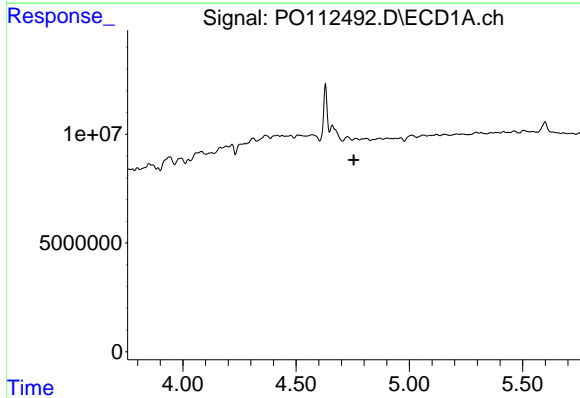
R.T.: 5.010 min  
 Delta R.T.: 0.017 min  
 Response: 5247398  
 Conc: 77.30 ng/ml

Instrument :  
 ECD\_O  
 ClientSampleId :  
 COMP-3



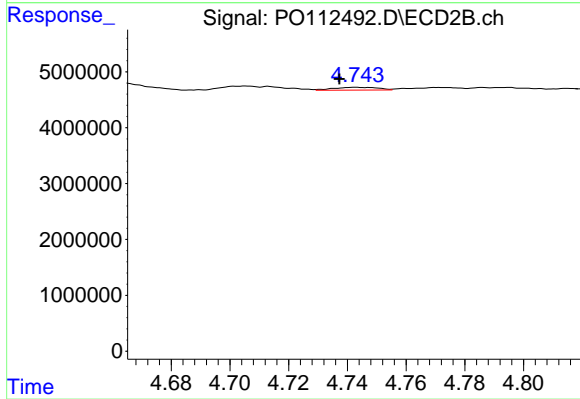
#15 AR-1232-5

R.T.: 5.179 min  
 Delta R.T.: -0.007 min  
 Response: 116085  
 Conc: 1.78 ng/ml



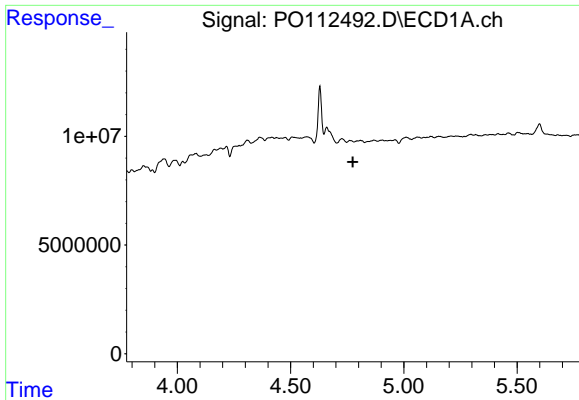
#16 AR-1242-1

R.T.: 4.762 min  
 Delta R.T.: 0.007 min  
 Response: -287488  
 Conc: N.D.



#16 AR-1242-1

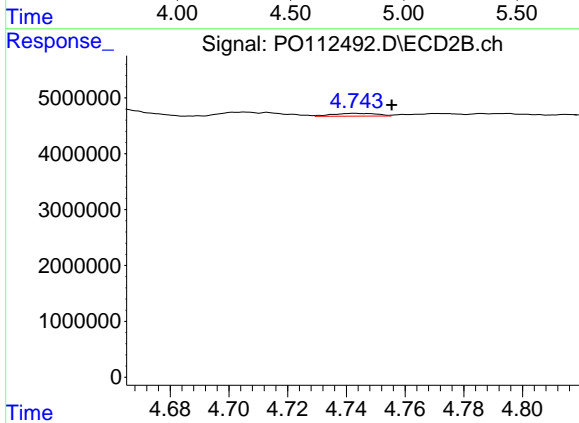
R.T.: 4.743 min  
 Delta R.T.: 0.005 min  
 Response: 528498  
 Conc: 3.34 ng/ml



#17 AR-1242-2

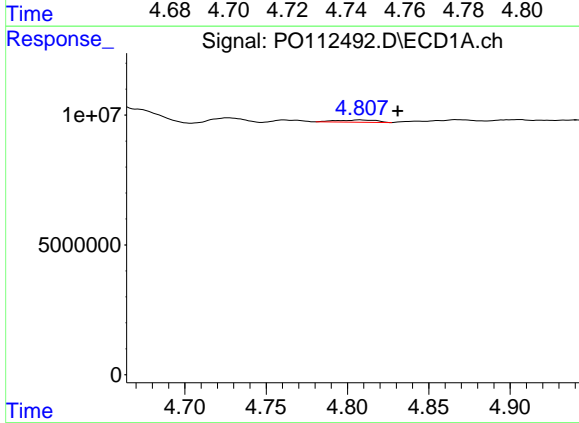
R.T.: 4.762 min  
 Delta R.T.: -0.013 min  
 Response: -287488  
 Conc: N.D.

Instrument :  
 ECD\_O  
 ClientSampleId :  
 COMP-3



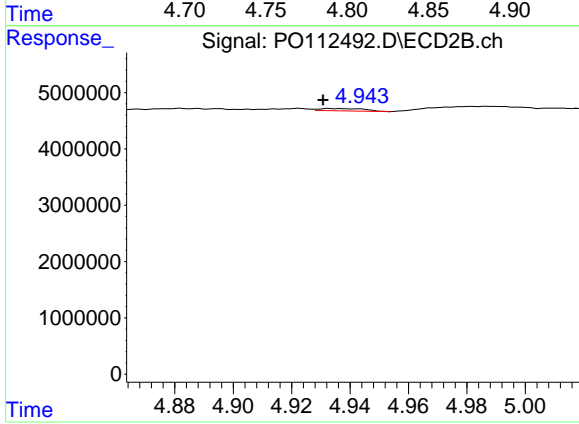
#17 AR-1242-2

R.T.: 4.743 min  
 Delta R.T.: -0.013 min  
 Response: 528498  
 Conc: 2.26 ng/ml



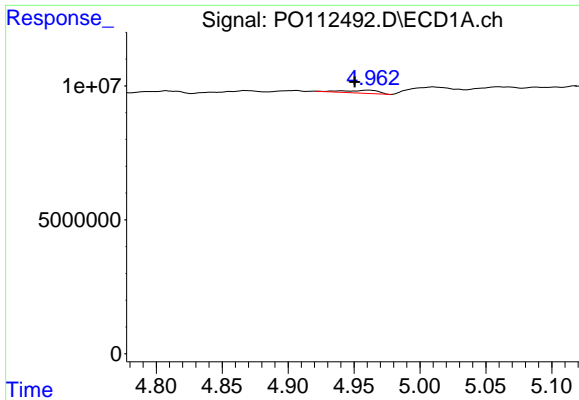
#18 AR-1242-3

R.T.: 4.808 min  
 Delta R.T.: -0.023 min  
 Response: 1445509  
 Conc: 6.11 ng/ml



#18 AR-1242-3

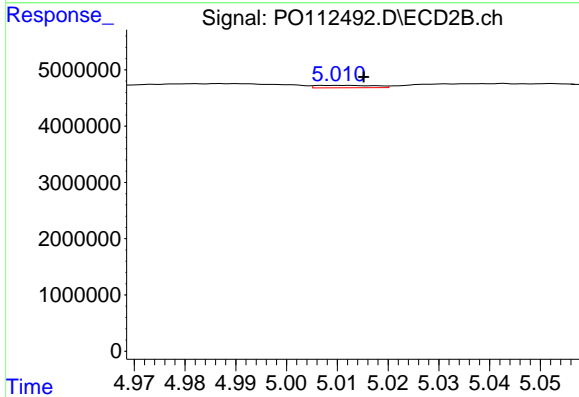
R.T.: 4.933 min  
 Delta R.T.: 0.002 min  
 Response: 422344  
 Conc: 3.48 ng/ml



#19 AR-1242-4

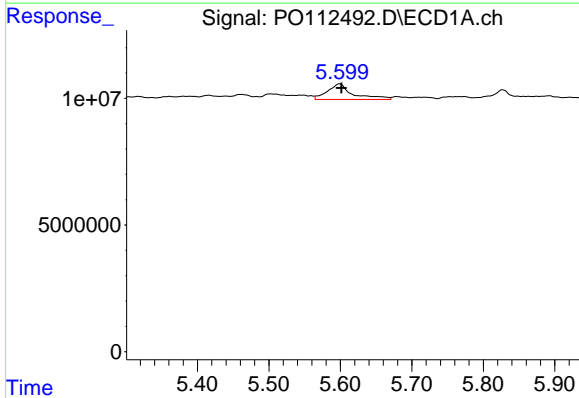
R.T.: 4.961 min  
 Delta R.T.: 0.011 min  
 Response: 2021299  
 Conc: 10.40 ng/ml

Instrument :  
 ECD\_O  
 ClientSampleId :  
 COMP-3



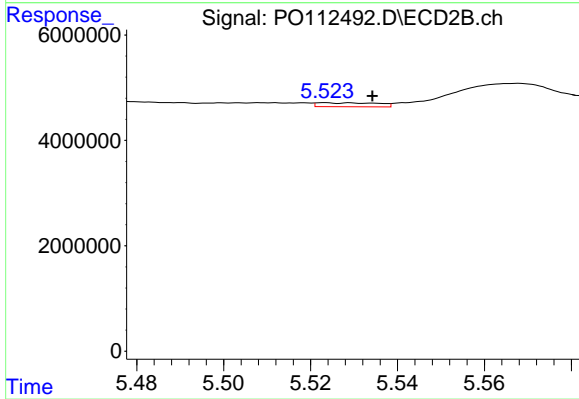
#19 AR-1242-4

R.T.: 5.011 min  
 Delta R.T.: -0.004 min  
 Response: 353667  
 Conc: 2.88 ng/ml



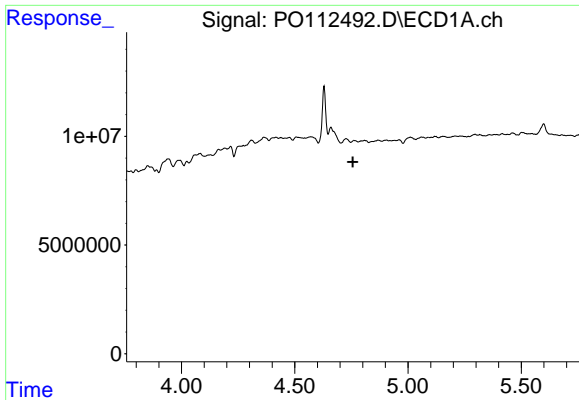
#20 AR-1242-5

R.T.: 5.599 min  
 Delta R.T.: -0.003 min  
 Response: 15143943  
 Conc: 70.79 ng/ml



#20 AR-1242-5

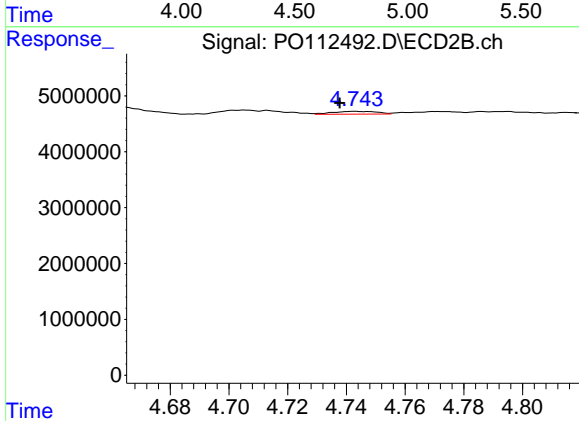
R.T.: 5.523 min  
 Delta R.T.: -0.011 min  
 Response: 727408  
 Conc: 4.52 ng/ml



#21 AR-1248-1

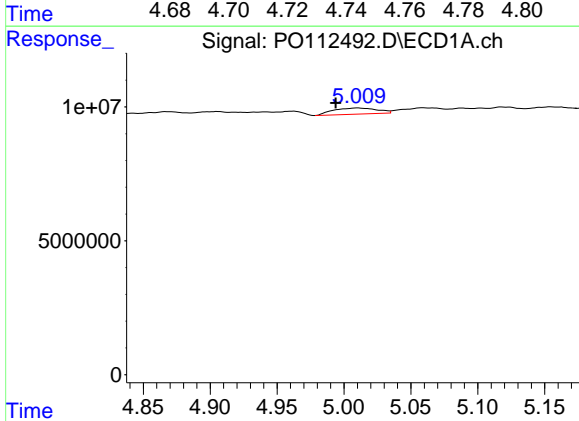
R.T.: 4.762 min  
 Delta R.T.: 0.006 min  
 Response: -287488  
 Conc: N.D.

Instrument :  
 ECD\_O  
 ClientSampleId :  
 COMP-3



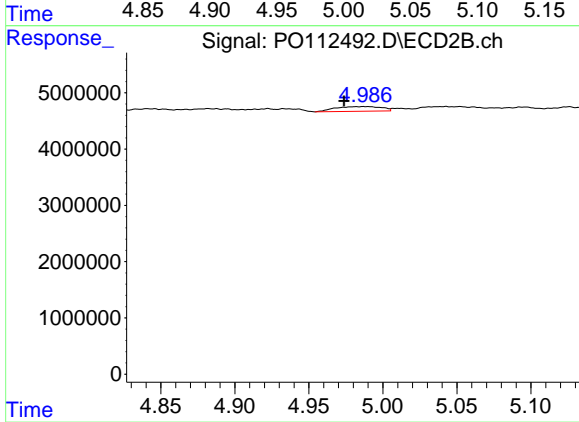
#21 AR-1248-1

R.T.: 4.743 min  
 Delta R.T.: 0.005 min  
 Response: 528498  
 Conc: 4.35 ng/ml



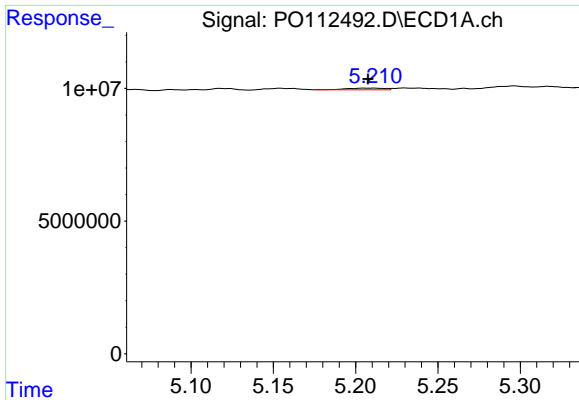
#22 AR-1248-2

R.T.: 5.010 min  
 Delta R.T.: 0.017 min  
 Response: 5247398  
 Conc: 20.57 ng/ml



#22 AR-1248-2

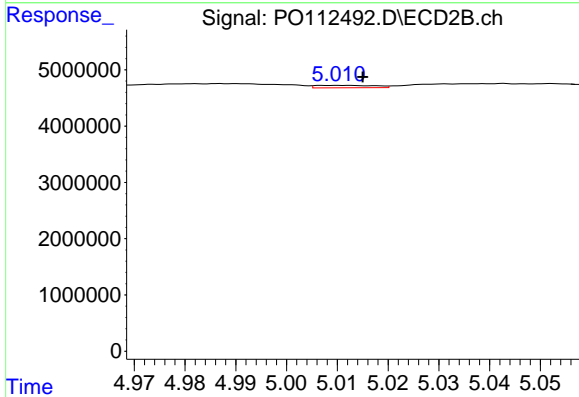
R.T.: 4.987 min  
 Delta R.T.: 0.014 min  
 Response: 1834375  
 Conc: 10.84 ng/ml



#23 AR-1248-3

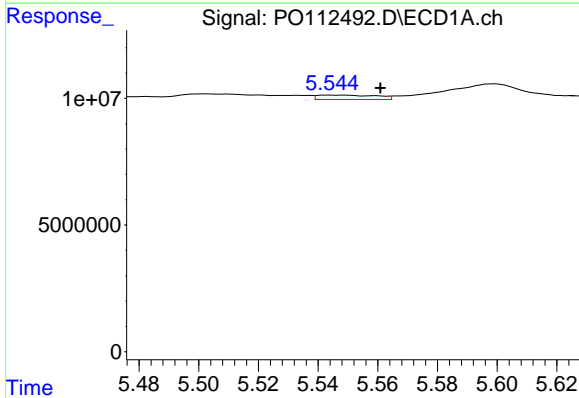
R.T.: 5.208 min  
 Delta R.T.: 0.000 min  
 Response: 1004935  
 Conc: 2.92 ng/ml

Instrument :  
 ECD\_O  
 ClientSampleId :  
 COMP-3



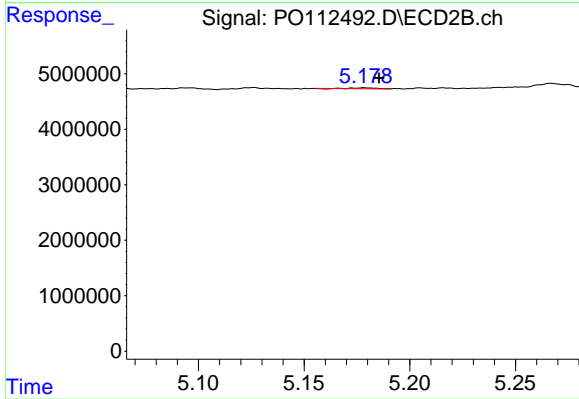
#23 AR-1248-3

R.T.: 5.011 min  
 Delta R.T.: -0.004 min  
 Response: 353667  
 Conc: 1.99 ng/ml



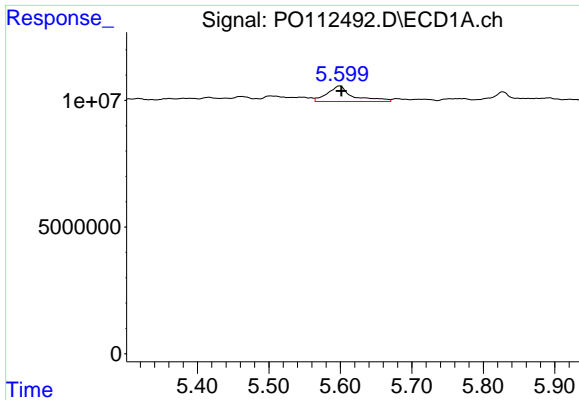
#24 AR-1248-4

R.T.: 5.546 min  
 Delta R.T.: -0.015 min  
 Response: 2371846  
 Conc: 4.67 ng/ml



#24 AR-1248-4

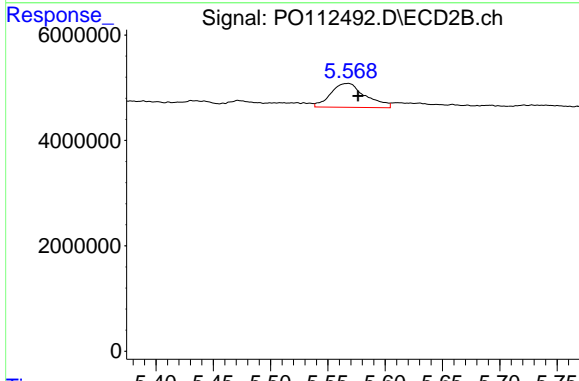
R.T.: 5.179 min  
 Delta R.T.: -0.007 min  
 Response: 116085  
 Conc: 0.56 ng/ml



#25 AR-1248-5

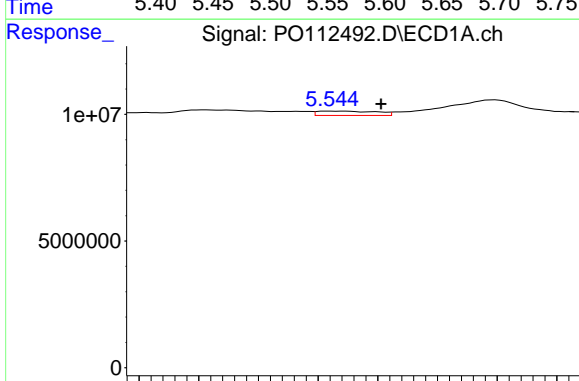
R.T.: 5.599 min  
 Delta R.T.: -0.003 min  
 Response: 15143943  
 Conc: 43.32 ng/ml

Instrument :  
 ECD\_O  
 ClientSampleId :  
 COMP-3



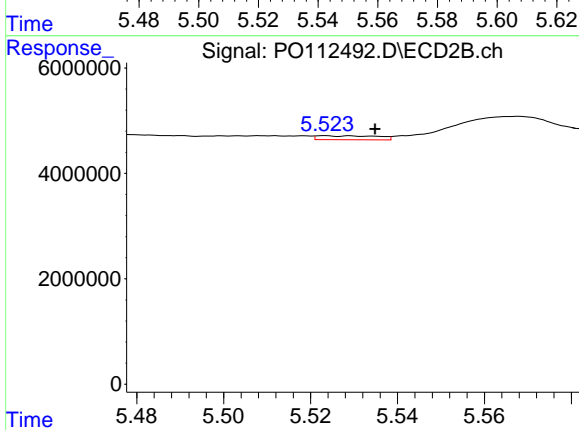
#25 AR-1248-5

R.T.: 5.567 min  
 Delta R.T.: -0.009 min  
 Response: 9567555  
 Conc: 44.55 ng/ml



#26 AR-1254-1

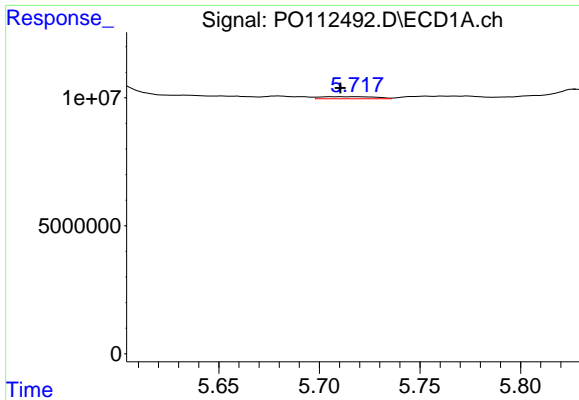
R.T.: 5.546 min  
 Delta R.T.: -0.016 min  
 Response: 2371846  
 Conc: 4.32 ng/ml



#26 AR-1254-1

R.T.: 5.523 min  
 Delta R.T.: -0.012 min  
 Response: 727408  
 Conc: 2.21 ng/ml

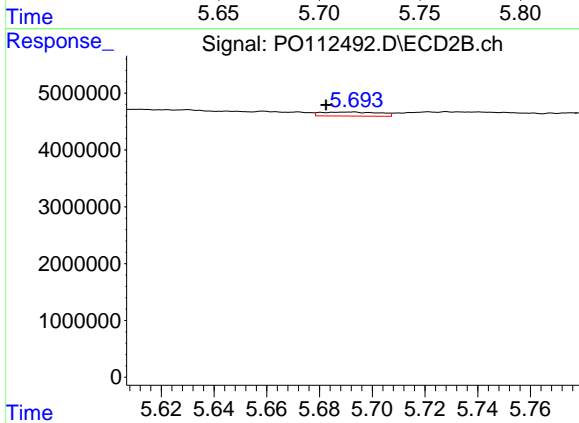




#27 AR-1254-2

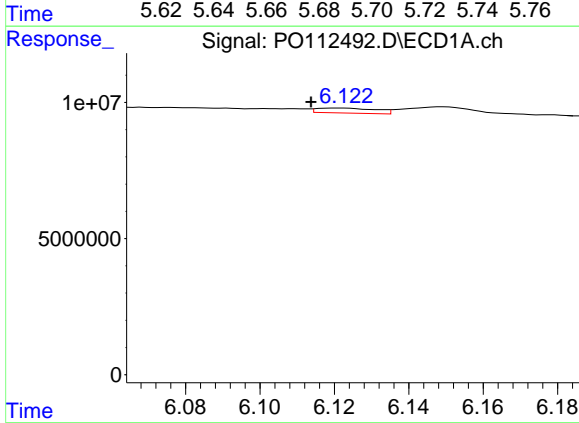
R.T.: 5.718 min  
 Delta R.T.: 0.008 min  
 Response: 1616897  
 Conc: 3.33 ng/ml

Instrument :  
 ECD\_O  
 ClientSampleId :  
 COMP-3



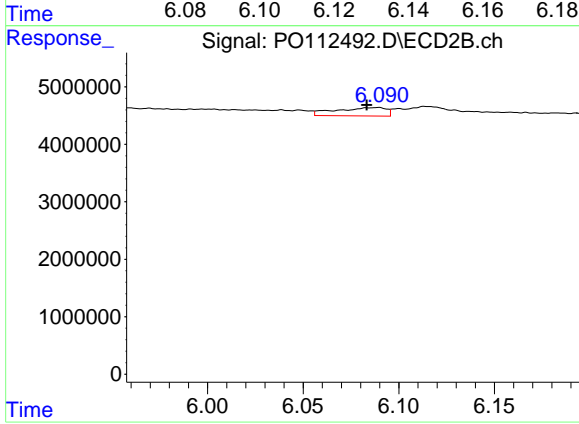
#27 AR-1254-2

R.T.: 5.692 min  
 Delta R.T.: 0.010 min  
 Response: 1094246  
 Conc: 3.78 ng/ml



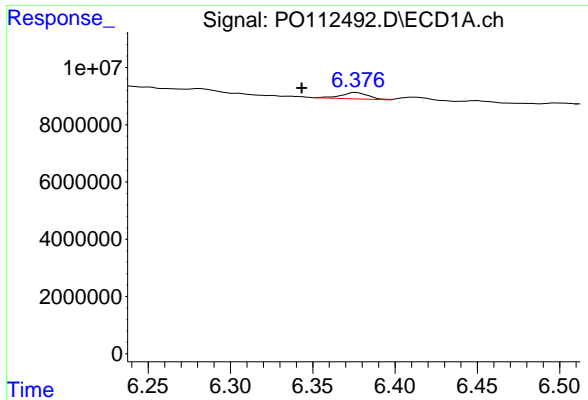
#28 AR-1254-3

R.T.: 6.121 min  
 Delta R.T.: 0.007 min  
 Response: 1993868  
 Conc: 2.68 ng/ml



#28 AR-1254-3

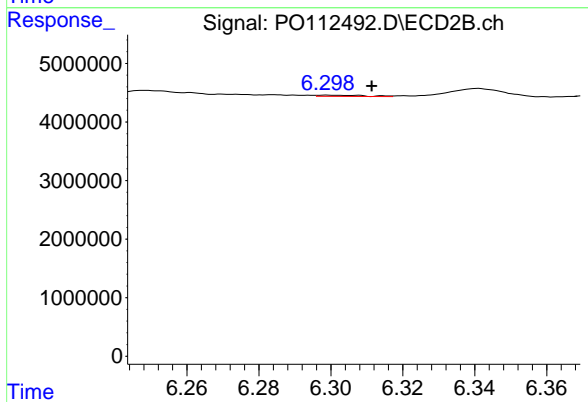
R.T.: 6.089 min  
 Delta R.T.: 0.006 min  
 Response: 2684080  
 Conc: 6.28 ng/ml



#29 AR-1254-4

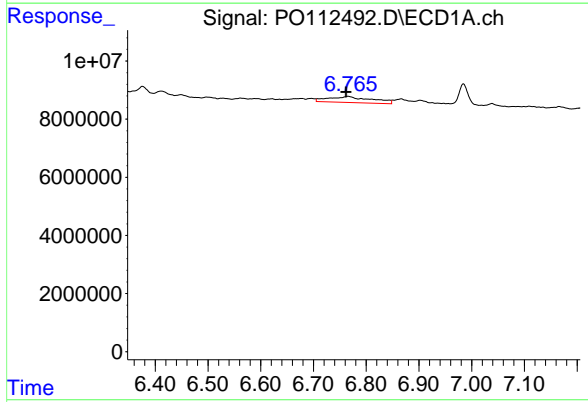
R.T.: 6.376 min  
 Delta R.T.: 0.033 min  
 Response: 2530274  
 Conc: 4.60 ng/ml

Instrument :  
 ECD\_O  
 ClientSampleId :  
 COMP-3



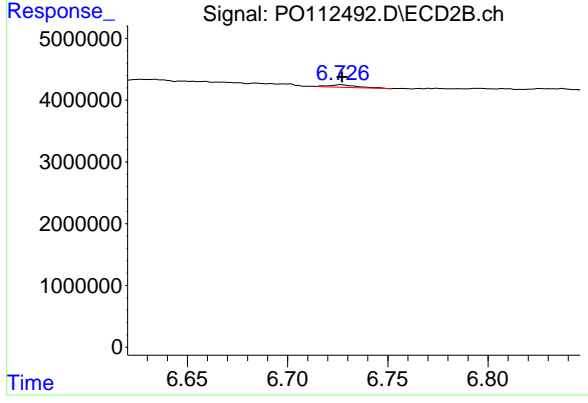
#29 AR-1254-4

R.T.: 6.299 min  
 Delta R.T.: -0.012 min  
 Response: 201867  
 Conc: 0.74 ng/ml



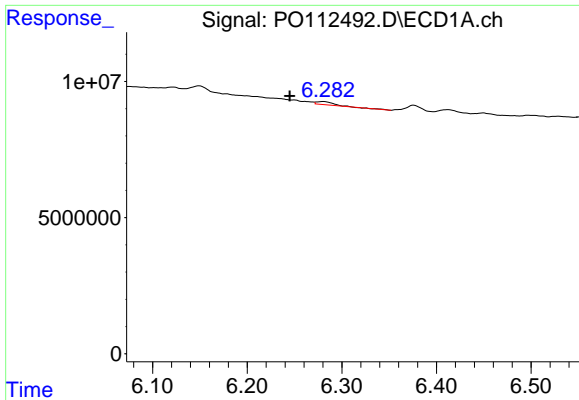
#30 AR-1254-5

R.T.: 6.766 min  
 Delta R.T.: 0.004 min  
 Response: 11926186  
 Conc: 16.85 ng/ml



#30 AR-1254-5

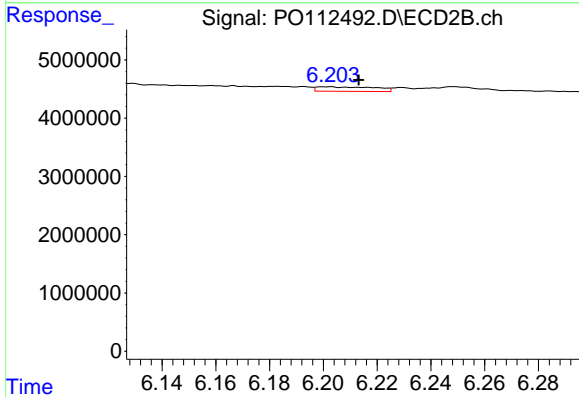
R.T.: 6.727 min  
 Delta R.T.: 0.000 min  
 Response: 407390  
 Conc: 1.22 ng/ml



#31 AR-1260-1

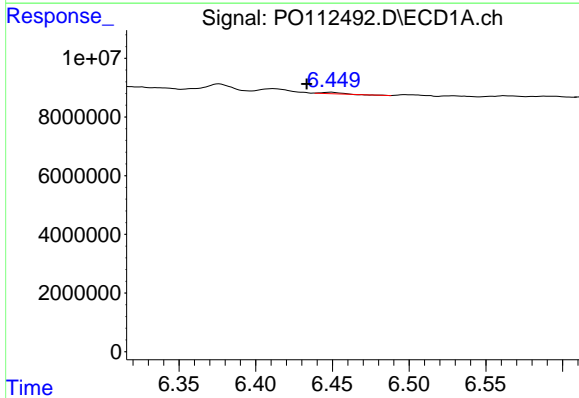
R.T.: 6.281 min  
 Delta R.T.: 0.036 min  
 Response: 1446166  
 Conc: 3.29 ng/ml

Instrument :  
 ECD\_O  
 ClientSampleId :  
 COMP-3



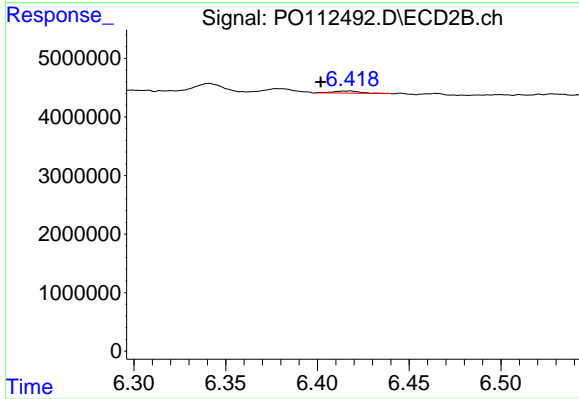
#31 AR-1260-1

R.T.: 6.202 min  
 Delta R.T.: -0.011 min  
 Response: 1161913  
 Conc: 4.68 ng/ml



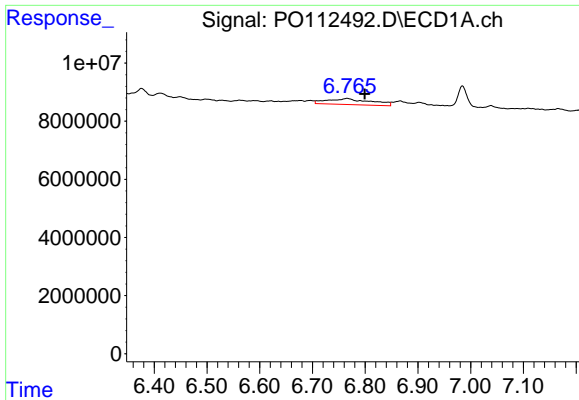
#32 AR-1260-2

R.T.: 6.449 min  
 Delta R.T.: 0.016 min  
 Response: 439038  
 Conc: 0.64 ng/ml



#32 AR-1260-2

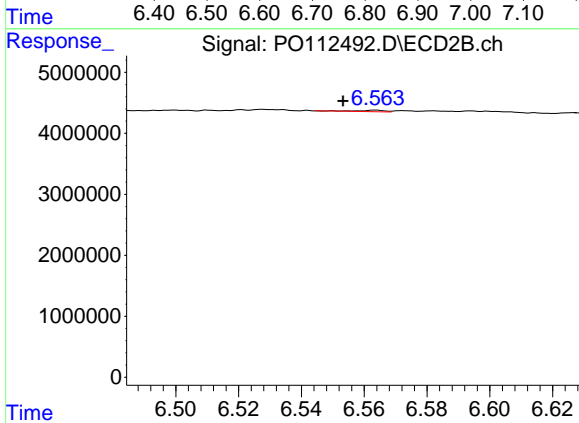
R.T.: 6.418 min  
 Delta R.T.: 0.016 min  
 Response: 289417  
 Conc: 0.88 ng/ml



#33 AR-1260-3

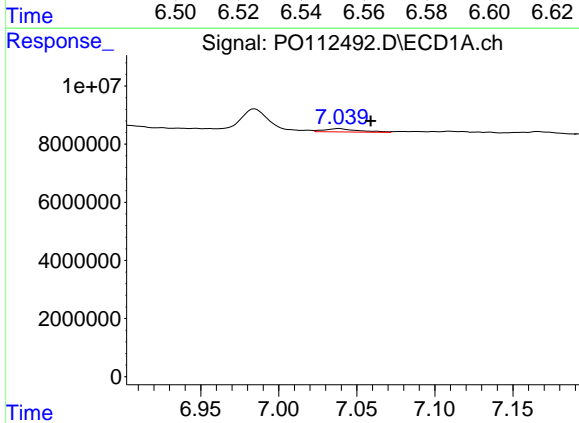
R.T.: 6.766 min  
 Delta R.T.: -0.033 min  
 Response: 11926186  
 Conc: 20.28 ng/ml

Instrument :  
 ECD\_O  
 ClientSampleId :  
 COMP-3



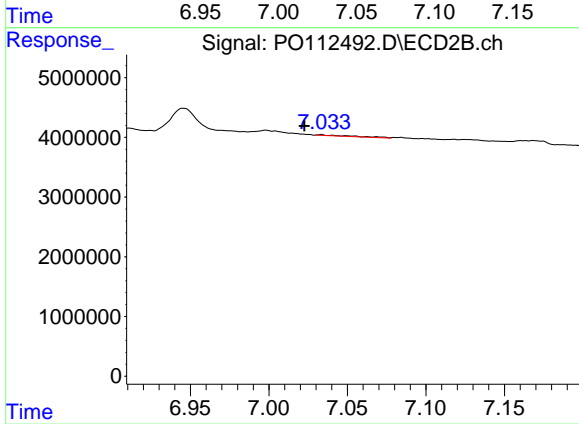
#33 AR-1260-3

R.T.: 6.564 min  
 Delta R.T.: 0.010 min  
 Response: 154626  
 Conc: 0.60 ng/ml



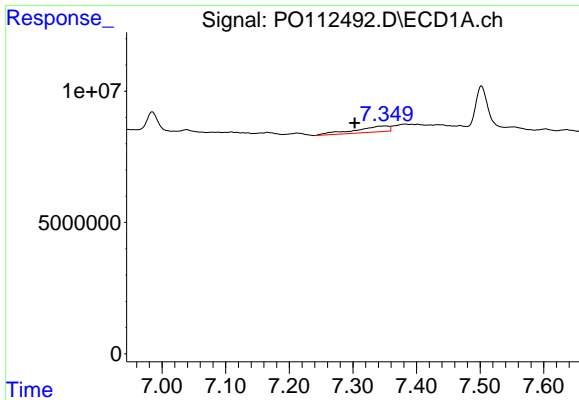
#34 AR-1260-4

R.T.: 7.039 min  
 Delta R.T.: -0.020 min  
 Response: 1760923  
 Conc: 3.90 ng/ml



#34 AR-1260-4

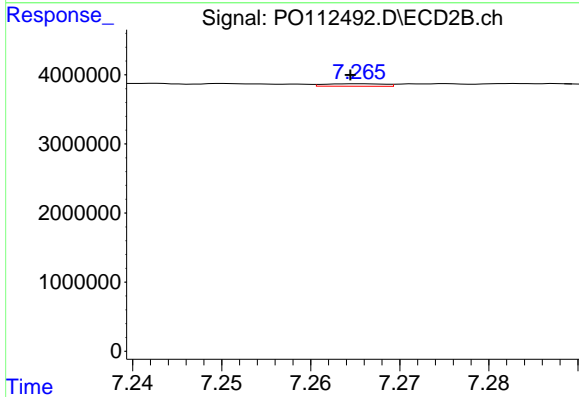
R.T.: 7.033 min  
 Delta R.T.: 0.010 min  
 Response: 255766  
 Conc: 1.34 ng/ml



#35 AR-1260-5

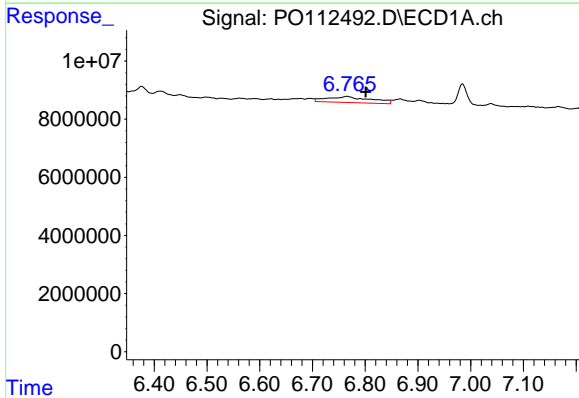
R.T.: 7.351 min  
 Delta R.T.: 0.048 min  
 Response: 8484389  
 Conc: 6.85 ng/ml

Instrument :  
 ECD\_O  
 ClientSampleId :  
 COMP-3



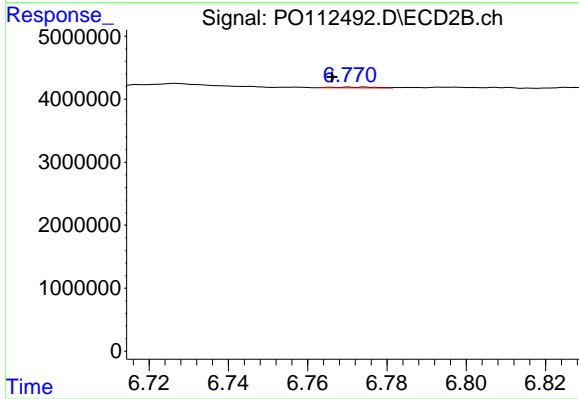
#35 AR-1260-5

R.T.: 7.265 min  
 Delta R.T.: 0.000 min  
 Response: 162935  
 Conc: 0.40 ng/ml



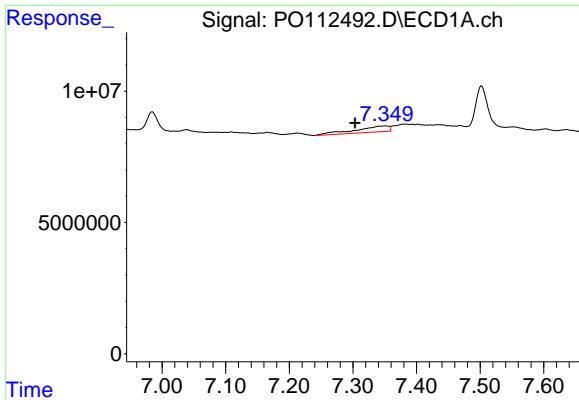
#36 AR-1262-1

R.T.: 6.766 min  
 Delta R.T.: -0.035 min  
 Response: 11926186  
 Conc: 12.83 ng/ml



#36 AR-1262-1

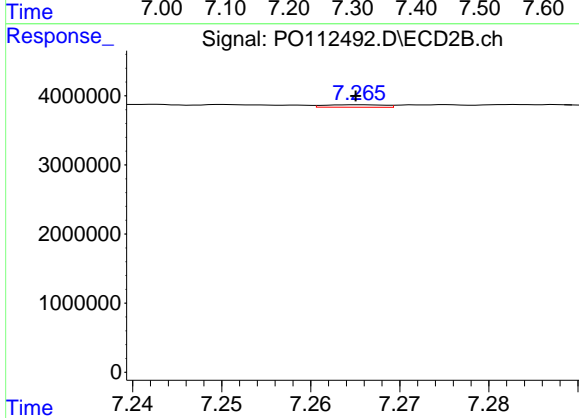
R.T.: 6.775 min  
 Delta R.T.: 0.009 min  
 Response: 89719  
 Conc: 0.22 ng/ml



#37 AR-1262-2

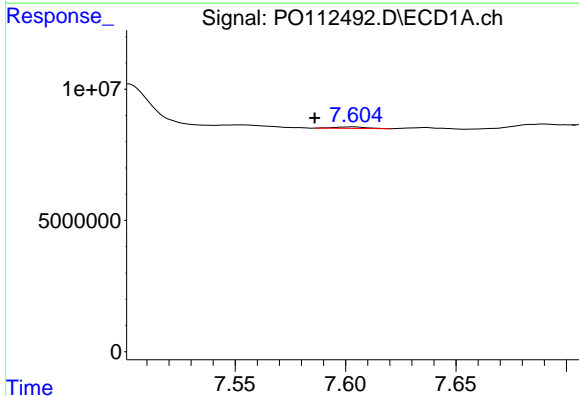
R.T.: 7.351 min  
 Delta R.T.: 0.048 min  
 Response: 8484389  
 Conc: 5.71 ng/ml

Instrument :  
 ECD\_O  
 ClientSampleId :  
 COMP-3



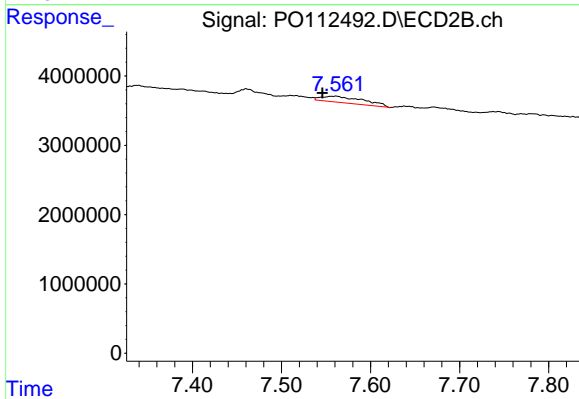
#37 AR-1262-2

R.T.: 7.265 min  
 Delta R.T.: 0.000 min  
 Response: 162935  
 Conc: 0.32 ng/ml



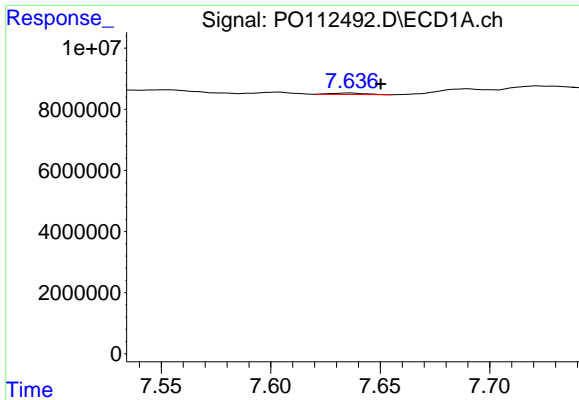
#38 AR-1262-3

R.T.: 7.603 min  
 Delta R.T.: 0.017 min  
 Response: 570778  
 Conc: 0.97 ng/ml



#38 AR-1262-3

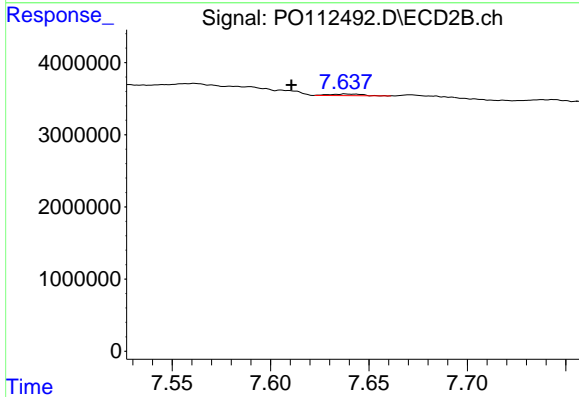
R.T.: 7.561 min  
 Delta R.T.: 0.015 min  
 Response: 2976935  
 Conc: 15.96 ng/ml



#39 AR-1262-4

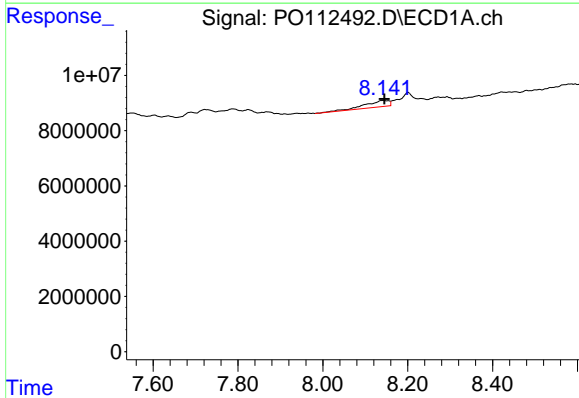
R.T.: 7.636 min  
 Delta R.T.: -0.014 min  
 Response: 499679  
 Conc: 0.50 ng/ml

Instrument :  
 ECD\_O  
 ClientSampleId :  
 COMP-3



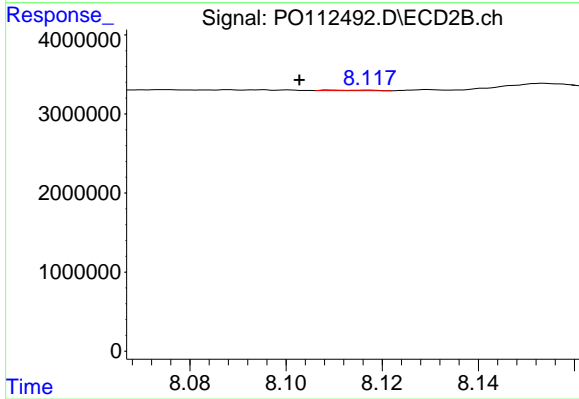
#39 AR-1262-4

R.T.: 7.638 min  
 Delta R.T.: 0.028 min  
 Response: 237275  
 Conc: 0.82 ng/ml



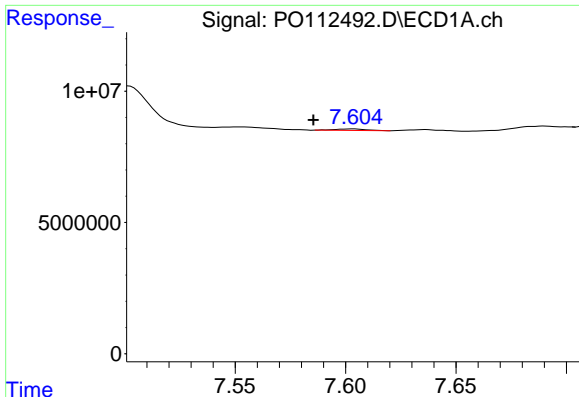
#40 AR-1262-5

R.T.: 8.142 min  
 Delta R.T.: -0.003 min  
 Response: 9159892  
 Conc: 21.10 ng/ml



#40 AR-1262-5

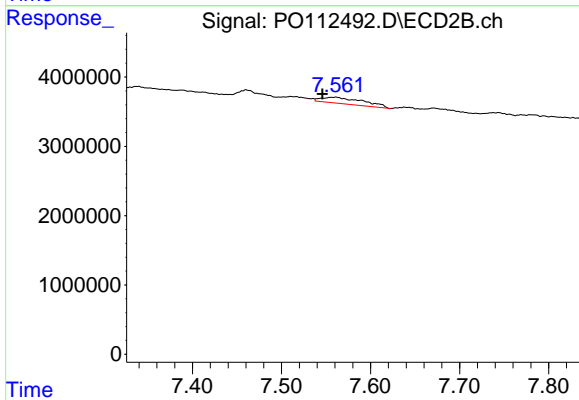
R.T.: 8.110 min  
 Delta R.T.: 0.007 min  
 Response: 46984  
 Conc: 0.47 ng/ml



#41 AR-1268-1

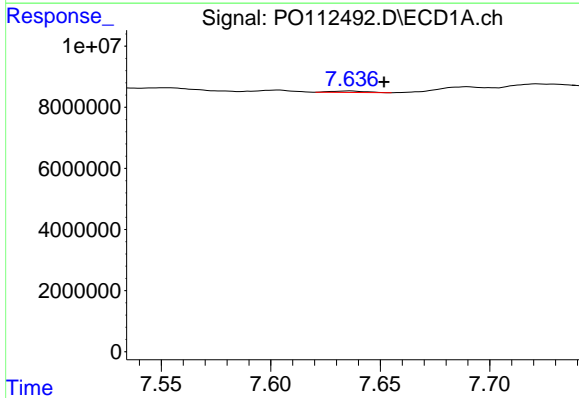
R.T.: 7.603 min  
 Delta R.T.: 0.018 min  
 Response: 570778  
 Conc: 0.33 ng/ml

Instrument :  
 ECD\_O  
 ClientSampleId :  
 COMP-3



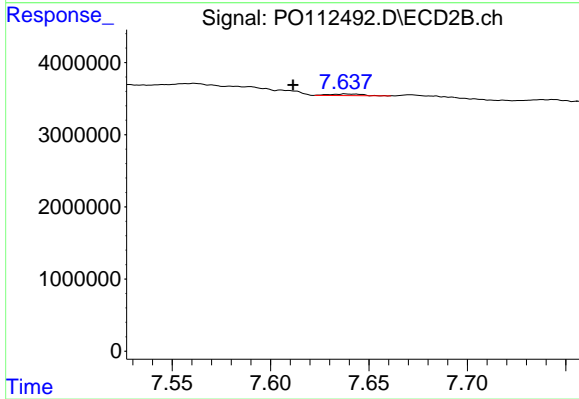
#41 AR-1268-1

R.T.: 7.561 min  
 Delta R.T.: 0.015 min  
 Response: 2976935  
 Conc: 5.75 ng/ml



#42 AR-1268-2

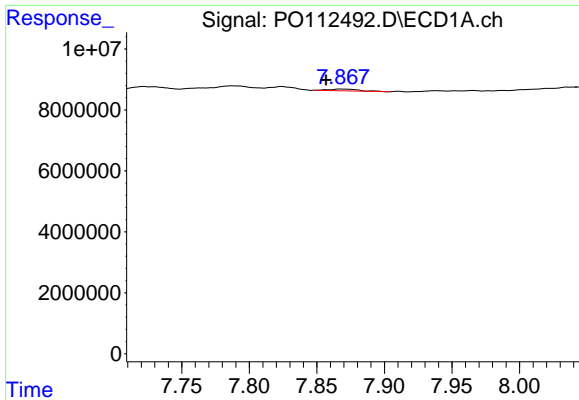
R.T.: 7.636 min  
 Delta R.T.: -0.016 min  
 Response: 499679  
 Conc: 0.34 ng/ml



#42 AR-1268-2

R.T.: 7.638 min  
 Delta R.T.: 0.027 min  
 Response: 237275  
 Conc: 0.56 ng/ml

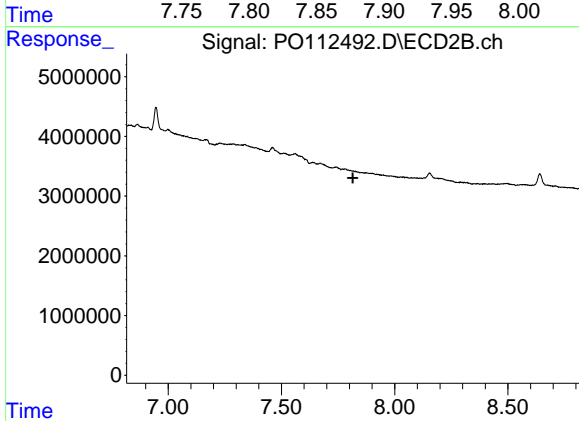




#43 AR-1268-3

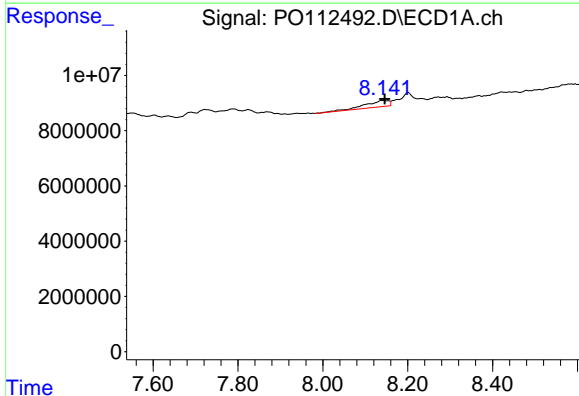
R.T.: 7.869 min  
 Delta R.T.: 0.012 min  
 Response: 856898  
 Conc: 0.68 ng/ml

Instrument :  
 ECD\_O  
 ClientSampleId :  
 COMP-3



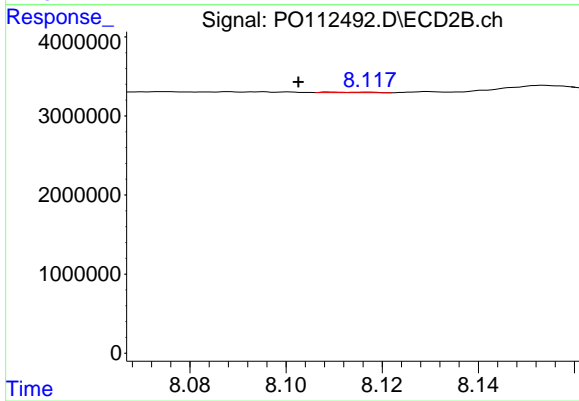
#43 AR-1268-3

R.T.: 0.000 min  
 Exp R.T. : 7.816 min  
 Response: 0  
 Conc: N.D.



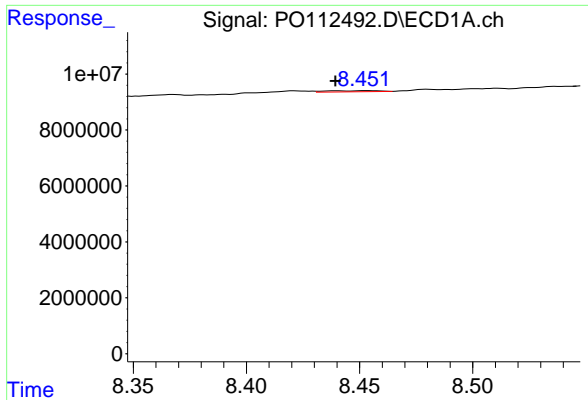
#44 AR-1268-4

R.T.: 8.142 min  
 Delta R.T.: -0.003 min  
 Response: 9159892  
 Conc: 19.01 ng/ml



#44 AR-1268-4

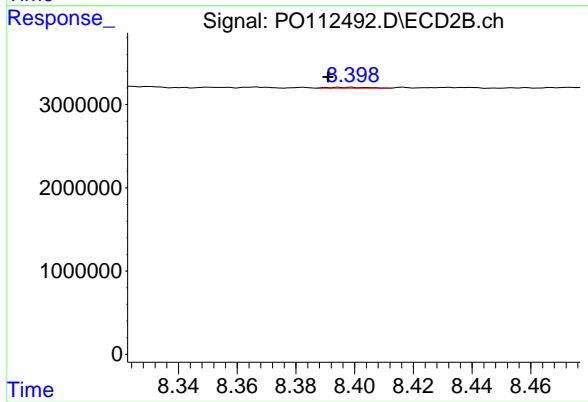
R.T.: 8.110 min  
 Delta R.T.: 0.007 min  
 Response: 46984  
 Conc: 0.42 ng/ml



#45 AR-1268-5

R.T.: 8.454 min  
 Delta R.T.: 0.015 min  
 Response: 663021  
 Conc: 0.20 ng/ml

Instrument :  
 ECD\_O  
 ClientSampleId :  
 COMP-3



#45 AR-1268-5

R.T.: 8.398 min  
 Delta R.T.: 0.007 min  
 Response: 92805  
 Conc: 0.13 ng/ml