

Data Path : Z:\pestpcbsrv\HPCHEM1\ECD_0\Data\P0072425\
 Data File : PO112493.D
 Signal(s) : Signal #1: ECD1A.ch Signal #2: ECD2B.ch
 Acq On : 25 Jul 2025 04:40
 Operator : YP/AJ
 Sample : Q2685-04 10X
 Misc :
 ALS Vial : 36 Sample Multiplier: 1

Instrument :
 ECD_0
 ClientSampleId :
 COMP-4

Integration File signal 1: autoint1.e
 Integration File signal 2: autoint2.e
 Quant Time: Jul 25 06:29:12 2025
 Quant Method : Z:\pestpcbsrv\HPCHEM1\ECD_0\methods\P0072325.M
 Quant Title : GC EXTRACTABLES
 QLast Update : Thu Jul 24 04:54:06 2025
 Response via : Initial Calibration
 Integrator: ChemStation

Volume Inj. : 2 µl
 Signal #1 Phase : ZB-MR1 Signal #2 Phase: ZB-MR2
 Signal #1 Info : 30Mx0.32mmx 0.50µ Signal #2 Info : 30M x 0.32mm x 0.25µm

Compound	RT#1	RT#2	Resp#1	Resp#2	ng/ml	ng/ml

System Monitoring Compounds						
1) SA Tetrachlo...	3.669	3.663	10088629	7072276	1.241	1.423
2) SA Decachlor...	8.695	8.640	5881472	2144192	0.804	1.213 #
Target Compounds						
3) L1 AR-1016-1	4.756	4.736	-193849	373477	N.D.	2.134 #
4) L1 AR-1016-2	4.766	4.748	152026	435089	0.374	1.670 #
5) L1 AR-1016-3	4.821	4.932	1918940	199690	7.333	1.469 #
6) L1 AR-1016-4	4.938	4.978	1028765	744423	4.856	6.701 #
7) L1 AR-1016-5	5.210	5.183	1068990	324410	4.871	2.264 #
8) L2 AR-1221-1	3.880	3.874	418220	82760	4.327	1.230 #
9) L2 AR-1221-2	3.989	3.958	2089132	2266996	29.071	44.689 #
10) L2 AR-1221-3	4.084f	4.038	712237	152177	2.996	0.960 #
11) L3 AR-1232-1	4.084f	4.038	712237	152177	3.809	1.203 #
12) L3 AR-1232-2	4.544	4.748	8649509	435089	80.367	3.317 #
13) L3 AR-1232-3	4.766	4.932	152026	199690	0.735	2.972 #
14) L3 AR-1232-4	4.938	5.016	1028765	295984	9.822	4.947 #
15) L3 AR-1232-5	4.991	5.183	331887	324410	4.889	4.975
16) L4 AR-1242-1	4.756	4.736	-193849	373477	N.D.	2.358 #
17) L4 AR-1242-2	4.766	4.748	152026	435089	0.411	1.862 #
18) L4 AR-1242-3	4.821	4.932	1918940	199690	8.109	1.648 #
19) L4 AR-1242-4	4.938	5.016	1028765	295984	5.295	2.411 #
20) L4 AR-1242-5	5.609	5.535	1698416	4886413	7.940	30.356 #
21) L5 AR-1248-1	4.756	4.736	-193849	373477	N.D.	3.074 #
22) L5 AR-1248-2	4.991	4.978	331887	744423	1.301	4.398 #
23) L5 AR-1248-3	5.210	5.016	1068990	295984	3.110	1.666 #
24) L5 AR-1248-4	5.561	5.183	5174044	324410	10.184	1.557 #
25) L5 AR-1248-5	5.609	5.576	1698416	1217351	4.858	5.668
26) L6 AR-1254-1	5.561	5.535	5174044	4886413	9.425	14.869 #
27) L6 AR-1254-2	5.710	5.683	9890482	7884475	20.354	27.236 #
28) L6 AR-1254-3	6.113	6.083	28088485	14700760	37.739	34.391
29) L6 AR-1254-4	6.343	6.311	15160708	7574343	27.580	27.749
30) L6 AR-1254-5	6.761	6.727	26816341	16681067	37.886	49.940 #
31) L7 AR-1260-1	6.244	6.214	20937373	9966314	47.657	40.104
32) L7 AR-1260-2	6.433	6.402	23899043	13014129	34.742	39.497
33) L7 AR-1260-3	6.800	6.553	16972368	9893104	28.864	38.506 #
34) L7 AR-1260-4	7.059	7.023	13042580	7976344	28.919	41.693 #
35) L7 AR-1260-5	7.302	7.264	40328663	23319957	32.546	56.575 #
36) L8 AR-1262-1	6.800	6.765	16972368	9371283	18.265	22.591
37) L8 AR-1262-2	7.302	7.264	40328663	23319957	27.121	45.234 #
38) L8 AR-1262-3	7.586	7.545	10945556	5472826	18.544	29.341 #
39) L8 AR-1262-4	7.649	7.609	23472629	9858747	23.610	34.219 #
40) L8 AR-1262-5	8.145	8.102	11259379	3116786	25.940	31.323
41) L9 AR-1268-1	7.586	7.545	10945556	5472826	6.251	10.568 #

Data Path : Z:\pestpcbsrv\HPCHEM1\ECD_0\Data\P0072425\
 Data File : P0112493.D
 Signal(s) : Signal #1: ECD1A.ch Signal #2: ECD2B.ch
 Acq On : 25 Jul 2025 04:40
 Operator : YP/AJ
 Sample : Q2685-04 10X
 Misc :
 ALS Vial : 36 Sample Multiplier: 1

Instrument :
 ECD_0
 ClientSampleId :
 COMP-4

Integration File signal 1: autoint1.e
 Integration File signal 2: autoint2.e
 Quant Time: Jul 25 06:29:12 2025
 Quant Method : Z:\pestpcbsrv\HPCHEM1\ECD_0\methods\P0072325.M
 Quant Title : GC EXTRACTABLES
 QLast Update : Thu Jul 24 04:54:06 2025
 Response via : Initial Calibration
 Integrator: ChemStation

Volume Inj. : 2 µl
 Signal #1 Phase : ZB-MR1 Signal #2 Phase: ZB-MR2
 Signal #1 Info : 30Mx0.32mmx 0.50µ Signal #2 Info : 30M x 0.32mm x 0.25µm

	Compound	RT#1	RT#2	Resp#1	Resp#2	ng/ml	ng/ml
42)	L9 AR-1268-2	7.649	7.609	23472629	9858747	15.935	23.194 #
43)	L9 AR-1268-3	7.851	7.813	1063824	233592	0.850	0.727
44)	L9 AR-1268-4	8.145	8.102	11259379	3116786	23.366	28.005
45)	L9 AR-1268-5	8.441	8.390	2877372	644300	0.857	0.881

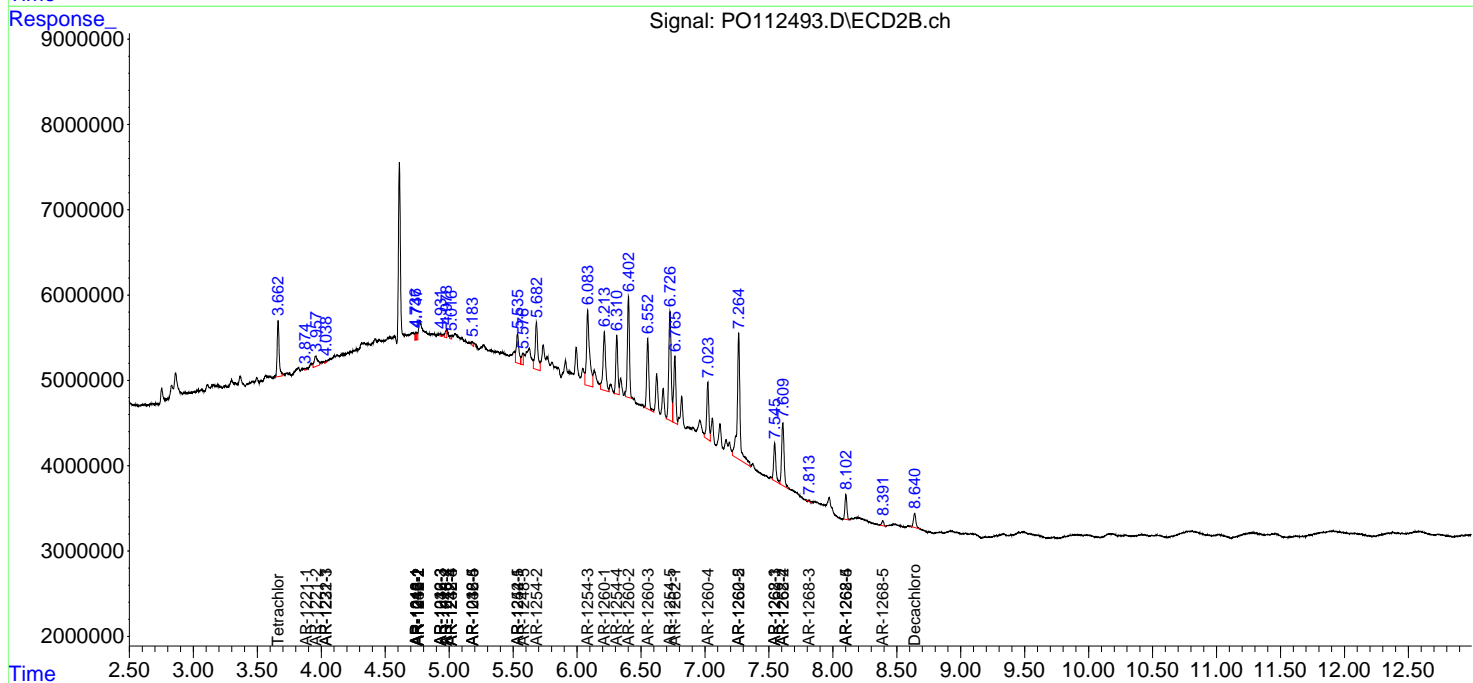
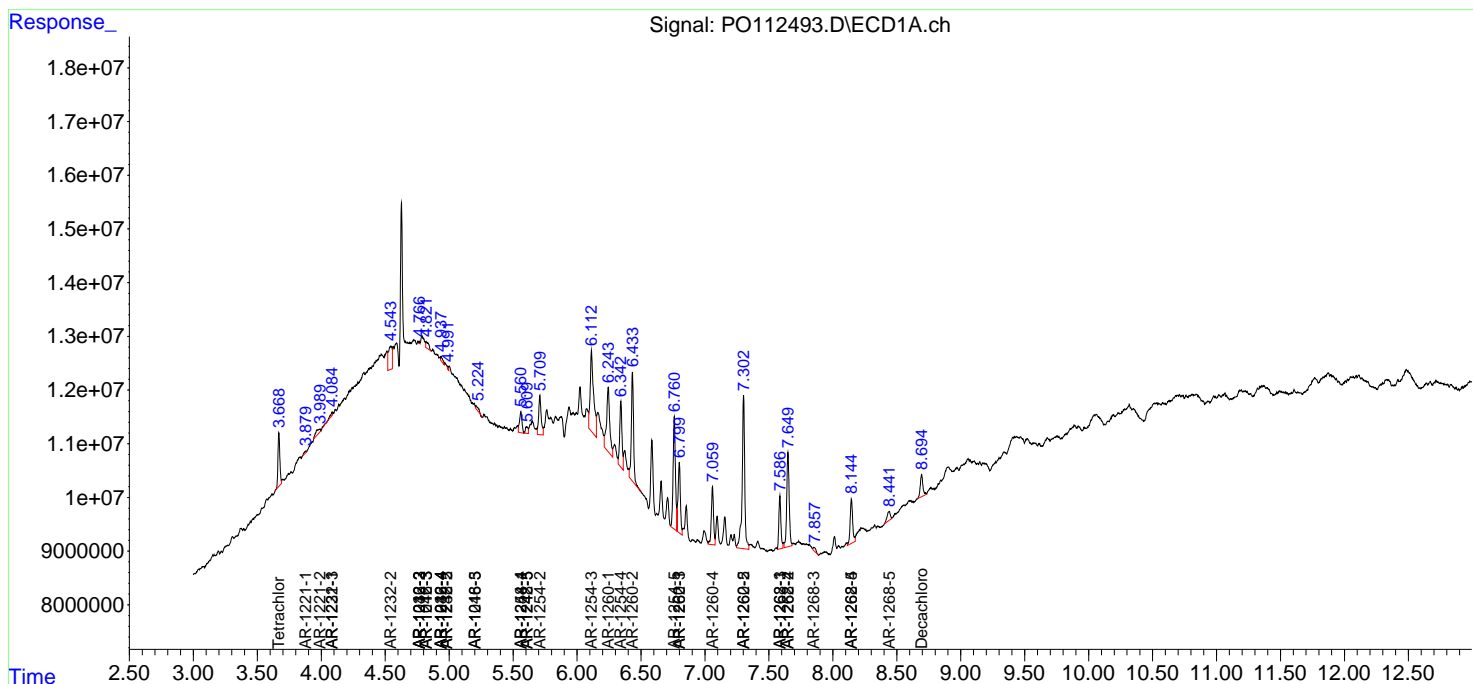
(f)=RT Delta > 1/2 Window (#)=Amounts differ by > 25% (m)=manual int.

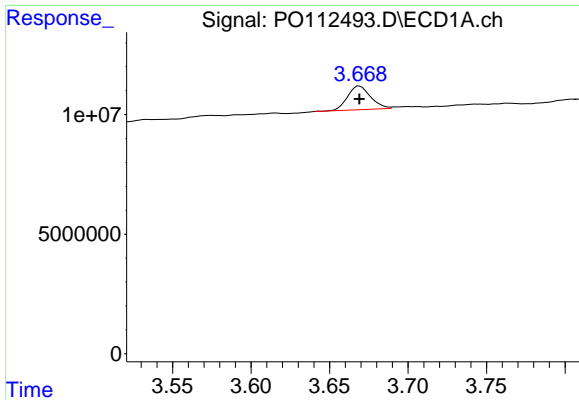
Data Path : Z:\pestpcbsrv\HPCHEM1\ECD_O\Data\PO072425\
 Data File : PO112493.D
 Signal(s) : Signal #1: ECD1A.ch Signal #2: ECD2B.ch
 Acq On : 25 Jul 2025 04:40
 Operator : YP/AJ
 Sample : Q2685-04 10X
 Misc :
 ALS Vial : 36 Sample Multiplier: 1

Instrument :
 ECD_O
 ClientSampleId :
 COMP-4

Integration File signal 1: autoint1.e
 Integration File signal 2: autoint2.e
 Quant Time: Jul 25 06:29:12 2025
 Quant Method : Z:\pestpcbsrv\HPCHEM1\ECD_O\methods\PO072325.M
 Quant Title : GC EXTRACTABLES
 QLast Update : Thu Jul 24 04:54:06 2025
 Response via : Initial Calibration
 Integrator: ChemStation

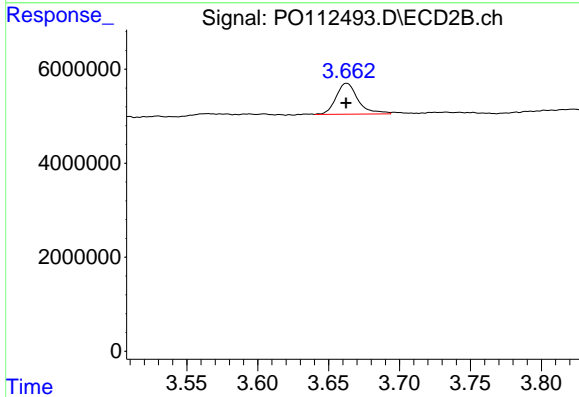
Volume Inj. : 2 µl
 Signal #1 Phase : ZB-MR1 Signal #2 Phase: ZB-MR2
 Signal #1 Info : 30Mx0.32mmx 0.50µ Signal #2 Info : 30M x 0.32mm x 0.25µm



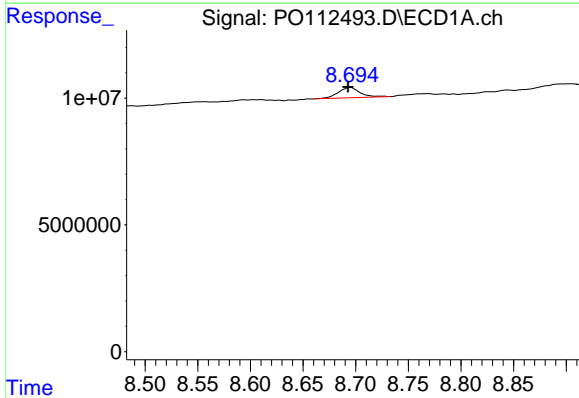


#1 Tetrachloro-m-xylene
 R.T.: 3.669 min
 Delta R.T.: 0.000 min
 Response: 10088629
 Conc: 1.24 ng/ml

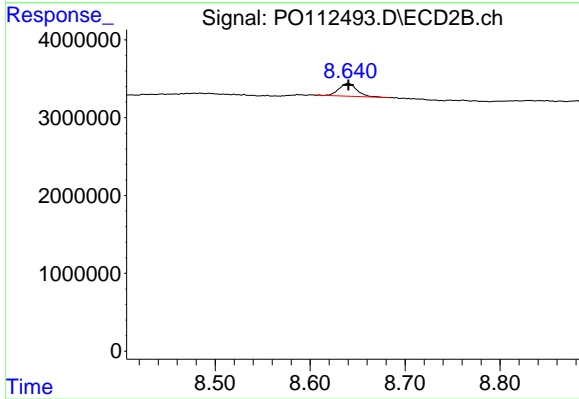
Instrument :
 ECD_O
 ClientSampleId :
 COMP-4



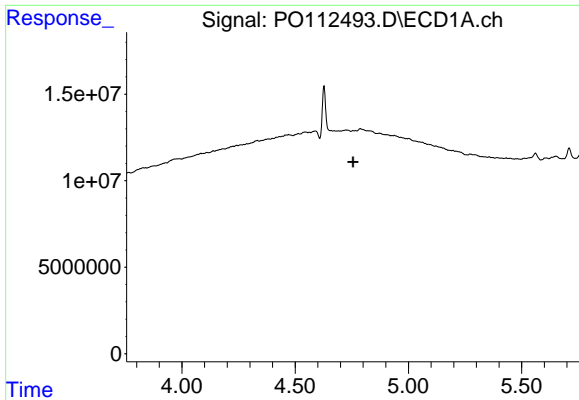
#1 Tetrachloro-m-xylene
 R.T.: 3.663 min
 Delta R.T.: 0.000 min
 Response: 7072276
 Conc: 1.42 ng/ml



#2 Decachlorobiphenyl
 R.T.: 8.695 min
 Delta R.T.: 0.002 min
 Response: 5881472
 Conc: 0.80 ng/ml



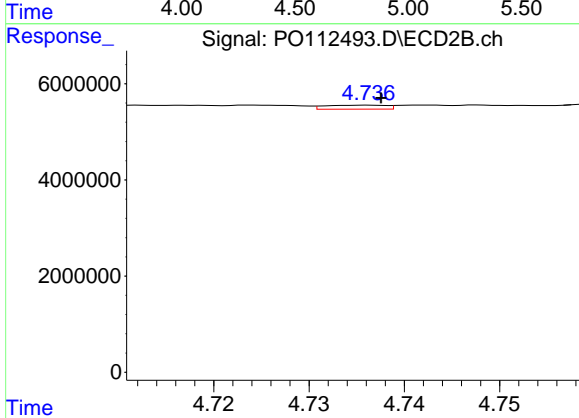
#2 Decachlorobiphenyl
 R.T.: 8.640 min
 Delta R.T.: 0.000 min
 Response: 2144192
 Conc: 1.21 ng/ml



#3 AR-1016-1

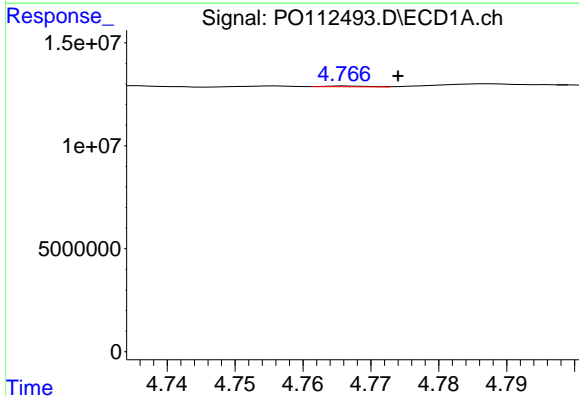
R.T.: 4.756 min
 Delta R.T.: 0.000 min
 Response: -193849
 Conc: N.D.

Instrument :
 ECD_O
 ClientSampleId :
 COMP-4



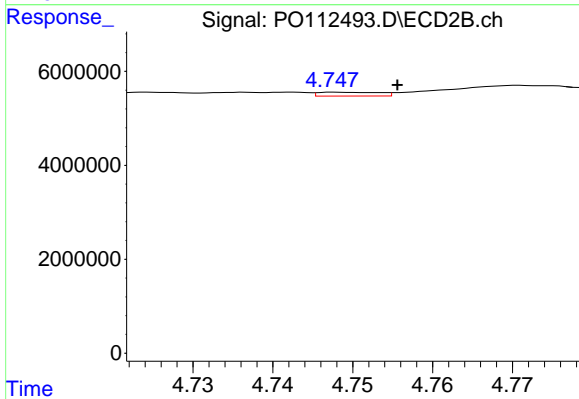
#3 AR-1016-1

R.T.: 4.736 min
 Delta R.T.: -0.001 min
 Response: 373477
 Conc: 2.13 ng/ml



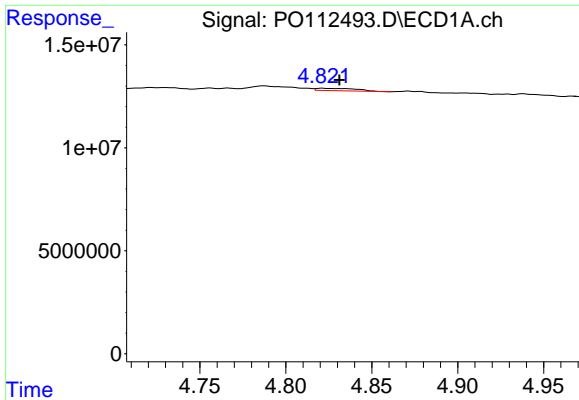
#4 AR-1016-2

R.T.: 4.766 min
 Delta R.T.: -0.008 min
 Response: 152026
 Conc: 0.37 ng/ml



#4 AR-1016-2

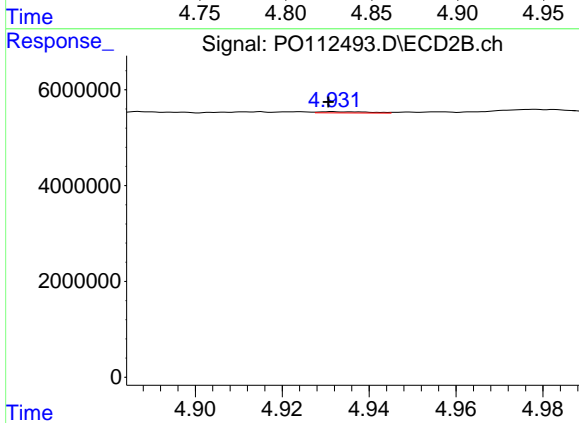
R.T.: 4.748 min
 Delta R.T.: -0.008 min
 Response: 435089
 Conc: 1.67 ng/ml



#5 AR-1016-3

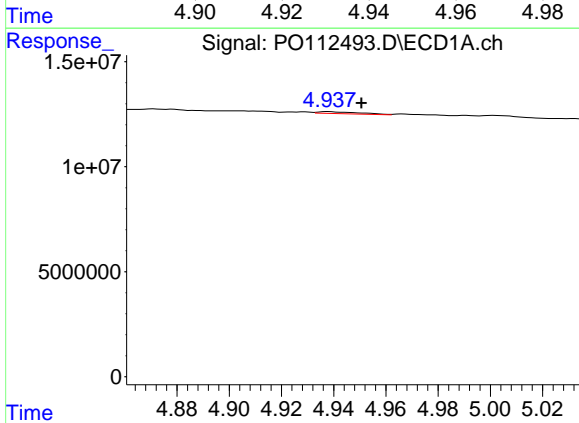
R.T.: 4.821 min
 Delta R.T.: -0.010 min
 Response: 1918940
 Conc: 7.33 ng/ml

Instrument :
 ECD_O
 ClientSampleId :
 COMP-4



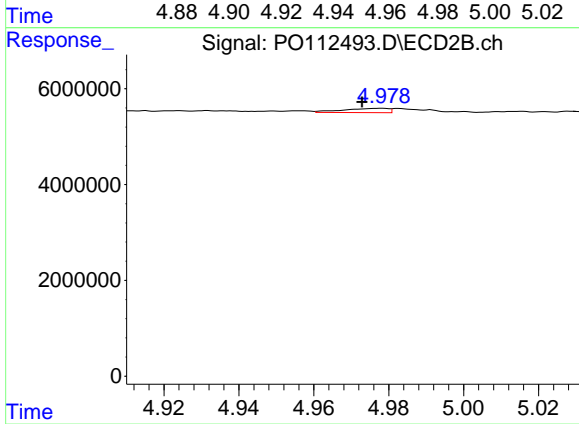
#5 AR-1016-3

R.T.: 4.932 min
 Delta R.T.: 0.001 min
 Response: 199690
 Conc: 1.47 ng/ml



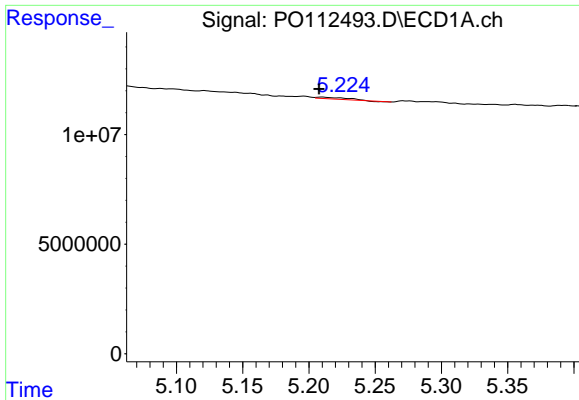
#6 AR-1016-4

R.T.: 4.938 min
 Delta R.T.: -0.013 min
 Response: 1028765
 Conc: 4.86 ng/ml



#6 AR-1016-4

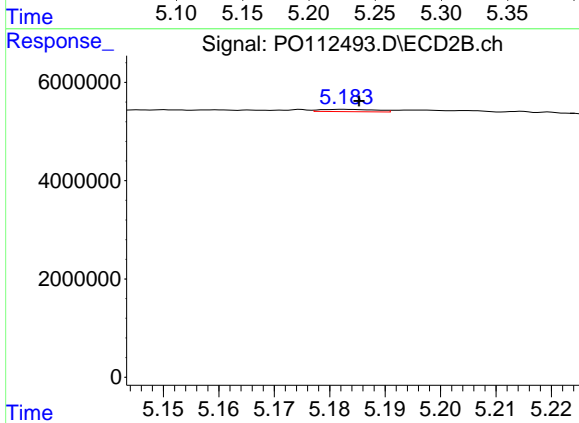
R.T.: 4.978 min
 Delta R.T.: 0.005 min
 Response: 744423
 Conc: 6.70 ng/ml



#7 AR-1016-5

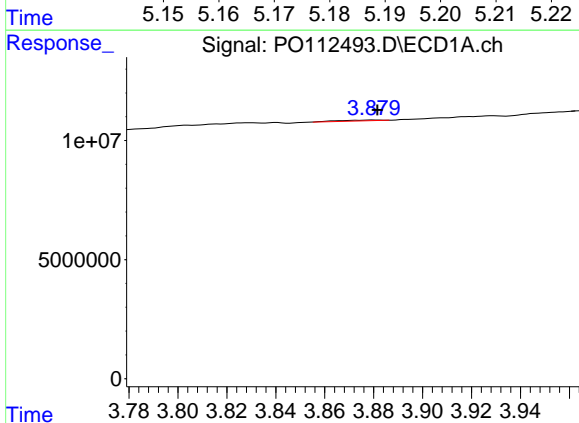
R.T.: 5.210 min
 Delta R.T.: 0.002 min
 Response: 1068990
 Conc: 4.87 ng/ml

Instrument :
 ECD_O
 ClientSampleId :
 COMP-4



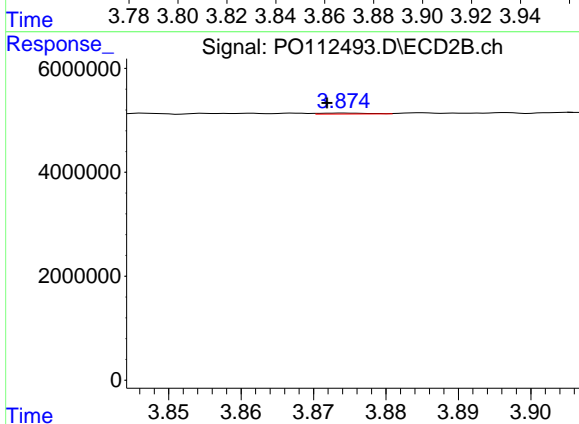
#7 AR-1016-5

R.T.: 5.183 min
 Delta R.T.: -0.003 min
 Response: 324410
 Conc: 2.26 ng/ml



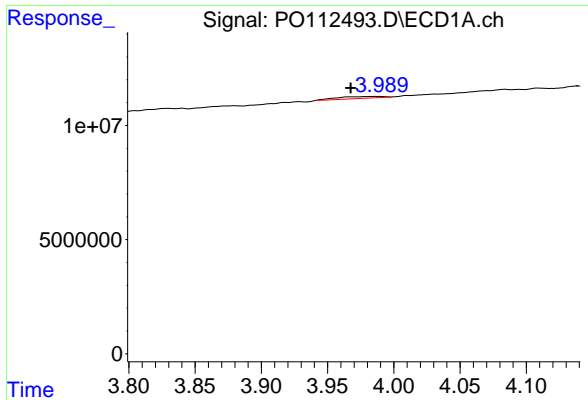
#8 AR-1221-1

R.T.: 3.880 min
 Delta R.T.: -0.002 min
 Response: 418220
 Conc: 4.33 ng/ml



#8 AR-1221-1

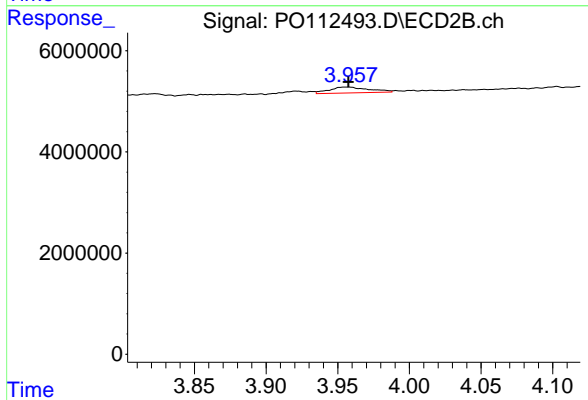
R.T.: 3.874 min
 Delta R.T.: 0.002 min
 Response: 82760
 Conc: 1.23 ng/ml



#9 AR-1221-2

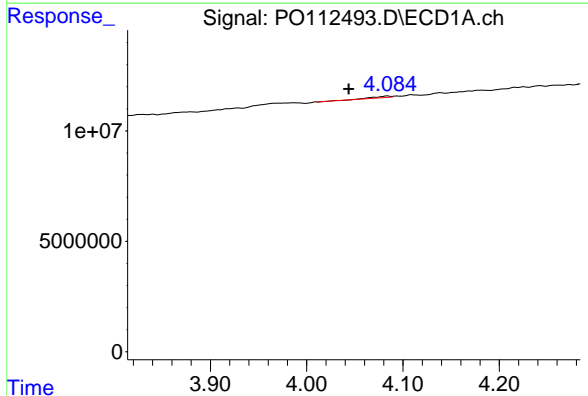
R.T.: 3.989 min
 Delta R.T.: 0.021 min
 Response: 2089132
 Conc: 29.07 ng/ml

Instrument :
 ECD_O
 ClientSampleId :
 COMP-4



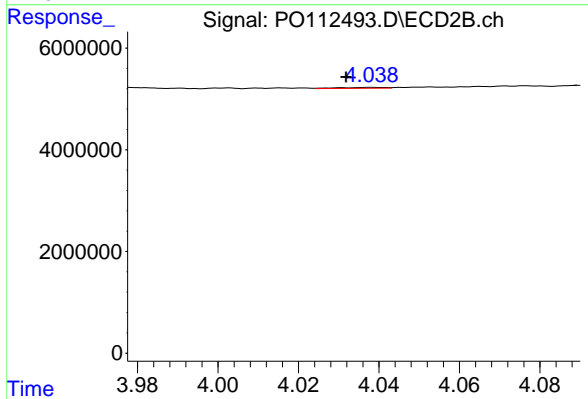
#9 AR-1221-2

R.T.: 3.958 min
 Delta R.T.: 0.000 min
 Response: 2266996
 Conc: 44.69 ng/ml



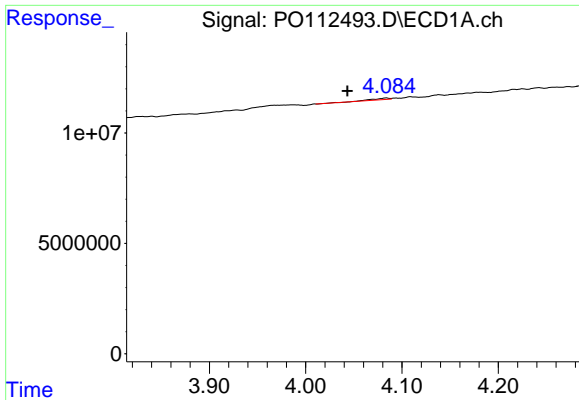
#10 AR-1221-3

R.T.: 4.084 min
 Delta R.T.: 0.040 min
 Response: 712237
 Conc: 3.00 ng/ml



#10 AR-1221-3

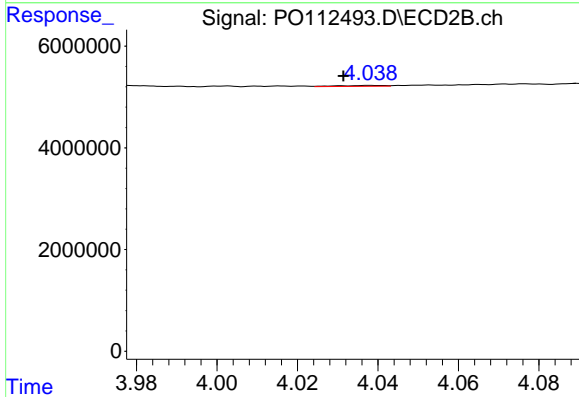
R.T.: 4.038 min
 Delta R.T.: 0.006 min
 Response: 152177
 Conc: 0.96 ng/ml



#11 AR-1232-1

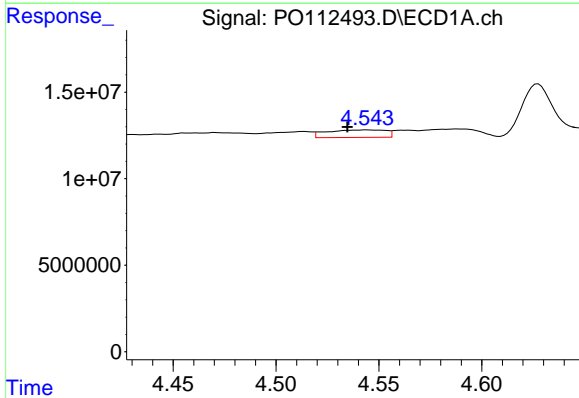
R.T.: 4.084 min
 Delta R.T.: 0.041 min
 Response: 712237
 Conc: 3.81 ng/ml

Instrument :
 ECD_O
 ClientSampleId :
 COMP-4



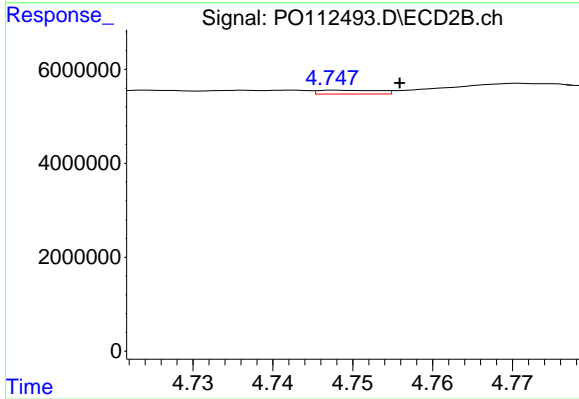
#11 AR-1232-1

R.T.: 4.038 min
 Delta R.T.: 0.007 min
 Response: 152177
 Conc: 1.20 ng/ml



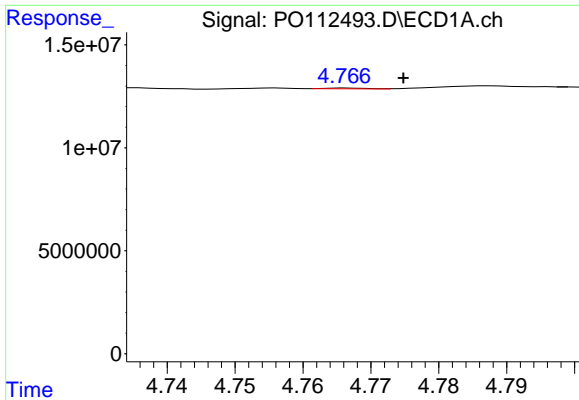
#12 AR-1232-2

R.T.: 4.544 min
 Delta R.T.: 0.009 min
 Response: 8649509
 Conc: 80.37 ng/ml



#12 AR-1232-2

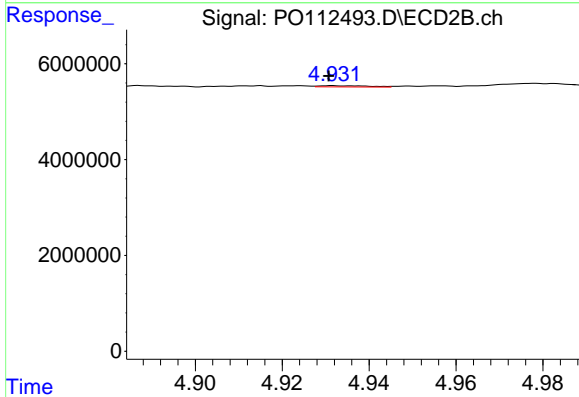
R.T.: 4.748 min
 Delta R.T.: -0.008 min
 Response: 435089
 Conc: 3.32 ng/ml



#13 AR-1232-3

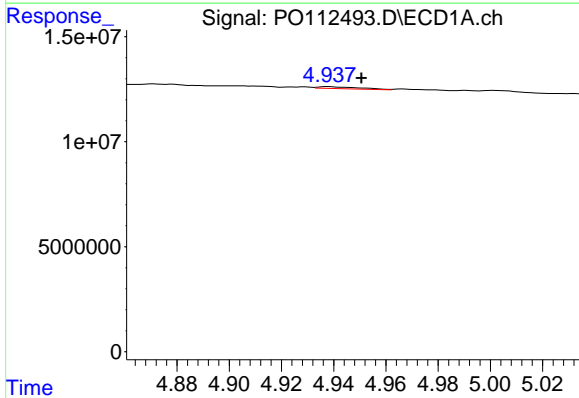
R.T.: 4.766 min
 Delta R.T.: -0.008 min
 Response: 152026
 Conc: 0.74 ng/ml

Instrument :
 ECD_O
 ClientSampleId :
 COMP-4



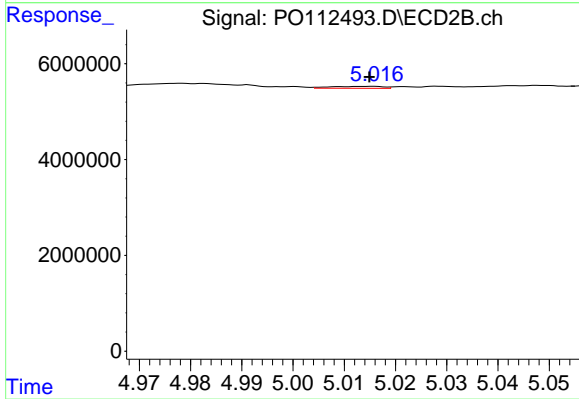
#13 AR-1232-3

R.T.: 4.932 min
 Delta R.T.: 0.000 min
 Response: 199690
 Conc: 2.97 ng/ml



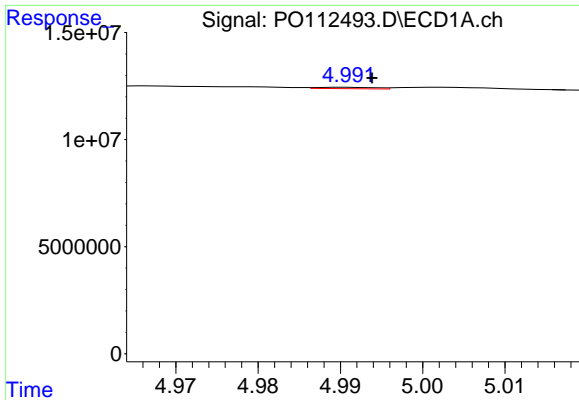
#14 AR-1232-4

R.T.: 4.938 min
 Delta R.T.: -0.013 min
 Response: 1028765
 Conc: 9.82 ng/ml



#14 AR-1232-4

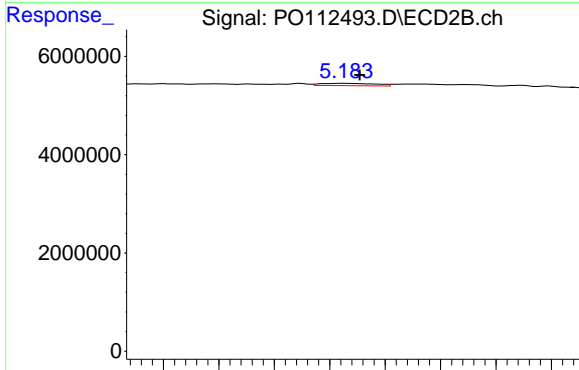
R.T.: 5.016 min
 Delta R.T.: 0.000 min
 Response: 295984
 Conc: 4.95 ng/ml



#15 AR-1232-5

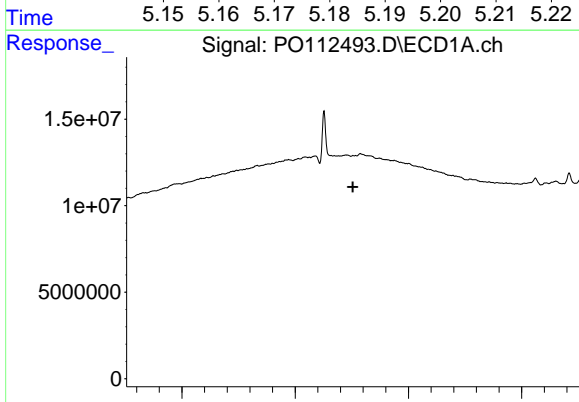
R.T.: 4.991 min
 Delta R.T.: -0.003 min
 Response: 331887
 Conc: 4.89 ng/ml

Instrument :
 ECD_O
 ClientSampleId :
 COMP-4



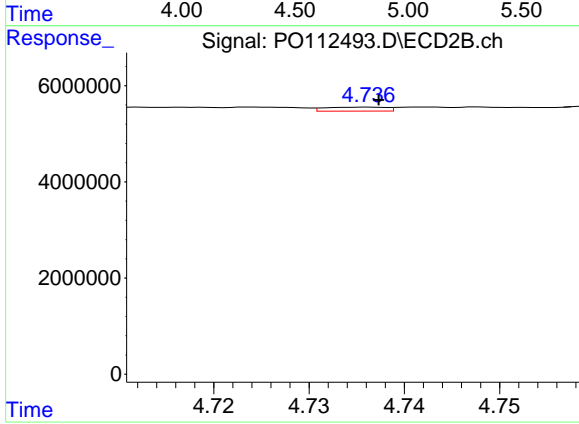
#15 AR-1232-5

R.T.: 5.183 min
 Delta R.T.: -0.003 min
 Response: 324410
 Conc: 4.98 ng/ml



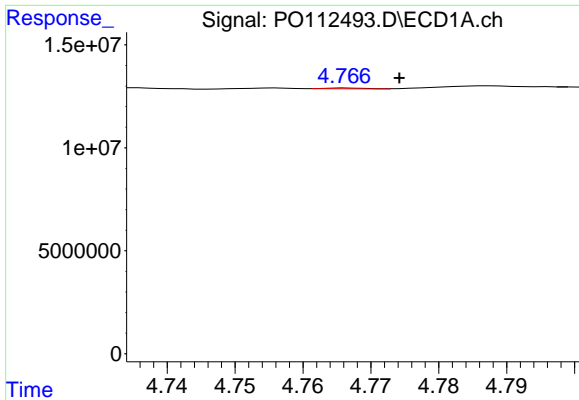
#16 AR-1242-1

R.T.: 4.756 min
 Delta R.T.: 0.000 min
 Response: -193849
 Conc: N.D.



#16 AR-1242-1

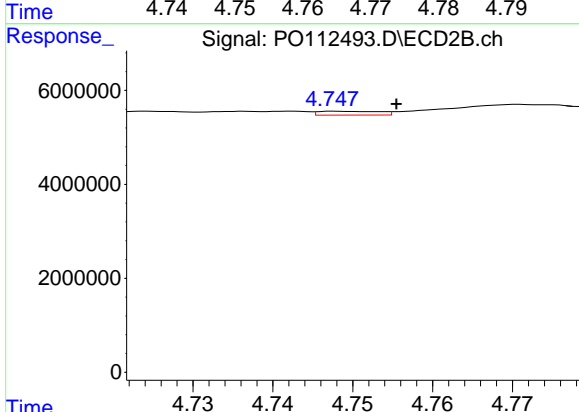
R.T.: 4.736 min
 Delta R.T.: 0.000 min
 Response: 373477
 Conc: 2.36 ng/ml



#17 AR-1242-2

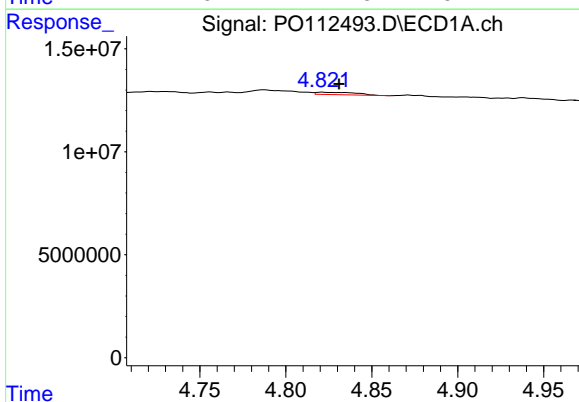
R.T.: 4.766 min
 Delta R.T.: -0.008 min
 Response: 152026
 Conc: 0.41 ng/ml

Instrument :
 ECD_O
 ClientSampleId :
 COMP-4



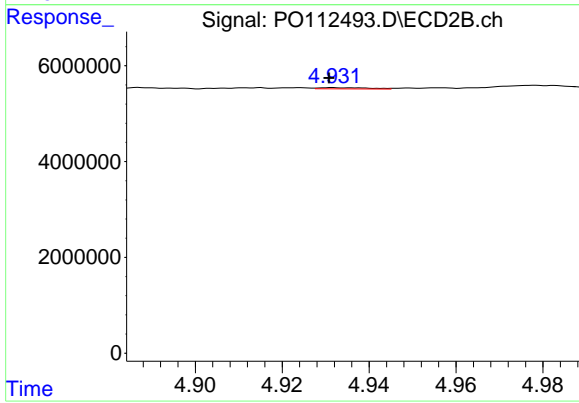
#17 AR-1242-2

R.T.: 4.748 min
 Delta R.T.: -0.008 min
 Response: 435089
 Conc: 1.86 ng/ml



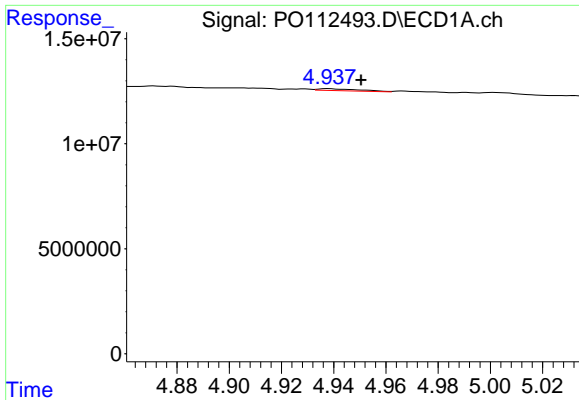
#18 AR-1242-3

R.T.: 4.821 min
 Delta R.T.: -0.010 min
 Response: 1918940
 Conc: 8.11 ng/ml



#18 AR-1242-3

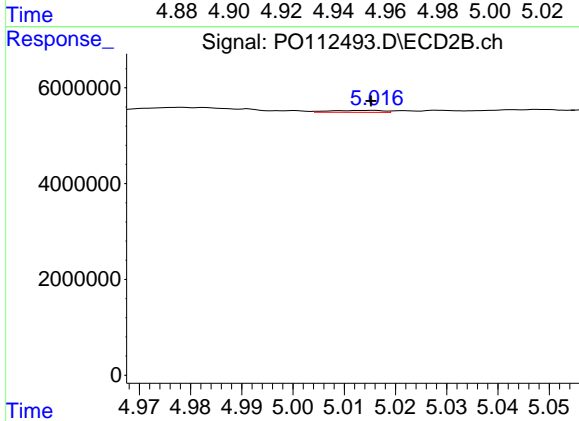
R.T.: 4.932 min
 Delta R.T.: 0.000 min
 Response: 199690
 Conc: 1.65 ng/ml



#19 AR-1242-4

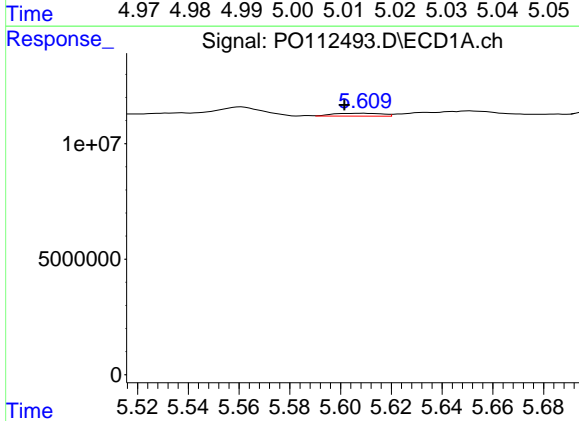
R.T.: 4.938 min
 Delta R.T.: -0.012 min
 Response: 1028765
 Conc: 5.30 ng/ml

Instrument :
 ECD_O
 ClientSampleId :
 COMP-4



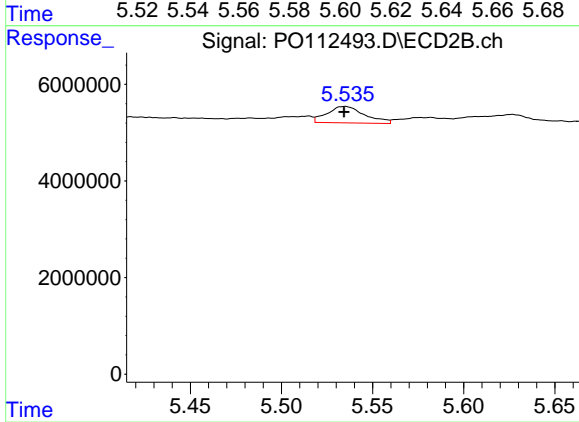
#19 AR-1242-4

R.T.: 5.016 min
 Delta R.T.: 0.000 min
 Response: 295984
 Conc: 2.41 ng/ml



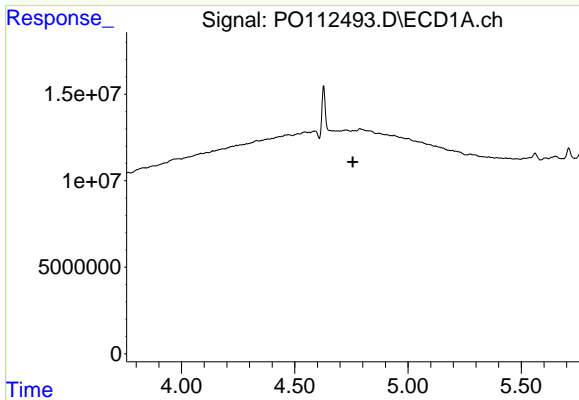
#20 AR-1242-5

R.T.: 5.609 min
 Delta R.T.: 0.007 min
 Response: 1698416
 Conc: 7.94 ng/ml



#20 AR-1242-5

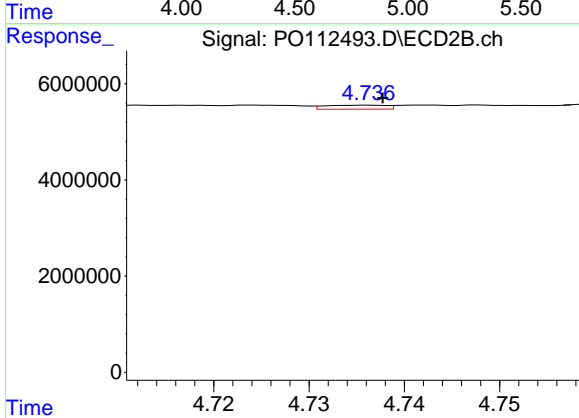
R.T.: 5.535 min
 Delta R.T.: 0.000 min
 Response: 4886413
 Conc: 30.36 ng/ml



#21 AR-1248-1

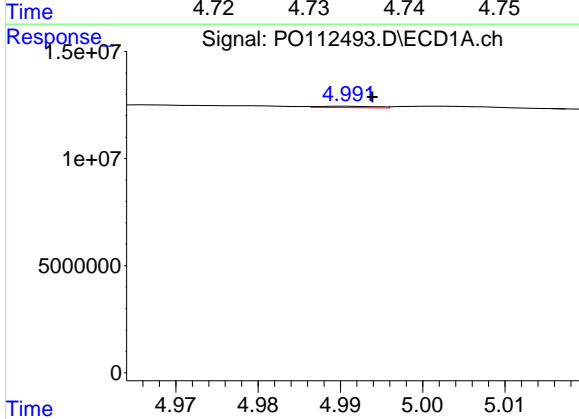
R.T.: 4.756 min
 Delta R.T.: 0.000 min
 Response: -193849
 Conc: N.D.

Instrument :
 ECD_O
 ClientSampleId :
 COMP-4



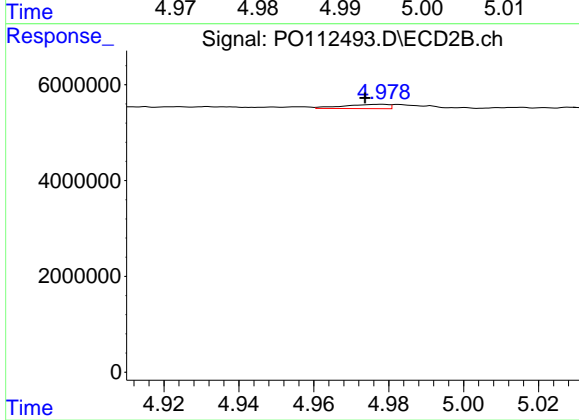
#21 AR-1248-1

R.T.: 4.736 min
 Delta R.T.: -0.001 min
 Response: 373477
 Conc: 3.07 ng/ml



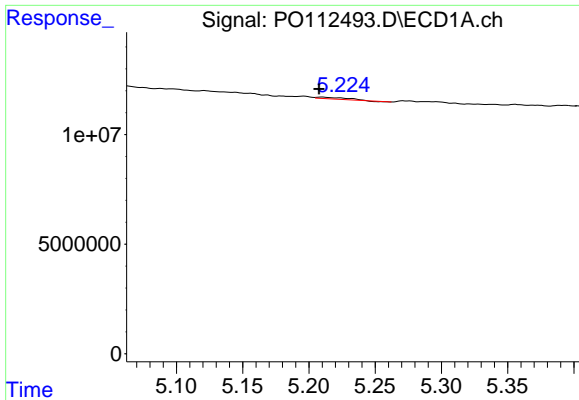
#22 AR-1248-2

R.T.: 4.991 min
 Delta R.T.: -0.003 min
 Response: 331887
 Conc: 1.30 ng/ml



#22 AR-1248-2

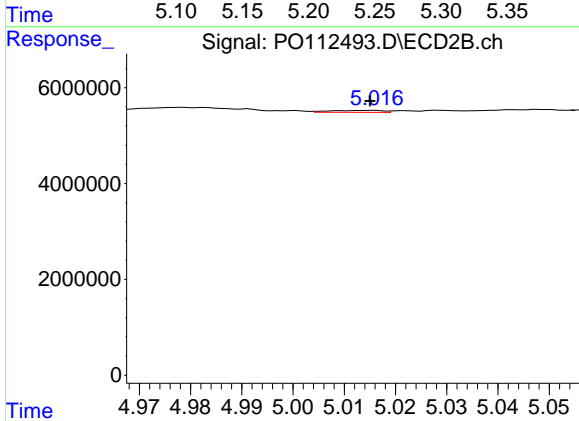
R.T.: 4.978 min
 Delta R.T.: 0.004 min
 Response: 744423
 Conc: 4.40 ng/ml



#23 AR-1248-3

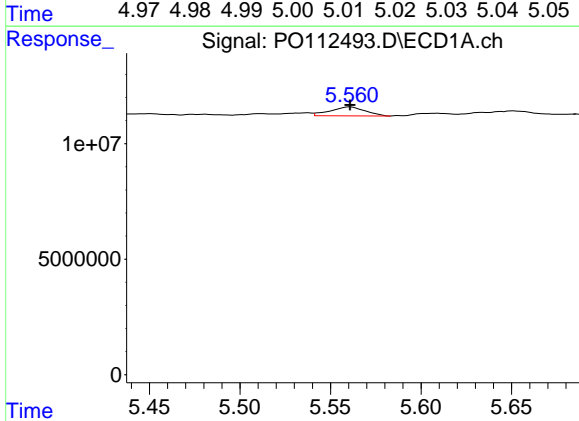
R.T.: 5.210 min
 Delta R.T.: 0.002 min
 Response: 1068990
 Conc: 3.11 ng/ml

Instrument :
 ECD_O
 ClientSampleId :
 COMP-4



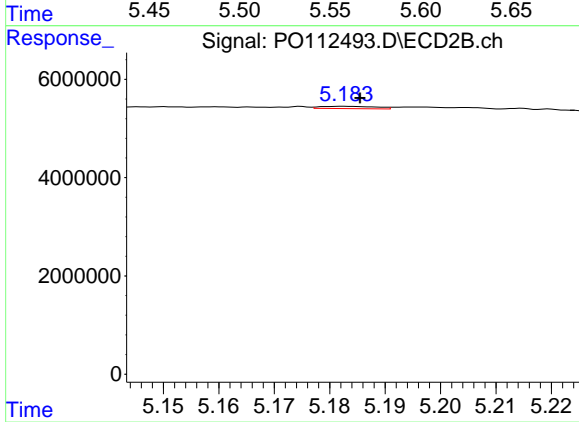
#23 AR-1248-3

R.T.: 5.016 min
 Delta R.T.: 0.000 min
 Response: 295984
 Conc: 1.67 ng/ml



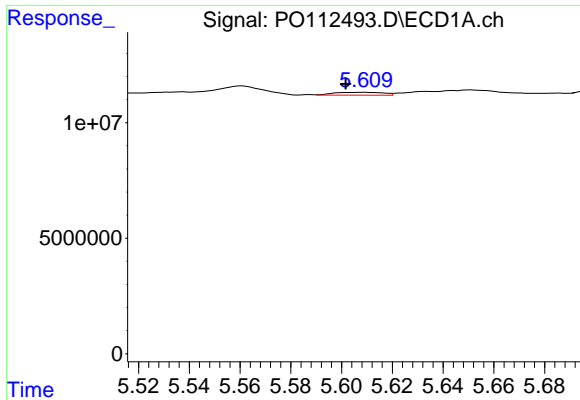
#24 AR-1248-4

R.T.: 5.561 min
 Delta R.T.: 0.000 min
 Response: 5174044
 Conc: 10.18 ng/ml



#24 AR-1248-4

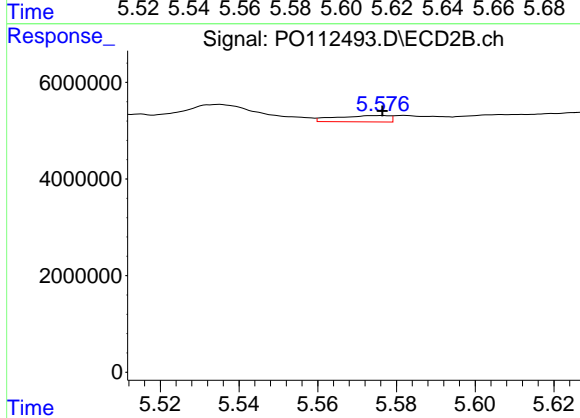
R.T.: 5.183 min
 Delta R.T.: -0.003 min
 Response: 324410
 Conc: 1.56 ng/ml



#25 AR-1248-5

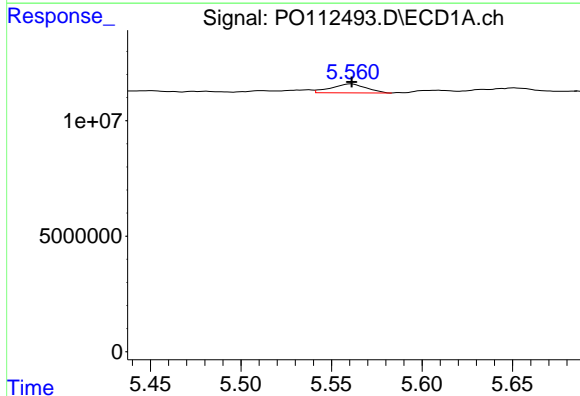
R.T.: 5.609 min
 Delta R.T.: 0.007 min
 Response: 1698416
 Conc: 4.86 ng/ml

Instrument :
 ECD_O
 ClientSampleId :
 COMP-4



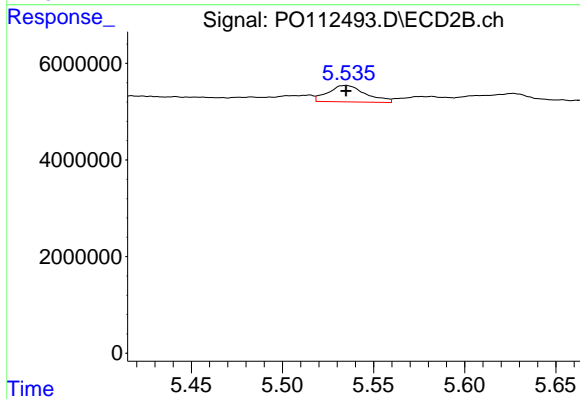
#25 AR-1248-5

R.T.: 5.576 min
 Delta R.T.: 0.000 min
 Response: 1217351
 Conc: 5.67 ng/ml



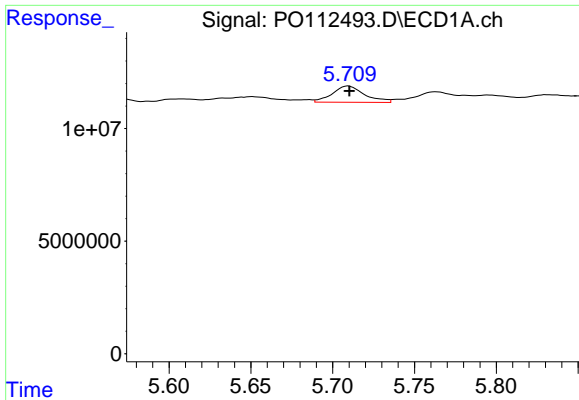
#26 AR-1254-1

R.T.: 5.561 min
 Delta R.T.: 0.000 min
 Response: 5174044
 Conc: 9.43 ng/ml



#26 AR-1254-1

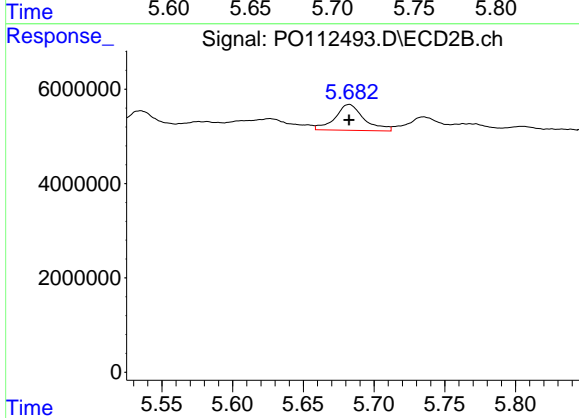
R.T.: 5.535 min
 Delta R.T.: 0.000 min
 Response: 4886413
 Conc: 14.87 ng/ml



#27 AR-1254-2

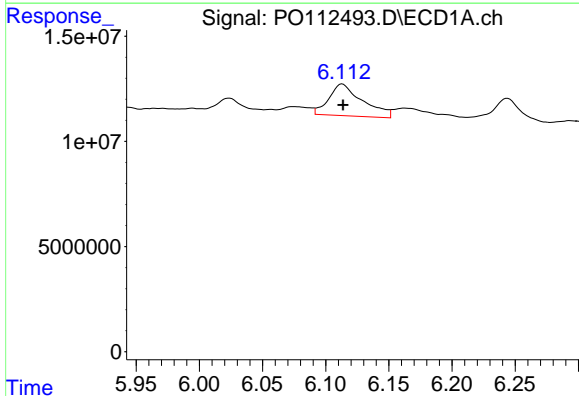
R.T.: 5.710 min
 Delta R.T.: 0.000 min
 Response: 9890482
 Conc: 20.35 ng/ml

Instrument :
 ECD_O
 ClientSampleId :
 COMP-4



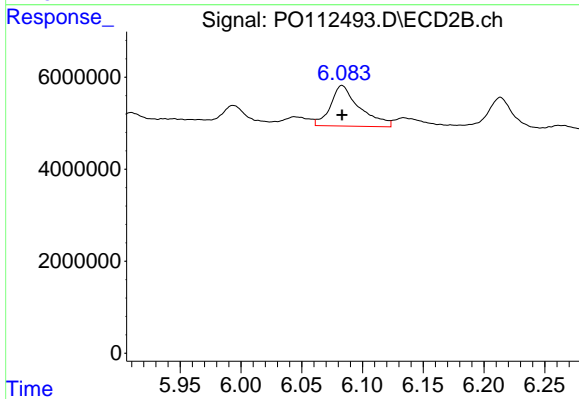
#27 AR-1254-2

R.T.: 5.683 min
 Delta R.T.: 0.000 min
 Response: 7884475
 Conc: 27.24 ng/ml



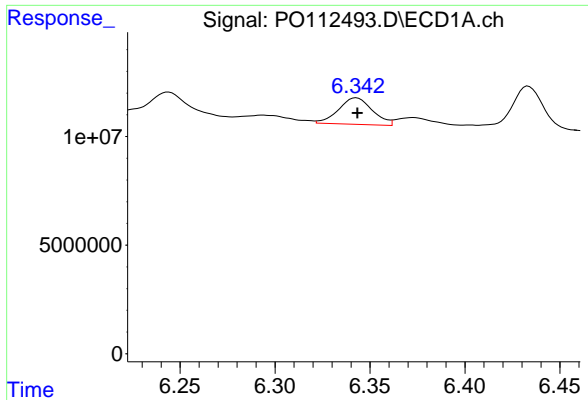
#28 AR-1254-3

R.T.: 6.113 min
 Delta R.T.: 0.000 min
 Response: 28088485
 Conc: 37.74 ng/ml



#28 AR-1254-3

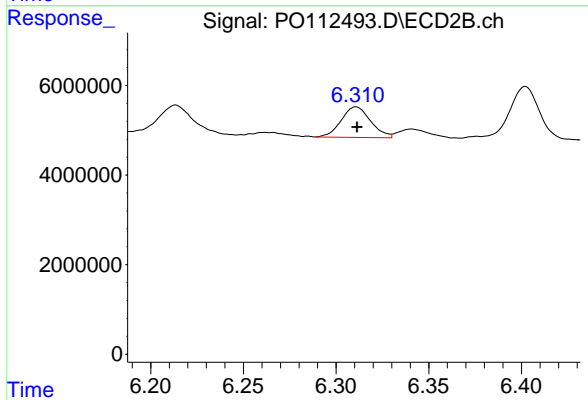
R.T.: 6.083 min
 Delta R.T.: 0.000 min
 Response: 14700760
 Conc: 34.39 ng/ml



#29 AR-1254-4

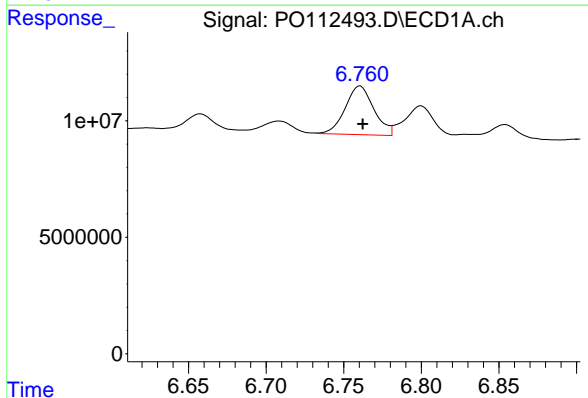
R.T.: 6.343 min
 Delta R.T.: 0.000 min
 Response: 15160708
 Conc: 27.58 ng/ml

Instrument :
 ECD_O
 ClientSampleId :
 COMP-4



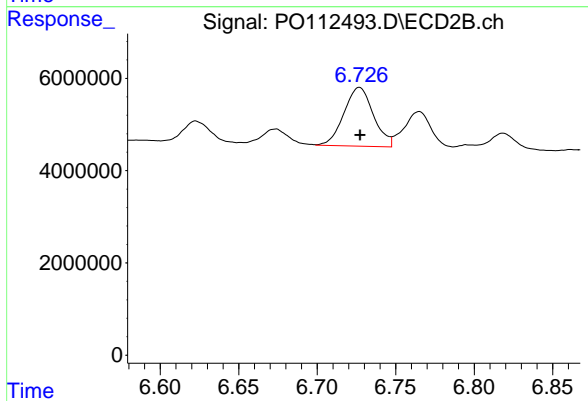
#29 AR-1254-4

R.T.: 6.311 min
 Delta R.T.: 0.000 min
 Response: 7574343
 Conc: 27.75 ng/ml



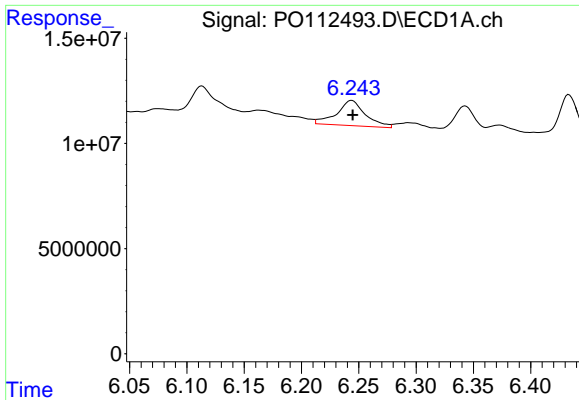
#30 AR-1254-5

R.T.: 6.761 min
 Delta R.T.: -0.002 min
 Response: 26816341
 Conc: 37.89 ng/ml



#30 AR-1254-5

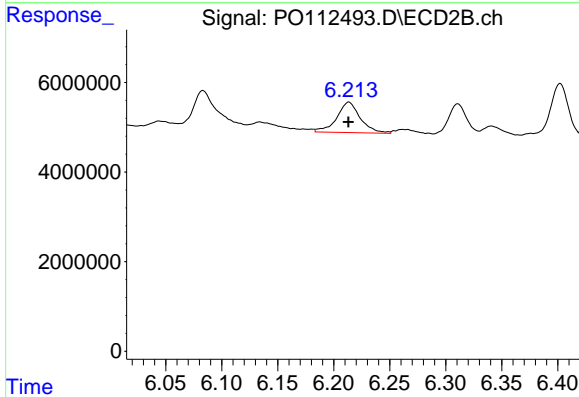
R.T.: 6.727 min
 Delta R.T.: 0.000 min
 Response: 16681067
 Conc: 49.94 ng/ml



#31 AR-1260-1

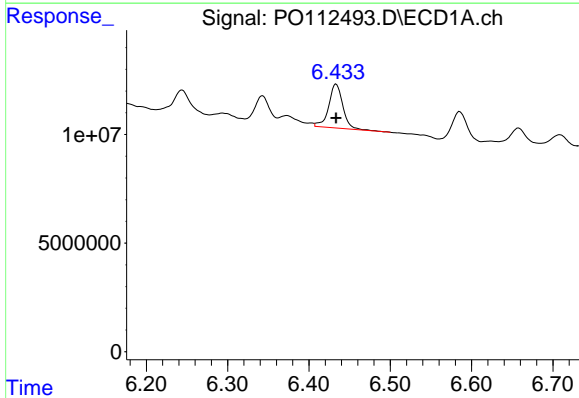
R.T.: 6.244 min
 Delta R.T.: 0.000 min
 Response: 20937373
 Conc: 47.66 ng/ml

Instrument :
 ECD_O
 ClientSampleId :
 COMP-4



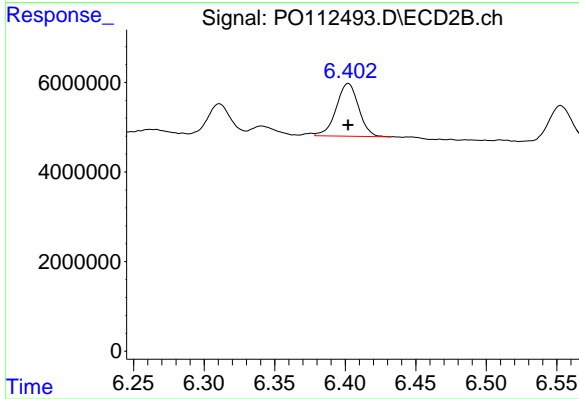
#31 AR-1260-1

R.T.: 6.214 min
 Delta R.T.: 0.000 min
 Response: 9966314
 Conc: 40.10 ng/ml



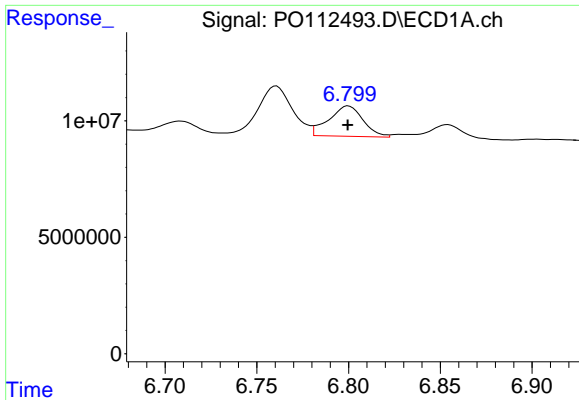
#32 AR-1260-2

R.T.: 6.433 min
 Delta R.T.: 0.000 min
 Response: 23899043
 Conc: 34.74 ng/ml



#32 AR-1260-2

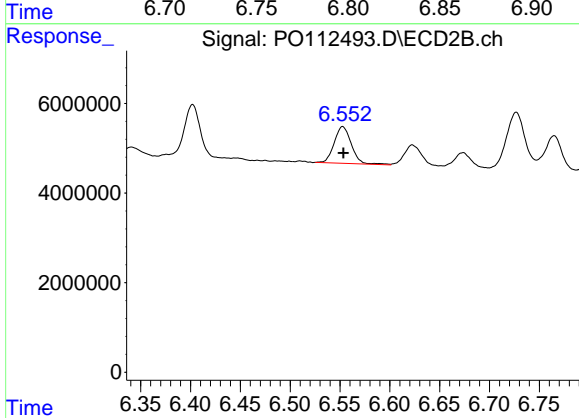
R.T.: 6.402 min
 Delta R.T.: 0.000 min
 Response: 13014129
 Conc: 39.50 ng/ml



#33 AR-1260-3

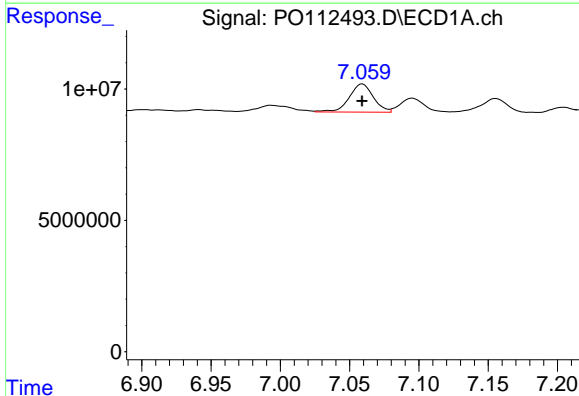
R.T.: 6.800 min
 Delta R.T.: 0.000 min
 Response: 16972368
 Conc: 28.86 ng/ml

Instrument :
 ECD_O
 ClientSampleId :
 COMP-4



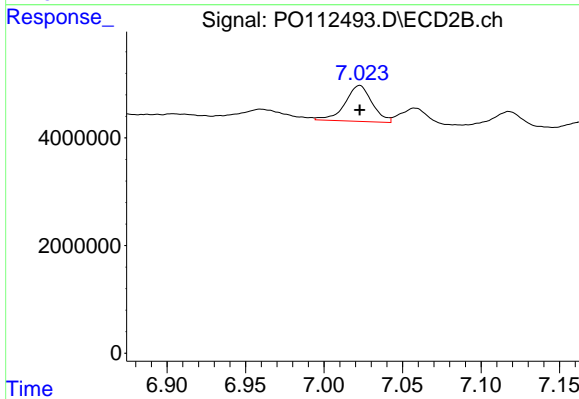
#33 AR-1260-3

R.T.: 6.553 min
 Delta R.T.: 0.000 min
 Response: 9893104
 Conc: 38.51 ng/ml



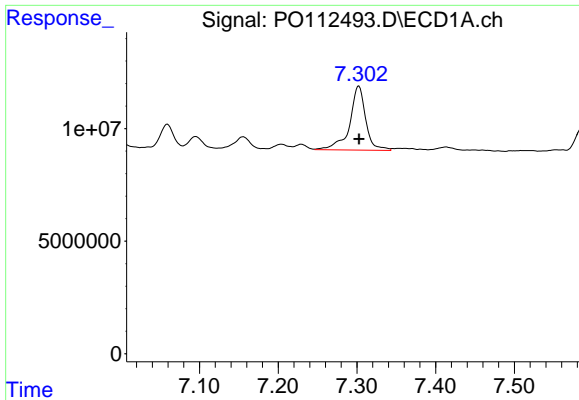
#34 AR-1260-4

R.T.: 7.059 min
 Delta R.T.: 0.000 min
 Response: 13042580
 Conc: 28.92 ng/ml



#34 AR-1260-4

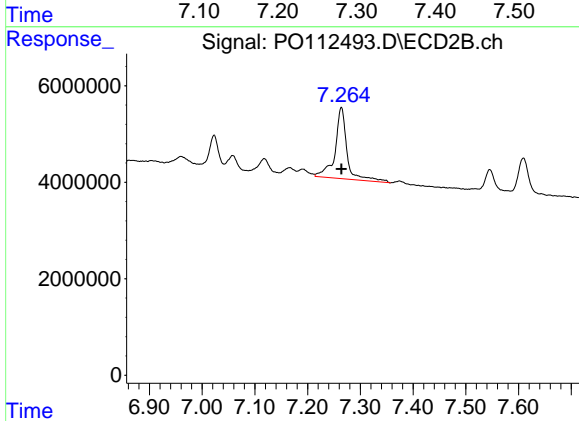
R.T.: 7.023 min
 Delta R.T.: 0.000 min
 Response: 7976344
 Conc: 41.69 ng/ml



#35 AR-1260-5

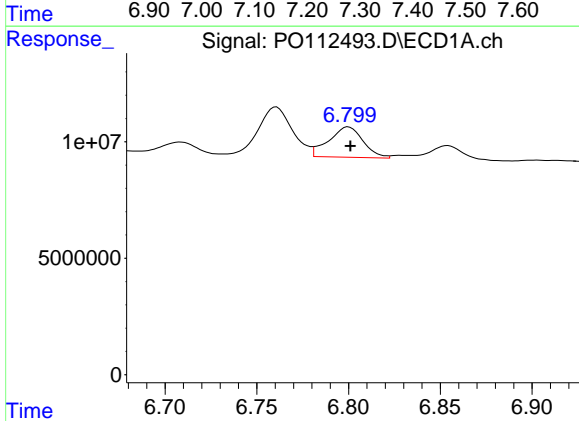
R.T.: 7.302 min
 Delta R.T.: 0.000 min
 Response: 40328663
 Conc: 32.55 ng/ml

Instrument :
 ECD_O
 ClientSampleId :
 COMP-4



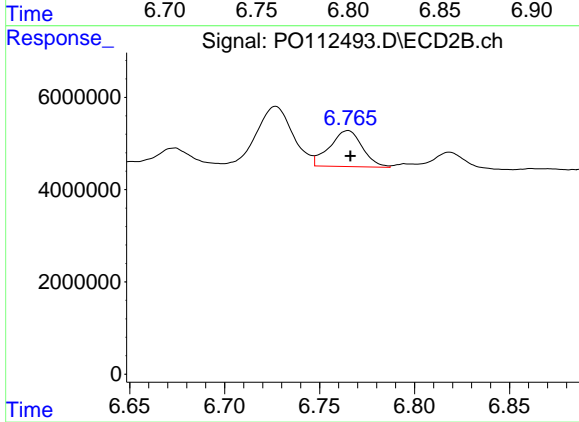
#35 AR-1260-5

R.T.: 7.264 min
 Delta R.T.: 0.000 min
 Response: 23319957
 Conc: 56.58 ng/ml



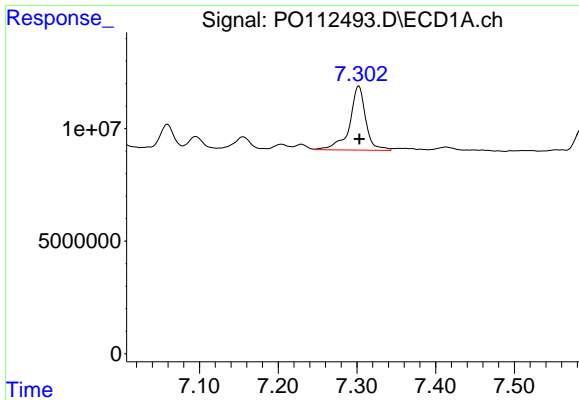
#36 AR-1262-1

R.T.: 6.800 min
 Delta R.T.: -0.001 min
 Response: 16972368
 Conc: 18.27 ng/ml



#36 AR-1262-1

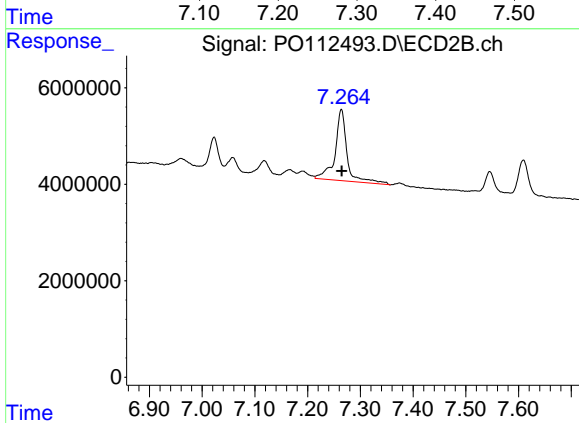
R.T.: 6.765 min
 Delta R.T.: -0.001 min
 Response: 9371283
 Conc: 22.59 ng/ml



#37 AR-1262-2

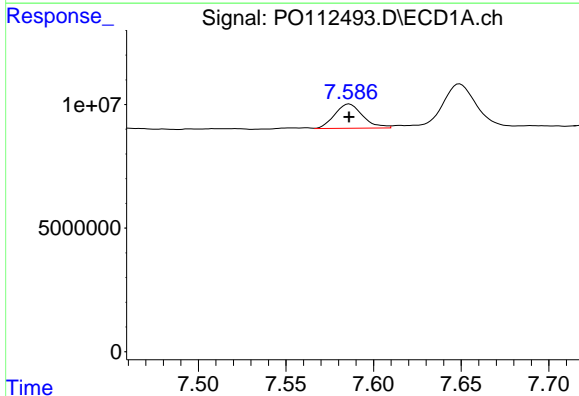
R.T.: 7.302 min
 Delta R.T.: 0.000 min
 Response: 40328663
 Conc: 27.12 ng/ml

Instrument :
 ECD_O
 ClientSampleId :
 COMP-4



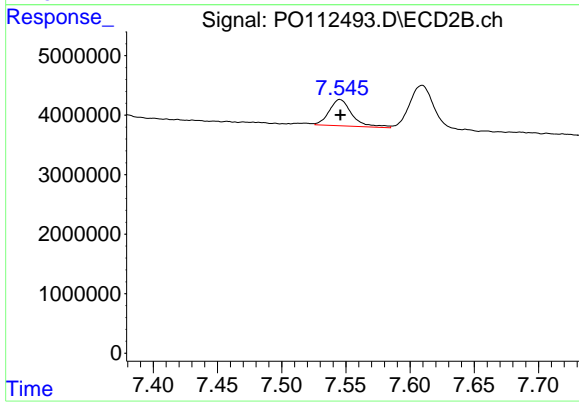
#37 AR-1262-2

R.T.: 7.264 min
 Delta R.T.: -0.001 min
 Response: 23319957
 Conc: 45.23 ng/ml



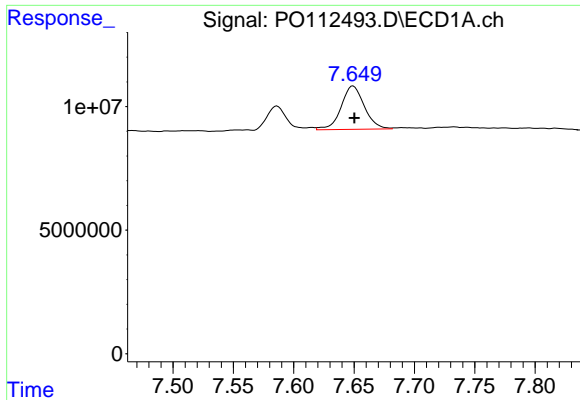
#38 AR-1262-3

R.T.: 7.586 min
 Delta R.T.: 0.000 min
 Response: 10945556
 Conc: 18.54 ng/ml



#38 AR-1262-3

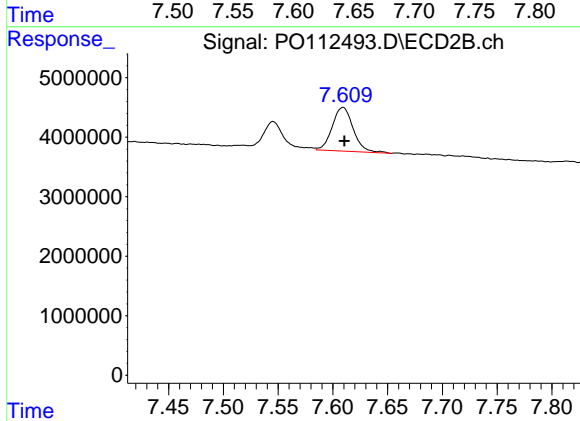
R.T.: 7.545 min
 Delta R.T.: 0.000 min
 Response: 5472826
 Conc: 29.34 ng/ml



#39 AR-1262-4

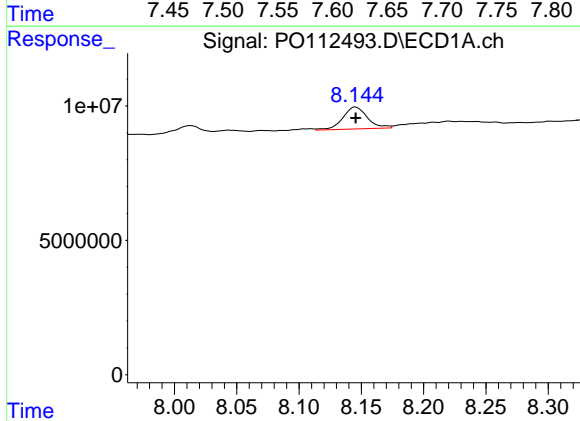
R.T.: 7.649 min
 Delta R.T.: -0.001 min
 Response: 23472629
 Conc: 23.61 ng/ml

Instrument :
 ECD_O
 ClientSampleId :
 COMP-4



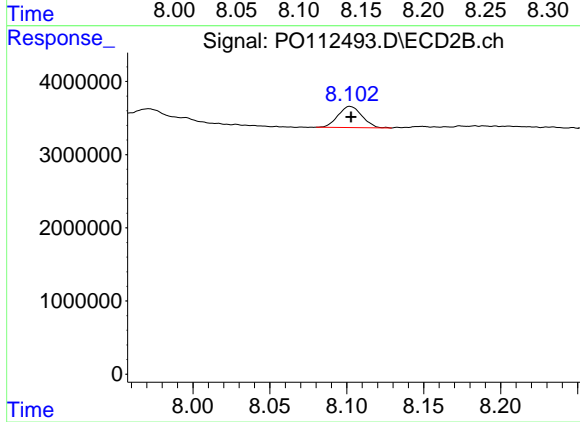
#39 AR-1262-4

R.T.: 7.609 min
 Delta R.T.: -0.001 min
 Response: 9858747
 Conc: 34.22 ng/ml



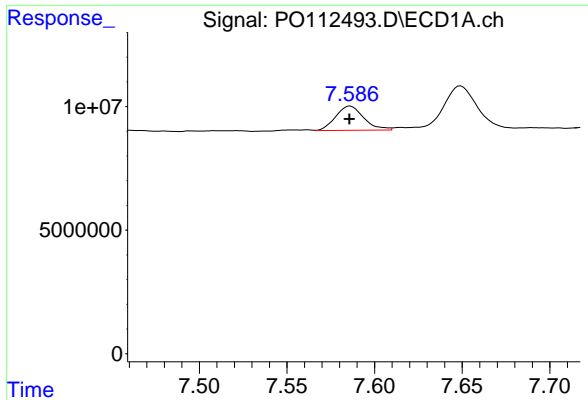
#40 AR-1262-5

R.T.: 8.145 min
 Delta R.T.: 0.000 min
 Response: 11259379
 Conc: 25.94 ng/ml



#40 AR-1262-5

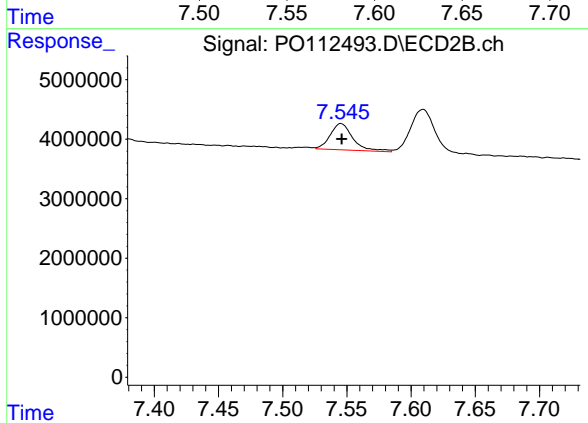
R.T.: 8.102 min
 Delta R.T.: 0.000 min
 Response: 3116786
 Conc: 31.32 ng/ml



#41 AR-1268-1

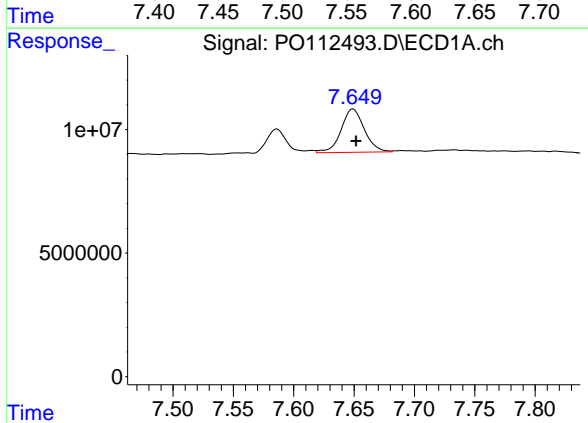
R.T.: 7.586 min
 Delta R.T.: 0.000 min
 Response: 10945556
 Conc: 6.25 ng/ml

Instrument :
 ECD_O
 ClientSampleId :
 COMP-4



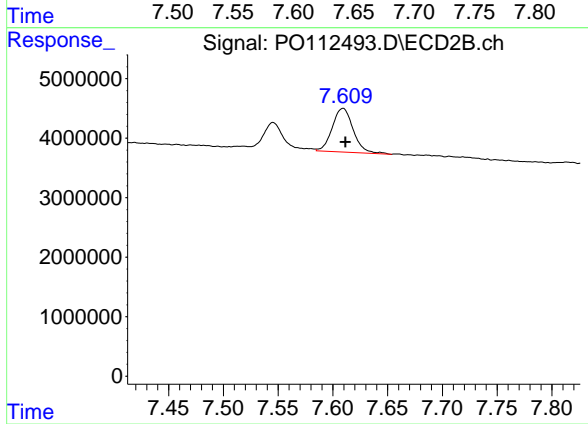
#41 AR-1268-1

R.T.: 7.545 min
 Delta R.T.: 0.000 min
 Response: 5472826
 Conc: 10.57 ng/ml



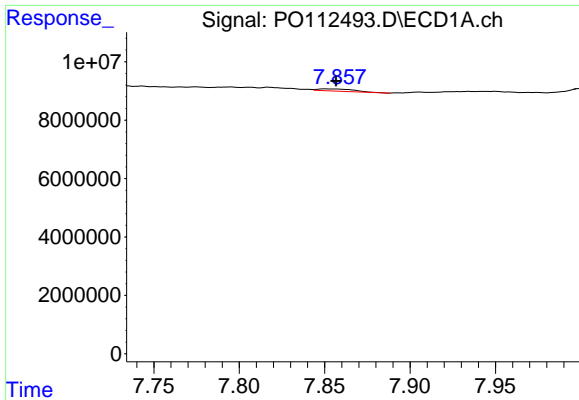
#42 AR-1268-2

R.T.: 7.649 min
 Delta R.T.: -0.003 min
 Response: 23472629
 Conc: 15.93 ng/ml



#42 AR-1268-2

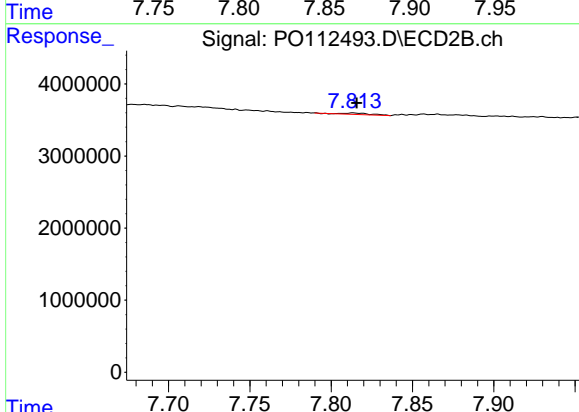
R.T.: 7.609 min
 Delta R.T.: -0.002 min
 Response: 9858747
 Conc: 23.19 ng/ml



#43 AR-1268-3

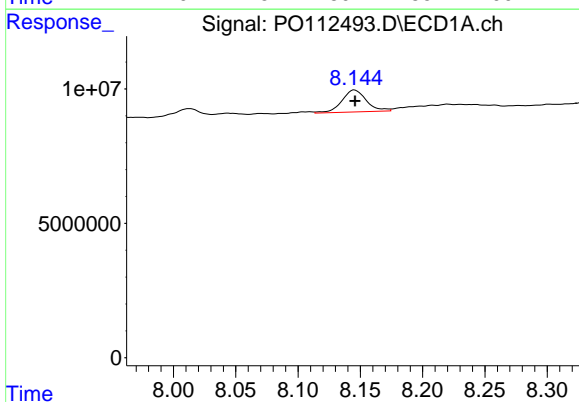
R.T.: 7.851 min
 Delta R.T.: -0.006 min
 Response: 1063824
 Conc: 0.85 ng/ml

Instrument :
 ECD_O
 ClientSampleId :
 COMP-4



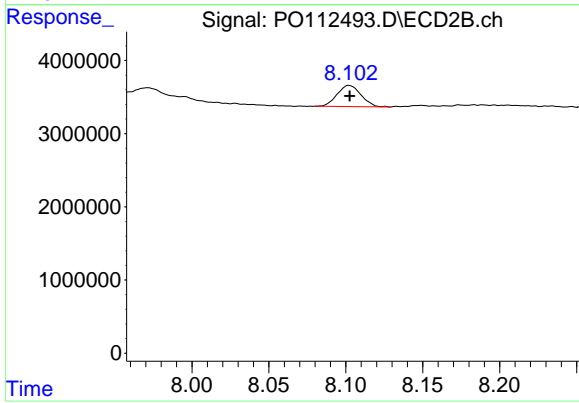
#43 AR-1268-3

R.T.: 7.813 min
 Delta R.T.: -0.002 min
 Response: 233592
 Conc: 0.73 ng/ml



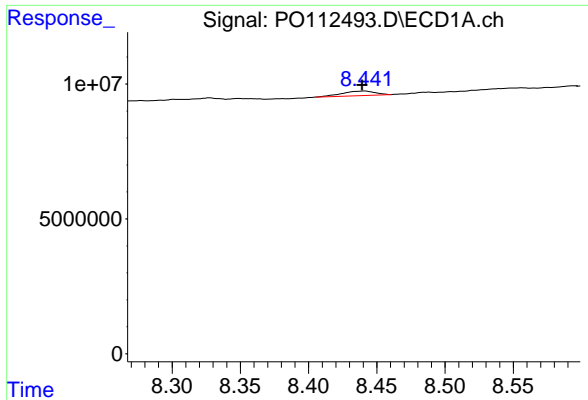
#44 AR-1268-4

R.T.: 8.145 min
 Delta R.T.: 0.000 min
 Response: 11259379
 Conc: 23.37 ng/ml



#44 AR-1268-4

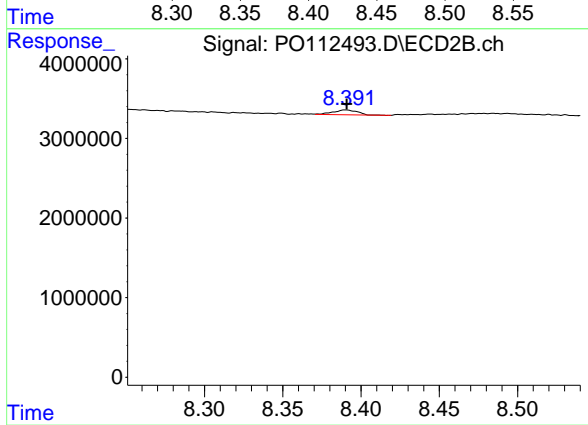
R.T.: 8.102 min
 Delta R.T.: 0.000 min
 Response: 3116786
 Conc: 28.00 ng/ml



#45 AR-1268-5

R.T.: 8.441 min
 Delta R.T.: 0.002 min
 Response: 2877372
 Conc: 0.86 ng/ml

Instrument :
 ECD_O
 ClientSampleId :
 COMP-4



#45 AR-1268-5

R.T.: 8.390 min
 Delta R.T.: 0.000 min
 Response: 644300
 Conc: 0.88 ng/ml