

Data Path : Z:\pestpcbsrv\HPCHEM1\ECD_0\Data\P0072425\
 Data File : PO112494.D
 Signal(s) : Signal #1: ECD1A.ch Signal #2: ECD2B.ch
 Acq On : 25 Jul 2025 05:52
 Operator : YP/AJ
 Sample : AR1660CCC500
 Misc :
 ALS Vial : 3 Sample Multiplier: 1

Instrument :
 ECD_0
 ClientSampleId :
 AR1660CCC500

Integration File signal 1: autoint1.e
 Integration File signal 2: autoint2.e
 Quant Time: Jul 25 06:29:46 2025
 Quant Method : Z:\pestpcbsrv\HPCHEM1\ECD_0\methods\P0072325.M
 Quant Title : GC EXTRACTABLES
 QLast Update : Thu Jul 24 04:54:06 2025
 Response via : Initial Calibration
 Integrator: ChemStation

Volume Inj. : 2 µl
 Signal #1 Phase : ZB-MR1 Signal #2 Phase: ZB-MR2
 Signal #1 Info : 30Mx0.32mmx 0.50µ Signal #2 Info : 30M x 0.32mm x 0.25µm

Compound	RT#1	RT#2	Resp#1	Resp#2	ng/ml	ng/ml
System Monitoring Compounds						
1) SA Tetrachlo...	3.669	3.663	463.4E6	274.0E6	56.985	55.144
2) SA Decachlor...	8.694	8.641	244.7E6	75264386	33.465	42.592 #
Target Compounds						
3) L1 AR-1016-1	4.754	4.738	151.7E6	93047876	565.378	531.681
4) L1 AR-1016-2	4.773	4.756	227.5E6	137.7E6	560.270	528.680
5) L1 AR-1016-3	4.830	4.931	143.8E6	73082739	549.368	537.506
6) L1 AR-1016-4	4.950	4.973	116.8E6	57912008	551.373	521.332
7) L1 AR-1016-5	5.207	5.185	149.6E6	83570698	681.774	583.175
8) L2 AR-1221-1	3.879	3.870	12671592	9279232	131.095	137.949
9) L2 AR-1221-2	3.967	3.957	20416793	13925432	284.111	274.512
10) L2 AR-1221-3	4.041	4.032	76140518	50056266	320.307	315.754
11) L3 AR-1232-1	4.041	4.032	76140518	50056266	407.215	395.546
12) L3 AR-1232-2	4.534	4.756	113.1E6	137.7E6	1050.616	1050.046
13) L3 AR-1232-3	4.773	4.931	227.5E6	73082739	1100.272	1087.592
14) L3 AR-1232-4	4.950	5.015	116.8E6	72787573	1115.175	1216.592
15) L3 AR-1232-5	4.992	5.185	83800293	83570698	1234.520	1281.699
16) L4 AR-1242-1	4.754	4.738	151.7E6	93047876	612.815	587.446
17) L4 AR-1242-2	4.773	4.756	227.5E6	137.7E6	615.304	589.381
18) L4 AR-1242-3	4.830	4.931	143.8E6	73082739	607.439	603.047
19) L4 AR-1242-4	4.950	5.015	116.8E6	72787573	601.218	593.025
20) L4 AR-1242-5	5.601	5.535	59622340	86696557	278.719	538.584 #
21) L5 AR-1248-1	4.754	4.738	151.7E6	93047876	810.476	765.767
22) L5 AR-1248-2	4.992	4.973	83800293	57912008	328.484	342.108
23) L5 AR-1248-3	5.207	5.015	149.6E6	72787573	435.347	409.731
24) L5 AR-1248-4	5.560	5.185	162.3E6	83570698	319.503	401.099 #
25) L5 AR-1248-5	5.601	5.575	59622340	28882862	170.549	134.486
26) L6 AR-1254-1	5.560	5.535	162.3E6	86696557	295.710	263.819
27) L6 AR-1254-2	5.709	5.682	136.0E6	69600146	279.873	240.423
28) L6 AR-1254-3	6.129	6.098	134.9E6	101.5E6	181.281	237.396 #
29) L6 AR-1254-4	6.342	6.311	16746995	13319628	30.465	48.796 #
30) L6 AR-1254-5	6.761	6.727	345.6E6	130.6E6	488.208	390.934
31) L7 AR-1260-1	6.244	6.213	161.0E6	119.5E6	366.484	481.022 #
32) L7 AR-1260-2	6.433	6.402	249.4E6	145.8E6	362.487	442.419
33) L7 AR-1260-3	6.800	6.553	349.4E6	115.5E6	594.191	449.418
34) L7 AR-1260-4	7.058	7.023	211.5E6	82265475	468.901	430.010
35) L7 AR-1260-5	7.302	7.265	442.3E6	180.3E6	356.920	437.427
36) L8 AR-1262-1	6.800	6.765	349.4E6	120.8E6	376.015	291.217
37) L8 AR-1262-2	7.302	7.265	442.3E6	180.3E6	297.423	349.736
38) L8 AR-1262-3	7.587	7.546	96441811	40330511	163.391	216.220 #
39) L8 AR-1262-4	7.649	7.609	268.0E6	99432179	269.603	345.127 #
40) L8 AR-1262-5	8.146	8.102	90908275	28463025	209.437	286.051 #
41) L9 AR-1268-1	7.587	7.546	96441811	40330511	55.074	77.879 #

Data Path : Z:\pestpcbsrv\HPCHEM1\ECD_0\Data\P0072425\
 Data File : P0112494.D
 Signal(s) : Signal #1: ECD1A.ch Signal #2: ECD2B.ch
 Acq On : 25 Jul 2025 05:52
 Operator : YP/AJ
 Sample : AR1660CCC500
 Misc :
 ALS Vial : 3 Sample Multiplier: 1

Instrument :
 ECD_0
 ClientSampleId :
 AR1660CCC500

Integration File signal 1: autoint1.e
 Integration File signal 2: autoint2.e
 Quant Time: Jul 25 06:29:46 2025
 Quant Method : Z:\pestpcbsrv\HPCHEM1\ECD_0\methods\P0072325.M
 Quant Title : GC EXTRACTABLES
 QLast Update : Thu Jul 24 04:54:06 2025
 Response via : Initial Calibration
 Integrator: ChemStation

Volume Inj. : 2 µl
 Signal #1 Phase : ZB-MR1 Signal #2 Phase: ZB-MR2
 Signal #1 Info : 30Mx0.32mmx 0.50µ Signal #2 Info : 30M x 0.32mm x 0.25µm

	Compound	RT#1	RT#2	Resp#1	Resp#2	ng/ml	ng/ml
42)	L9 AR-1268-2	7.649	7.609	268.0E6	99432179	181.959	233.923 #
43)	L9 AR-1268-3	7.856	7.815	3649662	1522072	2.915	4.738 #
44)	L9 AR-1268-4	8.146	8.102	90908275	28463025	188.660	255.743 #
45)	L9 AR-1268-5	8.440	8.391	20753984	7294847	6.182	9.969 #

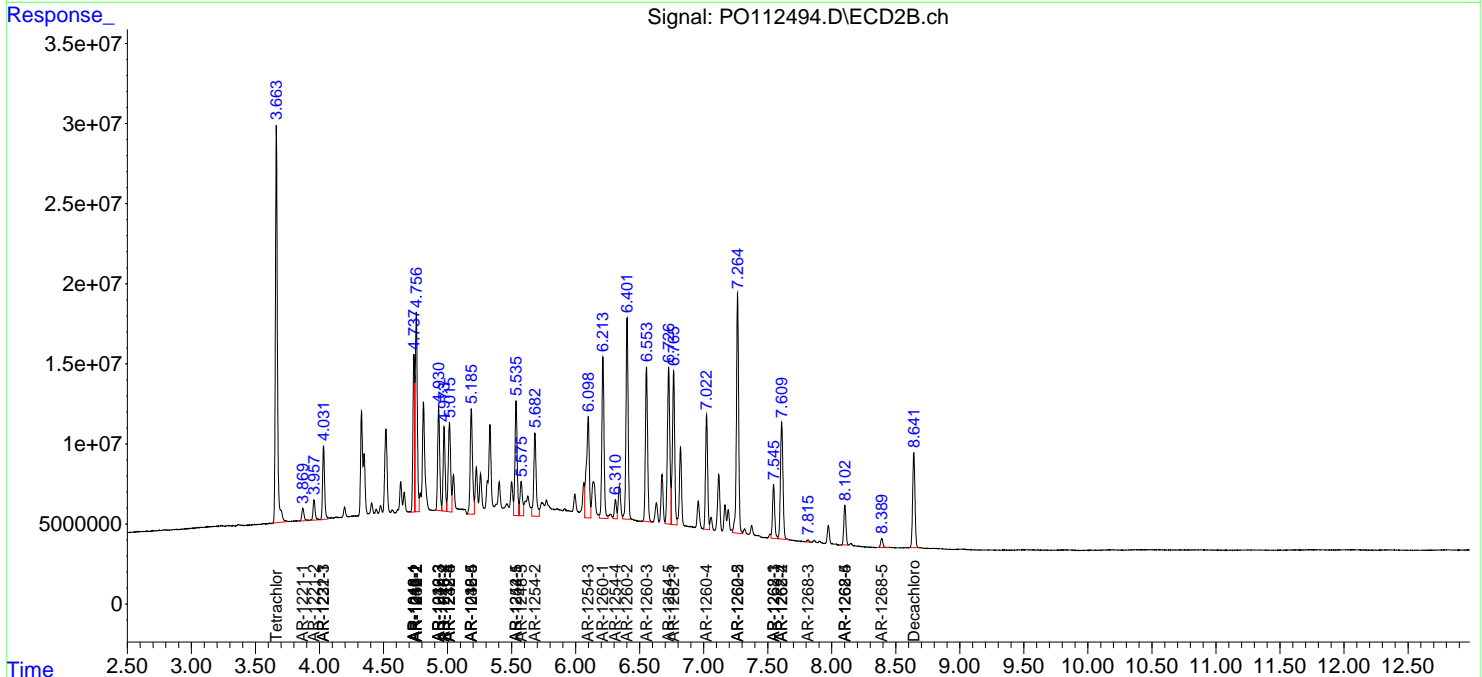
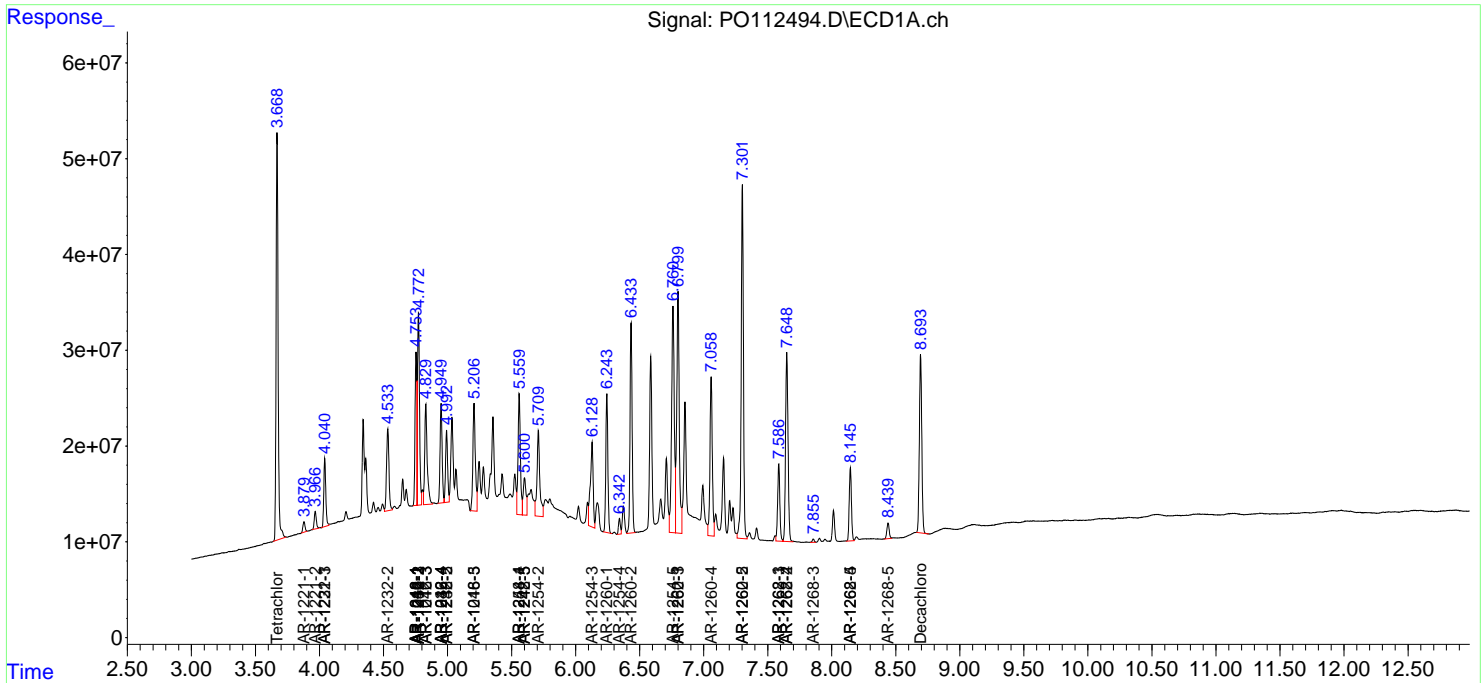
(f)=RT Delta > 1/2 Window (#)=Amounts differ by > 25% (m)=manual int.

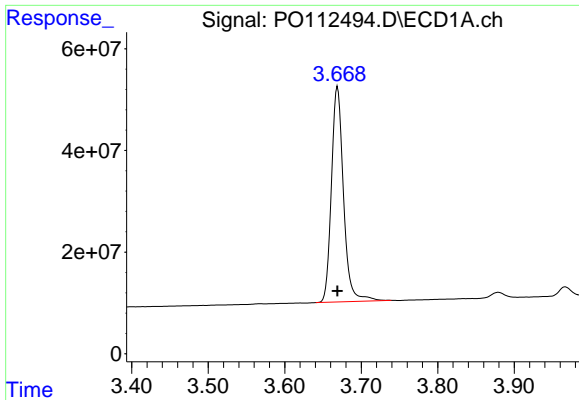
Data Path : Z:\pestpcbsrv\HPCHEM1\ECD_O\Data\PO072425\
 Data File : PO112494.D
 Signal(s) : Signal #1: ECD1A.ch Signal #2: ECD2B.ch
 Acq On : 25 Jul 2025 05:52
 Operator : YP/AJ
 Sample : AR1660CCC500
 Misc :
 ALS Vial : 3 Sample Multiplier: 1

Instrument :
 ECD_O
 ClientSampleId :
 AR1660CCC500

Integration File signal 1: autoint1.e
 Integration File signal 2: autoint2.e
 Quant Time: Jul 25 06:29:46 2025
 Quant Method : Z:\pestpcbsrv\HPCHEM1\ECD_O\methods\PO072325.M
 Quant Title : GC EXTRACTABLES
 QLast Update : Thu Jul 24 04:54:06 2025
 Response via : Initial Calibration
 Integrator: ChemStation

Volume Inj. : 2 µl
 Signal #1 Phase : ZB-MR1 Signal #2 Phase: ZB-MR2
 Signal #1 Info : 30Mx0.32mmx 0.50µ Signal #2 Info : 30M x 0.32mm x 0.25µm

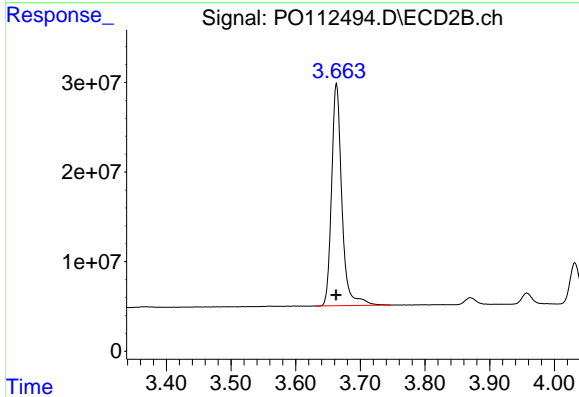




#1 Tetrachloro-m-xylene

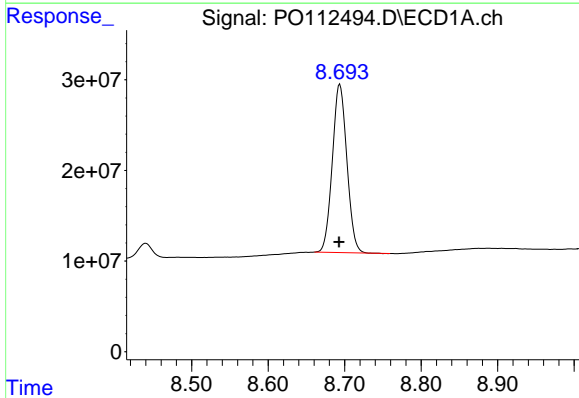
R.T.: 3.669 min
 Delta R.T.: 0.000 min
 Response: 463374878
 Conc: 56.98 ng/ml

Instrument :
 ECD_O
 ClientSampleId :
 AR1660CCC500



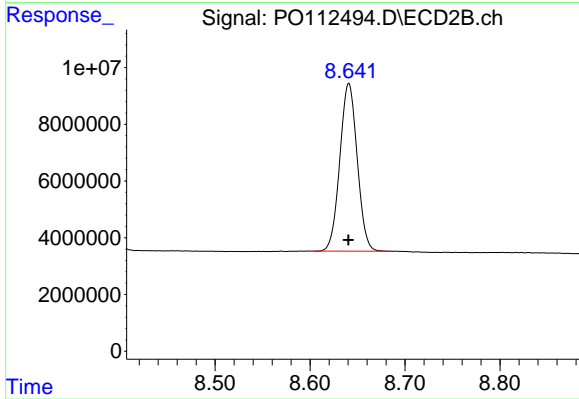
#1 Tetrachloro-m-xylene

R.T.: 3.663 min
 Delta R.T.: 0.000 min
 Response: 274018787
 Conc: 55.14 ng/ml



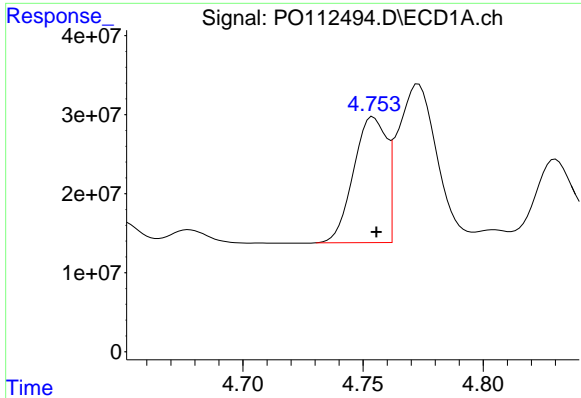
#2 Decachlorobiphenyl

R.T.: 8.694 min
 Delta R.T.: 0.000 min
 Response: 244691093
 Conc: 33.47 ng/ml



#2 Decachlorobiphenyl

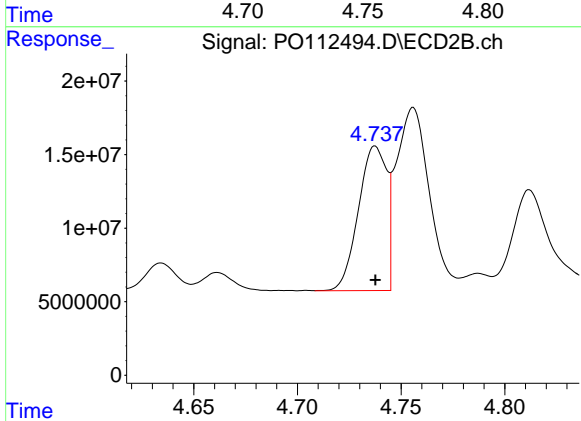
R.T.: 8.641 min
 Delta R.T.: 0.000 min
 Response: 75264386
 Conc: 42.59 ng/ml



#3 AR-1016-1

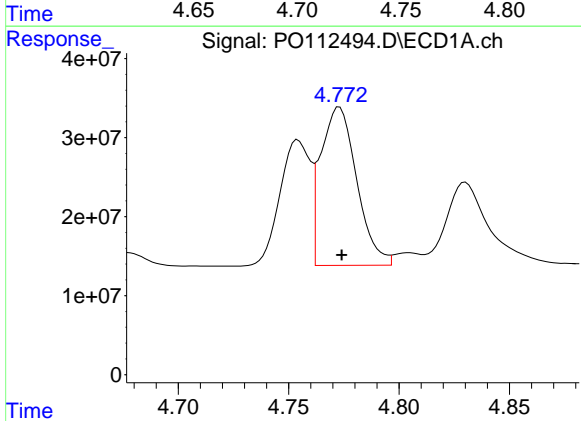
R.T.: 4.754 min
 Delta R.T.: -0.001 min
 Response: 151728144
 Conc: 565.38 ng/ml

Instrument :
 ECD_O
 ClientSampleId :
 AR1660CCC500



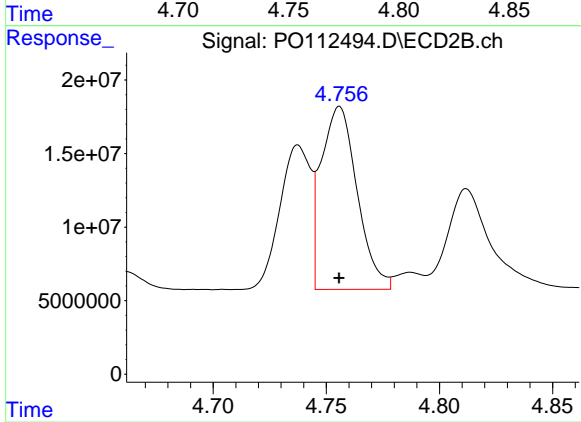
#3 AR-1016-1

R.T.: 4.738 min
 Delta R.T.: 0.000 min
 Response: 93047876
 Conc: 531.68 ng/ml



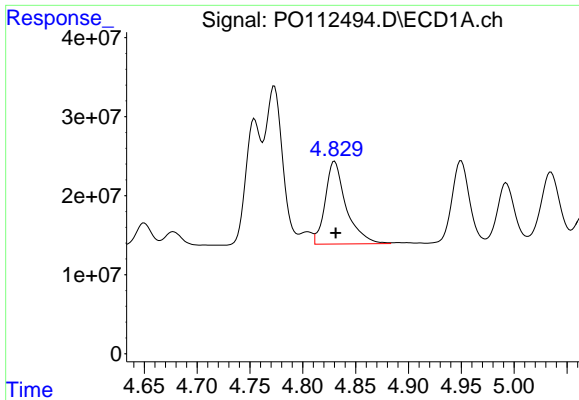
#4 AR-1016-2

R.T.: 4.773 min
 Delta R.T.: -0.001 min
 Response: 227535517
 Conc: 560.27 ng/ml



#4 AR-1016-2

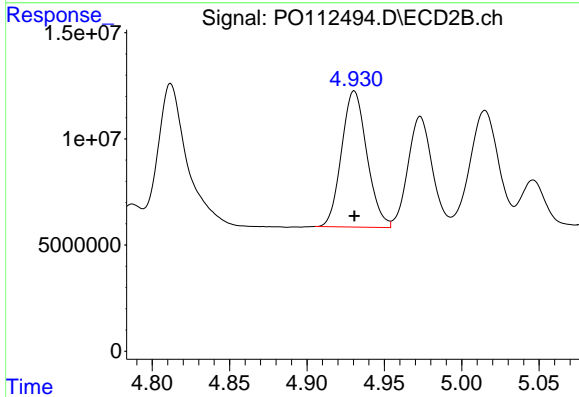
R.T.: 4.756 min
 Delta R.T.: 0.000 min
 Response: 137718491
 Conc: 528.68 ng/ml



#5 AR-1016-3

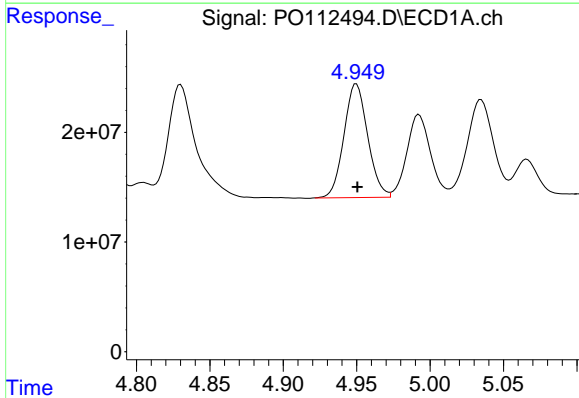
R.T.: 4.830 min
 Delta R.T.: -0.001 min
 Response: 143755308
 Conc: 549.37 ng/ml

Instrument :
 ECD_O
 ClientSampleId :
 AR1660CCC500



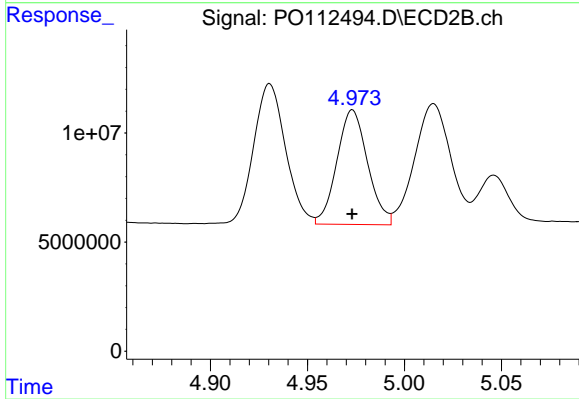
#5 AR-1016-3

R.T.: 4.931 min
 Delta R.T.: 0.000 min
 Response: 73082739
 Conc: 537.51 ng/ml



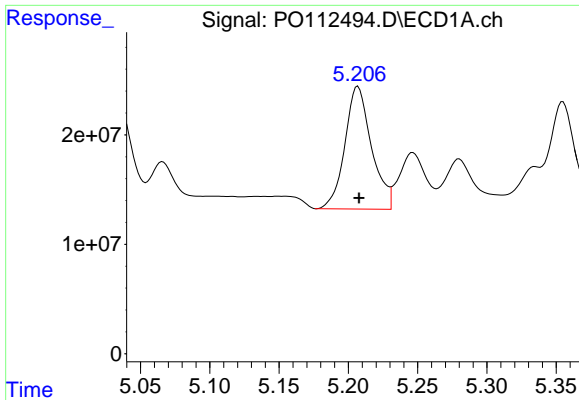
#6 AR-1016-4

R.T.: 4.950 min
 Delta R.T.: 0.000 min
 Response: 116803747
 Conc: 551.37 ng/ml



#6 AR-1016-4

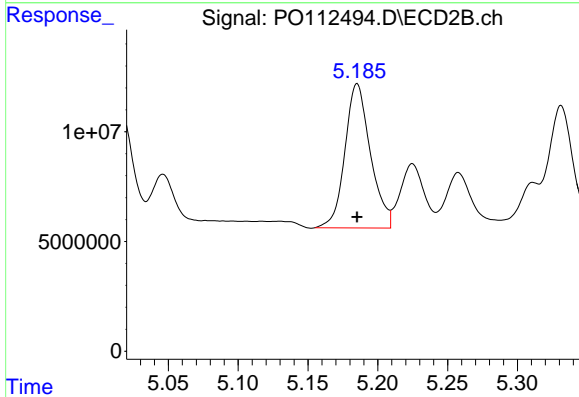
R.T.: 4.973 min
 Delta R.T.: 0.000 min
 Response: 57912008
 Conc: 521.33 ng/ml



#7 AR-1016-5

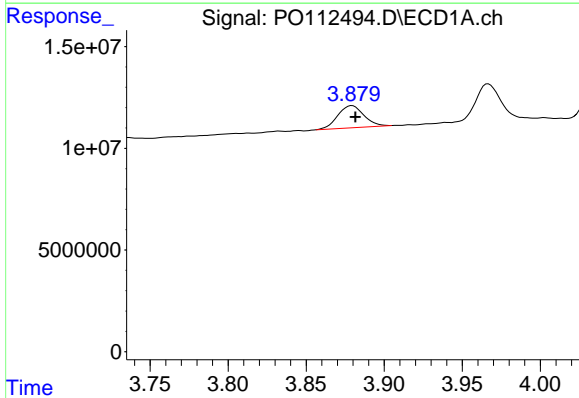
R.T.: 5.207 min
 Delta R.T.: 0.000 min
 Response: 149629439
 Conc: 681.77 ng/ml

Instrument :
 ECD_O
 ClientSampleId :
 AR1660CCC500



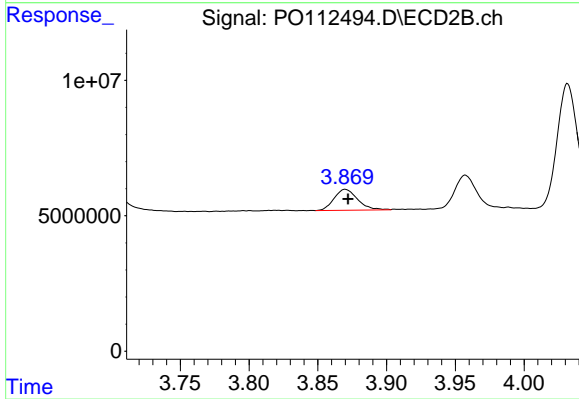
#7 AR-1016-5

R.T.: 5.185 min
 Delta R.T.: 0.000 min
 Response: 83570698
 Conc: 583.17 ng/ml



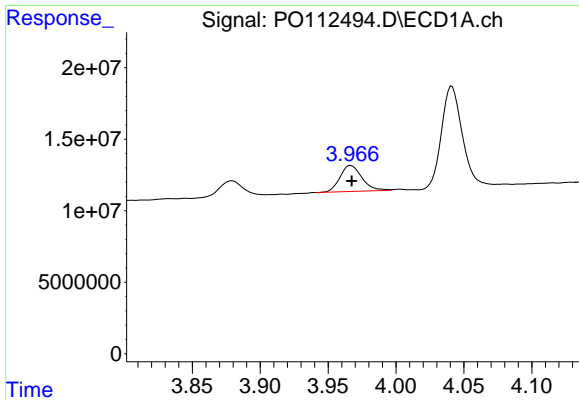
#8 AR-1221-1

R.T.: 3.879 min
 Delta R.T.: -0.002 min
 Response: 12671592
 Conc: 131.09 ng/ml



#8 AR-1221-1

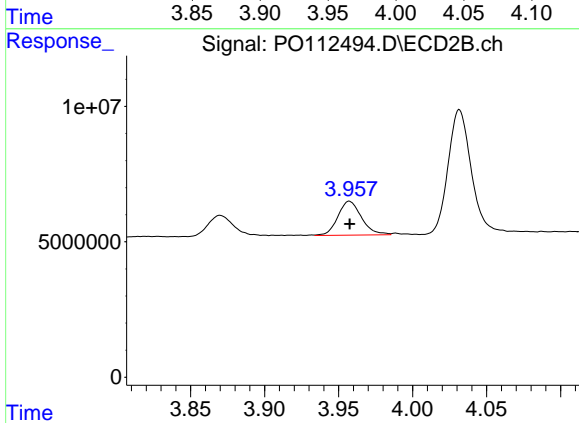
R.T.: 3.870 min
 Delta R.T.: -0.002 min
 Response: 9279232
 Conc: 137.95 ng/ml



#9 AR-1221-2

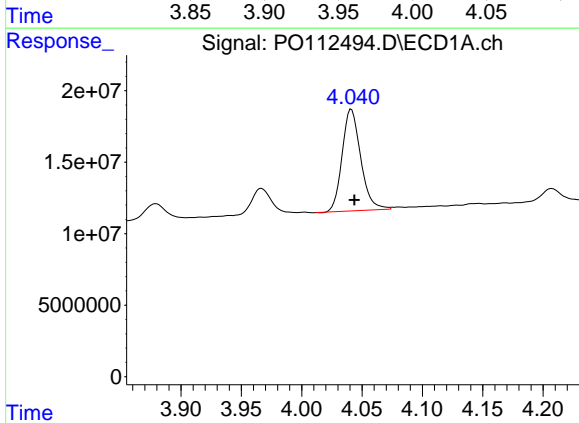
R.T.: 3.967 min
 Delta R.T.: 0.000 min
 Response: 20416793
 Conc: 284.11 ng/ml

Instrument :
 ECD_O
 ClientSampleId :
 AR1660CCC500



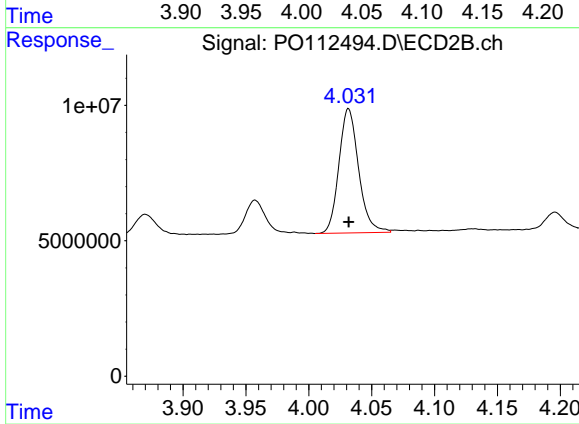
#9 AR-1221-2

R.T.: 3.957 min
 Delta R.T.: 0.000 min
 Response: 13925432
 Conc: 274.51 ng/ml



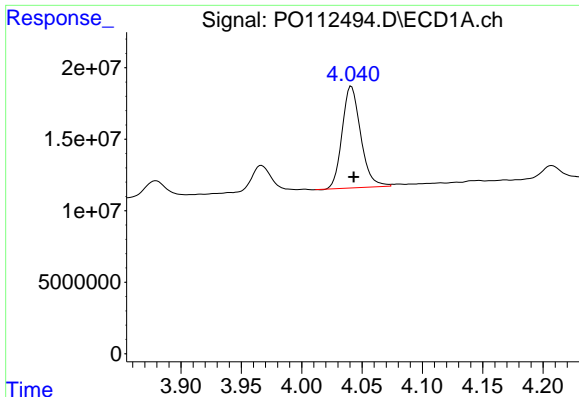
#10 AR-1221-3

R.T.: 4.041 min
 Delta R.T.: -0.002 min
 Response: 76140518
 Conc: 320.31 ng/ml



#10 AR-1221-3

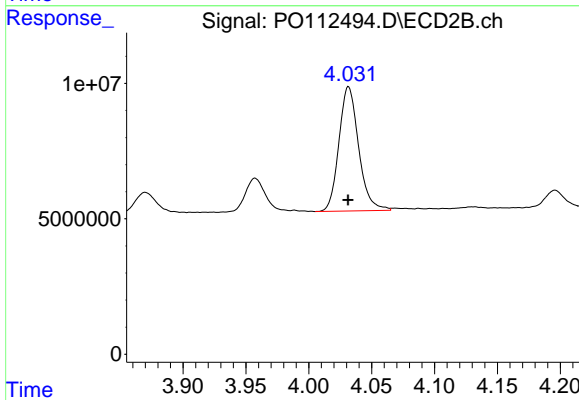
R.T.: 4.032 min
 Delta R.T.: 0.000 min
 Response: 50056266
 Conc: 315.75 ng/ml



#11 AR-1232-1

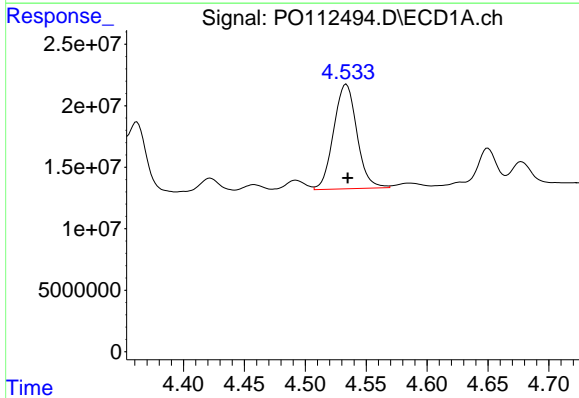
R.T.: 4.041 min
 Delta R.T.: -0.002 min
 Response: 76140518
 Conc: 407.22 ng/ml

Instrument :
 ECD_O
 ClientSampleId :
 AR1660CCC500



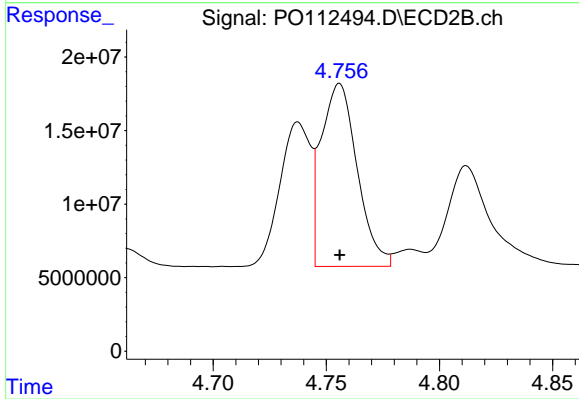
#11 AR-1232-1

R.T.: 4.032 min
 Delta R.T.: 0.000 min
 Response: 50056266
 Conc: 395.55 ng/ml



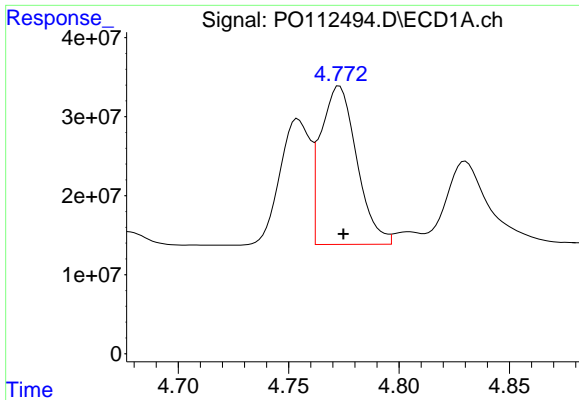
#12 AR-1232-2

R.T.: 4.534 min
 Delta R.T.: -0.001 min
 Response: 113072282
 Conc: 1050.62 ng/ml



#12 AR-1232-2

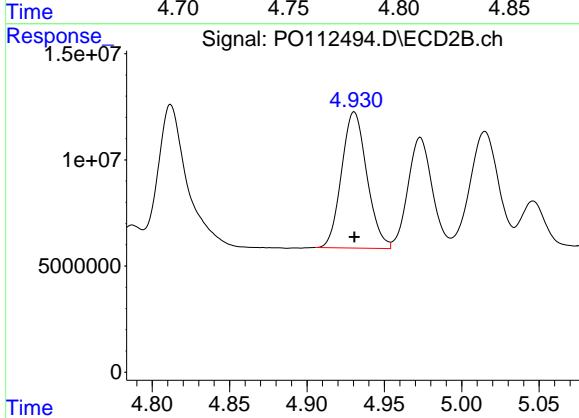
R.T.: 4.756 min
 Delta R.T.: 0.000 min
 Response: 137718491
 Conc: 1050.05 ng/ml



#13 AR-1232-3

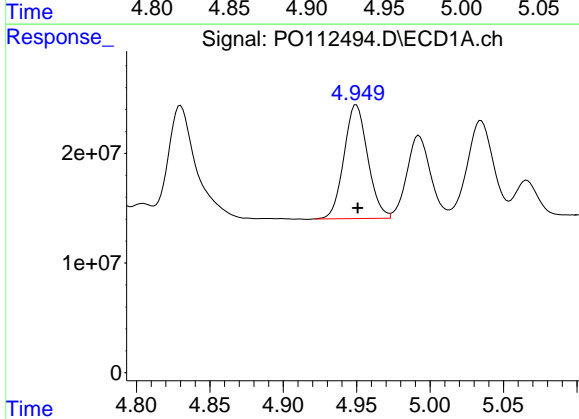
R.T.: 4.773 min
 Delta R.T.: -0.002 min
 Response: 227535517
 Conc: 1100.27 ng/ml

Instrument :
 ECD_O
 ClientSampleId :
 AR1660CCC500



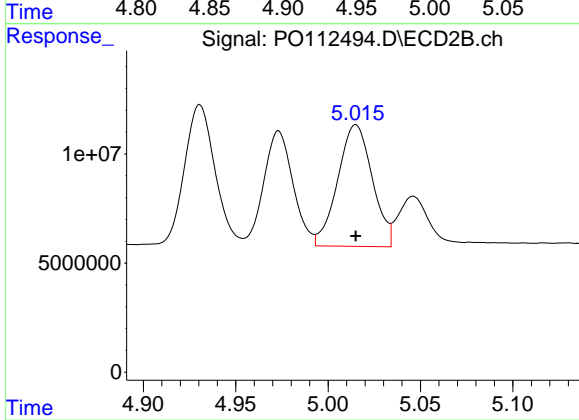
#13 AR-1232-3

R.T.: 4.931 min
 Delta R.T.: 0.000 min
 Response: 73082739
 Conc: 1087.59 ng/ml



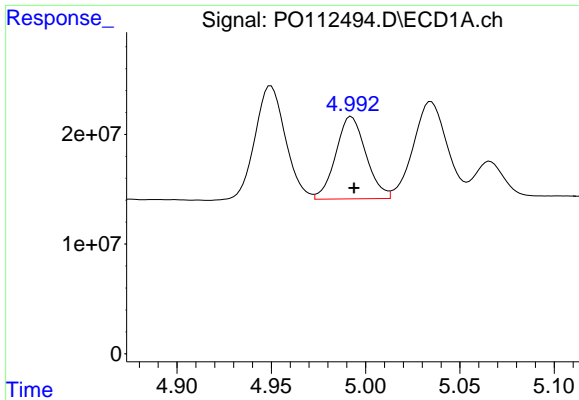
#14 AR-1232-4

R.T.: 4.950 min
 Delta R.T.: 0.000 min
 Response: 116803747
 Conc: 1115.17 ng/ml



#14 AR-1232-4

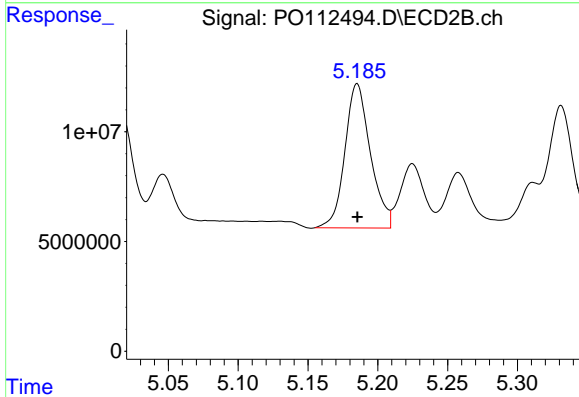
R.T.: 5.015 min
 Delta R.T.: 0.000 min
 Response: 72787573
 Conc: 1216.59 ng/ml



#15 AR-1232-5

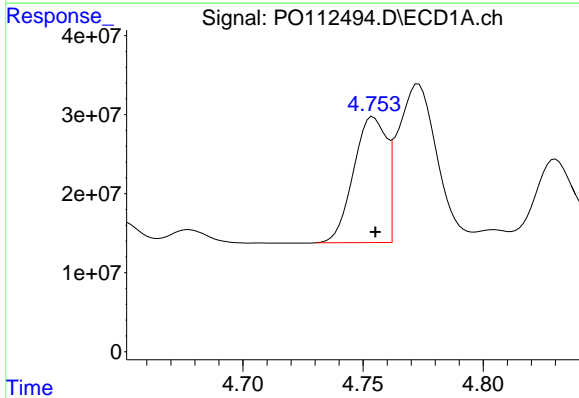
R.T.: 4.992 min
 Delta R.T.: -0.001 min
 Response: 83800293
 Conc: 1234.52 ng/ml

Instrument :
 ECD_O
 ClientSampleId :
 AR1660CCC500



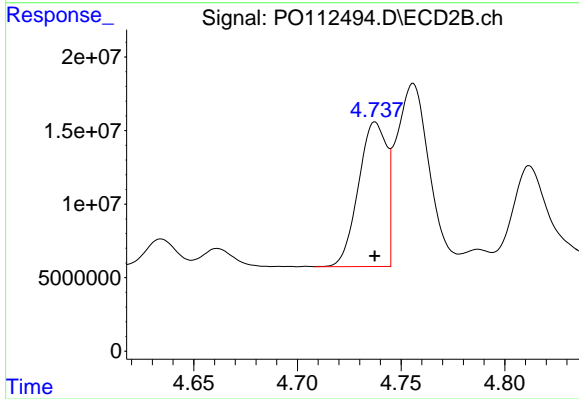
#15 AR-1232-5

R.T.: 5.185 min
 Delta R.T.: 0.000 min
 Response: 83570698
 Conc: 1281.70 ng/ml



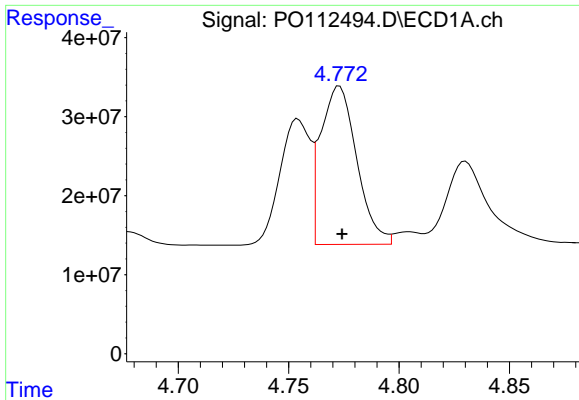
#16 AR-1242-1

R.T.: 4.754 min
 Delta R.T.: 0.000 min
 Response: 151728144
 Conc: 612.82 ng/ml



#16 AR-1242-1

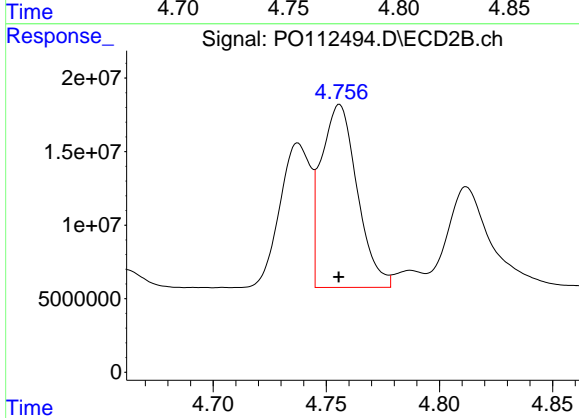
R.T.: 4.738 min
 Delta R.T.: 0.000 min
 Response: 93047876
 Conc: 587.45 ng/ml



#17 AR-1242-2

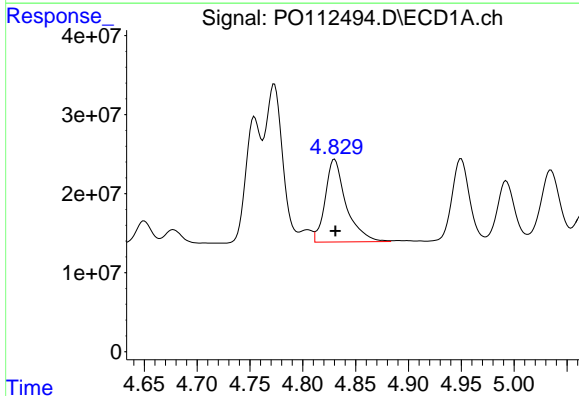
R.T.: 4.773 min
 Delta R.T.: -0.001 min
 Response: 227535517
 Conc: 615.30 ng/ml

Instrument :
 ECD_O
 ClientSampleId :
 AR1660CCC500



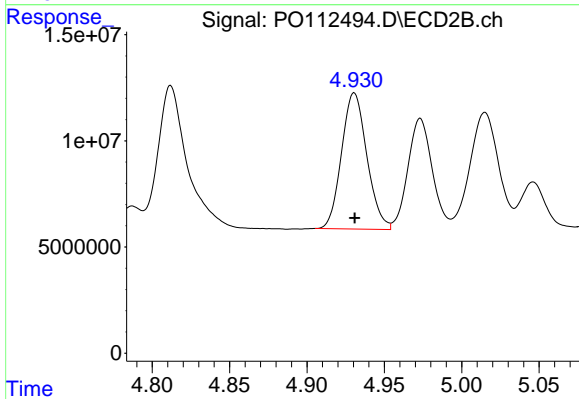
#17 AR-1242-2

R.T.: 4.756 min
 Delta R.T.: 0.000 min
 Response: 137718491
 Conc: 589.38 ng/ml



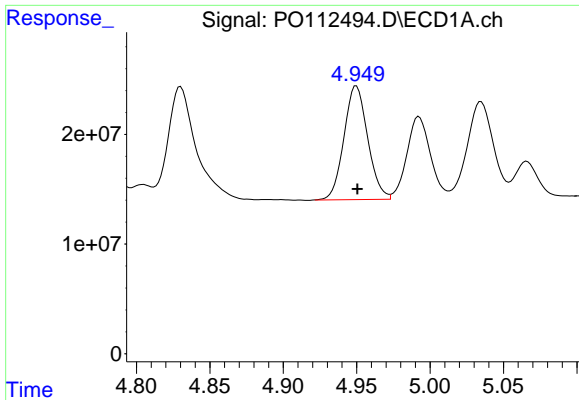
#18 AR-1242-3

R.T.: 4.830 min
 Delta R.T.: 0.000 min
 Response: 143755308
 Conc: 607.44 ng/ml



#18 AR-1242-3

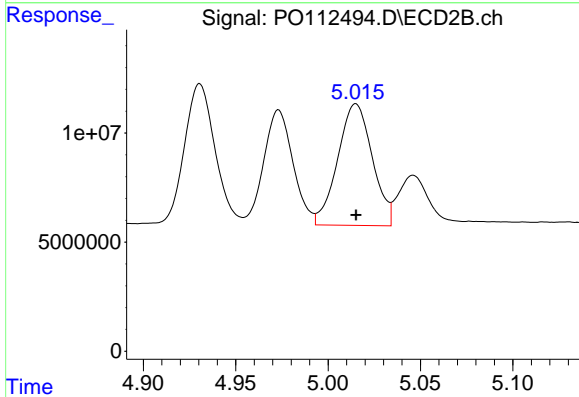
R.T.: 4.931 min
 Delta R.T.: 0.000 min
 Response: 73082739
 Conc: 603.05 ng/ml



#19 AR-1242-4

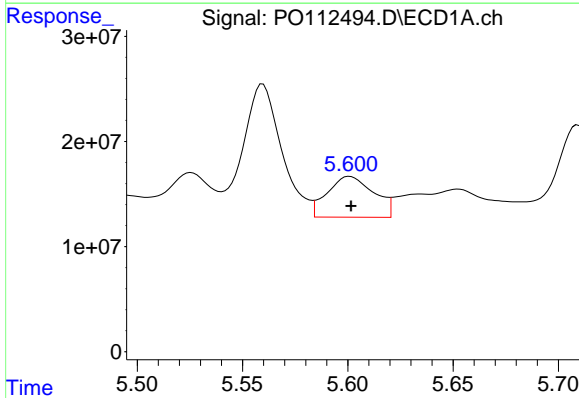
R.T.: 4.950 min
 Delta R.T.: 0.000 min
 Response: 116803747
 Conc: 601.22 ng/ml

Instrument :
 ECD_O
 ClientSampleId :
 AR1660CCC500



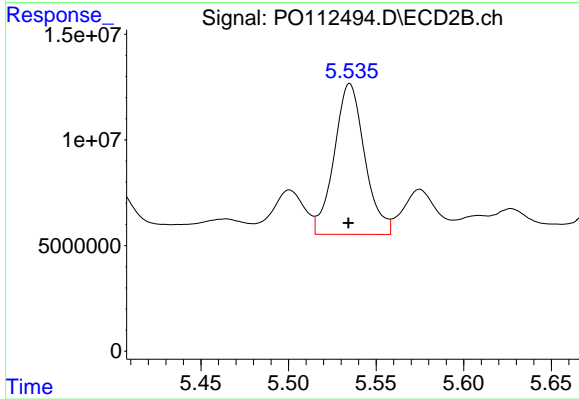
#19 AR-1242-4

R.T.: 5.015 min
 Delta R.T.: 0.000 min
 Response: 72787573
 Conc: 593.03 ng/ml



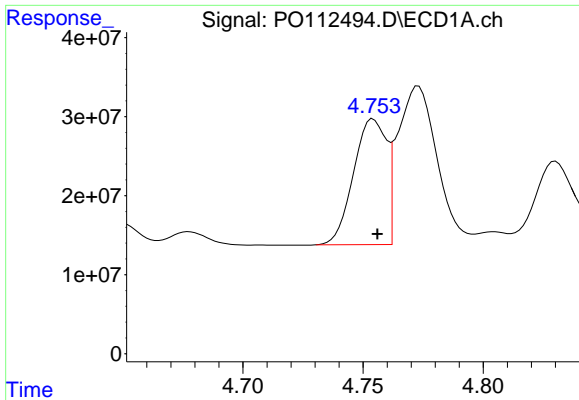
#20 AR-1242-5

R.T.: 5.601 min
 Delta R.T.: 0.000 min
 Response: 59622340
 Conc: 278.72 ng/ml



#20 AR-1242-5

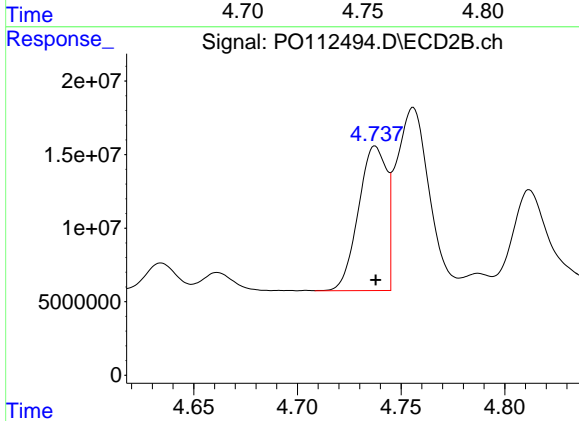
R.T.: 5.535 min
 Delta R.T.: 0.000 min
 Response: 86696557
 Conc: 538.58 ng/ml



#21 AR-1248-1

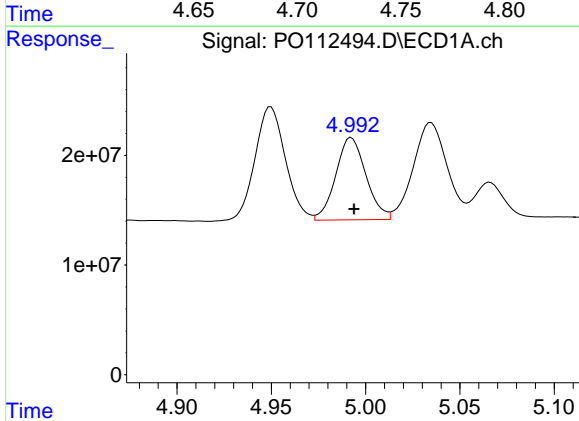
R.T.: 4.754 min
 Delta R.T.: -0.002 min
 Response: 151728144
 Conc: 810.48 ng/ml

Instrument :
 ECD_O
 ClientSampleId :
 AR1660CCC500



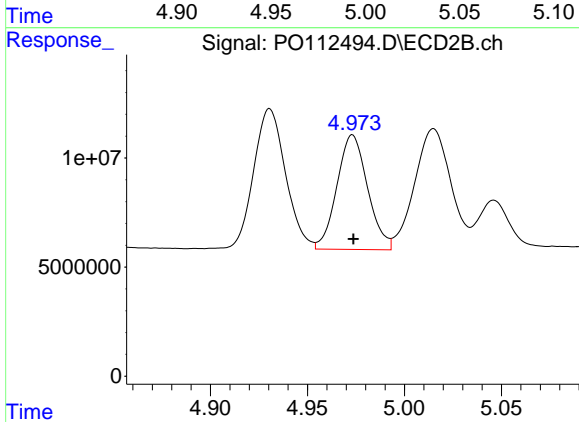
#21 AR-1248-1

R.T.: 4.738 min
 Delta R.T.: 0.000 min
 Response: 93047876
 Conc: 765.77 ng/ml



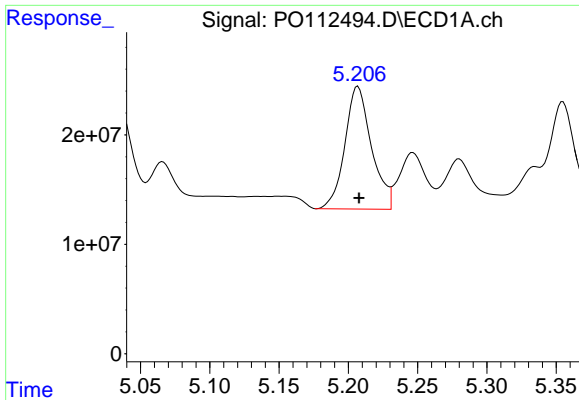
#22 AR-1248-2

R.T.: 4.992 min
 Delta R.T.: -0.001 min
 Response: 83800293
 Conc: 328.48 ng/ml



#22 AR-1248-2

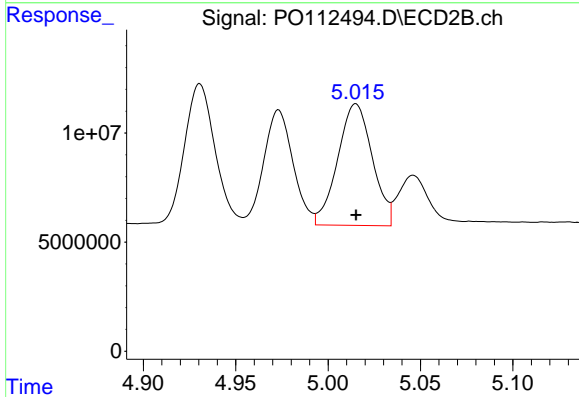
R.T.: 4.973 min
 Delta R.T.: 0.000 min
 Response: 57912008
 Conc: 342.11 ng/ml



#23 AR-1248-3

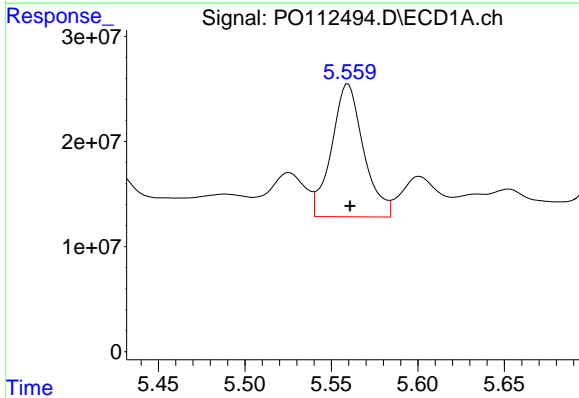
R.T.: 5.207 min
 Delta R.T.: 0.000 min
 Response: 149629439
 Conc: 435.35 ng/ml

Instrument :
 ECD_O
 ClientSampleId :
 AR1660CCC500



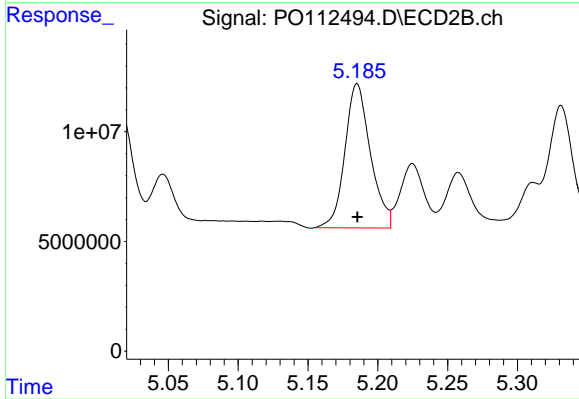
#23 AR-1248-3

R.T.: 5.015 min
 Delta R.T.: 0.000 min
 Response: 72787573
 Conc: 409.73 ng/ml



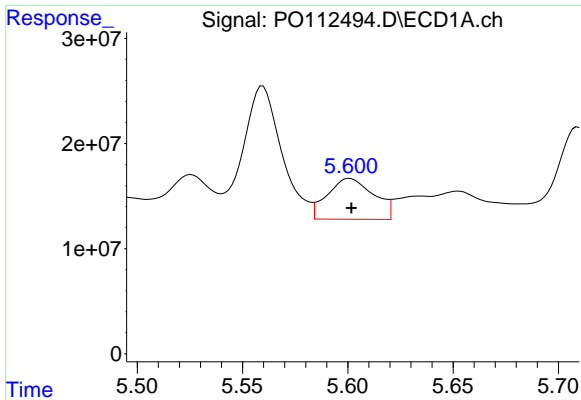
#24 AR-1248-4

R.T.: 5.560 min
 Delta R.T.: -0.001 min
 Response: 162332435
 Conc: 319.50 ng/ml



#24 AR-1248-4

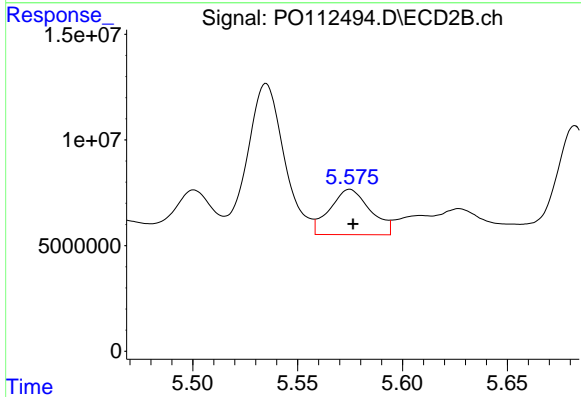
R.T.: 5.185 min
 Delta R.T.: 0.000 min
 Response: 83570698
 Conc: 401.10 ng/ml



#25 AR-1248-5

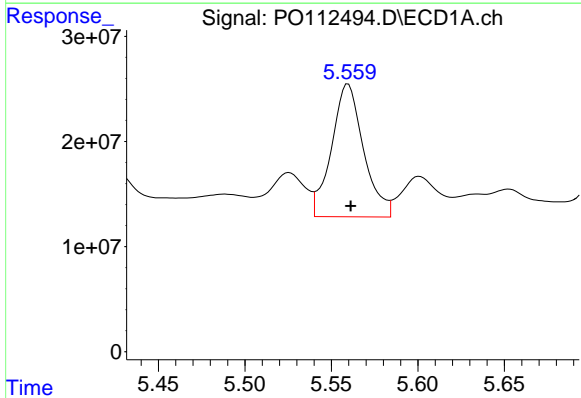
R.T.: 5.601 min
 Delta R.T.: 0.000 min
 Response: 59622340
 Conc: 170.55 ng/ml

Instrument :
 ECD_O
 ClientSampleId :
 AR1660CCC500



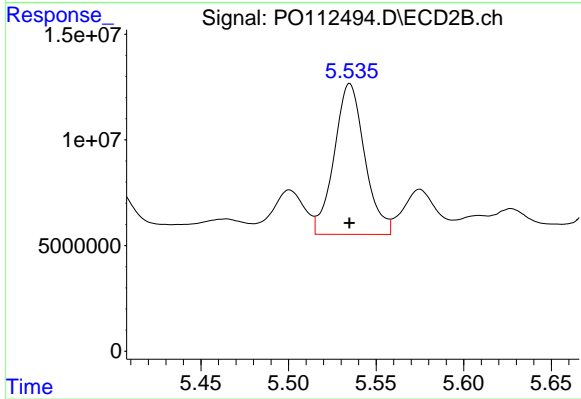
#25 AR-1248-5

R.T.: 5.575 min
 Delta R.T.: -0.002 min
 Response: 28882862
 Conc: 134.49 ng/ml



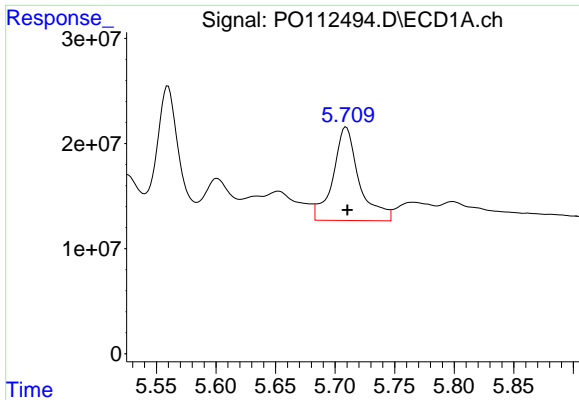
#26 AR-1254-1

R.T.: 5.560 min
 Delta R.T.: -0.001 min
 Response: 162332435
 Conc: 295.71 ng/ml



#26 AR-1254-1

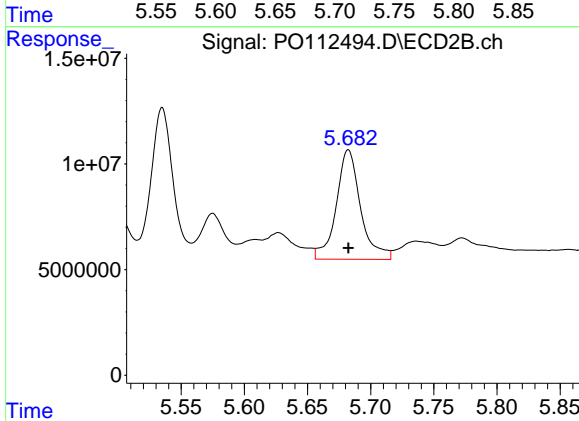
R.T.: 5.535 min
 Delta R.T.: 0.000 min
 Response: 86696557
 Conc: 263.82 ng/ml



#27 AR-1254-2

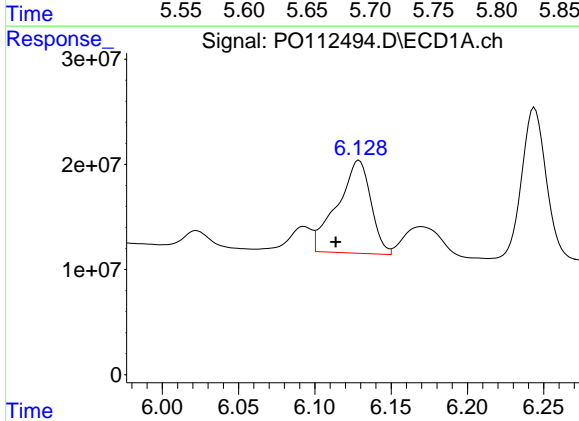
R.T.: 5.709 min
 Delta R.T.: -0.001 min
 Response: 135995379
 Conc: 279.87 ng/ml

Instrument :
 ECD_O
 ClientSampleId :
 AR1660CCC500



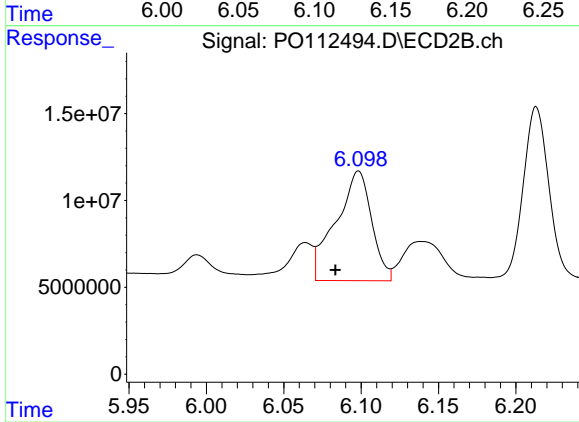
#27 AR-1254-2

R.T.: 5.682 min
 Delta R.T.: 0.000 min
 Response: 69600146
 Conc: 240.42 ng/ml



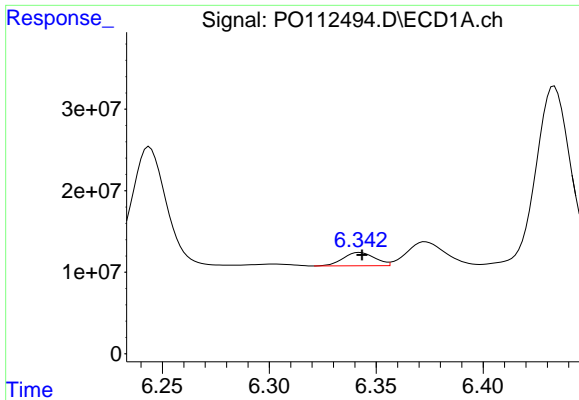
#28 AR-1254-3

R.T.: 6.129 min
 Delta R.T.: 0.015 min
 Response: 134925139
 Conc: 181.28 ng/ml



#28 AR-1254-3

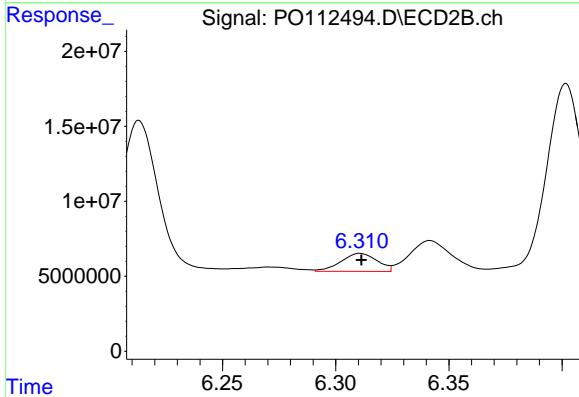
R.T.: 6.098 min
 Delta R.T.: 0.015 min
 Response: 101477505
 Conc: 237.40 ng/ml



#29 AR-1254-4

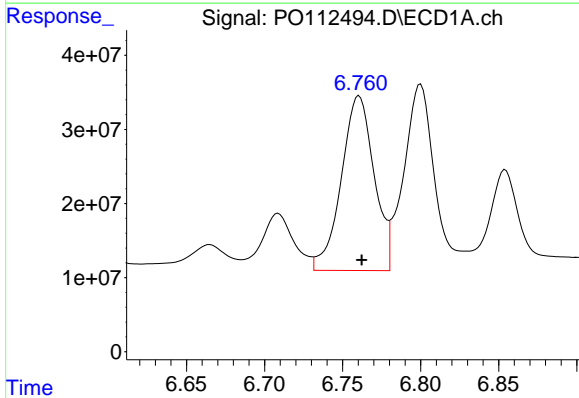
R.T.: 6.342 min
 Delta R.T.: 0.000 min
 Response: 16746995
 Conc: 30.47 ng/ml

Instrument :
 ECD_O
 ClientSampleId :
 AR1660CCC500



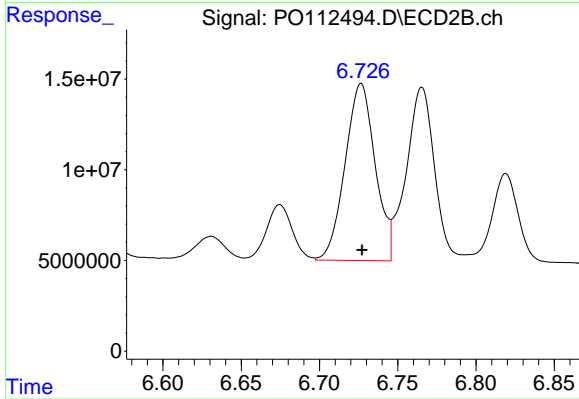
#29 AR-1254-4

R.T.: 6.311 min
 Delta R.T.: 0.000 min
 Response: 13319628
 Conc: 48.80 ng/ml



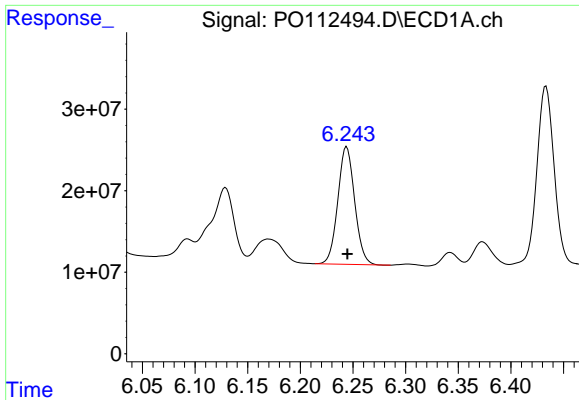
#30 AR-1254-5

R.T.: 6.761 min
 Delta R.T.: -0.002 min
 Response: 345565430
 Conc: 488.21 ng/ml



#30 AR-1254-5

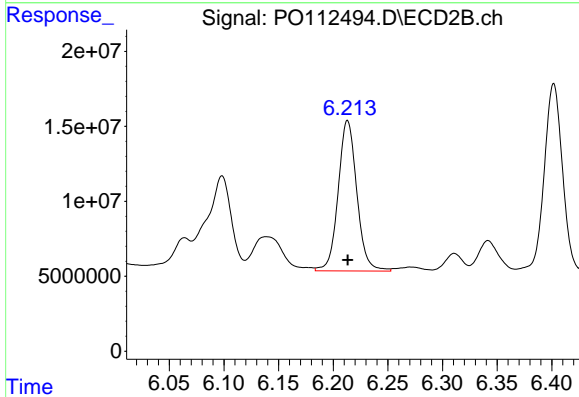
R.T.: 6.727 min
 Delta R.T.: 0.000 min
 Response: 130579786
 Conc: 390.93 ng/ml



#31 AR-1260-1

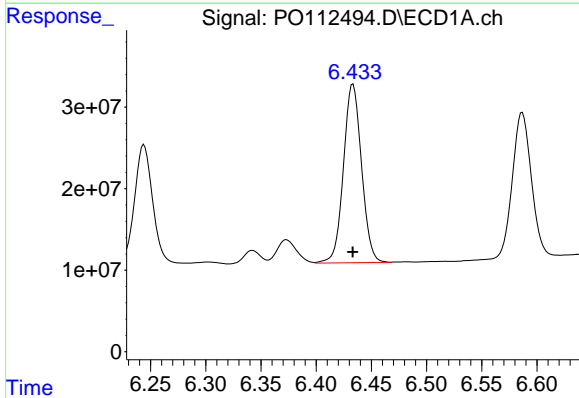
R.T.: 6.244 min
 Delta R.T.: 0.000 min
 Response: 161008010
 Conc: 366.48 ng/ml

Instrument :
 ECD_O
 ClientSampleId :
 AR1660CCC500



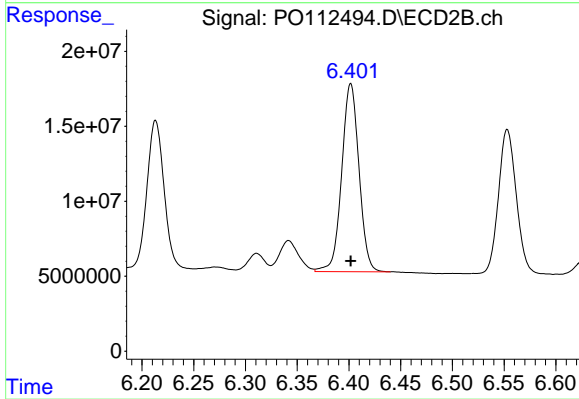
#31 AR-1260-1

R.T.: 6.213 min
 Delta R.T.: 0.000 min
 Response: 119539415
 Conc: 481.02 ng/ml



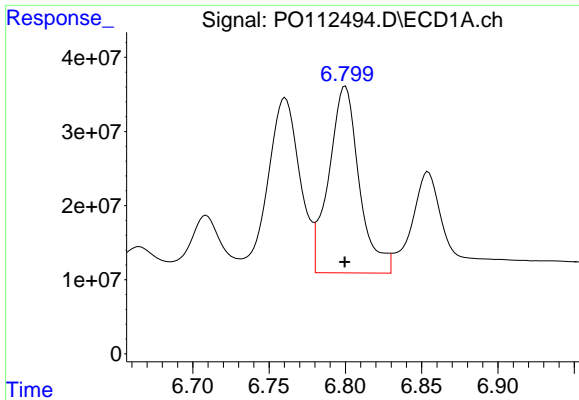
#32 AR-1260-2

R.T.: 6.433 min
 Delta R.T.: 0.000 min
 Response: 249352865
 Conc: 362.49 ng/ml



#32 AR-1260-2

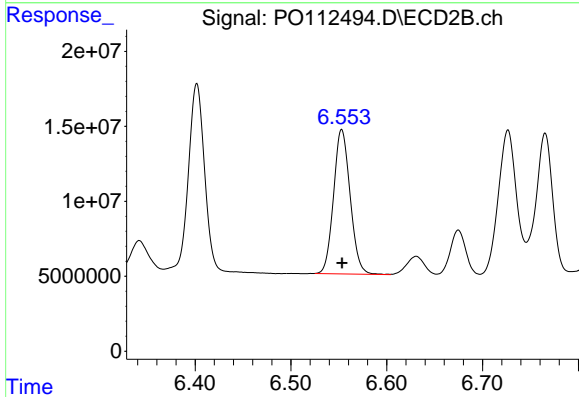
R.T.: 6.402 min
 Delta R.T.: 0.000 min
 Response: 145774065
 Conc: 442.42 ng/ml



#33 AR-1260-3

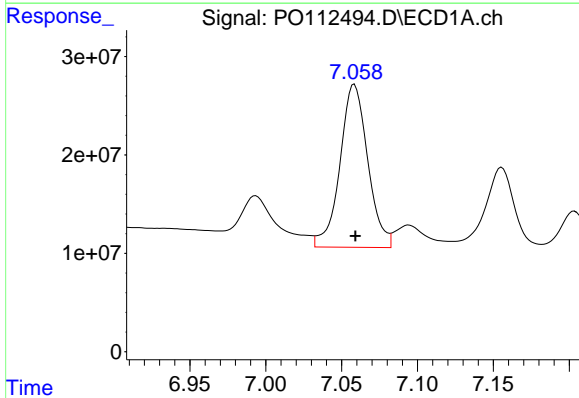
R.T.: 6.800 min
 Delta R.T.: 0.000 min
 Response: 349396009
 Conc: 594.19 ng/ml

Instrument :
 ECD_O
 ClientSampleId :
 AR1660CCC500



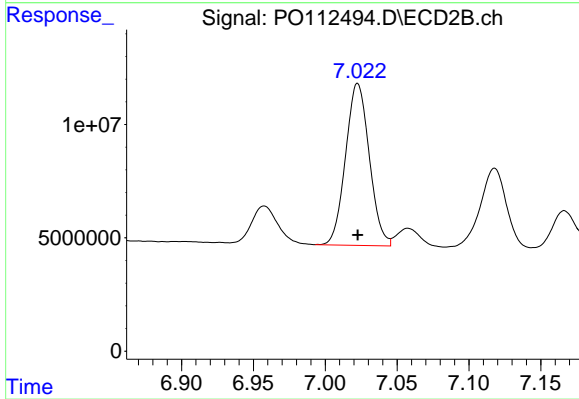
#33 AR-1260-3

R.T.: 6.553 min
 Delta R.T.: 0.000 min
 Response: 115465041
 Conc: 449.42 ng/ml



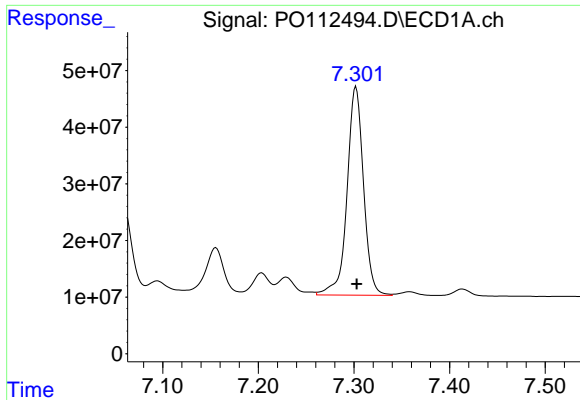
#34 AR-1260-4

R.T.: 7.058 min
 Delta R.T.: 0.000 min
 Response: 211476606
 Conc: 468.90 ng/ml



#34 AR-1260-4

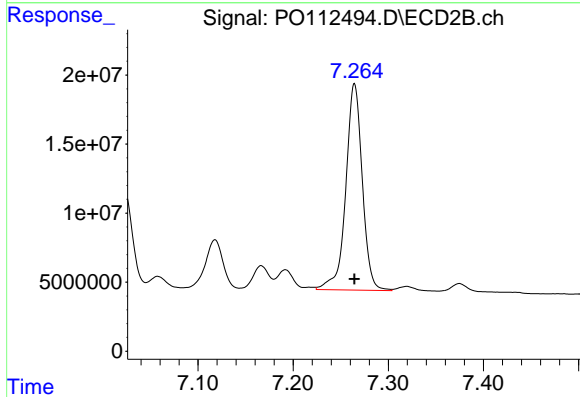
R.T.: 7.023 min
 Delta R.T.: 0.000 min
 Response: 82265475
 Conc: 430.01 ng/ml



#35 AR-1260-5

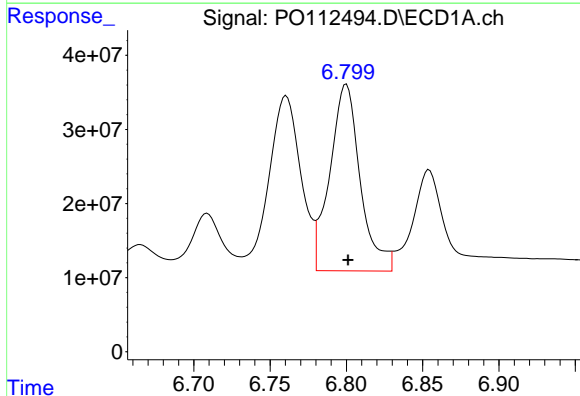
R.T.: 7.302 min
 Delta R.T.: 0.000 min
 Response: 442273621
 Conc: 356.92 ng/ml

Instrument :
 ECD_O
 ClientSampleId :
 AR1660CCC500



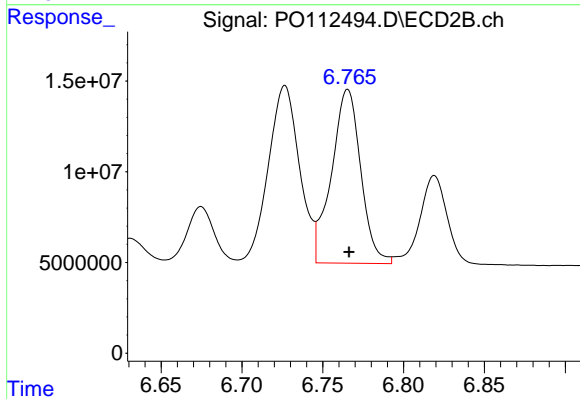
#35 AR-1260-5

R.T.: 7.265 min
 Delta R.T.: 0.000 min
 Response: 180304843
 Conc: 437.43 ng/ml



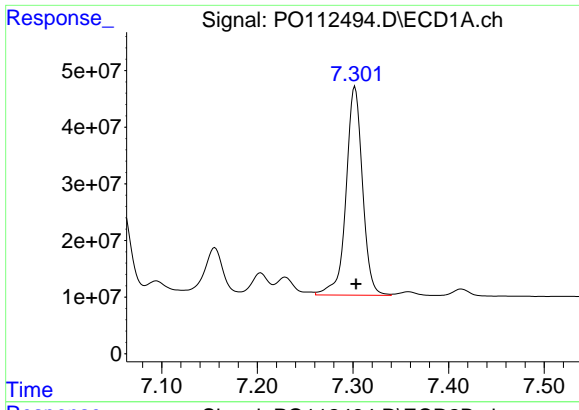
#36 AR-1262-1

R.T.: 6.800 min
 Delta R.T.: -0.001 min
 Response: 349396009
 Conc: 376.01 ng/ml



#36 AR-1262-1

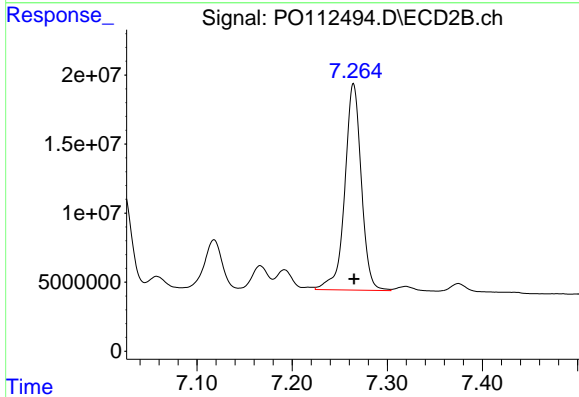
R.T.: 6.765 min
 Delta R.T.: 0.000 min
 Response: 120804953
 Conc: 291.22 ng/ml



#37 AR-1262-2

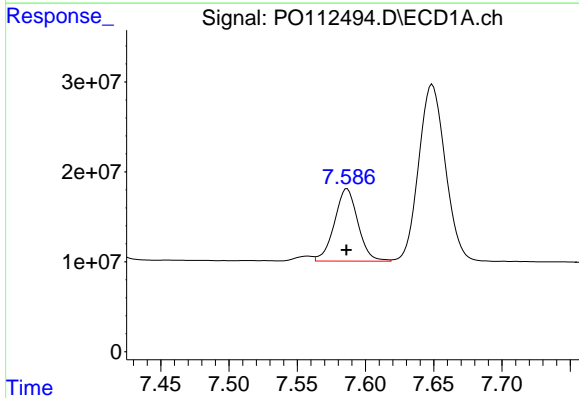
R.T.: 7.302 min
 Delta R.T.: -0.001 min
 Response: 442273621
 Conc: 297.42 ng/ml

Instrument :
 ECD_O
 ClientSampleId :
 AR1660CCC500



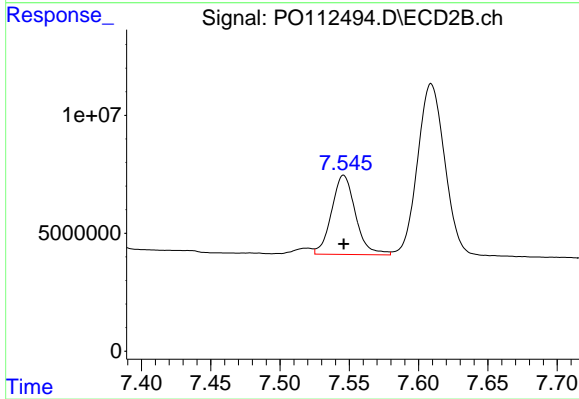
#37 AR-1262-2

R.T.: 7.265 min
 Delta R.T.: 0.000 min
 Response: 180304843
 Conc: 349.74 ng/ml



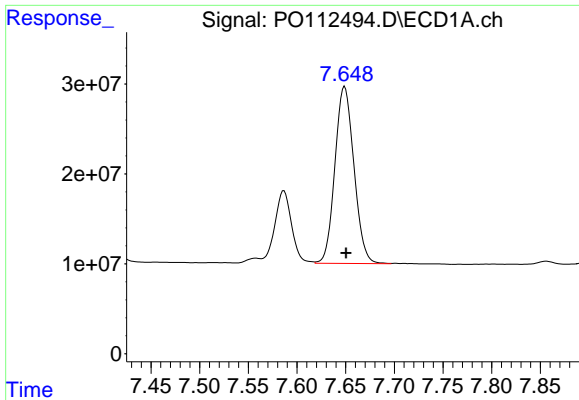
#38 AR-1262-3

R.T.: 7.587 min
 Delta R.T.: 0.000 min
 Response: 96441811
 Conc: 163.39 ng/ml



#38 AR-1262-3

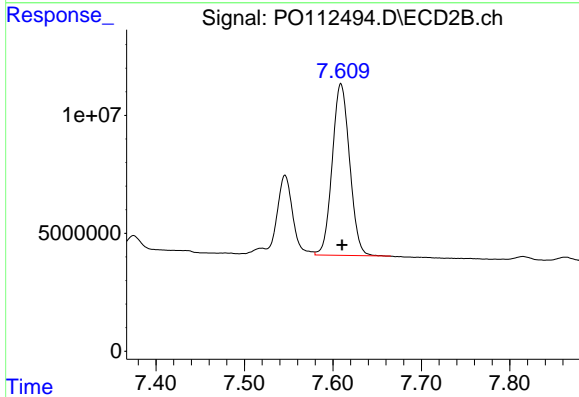
R.T.: 7.546 min
 Delta R.T.: 0.000 min
 Response: 40330511
 Conc: 216.22 ng/ml



#39 AR-1262-4

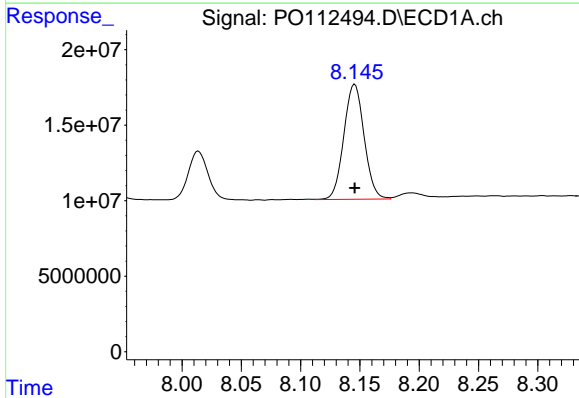
R.T.: 7.649 min
 Delta R.T.: -0.001 min
 Response: 268030196
 Conc: 269.60 ng/ml

Instrument :
 ECD_O
 ClientSampleId :
 AR1660CCC500



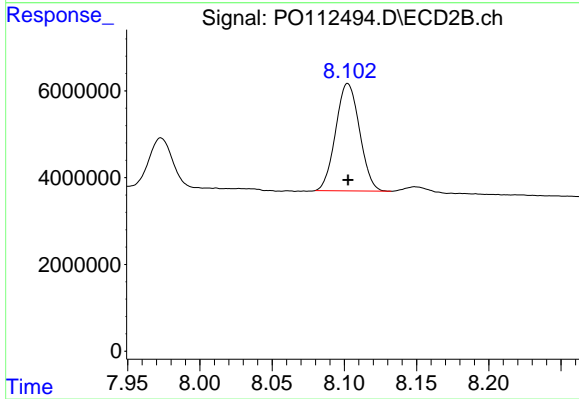
#39 AR-1262-4

R.T.: 7.609 min
 Delta R.T.: -0.001 min
 Response: 99432179
 Conc: 345.13 ng/ml



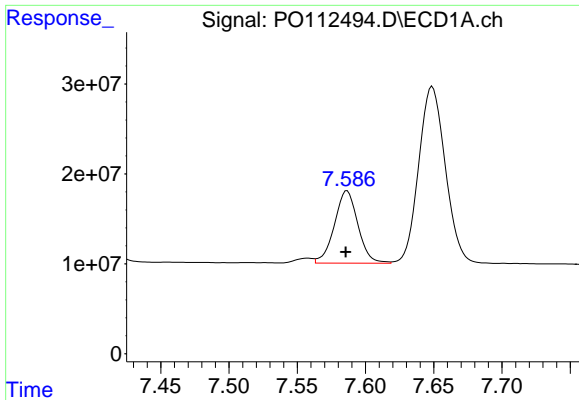
#40 AR-1262-5

R.T.: 8.146 min
 Delta R.T.: 0.000 min
 Response: 90908275
 Conc: 209.44 ng/ml



#40 AR-1262-5

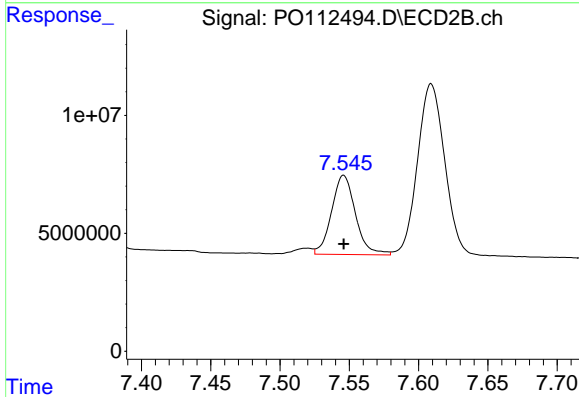
R.T.: 8.102 min
 Delta R.T.: 0.000 min
 Response: 28463025
 Conc: 286.05 ng/ml



#41 AR-1268-1

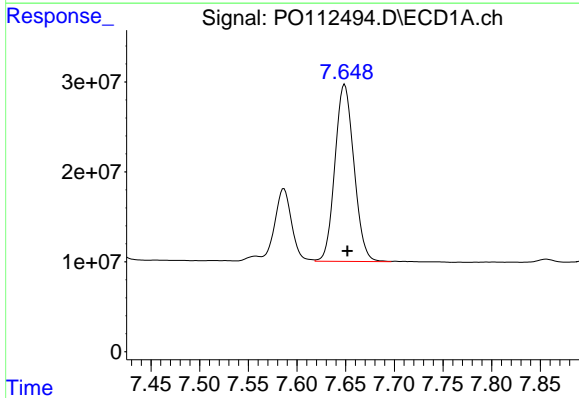
R.T.: 7.587 min
 Delta R.T.: 0.001 min
 Response: 96441811
 Conc: 55.07 ng/ml

Instrument :
 ECD_O
 ClientSampleId :
 AR1660CCC500



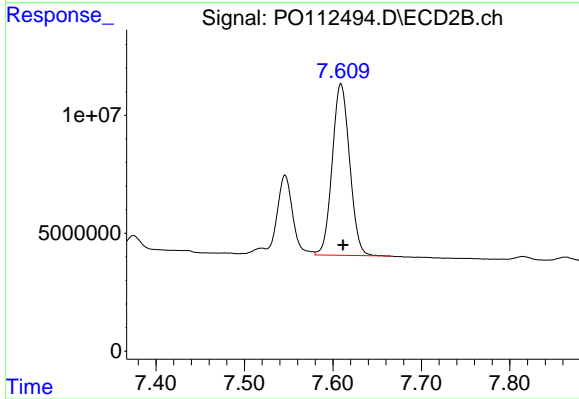
#41 AR-1268-1

R.T.: 7.546 min
 Delta R.T.: 0.000 min
 Response: 40330511
 Conc: 77.88 ng/ml



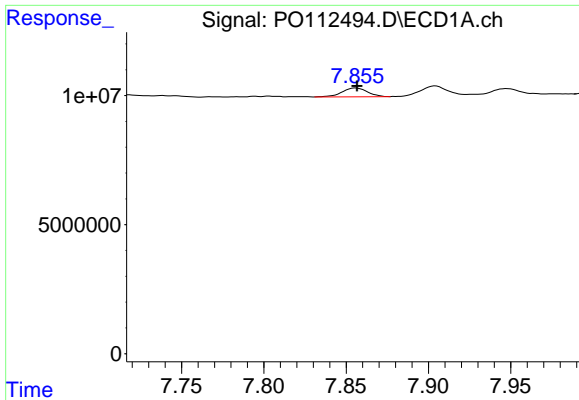
#42 AR-1268-2

R.T.: 7.649 min
 Delta R.T.: -0.003 min
 Response: 268030196
 Conc: 181.96 ng/ml



#42 AR-1268-2

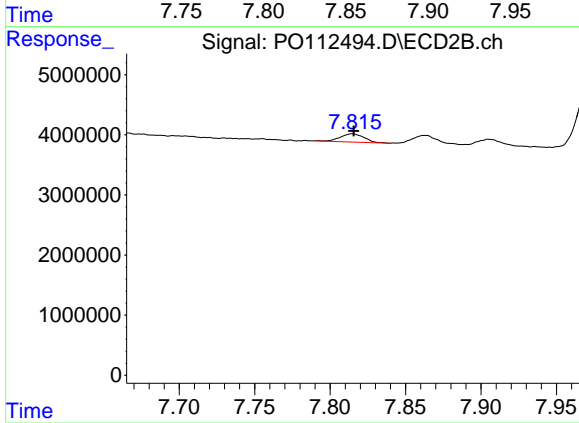
R.T.: 7.609 min
 Delta R.T.: -0.002 min
 Response: 99432179
 Conc: 233.92 ng/ml



#43 AR-1268-3

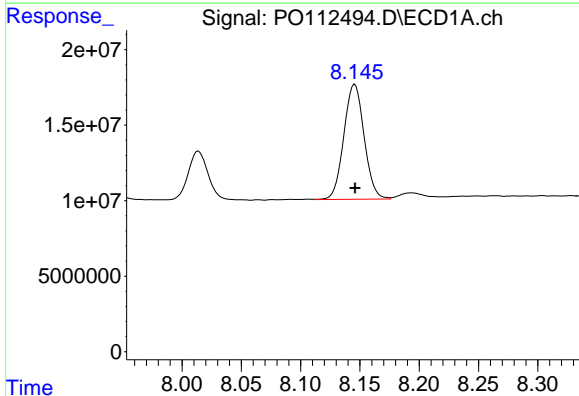
R.T.: 7.856 min
 Delta R.T.: 0.000 min
 Response: 3649662
 Conc: 2.91 ng/ml

Instrument :
 ECD_O
 ClientSampleId :
 AR1660CCC500



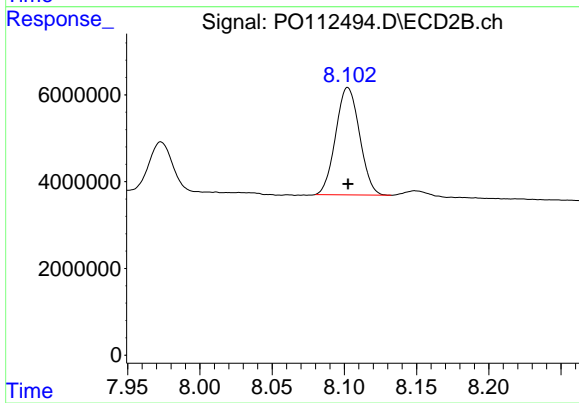
#43 AR-1268-3

R.T.: 7.815 min
 Delta R.T.: 0.000 min
 Response: 1522072
 Conc: 4.74 ng/ml



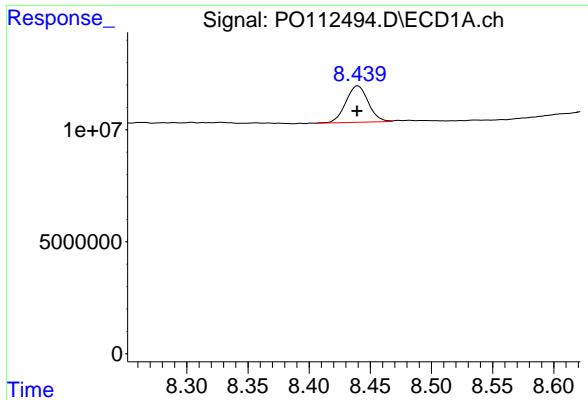
#44 AR-1268-4

R.T.: 8.146 min
 Delta R.T.: 0.000 min
 Response: 90908275
 Conc: 188.66 ng/ml



#44 AR-1268-4

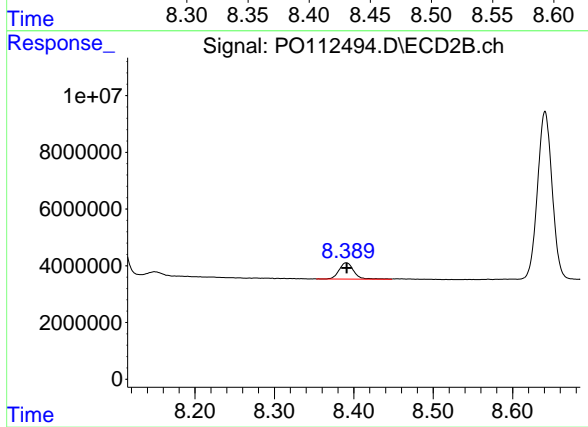
R.T.: 8.102 min
 Delta R.T.: 0.000 min
 Response: 28463025
 Conc: 255.74 ng/ml



#45 AR-1268-5

R.T.: 8.440 min
 Delta R.T.: 0.000 min
 Response: 20753984
 Conc: 6.18 ng/ml

Instrument :
 ECD_O
 ClientSampleId :
 AR1660CCC500



#45 AR-1268-5

R.T.: 8.391 min
 Delta R.T.: 0.000 min
 Response: 7294847
 Conc: 9.97 ng/ml