

Data Path : Z:\pestpcbsrv\HPCHEM1\ECD_0\Data\P0072520\
 Data File : P0070009.D
 Signal(s) : Signal #1: ECD1A.CH Signal #2: ECD2B.CH
 Acq On : 24 Jul 2020 20:01
 Operator : DD\AJ
 Sample : L3412-01
 Misc :
 ALS Vial : 28 Sample Multiplier: 1

Instrument :
 ECD_0
 ClientSampleId :
 DUCK-BANK

Integration File signal 1: autoint1.e
 Integration File signal 2: autoint2.e
 Quant Time: Jul 25 00:04:54 2020
 Quant Method : Z:\pestpcbsrv\HPCHEM1\ECD_0\methods\P0072320.M
 Quant Title : GC EXTRACTABLES
 QLast Update : Thu Jul 23 02:12:36 2020
 Response via : Initial Calibration
 Integrator: ChemStation 6890 Scale Mode: Small noise peaks clipped

Volume Inj. : 2 µl
 Signal #1 Phase : ZB-MR1 Signal #2 Phase: ZB-MR2
 Signal #1 Info : 30Mx0.32mmx 0.50µ Signal #2 Info : 30M x 0.32mm x 0.25µm

Compound	RT#1	RT#2	Resp#1	Resp#2	ng/ml	ng/ml

System Monitoring Compounds						
1) SA Tetrachlo...	4.373	3.552	883355	958601	25.733	26.595
2) SA Decachlor...	10.009	8.753	1242464	1114569	23.253	21.854

Target Compounds

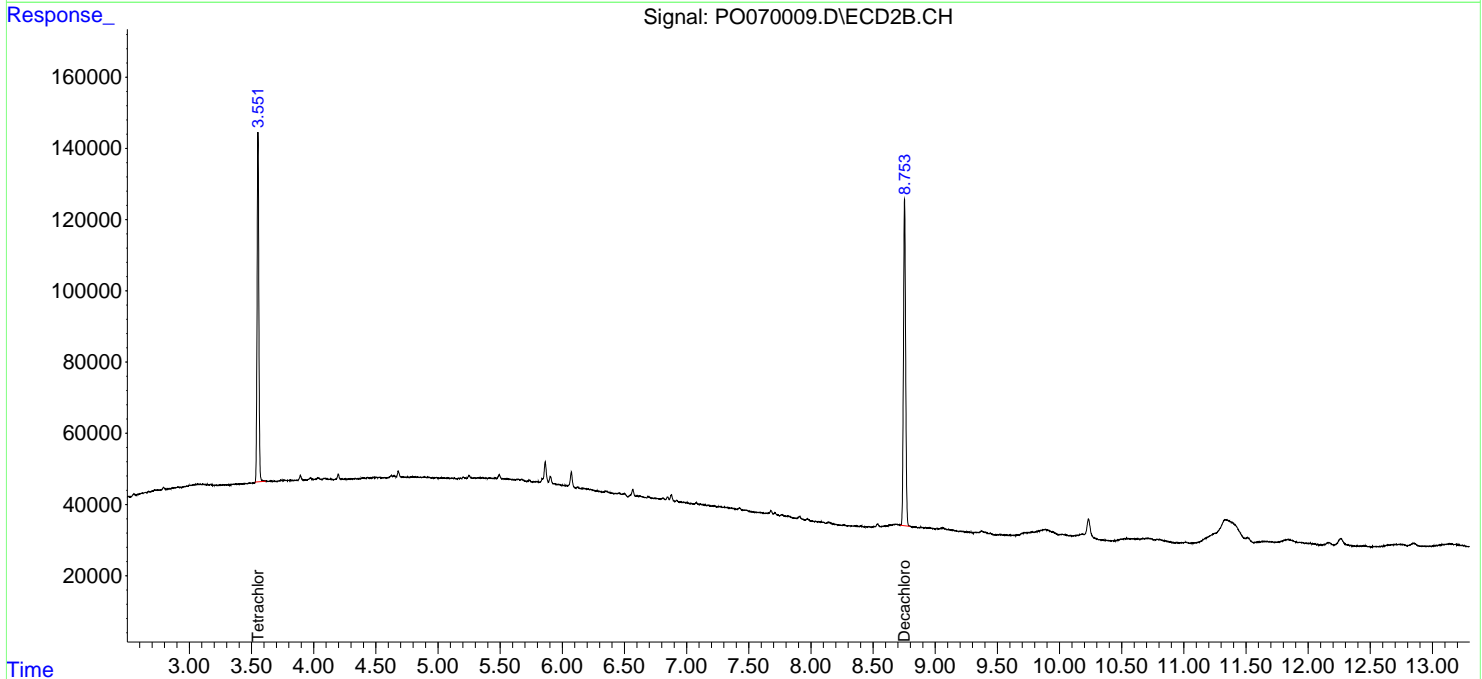
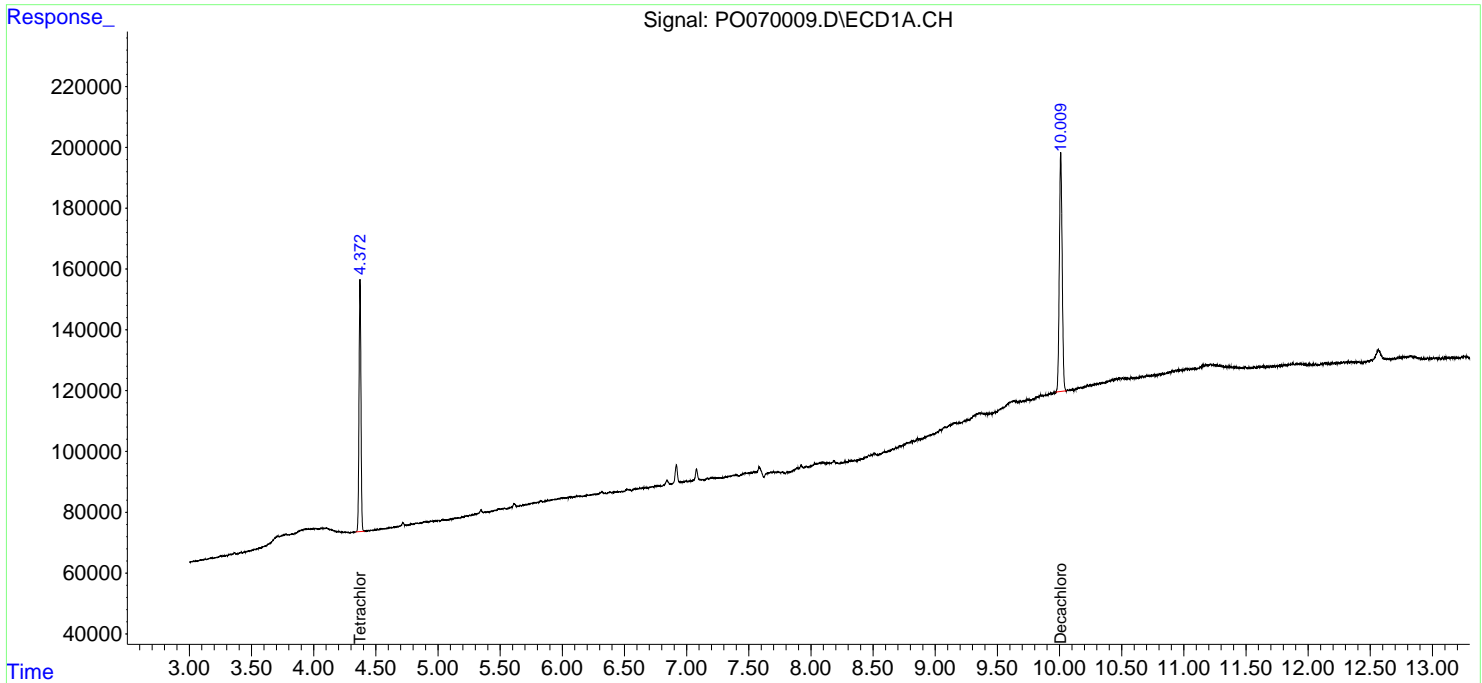
(f)=RT Delta > 1/2 Window (#)=Amounts differ by > 25% (m)=manual int.

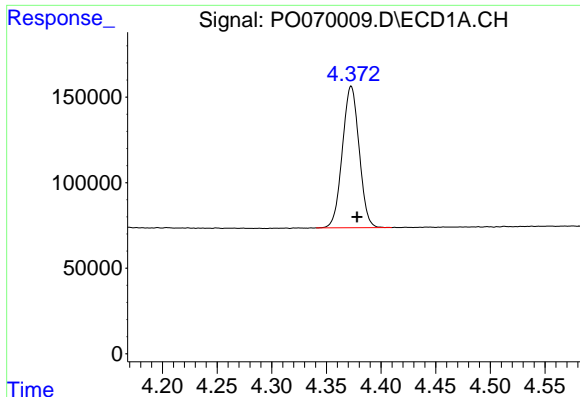
Data Path : Z:\pestpcbsrv\HPCHEM1\ECD_O\Data\P0072520\
 Data File : P0070009.D
 Signal(s) : Signal #1: ECD1A.CH Signal #2: ECD2B.CH
 Acq On : 24 Jul 2020 20:01
 Operator : DD\AJ
 Sample : L3412-01
 Misc :
 ALS Vial : 28 Sample Multiplier: 1

Instrument :
 ECD_O
 ClientSampleId :
 DUCK-BANK

Integration File signal 1: autoint1.e
 Integration File signal 2: autoint2.e
 Quant Time: Jul 25 00:04:54 2020
 Quant Method : Z:\pestpcbsrv\HPCHEM1\ECD_O\methods\P0072320.M
 Quant Title : GC EXTRACTABLES
 QLast Update : Thu Jul 23 02:12:36 2020
 Response via : Initial Calibration
 Integrator: ChemStation 6890 Scale Mode: Small noise peaks clipped

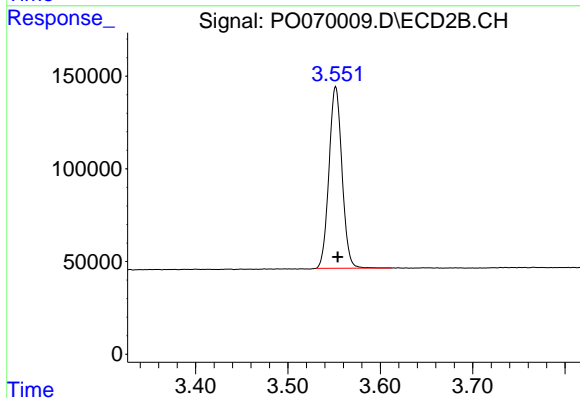
Volume Inj. : 2 µl
 Signal #1 Phase : ZB-MR1 Signal #2 Phase: ZB-MR2
 Signal #1 Info : 30Mx0.32mmx 0.50µ Signal #2 Info : 30M x 0.32mm x 0.25µm



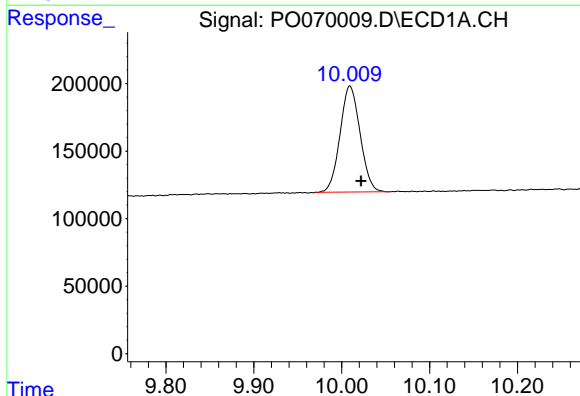


#1 Tetrachloro-m-xylene
 R.T.: 4.373 min
 Delta R.T.: -0.005 min
 Response: 883355
 Conc: 25.73 ng/ml

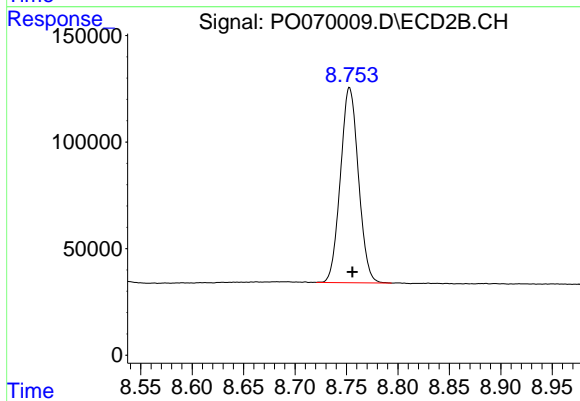
Instrument :
 ECD_O
 ClientSampleId :
 DUCK-BANK



#1 Tetrachloro-m-xylene
 R.T.: 3.552 min
 Delta R.T.: -0.002 min
 Response: 958601
 Conc: 26.59 ng/ml



#2 Decachlorobiphenyl
 R.T.: 10.009 min
 Delta R.T.: -0.013 min
 Response: 1242464
 Conc: 23.25 ng/ml



#2 Decachlorobiphenyl
 R.T.: 8.753 min
 Delta R.T.: -0.003 min
 Response: 1114569
 Conc: 21.85 ng/ml