

Data Path : Z:\pestpcbsrv\HPCHEM1\ECD_0\Data\P0072522\
 Data File : P0088326.D
 Signal(s) : Signal #1: ECD1A.ch Signal #2: ECD2B.ch
 Acq On : 25 Jul 2022 23:50
 Operator : YP/AJ
 Sample : AR1242CCC500
 Misc :
 ALS Vial : 4 Sample Multiplier: 1

Instrument :
 ECD_0
ClientSampleId :
 AR1242CCC500

Integration File signal 1: autoint1.e
 Integration File signal 2: autoint2.e
 Quant Time: Jul 26 03:54:31 2022
 Quant Method : Z:\pestpcbsrv\HPCHEM1\ECD_0\methods\P0071422.M
 Quant Title : GC EXTRACTABLES
 QLast Update : Fri Jul 15 03:57:23 2022
 Response via : Initial Calibration
 Integrator: ChemStation

Volume Inj. : 2 µl
 Signal #1 Phase : ZB-MR1 Signal #2 Phase: ZB-MR2
 Signal #1 Info : 30Mx0.32mmx 0.50µ Signal #2 Info : 30M x 0.32mm x 0.25µm

Compound	RT#1	RT#2	Resp#1	Resp#2	ng/ml	ng/ml

System Monitoring Compounds						
1) SA Tetrachlo...	4.446	3.606	136.7E6	52392392	53.565	55.531
2) SA Decachlor...	10.284	8.598	87970204	51390926	41.423	49.177
Target Compounds						
16) L4 AR-1242-1	5.620	4.681	33760877	15396815	494.526	529.224
17) L4 AR-1242-2	5.642	4.700	46885126	21390196	484.022	528.131
18) L4 AR-1242-3	5.705	4.875	29874077	11941887	492.380	540.469
19) L4 AR-1242-4	5.804	4.958	23804872	12360150	494.218	528.631
20) L4 AR-1242-5	6.545	5.481	25431008	15834105	482.896	590.805

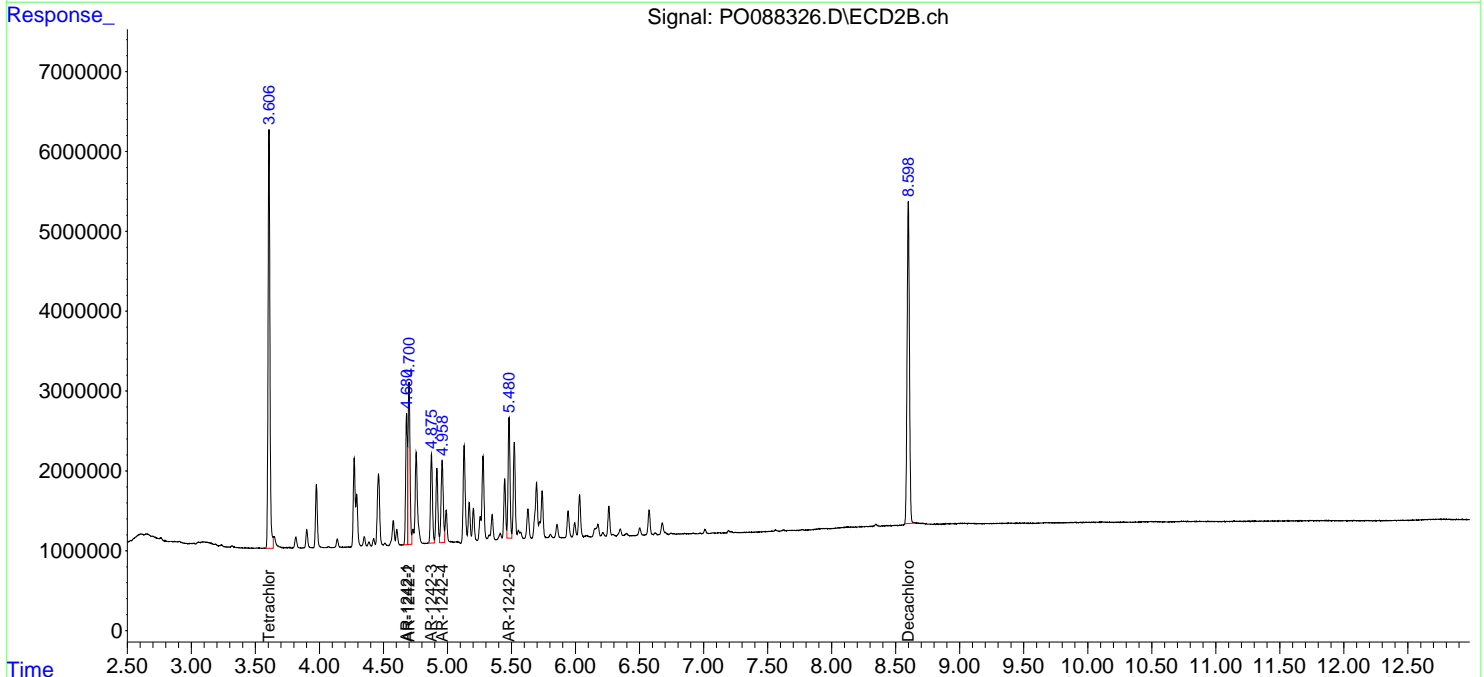
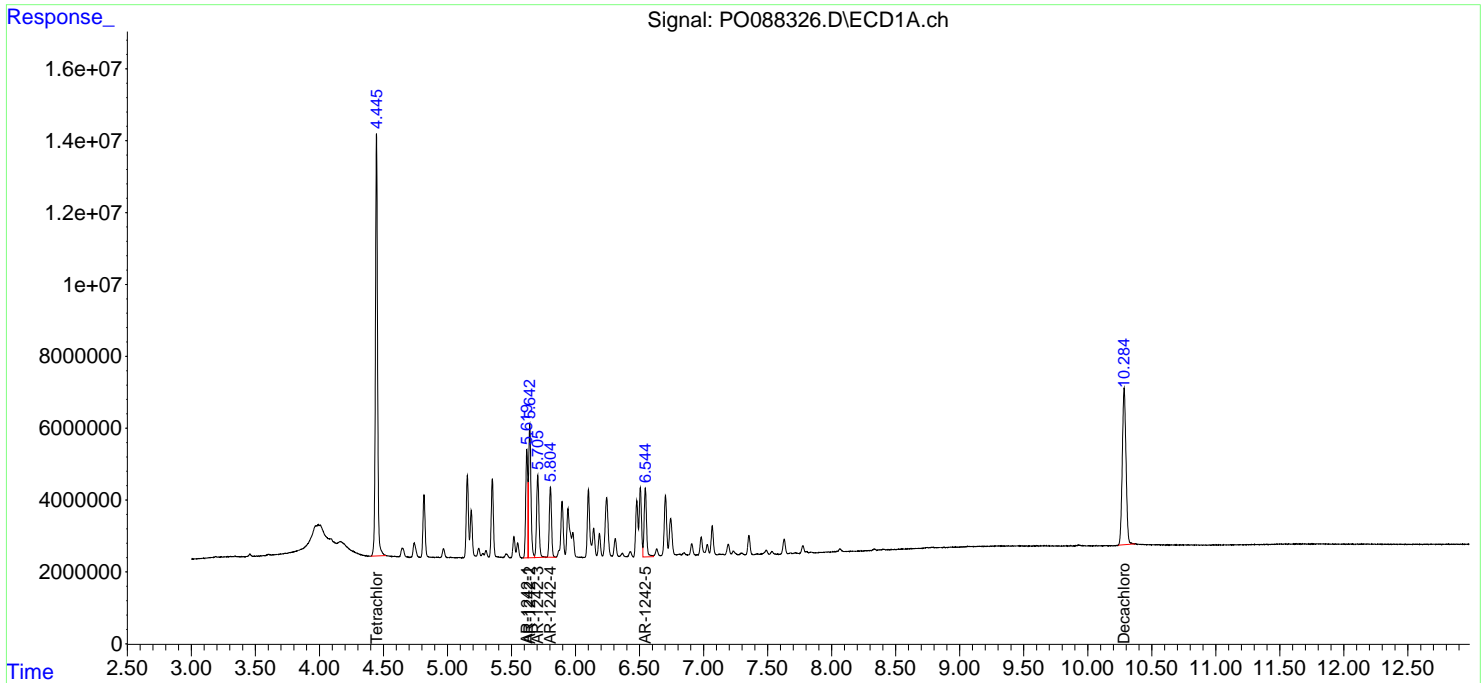
(f)=RT Delta > 1/2 Window (#)=Amounts differ by > 25% (m)=manual int.

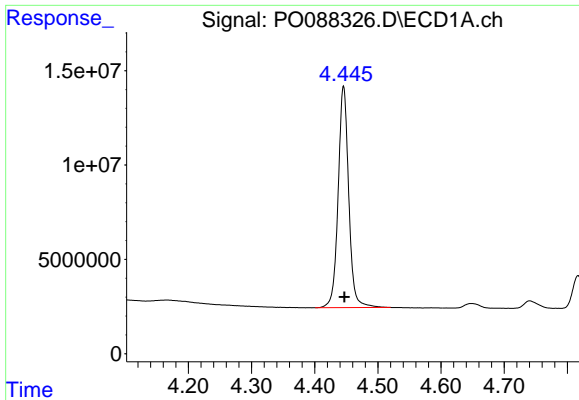
Data Path : Z:\pestpcbsrv\HPCHEM1\ECD_O\Data\P0072522\
 Data File : P0088326.D
 Signal(s) : Signal #1: ECD1A.ch Signal #2: ECD2B.ch
 Acq On : 25 Jul 2022 23:50
 Operator : YP/AJ
 Sample : AR1242CCC500
 Misc :
 ALS Vial : 4 Sample Multiplier: 1

Instrument :
 ECD_O
 ClientSampleId :
 AR1242CCC500

Integration File signal 1: autoint1.e
 Integration File signal 2: autoint2.e
 Quant Time: Jul 26 03:54:31 2022
 Quant Method : Z:\pestpcbsrv\HPCHEM1\ECD_O\methods\P0071422.M
 Quant Title : GC EXTRACTABLES
 QLast Update : Fri Jul 15 03:57:23 2022
 Response via : Initial Calibration
 Integrator: ChemStation

Volume Inj. : 2 µl
 Signal #1 Phase : ZB-MR1 Signal #2 Phase: ZB-MR2
 Signal #1 Info : 30Mx0.32mmx 0.50µ Signal #2 Info : 30M x 0.32mm x 0.25µm

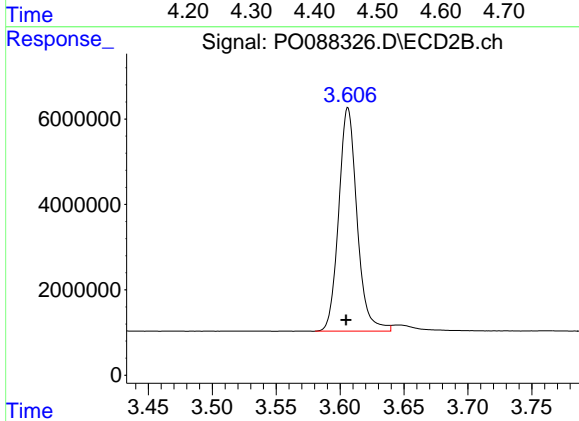




#1 Tetrachloro-m-xylene

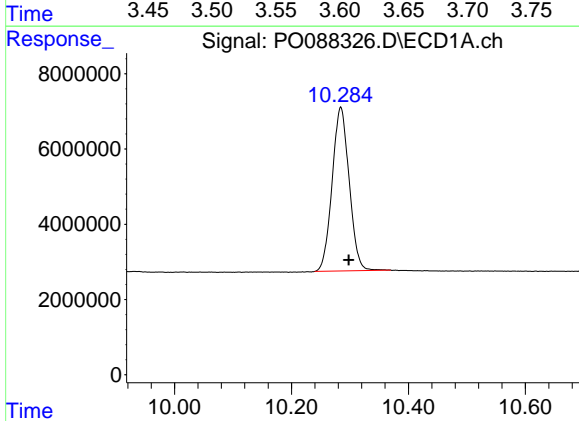
R.T.: 4.446 min
Delta R.T.: -0.001 min
Response: 136654089
Conc: 53.56 ng/ml

Instrument :
ECD_O
ClientSampleId :
AR1242CCC500



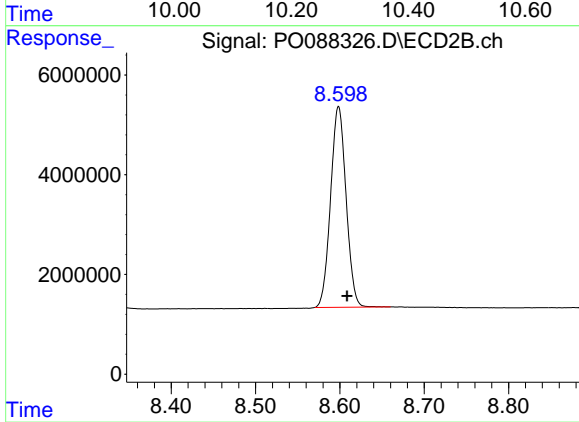
#1 Tetrachloro-m-xylene

R.T.: 3.606 min
Delta R.T.: 0.002 min
Response: 52392392
Conc: 55.53 ng/ml



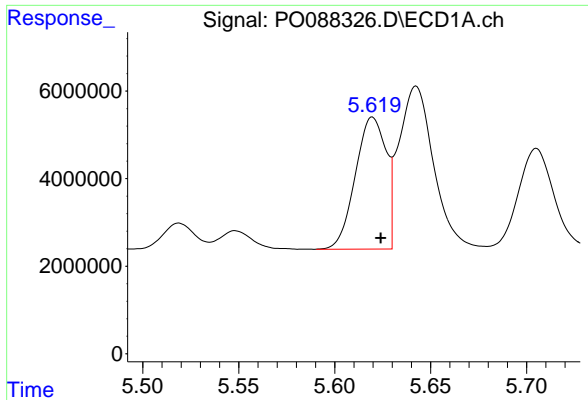
#2 Decachlorobiphenyl

R.T.: 10.284 min
Delta R.T.: -0.014 min
Response: 87970204
Conc: 41.42 ng/ml



#2 Decachlorobiphenyl

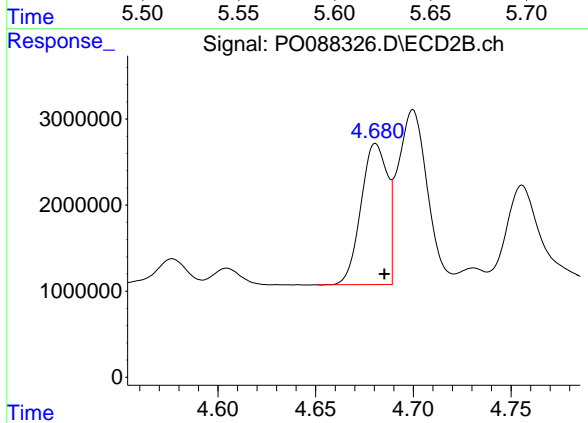
R.T.: 8.598 min
Delta R.T.: -0.010 min
Response: 51390926
Conc: 49.18 ng/ml



#16 AR-1242-1

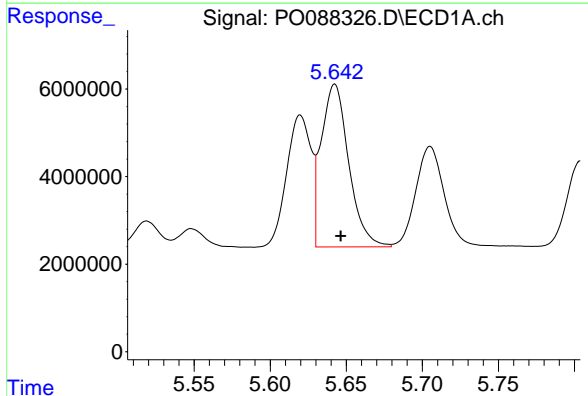
R.T.: 5.620 min
 Delta R.T.: -0.004 min
 Response: 33760877
 Conc: 494.53 ng/ml

Instrument :
 ECD_O
 ClientSampleId :
 AR1242CCC500



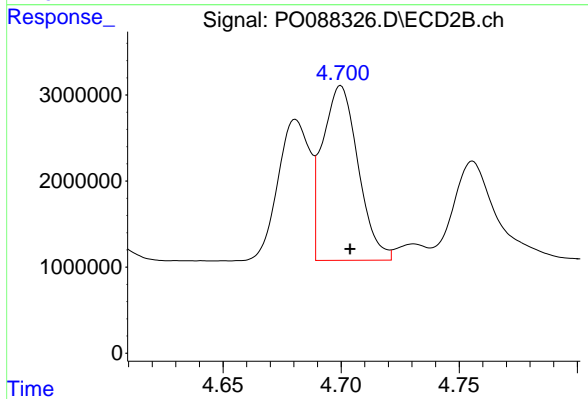
#16 AR-1242-1

R.T.: 4.681 min
 Delta R.T.: -0.004 min
 Response: 15396815
 Conc: 529.22 ng/ml



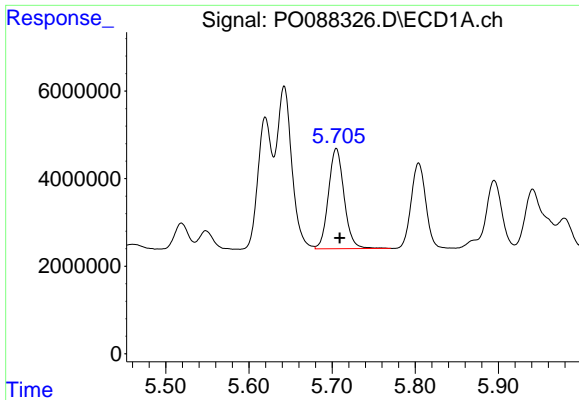
#17 AR-1242-2

R.T.: 5.642 min
 Delta R.T.: -0.004 min
 Response: 46885126
 Conc: 484.02 ng/ml



#17 AR-1242-2

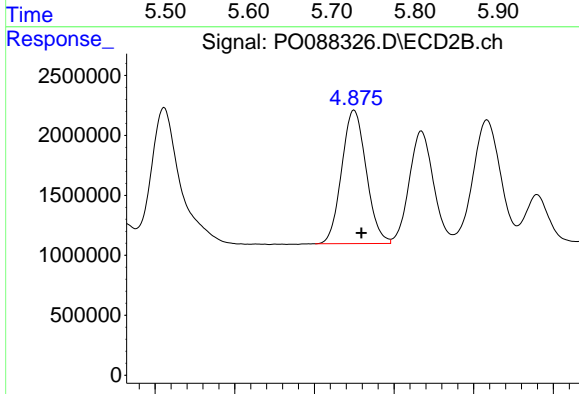
R.T.: 4.700 min
 Delta R.T.: -0.004 min
 Response: 21390196
 Conc: 528.13 ng/ml



#18 AR-1242-3

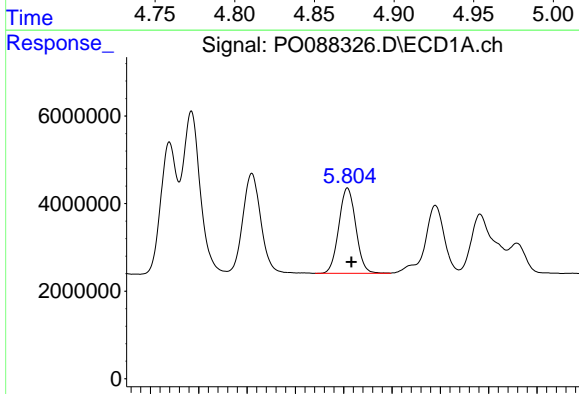
R.T.: 5.705 min
 Delta R.T.: -0.004 min
 Response: 29874077
 Conc: 492.38 ng/ml

Instrument :
 ECD_O
 ClientSampleId :
 AR1242CCC500



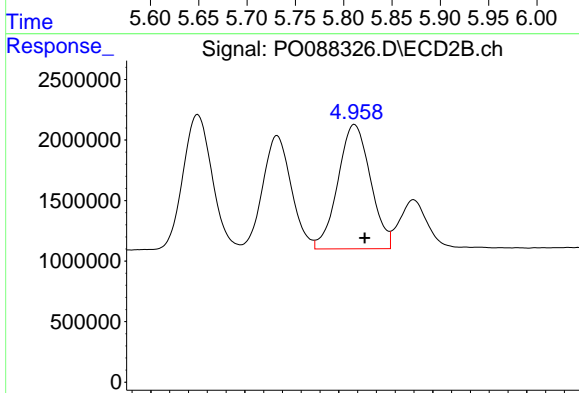
#18 AR-1242-3

R.T.: 4.875 min
 Delta R.T.: -0.005 min
 Response: 11941887
 Conc: 540.47 ng/ml



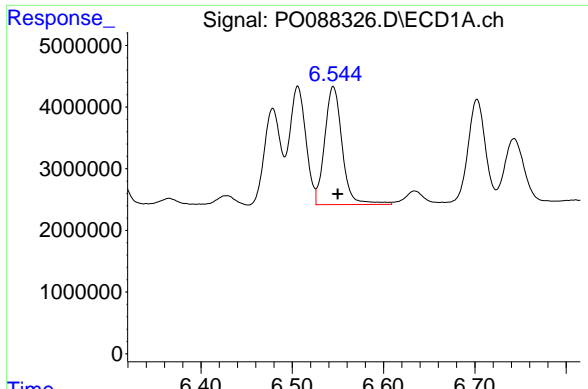
#19 AR-1242-4

R.T.: 5.804 min
 Delta R.T.: -0.004 min
 Response: 23804872
 Conc: 494.22 ng/ml



#19 AR-1242-4

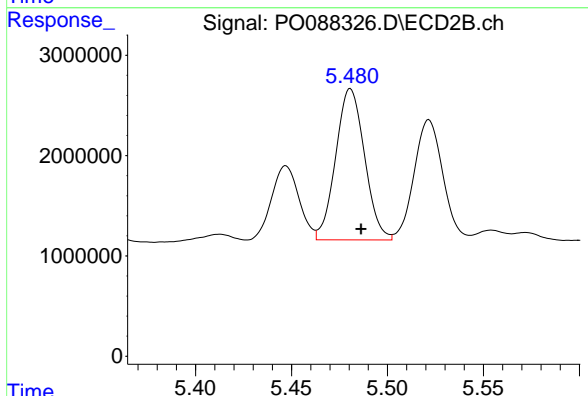
R.T.: 4.958 min
 Delta R.T.: -0.005 min
 Response: 12360150
 Conc: 528.63 ng/ml



#20 AR-1242-5

R.T.: 6.545 min
Delta R.T.: -0.005 min
Response: 25431008
Conc: 482.90 ng/ml

Instrument :
ECD_O
ClientSampleId :
AR1242CCC500



#20 AR-1242-5

R.T.: 5.481 min
Delta R.T.: -0.005 min
Response: 15834105
Conc: 590.81 ng/ml