

Data Path : Z:\pestpcbsrv\HPCHEM1\ECD_O\Data\P0072522\
 Data File : P0088327.D
 Signal(s) : Signal #1: ECD1A.ch Signal #2: ECD2B.ch
 Acq On : 26 Jul 2022 00:08
 Operator : YP/AJ
 Sample : AR1248CCC500
 Misc :
 ALS Vial : 5 Sample Multiplier: 1

Instrument :
 ECD_O
ClientSampleId :
 AR1248CCC500

Integration File signal 1: autoint1.e
 Integration File signal 2: autoint2.e
 Quant Time: Jul 26 03:55:23 2022
 Quant Method : Z:\pestpcbsrv\HPCHEM1\ECD_O\methods\P0071422.M
 Quant Title : GC EXTRACTABLES
 QLast Update : Fri Jul 15 03:57:23 2022
 Response via : Initial Calibration
 Integrator: ChemStation

Volume Inj. : 2 µl
 Signal #1 Phase : ZB-MR1 Signal #2 Phase: ZB-MR2
 Signal #1 Info : 30Mx0.32mmx 0.50µ Signal #2 Info : 30M x 0.32mm x 0.25µm

Compound	RT#1	RT#2	Resp#1	Resp#2	ng/ml	ng/ml

System Monitoring Compounds						
1) SA Tetrachlo...	4.447	3.607	133.7E6	53206968	52.392	56.394
2) SA Decachlor...	10.285	8.599	87442037	50664257	41.174	48.481
Target Compounds						
21) L5 AR-1248-1	5.620	4.682	26016906	12027243	486.949	525.063
22) L5 AR-1248-2	5.895	4.917	35954417	17078619	462.734	506.297
23) L5 AR-1248-3	6.101	4.959	38661788	17789916	461.856	511.891
24) L5 AR-1248-4	6.507	5.130	42003632	21311105	457.021	509.044
25) L5 AR-1248-5	6.546	5.522	40829335	20314502	453.980	563.830

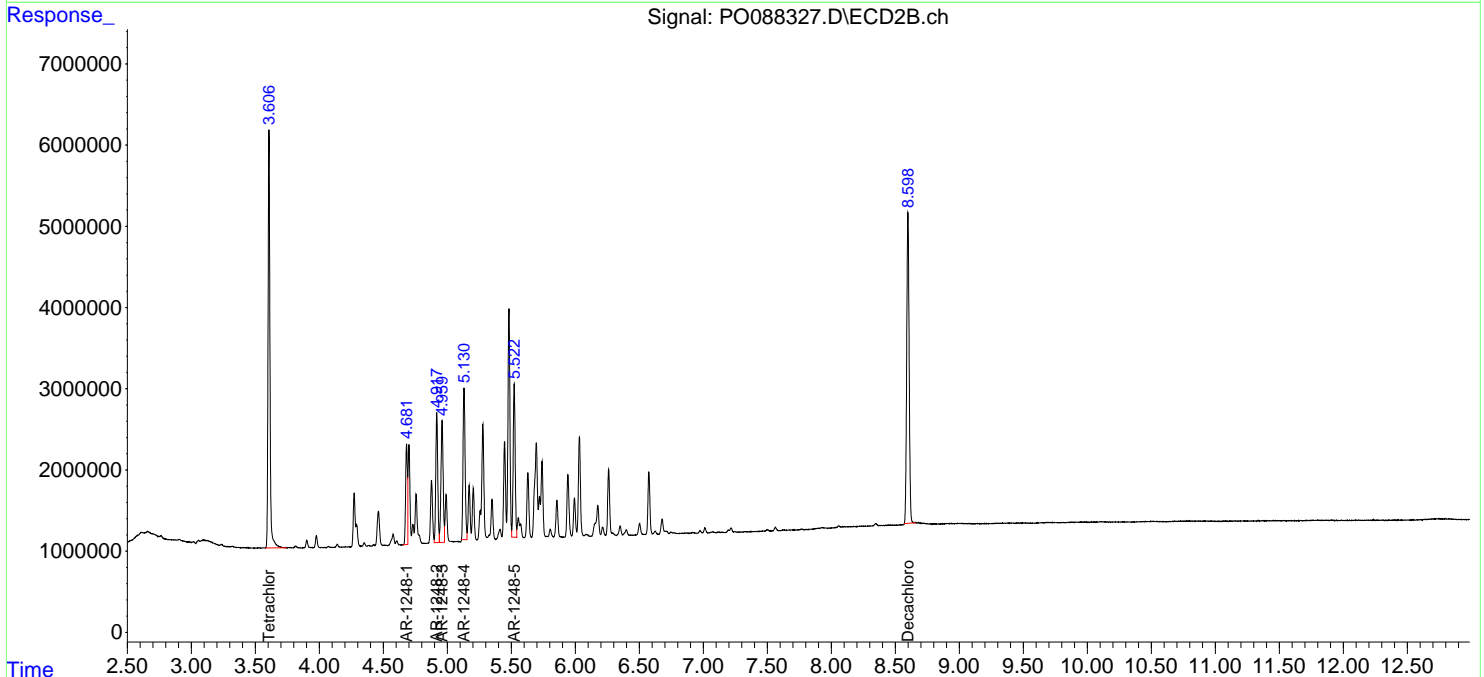
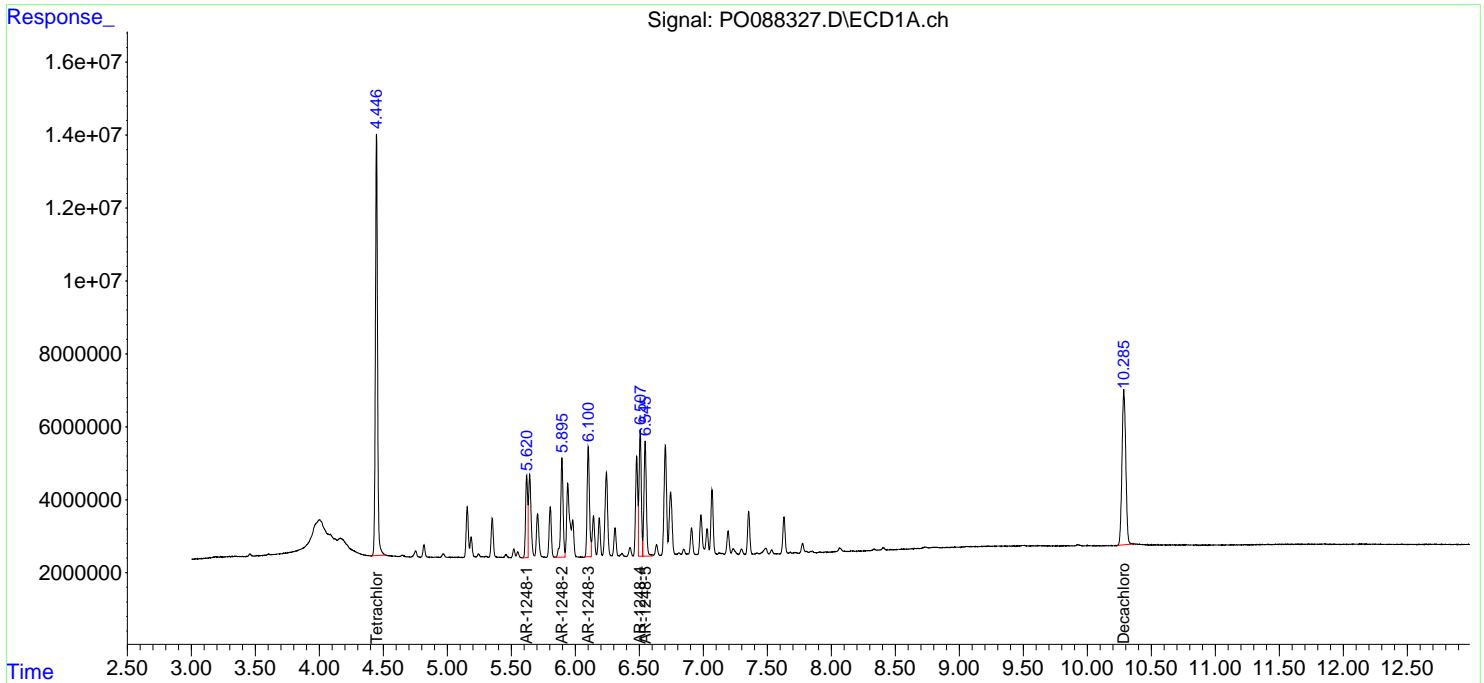
(f)=RT Delta > 1/2 Window (#)=Amounts differ by > 25% (m)=manual int.

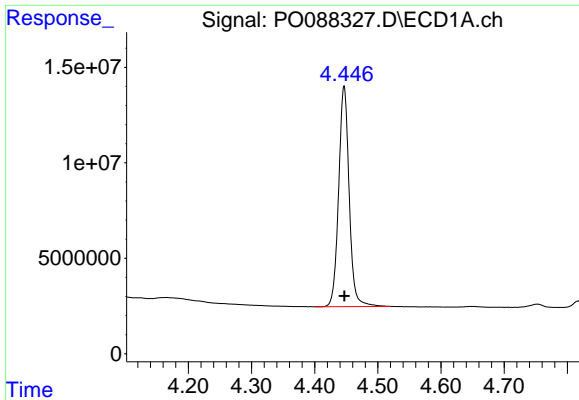
Data Path : Z:\pestpcbsrv\HPCHEM1\ECD_O\Data\P0072522\
Data File : P0088327.D
Signal(s) : Signal #1: ECD1A.ch Signal #2: ECD2B.ch
Acq On : 26 Jul 2022 00:08
Operator : YP/AJ
Sample : AR1248CCC500
Misc :
ALS Vial : 5 Sample Multiplier: 1

Instrument :
ECD_O
ClientSampleId :
AR1248CCC500

Integration File signal 1: autoint1.e
Integration File signal 2: autoint2.e
Quant Time: Jul 26 03:55:23 2022
Quant Method : Z:\pestpcbsrv\HPCHEM1\ECD_O\methods\P0071422.M
Quant Title : GC EXTRACTABLES
QLast Update : Fri Jul 15 03:57:23 2022
Response via : Initial Calibration
Integrator: ChemStation

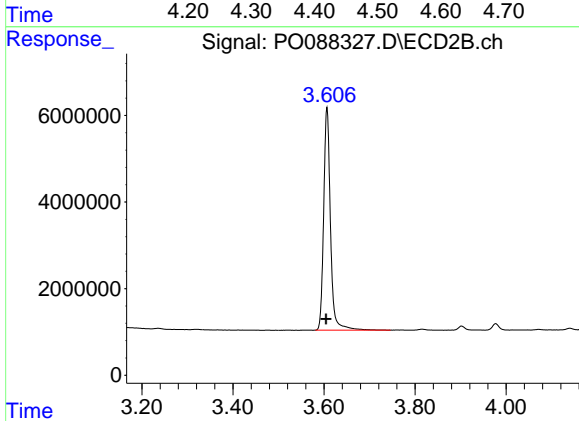
Volume Inj. : 2 µl
Signal #1 Phase : ZB-MR1 Signal #2 Phase: ZB-MR2
Signal #1 Info : 30Mx0.32mmx 0.50µ Signal #2 Info : 30M x 0.32mm x 0.25µm



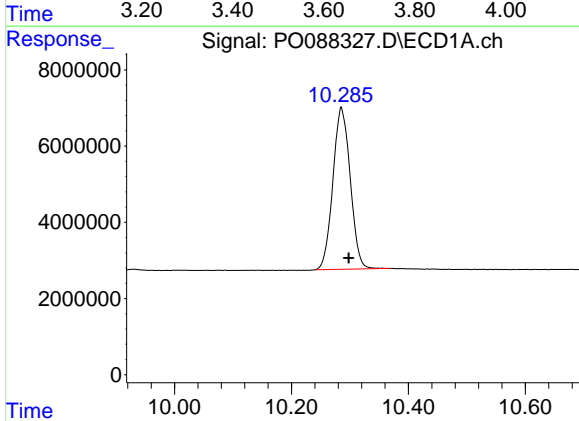


#1 Tetrachloro-m-xylene
 R.T.: 4.447 min
 Delta R.T.: 0.000 min
 Response: 133660660
 Conc: 52.39 ng/ml

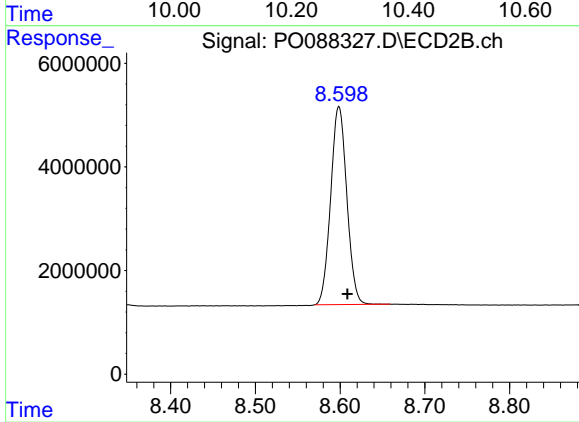
Instrument :
 ECD_O
 ClientSampleId :
 AR1248CCC500



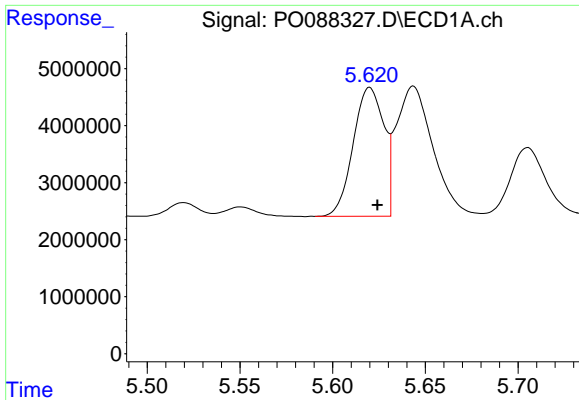
#1 Tetrachloro-m-xylene
 R.T.: 3.607 min
 Delta R.T.: 0.002 min
 Response: 53206968
 Conc: 56.39 ng/ml



#2 Decachlorobiphenyl
 R.T.: 10.285 min
 Delta R.T.: -0.013 min
 Response: 87442037
 Conc: 41.17 ng/ml



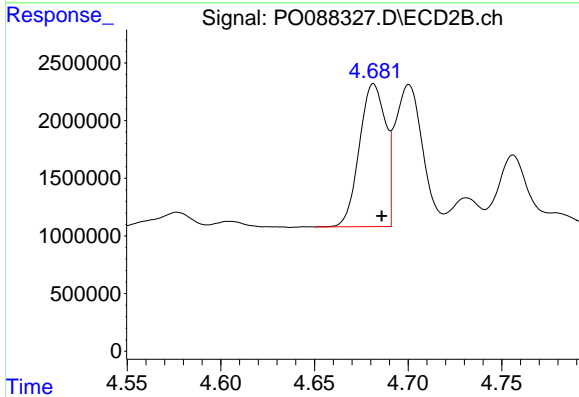
#2 Decachlorobiphenyl
 R.T.: 8.599 min
 Delta R.T.: -0.010 min
 Response: 50664257
 Conc: 48.48 ng/ml



#21 AR-1248-1

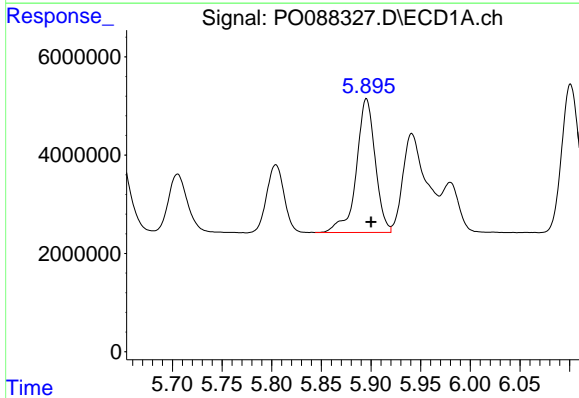
R.T.: 5.620 min
 Delta R.T.: -0.004 min
 Response: 26016906
 Conc: 486.95 ng/ml

Instrument :
 ECD_O
 ClientSampleId :
 AR1248CCC500



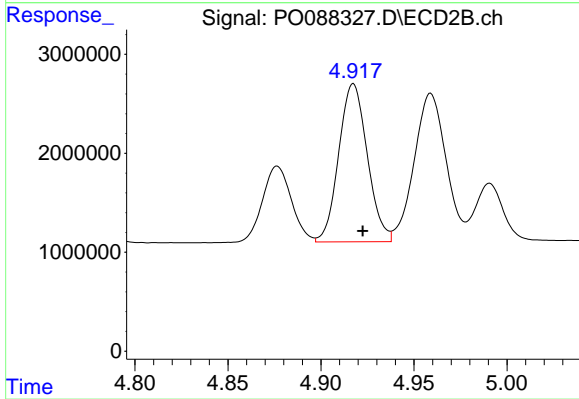
#21 AR-1248-1

R.T.: 4.682 min
 Delta R.T.: -0.004 min
 Response: 12027243
 Conc: 525.06 ng/ml



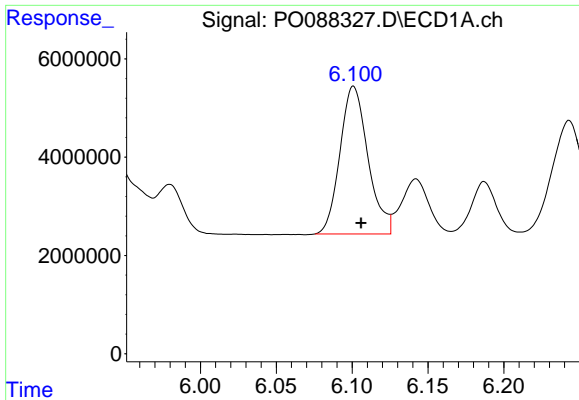
#22 AR-1248-2

R.T.: 5.895 min
 Delta R.T.: -0.005 min
 Response: 35954417
 Conc: 462.73 ng/ml



#22 AR-1248-2

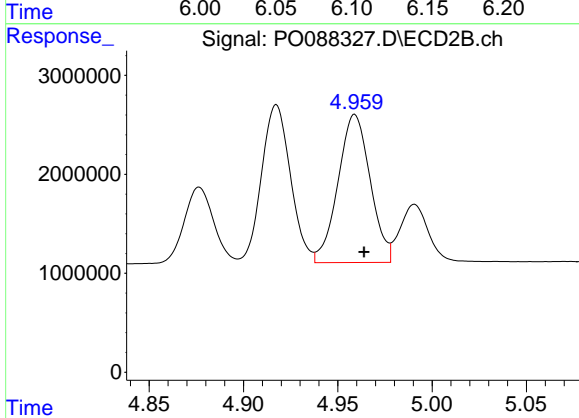
R.T.: 4.917 min
 Delta R.T.: -0.005 min
 Response: 17078619
 Conc: 506.30 ng/ml



#23 AR-1248-3

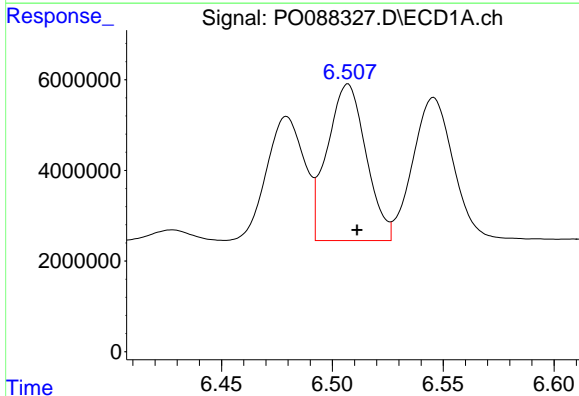
R.T.: 6.101 min
 Delta R.T.: -0.005 min
 Response: 38661788
 Conc: 461.86 ng/ml

Instrument :
 ECD_O
 ClientSampleId :
 AR1248CCC500



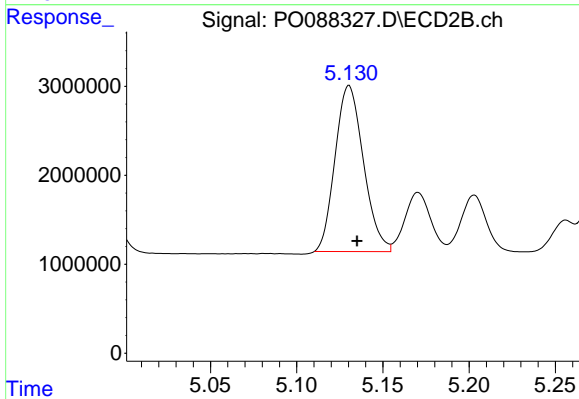
#23 AR-1248-3

R.T.: 4.959 min
 Delta R.T.: -0.005 min
 Response: 17789916
 Conc: 511.89 ng/ml



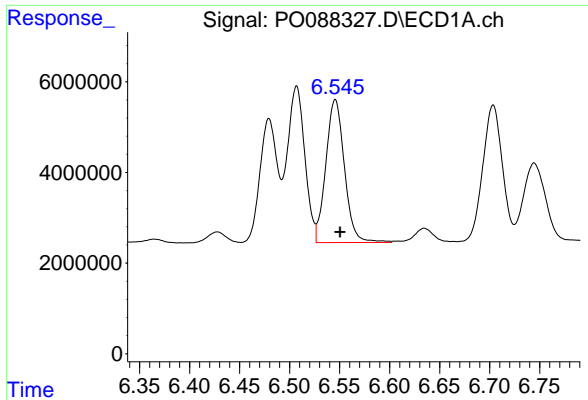
#24 AR-1248-4

R.T.: 6.507 min
 Delta R.T.: -0.004 min
 Response: 42003632
 Conc: 457.02 ng/ml



#24 AR-1248-4

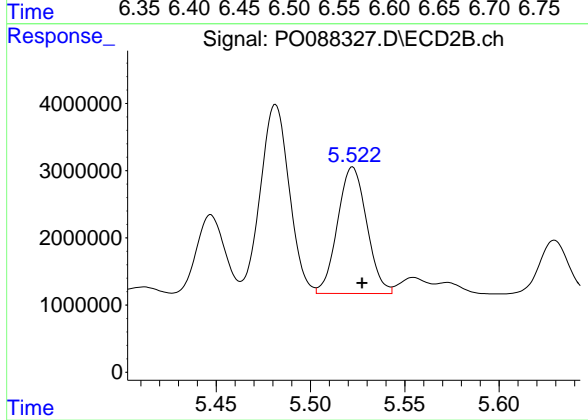
R.T.: 5.130 min
 Delta R.T.: -0.005 min
 Response: 21311105
 Conc: 509.04 ng/ml



#25 AR-1248-5

R.T.: 6.546 min
Delta R.T.: -0.005 min
Response: 40829335
Conc: 453.98 ng/ml

Instrument :
ECD_O
ClientSampleId :
AR1248CCC500



#25 AR-1248-5

R.T.: 5.522 min
Delta R.T.: -0.005 min
Response: 20314502
Conc: 563.83 ng/ml