

Data Path : Z:\pestpcbsrv\HPCHEM1\ECD_0\Data\P0072621\
 Data File : P0079839.D
 Signal(s) : Signal #1: ECD1A.CH Signal #2: ECD2B.CH
 Acq On : 26 Jul 2021 14:10
 Operator : DD\AJ
 Sample : M2940-08
 Misc : AR1221 LOD 25 PPB
 ALS Vial : 15 Sample Multiplier: 1

Instrument :
 ECD_0
 ClientSampleId :
 LOQ-WATER-02-QT3-2021

Integration File signal 1: autoint1.e
 Integration File signal 2: autoint2.e
 Quant Time: Jul 27 04:49:26 2021
 Quant Method : Z:\pestpcbsrv\HPCHEM1\ECD_0\methods\P0072221.M
 Quant Title : GC EXTRACTABLES
 QLast Update : Fri Jul 23 05:30:42 2021
 Response via : Initial Calibration
 Integrator: ChemStation 6890 Scale Mode: Small noise peaks clipped

Volume Inj. : 2 µl
 Signal #1 Phase : ZB-MR1 Signal #2 Phase: ZB-MR2
 Signal #1 Info : 30Mx0.32mmx 0.50µ Signal #2 Info : 30M x 0.32mm x 0.25µm

Compound	RT#1	RT#2	Resp#1	Resp#2	ng/ml	ng/ml

System Monitoring Compounds						
1) SA Tetrachlo...	5.002	4.121	928321	385638	16.416	17.346
2) SA Decachlor...	11.116	9.535	776695	385169	19.654	22.457
Target Compounds						
8) L2 AR-1221-1	5.255	4.386	34208	15814	57.293	60.943
9) L2 AR-1221-2	5.356	4.485	22551	16050	50.562	84.481 #
10) L2 AR-1221-3	5.442	4.577	73690	37532	50.516	60.315
11) L3 AR-1232-1	5.442	4.577	73690	37532	56.152	67.572
28) L6 AR-1254-3	7.873	0.000	138961	0	43.281	N.D. #

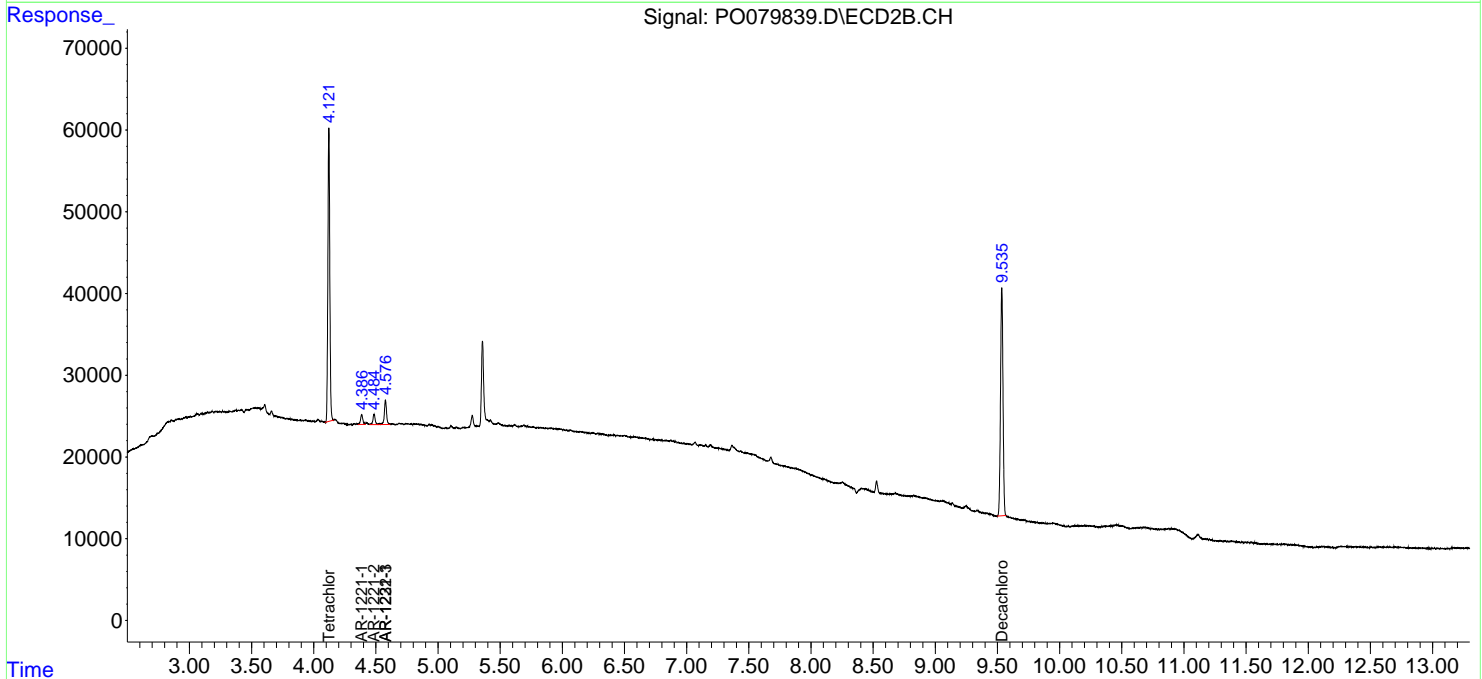
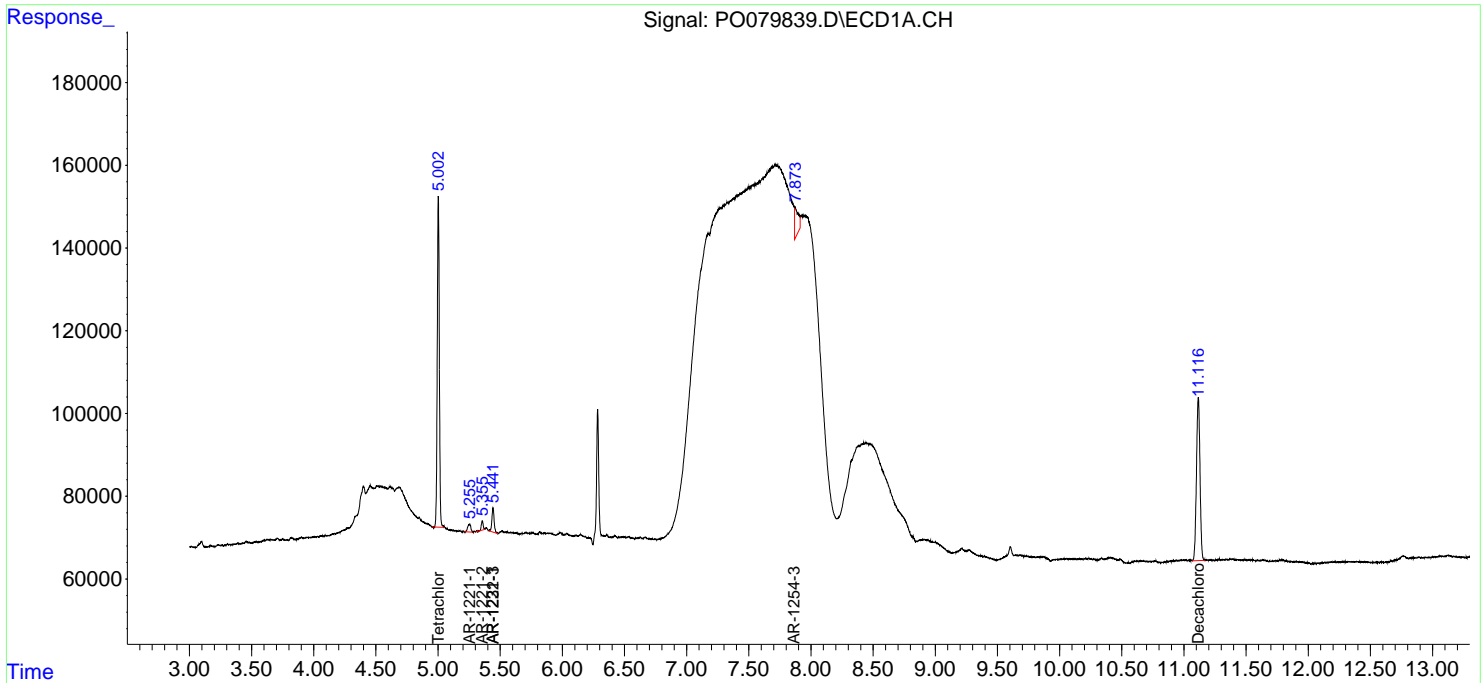
(f)=RT Delta > 1/2 Window (#)=Amounts differ by > 25% (m)=manual int.

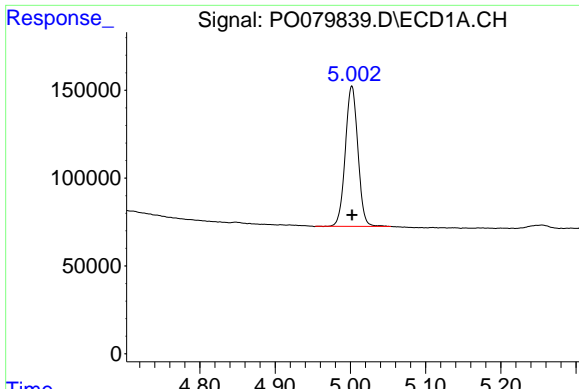
Data Path : Z:\pestpcbsrv\HPCHEM1\ECD_O\Data\P0072621\
 Data File : P0079839.D
 Signal(s) : Signal #1: ECD1A.CH Signal #2: ECD2B.CH
 Acq On : 26 Jul 2021 14:10
 Operator : DD\AJ
 Sample : M2940-08
 Misc : AR1221 LOD 25 PPB
 ALS Vial : 15 Sample Multiplier: 1

Instrument :
 ECD_O
 ClientSampleId :
 LOQ-WATER-02-QT3-2021

Integration File signal 1: autoint1.e
 Integration File signal 2: autoint2.e
 Quant Time: Jul 27 04:49:26 2021
 Quant Method : Z:\pestpcbsrv\HPCHEM1\ECD_O\methods\P0072221.M
 Quant Title : GC EXTRACTABLES
 QLast Update : Fri Jul 23 05:30:42 2021
 Response via : Initial Calibration
 Integrator: ChemStation 6890 Scale Mode: Small noise peaks clipped

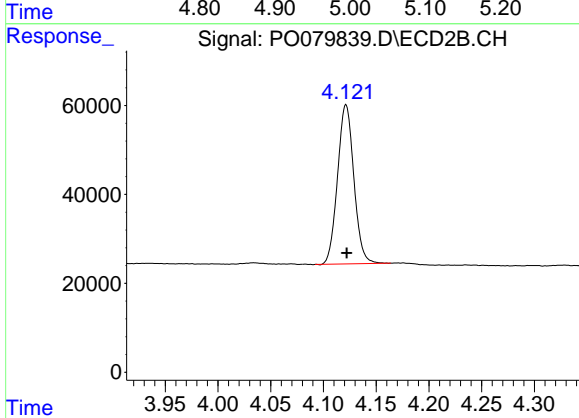
Volume Inj. : 2 µl
 Signal #1 Phase : ZB-MR1 Signal #2 Phase: ZB-MR2
 Signal #1 Info : 30Mx0.32mmx 0.50µ Signal #2 Info : 30M x 0.32mm x 0.25µm



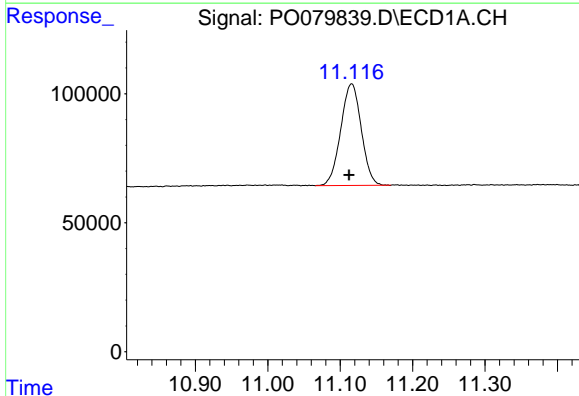


#1 Tetrachloro-m-xylene
 R.T.: 5.002 min
 Delta R.T.: 0.000 min
 Response: 928321
 Conc: 16.42 ng/ml

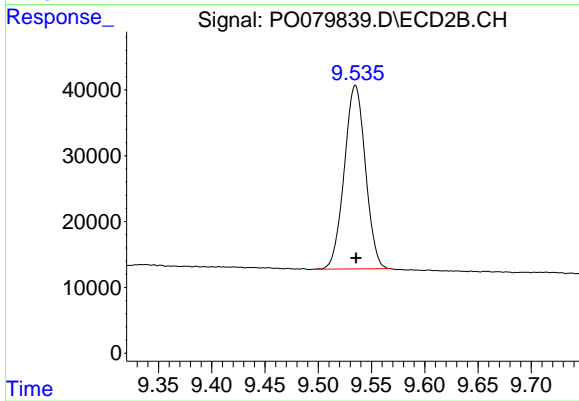
Instrument :
 ECD_O
 ClientSampleId :
 LOQ-WATER-02-QT3-2021



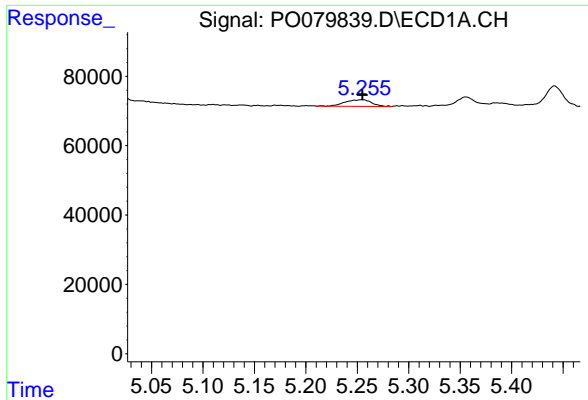
#1 Tetrachloro-m-xylene
 R.T.: 4.121 min
 Delta R.T.: 0.000 min
 Response: 385638
 Conc: 17.35 ng/ml



#2 Decachlorobiphenyl
 R.T.: 11.116 min
 Delta R.T.: 0.004 min
 Response: 776695
 Conc: 19.65 ng/ml

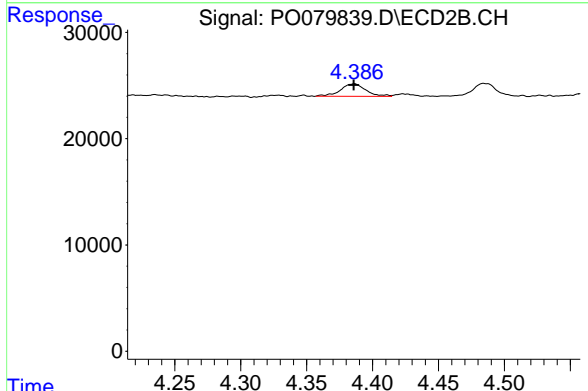


#2 Decachlorobiphenyl
 R.T.: 9.535 min
 Delta R.T.: 0.000 min
 Response: 385169
 Conc: 22.46 ng/ml

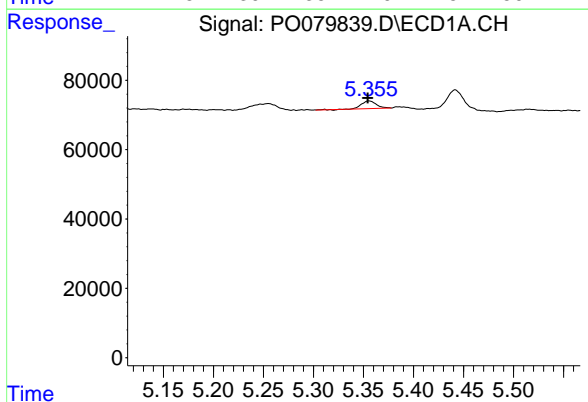


#8 AR-1221-1
 R.T.: 5.255 min
 Delta R.T.: 0.000 min
 Response: 34208
 Conc: 57.29 ng/ml

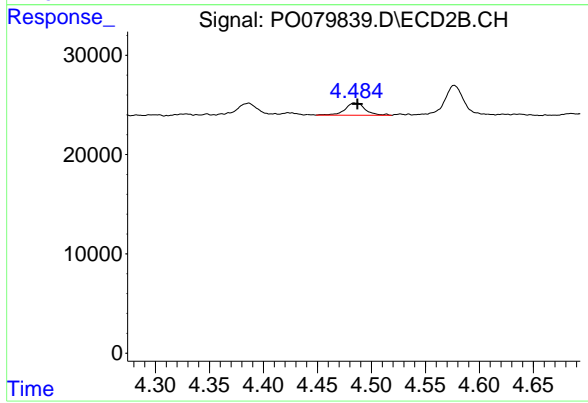
Instrument :
 ECD_O
ClientSampleId :
 LOQ-WATER-02-QT3-2021



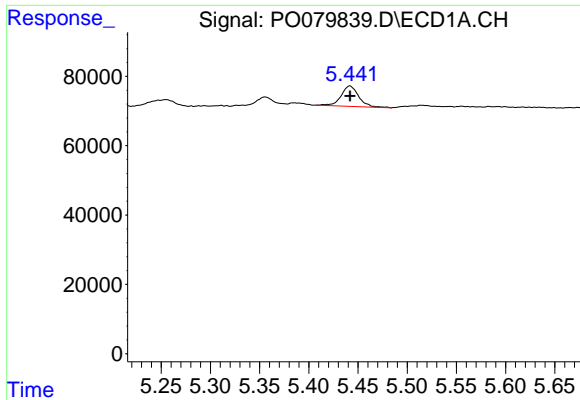
#8 AR-1221-1
 R.T.: 4.386 min
 Delta R.T.: 0.000 min
 Response: 15814
 Conc: 60.94 ng/ml



#9 AR-1221-2
 R.T.: 5.356 min
 Delta R.T.: 0.002 min
 Response: 22551
 Conc: 50.56 ng/ml

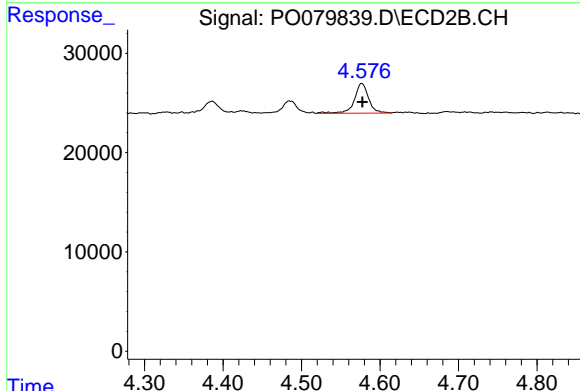


#9 AR-1221-2
 R.T.: 4.485 min
 Delta R.T.: -0.002 min
 Response: 16050
 Conc: 84.48 ng/ml

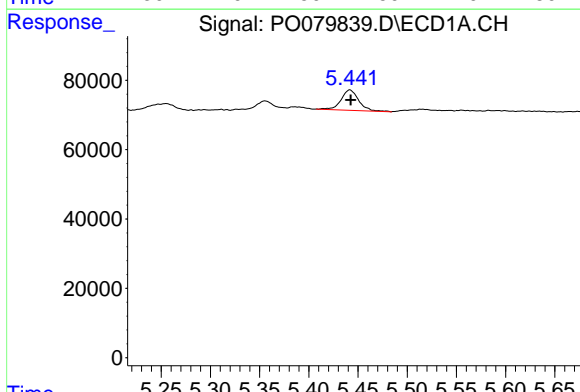


#10 AR-1221-3
 R.T.: 5.442 min
 Delta R.T.: 0.000 min
 Response: 73690
 Conc: 50.52 ng/ml

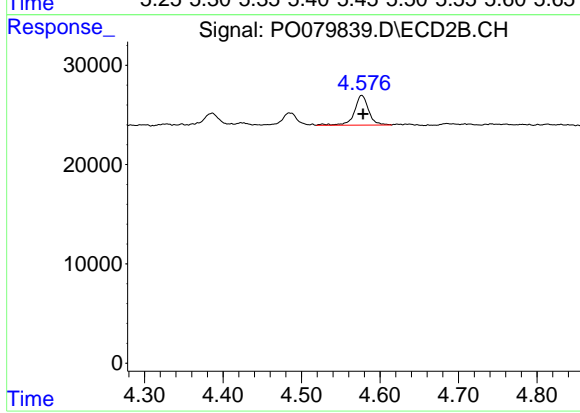
Instrument :
 ECD_O
ClientSampleId :
 LOQ-WATER-02-QT3-2021



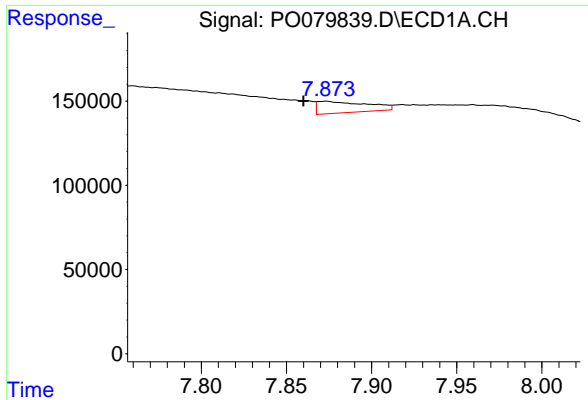
#10 AR-1221-3
 R.T.: 4.577 min
 Delta R.T.: 0.000 min
 Response: 37532
 Conc: 60.32 ng/ml



#11 AR-1232-1
 R.T.: 5.442 min
 Delta R.T.: 0.000 min
 Response: 73690
 Conc: 56.15 ng/ml



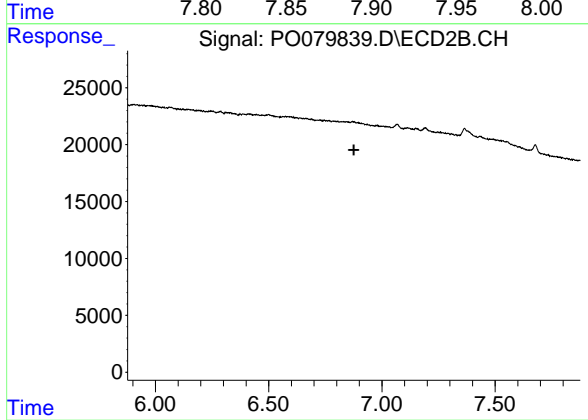
#11 AR-1232-1
 R.T.: 4.577 min
 Delta R.T.: -0.002 min
 Response: 37532
 Conc: 67.57 ng/ml



#28 AR-1254-3

R.T.: 7.873 min
 Delta R.T.: 0.013 min
 Response: 138961
 Conc: 43.28 ng/ml

Instrument :
 ECD_O
 ClientSampleId :
 LOQ-WATER-02-QT3-2021



#28 AR-1254-3

R.T.: 0.000 min
 Exp R.T. : 6.876 min
 Response: 0
 Conc: N.D.