

Data Path : Z:\pestpcbsrv\HPCHEM1\ECD_0\Data\P0072624\
 Data File : P0104971.D
 Signal(s) : Signal #1: ECD1A.ch Signal #2: ECD2B.ch
 Acq On : 26 Jul 2024 07:22
 Operator : YP/AJ
 Sample : AR1660CCC500
 Misc :
 ALS Vial : 3 Sample Multiplier: 1

Instrument :
 ECD_0
 ClientSampleId :
 AR1660CCC500

Integration File signal 1: autoint1.e
 Integration File signal 2: autoint2.e
 Quant Time: Jul 26 09:04:47 2024
 Quant Method : Z:\pestpcbsrv\HPCHEM1\ECD_0\methods\P0070224.M
 Quant Title : GC EXTRACTABLES
 QLast Update : Tue Jul 02 16:29:20 2024
 Response via : Initial Calibration
 Integrator: ChemStation

Volume Inj. : 2 µl
 Signal #1 Phase : ZB-MR1 Signal #2 Phase: ZB-MR2
 Signal #1 Info : 30Mx0.32mmx 0.50µ Signal #2 Info : 30M x 0.32mm x 0.25µm

Compound	RT#1	RT#2	Resp#1	Resp#2	ng/ml	ng/ml

System Monitoring Compounds						
1) SA Tetrachlo...	4.427	3.540	384.0E6	150.8E6	42.888	46.231
2) SA Decachlor...	10.212	8.434	219.8E6	63027496	35.837	30.055
Target Compounds						
3) L1 AR-1016-1	5.596	4.595	106.6E6	48277164	358.444	425.681
4) L1 AR-1016-2	5.619	4.612	155.8E6	64599920	374.174	415.771
5) L1 AR-1016-3	5.682	4.785	94121612	34599394	369.042	419.156
6) L1 AR-1016-4	5.781	4.826	76656985	27319114	357.671	420.269
7) L1 AR-1016-5	6.077	5.035	70796918	36081868	338.977	408.224
31) L7 AR-1260-1	7.211	6.050	124.0E6	58734209	343.594	366.793
32) L7 AR-1260-2	7.470	6.236	147.0E6	69244805	348.301	360.445
33) L7 AR-1260-3	7.832	6.386	101.0E6	61190589	341.781	344.037
34) L7 AR-1260-4	8.059	6.852	124.8E6	45267460	352.232	337.898
35) L7 AR-1260-5	8.382	7.092	236.4E6	99910180	362.785	326.445

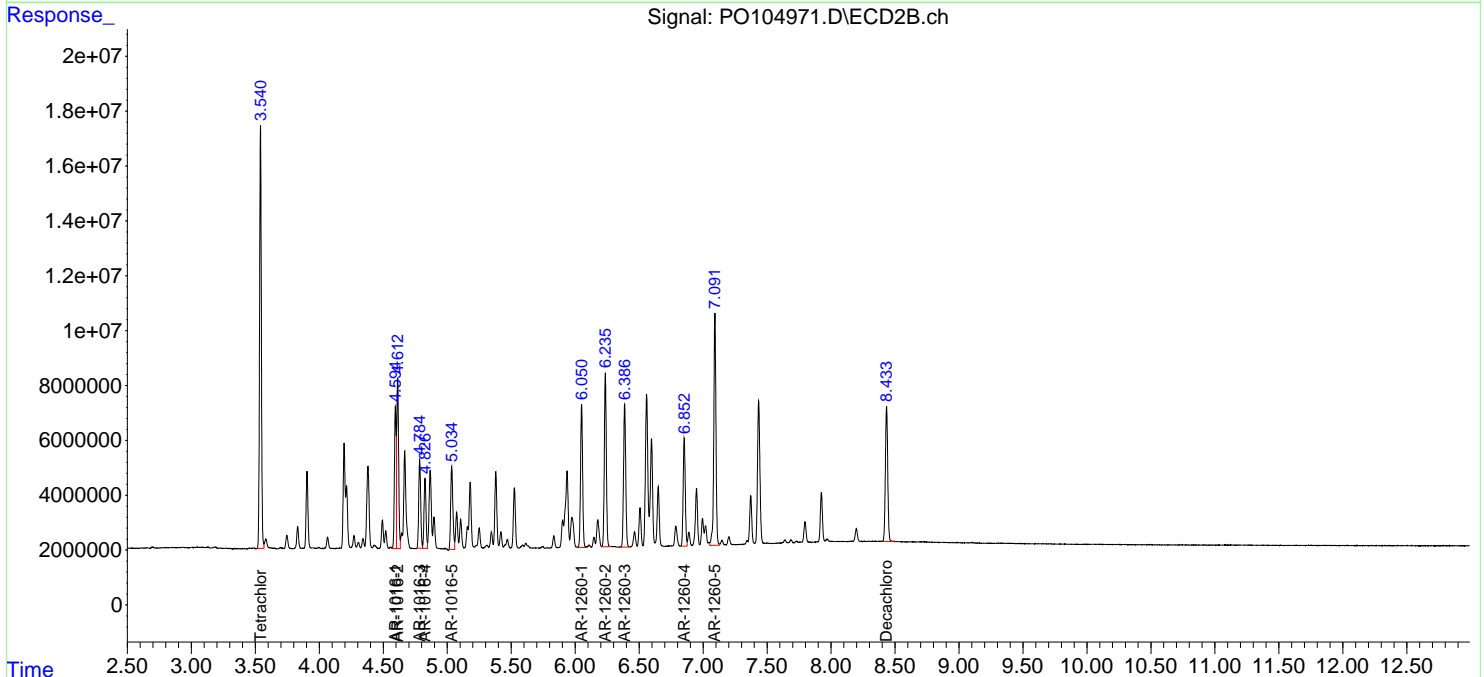
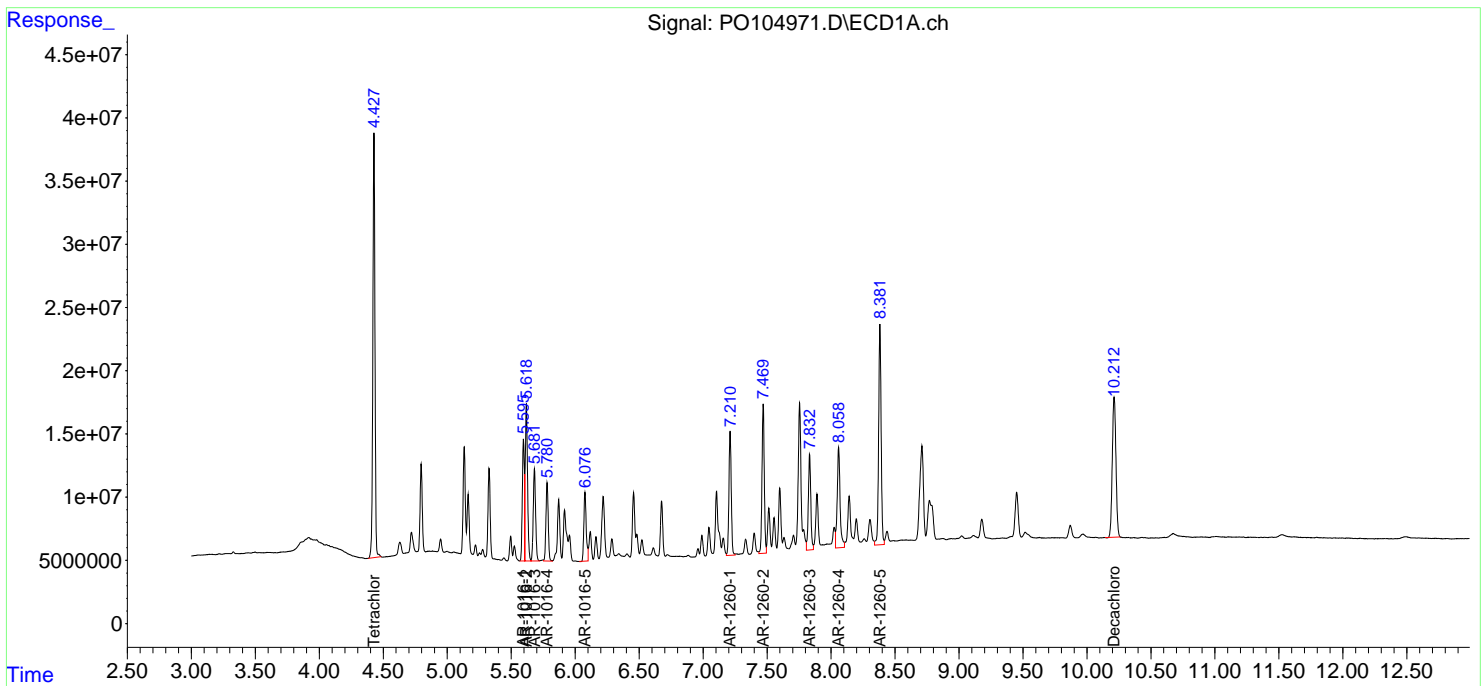
(f)=RT Delta > 1/2 Window (#)=Amounts differ by > 25% (m)=manual int.

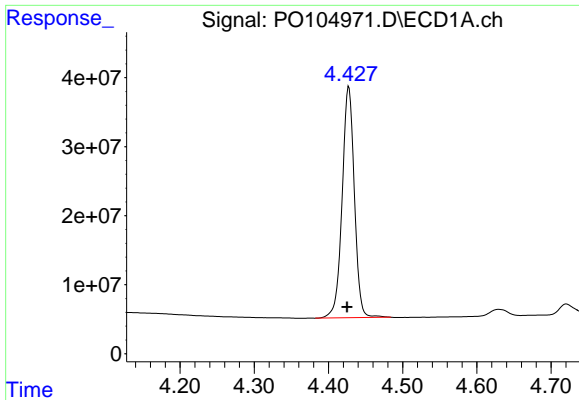
Data Path : Z:\pestpcbsrv\HPCHEM1\ECD_O\Data\PO072624\
 Data File : PO104971.D
 Signal(s) : Signal #1: ECD1A.ch Signal #2: ECD2B.ch
 Acq On : 26 Jul 2024 07:22
 Operator : YP/AJ
 Sample : AR1660CCC500
 Misc :
 ALS Vial : 3 Sample Multiplier: 1

Instrument :
 ECD_O
 ClientSampleId :
 AR1660CCC500

Integration File signal 1: autoint1.e
 Integration File signal 2: autoint2.e
 Quant Time: Jul 26 09:04:47 2024
 Quant Method : Z:\pestpcbsrv\HPCHEM1\ECD_O\methods\PO070224.M
 Quant Title : GC EXTRACTABLES
 QLast Update : Tue Jul 02 16:29:20 2024
 Response via : Initial Calibration
 Integrator: ChemStation

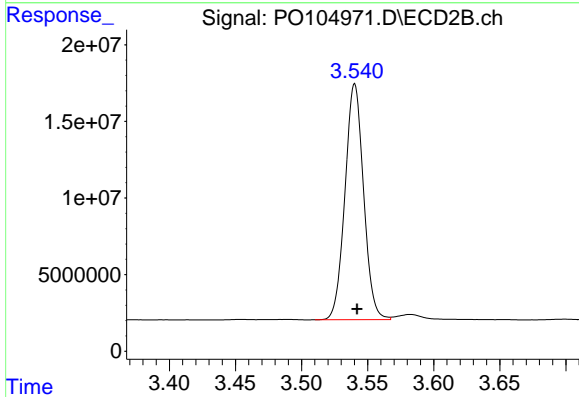
Volume Inj. : 2 µl
 Signal #1 Phase : ZB-MR1 Signal #2 Phase: ZB-MR2
 Signal #1 Info : 30Mx0.32mmx 0.50µ Signal #2 Info : 30M x 0.32mm x 0.25µm



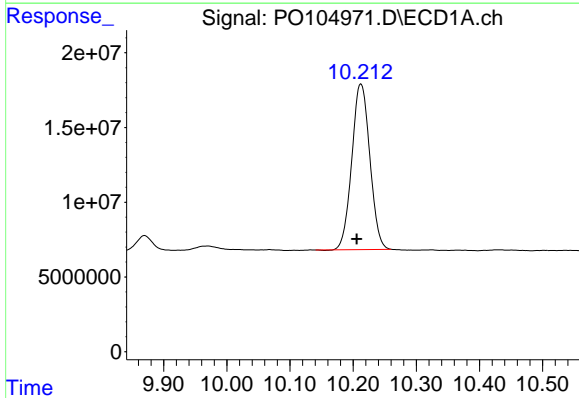


#1 Tetrachloro-m-xylene
 R.T.: 4.427 min
 Delta R.T.: 0.002 min
 Response: 383998809
 Conc: 42.89 ng/ml

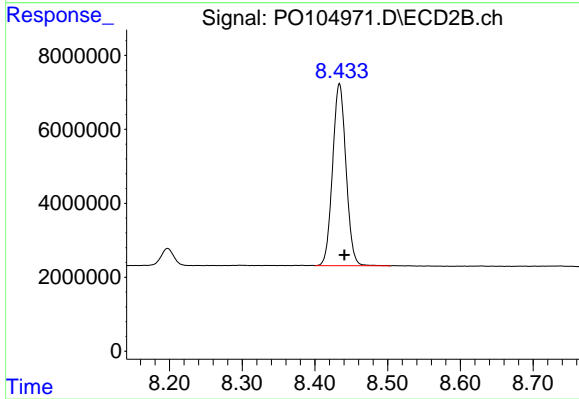
Instrument :
 ECD_O
 ClientSampleId :
 AR1660CCC500



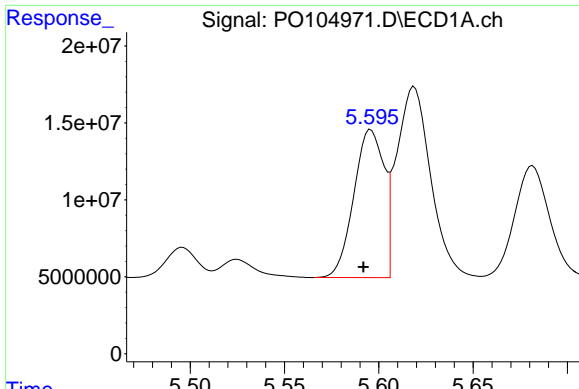
#1 Tetrachloro-m-xylene
 R.T.: 3.540 min
 Delta R.T.: -0.002 min
 Response: 150834325
 Conc: 46.23 ng/ml



#2 Decachlorobiphenyl
 R.T.: 10.212 min
 Delta R.T.: 0.007 min
 Response: 219774541
 Conc: 35.84 ng/ml



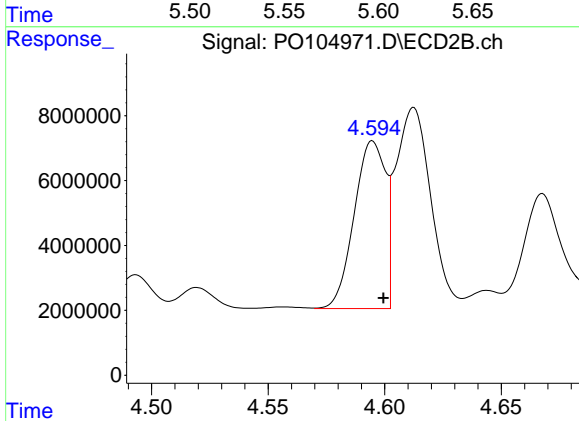
#2 Decachlorobiphenyl
 R.T.: 8.434 min
 Delta R.T.: -0.007 min
 Response: 63027496
 Conc: 30.05 ng/ml



#3 AR-1016-1

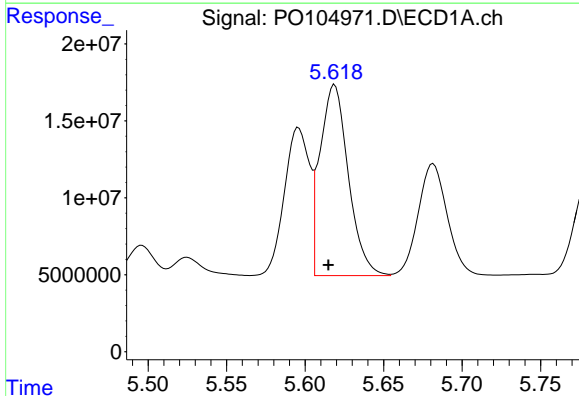
R.T.: 5.596 min
 Delta R.T.: 0.004 min
 Response: 106646448
 Conc: 358.44 ng/ml

Instrument :
 ECD_O
 ClientSampleId :
 AR1660CCC500



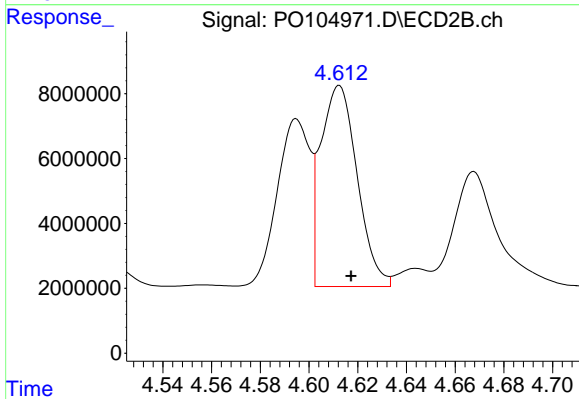
#3 AR-1016-1

R.T.: 4.595 min
 Delta R.T.: -0.005 min
 Response: 48277164
 Conc: 425.68 ng/ml



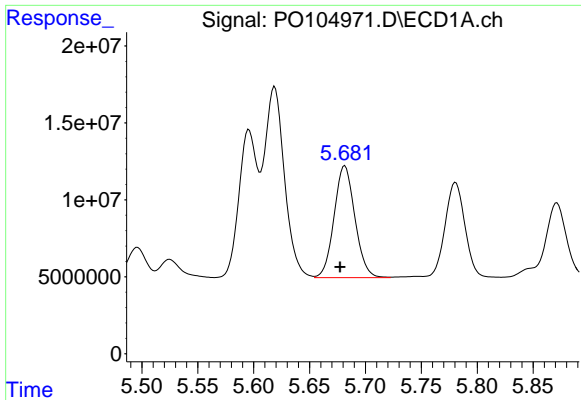
#4 AR-1016-2

R.T.: 5.619 min
 Delta R.T.: 0.004 min
 Response: 155767162
 Conc: 374.17 ng/ml



#4 AR-1016-2

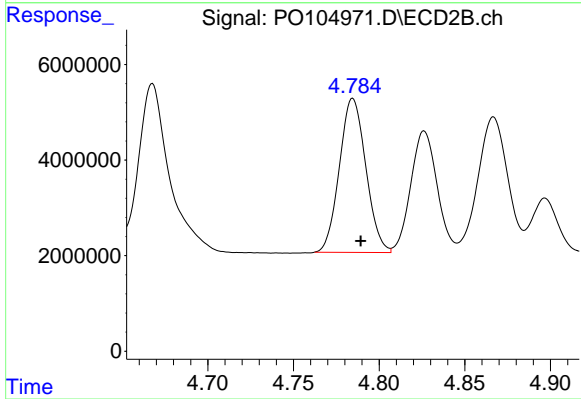
R.T.: 4.612 min
 Delta R.T.: -0.005 min
 Response: 64599920
 Conc: 415.77 ng/ml



#5 AR-1016-3

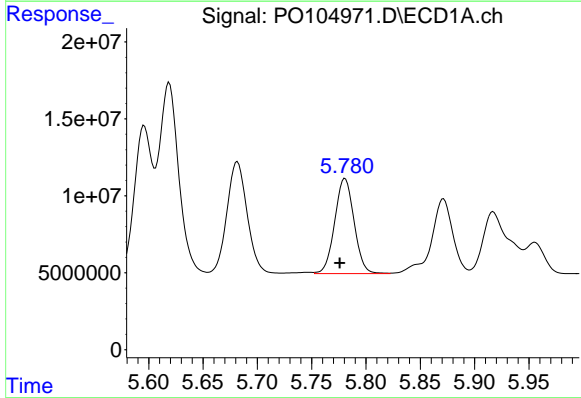
R.T.: 5.682 min
Delta R.T.: 0.004 min
Response: 94121612
Conc: 369.04 ng/ml

Instrument :
ECD_O
ClientSampleId :
AR1660CCC500



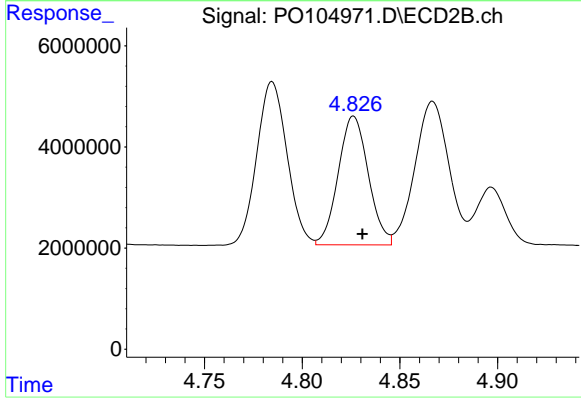
#5 AR-1016-3

R.T.: 4.785 min
Delta R.T.: -0.005 min
Response: 34599394
Conc: 419.16 ng/ml



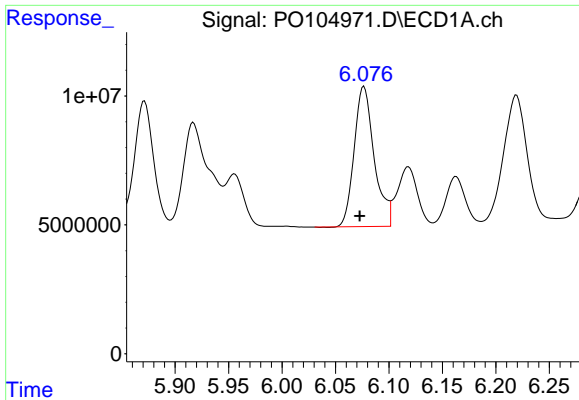
#6 AR-1016-4

R.T.: 5.781 min
Delta R.T.: 0.005 min
Response: 76656985
Conc: 357.67 ng/ml



#6 AR-1016-4

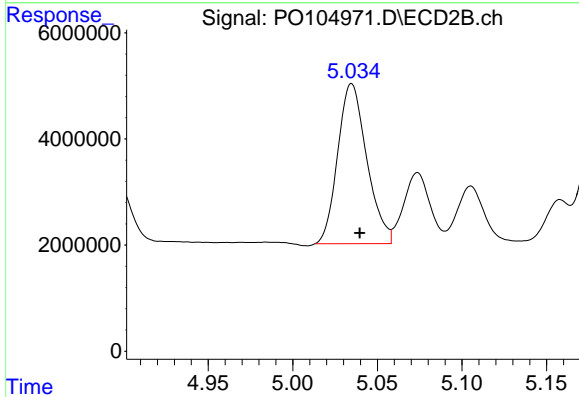
R.T.: 4.826 min
Delta R.T.: -0.005 min
Response: 27319114
Conc: 420.27 ng/ml



#7 AR-1016-5

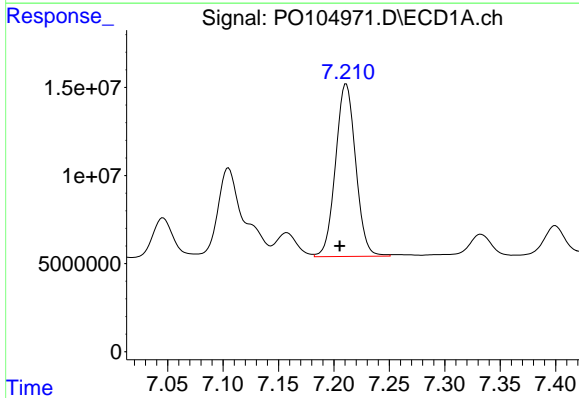
R.T.: 6.077 min
 Delta R.T.: 0.004 min
 Response: 70796918
 Conc: 338.98 ng/ml

Instrument :
 ECD_O
 ClientSampleId :
 AR1660CCC500



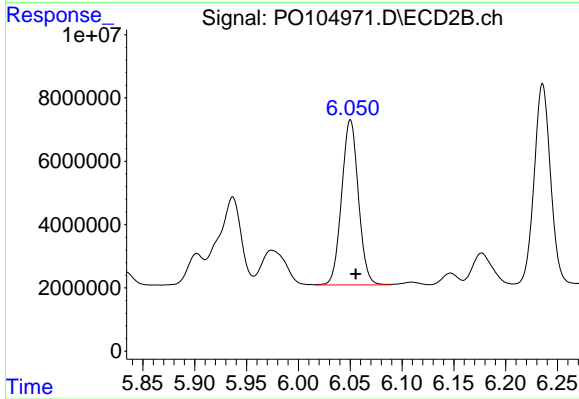
#7 AR-1016-5

R.T.: 5.035 min
 Delta R.T.: -0.005 min
 Response: 36081868
 Conc: 408.22 ng/ml



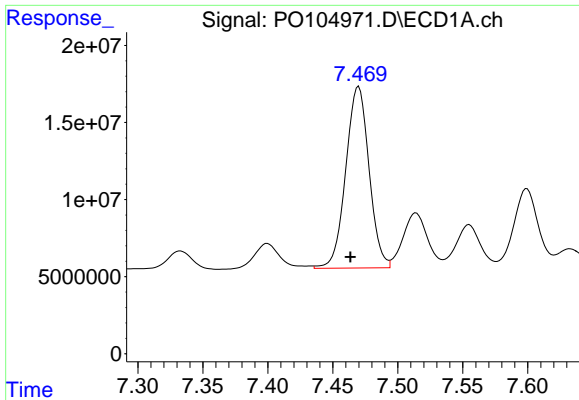
#31 AR-1260-1

R.T.: 7.211 min
 Delta R.T.: 0.006 min
 Response: 124038323
 Conc: 343.59 ng/ml



#31 AR-1260-1

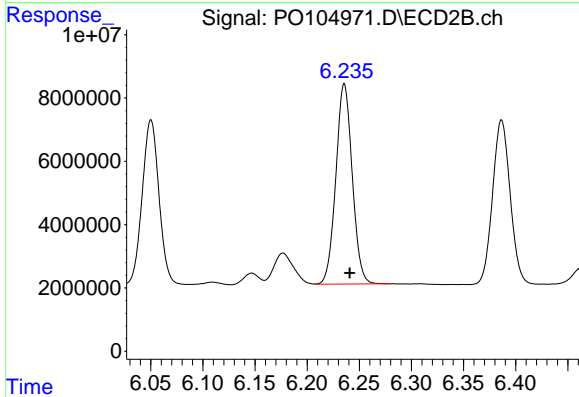
R.T.: 6.050 min
 Delta R.T.: -0.005 min
 Response: 58734209
 Conc: 366.79 ng/ml



#32 AR-1260-2

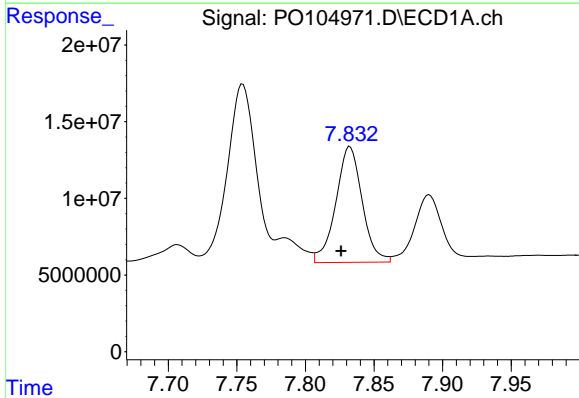
R.T.: 7.470 min
 Delta R.T.: 0.006 min
 Response: 146950597
 Conc: 348.30 ng/ml

Instrument :
 ECD_O
 ClientSampleId :
 AR1660CCC500



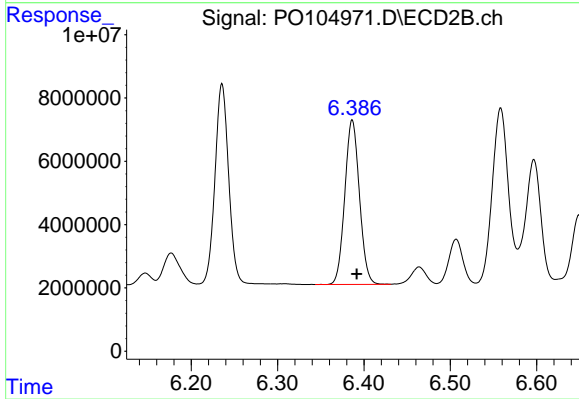
#32 AR-1260-2

R.T.: 6.236 min
 Delta R.T.: -0.005 min
 Response: 69244805
 Conc: 360.44 ng/ml



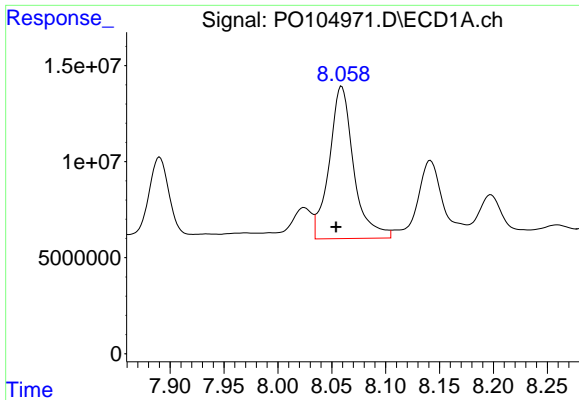
#33 AR-1260-3

R.T.: 7.832 min
 Delta R.T.: 0.007 min
 Response: 100975596
 Conc: 341.78 ng/ml



#33 AR-1260-3

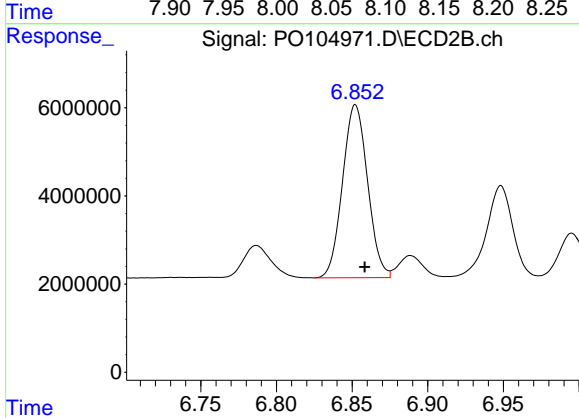
R.T.: 6.386 min
 Delta R.T.: -0.005 min
 Response: 61190589
 Conc: 344.04 ng/ml



#34 AR-1260-4

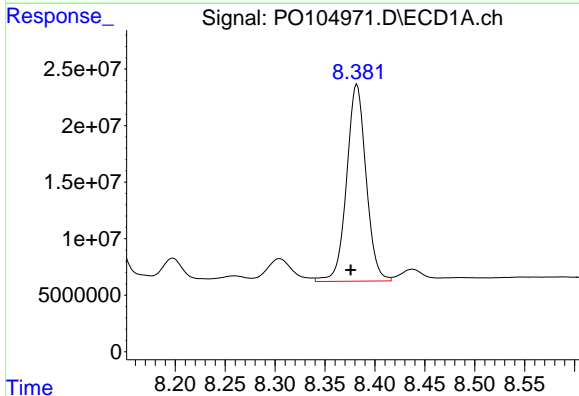
R.T.: 8.059 min
 Delta R.T.: 0.005 min
 Response: 124793480
 Conc: 352.23 ng/ml

Instrument :
 ECD_O
 ClientSampleId :
 AR1660CCC500



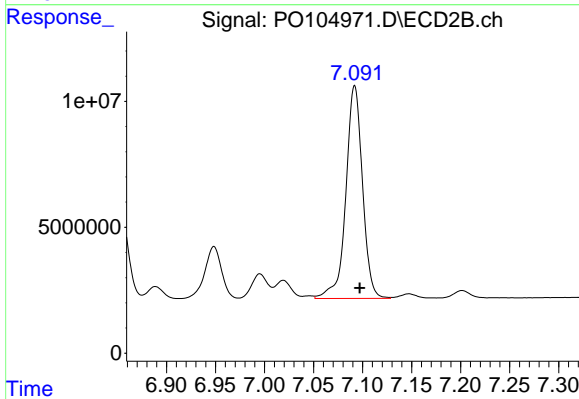
#34 AR-1260-4

R.T.: 6.852 min
 Delta R.T.: -0.006 min
 Response: 45267460
 Conc: 337.90 ng/ml



#35 AR-1260-5

R.T.: 8.382 min
 Delta R.T.: 0.006 min
 Response: 236448596
 Conc: 362.79 ng/ml



#35 AR-1260-5

R.T.: 7.092 min
 Delta R.T.: -0.005 min
 Response: 99910180
 Conc: 326.44 ng/ml