

Data Path : Z:\pestpcbsrv\HPCHEM1\ECD_0\Data\P0072720\
 Data File : P0070037.D
 Signal(s) : Signal #1: ECD1A.CH Signal #2: ECD2B.CH
 Acq On : 27 Jul 2020 13:09
 Operator : DD\AJ
 Sample : AR1254ICC500
 Misc :
 ALS Vial : 12 Sample Multiplier: 1

Instrument :
 ECD_0
 ClientSampleId :
 AR1254ICC500

Integration File signal 1: autoint1.e
 Integration File signal 2: autoint2.e
 Quant Time: Jul 27 14:16:31 2020
 Quant Method : Z:\pestpcbsrv\HPCHEM1\ECD_0\methods\P0072720.M
 Quant Title : GC EXTRACTABLES
 QLast Update : Mon Jul 27 14:16:15 2020
 Response via : Initial Calibration
 Integrator: ChemStation 6890 Scale Mode: Small noise peaks clipped

Volume Inj. : 2 µl
 Signal #1 Phase : ZB-MR1 Signal #2 Phase: ZB-MR2
 Signal #1 Info : 30Mx0.32mmx 0.50µ Signal #2 Info : 30M x 0.32mm x 0.25µm

Compound	RT#1	RT#2	Resp#1	Resp#2	ng/ml	ng/ml

System Monitoring Compounds						
1) SA Tetrachlo...	4.400	3.579	1919497	2021368	50.000	50.000
2) SA Decachlor...	10.042	8.776	3101149	2711580	50.000	50.000
Target Compounds						
26) L6 AR-1254-1	6.596	5.667	988442	1402249	500.000	500.000
27) L6 AR-1254-2	6.825	5.828	1558357	1250889	500.000	500.000
28) L6 AR-1254-3	7.201	6.238	1621729	1942547	500.000	500.000
29) L6 AR-1254-4	7.495	6.478	1501888	1364857	500.000	500.000
30) L6 AR-1254-5	7.916	6.901	1493465	1785520	500.000	500.000

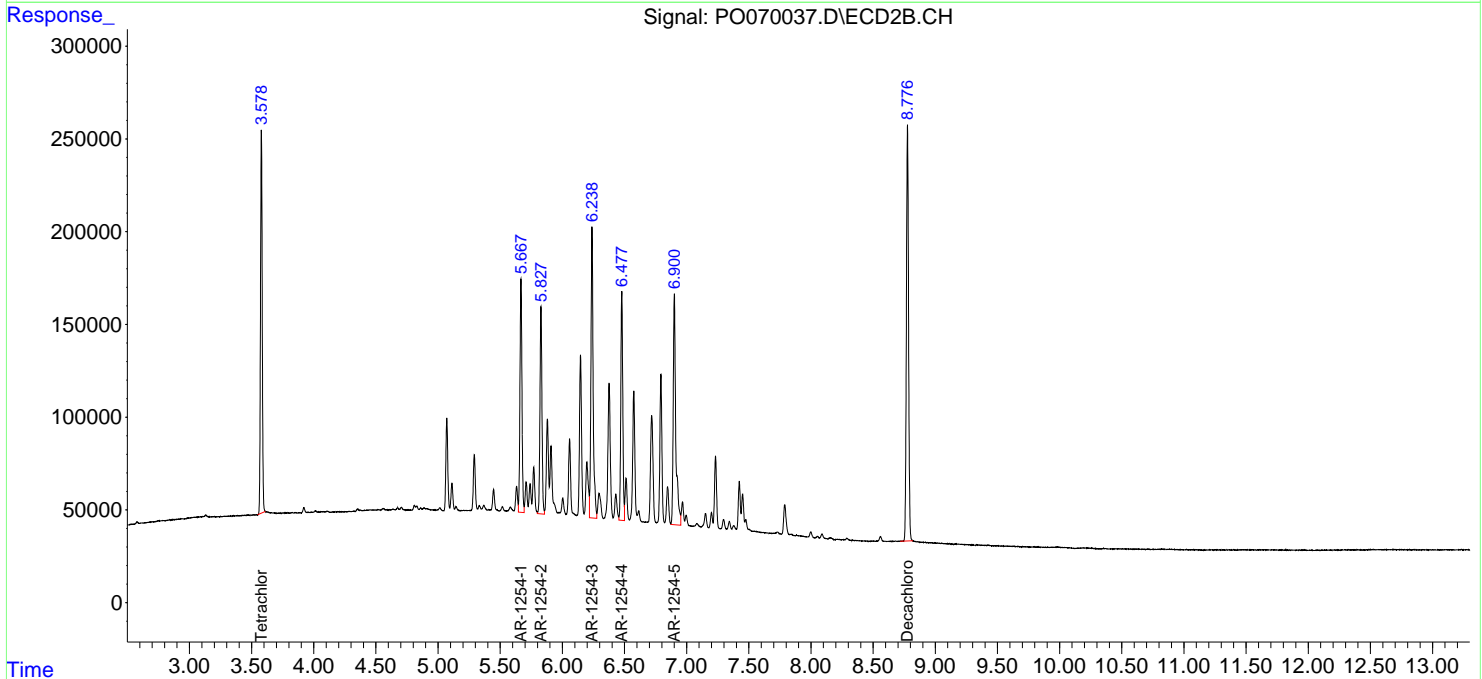
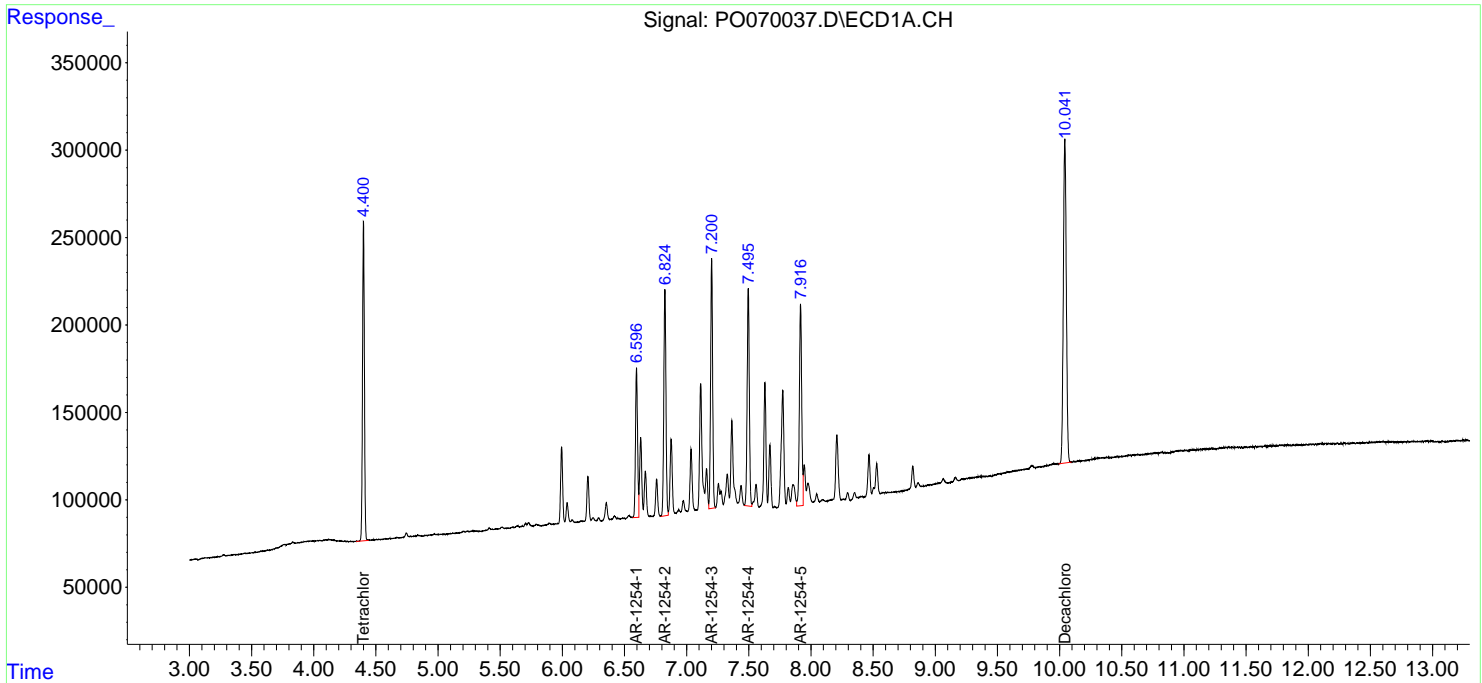
(f)=RT Delta > 1/2 Window (#)=Amounts differ by > 25% (m)=manual int.

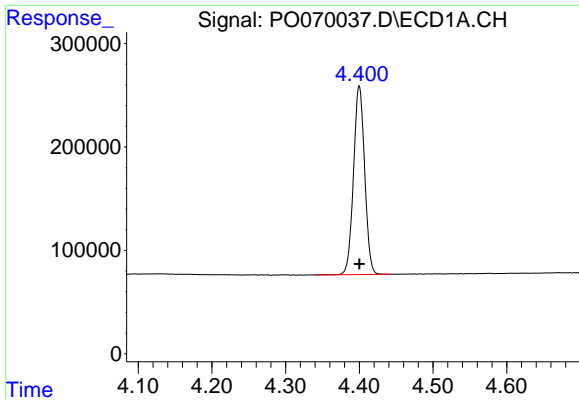
Data Path : Z:\pestpcbsrv\HPCHEM1\ECD_0\Data\P0072720\
Data File : P0070037.D
Signal(s) : Signal #1: ECD1A.CH Signal #2: ECD2B.CH
Acq On : 27 Jul 2020 13:09
Operator : DD\AJ
Sample : AR1254ICC500
Misc :
ALS Vial : 12 Sample Multiplier: 1

Instrument :
ECD_O
ClientSampleID :
AR1254ICC500

Integration File signal 1: autoint1.e
Integration File signal 2: autoint2.e
Quant Time: Jul 27 14:16:31 2020
Quant Method : Z:\pestpcbsrv\HPCHEM1\ECD_0\methods\P0072720.M
Quant Title : GC EXTRACTABLES
QLast Update : Mon Jul 27 14:16:15 2020
Response via : Initial Calibration
Integrator: ChemStation 6890 Scale Mode: Small noise peaks clipped

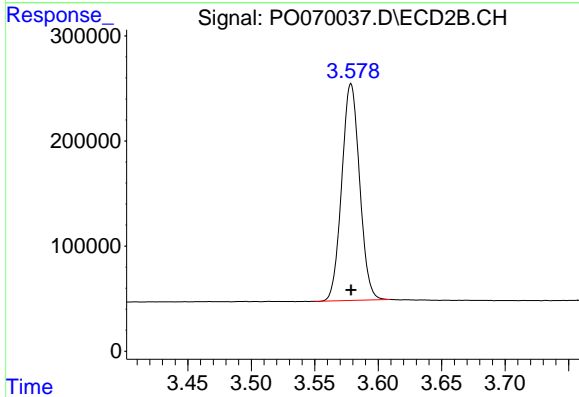
Volume Inj. : 2 µl
Signal #1 Phase : ZB-MR1 Signal #2 Phase: ZB-MR2
Signal #1 Info : 30Mx0.32mmx 0.50µ Signal #2 Info : 30M x 0.32mm x 0.25µm



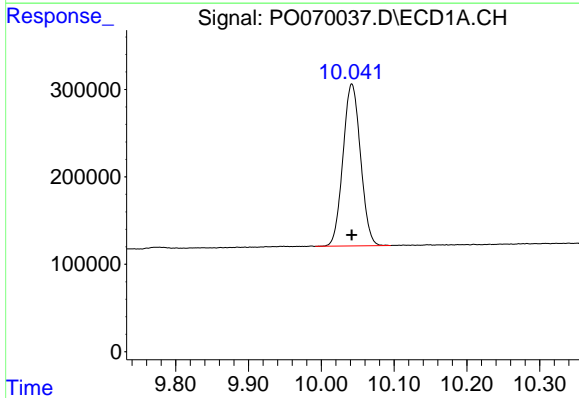


#1 Tetrachloro-m-xylene
 R.T.: 4.400 min
 Delta R.T.: 0.000 min
 Response: 1919497
 Conc: 50.00 ng/ml

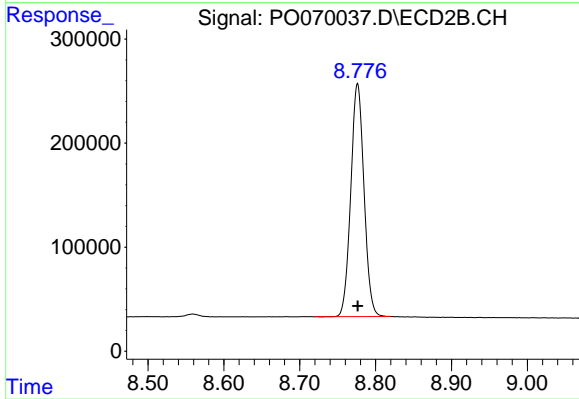
Instrument :
 ECD_O
ClientSampled :
 AR1254ICC500



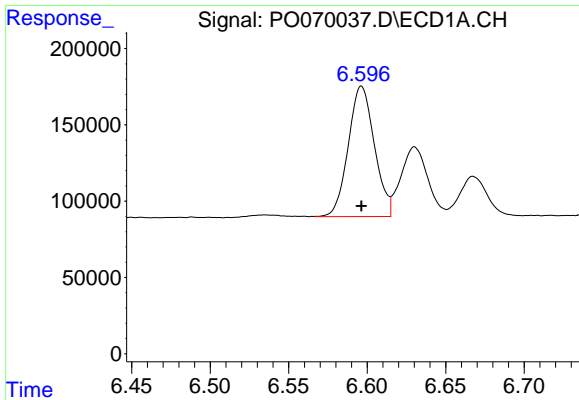
#1 Tetrachloro-m-xylene
 R.T.: 3.579 min
 Delta R.T.: 0.000 min
 Response: 2021368
 Conc: 50.00 ng/ml



#2 Decachlorobiphenyl
 R.T.: 10.042 min
 Delta R.T.: 0.000 min
 Response: 3101149
 Conc: 50.00 ng/ml



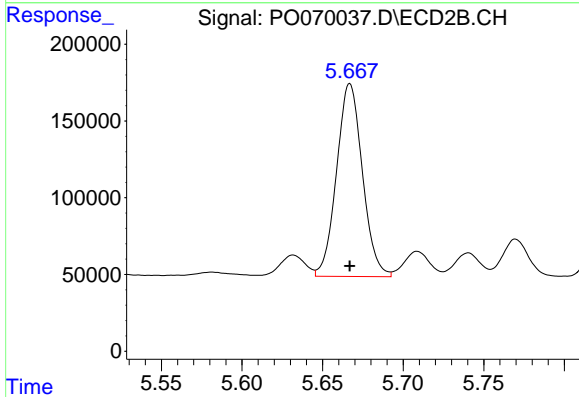
#2 Decachlorobiphenyl
 R.T.: 8.776 min
 Delta R.T.: 0.000 min
 Response: 2711580
 Conc: 50.00 ng/ml



#26 AR-1254-1

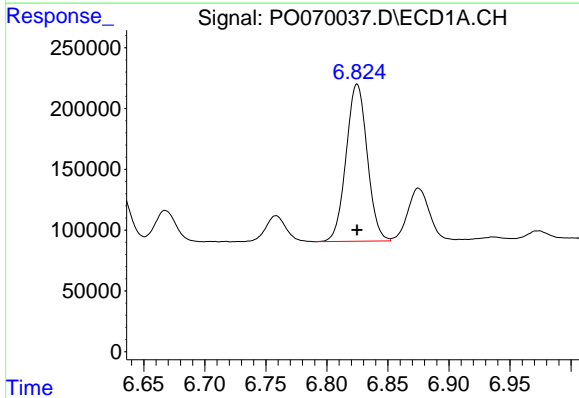
R.T.: 6.596 min
 Delta R.T.: 0.000 min
 Response: 988442
 Conc: 500.00 ng/ml

Instrument :
 ECD_O
 ClientSampleId :
 AR1254ICC500



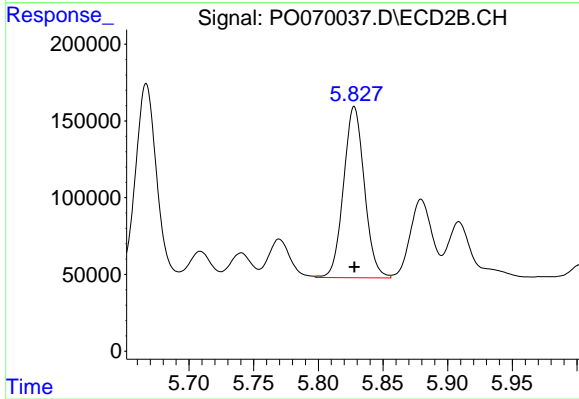
#26 AR-1254-1

R.T.: 5.667 min
 Delta R.T.: 0.000 min
 Response: 1402249
 Conc: 500.00 ng/ml



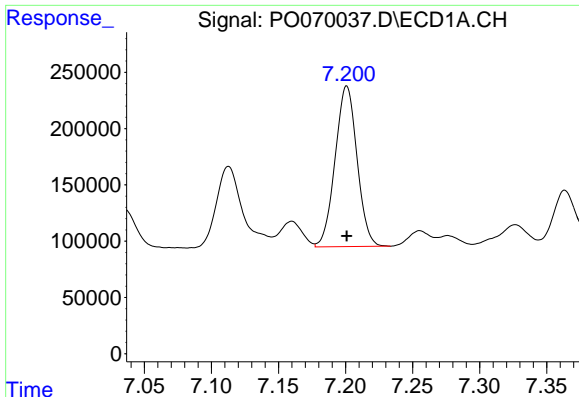
#27 AR-1254-2

R.T.: 6.825 min
 Delta R.T.: 0.000 min
 Response: 1558357
 Conc: 500.00 ng/ml



#27 AR-1254-2

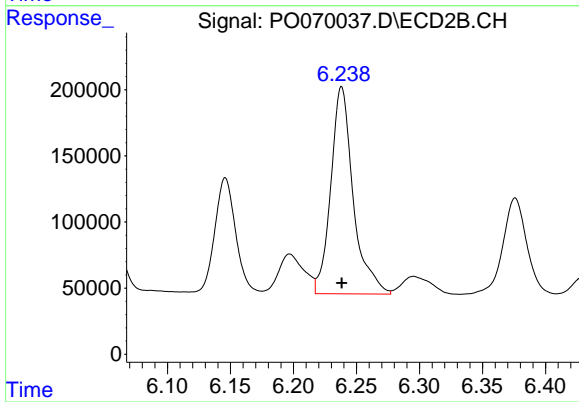
R.T.: 5.828 min
 Delta R.T.: 0.000 min
 Response: 1250889
 Conc: 500.00 ng/ml



#28 AR-1254-3

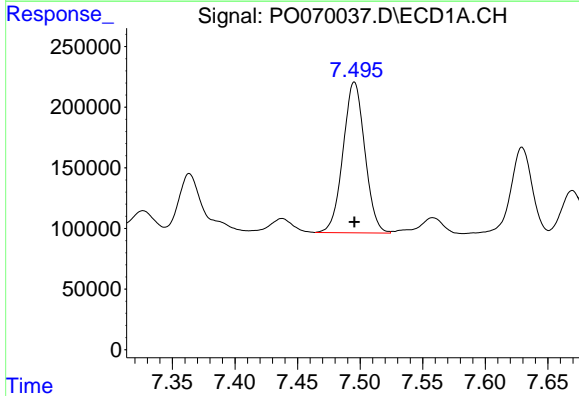
R.T.: 7.201 min
Delta R.T.: 0.000 min
Response: 1621729
Conc: 500.00 ng/ml

Instrument :
ECD_O
ClientSampleId :
AR1254ICC500



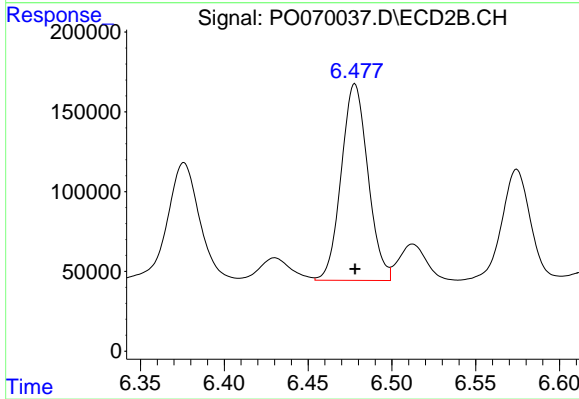
#28 AR-1254-3

R.T.: 6.238 min
Delta R.T.: 0.000 min
Response: 1942547
Conc: 500.00 ng/ml



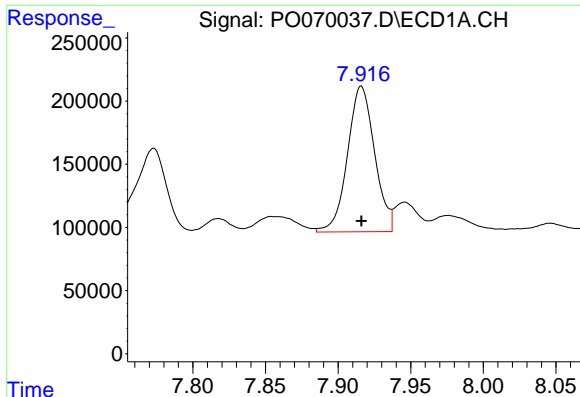
#29 AR-1254-4

R.T.: 7.495 min
Delta R.T.: 0.000 min
Response: 1501888
Conc: 500.00 ng/ml



#29 AR-1254-4

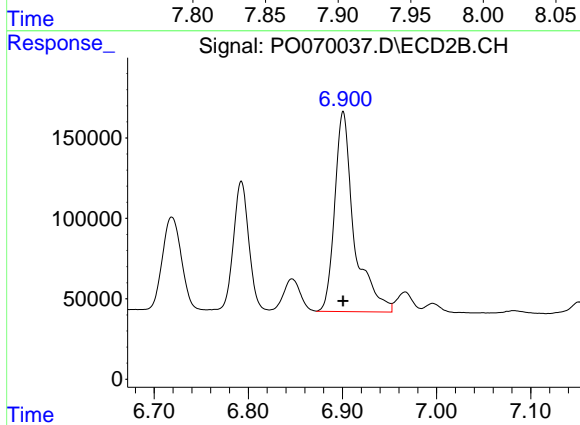
R.T.: 6.478 min
Delta R.T.: 0.000 min
Response: 1364857
Conc: 500.00 ng/ml



#30 AR-1254-5

R.T.: 7.916 min
Delta R.T.: 0.000 min
Response: 1493465
Conc: 500.00 ng/ml

Instrument :
ECD_O
ClientSampleId :
AR1254ICC500



#30 AR-1254-5

R.T.: 6.901 min
Delta R.T.: 0.000 min
Response: 1785520
Conc: 500.00 ng/ml