

Data Path : Z:\pestpcbsrv\HPCHEM1\ECD_0\Data\P0072720\
 Data File : P0070047.D
 Signal(s) : Signal #1: ECD1A.CH Signal #2: ECD2B.CH
 Acq On : 27 Jul 2020 16:02
 Operator : DD\AJ
 Sample : L3450-04RE
 Misc :
 ALS Vial : 5 Sample Multiplier: 1

Instrument :
 ECD_0
 ClientSampleId :
 TT-018-IDW/GW-20200723RE

Integration File signal 1: autoint1.e
 Integration File signal 2: autoint2.e
 Quant Time: Jul 27 17:56:20 2020
 Quant Method : Z:\pestpcbsrv\HPCHEM1\ECD_0\methods\P0072720.M
 Quant Title : GC EXTRACTABLES
 QLast Update : Mon Jul 27 17:35:07 2020
 Response via : Initial Calibration
 Integrator: ChemStation 6890 Scale Mode: Small noise peaks clipped

Volume Inj. : 2 µl
 Signal #1 Phase : ZB-MR1 Signal #2 Phase: ZB-MR2
 Signal #1 Info : 30Mx0.32mmx 0.50µ Signal #2 Info : 30M x 0.32mm x 0.25µm

Compound	RT#1	RT#2	Resp#1	Resp#2	ng/ml	ng/ml

System Monitoring Compounds						
1) SA Tetrachlo...	4.402	3.580	886141	1012311	24.202	26.694
2) SA Decachlor...	10.047	8.777	402407	393781	6.724	7.534

Target Compounds

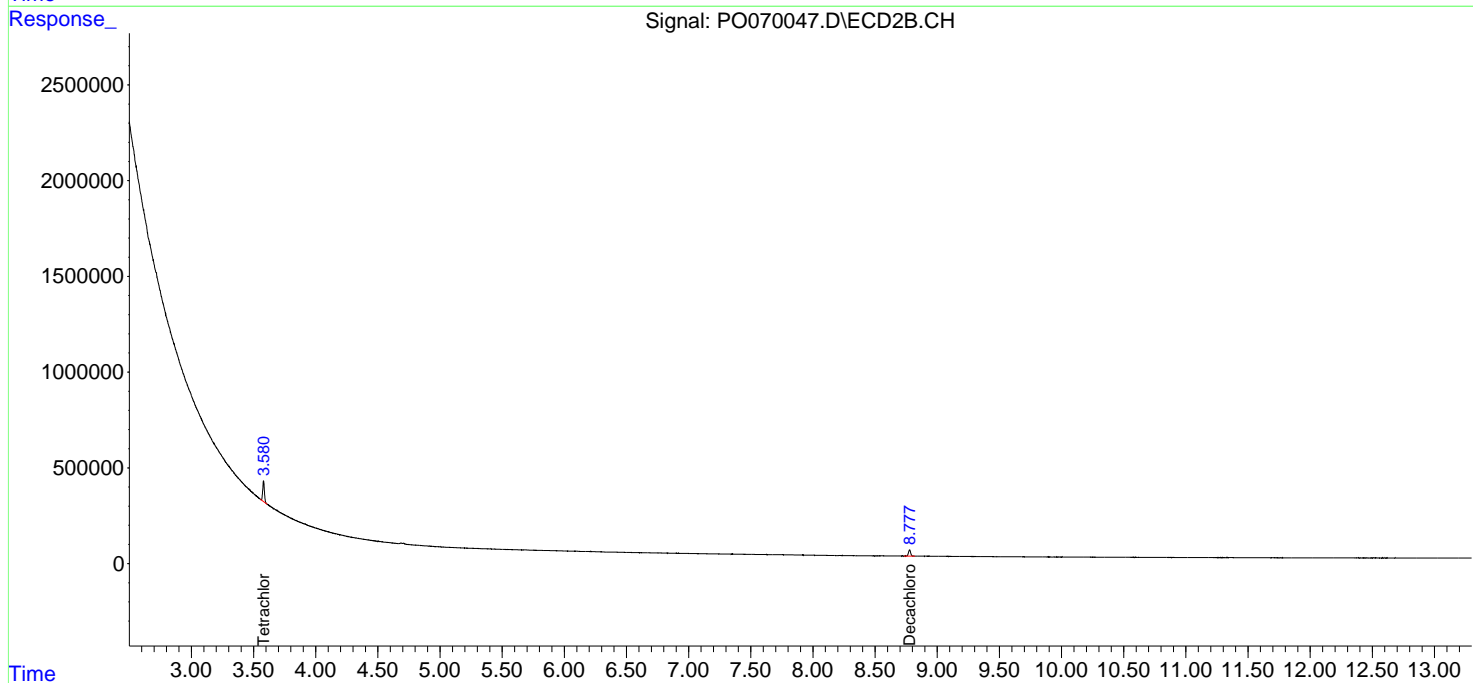
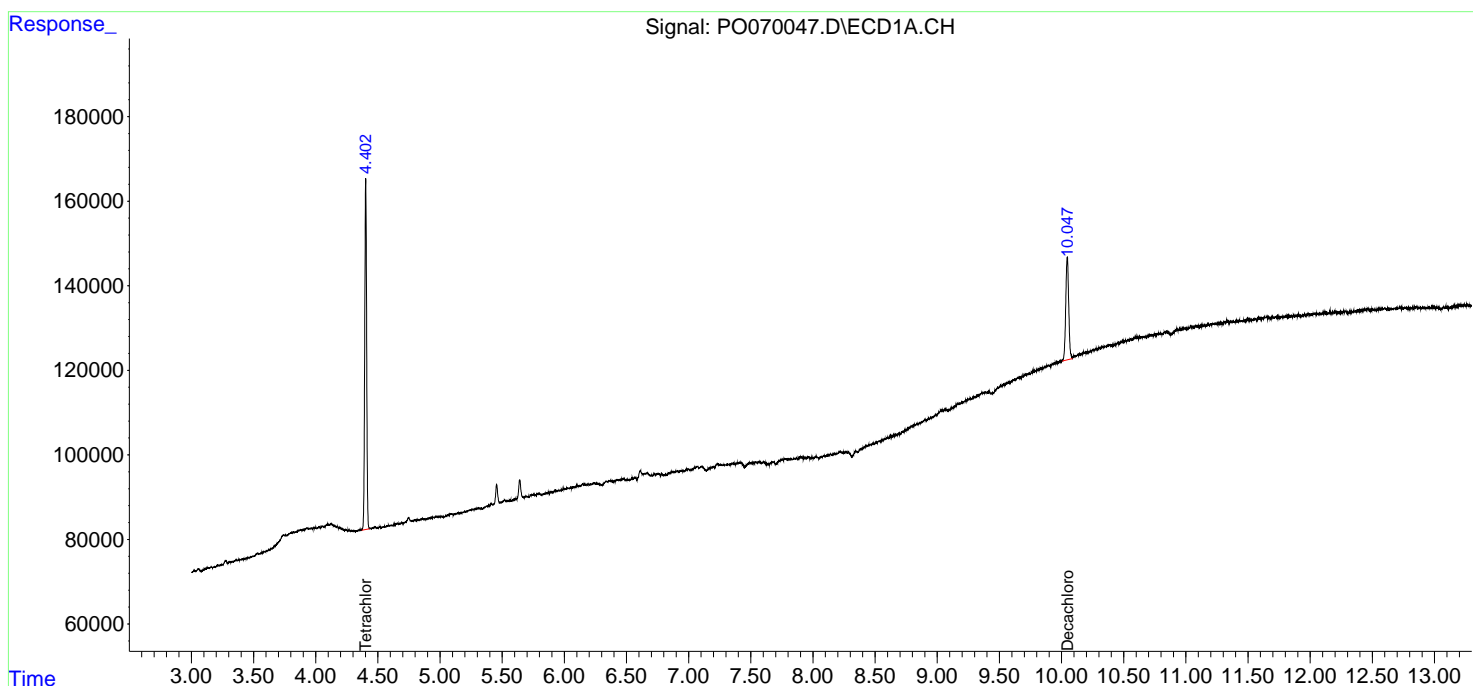
(f)=RT Delta > 1/2 Window (#)=Amounts differ by > 25% (m)=manual int.

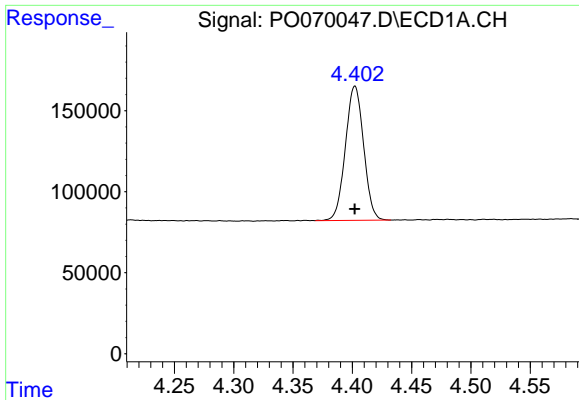
Data Path : Z:\pestpcbsrv\HPCHEM1\ECD_0\Data\P0072720\
 Data File : P0070047.D
 Signal(s) : Signal #1: ECD1A.CH Signal #2: ECD2B.CH
 Acq On : 27 Jul 2020 16:02
 Operator : DD\AJ
 Sample : L3450-04RE
 Misc :
 ALS Vial : 5 Sample Multiplier: 1

Instrument :
 ECD_O
 ClientSampleId :
 TT-018-IDW/GW-20200723RE

Integration File signal 1: autoint1.e
 Integration File signal 2: autoint2.e
 Quant Time: Jul 27 17:56:20 2020
 Quant Method : Z:\pestpcbsrv\HPCHEM1\ECD_0\methods\P0072720.M
 Quant Title : GC EXTRACTABLES
 QLast Update : Mon Jul 27 17:35:07 2020
 Response via : Initial Calibration
 Integrator: ChemStation 6890 Scale Mode: Small noise peaks clipped

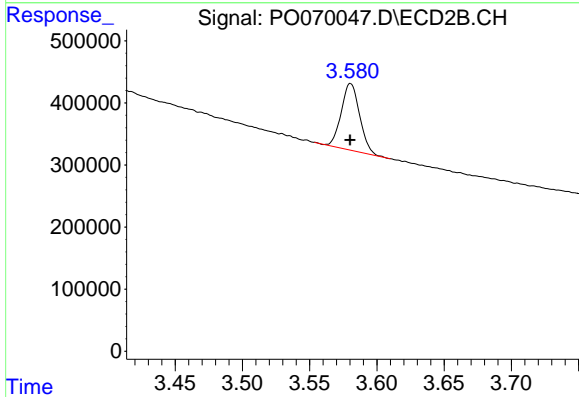
Volume Inj. : 2 µl
 Signal #1 Phase : ZB-MR1 Signal #2 Phase: ZB-MR2
 Signal #1 Info : 30Mx0.32mmx 0.50µ Signal #2 Info : 30M x 0.32mm x 0.25µm



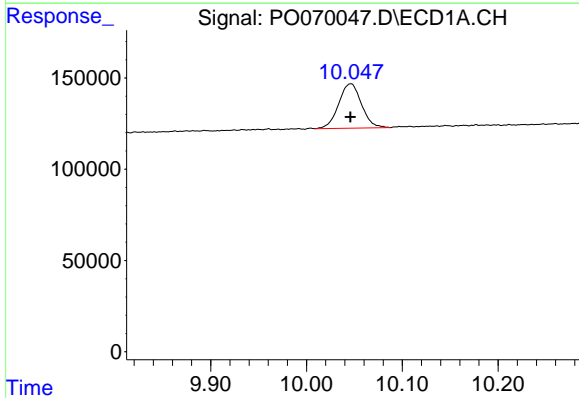


#1 Tetrachloro-m-xylene
 R.T.: 4.402 min
 Delta R.T.: 0.000 min
 Response: 886141
 Conc: 24.20 ng/ml

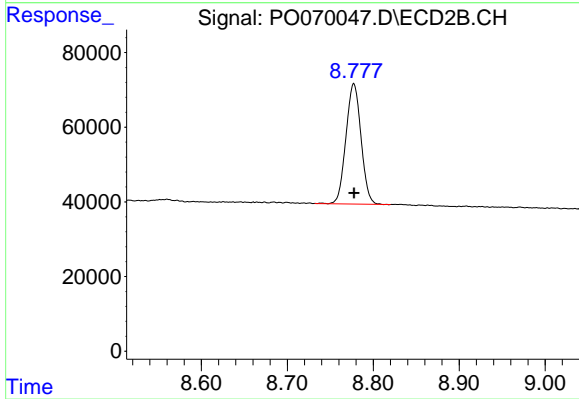
Instrument :
 ECD_O
 ClientSampleId :
 TT-018-IDW/GW-20200723RE



#1 Tetrachloro-m-xylene
 R.T.: 3.580 min
 Delta R.T.: 0.000 min
 Response: 1012311
 Conc: 26.69 ng/ml



#2 Decachlorobiphenyl
 R.T.: 10.047 min
 Delta R.T.: 0.000 min
 Response: 402407
 Conc: 6.72 ng/ml



#2 Decachlorobiphenyl
 R.T.: 8.777 min
 Delta R.T.: 0.000 min
 Response: 393781
 Conc: 7.53 ng/ml