

Data Path : Z:\pestpcbsrv\HPCHEM1\ECD_0\Data\P0072720\
 Data File : P0070072.D
 Signal(s) : Signal #1: ECD1A.CH Signal #2: ECD2B.CH
 Acq On : 27 Jul 2020 23:10
 Operator : DD\AJ
 Sample : L3435-05
 Misc :
 ALS Vial : 28 Sample Multiplier: 1

Instrument :
 ECD_0
 ClientSampleId :
 SP-3

Integration File signal 1: autoint1.e
 Integration File signal 2: autoint2.e
 Quant Time: Jul 28 01:57:28 2020
 Quant Method : Z:\pestpcbsrv\HPCHEM1\ECD_0\methods\P0072720.M
 Quant Title : GC EXTRACTABLES
 QLast Update : Mon Jul 27 17:35:07 2020
 Response via : Initial Calibration
 Integrator: ChemStation 6890 Scale Mode: Small noise peaks clipped

Volume Inj. : 2 µl
 Signal #1 Phase : ZB-MR1 Signal #2 Phase: ZB-MR2
 Signal #1 Info : 30Mx0.32mmx 0.50µ Signal #2 Info : 30M x 0.32mm x 0.25µm

Compound	RT#1	RT#2	Resp#1	Resp#2	ng/ml	ng/ml

System Monitoring Compounds						
1) SA Tetrachlo...	4.401	3.579	474732	484783	12.966	12.784
2) SA Decachlor...	10.042	8.777	891485	836114	14.896	15.996

Target Compounds

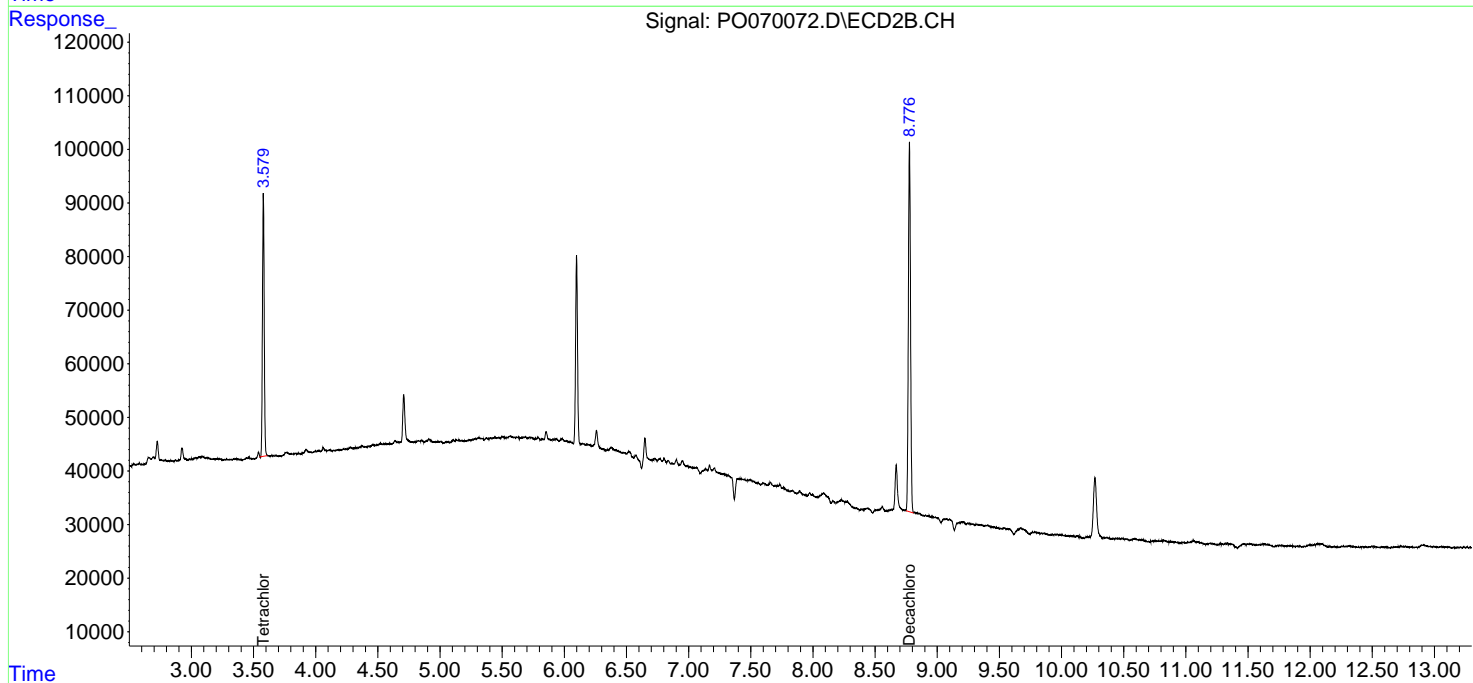
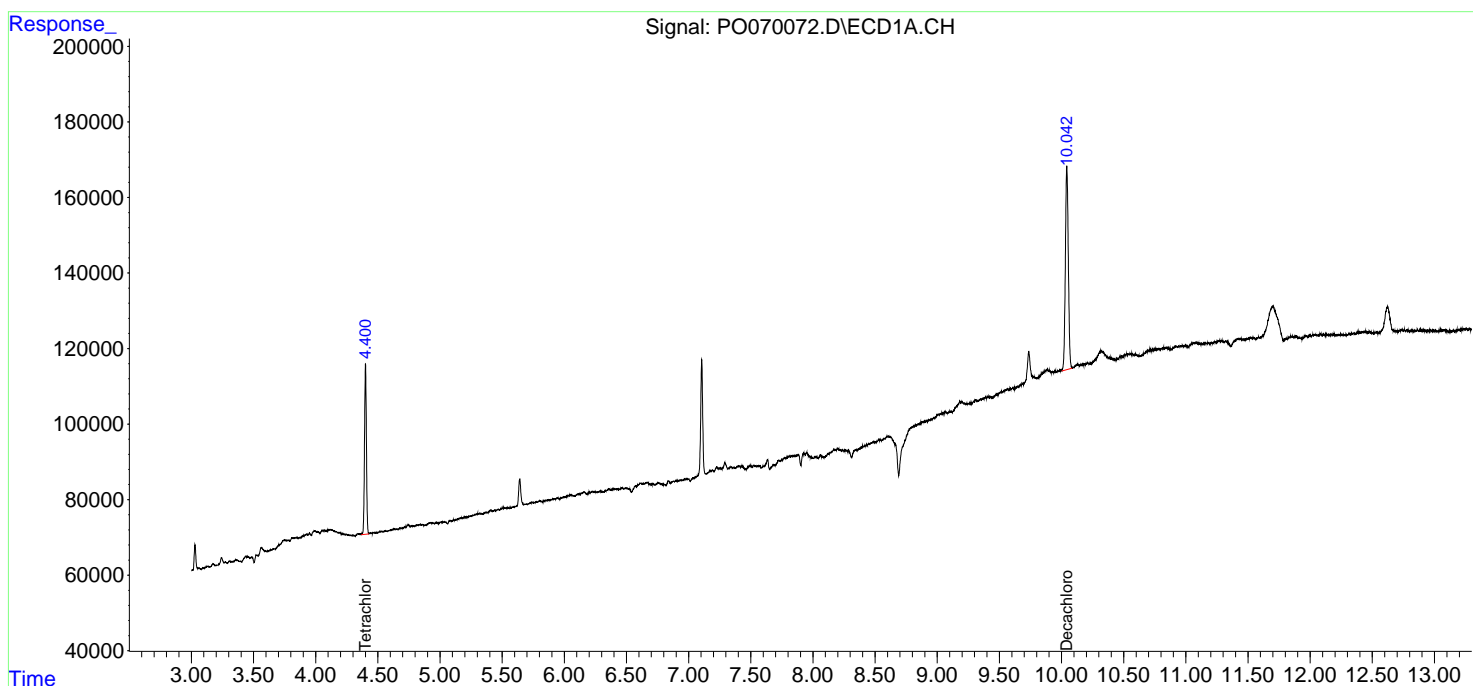
(f)=RT Delta > 1/2 Window (#)=Amounts differ by > 25% (m)=manual int.

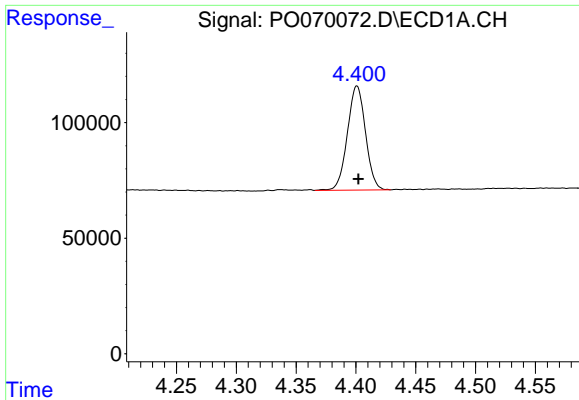
Data Path : Z:\pestpcbsrv\HPCHEM1\ECD_0\Data\P0072720\
 Data File : P0070072.D
 Signal(s) : Signal #1: ECD1A.CH Signal #2: ECD2B.CH
 Acq On : 27 Jul 2020 23:10
 Operator : DD\AJ
 Sample : L3435-05
 Misc :
 ALS Vial : 28 Sample Multiplier: 1

Instrument :
 ECD_O
 ClientSampled :
 SP-3

Integration File signal 1: autoint1.e
 Integration File signal 2: autoint2.e
 Quant Time: Jul 28 01:57:28 2020
 Quant Method : Z:\pestpcbsrv\HPCHEM1\ECD_0\methods\P0072720.M
 Quant Title : GC EXTRACTABLES
 QLast Update : Mon Jul 27 17:35:07 2020
 Response via : Initial Calibration
 Integrator: ChemStation 6890 Scale Mode: Small noise peaks clipped

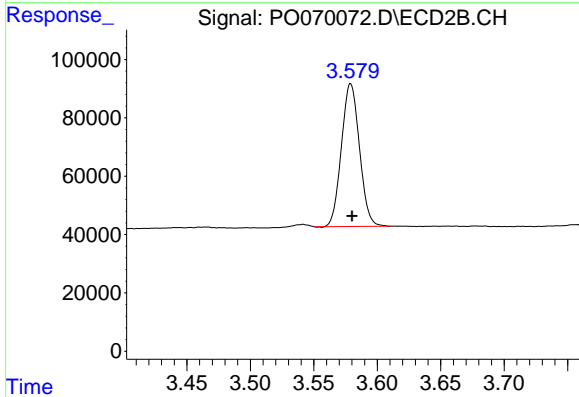
Volume Inj. : 2 µl
 Signal #1 Phase : ZB-MR1 Signal #2 Phase: ZB-MR2
 Signal #1 Info : 30Mx0.32mmx 0.50µ Signal #2 Info : 30M x 0.32mm x 0.25µm



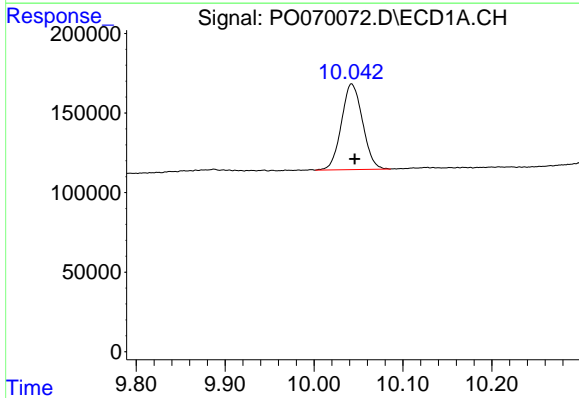


#1 Tetrachloro-m-xylene
 R.T.: 4.401 min
 Delta R.T.: -0.001 min
 Response: 474732
 Conc: 12.97 ng/ml

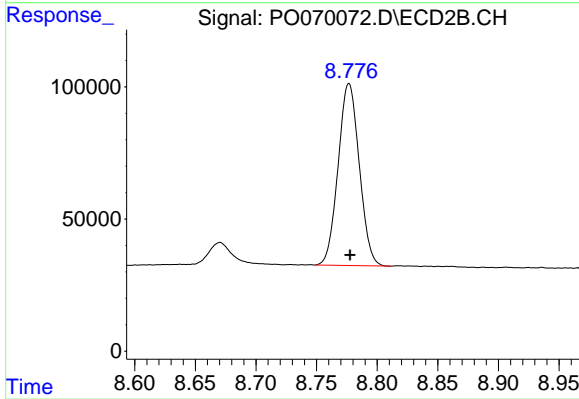
Instrument :
 ECD_O
 ClientSampleId :
 SP-3



#1 Tetrachloro-m-xylene
 R.T.: 3.579 min
 Delta R.T.: -0.001 min
 Response: 484783
 Conc: 12.78 ng/ml



#2 Decachlorobiphenyl
 R.T.: 10.042 min
 Delta R.T.: -0.003 min
 Response: 891485
 Conc: 14.90 ng/ml



#2 Decachlorobiphenyl
 R.T.: 8.777 min
 Delta R.T.: -0.001 min
 Response: 836114
 Conc: 16.00 ng/ml