

Data Path : Z:\pestpcbsrv\HPCHEM1\ECD_0\Data\P0072722\
 Data File : P0088370.D
 Signal(s) : Signal #1: ECD1A.ch Signal #2: ECD2B.ch
 Acq On : 27 Jul 2022 14:07
 Operator : YP/AJ
 Sample : N3916-02
 Misc :
 ALS Vial : 10 Sample Multiplier: 1

Instrument :
 ECD_0
 ClientSampleId :
 71323

Integration File signal 1: autoint1.e
 Integration File signal 2: autoint2.e
 Quant Time: Jul 27 16:21:54 2022
 Quant Method : Z:\pestpcbsrv\HPCHEM1\ECD_0\methods\P0071422.M
 Quant Title : GC EXTRACTABLES
 QLast Update : Tue Jul 26 11:20:17 2022
 Response via : Initial Calibration
 Integrator: ChemStation

Volume Inj. : 2 µl
 Signal #1 Phase : ZB-MR1 Signal #2 Phase: ZB-MR2
 Signal #1 Info : 30Mx0.32mmx 0.50µ Signal #2 Info : 30M x 0.32mm x 0.25µm

Compound	RT#1	RT#2	Resp#1	Resp#2	ng/ml	ng/ml

System Monitoring Compounds						
1) SA Tetrachlo...	4.446	3.605	58849544	21705992	23.068	23.006
2) SA Decachlor...	10.286	8.598	33701102	19095493	15.869	18.273

Target Compounds

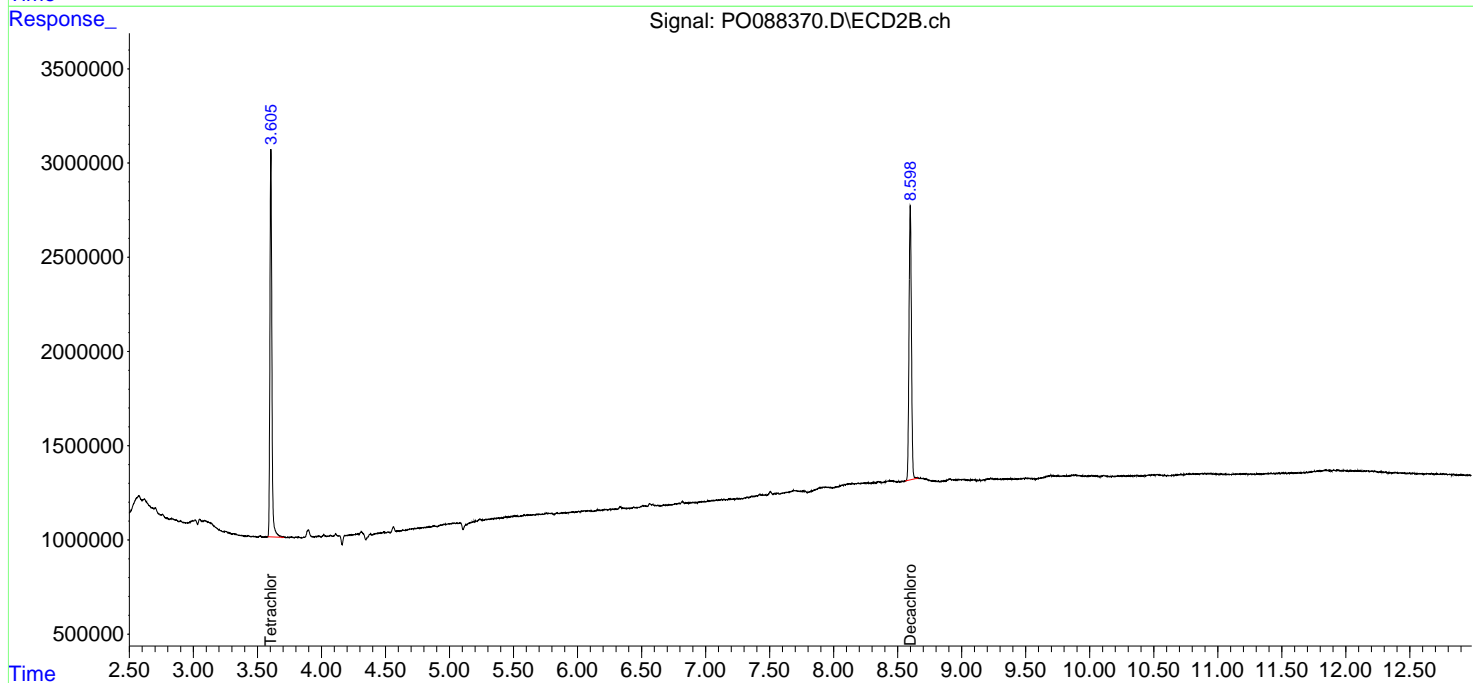
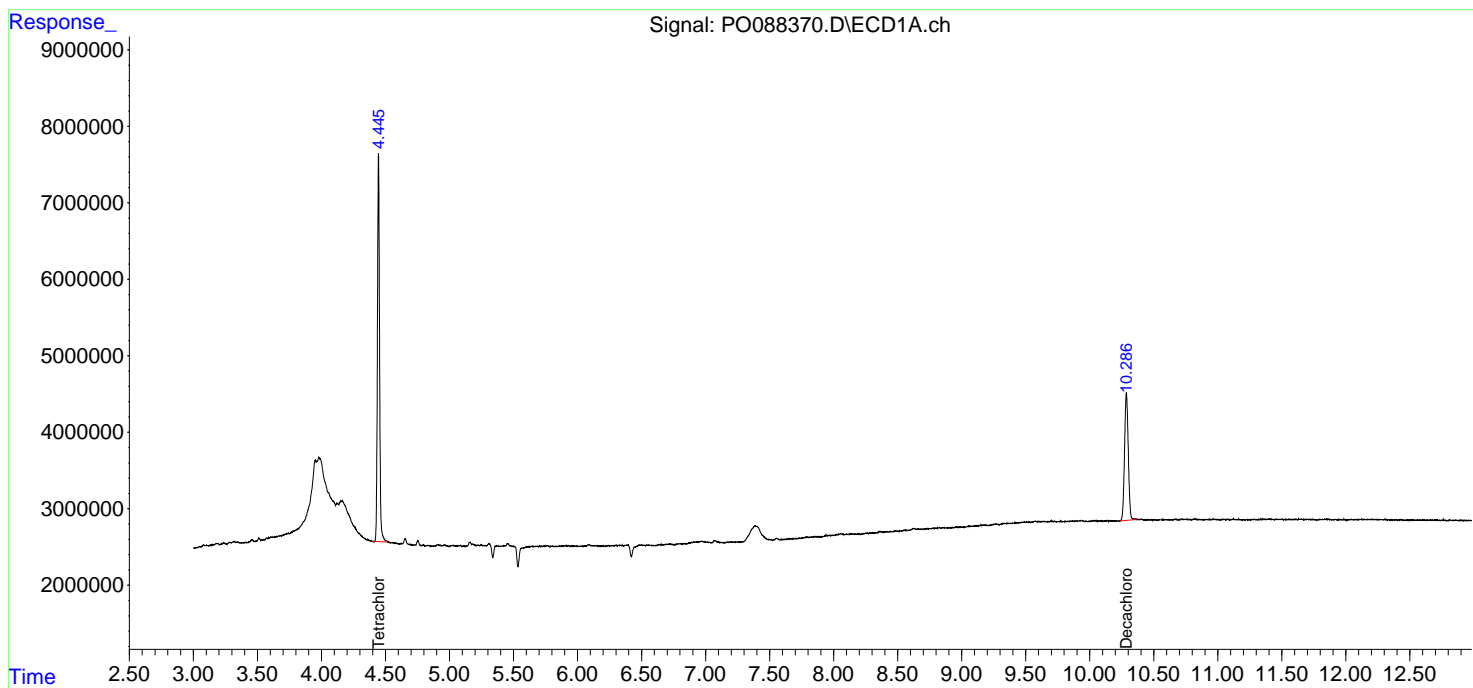
(f)=RT Delta > 1/2 Window (#)=Amounts differ by > 25% (m)=manual int.

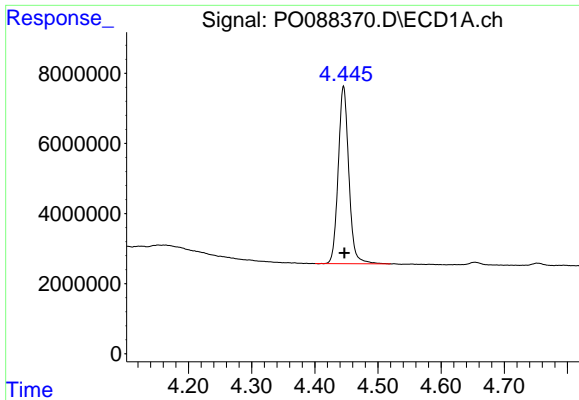
Data Path : Z:\pestpcbsrv\HPCHEM1\ECD_O\Data\P0072722\
 Data File : P0088370.D
 Signal(s) : Signal #1: ECD1A.ch Signal #2: ECD2B.ch
 Acq On : 27 Jul 2022 14:07
 Operator : YP/AJ
 Sample : N3916-02
 Misc :
 ALS Vial : 10 Sample Multiplier: 1

Instrument :
 ECD_O
 ClientSampleId :
 71323

Integration File signal 1: autoint1.e
 Integration File signal 2: autoint2.e
 Quant Time: Jul 27 16:21:54 2022
 Quant Method : Z:\pestpcbsrv\HPCHEM1\ECD_O\methods\P0071422.M
 Quant Title : GC EXTRACTABLES
 QLast Update : Tue Jul 26 11:20:17 2022
 Response via : Initial Calibration
 Integrator: ChemStation

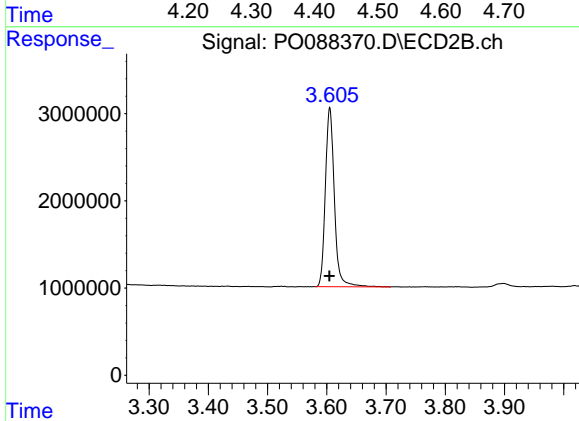
Volume Inj. : 2 µl
 Signal #1 Phase : ZB-MR1 Signal #2 Phase: ZB-MR2
 Signal #1 Info : 30Mx0.32mmx 0.50µ Signal #2 Info : 30M x 0.32mm x 0.25µm



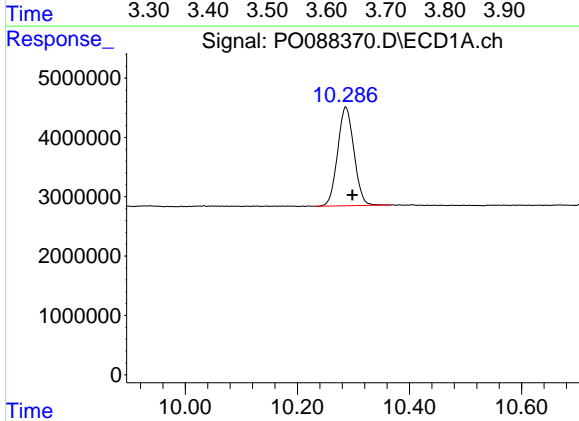


#1 Tetrachloro-m-xylene
 R.T.: 4.446 min
 Delta R.T.: -0.001 min
 Response: 58849544
 Conc: 23.07 ng/ml

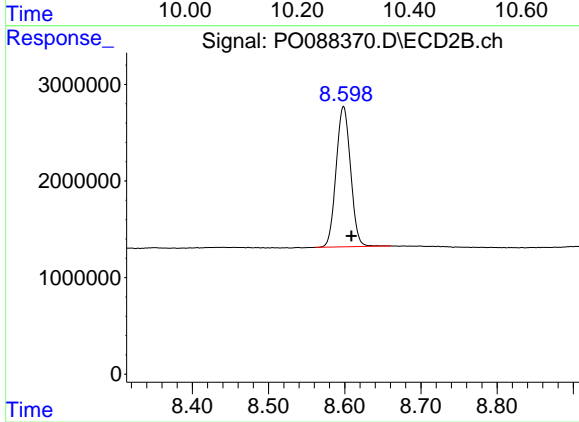
Instrument :
 ECD_O
 ClientSampleId :
 71323



#1 Tetrachloro-m-xylene
 R.T.: 3.605 min
 Delta R.T.: 0.000 min
 Response: 21705992
 Conc: 23.01 ng/ml



#2 Decachlorobiphenyl
 R.T.: 10.286 min
 Delta R.T.: -0.012 min
 Response: 33701102
 Conc: 15.87 ng/ml



#2 Decachlorobiphenyl
 R.T.: 8.598 min
 Delta R.T.: -0.010 min
 Response: 19095493
 Conc: 18.27 ng/ml