

Data Path : Z:\pestpcbsrv\HPCHEM1\ECD_0\Data\P0072820\
 Data File : P0070112.D
 Signal(s) : Signal #1: ECD1A.CH Signal #2: ECD2B.CH
 Acq On : 28 Jul 2020 13:50
 Operator : DD\AJ
 Sample : L3436-06
 Misc :
 ALS Vial : 20 Sample Multiplier: 1

Instrument :
 ECD_0
ClientSampled :
 6

Manual Integrations
APPROVED
 Ankita
 7/29/2020 4:41:36 PM

Integration File signal 1: autoint1.e
 Integration File signal 2: autoint2.e
 Quant Time: Jul 29 02:12:57 2020
 Quant Method : Z:\pestpcbsrv\HPCHEM1\ECD_0\methods\P0072720.M
 Quant Title : GC EXTRACTABLES
 QLast Update : Mon Jul 27 17:35:07 2020
 Response via : Initial Calibration
 Integrator: ChemStation 6890 Scale Mode: Small noise peaks clipped

Volume Inj. : 2 µl
 Signal #1 Phase : ZB-MR1 Signal #2 Phase: ZB-MR2
 Signal #1 Info : 30Mx0.32mmx 0.50µ Signal #2 Info : 30M x 0.32mm x 0.25µm

| Compound | RT#1 | RT#2 | Resp#1 | Resp#2 | ng/ml | ng/ml |
|-----------------------------|--------|-------|--------|--------|---------|---------|
| ----- | | | | | | |
| System Monitoring Compounds | | | | | | |
| 1) SA Tetrachlo... | 4.399 | 3.579 | 744353 | 954465 | 20.329 | 25.169m |
| 2) SA Decachlor... | 10.039 | 8.775 | 966035 | 794394 | 16.142m | 15.198m |

Target Compounds

(f)=RT Delta > 1/2 Window (#)=Amounts differ by > 25% (m)=manual int.

Data Path : Z:\pestpcbsrv\HPCHEM1\ECD_O\Data\P0072820\
 Data File : P0070112.D
 Signal(s) : Signal #1: ECD1A.CH Signal #2: ECD2B.CH
 Acq On : 28 Jul 2020 13:50
 Operator : DD\AJ
 Sample : L3436-06
 Misc :
 ALS Vial : 20 Sample Multiplier: 1

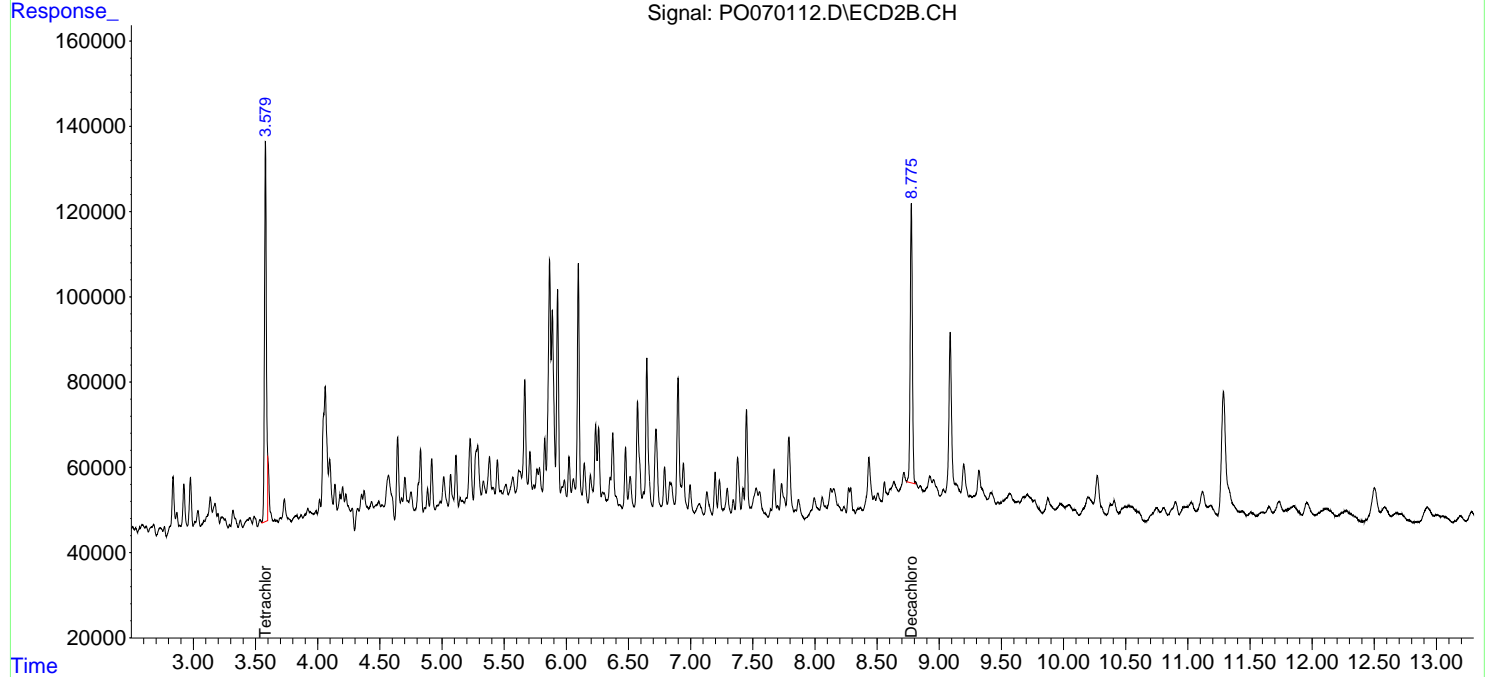
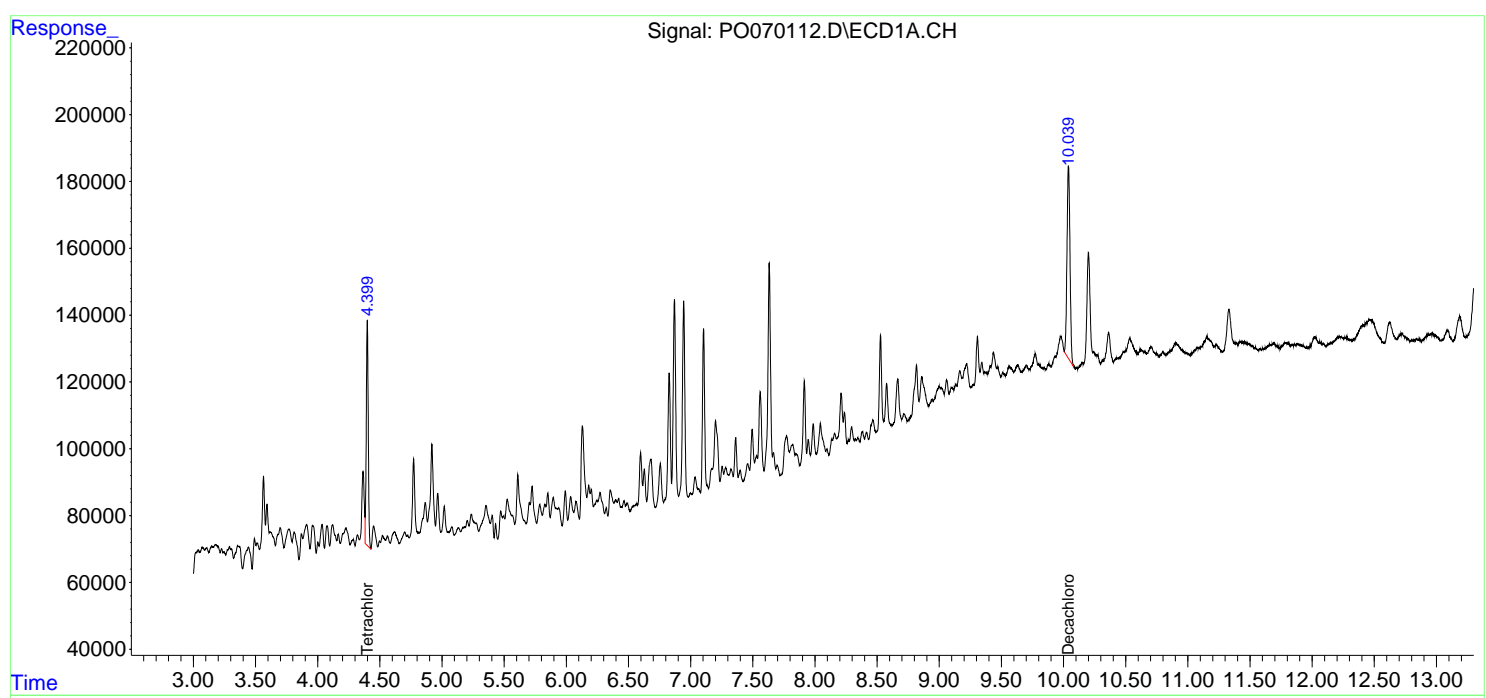
Instrument :
 ECD_O
 ClientSampled :
 6

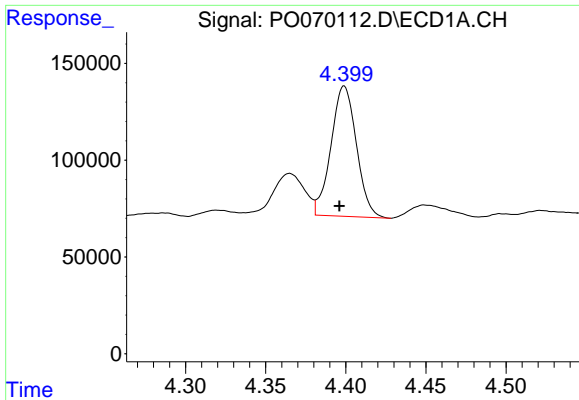
Manual Integrations
 APPROVED

Ankita
 7/29/2020 4:41:36 PM

Integration File signal 1: autoint1.e
 Integration File signal 2: autoint2.e
 Quant Time: Jul 29 02:12:57 2020
 Quant Method : Z:\pestpcbsrv\HPCHEM1\ECD_O\methods\P0072720.M
 Quant Title : GC EXTRACTABLES
 QLast Update : Mon Jul 27 17:35:07 2020
 Response via : Initial Calibration
 Integrator: ChemStation 6890 Scale Mode: Small noise peaks clipped

Volume Inj. : 2 µl
 Signal #1 Phase : ZB-MR1 Signal #2 Phase: ZB-MR2
 Signal #1 Info : 30Mx0.32mmx 0.50µ Signal #2 Info : 30M x 0.32mm x 0.25µm

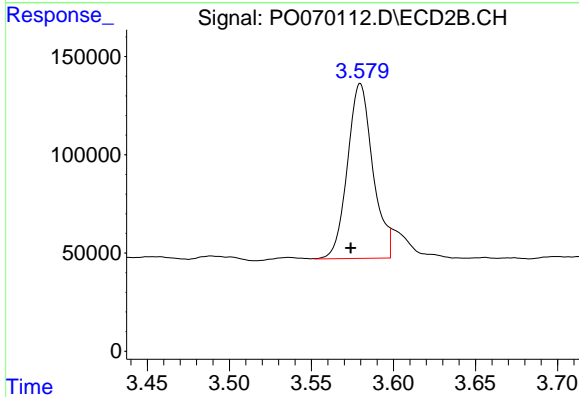




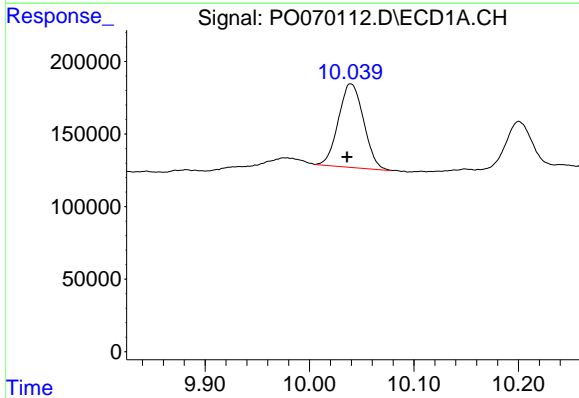
#1 Tetrachloro-m-xylene
 R.T.: 4.399 min
 Delta R.T.: 0.003 min
 Response: 744353
 Conc: 20.33 ng/ml

Instrument :
 ECD_O
 ClientSampled :
 6

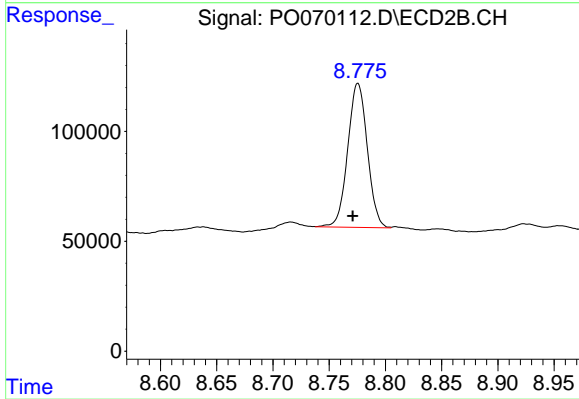
Manual Integrations
 APPROVED
 Ankita
 7/29/2020 4:41:36 PM



#1 Tetrachloro-m-xylene
 R.T.: 3.579 min
 Delta R.T.: 0.005 min
 Response: 954465
 Conc: 25.17 ng/ml m



#2 Decachlorobiphenyl
 R.T.: 10.039 min
 Delta R.T.: 0.003 min
 Response: 966035
 Conc: 16.14 ng/ml m



#2 Decachlorobiphenyl
 R.T.: 8.775 min
 Delta R.T.: 0.004 min
 Response: 794394
 Conc: 15.20 ng/ml m