

Data Path : Z:\pestpcbsrv\HPCHEM1\ECD_0\Data\P0072821\
 Data File : P0079867.D
 Signal(s) : Signal #1: ECD1A.CH Signal #2: ECD2B.CH
 Acq On : 28 Jul 2021 15:26
 Operator : DD\AJ
 Sample : AR1248ICC250
 Misc :
 ALS Vial : 18 Sample Multiplier: 1

Instrument :
 ECD_0
 ClientSampleId :
 AR1248ICC250

Integration File signal 1: autoint1.e
 Integration File signal 2: autoint2.e
 Quant Time: Jul 28 16:05:38 2021
 Quant Method : Z:\pestpcbsrv\HPCHEM1\ECD_0\methods\P0072821.M
 Quant Title : GC EXTRACTABLES
 QLast Update : Wed Jul 28 16:04:36 2021
 Response via : Initial Calibration
 Integrator: ChemStation 6890 Scale Mode: Small noise peaks clipped

Volume Inj. : 2 µl
 Signal #1 Phase : ZB-MR1 Signal #2 Phase: ZB-MR2
 Signal #1 Info : 30Mx0.32mmx 0.50µ Signal #2 Info : 30M x 0.32mm x 0.25µm

Compound	RT#1	RT#2	Resp#1	Resp#2	ng/ml	ng/ml

System Monitoring Compounds						
1) SA Tetrachlo...	5.000	4.119	1559493	616289	24.770	25.609
2) SA Decachlor...	11.111	9.530	1277126	572656	25.574	26.896
Target Compounds						
21) L5 AR-1248-1	6.331	5.397	325594	142985	253.498	264.018
22) L5 AR-1248-2	6.627	5.665	467474	209800	274.786	268.531
23) L5 AR-1248-3	6.845	5.710	522824	216662	258.376	266.624
24) L5 AR-1248-4	7.276	5.898	583354	248699	254.865	265.243
25) L5 AR-1248-5	7.316	6.327	564399	242146	253.368	260.755

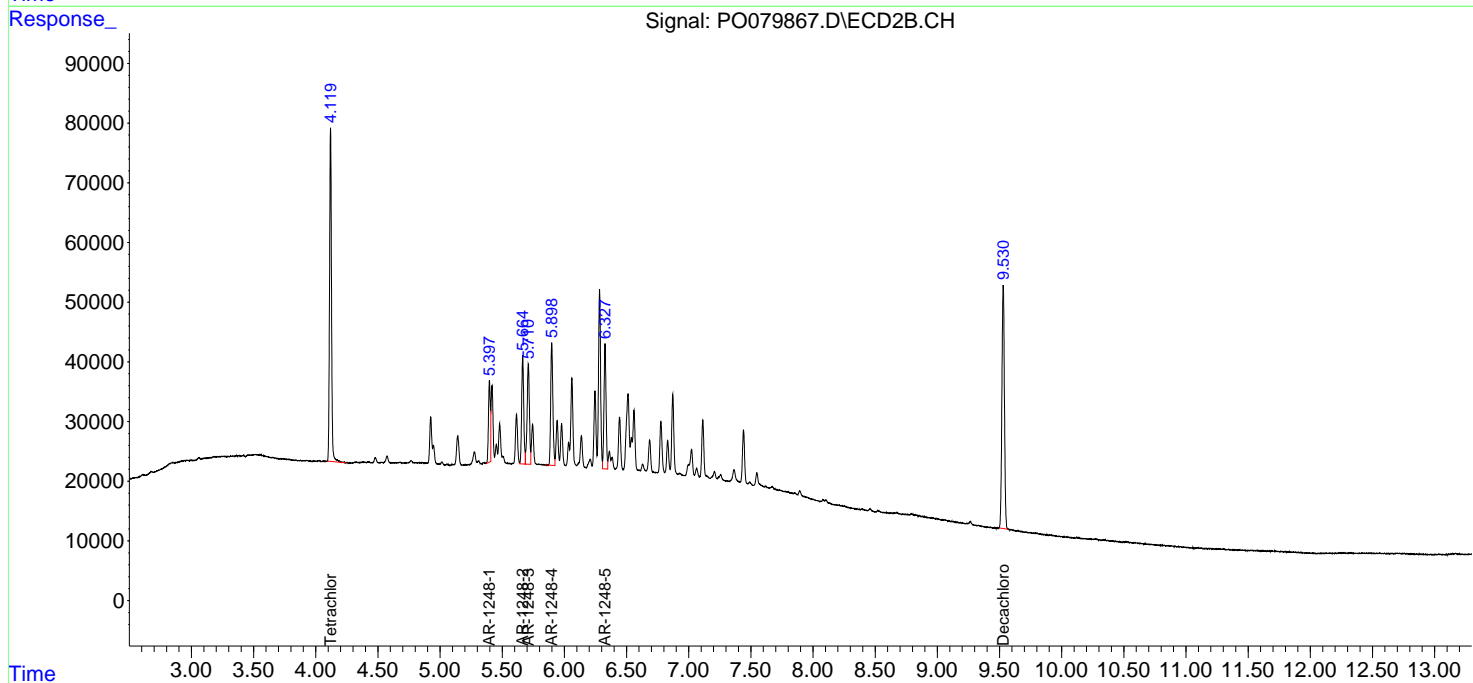
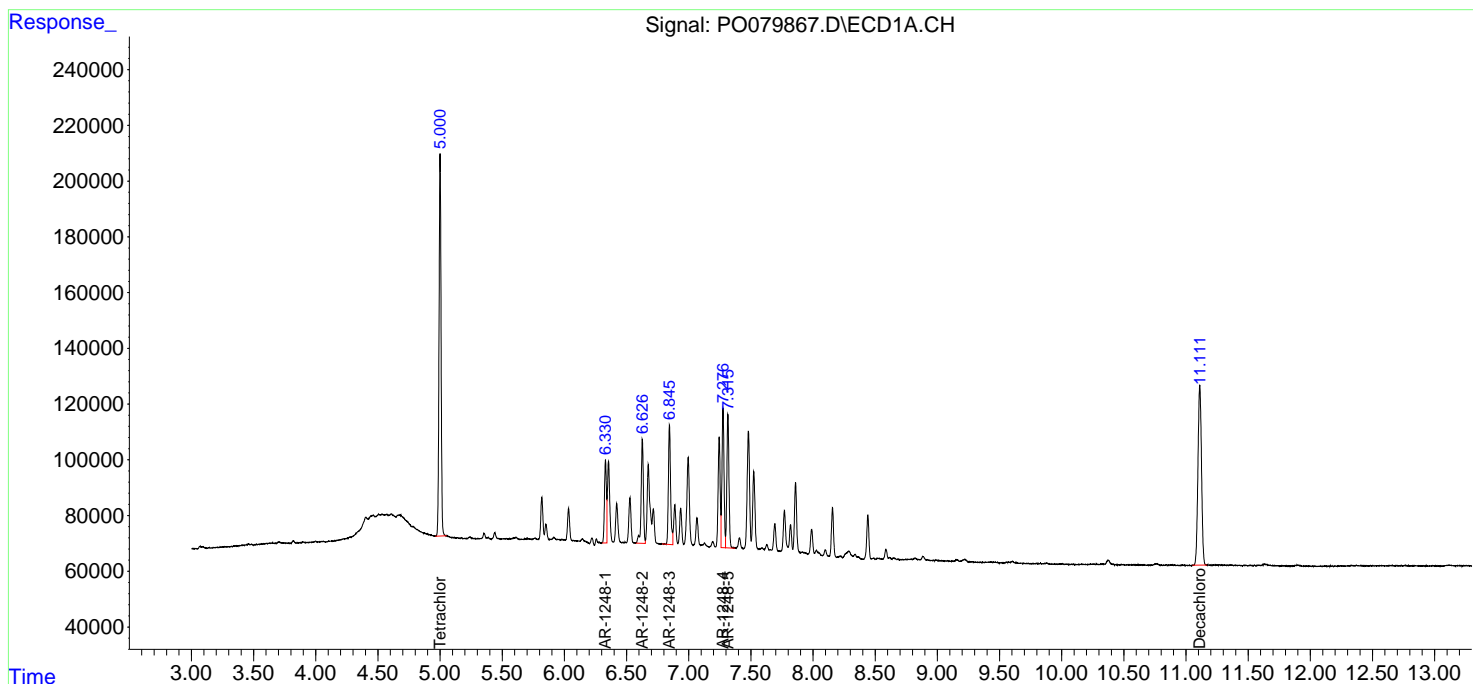
(f)=RT Delta > 1/2 Window (#)=Amounts differ by > 25% (m)=manual int.

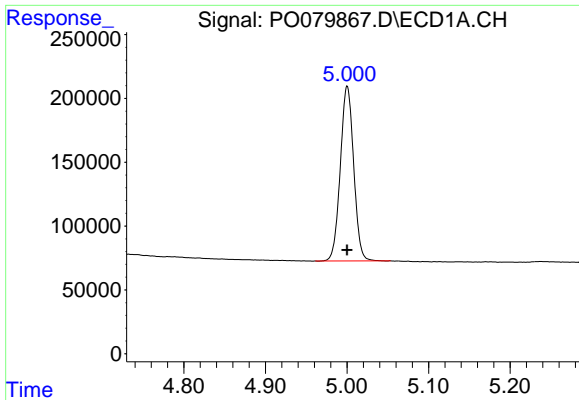
Data Path : Z:\pestpcbsrv\HPCHEM1\ECD_0\Data\P0072821\
 Data File : P0079867.D
 Signal(s) : Signal #1: ECD1A.CH Signal #2: ECD2B.CH
 Acq On : 28 Jul 2021 15:26
 Operator : DD\AJ
 Sample : AR1248ICC250
 Misc :
 ALS Vial : 18 Sample Multiplier: 1

Instrument :
 ECD_O
 ClientSampleId :
 AR1248ICC250

Integration File signal 1: autoint1.e
 Integration File signal 2: autoint2.e
 Quant Time: Jul 28 16:05:38 2021
 Quant Method : Z:\pestpcbsrv\HPCHEM1\ECD_0\methods\P0072821.M
 Quant Title : GC EXTRACTABLES
 QLast Update : Wed Jul 28 16:04:36 2021
 Response via : Initial Calibration
 Integrator: ChemStation 6890 Scale Mode: Small noise peaks clipped

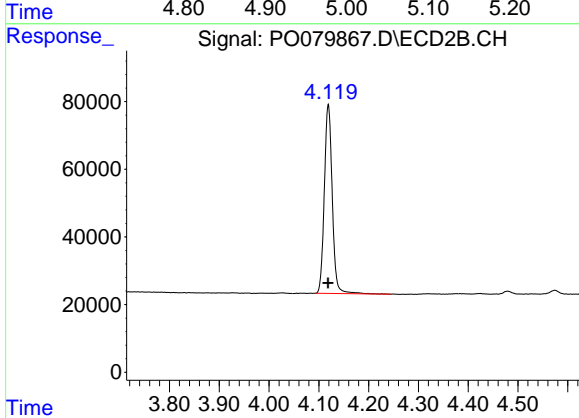
Volume Inj. : 2 µl
 Signal #1 Phase : ZB-MR1 Signal #2 Phase: ZB-MR2
 Signal #1 Info : 30Mx0.32mmx 0.50µ Signal #2 Info : 30M x 0.32mm x 0.25µm



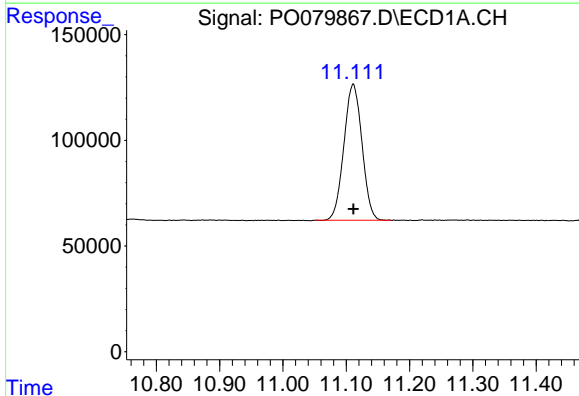


#1 Tetrachloro-m-xylene
 R.T.: 5.000 min
 Delta R.T.: 0.000 min
 Response: 1559493
 Conc: 24.77 ng/ml

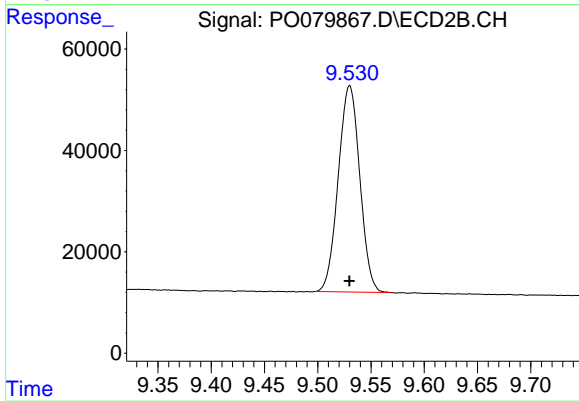
Instrument :
 ECD_O
 ClientSampleId :
 AR1248ICC250



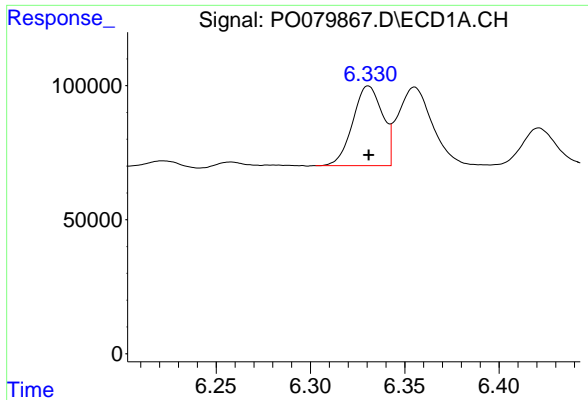
#1 Tetrachloro-m-xylene
 R.T.: 4.119 min
 Delta R.T.: 0.000 min
 Response: 616289
 Conc: 25.61 ng/ml



#2 Decachlorobiphenyl
 R.T.: 11.111 min
 Delta R.T.: 0.000 min
 Response: 1277126
 Conc: 25.57 ng/ml



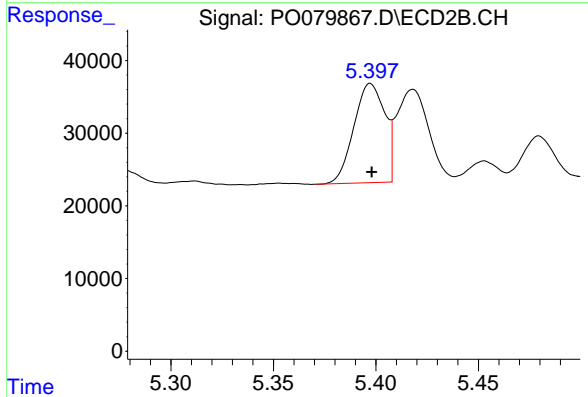
#2 Decachlorobiphenyl
 R.T.: 9.530 min
 Delta R.T.: 0.000 min
 Response: 572656
 Conc: 26.90 ng/ml



#21 AR-1248-1

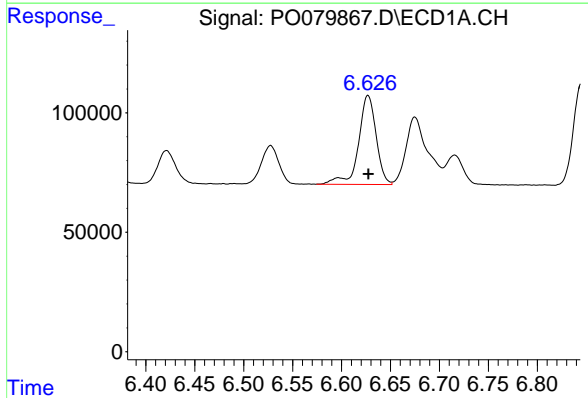
R.T.: 6.331 min
 Delta R.T.: 0.000 min
 Response: 325594
 Conc: 253.50 ng/ml

Instrument :
 ECD_O
 ClientSampleId :
 AR1248ICC250



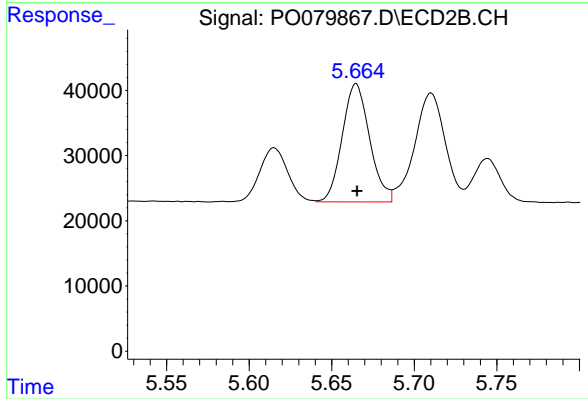
#21 AR-1248-1

R.T.: 5.397 min
 Delta R.T.: 0.000 min
 Response: 142985
 Conc: 264.02 ng/ml



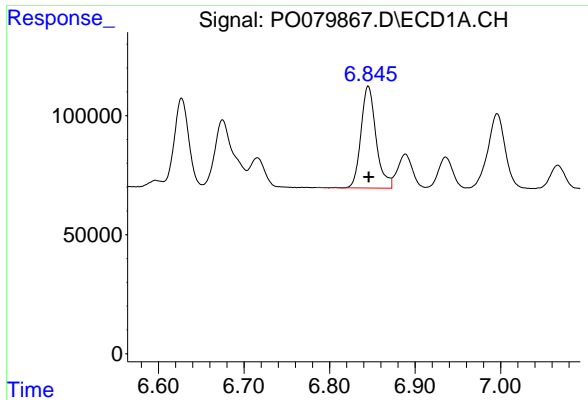
#22 AR-1248-2

R.T.: 6.627 min
 Delta R.T.: 0.000 min
 Response: 467474
 Conc: 274.79 ng/ml



#22 AR-1248-2

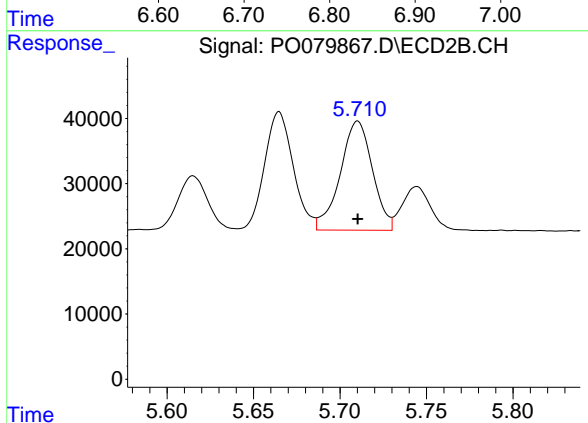
R.T.: 5.665 min
 Delta R.T.: 0.000 min
 Response: 209800
 Conc: 268.53 ng/ml



#23 AR-1248-3

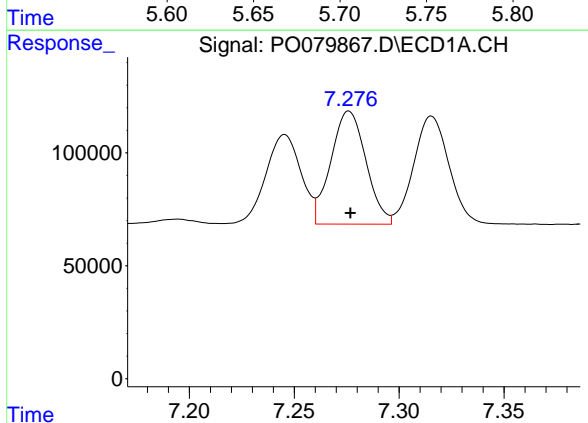
R.T.: 6.845 min
 Delta R.T.: 0.000 min
 Response: 522824
 Conc: 258.38 ng/ml

Instrument :
 ECD_O
 ClientSampleId :
 AR1248ICC250



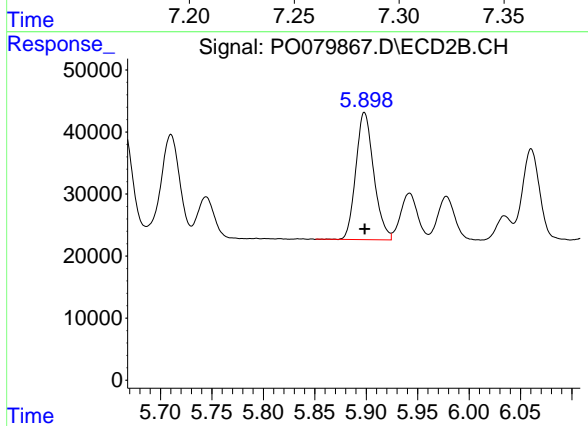
#23 AR-1248-3

R.T.: 5.710 min
 Delta R.T.: 0.000 min
 Response: 216662
 Conc: 266.62 ng/ml



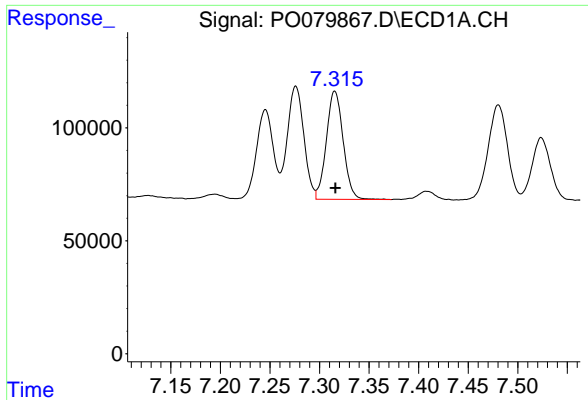
#24 AR-1248-4

R.T.: 7.276 min
 Delta R.T.: 0.000 min
 Response: 583354
 Conc: 254.87 ng/ml



#24 AR-1248-4

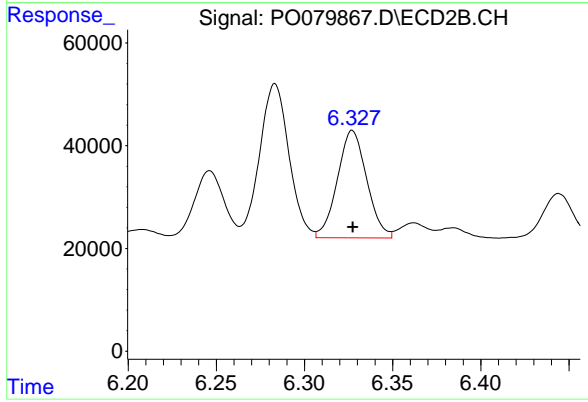
R.T.: 5.898 min
 Delta R.T.: 0.000 min
 Response: 248699
 Conc: 265.24 ng/ml



#25 AR-1248-5

R.T.: 7.316 min
Delta R.T.: 0.000 min
Response: 564399
Conc: 253.37 ng/ml

Instrument :
ECD_O
ClientSampled :
AR1248ICC250



#25 AR-1248-5

R.T.: 6.327 min
Delta R.T.: 0.000 min
Response: 242146
Conc: 260.75 ng/ml