

Data Path : Z:\pestpcbsrv\HPCHEM1\ECD_0\Data\P0072821\
 Data File : P0079917.D
 Signal(s) : Signal #1: ECD1A.CH Signal #2: ECD2B.CH
 Acq On : 29 Jul 2021 7:00
 Operator : DD\AJ
 Sample : M2940-09
 Misc : AR1242 MDL 25 PPB
 ALS Vial : 60 Sample Multiplier: 1

Instrument :
 ECD_0
ClientSampleId :
 MDL-WATER-03-QT3-2021

Manual Integrations
APPROVED
 mohammad
 7/29/2021 1:05:23 PM

Integration File signal 1: autoint1.e
 Integration File signal 2: autoint2.e
 Quant Time: Jul 29 08:18:53 2021
 Quant Method : Z:\pestpcbsrv\HPCHEM1\ECD_0\methods\P0072821.M
 Quant Title : GC EXTRACTABLES
 QLast Update : Wed Jul 28 18:45:36 2021
 Response via : Initial Calibration
 Integrator: ChemStation 6890 Scale Mode: Small noise peaks clipped

Volume Inj. : 2 µl
 Signal #1 Phase : ZB-MR1 Signal #2 Phase: ZB-MR2
 Signal #1 Info : 30Mx0.32mmx 0.50µ Signal #2 Info : 30M x 0.32mm x 0.25µm

Compound	RT#1	RT#2	Resp#1	Resp#2	ng/ml	ng/ml

System Monitoring Compounds						
1) SA Tetrachlo...	5.000	4.118	1289731	498561	21.404	21.770
2) SA Decachlor...	11.108	9.526	1101419	491642	23.479	23.657
Target Compounds						
16) L4 AR-1242-1	6.330	5.396	41702	19206	25.021m	26.968
17) L4 AR-1242-2	6.355	5.417	50970	27630	22.163	28.532 #
18) L4 AR-1242-3	6.419	5.613	38164	14128	26.884	26.331
19) L4 AR-1242-4	6.528	5.710	24043	11353	21.188m	20.218
20) L4 AR-1242-5	7.315	6.281	33092	16692	26.065	25.653

(f)=RT Delta > 1/2 Window (#)=Amounts differ by > 25% (m)=manual int.

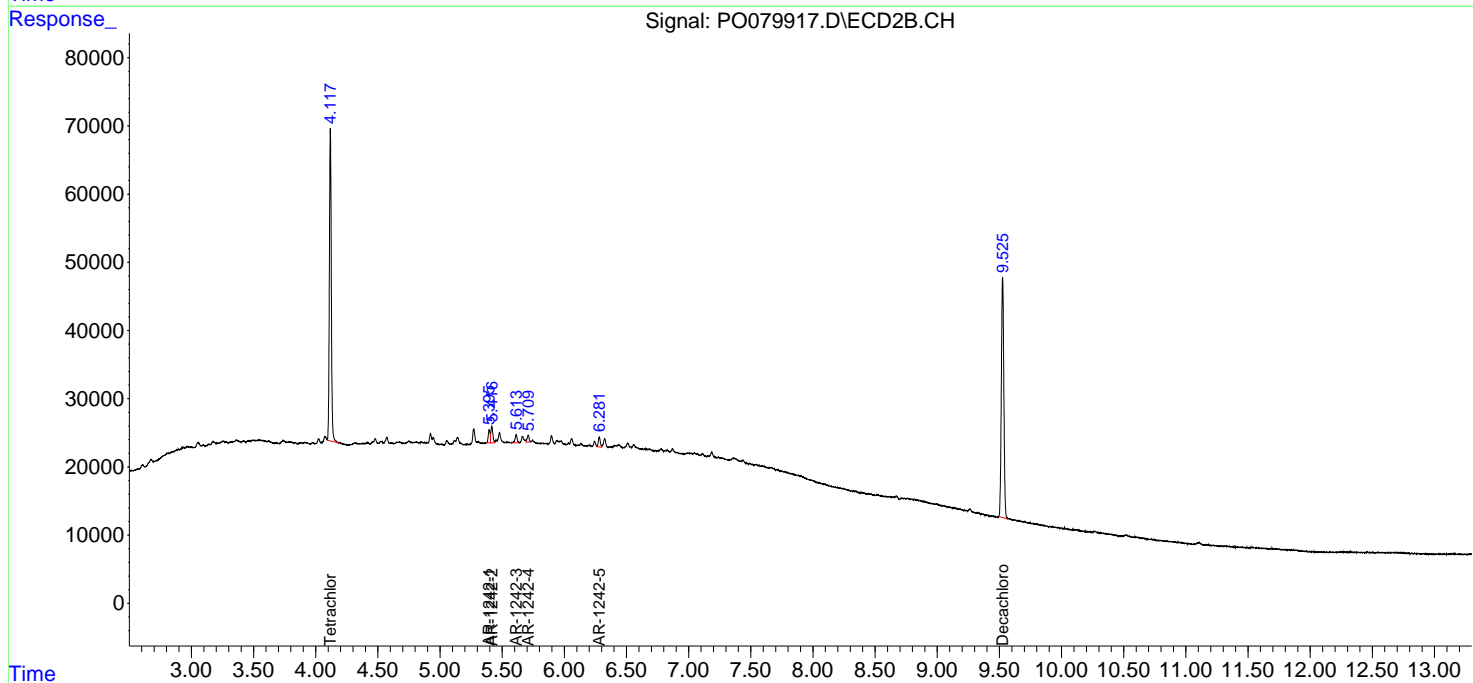
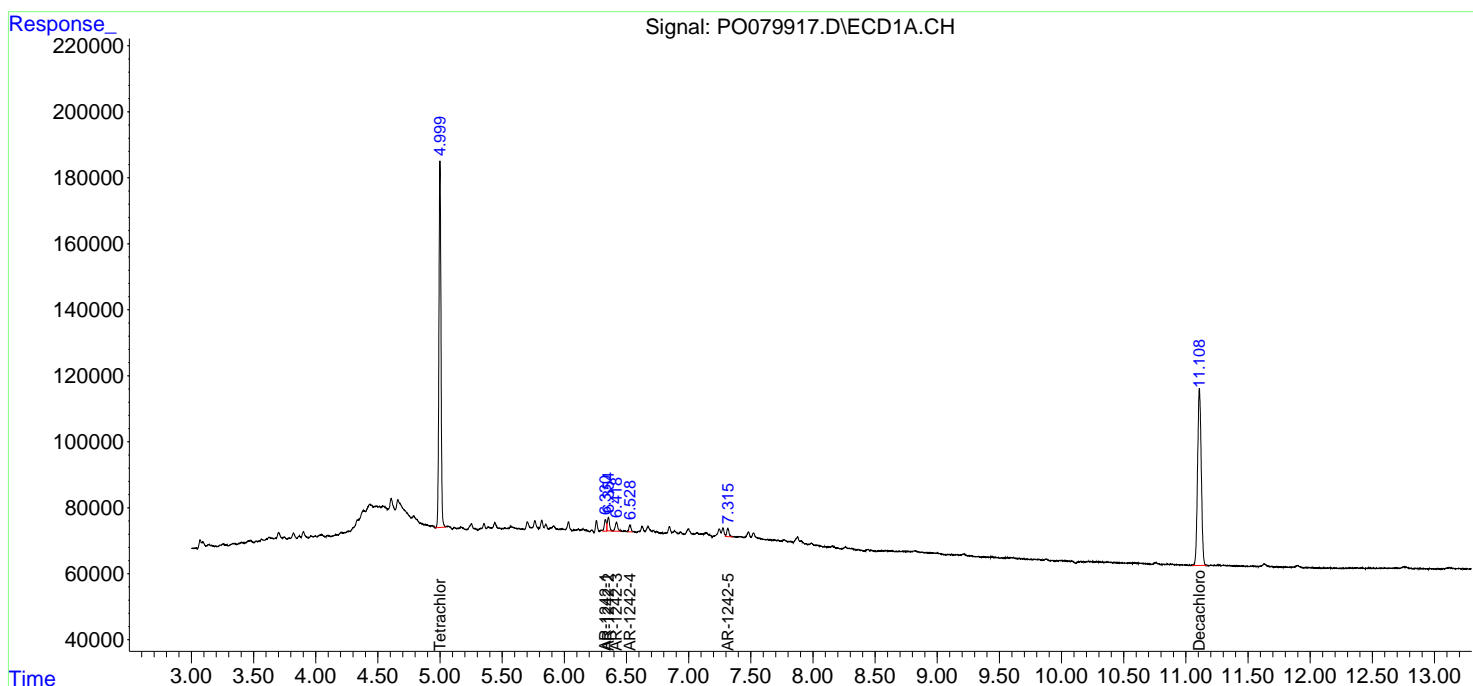
Data Path : Z:\pestpcbsrv\HPCHEM1\ECD_0\Data\P0072821\
 Data File : P0079917.D
 Signal(s) : Signal #1: ECD1A.CH Signal #2: ECD2B.CH
 Acq On : 29 Jul 2021 7:00
 Operator : DD\AJ
 Sample : M2940-09
 Misc : AR1242 MDL 25 PPB
 ALS Vial : 60 Sample Multiplier: 1

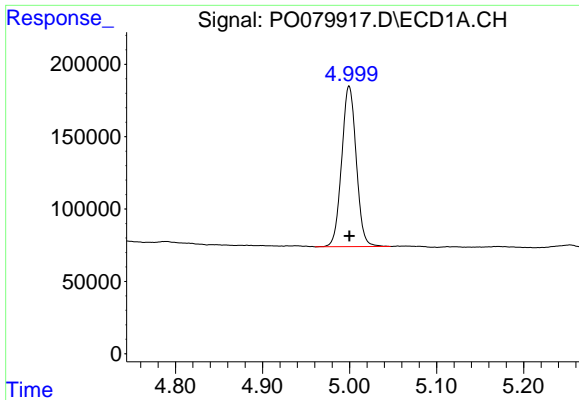
Instrument :
 ECD_0
Client Sampled :
 MDL-WATER-03-QT3-2021

Manual Integrations
APPROVED
 mohammad
 7/29/2021 1:05:23 PM

Integration File signal 1: autoint1.e
 Integration File signal 2: autoint2.e
 Quant Time: Jul 29 08:18:53 2021
 Quant Method : Z:\pestpcbsrv\HPCHEM1\ECD_0\methods\P0072821.M
 Quant Title : GC EXTRACTABLES
 QLast Update : Wed Jul 28 18:45:36 2021
 Response via : Initial Calibration
 Integrator: ChemStation 6890 Scale Mode: Small noise peaks clipped

Volume Inj. : 2 µl
 Signal #1 Phase : ZB-MR1 Signal #2 Phase: ZB-MR2
 Signal #1 Info : 30Mx0.32mmx 0.50µ Signal #2 Info : 30M x 0.32mm x 0.25µm

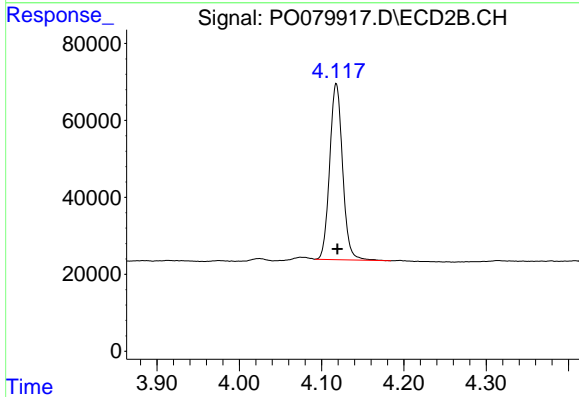




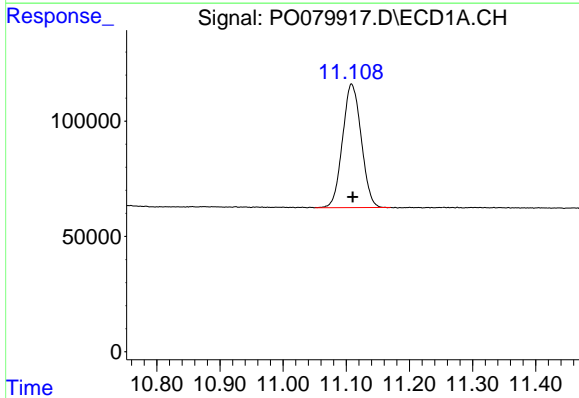
#1 Tetrachloro-m-xylene
 R.T.: 5.000 min
 Delta R.T.: 0.000 min
 Response: 1289731
 Conc: 21.40 ng/ml

Instrument :
 ECD_O
ClientSampleId :
 MDL-WATER-03-QT3-2021

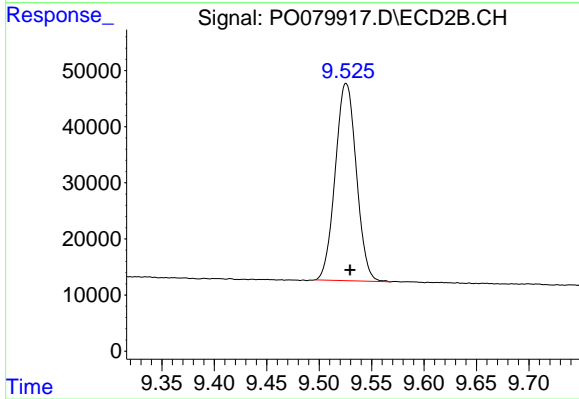
Manual Integrations
APPROVED
 mohammad
 7/29/2021 1:05:23 PM



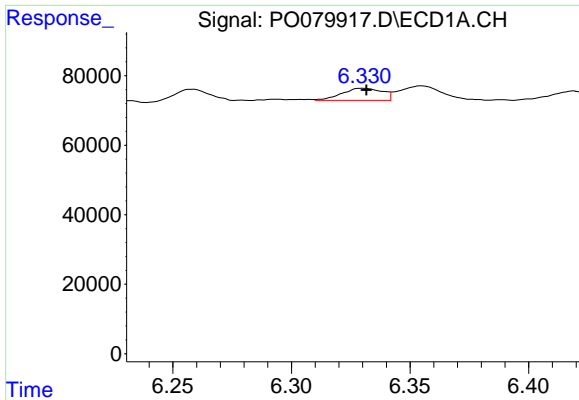
#1 Tetrachloro-m-xylene
 R.T.: 4.118 min
 Delta R.T.: -0.001 min
 Response: 498561
 Conc: 21.77 ng/ml



#2 Decachlorobiphenyl
 R.T.: 11.108 min
 Delta R.T.: -0.002 min
 Response: 1101419
 Conc: 23.48 ng/ml



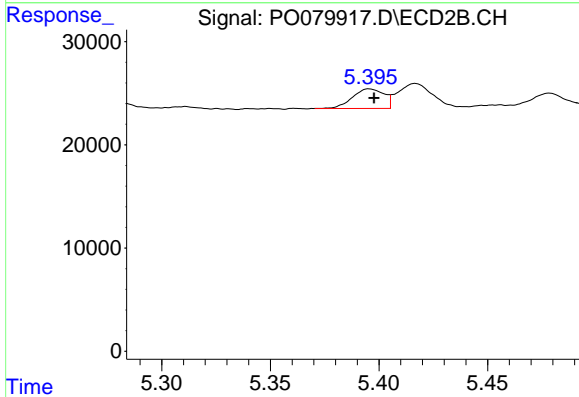
#2 Decachlorobiphenyl
 R.T.: 9.526 min
 Delta R.T.: -0.004 min
 Response: 491642
 Conc: 23.66 ng/ml



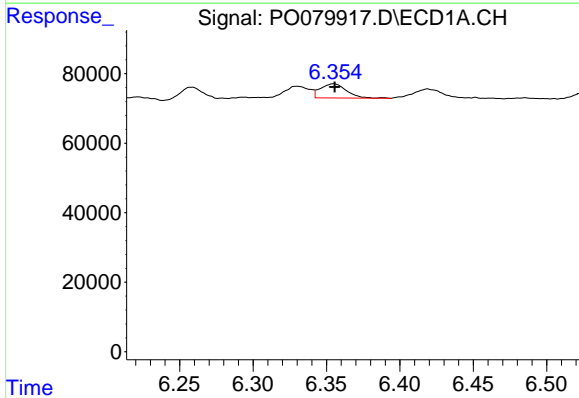
#16 AR-1242-1
 R.T.: 6.330 min
 Delta R.T.: -0.002 min
 Response: 41702
 Conc: 25.02 ng/ml m

Instrument :
 ECD_O
ClientSampleId :
 MDL-WATER-03-QT3-2021

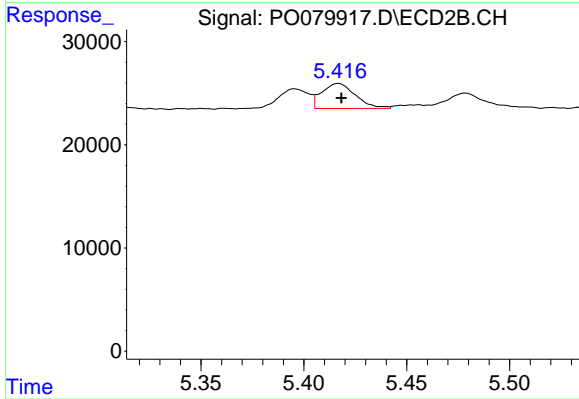
Manual Integrations
APPROVED
 mohammad
 7/29/2021 1:05:23 PM



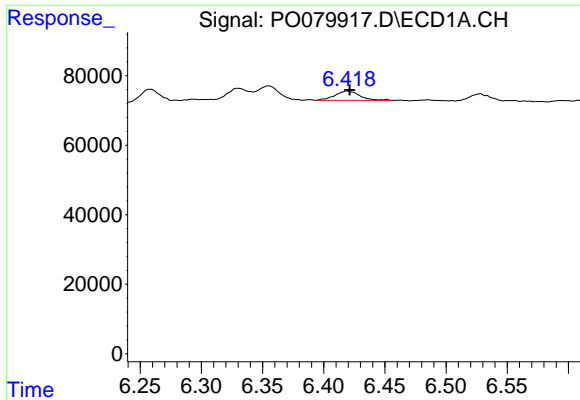
#16 AR-1242-1
 R.T.: 5.396 min
 Delta R.T.: -0.002 min
 Response: 19206
 Conc: 26.97 ng/ml



#17 AR-1242-2
 R.T.: 6.355 min
 Delta R.T.: 0.000 min
 Response: 50970
 Conc: 22.16 ng/ml



#17 AR-1242-2
 R.T.: 5.417 min
 Delta R.T.: -0.002 min
 Response: 27630
 Conc: 28.53 ng/ml

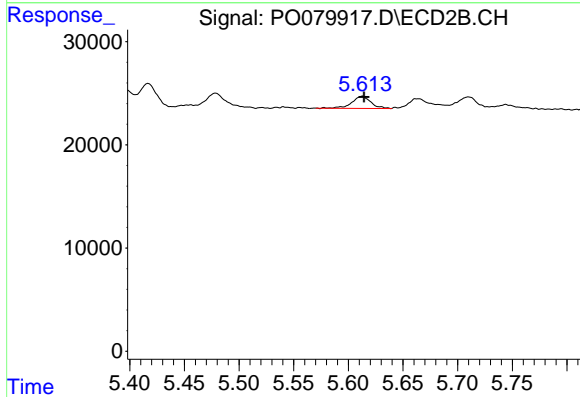


#18 AR-1242-3

R.T.: 6.419 min
 Delta R.T.: -0.002 min
 Response: 38164
 Conc: 26.88 ng/ml

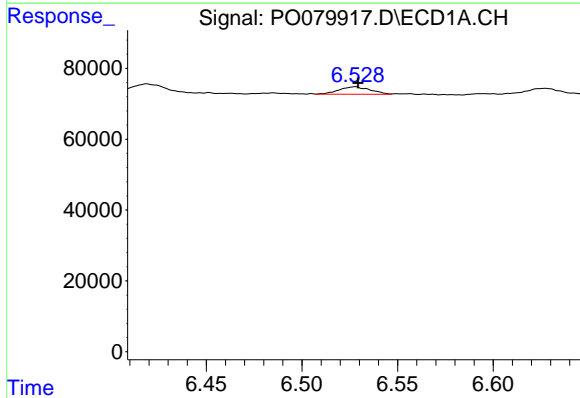
Instrument :
 ECD_O
ClientSampled :
 MDL-WATER-03-QT3-2021

Manual Integrations
APPROVED
 mohammad
 7/29/2021 1:05:23 PM



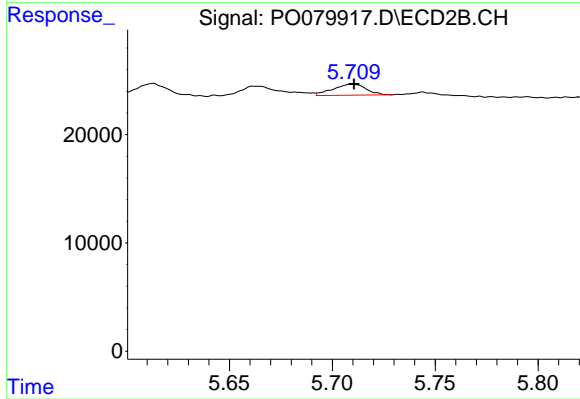
#18 AR-1242-3

R.T.: 5.613 min
 Delta R.T.: -0.002 min
 Response: 14128
 Conc: 26.33 ng/ml



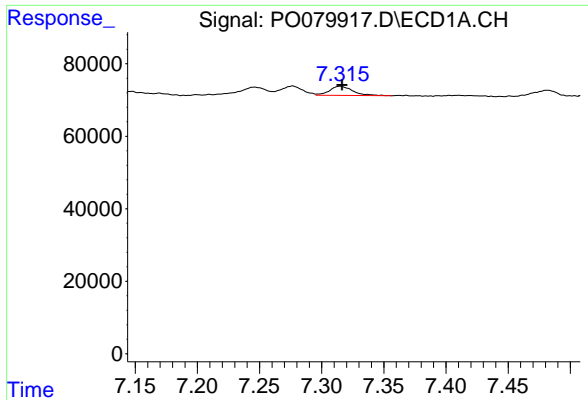
#19 AR-1242-4

R.T.: 6.528 min
 Delta R.T.: -0.002 min
 Response: 24043
 Conc: 21.19 ng/ml m



#19 AR-1242-4

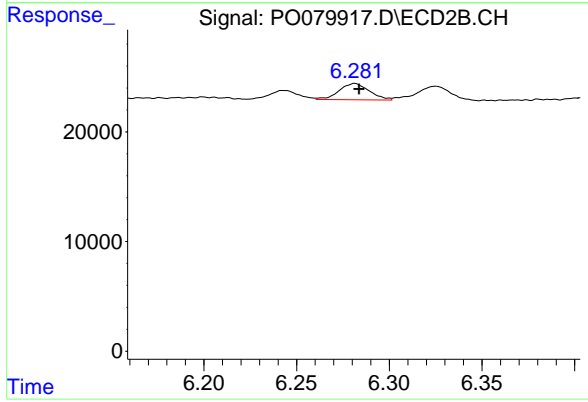
R.T.: 5.710 min
 Delta R.T.: 0.000 min
 Response: 11353
 Conc: 20.22 ng/ml



#20 AR-1242-5
 R.T.: 7.315 min
 Delta R.T.: -0.001 min
 Response: 33092
 Conc: 26.07 ng/ml

Instrument :
 ECD_O
ClientSampled :
 MDL-WATER-03-QT3-2021

Manual Integrations
APPROVED
 mohammad
 7/29/2021 1:05:23 PM



#20 AR-1242-5
 R.T.: 6.281 min
 Delta R.T.: -0.002 min
 Response: 16692
 Conc: 25.65 ng/ml