

Data Path : Z:\pestpcbsrv\HPCHEM1\ECD_0\Data\P0072823\
 Data File : P0096446.D
 Signal(s) : Signal #1: ECD1A.ch Signal #2: ECD2B.ch
 Acq On : 28 Jul 2023 13:41
 Operator : YP/AJ
 Sample : 03810-01
 Misc :
 ALS Vial : 7 Sample Multiplier: 1

Instrument :
 ECD_0
 ClientSampleId :
 B-P3A

Manual Integrations
APPROVED

Reviewed By :Yogesh Patel 07/31/2023
 Supervised By :Ankita Jodhani 07/31/2023

Integration File signal 1: autoint1.e
 Integration File signal 2: autoint2.e
 Quant Time: Jul 30 05:27:46 2023
 Quant Method : Z:\pestpcbsrv\HPCHEM1\ECD_0\methods\P0072723.M
 Quant Title : GC EXTRACTABLES
 QLast Update : Fri Jul 28 01:38:03 2023
 Response via : Initial Calibration
 Integrator: ChemStation

Volume Inj. : 2 µl
 Signal #1 Phase : ZB-MR1 Signal #2 Phase: ZB-MR2
 Signal #1 Info : 30Mx0.32mmx 0.50µ Signal #2 Info : 30M x 0.32mm x 0.25µm

Compound	RT#1	RT#2	Resp#1	Resp#2	ng/ml	ng/ml

System Monitoring Compounds						
1) SA Tetrachlo...	4.417	3.626	63046543	25944349	18.869	18.315
2) SA Decachlor...	10.249	8.653	36583194	17837081	16.535	15.164
Target Compounds						
31) L7 AR-1260-1	7.216	6.203	1837070	981012	14.119	13.462
32) L7 AR-1260-2	7.473	6.392	4937477	1603354	36.039	18.540 #
33) L7 AR-1260-3	7.761	6.545	3023134	955080	19.773m	11.934 #
34) L7 AR-1260-4	8.050	7.017	4425123	910014	36.341	13.936 #
35) L7 AR-1260-5	8.391	7.262	2323876	1494307	10.567	10.545

(f)=RT Delta > 1/2 Window (#)=Amounts differ by > 25% (m)=manual int.

Data Path : Z:\pestpcbsrv\HPCHEM1\ECD_O\Data\PO072823\
 Data File : PO096446.D
 Signal(s) : Signal #1: ECD1A.ch Signal #2: ECD2B.ch
 Acq On : 28 Jul 2023 13:41
 Operator : YP/AJ
 Sample : 03810-01
 Misc :
 ALS Vial : 7 Sample Multiplier: 1

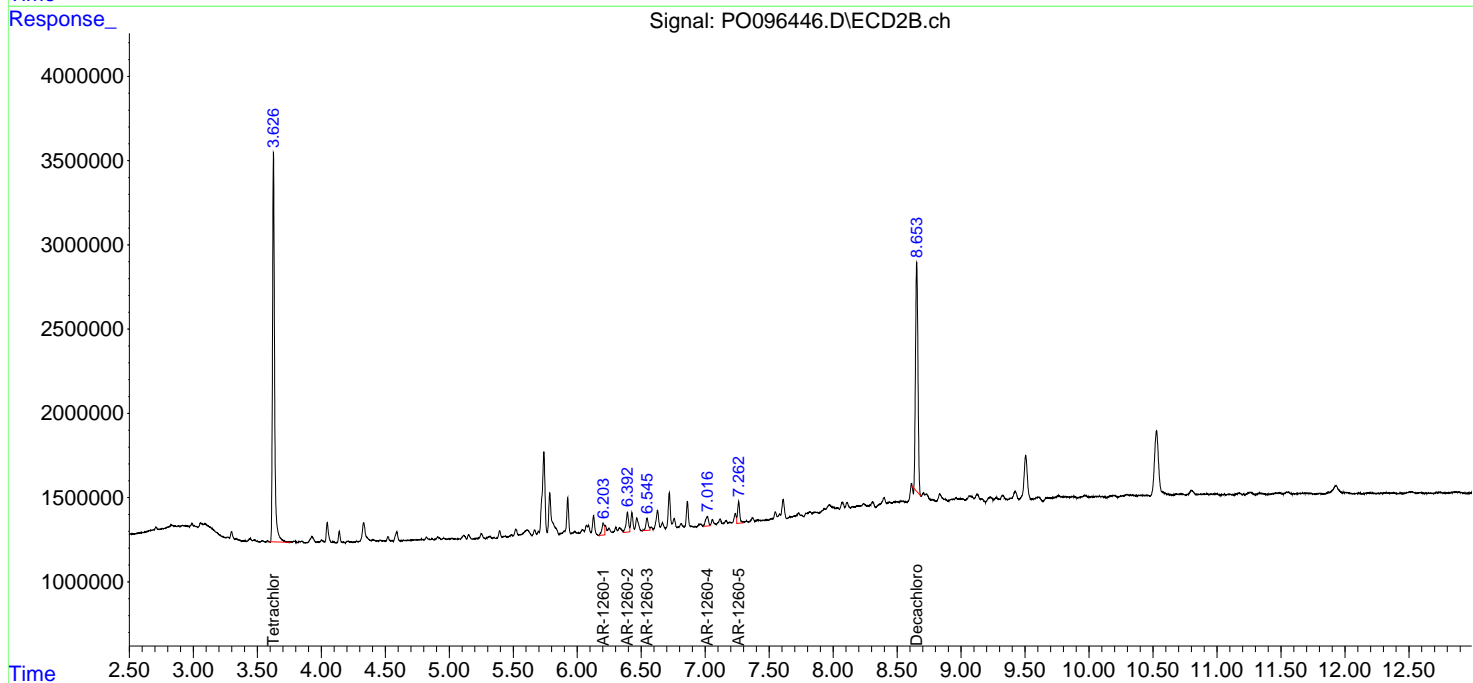
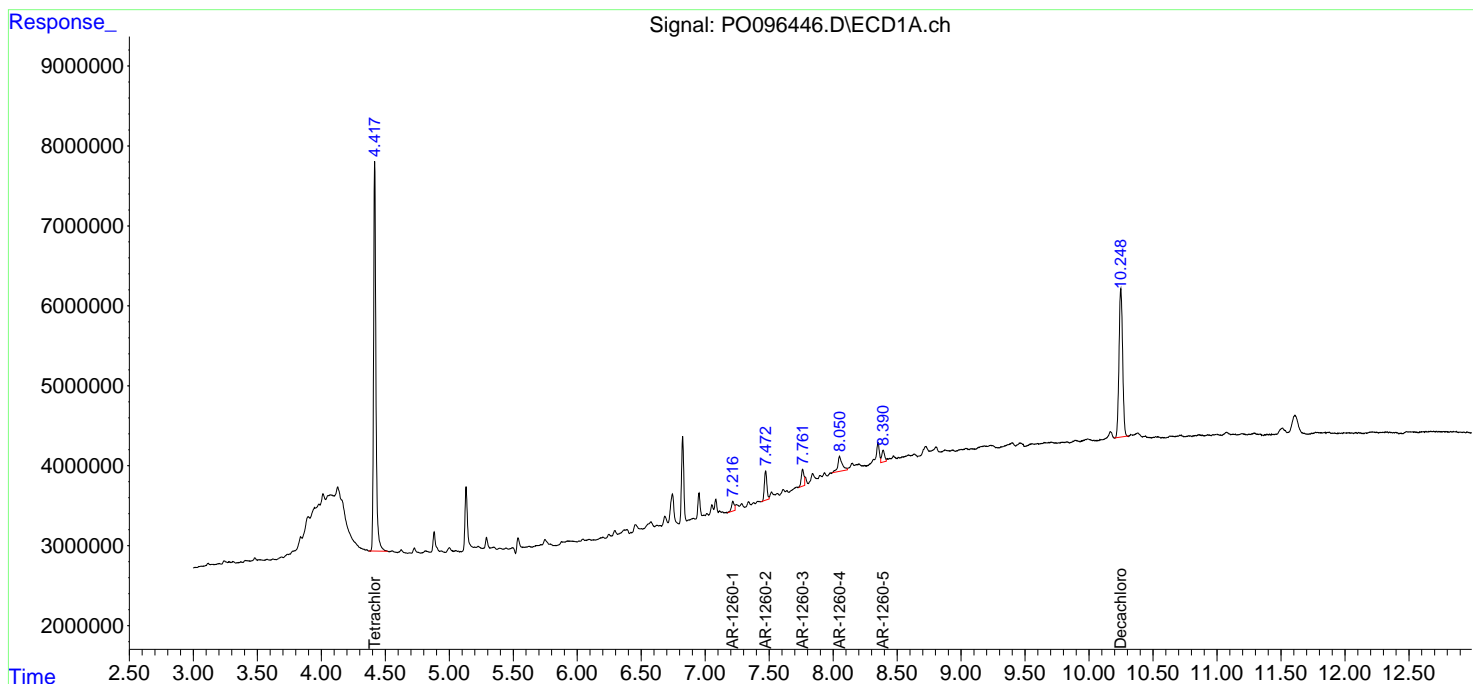
Instrument :
 ECD_O
 ClientSampleId :
 B-P3A

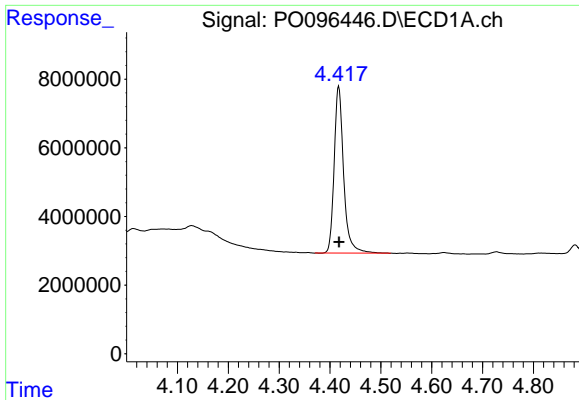
Manual Integrations
APPROVED

Reviewed By :Yogesh Patel 07/31/2023
 Supervised By :Ankita Jodhani 07/31/2023

Integration File signal 1: autoint1.e
 Integration File signal 2: autoint2.e
 Quant Time: Jul 30 05:27:46 2023
 Quant Method : Z:\pestpcbsrv\HPCHEM1\ECD_O\methods\PO072723.M
 Quant Title : GC EXTRACTABLES
 QLast Update : Fri Jul 28 01:38:03 2023
 Response via : Initial Calibration
 Integrator: ChemStation

Volume Inj. : 2 µl
 Signal #1 Phase : ZB-MR1 Signal #2 Phase: ZB-MR2
 Signal #1 Info : 30Mx0.32mmx 0.50µ Signal #2 Info : 30M x 0.32mm x 0.25µm



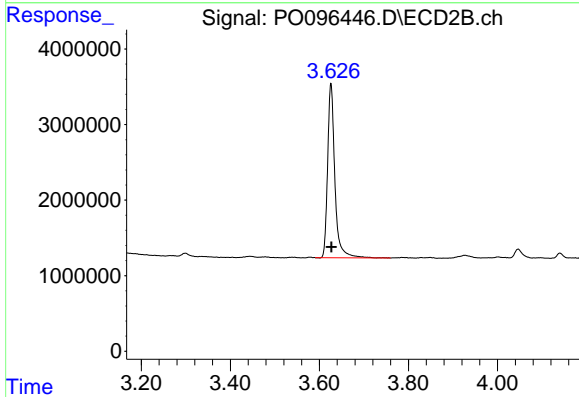


#1 Tetrachloro-m-xylene
 R.T.: 4.417 min
 Delta R.T.: 0.000 min
 Response: 63046543
 Conc: 18.87 ng/ml

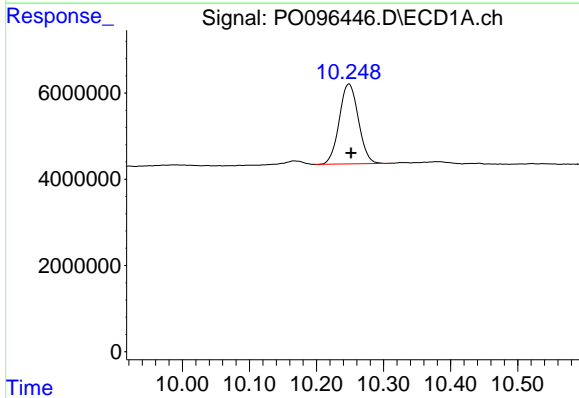
Instrument :
 ECD_O
 ClientSampleId :
 B-P3A

Manual Integrations
 APPROVED

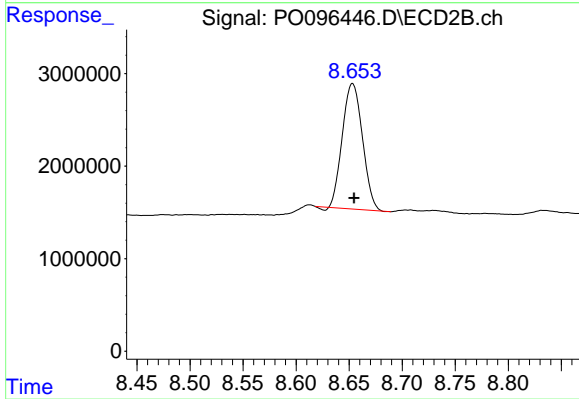
Reviewed By :Yogesh Patel 07/31/2023
 Supervised By :Ankita Jodhani 07/31/2023



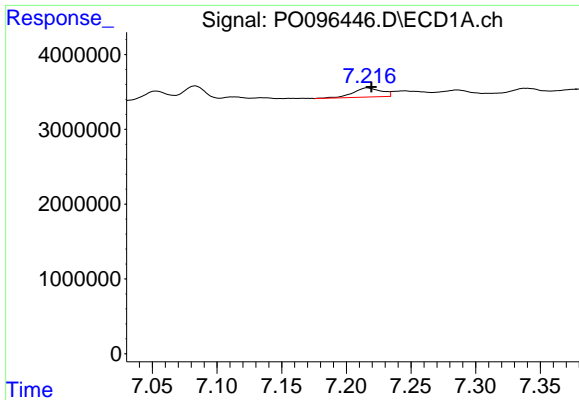
#1 Tetrachloro-m-xylene
 R.T.: 3.626 min
 Delta R.T.: 0.000 min
 Response: 25944349
 Conc: 18.32 ng/ml



#2 Decachlorobiphenyl
 R.T.: 10.249 min
 Delta R.T.: -0.003 min
 Response: 36583194
 Conc: 16.53 ng/ml



#2 Decachlorobiphenyl
 R.T.: 8.653 min
 Delta R.T.: -0.002 min
 Response: 17837081
 Conc: 15.16 ng/ml



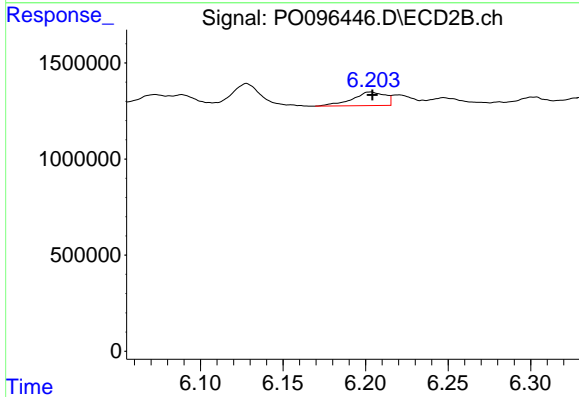
#31 AR-1260-1

R.T.: 7.216 min
 Delta R.T.: -0.003 min
 Response: 1837070
 Conc: 14.12 ng/ml

Instrument :
 ECD_O
 ClientSampleId :
 B-P3A

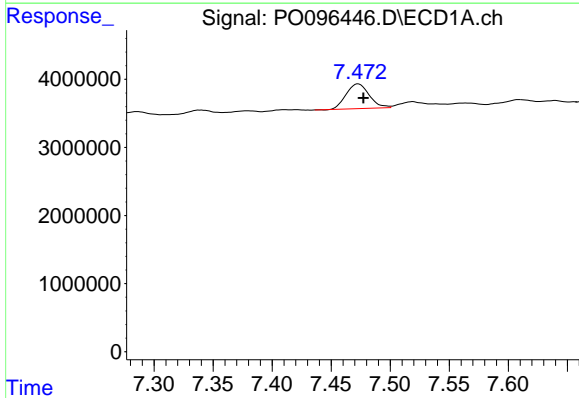
Manual Integrations
 APPROVED

Reviewed By :Yogesh Patel 07/31/2023
 Supervised By :Ankita Jodhani 07/31/2023



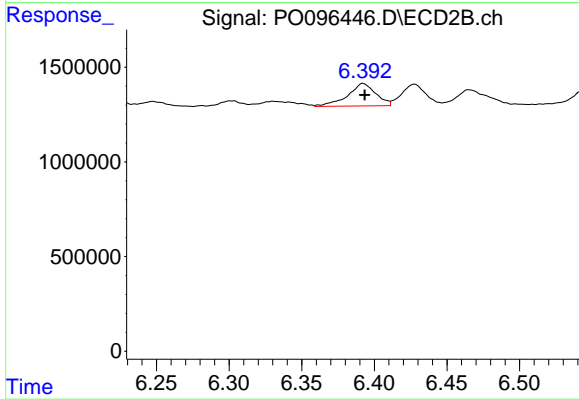
#31 AR-1260-1

R.T.: 6.203 min
 Delta R.T.: -0.001 min
 Response: 981012
 Conc: 13.46 ng/ml



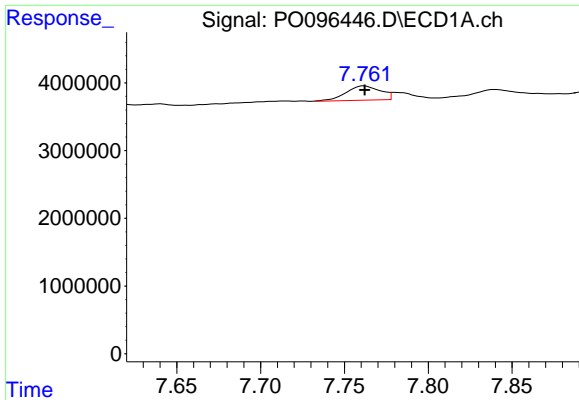
#32 AR-1260-2

R.T.: 7.473 min
 Delta R.T.: -0.004 min
 Response: 4937477
 Conc: 36.04 ng/ml



#32 AR-1260-2

R.T.: 6.392 min
 Delta R.T.: 0.000 min
 Response: 1603354
 Conc: 18.54 ng/ml



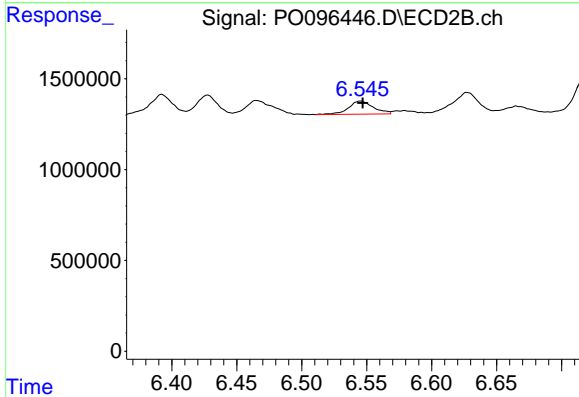
#33 AR-1260-3

R.T.: 7.761 min
 Delta R.T.: -0.001 min
 Response: 3023134
 Conc: 19.77 ng/ml

Instrument :
 ECD_O
 ClientSampleId :
 B-P3A

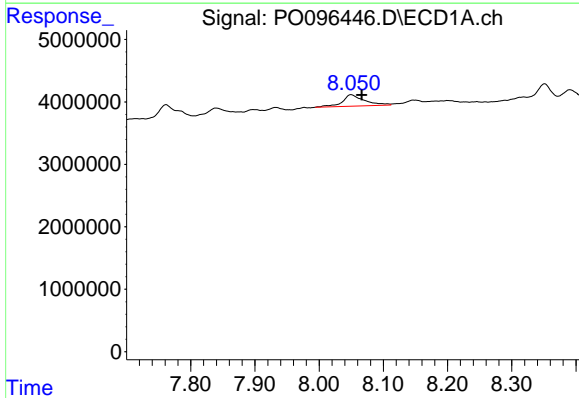
Manual Integrations
 APPROVED

Reviewed By :Yogesh Patel 07/31/2023
 Supervised By :Ankita Jodhani 07/31/2023



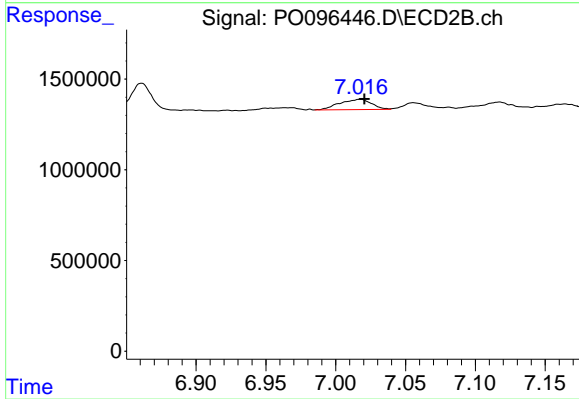
#33 AR-1260-3

R.T.: 6.545 min
 Delta R.T.: -0.002 min
 Response: 955080
 Conc: 11.93 ng/ml



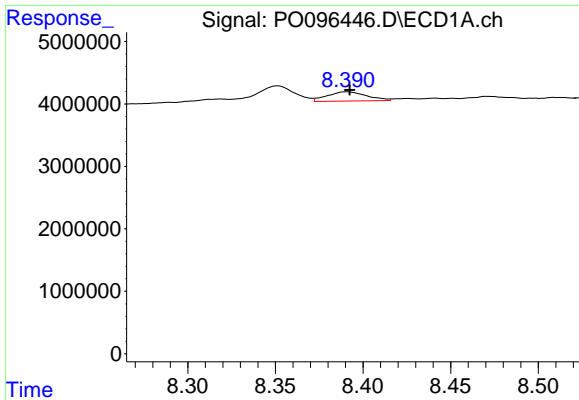
#34 AR-1260-4

R.T.: 8.050 min
 Delta R.T.: -0.016 min
 Response: 4425123
 Conc: 36.34 ng/ml



#34 AR-1260-4

R.T.: 7.017 min
 Delta R.T.: -0.003 min
 Response: 910014
 Conc: 13.94 ng/ml



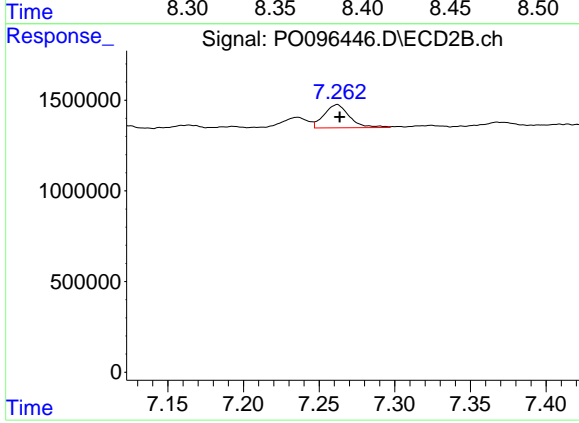
#35 AR-1260-5

R.T.: 8.391 min
 Delta R.T.: -0.001 min
 Response: 2323876
 Conc: 10.57 ng/ml

Instrument :
 ECD_O
 ClientSampleId :
 B-P3A

Manual Integrations
 APPROVED

Reviewed By :Yogesh Patel 07/31/2023
 Supervised By :Ankita Jodhani 07/31/2023



#35 AR-1260-5

R.T.: 7.262 min
 Delta R.T.: -0.002 min
 Response: 1494307
 Conc: 10.55 ng/ml