

Data Path : Z:\pestpcbsrv\HPCHEM1\ECD\_0\Data\P0072919\  
 Data File : P0058498.D  
 Signal(s) : Signal #1: ECD1A.CH Signal #2: ECD2B.CH  
 Acq On : 27 Jul 2019 14:10  
 Operator : SM/AJ  
 Sample : K4032-02  
 Misc :  
 ALS Vial : 5 Sample Multiplier: 1

Instrument :  
 ECD\_0  
 ClientSampleId :  
 S14-05-S

Integration File signal 1: autoint1.e  
 Integration File signal 2: autoint2.e  
 Quant Time: Jul 28 03:28:05 2019  
 Quant Method : Z:\pestpcbsrv\HPCHEM1\ECD\_0\methods\P0072819.M  
 Quant Title : GC EXTRACTABLES  
 QLast Update : Sat Jul 27 06:49:05 2019  
 Response via : Initial Calibration  
 Integrator: ChemStation 6890 Scale Mode: Small noise peaks clipped

Volume Inj. : 2 µl  
 Signal #1 Phase : ZB-MR1 Signal #2 Phase: ZB-MR2  
 Signal #1 Info : 30Mx0.32mmx 0.50µ Signal #2 Info : 30M x 0.32mm x 0.25µm

Compound	RT#1	RT#2	Resp#1	Resp#2	ng/ml	ng/ml
-----						
System Monitoring Compounds						
1) SA Tetrachlo...	4.177	3.524	726533	687447	17.215	17.208
2) SA Decachlor...	9.668	8.413	755663	557261	13.954	14.118

Target Compounds

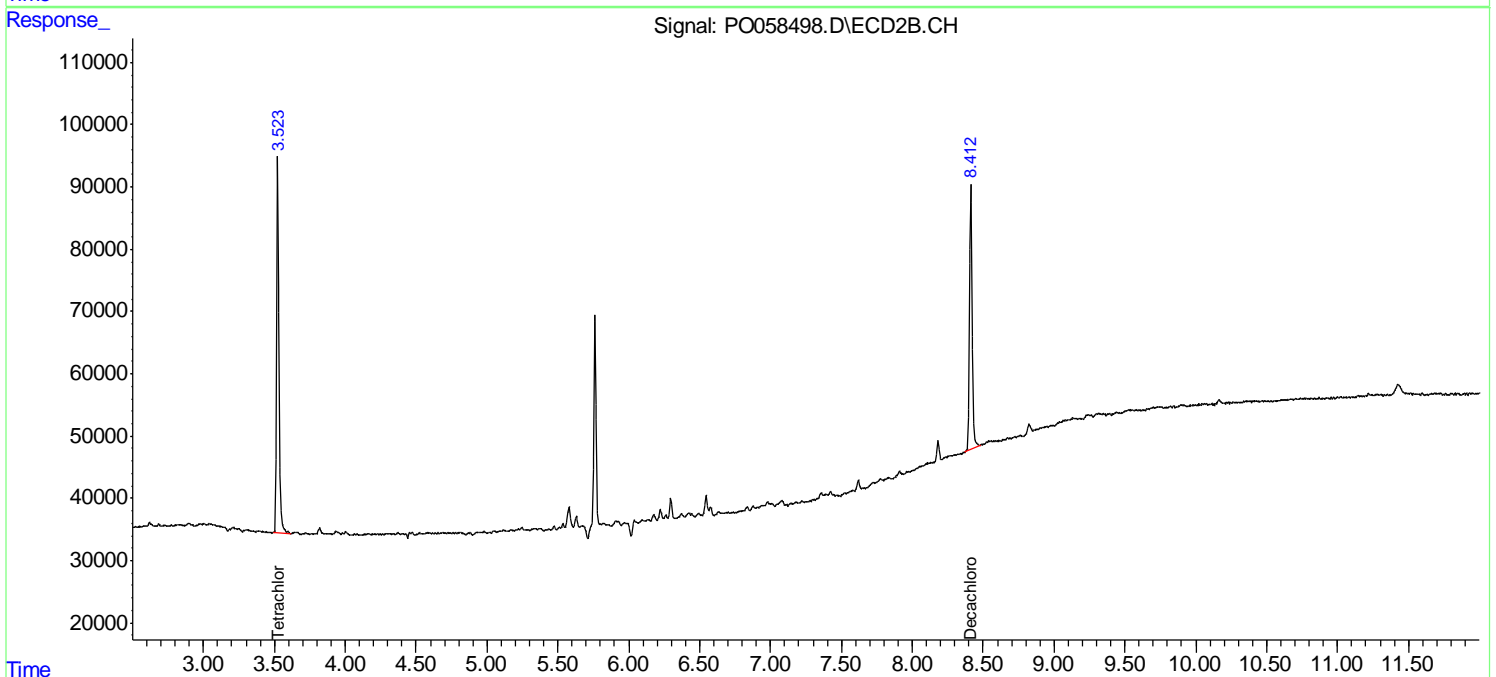
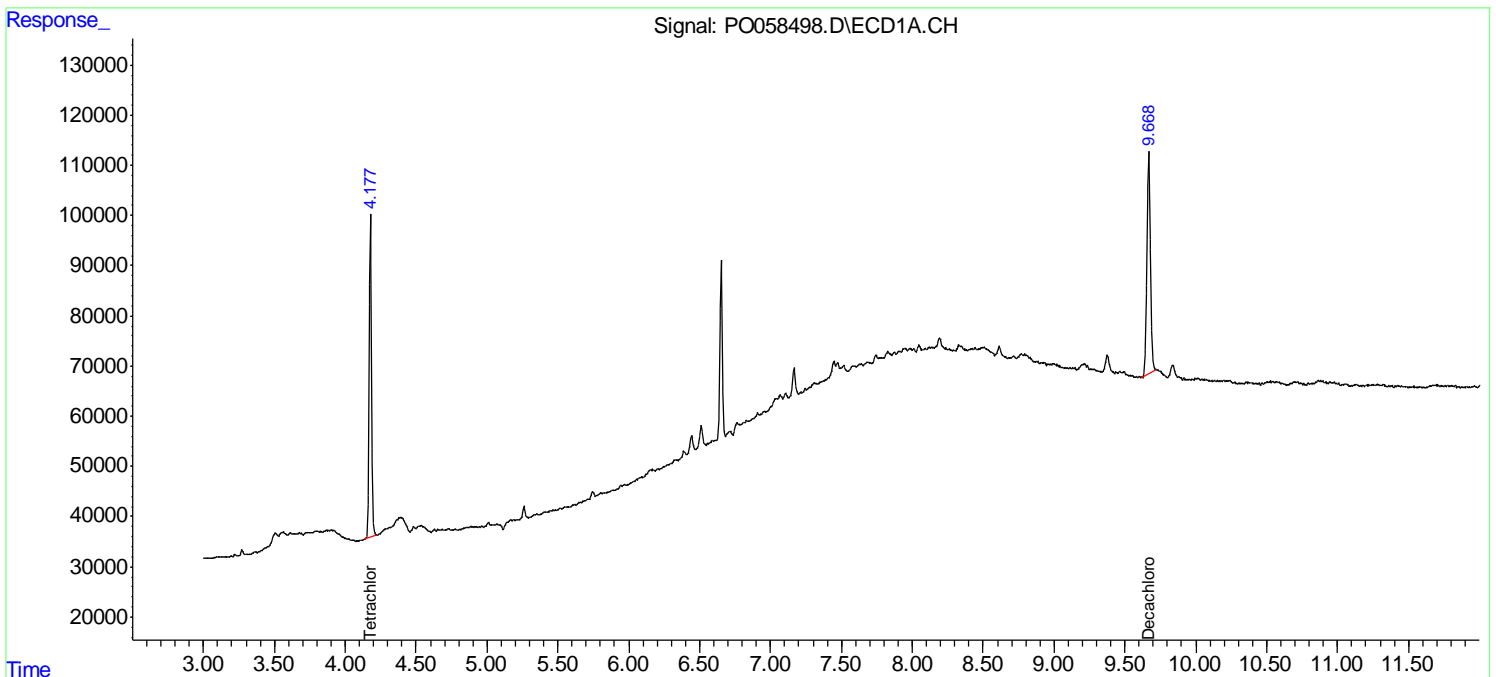
(f)=RT Delta > 1/2 Window (#)=Amounts differ by > 25% (m)=manual int.

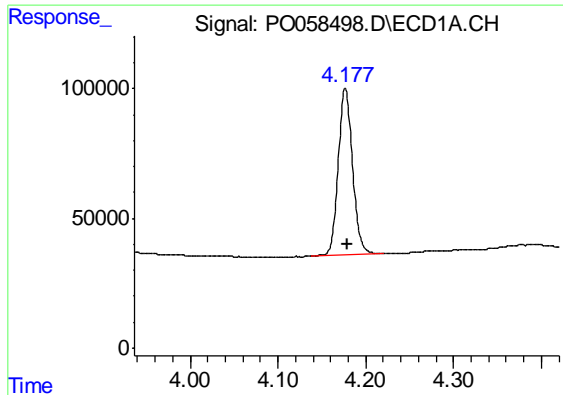
Data Path : Z:\pestpcbsrv\HPCHEM1\ECD\_O\Data\PO072919\  
 Data File : PO058498.D  
 Signal(s) : Signal #1: ECD1A.CH Signal #2: ECD2B.CH  
 Acq On : 27 Jul 2019 14:10  
 Operator : SM/AJ  
 Sample : K4032-02  
 Misc :  
 ALS Vial : 5 Sample Multiplier: 1

Instrument :  
 ECD\_O  
 ClientSampleId :  
 S14-05-S

Integration File signal 1: autoint1.e  
 Integration File signal 2: autoint2.e  
 Quant Time: Jul 28 03:28:05 2019  
 Quant Method : Z:\pestpcbsrv\HPCHEM1\ECD\_O\methods\PO072819.M  
 Quant Title : GC EXTRACTABLES  
 QLast Update : Sat Jul 27 06:49:05 2019  
 Response via : Initial Calibration  
 Integrator: ChemStation 6890 Scale Mode: Small noise peaks clipped

Volume Inj. : 2 µl  
 Signal #1 Phase : ZB-MR1 Signal #2 Phase: ZB-MR2  
 Signal #1 Info : 30Mx0.32mmx 0.50µ Signal #2 Info : 30M x 0.32mm x 0.25µm

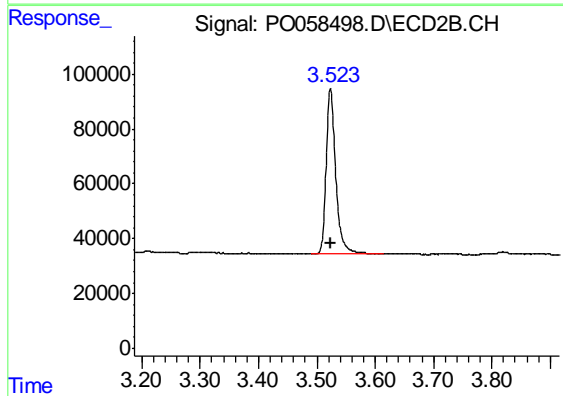




#1 Tetrachloro-m-xylene

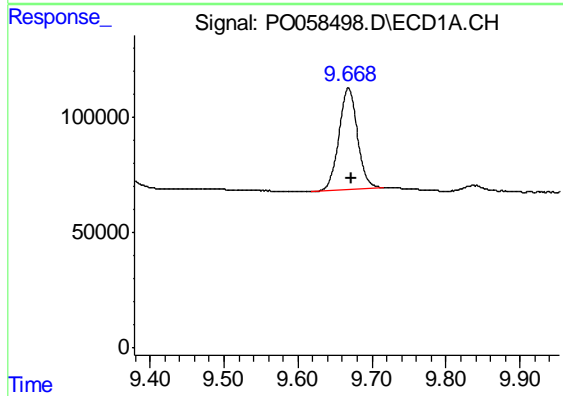
R.T.: 4.177 min  
 Delta R.T.: -0.002 min  
 Response: 726533  
 Conc: 17.22 ng/ml

Instrument :  
 ECD\_O  
 ClientSampleId :  
 S14-05-S



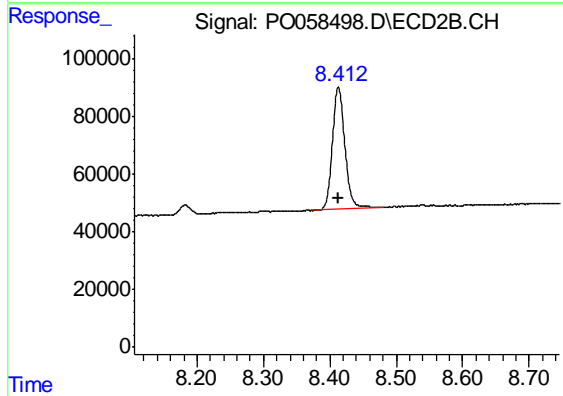
#1 Tetrachloro-m-xylene

R.T.: 3.524 min  
 Delta R.T.: -0.001 min  
 Response: 687447  
 Conc: 17.21 ng/ml



#2 Decachlorobiphenyl

R.T.: 9.668 min  
 Delta R.T.: -0.004 min  
 Response: 755663  
 Conc: 13.95 ng/ml



#2 Decachlorobiphenyl

R.T.: 8.413 min  
 Delta R.T.: -0.001 min  
 Response: 557261  
 Conc: 14.12 ng/ml