

Data Path : Z:\pestpcbsrv\HPCHEM1\ECD_0\Data\P0072919\
 Data File : P0058504.D
 Signal(s) : Signal #1: ECD1A.CH Signal #2: ECD2B.CH
 Acq On : 27 Jul 2019 15:52
 Operator : SM/AJ
 Sample : K4032-08
 Misc :
 ALS Vial : 11 Sample Multiplier: 1

Instrument :
 ECD_0
 ClientSampleId :
 S14-09-B

Integration File signal 1: autoint1.e
 Integration File signal 2: autoint2.e
 Quant Time: Jul 28 03:30:15 2019
 Quant Method : Z:\pestpcbsrv\HPCHEM1\ECD_0\methods\P0072819.M
 Quant Title : GC EXTRACTABLES
 QLast Update : Sat Jul 27 06:49:05 2019
 Response via : Initial Calibration
 Integrator: ChemStation 6890 Scale Mode: Small noise peaks clipped

Volume Inj. : 2 µl
 Signal #1 Phase : ZB-MR1 Signal #2 Phase: ZB-MR2
 Signal #1 Info : 30Mx0.32mmx 0.50µ Signal #2 Info : 30M x 0.32mm x 0.25µm

Compound	RT#1	RT#2	Resp#1	Resp#2	ng/ml	ng/ml
----------	------	------	--------	--------	-------	-------

 System Monitoring Compounds

1) SA Tetrachlo...	4.178	3.523	749684	696067	17.764	17.423
2) SA Decachlor...	9.669	8.414	766106	593525	14.146	15.036

Target Compounds

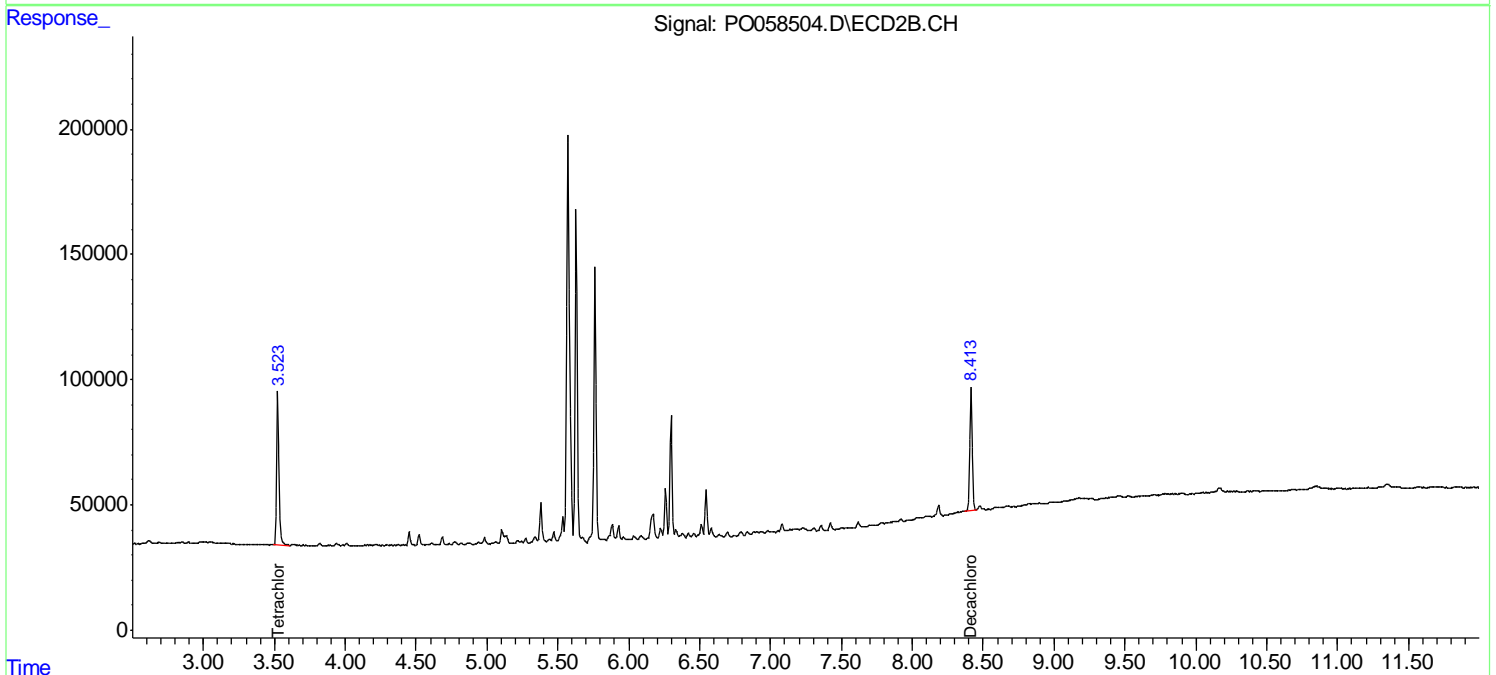
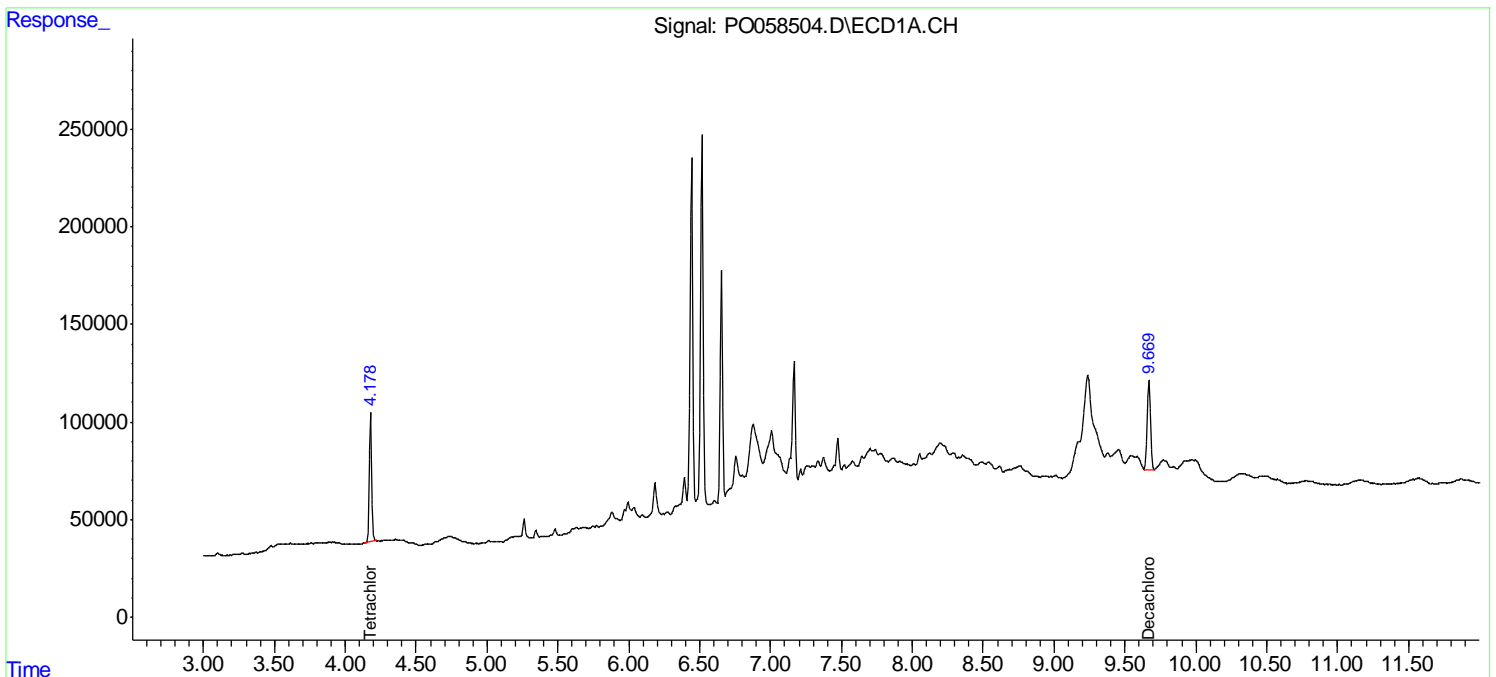
(f)=RT Delta > 1/2 Window (#)=Amounts differ by > 25% (m)=manual int.

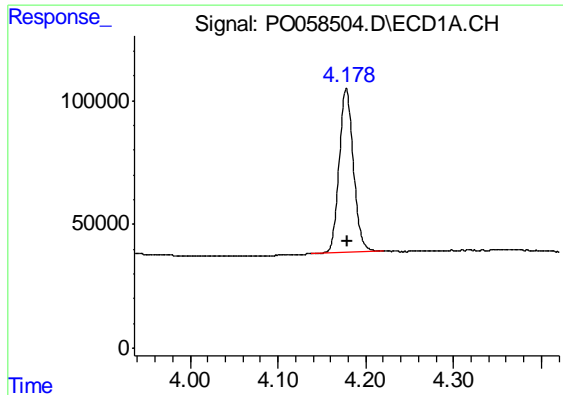
Data Path : Z:\pestpcbsrv\HPCHEM1\ECD_0\Data\P0072919\
 Data File : P0058504.D
 Signal(s) : Signal #1: ECD1A.CH Signal #2: ECD2B.CH
 Acq On : 27 Jul 2019 15:52
 Operator : SM/AJ
 Sample : K4032-08
 Misc :
 ALS Vial : 11 Sample Multiplier: 1

Instrument :
 ECD_O
 ClientSampled :
 S14-09-B

Integration File signal 1: autoint1.e
 Integration File signal 2: autoint2.e
 Quant Time: Jul 28 03:30:15 2019
 Quant Method : Z:\pestpcbsrv\HPCHEM1\ECD_0\methods\P0072819.M
 Quant Title : GC EXTRACTABLES
 QLast Update : Sat Jul 27 06:49:05 2019
 Response via : Initial Calibration
 Integrator: ChemStation 6890 Scale Mode: Small noise peaks clipped

Volume Inj. : 2 µl
 Signal #1 Phase : ZB-MR1 Signal #2 Phase: ZB-MR2
 Signal #1 Info : 30Mx0.32mmx 0.50µ Signal #2 Info : 30M x 0.32mm x 0.25µm

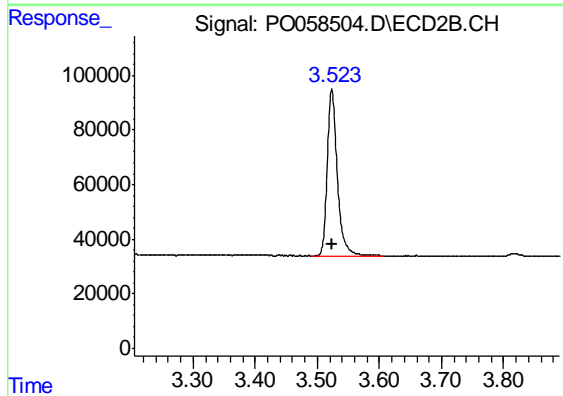




#1 Tetrachloro-m-xylene

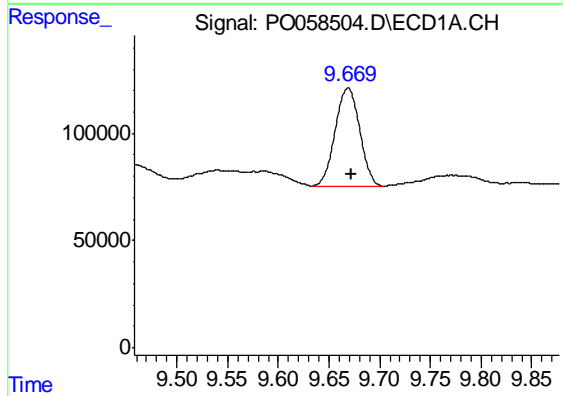
R.T.: 4.178 min
 Delta R.T.: -0.001 min
 Response: 749684
 Conc: 17.76 ng/ml

Instrument :
 ECD_O
 ClientSampleId :
 S14-09-B



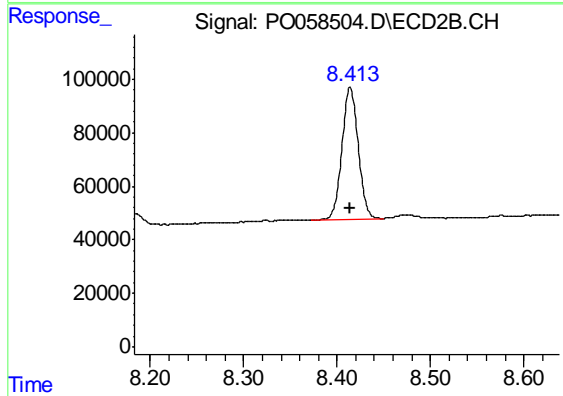
#1 Tetrachloro-m-xylene

R.T.: 3.523 min
 Delta R.T.: -0.001 min
 Response: 696067
 Conc: 17.42 ng/ml



#2 Decachlorobiphenyl

R.T.: 9.669 min
 Delta R.T.: -0.004 min
 Response: 766106
 Conc: 14.15 ng/ml



#2 Decachlorobiphenyl

R.T.: 8.414 min
 Delta R.T.: 0.000 min
 Response: 593525
 Conc: 15.04 ng/ml