

Data Path : Z:\pestpcbsrv\HPCHEM1\ECD_0\Data\P0072919\
 Data File : P0058509.D
 Signal(s) : Signal #1: ECD1A.CH Signal #2: ECD2B.CH
 Acq On : 27 Jul 2019 17:18
 Operator : SM/AJ
 Sample : K4032-13
 Misc :
 ALS Vial : 16 Sample Multiplier: 1

Instrument :
 ECD_0
ClientSampled :
 S9-04-S-01

Manual Integrations
APPROVED
 Ankita
 7/29/2019 3:40:55 PM

Integration File signal 1: autoint1.e
 Integration File signal 2: autoint2.e
 Quant Time: Jul 28 03:32:20 2019
 Quant Method : Z:\pestpcbsrv\HPCHEM1\ECD_0\methods\P0072819.M
 Quant Title : GC EXTRACTABLES
 QLast Update : Sat Jul 27 06:49:05 2019
 Response via : Initial Calibration
 Integrator: ChemStation 6890 Scale Mode: Small noise peaks clipped

Volume Inj. : 2 µl
 Signal #1 Phase : ZB-MR1 Signal #2 Phase: ZB-MR2
 Signal #1 Info : 30Mx0.32mmx 0.50µ Signal #2 Info : 30M x 0.32mm x 0.25µm

Compound	RT#1	RT#2	Resp#1	Resp#2	ng/ml	ng/ml

System Monitoring Compounds						
1) SA Tetrachlo...	4.177	3.523	790781	735039	18.738	18.399
2) SA Decachlor...	9.666	8.413	770072	562515	14.220	14.251
Target Compounds						
21) L5 AR-1248-1	5.332	4.581	146426	111183	144.833m	139.040m
22) L5 AR-1248-2	5.599	4.812	184567	120920	127.676m	109.134m
23) L5 AR-1248-3	5.800	4.852	165689	141007	100.869m	123.890m
24) L5 AR-1248-4	6.199	5.022	340455	128679	168.106m	92.112m#
25) L5 AR-1248-5	6.236	5.406	229489	109685	118.885m	79.180m#
26) L6 AR-1254-1	6.170	5.367	220516	327756	93.388	126.520 #
27) L6 AR-1254-2	6.388	5.512	718337	352022	186.390	153.760
28) L6 AR-1254-3	6.750	5.910	813931	633551	200.989	172.191
29) L6 AR-1254-4	7.034	6.137	897827	560231	249.352	240.938
30) L6 AR-1254-5	7.447	6.546	1686779	1756025	465.349	509.058

(f)=RT Delta > 1/2 Window (#)=Amounts differ by > 25% (m)=manual int.

Data Path : Z:\pestpcbsrv\HPCHEM1\ECD_O\Data\PO072919\
 Data File : PO058509.D
 Signal(s) : Signal #1: ECD1A.CH Signal #2: ECD2B.CH
 Acq On : 27 Jul 2019 17:18
 Operator : SM/AJ
 Sample : K4032-13
 Misc :
 ALS Vial : 16 Sample Multiplier: 1

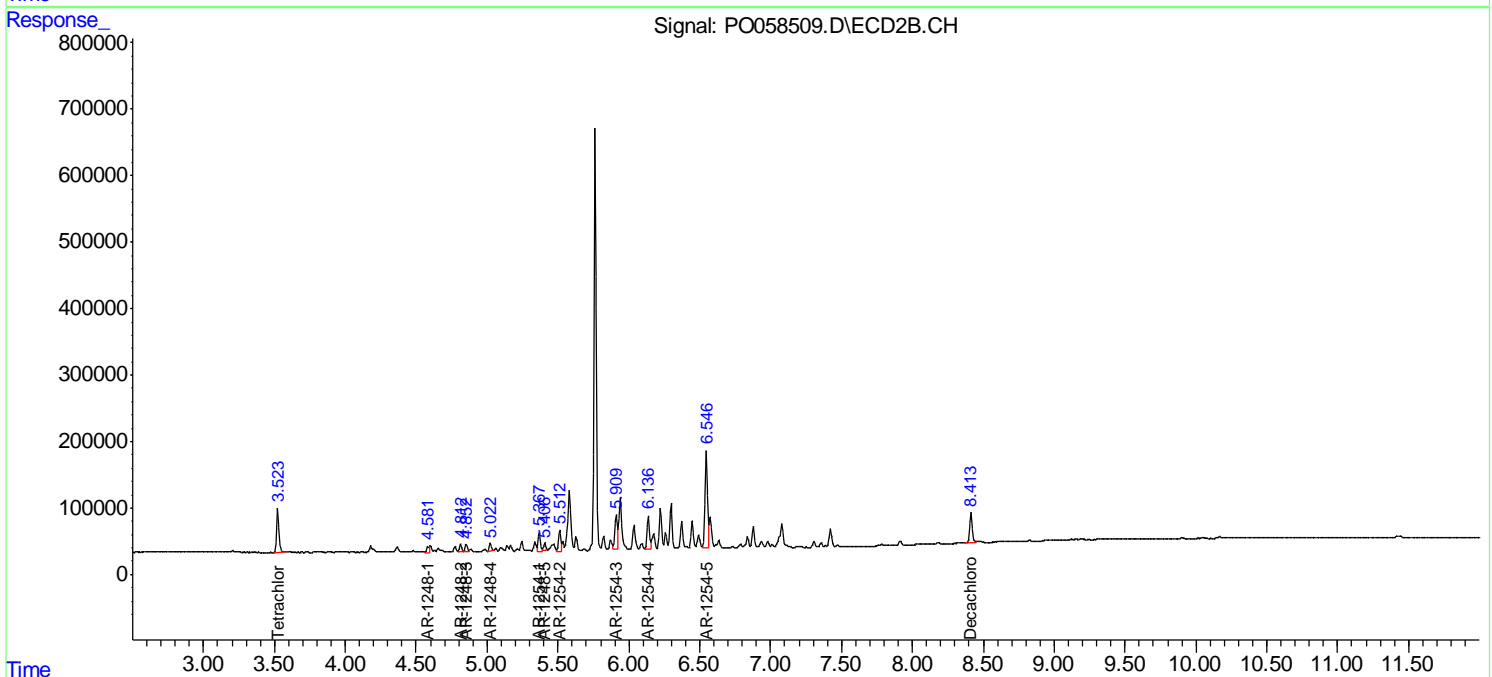
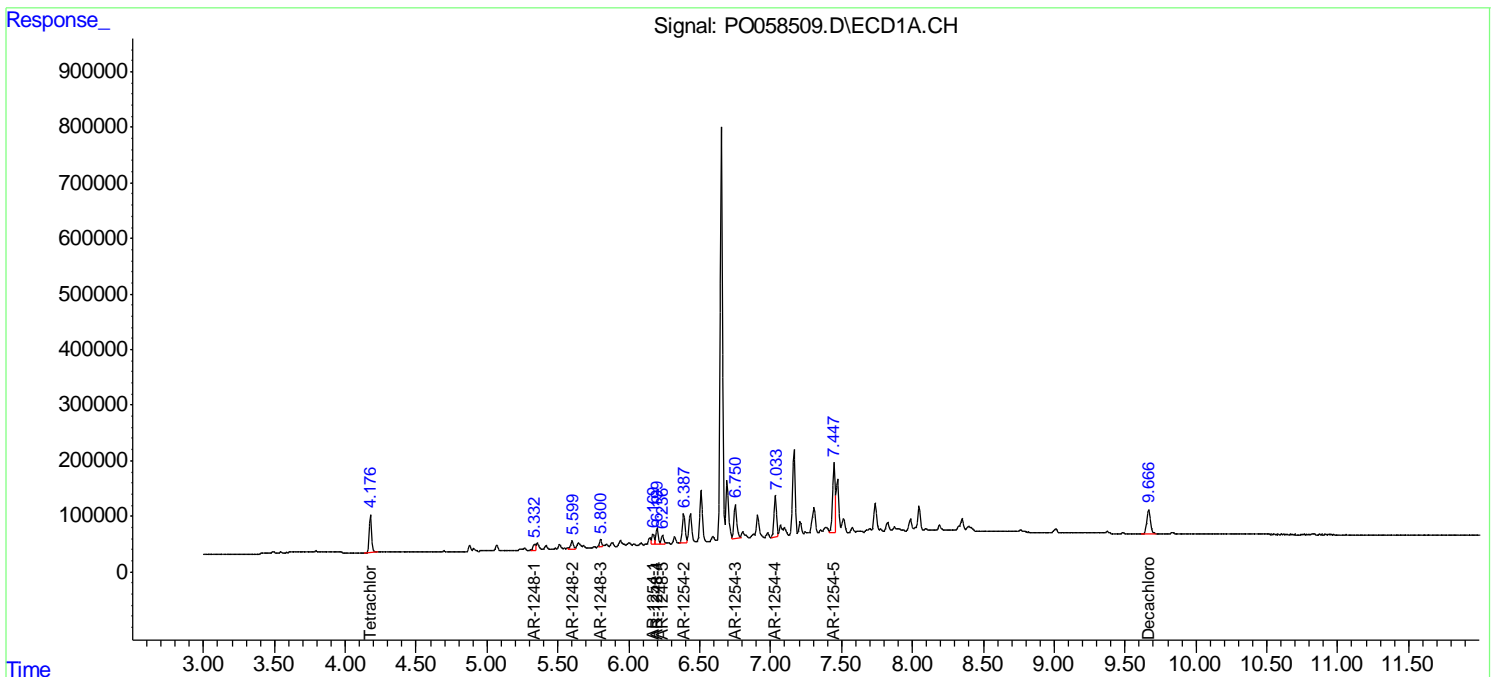
Instrument :
 ECD_O
 Client Sampled :
 S9-04-S-01

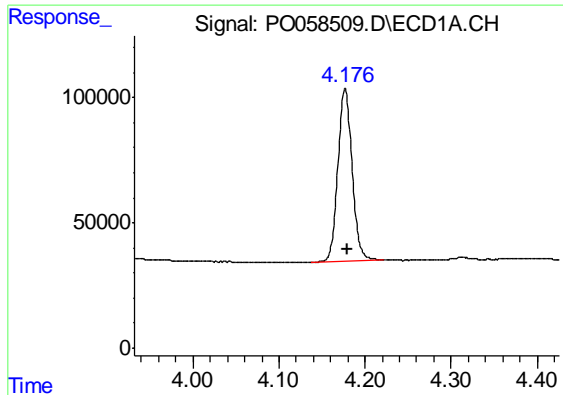
Manual Integrations
 APPROVED

Ankita
 7/29/2019 3:40:55 PM

Integration File signal 1: autoint1.e
 Integration File signal 2: autoint2.e
 Quant Time: Jul 28 03:32:20 2019
 Quant Method : Z:\pestpcbsrv\HPCHEM1\ECD_O\methods\PO072819.M
 Quant Title : GC EXTRACTABLES
 QLast Update : Sat Jul 27 06:49:05 2019
 Response via : Initial Calibration
 Integrator: ChemStation 6890 Scale Mode: Small noise peaks clipped

Volume Inj. : 2 µl
 Signal #1 Phase : ZB-MR1 Signal #2 Phase: ZB-MR2
 Signal #1 Info : 30Mx0.32mmx 0.50µ Signal #2 Info : 30M x 0.32mm x 0.25µm





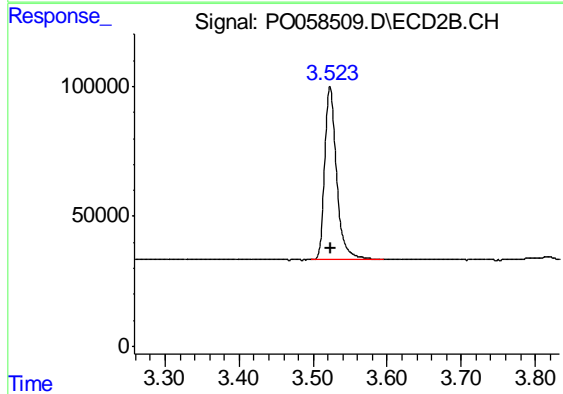
#1 Tetrachloro-m-xylene

R.T.: 4.177 min
 Delta R.T.: -0.002 min
 Response: 790781
 Conc: 18.74 ng/ml

Instrument :
 ECD_O
 ClientSampled :
 S9-04-S-01

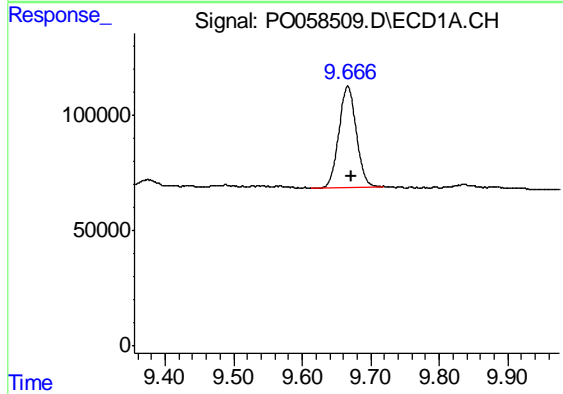
Manual Integrations
 APPROVED

Ankita
 7/29/2019 3:40:55 PM



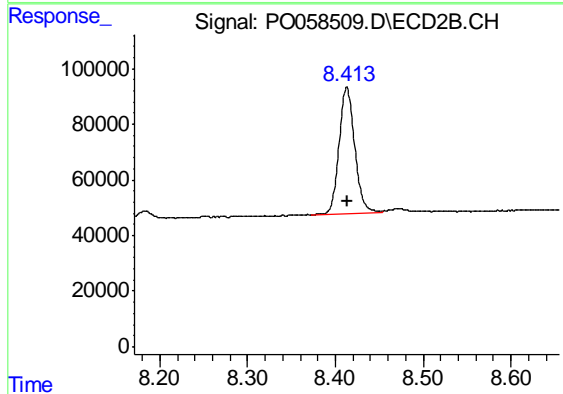
#1 Tetrachloro-m-xylene

R.T.: 3.523 min
 Delta R.T.: -0.002 min
 Response: 735039
 Conc: 18.40 ng/ml



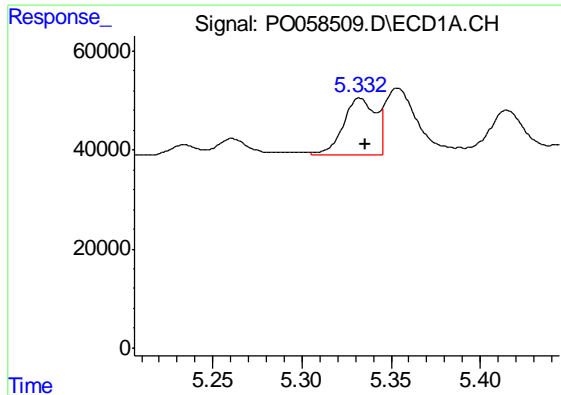
#2 Decachlorobiphenyl

R.T.: 9.666 min
 Delta R.T.: -0.006 min
 Response: 770072
 Conc: 14.22 ng/ml



#2 Decachlorobiphenyl

R.T.: 8.413 min
 Delta R.T.: 0.000 min
 Response: 562515
 Conc: 14.25 ng/ml



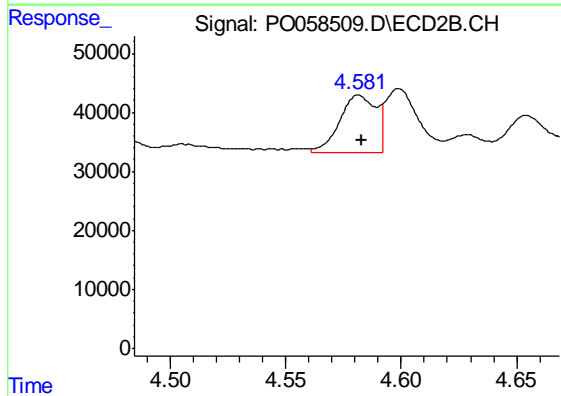
#21 AR-1248-1

R.T.: 5.332 min
 Delta R.T.: -0.004 min
 Response: 146426
 Conc: 144.83 ng/ml m

Instrument :
 ECD_O
 ClientSampled :
 S9-04-S-01

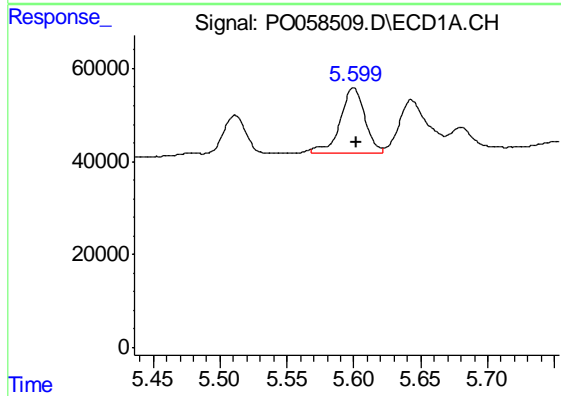
Manual Integrations
 APPROVED

Ankita
 7/29/2019 3:40:55 PM



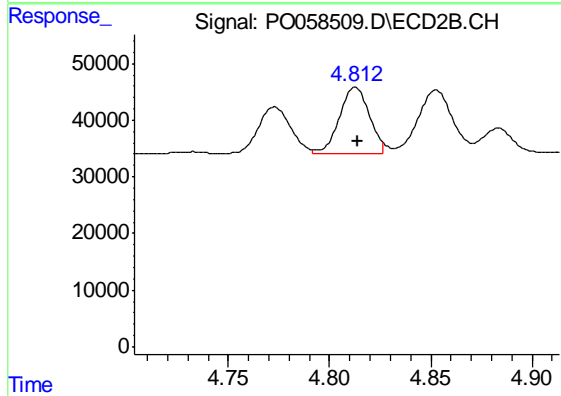
#21 AR-1248-1

R.T.: 4.581 min
 Delta R.T.: -0.001 min
 Response: 111183
 Conc: 139.04 ng/ml m



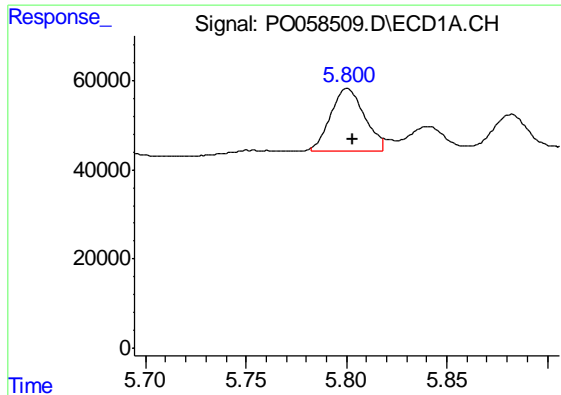
#22 AR-1248-2

R.T.: 5.599 min
 Delta R.T.: -0.003 min
 Response: 184567
 Conc: 127.68 ng/ml m



#22 AR-1248-2

R.T.: 4.812 min
 Delta R.T.: -0.001 min
 Response: 120920
 Conc: 109.13 ng/ml m



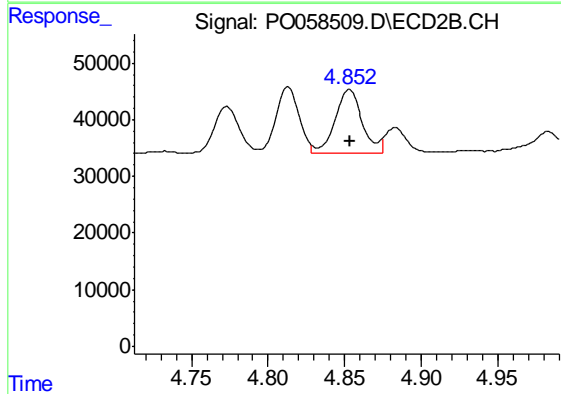
#23 AR-1248-3

R.T.: 5.800 min
 Delta R.T.: -0.003 min
 Response: 165689
 Conc: 100.87 ng/ml m

Instrument :
 ECD_O
 ClientSampled :
 S9-04-S-01

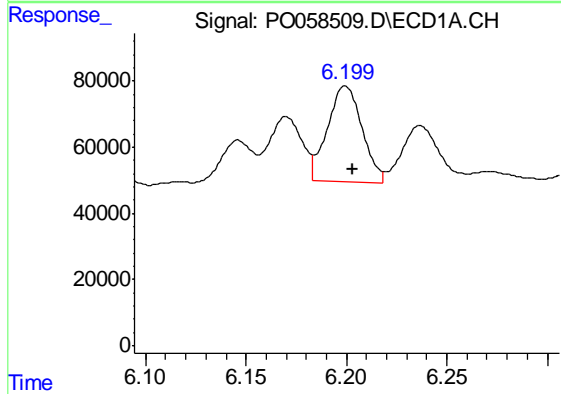
Manual Integrations
 APPROVED

Ankita
 7/29/2019 3:40:55 PM



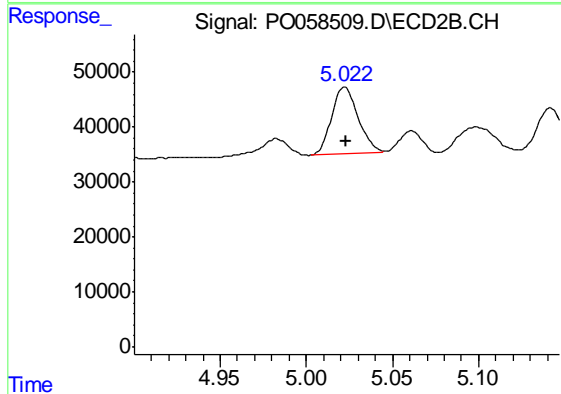
#23 AR-1248-3

R.T.: 4.852 min
 Delta R.T.: -0.001 min
 Response: 141007
 Conc: 123.89 ng/ml m



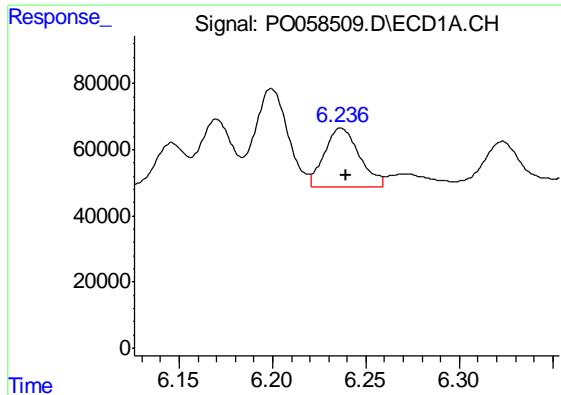
#24 AR-1248-4

R.T.: 6.199 min
 Delta R.T.: -0.004 min
 Response: 340455
 Conc: 168.11 ng/ml m



#24 AR-1248-4

R.T.: 5.022 min
 Delta R.T.: -0.001 min
 Response: 128679
 Conc: 92.11 ng/ml m



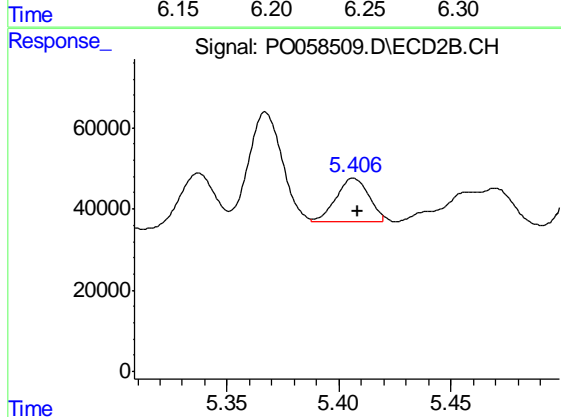
#25 AR-1248-5

R.T.: 6.236 min
 Delta R.T.: -0.003 min
 Response: 229489
 Conc: 118.89 ng/ml m

Instrument :
 ECD_O
 ClientSampled :
 S9-04-S-01

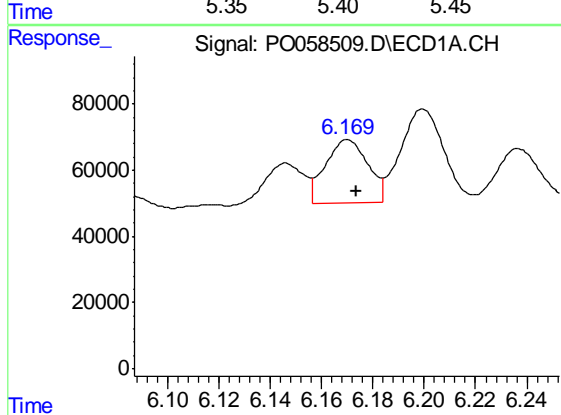
Manual Integrations
 APPROVED

Ankita
 7/29/2019 3:40:55 PM



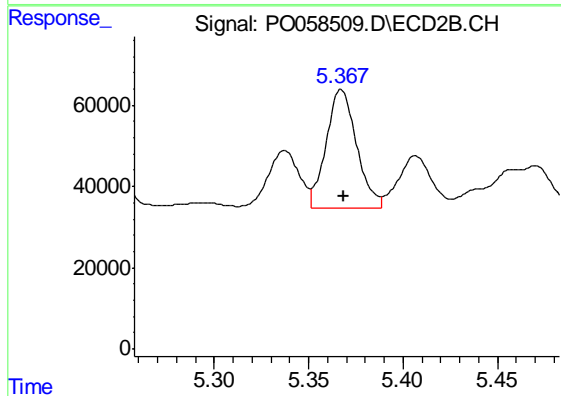
#25 AR-1248-5

R.T.: 5.406 min
 Delta R.T.: -0.002 min
 Response: 109685
 Conc: 79.18 ng/ml m



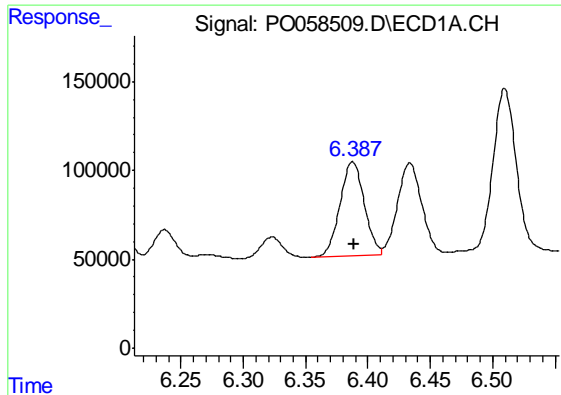
#26 AR-1254-1

R.T.: 6.170 min
 Delta R.T.: -0.003 min
 Response: 220516
 Conc: 93.39 ng/ml



#26 AR-1254-1

R.T.: 5.367 min
 Delta R.T.: -0.001 min
 Response: 327756
 Conc: 126.52 ng/ml



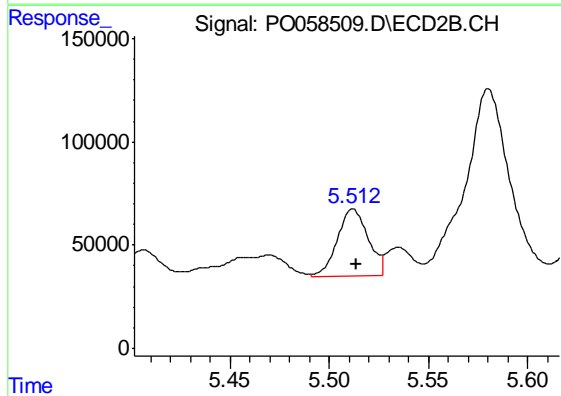
#27 AR-1254-2

R.T.: 6.388 min
Delta R.T.: -0.001 min
Response: 718337
Conc: 186.39 ng/ml

Instrument :
ECD_O
ClientSampled :
S9-04-S-01

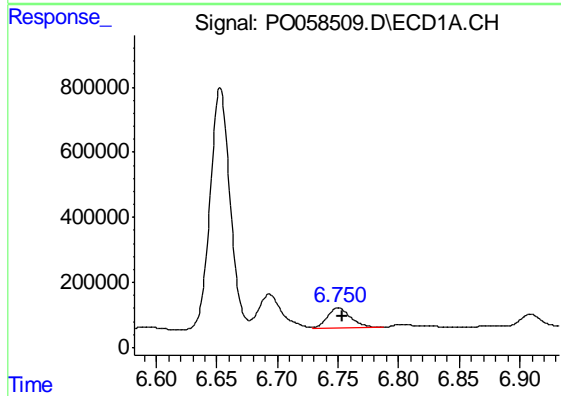
Manual Integrations
APPROVED

Ankita
7/29/2019 3:40:55 PM



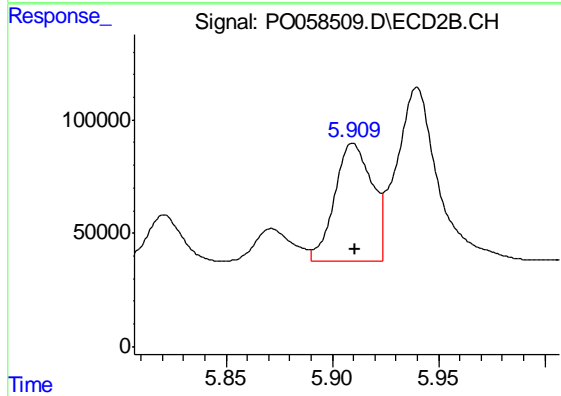
#27 AR-1254-2

R.T.: 5.512 min
Delta R.T.: -0.002 min
Response: 352022
Conc: 153.76 ng/ml



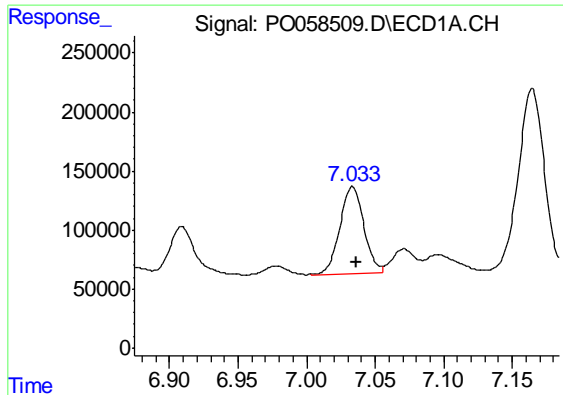
#28 AR-1254-3

R.T.: 6.750 min
Delta R.T.: -0.003 min
Response: 813931
Conc: 200.99 ng/ml



#28 AR-1254-3

R.T.: 5.910 min
Delta R.T.: -0.001 min
Response: 633551
Conc: 172.19 ng/ml

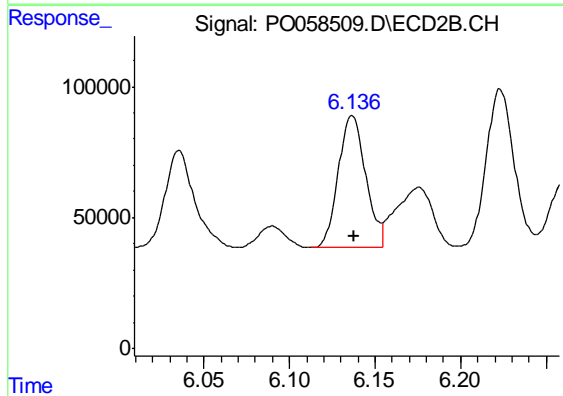


#29 AR-1254-4

R.T.: 7.034 min
 Delta R.T.: -0.003 min
 Response: 897827
 Conc: 249.35 ng/ml

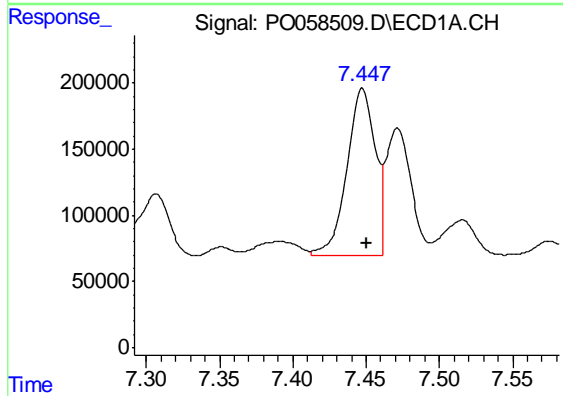
Instrument :
 ECD_O
ClientSampled :
 S9-04-S-01

Manual Integrations
APPROVED
 Ankita
 7/29/2019 3:40:55 PM



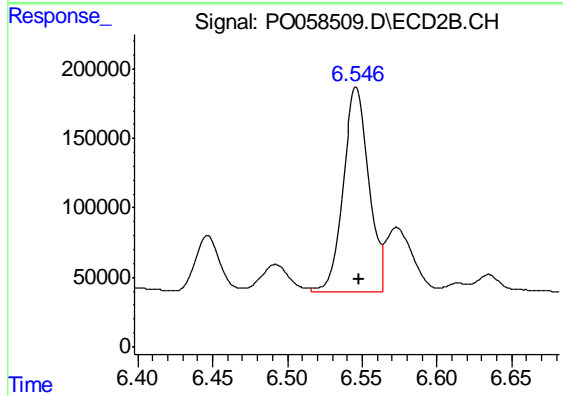
#29 AR-1254-4

R.T.: 6.137 min
 Delta R.T.: -0.001 min
 Response: 560231
 Conc: 240.94 ng/ml



#30 AR-1254-5

R.T.: 7.447 min
 Delta R.T.: -0.003 min
 Response: 1686779
 Conc: 465.35 ng/ml



#30 AR-1254-5

R.T.: 6.546 min
 Delta R.T.: -0.002 min
 Response: 1756025
 Conc: 509.06 ng/ml