

Data Path : Z:\pestpcbsrv\HPCHEM1\ECD\_0\Data\P0072919\  
 Data File : P0058522.D  
 Signal(s) : Signal #1: ECD1A.CH Signal #2: ECD2B.CH  
 Acq On : 27 Jul 2019 22:43  
 Operator : SM/AJ  
 Sample : PB121765BL  
 Misc :  
 ALS Vial : 24 Sample Multiplier: 1

Instrument :  
 ECD\_0  
 ClientSampleId :  
 PB121765BL

Integration File signal 1: autoint1.e  
 Integration File signal 2: autoint2.e  
 Quant Time: Jul 28 03:37:39 2019  
 Quant Method : Z:\pestpcbsrv\HPCHEM1\ECD\_0\methods\P0072819.M  
 Quant Title : GC EXTRACTABLES  
 QLast Update : Sat Jul 27 06:49:05 2019  
 Response via : Initial Calibration  
 Integrator: ChemStation 6890 Scale Mode: Small noise peaks clipped

Volume Inj. : 2 µl  
 Signal #1 Phase : ZB-MR1 Signal #2 Phase: ZB-MR2  
 Signal #1 Info : 30Mx0.32mmx 0.50µ Signal #2 Info : 30M x 0.32mm x 0.25µm

Compound	RT#1	RT#2	Resp#1	Resp#2	ng/ml	ng/ml
----------	------	------	--------	--------	-------	-------

-----  
 System Monitoring Compounds

1) SA Tetrachlo...	4.177	3.523	944706	837719	22.385	20.969
2) SA Decachlor...	9.664	8.411	1217997	897909	22.491	22.747

Target Compounds  
 -----

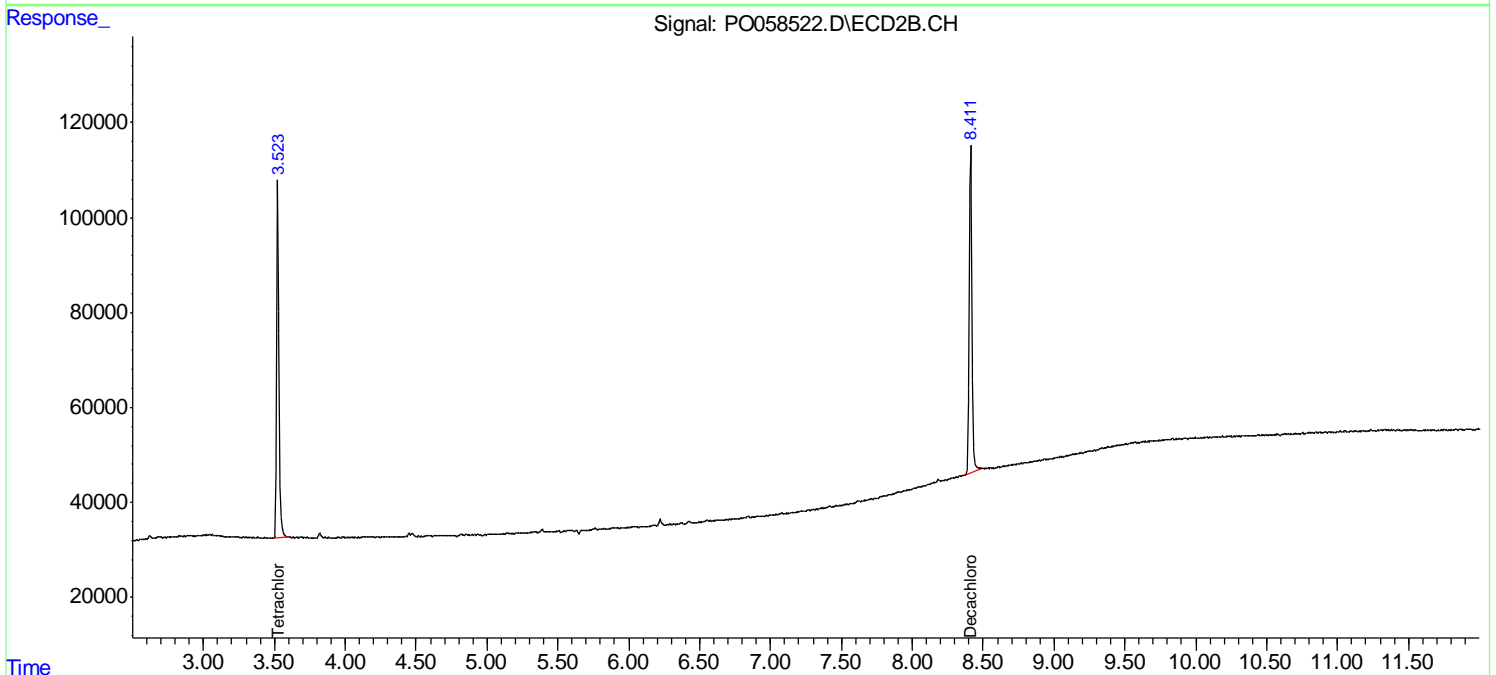
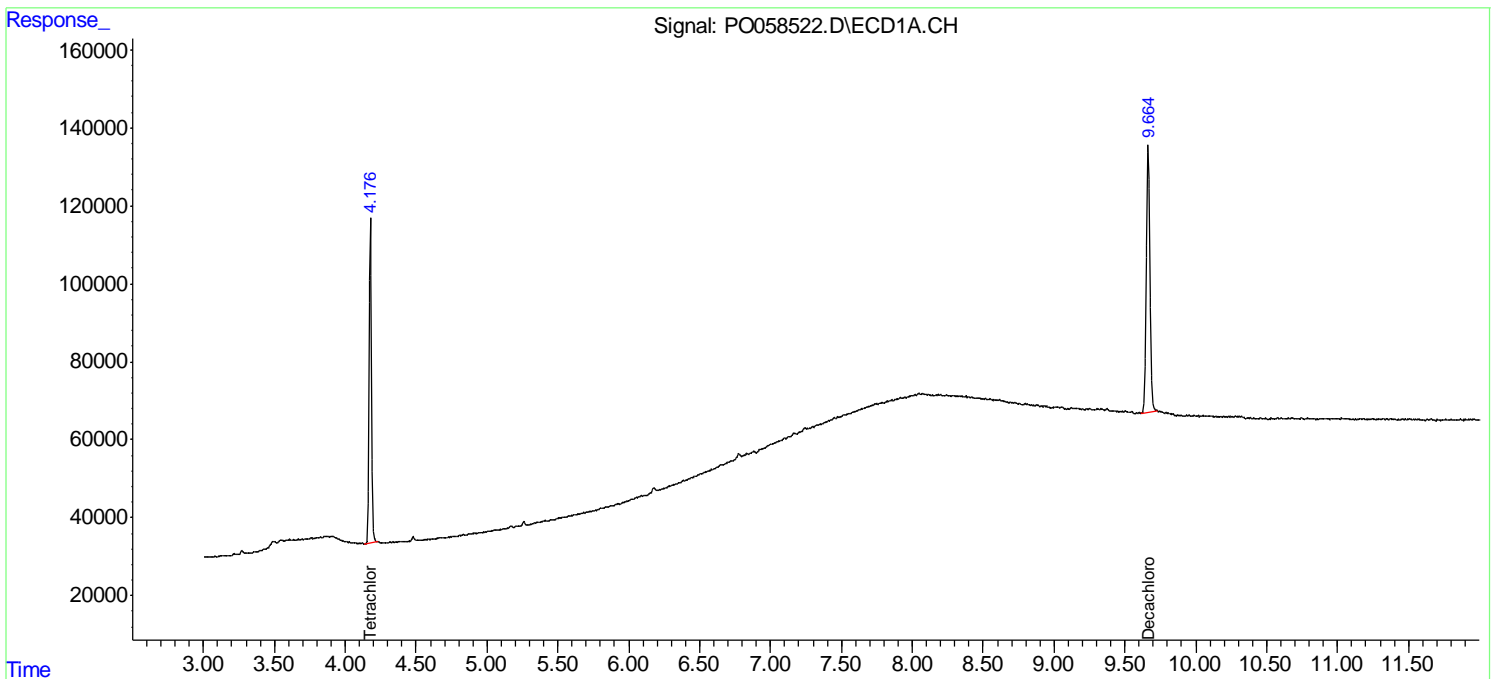
(f)=RT Delta > 1/2 Window (#)=Amounts differ by > 25% (m)=manual int.

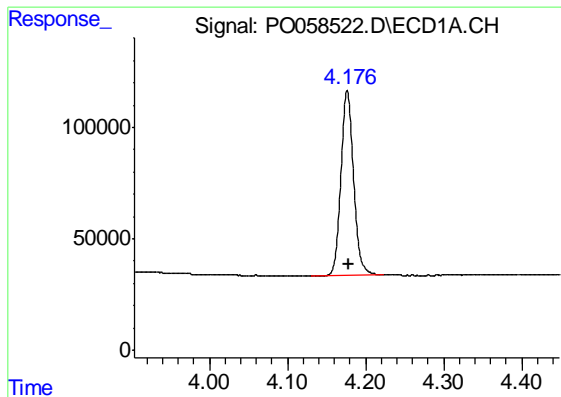
Data Path : Z:\pestpcbsrv\HPCHEM1\ECD\_O\Data\P0072919\  
 Data File : P0058522.D  
 Signal(s) : Signal #1: ECD1A.CH Signal #2: ECD2B.CH  
 Acq On : 27 Jul 2019 22:43  
 Operator : SM/AJ  
 Sample : PB121765BL  
 Misc :  
 ALS Vial : 24 Sample Multiplier: 1

Instrument :  
 ECD\_O  
 ClientSampleId :  
 PB121765BL

Integration File signal 1: autoint1.e  
 Integration File signal 2: autoint2.e  
 Quant Time: Jul 28 03:37:39 2019  
 Quant Method : Z:\pestpcbsrv\HPCHEM1\ECD\_O\methods\P0072819.M  
 Quant Title : GC EXTRACTABLES  
 QLast Update : Sat Jul 27 06:49:05 2019  
 Response via : Initial Calibration  
 Integrator: ChemStation 6890 Scale Mode: Small noise peaks clipped

Volume Inj. : 2 µl  
 Signal #1 Phase : ZB-MR1 Signal #2 Phase: ZB-MR2  
 Signal #1 Info : 30Mx0.32mmx 0.50µ Signal #2 Info : 30M x 0.32mm x 0.25µm

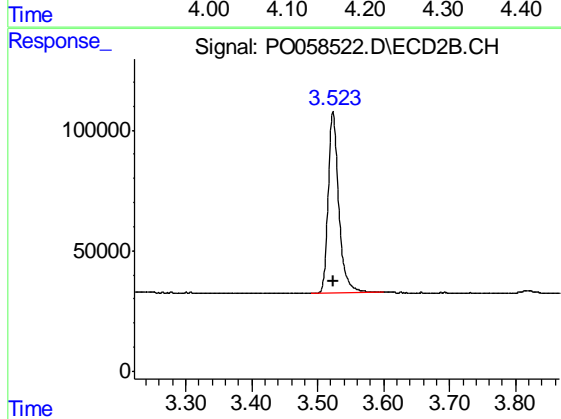




#1 Tetrachloro-m-xylene

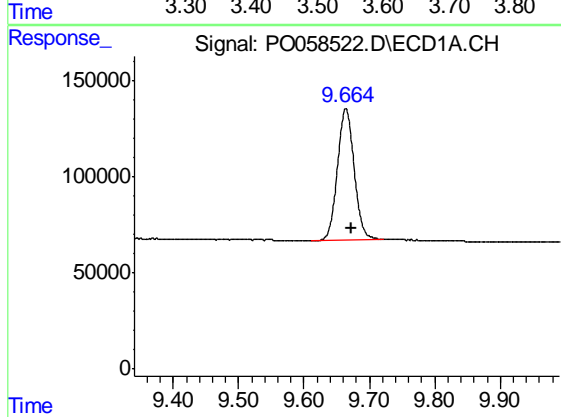
R.T.: 4.177 min  
 Delta R.T.: -0.002 min  
 Response: 944706  
 Conc: 22.38 ng/ml

Instrument :  
 ECD\_O  
 ClientSampleId :  
 PB121765BL



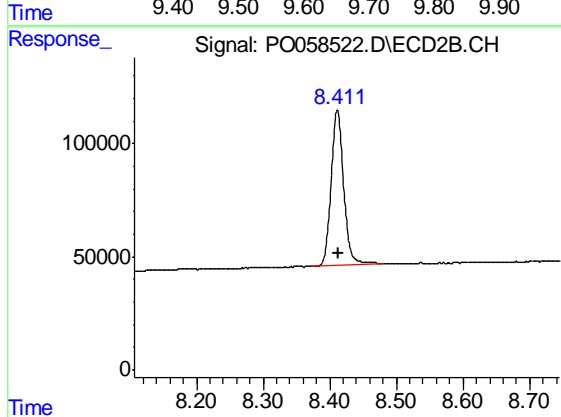
#1 Tetrachloro-m-xylene

R.T.: 3.523 min  
 Delta R.T.: -0.001 min  
 Response: 837719  
 Conc: 20.97 ng/ml



#2 Decachlorobiphenyl

R.T.: 9.664 min  
 Delta R.T.: -0.009 min  
 Response: 1217997  
 Conc: 22.49 ng/ml



#2 Decachlorobiphenyl

R.T.: 8.411 min  
 Delta R.T.: -0.003 min  
 Response: 897909  
 Conc: 22.75 ng/ml