

Data Path : Z:\pestpcbsrv\HPCHEM1\ECD_0\Data\P0072921\
 Data File : P0079941.D
 Signal(s) : Signal #1: ECD1A.CH Signal #2: ECD2B.CH
 Acq On : 29 Jul 2021 14:22
 Operator : DD\AJ
 Sample : M3210-01
 Misc :
 ALS Vial : 16 Sample Multiplier: 1

Instrument :
 ECD_0
 ClientSampleId :
 SB-1(1.0-1.5)

Integration File signal 1: autoint1.e
 Integration File signal 2: autoint2.e
 Quant Time: Jul 30 02:54:43 2021
 Quant Method : Z:\pestpcbsrv\HPCHEM1\ECD_0\methods\P0072821.M
 Quant Title : GC EXTRACTABLES
 QLast Update : Wed Jul 28 18:45:36 2021
 Response via : Initial Calibration
 Integrator: ChemStation 6890 Scale Mode: Small noise peaks clipped

Volume Inj. : 2 µl
 Signal #1 Phase : ZB-MR1 Signal #2 Phase: ZB-MR2
 Signal #1 Info : 30Mx0.32mmx 0.50µ Signal #2 Info : 30M x 0.32mm x 0.25µm

Compound	RT#1	RT#2	Resp#1	Resp#2	ng/ml	ng/ml

System Monitoring Compounds						
1) SA Tetrachlo...	4.999	4.118	1438135	557850	23.866	24.359
2) SA Decachlor...	11.111	9.527	1069378	479261	22.796	23.062

Target Compounds

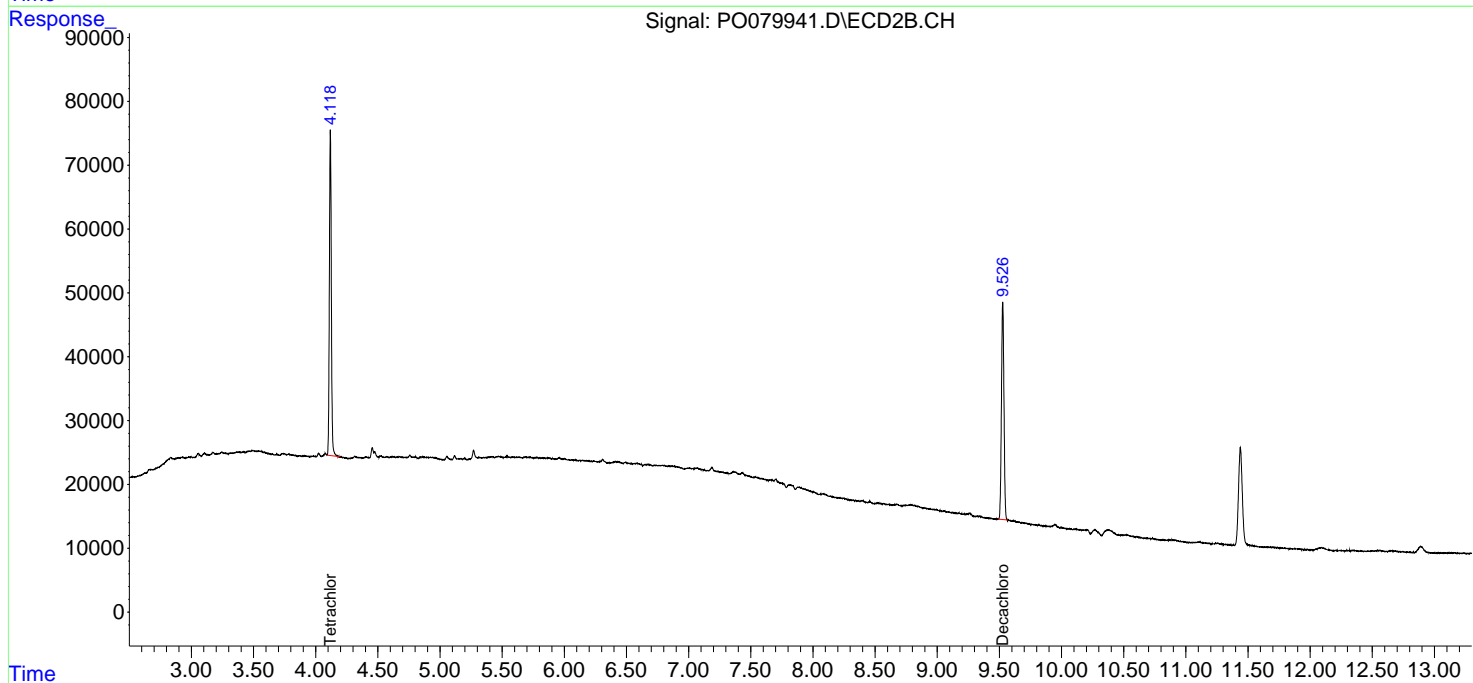
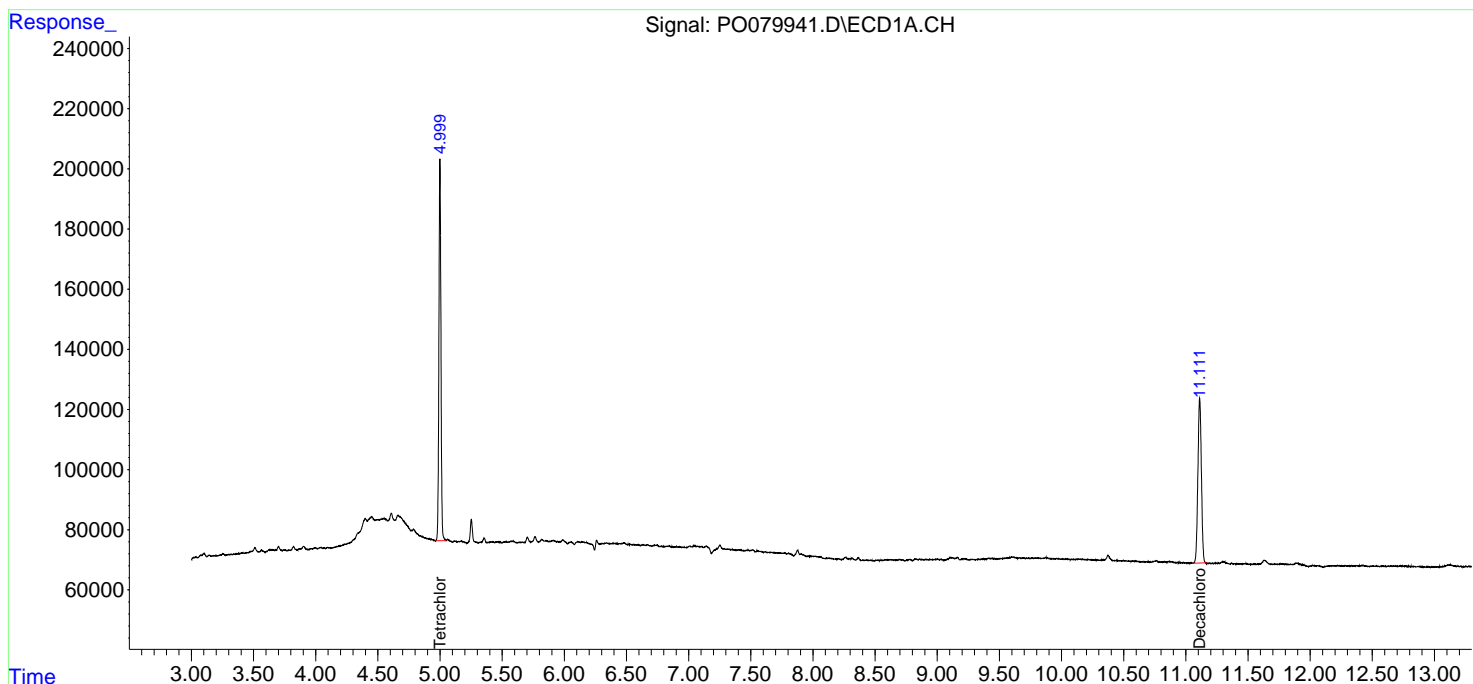
(f)=RT Delta > 1/2 Window (#)=Amounts differ by > 25% (m)=manual int.

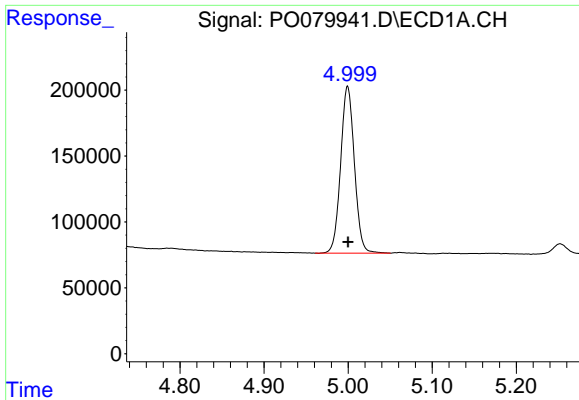
Data Path : Z:\pestpcbsrv\HPCHEM1\ECD_0\Data\P0072921\
 Data File : P0079941.D
 Signal(s) : Signal #1: ECD1A.CH Signal #2: ECD2B.CH
 Acq On : 29 Jul 2021 14:22
 Operator : DD\AJ
 Sample : M3210-01
 Misc :
 ALS Vial : 16 Sample Multiplier: 1

Instrument :
 ECD_O
 ClientSampleId :
 SB-1(1.0-1.5)

Integration File signal 1: autoint1.e
 Integration File signal 2: autoint2.e
 Quant Time: Jul 30 02:54:43 2021
 Quant Method : Z:\pestpcbsrv\HPCHEM1\ECD_0\methods\P0072821.M
 Quant Title : GC EXTRACTABLES
 QLast Update : Wed Jul 28 18:45:36 2021
 Response via : Initial Calibration
 Integrator: ChemStation 6890 Scale Mode: Small noise peaks clipped

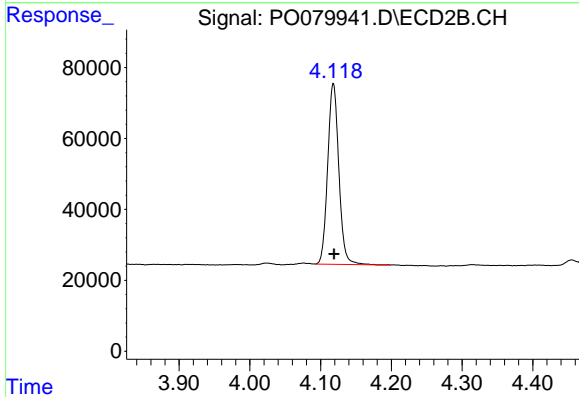
Volume Inj. : 2 µl
 Signal #1 Phase : ZB-MR1 Signal #2 Phase: ZB-MR2
 Signal #1 Info : 30Mx0.32mmx 0.50µ Signal #2 Info : 30M x 0.32mm x 0.25µm



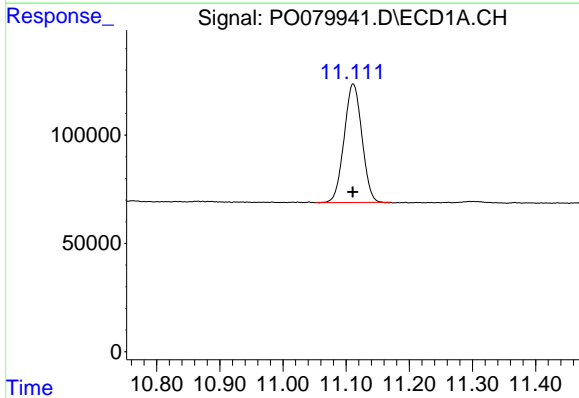


#1 Tetrachloro-m-xylene
 R.T.: 4.999 min
 Delta R.T.: 0.000 min
 Response: 1438135
 Conc: 23.87 ng/ml

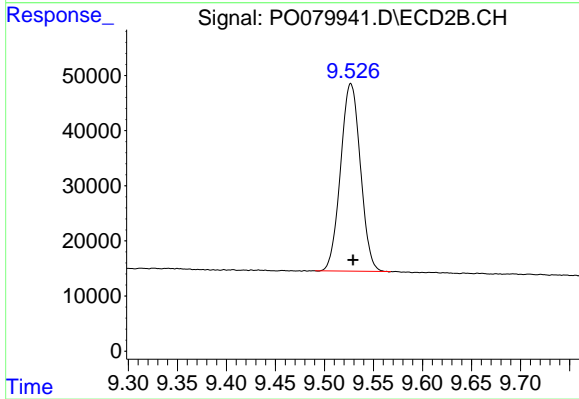
Instrument :
 ECD_O
 ClientSampleId :
 SB-1(1.0-1.5)



#1 Tetrachloro-m-xylene
 R.T.: 4.118 min
 Delta R.T.: -0.001 min
 Response: 557850
 Conc: 24.36 ng/ml



#2 Decachlorobiphenyl
 R.T.: 11.111 min
 Delta R.T.: 0.000 min
 Response: 1069378
 Conc: 22.80 ng/ml



#2 Decachlorobiphenyl
 R.T.: 9.527 min
 Delta R.T.: -0.002 min
 Response: 479261
 Conc: 23.06 ng/ml