

Data Path : Z:\pestpcbsrv\HPCHEM1\ECD_O\Data\P0072924\
 Data File : PO105037.D
 Signal(s) : Signal #1: ECD1A.ch Signal #2: ECD2B.ch
 Acq On : 30 Jul 2024 10:30
 Operator : YP/AJ
 Sample : P0072924ICV500
 Misc :
 ALS Vial : 31 Sample Multiplier: 1

Instrument :
 ECD_O
 ClientSampleId :

Integration File signal 1: autoint1.e
 Integration File signal 2: autoint2.e
 Quant Time: Jul 30 13:55:49 2024
 Quant Method : Z:\pestpcbsrv\HPCHEM1\ECD_O\methods\P0072924.M
 Quant Title : GC EXTRACTABLES
 QLast Update : Tue Jul 30 07:11:20 2024
 Response via : Initial Calibration
 Integrator: ChemStation

Volume Inj. : 2 µl
 Signal #1 Phase : ZB-MR1 Signal #2 Phase: ZB-MR2
 Signal #1 Info : 30Mx0.32mmx 0.50µ Signal #2 Info : 30M x 0.32mm x 0.25µm

Compound	RT#1	RT#2	Resp#1	Resp#2	ng/ml	ng/ml
System Monitoring Compounds						
1) SA Tetrachlo...	4.427	3.538	383.9E6	139.1E6	55.759	54.595
2) SA Decachlor...	10.220	8.432	274.5E6	85778591	53.471	53.999
Target Compounds						
3) L1 AR-1016-1	5.598	4.594	130.9E6	50136986	550.131	539.256
4) L1 AR-1016-2	5.621	4.612	184.6E6	70267653	549.102	545.985
5) L1 AR-1016-3	5.684	4.784	113.4E6	37151739	548.226	548.653
6) L1 AR-1016-4	5.783	4.826	97777089	29168756	538.558	542.378
7) L1 AR-1016-5	6.080	5.034	91885675	39799741	564.572	560.833
8) L2 AR-1221-1	4.630	3.745	13347899	4816415	145.458	147.540
9) L2 AR-1221-2	4.721	3.829	21417550	7365723	298.813	292.403
10) L2 AR-1221-3	4.797	3.903	69314677	26327071	344.296	349.787
11) L3 AR-1232-1	4.797	3.903	69314677	26327071	422.139	426.658
12) L3 AR-1232-2	5.329	4.612	103.3E6	70267653	1249.618	1154.369
13) L3 AR-1232-3	5.621	4.784	184.6E6	37151739	1174.790	1167.315
14) L3 AR-1232-4	5.783	4.866	97777089	36951149	1134.164	1286.670
15) L3 AR-1232-5	5.874	5.034	81136302	39799741	1416.720	1278.318
16) L4 AR-1242-1	5.598	4.594	130.9E6	50136986	670.593	654.882
17) L4 AR-1242-2	5.621	4.612	184.6E6	70267653	674.430	669.732
18) L4 AR-1242-3	5.684	4.784	113.4E6	37151739	671.997	669.388
19) L4 AR-1242-4	5.783	4.866	97777089	36951149	649.145	660.304
20) L4 AR-1242-5	6.525	5.380	25918569	33859434	155.335	477.448 #
21) L5 AR-1248-1	5.598	4.594	130.9E6	50136986	844.441	818.125
22) L5 AR-1248-2	5.874	4.826	81136302	29168756	367.813	350.917
23) L5 AR-1248-3	6.080	4.866	91885675	36951149	374.247	424.010
24) L5 AR-1248-4	6.485	5.034	25470552	39799741	84.199	385.657 #
25) L5 AR-1248-5	6.525	5.419	25918569	6897316	91.193	67.084 #
26) L6 AR-1254-1	6.460	5.380	85379595	33859434	294.993	225.655
27) L6 AR-1254-2	6.678	5.525	72945327	29492397	175.666	220.329 #
28) L6 AR-1254-3	7.048	5.936	34850313	51941078	83.477	244.462 #
29) L6 AR-1254-4	7.337	6.146	23213598	5582313	74.274	42.031 #
30) L6 AR-1254-5	7.758	6.557	261.9E6	98585890	715.893	531.109 #
31) L7 AR-1260-1	7.215	6.050	165.8E6	73716307	522.259	541.247
32) L7 AR-1260-2	7.473	6.235	196.0E6	88060705	539.079	523.357
33) L7 AR-1260-3	7.835	6.386	133.7E6	83674140	521.322	496.123
34) L7 AR-1260-4	8.063	6.851	161.1E6	59230784	565.141	540.868
35) L7 AR-1260-5	8.386	7.091	295.6E6	138.2E6	528.929	540.649
36) L8 AR-1262-1	7.758	6.557	261.9E6	98585890	899.830	975.090
37) L8 AR-1262-2	8.386	6.851	295.6E6	59230784	402.511	358.363
38) L8 AR-1262-3	8.716	7.371	190.9E6	30653565	401.338	243.866 #
39) L8 AR-1262-4	8.772	7.434	106.4E6	100.7E6	307.331	438.685 #
40) L8 AR-1262-5	9.456	7.923	65575131	28676711	265.096	291.804
41) L9 AR-1268-1	8.716	7.371	190.9E6	30653565	242.058	87.128 #

Data Path : Z:\pestpcbsrv\HPCHEM1\ECD_0\Data\P0072924\
 Data File : P0105037.D
 Signal(s) : Signal #1: ECD1A.ch Signal #2: ECD2B.ch
 Acq On : 30 Jul 2024 10:30
 Operator : YP/AJ
 Sample : P0072924ICV500
 Misc :
 ALS Vial : 31 Sample Multiplier: 1

Instrument :
 ECD_0
 ClientSampleId :

Integration File signal 1: autoint1.e
 Integration File signal 2: autoint2.e
 Quant Time: Jul 30 13:55:49 2024
 Quant Method : Z:\pestpcbsrv\HPCHEM1\ECD_0\methods\P0072924.M
 Quant Title : GC EXTRACTABLES
 QLast Update : Tue Jul 30 07:11:20 2024
 Response via : Initial Calibration
 Integrator: ChemStation

Volume Inj. : 2 µl
 Signal #1 Phase : ZB-MR1 Signal #2 Phase: ZB-MR2
 Signal #1 Info : 30Mx0.32mmx 0.50µ Signal #2 Info : 30M x 0.32mm x 0.25µm

	Compound	RT#1	RT#2	Resp#1	Resp#2	ng/ml	ng/ml
42)	L9 AR-1268-2	8.772	7.434	106.4E6	100.7E6	153.412	324.600 #
43)	L9 AR-1268-3	9.025	7.638	5355908	3644994	8.973	14.513 #
44)	L9 AR-1268-4	9.456	7.923	65575131	28676711	259.904	275.456
45)	L9 AR-1268-5	9.876	8.196	24176363	8291952	12.332	12.377

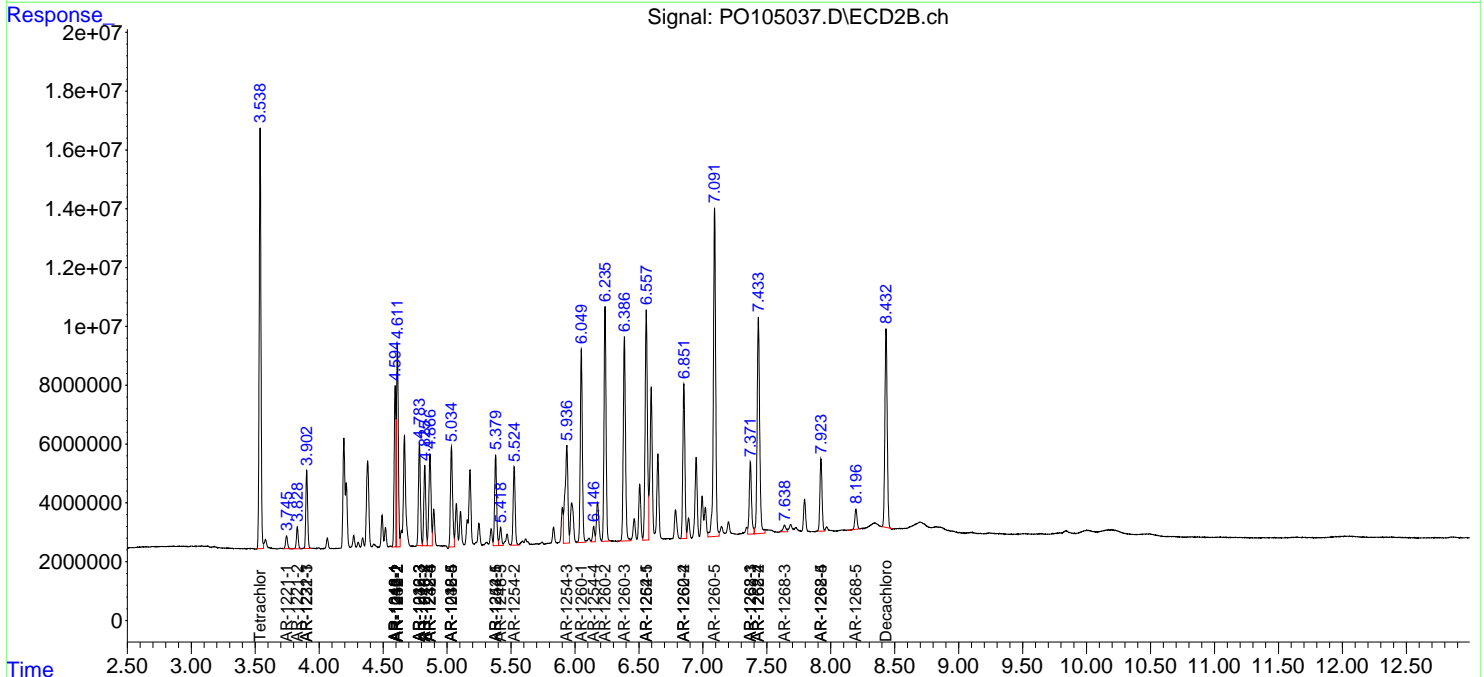
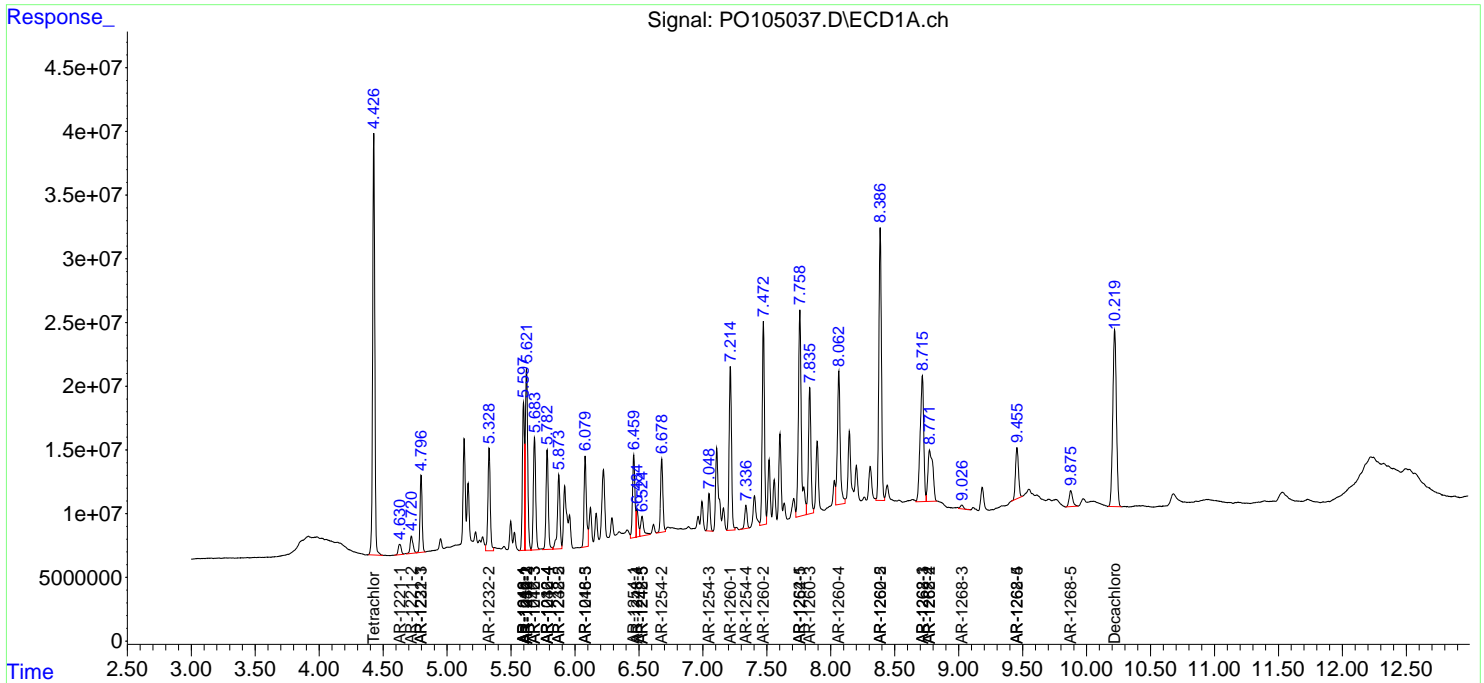
(f)=RT Delta > 1/2 Window (#)=Amounts differ by > 25% (m)=manual int.

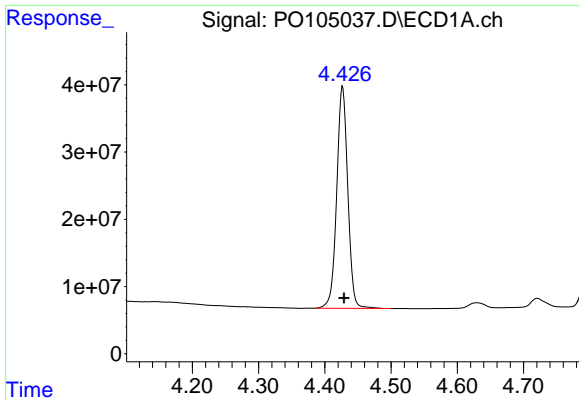
Data Path : Z:\pestpcbsrv\HPCHEM1\ECD_O\Data\PO072924\
 Data File : PO105037.D
 Signal(s) : Signal #1: ECD1A.ch Signal #2: ECD2B.ch
 Acq On : 30 Jul 2024 10:30
 Operator : YP/AJ
 Sample : PO072924ICV500
 Misc :
 ALS Vial : 31 Sample Multiplier: 1

Instrument :
 ECD_O
 ClientSampleId :

Integration File signal 1: autoint1.e
 Integration File signal 2: autoint2.e
 Quant Time: Jul 30 13:55:49 2024
 Quant Method : Z:\pestpcbsrv\HPCHEM1\ECD_O\methods\PO072924.M
 Quant Title : GC EXTRACTABLES
 QLast Update : Tue Jul 30 07:11:20 2024
 Response via : Initial Calibration
 Integrator: ChemStation

Volume Inj. : 2 µl
 Signal #1 Phase : ZB-MR1 Signal #2 Phase: ZB-MR2
 Signal #1 Info : 30Mx0.32mmx 0.50µ Signal #2 Info : 30M x 0.32mm x 0.25µm

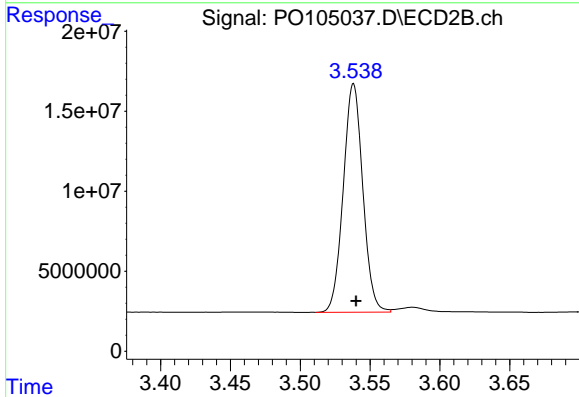




#1 Tetrachloro-m-xylene

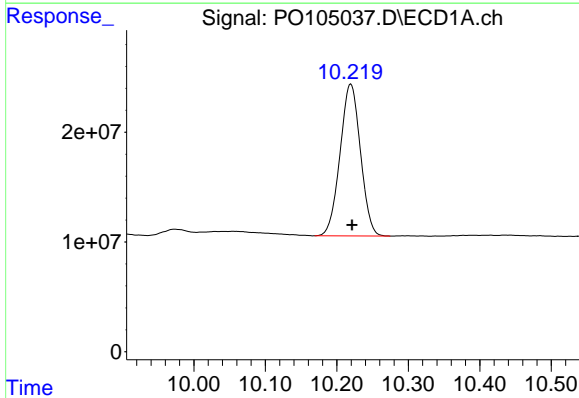
R.T.: 4.427 min
 Delta R.T.: -0.002 min
 Response: 383860354
 Conc: 55.76 ng/ml

Instrument :
 ECD_O
 ClientSampleId :



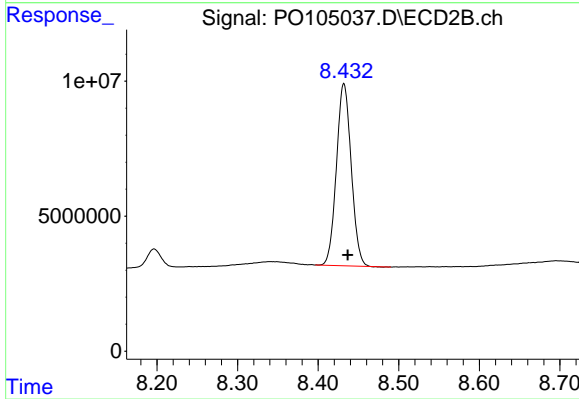
#1 Tetrachloro-m-xylene

R.T.: 3.538 min
 Delta R.T.: -0.002 min
 Response: 139112199
 Conc: 54.59 ng/ml



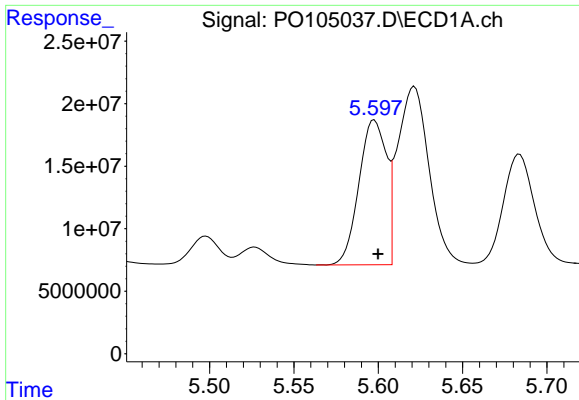
#2 Decachlorobiphenyl

R.T.: 10.220 min
 Delta R.T.: -0.002 min
 Response: 274520070
 Conc: 53.47 ng/ml



#2 Decachlorobiphenyl

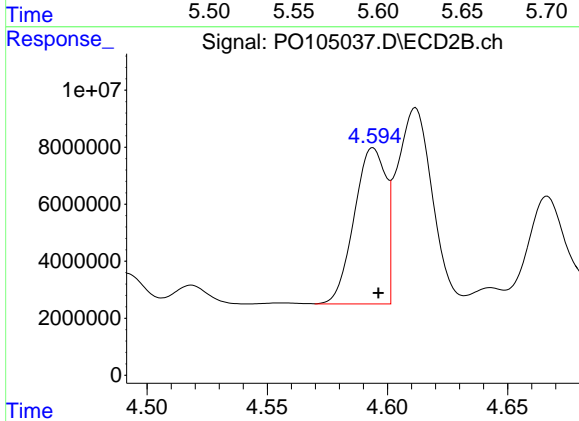
R.T.: 8.432 min
 Delta R.T.: -0.005 min
 Response: 85778591
 Conc: 54.00 ng/ml



#3 AR-1016-1

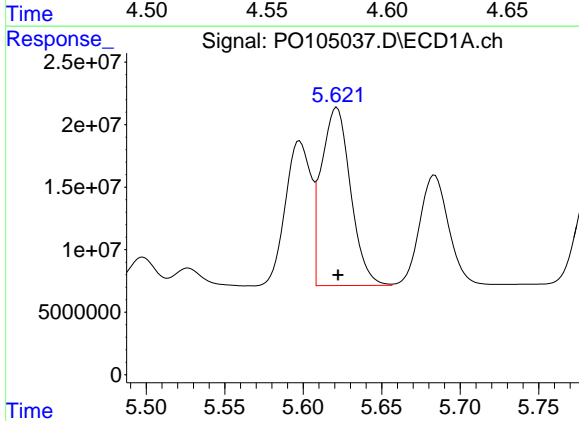
R.T.: 5.598 min
 Delta R.T.: -0.002 min
 Response: 130912443
 Conc: 550.13 ng/ml

Instrument :
 ECD_O
 ClientSampleId :



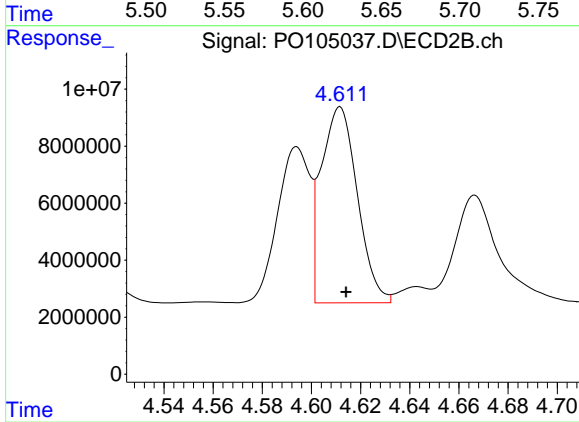
#3 AR-1016-1

R.T.: 4.594 min
 Delta R.T.: -0.002 min
 Response: 50136986
 Conc: 539.26 ng/ml



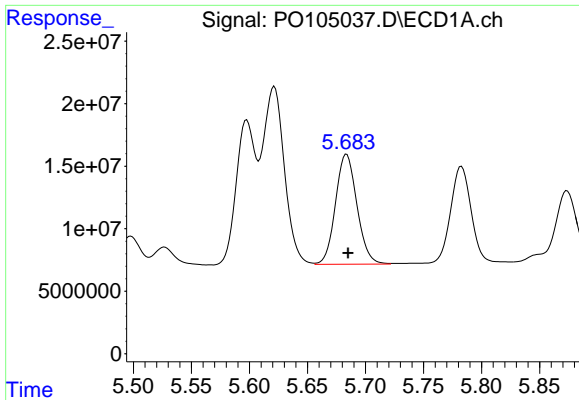
#4 AR-1016-2

R.T.: 5.621 min
 Delta R.T.: 0.000 min
 Response: 184601472
 Conc: 549.10 ng/ml



#4 AR-1016-2

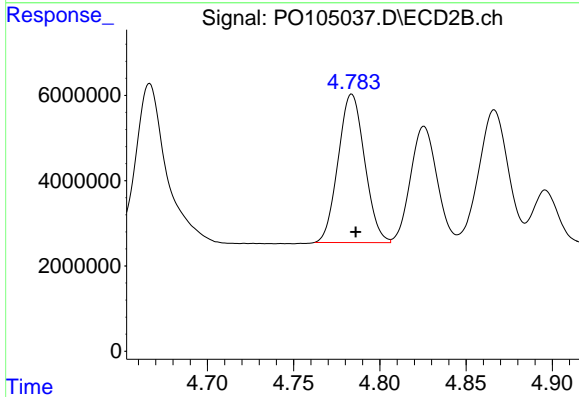
R.T.: 4.612 min
 Delta R.T.: -0.002 min
 Response: 70267653
 Conc: 545.99 ng/ml



#5 AR-1016-3

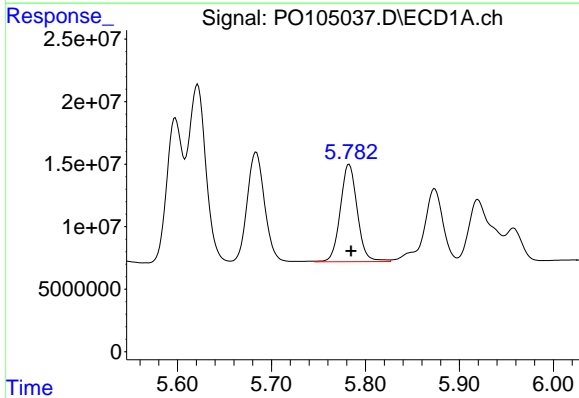
R.T.: 5.684 min
 Delta R.T.: -0.001 min
 Response: 113408524
 Conc: 548.23 ng/ml

Instrument :
 ECD_O
 ClientSampleId :



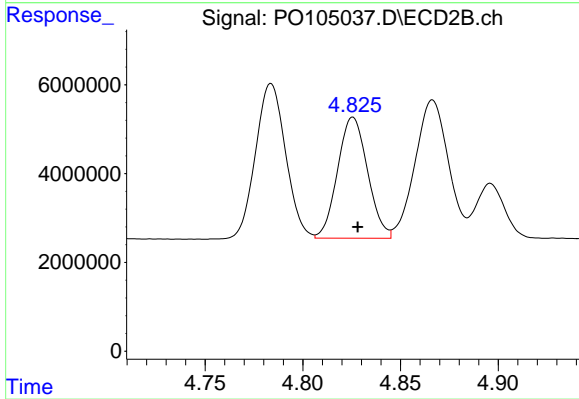
#5 AR-1016-3

R.T.: 4.784 min
 Delta R.T.: -0.002 min
 Response: 37151739
 Conc: 548.65 ng/ml



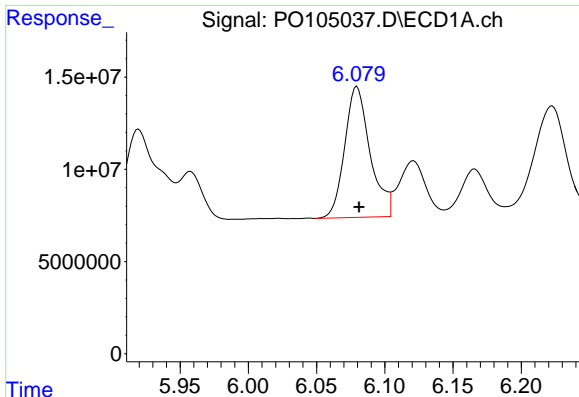
#6 AR-1016-4

R.T.: 5.783 min
 Delta R.T.: -0.002 min
 Response: 97777089
 Conc: 538.56 ng/ml



#6 AR-1016-4

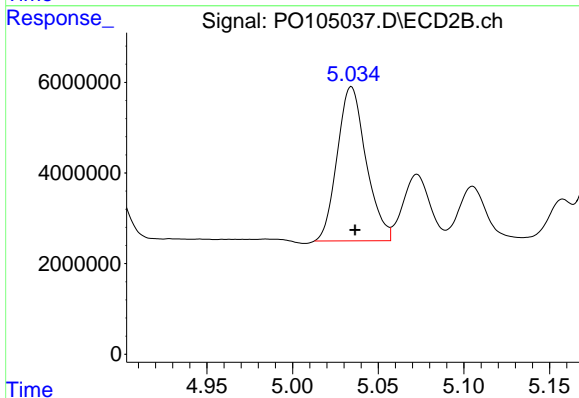
R.T.: 4.826 min
 Delta R.T.: -0.002 min
 Response: 29168756
 Conc: 542.38 ng/ml



#7 AR-1016-5

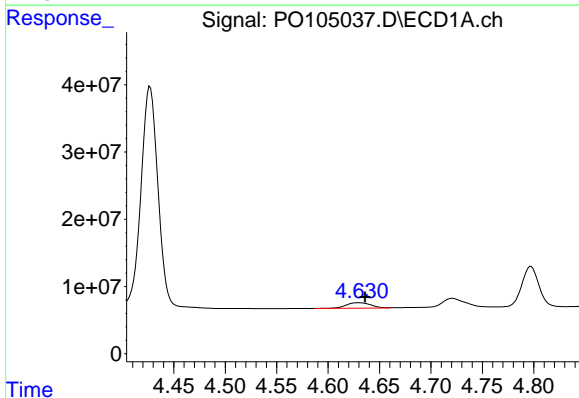
R.T.: 6.080 min
 Delta R.T.: -0.001 min
 Response: 91885675
 Conc: 564.57 ng/ml

Instrument :
 ECD_O
 ClientSampleId :



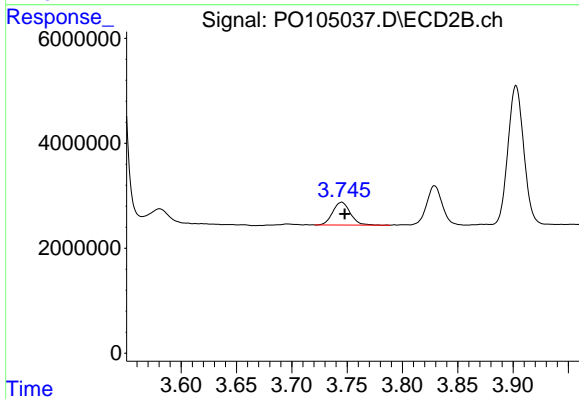
#7 AR-1016-5

R.T.: 5.034 min
 Delta R.T.: -0.002 min
 Response: 39799741
 Conc: 560.83 ng/ml



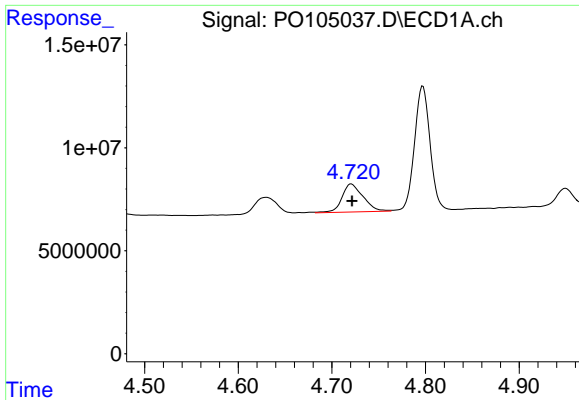
#8 AR-1221-1

R.T.: 4.630 min
 Delta R.T.: -0.006 min
 Response: 13347899
 Conc: 145.46 ng/ml



#8 AR-1221-1

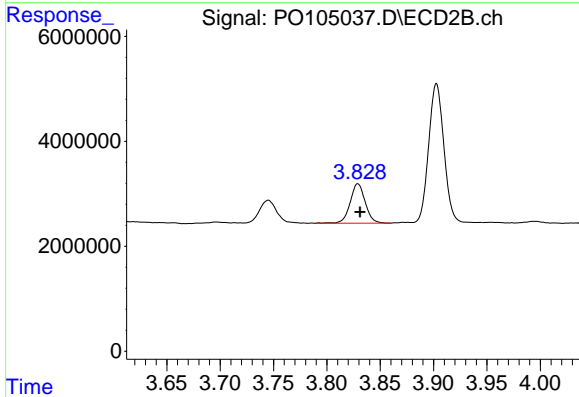
R.T.: 3.745 min
 Delta R.T.: -0.003 min
 Response: 4816415
 Conc: 147.54 ng/ml



#9 AR-1221-2

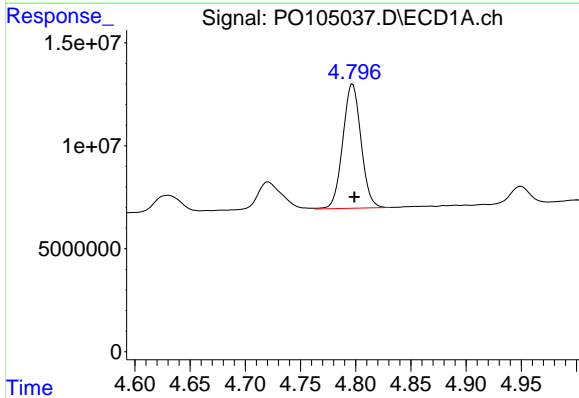
R.T.: 4.721 min
 Delta R.T.: -0.001 min
 Response: 21417550
 Conc: 298.81 ng/ml

Instrument :
 ECD_O
 ClientSampleId :



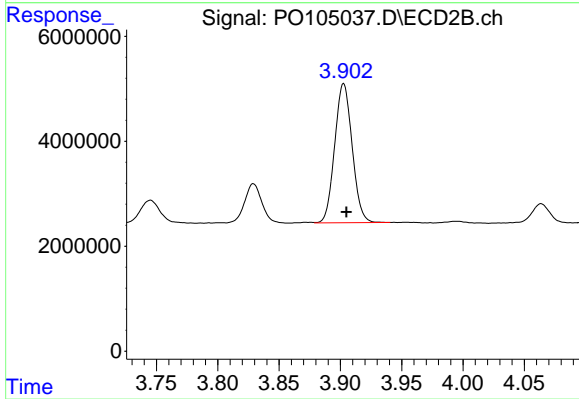
#9 AR-1221-2

R.T.: 3.829 min
 Delta R.T.: -0.002 min
 Response: 7365723
 Conc: 292.40 ng/ml



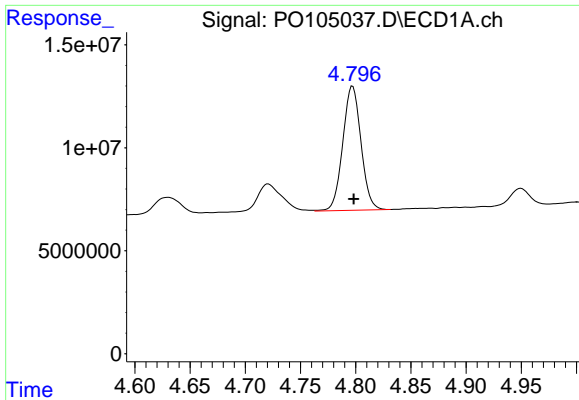
#10 AR-1221-3

R.T.: 4.797 min
 Delta R.T.: -0.002 min
 Response: 69314677
 Conc: 344.30 ng/ml



#10 AR-1221-3

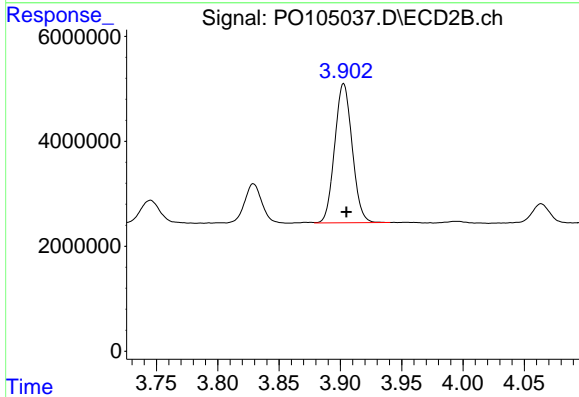
R.T.: 3.903 min
 Delta R.T.: -0.002 min
 Response: 26327071
 Conc: 349.79 ng/ml



#11 AR-1232-1

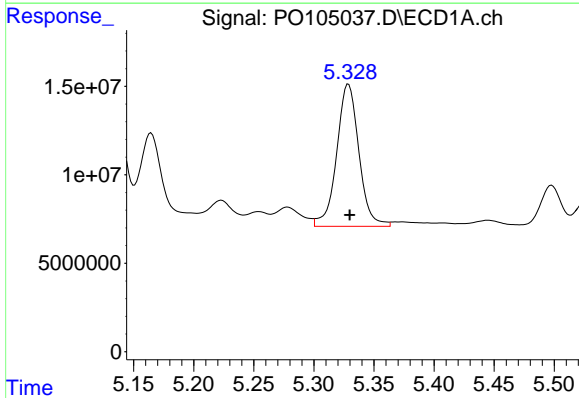
R.T.: 4.797 min
 Delta R.T.: -0.001 min
 Response: 69314677
 Conc: 422.14 ng/ml

Instrument :
 ECD_O
 ClientSampleId :



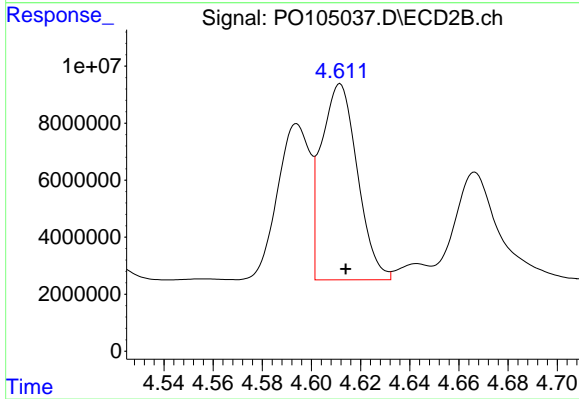
#11 AR-1232-1

R.T.: 3.903 min
 Delta R.T.: -0.002 min
 Response: 26327071
 Conc: 426.66 ng/ml



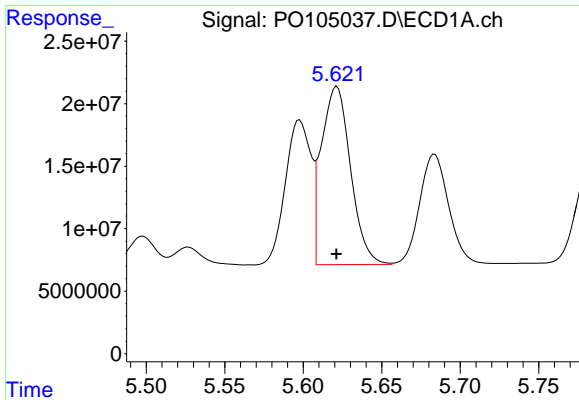
#12 AR-1232-2

R.T.: 5.329 min
 Delta R.T.: 0.000 min
 Response: 103346517
 Conc: 1249.62 ng/ml



#12 AR-1232-2

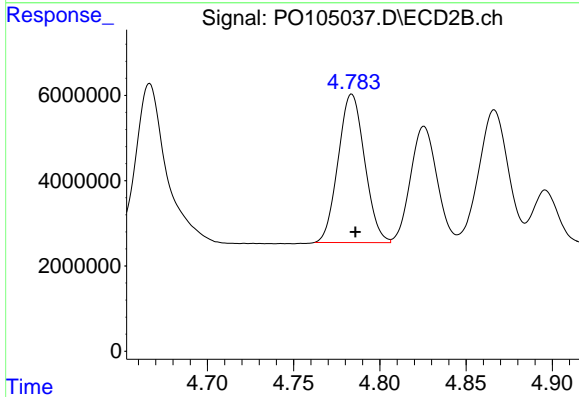
R.T.: 4.612 min
 Delta R.T.: -0.002 min
 Response: 70267653
 Conc: 1154.37 ng/ml



#13 AR-1232-3

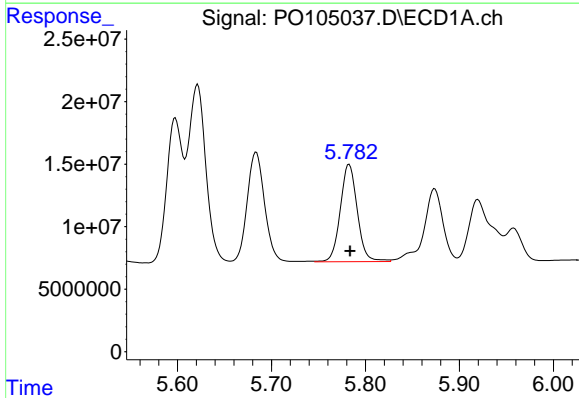
R.T.: 5.621 min
 Delta R.T.: 0.000 min
 Response: 184601472
 Conc: 1174.79 ng/ml

Instrument :
 ECD_O
 ClientSampleId :



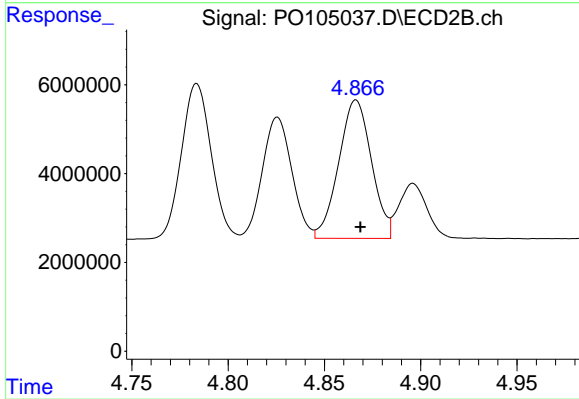
#13 AR-1232-3

R.T.: 4.784 min
 Delta R.T.: -0.002 min
 Response: 37151739
 Conc: 1167.31 ng/ml



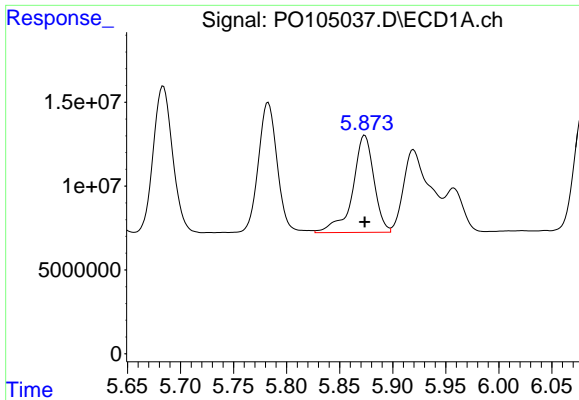
#14 AR-1232-4

R.T.: 5.783 min
 Delta R.T.: 0.000 min
 Response: 97777089
 Conc: 1134.16 ng/ml



#14 AR-1232-4

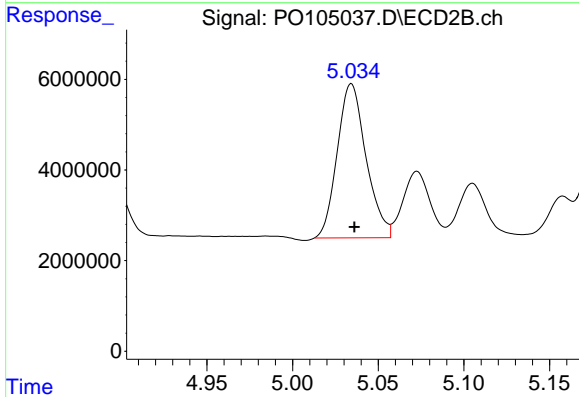
R.T.: 4.866 min
 Delta R.T.: -0.002 min
 Response: 36951149
 Conc: 1286.67 ng/ml



#15 AR-1232-5

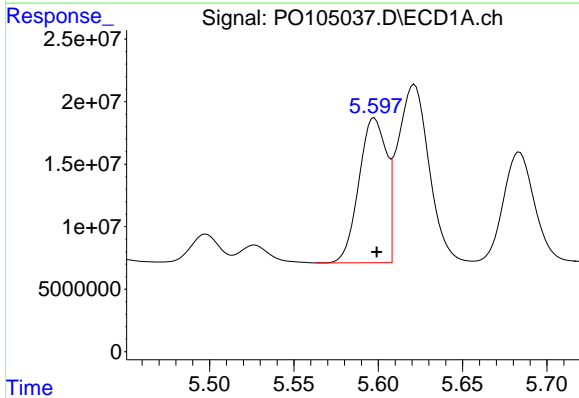
R.T.: 5.874 min
 Delta R.T.: 0.000 min
 Response: 81136302
 Conc: 1416.72 ng/m

Instrument :
 ECD_O
 ClientSampleId :



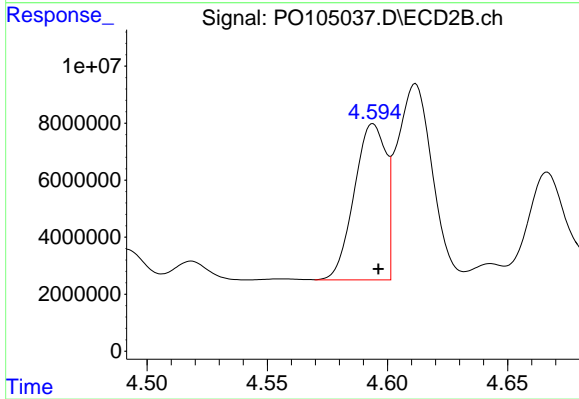
#15 AR-1232-5

R.T.: 5.034 min
 Delta R.T.: -0.002 min
 Response: 39799741
 Conc: 1278.32 ng/ml



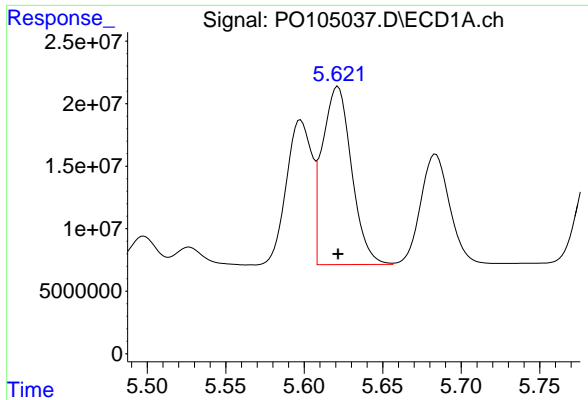
#16 AR-1242-1

R.T.: 5.598 min
 Delta R.T.: -0.002 min
 Response: 130912443
 Conc: 670.59 ng/ml



#16 AR-1242-1

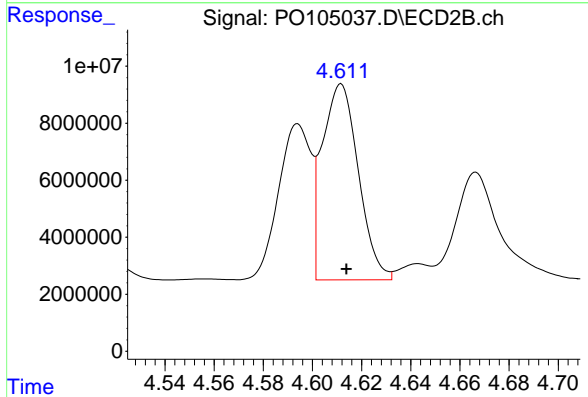
R.T.: 4.594 min
 Delta R.T.: -0.002 min
 Response: 50136986
 Conc: 654.88 ng/ml



#17 AR-1242-2

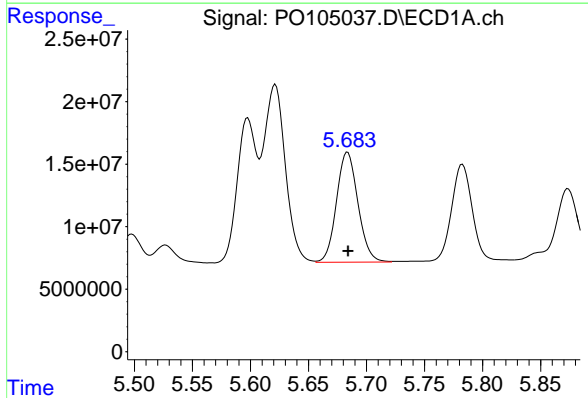
R.T.: 5.621 min
 Delta R.T.: 0.000 min
 Response: 184601472
 Conc: 674.43 ng/ml

Instrument :
 ECD_O
 ClientSampleId :



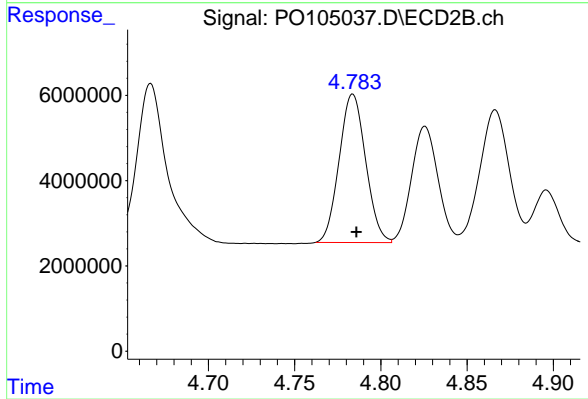
#17 AR-1242-2

R.T.: 4.612 min
 Delta R.T.: -0.002 min
 Response: 70267653
 Conc: 669.73 ng/ml



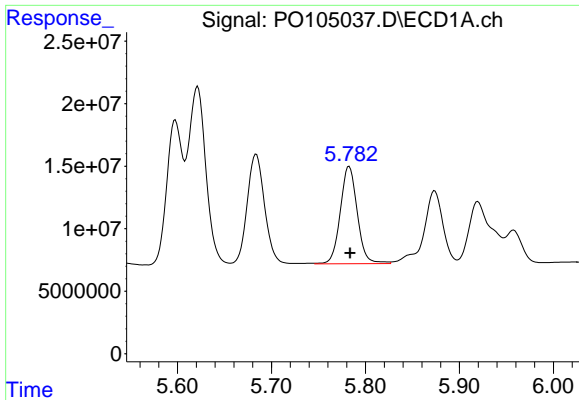
#18 AR-1242-3

R.T.: 5.684 min
 Delta R.T.: 0.000 min
 Response: 113408524
 Conc: 672.00 ng/ml



#18 AR-1242-3

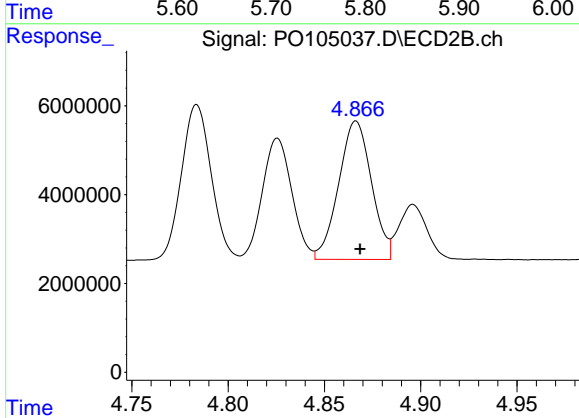
R.T.: 4.784 min
 Delta R.T.: -0.002 min
 Response: 37151739
 Conc: 669.39 ng/ml



#19 AR-1242-4

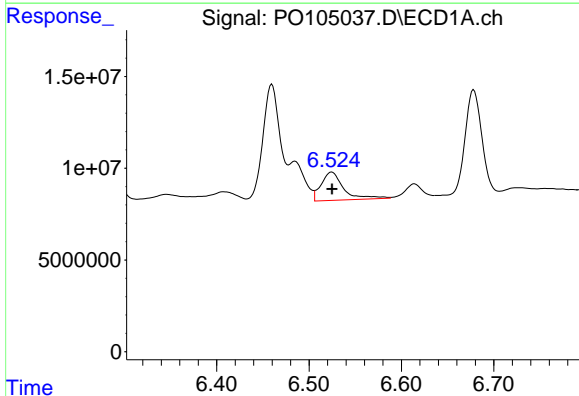
R.T.: 5.783 min
 Delta R.T.: 0.000 min
 Response: 97777089
 Conc: 649.15 ng/ml

Instrument :
 ECD_O
 ClientSampleId :



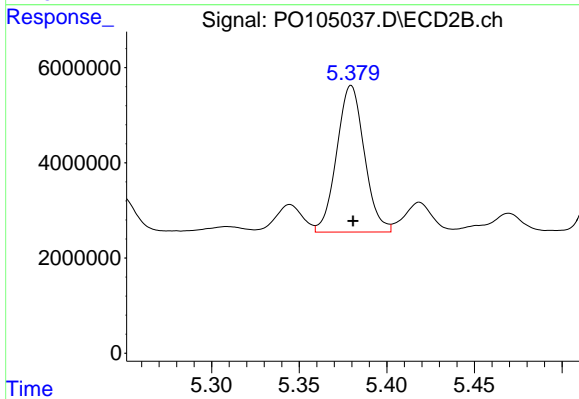
#19 AR-1242-4

R.T.: 4.866 min
 Delta R.T.: -0.002 min
 Response: 36951149
 Conc: 660.30 ng/ml



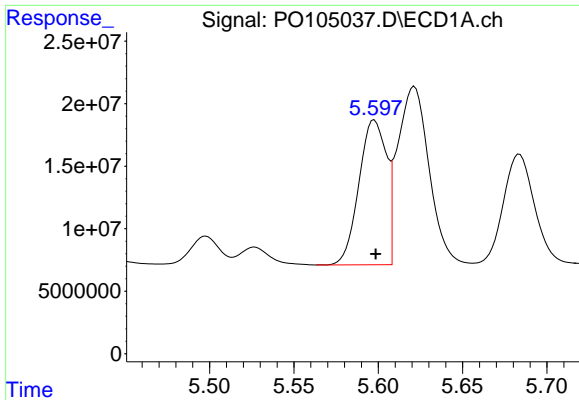
#20 AR-1242-5

R.T.: 6.525 min
 Delta R.T.: 0.000 min
 Response: 25918569
 Conc: 155.34 ng/ml



#20 AR-1242-5

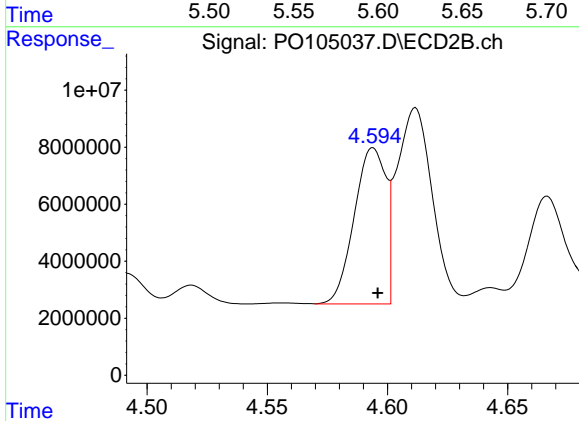
R.T.: 5.380 min
 Delta R.T.: -0.001 min
 Response: 33859434
 Conc: 477.45 ng/ml



#21 AR-1248-1

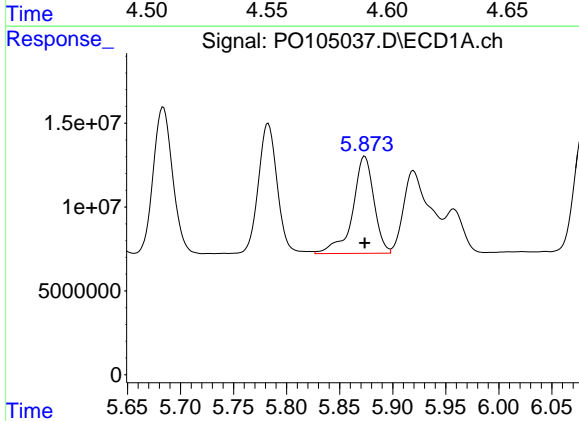
R.T.: 5.598 min
 Delta R.T.: 0.000 min
 Response: 130912443
 Conc: 844.44 ng/ml

Instrument :
 ECD_O
 ClientSampleId :



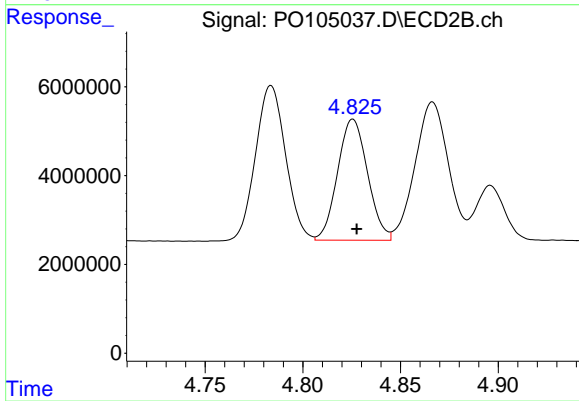
#21 AR-1248-1

R.T.: 4.594 min
 Delta R.T.: -0.002 min
 Response: 50136986
 Conc: 818.12 ng/ml



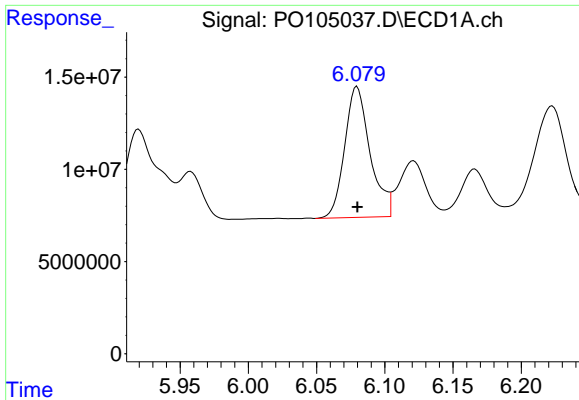
#22 AR-1248-2

R.T.: 5.874 min
 Delta R.T.: 0.000 min
 Response: 81136302
 Conc: 367.81 ng/ml



#22 AR-1248-2

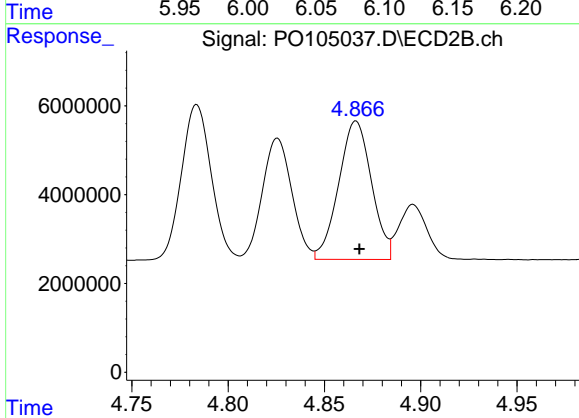
R.T.: 4.826 min
 Delta R.T.: -0.002 min
 Response: 29168756
 Conc: 350.92 ng/ml



#23 AR-1248-3

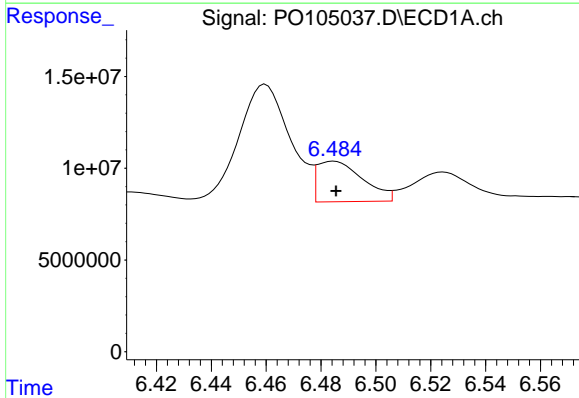
R.T.: 6.080 min
 Delta R.T.: 0.000 min
 Response: 91885675
 Conc: 374.25 ng/ml

Instrument :
 ECD_O
 ClientSampleId :



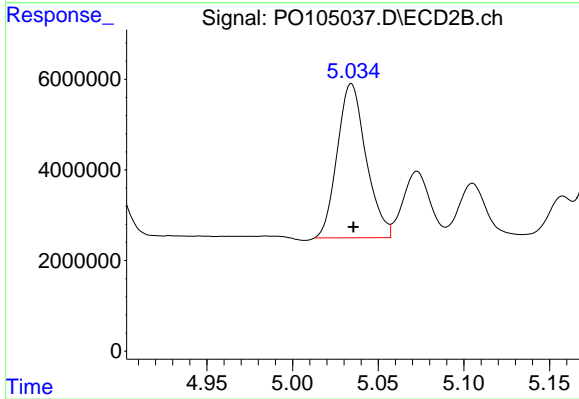
#23 AR-1248-3

R.T.: 4.866 min
 Delta R.T.: -0.002 min
 Response: 36951149
 Conc: 424.01 ng/ml



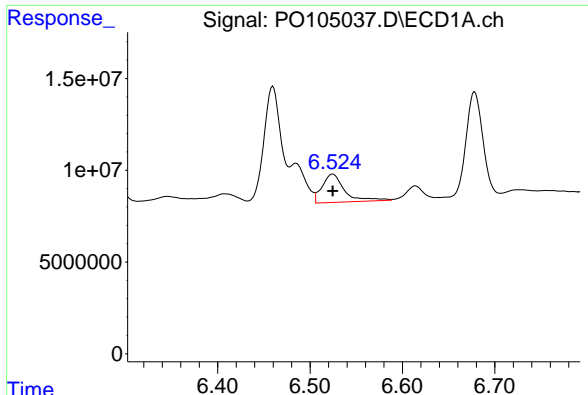
#24 AR-1248-4

R.T.: 6.485 min
 Delta R.T.: 0.000 min
 Response: 25470552
 Conc: 84.20 ng/ml



#24 AR-1248-4

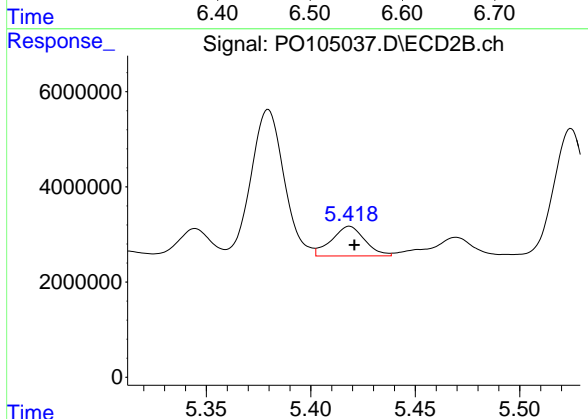
R.T.: 5.034 min
 Delta R.T.: -0.001 min
 Response: 39799741
 Conc: 385.66 ng/ml



#25 AR-1248-5

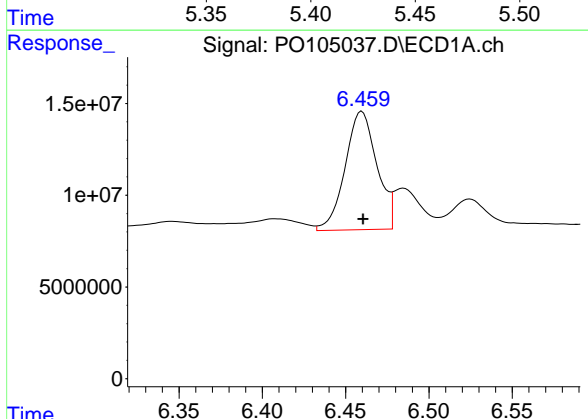
R.T.: 6.525 min
 Delta R.T.: 0.000 min
 Response: 25918569
 Conc: 91.19 ng/ml

Instrument :
 ECD_O
 ClientSampleId :



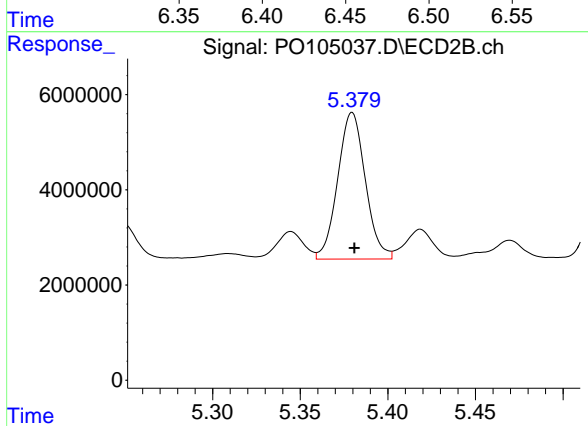
#25 AR-1248-5

R.T.: 5.419 min
 Delta R.T.: -0.002 min
 Response: 6897316
 Conc: 67.08 ng/ml



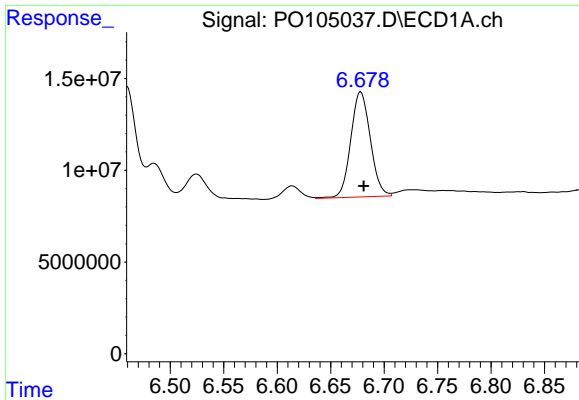
#26 AR-1254-1

R.T.: 6.460 min
 Delta R.T.: 0.000 min
 Response: 85379595
 Conc: 294.99 ng/ml



#26 AR-1254-1

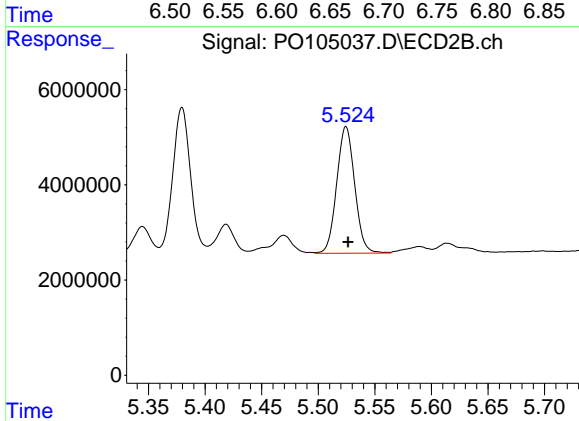
R.T.: 5.380 min
 Delta R.T.: -0.001 min
 Response: 33859434
 Conc: 225.65 ng/ml



#27 AR-1254-2

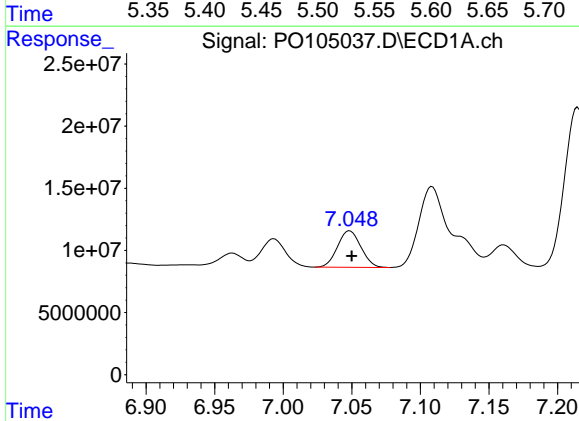
R.T.: 6.678 min
 Delta R.T.: -0.003 min
 Response: 72945327
 Conc: 175.67 ng/ml

Instrument :
 ECD_O
 ClientSampleId :



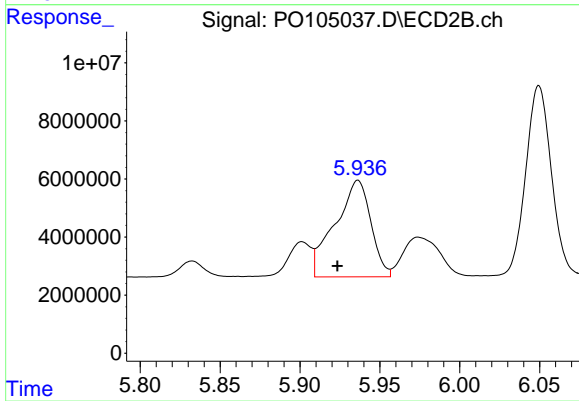
#27 AR-1254-2

R.T.: 5.525 min
 Delta R.T.: -0.002 min
 Response: 29492397
 Conc: 220.33 ng/ml



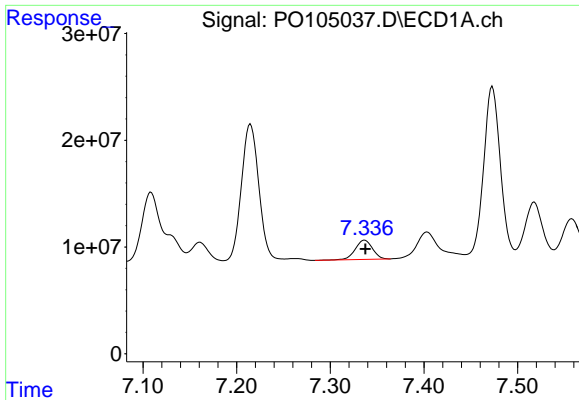
#28 AR-1254-3

R.T.: 7.048 min
 Delta R.T.: -0.001 min
 Response: 34850313
 Conc: 83.48 ng/ml



#28 AR-1254-3

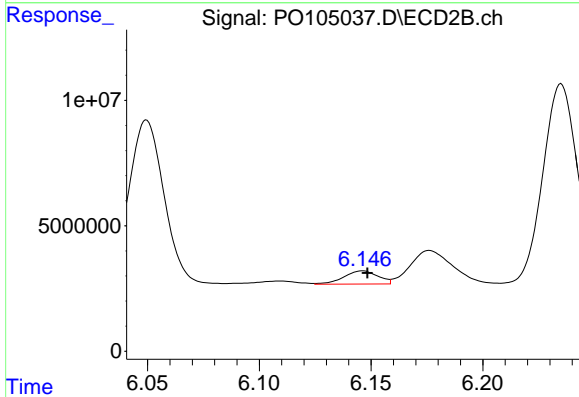
R.T.: 5.936 min
 Delta R.T.: 0.013 min
 Response: 51941078
 Conc: 244.46 ng/ml



#29 AR-1254-4

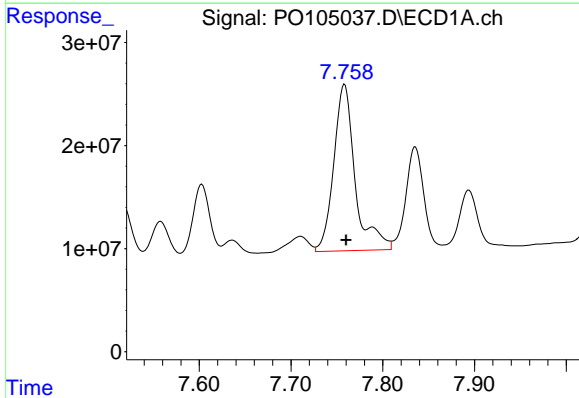
R.T.: 7.337 min
 Delta R.T.: 0.000 min
 Response: 23213598
 Conc: 74.27 ng/ml

Instrument :
 ECD_O
 ClientSampleId :



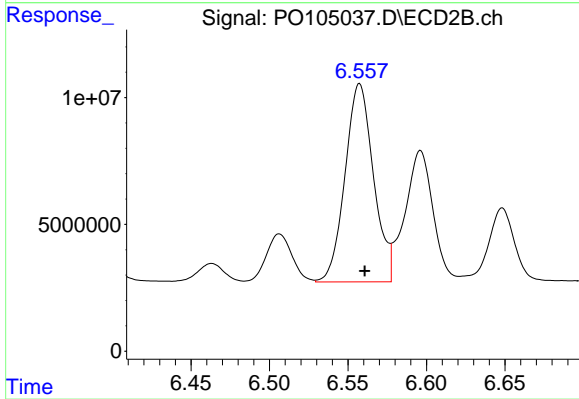
#29 AR-1254-4

R.T.: 6.146 min
 Delta R.T.: -0.002 min
 Response: 5582313
 Conc: 42.03 ng/ml



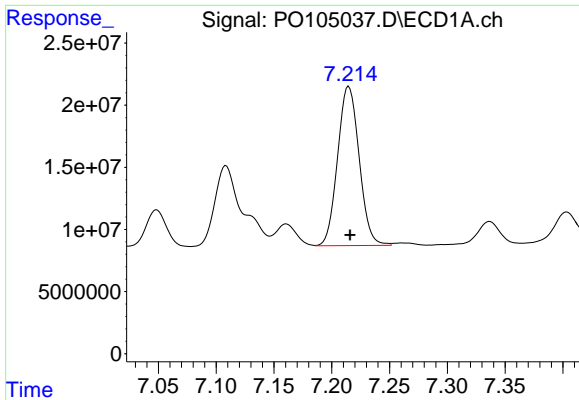
#30 AR-1254-5

R.T.: 7.758 min
 Delta R.T.: -0.002 min
 Response: 261929728
 Conc: 715.89 ng/ml



#30 AR-1254-5

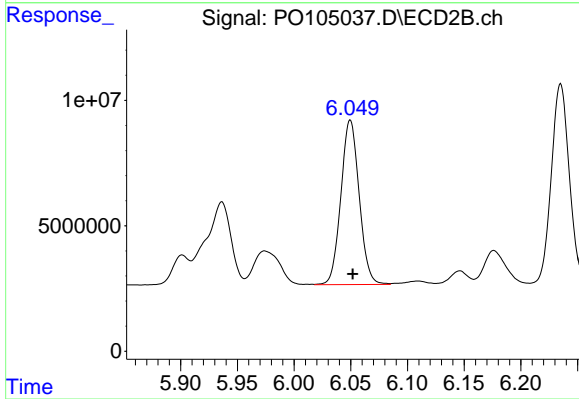
R.T.: 6.557 min
 Delta R.T.: -0.003 min
 Response: 98585890
 Conc: 531.11 ng/ml



#31 AR-1260-1

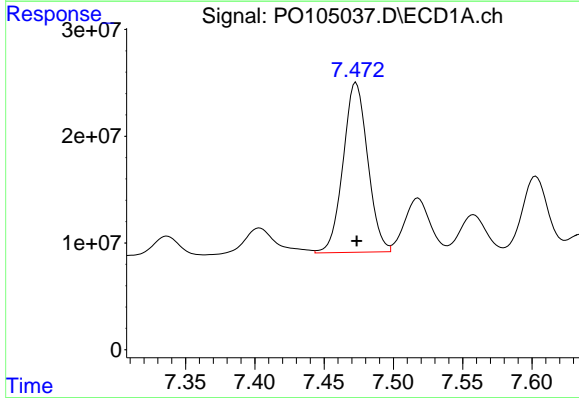
R.T.: 7.215 min
 Delta R.T.: -0.001 min
 Response: 165827484
 Conc: 522.26 ng/ml

Instrument :
 ECD_O
 ClientSampleId :



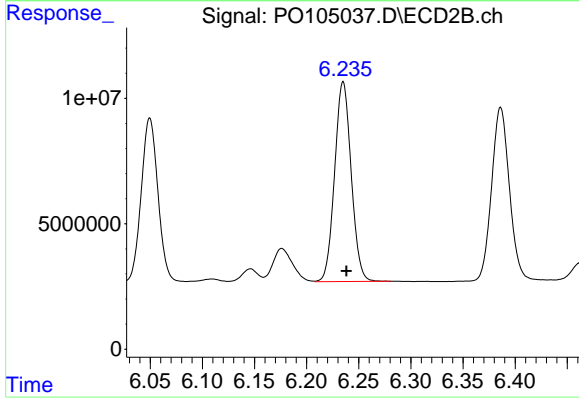
#31 AR-1260-1

R.T.: 6.050 min
 Delta R.T.: -0.002 min
 Response: 73716307
 Conc: 541.25 ng/ml



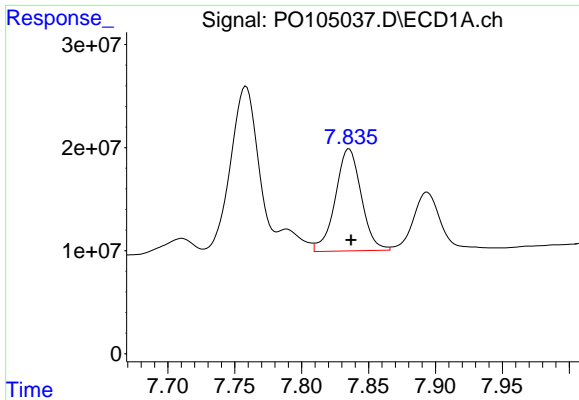
#32 AR-1260-2

R.T.: 7.473 min
 Delta R.T.: 0.000 min
 Response: 196045367
 Conc: 539.08 ng/ml



#32 AR-1260-2

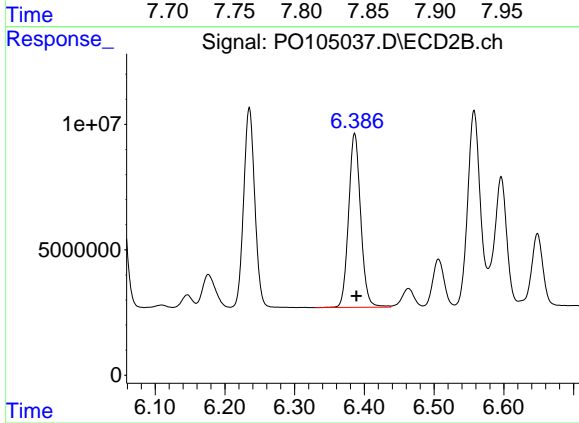
R.T.: 6.235 min
 Delta R.T.: -0.003 min
 Response: 88060705
 Conc: 523.36 ng/ml



#33 AR-1260-3

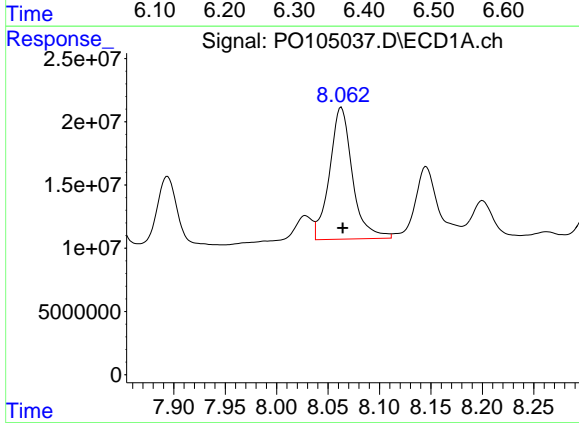
R.T.: 7.835 min
 Delta R.T.: -0.001 min
 Response: 133670584
 Conc: 521.32 ng/ml

Instrument :
 ECD_O
 ClientSampleId :



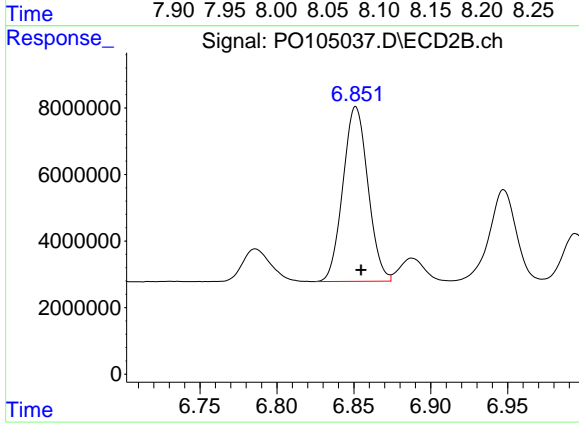
#33 AR-1260-3

R.T.: 6.386 min
 Delta R.T.: -0.003 min
 Response: 83674140
 Conc: 496.12 ng/ml



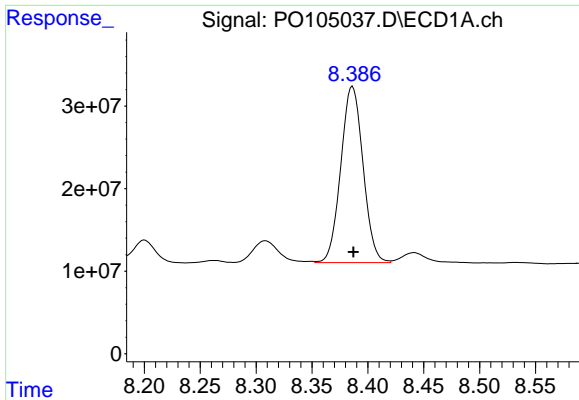
#34 AR-1260-4

R.T.: 8.063 min
 Delta R.T.: -0.001 min
 Response: 161109697
 Conc: 565.14 ng/ml



#34 AR-1260-4

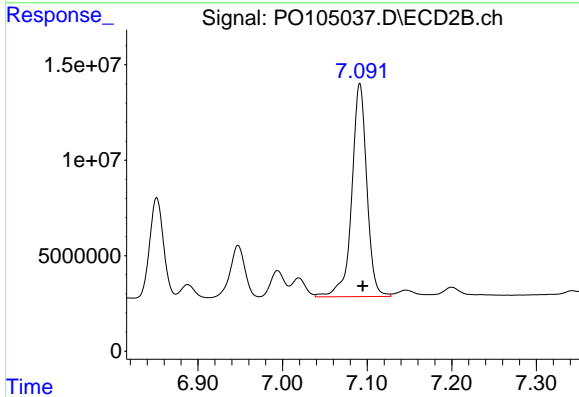
R.T.: 6.851 min
 Delta R.T.: -0.004 min
 Response: 59230784
 Conc: 540.87 ng/ml



#35 AR-1260-5

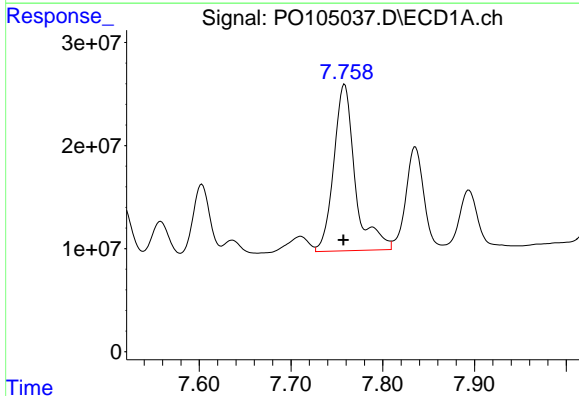
R.T.: 8.386 min
 Delta R.T.: 0.000 min
 Response: 295647042
 Conc: 528.93 ng/ml

Instrument :
 ECD_O
 ClientSampleId :



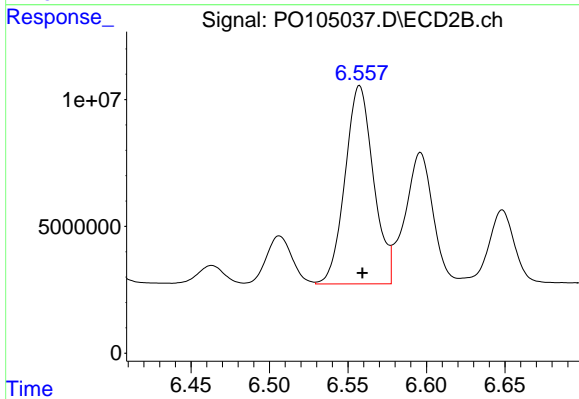
#35 AR-1260-5

R.T.: 7.091 min
 Delta R.T.: -0.003 min
 Response: 138199182
 Conc: 540.65 ng/ml



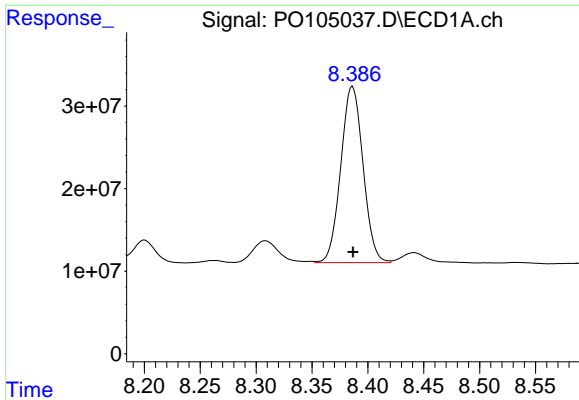
#36 AR-1262-1

R.T.: 7.758 min
 Delta R.T.: 0.001 min
 Response: 261929728
 Conc: 899.83 ng/ml



#36 AR-1262-1

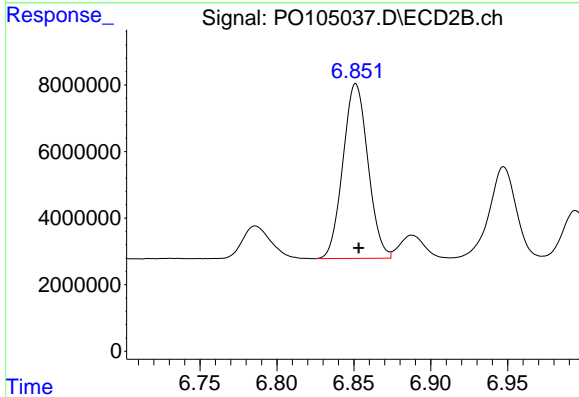
R.T.: 6.557 min
 Delta R.T.: -0.002 min
 Response: 98585890
 Conc: 975.09 ng/ml



#37 AR-1262-2

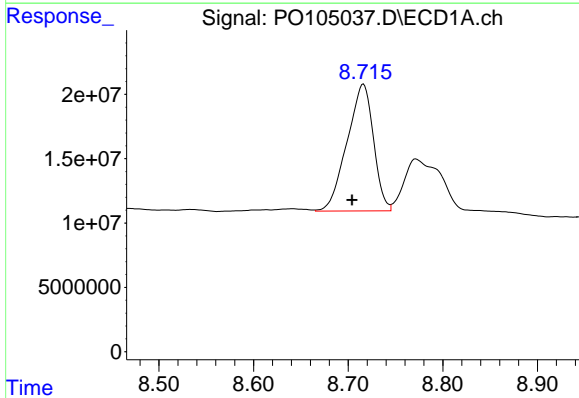
R.T.: 8.386 min
 Delta R.T.: 0.000 min
 Response: 295647042
 Conc: 402.51 ng/ml

Instrument :
 ECD_O
 ClientSampleId :



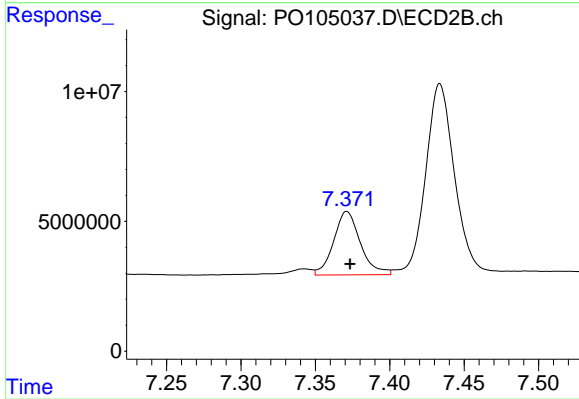
#37 AR-1262-2

R.T.: 6.851 min
 Delta R.T.: -0.002 min
 Response: 59230784
 Conc: 358.36 ng/ml



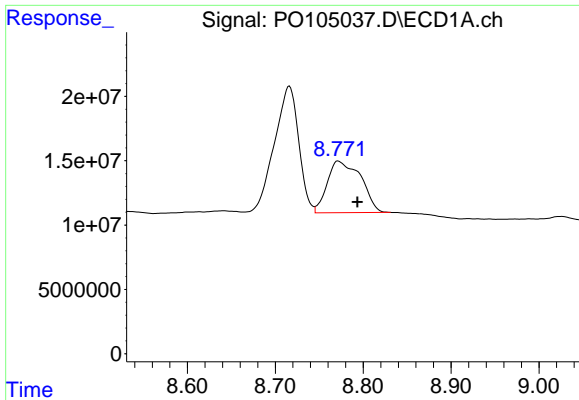
#38 AR-1262-3

R.T.: 8.716 min
 Delta R.T.: 0.012 min
 Response: 190859493
 Conc: 401.34 ng/ml



#38 AR-1262-3

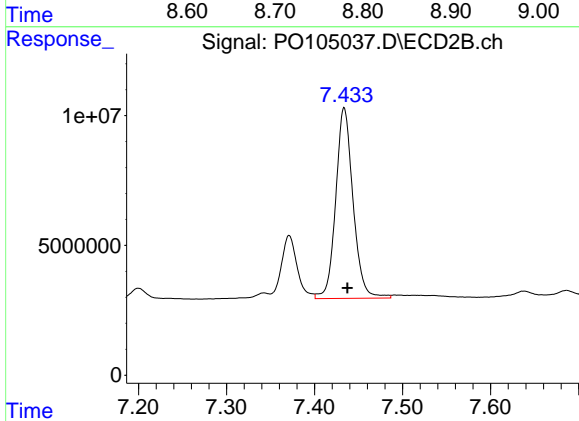
R.T.: 7.371 min
 Delta R.T.: -0.002 min
 Response: 30653565
 Conc: 243.87 ng/ml



#39 AR-1262-4

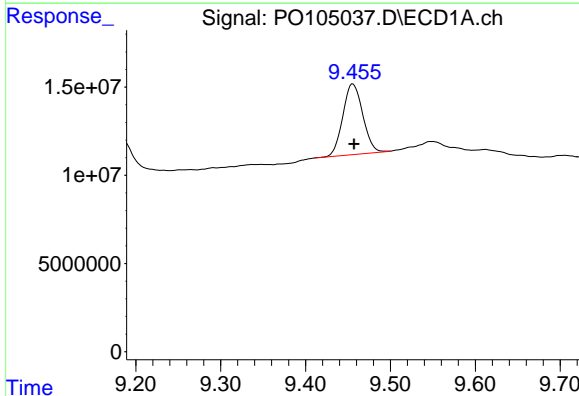
R.T.: 8.772 min
Delta R.T.: -0.021 min
Response: 106358623
Conc: 307.33 ng/ml

Instrument :
ECD_O
ClientSampleId :



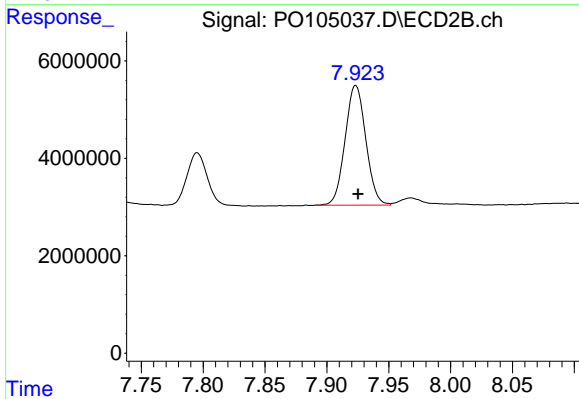
#39 AR-1262-4

R.T.: 7.434 min
Delta R.T.: -0.003 min
Response: 100667588
Conc: 438.68 ng/ml



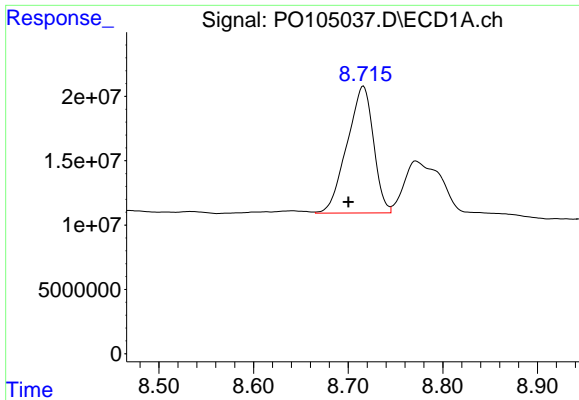
#40 AR-1262-5

R.T.: 9.456 min
Delta R.T.: -0.002 min
Response: 65575131
Conc: 265.10 ng/ml



#40 AR-1262-5

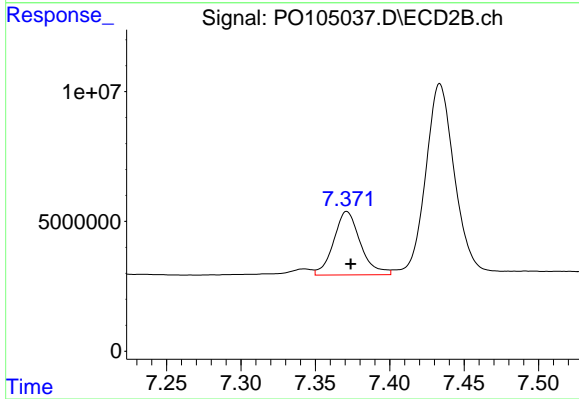
R.T.: 7.923 min
Delta R.T.: -0.002 min
Response: 28676711
Conc: 291.80 ng/ml



#41 AR-1268-1

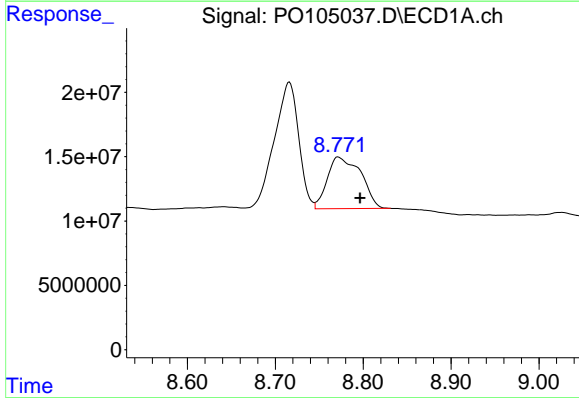
R.T.: 8.716 min
 Delta R.T.: 0.016 min
 Response: 190859493
 Conc: 242.06 ng/ml

Instrument :
 ECD_O
 ClientSampleId :



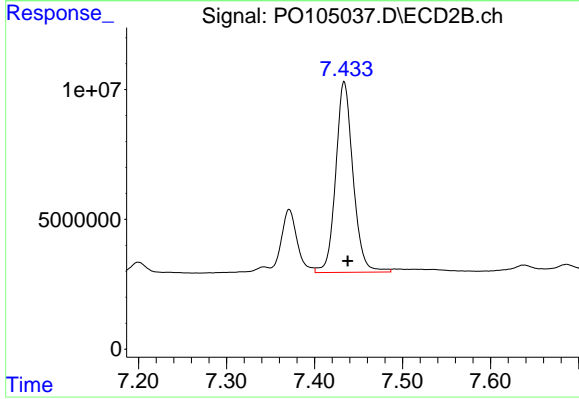
#41 AR-1268-1

R.T.: 7.371 min
 Delta R.T.: -0.003 min
 Response: 30653565
 Conc: 87.13 ng/ml



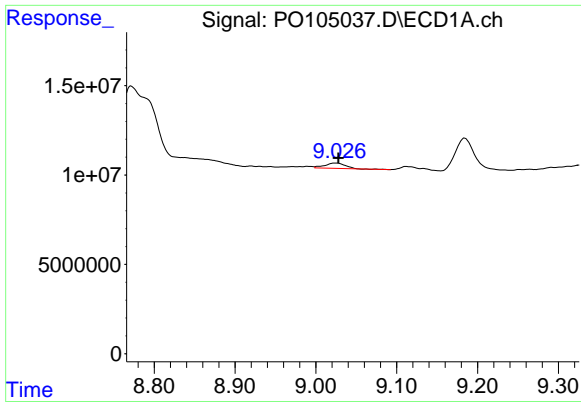
#42 AR-1268-2

R.T.: 8.772 min
 Delta R.T.: -0.024 min
 Response: 106358623
 Conc: 153.41 ng/ml



#42 AR-1268-2

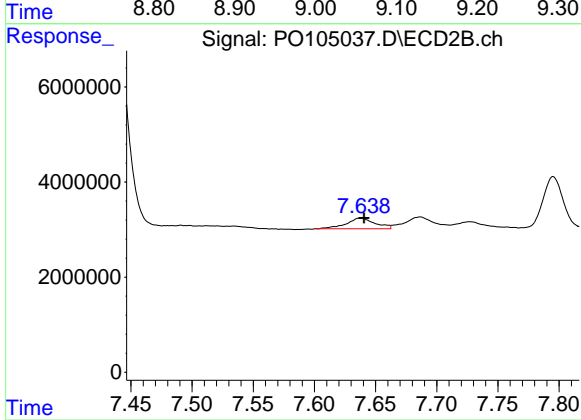
R.T.: 7.434 min
 Delta R.T.: -0.004 min
 Response: 100667588
 Conc: 324.60 ng/ml



#43 AR-1268-3

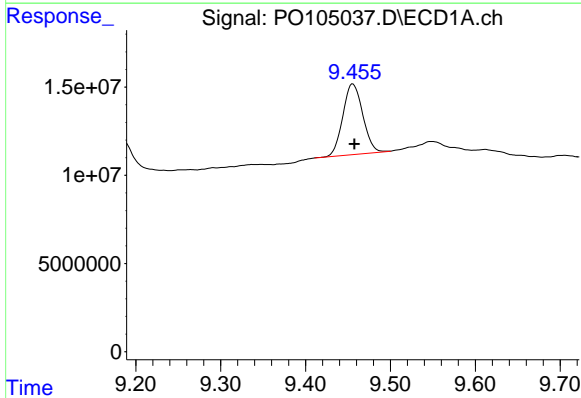
R.T.: 9.025 min
 Delta R.T.: -0.003 min
 Response: 5355908
 Conc: 8.97 ng/ml

Instrument :
 ECD_O
 ClientSampleId :



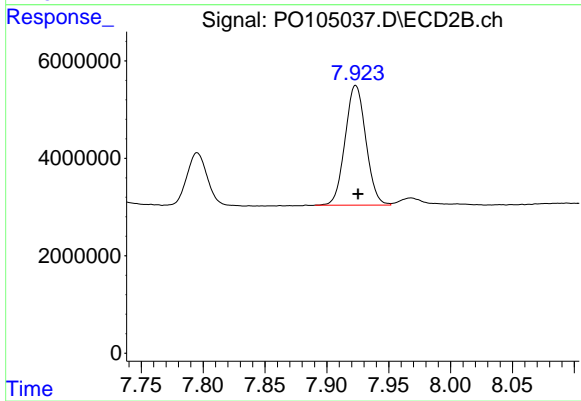
#43 AR-1268-3

R.T.: 7.638 min
 Delta R.T.: -0.003 min
 Response: 3644994
 Conc: 14.51 ng/ml



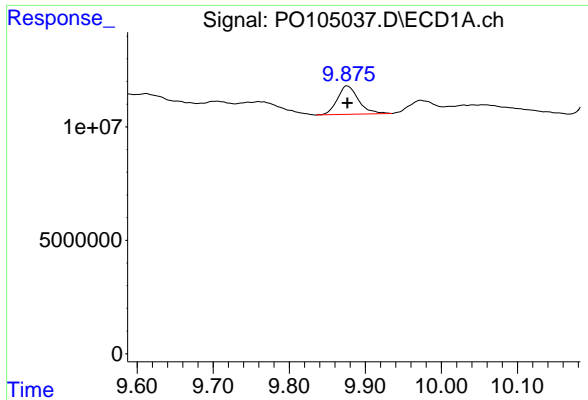
#44 AR-1268-4

R.T.: 9.456 min
 Delta R.T.: -0.002 min
 Response: 65575131
 Conc: 259.90 ng/ml



#44 AR-1268-4

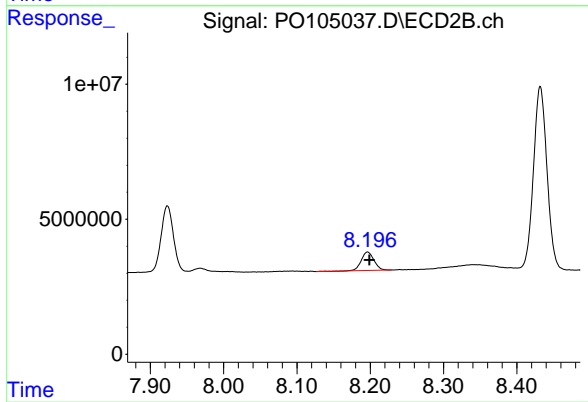
R.T.: 7.923 min
 Delta R.T.: -0.002 min
 Response: 28676711
 Conc: 275.46 ng/ml



#45 AR-1268-5

R.T.: 9.876 min
Delta R.T.: 0.000 min
Response: 24176363
Conc: 12.33 ng/ml

Instrument :
ECD_O
ClientSampleId :



#45 AR-1268-5

R.T.: 8.196 min
Delta R.T.: -0.003 min
Response: 8291952
Conc: 12.38 ng/ml