

Data Path : Z:\pestpcbsrv\HPCHEM1\ECD O\Data\PO073018\
 Data File : PO047405.D
 Signal(s) : Signal #1: ECD1A.CH Signal #2: ECD2B.CH
 Acq On : 31 Jul 2018 2:07
 Operator : SM/SJ
 Sample : PB111576BL
 Misc :
 ALS Vial : 34 Sample Multiplier: 1

Instrument :
 ECD_O
 ClientSampled :
 PB111576BL

Manual Integrations
 APPROVED

Sohil
 7/31/2018 3:41:10 PM

Integration File signal 1: autoint1.e
 Integration File signal 2: autoint2.e
 Quant Time: Jul 31 04:35:32 2018
 Quant Method : Z:\pestpcbsrv\HPCHEM1\ECD_O\methods\PO072718.M
 Quant Title : GC EXTRACTABLES
 QLast Update : Fri Jul 27 02:33:29 2018
 Response via : Initial Calibration
 Integrator: ChemStation 6890 Scale Mode: Small noise peaks clipped

Volume Inj. : 2 µl
 Signal #1 Phase : ZB-MR1 Signal #2 Phase: ZB-MR2
 Signal #1 Info : 30Mx0.32mmx 0.50µ Signal #2 Info : 30M x 0.32mm x 0.25µm

Compound	RT#1	RT#2	Resp#1	Resp#2	nq/ml	nq/ml
----------	------	------	--------	--------	-------	-------

 System Monitoring Compounds

1) SA Tetrachlo...	4.396	3.643	3273238	3940295	16.212	16.036
2) SA Decachlor...	10.088	8.636	2586683	2325044	15.859	14.791m

Target Compounds

(f)=RT Delta > 1/2 Window (#)=Amounts differ by > 25% (m)=manual int.

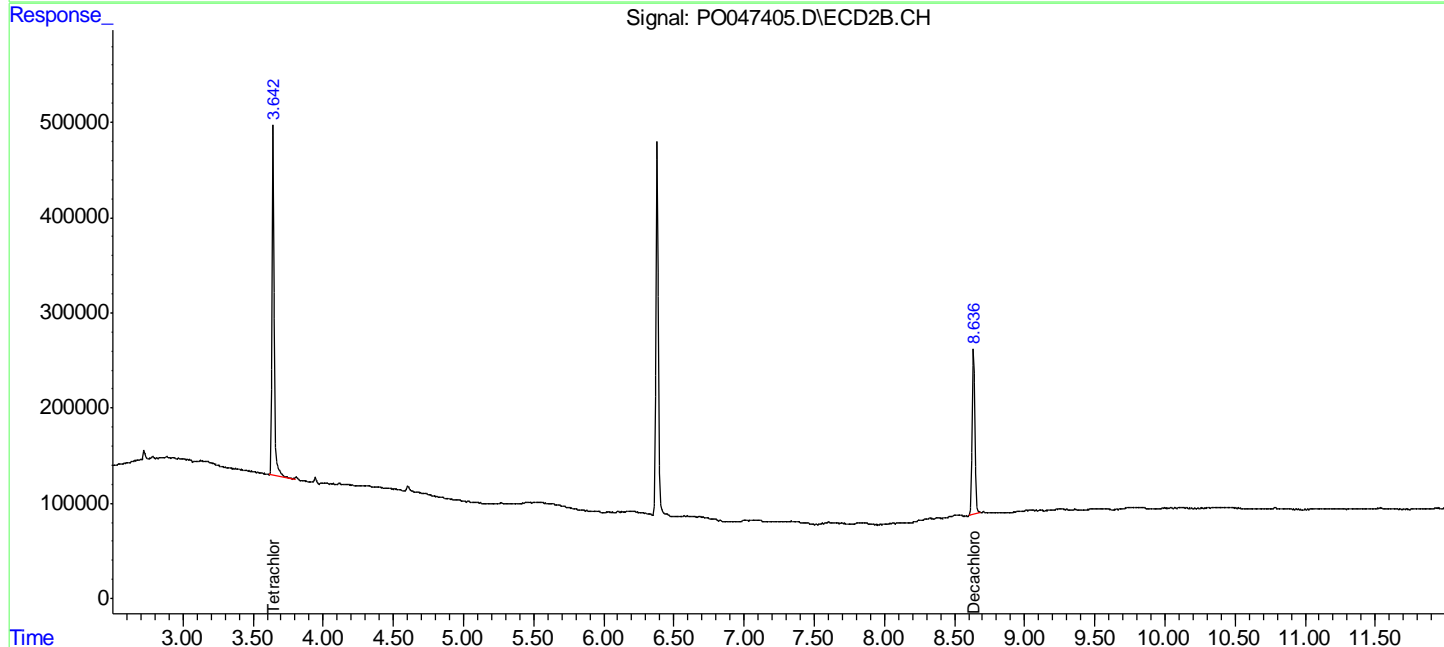
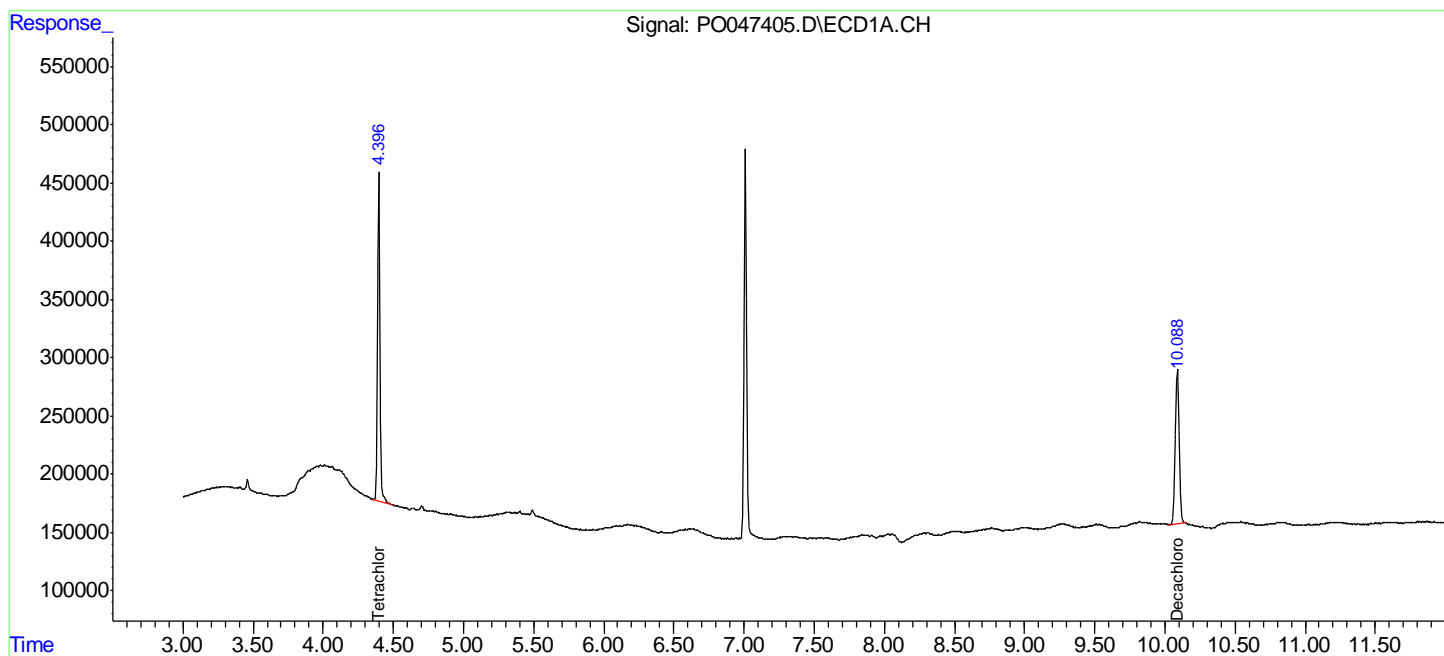
Data Path : Z:\pestpcbsrv\HPCHEM1\ECD O\Data\PO073018\
 Data File : PO047405.D
 Signal(s) : Signal #1: ECD1A.CH Signal #2: ECD2B.CH
 Acq On : 31 Jul 2018 2:07
 Operator : SM/SJ
 Sample : PB111576BL
 Misc :
 ALS Vial : 34 Sample Multiplier: 1

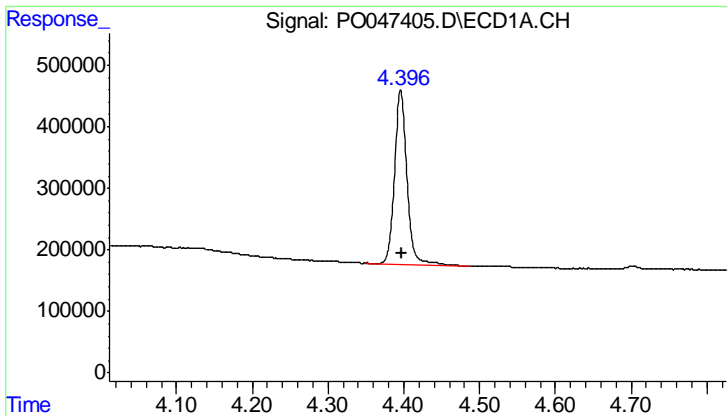
Instrument :
 ECD_O
Client Sampled :
 PB111576BL

Manual Integrations
APPROVED
 Sohil
 7/31/2018 3:41:10 PM

Integration File signal 1: autoint1.e
 Integration File signal 2: autoint2.e
 Quant Time: Jul 31 04:35:32 2018
 Quant Method : Z:\pestpcbsrv\HPCHEM1\ECD_O\methods\PO072718.M
 Quant Title : GC EXTRACTABLES
 QLast Update : Fri Jul 27 02:33:29 2018
 Response via : Initial Calibration
 Integrator: ChemStation 6890 Scale Mode: Small noise peaks clipped

Volume Inj. : 2 µl
 Signal #1 Phase : ZB-MR1 Signal #2 Phase: ZB-MR2
 Signal #1 Info : 30Mx0.32mmx 0.50µ Signal #2 Info : 30M x 0.32mm x 0.25µm



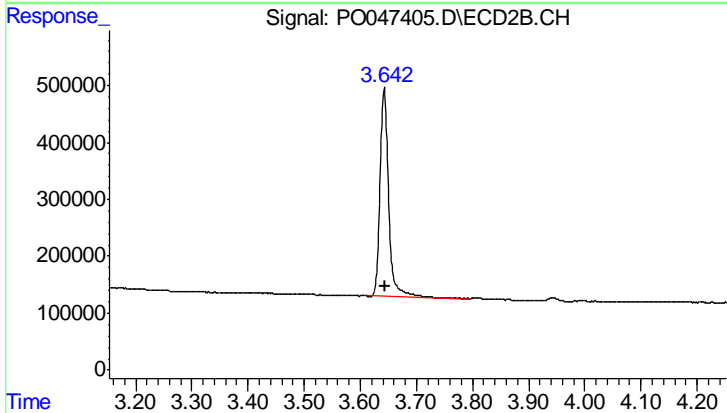


#1 Tetrachloro-m-xylene

R.T.: 4.396 min
 Delta R.T.: -0.001 min
 Response: 3273238
 Conc: 16.21 ng/ml

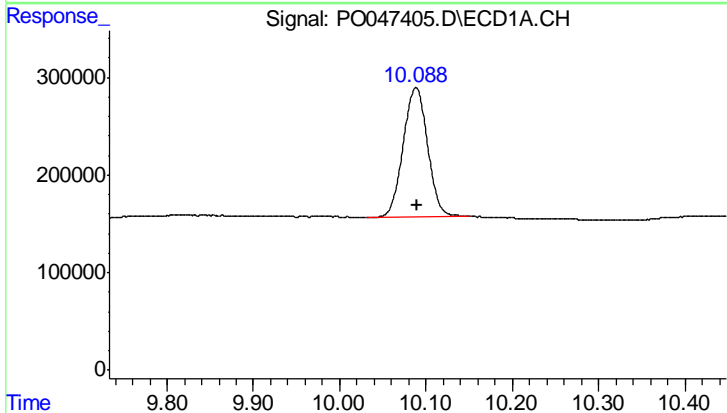
Instrument :
 ECD_O
 ClientSampled :
 PB111576BL

Manual Integrations
 APPROVED
 Sohil
 7/31/2018 3:41:10 PM



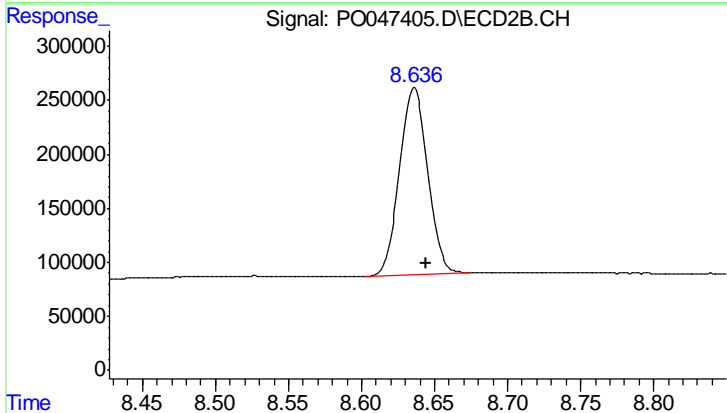
#1 Tetrachloro-m-xylene

R.T.: 3.643 min
 Delta R.T.: -0.003 min
 Response: 3940295
 Conc: 16.04 ng/ml



#2 Decachlorobiphenyl

R.T.: 10.088 min
 Delta R.T.: -0.001 min
 Response: 2586683
 Conc: 15.86 ng/ml



#2 Decachlorobiphenyl

R.T.: 8.636 min
 Delta R.T.: -0.009 min
 Response: 2325044
 Conc: 14.79 ng/ml m