

Data Path : Z:\pestpcbsrv\HPCHEM1\ECD O\Data\PO073018\
 Data File : PO047415.D
 Signal(s) : Signal #1: ECD1A.CH Signal #2: ECD2B.CH
 Acq On : 31 Jul 2018 4:46
 Operator : SM/SJ
 Sample : J4218-03
 Misc :
 ALS Vial : 42 Sample Multiplier: 1

Instrument :
 ECD_O
 ClientSampleId :
 TP-15-S

Integration File signal 1: autoint1.e
 Integration File signal 2: autoint2.e
 Quant Time: Jul 31 07:19:24 2018
 Quant Method : Z:\pestpcbsrv\HPCHEM1\ECD_O\methods\PO072718.M
 Quant Title : GC EXTRACTABLES
 QLast Update : Fri Jul 27 02:33:29 2018
 Response via : Initial Calibration
 Integrator: ChemStation 6890 Scale Mode: Small noise peaks clipped

Volume Inj. : 2 µl
 Signal #1 Phase : ZB-MR1 Signal #2 Phase: ZB-MR2
 Signal #1 Info : 30Mx0.32mmx 0.50µ Signal #2 Info : 30M x 0.32mm x 0.25µm

Compound	RT#1	RT#2	Resp#1	Resp#2	ng/ml	ng/ml

System Monitoring Compounds						
1) SA Tetrachlo...	4.395	3.642	4217607	4997974	20.890	20.340
2) SA Decachlor...	10.087	8.636	2504377	2420674	15.355	15.399

Target Compounds

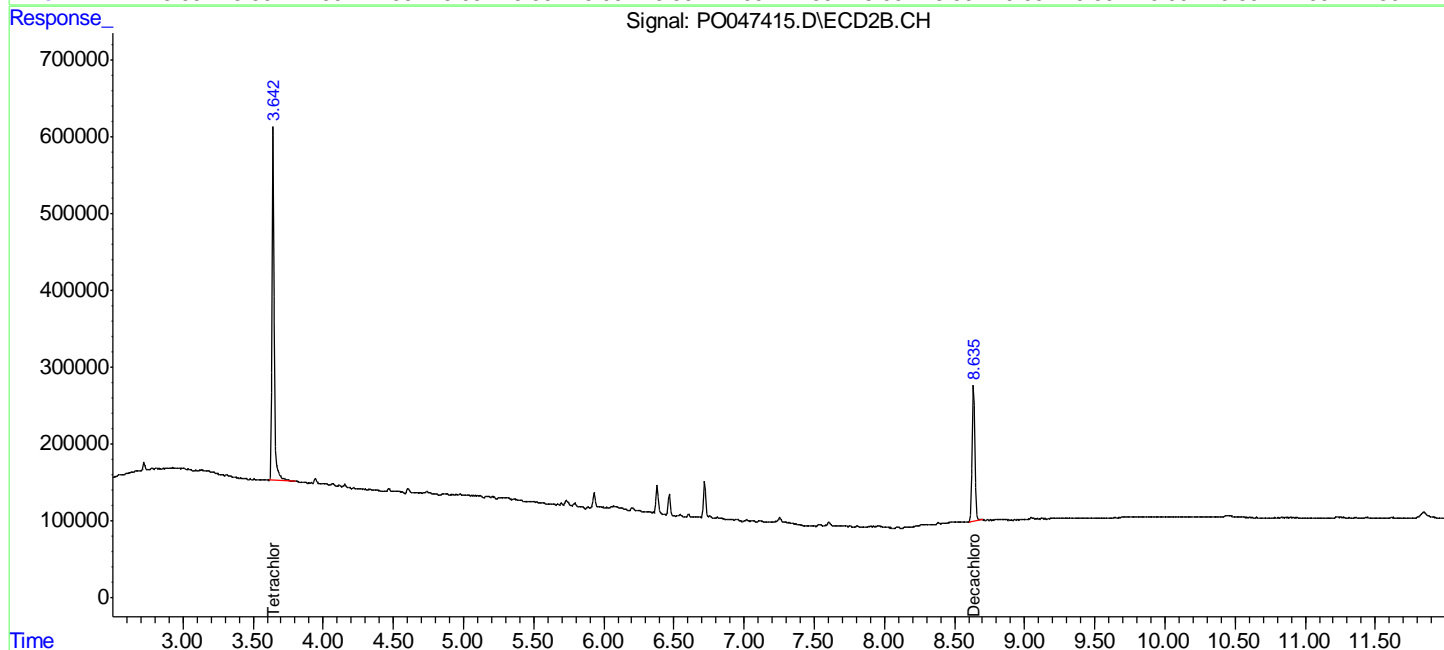
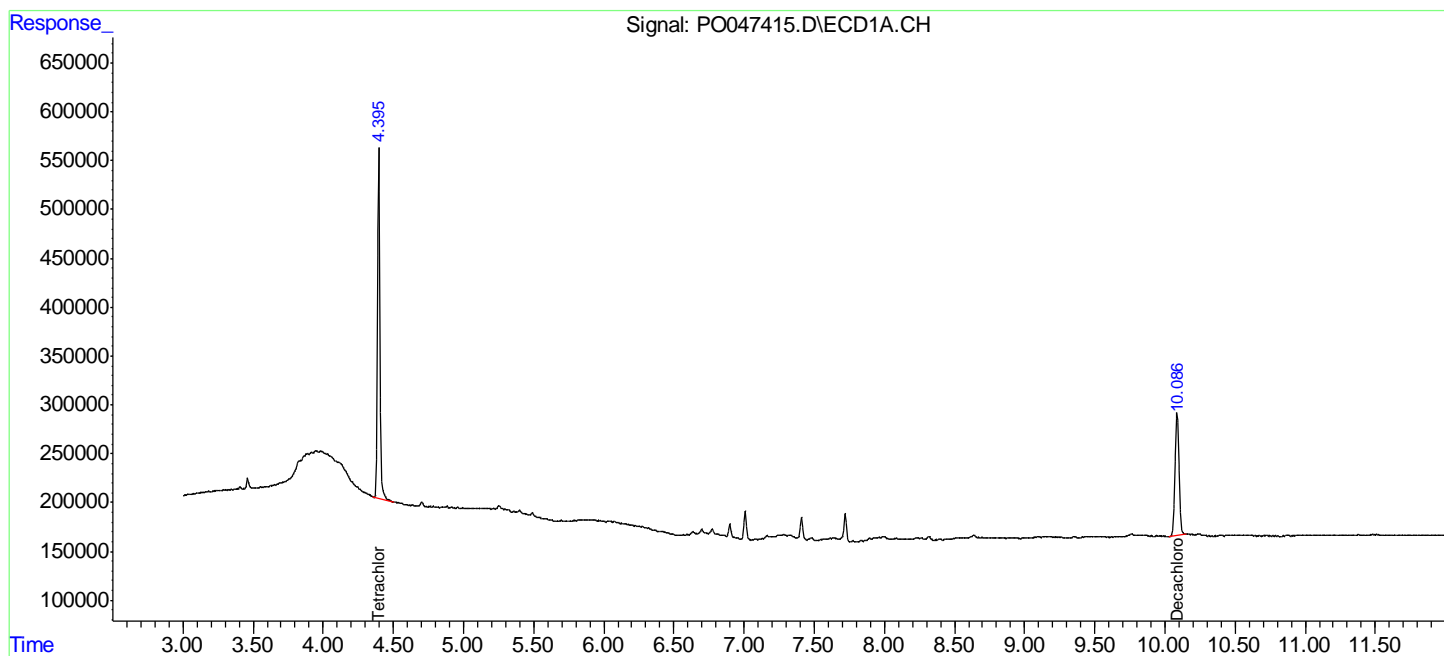
(f)=RT Delta > 1/2 Window (#)=Amounts differ by > 25% (m)=manual int.

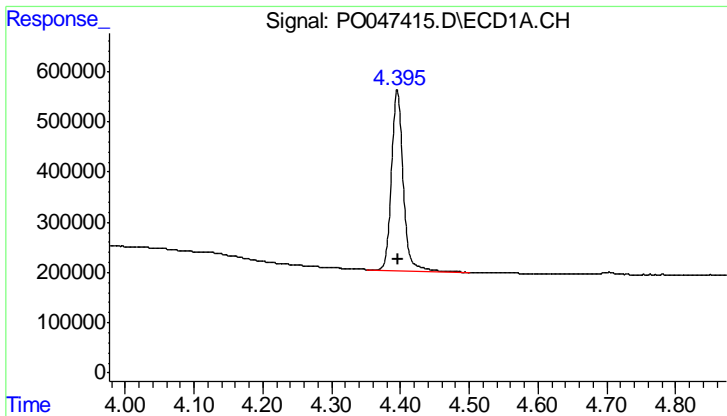
Data Path : Z:\pestpcbsrv\HPCHEM1\ECD O\Data\PO073018\
 Data File : PO047415.D
 Signal(s) : Signal #1: ECD1A.CH Signal #2: ECD2B.CH
 Acq On : 31 Jul 2018 4:46
 Operator : SM/SJ
 Sample : J4218-03
 Misc :
 ALS Vial : 42 Sample Multiplier: 1

Instrument :
 ECD_O
 ClientSampleId :
 TP-15-S

Integration File signal 1: autoint1.e
 Integration File signal 2: autoint2.e
 Quant Time: Jul 31 07:19:24 2018
 Quant Method : Z:\pestpcbsrv\HPCHEM1\ECD_O\methods\PO072718.M
 Quant Title : GC EXTRACTABLES
 QLast Update : Fri Jul 27 02:33:29 2018
 Response via : Initial Calibration
 Integrator: ChemStation 6890 Scale Mode: Small noise peaks clipped

Volume Inj. : 2 µl
 Signal #1 Phase : ZB-MR1 Signal #2 Phase: ZB-MR2
 Signal #1 Info : 30Mx0.32mmx 0.50µ Signal #2 Info : 30M x 0.32mm x 0.25µm

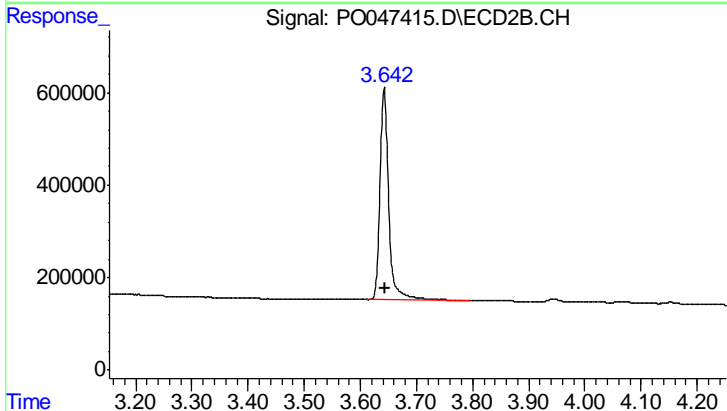




#1 Tetrachloro-m-xylene

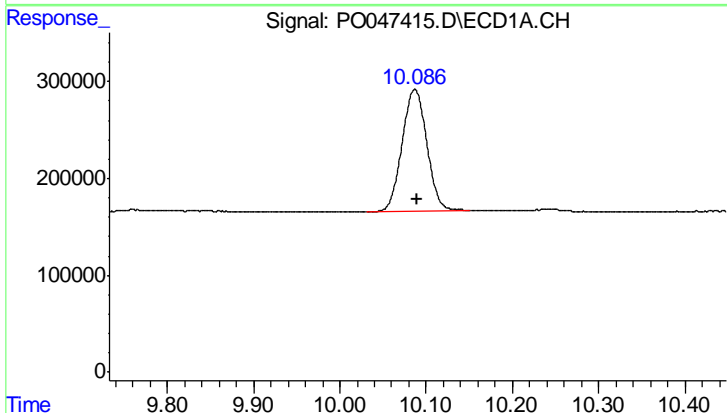
R.T.: 4.395 min
 Delta R.T.: -0.002 min
 Response: 4217607
 Conc: 20.89 ng/ml

Instrument :
 ECD_O
 ClientSampleId :
 TP-15-S



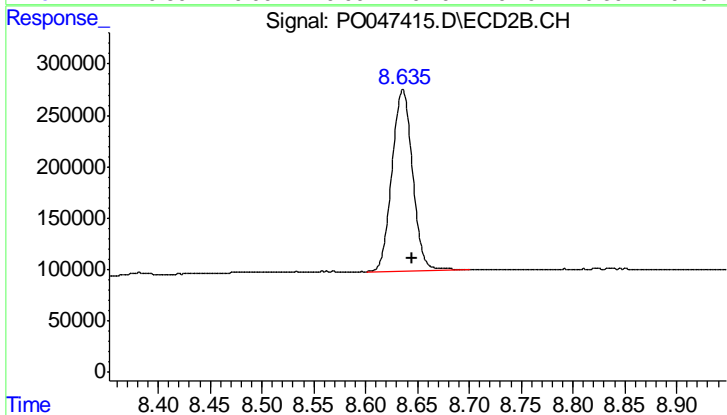
#1 Tetrachloro-m-xylene

R.T.: 3.642 min
 Delta R.T.: -0.003 min
 Response: 4997974
 Conc: 20.34 ng/ml



#2 Decachlorobiphenyl

R.T.: 10.087 min
 Delta R.T.: -0.003 min
 Response: 2504377
 Conc: 15.35 ng/ml



#2 Decachlorobiphenyl

R.T.: 8.636 min
 Delta R.T.: -0.009 min
 Response: 2420674
 Conc: 15.40 ng/ml