

Data Path : Z:\pestpcbsrv\HPCHEM1\ECD_0\Data\P0073020\
 Data File : P0070205.D
 Signal(s) : Signal #1: ECD1A.CH Signal #2: ECD2B.CH
 Acq On : 30 Jul 2020 12:12
 Operator : DD\AJ
 Sample : PB130618BL
 Misc :
 ALS Vial : 8 Sample Multiplier: 1

Instrument :
 ECD_0
 ClientSampleId :
 PB130618BL

Integration File signal 1: autoint1.e
 Integration File signal 2: autoint2.e
 Quant Time: Jul 31 06:33:52 2020
 Quant Method : Z:\pestpcbsrv\HPCHEM1\ECD_0\methods\P0073020.M
 Quant Title : GC EXTRACTABLES
 QLast Update : Thu Jul 30 06:42:22 2020
 Response via : Initial Calibration
 Integrator: ChemStation 6890 Scale Mode: Small noise peaks clipped

Volume Inj. : 2 µl
 Signal #1 Phase : ZB-MR1 Signal #2 Phase: ZB-MR2
 Signal #1 Info : 30Mx0.32mmx 0.50µ Signal #2 Info : 30M x 0.32mm x 0.25µm

Compound	RT#1	RT#2	Resp#1	Resp#2	ng/ml	ng/ml

System Monitoring Compounds						
1) SA Tetrachlo...	4.390	3.562	925839	786149	20.059	18.814
2) SA Decachlor...	10.024	8.759	1401170	1299839	21.671	20.991
Target Compounds						
9) L2 AR-1221-2	4.734	3.902	10878	13138	27.580	31.489

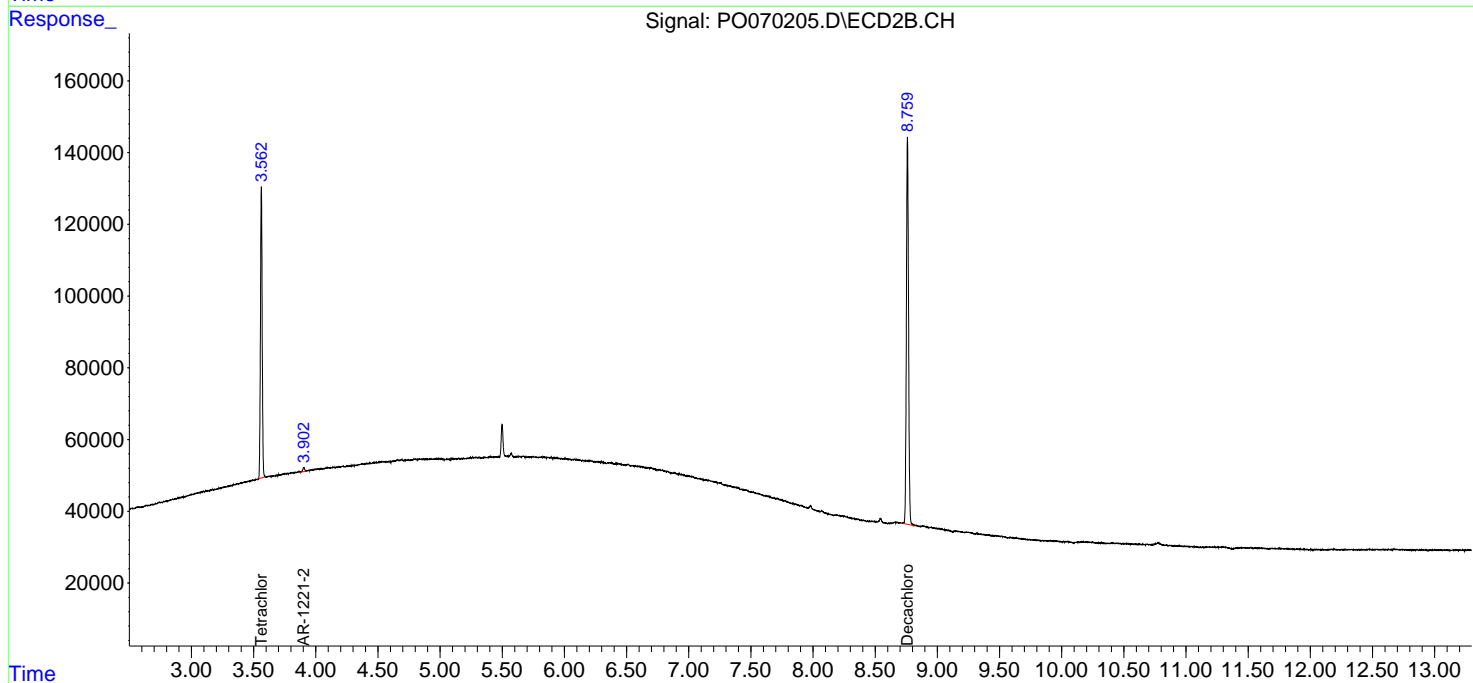
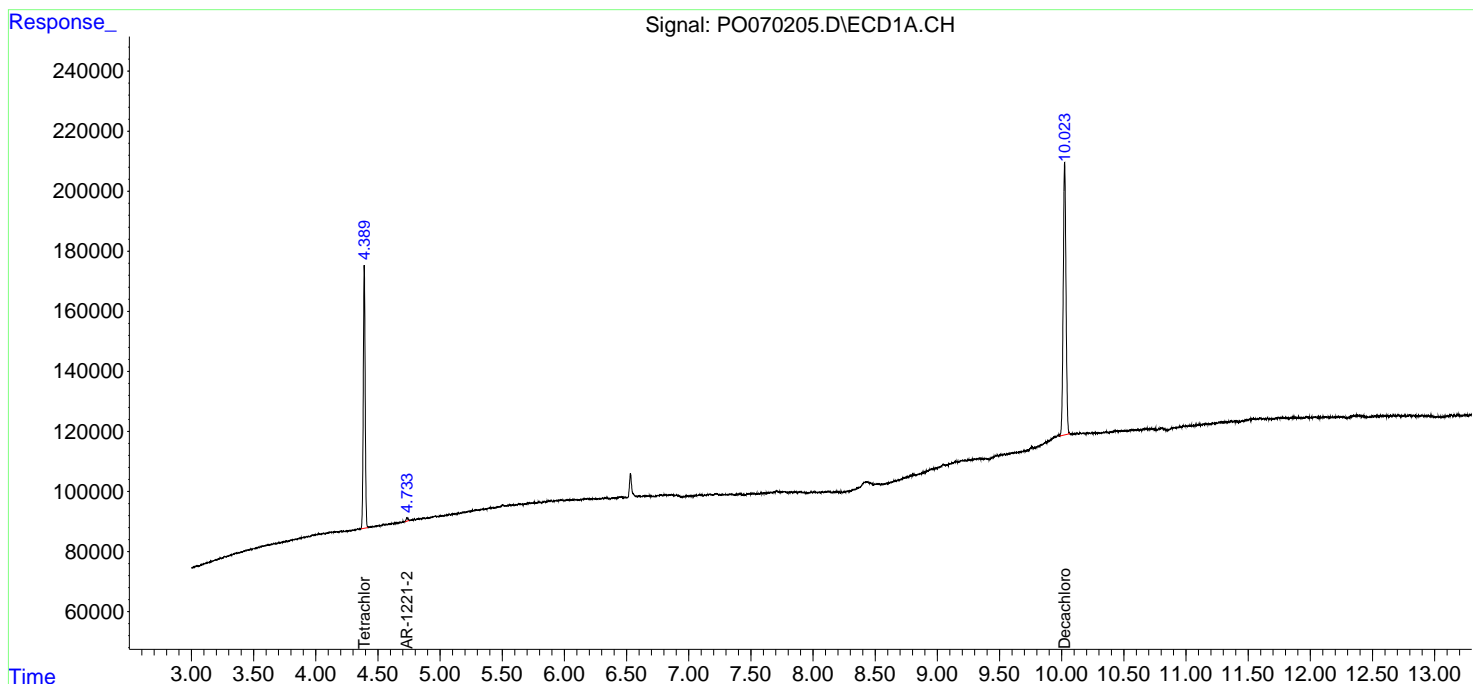
(f)=RT Delta > 1/2 Window (#)=Amounts differ by > 25% (m)=manual int.

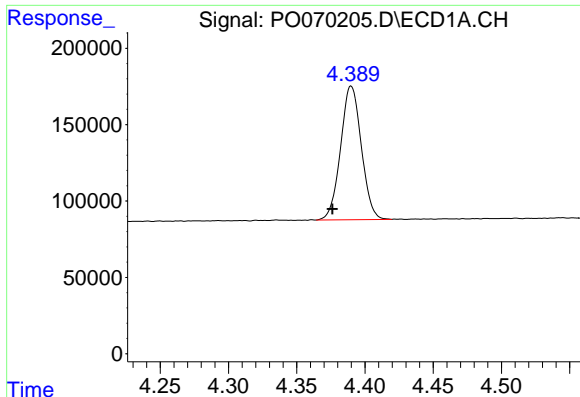
Data Path : Z:\pestpcbsrv\HPCHEM1\ECD_0\Data\P0073020\
 Data File : P0070205.D
 Signal(s) : Signal #1: ECD1A.CH Signal #2: ECD2B.CH
 Acq On : 30 Jul 2020 12:12
 Operator : DD\AJ
 Sample : PB130618BL
 Misc :
 ALS Vial : 8 Sample Multiplier: 1

Instrument :
 ECD_O
 ClientSampled :
 PB130618BL

Integration File signal 1: autoint1.e
 Integration File signal 2: autoint2.e
 Quant Time: Jul 31 06:33:52 2020
 Quant Method : Z:\pestpcbsrv\HPCHEM1\ECD_0\methods\P0073020.M
 Quant Title : GC EXTRACTABLES
 QLast Update : Thu Jul 30 06:42:22 2020
 Response via : Initial Calibration
 Integrator: ChemStation 6890 Scale Mode: Small noise peaks clipped

Volume Inj. : 2 µl
 Signal #1 Phase : ZB-MR1 Signal #2 Phase: ZB-MR2
 Signal #1 Info : 30Mx0.32mmx 0.50µ Signal #2 Info : 30M x 0.32mm x 0.25µm

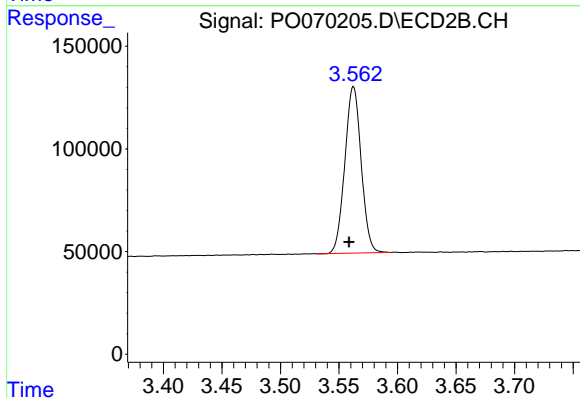




#1 Tetrachloro-m-xylene

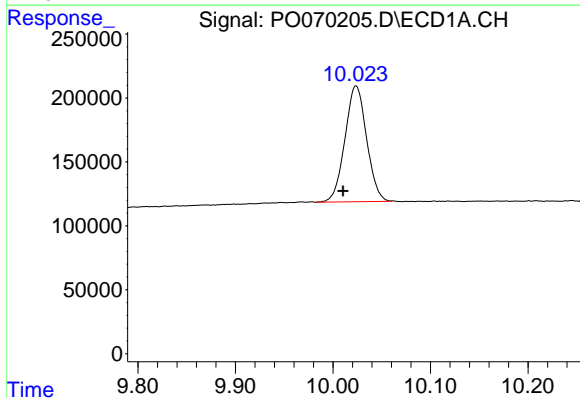
R.T.: 4.390 min
 Delta R.T.: 0.014 min
 Response: 925839
 Conc: 20.06 ng/ml

Instrument :
 ECD_O
 ClientSampleId :
 PB130618BL



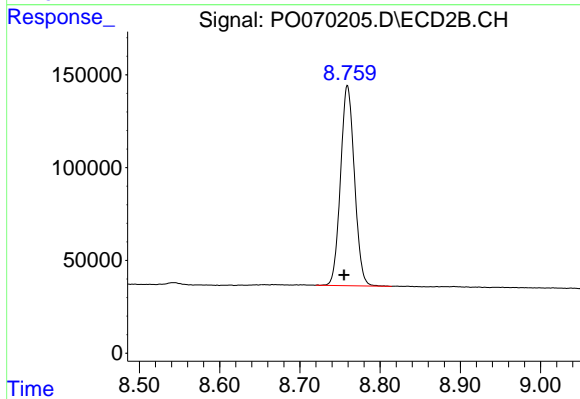
#1 Tetrachloro-m-xylene

R.T.: 3.562 min
 Delta R.T.: 0.004 min
 Response: 786149
 Conc: 18.81 ng/ml



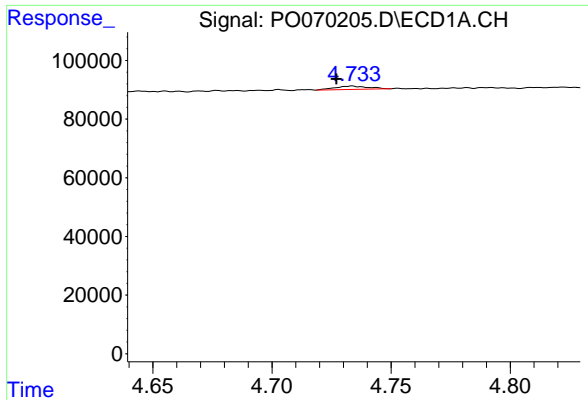
#2 Decachlorobiphenyl

R.T.: 10.024 min
 Delta R.T.: 0.013 min
 Response: 1401170
 Conc: 21.67 ng/ml



#2 Decachlorobiphenyl

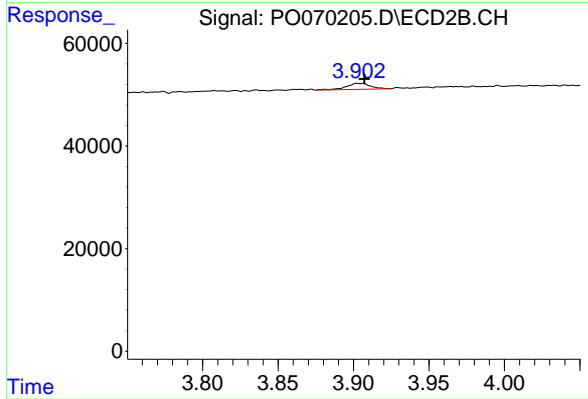
R.T.: 8.759 min
 Delta R.T.: 0.004 min
 Response: 1299839
 Conc: 20.99 ng/ml



#9 AR-1221-2

R.T.: 4.734 min
Delta R.T.: 0.007 min
Response: 10878
Conc: 27.58 ng/ml

Instrument :
ECD_O
ClientSampleId :
PB130618BL



#9 AR-1221-2

R.T.: 3.902 min
Delta R.T.: -0.005 min
Response: 13138
Conc: 31.49 ng/ml