

Data Path : Z:\pestpcbsrv\HPCHEM1\ECD_0\Data\P0073020\
 Data File : P0070224.D
 Signal(s) : Signal #1: ECD1A.CH Signal #2: ECD2B.CH
 Acq On : 30 Jul 2020 17:41
 Operator : DD\AJ
 Sample : L3457-01
 Misc :
 ALS Vial : 25 Sample Multiplier: 1

Instrument :
 ECD_0
 ClientSampleId :
 SHB-MOTOR-ROOM

Integration File signal 1: autoint1.e
 Integration File signal 2: autoint2.e
 Quant Time: Jul 31 06:42:13 2020
 Quant Method : Z:\pestpcbsrv\HPCHEM1\ECD_0\methods\P0073020.M
 Quant Title : GC EXTRACTABLES
 QLast Update : Thu Jul 30 06:42:22 2020
 Response via : Initial Calibration
 Integrator: ChemStation 6890 Scale Mode: Small noise peaks clipped

Volume Inj. : 2 µl
 Signal #1 Phase : ZB-MR1 Signal #2 Phase: ZB-MR2
 Signal #1 Info : 30Mx0.32mmx 0.50µ Signal #2 Info : 30M x 0.32mm x 0.25µm

Compound	RT#1	RT#2	Resp#1	Resp#2	ng/ml	ng/ml
System Monitoring Compounds						
1) SA Tetrachlo...	4.376	3.560	721054	698054	15.622	16.706
2) SA Decachlor...	10.012	8.756	949113	832015	14.679	13.436
Target Compounds						
3) L1 AR-1016-1	0.000	4.808f	0	20647	N.D.	10.725 #
4) L1 AR-1016-2	0.000	4.808	0	20647	N.D.	7.639 #
5) L1 AR-1016-3	5.763	0.000	21576	0	11.651	N.D. #
6) L1 AR-1016-4	0.000	5.051	0	93503	N.D.	75.385 #
7) L1 AR-1016-5	6.182	5.271	49306	51613	31.692	33.706
12) L3 AR-1232-2	0.000	4.808	0	20647	N.D.	17.352 #
14) L3 AR-1232-4	0.000	5.091	0	39766	N.D.	75.298 #
15) L3 AR-1232-5	6.015	5.271	37265	51613	74.948	82.511
16) L4 AR-1242-1	0.000	4.808f	0	20647	N.D.	13.248 #
17) L4 AR-1242-2	0.000	4.808	0	20647	N.D.	9.560 #
18) L4 AR-1242-3	5.763	0.000	21576	0	14.101	N.D. #
19) L4 AR-1242-4	0.000	5.091	0	39766	N.D.	37.061 #
20) L4 AR-1242-5	6.645	5.647	51433	151704	32.909	93.502 #
21) L5 AR-1248-1	0.000	4.808f	0	20647	N.D.	17.193 #
22) L5 AR-1248-2	5.971	5.051	78739	93503	44.420	56.737 #
23) L5 AR-1248-3	6.182	5.091	49306	39766	22.807	26.171
24) L5 AR-1248-4	6.605	5.271	34783	51613	12.212	25.835 #
25) L5 AR-1248-5	6.645	0.000	51433	0	19.724	N.D. #
26) L6 AR-1254-1	6.574	5.647	152257	151704	59.022	46.644
27) L6 AR-1254-2	6.804	5.807	152454	98873	35.587	34.491
28) L6 AR-1254-3	7.178	6.218	86326	159022	19.274	34.584 #
29) L6 AR-1254-4	7.474	6.458	182358	81006	45.024	23.996 #
30) L6 AR-1254-5	7.894	6.880	301765	206750	77.933	46.149 #
31) L7 AR-1260-1	7.342	6.355	115649	152770	36.488	48.551 #
32) L7 AR-1260-2	7.608	6.554	193478	140932	43.219	33.926
33) L7 AR-1260-3	7.966	6.703	100901	129058	26.983	36.590 #
34) L7 AR-1260-4	8.191	7.179	103089	87861	29.223	28.853
35) L7 AR-1260-5	8.506	7.430	245059	232780	29.299	28.684
36) L8 AR-1262-1	7.966	6.880	100901	206750	17.773	87.010 #
37) L8 AR-1262-2	8.506	7.430	245059	232780	25.106	26.195
38) L8 AR-1262-3	8.796f	7.717	147219	201052	33.924	54.698 #
39) L8 AR-1262-4	8.856	7.771	96086	140406	20.557	21.879
40) L8 AR-1262-5	9.413	8.269	27975	36614	8.974	11.682 #
41) L9 AR-1268-1	8.796f	7.717	147219	201052	12.418	18.793 #
42) L9 AR-1268-2	8.856	7.771	96086	140406	9.465	14.931 #
43) L9 AR-1268-3	9.039	0.000	29064	0	3.385	N.D. #
44) L9 AR-1268-4	9.413	8.269	27975	36614	7.921	10.493 #
45) L9 AR-1268-5	9.743	0.000	24538	0	0.958	N.D. #

Data Path : Z:\pestpcbsrv\HPCHEM1\ECD_0\Data\P0073020\
Data File : P0070224.D
Signal(s) : Signal #1: ECD1A.CH Signal #2: ECD2B.CH
Acq On : 30 Jul 2020 17:41
Operator : DD\AJ
Sample : L3457-01
Misc :
ALS Vial : 25 Sample Multiplier: 1

Instrument :
ECD_O
ClientSampleId :
SHB-MOTOR-ROOM

Integration File signal 1: autoint1.e
Integration File signal 2: autoint2.e
Quant Time: Jul 31 06:42:13 2020
Quant Method : Z:\pestpcbsrv\HPCHEM1\ECD_0\methods\P0073020.M
Quant Title : GC EXTRACTABLES
QLast Update : Thu Jul 30 06:42:22 2020
Response via : Initial Calibration
Integrator: ChemStation 6890 Scale Mode: Small noise peaks clipped

Volume Inj. : 2 µl
Signal #1 Phase : ZB-MR1 Signal #2 Phase: ZB-MR2
Signal #1 Info : 30Mx0.32mmx 0.50µ Signal #2 Info : 30M x 0.32mm x 0.25µm

Compound	RT#1	RT#2	Resp#1	Resp#2	ng/ml	ng/ml
----------	------	------	--------	--------	-------	-------

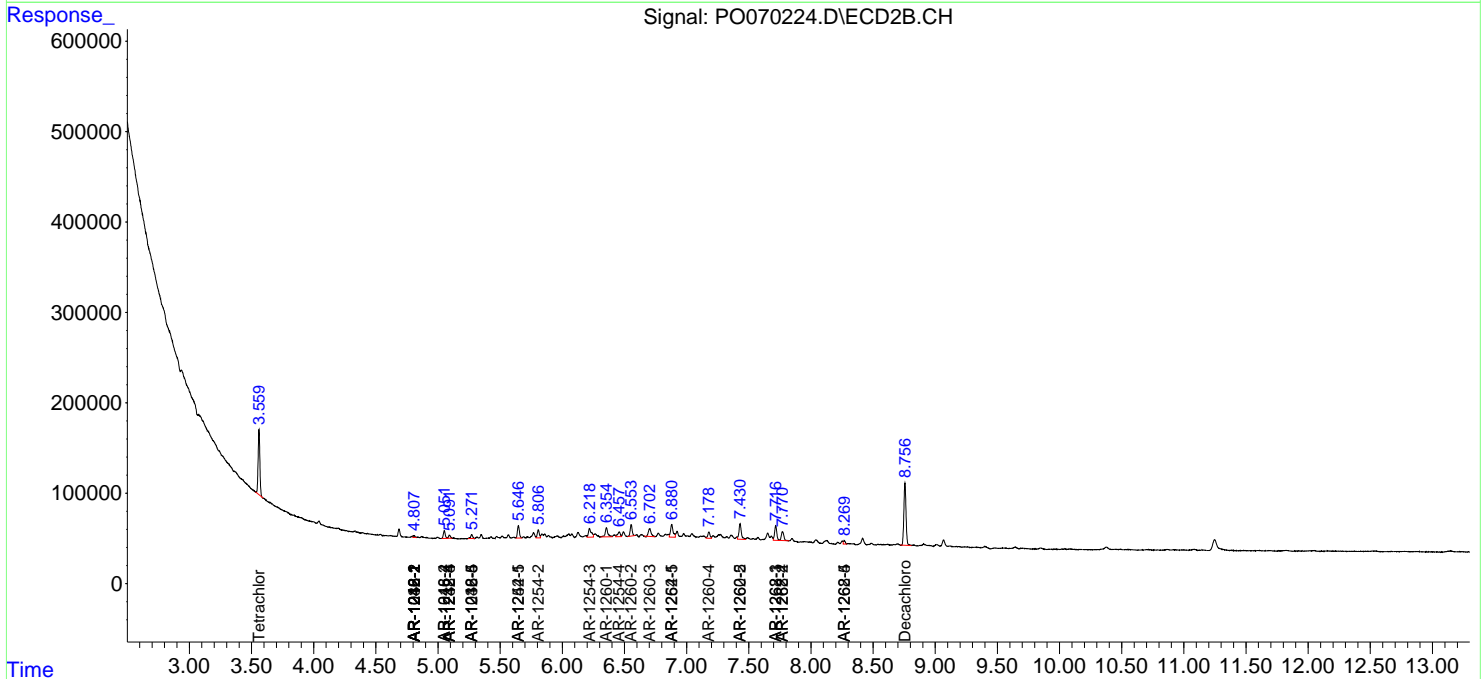
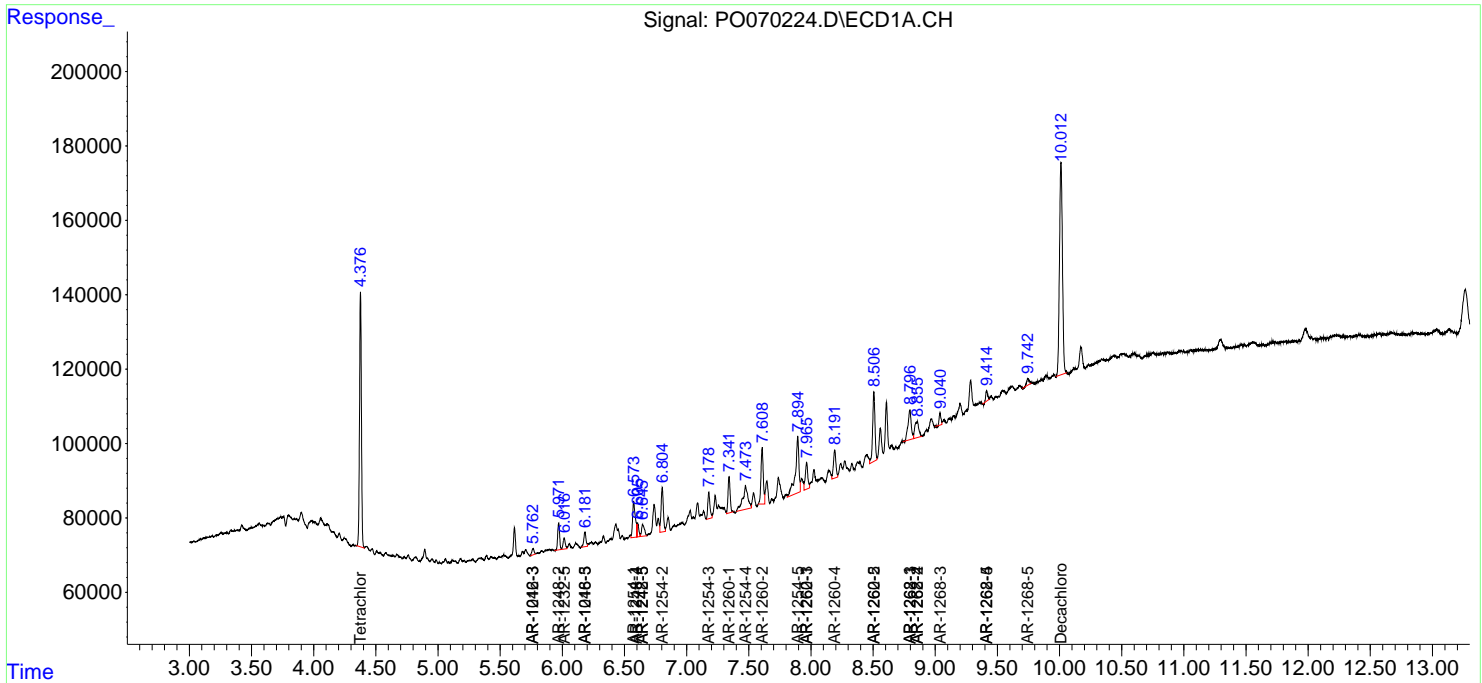
(f)=RT Delta > 1/2 Window (#)=Amounts differ by > 25% (m)=manual int.

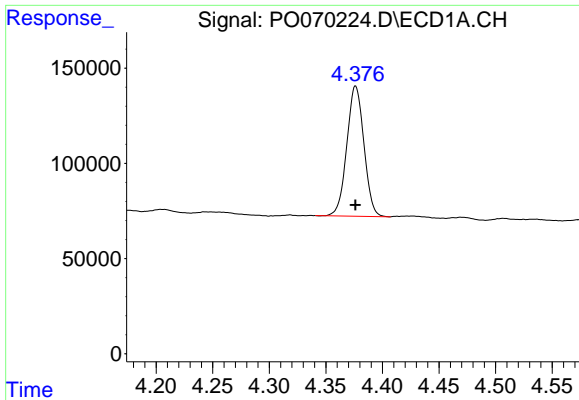
Data Path : Z:\pestpcbsrv\HPCHEM1\ECD_O\Data\P0073020\
 Data File : P0070224.D
 Signal(s) : Signal #1: ECD1A.CH Signal #2: ECD2B.CH
 Acq On : 30 Jul 2020 17:41
 Operator : DD\AJ
 Sample : L3457-01
 Misc :
 ALS Vial : 25 Sample Multiplier: 1

Instrument :
 ECD_O
 ClientSampleId :
 SHB-MOTOR-ROOM

Integration File signal 1: autoint1.e
 Integration File signal 2: autoint2.e
 Quant Time: Jul 31 06:42:13 2020
 Quant Method : Z:\pestpcbsrv\HPCHEM1\ECD_O\methods\P0073020.M
 Quant Title : GC EXTRACTABLES
 QLast Update : Thu Jul 30 06:42:22 2020
 Response via : Initial Calibration
 Integrator: ChemStation 6890 Scale Mode: Small noise peaks clipped

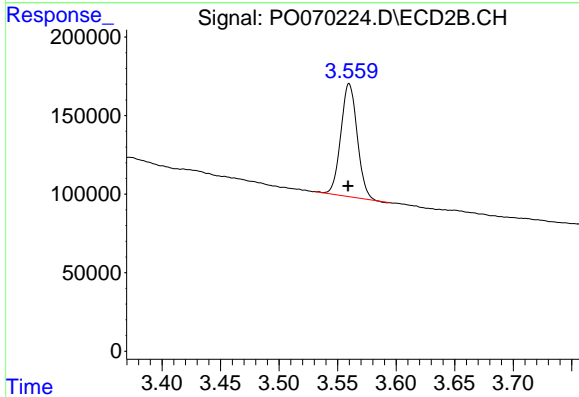
Volume Inj. : 2 µl
 Signal #1 Phase : ZB-MR1 Signal #2 Phase: ZB-MR2
 Signal #1 Info : 30Mx0.32mmx 0.50µ Signal #2 Info : 30M x 0.32mm x 0.25µm



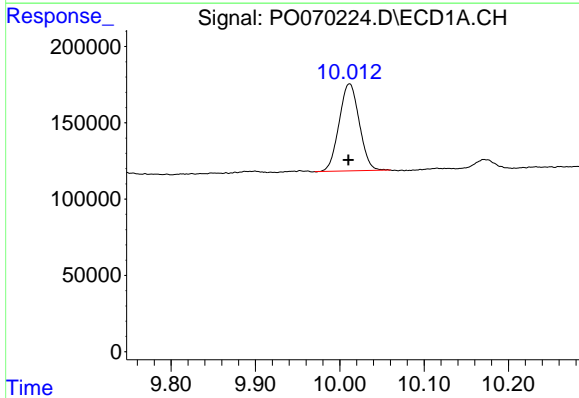


#1 Tetrachloro-m-xylene
 R.T.: 4.376 min
 Delta R.T.: 0.000 min
 Response: 721054
 Conc: 15.62 ng/ml

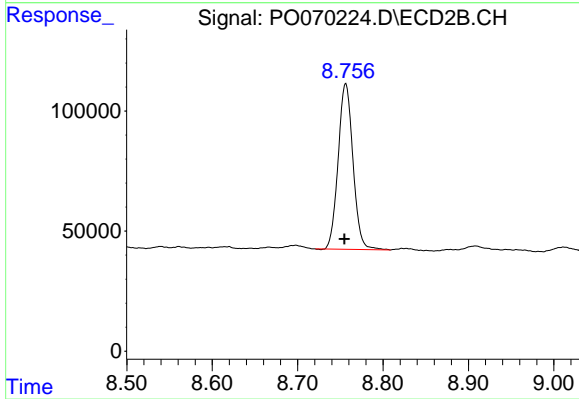
Instrument :
 ECD_O
 ClientSampleId :
 SHB-MOTOR-ROOM



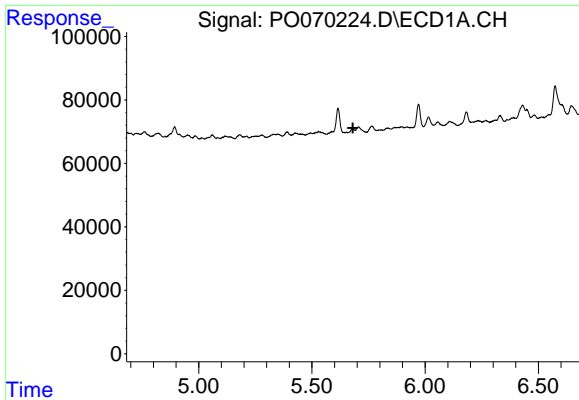
#1 Tetrachloro-m-xylene
 R.T.: 3.560 min
 Delta R.T.: 0.001 min
 Response: 698054
 Conc: 16.71 ng/ml



#2 Decachlorobiphenyl
 R.T.: 10.012 min
 Delta R.T.: 0.001 min
 Response: 949113
 Conc: 14.68 ng/ml



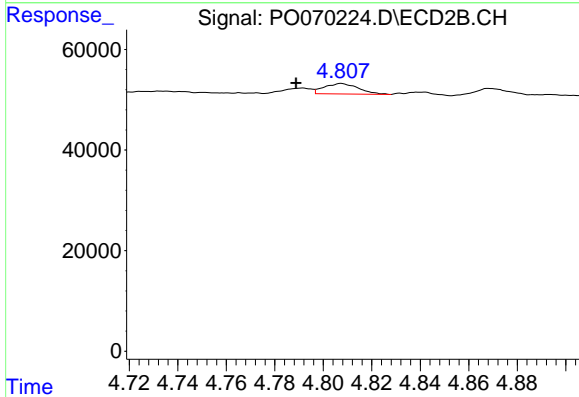
#2 Decachlorobiphenyl
 R.T.: 8.756 min
 Delta R.T.: 0.002 min
 Response: 832015
 Conc: 13.44 ng/ml



#3 AR-1016-1

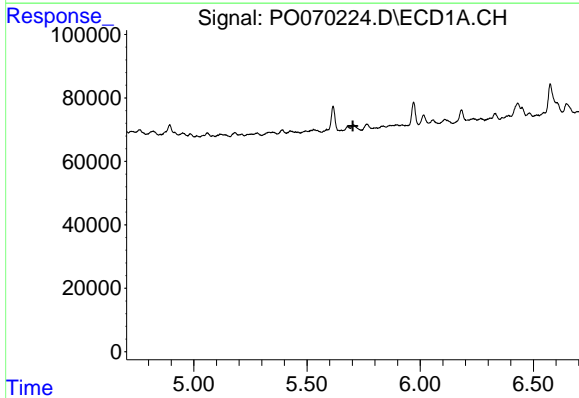
R.T.: 0.000 min
 Exp R.T.: 5.681 min
 Response: 0
 Conc: N.D.

Instrument :
 ECD_O
 ClientSampleId :
 SHB-MOTOR-ROOM



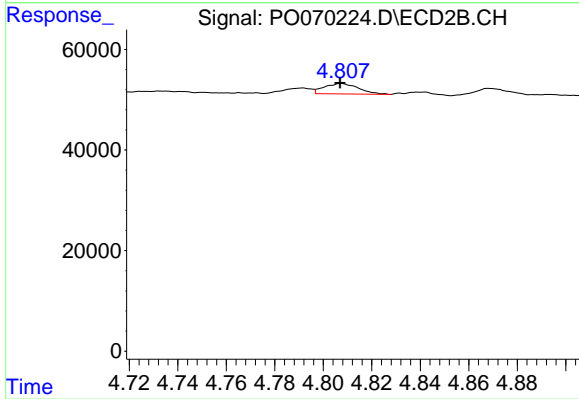
#3 AR-1016-1

R.T.: 4.808 min
 Delta R.T.: 0.019 min
 Response: 20647
 Conc: 10.72 ng/ml



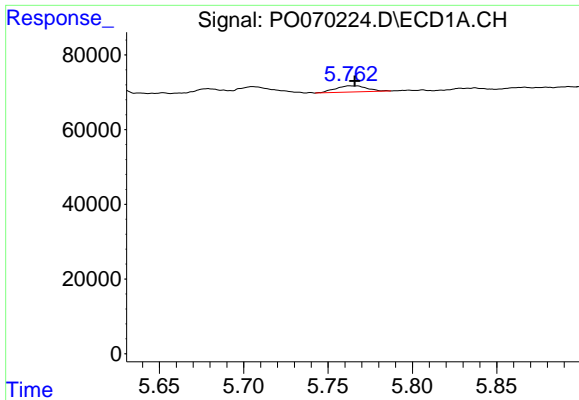
#4 AR-1016-2

R.T.: 0.000 min
 Exp R.T.: 5.702 min
 Response: 0
 Conc: N.D.



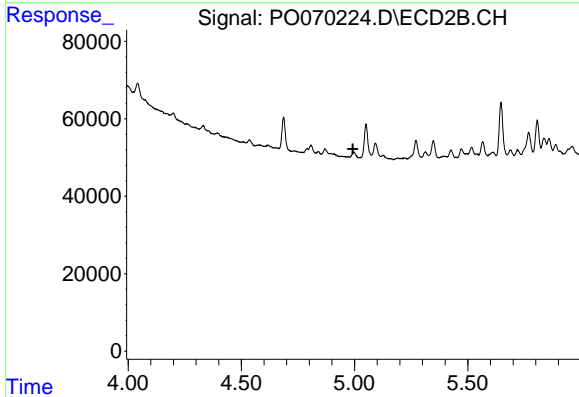
#4 AR-1016-2

R.T.: 4.808 min
 Delta R.T.: 0.000 min
 Response: 20647
 Conc: 7.64 ng/ml

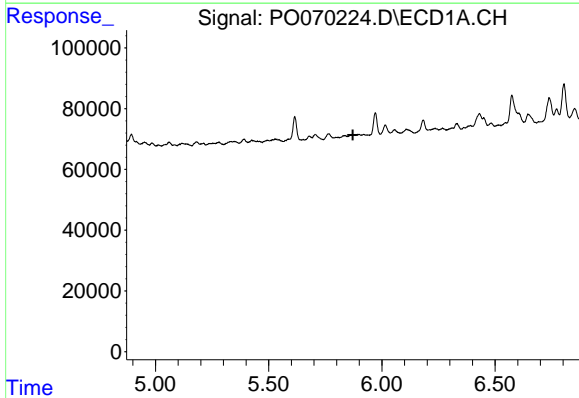


#5 AR-1016-3
 R.T.: 5.763 min
 Delta R.T.: -0.003 min
 Response: 21576
 Conc: 11.65 ng/ml

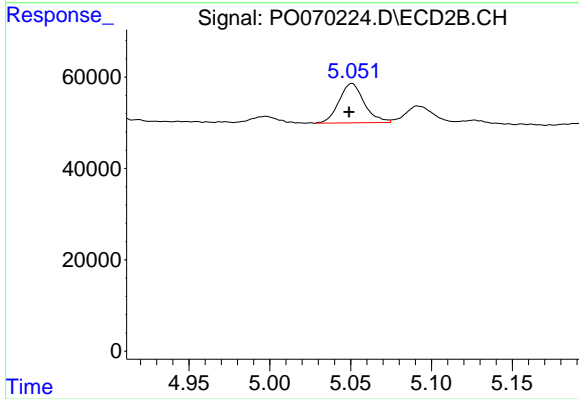
Instrument :
 ECD_O
ClientSampleId :
 SHB-MOTOR-ROOM



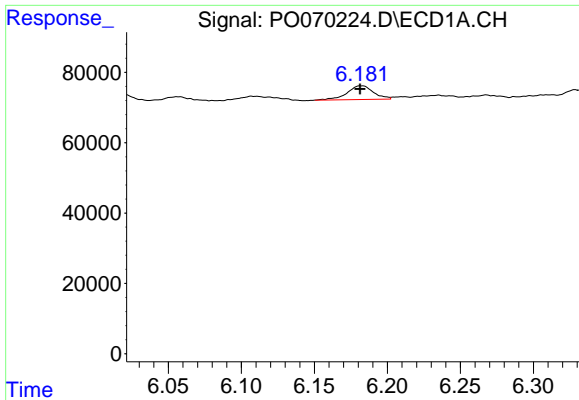
#5 AR-1016-3
 R.T.: 0.000 min
 Exp R.T. : 4.992 min
 Response: 0
 Conc: N.D.



#6 AR-1016-4
 R.T.: 0.000 min
 Exp R.T. : 5.872 min
 Response: 0
 Conc: N.D.



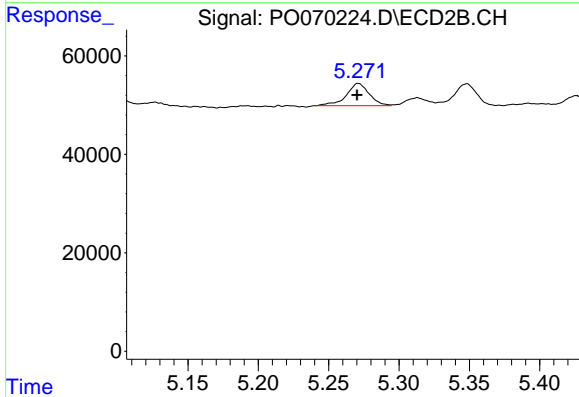
#6 AR-1016-4
 R.T.: 5.051 min
 Delta R.T.: 0.002 min
 Response: 93503
 Conc: 75.38 ng/ml



#7 AR-1016-5

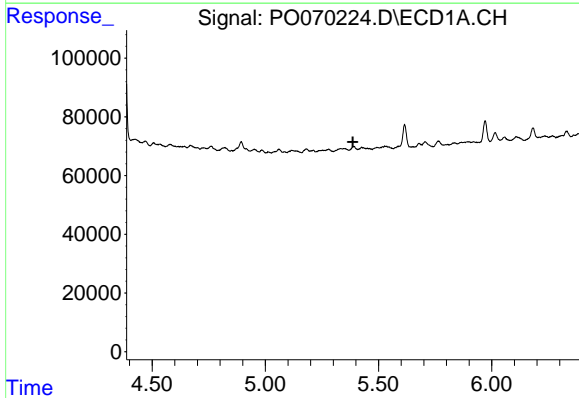
R.T.: 6.182 min
 Delta R.T.: 0.000 min
 Response: 49306
 Conc: 31.69 ng/ml

Instrument :
 ECD_O
 ClientSampleId :
 SHB-MOTOR-ROOM



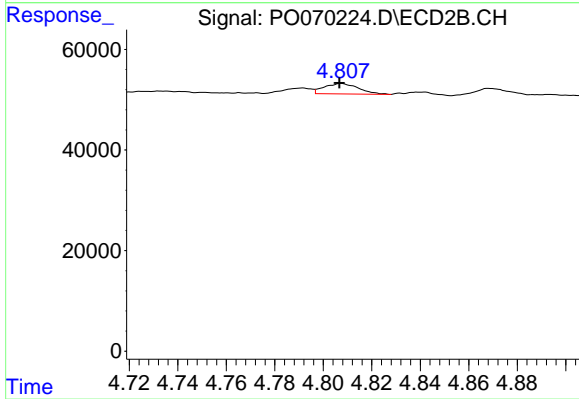
#7 AR-1016-5

R.T.: 5.271 min
 Delta R.T.: 0.000 min
 Response: 51613
 Conc: 33.71 ng/ml



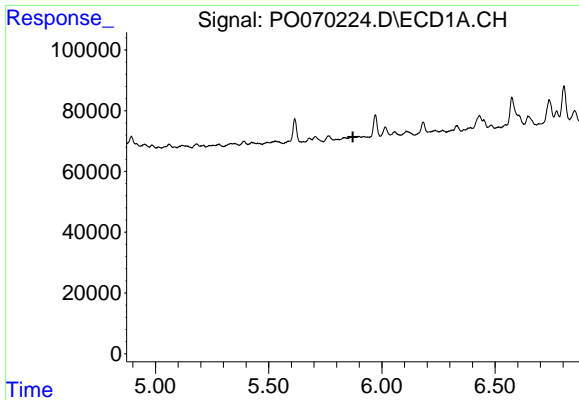
#12 AR-1232-2

R.T.: 0.000 min
 Exp R.T. : 5.387 min
 Response: 0
 Conc: N.D.



#12 AR-1232-2

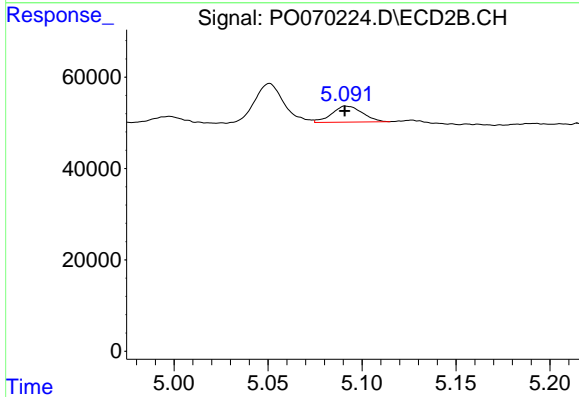
R.T.: 4.808 min
 Delta R.T.: 0.000 min
 Response: 20647
 Conc: 17.35 ng/ml



#14 AR-1232-4

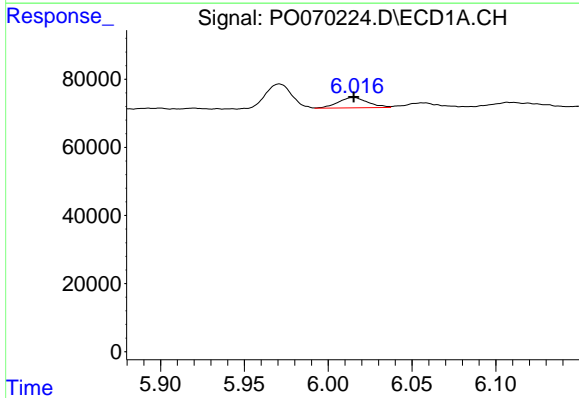
R.T.: 0.000 min
 Exp R.T.: 5.872 min
 Response: 0
 Conc: N.D.

Instrument :
 ECD_O
 ClientSampleId :
 SHB-MOTOR-ROOM



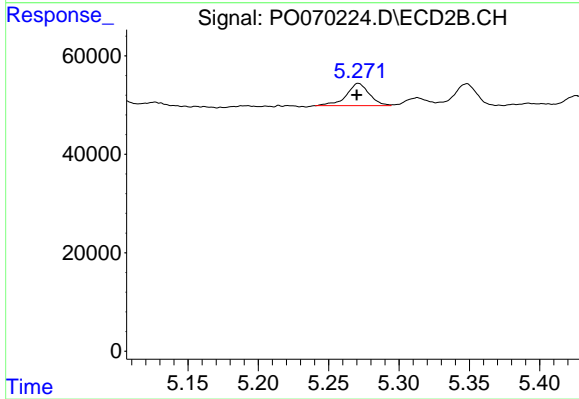
#14 AR-1232-4

R.T.: 5.091 min
 Delta R.T.: 0.000 min
 Response: 39766
 Conc: 75.30 ng/ml



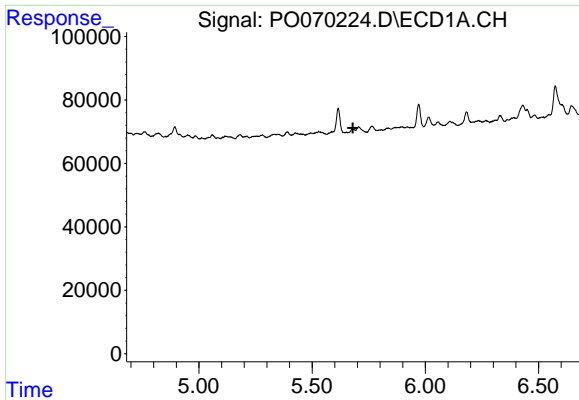
#15 AR-1232-5

R.T.: 6.015 min
 Delta R.T.: 0.000 min
 Response: 37265
 Conc: 74.95 ng/ml



#15 AR-1232-5

R.T.: 5.271 min
 Delta R.T.: 0.001 min
 Response: 51613
 Conc: 82.51 ng/ml

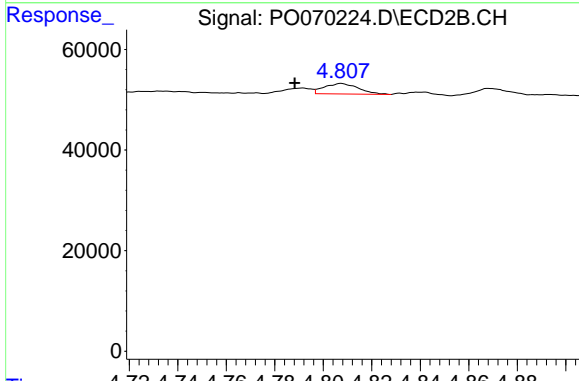


#16 AR-1242-1

R.T.: 0.000 min
 Exp R.T.: 5.680 min
 Response: 0
 Conc: N.D.

Instrument :
 ECD_O
 ClientSampleId :
 SHB-MOTOR-ROOM

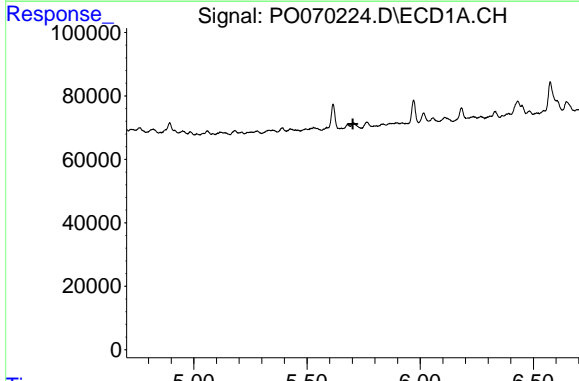
Time 5.00 5.50 6.00 6.50



#16 AR-1242-1

R.T.: 4.808 min
 Delta R.T.: 0.019 min
 Response: 20647
 Conc: 13.25 ng/ml

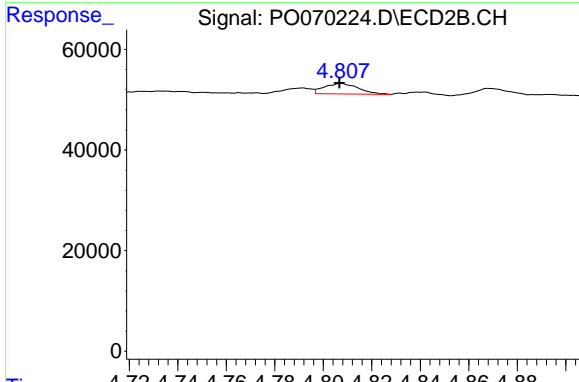
Time 4.72 4.74 4.76 4.78 4.80 4.82 4.84 4.86 4.88



#17 AR-1242-2

R.T.: 0.000 min
 Exp R.T.: 5.702 min
 Response: 0
 Conc: N.D.

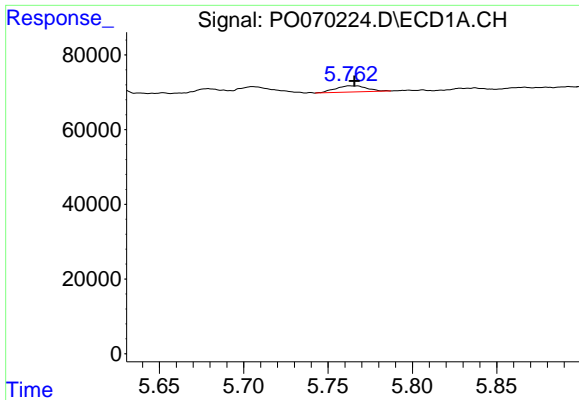
Time 5.00 5.50 6.00 6.50



#17 AR-1242-2

R.T.: 4.808 min
 Delta R.T.: 0.000 min
 Response: 20647
 Conc: 9.56 ng/ml

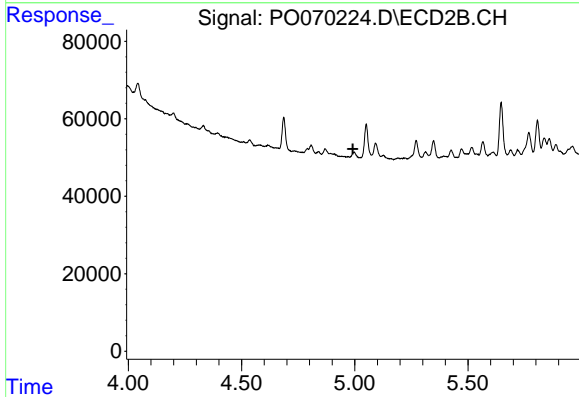
Time 4.72 4.74 4.76 4.78 4.80 4.82 4.84 4.86 4.88



#18 AR-1242-3

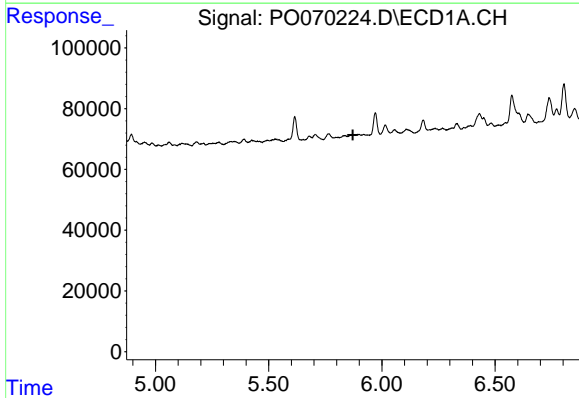
R.T.: 5.763 min
 Delta R.T.: -0.003 min
 Response: 21576
 Conc: 14.10 ng/ml

Instrument :
 ECD_O
 ClientSampleId :
 SHB-MOTOR-ROOM



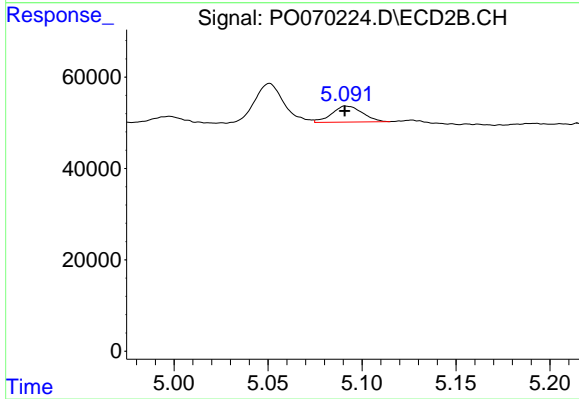
#18 AR-1242-3

R.T.: 0.000 min
 Exp R.T. : 4.992 min
 Response: 0
 Conc: N.D.



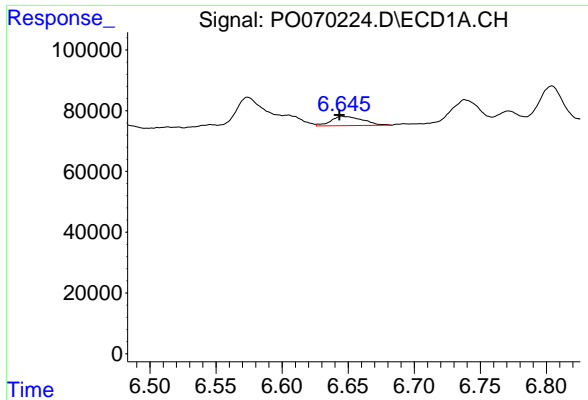
#19 AR-1242-4

R.T.: 0.000 min
 Exp R.T. : 5.872 min
 Response: 0
 Conc: N.D.



#19 AR-1242-4

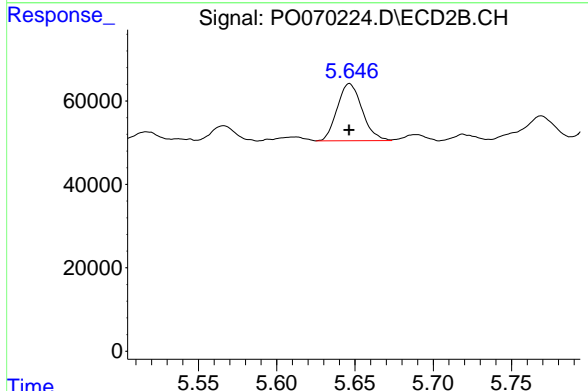
R.T.: 5.091 min
 Delta R.T.: 0.000 min
 Response: 39766
 Conc: 37.06 ng/ml



#20 AR-1242-5

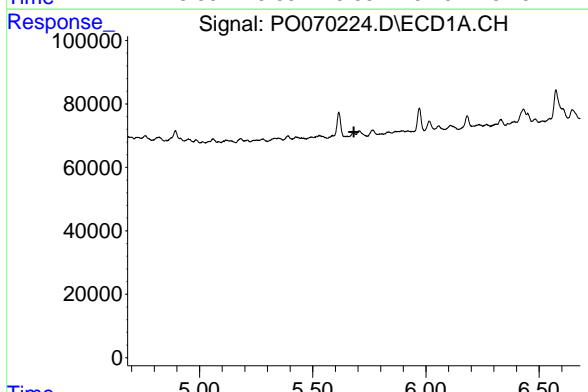
R.T.: 6.645 min
 Delta R.T.: 0.002 min
 Response: 51433
 Conc: 32.91 ng/ml

Instrument :
 ECD_O
ClientSampleId :
 SHB-MOTOR-ROOM



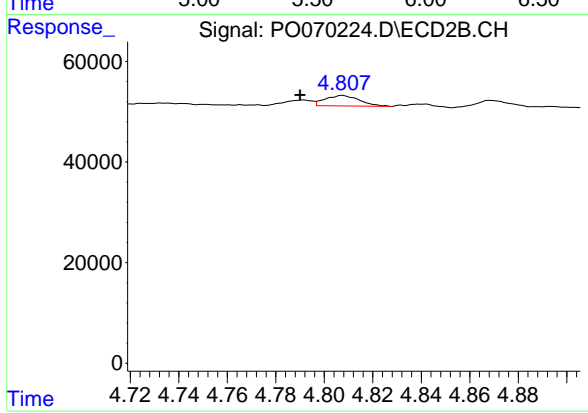
#20 AR-1242-5

R.T.: 5.647 min
 Delta R.T.: 0.000 min
 Response: 151704
 Conc: 93.50 ng/ml



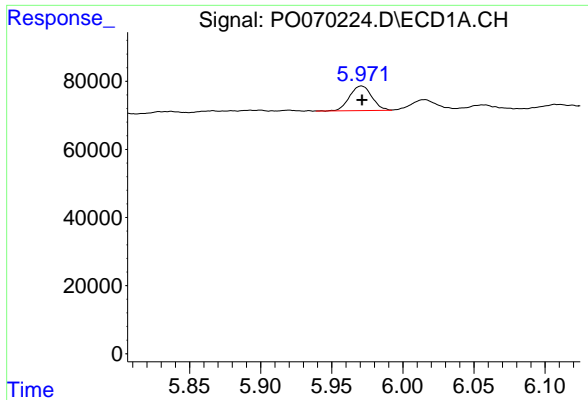
#21 AR-1248-1

R.T.: 0.000 min
 Exp R.T. : 5.682 min
 Response: 0
 Conc: N.D.



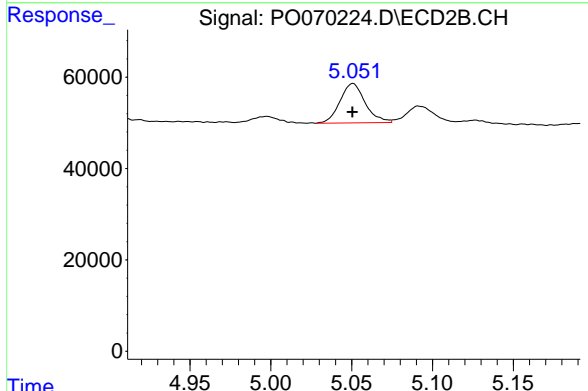
#21 AR-1248-1

R.T.: 4.808 min
 Delta R.T.: 0.017 min
 Response: 20647
 Conc: 17.19 ng/ml

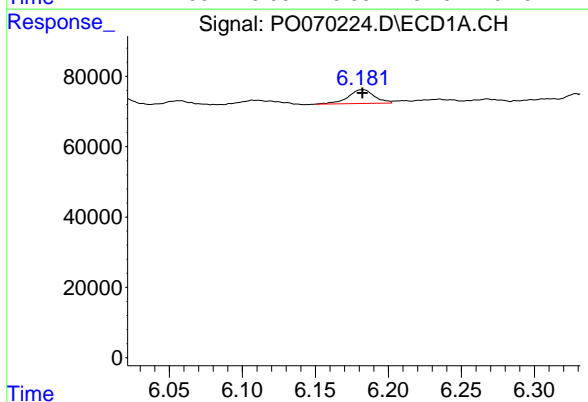


#22 AR-1248-2
 R.T.: 5.971 min
 Delta R.T.: 0.000 min
 Response: 78739
 Conc: 44.42 ng/ml

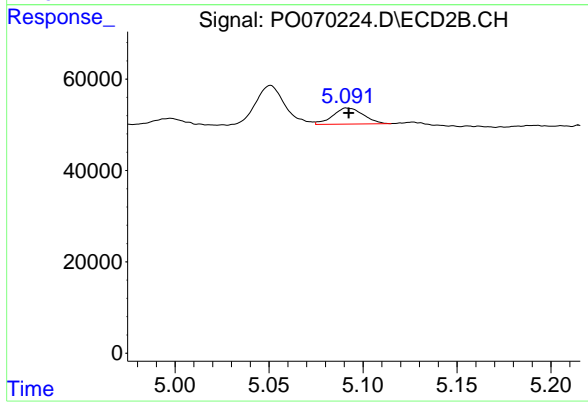
Instrument :
 ECD_O
ClientSampleId :
 SHB-MOTOR-ROOM



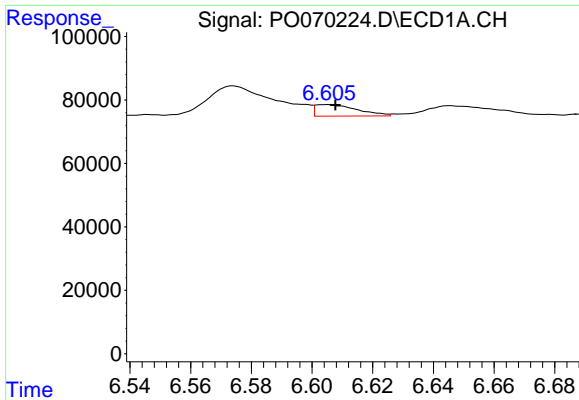
#22 AR-1248-2
 R.T.: 5.051 min
 Delta R.T.: 0.000 min
 Response: 93503
 Conc: 56.74 ng/ml



#23 AR-1248-3
 R.T.: 6.182 min
 Delta R.T.: 0.000 min
 Response: 49306
 Conc: 22.81 ng/ml



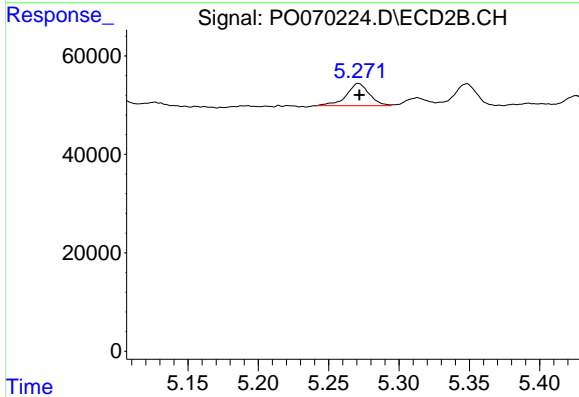
#23 AR-1248-3
 R.T.: 5.091 min
 Delta R.T.: -0.001 min
 Response: 39766
 Conc: 26.17 ng/ml



#24 AR-1248-4

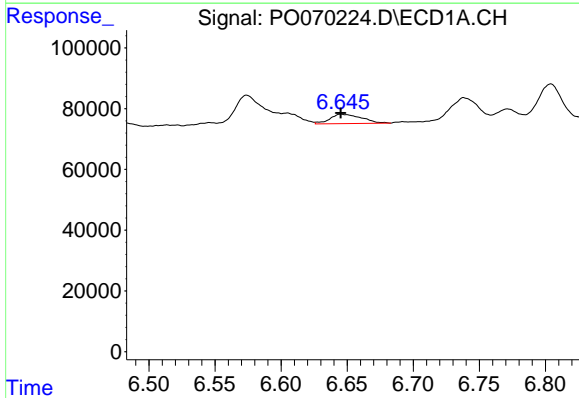
R.T.: 6.605 min
 Delta R.T.: -0.003 min
 Response: 34783
 Conc: 12.21 ng/ml

Instrument :
 ECD_O
 ClientSampleId :
 SHB-MOTOR-ROOM



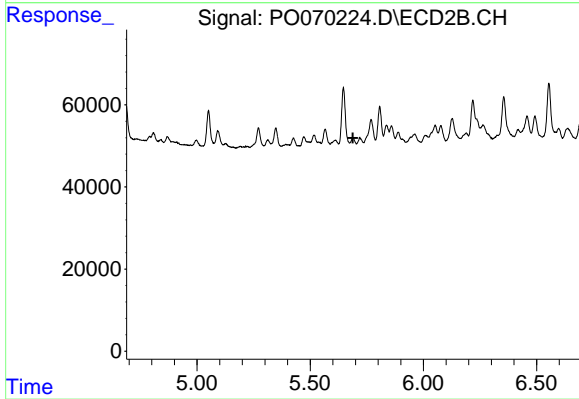
#24 AR-1248-4

R.T.: 5.271 min
 Delta R.T.: 0.000 min
 Response: 51613
 Conc: 25.84 ng/ml



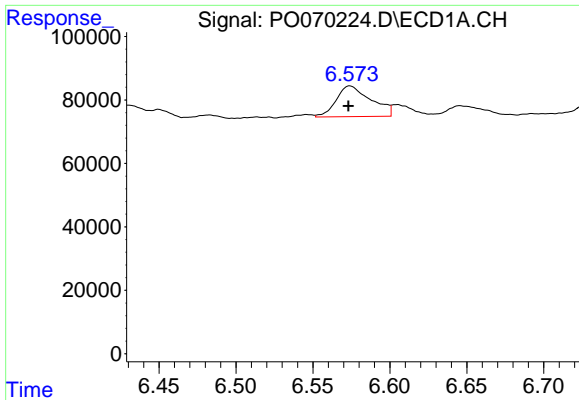
#25 AR-1248-5

R.T.: 6.645 min
 Delta R.T.: 0.000 min
 Response: 51433
 Conc: 19.72 ng/ml



#25 AR-1248-5

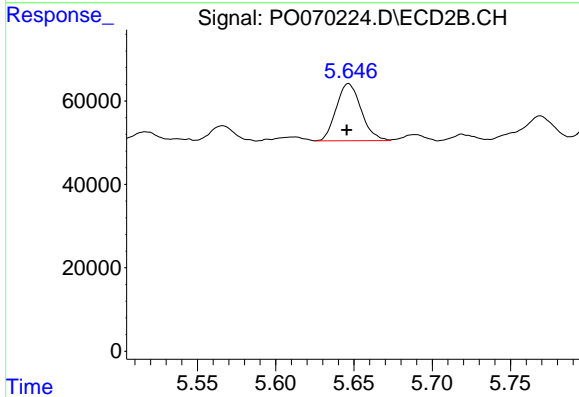
R.T.: 0.000 min
 Exp R.T.: 5.689 min
 Response: 0
 Conc: N.D.



#26 AR-1254-1

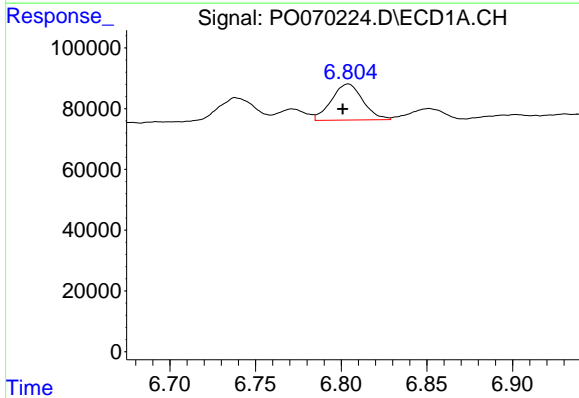
R.T.: 6.574 min
 Delta R.T.: 0.000 min
 Response: 152257
 Conc: 59.02 ng/ml

Instrument :
 ECD_O
 ClientSampleId :
 SHB-MOTOR-ROOM



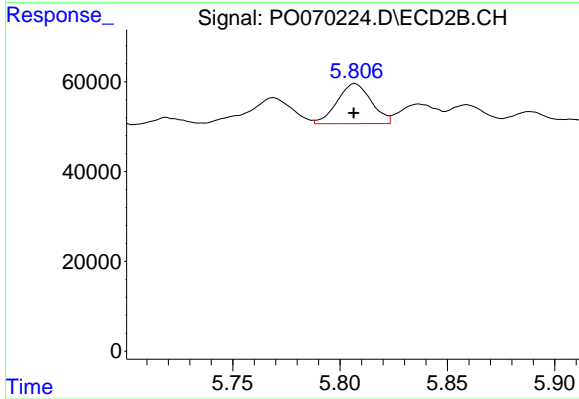
#26 AR-1254-1

R.T.: 5.647 min
 Delta R.T.: 0.001 min
 Response: 151704
 Conc: 46.64 ng/ml



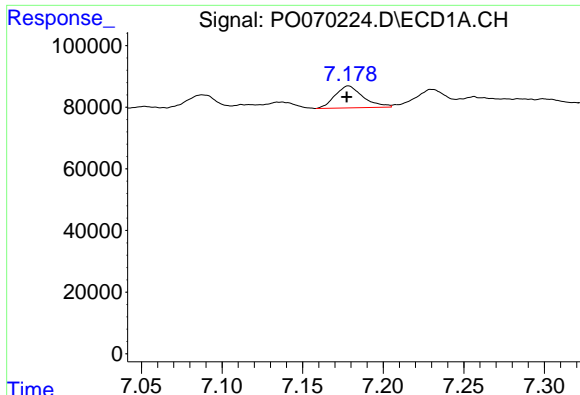
#27 AR-1254-2

R.T.: 6.804 min
 Delta R.T.: 0.003 min
 Response: 152454
 Conc: 35.59 ng/ml



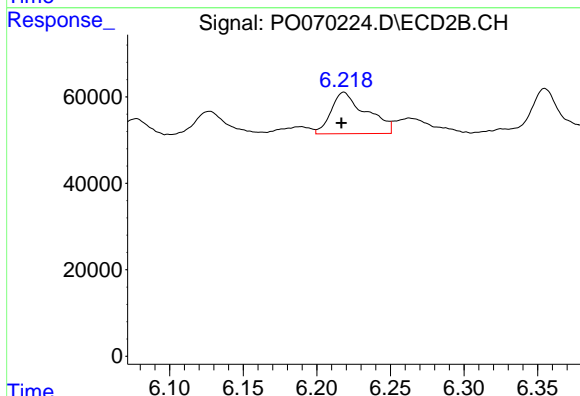
#27 AR-1254-2

R.T.: 5.807 min
 Delta R.T.: 0.000 min
 Response: 98873
 Conc: 34.49 ng/ml

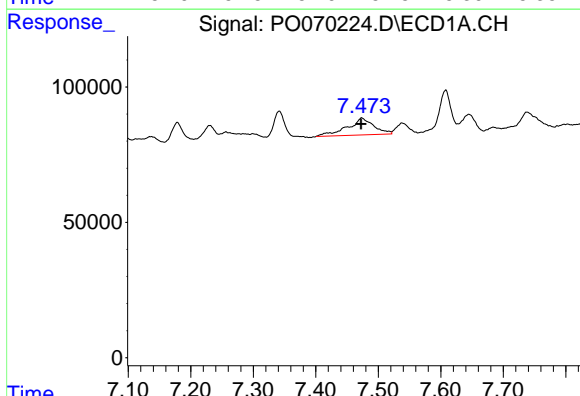


#28 AR-1254-3
 R.T.: 7.178 min
 Delta R.T.: 0.001 min
 Response: 86326
 Conc: 19.27 ng/ml

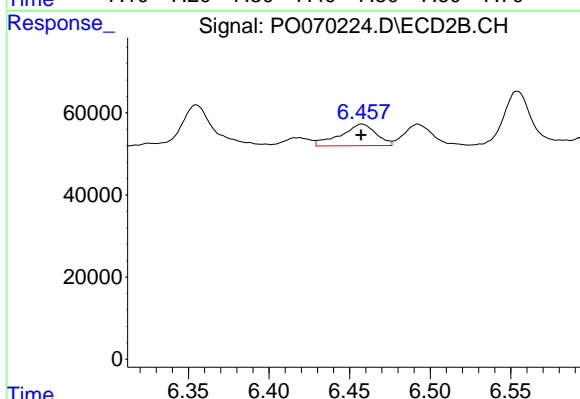
Instrument :
 ECD_O
ClientSampleId :
 SHB-MOTOR-ROOM



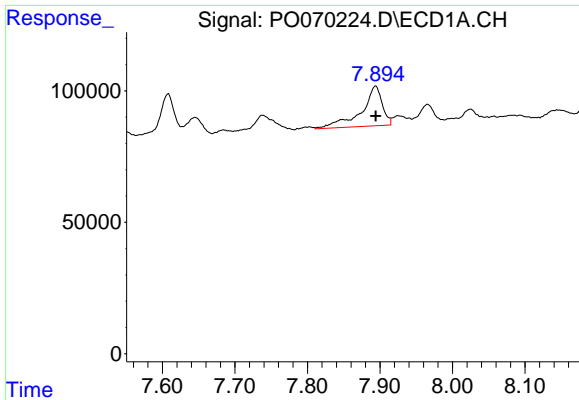
#28 AR-1254-3
 R.T.: 6.218 min
 Delta R.T.: 0.002 min
 Response: 159022
 Conc: 34.58 ng/ml



#29 AR-1254-4
 R.T.: 7.474 min
 Delta R.T.: 0.001 min
 Response: 182358
 Conc: 45.02 ng/ml



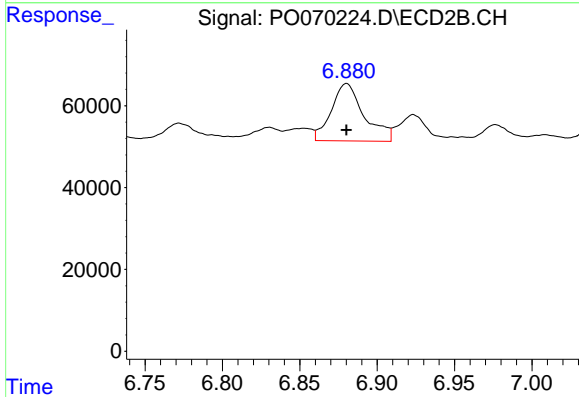
#29 AR-1254-4
 R.T.: 6.458 min
 Delta R.T.: 0.000 min
 Response: 81006
 Conc: 24.00 ng/ml



#30 AR-1254-5

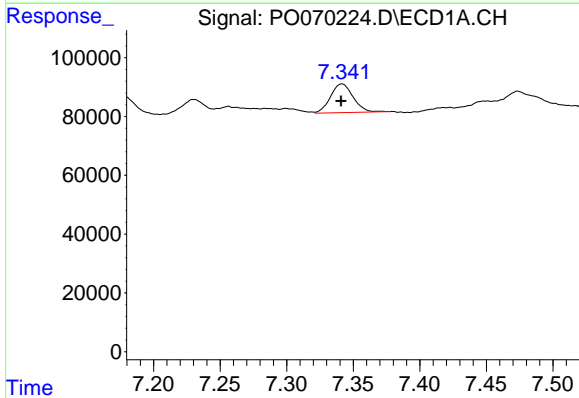
R.T.: 7.894 min
 Delta R.T.: 0.000 min
 Response: 301765
 Conc: 77.93 ng/ml

Instrument :
 ECD_O
 ClientSampleId :
 SHB-MOTOR-ROOM



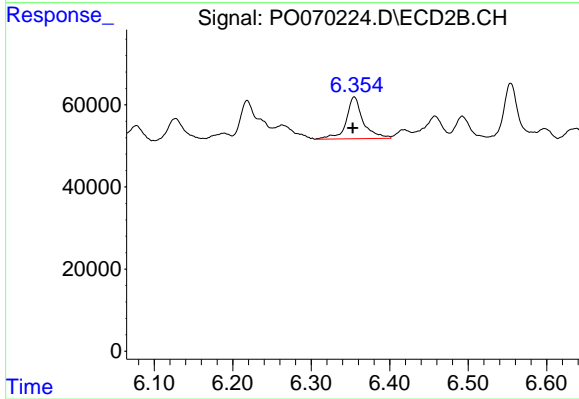
#30 AR-1254-5

R.T.: 6.880 min
 Delta R.T.: 0.000 min
 Response: 206750
 Conc: 46.15 ng/ml



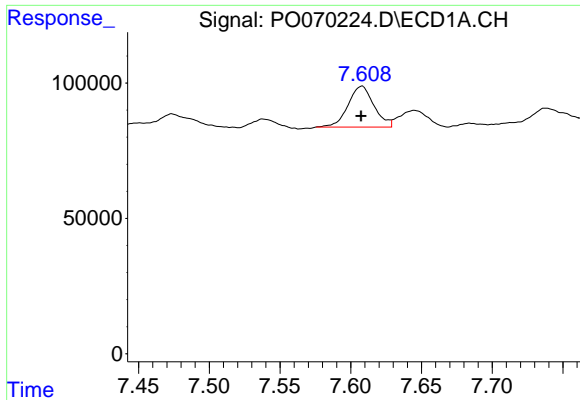
#31 AR-1260-1

R.T.: 7.342 min
 Delta R.T.: 0.000 min
 Response: 115649
 Conc: 36.49 ng/ml



#31 AR-1260-1

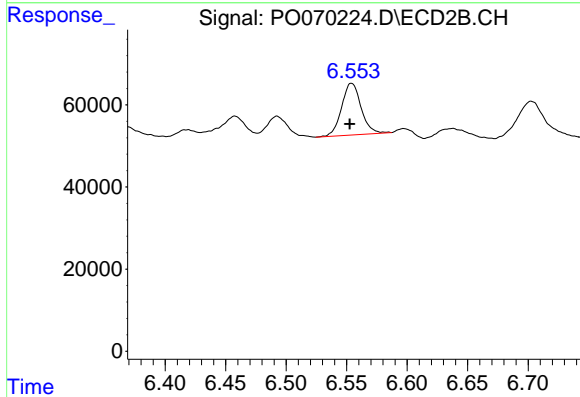
R.T.: 6.355 min
 Delta R.T.: 0.002 min
 Response: 152770
 Conc: 48.55 ng/ml



#32 AR-1260-2

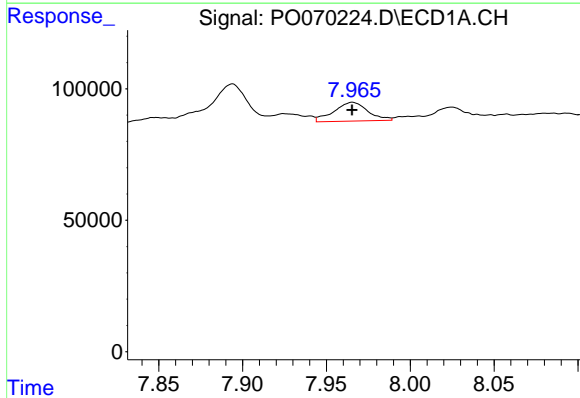
R.T.: 7.608 min
 Delta R.T.: 0.000 min
 Response: 193478
 Conc: 43.22 ng/ml

Instrument :
 ECD_O
 ClientSampleId :
 SHB-MOTOR-ROOM



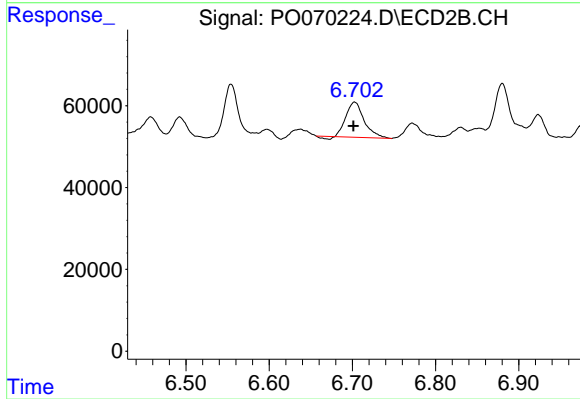
#32 AR-1260-2

R.T.: 6.554 min
 Delta R.T.: 0.001 min
 Response: 140932
 Conc: 33.93 ng/ml



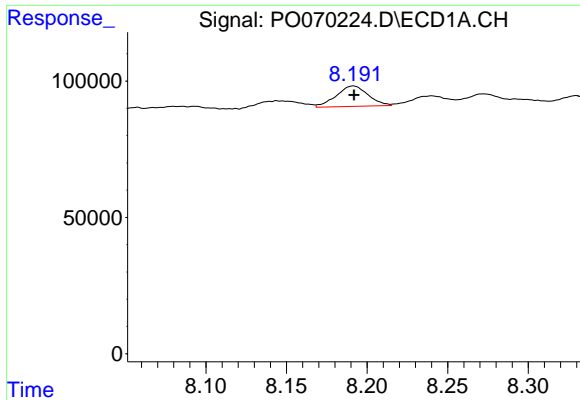
#33 AR-1260-3

R.T.: 7.966 min
 Delta R.T.: 0.000 min
 Response: 100901
 Conc: 26.98 ng/ml



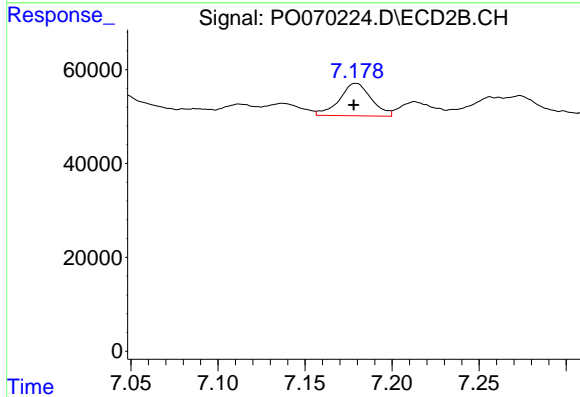
#33 AR-1260-3

R.T.: 6.703 min
 Delta R.T.: 0.002 min
 Response: 129058
 Conc: 36.59 ng/ml

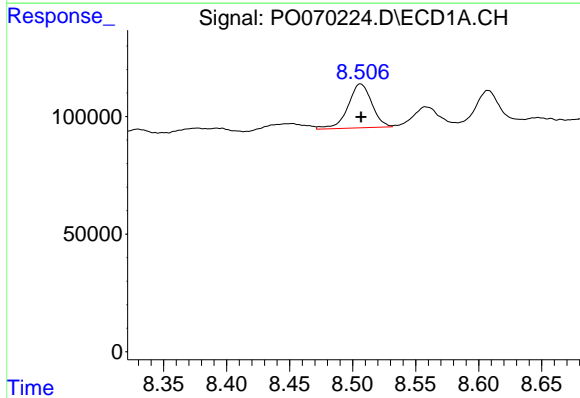


#34 AR-1260-4
 R.T.: 8.191 min
 Delta R.T.: 0.000 min
 Response: 103089
 Conc: 29.22 ng/ml

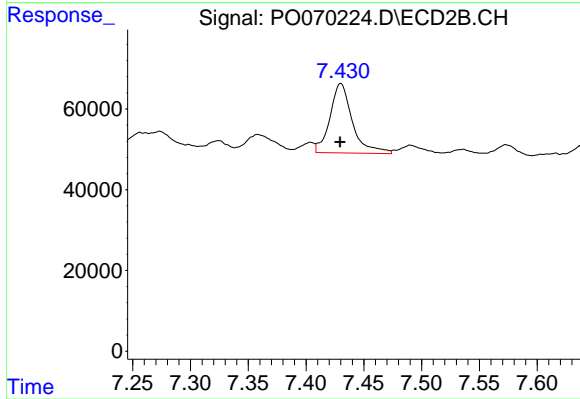
Instrument :
 ECD_O
ClientSampleId :
 SHB-MOTOR-ROOM



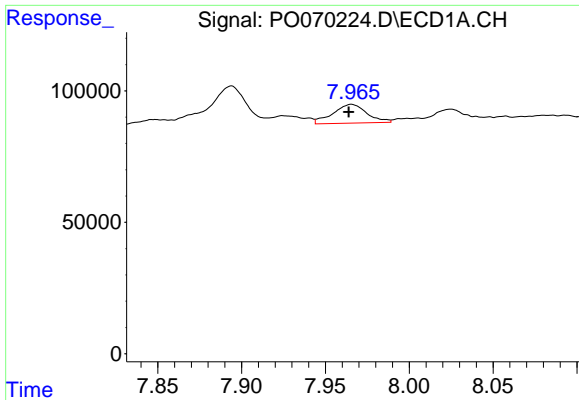
#34 AR-1260-4
 R.T.: 7.179 min
 Delta R.T.: 0.001 min
 Response: 87861
 Conc: 28.85 ng/ml



#35 AR-1260-5
 R.T.: 8.506 min
 Delta R.T.: 0.000 min
 Response: 245059
 Conc: 29.30 ng/ml

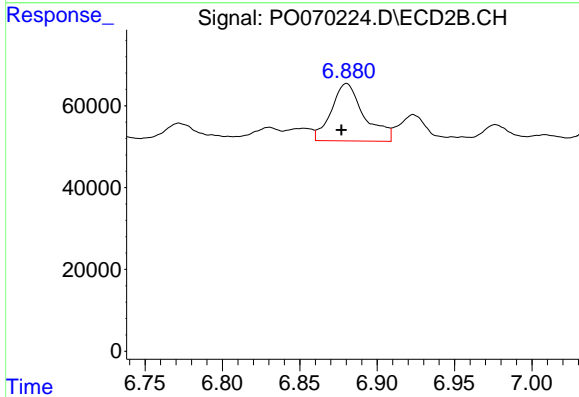


#35 AR-1260-5
 R.T.: 7.430 min
 Delta R.T.: 0.000 min
 Response: 232780
 Conc: 28.68 ng/ml

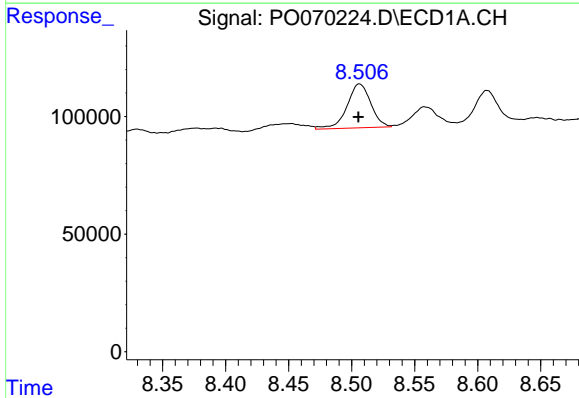


#36 AR-1262-1
 R.T.: 7.966 min
 Delta R.T.: 0.002 min
 Response: 100901
 Conc: 17.77 ng/ml

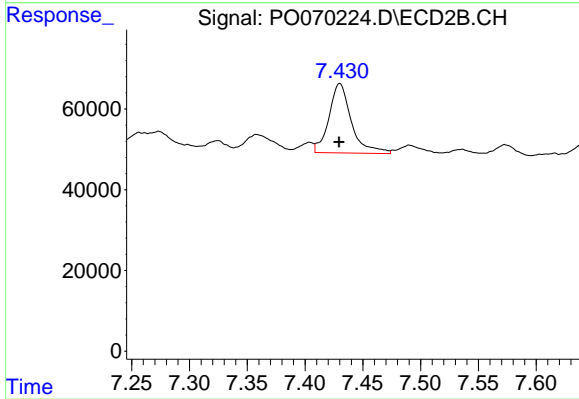
Instrument :
 ECD_O
ClientSampleId :
 SHB-MOTOR-ROOM



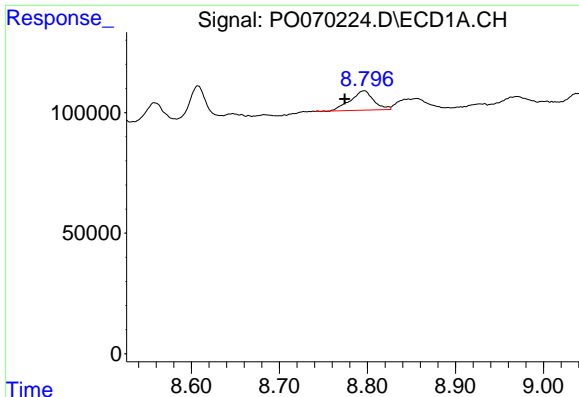
#36 AR-1262-1
 R.T.: 6.880 min
 Delta R.T.: 0.003 min
 Response: 206750
 Conc: 87.01 ng/ml



#37 AR-1262-2
 R.T.: 8.506 min
 Delta R.T.: 0.000 min
 Response: 245059
 Conc: 25.11 ng/ml



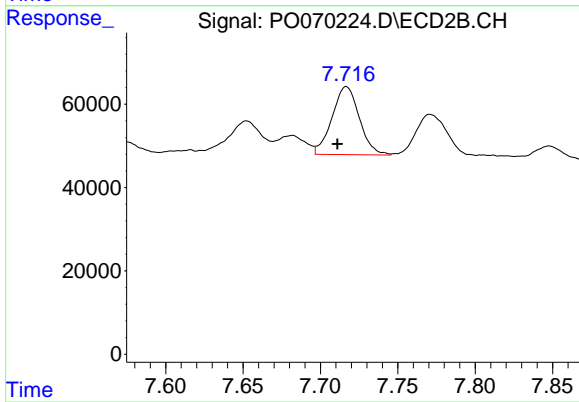
#37 AR-1262-2
 R.T.: 7.430 min
 Delta R.T.: 0.000 min
 Response: 232780
 Conc: 26.20 ng/ml



#38 AR-1262-3

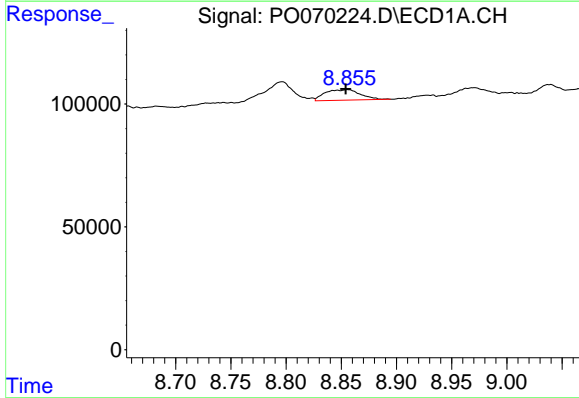
R.T.: 8.796 min
 Delta R.T.: 0.022 min
 Response: 147219
 Conc: 33.92 ng/ml

Instrument :
 ECD_O
 ClientSampleId :
 SHB-MOTOR-ROOM



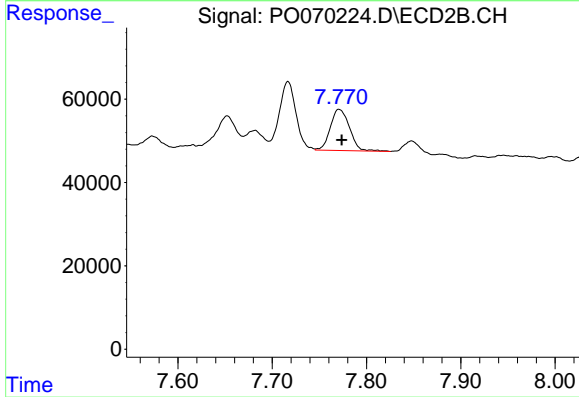
#38 AR-1262-3

R.T.: 7.717 min
 Delta R.T.: 0.006 min
 Response: 201052
 Conc: 54.70 ng/ml



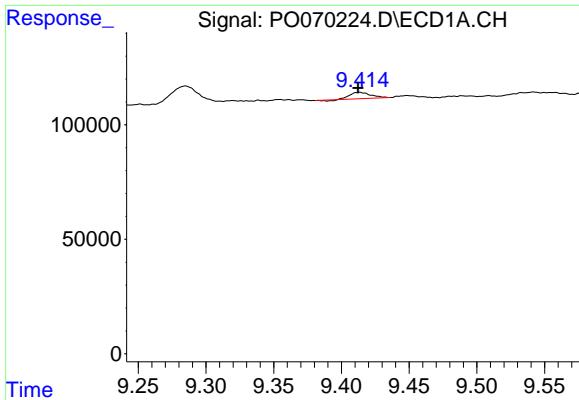
#39 AR-1262-4

R.T.: 8.856 min
 Delta R.T.: 0.002 min
 Response: 96086
 Conc: 20.56 ng/ml



#39 AR-1262-4

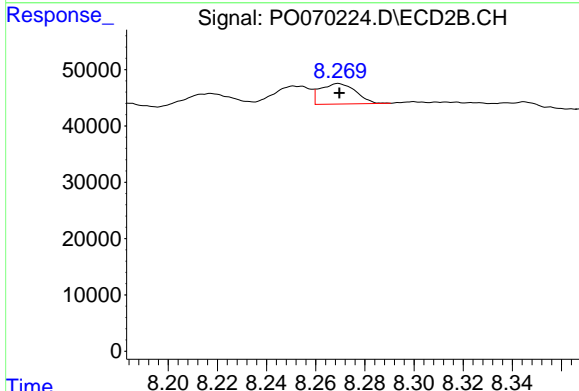
R.T.: 7.771 min
 Delta R.T.: -0.003 min
 Response: 140406
 Conc: 21.88 ng/ml



#40 AR-1262-5

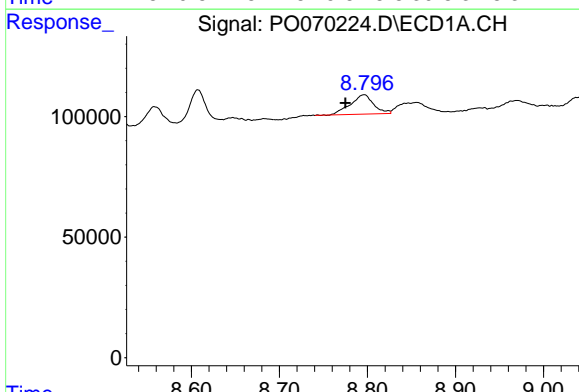
R.T.: 9.413 min
 Delta R.T.: 0.000 min
 Response: 27975
 Conc: 8.97 ng/ml

Instrument :
 ECD_O
ClientSampleId :
 SHB-MOTOR-ROOM



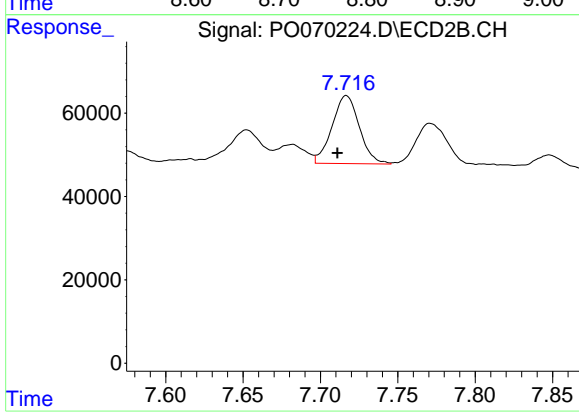
#40 AR-1262-5

R.T.: 8.269 min
 Delta R.T.: 0.000 min
 Response: 36614
 Conc: 11.68 ng/ml



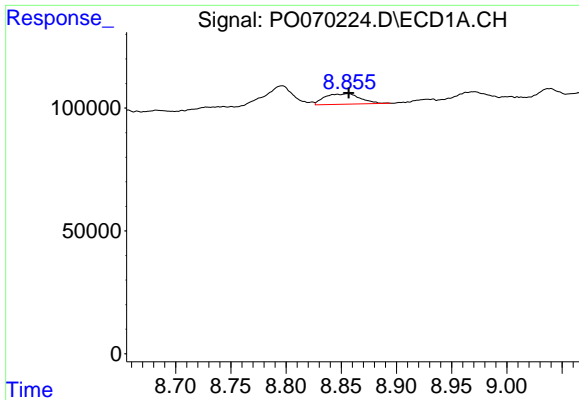
#41 AR-1268-1

R.T.: 8.796 min
 Delta R.T.: 0.021 min
 Response: 147219
 Conc: 12.42 ng/ml



#41 AR-1268-1

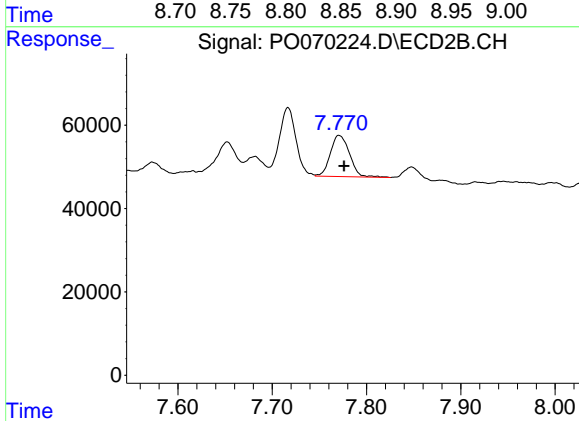
R.T.: 7.717 min
 Delta R.T.: 0.006 min
 Response: 201052
 Conc: 18.79 ng/ml



#42 AR-1268-2

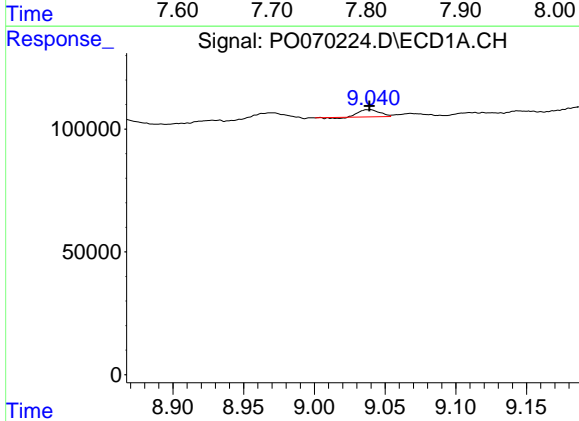
R.T.: 8.856 min
 Delta R.T.: 0.000 min
 Response: 96086
 Conc: 9.46 ng/ml

Instrument :
 ECD_O
 ClientSampleId :
 SHB-MOTOR-ROOM



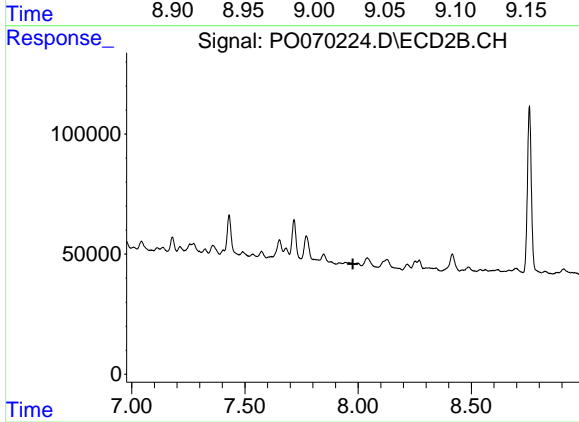
#42 AR-1268-2

R.T.: 7.771 min
 Delta R.T.: -0.005 min
 Response: 140406
 Conc: 14.93 ng/ml



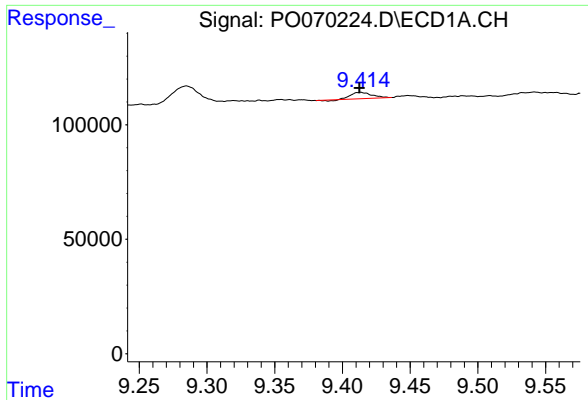
#43 AR-1268-3

R.T.: 9.039 min
 Delta R.T.: 0.000 min
 Response: 29064
 Conc: 3.38 ng/ml



#43 AR-1268-3

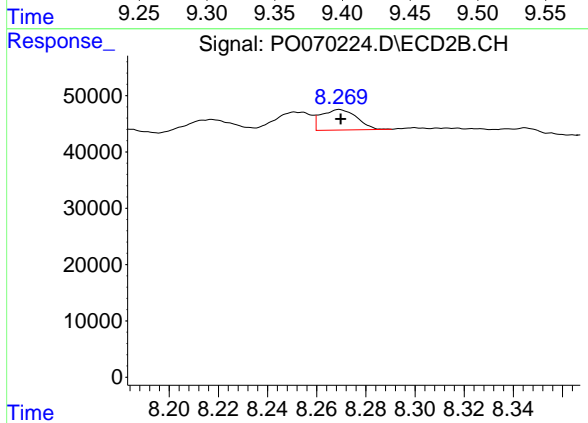
R.T.: 0.000 min
 Exp R.T.: 7.977 min
 Response: 0
 Conc: N.D.



#44 AR-1268-4

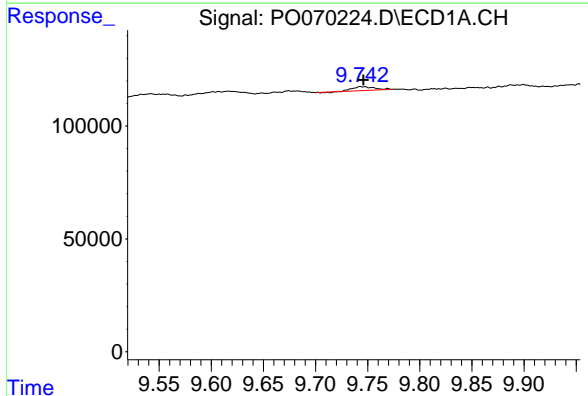
R.T.: 9.413 min
 Delta R.T.: 0.000 min
 Response: 27975
 Conc: 7.92 ng/ml

Instrument :
 ECD_O
ClientSampleId :
 SHB-MOTOR-ROOM



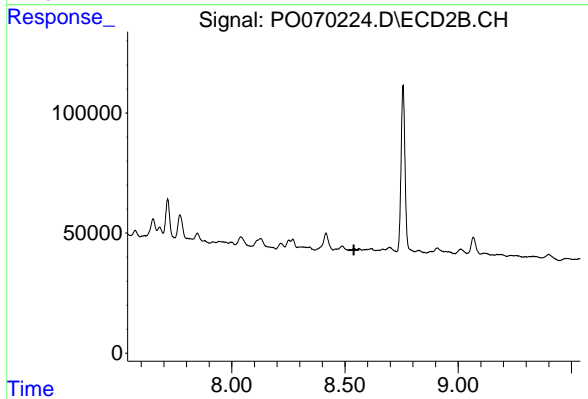
#44 AR-1268-4

R.T.: 8.269 min
 Delta R.T.: 0.000 min
 Response: 36614
 Conc: 10.49 ng/ml



#45 AR-1268-5

R.T.: 9.743 min
 Delta R.T.: -0.003 min
 Response: 24538
 Conc: 0.96 ng/ml



#45 AR-1268-5

R.T.: 0.000 min
 Exp R.T. : 8.539 min
 Response: 0
 Conc: N.D.