

Data Path : Z:\pestpcbsrv\HPCHEM1\ECD_0\Data\P0073021\
 Data File : P0080001.D
 Signal(s) : Signal #1: ECD1A.CH Signal #2: ECD2B.CH
 Acq On : 30 Jul 2021 11:59
 Operator : DD\AJ
 Sample : M3176-01
 Misc :
 ALS Vial : 14 Sample Multiplier: 1

Instrument :
 ECD_0
 ClientSampleId :
 18-B7-TP-(9.5-12)

Integration File signal 1: autoint1.e
 Integration File signal 2: autoint2.e
 Quant Time: Jul 30 16:24:22 2021
 Quant Method : Z:\pestpcbsrv\HPCHEM1\ECD_0\methods\P0072821.M
 Quant Title : GC EXTRACTABLES
 QLast Update : Wed Jul 28 18:45:36 2021
 Response via : Initial Calibration
 Integrator: ChemStation 6890 Scale Mode: Small noise peaks clipped

Volume Inj. : 2 µl
 Signal #1 Phase : ZB-MR1 Signal #2 Phase: ZB-MR2
 Signal #1 Info : 30Mx0.32mmx 0.50µ Signal #2 Info : 30M x 0.32mm x 0.25µm

Compound	RT#1	RT#2	Resp#1	Resp#2	ng/ml	ng/ml
System Monitoring Compounds						
1) SA Tetrachlo...	4.999	4.118	1412438	513935	23.440	22.441
2) SA Decachlor...	11.109	9.531	5385007	2206403	114.794	106.171
Target Compounds						
3) L1 AR-1016-1	6.330	5.396	276843	113963	125.938	121.247
4) L1 AR-1016-2	6.354	5.416	517344	160897	169.564	126.470 #
5) L1 AR-1016-3	6.422	5.612	246224	157076	130.844	222.796 #
6) L1 AR-1016-4	6.525	5.663	339998	283009	220.508	468.353 #
7) L1 AR-1016-5	6.844	5.897	809075	243941	534.779	331.240 #
8) L2 AR-1221-1	5.252	4.372	63703	97756	98.861	338.528 #
9) L2 AR-1221-2	5.355	4.480	354982	56458	773.088	263.244 #
10) L2 AR-1221-3	5.440	4.573	459104	57620	297.529	88.754 #
11) L3 AR-1232-1	5.440	4.573	459104	57620	322.165	95.555 #
12) L3 AR-1232-2	6.033	5.416	673806	160897	964.585	286.118 #
13) L3 AR-1232-3	6.354	5.612	517344	157076	388.170	521.739 #
14) L3 AR-1232-4	6.525	5.708	339998	183953	522.068	646.198
15) L3 AR-1232-5	6.626	5.897	703188	243941	1574.694	812.293 #
16) L4 AR-1242-1	6.330	5.396	276843	113963	166.104	160.019
17) L4 AR-1242-2	6.354	5.416	517344	160897	224.950	166.153 #
18) L4 AR-1242-3	6.422	5.612	246224	157076	173.447	292.746 #
19) L4 AR-1242-4	6.525	5.708	339998	183953	299.622	327.599
20) L4 AR-1242-5	7.316	6.284	870051	734795	685.304	1129.252 #
21) L5 AR-1248-1	6.330	5.396	276843	113963	218.385	206.380
22) L5 AR-1248-2	6.626	5.663	703188	283009	403.356	343.505
23) L5 AR-1248-3	6.844	5.708	809075	183953	394.765	221.659 #
24) L5 AR-1248-4	7.275	5.897	784456	243941	335.110	258.160
25) L5 AR-1248-5	7.316	6.326	870051	211416	382.605	230.579 #
26) L6 AR-1254-1	7.246	6.284	1430749	734795	654.988	541.857
27) L6 AR-1254-2	7.477	6.442	2045708	531647	622.978	443.388 #
28) L6 AR-1254-3	7.862	6.871	1925888	934008	559.338	499.185
29) L6 AR-1254-4	8.155	7.113	1046495	441526	411.458	372.945
30) L6 AR-1254-5	8.586	7.548	1275001	776895	479.423	484.985
31) L7 AR-1260-1	8.026	7.010	416134	430521	169.611	332.612 #
32) L7 AR-1260-2	8.291	7.208	2365676	473437	769.783	309.484 #
33) L7 AR-1260-3	8.658	7.365	401018	331681	180.859	227.169 #
34) L7 AR-1260-4	8.885	7.856	588743	139071	229.344	117.362 #
35) L7 AR-1260-5	9.227	8.105	588982	399303	115.194	151.155 #
36) L8 AR-1262-1	8.658	7.548	401018	776895	125.407	922.952 #
37) L8 AR-1262-2	9.227	8.105	588982	399303	108.750	148.712 #
38) L8 AR-1262-3	9.545	8.397	355700	171530	94.047	154.436 #
39) L8 AR-1262-4	9.641	8.461	339353	308777	120.099	154.435 #
40) L8 AR-1262-5	10.332	8.966	203271	87763	106.898	89.970
41) L9 AR-1268-1	9.545	8.397	355700	171530	54.942	56.453

Data Path : Z:\pestpcbsrv\HPCHEM1\ECD_0\Data\P0073021\
 Data File : P0080001.D
 Signal(s) : Signal #1: ECD1A.CH Signal #2: ECD2B.CH
 Acq On : 30 Jul 2021 11:59
 Operator : DD\AJ
 Sample : M3176-01
 Misc :
 ALS Vial : 14 Sample Multiplier: 1

Instrument :
 ECD_0
 ClientSampleId :
 18-B7-TP-(9.5-12)

Integration File signal 1: autoint1.e
 Integration File signal 2: autoint2.e
 Quant Time: Jul 30 16:24:22 2021
 Quant Method : Z:\pestpcbsrv\HPCHEM1\ECD_0\methods\P0072821.M
 Quant Title : GC EXTRACTABLES
 QLast Update : Wed Jul 28 18:45:36 2021
 Response via : Initial Calibration
 Integrator: ChemStation 6890 Scale Mode: Small noise peaks clipped

Volume Inj. : 2 µl
 Signal #1 Phase : ZB-MR1 Signal #2 Phase: ZB-MR2
 Signal #1 Info : 30Mx0.32mmx 0.50µ Signal #2 Info : 30M x 0.32mm x 0.25µm

	Compound	RT#1	RT#2	Resp#1	Resp#2	ng/ml	ng/ml
42)	L9 AR-1268-2	9.641	8.461	339353	308777	57.029	113.482 #
43)	L9 AR-1268-3	9.878	8.674	696471	331679	138.606	143.082
44)	L9 AR-1268-4	10.332	8.966	203271	87763	88.469	81.974
45)	L9 AR-1268-5	10.760	9.268	1081704	506121	64.881	72.877

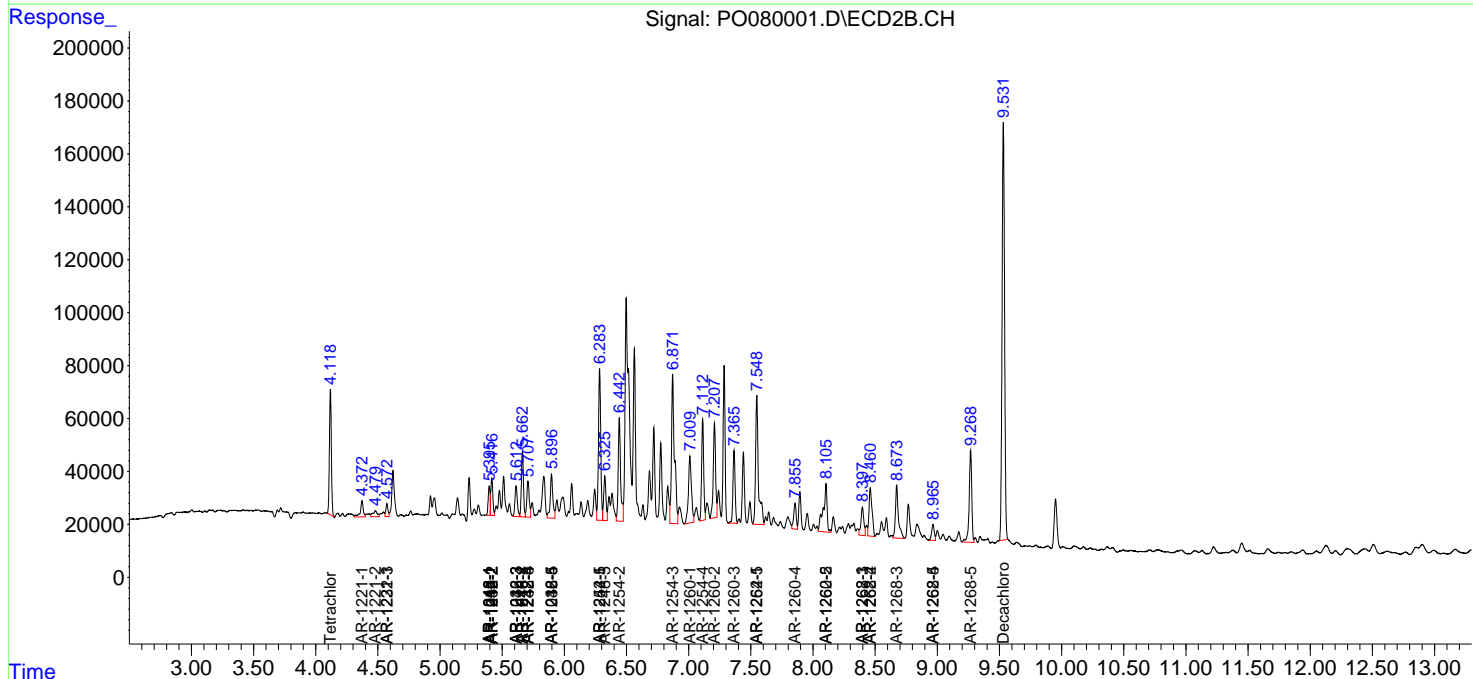
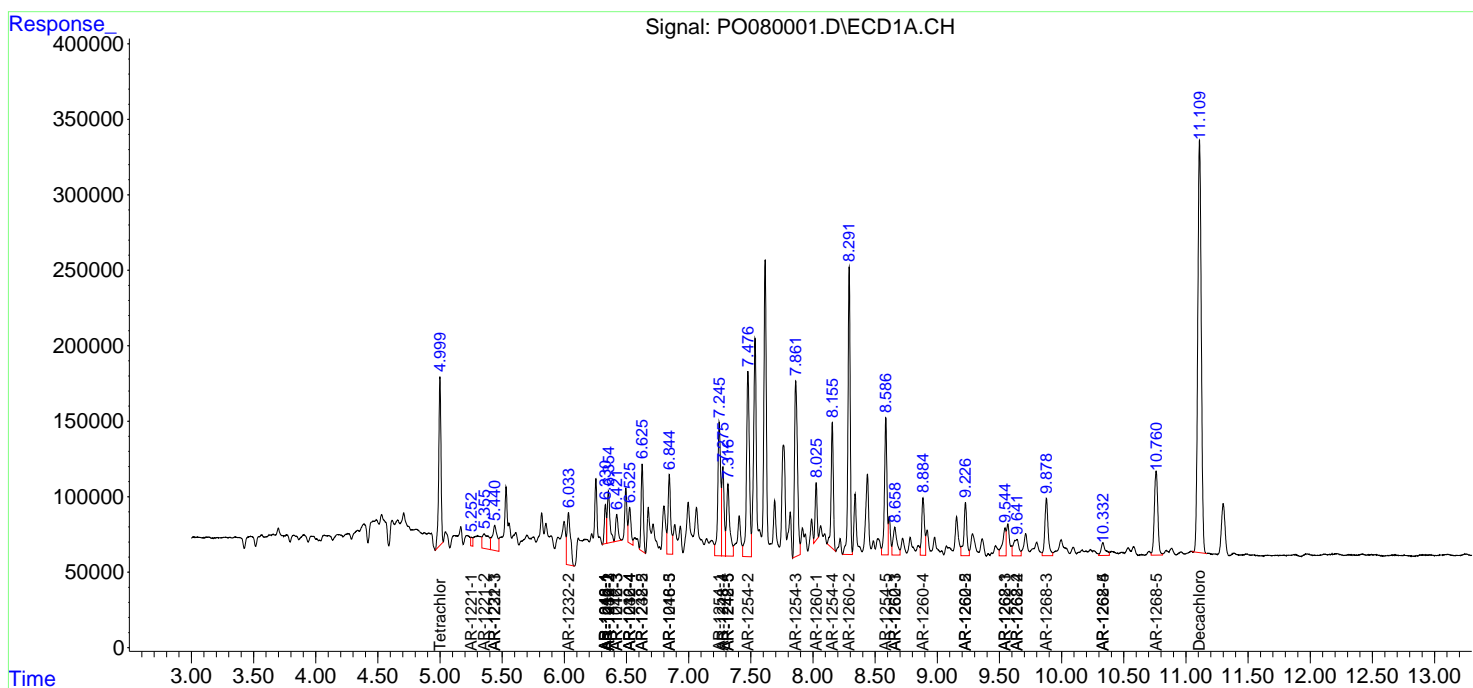
(f)=RT Delta > 1/2 Window (#)=Amounts differ by > 25% (m)=manual int.

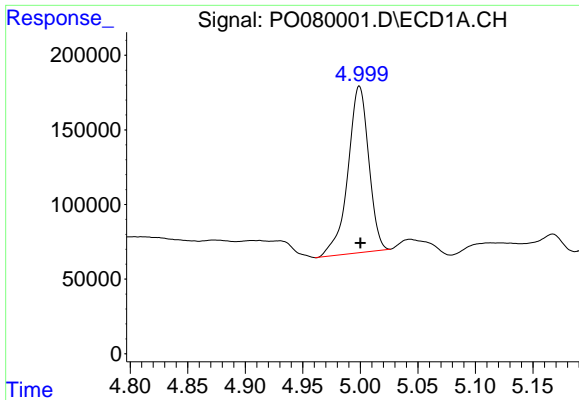
Data Path : Z:\pestpcbsrv\HPCHEM1\ECD_0\Data\P0073021\
 Data File : P0080001.D
 Signal(s) : Signal #1: ECD1A.CH Signal #2: ECD2B.CH
 Acq On : 30 Jul 2021 11:59
 Operator : DD\AJ
 Sample : M3176-01
 Misc :
 ALS Vial : 14 Sample Multiplier: 1

Instrument :
 ECD_O
 Client Sampled :
 18-B7-TP-(9.5-12)

Integration File signal 1: autoint1.e
 Integration File signal 2: autoint2.e
 Quant Time: Jul 30 16:24:22 2021
 Quant Method : Z:\pestpcbsrv\HPCHEM1\ECD_0\methods\P0072821.M
 Quant Title : GC EXTRACTABLES
 QLast Update : Wed Jul 28 18:45:36 2021
 Response via : Initial Calibration
 Integrator: ChemStation 6890 Scale Mode: Small noise peaks clipped

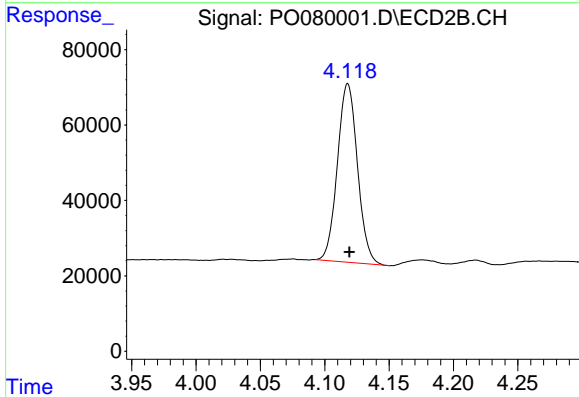
Volume Inj. : 2 µl
 Signal #1 Phase : ZB-MR1 Signal #2 Phase: ZB-MR2
 Signal #1 Info : 30Mx0.32mmx 0.50µ Signal #2 Info : 30M x 0.32mm x 0.25µm



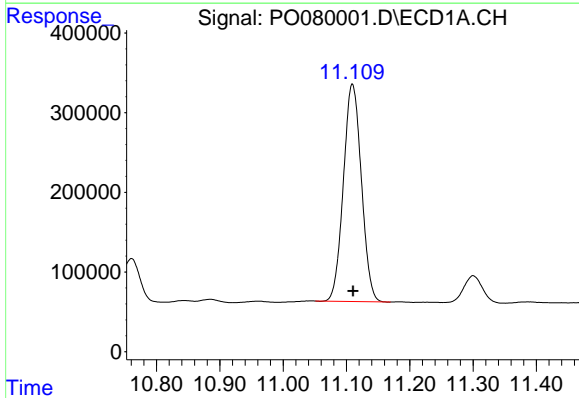


#1 Tetrachloro-m-xylene
R.T.: 4.999 min
Delta R.T.: 0.000 min
Response: 1412438
Conc: 23.44 ng/ml

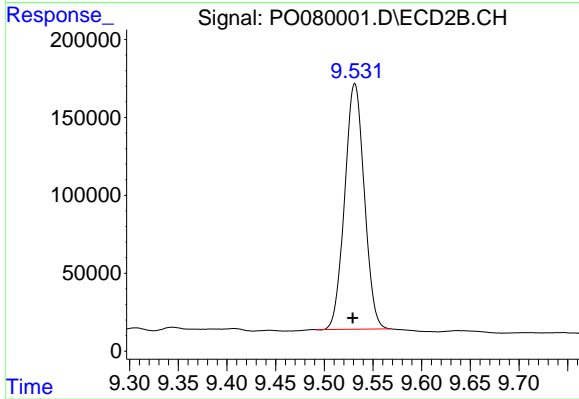
Instrument :
ECD_O
ClientSampleId :
18-B7-TP-(9.5-12)



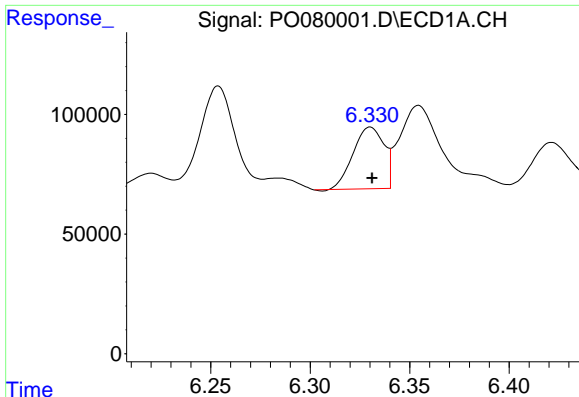
#1 Tetrachloro-m-xylene
R.T.: 4.118 min
Delta R.T.: -0.001 min
Response: 513935
Conc: 22.44 ng/ml



#2 Decachlorobiphenyl
R.T.: 11.109 min
Delta R.T.: -0.001 min
Response: 5385007
Conc: 114.79 ng/ml



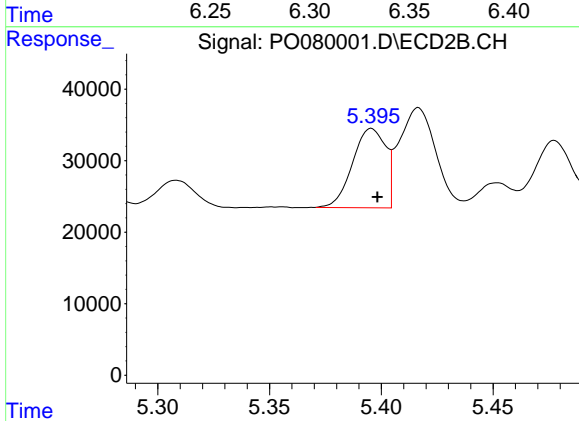
#2 Decachlorobiphenyl
R.T.: 9.531 min
Delta R.T.: 0.002 min
Response: 2206403
Conc: 106.17 ng/ml



#3 AR-1016-1

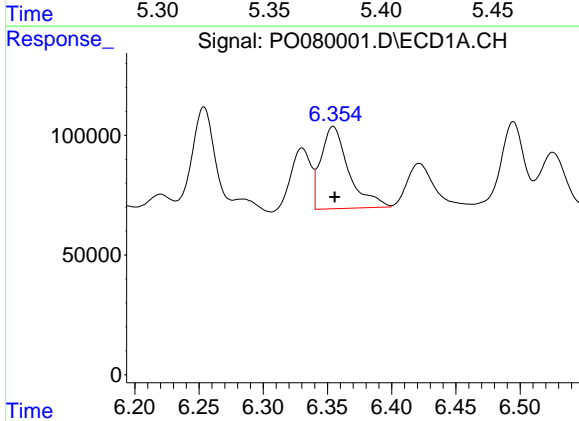
R.T.: 6.330 min
 Delta R.T.: 0.000 min
 Response: 276843
 Conc: 125.94 ng/ml

Instrument :
 ECD_O
 ClientSampleId :
 18-B7-TP-(9.5-12)



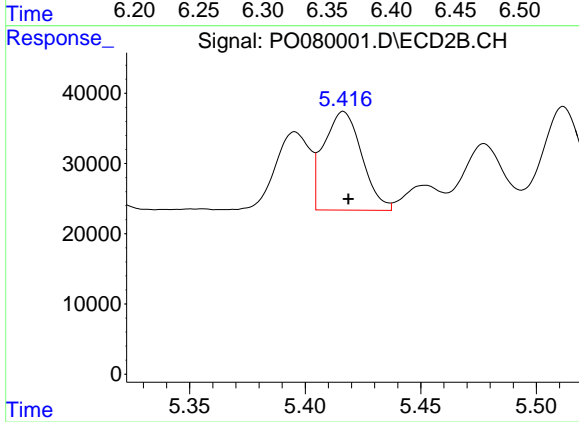
#3 AR-1016-1

R.T.: 5.396 min
 Delta R.T.: -0.002 min
 Response: 113963
 Conc: 121.25 ng/ml



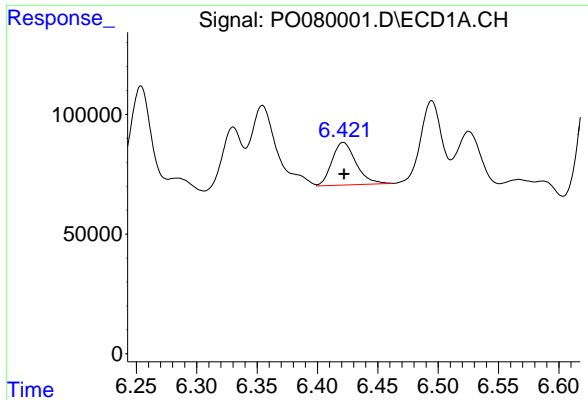
#4 AR-1016-2

R.T.: 6.354 min
 Delta R.T.: -0.001 min
 Response: 517344
 Conc: 169.56 ng/ml



#4 AR-1016-2

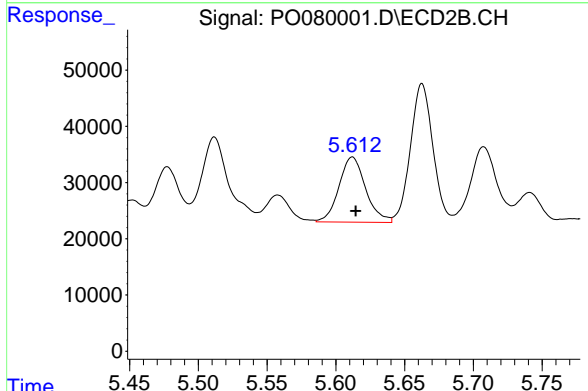
R.T.: 5.416 min
 Delta R.T.: -0.002 min
 Response: 160897
 Conc: 126.47 ng/ml



#5 AR-1016-3

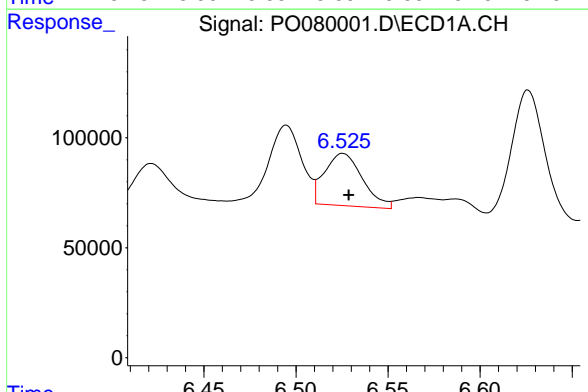
R.T.: 6.422 min
 Delta R.T.: 0.000 min
 Response: 246224
 Conc: 130.84 ng/ml

Instrument :
 ECD_O
 ClientSampleId :
 18-B7-TP-(9.5-12)



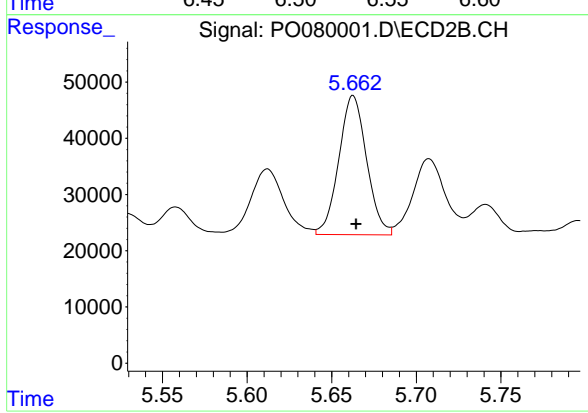
#5 AR-1016-3

R.T.: 5.612 min
 Delta R.T.: -0.002 min
 Response: 157076
 Conc: 222.80 ng/ml



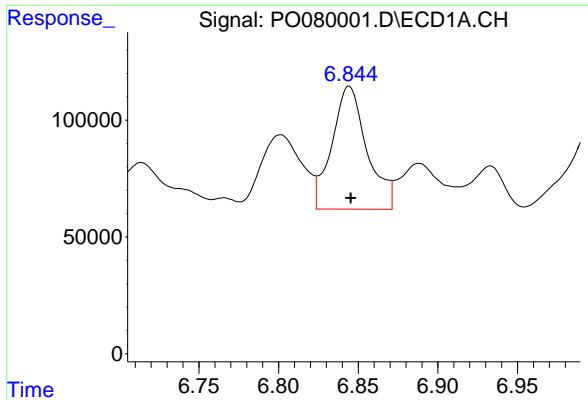
#6 AR-1016-4

R.T.: 6.525 min
 Delta R.T.: -0.003 min
 Response: 339998
 Conc: 220.51 ng/ml



#6 AR-1016-4

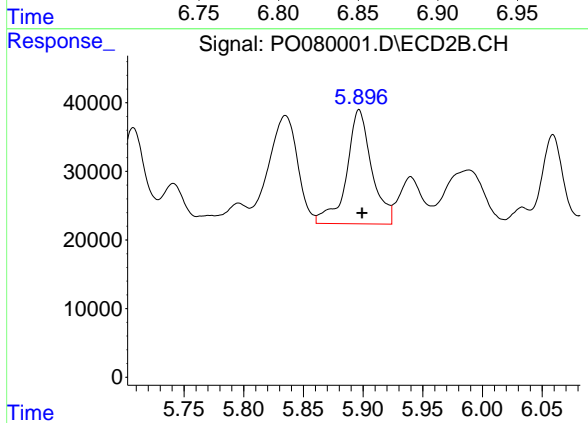
R.T.: 5.663 min
 Delta R.T.: -0.002 min
 Response: 283009
 Conc: 468.35 ng/ml



#7 AR-1016-5

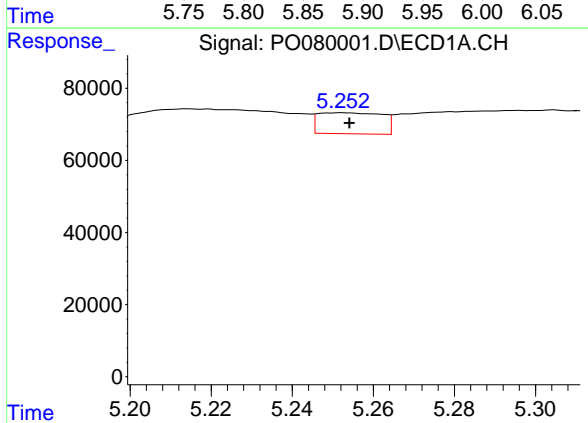
R.T.: 6.844 min
 Delta R.T.: -0.001 min
 Response: 809075
 Conc: 534.78 ng/ml

Instrument :
 ECD_O
 ClientSampleId :
 18-B7-TP-(9.5-12)



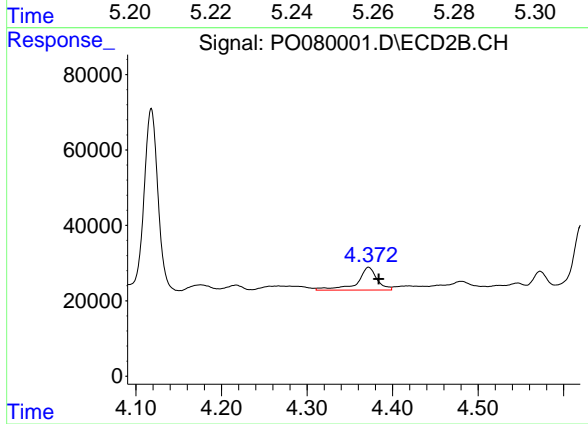
#7 AR-1016-5

R.T.: 5.897 min
 Delta R.T.: -0.002 min
 Response: 243941
 Conc: 331.24 ng/ml



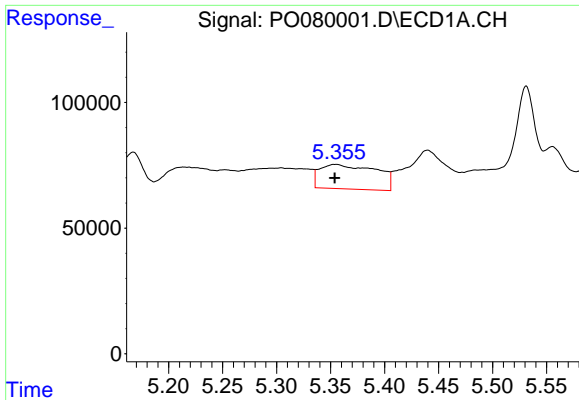
#8 AR-1221-1

R.T.: 5.252 min
 Delta R.T.: -0.002 min
 Response: 63703
 Conc: 98.86 ng/ml



#8 AR-1221-1

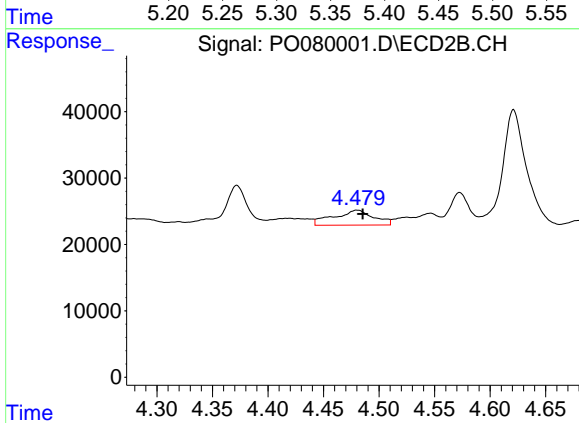
R.T.: 4.372 min
 Delta R.T.: -0.012 min
 Response: 97756
 Conc: 338.53 ng/ml



#9 AR-1221-2

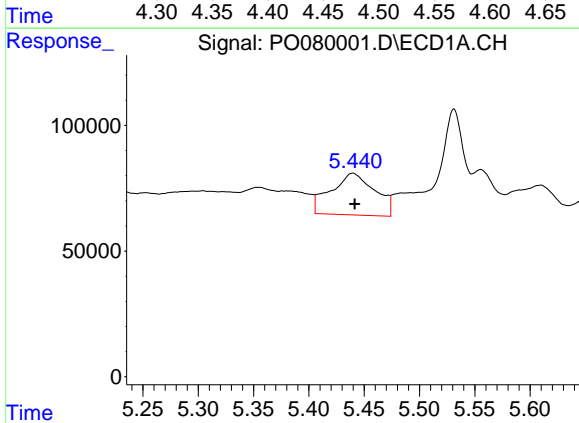
R.T.: 5.355 min
 Delta R.T.: 0.000 min
 Response: 354982
 Conc: 773.09 ng/ml

Instrument :
 ECD_O
 ClientSampleId :
 18-B7-TP-(9.5-12)



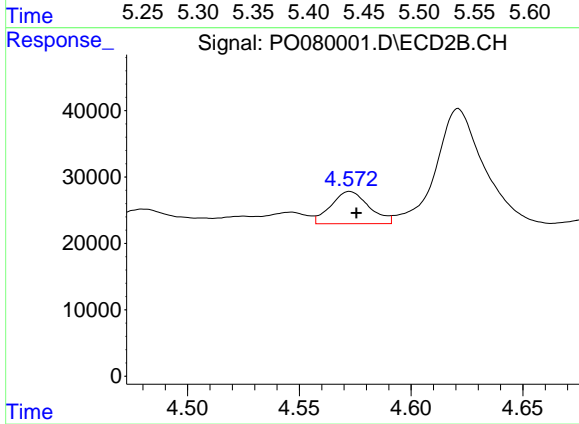
#9 AR-1221-2

R.T.: 4.480 min
 Delta R.T.: -0.005 min
 Response: 56458
 Conc: 263.24 ng/ml



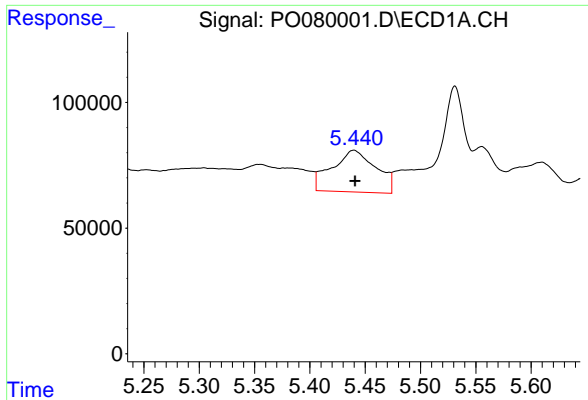
#10 AR-1221-3

R.T.: 5.440 min
 Delta R.T.: -0.002 min
 Response: 459104
 Conc: 297.53 ng/ml



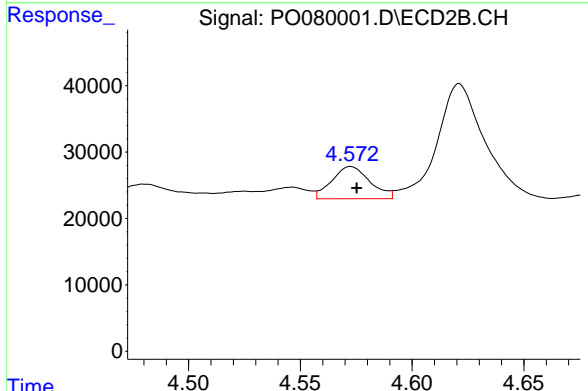
#10 AR-1221-3

R.T.: 4.573 min
 Delta R.T.: -0.003 min
 Response: 57620
 Conc: 88.75 ng/ml

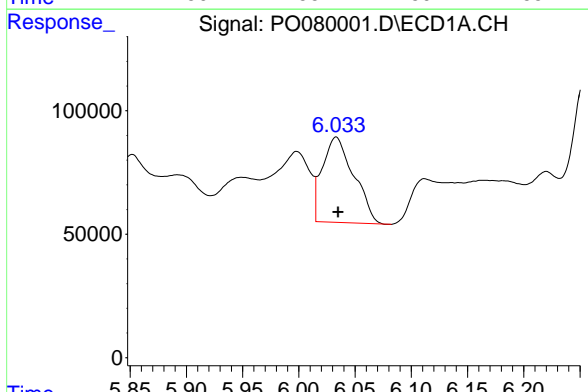


#11 AR-1232-1
 R.T.: 5.440 min
 Delta R.T.: 0.000 min
 Response: 459104
 Conc: 322.16 ng/ml

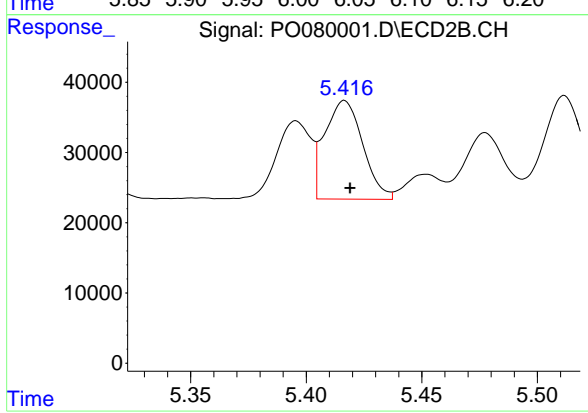
Instrument :
 ECD_O
ClientSampleId :
 18-B7-TP-(9.5-12)



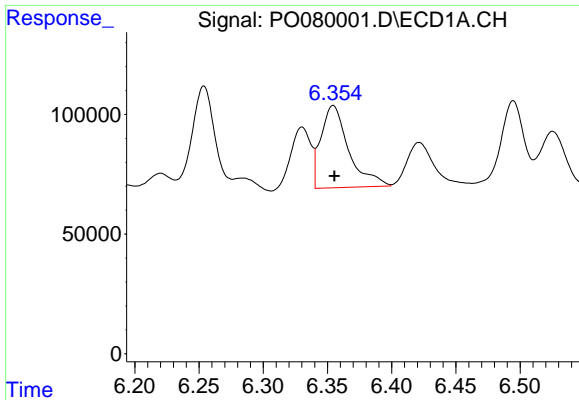
#11 AR-1232-1
 R.T.: 4.573 min
 Delta R.T.: -0.003 min
 Response: 57620
 Conc: 95.56 ng/ml



#12 AR-1232-2
 R.T.: 6.033 min
 Delta R.T.: -0.002 min
 Response: 673806
 Conc: 964.58 ng/ml



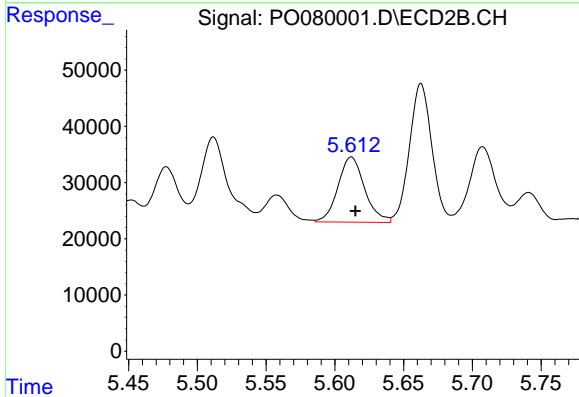
#12 AR-1232-2
 R.T.: 5.416 min
 Delta R.T.: -0.002 min
 Response: 160897
 Conc: 286.12 ng/ml



#13 AR-1232-3

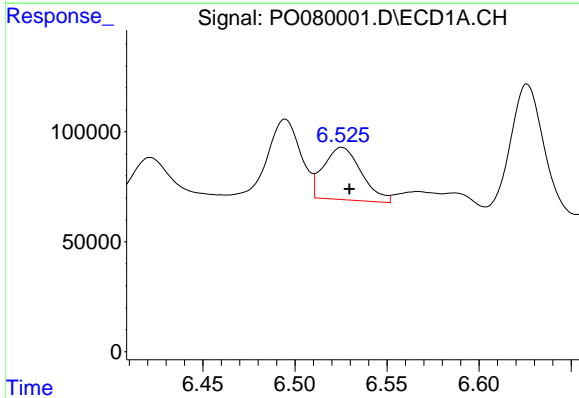
R.T.: 6.354 min
 Delta R.T.: 0.000 min
 Response: 517344
 Conc: 388.17 ng/ml

Instrument :
 ECD_O
ClientSampleId :
 18-B7-TP-(9.5-12)



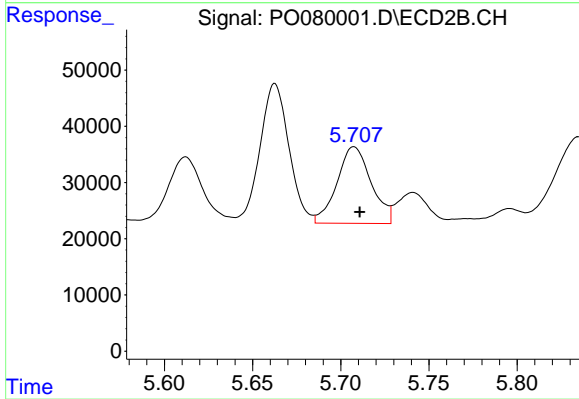
#13 AR-1232-3

R.T.: 5.612 min
 Delta R.T.: -0.003 min
 Response: 157076
 Conc: 521.74 ng/ml



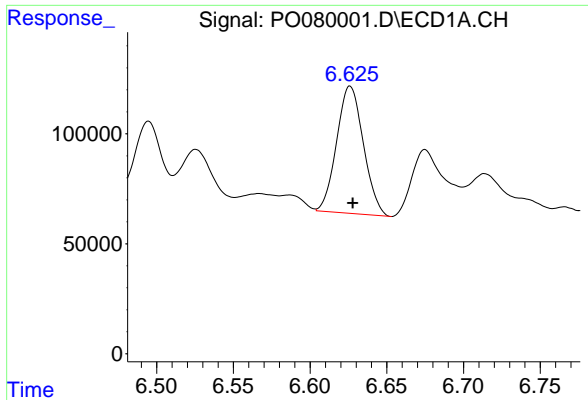
#14 AR-1232-4

R.T.: 6.525 min
 Delta R.T.: -0.004 min
 Response: 339998
 Conc: 522.07 ng/ml



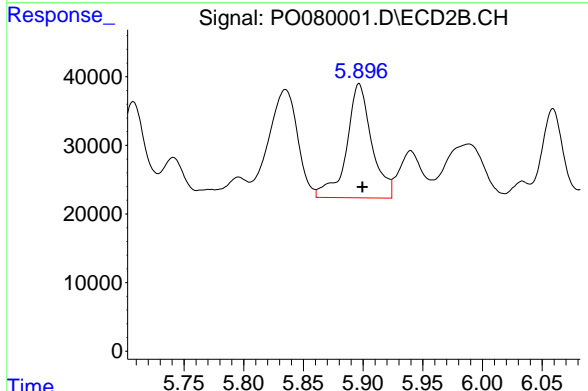
#14 AR-1232-4

R.T.: 5.708 min
 Delta R.T.: -0.003 min
 Response: 183953
 Conc: 646.20 ng/ml

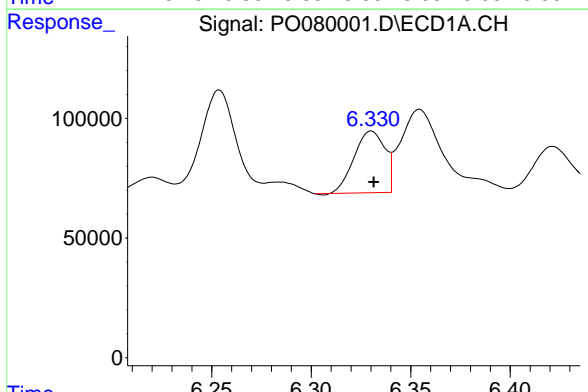


#15 AR-1232-5
 R.T.: 6.626 min
 Delta R.T.: -0.002 min
 Response: 703188
 Conc: 1574.69 ng/ml

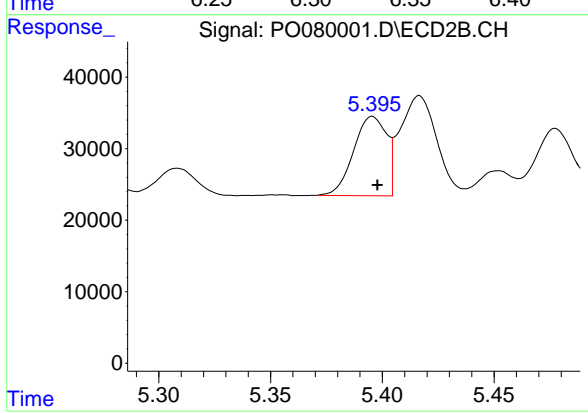
Instrument :
 ECD_O
ClientSampleId :
 18-B7-TP-(9.5-12)



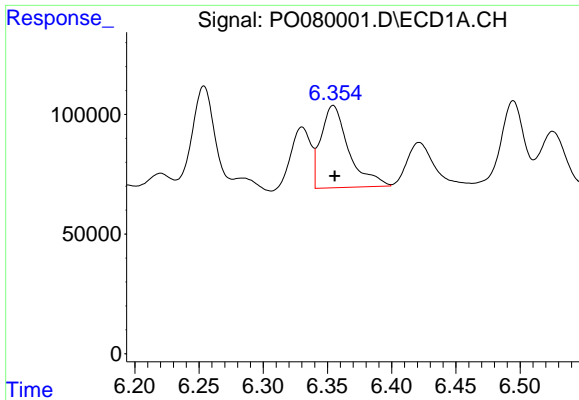
#15 AR-1232-5
 R.T.: 5.897 min
 Delta R.T.: -0.003 min
 Response: 243941
 Conc: 812.29 ng/ml



#16 AR-1242-1
 R.T.: 6.330 min
 Delta R.T.: -0.001 min
 Response: 276843
 Conc: 166.10 ng/ml



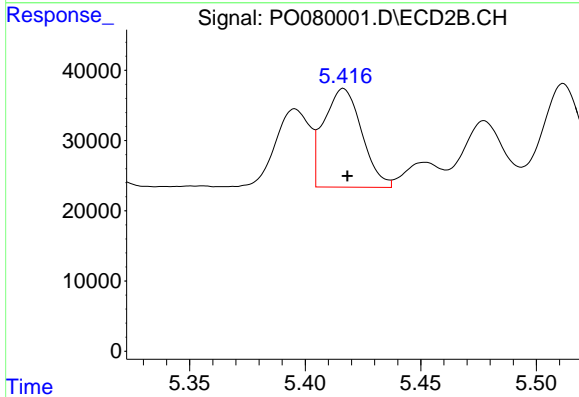
#16 AR-1242-1
 R.T.: 5.396 min
 Delta R.T.: -0.002 min
 Response: 113963
 Conc: 160.02 ng/ml



#17 AR-1242-2

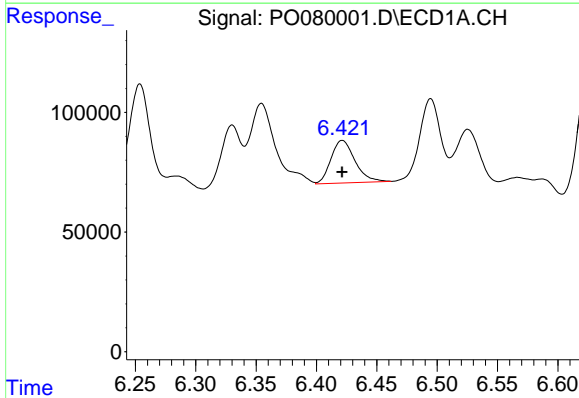
R.T.: 6.354 min
 Delta R.T.: -0.001 min
 Response: 517344
 Conc: 224.95 ng/ml

Instrument :
 ECD_O
 ClientSampleId :
 18-B7-TP-(9.5-12)



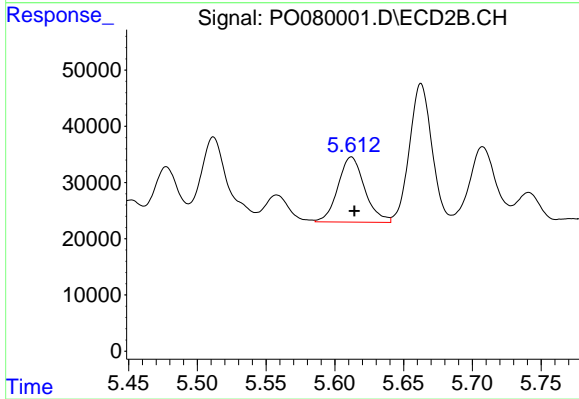
#17 AR-1242-2

R.T.: 5.416 min
 Delta R.T.: -0.002 min
 Response: 160897
 Conc: 166.15 ng/ml



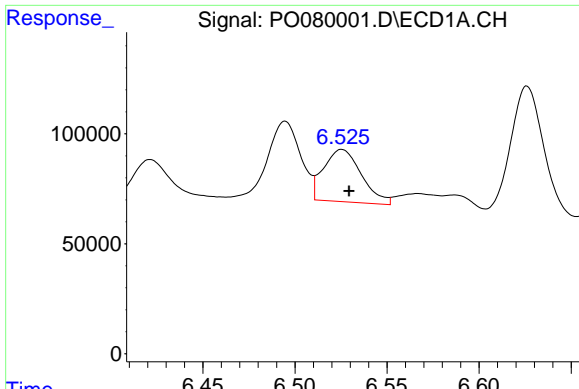
#18 AR-1242-3

R.T.: 6.422 min
 Delta R.T.: 0.000 min
 Response: 246224
 Conc: 173.45 ng/ml



#18 AR-1242-3

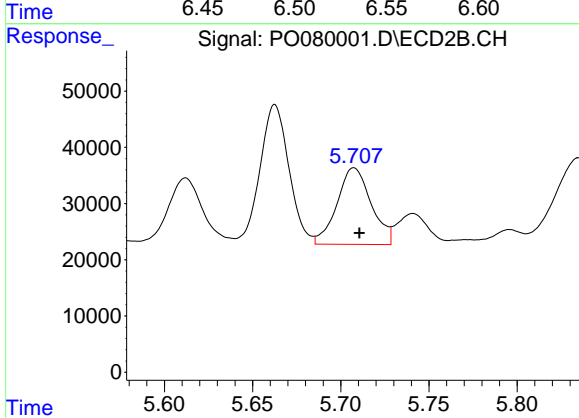
R.T.: 5.612 min
 Delta R.T.: -0.002 min
 Response: 157076
 Conc: 292.75 ng/ml



#19 AR-1242-4

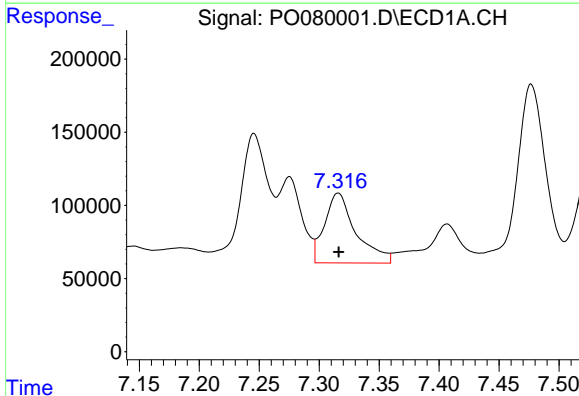
R.T.: 6.525 min
 Delta R.T.: -0.004 min
 Response: 339998
 Conc: 299.62 ng/ml

Instrument :
 ECD_O
ClientSampleId :
 18-B7-TP-(9.5-12)



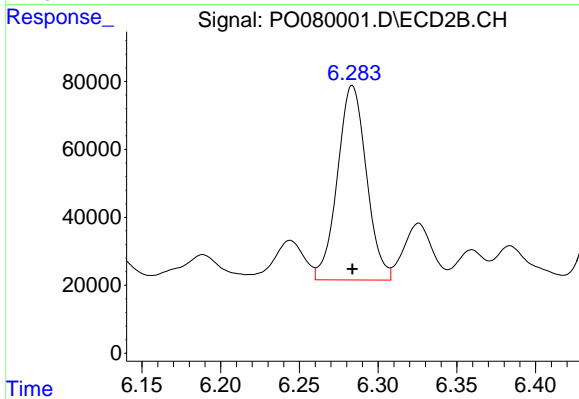
#19 AR-1242-4

R.T.: 5.708 min
 Delta R.T.: -0.003 min
 Response: 183953
 Conc: 327.60 ng/ml



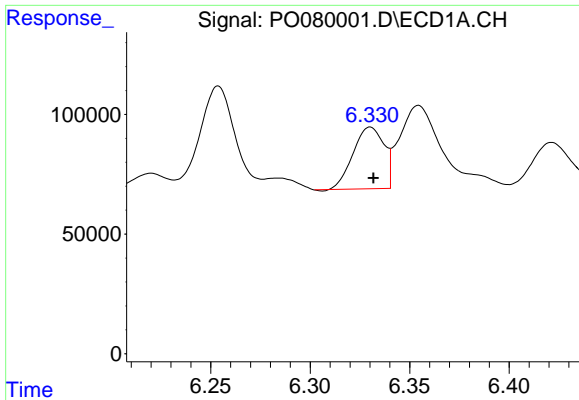
#20 AR-1242-5

R.T.: 7.316 min
 Delta R.T.: 0.000 min
 Response: 870051
 Conc: 685.30 ng/ml



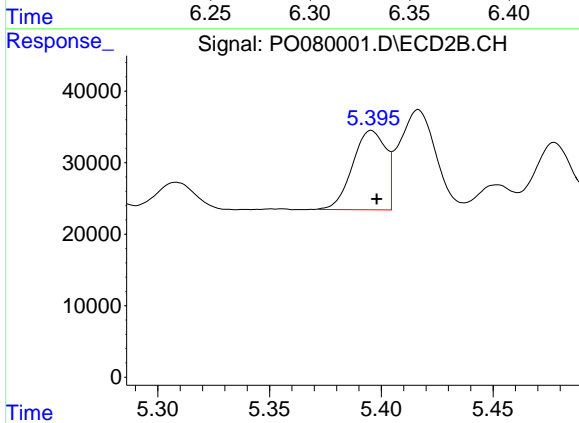
#20 AR-1242-5

R.T.: 6.284 min
 Delta R.T.: 0.000 min
 Response: 734795
 Conc: 1129.25 ng/ml

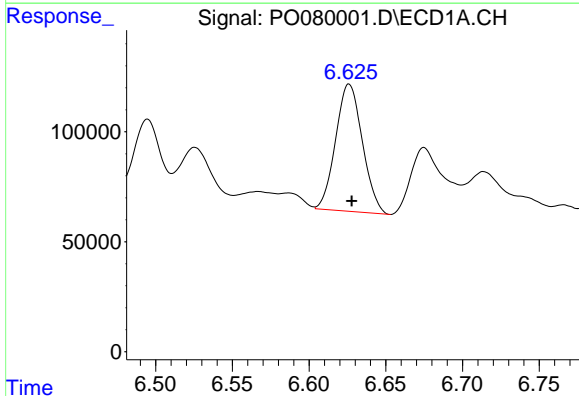


#21 AR-1248-1
 R.T.: 6.330 min
 Delta R.T.: -0.001 min
 Response: 276843
 Conc: 218.38 ng/ml

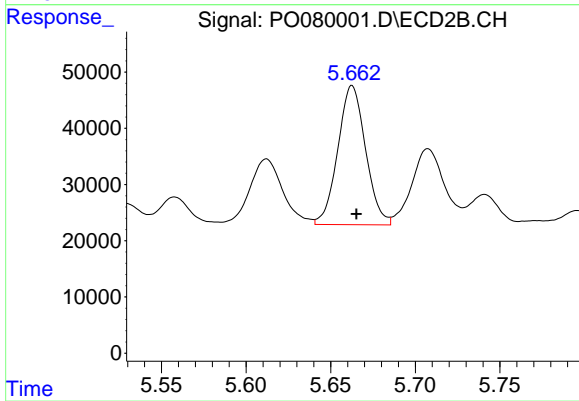
Instrument :
 ECD_O
 ClientSampleId :
 18-B7-TP-(9.5-12)



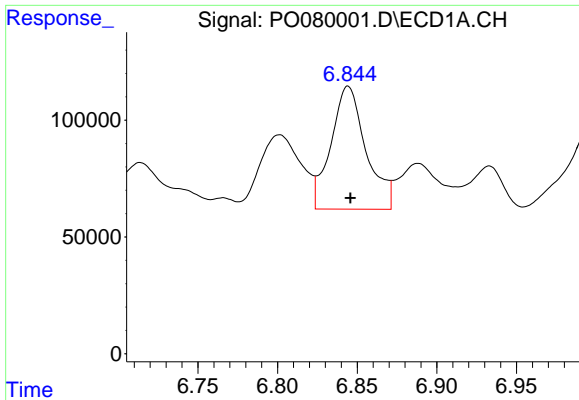
#21 AR-1248-1
 R.T.: 5.396 min
 Delta R.T.: -0.002 min
 Response: 113963
 Conc: 206.38 ng/ml



#22 AR-1248-2
 R.T.: 6.626 min
 Delta R.T.: -0.002 min
 Response: 703188
 Conc: 403.36 ng/ml



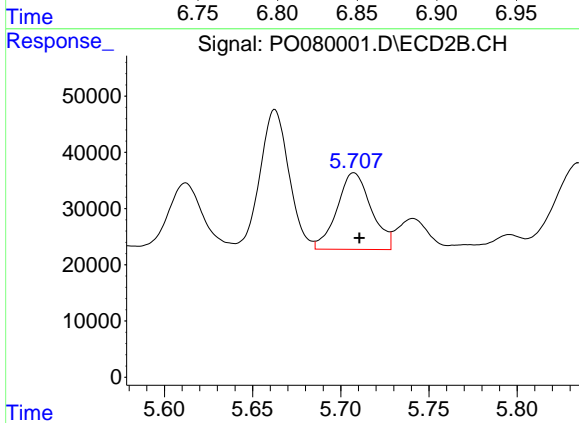
#22 AR-1248-2
 R.T.: 5.663 min
 Delta R.T.: -0.002 min
 Response: 283009
 Conc: 343.51 ng/ml



#23 AR-1248-3

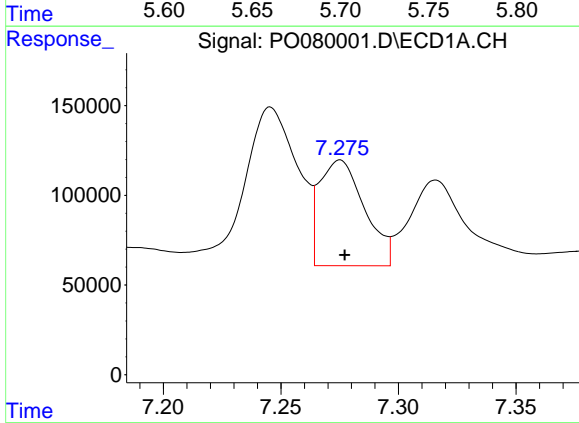
R.T.: 6.844 min
 Delta R.T.: -0.002 min
 Response: 809075
 Conc: 394.76 ng/ml

Instrument :
 ECD_O
 ClientSampleId :
 18-B7-TP-(9.5-12)



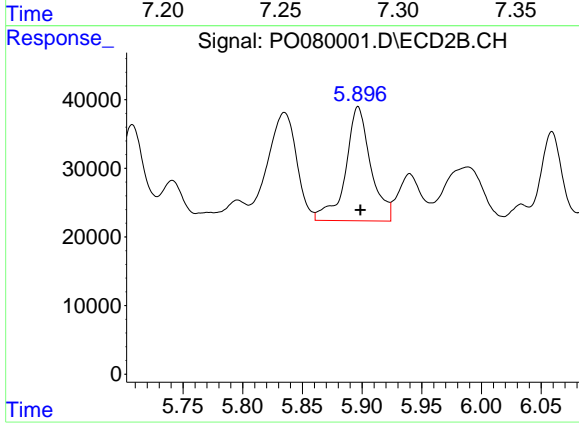
#23 AR-1248-3

R.T.: 5.708 min
 Delta R.T.: -0.003 min
 Response: 183953
 Conc: 221.66 ng/ml



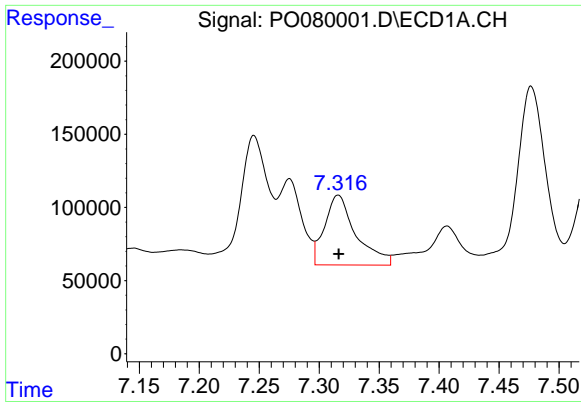
#24 AR-1248-4

R.T.: 7.275 min
 Delta R.T.: -0.002 min
 Response: 784456
 Conc: 335.11 ng/ml



#24 AR-1248-4

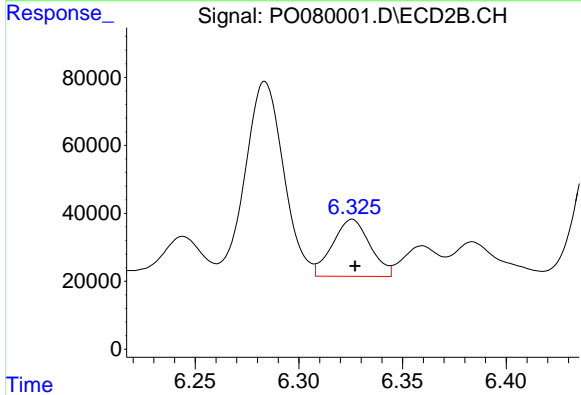
R.T.: 5.897 min
 Delta R.T.: -0.002 min
 Response: 243941
 Conc: 258.16 ng/ml



#25 AR-1248-5

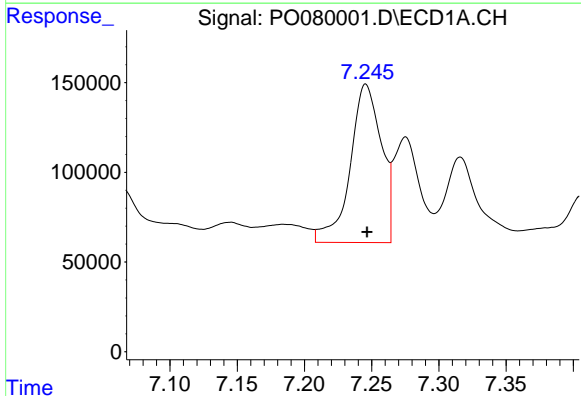
R.T.: 7.316 min
 Delta R.T.: 0.000 min
 Response: 870051
 Conc: 382.61 ng/ml

Instrument :
 ECD_O
 ClientSampleId :
 18-B7-TP-(9.5-12)



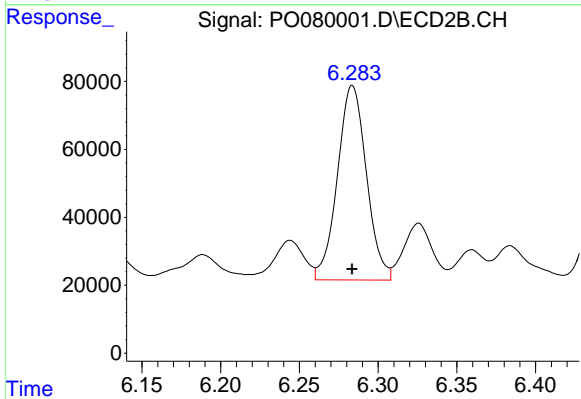
#25 AR-1248-5

R.T.: 6.326 min
 Delta R.T.: -0.002 min
 Response: 211416
 Conc: 230.58 ng/ml



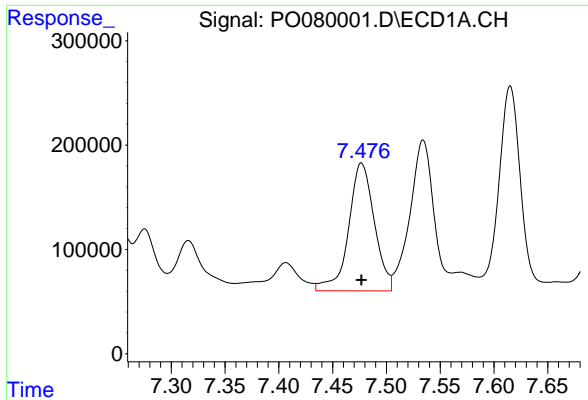
#26 AR-1254-1

R.T.: 7.246 min
 Delta R.T.: 0.000 min
 Response: 1430749
 Conc: 654.99 ng/ml



#26 AR-1254-1

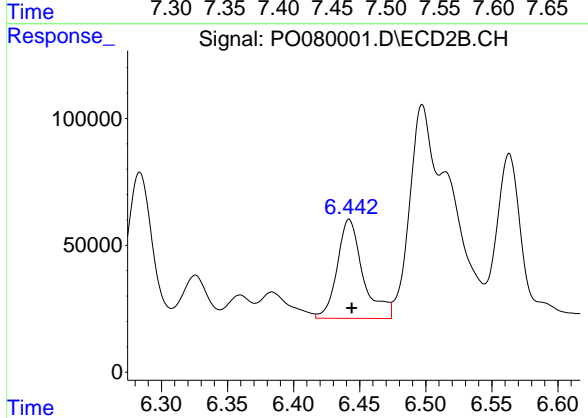
R.T.: 6.284 min
 Delta R.T.: 0.000 min
 Response: 734795
 Conc: 541.86 ng/ml



#27 AR-1254-2

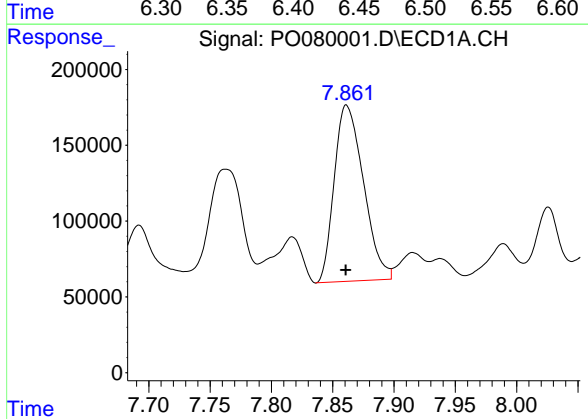
R.T.: 7.477 min
 Delta R.T.: 0.000 min
 Response: 2045708
 Conc: 622.98 ng/ml

Instrument :
 ECD_O
 ClientSampleId :
 18-B7-TP-(9.5-12)



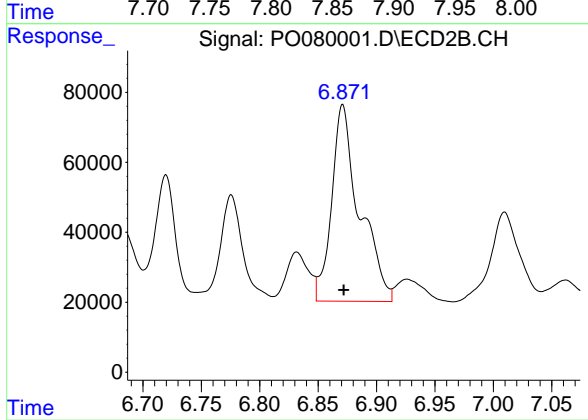
#27 AR-1254-2

R.T.: 6.442 min
 Delta R.T.: -0.002 min
 Response: 531647
 Conc: 443.39 ng/ml



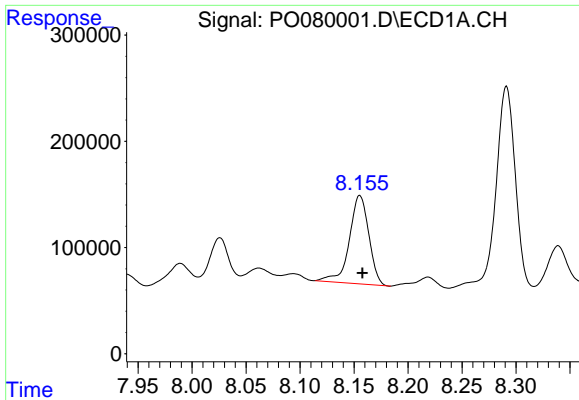
#28 AR-1254-3

R.T.: 7.862 min
 Delta R.T.: 0.001 min
 Response: 1925888
 Conc: 559.34 ng/ml



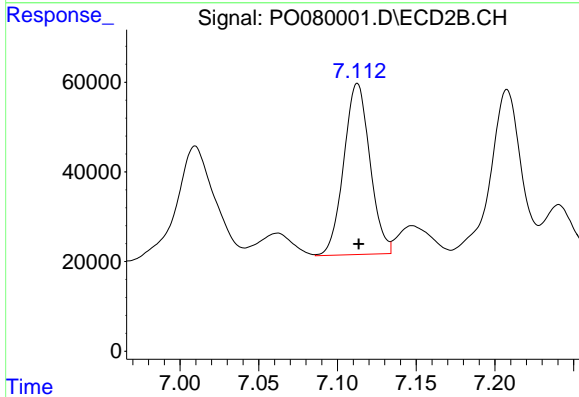
#28 AR-1254-3

R.T.: 6.871 min
 Delta R.T.: 0.000 min
 Response: 934008
 Conc: 499.18 ng/ml

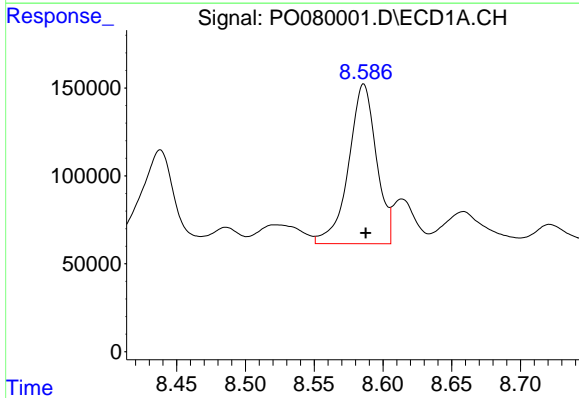


#29 AR-1254-4
 R.T.: 8.155 min
 Delta R.T.: -0.002 min
 Response: 1046495
 Conc: 411.46 ng/ml

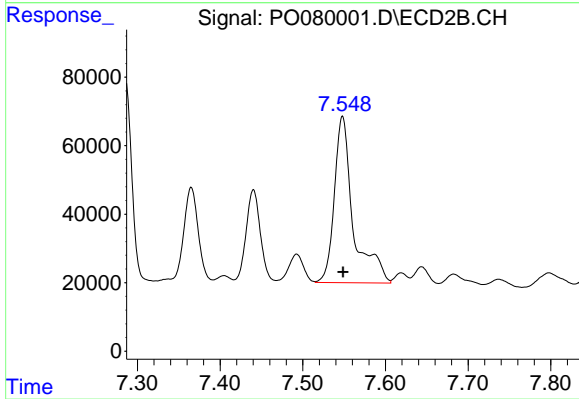
Instrument :
 ECD_O
ClientSampleId :
 18-B7-TP-(9.5-12)



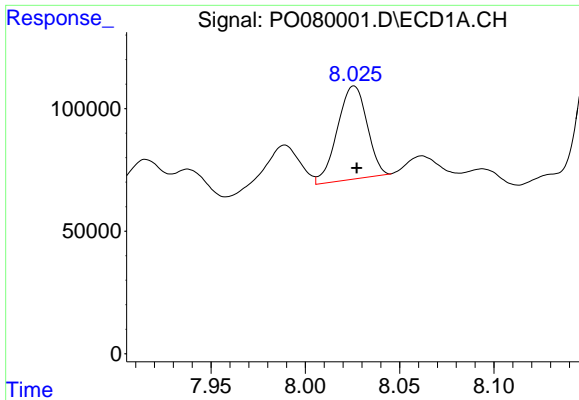
#29 AR-1254-4
 R.T.: 7.113 min
 Delta R.T.: 0.000 min
 Response: 441526
 Conc: 372.95 ng/ml



#30 AR-1254-5
 R.T.: 8.586 min
 Delta R.T.: -0.002 min
 Response: 1275001
 Conc: 479.42 ng/ml



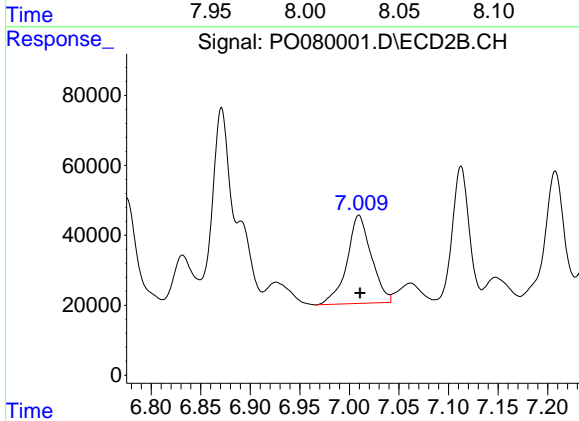
#30 AR-1254-5
 R.T.: 7.548 min
 Delta R.T.: 0.000 min
 Response: 776895
 Conc: 484.98 ng/ml



#31 AR-1260-1

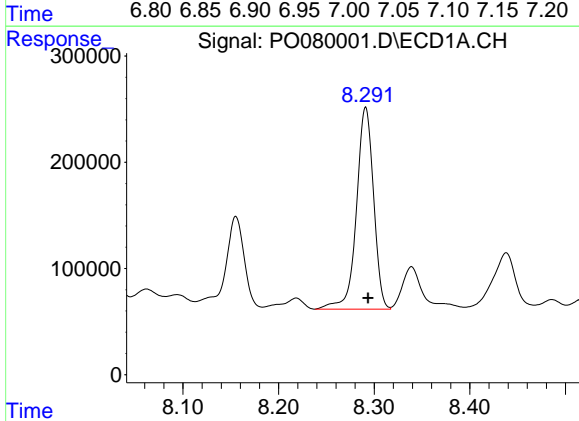
R.T.: 8.026 min
 Delta R.T.: -0.002 min
 Response: 416134
 Conc: 169.61 ng/ml

Instrument :
 ECD_O
ClientSampled :
 18-B7-TP-(9.5-12)



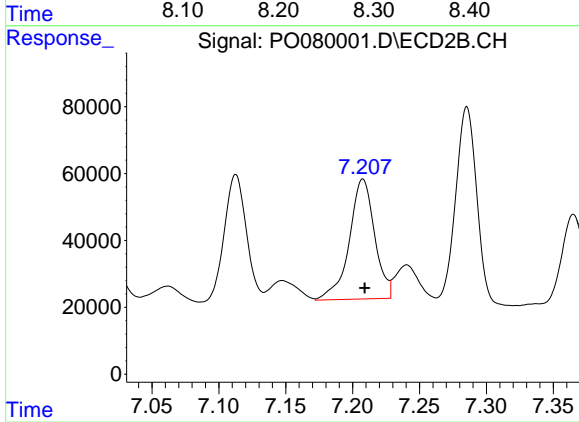
#31 AR-1260-1

R.T.: 7.010 min
 Delta R.T.: -0.001 min
 Response: 430521
 Conc: 332.61 ng/ml



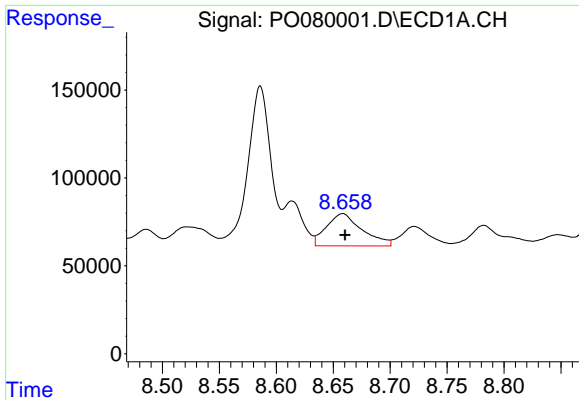
#32 AR-1260-2

R.T.: 8.291 min
 Delta R.T.: -0.002 min
 Response: 2365676
 Conc: 769.78 ng/ml



#32 AR-1260-2

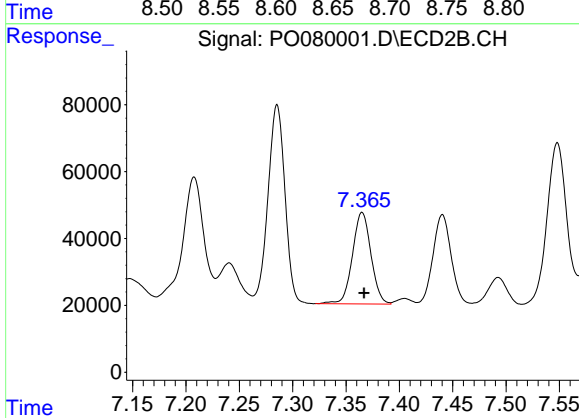
R.T.: 7.208 min
 Delta R.T.: -0.001 min
 Response: 473437
 Conc: 309.48 ng/ml



#33 AR-1260-3

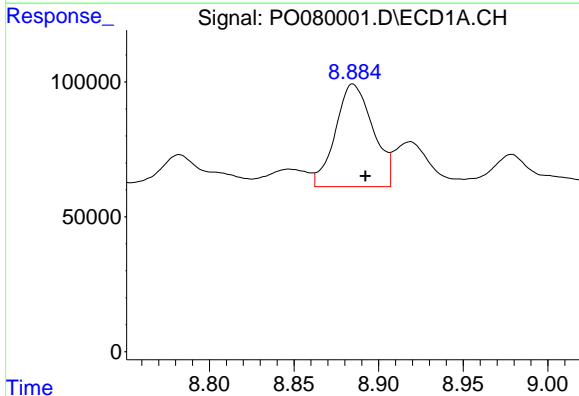
R.T.: 8.658 min
 Delta R.T.: -0.002 min
 Response: 401018
 Conc: 180.86 ng/ml

Instrument :
 ECD_O
 ClientSampleId :
 18-B7-TP-(9.5-12)



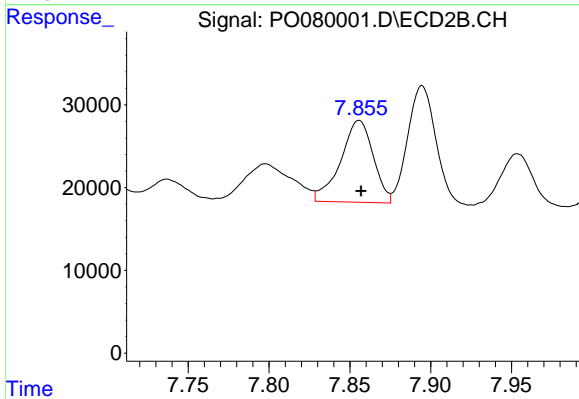
#33 AR-1260-3

R.T.: 7.365 min
 Delta R.T.: -0.002 min
 Response: 331681
 Conc: 227.17 ng/ml



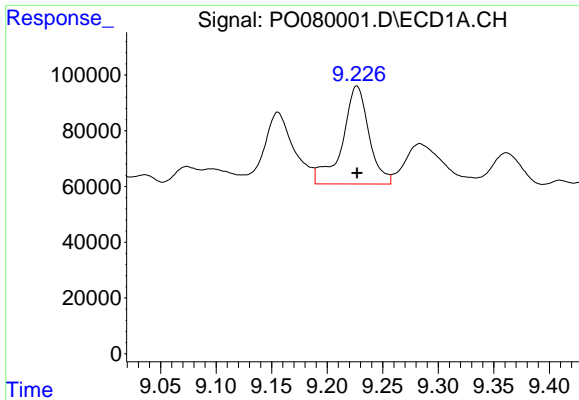
#34 AR-1260-4

R.T.: 8.885 min
 Delta R.T.: -0.007 min
 Response: 588743
 Conc: 229.34 ng/ml



#34 AR-1260-4

R.T.: 7.856 min
 Delta R.T.: -0.001 min
 Response: 139071
 Conc: 117.36 ng/ml

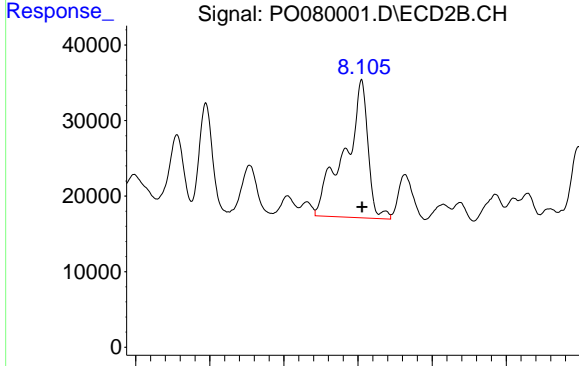


#35 AR-1260-5

R.T.: 9.227 min
 Delta R.T.: 0.000 min
 Response: 588982
 Conc: 115.19 ng/ml

Instrument :
 ECD_O
 ClientSampleId :
 18-B7-TP-(9.5-12)

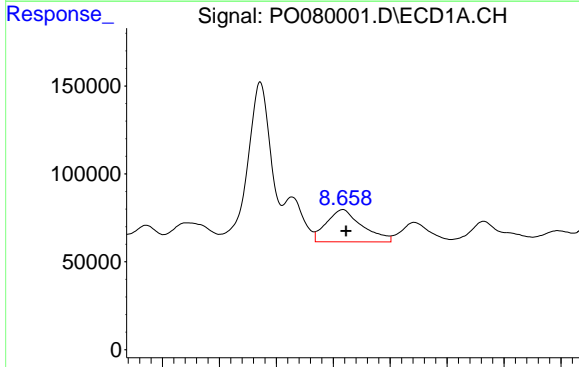
Time 9.05 9.10 9.15 9.20 9.25 9.30 9.35 9.40



#35 AR-1260-5

R.T.: 8.105 min
 Delta R.T.: 0.000 min
 Response: 399303
 Conc: 151.16 ng/ml

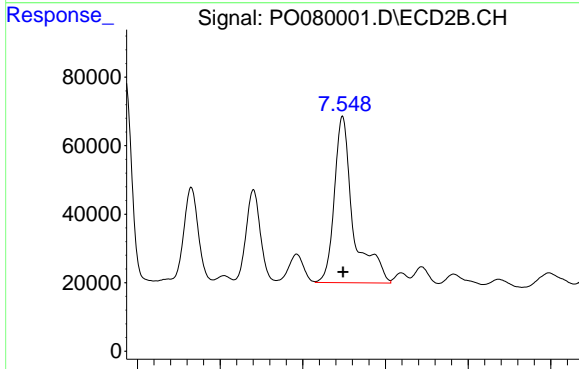
Time 7.80 7.90 8.00 8.10 8.20 8.30



#36 AR-1262-1

R.T.: 8.658 min
 Delta R.T.: -0.003 min
 Response: 401018
 Conc: 125.41 ng/ml

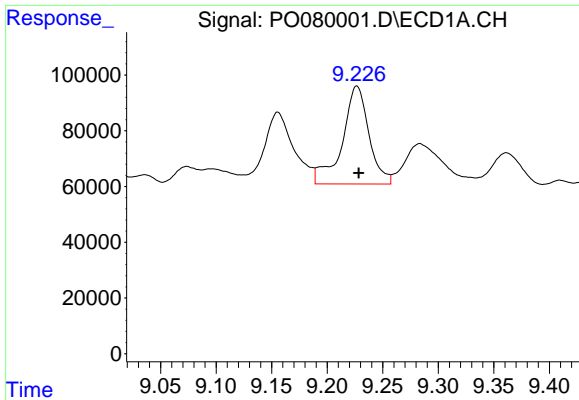
Time 8.50 8.55 8.60 8.65 8.70 8.75 8.80



#36 AR-1262-1

R.T.: 7.548 min
 Delta R.T.: 0.000 min
 Response: 776895
 Conc: 922.95 ng/ml

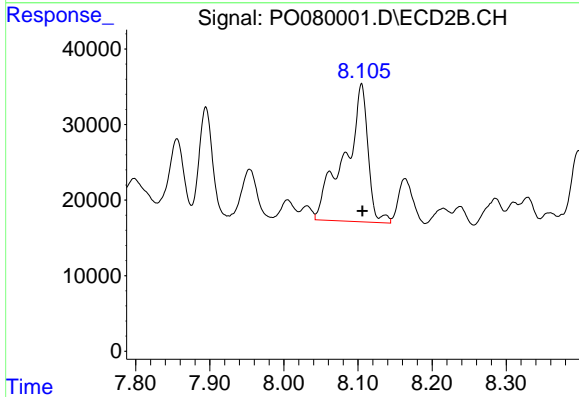
Time 7.30 7.40 7.50 7.60 7.70 7.80



#37 AR-1262-2

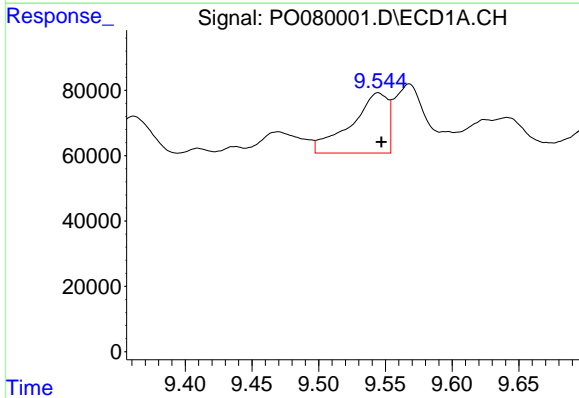
R.T.: 9.227 min
 Delta R.T.: -0.002 min
 Response: 588982
 Conc: 108.75 ng/ml

Instrument :
 ECD_O
 ClientSampleId :
 18-B7-TP-(9.5-12)



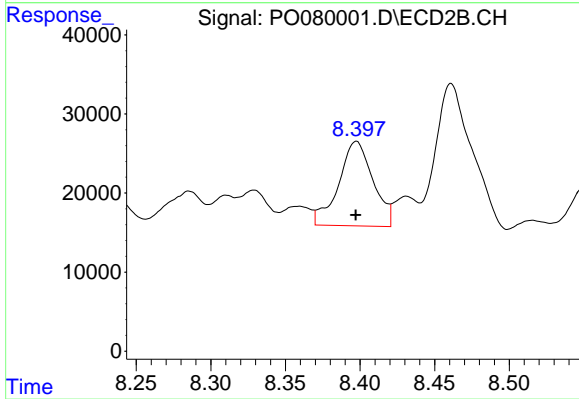
#37 AR-1262-2

R.T.: 8.105 min
 Delta R.T.: -0.001 min
 Response: 399303
 Conc: 148.71 ng/ml



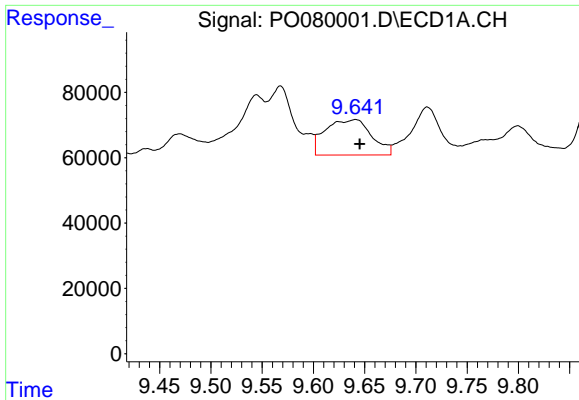
#38 AR-1262-3

R.T.: 9.545 min
 Delta R.T.: -0.002 min
 Response: 355700
 Conc: 94.05 ng/ml



#38 AR-1262-3

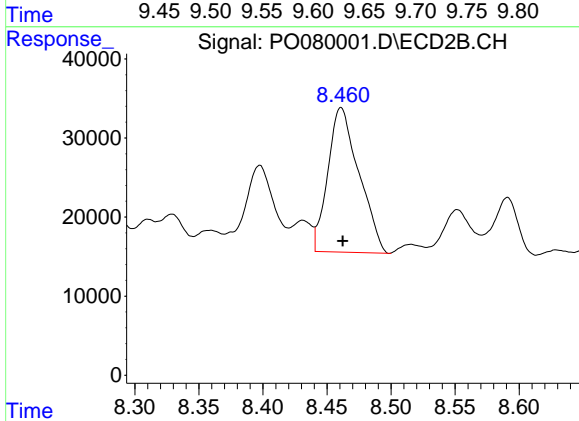
R.T.: 8.397 min
 Delta R.T.: 0.000 min
 Response: 171530
 Conc: 154.44 ng/ml



#39 AR-1262-4

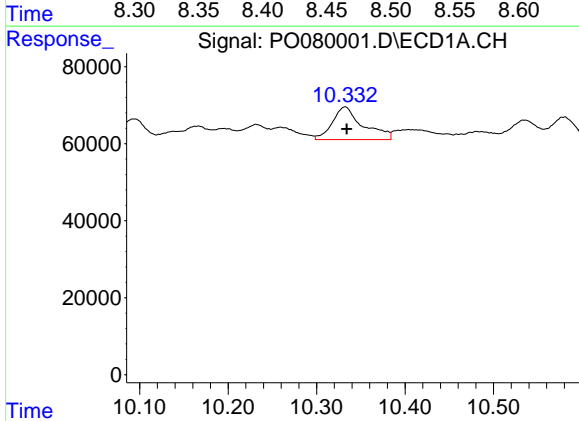
R.T.: 9.641 min
 Delta R.T.: -0.005 min
 Response: 339353
 Conc: 120.10 ng/ml

Instrument :
 ECD_O
 ClientSampled :
 18-B7-TP-(9.5-12)



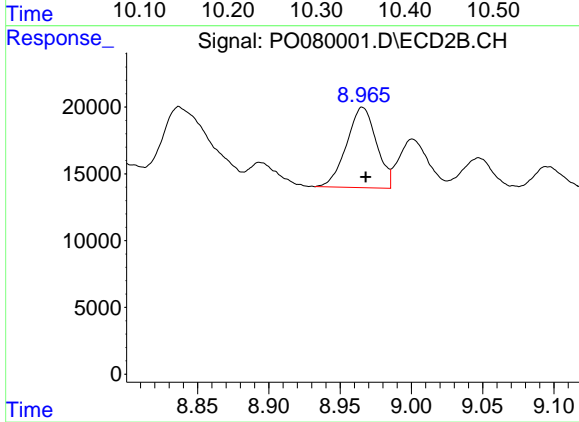
#39 AR-1262-4

R.T.: 8.461 min
 Delta R.T.: -0.001 min
 Response: 308777
 Conc: 154.43 ng/ml



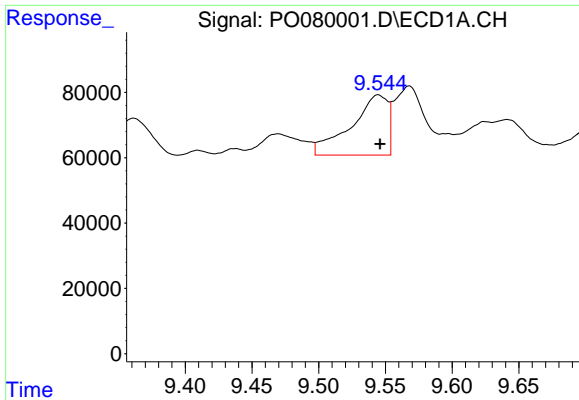
#40 AR-1262-5

R.T.: 10.332 min
 Delta R.T.: -0.002 min
 Response: 203271
 Conc: 106.90 ng/ml



#40 AR-1262-5

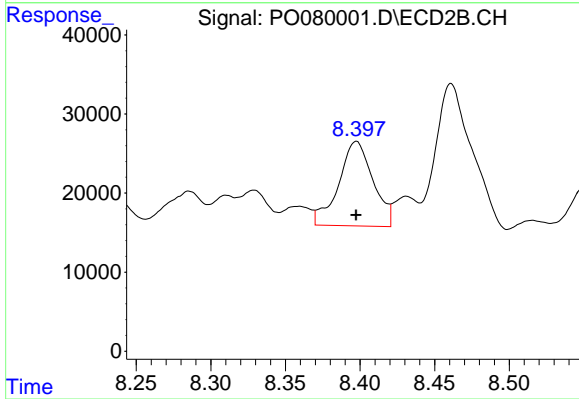
R.T.: 8.966 min
 Delta R.T.: -0.002 min
 Response: 87763
 Conc: 89.97 ng/ml



#41 AR-1268-1

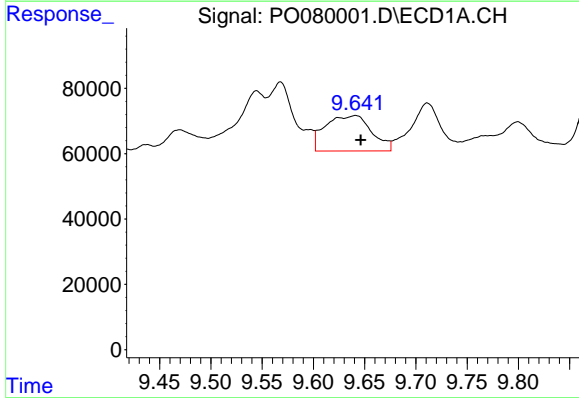
R.T.: 9.545 min
 Delta R.T.: -0.001 min
 Response: 355700
 Conc: 54.94 ng/ml

Instrument :
 ECD_O
 ClientSampleId :
 18-B7-TP-(9.5-12)



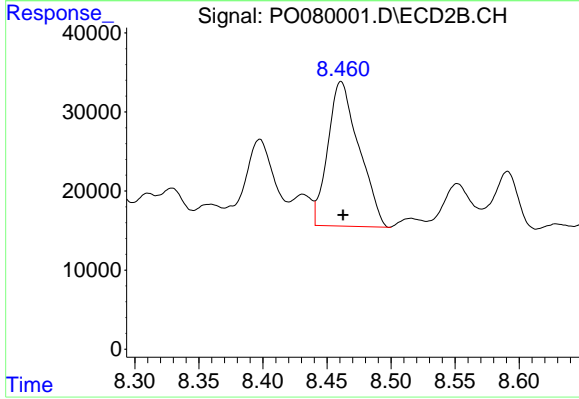
#41 AR-1268-1

R.T.: 8.397 min
 Delta R.T.: 0.000 min
 Response: 171530
 Conc: 56.45 ng/ml



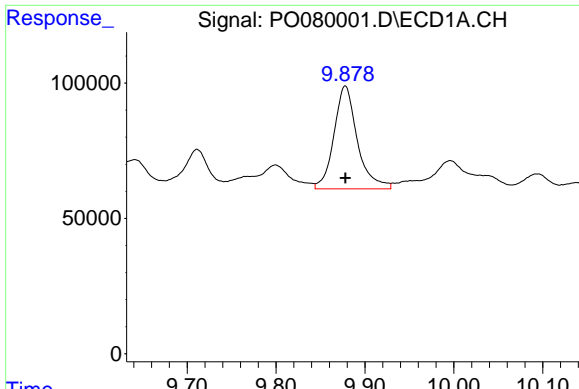
#42 AR-1268-2

R.T.: 9.641 min
 Delta R.T.: -0.006 min
 Response: 339353
 Conc: 57.03 ng/ml



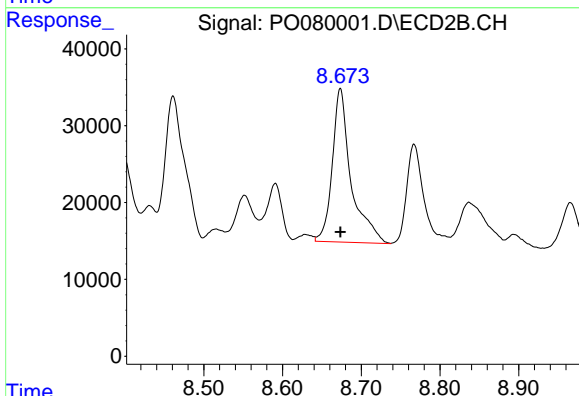
#42 AR-1268-2

R.T.: 8.461 min
 Delta R.T.: -0.002 min
 Response: 308777
 Conc: 113.48 ng/ml

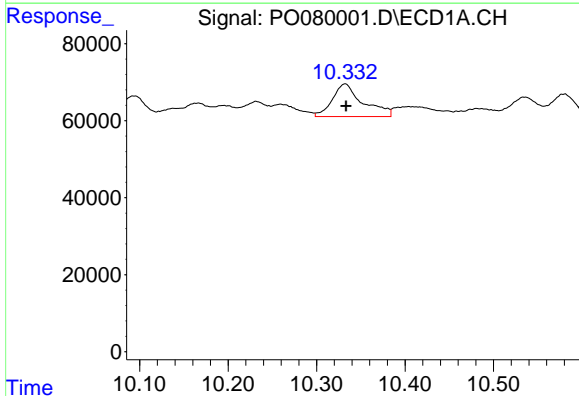


#43 AR-1268-3
 R.T.: 9.878 min
 Delta R.T.: 0.000 min
 Response: 696471
 Conc: 138.61 ng/ml

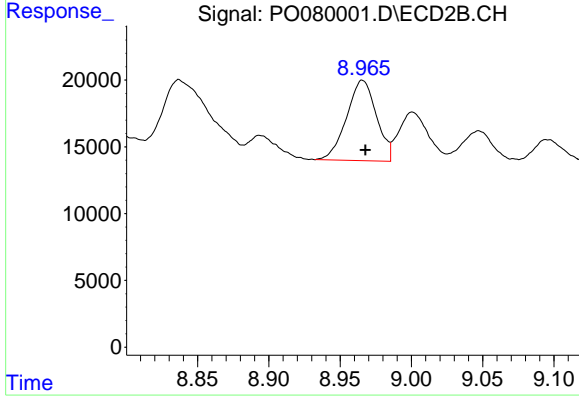
Instrument :
 ECD_O
 ClientSampleId :
 18-B7-TP-(9.5-12)



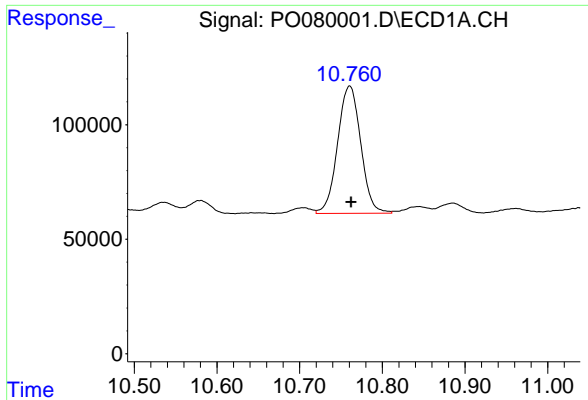
#43 AR-1268-3
 R.T.: 8.674 min
 Delta R.T.: 0.000 min
 Response: 331679
 Conc: 143.08 ng/ml



#44 AR-1268-4
 R.T.: 10.332 min
 Delta R.T.: -0.001 min
 Response: 203271
 Conc: 88.47 ng/ml



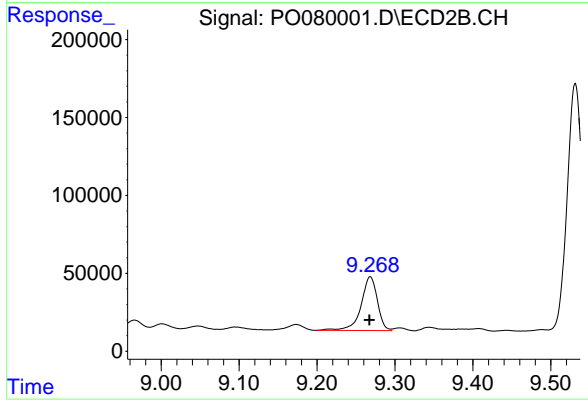
#44 AR-1268-4
 R.T.: 8.966 min
 Delta R.T.: -0.002 min
 Response: 87763
 Conc: 81.97 ng/ml



#45 AR-1268-5

R.T.: 10.760 min
Delta R.T.: -0.002 min
Response: 1081704
Conc: 64.88 ng/ml

Instrument :
ECD_O
ClientSampled :
18-B7-TP-(9.5-12)



#45 AR-1268-5

R.T.: 9.268 min
Delta R.T.: 0.001 min
Response: 506121
Conc: 72.88 ng/ml