

Data Path : Z:\pestpcbsrv\HPCHEM1\ECD_0\Data\P0073021\
 Data File : P0080014.D
 Signal(s) : Signal #1: ECD1A.CH Signal #2: ECD2B.CH
 Acq On : 30 Jul 2021 16:01
 Operator : DD\AJ
 Sample : PB138077BL
 Misc :
 ALS Vial : 21 Sample Multiplier: 1

Instrument :
 ECD_0
 ClientSampleId :
 PB138077BL

Integration File signal 1: autoint1.e
 Integration File signal 2: autoint2.e
 Quant Time: Aug 02 01:52:37 2021
 Quant Method : Z:\pestpcbsrv\HPCHEM1\ECD_0\methods\P0072821.M
 Quant Title : GC EXTRACTABLES
 QLast Update : Wed Jul 28 18:45:36 2021
 Response via : Initial Calibration
 Integrator: ChemStation 6890 Scale Mode: Small noise peaks clipped

Volume Inj. : 2 µl
 Signal #1 Phase : ZB-MR1 Signal #2 Phase: ZB-MR2
 Signal #1 Info : 30Mx0.32mmx 0.50µ Signal #2 Info : 30M x 0.32mm x 0.25µm

Compound	RT#1	RT#2	Resp#1	Resp#2	ng/ml	ng/ml

System Monitoring Compounds						
1) SA Tetrachlo...	5.000	4.118	1415717	549216	23.494	23.982
2) SA Decachlor...	11.112	9.531	1129900	519954	24.087	25.020
Target Compounds						
28) L6 AR-1254-3	7.877f	0.000	600689	0	174.459	N.D. #
32) L7 AR-1260-2	0.000	7.188f	0	222986	N.D.	145.766 #

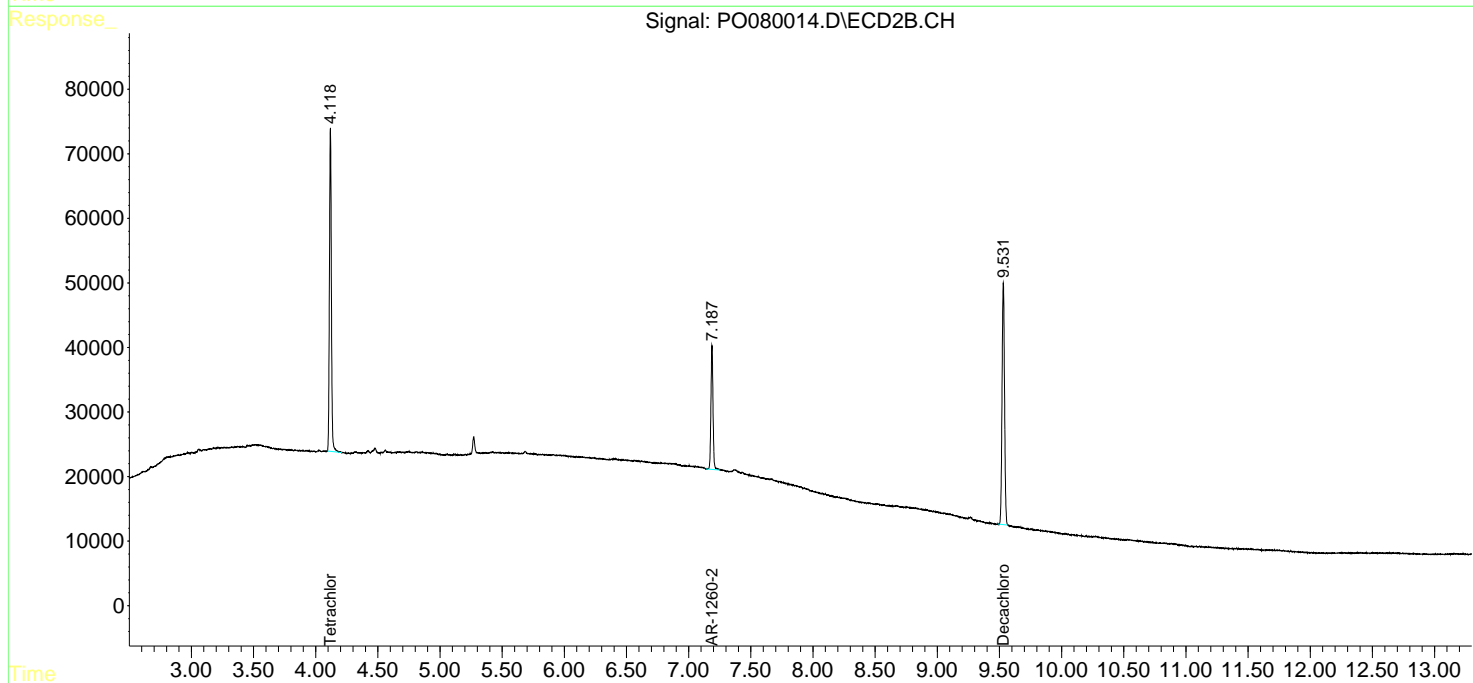
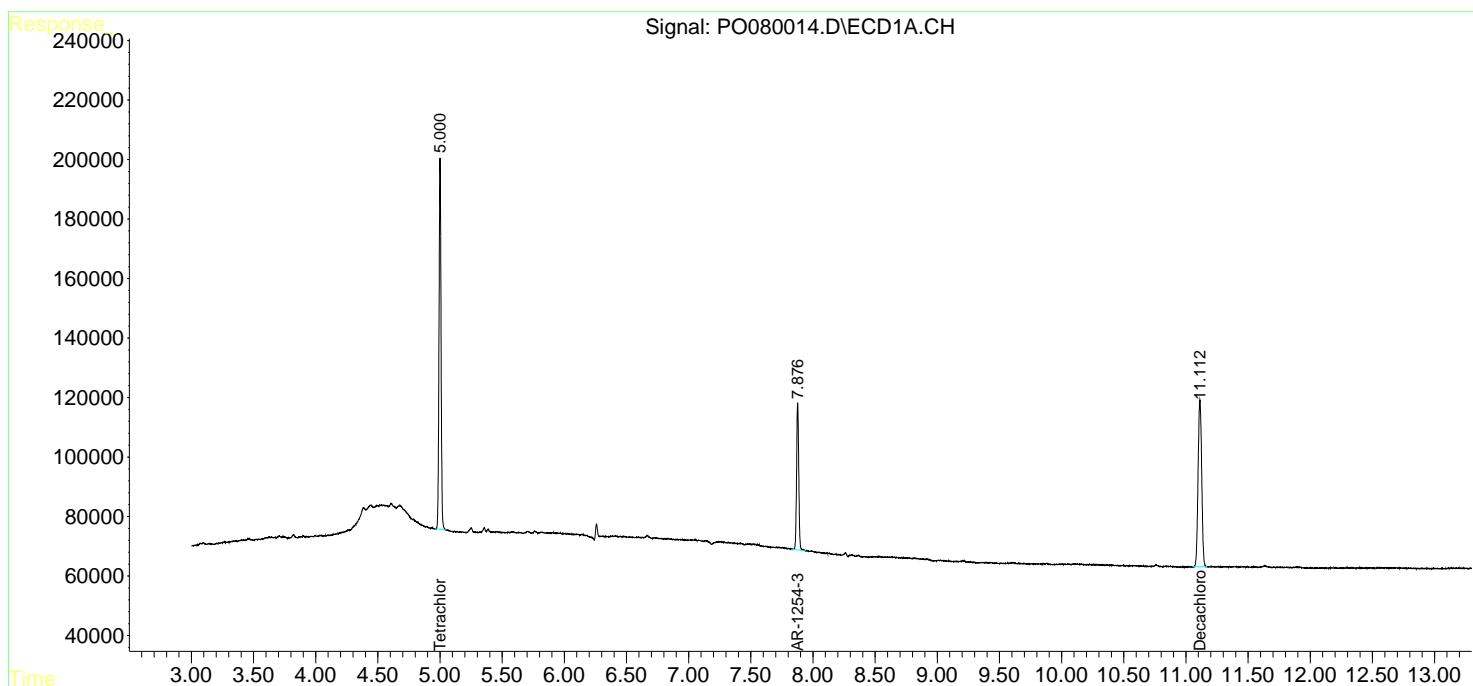
(f)=RT Delta > 1/2 Window (#)=Amounts differ by > 25% (m)=manual int.

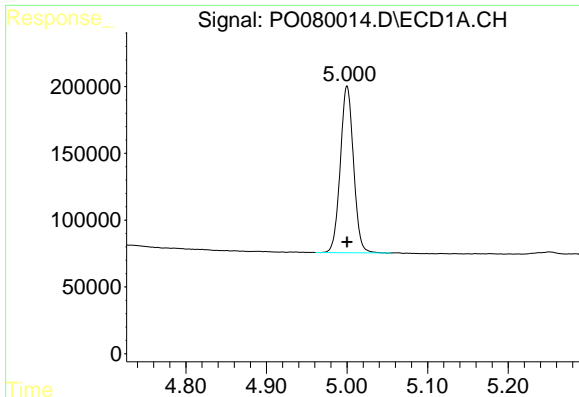
Data Path : Z:\pestpcbsrv\HPCHEM1\ECD_0\Data\P0073021\
 Data File : P0080014.D
 Signal(s) : Signal #1: ECD1A.CH Signal #2: ECD2B.CH
 Acq On : 30 Jul 2021 16:01
 Operator : DD\AJ
 Sample : PB138077BL
 Misc :
 ALS Vial : 21 Sample Multiplier: 1

Instrument :
 ECD_O
 ClientSampled :
 PB138077BL

Integration File signal 1: autoint1.e
 Integration File signal 2: autoint2.e
 Quant Time: Aug 02 01:52:37 2021
 Quant Method : Z:\pestpcbsrv\HPCHEM1\ECD_0\methods\P0072821.M
 Quant Title : GC EXTRACTABLES
 QLast Update : Wed Jul 28 18:45:36 2021
 Response via : Initial Calibration
 Integrator: ChemStation 6890 Scale Mode: Small noise peaks clipped

Volume Inj. : 2 µl
 Signal #1 Phase : ZB-MR1 Signal #2 Phase: ZB-MR2
 Signal #1 Info : 30Mx0.32mmx 0.50µ Signal #2 Info : 30M x 0.32mm x 0.25µm

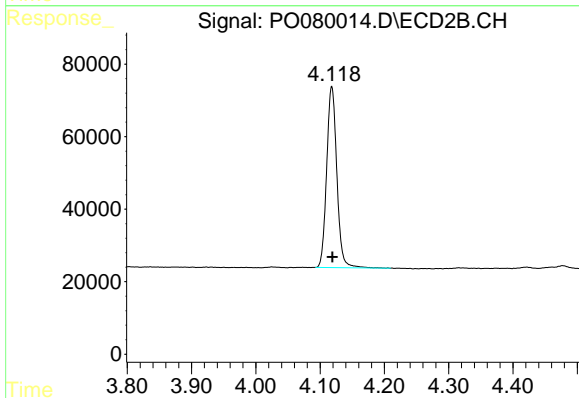




#1 Tetrachloro-m-xylene

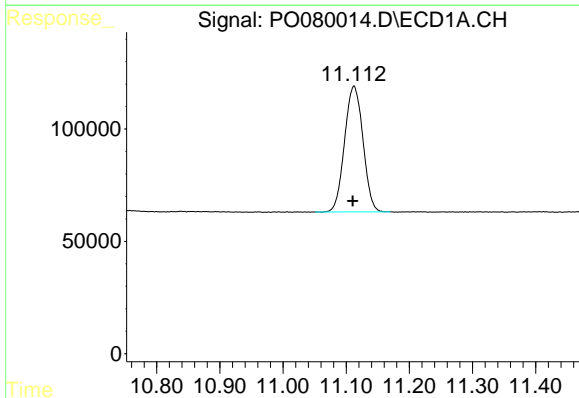
R.T.: 5.000 min
 Delta R.T.: 0.000 min
 Response: 1415717
 Conc: 23.49 ng/ml

Instrument :
 ECD_O
 ClientSampleId :
 PB138077BL



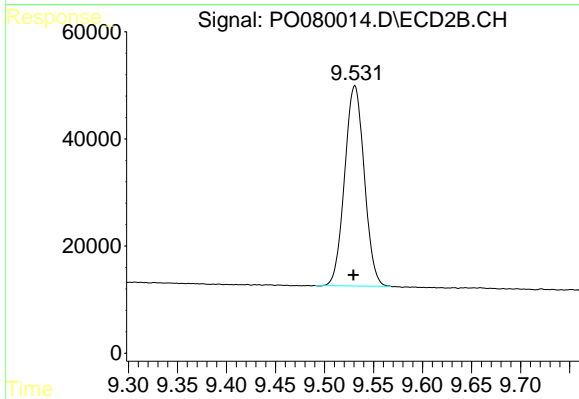
#1 Tetrachloro-m-xylene

R.T.: 4.118 min
 Delta R.T.: -0.001 min
 Response: 549216
 Conc: 23.98 ng/ml



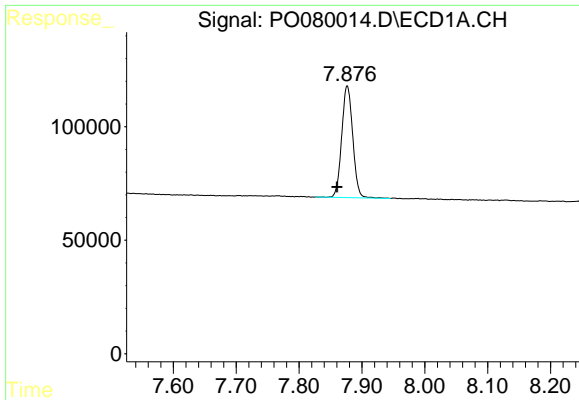
#2 Decachlorobiphenyl

R.T.: 11.112 min
 Delta R.T.: 0.002 min
 Response: 1129900
 Conc: 24.09 ng/ml



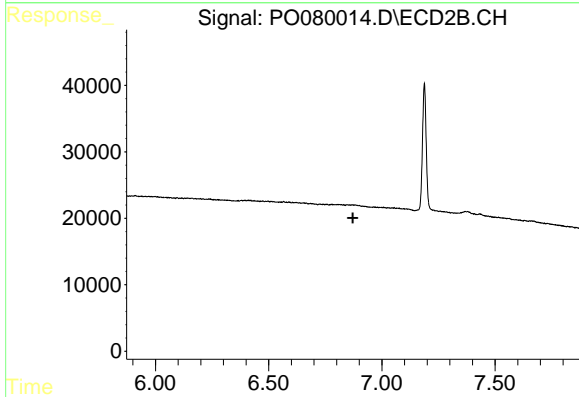
#2 Decachlorobiphenyl

R.T.: 9.531 min
 Delta R.T.: 0.002 min
 Response: 519954
 Conc: 25.02 ng/ml

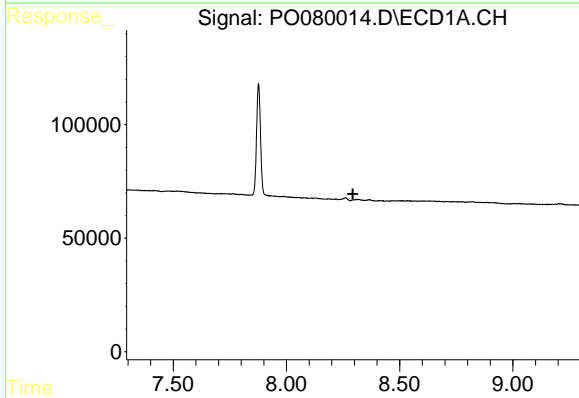


#28 AR-1254-3
 R.T.: 7.877 min
 Delta R.T.: 0.016 min
 Response: 600689
 Conc: 174.46 ng/ml

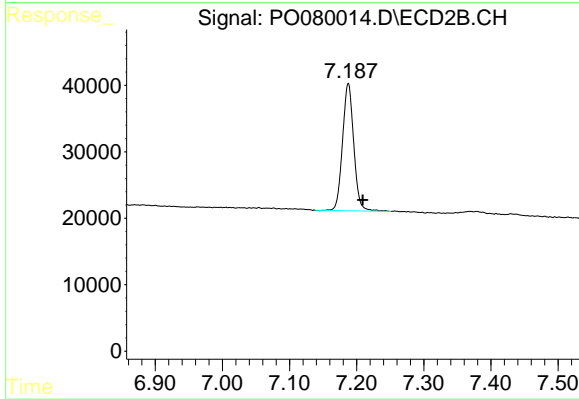
Instrument :
 ECD_O
 ClientSampled :
 PB138077BL



#28 AR-1254-3
 R.T.: 0.000 min
 Exp R.T. : 6.872 min
 Response: 0
 Conc: N.D.



#32 AR-1260-2
 R.T.: 0.000 min
 Exp R.T. : 8.294 min
 Response: 0
 Conc: N.D.



#32 AR-1260-2
 R.T.: 7.188 min
 Delta R.T.: -0.022 min
 Response: 222986
 Conc: 145.77 ng/ml