

Data Path : Z:\pestpcbsrv\HPCHEM1\ECD_0\Data\P0073021\
 Data File : P0080015.D
 Signal(s) : Signal #1: ECD1A.CH Signal #2: ECD2B.CH
 Acq On : 30 Jul 2021 16:18
 Operator : DD\AJ
 Sample : PB138077BS
 Misc :
 ALS Vial : 22 Sample Multiplier: 1

Instrument :
 ECD_O
 ClientSampleId :
 PB138077BS

Integration File signal 1: autoint1.e
 Integration File signal 2: autoint2.e
 Quant Time: Aug 02 01:52:59 2021
 Quant Method : Z:\pestpcbsrv\HPCHEM1\ECD_0\methods\P0072821.M
 Quant Title : GC EXTRACTABLES
 QLast Update : Wed Jul 28 18:45:36 2021
 Response via : Initial Calibration
 Integrator: ChemStation 6890 Scale Mode: Small noise peaks clipped

Volume Inj. : 2 µl
 Signal #1 Phase : ZB-MR1 Signal #2 Phase: ZB-MR2
 Signal #1 Info : 30Mx0.32mmx 0.50µ Signal #2 Info : 30M x 0.32mm x 0.25µm

Compound	RT#1	RT#2	Resp#1	Resp#2	ng/ml	ng/ml
System Monitoring Compounds						
1) SA Tetrachlo...	4.999	4.119	1359259	505142	22.557	22.058
2) SA Decachlor...	11.112	9.531	1081598	494455	23.057	23.793
Target Compounds						
3) L1 AR-1016-1	6.330	5.397	1027174	426168	467.271	453.408
4) L1 AR-1016-2	6.354	5.417	1422224	572104	466.146	449.691
5) L1 AR-1016-3	6.420	5.613	872159	312650	463.467	443.463
6) L1 AR-1016-4	6.528	5.664	715615	262531	464.116	434.463
7) L1 AR-1016-5	6.845	5.898	693895	329634	458.647	447.599
8) L2 AR-1221-1	5.249	4.380	121460	39000	188.493	135.056 #
9) L2 AR-1221-2	5.352	4.483	109971	57334	239.498	267.324
10) L2 AR-1221-3	5.440	4.574	536099	227105	347.426	349.815
11) L3 AR-1232-1	5.440	4.574	536099	227105	376.194	376.622
12) L3 AR-1232-2	6.033	5.417	747504	572104	1070.087	1017.357
13) L3 AR-1232-3	6.354	5.613	1422224	312650	1067.113	1038.489
14) L3 AR-1232-4	6.528	5.709	715615	322102	1098.827	1131.494
15) L3 AR-1232-5	6.626	5.898	565845	329634	1267.134	1097.638
16) L4 AR-1242-1	6.330	5.397	1027174	426168	616.297	598.397
17) L4 AR-1242-2	6.354	5.417	1422224	572104	618.408	590.795
18) L4 AR-1242-3	6.420	5.613	872159	312650	614.374	582.693
19) L4 AR-1242-4	6.528	5.709	715615	322102	630.632	573.626
20) L4 AR-1242-5	7.315	6.283	95203	263730	74.987	405.306 #
21) L5 AR-1248-1	6.330	5.397	1027174	426168	810.276	771.766
22) L5 AR-1248-2	6.626	5.664	565845	262531	324.574	318.649
23) L5 AR-1248-3	6.845	5.709	693895	322102	338.566	388.125
24) L5 AR-1248-4	7.275	5.898	107499	329634	45.922	348.847 #
25) L5 AR-1248-5	7.315	6.326	95203	39708	41.865	43.307
26) L6 AR-1254-1	7.245	6.283	517570	263730	236.940	194.481
27) L6 AR-1254-2	7.475	6.443	562635	261470	171.339	218.064 #
28) L6 AR-1254-3	7.873	6.889f	626043	450609	181.823	240.830 #
29) L6 AR-1254-4	8.154	7.113	178408	53000	70.146	44.768 #
30) L6 AR-1254-5	8.586	7.549	1776336	865567	667.934	540.339
31) L7 AR-1260-1	8.026	7.010	1241494	631720	506.019	488.054
32) L7 AR-1260-2	8.293	7.208	1464669	868898	476.599	567.996
33) L7 AR-1260-3	8.660	7.367	918170	701448	414.094	480.424
34) L7 AR-1260-4	8.893	7.857	1118388	511837	435.666	431.941
35) L7 AR-1260-5	9.228	8.106	2128717	1159736	416.338	439.016
36) L8 AR-1262-1	8.660	7.549	918170	865567	287.132	1028.295 #
37) L8 AR-1262-2	9.228	8.106	2128717	1159736	393.047	431.920
38) L8 AR-1262-3	9.570f	8.397	1396330	235603	369.189	212.124 #
39) L8 AR-1262-4	9.623f	8.461	755770	843479	267.471	421.866 #
40) L8 AR-1262-5	10.333	8.969	536439	275686	282.107	282.620
41) L9 AR-1268-1	9.570f	8.397	1396330	235603	215.680	77.541 #

Data Path : Z:\pestpcbsrv\HPCHEM1\ECD_0\Data\P0073021\
 Data File : P0080015.D
 Signal(s) : Signal #1: ECD1A.CH Signal #2: ECD2B.CH
 Acq On : 30 Jul 2021 16:18
 Operator : DD\AJ
 Sample : PB138077BS
 Misc :
 ALS Vial : 22 Sample Multiplier: 1

Instrument :
 ECD_0
 ClientSampleId :
 PB138077BS

Integration File signal 1: autoint1.e
 Integration File signal 2: autoint2.e
 Quant Time: Aug 02 01:52:59 2021
 Quant Method : Z:\pestpcbsrv\HPCHEM1\ECD_0\methods\P0072821.M
 Quant Title : GC EXTRACTABLES
 QLast Update : Wed Jul 28 18:45:36 2021
 Response via : Initial Calibration
 Integrator: ChemStation 6890 Scale Mode: Small noise peaks clipped

Volume Inj. : 2 µl
 Signal #1 Phase : ZB-MR1 Signal #2 Phase: ZB-MR2
 Signal #1 Info : 30Mx0.32mmx 0.50µ Signal #2 Info : 30M x 0.32mm x 0.25µm

	Compound	RT#1	RT#2	Resp#1	Resp#2	ng/ml	ng/ml
42)	L9 AR-1268-2	9.623f	8.461	755770	843479	127.008	309.996 #
43)	L9 AR-1268-3	9.878	8.674	38767	23135	7.715	9.980 #
44)	L9 AR-1268-4	10.333	8.969	536439	275686	233.471	257.502
45)	L9 AR-1268-5	10.762	9.268	175046	89946	10.499	12.951

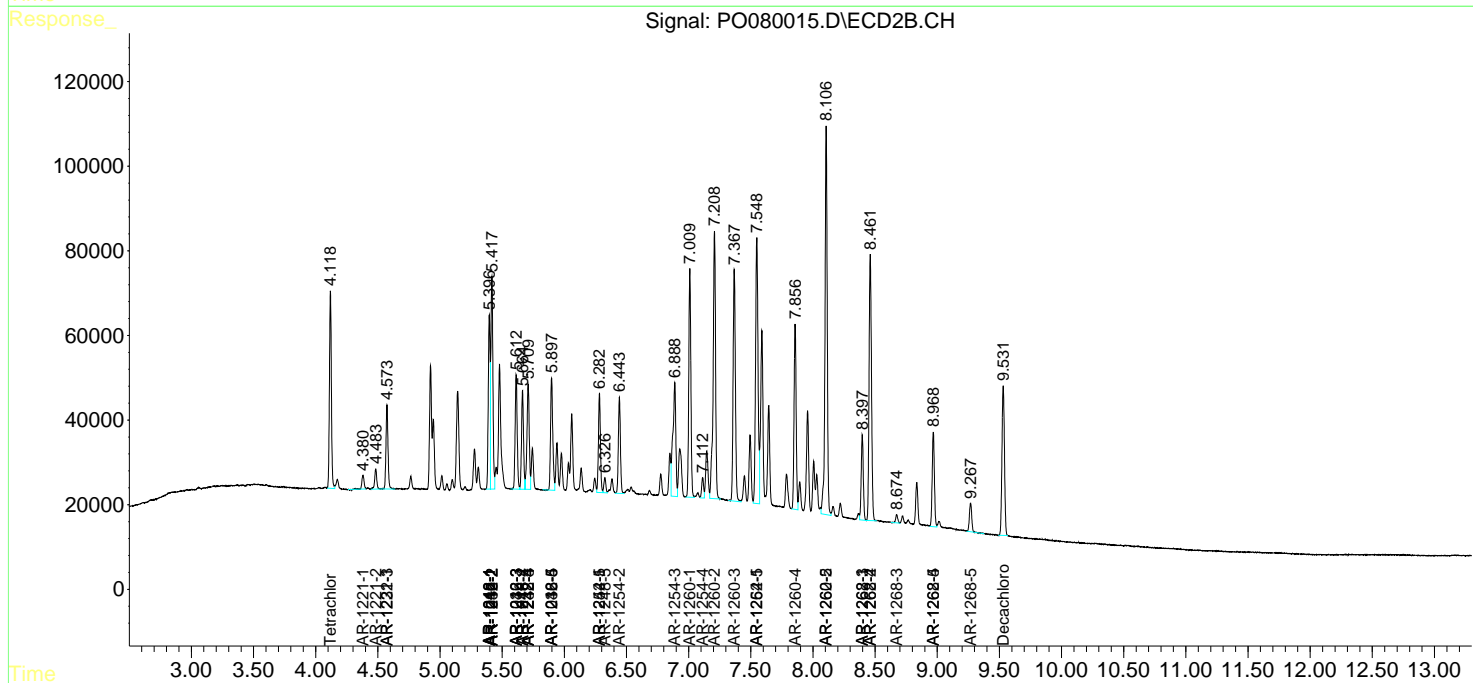
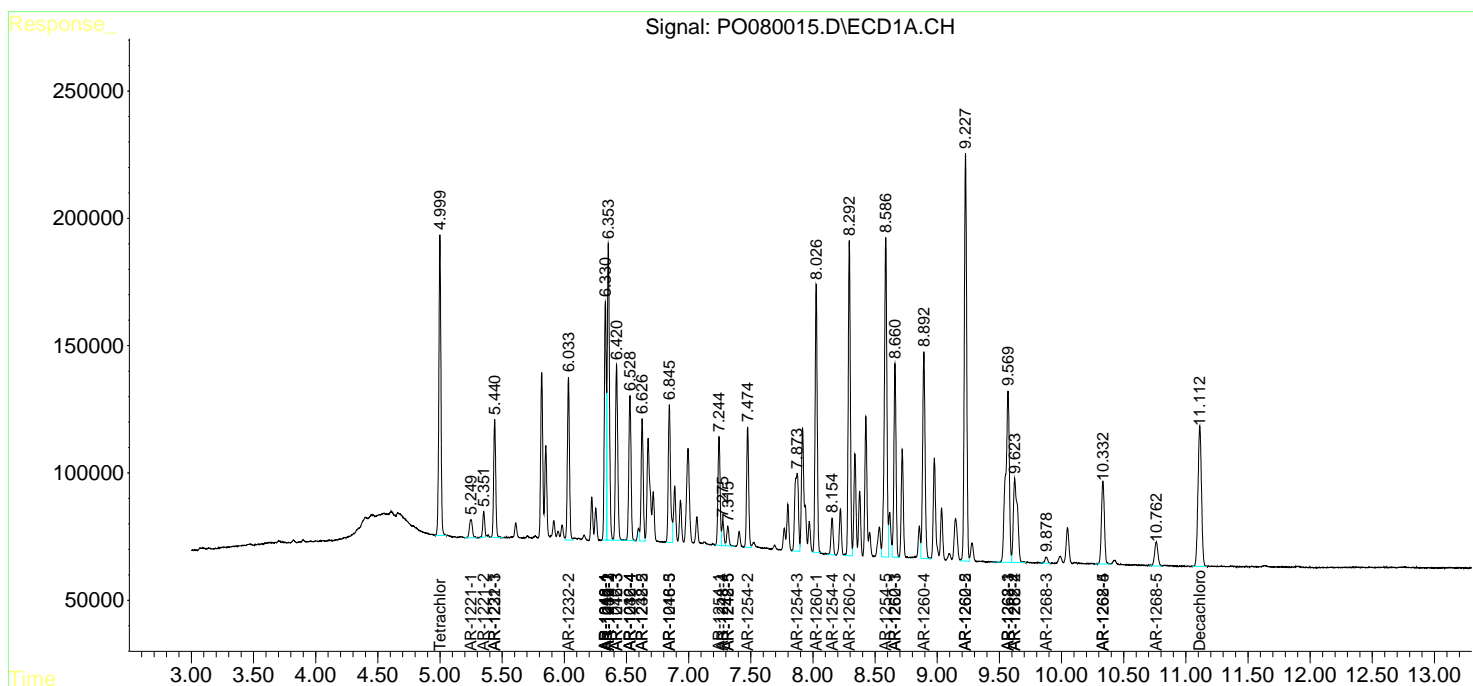
(f)=RT Delta > 1/2 Window (#)=Amounts differ by > 25% (m)=manual int.

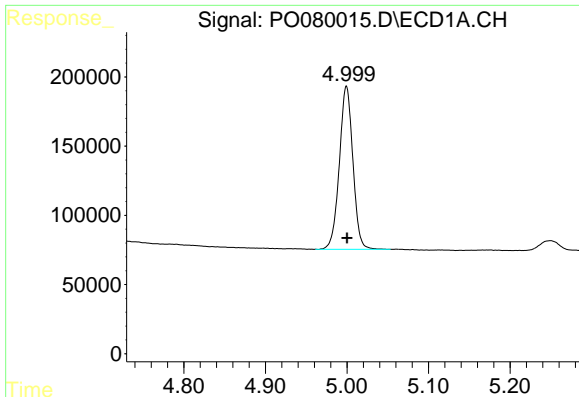
Data Path : Z:\pestpcbsrv\HPCHEM1\ECD_O\Data\P0073021\
 Data File : P0080015.D
 Signal(s) : Signal #1: ECD1A.CH Signal #2: ECD2B.CH
 Acq On : 30 Jul 2021 16:18
 Operator : DD\AJ
 Sample : PB138077BS
 Misc :
 ALS Vial : 22 Sample Multiplier: 1

Instrument :
 ECD_O
 ClientSampled :
 PB138077BS

Integration File signal 1: autoint1.e
 Integration File signal 2: autoint2.e
 Quant Time: Aug 02 01:52:59 2021
 Quant Method : Z:\pestpcbsrv\HPCHEM1\ECD_O\methods\P0072821.M
 Quant Title : GC EXTRACTABLES
 QLast Update : Wed Jul 28 18:45:36 2021
 Response via : Initial Calibration
 Integrator: ChemStation 6890 Scale Mode: Small noise peaks clipped

Volume Inj. : 2 µl
 Signal #1 Phase : ZB-MR1 Signal #2 Phase: ZB-MR2
 Signal #1 Info : 30Mx0.32mmx 0.50µ Signal #2 Info : 30M x 0.32mm x 0.25µm

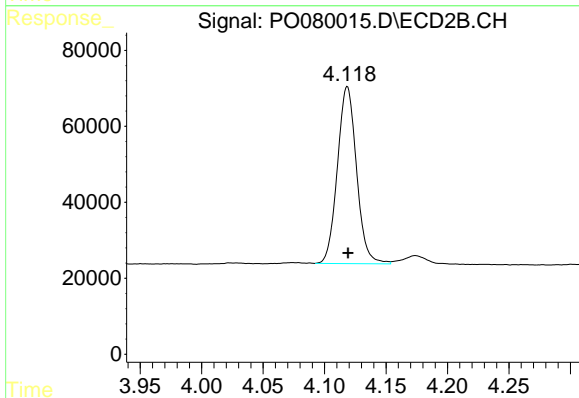




#1 Tetrachloro-m-xylene

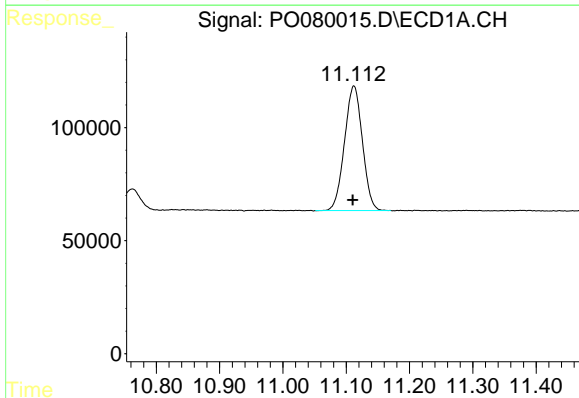
R.T.: 4.999 min
 Delta R.T.: 0.000 min
 Response: 1359259
 Conc: 22.56 ng/ml

Instrument :
 ECD_O
 ClientSampled :
 PB138077BS



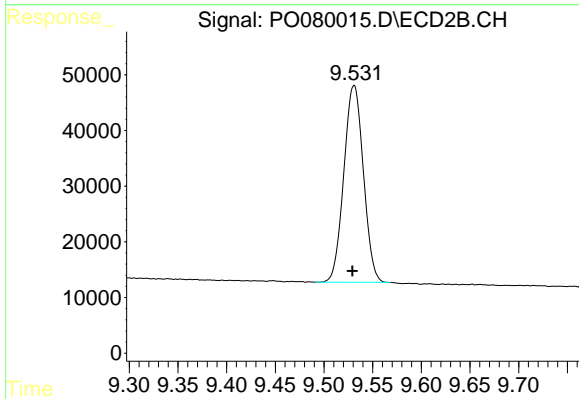
#1 Tetrachloro-m-xylene

R.T.: 4.119 min
 Delta R.T.: 0.000 min
 Response: 505142
 Conc: 22.06 ng/ml



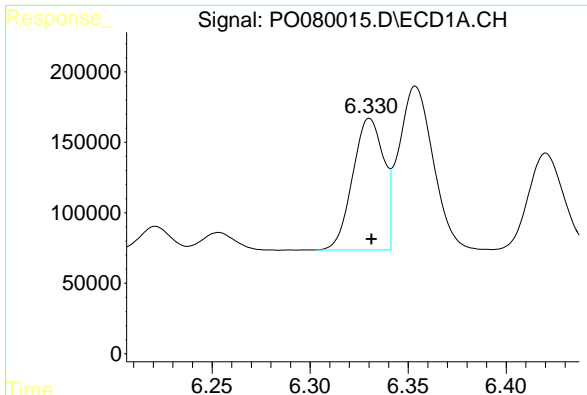
#2 Decachlorobiphenyl

R.T.: 11.112 min
 Delta R.T.: 0.002 min
 Response: 1081598
 Conc: 23.06 ng/ml



#2 Decachlorobiphenyl

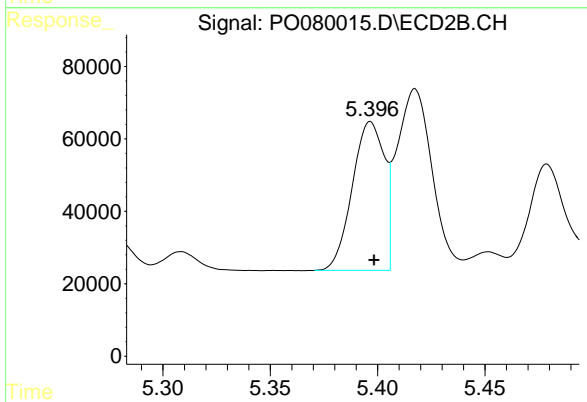
R.T.: 9.531 min
 Delta R.T.: 0.002 min
 Response: 494455
 Conc: 23.79 ng/ml



#3 AR-1016-1

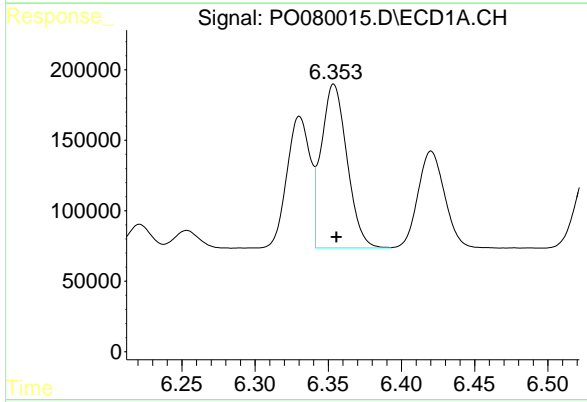
R.T.: 6.330 min
 Delta R.T.: 0.000 min
 Response: 1027174
 Conc: 467.27 ng/ml

Instrument :
 ECD_O
ClientSampled :
 PB138077BS



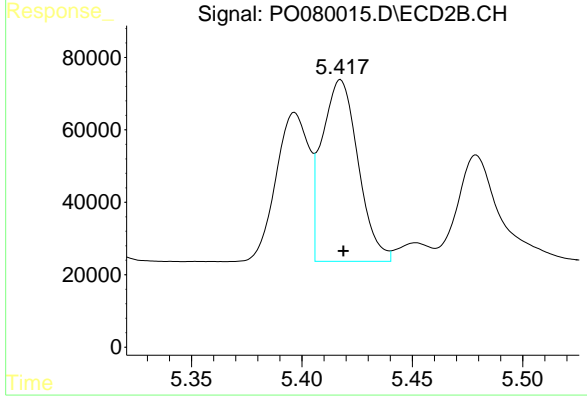
#3 AR-1016-1

R.T.: 5.397 min
 Delta R.T.: -0.002 min
 Response: 426168
 Conc: 453.41 ng/ml



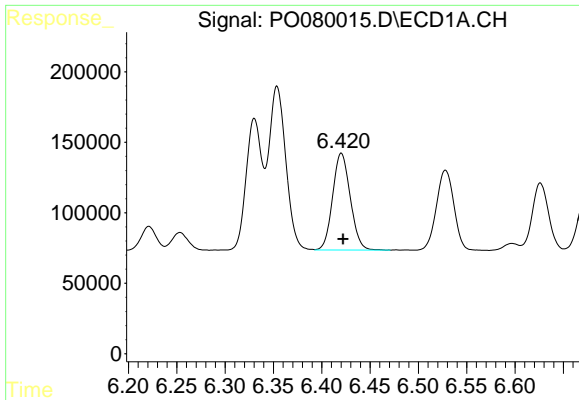
#4 AR-1016-2

R.T.: 6.354 min
 Delta R.T.: -0.002 min
 Response: 1422224
 Conc: 466.15 ng/ml



#4 AR-1016-2

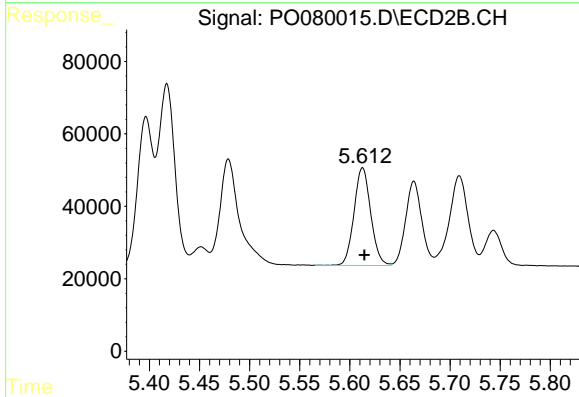
R.T.: 5.417 min
 Delta R.T.: -0.001 min
 Response: 572104
 Conc: 449.69 ng/ml



#5 AR-1016-3

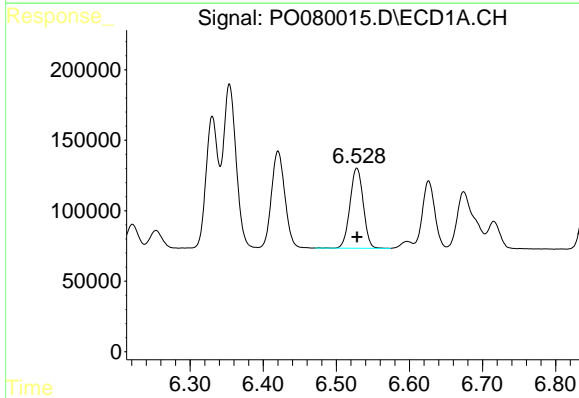
R.T.: 6.420 min
 Delta R.T.: -0.002 min
 Response: 872159
 Conc: 463.47 ng/ml

Instrument :
 ECD_O
 ClientSampleId :
 PB138077BS



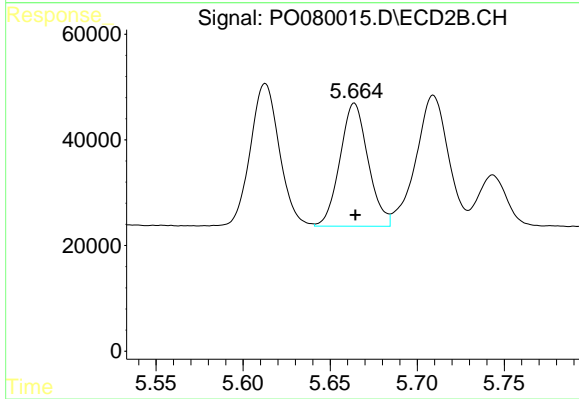
#5 AR-1016-3

R.T.: 5.613 min
 Delta R.T.: -0.002 min
 Response: 312650
 Conc: 443.46 ng/ml



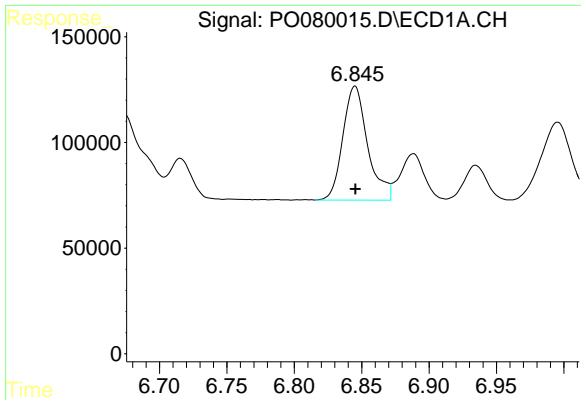
#6 AR-1016-4

R.T.: 6.528 min
 Delta R.T.: 0.000 min
 Response: 715615
 Conc: 464.12 ng/ml



#6 AR-1016-4

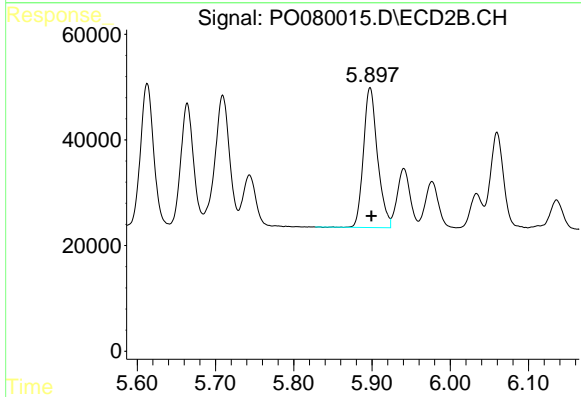
R.T.: 5.664 min
 Delta R.T.: 0.000 min
 Response: 262531
 Conc: 434.46 ng/ml



#7 AR-1016-5

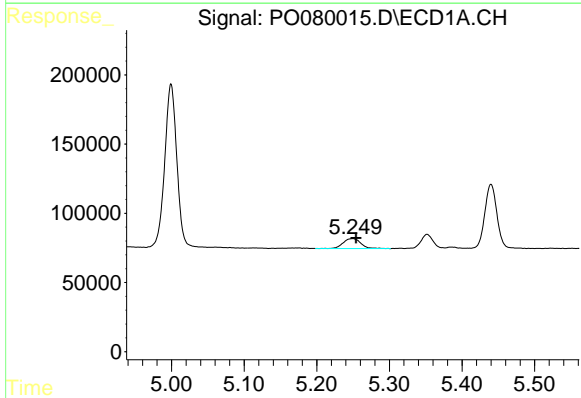
R.T.: 6.845 min
 Delta R.T.: 0.000 min
 Response: 693895
 Conc: 458.65 ng/ml

Instrument :
 ECD_O
 ClientSampleId :
 PB138077BS



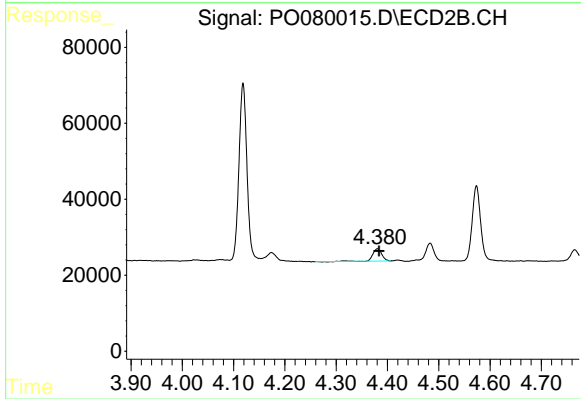
#7 AR-1016-5

R.T.: 5.898 min
 Delta R.T.: -0.002 min
 Response: 329634
 Conc: 447.60 ng/ml



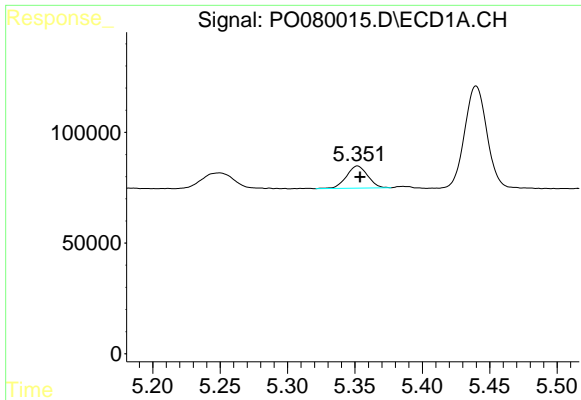
#8 AR-1221-1

R.T.: 5.249 min
 Delta R.T.: -0.005 min
 Response: 121460
 Conc: 188.49 ng/ml



#8 AR-1221-1

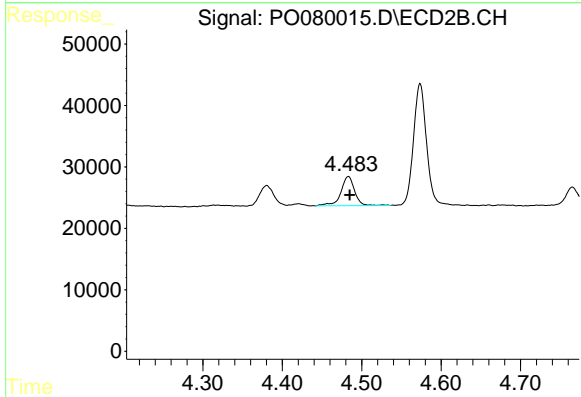
R.T.: 4.380 min
 Delta R.T.: -0.003 min
 Response: 39000
 Conc: 135.06 ng/ml



#9 AR-1221-2

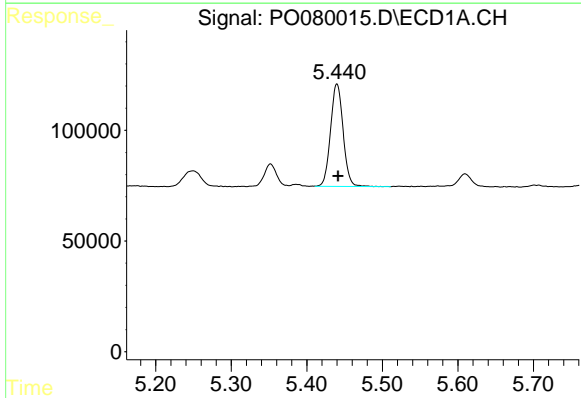
R.T.: 5.352 min
 Delta R.T.: -0.002 min
 Response: 109971
 Conc: 239.50 ng/ml

Instrument :
 ECD_O
ClientSampled :
 PB138077BS



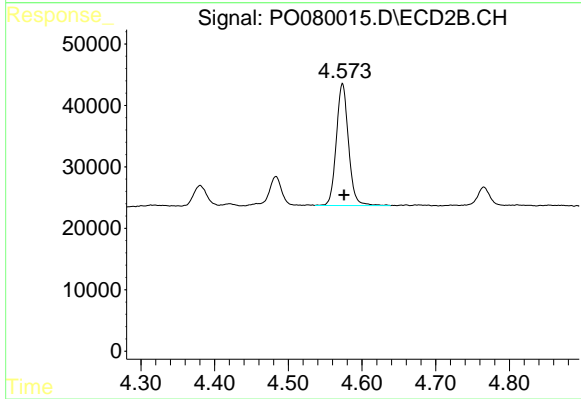
#9 AR-1221-2

R.T.: 4.483 min
 Delta R.T.: -0.002 min
 Response: 57334
 Conc: 267.32 ng/ml



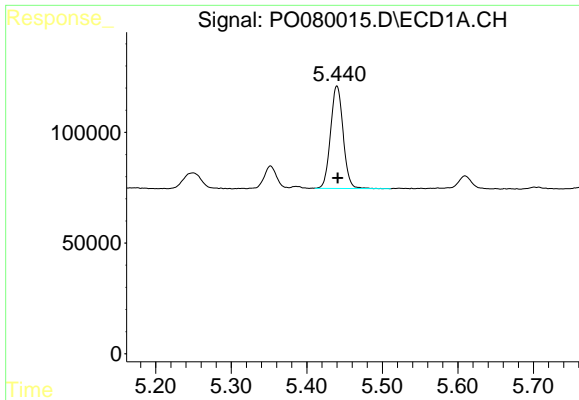
#10 AR-1221-3

R.T.: 5.440 min
 Delta R.T.: -0.002 min
 Response: 536099
 Conc: 347.43 ng/ml



#10 AR-1221-3

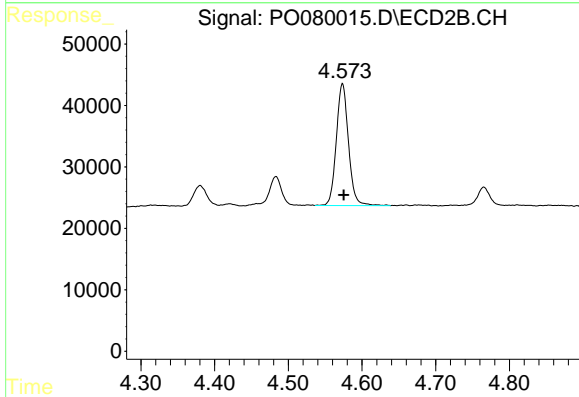
R.T.: 4.574 min
 Delta R.T.: -0.002 min
 Response: 227105
 Conc: 349.82 ng/ml



#11 AR-1232-1

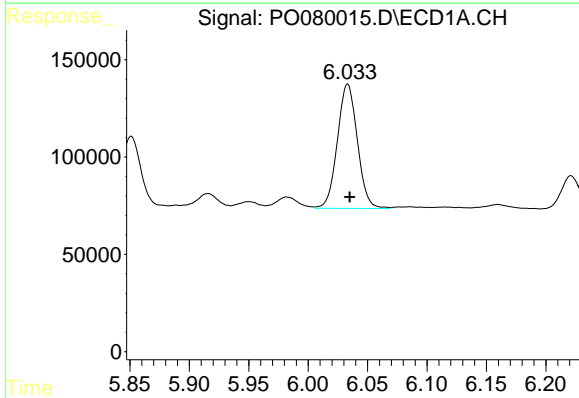
R.T.: 5.440 min
 Delta R.T.: 0.000 min
 Response: 536099
 Conc: 376.19 ng/ml

Instrument :
 ECD_O
 ClientSampled :
 PB138077BS



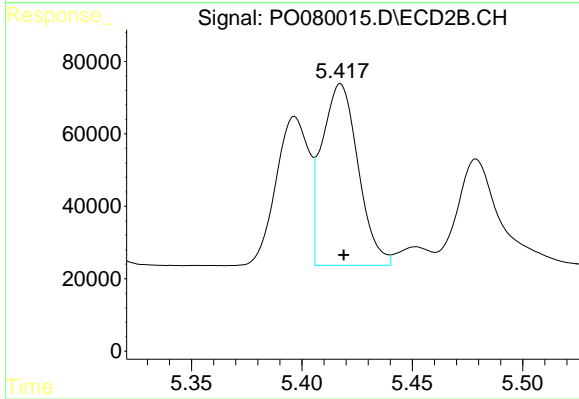
#11 AR-1232-1

R.T.: 4.574 min
 Delta R.T.: -0.002 min
 Response: 227105
 Conc: 376.62 ng/ml



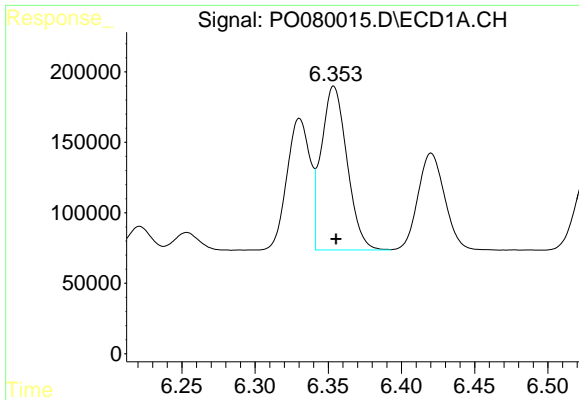
#12 AR-1232-2

R.T.: 6.033 min
 Delta R.T.: -0.002 min
 Response: 747504
 Conc: 1070.09 ng/ml



#12 AR-1232-2

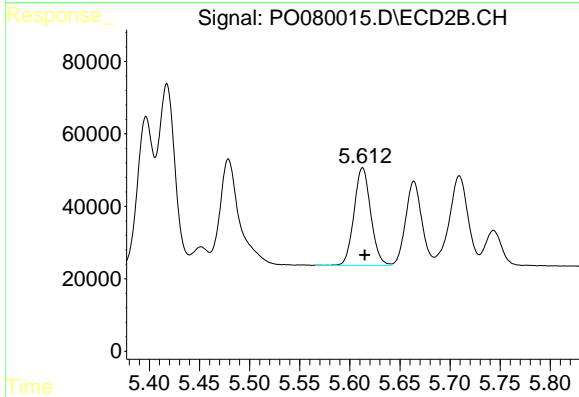
R.T.: 5.417 min
 Delta R.T.: -0.001 min
 Response: 572104
 Conc: 1017.36 ng/ml



#13 AR-1232-3

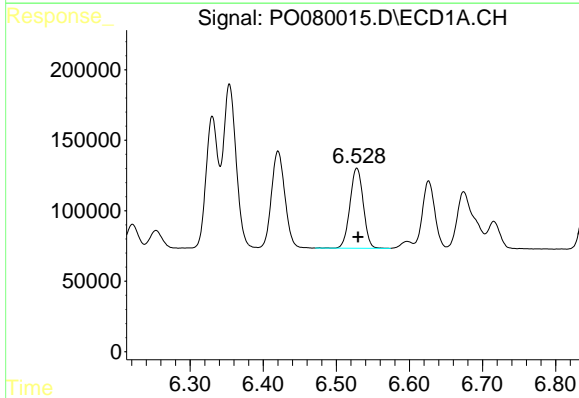
R.T.: 6.354 min
 Delta R.T.: -0.002 min
 Response: 142224
 Conc: 1067.11 ng/ml

Instrument :
 ECD_O
 ClientSampled :
 PB138077BS



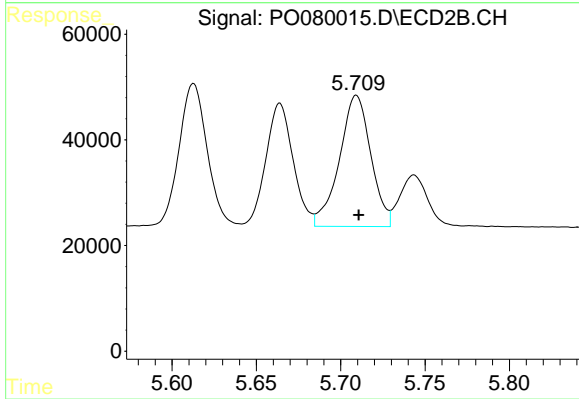
#13 AR-1232-3

R.T.: 5.613 min
 Delta R.T.: -0.002 min
 Response: 312650
 Conc: 1038.49 ng/ml



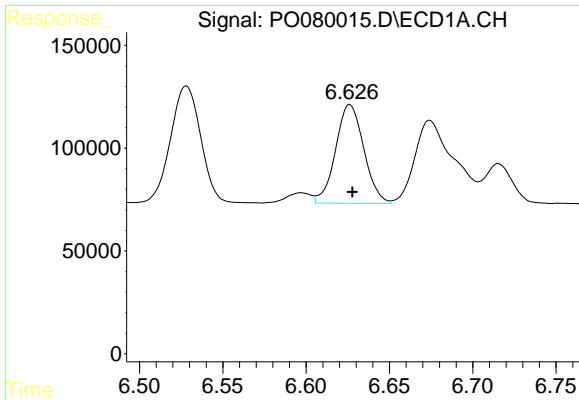
#14 AR-1232-4

R.T.: 6.528 min
 Delta R.T.: -0.002 min
 Response: 715615
 Conc: 1098.83 ng/ml



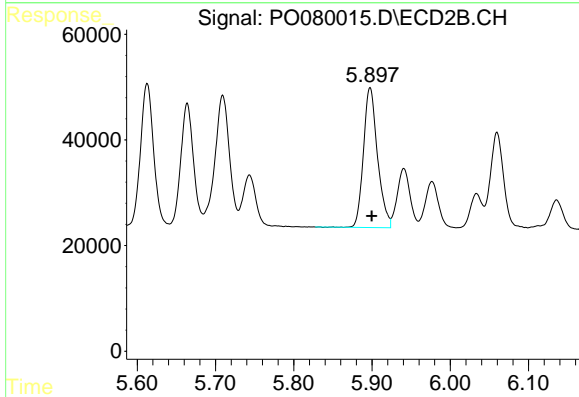
#14 AR-1232-4

R.T.: 5.709 min
 Delta R.T.: -0.001 min
 Response: 322102
 Conc: 1131.49 ng/ml

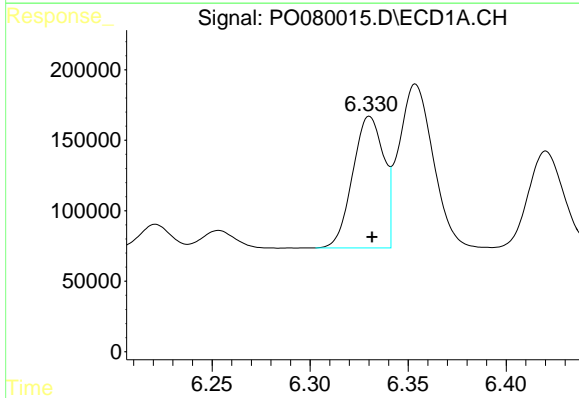


#15 AR-1232-5
 R.T.: 6.626 min
 Delta R.T.: -0.002 min
 Response: 565845
 Conc: 1267.13 ng/ml

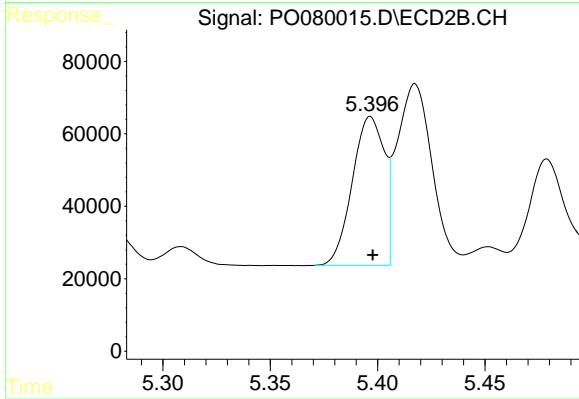
Instrument :
 ECD_O
ClientSampleId :
 PB138077BS



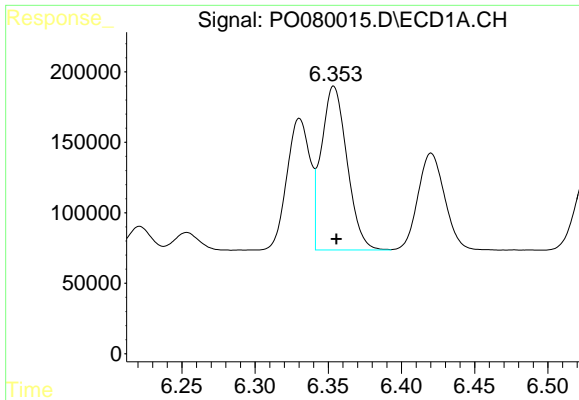
#15 AR-1232-5
 R.T.: 5.898 min
 Delta R.T.: -0.002 min
 Response: 329634
 Conc: 1097.64 ng/ml



#16 AR-1242-1
 R.T.: 6.330 min
 Delta R.T.: -0.001 min
 Response: 1027174
 Conc: 616.30 ng/ml



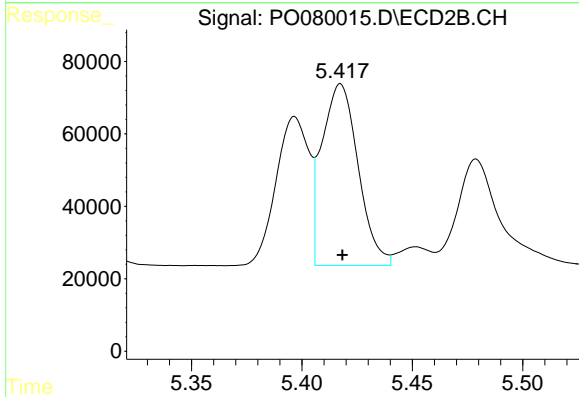
#16 AR-1242-1
 R.T.: 5.397 min
 Delta R.T.: -0.001 min
 Response: 426168
 Conc: 598.40 ng/ml



#17 AR-1242-2

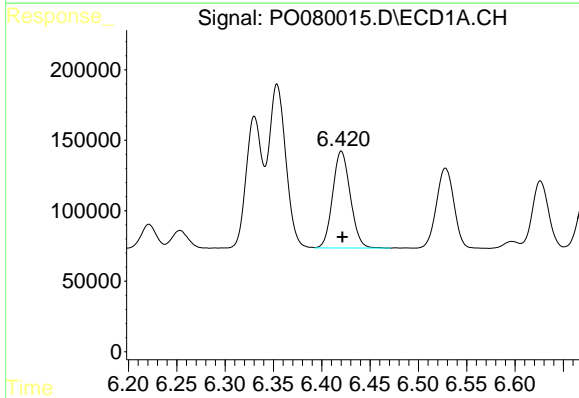
R.T.: 6.354 min
 Delta R.T.: -0.002 min
 Response: 1422224
 Conc: 618.41 ng/ml

Instrument :
 ECD_O
 ClientSampleId :
 PB138077BS



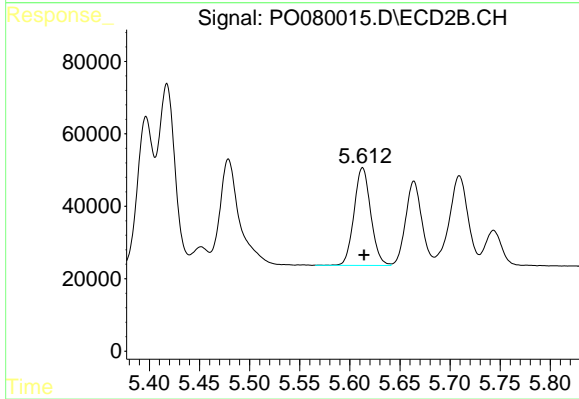
#17 AR-1242-2

R.T.: 5.417 min
 Delta R.T.: 0.000 min
 Response: 572104
 Conc: 590.80 ng/ml



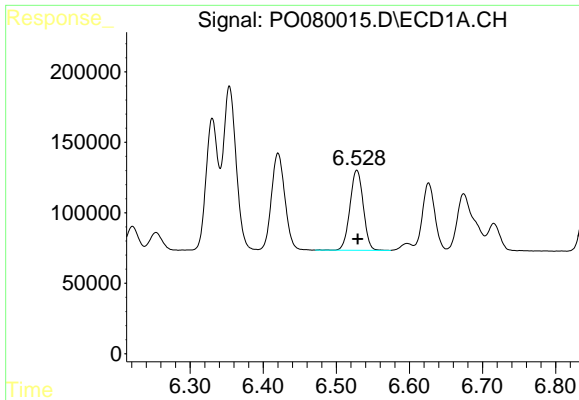
#18 AR-1242-3

R.T.: 6.420 min
 Delta R.T.: 0.000 min
 Response: 872159
 Conc: 614.37 ng/ml



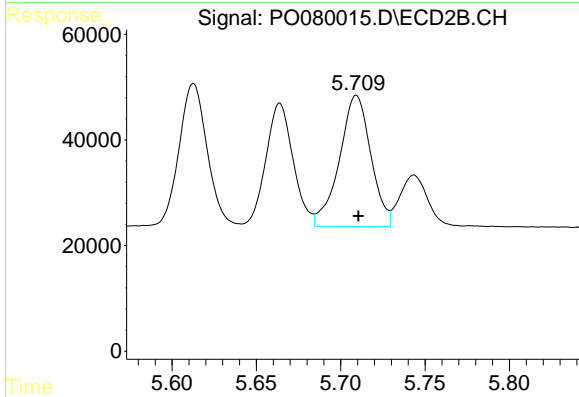
#18 AR-1242-3

R.T.: 5.613 min
 Delta R.T.: -0.002 min
 Response: 312650
 Conc: 582.69 ng/ml

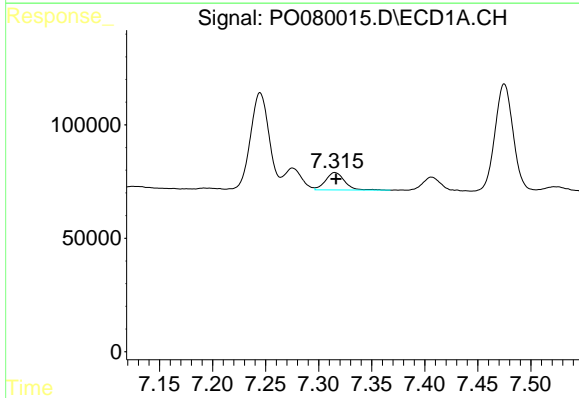


#19 AR-1242-4
 R.T.: 6.528 min
 Delta R.T.: -0.001 min
 Response: 715615
 Conc: 630.63 ng/ml

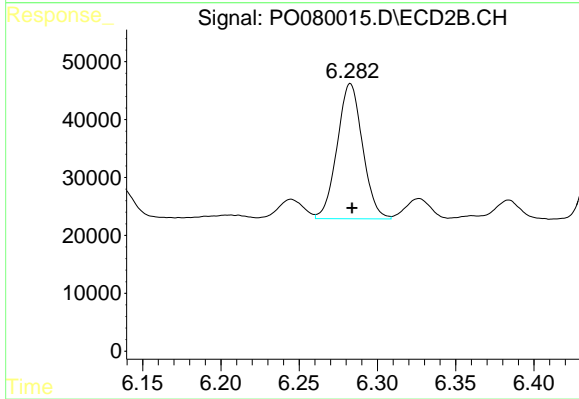
Instrument :
 ECD_O
ClientSampleId :
 PB138077BS



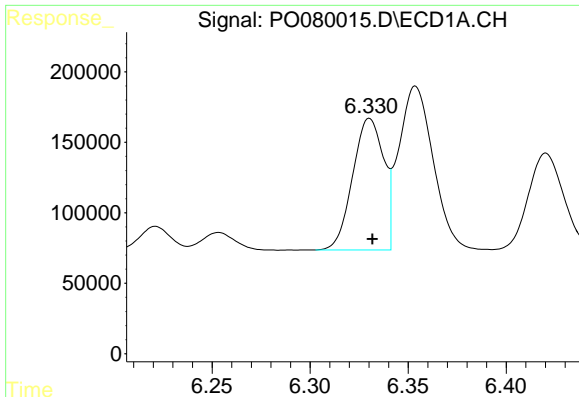
#19 AR-1242-4
 R.T.: 5.709 min
 Delta R.T.: -0.001 min
 Response: 322102
 Conc: 573.63 ng/ml



#20 AR-1242-5
 R.T.: 7.315 min
 Delta R.T.: 0.000 min
 Response: 95203
 Conc: 74.99 ng/ml



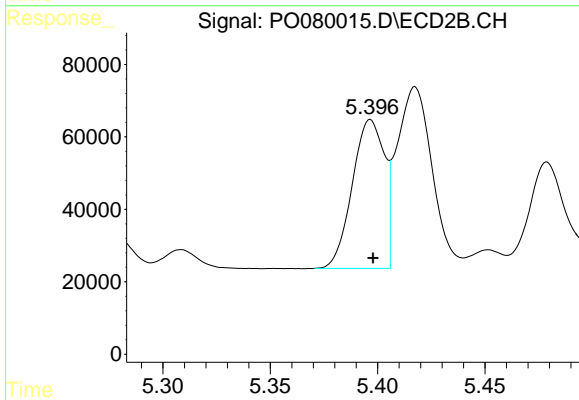
#20 AR-1242-5
 R.T.: 6.283 min
 Delta R.T.: 0.000 min
 Response: 263730
 Conc: 405.31 ng/ml



#21 AR-1248-1

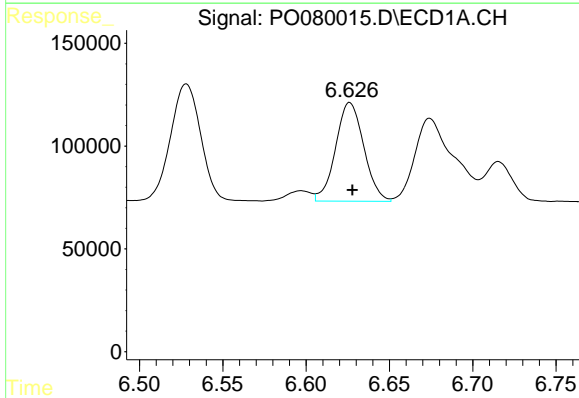
R.T.: 6.330 min
 Delta R.T.: -0.001 min
 Response: 1027174
 Conc: 810.28 ng/ml

Instrument :
 ECD_O
 ClientSampled :
 PB138077BS



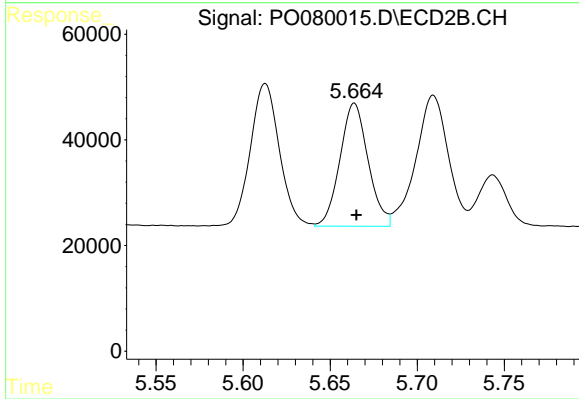
#21 AR-1248-1

R.T.: 5.397 min
 Delta R.T.: -0.001 min
 Response: 426168
 Conc: 771.77 ng/ml



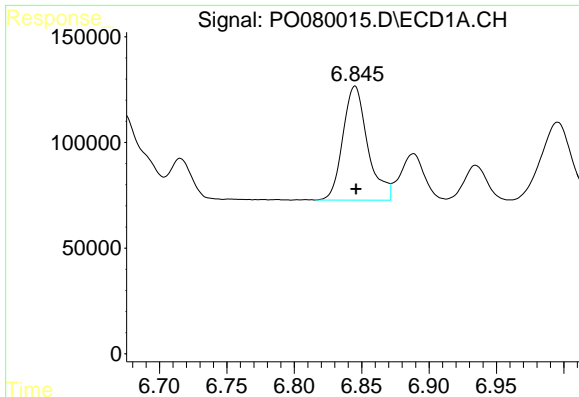
#22 AR-1248-2

R.T.: 6.626 min
 Delta R.T.: -0.002 min
 Response: 565845
 Conc: 324.57 ng/ml



#22 AR-1248-2

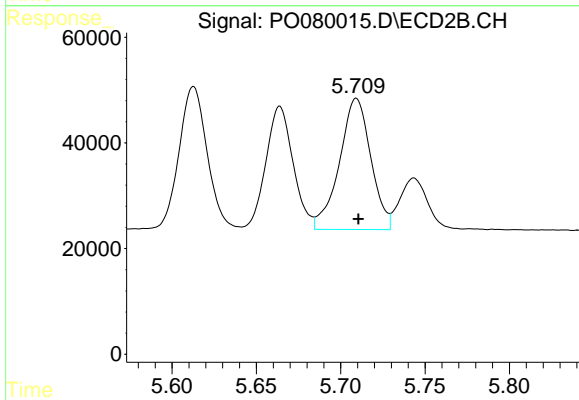
R.T.: 5.664 min
 Delta R.T.: -0.001 min
 Response: 262531
 Conc: 318.65 ng/ml



#23 AR-1248-3

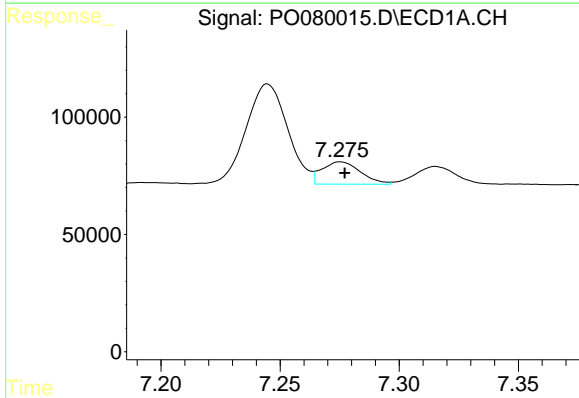
R.T.: 6.845 min
 Delta R.T.: 0.000 min
 Response: 693895
 Conc: 338.57 ng/ml

Instrument :
 ECD_O
 ClientSampleId :
 PB138077BS



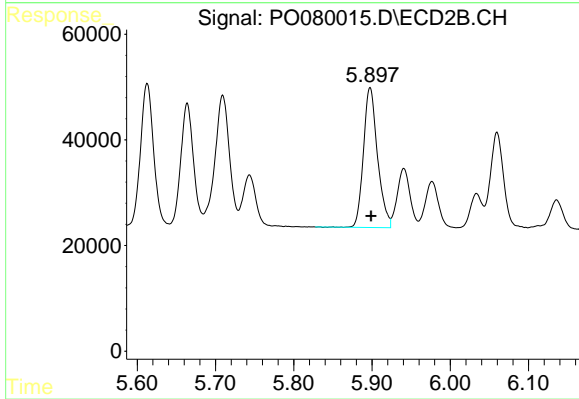
#23 AR-1248-3

R.T.: 5.709 min
 Delta R.T.: -0.001 min
 Response: 322102
 Conc: 388.12 ng/ml



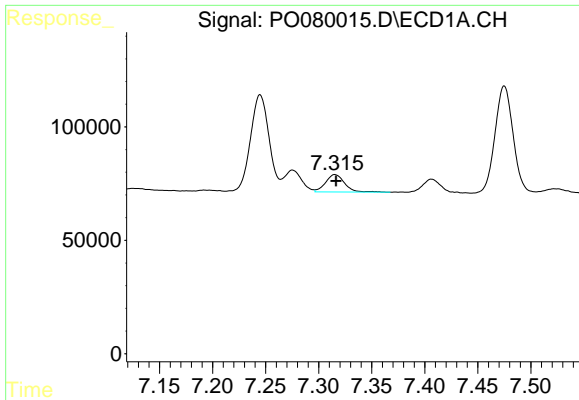
#24 AR-1248-4

R.T.: 7.275 min
 Delta R.T.: -0.002 min
 Response: 107499
 Conc: 45.92 ng/ml



#24 AR-1248-4

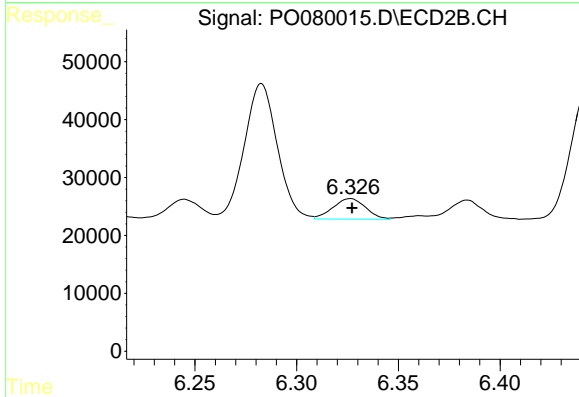
R.T.: 5.898 min
 Delta R.T.: -0.001 min
 Response: 329634
 Conc: 348.85 ng/ml



#25 AR-1248-5

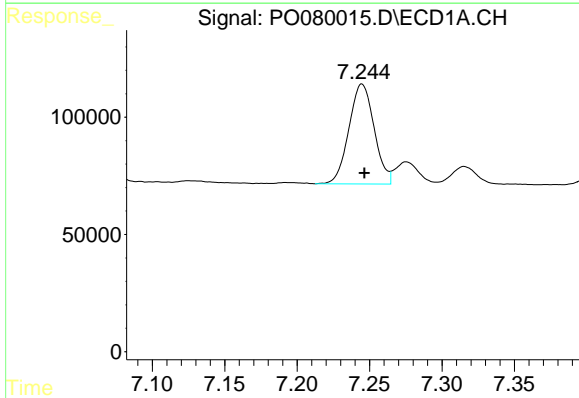
R.T.: 7.315 min
 Delta R.T.: -0.001 min
 Response: 95203
 Conc: 41.87 ng/ml

Instrument :
 ECD_O
ClientSampleId :
 PB138077BS



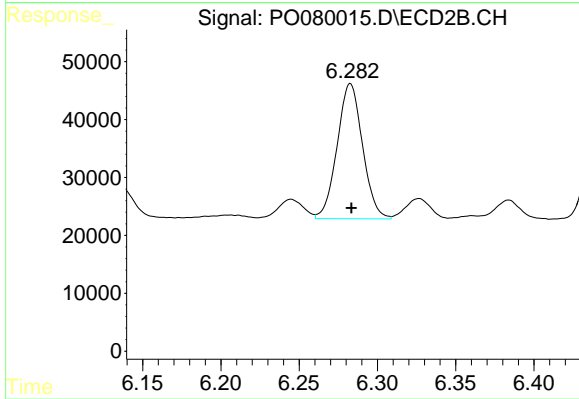
#25 AR-1248-5

R.T.: 6.326 min
 Delta R.T.: 0.000 min
 Response: 39708
 Conc: 43.31 ng/ml



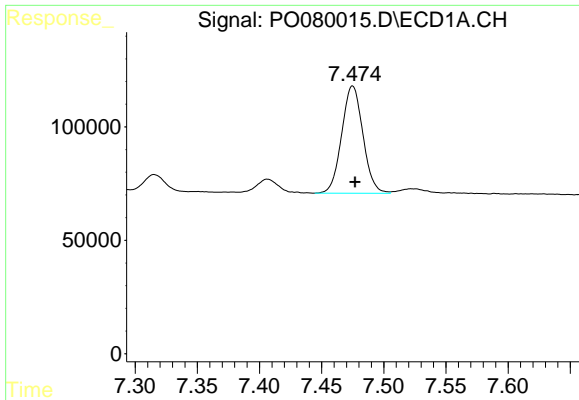
#26 AR-1254-1

R.T.: 7.245 min
 Delta R.T.: -0.002 min
 Response: 517570
 Conc: 236.94 ng/ml



#26 AR-1254-1

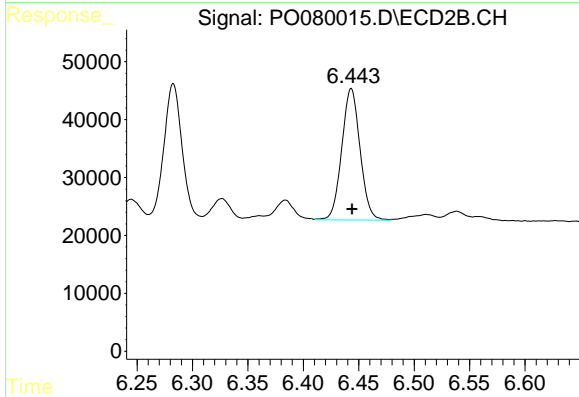
R.T.: 6.283 min
 Delta R.T.: 0.000 min
 Response: 263730
 Conc: 194.48 ng/ml



#27 AR-1254-2

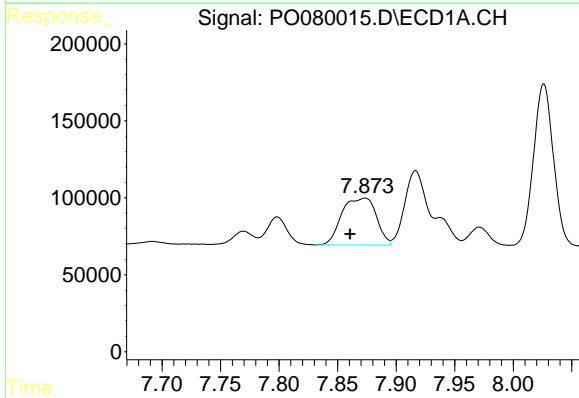
R.T.: 7.475 min
 Delta R.T.: -0.002 min
 Response: 562635
 Conc: 171.34 ng/ml

Instrument :
 ECD_O
 ClientSampleId :
 PB138077BS



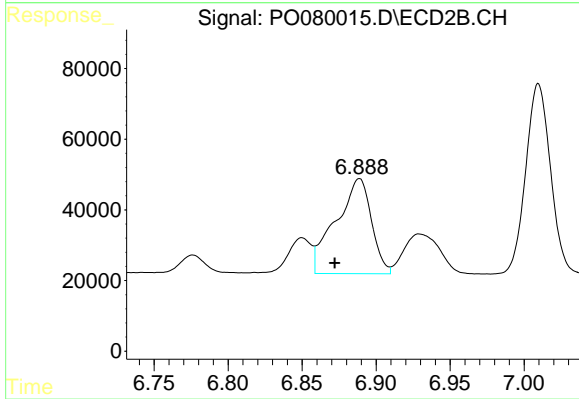
#27 AR-1254-2

R.T.: 6.443 min
 Delta R.T.: 0.000 min
 Response: 261470
 Conc: 218.06 ng/ml



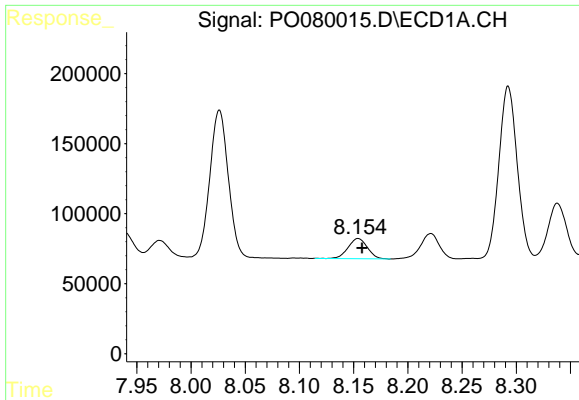
#28 AR-1254-3

R.T.: 7.873 min
 Delta R.T.: 0.013 min
 Response: 626043
 Conc: 181.82 ng/ml



#28 AR-1254-3

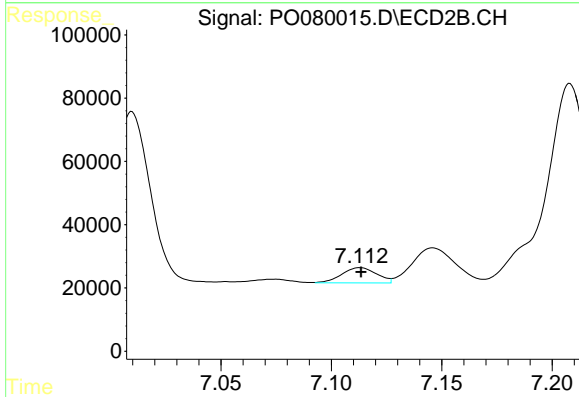
R.T.: 6.889 min
 Delta R.T.: 0.017 min
 Response: 450609
 Conc: 240.83 ng/ml



#29 AR-1254-4

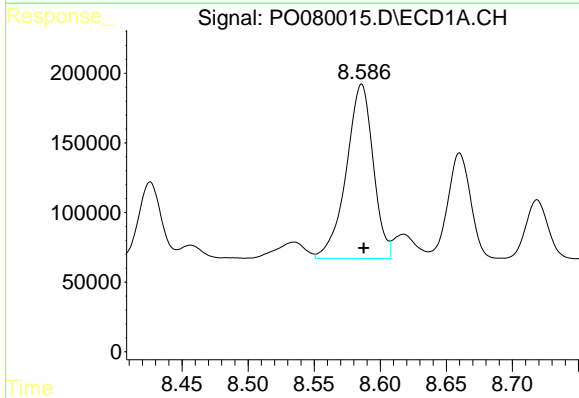
R.T.: 8.154 min
 Delta R.T.: -0.004 min
 Response: 178408
 Conc: 70.15 ng/ml

Instrument :
 ECD_O
ClientSampled :
 PB138077BS



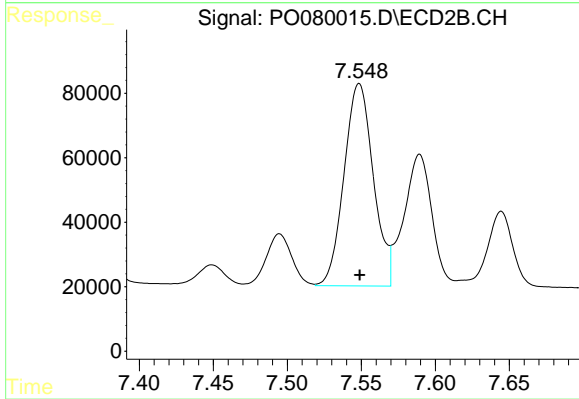
#29 AR-1254-4

R.T.: 7.113 min
 Delta R.T.: 0.000 min
 Response: 53000
 Conc: 44.77 ng/ml



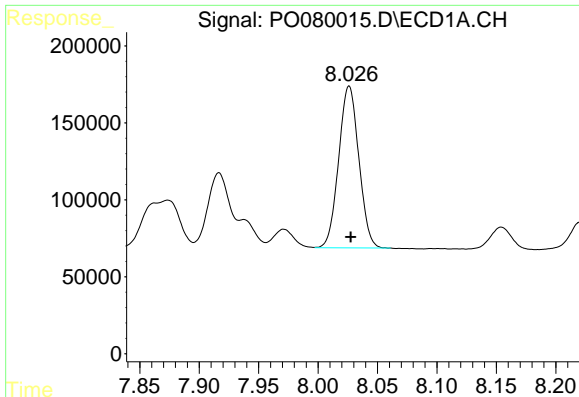
#30 AR-1254-5

R.T.: 8.586 min
 Delta R.T.: -0.002 min
 Response: 1776336
 Conc: 667.93 ng/ml



#30 AR-1254-5

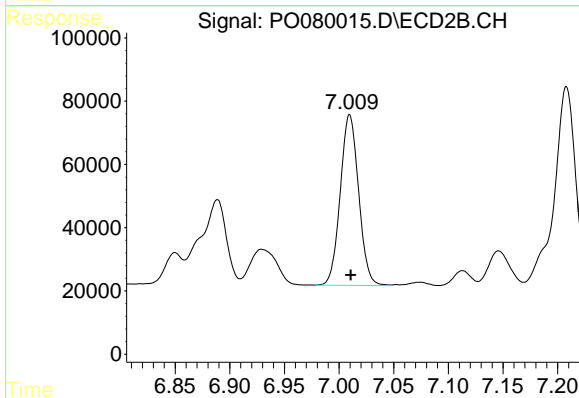
R.T.: 7.549 min
 Delta R.T.: 0.000 min
 Response: 865567
 Conc: 540.34 ng/ml



#31 AR-1260-1

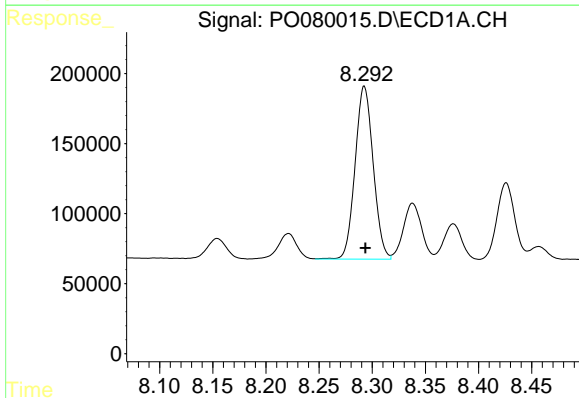
R.T.: 8.026 min
 Delta R.T.: -0.001 min
 Response: 1241494
 Conc: 506.02 ng/ml

Instrument :
 ECD_O
 ClientSampled :
 PB138077BS



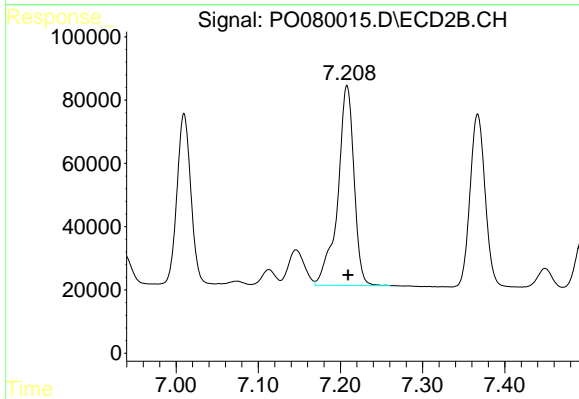
#31 AR-1260-1

R.T.: 7.010 min
 Delta R.T.: -0.001 min
 Response: 631720
 Conc: 488.05 ng/ml



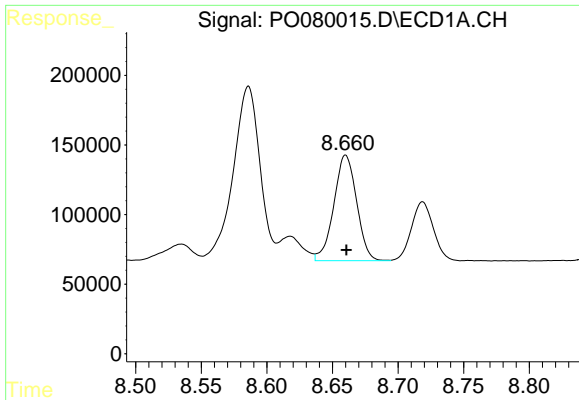
#32 AR-1260-2

R.T.: 8.293 min
 Delta R.T.: 0.000 min
 Response: 1464669
 Conc: 476.60 ng/ml



#32 AR-1260-2

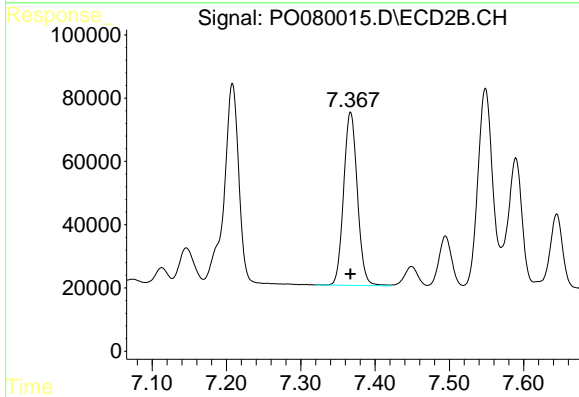
R.T.: 7.208 min
 Delta R.T.: -0.001 min
 Response: 868898
 Conc: 568.00 ng/ml



#33 AR-1260-3

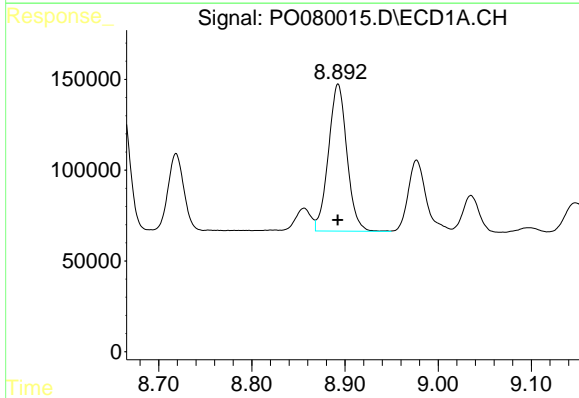
R.T.: 8.660 min
 Delta R.T.: 0.000 min
 Response: 918170
 Conc: 414.09 ng/ml

Instrument :
 ECD_O
ClientSampled :
 PB138077BS



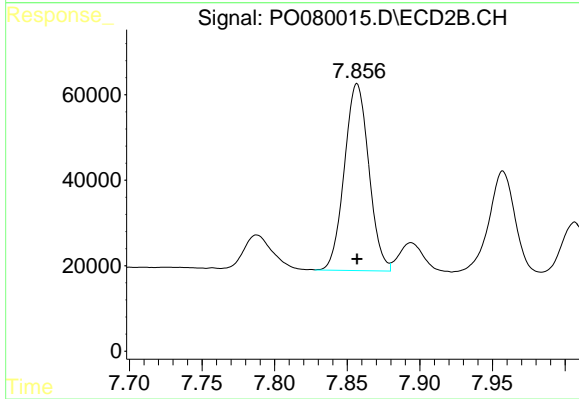
#33 AR-1260-3

R.T.: 7.367 min
 Delta R.T.: 0.000 min
 Response: 701448
 Conc: 480.42 ng/ml



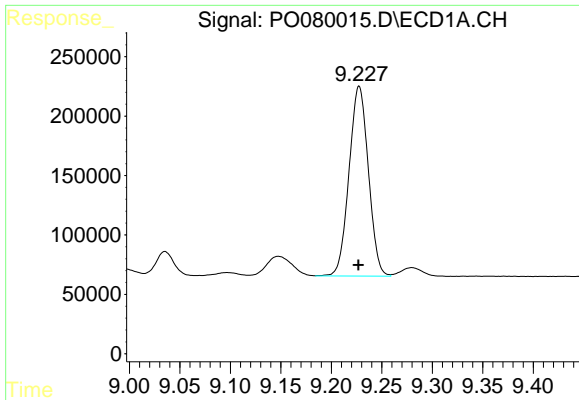
#34 AR-1260-4

R.T.: 8.893 min
 Delta R.T.: 0.000 min
 Response: 1118388
 Conc: 435.67 ng/ml



#34 AR-1260-4

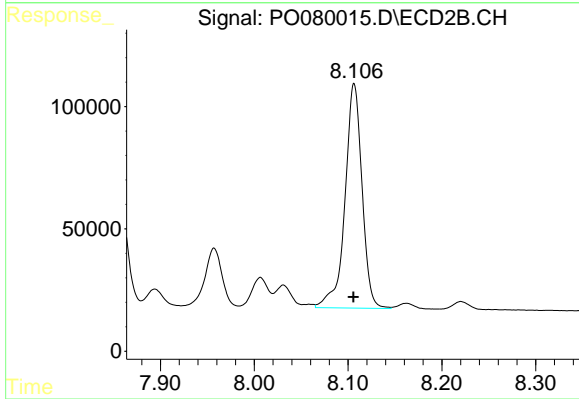
R.T.: 7.857 min
 Delta R.T.: 0.000 min
 Response: 511837
 Conc: 431.94 ng/ml



#35 AR-1260-5

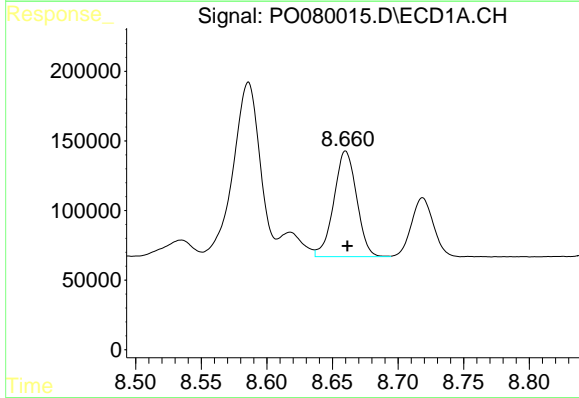
R.T.: 9.228 min
 Delta R.T.: 0.000 min
 Response: 2128717
 Conc: 416.34 ng/ml

Instrument :
 ECD_O
 ClientSampleId :
 PB138077BS



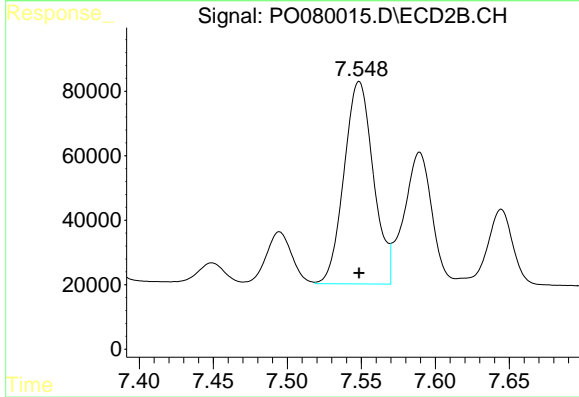
#35 AR-1260-5

R.T.: 8.106 min
 Delta R.T.: 0.000 min
 Response: 1159736
 Conc: 439.02 ng/ml



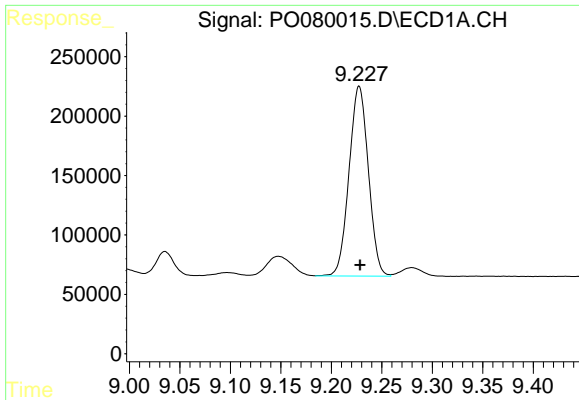
#36 AR-1262-1

R.T.: 8.660 min
 Delta R.T.: -0.001 min
 Response: 918170
 Conc: 287.13 ng/ml



#36 AR-1262-1

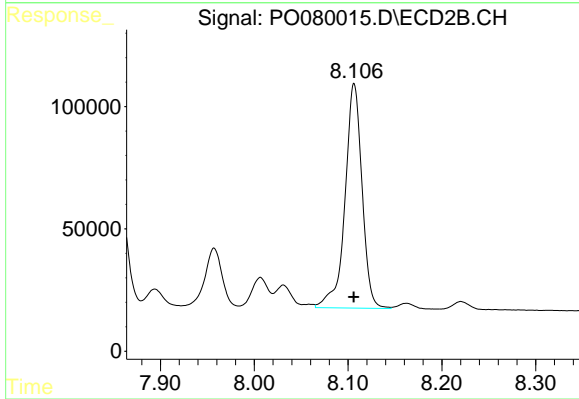
R.T.: 7.549 min
 Delta R.T.: 0.000 min
 Response: 865567
 Conc: 1028.29 ng/ml



#37 AR-1262-2

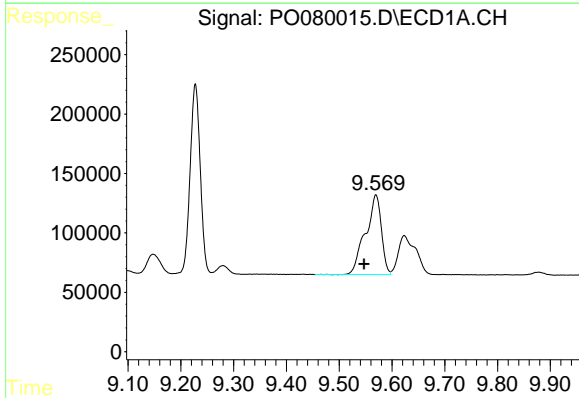
R.T.: 9.228 min
 Delta R.T.: 0.000 min
 Response: 2128717
 Conc: 393.05 ng/ml

Instrument :
 ECD_O
 ClientSampled :
 PB138077BS



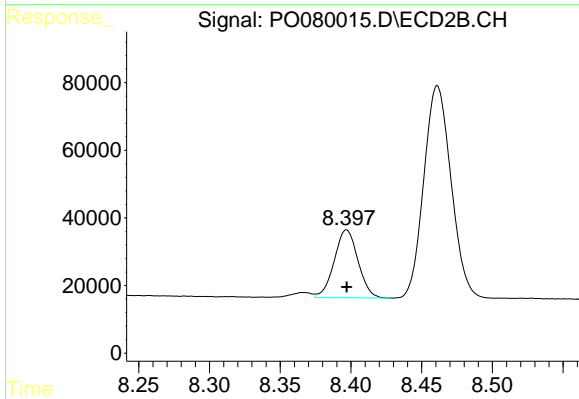
#37 AR-1262-2

R.T.: 8.106 min
 Delta R.T.: 0.000 min
 Response: 1159736
 Conc: 431.92 ng/ml



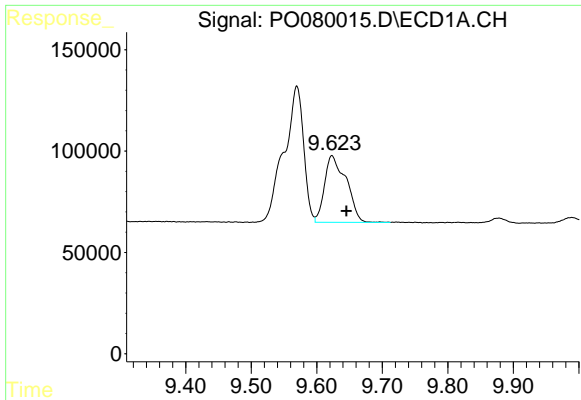
#38 AR-1262-3

R.T.: 9.570 min
 Delta R.T.: 0.022 min
 Response: 1396330
 Conc: 369.19 ng/ml



#38 AR-1262-3

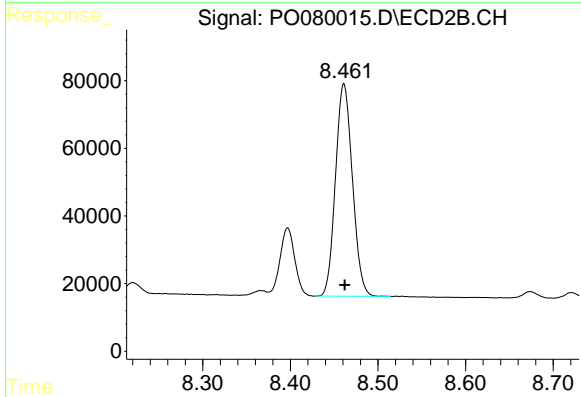
R.T.: 8.397 min
 Delta R.T.: 0.000 min
 Response: 235603
 Conc: 212.12 ng/ml



#39 AR-1262-4

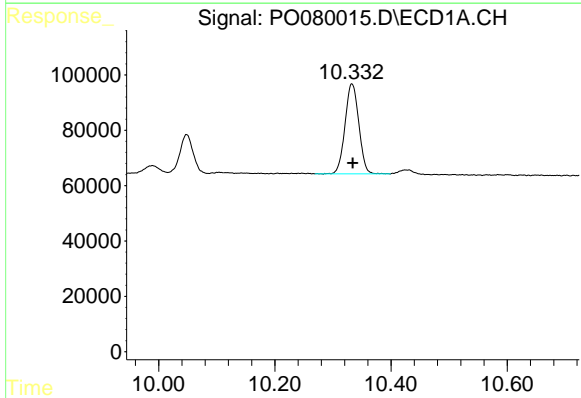
R.T.: 9.623 min
 Delta R.T.: -0.022 min
 Response: 755770
 Conc: 267.47 ng/ml

Instrument :
 ECD_O
 ClientSampled :
 PB138077BS



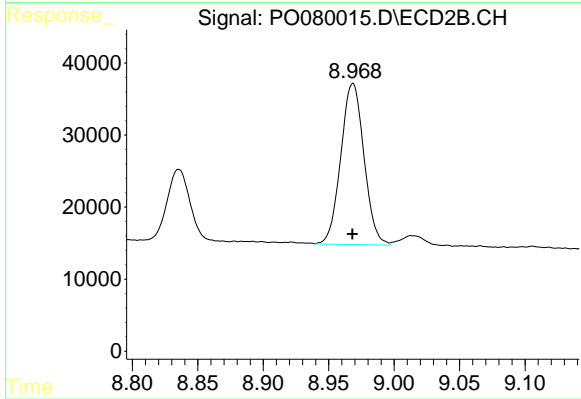
#39 AR-1262-4

R.T.: 8.461 min
 Delta R.T.: 0.000 min
 Response: 843479
 Conc: 421.87 ng/ml



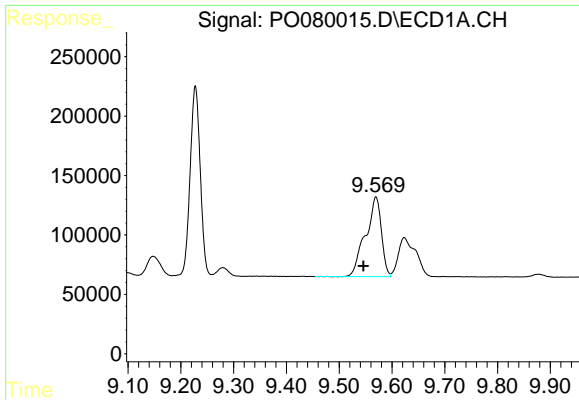
#40 AR-1262-5

R.T.: 10.333 min
 Delta R.T.: -0.001 min
 Response: 536439
 Conc: 282.11 ng/ml



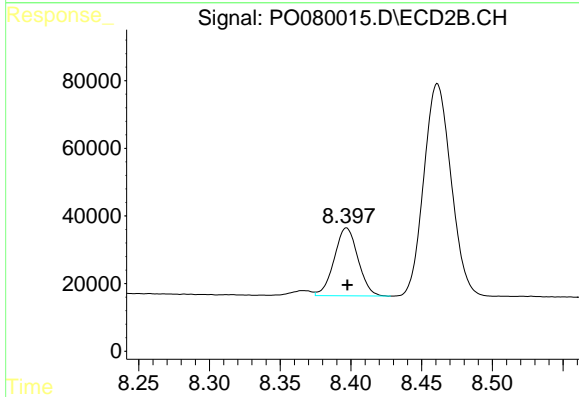
#40 AR-1262-5

R.T.: 8.969 min
 Delta R.T.: 0.000 min
 Response: 275686
 Conc: 282.62 ng/ml

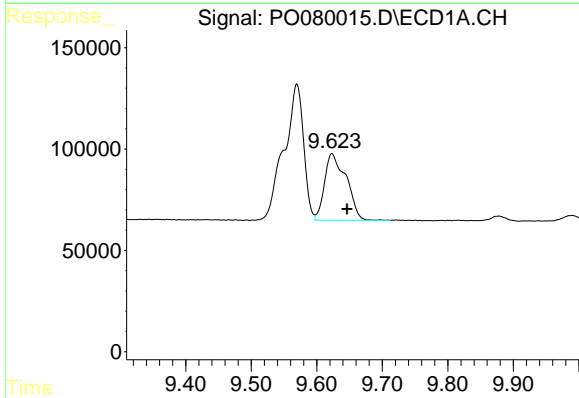


#41 AR-1268-1
 R.T.: 9.570 min
 Delta R.T.: 0.024 min
 Response: 1396330
 Conc: 215.68 ng/ml

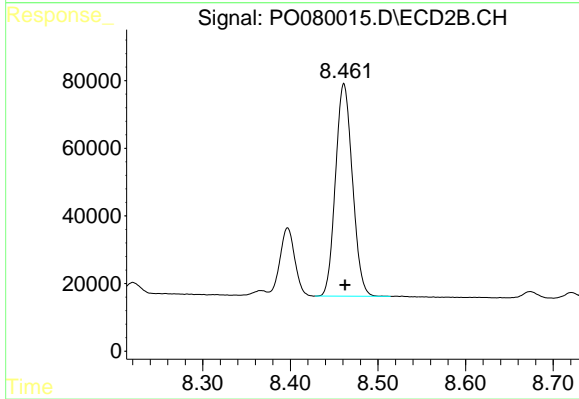
Instrument :
 ECD_O
 ClientSampled :
 PB138077BS



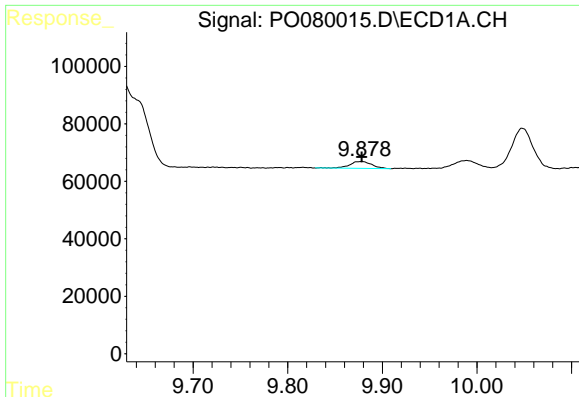
#41 AR-1268-1
 R.T.: 8.397 min
 Delta R.T.: 0.000 min
 Response: 235603
 Conc: 77.54 ng/ml



#42 AR-1268-2
 R.T.: 9.623 min
 Delta R.T.: -0.023 min
 Response: 755770
 Conc: 127.01 ng/ml



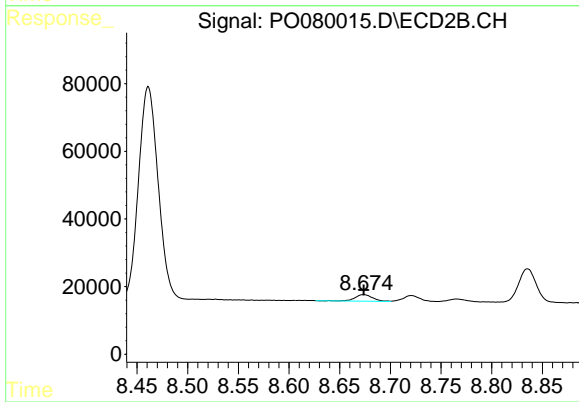
#42 AR-1268-2
 R.T.: 8.461 min
 Delta R.T.: -0.001 min
 Response: 843479
 Conc: 310.00 ng/ml



#43 AR-1268-3

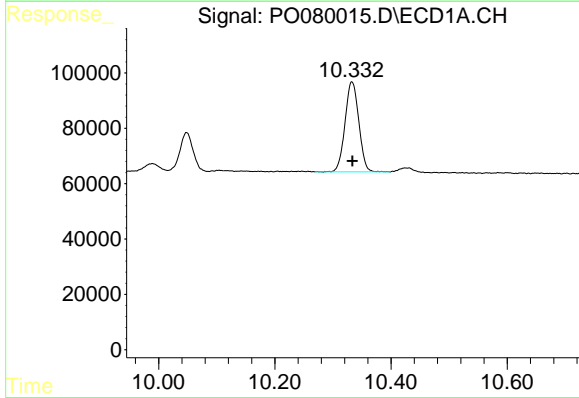
R.T.: 9.878 min
 Delta R.T.: 0.000 min
 Response: 38767
 Conc: 7.72 ng/ml

Instrument :
 ECD_O
 ClientSampleId :
 PB138077BS



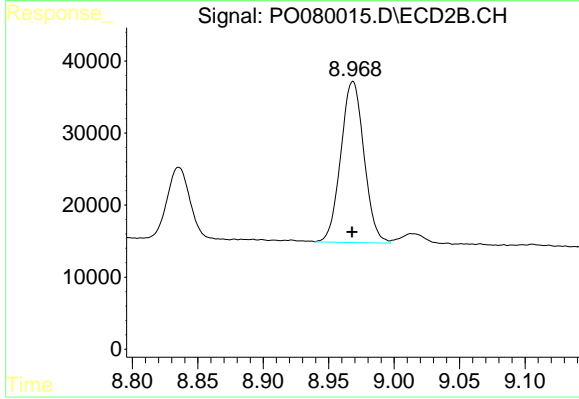
#43 AR-1268-3

R.T.: 8.674 min
 Delta R.T.: 0.000 min
 Response: 23135
 Conc: 9.98 ng/ml



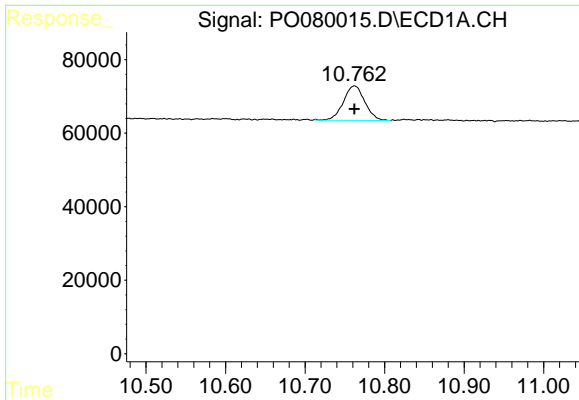
#44 AR-1268-4

R.T.: 10.333 min
 Delta R.T.: 0.000 min
 Response: 536439
 Conc: 233.47 ng/ml



#44 AR-1268-4

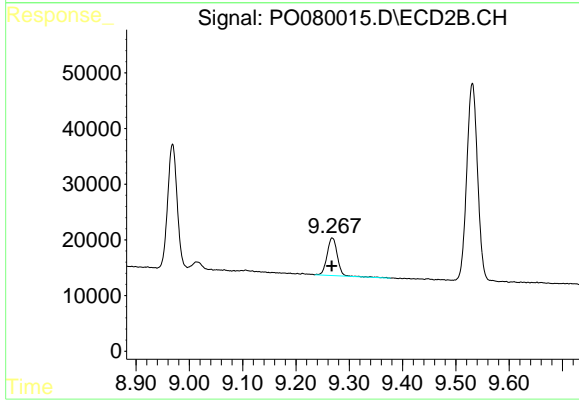
R.T.: 8.969 min
 Delta R.T.: 0.000 min
 Response: 275686
 Conc: 257.50 ng/ml



#45 AR-1268-5

R.T.: 10.762 min
Delta R.T.: 0.000 min
Response: 175046
Conc: 10.50 ng/ml

Instrument :
ECD_O
ClientSampled :
PB138077BS



#45 AR-1268-5

R.T.: 9.268 min
Delta R.T.: 0.000 min
Response: 89946
Conc: 12.95 ng/ml