

Data Path : Z:\pestpcbsrv\HPCHEM1\ECD\_0\Data\P0073119\  
 Data File : P0058607.D  
 Signal(s) : Signal #1: ECD1A.CH Signal #2: ECD2B.CH  
 Acq On : 30 Jul 2019 13:53  
 Operator : SM/AJ  
 Sample : PB121666BL  
 Misc :  
 ALS Vial : 4 Sample Multiplier: 1

Instrument :  
 ECD\_0  
 ClientSampleId :  
 PB121666BL

Integration File signal 1: autoint1.e  
 Integration File signal 2: autoint2.e  
 Quant Time: Jul 30 14:46:47 2019  
 Quant Method : Z:\pestpcbsrv\HPCHEM1\ECD\_0\methods\P0072819.M  
 Quant Title : GC EXTRACTABLES  
 QLast Update : Sat Jul 27 06:49:05 2019  
 Response via : Initial Calibration  
 Integrator: ChemStation 6890 Scale Mode: Small noise peaks clipped

Volume Inj. : 2 µl  
 Signal #1 Phase : ZB-MR1 Signal #2 Phase: ZB-MR2  
 Signal #1 Info : 30Mx0.32mmx 0.50µ Signal #2 Info : 30M x 0.32mm x 0.25µm

Compound	RT#1	RT#2	Resp#1	Resp#2	ng/ml	ng/ml
----------	------	------	--------	--------	-------	-------

System Monitoring Compounds

1) SA Tetrachlo...	4.174	3.523	1009184	822871	23.913	20.597
2) SA Decachlor...	9.660	8.412	1100207	853001	20.316	21.610

Target Compounds

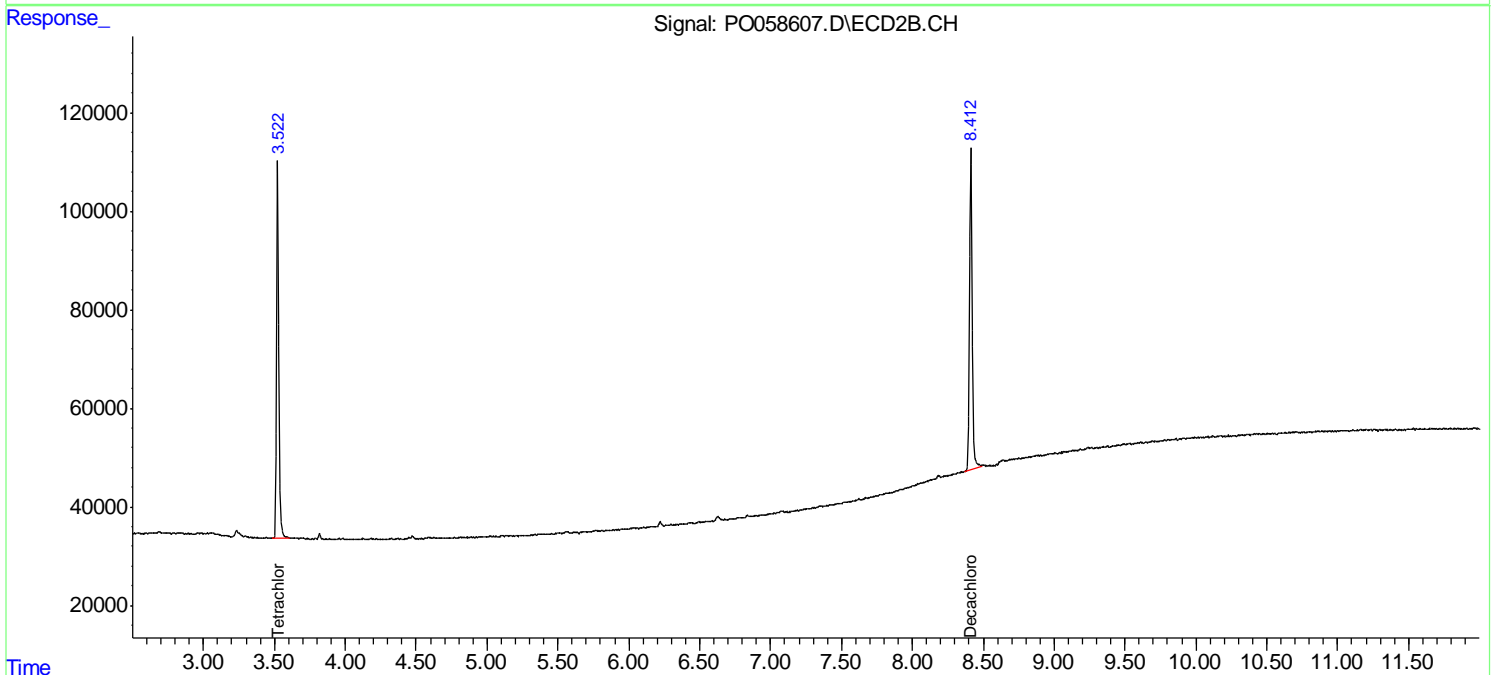
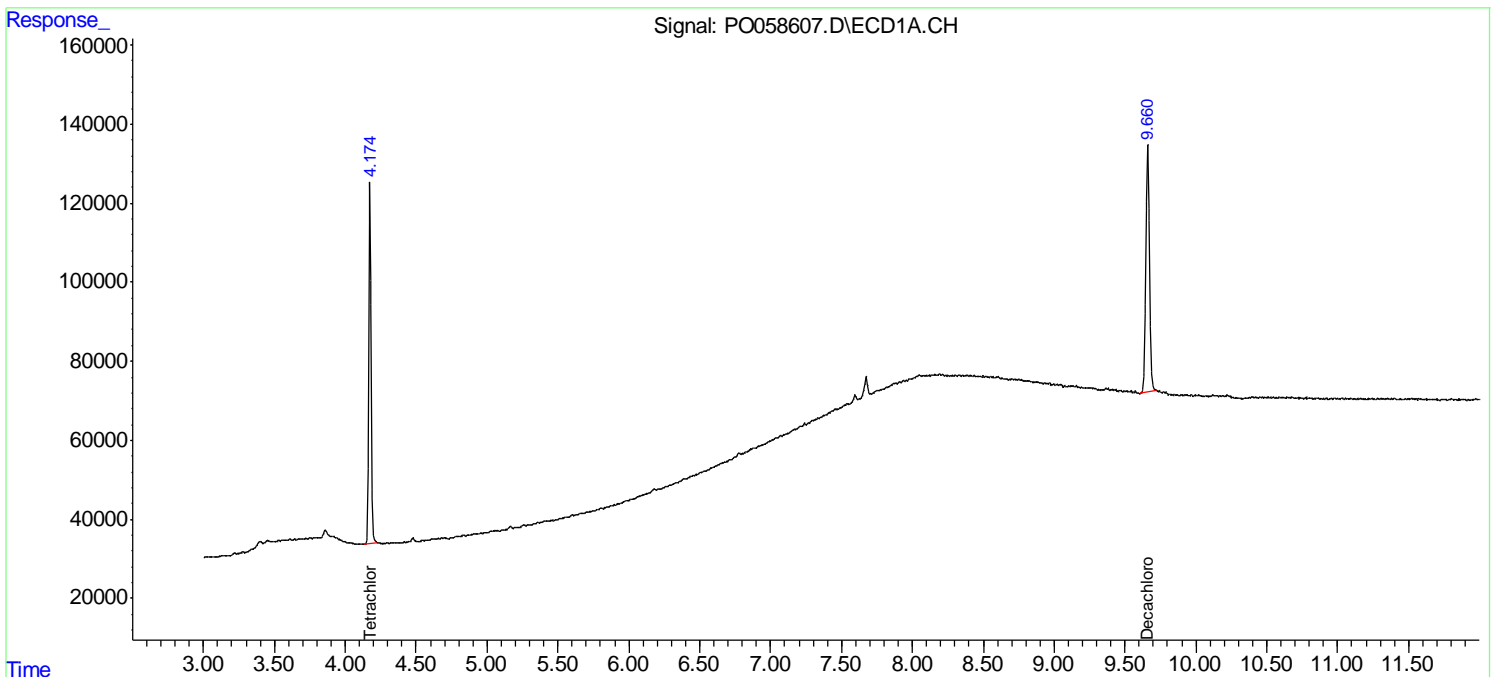
(f)=RT Delta > 1/2 Window (#)=Amounts differ by > 25% (m)=manual int.

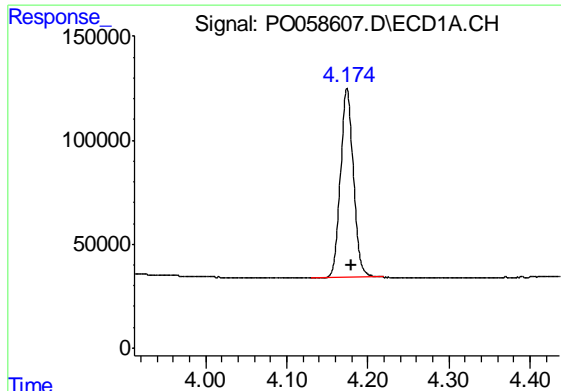
Data Path : Z:\pestpcbsrv\HPCHEM1\ECD\_O\Data\PO073119\  
 Data File : PO058607.D  
 Signal(s) : Signal #1: ECD1A.CH Signal #2: ECD2B.CH  
 Acq On : 30 Jul 2019 13:53  
 Operator : SM/AJ  
 Sample : PB121666BL  
 Misc :  
 ALS Vial : 4 Sample Multiplier: 1

Instrument :  
 ECD\_O  
 ClientSampleId :  
 PB121666BL

Integration File signal 1: autoint1.e  
 Integration File signal 2: autoint2.e  
 Quant Time: Jul 30 14:46:47 2019  
 Quant Method : Z:\pestpcbsrv\HPCHEM1\ECD\_O\methods\PO072819.M  
 Quant Title : GC EXTRACTABLES  
 QLast Update : Sat Jul 27 06:49:05 2019  
 Response via : Initial Calibration  
 Integrator: ChemStation 6890 Scale Mode: Small noise peaks clipped

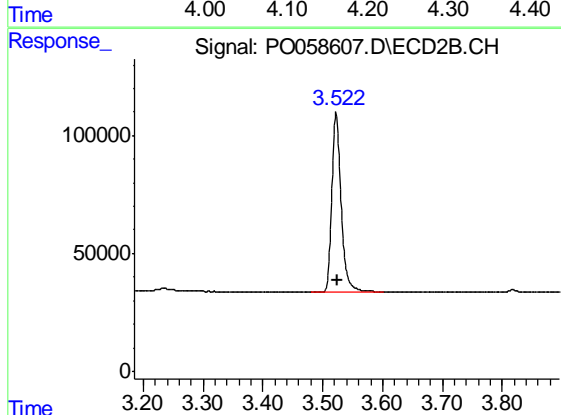
Volume Inj. : 2 µl  
 Signal #1 Phase : ZB-MR1 Signal #2 Phase: ZB-MR2  
 Signal #1 Info : 30Mx0.32mmx 0.50µ Signal #2 Info : 30M x 0.32mm x 0.25µm



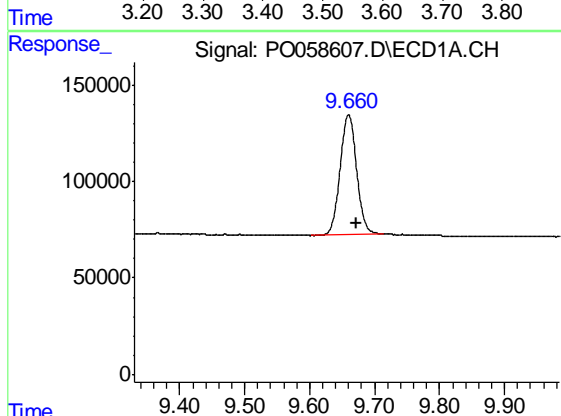


#1 Tetrachloro-m-xylene  
R.T.: 4.174 min  
Delta R.T.: -0.005 min  
Response: 1009184  
Conc: 23.91 ng/ml

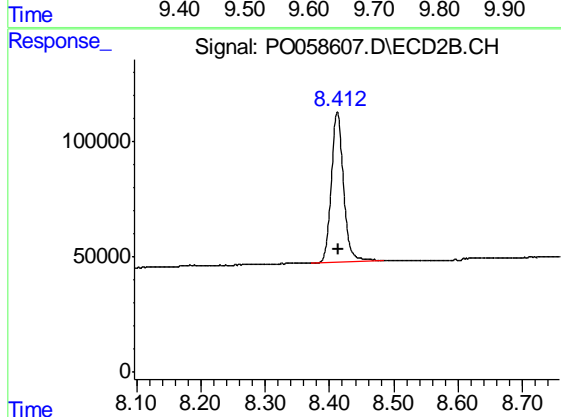
Instrument :  
ECD\_O  
ClientSampleId :  
PB121666BL



#1 Tetrachloro-m-xylene  
R.T.: 3.523 min  
Delta R.T.: -0.002 min  
Response: 822871  
Conc: 20.60 ng/ml



#2 Decachlorobiphenyl  
R.T.: 9.660 min  
Delta R.T.: -0.012 min  
Response: 1100207  
Conc: 20.32 ng/ml



#2 Decachlorobiphenyl  
R.T.: 8.412 min  
Delta R.T.: -0.002 min  
Response: 853001  
Conc: 21.61 ng/ml