

Data Path : Z:\pestpcbsrv\HPCHEM1\ECD\_0\Data\P0073125\  
 Data File : PO112629.D  
 Signal(s) : Signal #1: ECD1A.ch Signal #2: ECD2B.ch  
 Acq On : 31 Jul 2025 08:54  
 Operator : YP/AJ  
 Sample : AR1660CCC500  
 Misc :  
 ALS Vial : 3 Sample Multiplier: 1

Instrument :  
 ECD\_0  
 ClientSampleId :  
 AR1660CCC500

Integration File signal 1: autoint1.e  
 Integration File signal 2: autoint2.e  
 Quant Time: Jul 31 12:07:32 2025  
 Quant Method : Z:\pestpcbsrv\HPCHEM1\ECD\_0\methods\P0072325.M  
 Quant Title : GC EXTRACTABLES  
 QLast Update : Thu Jul 24 04:54:06 2025  
 Response via : Initial Calibration  
 Integrator: ChemStation

Volume Inj. : 2 µl  
 Signal #1 Phase : ZB-MR1 Signal #2 Phase: ZB-MR2  
 Signal #1 Info : 30Mx0.32mmx 0.50µ Signal #2 Info : 30M x 0.32mm x 0.25µm

Compound	RT#1	RT#2	Resp#1	Resp#2	ng/ml	ng/ml
-----						
System Monitoring Compounds						
1) SA Tetrachlo...	3.668	3.660	418.1E6	244.0E6	51.418	49.097
2) SA Decachlor...	8.691	8.637	396.6E6	90273794	54.235	51.085
Target Compounds						
3) L1 AR-1016-1	4.754	4.734	140.4E6	84399246	523.153	482.262
4) L1 AR-1016-2	4.772	4.752	213.3E6	125.6E6	525.249	482.181
5) L1 AR-1016-3	4.828	4.928	134.8E6	66115256	515.170	486.261
6) L1 AR-1016-4	4.948	4.970	110.0E6	54391940	519.307	489.643
7) L1 AR-1016-5	5.205	5.182	118.3E6	70580946	539.094	492.529
31) L7 AR-1260-1	6.242	6.210	232.9E6	125.5E6	530.163	504.810
32) L7 AR-1260-2	6.432	6.398	362.9E6	166.7E6	527.482	505.917
33) L7 AR-1260-3	6.798	6.550	333.6E6	134.1E6	567.387	522.023
34) L7 AR-1260-4	7.057	7.020	242.5E6	98902034	537.762	516.971
35) L7 AR-1260-5	7.300	7.262	677.2E6	220.0E6	546.474	533.755

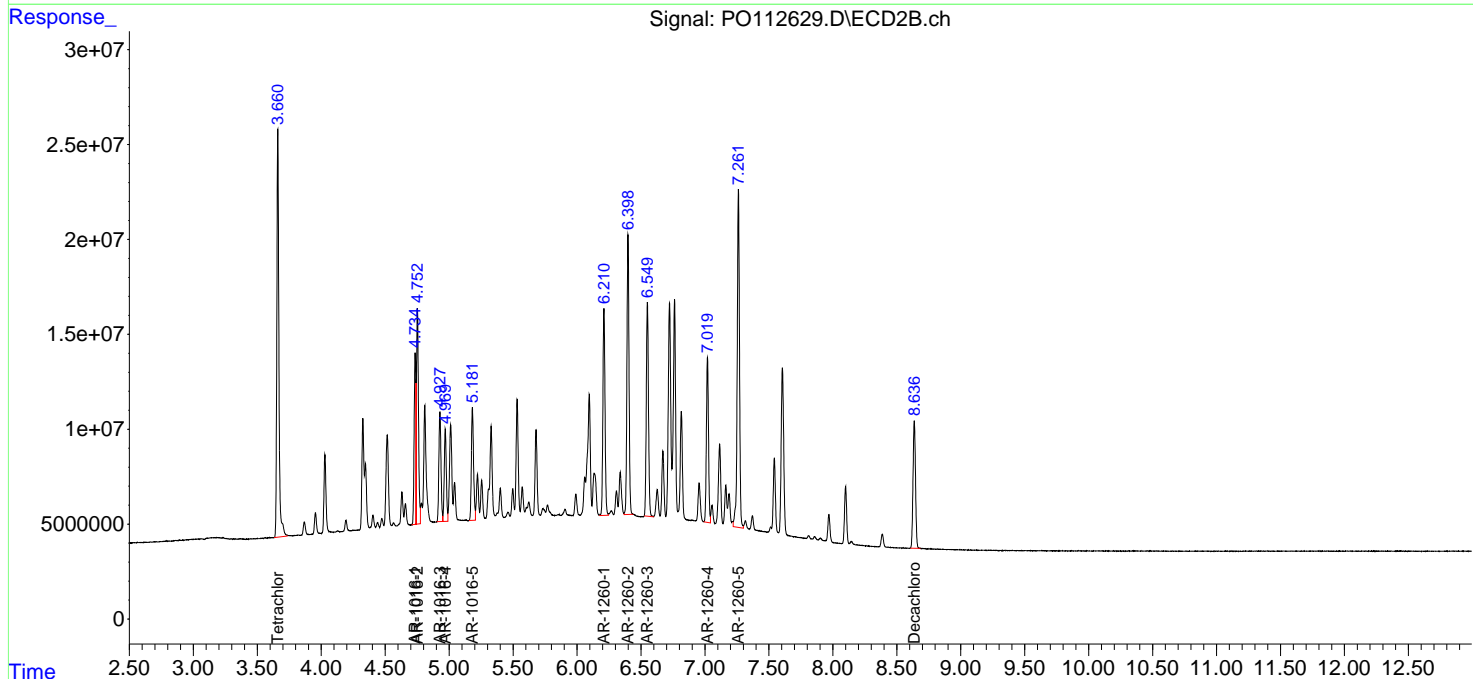
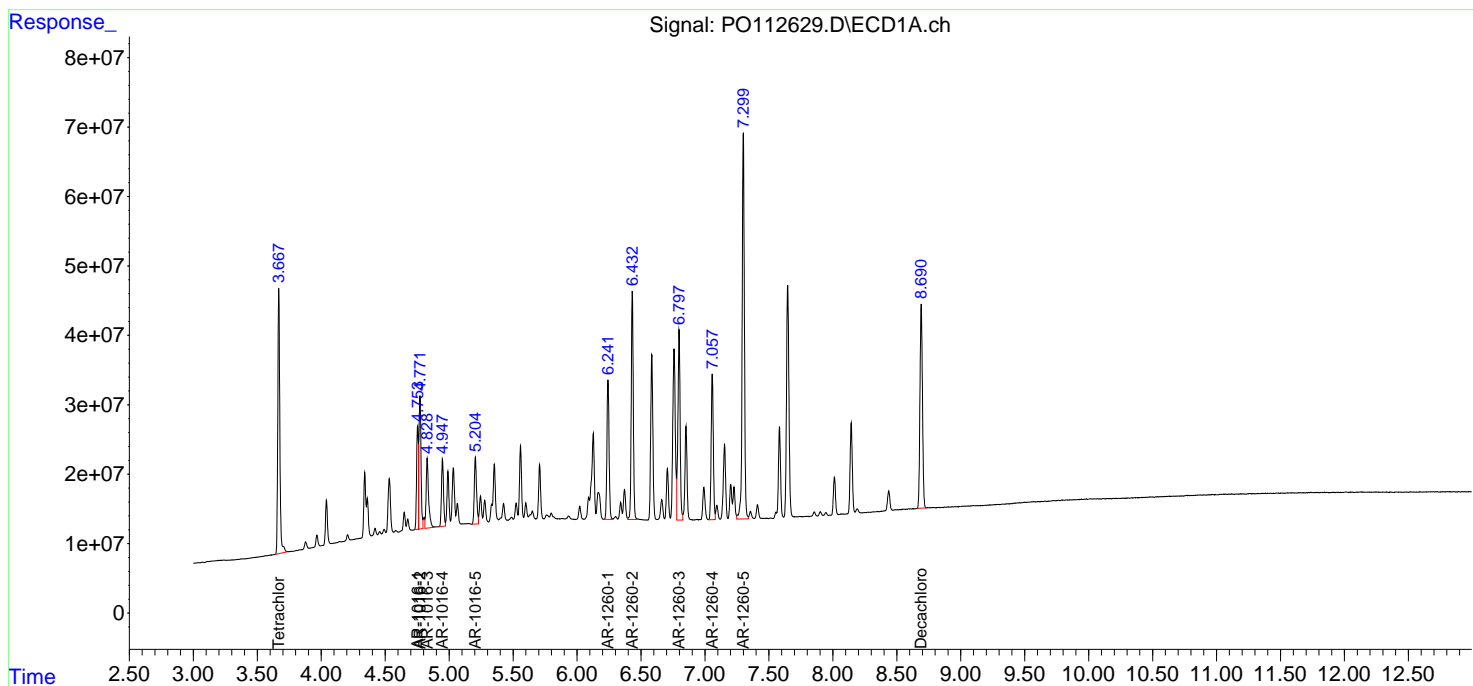
(f)=RT Delta > 1/2 Window (#)=Amounts differ by > 25% (m)=manual int.

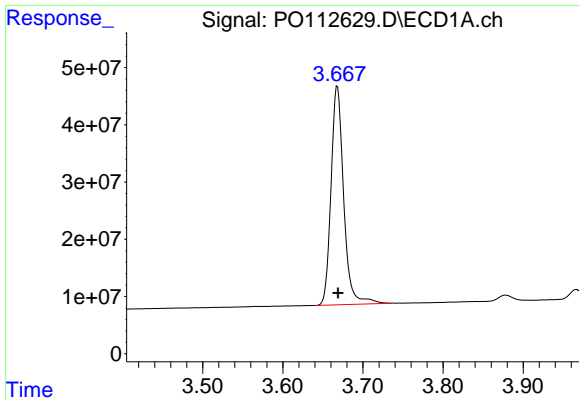
Data Path : Z:\pestpcbsrv\HPCHEM1\ECD\_O\Data\P0073125\  
 Data File : P0112629.D  
 Signal(s) : Signal #1: ECD1A.ch Signal #2: ECD2B.ch  
 Acq On : 31 Jul 2025 08:54  
 Operator : YP/AJ  
 Sample : AR1660CCC500  
 Misc :  
 ALS Vial : 3 Sample Multiplier: 1

Instrument :  
 ECD\_O  
 ClientSampleId :  
 AR1660CCC500

Integration File signal 1: autoint1.e  
 Integration File signal 2: autoint2.e  
 Quant Time: Jul 31 12:07:32 2025  
 Quant Method : Z:\pestpcbsrv\HPCHEM1\ECD\_O\methods\P0072325.M  
 Quant Title : GC EXTRACTABLES  
 QLast Update : Thu Jul 24 04:54:06 2025  
 Response via : Initial Calibration  
 Integrator: ChemStation

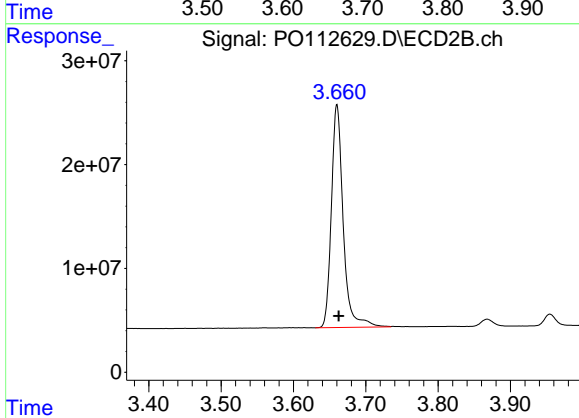
Volume Inj. : 2 µl  
 Signal #1 Phase : ZB-MR1 Signal #2 Phase: ZB-MR2  
 Signal #1 Info : 30Mx0.32mmx 0.50µ Signal #2 Info : 30M x 0.32mm x 0.25µm



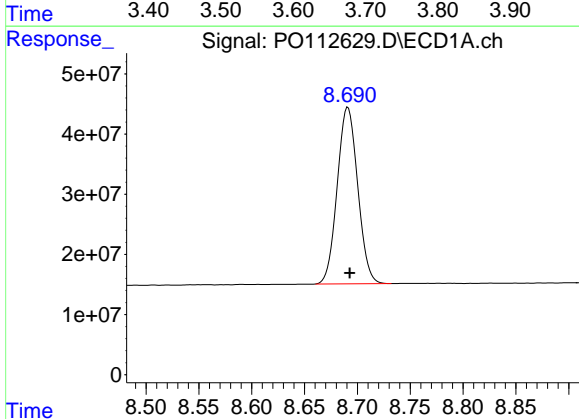


#1 Tetrachloro-m-xylene  
 R.T.: 3.668 min  
 Delta R.T.: 0.000 min  
 Response: 418105625  
 Conc: 51.42 ng/ml

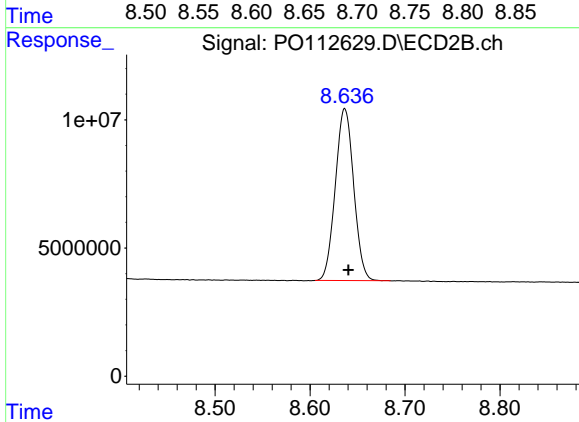
Instrument :  
 ECD\_O  
 ClientSampleId :  
 AR1660CCC500



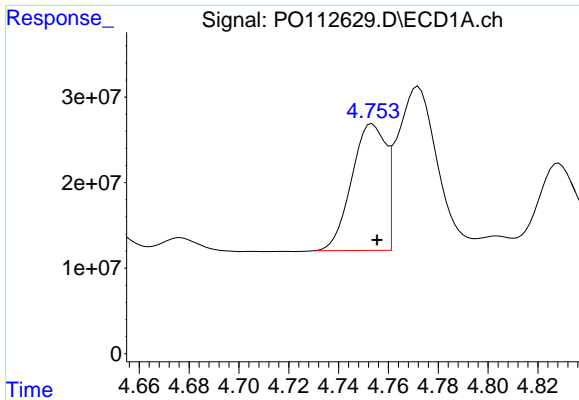
#1 Tetrachloro-m-xylene  
 R.T.: 3.660 min  
 Delta R.T.: -0.002 min  
 Response: 243971994  
 Conc: 49.10 ng/ml



#2 Decachlorobiphenyl  
 R.T.: 8.691 min  
 Delta R.T.: -0.002 min  
 Response: 396554805  
 Conc: 54.23 ng/ml



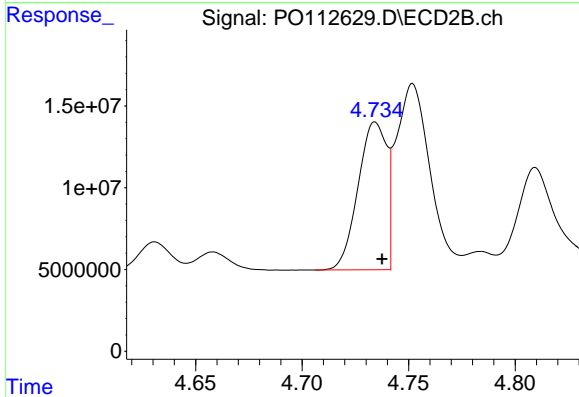
#2 Decachlorobiphenyl  
 R.T.: 8.637 min  
 Delta R.T.: -0.004 min  
 Response: 90273794  
 Conc: 51.09 ng/ml



#3 AR-1016-1

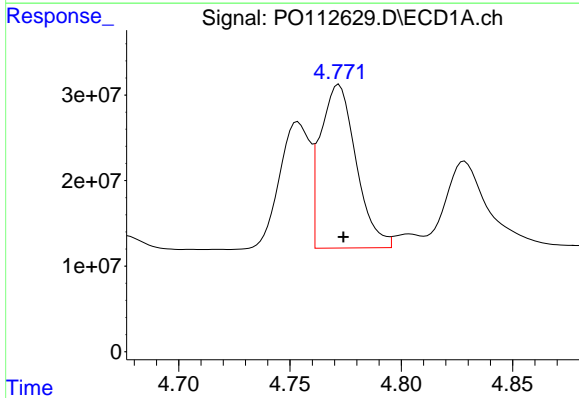
R.T.: 4.754 min  
 Delta R.T.: -0.002 min  
 Response: 140396417  
 Conc: 523.15 ng/ml

Instrument :  
 ECD\_O  
 ClientSampleId :  
 AR1660CCC500



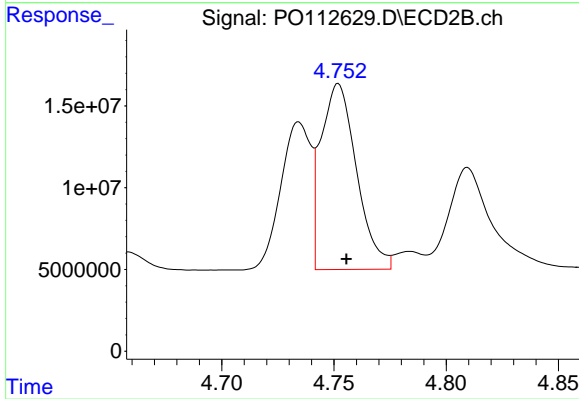
#3 AR-1016-1

R.T.: 4.734 min  
 Delta R.T.: -0.003 min  
 Response: 84399246  
 Conc: 482.26 ng/ml



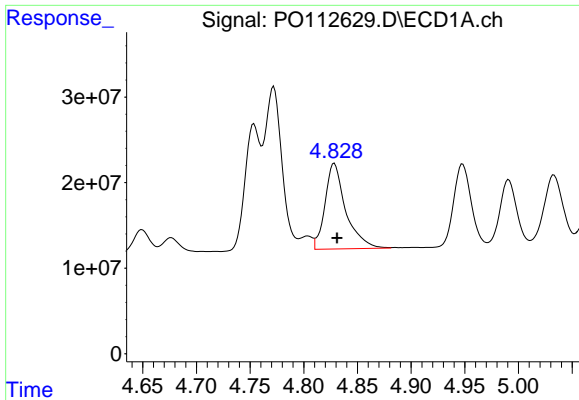
#4 AR-1016-2

R.T.: 4.772 min  
 Delta R.T.: -0.002 min  
 Response: 213312762  
 Conc: 525.25 ng/ml



#4 AR-1016-2

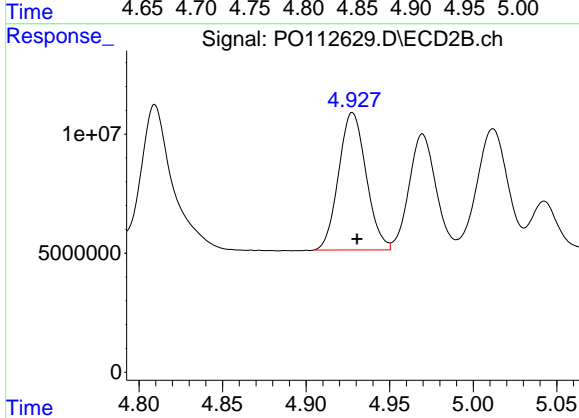
R.T.: 4.752 min  
 Delta R.T.: -0.004 min  
 Response: 125605719  
 Conc: 482.18 ng/ml



#5 AR-1016-3

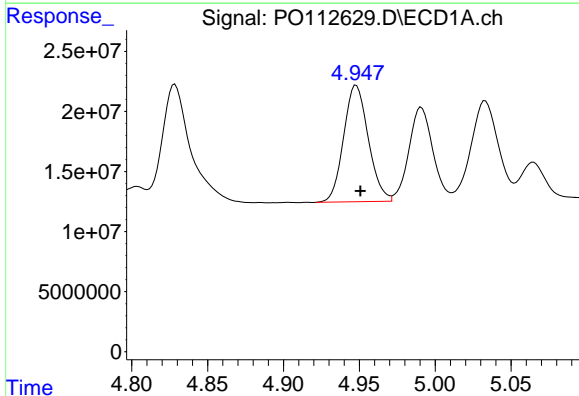
R.T.: 4.828 min  
 Delta R.T.: -0.003 min  
 Response: 134806565  
 Conc: 515.17 ng/ml

Instrument :  
 ECD\_O  
 ClientSampleId :  
 AR1660CCC500



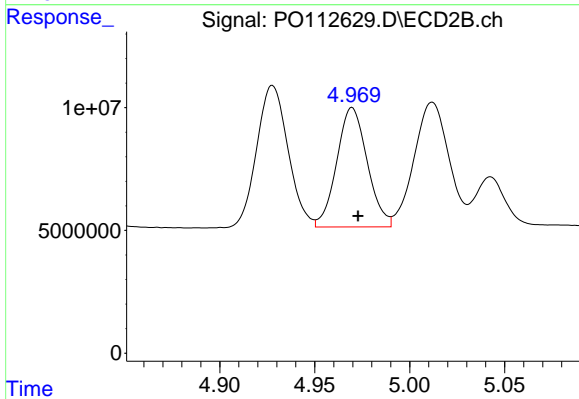
#5 AR-1016-3

R.T.: 4.928 min  
 Delta R.T.: -0.003 min  
 Response: 66115256  
 Conc: 486.26 ng/ml



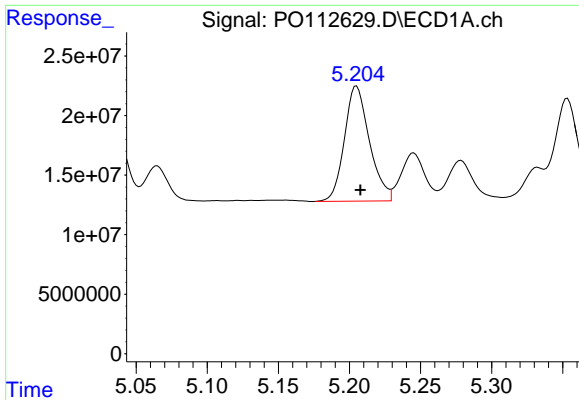
#6 AR-1016-4

R.T.: 4.948 min  
 Delta R.T.: -0.003 min  
 Response: 110010734  
 Conc: 519.31 ng/ml



#6 AR-1016-4

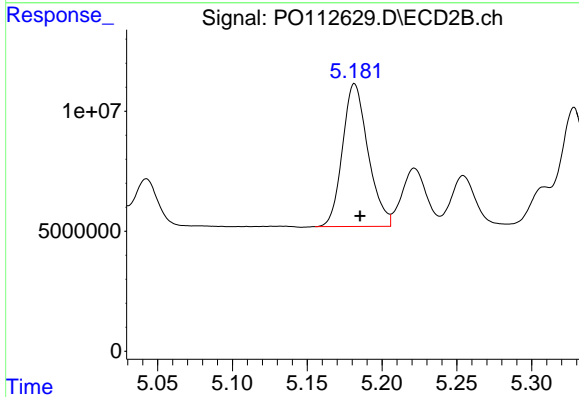
R.T.: 4.970 min  
 Delta R.T.: -0.003 min  
 Response: 54391940  
 Conc: 489.64 ng/ml



#7 AR-1016-5

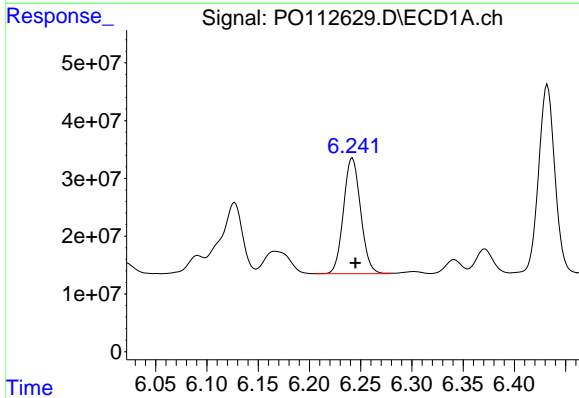
R.T.: 5.205 min  
 Delta R.T.: -0.003 min  
 Response: 118315339  
 Conc: 539.09 ng/ml

Instrument :  
 ECD\_O  
 ClientSampleId :  
 AR1660CCC500



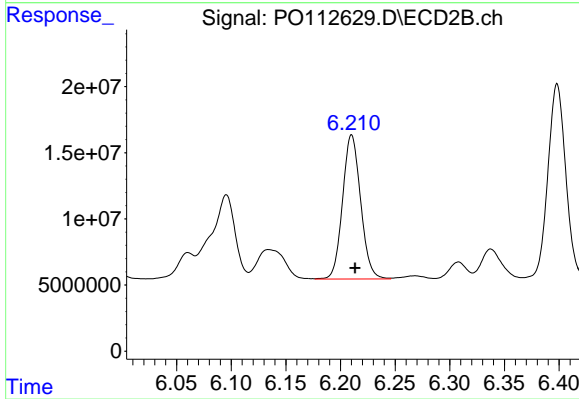
#7 AR-1016-5

R.T.: 5.182 min  
 Delta R.T.: -0.004 min  
 Response: 70580946  
 Conc: 492.53 ng/ml



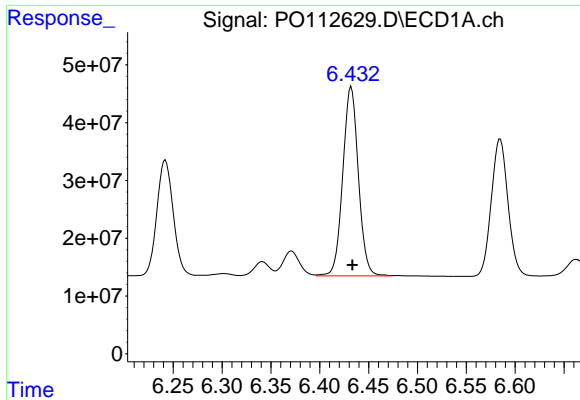
#31 AR-1260-1

R.T.: 6.242 min  
 Delta R.T.: -0.003 min  
 Response: 232917029  
 Conc: 530.16 ng/ml



#31 AR-1260-1

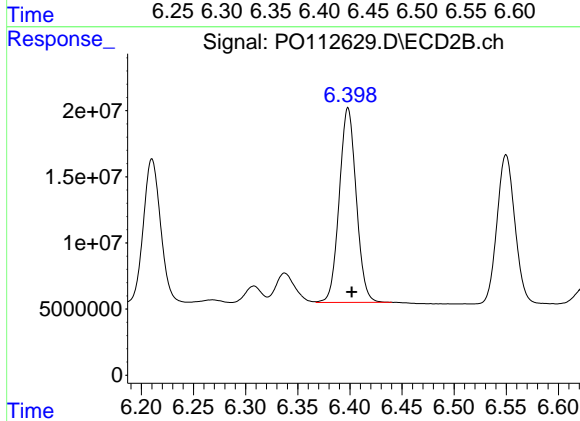
R.T.: 6.210 min  
 Delta R.T.: -0.003 min  
 Response: 125450843  
 Conc: 504.81 ng/ml



#32 AR-1260-2

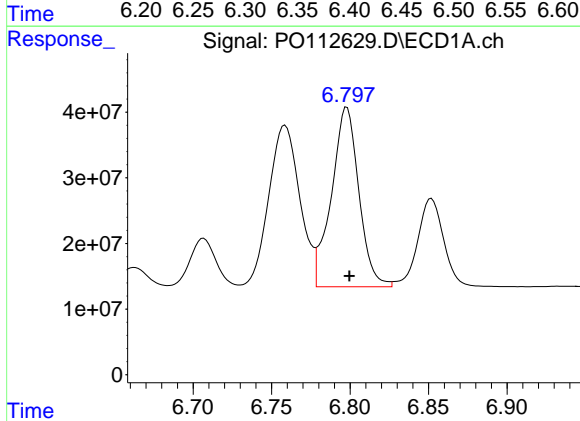
R.T.: 6.432 min  
 Delta R.T.: -0.001 min  
 Response: 362851290  
 Conc: 527.48 ng/ml

Instrument :  
 ECD\_O  
 ClientSampleId :  
 AR1660CCC500



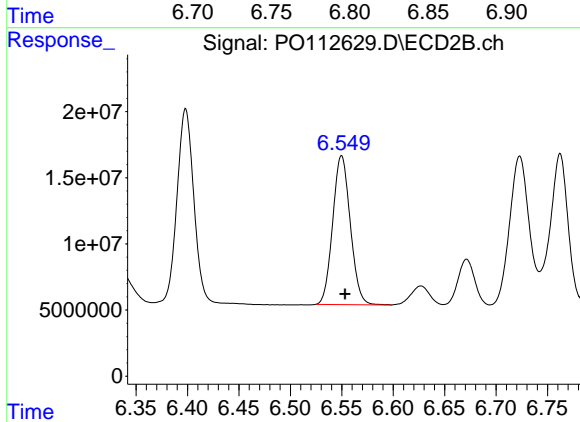
#32 AR-1260-2

R.T.: 6.398 min  
 Delta R.T.: -0.004 min  
 Response: 166696481  
 Conc: 505.92 ng/ml



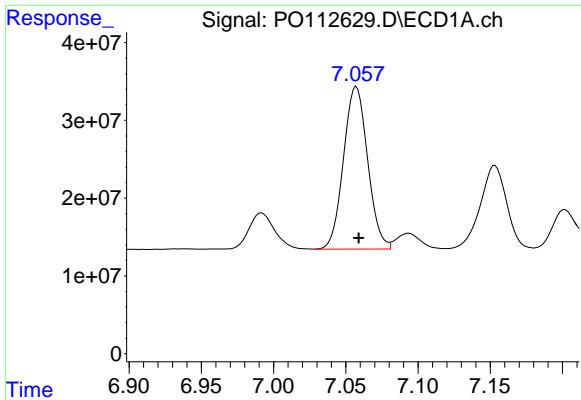
#33 AR-1260-3

R.T.: 6.798 min  
 Delta R.T.: -0.002 min  
 Response: 333634607  
 Conc: 567.39 ng/ml



#33 AR-1260-3

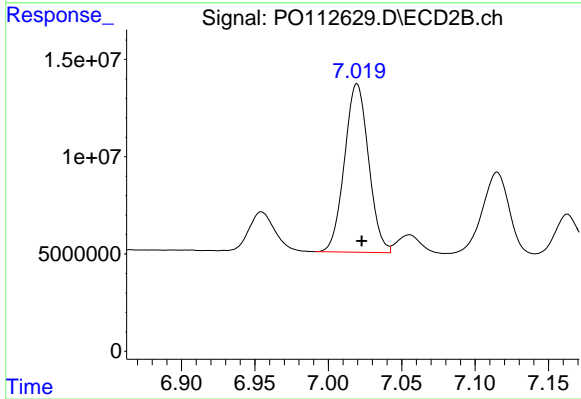
R.T.: 6.550 min  
 Delta R.T.: -0.003 min  
 Response: 134118712  
 Conc: 522.02 ng/ml



#34 AR-1260-4

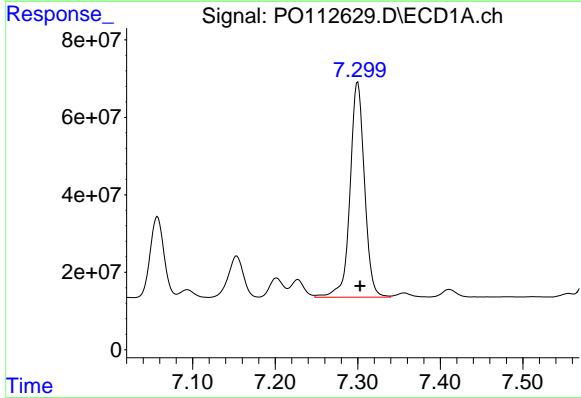
R.T.: 7.057 min  
Delta R.T.: -0.002 min  
Response: 242533063  
Conc: 537.76 ng/ml

Instrument :  
ECD\_O  
ClientSampleId :  
AR1660CCC500



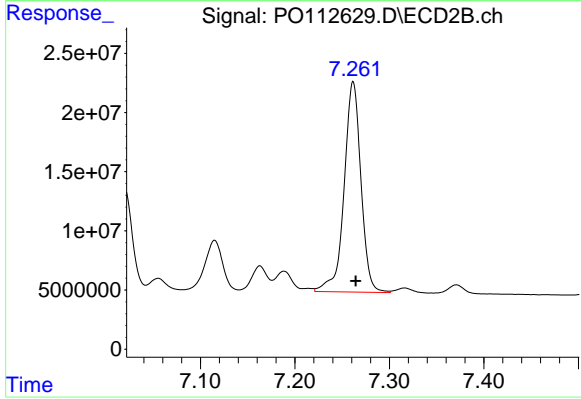
#34 AR-1260-4

R.T.: 7.020 min  
Delta R.T.: -0.003 min  
Response: 98902034  
Conc: 516.97 ng/ml



#35 AR-1260-5

R.T.: 7.300 min  
Delta R.T.: -0.003 min  
Response: 677156696  
Conc: 546.47 ng/ml



#35 AR-1260-5

R.T.: 7.262 min  
Delta R.T.: -0.003 min  
Response: 220010621  
Conc: 533.76 ng/ml