

Data Path : Z:\pestpcbsrv\HPCHEM1\ECD_0\Data\P0073125\
 Data File : PO112630.D
 Signal(s) : Signal #1: ECD1A.ch Signal #2: ECD2B.ch
 Acq On : 31 Jul 2025 09:14
 Operator : YP/AJ
 Sample : AR1242CCC500
 Misc :
 ALS Vial : 4 Sample Multiplier: 1

Instrument :
 ECD_0
 ClientSampleId :
 AR1242CCC500

Integration File signal 1: autoint1.e
 Integration File signal 2: autoint2.e
 Quant Time: Jul 31 12:08:16 2025
 Quant Method : Z:\pestpcbsrv\HPCHEM1\ECD_0\methods\P0072325.M
 Quant Title : GC EXTRACTABLES
 QLast Update : Thu Jul 24 04:54:06 2025
 Response via : Initial Calibration
 Integrator: ChemStation

Volume Inj. : 2 µl
 Signal #1 Phase : ZB-MR1 Signal #2 Phase: ZB-MR2
 Signal #1 Info : 30Mx0.32mmx 0.50µ Signal #2 Info : 30M x 0.32mm x 0.25µm

Compound	RT#1	RT#2	Resp#1	Resp#2	ng/ml	ng/ml

System Monitoring Compounds						
1) SA Tetrachlo...	3.671	3.661	390.8E6	227.2E6	48.061	45.722
2) SA Decachlor...	8.694	8.637	364.5E6	83491360	49.851	47.247
Target Compounds						
16) L4 AR-1242-1	4.757	4.736	113.4E6	68064789	457.913	429.718
17) L4 AR-1242-2	4.776	4.754	171.2E6	100.6E6	462.965	430.365
18) L4 AR-1242-3	4.833	4.929	107.4E6	53163740	453.888	438.684
19) L4 AR-1242-4	4.952	5.014	88300113	51953178	454.503	423.280
20) L4 AR-1242-5	5.603	5.533	102.4E6	71580762	478.862	444.680

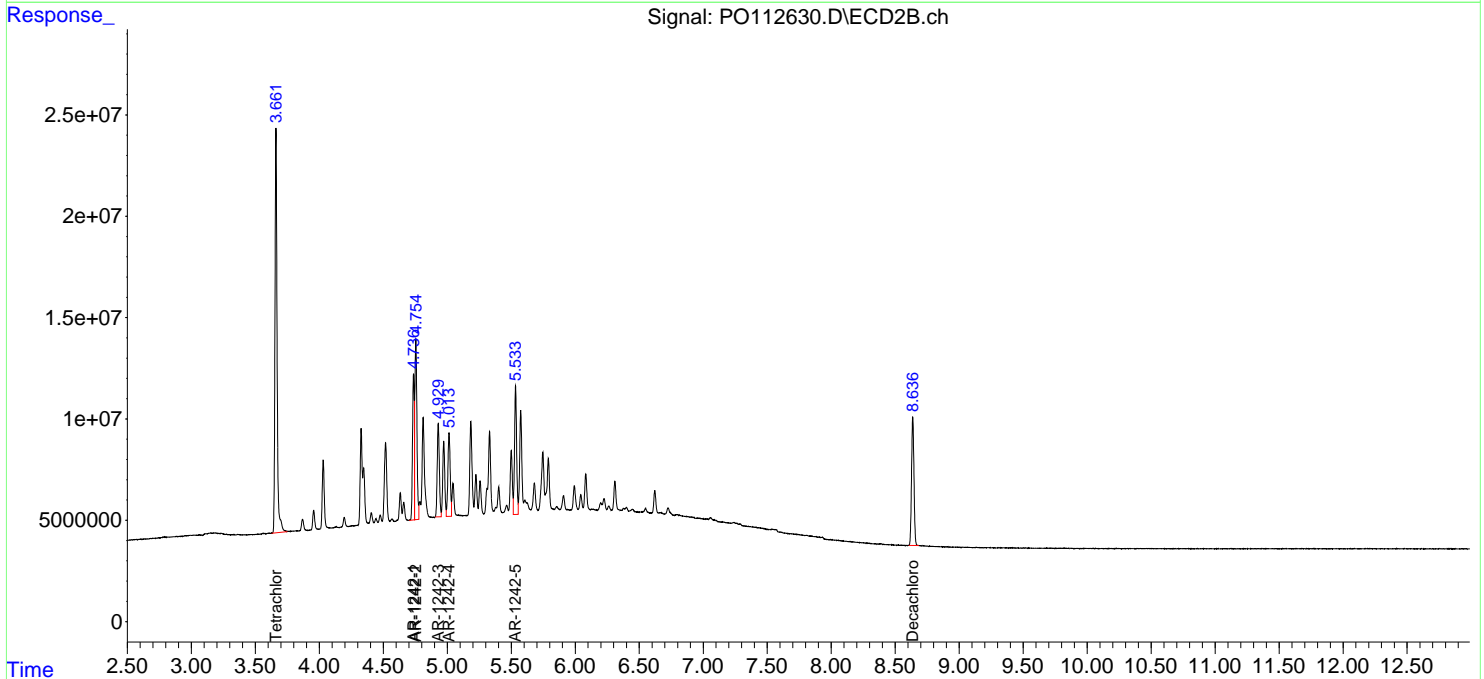
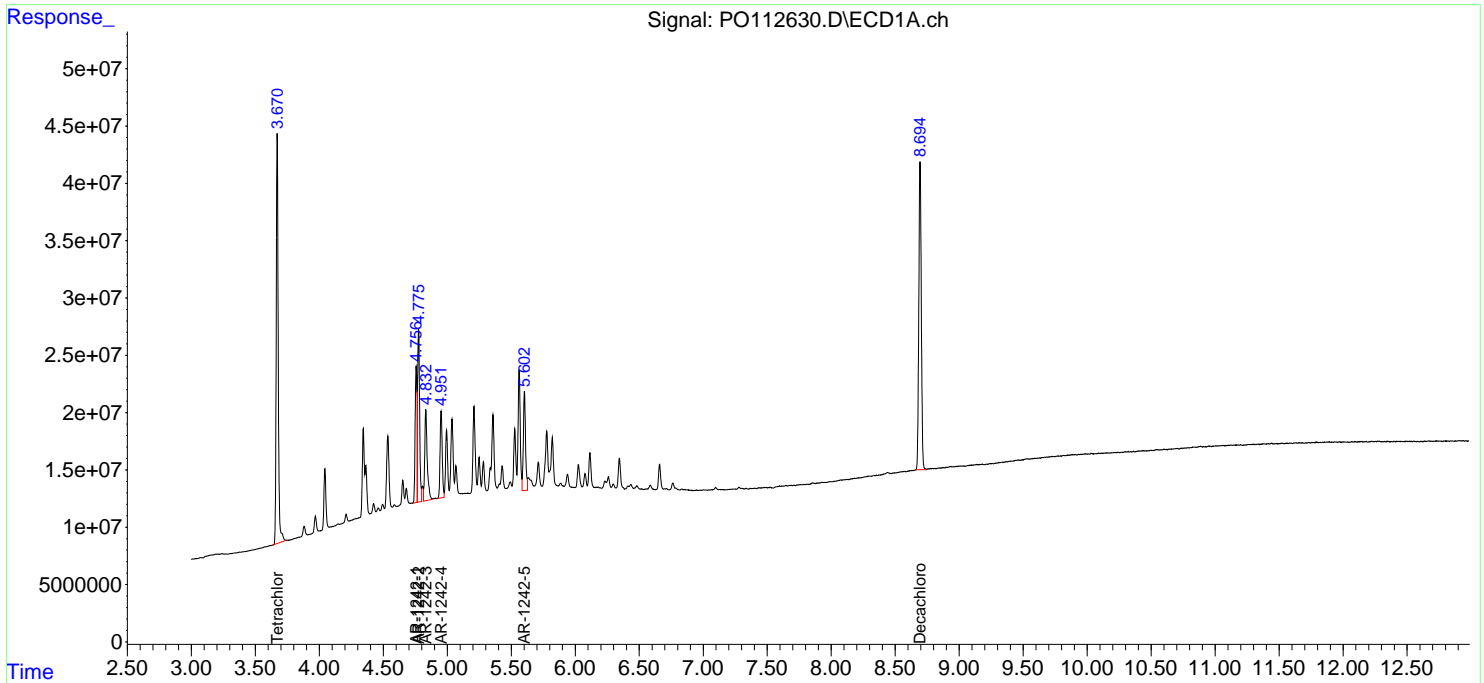
(f)=RT Delta > 1/2 Window (#)=Amounts differ by > 25% (m)=manual int.

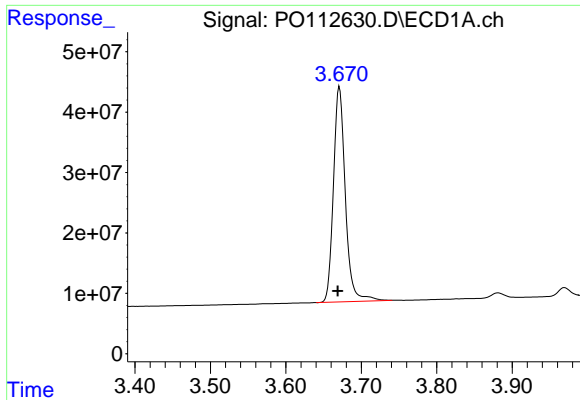
Data Path : Z:\pestpcbsrv\HPCHEM1\ECD_O\Data\P0073125\
 Data File : P0112630.D
 Signal(s) : Signal #1: ECD1A.ch Signal #2: ECD2B.ch
 Acq On : 31 Jul 2025 09:14
 Operator : YP/AJ
 Sample : AR1242CCC500
 Misc :
 ALS Vial : 4 Sample Multiplier: 1

Instrument :
 ECD_O
 ClientSampleId :
 AR1242CCC500

Integration File signal 1: autoint1.e
 Integration File signal 2: autoint2.e
 Quant Time: Jul 31 12:08:16 2025
 Quant Method : Z:\pestpcbsrv\HPCHEM1\ECD_O\methods\P0072325.M
 Quant Title : GC EXTRACTABLES
 QLast Update : Thu Jul 24 04:54:06 2025
 Response via : Initial Calibration
 Integrator: ChemStation

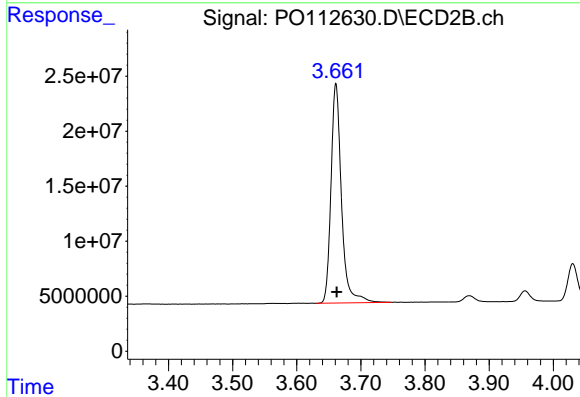
Volume Inj. : 2 µl
 Signal #1 Phase : ZB-MR1 Signal #2 Phase: ZB-MR2
 Signal #1 Info : 30Mx0.32mmx 0.50µ Signal #2 Info : 30M x 0.32mm x 0.25µm



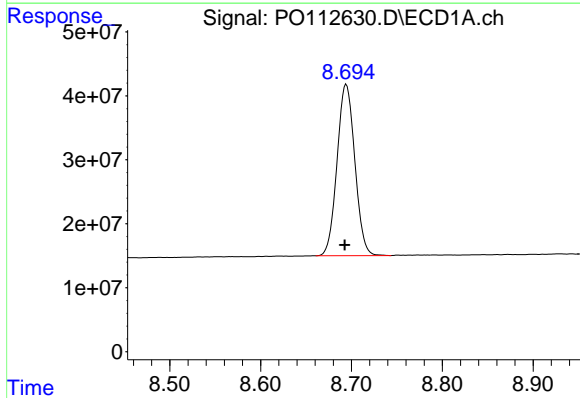


#1 Tetrachloro-m-xylene
 R.T.: 3.671 min
 Delta R.T.: 0.002 min
 Response: 390808861
 Conc: 48.06 ng/ml

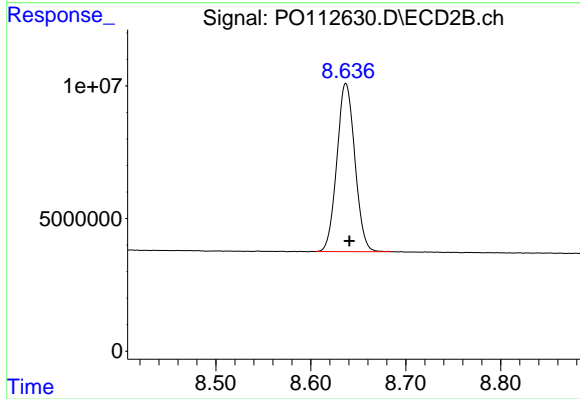
Instrument :
 ECD_O
 ClientSampleId :
 AR1242CCC500



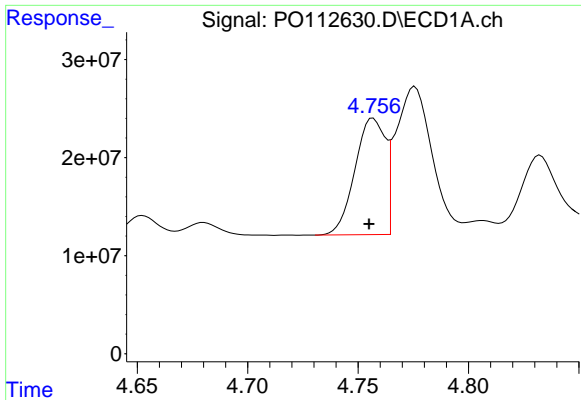
#1 Tetrachloro-m-xylene
 R.T.: 3.661 min
 Delta R.T.: -0.001 min
 Response: 227200476
 Conc: 45.72 ng/ml



#2 Decachlorobiphenyl
 R.T.: 8.694 min
 Delta R.T.: 0.002 min
 Response: 364502272
 Conc: 49.85 ng/ml



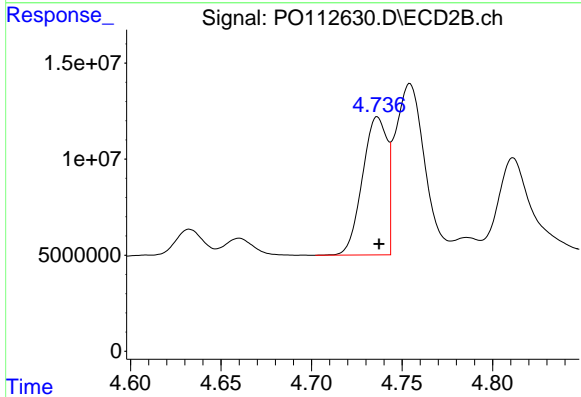
#2 Decachlorobiphenyl
 R.T.: 8.637 min
 Delta R.T.: -0.004 min
 Response: 83491360
 Conc: 47.25 ng/ml



#16 AR-1242-1

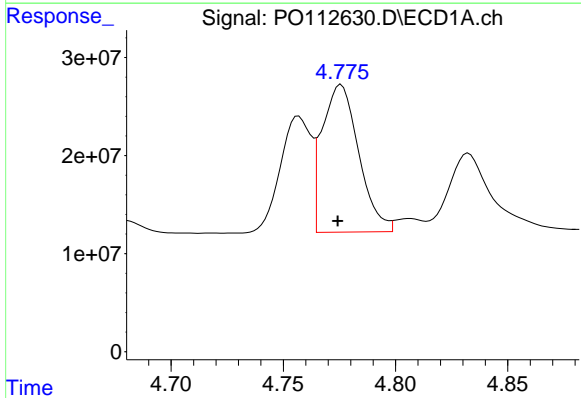
R.T.: 4.757 min
 Delta R.T.: 0.002 min
 Response: 113375491
 Conc: 457.91 ng/ml

Instrument :
 ECD_O
 ClientSampleId :
 AR1242CCC500



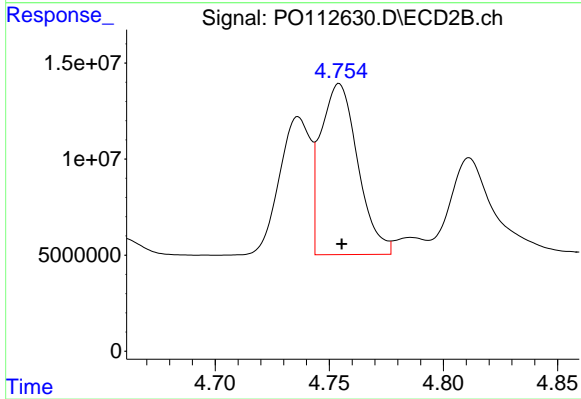
#16 AR-1242-1

R.T.: 4.736 min
 Delta R.T.: 0.000 min
 Response: 68064789
 Conc: 429.72 ng/ml



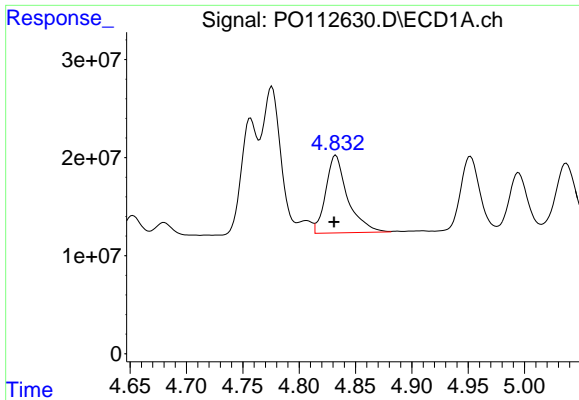
#17 AR-1242-2

R.T.: 4.776 min
 Delta R.T.: 0.002 min
 Response: 171201374
 Conc: 462.96 ng/ml



#17 AR-1242-2

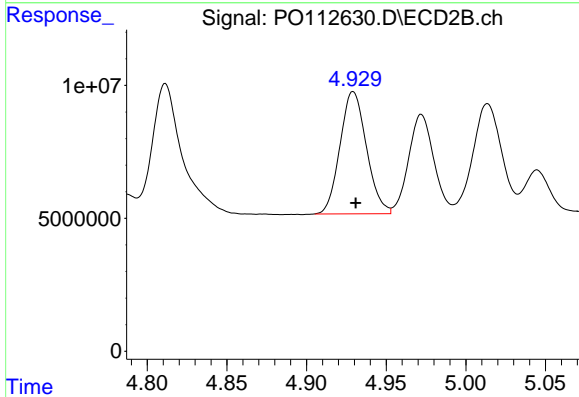
R.T.: 4.754 min
 Delta R.T.: -0.001 min
 Response: 100561817
 Conc: 430.36 ng/ml



#18 AR-1242-3

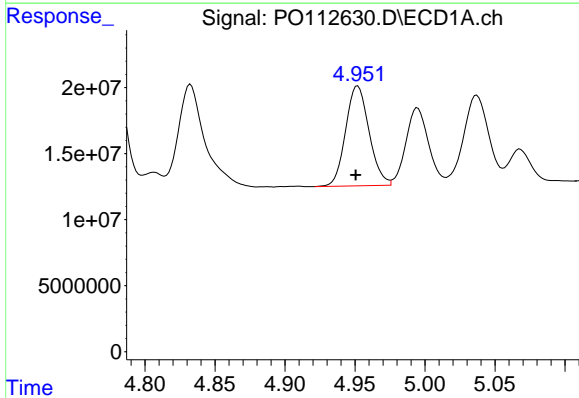
R.T.: 4.833 min
 Delta R.T.: 0.002 min
 Response: 107416034
 Conc: 453.89 ng/ml

Instrument :
 ECD_O
 ClientSampleId :
 AR1242CCC500



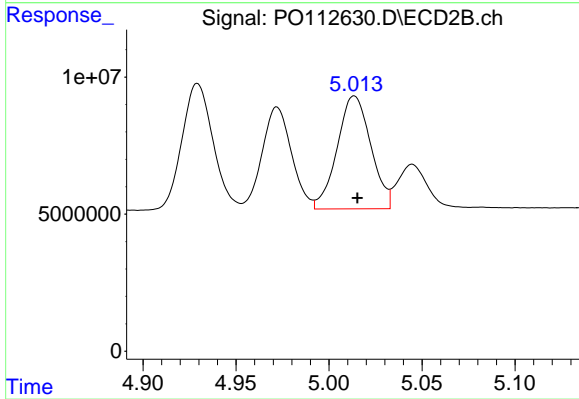
#18 AR-1242-3

R.T.: 4.929 min
 Delta R.T.: -0.002 min
 Response: 53163740
 Conc: 438.68 ng/ml



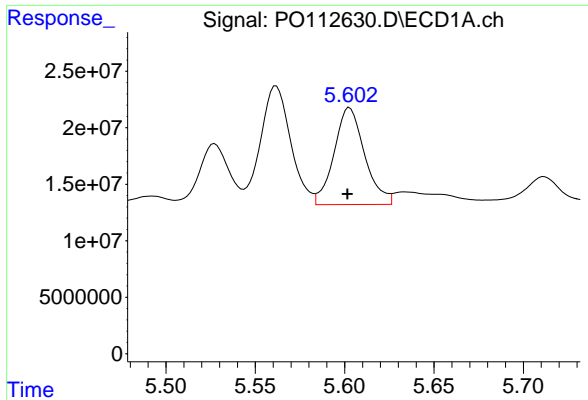
#19 AR-1242-4

R.T.: 4.952 min
 Delta R.T.: 0.001 min
 Response: 88300113
 Conc: 454.50 ng/ml



#19 AR-1242-4

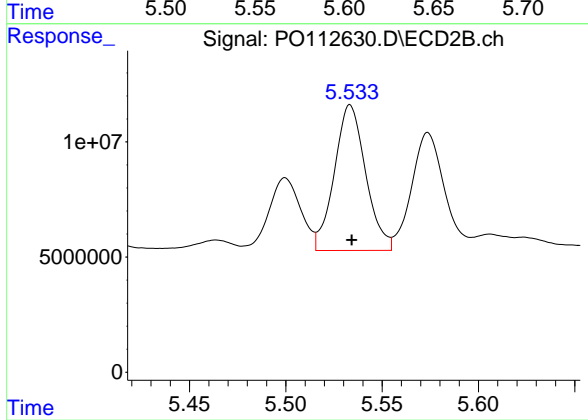
R.T.: 5.014 min
 Delta R.T.: -0.002 min
 Response: 51953178
 Conc: 423.28 ng/ml



#20 AR-1242-5

R.T.: 5.603 min
Delta R.T.: 0.001 min
Response: 102436022
Conc: 478.86 ng/ml

Instrument :
ECD_O
ClientSampleId :
AR1242CCC500



#20 AR-1242-5

R.T.: 5.533 min
Delta R.T.: 0.000 min
Response: 71580762
Conc: 444.68 ng/ml