

Data Path : Z:\pestpcbsrv\HPCHEM1\ECD_0\Data\P0073125\
 Data File : P0112631.D
 Signal(s) : Signal #1: ECD1A.ch Signal #2: ECD2B.ch
 Acq On : 31 Jul 2025 09:33
 Operator : YP/AJ
 Sample : AR1248CCC500
 Misc :
 ALS Vial : 5 Sample Multiplier: 1

Instrument :
 ECD_0
 ClientSampleId :
 AR1248CCC500

Integration File signal 1: autoint1.e
 Integration File signal 2: autoint2.e
 Quant Time: Jul 31 12:08:57 2025
 Quant Method : Z:\pestpcbsrv\HPCHEM1\ECD_0\methods\P0072325.M
 Quant Title : GC EXTRACTABLES
 QLast Update : Thu Jul 24 04:54:06 2025
 Response via : Initial Calibration
 Integrator: ChemStation

Volume Inj. : 2 µl
 Signal #1 Phase : ZB-MR1 Signal #2 Phase: ZB-MR2
 Signal #1 Info : 30Mx0.32mmx 0.50µ Signal #2 Info : 30M x 0.32mm x 0.25µm

Compound	RT#1	RT#2	Resp#1	Resp#2	ng/ml	ng/ml

System Monitoring Compounds						
1) SA Tetrachlo...	3.668	3.661	399.9E6	233.1E6	49.178	46.909
2) SA Decachlor...	8.693	8.638	386.0E6	87614412	52.792	49.581
Target Compounds						
21) L5 AR-1248-1	4.754	4.735	87611968	53512932	467.991	440.402
22) L5 AR-1248-2	4.992	4.971	121.4E6	75830545	475.764	447.960
23) L5 AR-1248-3	5.206	5.012	157.2E6	79195994	457.235	445.805
24) L5 AR-1248-4	5.559	5.183	243.7E6	94487137	479.740	453.492
25) L5 AR-1248-5	5.600	5.573	168.0E6	98539389	480.525	458.824

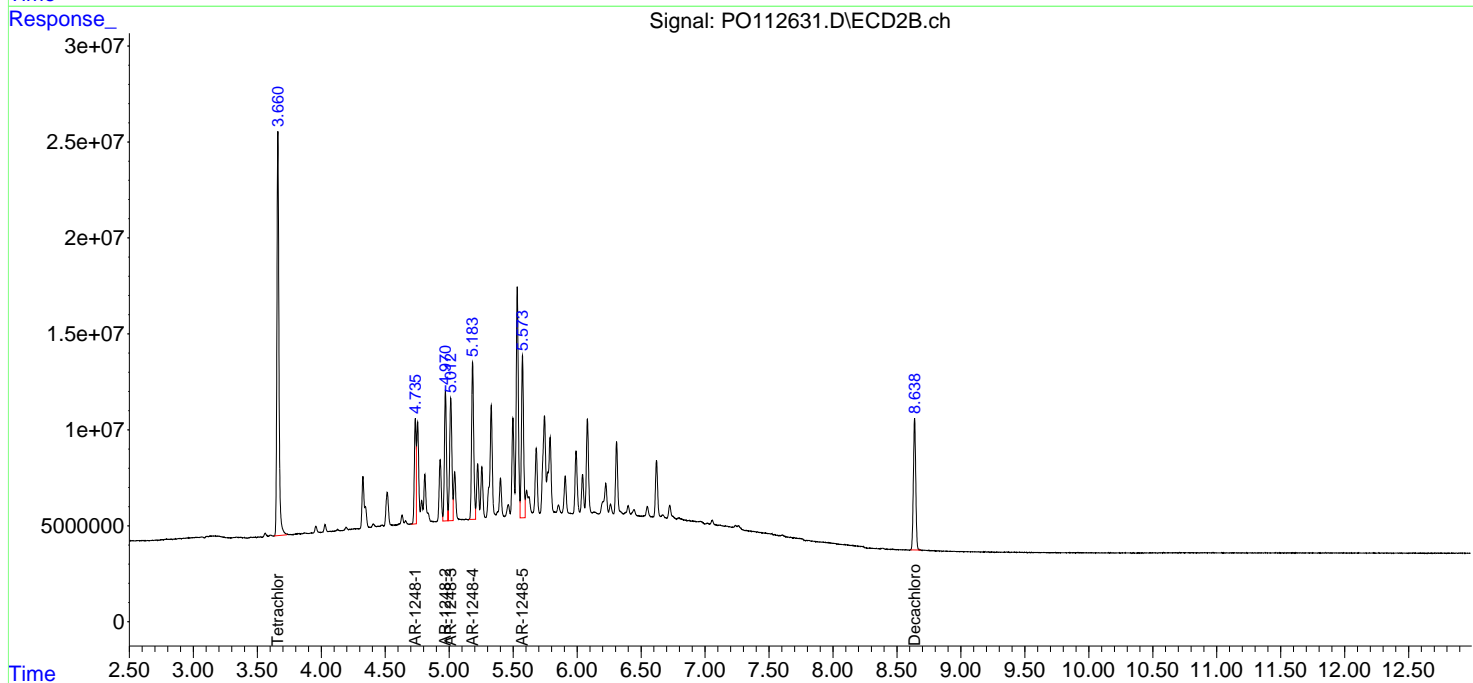
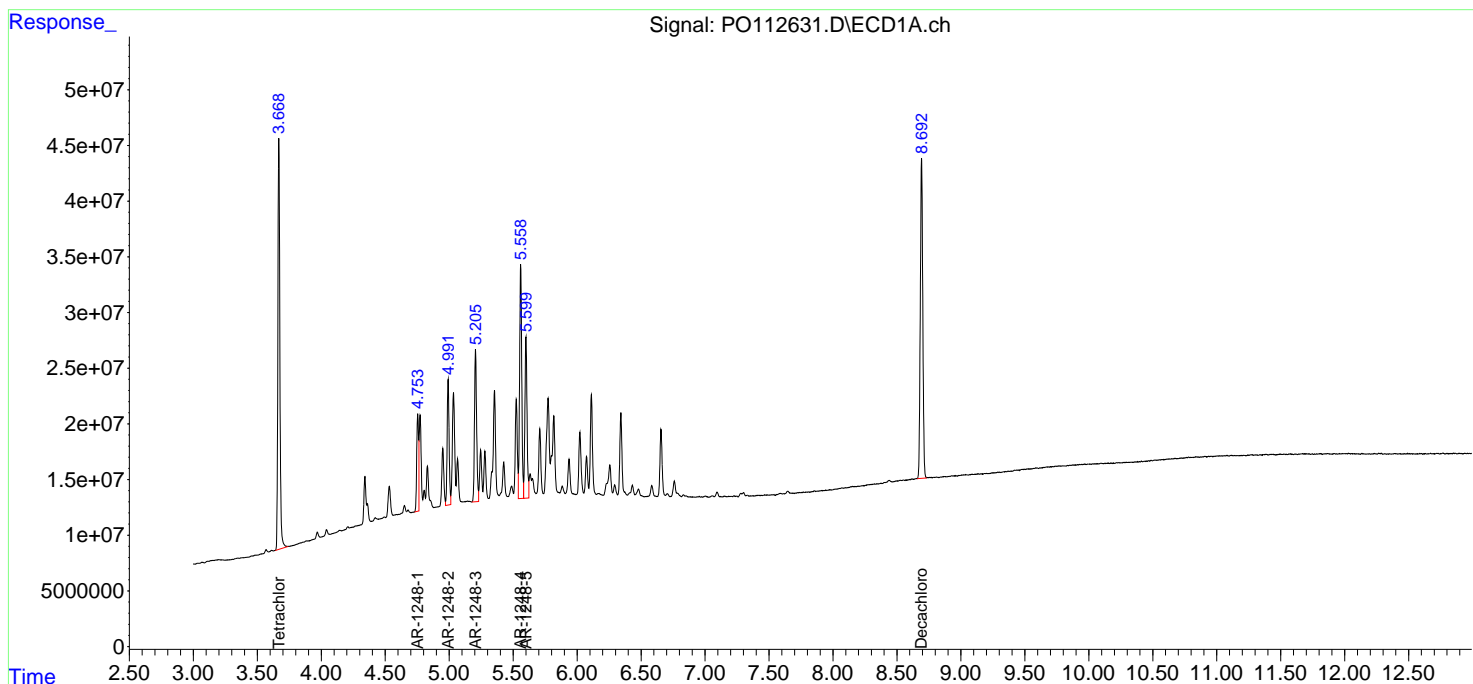
(f)=RT Delta > 1/2 Window (#)=Amounts differ by > 25% (m)=manual int.

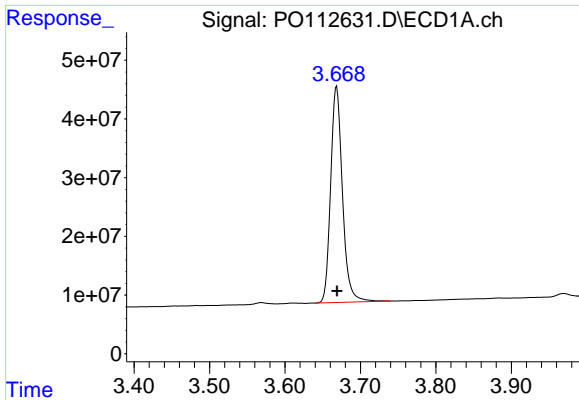
Data Path : Z:\pestpcbsrv\HPCHEM1\ECD_O\Data\P0073125\
 Data File : P0112631.D
 Signal(s) : Signal #1: ECD1A.ch Signal #2: ECD2B.ch
 Acq On : 31 Jul 2025 09:33
 Operator : YP/AJ
 Sample : AR1248CCC500
 Misc :
 ALS Vial : 5 Sample Multiplier: 1

Instrument :
 ECD_O
 ClientSampleId :
 AR1248CCC500

Integration File signal 1: autoint1.e
 Integration File signal 2: autoint2.e
 Quant Time: Jul 31 12:08:57 2025
 Quant Method : Z:\pestpcbsrv\HPCHEM1\ECD_O\methods\P0072325.M
 Quant Title : GC EXTRACTABLES
 QLast Update : Thu Jul 24 04:54:06 2025
 Response via : Initial Calibration
 Integrator: ChemStation

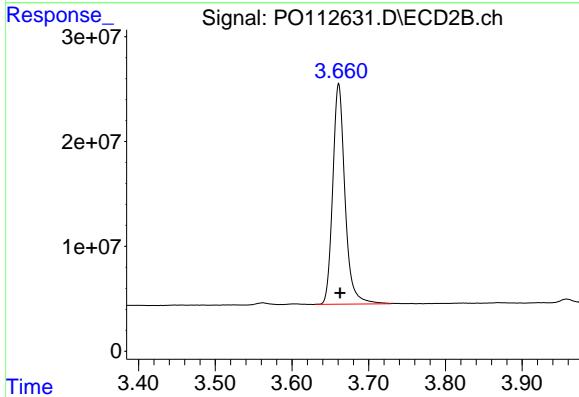
Volume Inj. : 2 µl
 Signal #1 Phase : ZB-MR1 Signal #2 Phase: ZB-MR2
 Signal #1 Info : 30Mx0.32mmx 0.50µ Signal #2 Info : 30M x 0.32mm x 0.25µm



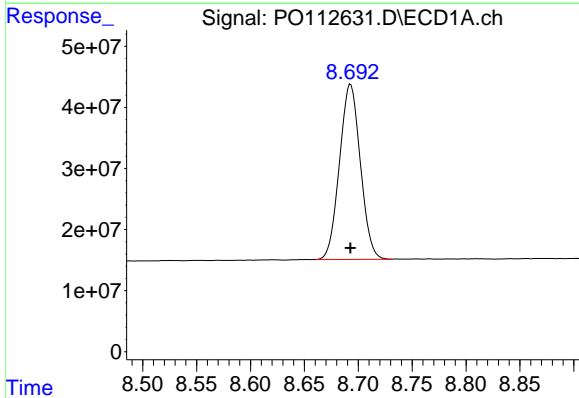


#1 Tetrachloro-m-xylene
 R.T.: 3.668 min
 Delta R.T.: 0.000 min
 Response: 399897107
 Conc: 49.18 ng/ml

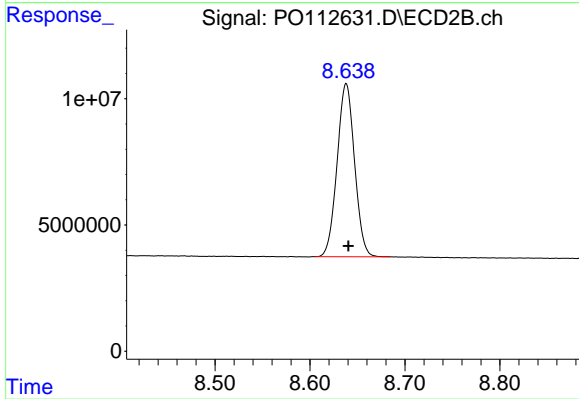
Instrument :
 ECD_O
 ClientSampleId :
 AR1248CCC500



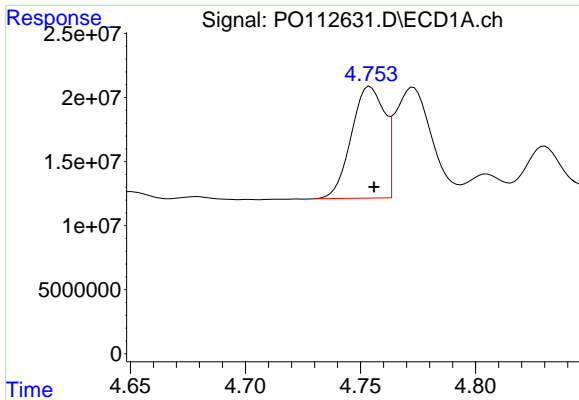
#1 Tetrachloro-m-xylene
 R.T.: 3.661 min
 Delta R.T.: -0.002 min
 Response: 233096805
 Conc: 46.91 ng/ml



#2 Decachlorobiphenyl
 R.T.: 8.693 min
 Delta R.T.: 0.000 min
 Response: 386002693
 Conc: 52.79 ng/ml



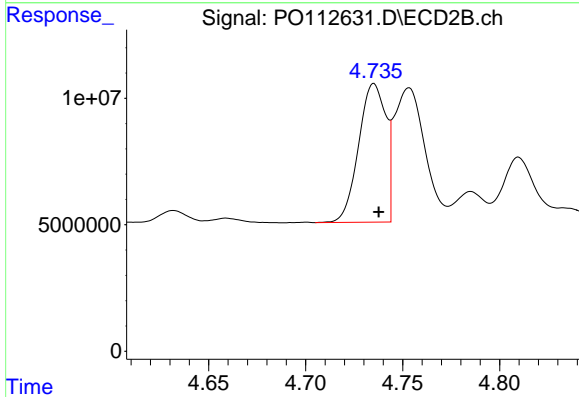
#2 Decachlorobiphenyl
 R.T.: 8.638 min
 Delta R.T.: -0.002 min
 Response: 87614412
 Conc: 49.58 ng/ml



#21 AR-1248-1

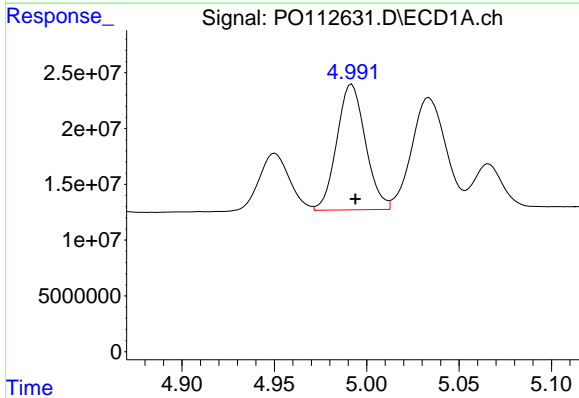
R.T.: 4.754 min
 Delta R.T.: -0.002 min
 Response: 87611968
 Conc: 467.99 ng/ml

Instrument :
 ECD_O
 ClientSampleId :
 AR1248CCC500



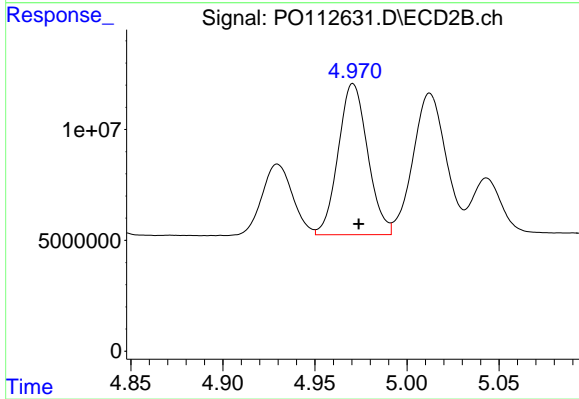
#21 AR-1248-1

R.T.: 4.735 min
 Delta R.T.: -0.003 min
 Response: 53512932
 Conc: 440.40 ng/ml



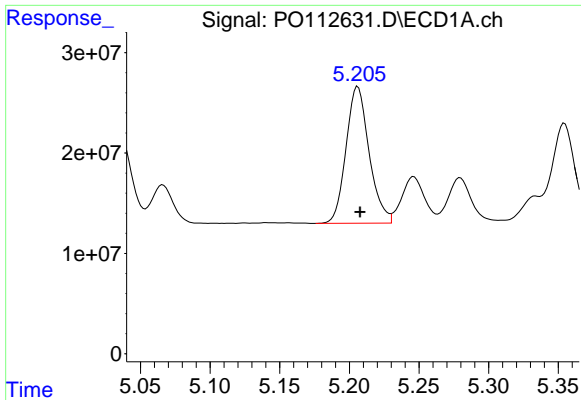
#22 AR-1248-2

R.T.: 4.992 min
 Delta R.T.: -0.002 min
 Response: 121373367
 Conc: 475.76 ng/ml



#22 AR-1248-2

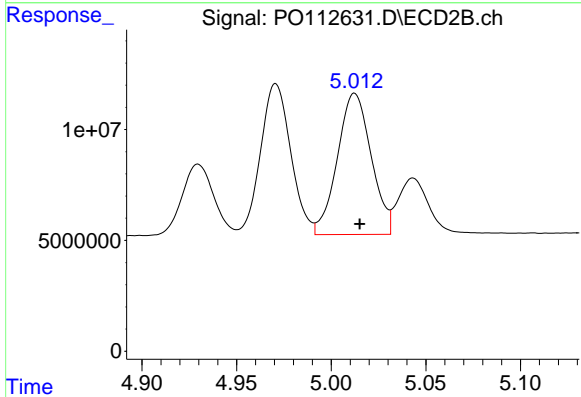
R.T.: 4.971 min
 Delta R.T.: -0.003 min
 Response: 75830545
 Conc: 447.96 ng/ml



#23 AR-1248-3

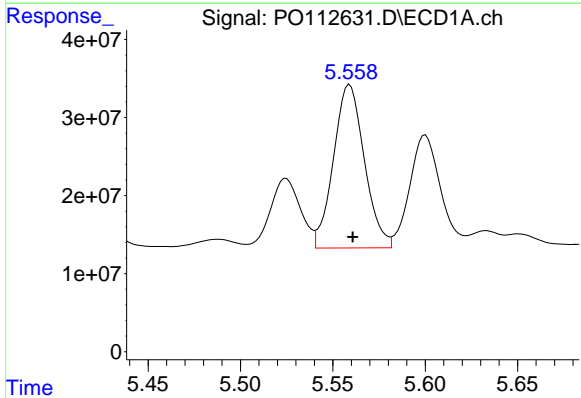
R.T.: 5.206 min
 Delta R.T.: -0.002 min
 Response: 157152325
 Conc: 457.24 ng/ml

Instrument :
 ECD_O
 ClientSampleId :
 AR1248CCC500



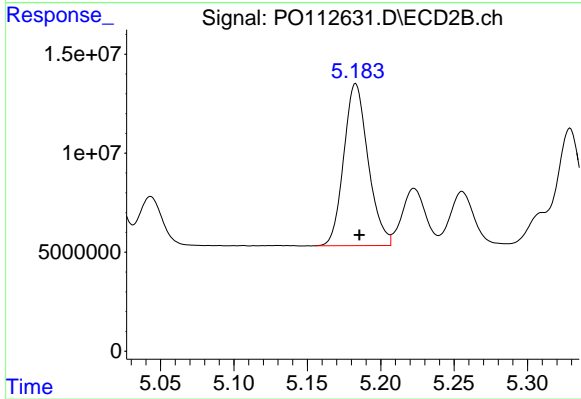
#23 AR-1248-3

R.T.: 5.012 min
 Delta R.T.: -0.003 min
 Response: 79195994
 Conc: 445.80 ng/ml



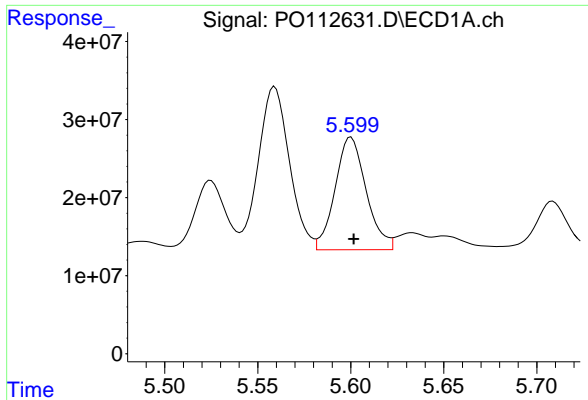
#24 AR-1248-4

R.T.: 5.559 min
 Delta R.T.: -0.002 min
 Response: 243745406
 Conc: 479.74 ng/ml



#24 AR-1248-4

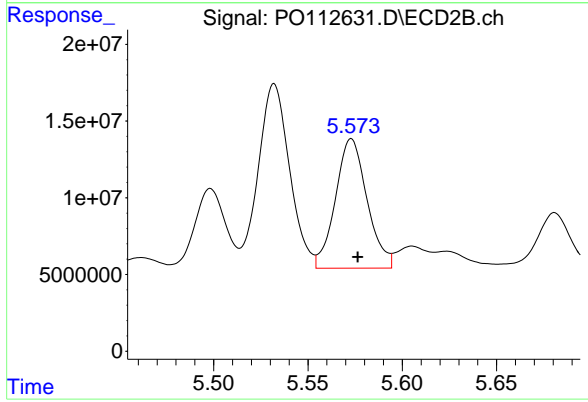
R.T.: 5.183 min
 Delta R.T.: -0.003 min
 Response: 94487137
 Conc: 453.49 ng/ml



#25 AR-1248-5

R.T.: 5.600 min
 Delta R.T.: -0.002 min
 Response: 167987339
 Conc: 480.53 ng/ml

Instrument :
 ECD_O
 ClientSampleId :
 AR1248CCC500



#25 AR-1248-5

R.T.: 5.573 min
 Delta R.T.: -0.003 min
 Response: 98539389
 Conc: 458.82 ng/ml