

Data Path : Z:\pestpcbsrv\HPCHEM1\ECD_0\Data\P0073125\
 Data File : P0112633.D
 Signal(s) : Signal #1: ECD1A.ch Signal #2: ECD2B.ch
 Acq On : 31 Jul 2025 10:09
 Operator : YP/AJ
 Sample : I.BLK
 Misc :
 ALS Vial : 2 Sample Multiplier: 1

Instrument :
 ECD_0
 ClientSampleId :
 I.BLK

Integration File signal 1: autoint1.e
 Integration File signal 2: autoint2.e
 Quant Time: Jul 31 12:10:21 2025
 Quant Method : Z:\pestpcbsrv\HPCHEM1\ECD_0\methods\P0072325.M
 Quant Title : GC EXTRACTABLES
 QLast Update : Thu Jul 24 04:54:06 2025
 Response via : Initial Calibration
 Integrator: ChemStation

Volume Inj. : 2 µl
 Signal #1 Phase : ZB-MR1 Signal #2 Phase: ZB-MR2
 Signal #1 Info : 30Mx0.32mmx 0.50µ Signal #2 Info : 30M x 0.32mm x 0.25µm

Compound	RT#1	RT#2	Resp#1	Resp#2	ng/ml	ng/ml

System Monitoring Compounds						
1) SA Tetrachlo...	3.669	3.661	137.6E6	81948195	16.917	16.491
2) SA Decachlor...	8.691	8.637	138.1E6	32661337	18.892	18.483

Target Compounds

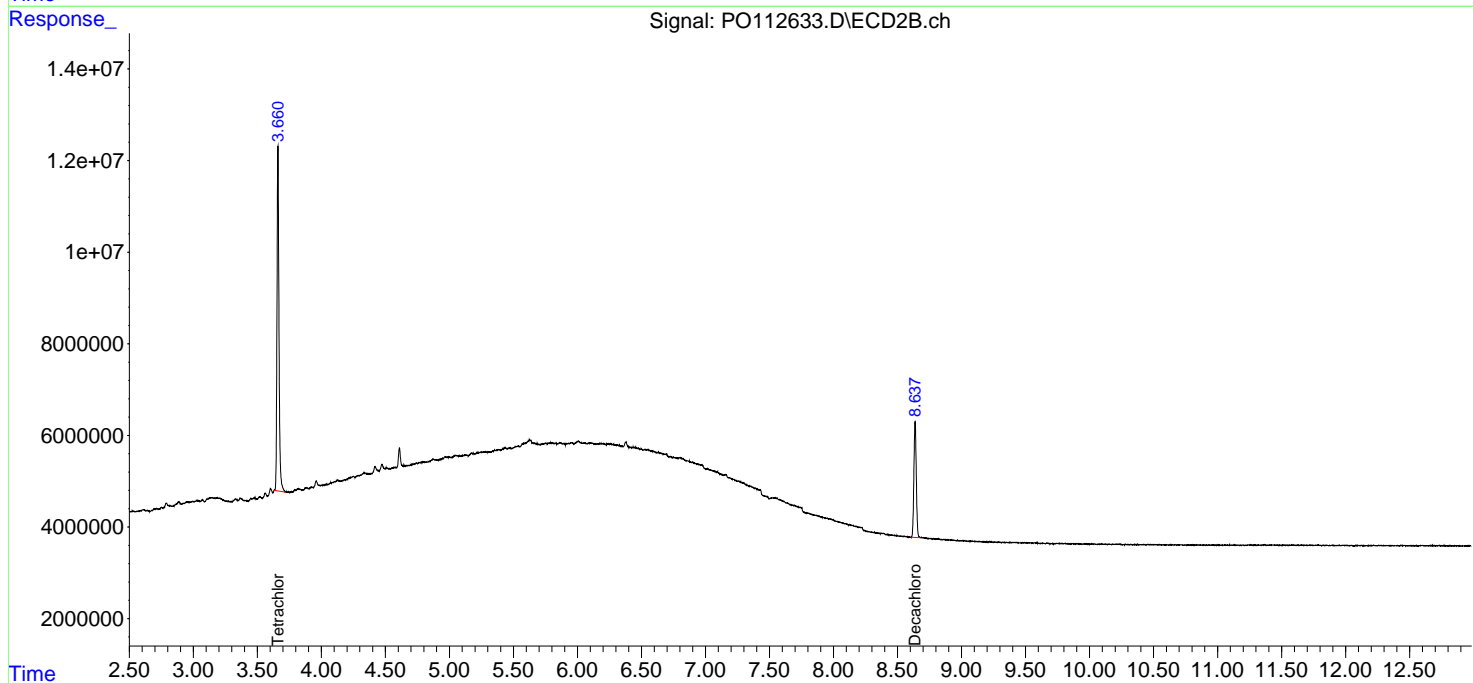
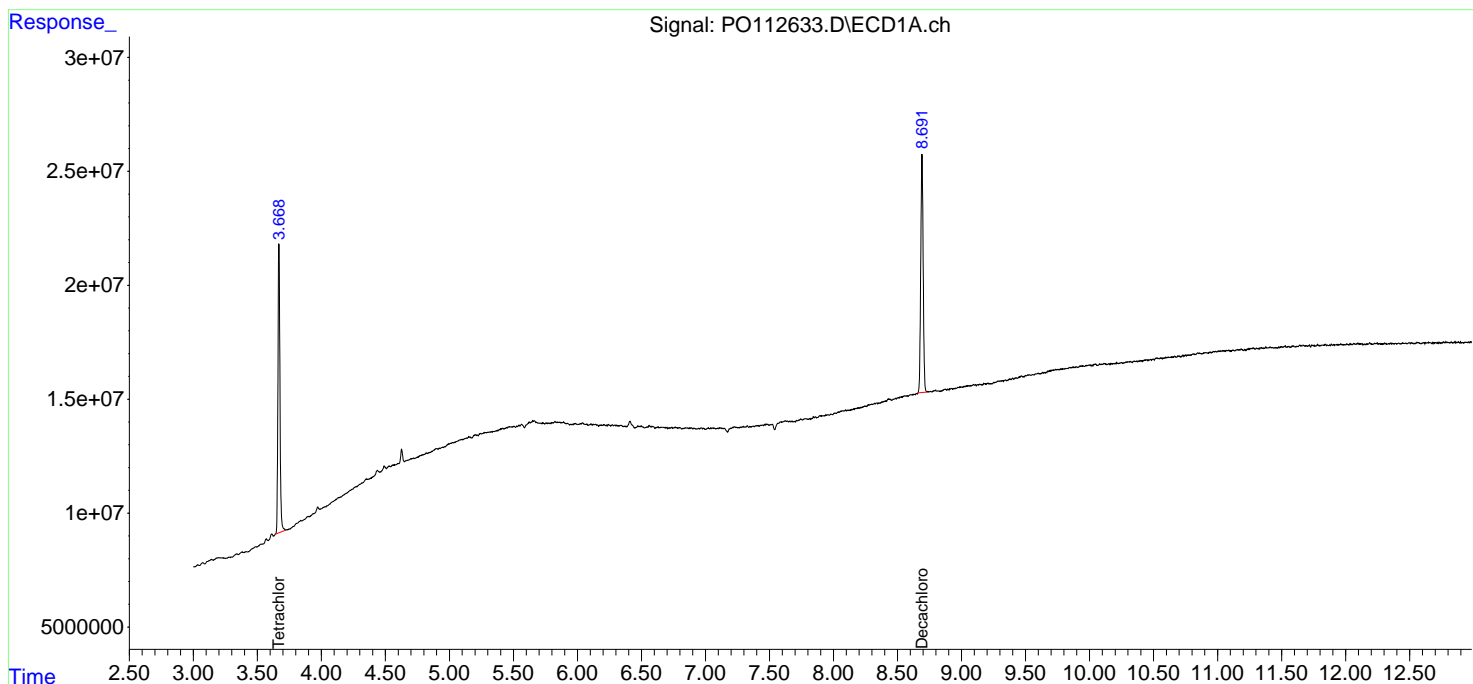
 (f)=RT Delta > 1/2 Window (#)=Amounts differ by > 25% (m)=manual int.

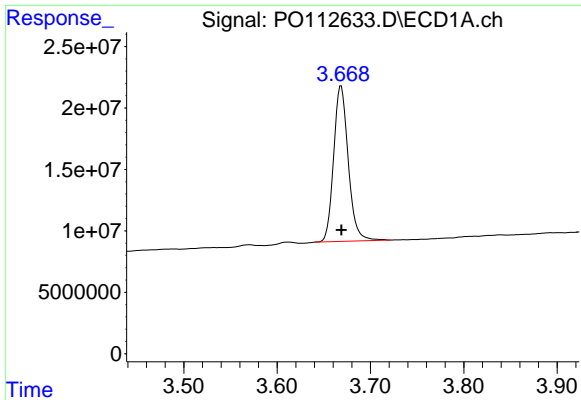
Data Path : Z:\pestpcbsrv\HPCHEM1\ECD_0\Data\P0073125\
 Data File : P0112633.D
 Signal(s) : Signal #1: ECD1A.ch Signal #2: ECD2B.ch
 Acq On : 31 Jul 2025 10:09
 Operator : YP/AJ
 Sample : I.BLK
 Misc :
 ALS Vial : 2 Sample Multiplier: 1

Instrument :
 ECD_0
 ClientSampleId :
 I.BLK

Integration File signal 1: autoint1.e
 Integration File signal 2: autoint2.e
 Quant Time: Jul 31 12:10:21 2025
 Quant Method : Z:\pestpcbsrv\HPCHEM1\ECD_0\methods\P0072325.M
 Quant Title : GC EXTRACTABLES
 QLast Update : Thu Jul 24 04:54:06 2025
 Response via : Initial Calibration
 Integrator: ChemStation

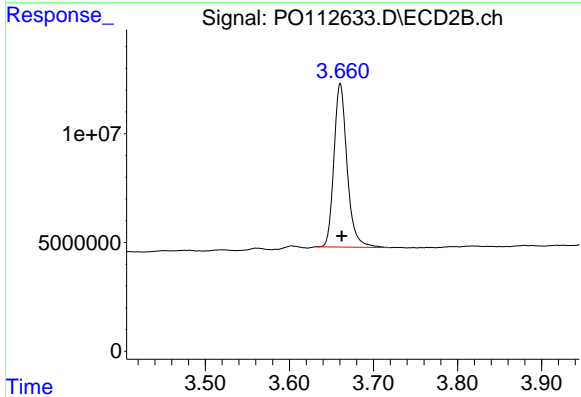
Volume Inj. : 2 µl
 Signal #1 Phase : ZB-MR1 Signal #2 Phase: ZB-MR2
 Signal #1 Info : 30Mx0.32mmx 0.50µ Signal #2 Info : 30M x 0.32mm x 0.25µm



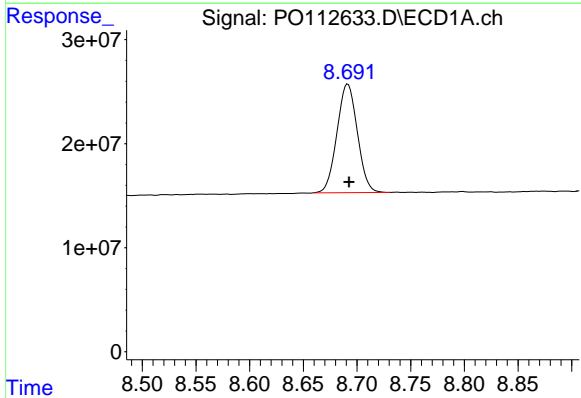


#1 Tetrachloro-m-xylene
 R.T.: 3.669 min
 Delta R.T.: 0.000 min
 Response: 137562298
 Conc: 16.92 ng/ml

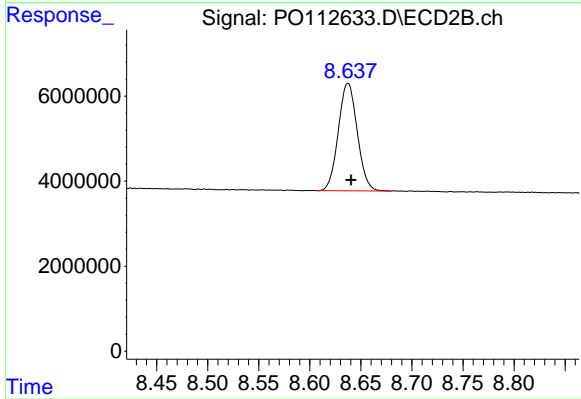
Instrument :
 ECD_O
 ClientSampleId :
 I.BLK



#1 Tetrachloro-m-xylene
 R.T.: 3.661 min
 Delta R.T.: -0.002 min
 Response: 81948195
 Conc: 16.49 ng/ml



#2 Decachlorobiphenyl
 R.T.: 8.691 min
 Delta R.T.: -0.001 min
 Response: 138133766
 Conc: 18.89 ng/ml



#2 Decachlorobiphenyl
 R.T.: 8.637 min
 Delta R.T.: -0.003 min
 Response: 32661337
 Conc: 18.48 ng/ml