

Data Path : Z:\pestpcbsrv\HPCHEM1\ECD\_0\Data\P0073125\  
 Data File : PO112634.D  
 Signal(s) : Signal #1: ECD1A.ch Signal #2: ECD2B.ch  
 Acq On : 31 Jul 2025 10:28  
 Operator : YP/AJ  
 Sample : DDT ANALOG  
 Misc :  
 ALS Vial : 7 Sample Multiplier: 1

Instrument :  
 ECD\_0  
 ClientSampleId :  
 DDT ANALOG

Integration File signal 1: autoint1.e  
 Integration File signal 2: autoint2.e  
 Quant Time: Jul 31 12:11:01 2025  
 Quant Method : Z:\pestpcbsrv\HPCHEM1\ECD\_0\methods\P0072325.M  
 Quant Title : GC EXTRACTABLES  
 QLast Update : Thu Jul 24 04:54:06 2025  
 Response via : Initial Calibration  
 Integrator: ChemStation

Volume Inj. : 2 µl  
 Signal #1 Phase : ZB-MR1 Signal #2 Phase: ZB-MR2  
 Signal #1 Info : 30Mx0.32mmx 0.50µ Signal #2 Info : 30M x 0.32mm x 0.25µm

Compound	RT#1	RT#2	Resp#1	Resp#2	ng/ml	ng/ml
-----						
System Monitoring Compounds						
Target Compounds						
30) L6 AR-1254-5	6.758	6.723	3833.6E6	1804.1E6	5416.003	5401.181
-----						

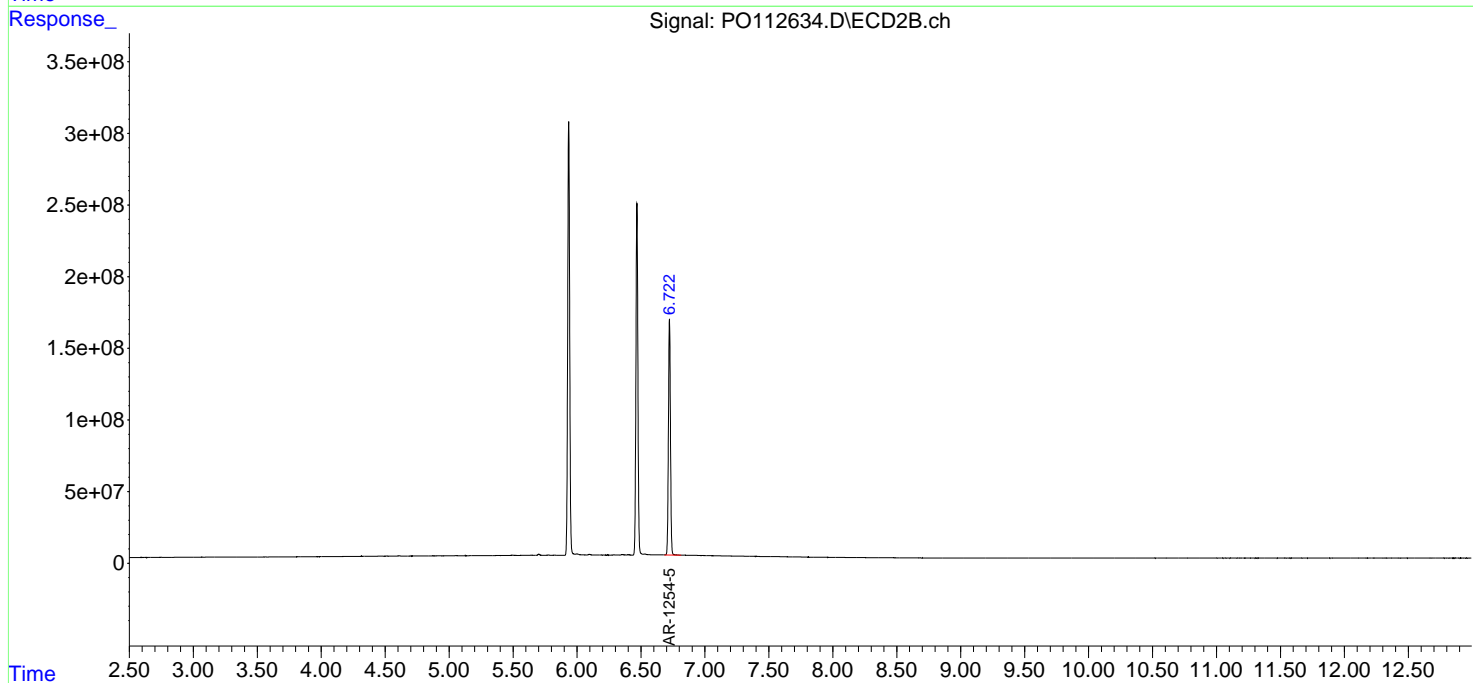
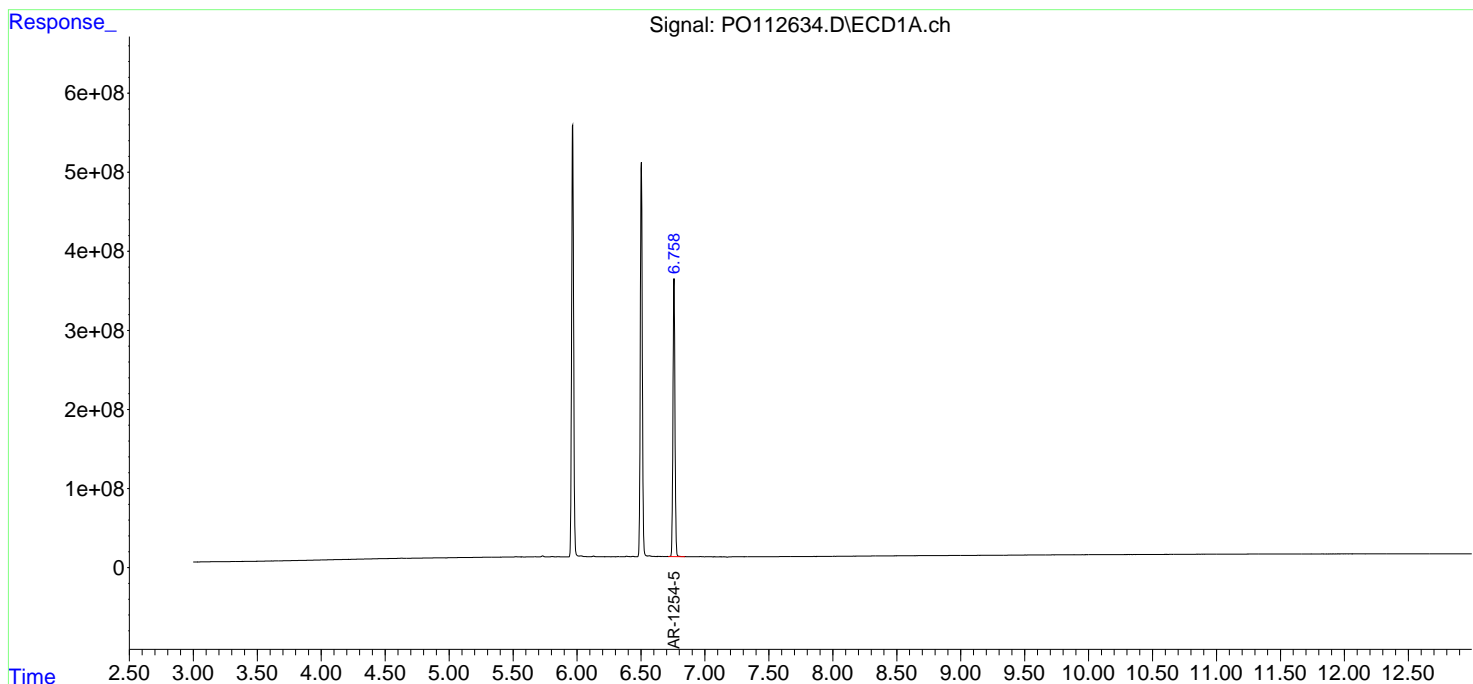
(f)=RT Delta > 1/2 Window (#)=Amounts differ by > 25% (m)=manual int.

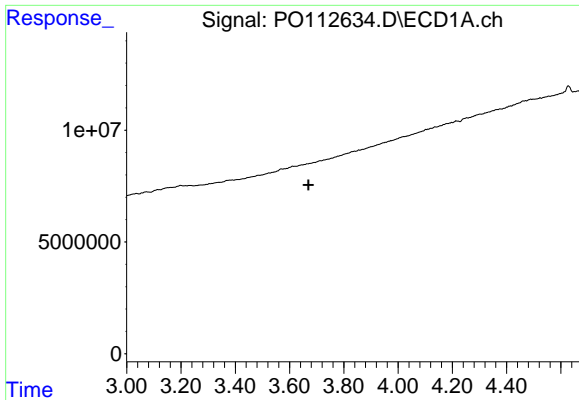
Data Path : Z:\pestpcbsrv\HPCHEM1\ECD\_0\Data\P0073125\  
 Data File : P0112634.D  
 Signal(s) : Signal #1: ECD1A.ch Signal #2: ECD2B.ch  
 Acq On : 31 Jul 2025 10:28  
 Operator : YP/AJ  
 Sample : DDT ANALOG  
 Misc :  
 ALS Vial : 7 Sample Multiplier: 1

Instrument :  
 ECD\_0  
 ClientSampleId :  
 DDT ANALOG

Integration File signal 1: autoint1.e  
 Integration File signal 2: autoint2.e  
 Quant Time: Jul 31 12:11:01 2025  
 Quant Method : Z:\pestpcbsrv\HPCHEM1\ECD\_0\methods\P0072325.M  
 Quant Title : GC EXTRACTABLES  
 QLast Update : Thu Jul 24 04:54:06 2025  
 Response via : Initial Calibration  
 Integrator: ChemStation

Volume Inj. : 2 µl  
 Signal #1 Phase : ZB-MR1 Signal #2 Phase: ZB-MR2  
 Signal #1 Info : 30Mx0.32mmx 0.50µ Signal #2 Info : 30M x 0.32mm x 0.25µm

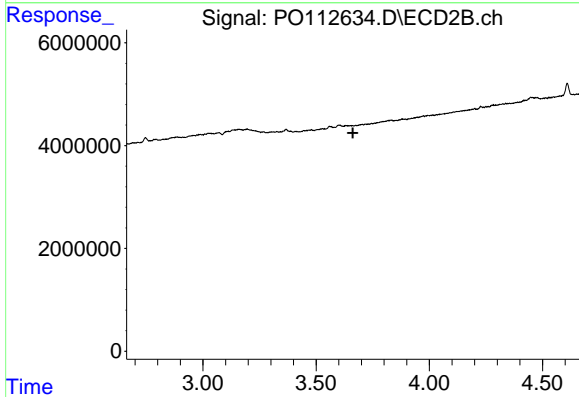




#1 Tetrachloro-m-xylene

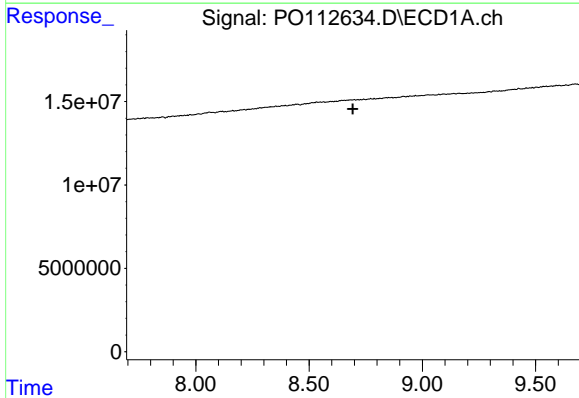
R.T.: 0.000 min  
 Exp R.T. : 3.669 min  
 Response: 0  
 Conc: N.D.

Instrument :  
 ECD\_O  
 ClientSampleId :  
 DDT ANALOG



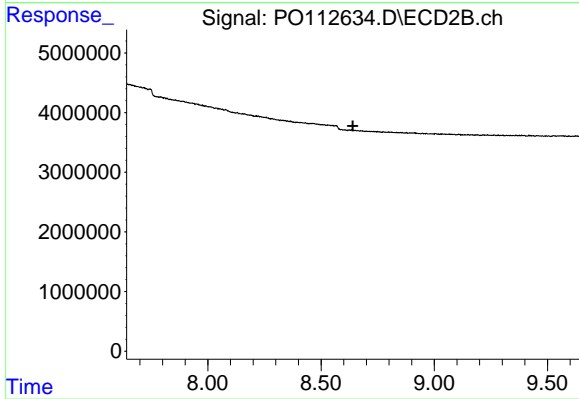
#1 Tetrachloro-m-xylene

R.T.: 0.000 min  
 Exp R.T. : 3.662 min  
 Response: 0  
 Conc: N.D.



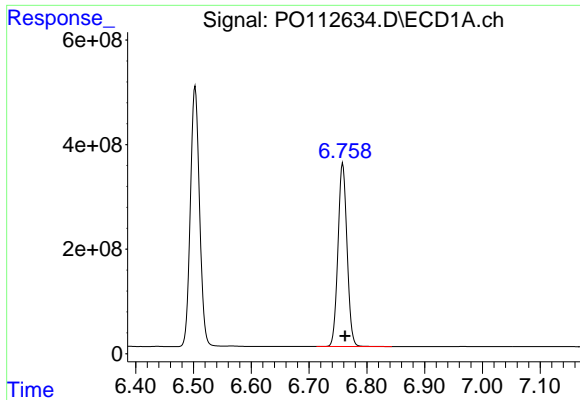
#2 Decachlorobiphenyl

R.T.: 0.000 min  
 Exp R.T. : 8.693 min  
 Response: 0  
 Conc: N.D.



#2 Decachlorobiphenyl

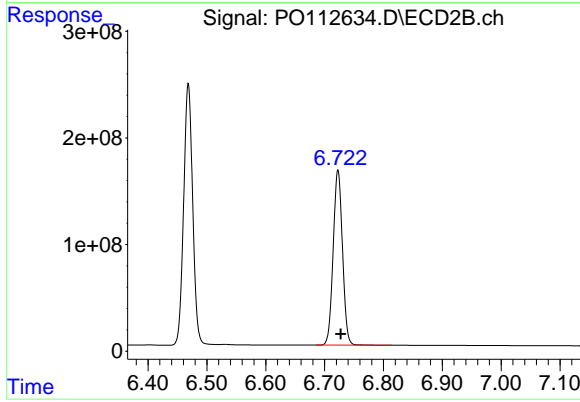
R.T.: 0.000 min  
 Exp R.T. : 8.640 min  
 Response: 0  
 Conc: N.D.



#30 AR-1254-5

R.T.: 6.758 min  
Delta R.T.: -0.004 min  
Response: 3833577917  
Conc: 5416.00 ng/m

Instrument :  
ECD\_O  
ClientSampleId :  
DDT ANALOG



#30 AR-1254-5

R.T.: 6.723 min  
Delta R.T.: -0.004 min  
Response: 1804100658  
Conc: 5401.18 ng/ml