

Data Path : Z:\pestpcbsrv\HPCHEM1\ECD\_0\Data\P0073125\  
 Data File : P0112635.D  
 Signal(s) : Signal #1: ECD1A.ch Signal #2: ECD2B.ch  
 Acq On : 31 Jul 2025 10:46  
 Operator : YP/AJ  
 Sample : Q2722-01RE 10X  
 Misc :  
 ALS Vial : 8 Sample Multiplier: 1

**Instrument :**  
 ECD\_0  
**ClientSampleId :**  
 LAW-25-0107

**Manual Integrations**  
**APPROVED**

Reviewed By :Yogesh Patel 08/01/2025  
 Supervised By :mohammad ahmed 08/01/2025

Integration File signal 1: autoint1.e  
 Integration File signal 2: autoint2.e  
 Quant Time: Jul 31 12:11:51 2025  
 Quant Method : Z:\pestpcbsrv\HPCHEM1\ECD\_0\methods\P0072325.M  
 Quant Title : GC EXTRACTABLES  
 QLast Update : Thu Jul 24 04:54:06 2025  
 Response via : Initial Calibration  
 Integrator: ChemStation

Volume Inj. : 2 µl  
 Signal #1 Phase : ZB-MR1 Signal #2 Phase: ZB-MR2  
 Signal #1 Info : 30Mx0.32mmx 0.50µ Signal #2 Info : 30M x 0.32mm x 0.25µm

Compound	RT#1	RT#2	Resp#1	Resp#2	ng/ml	ng/ml
-----						
System Monitoring Compounds						
1) SA Tetrachlo...	3.668	3.661	8246993	5927941	1.014m	1.193m
2) SA Decachlor...	8.713	8.657	35898559	8538329	4.910m	4.832m

Target Compounds

(f)=RT Delta > 1/2 Window (#)=Amounts differ by > 25% (m)=manual int.

Data Path : Z:\pestpcbsrv\HPCHEM1\ECD\_O\Data\P0073125\  
 Data File : P0112635.D  
 Signal(s) : Signal #1: ECD1A.ch Signal #2: ECD2B.ch  
 Acq On : 31 Jul 2025 10:46  
 Operator : YP/AJ  
 Sample : Q2722-01RE 10X  
 Misc :  
 ALS Vial : 8 Sample Multiplier: 1

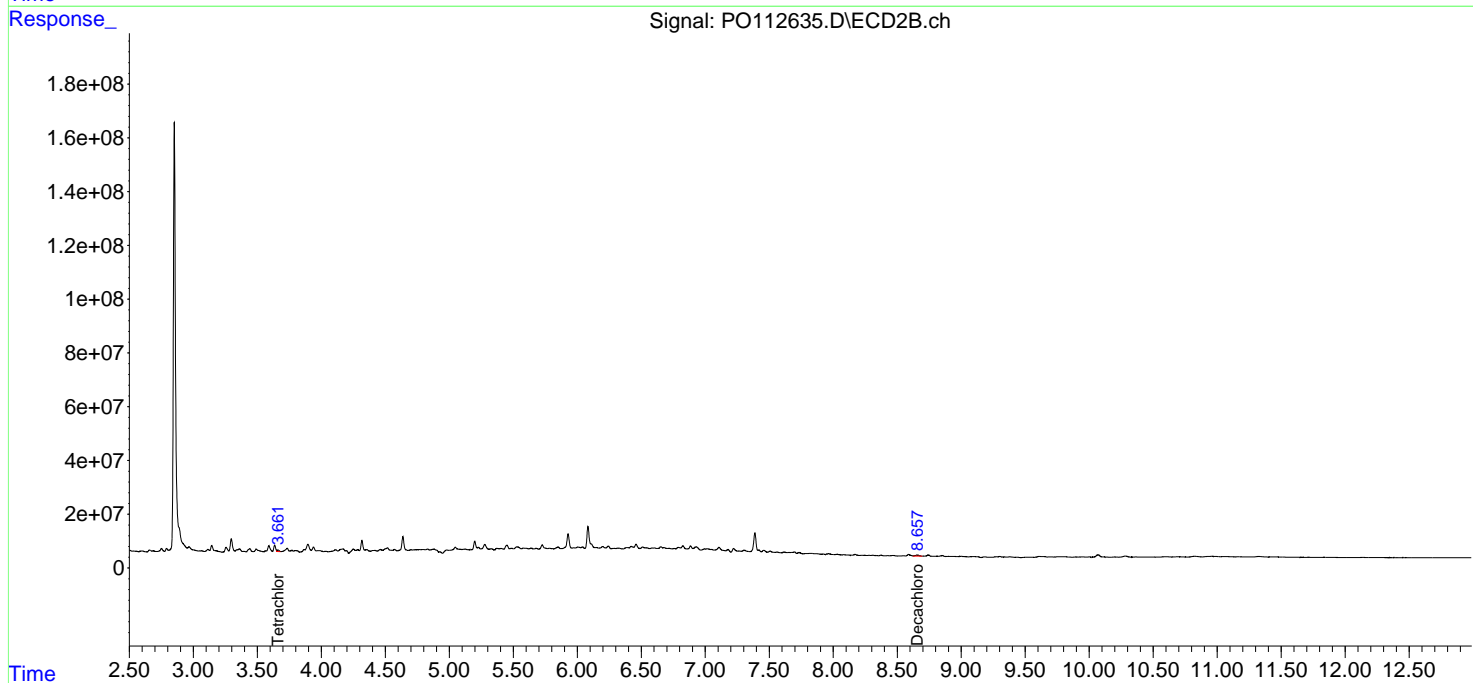
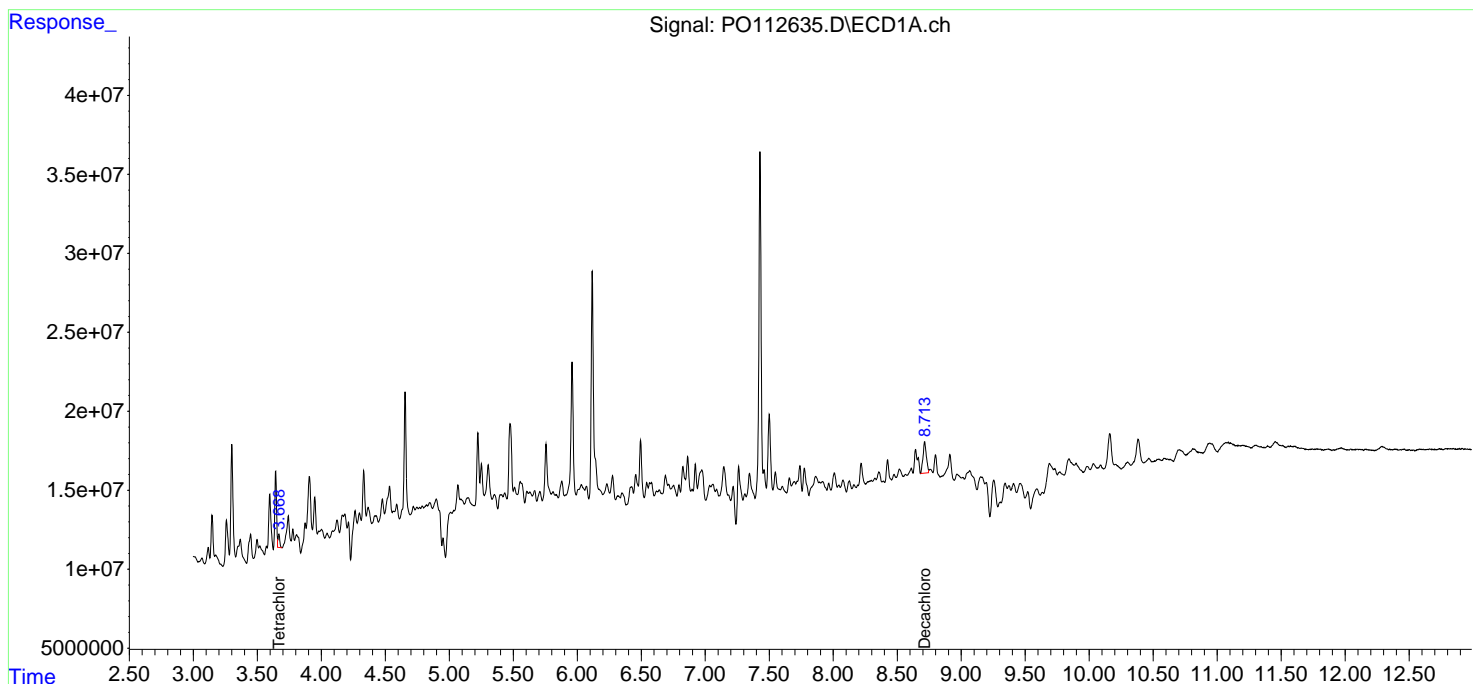
Instrument :  
 ECD\_O  
 ClientSampleId :  
 LAW-25-0107

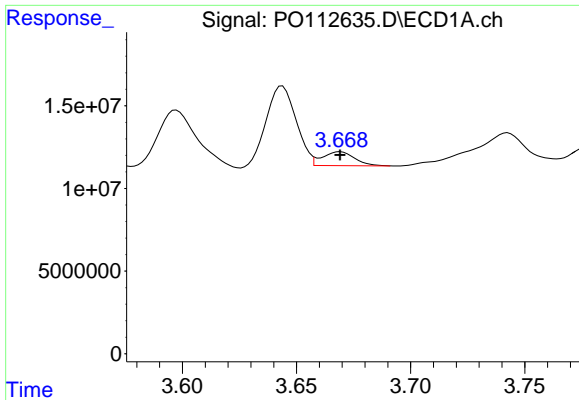
Manual Integrations  
 APPROVED

Reviewed By :Yogesh Patel 08/01/2025  
 Supervised By :mohammad ahmed 08/01/2025

Integration File signal 1: autoint1.e  
 Integration File signal 2: autoint2.e  
 Quant Time: Jul 31 12:11:51 2025  
 Quant Method : Z:\pestpcbsrv\HPCHEM1\ECD\_O\methods\P0072325.M  
 Quant Title : GC EXTRACTABLES  
 QLast Update : Thu Jul 24 04:54:06 2025  
 Response via : Initial Calibration  
 Integrator: ChemStation

Volume Inj. : 2 µl  
 Signal #1 Phase : ZB-MR1 Signal #2 Phase: ZB-MR2  
 Signal #1 Info : 30Mx0.32mmx 0.50µm Signal #2 Info : 30M x 0.32mm x 0.25µm



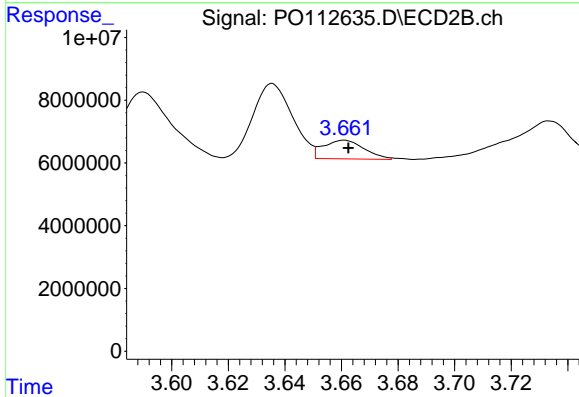


#1 Tetrachloro-m-xylene

R.T.: 3.668 min  
 Delta R.T.: 0.000 min  
 Response: 8246993  
 Conc: 1.01 ng/ml

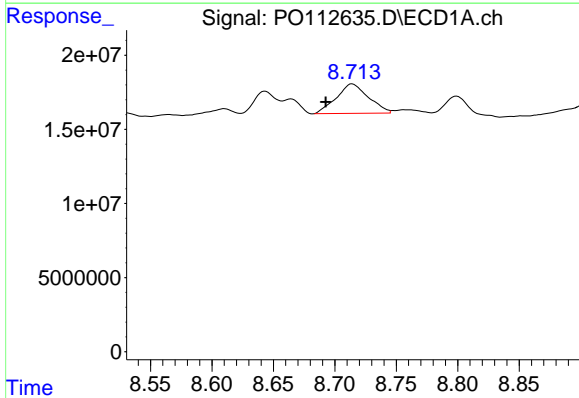
Instrument : ECD\_O  
 ClientSampleId : LAW-25-0107

**Manual Integrations**  
**APPROVED**  
 Reviewed By :Yogesh Patel 08/01/2025  
 Supervised By :mohammad ahmed 08/01/2025



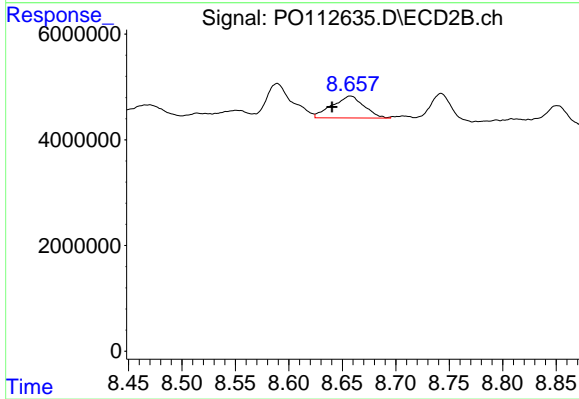
#1 Tetrachloro-m-xylene

R.T.: 3.661 min  
 Delta R.T.: -0.002 min  
 Response: 5927941  
 Conc: 1.19 ng/ml m



#2 Decachlorobiphenyl

R.T.: 8.713 min  
 Delta R.T.: 0.021 min  
 Response: 35898559  
 Conc: 4.91 ng/ml m



#2 Decachlorobiphenyl

R.T.: 8.657 min  
 Delta R.T.: 0.017 min  
 Response: 8538329  
 Conc: 4.83 ng/ml m