

Data Path : Z:\pestpcbsrv\HPCHEM1\ECD_0\Data\P0073125\
 Data File : P0112636.D
 Signal(s) : Signal #1: ECD1A.ch Signal #2: ECD2B.ch
 Acq On : 31 Jul 2025 11:05
 Operator : YP/AJ
 Sample : Q2722-03 10X
 Misc :
 ALS Vial : 9 Sample Multiplier: 1

Instrument :
 ECD_0
ClientSampleId :
 LAW-25-0108

Manual Integrations
APPROVED

Reviewed By :Yogesh Patel 08/01/2025
 Supervised By :mohammad ahmed 08/01/2025

Integration File signal 1: autoint1.e
 Integration File signal 2: autoint2.e
 Quant Time: Jul 31 12:12:36 2025
 Quant Method : Z:\pestpcbsrv\HPCHEM1\ECD_0\methods\P0072325.M
 Quant Title : GC EXTRACTABLES
 QLast Update : Thu Jul 24 04:54:06 2025
 Response via : Initial Calibration
 Integrator: ChemStation

Volume Inj. : 2 µl
 Signal #1 Phase : ZB-MR1 Signal #2 Phase: ZB-MR2
 Signal #1 Info : 30Mx0.32mmx 0.50µ Signal #2 Info : 30M x 0.32mm x 0.25µm

Compound	RT#1	RT#2	Resp#1	Resp#2	ng/ml	ng/ml

System Monitoring Compounds						
1) SA Tetrachlo...	3.668	3.660	6936714	4680397	0.853m	0.942m
2) SA Decachlor...	8.697	8.644	7407632	2341119	1.013m	1.325m#

Target Compounds

(f)=RT Delta > 1/2 Window (#)=Amounts differ by > 25% (m)=manual int.

Data Path : Z:\pestpcbsrv\HPCHEM1\ECD_O\Data\PO073125\
 Data File : PO112636.D
 Signal(s) : Signal #1: ECD1A.ch Signal #2: ECD2B.ch
 Acq On : 31 Jul 2025 11:05
 Operator : YP/AJ
 Sample : Q2722-03 10X
 Misc :
 ALS Vial : 9 Sample Multiplier: 1

Instrument :

ECD_O

ClientSampleId :

LAW-25-0108

Manual Integrations

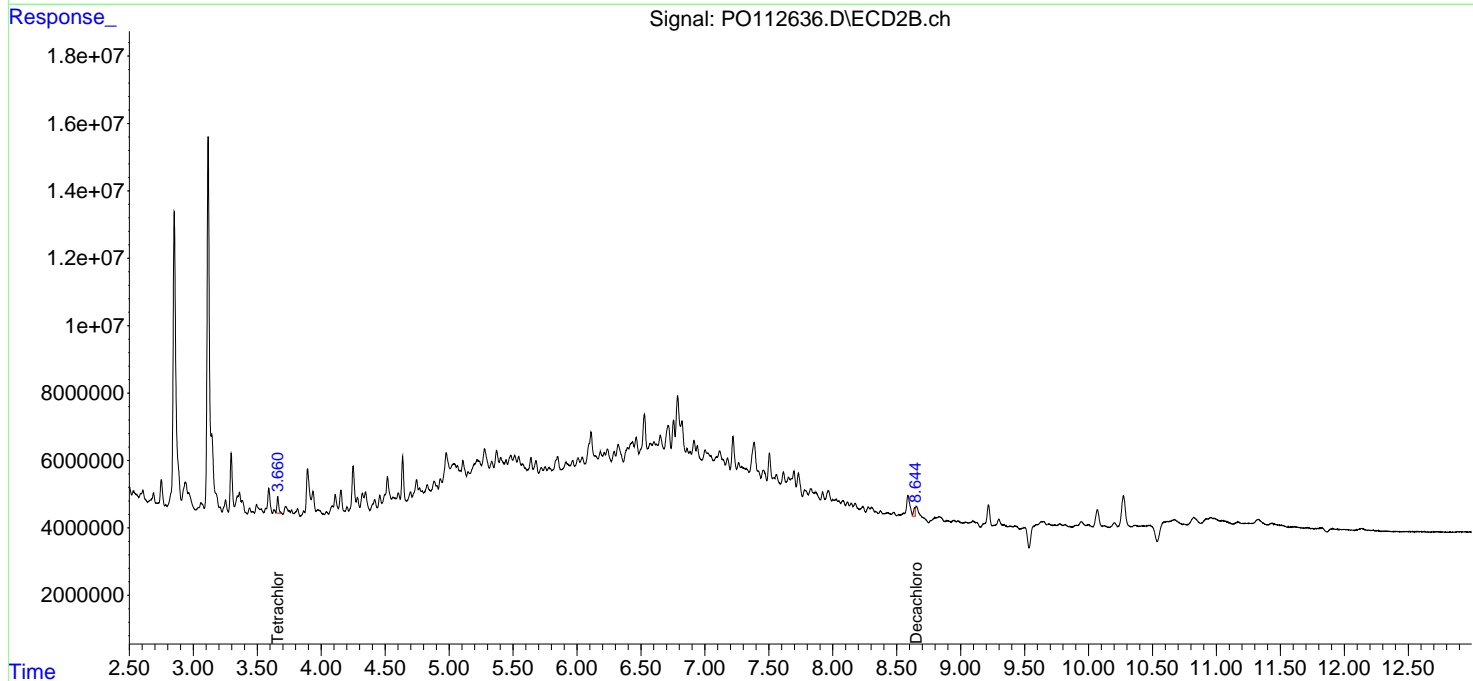
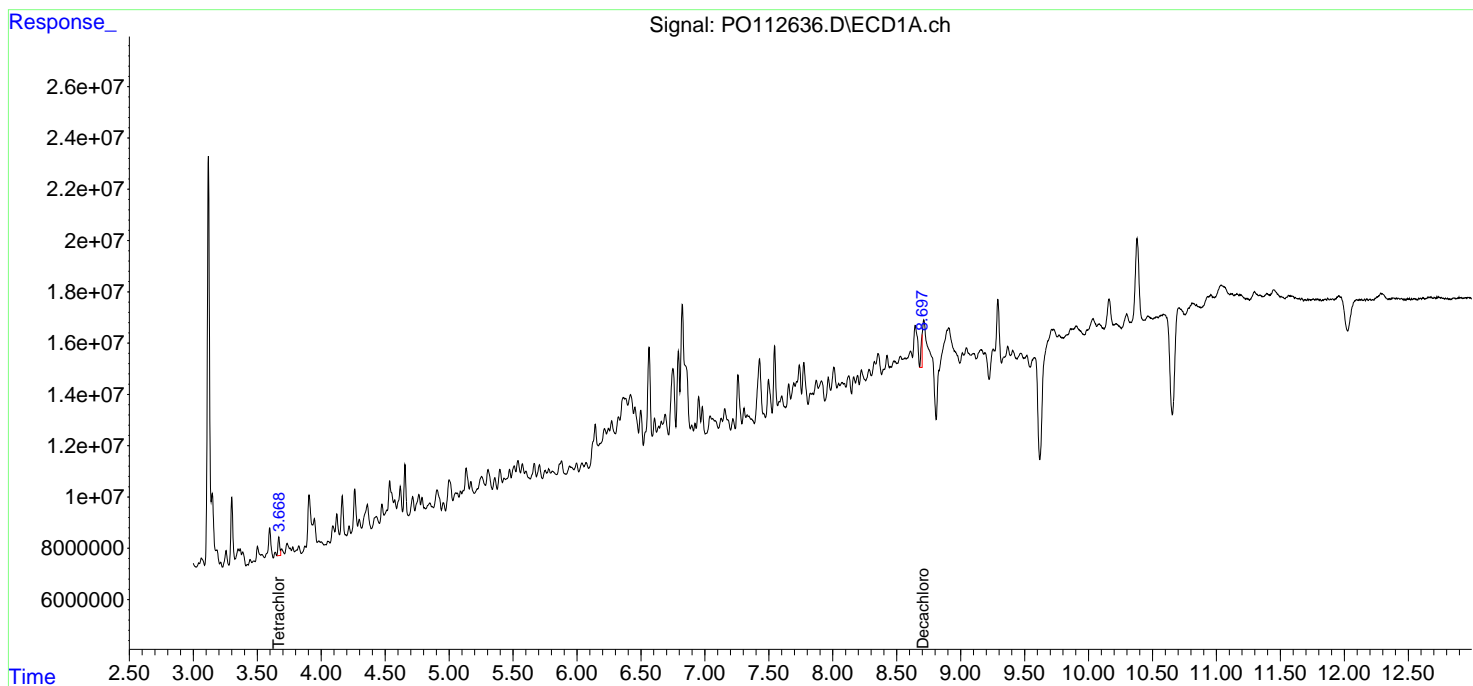
APPROVED

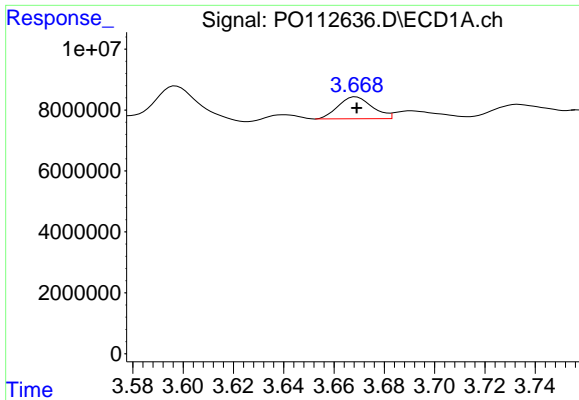
Reviewed By :Yogesh Patel 08/01/2025

Supervised By :mohammad ahmed 08/01/2025

Integration File signal 1: autoint1.e
 Integration File signal 2: autoint2.e
 Quant Time: Jul 31 12:12:36 2025
 Quant Method : Z:\pestpcbsrv\HPCHEM1\ECD_O\methods\PO072325.M
 Quant Title : GC EXTRACTABLES
 QLast Update : Thu Jul 24 04:54:06 2025
 Response via : Initial Calibration
 Integrator: ChemStation

Volume Inj. : 2 µl
 Signal #1 Phase : ZB-MR1 Signal #2 Phase: ZB-MR2
 Signal #1 Info : 30Mx0.32mmx 0.50µ Signal #2 Info : 30M x 0.32mm x 0.25µm

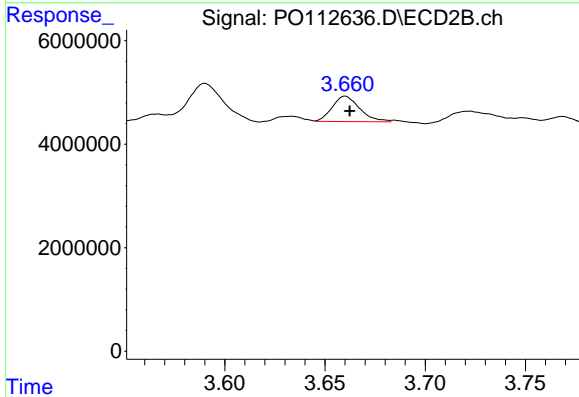




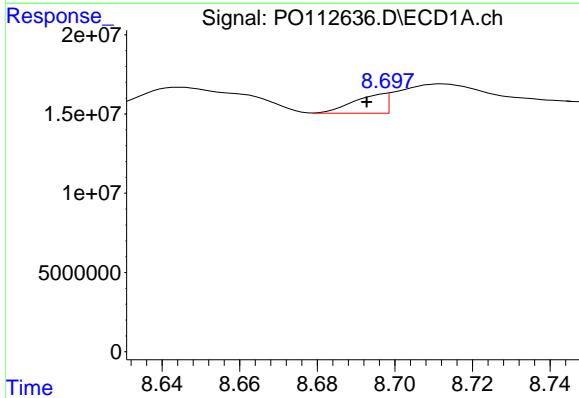
#1 Tetrachloro-m-xylene
 R.T.: 3.668 min
 Delta R.T.: -0.001 min
 Response: 6936714
 Conc: 0.85 ng/ml

Instrument : ECD_O
 ClientSampleId : LAW-25-0108

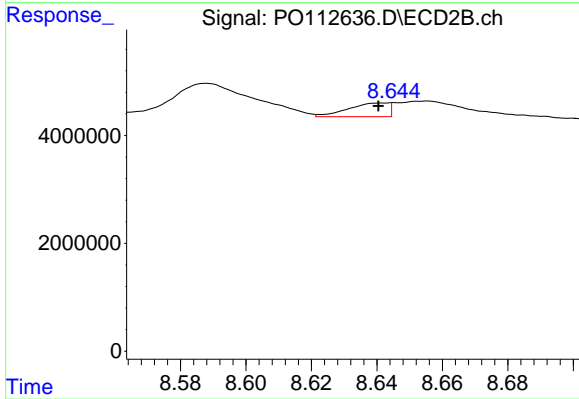
Manual Integrations
APPROVED
 Reviewed By :Yogesh Patel 08/01/2025
 Supervised By :mohammad ahmed 08/01/2025



#1 Tetrachloro-m-xylene
 R.T.: 3.660 min
 Delta R.T.: -0.003 min
 Response: 4680397
 Conc: 0.94 ng/ml m



#2 Decachlorobiphenyl
 R.T.: 8.697 min
 Delta R.T.: 0.005 min
 Response: 7407632
 Conc: 1.01 ng/ml m



#2 Decachlorobiphenyl
 R.T.: 8.644 min
 Delta R.T.: 0.004 min
 Response: 2341119
 Conc: 1.32 ng/ml m