

Data Path : Z:\pestpcbsrv\HPCHEM1\ECD\_0\Data\P0073125\  
 Data File : PO112638.D  
 Signal(s) : Signal #1: ECD1A.ch Signal #2: ECD2B.ch  
 Acq On : 31 Jul 2025 12:00  
 Operator : YP/AJ  
 Sample : Q2690-01  
 Misc :  
 ALS Vial : 11 Sample Multiplier: 1

**Instrument :**  
 ECD\_0  
**ClientSampleId :**  
 723-A

**Manual Integrations**  
**APPROVED**  
 Reviewed By :Yogesh Patel 08/01/2025  
 Supervised By :mohammad ahmed 08/01/2025

Integration File signal 1: autoint1.e  
 Integration File signal 2: autoint2.e  
 Quant Time: Jul 31 12:28:13 2025  
 Quant Method : Z:\pestpcbsrv\HPCHEM1\ECD\_0\methods\P0072325.M  
 Quant Title : GC EXTRACTABLES  
 QLast Update : Thu Jul 24 04:54:06 2025  
 Response via : Initial Calibration  
 Integrator: ChemStation

Volume Inj. : 2 µl  
 Signal #1 Phase : ZB-MR1 Signal #2 Phase: ZB-MR2  
 Signal #1 Info : 30Mx0.32mmx 0.50µ Signal #2 Info : 30M x 0.32mm x 0.25µm

Compound	RT#1	RT#2	Resp#1	Resp#2	ng/ml	ng/ml
-----						
System Monitoring Compounds						
1) SA Tetrachlo...	3.669	3.661	176.1E6	111.8E6	21.653m	22.489m
2) SA Decachlor...	8.693	8.638	121.3E6	32159211	16.587	18.199
Target Compounds						
21) L5 AR-1248-1	4.755	4.736	532.9E6	345.1E6	2846.398	2840.184
22) L5 AR-1248-2	4.993	4.973	368.3E6	238.9E6	1443.576	1411.013
23) L5 AR-1248-3	5.208	5.014	696.8E6	305.0E6	2027.269	1716.995
24) L5 AR-1248-4	5.561	5.185	1992.2E6	451.6E6	3920.958	2167.368 #
25) L5 AR-1248-5	5.602	5.575	1693.3E6	1009.3E6	4843.777	4699.729
-----						

(f)=RT Delta > 1/2 Window (#)=Amounts differ by > 25% (m)=manual int.

Data Path : Z:\pestpcbsrv\HPCHEM1\ECD\_O\Data\P0073125\  
 Data File : P0112638.D  
 Signal(s) : Signal #1: ECD1A.ch Signal #2: ECD2B.ch  
 Acq On : 31 Jul 2025 12:00  
 Operator : YP/AJ  
 Sample : Q2690-01  
 Misc :  
 ALS Vial : 11 Sample Multiplier: 1

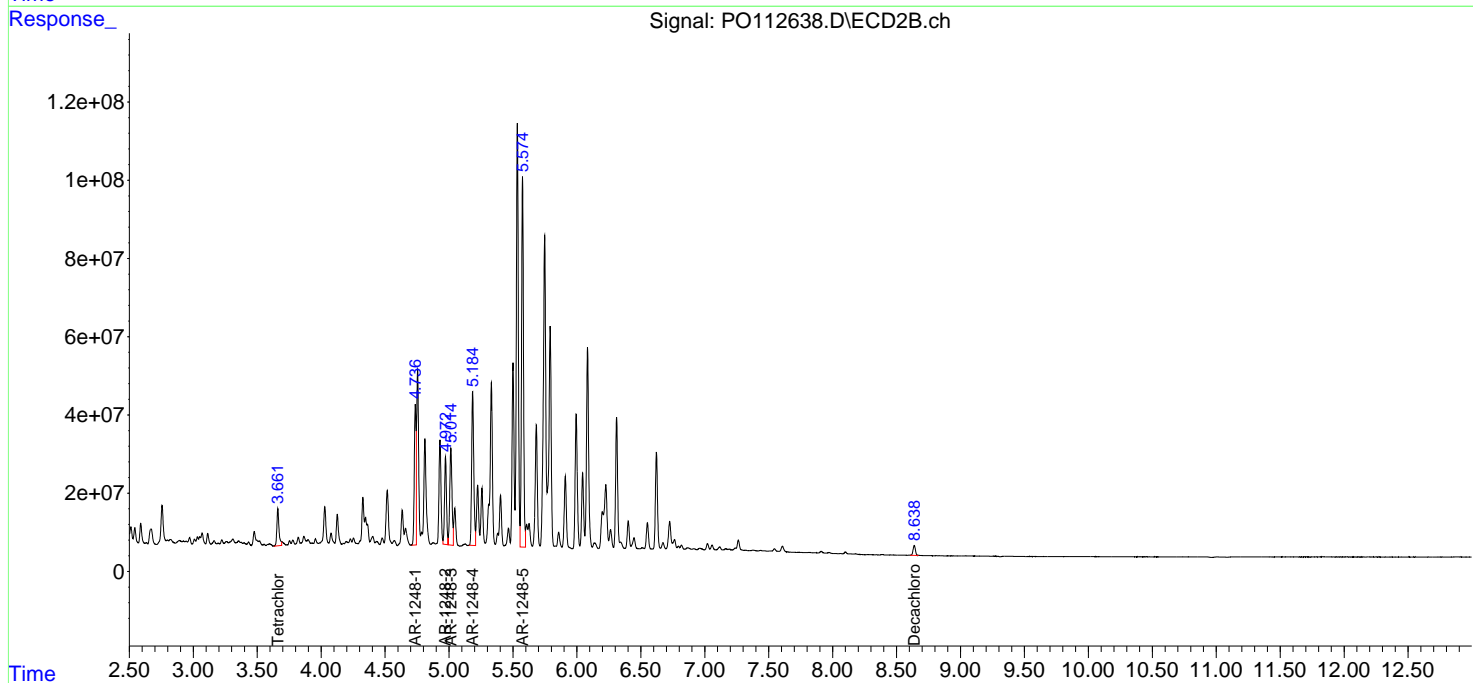
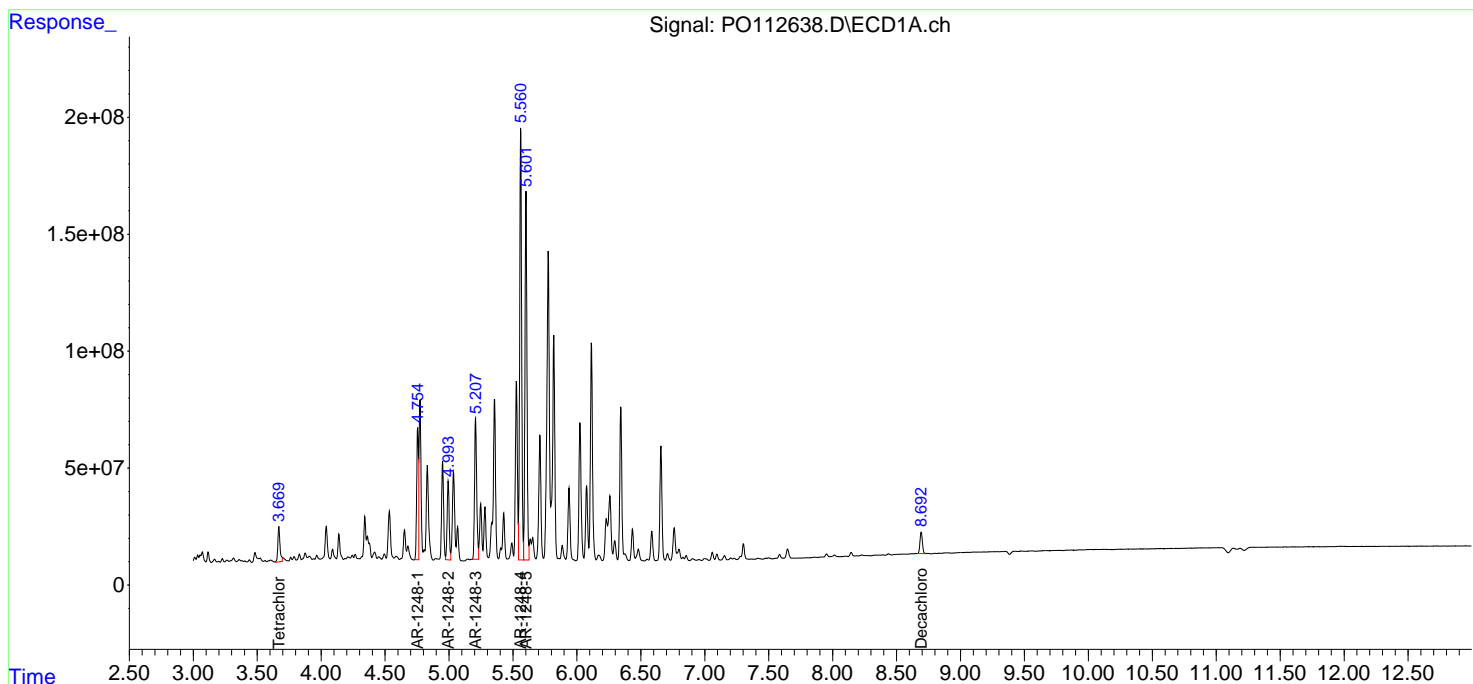
**Instrument :**  
 ECD\_O  
**ClientSampleId :**  
 723-A

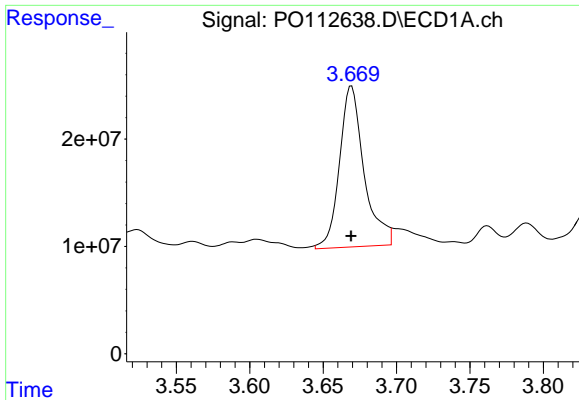
**Manual Integrations**  
**APPROVED**

Reviewed By :Yogesh Patel 08/01/2025  
 Supervised By :mohammad ahmed 08/01/2025

Integration File signal 1: autoint1.e  
 Integration File signal 2: autoint2.e  
 Quant Time: Jul 31 12:28:13 2025  
 Quant Method : Z:\pestpcbsrv\HPCHEM1\ECD\_O\methods\P0072325.M  
 Quant Title : GC EXTRACTABLES  
 QLast Update : Thu Jul 24 04:54:06 2025  
 Response via : Initial Calibration  
 Integrator: ChemStation

Volume Inj. : 2 µl  
 Signal #1 Phase : ZB-MR1 Signal #2 Phase: ZB-MR2  
 Signal #1 Info : 30Mx0.32mmx 0.50µ Signal #2 Info : 30M x 0.32mm x 0.25µm



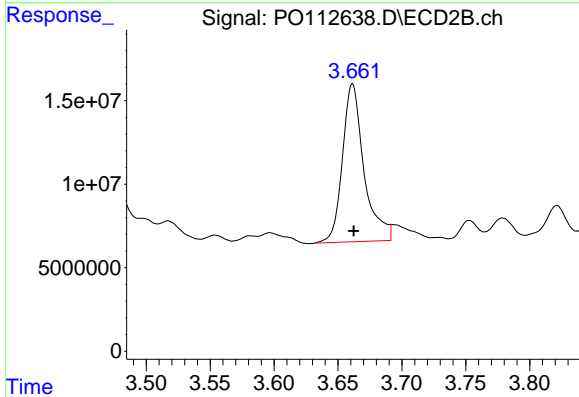


#1 Tetrachloro-m-xylene  
 R.T.: 3.669 min  
 Delta R.T.: 0.000 min  
 Response: 176069247  
 Conc: 21.65 ng/ml

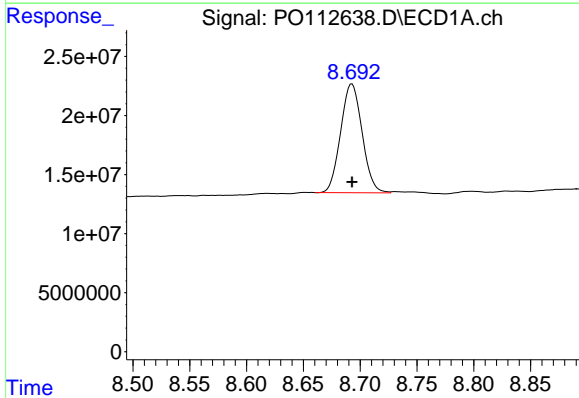
Instrument :  
 ECD\_O  
 ClientSampleId :  
 723-A

Manual Integrations  
 APPROVED

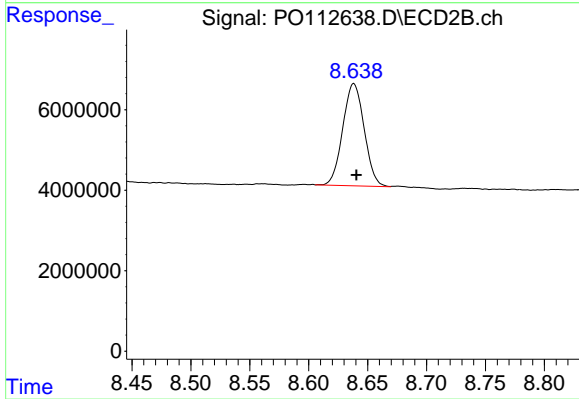
Reviewed By :Yogesh Patel 08/01/2025  
 Supervised By :mohammad ahmed 08/01/2025



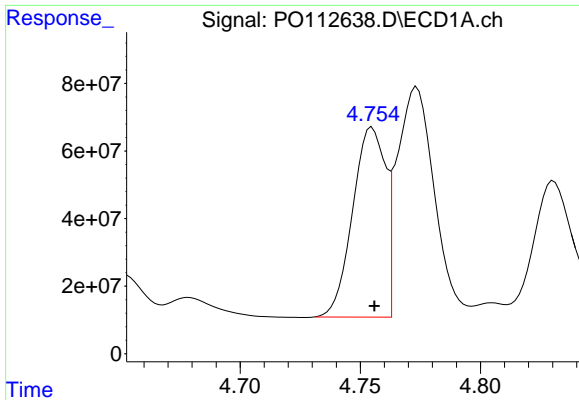
#1 Tetrachloro-m-xylene  
 R.T.: 3.661 min  
 Delta R.T.: -0.001 min  
 Response: 111753053  
 Conc: 22.49 ng/ml m



#2 Decachlorobiphenyl  
 R.T.: 8.693 min  
 Delta R.T.: 0.000 min  
 Response: 121279749  
 Conc: 16.59 ng/ml



#2 Decachlorobiphenyl  
 R.T.: 8.638 min  
 Delta R.T.: -0.002 min  
 Response: 32159211  
 Conc: 18.20 ng/ml



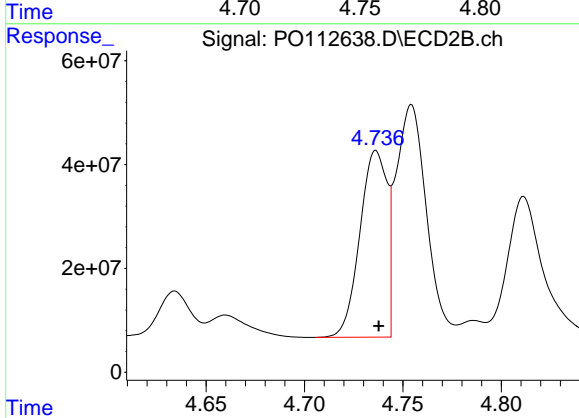
#21 AR-1248-1

R.T.: 4.755 min  
 Delta R.T.: 0.000 min  
 Response: 532870534  
 Conc: 2846.40 ng/ml

Instrument :  
 ECD\_O  
 ClientSampleId :  
 723-A

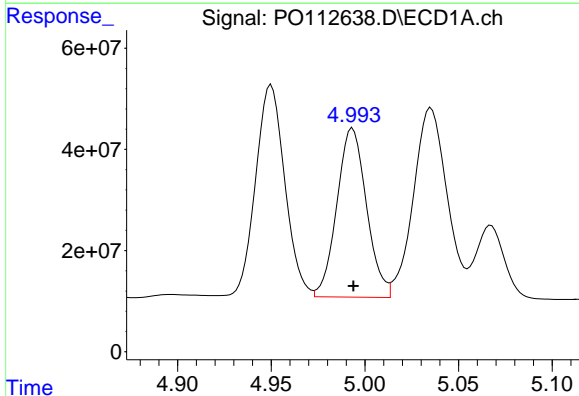
Manual Integrations  
 APPROVED

Reviewed By :Yogesh Patel 08/01/2025  
 Supervised By :mohammad ahmed 08/01/2025



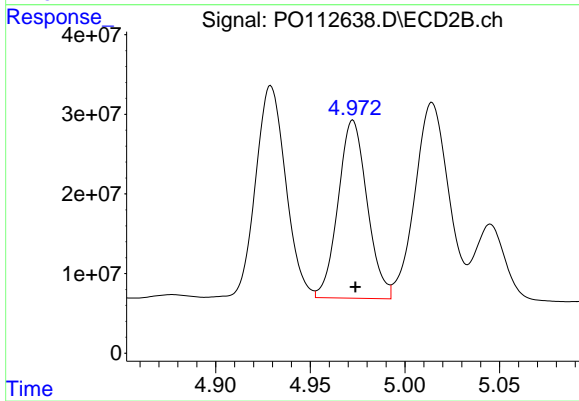
#21 AR-1248-1

R.T.: 4.736 min  
 Delta R.T.: -0.001 min  
 Response: 345108762  
 Conc: 2840.18 ng/ml



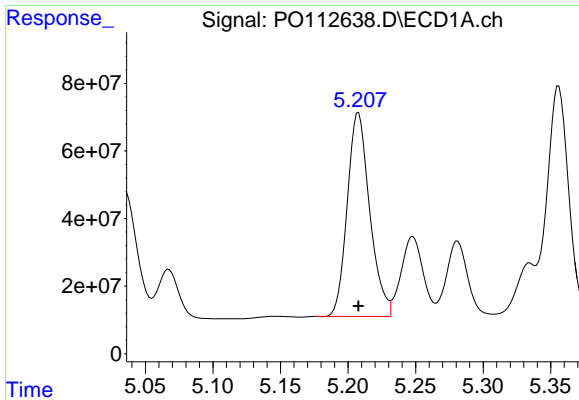
#22 AR-1248-2

R.T.: 4.993 min  
 Delta R.T.: 0.000 min  
 Response: 368273972  
 Conc: 1443.58 ng/ml



#22 AR-1248-2

R.T.: 4.973 min  
 Delta R.T.: -0.001 min  
 Response: 238855841  
 Conc: 1411.01 ng/ml



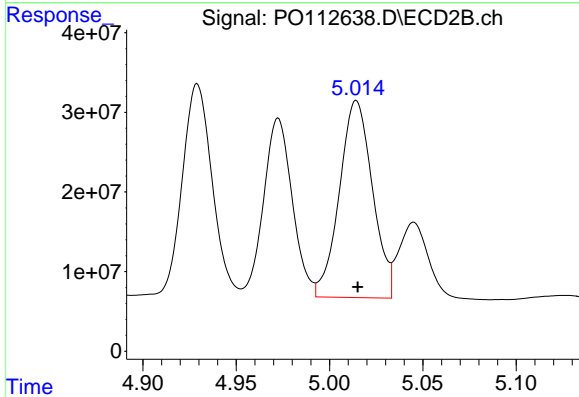
#23 AR-1248-3

R.T.: 5.208 min  
 Delta R.T.: 0.000 min  
 Response: 696774996  
 Conc: 2027.27 ng/ml

Instrument :  
 ECD\_O  
 ClientSampleId :  
 723-A

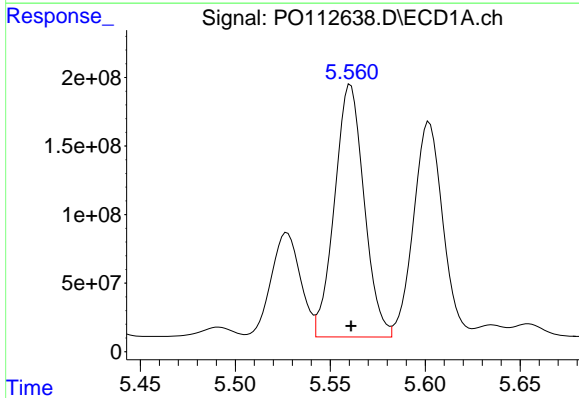
Manual Integrations  
 APPROVED

Reviewed By :Yogesh Patel 08/01/2025  
 Supervised By :mohammad ahmed 08/01/2025



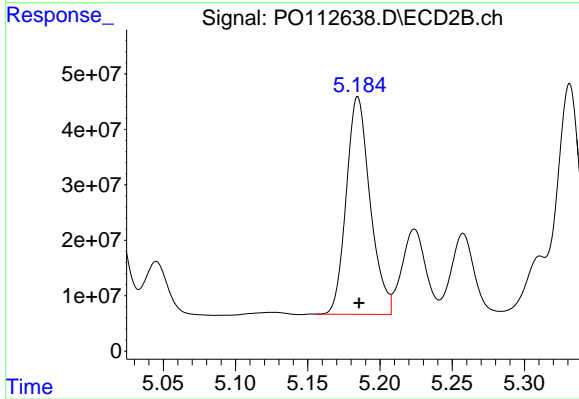
#23 AR-1248-3

R.T.: 5.014 min  
 Delta R.T.: 0.000 min  
 Response: 305019323  
 Conc: 1717.00 ng/ml



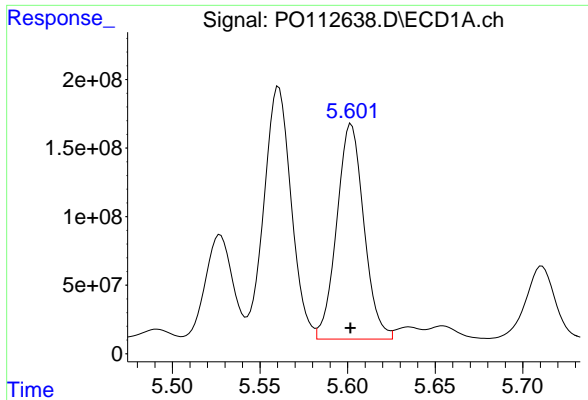
#24 AR-1248-4

R.T.: 5.561 min  
 Delta R.T.: 0.000 min  
 Response: 1992151582  
 Conc: 3920.96 ng/ml



#24 AR-1248-4

R.T.: 5.185 min  
 Delta R.T.: 0.000 min  
 Response: 451580980  
 Conc: 2167.37 ng/ml



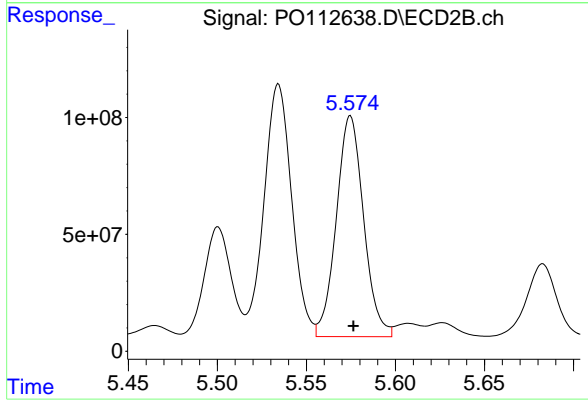
#25 AR-1248-5

R.T.: 5.602 min  
 Delta R.T.: 0.000 min  
 Response: 1693341417  
 Conc: 4843.78 ng/m

Instrument :  
 ECD\_O  
 ClientSampleId :  
 723-A

Manual Integrations  
 APPROVED

Reviewed By :Yogesh Patel 08/01/2025  
 Supervised By :mohammad ahmed 08/01/2025



#25 AR-1248-5

R.T.: 5.575 min  
 Delta R.T.: -0.002 min  
 Response: 1009337418  
 Conc: 4699.73 ng/ml