

Data Path : Z:\pestpcbsrv\HPCHEM1\ECD_0\Data\P0073125\
 Data File : PO112640.D
 Signal(s) : Signal #1: ECD1A.ch Signal #2: ECD2B.ch
 Acq On : 31 Jul 2025 13:32
 Operator : YP/AJ
 Sample : AR1660CCC500
 Misc :
 ALS Vial : 3 Sample Multiplier: 1

Instrument :
 ECD_0
 ClientSampleId :
 AR1660CCC500

Integration File signal 1: autoint1.e
 Integration File signal 2: autoint2.e
 Quant Time: Jul 31 23:06:55 2025
 Quant Method : Z:\pestpcbsrv\HPCHEM1\ECD_0\methods\P0072325.M
 Quant Title : GC EXTRACTABLES
 QLast Update : Thu Jul 24 04:54:06 2025
 Response via : Initial Calibration
 Integrator: ChemStation

Volume Inj. : 2 µl
 Signal #1 Phase : ZB-MR1 Signal #2 Phase: ZB-MR2
 Signal #1 Info : 30Mx0.32mmx 0.50µ Signal #2 Info : 30M x 0.32mm x 0.25µm

Compound	RT#1	RT#2	Resp#1	Resp#2	ng/ml	ng/ml

System Monitoring Compounds						
1) SA Tetrachlo...	3.669	3.661	408.8E6	239.0E6	50.277	48.105
2) SA Decachlor...	8.693	8.637	382.7E6	88262000	52.344	49.947
Target Compounds						
3) L1 AR-1016-1	4.754	4.736	138.4E6	82099393	515.560	469.121
4) L1 AR-1016-2	4.773	4.754	207.4E6	123.8E6	510.730	475.075
5) L1 AR-1016-3	4.830	4.929	130.2E6	64613008	497.699	475.213
6) L1 AR-1016-4	4.950	4.972	106.6E6	53060609	503.192	477.659
7) L1 AR-1016-5	5.206	5.183	119.8E6	70232314	545.689	490.097
31) L7 AR-1260-1	6.244	6.211	225.8E6	123.2E6	514.058	495.616
32) L7 AR-1260-2	6.434	6.400	352.9E6	162.9E6	513.067	494.394
33) L7 AR-1260-3	6.799	6.551	319.6E6	130.1E6	543.441	506.215
34) L7 AR-1260-4	7.059	7.021	231.1E6	96863277	512.499	506.314
35) L7 AR-1260-5	7.301	7.263	639.8E6	215.1E6	516.316	521.723

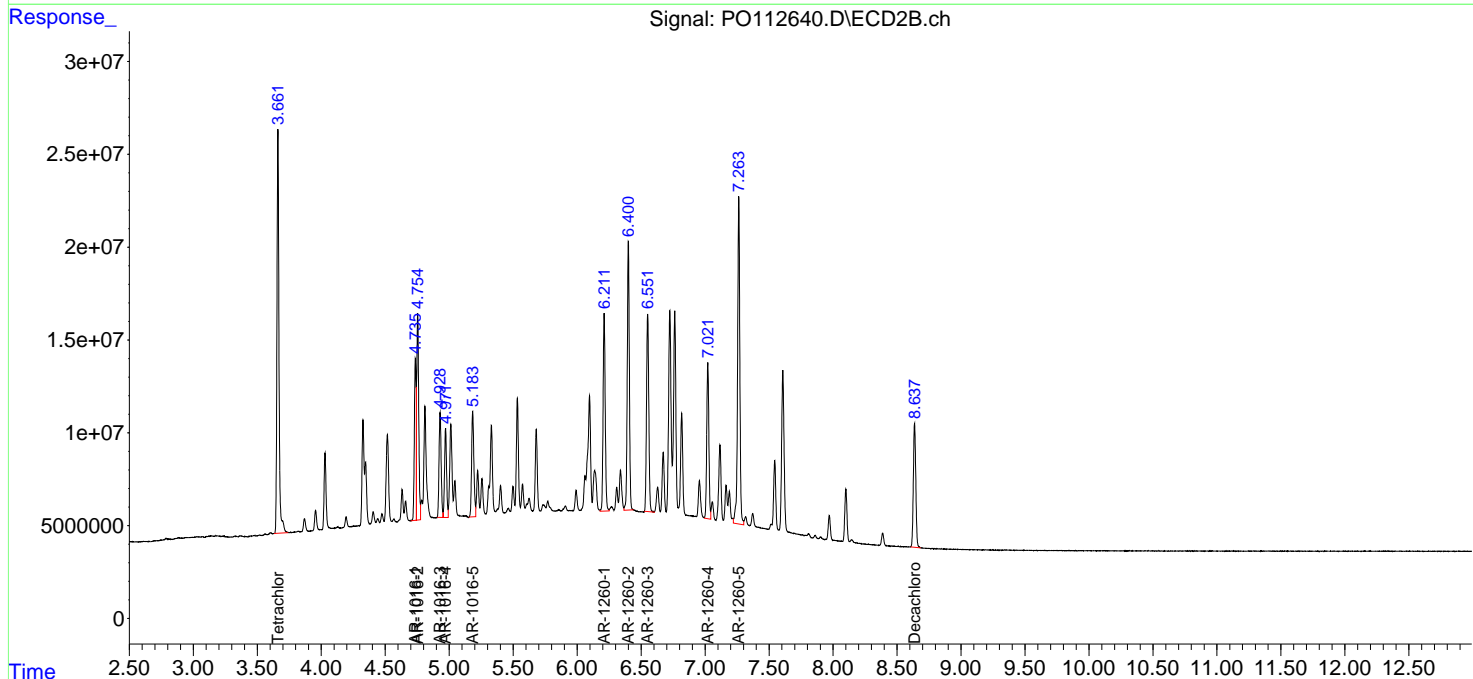
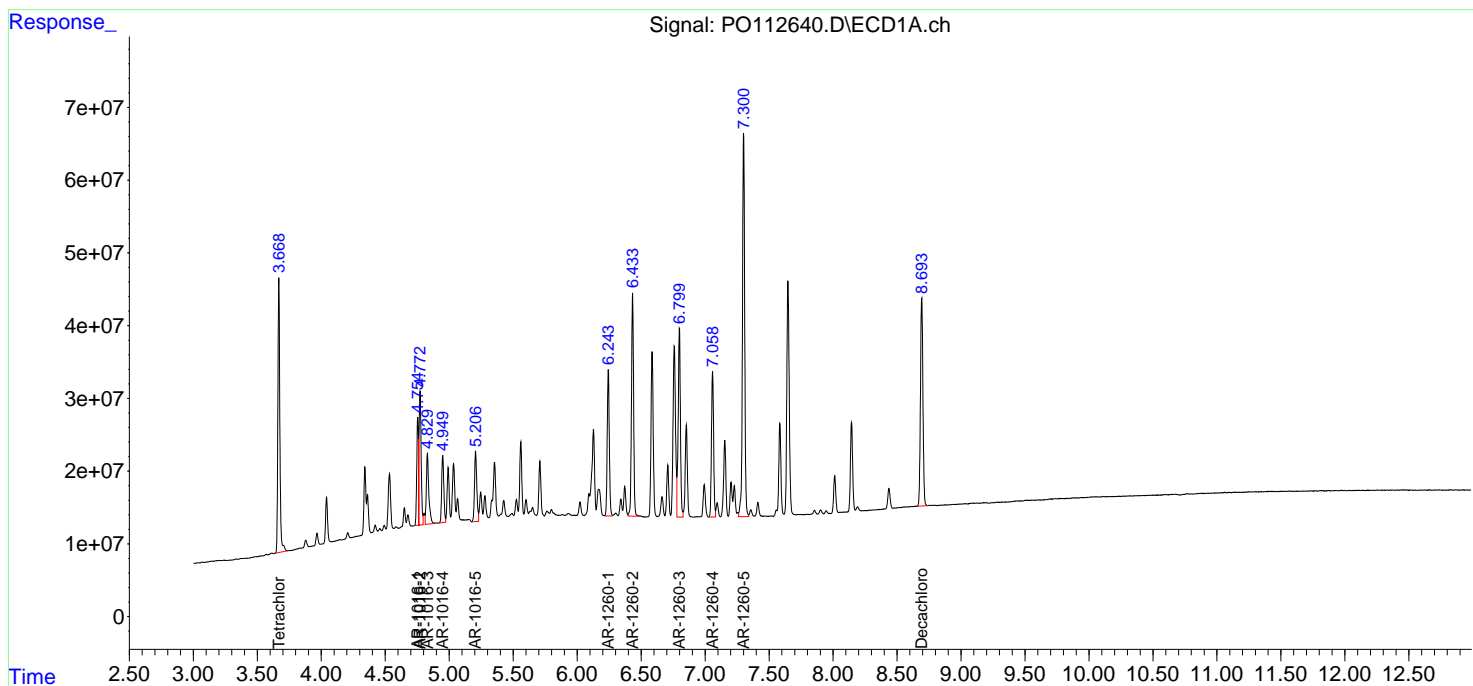
(f)=RT Delta > 1/2 Window (#)=Amounts differ by > 25% (m)=manual int.

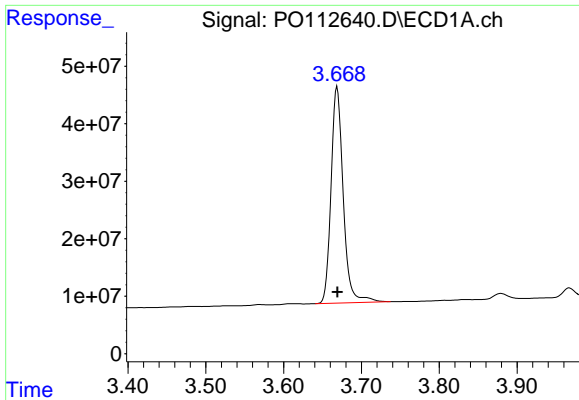
Data Path : Z:\pestpcbsrv\HPCHEM1\ECD_O\Data\P0073125\
 Data File : P0112640.D
 Signal(s) : Signal #1: ECD1A.ch Signal #2: ECD2B.ch
 Acq On : 31 Jul 2025 13:32
 Operator : YP/AJ
 Sample : AR1660CCC500
 Misc :
 ALS Vial : 3 Sample Multiplier: 1

Instrument :
 ECD_O
 ClientSampleId :
 AR1660CCC500

Integration File signal 1: autoint1.e
 Integration File signal 2: autoint2.e
 Quant Time: Jul 31 23:06:55 2025
 Quant Method : Z:\pestpcbsrv\HPCHEM1\ECD_O\methods\P0072325.M
 Quant Title : GC EXTRACTABLES
 QLast Update : Thu Jul 24 04:54:06 2025
 Response via : Initial Calibration
 Integrator: ChemStation

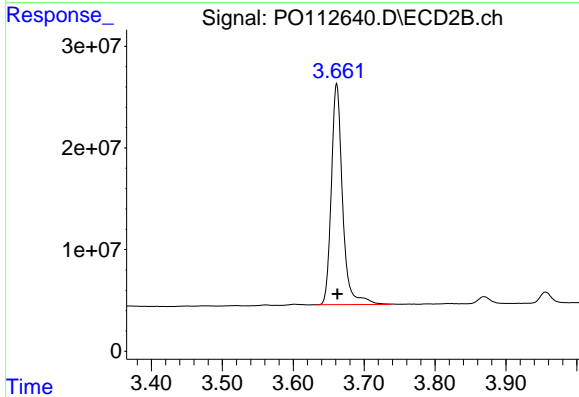
Volume Inj. : 2 µl
 Signal #1 Phase : ZB-MR1 Signal #2 Phase: ZB-MR2
 Signal #1 Info : 30Mx0.32mmx 0.50µ Signal #2 Info : 30M x 0.32mm x 0.25µm



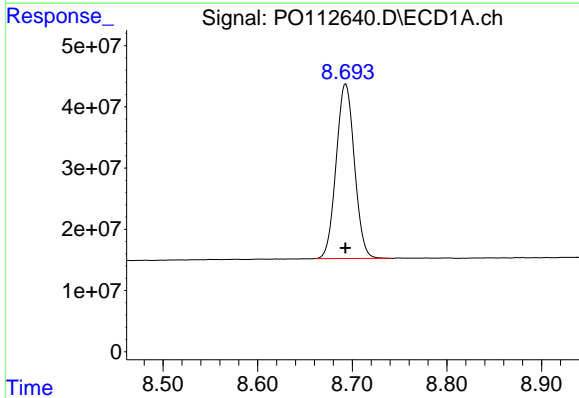


#1 Tetrachloro-m-xylene
 R.T.: 3.669 min
 Delta R.T.: 0.000 min
 Response: 408834260
 Conc: 50.28 ng/ml

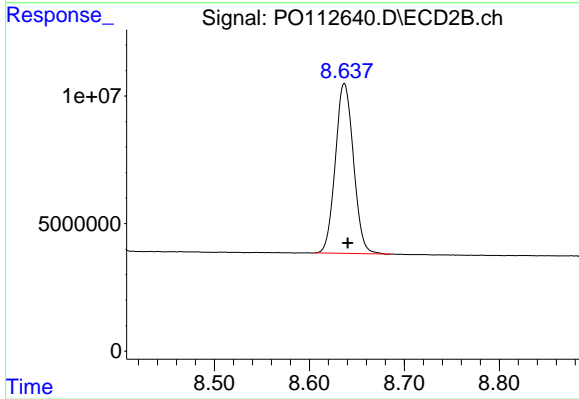
Instrument :
 ECD_O
 ClientSampleId :
 AR1660CCC500



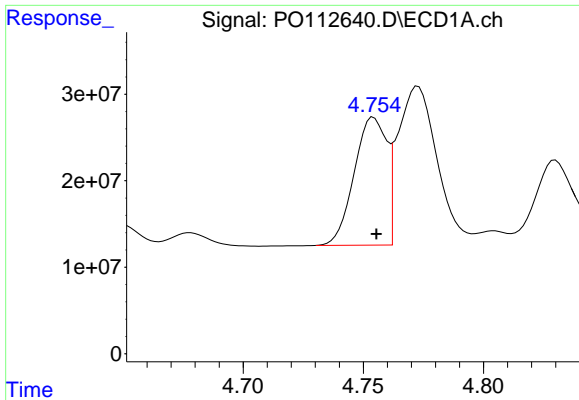
#1 Tetrachloro-m-xylene
 R.T.: 3.661 min
 Delta R.T.: -0.001 min
 Response: 239043983
 Conc: 48.11 ng/ml



#2 Decachlorobiphenyl
 R.T.: 8.693 min
 Delta R.T.: 0.000 min
 Response: 382732308
 Conc: 52.34 ng/ml



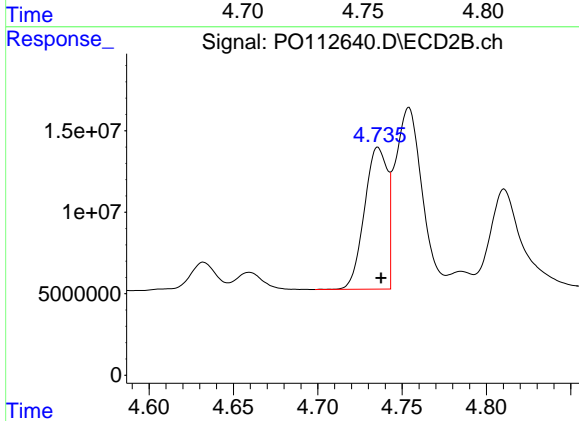
#2 Decachlorobiphenyl
 R.T.: 8.637 min
 Delta R.T.: -0.004 min
 Response: 88262000
 Conc: 49.95 ng/ml



#3 AR-1016-1

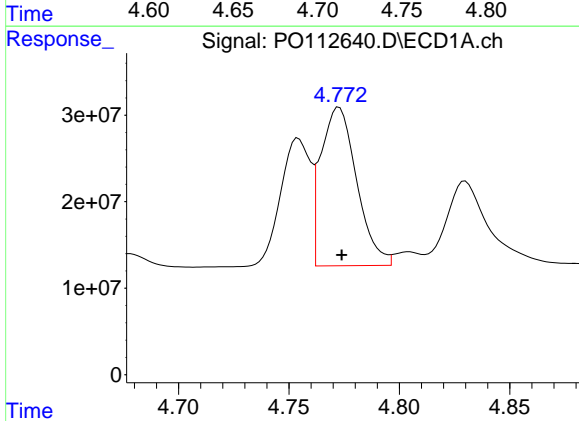
R.T.: 4.754 min
 Delta R.T.: -0.001 min
 Response: 138358791
 Conc: 515.56 ng/ml

Instrument :
 ECD_O
 ClientSampleId :
 AR1660CCC500



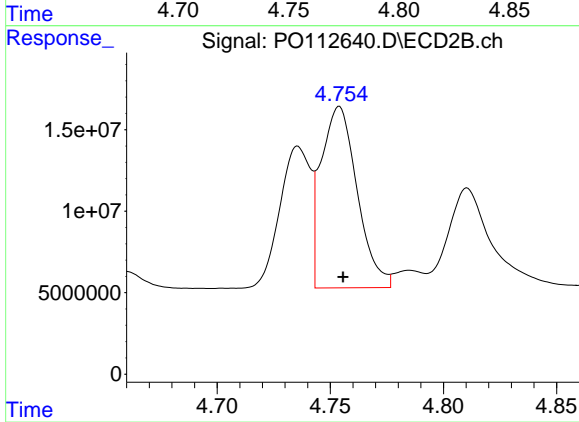
#3 AR-1016-1

R.T.: 4.736 min
 Delta R.T.: -0.002 min
 Response: 82099393
 Conc: 469.12 ng/ml



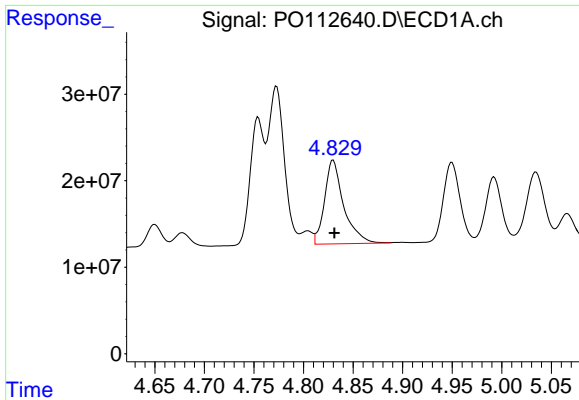
#4 AR-1016-2

R.T.: 4.773 min
 Delta R.T.: -0.001 min
 Response: 207416244
 Conc: 510.73 ng/ml



#4 AR-1016-2

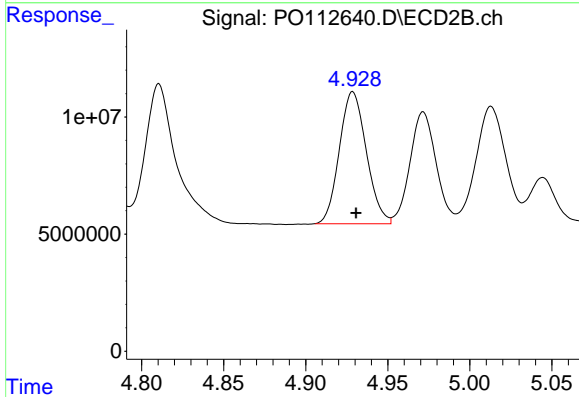
R.T.: 4.754 min
 Delta R.T.: -0.002 min
 Response: 123754764
 Conc: 475.08 ng/ml



#5 AR-1016-3

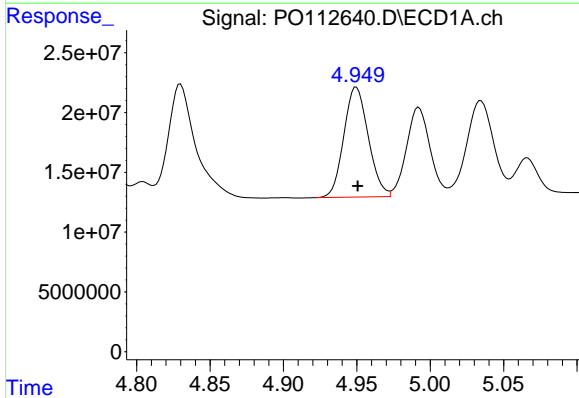
R.T.: 4.830 min
 Delta R.T.: -0.001 min
 Response: 130234975
 Conc: 497.70 ng/ml

Instrument :
 ECD_O
 ClientSampleId :
 AR1660CCC500



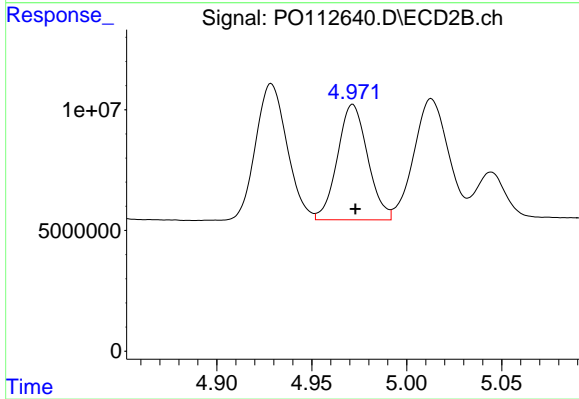
#5 AR-1016-3

R.T.: 4.929 min
 Delta R.T.: -0.002 min
 Response: 64613008
 Conc: 475.21 ng/ml



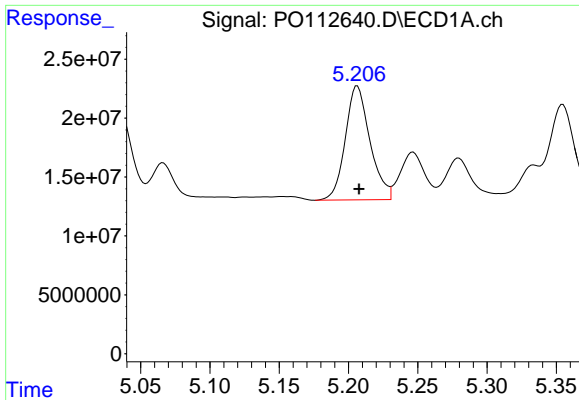
#6 AR-1016-4

R.T.: 4.950 min
 Delta R.T.: 0.000 min
 Response: 106596966
 Conc: 503.19 ng/ml



#6 AR-1016-4

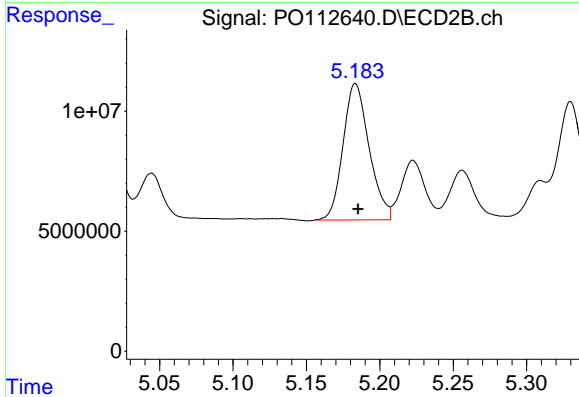
R.T.: 4.972 min
 Delta R.T.: -0.001 min
 Response: 53060609
 Conc: 477.66 ng/ml



#7 AR-1016-5

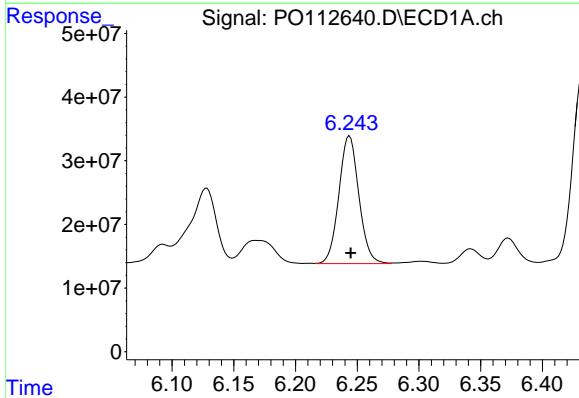
R.T.: 5.206 min
 Delta R.T.: -0.001 min
 Response: 119762708
 Conc: 545.69 ng/ml

Instrument :
 ECD_O
 ClientSampleId :
 AR1660CCC500



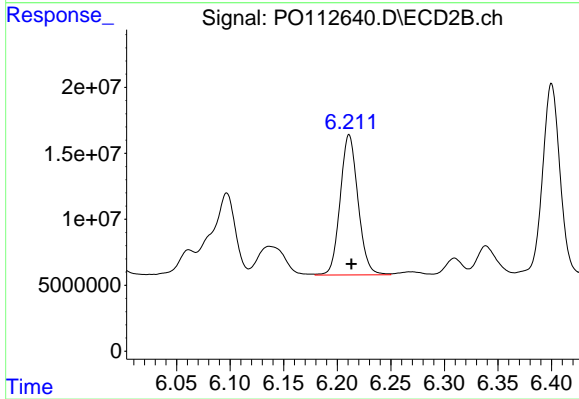
#7 AR-1016-5

R.T.: 5.183 min
 Delta R.T.: -0.002 min
 Response: 70232314
 Conc: 490.10 ng/ml



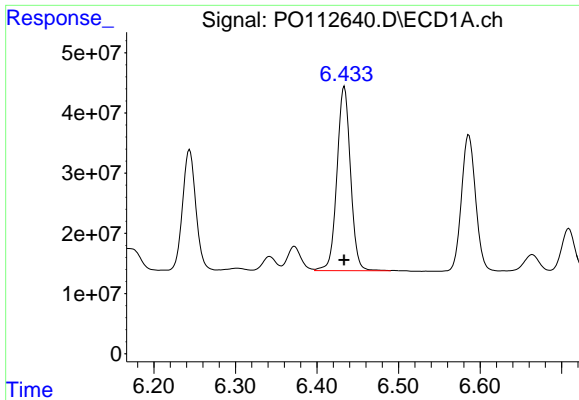
#31 AR-1260-1

R.T.: 6.244 min
 Delta R.T.: -0.001 min
 Response: 225841496
 Conc: 514.06 ng/ml



#31 AR-1260-1

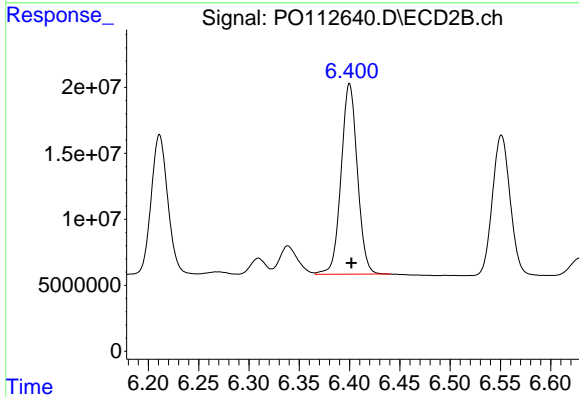
R.T.: 6.211 min
 Delta R.T.: -0.002 min
 Response: 123166009
 Conc: 495.62 ng/ml



#32 AR-1260-2

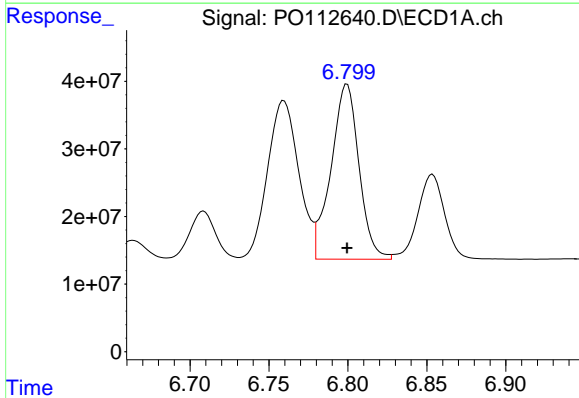
R.T.: 6.434 min
 Delta R.T.: 0.000 min
 Response: 352935622
 Conc: 513.07 ng/ml

Instrument :
 ECD_O
 ClientSampleId :
 AR1660CCC500



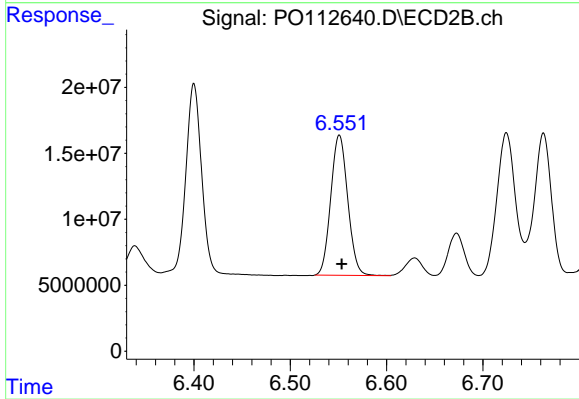
#32 AR-1260-2

R.T.: 6.400 min
 Delta R.T.: -0.002 min
 Response: 162899461
 Conc: 494.39 ng/ml



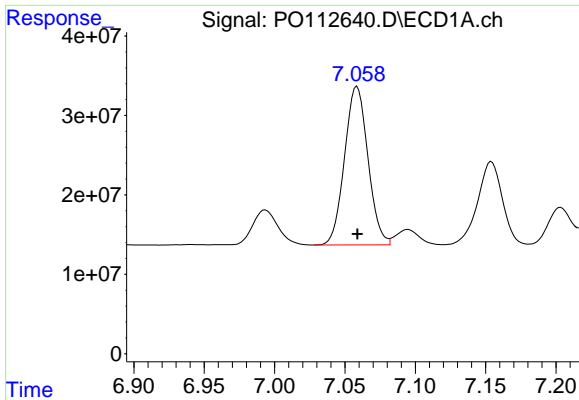
#33 AR-1260-3

R.T.: 6.799 min
 Delta R.T.: 0.000 min
 Response: 319553860
 Conc: 543.44 ng/ml



#33 AR-1260-3

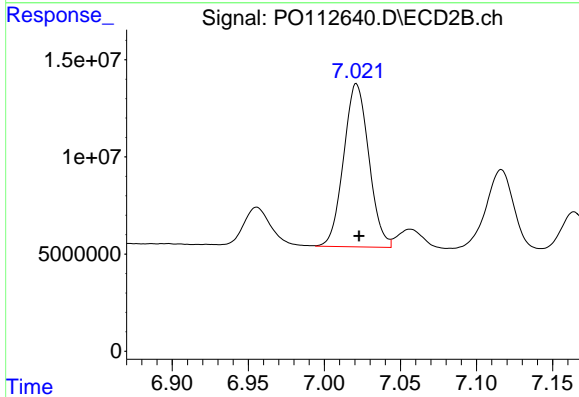
R.T.: 6.551 min
 Delta R.T.: -0.002 min
 Response: 130057259
 Conc: 506.21 ng/ml



#34 AR-1260-4

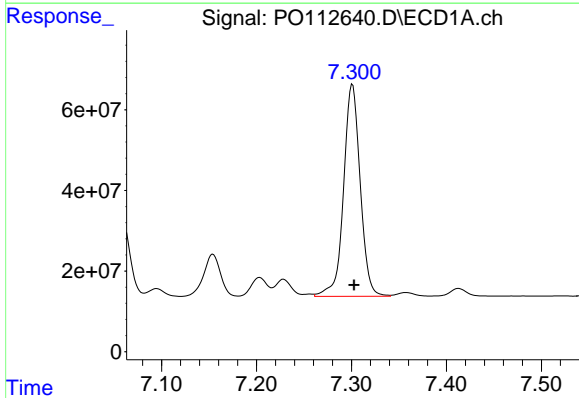
R.T.: 7.059 min
 Delta R.T.: 0.000 min
 Response: 231139273
 Conc: 512.50 ng/ml

Instrument :
 ECD_O
 ClientSampleId :
 AR1660CCC500



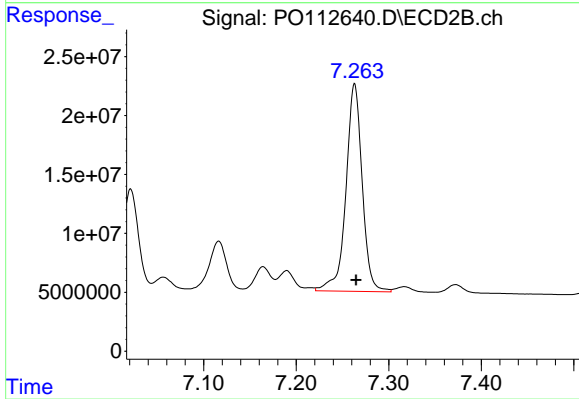
#34 AR-1260-4

R.T.: 7.021 min
 Delta R.T.: -0.002 min
 Response: 96863277
 Conc: 506.31 ng/ml



#35 AR-1260-5

R.T.: 7.301 min
 Delta R.T.: -0.002 min
 Response: 639786902
 Conc: 516.32 ng/ml



#35 AR-1260-5

R.T.: 7.263 min
 Delta R.T.: -0.001 min
 Response: 215050932
 Conc: 521.72 ng/ml