

Data Path : Z:\pestpcbsrv\HPCHEM1\ECD\_0\Data\P0073125\  
 Data File : PO112649.D  
 Signal(s) : Signal #1: ECD1A.ch Signal #2: ECD2B.ch  
 Acq On : 31 Jul 2025 16:15  
 Operator : YP/AJ  
 Sample : Q2728-01MS  
 Misc :  
 ALS Vial : 17 Sample Multiplier: 1

Instrument :  
 ECD\_0  
 ClientSampleId :  
 7211931-VNJ240MS

Integration File signal 1: autoint1.e  
 Integration File signal 2: autoint2.e  
 Quant Time: Jul 31 23:09:57 2025  
 Quant Method : Z:\pestpcbsrv\HPCHEM1\ECD\_0\methods\P0072325.M  
 Quant Title : GC EXTRACTABLES  
 QLast Update : Thu Jul 24 04:54:06 2025  
 Response via : Initial Calibration  
 Integrator: ChemStation

Volume Inj. : 2 µl  
 Signal #1 Phase : ZB-MR1 Signal #2 Phase: ZB-MR2  
 Signal #1 Info : 30Mx0.32mmx 0.50µ Signal #2 Info : 30M x 0.32mm x 0.25µm

Compound	RT#1	RT#2	Resp#1	Resp#2	ng/ml	ng/ml
-----						
System Monitoring Compounds						
1) SA Tetrachlo...	3.668	3.660	156.2E6	90995523	19.214	18.312
2) SA Decachlor...	8.691	8.636	133.2E6	34088984	18.222	19.291
Target Compounds						
3) L1 AR-1016-1	4.754	4.735	134.0E6	83661427	499.184	478.046
4) L1 AR-1016-2	4.772	4.753	198.4E6	121.5E6	488.647	466.301
5) L1 AR-1016-3	4.829	4.928	124.5E6	63245217	475.750	465.153
6) L1 AR-1016-4	4.949	4.971	101.8E6	51260413	480.504	461.453
7) L1 AR-1016-5	5.206	5.182	104.1E6	64240069	474.475	448.281
31) L7 AR-1260-1	6.243	6.210	235.3E6	125.6E6	535.508	505.280
32) L7 AR-1260-2	6.433	6.399	329.9E6	154.8E6	479.521	469.694
33) L7 AR-1260-3	6.798	6.550	234.7E6	123.4E6	399.063	480.169
34) L7 AR-1260-4	7.057	7.020	175.5E6	79441923	389.166	415.251
35) L7 AR-1260-5	7.301	7.262	511.6E6	184.9E6	412.889	448.591

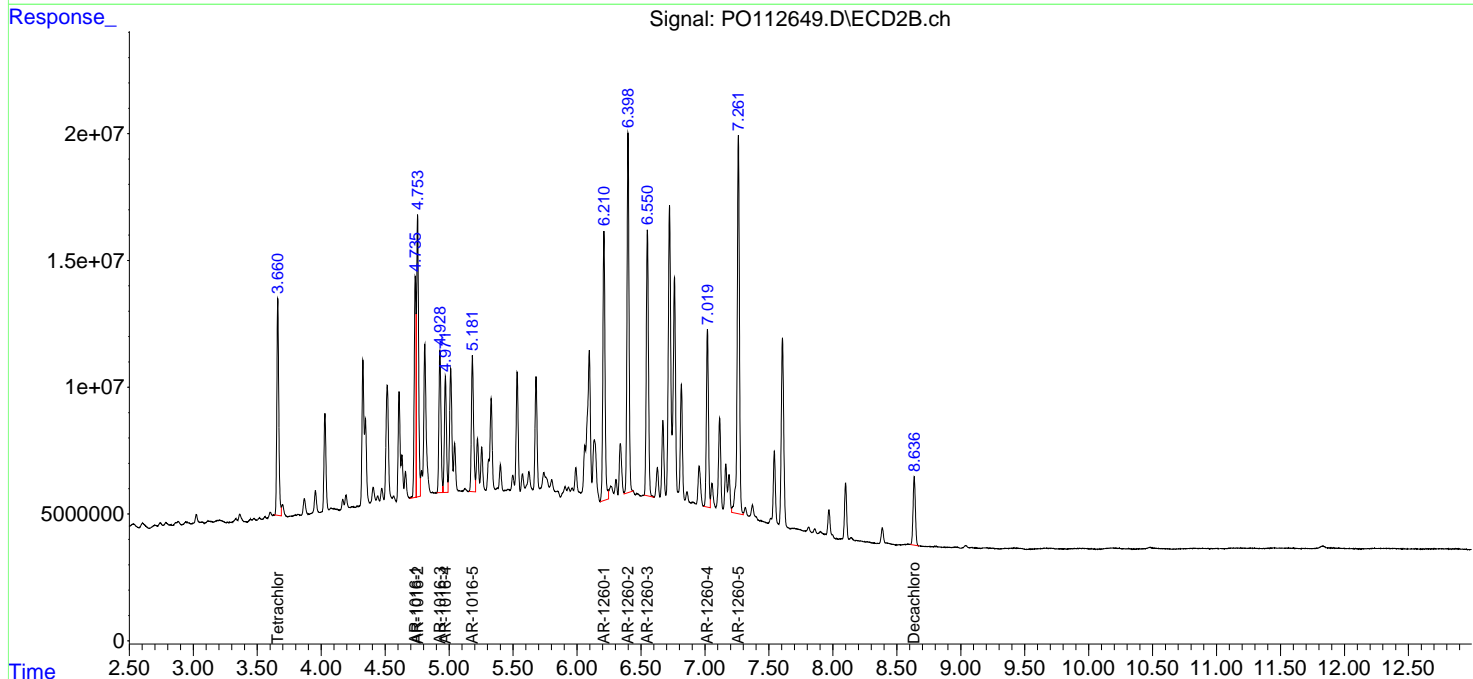
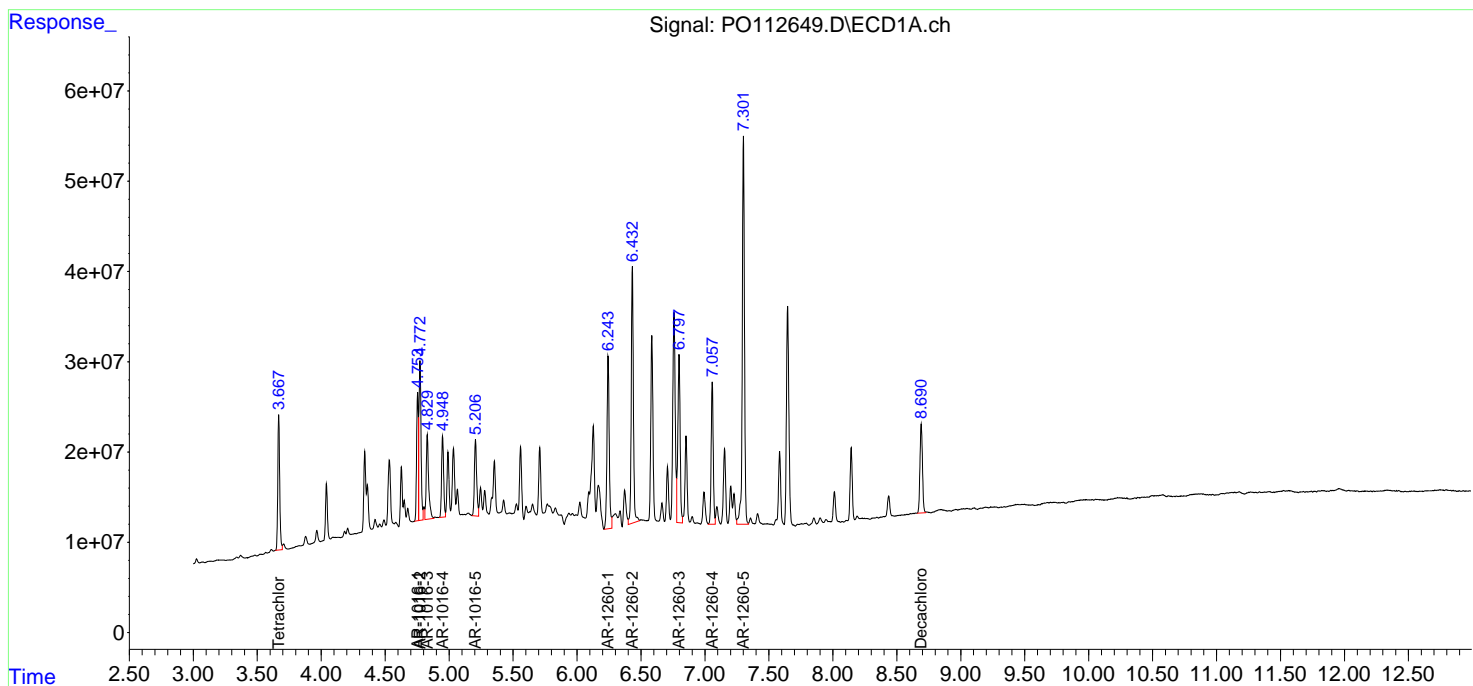
(f)=RT Delta > 1/2 Window (#)=Amounts differ by > 25% (m)=manual int.

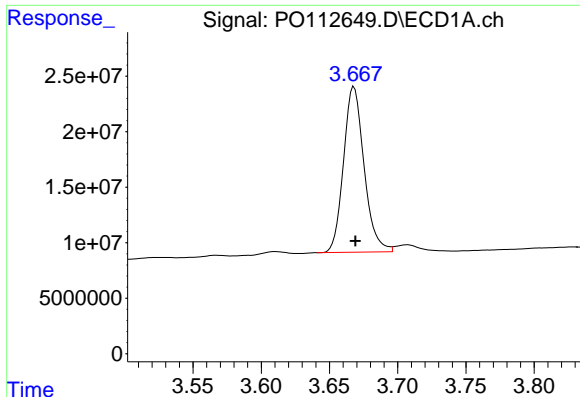
Data Path : Z:\pestpcbsrv\HPCHEM1\ECD\_O\Data\PO073125\  
 Data File : PO112649.D  
 Signal(s) : Signal #1: ECD1A.ch Signal #2: ECD2B.ch  
 Acq On : 31 Jul 2025 16:15  
 Operator : YP/AJ  
 Sample : Q2728-01MS  
 Misc :  
 ALS Vial : 17 Sample Multiplier: 1

Instrument :  
 ECD\_O  
 ClientSampleId :  
 7211931-VNJ240MS

Integration File signal 1: autoint1.e  
 Integration File signal 2: autoint2.e  
 Quant Time: Jul 31 23:09:57 2025  
 Quant Method : Z:\pestpcbsrv\HPCHEM1\ECD\_O\methods\PO072325.M  
 Quant Title : GC EXTRACTABLES  
 QLast Update : Thu Jul 24 04:54:06 2025  
 Response via : Initial Calibration  
 Integrator: ChemStation

Volume Inj. : 2 µl  
 Signal #1 Phase : ZB-MR1 Signal #2 Phase: ZB-MR2  
 Signal #1 Info : 30Mx0.32mmx 0.50µ Signal #2 Info : 30M x 0.32mm x 0.25µm

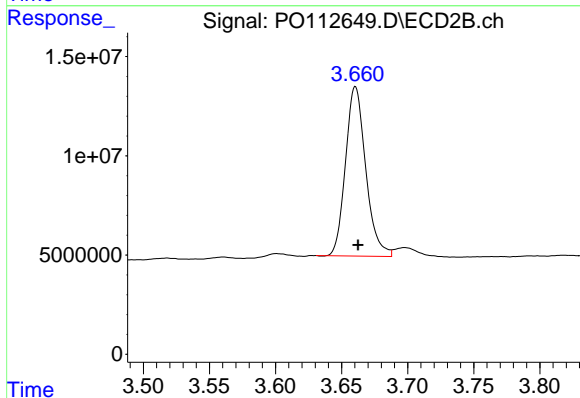




#1 Tetrachloro-m-xylene

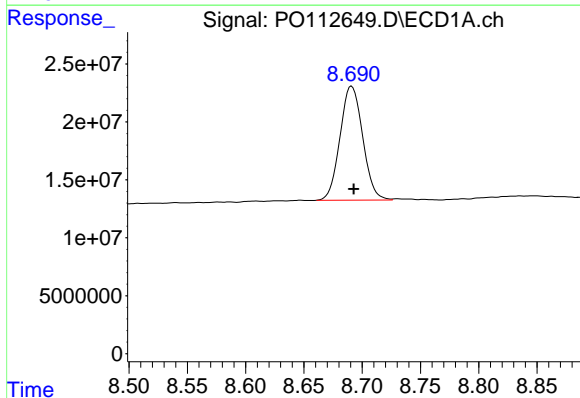
R.T.: 3.668 min  
 Delta R.T.: 0.000 min  
 Response: 156243070  
 Conc: 19.21 ng/ml

Instrument :  
 ECD\_O  
 ClientSampleId :  
 7211931-VNJ240MS



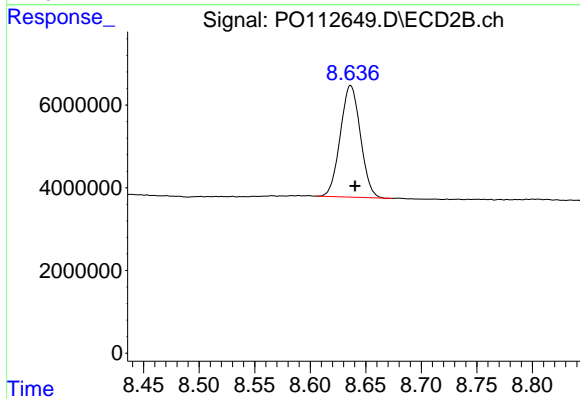
#1 Tetrachloro-m-xylene

R.T.: 3.660 min  
 Delta R.T.: -0.002 min  
 Response: 90995523  
 Conc: 18.31 ng/ml



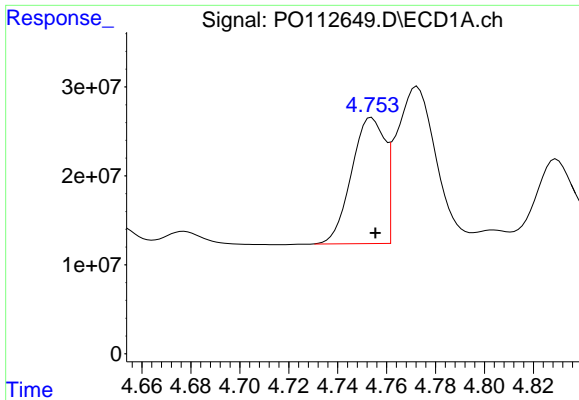
#2 Decachlorobiphenyl

R.T.: 8.691 min  
 Delta R.T.: -0.002 min  
 Response: 133235181  
 Conc: 18.22 ng/ml



#2 Decachlorobiphenyl

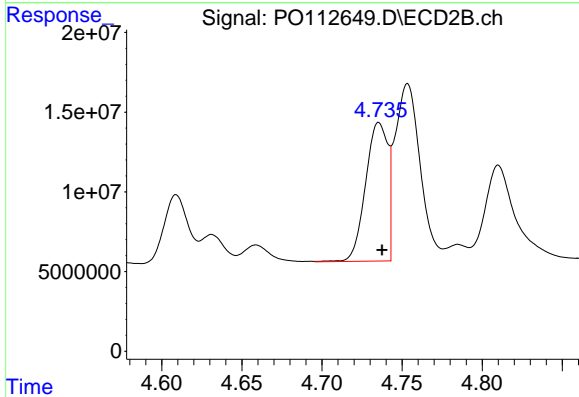
R.T.: 8.636 min  
 Delta R.T.: -0.004 min  
 Response: 34088984  
 Conc: 19.29 ng/ml



#3 AR-1016-1

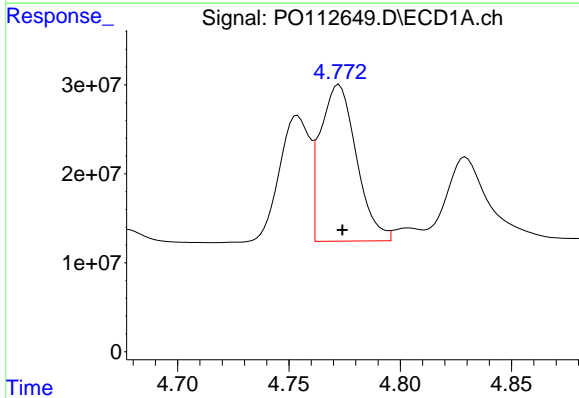
R.T.: 4.754 min  
 Delta R.T.: -0.002 min  
 Response: 133963851  
 Conc: 499.18 ng/ml

Instrument :  
 ECD\_O  
 ClientSampleId :  
 7211931-VNJ240MS



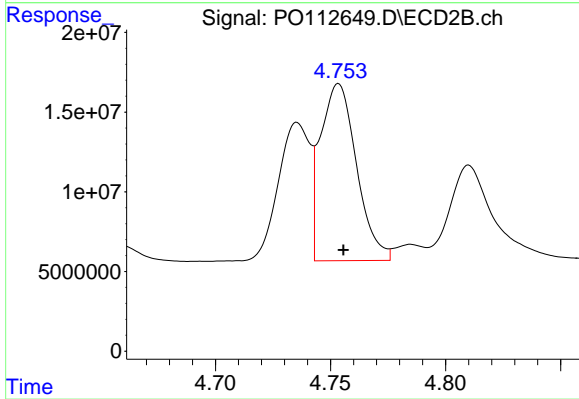
#3 AR-1016-1

R.T.: 4.735 min  
 Delta R.T.: -0.002 min  
 Response: 83661427  
 Conc: 478.05 ng/ml



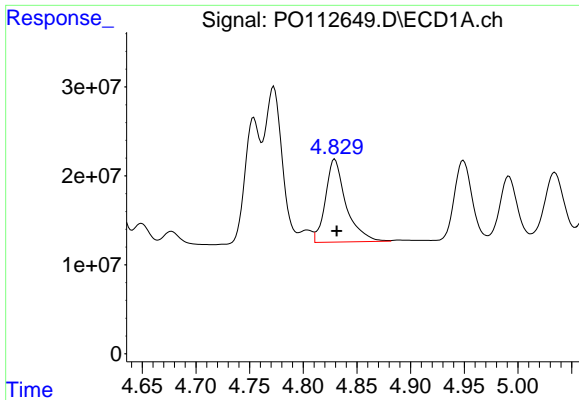
#4 AR-1016-2

R.T.: 4.772 min  
 Delta R.T.: -0.002 min  
 Response: 198448282  
 Conc: 488.65 ng/ml



#4 AR-1016-2

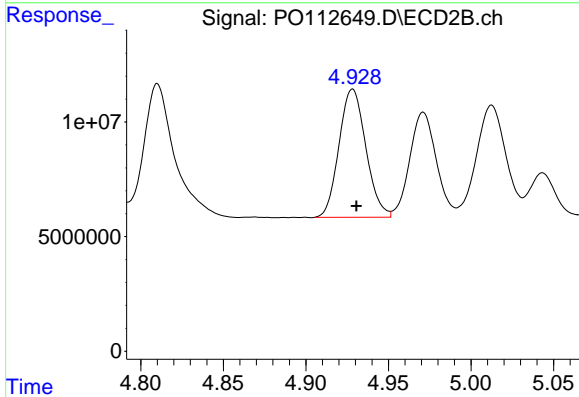
R.T.: 4.753 min  
 Delta R.T.: -0.002 min  
 Response: 121469090  
 Conc: 466.30 ng/ml



#5 AR-1016-3

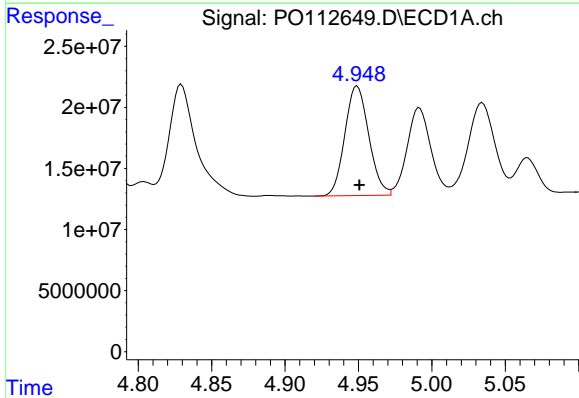
R.T.: 4.829 min  
 Delta R.T.: -0.002 min  
 Response: 124491370  
 Conc: 475.75 ng/ml

Instrument :  
 ECD\_O  
 ClientSampleId :  
 7211931-VNJ240MS



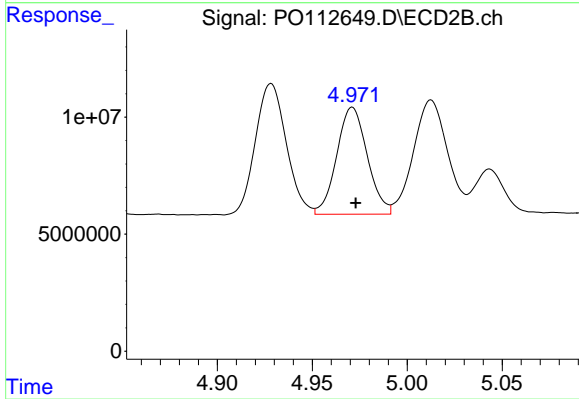
#5 AR-1016-3

R.T.: 4.928 min  
 Delta R.T.: -0.002 min  
 Response: 63245217  
 Conc: 465.15 ng/ml



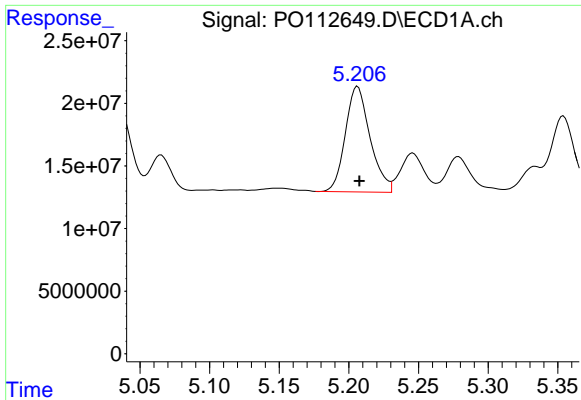
#6 AR-1016-4

R.T.: 4.949 min  
 Delta R.T.: -0.001 min  
 Response: 101790731  
 Conc: 480.50 ng/ml



#6 AR-1016-4

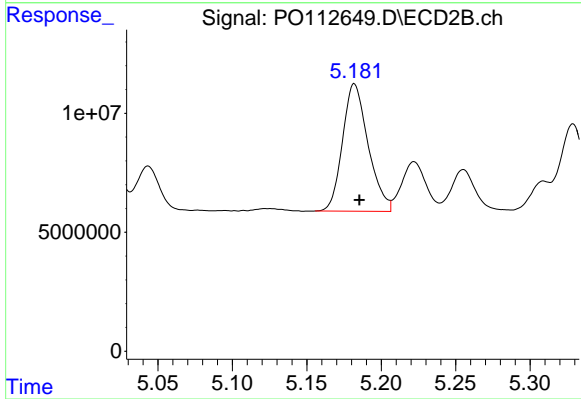
R.T.: 4.971 min  
 Delta R.T.: -0.002 min  
 Response: 51260413  
 Conc: 461.45 ng/ml



#7 AR-1016-5

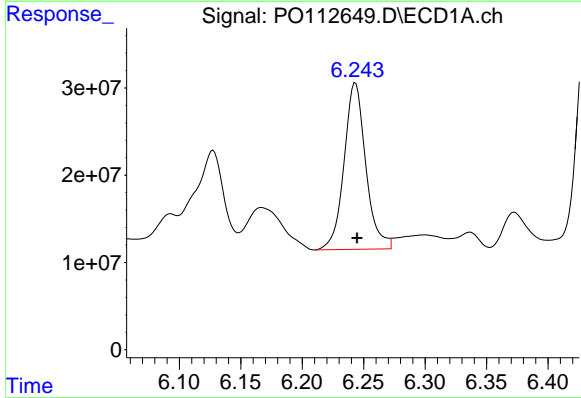
R.T.: 5.206 min  
Delta R.T.: -0.001 min  
Response: 104133241  
Conc: 474.47 ng/ml

Instrument :  
ECD\_O  
ClientSampleId :  
7211931-VNJ240MS



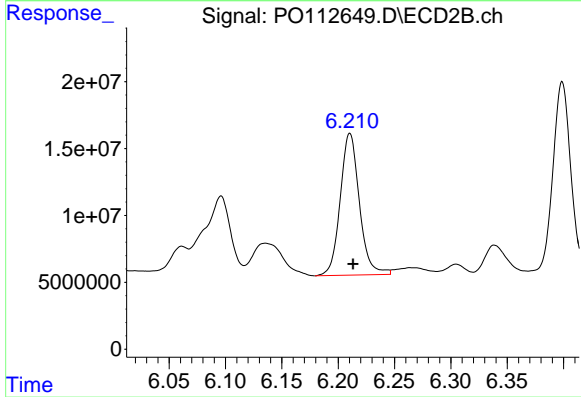
#7 AR-1016-5

R.T.: 5.182 min  
Delta R.T.: -0.003 min  
Response: 64240069  
Conc: 448.28 ng/ml



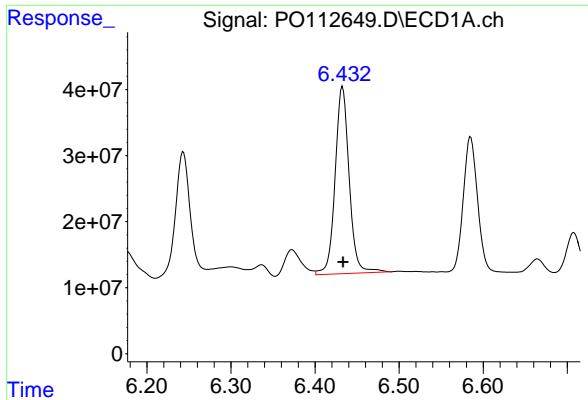
#31 AR-1260-1

R.T.: 6.243 min  
Delta R.T.: -0.002 min  
Response: 235265365  
Conc: 535.51 ng/ml



#31 AR-1260-1

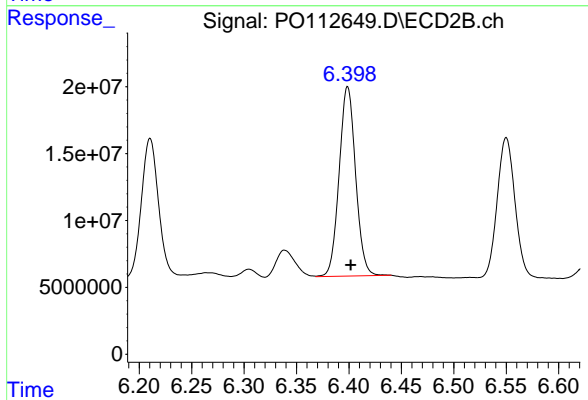
R.T.: 6.210 min  
Delta R.T.: -0.003 min  
Response: 125567708  
Conc: 505.28 ng/ml



#32 AR-1260-2

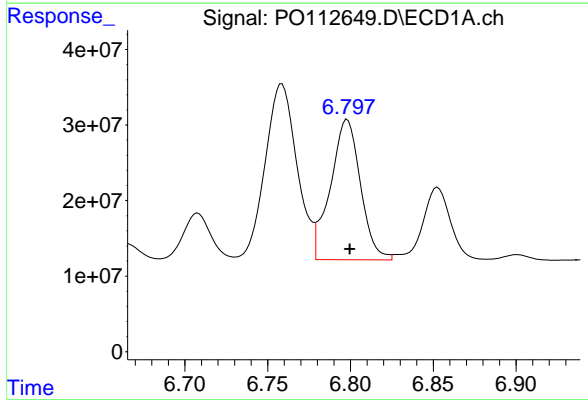
R.T.: 6.433 min  
 Delta R.T.: 0.000 min  
 Response: 329859199  
 Conc: 479.52 ng/ml

Instrument :  
 ECD\_O  
 ClientSampleId :  
 7211931-VNJ240MS



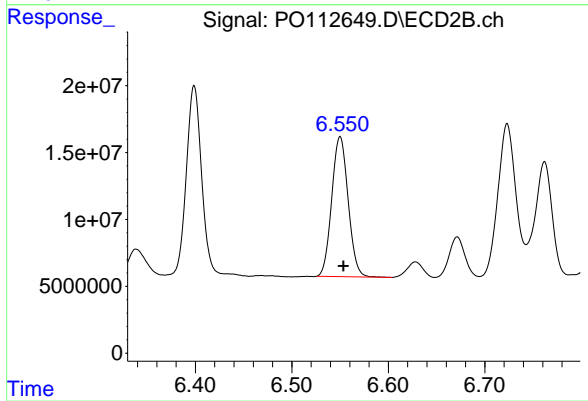
#32 AR-1260-2

R.T.: 6.399 min  
 Delta R.T.: -0.003 min  
 Response: 154761086  
 Conc: 469.69 ng/ml



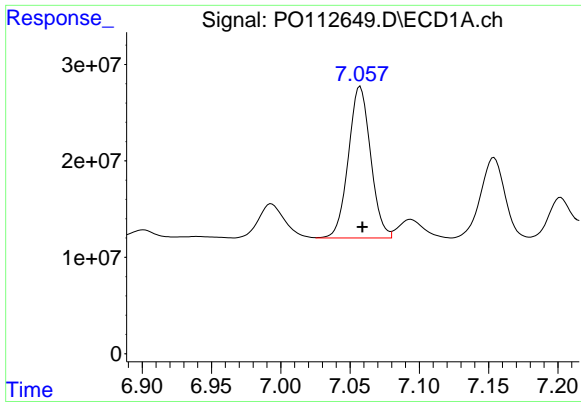
#33 AR-1260-3

R.T.: 6.798 min  
 Delta R.T.: -0.001 min  
 Response: 234657016  
 Conc: 399.06 ng/ml



#33 AR-1260-3

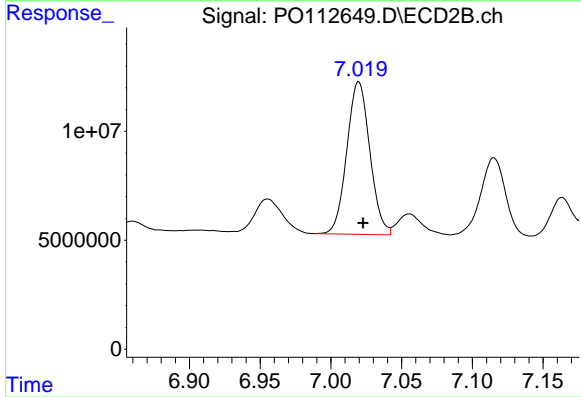
R.T.: 6.550 min  
 Delta R.T.: -0.003 min  
 Response: 123365608  
 Conc: 480.17 ng/ml



#34 AR-1260-4

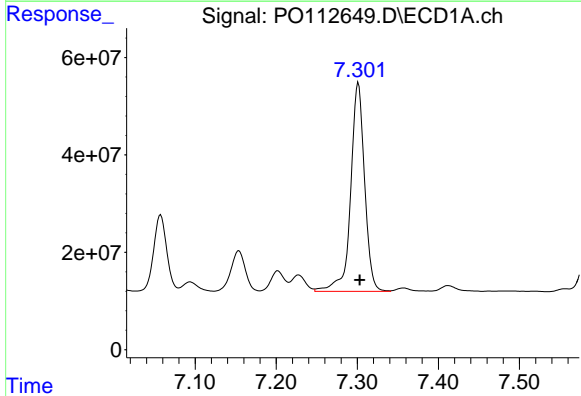
R.T.: 7.057 min  
 Delta R.T.: -0.002 min  
 Response: 175515768  
 Conc: 389.17 ng/ml

Instrument :  
 ECD\_O  
 ClientSampleId :  
 7211931-VNJ240MS



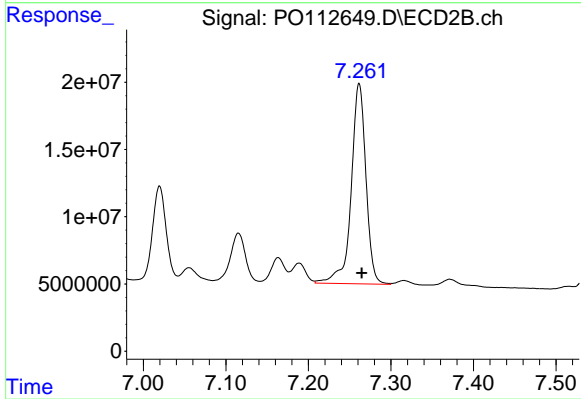
#34 AR-1260-4

R.T.: 7.020 min  
 Delta R.T.: -0.003 min  
 Response: 79441923  
 Conc: 415.25 ng/ml



#35 AR-1260-5

R.T.: 7.301 min  
 Delta R.T.: -0.002 min  
 Response: 511626574  
 Conc: 412.89 ng/ml



#35 AR-1260-5

R.T.: 7.262 min  
 Delta R.T.: -0.003 min  
 Response: 184906487  
 Conc: 448.59 ng/ml