

Data Path : Z:\pestpcbsrv\HPCHEM1\ECD_0\Data\P0073125\
 Data File : PO112652.D
 Signal(s) : Signal #1: ECD1A.ch Signal #2: ECD2B.ch
 Acq On : 31 Jul 2025 18:05
 Operator : YP/AJ
 Sample : AR1242CCC500
 Misc :
 ALS Vial : 4 Sample Multiplier: 1

Instrument :
 ECD_0
 ClientSampleId :
 AR1242CCC500

Integration File signal 1: autoint1.e
 Integration File signal 2: autoint2.e
 Quant Time: Jul 31 23:10:58 2025
 Quant Method : Z:\pestpcbsrv\HPCHEM1\ECD_0\methods\P0072325.M
 Quant Title : GC EXTRACTABLES
 QLast Update : Thu Jul 24 04:54:06 2025
 Response via : Initial Calibration
 Integrator: ChemStation

Volume Inj. : 2 µl
 Signal #1 Phase : ZB-MR1 Signal #2 Phase: ZB-MR2
 Signal #1 Info : 30Mx0.32mmx 0.50µ Signal #2 Info : 30M x 0.32mm x 0.25µm

| Compound | RT#1 | RT#2 | Resp#1 | Resp#2 | ng/ml | ng/ml |
|-----------------------------|-------|-------|----------|----------|---------|---------|
| ----- | | | | | | |
| System Monitoring Compounds | | | | | | |
| 1) SA Tetrachlo... | 3.666 | 3.660 | 382.0E6 | 224.9E6 | 46.975 | 45.257 |
| 2) SA Decachlor... | 8.689 | 8.636 | 330.4E6 | 80759706 | 45.186 | 45.702 |
| Target Compounds | | | | | | |
| 16) L4 AR-1242-1 | 4.752 | 4.734 | 109.8E6 | 68095616 | 443.328 | 429.913 |
| 17) L4 AR-1242-2 | 4.771 | 4.752 | 164.8E6 | 99252816 | 445.759 | 424.763 |
| 18) L4 AR-1242-3 | 4.827 | 4.928 | 104.1E6 | 52288378 | 439.710 | 431.461 |
| 19) L4 AR-1242-4 | 4.947 | 5.012 | 84442336 | 52065660 | 434.646 | 424.197 |
| 20) L4 AR-1242-5 | 5.597 | 5.531 | 93380986 | 69674448 | 436.532 | 432.838 |
| ----- | | | | | | |

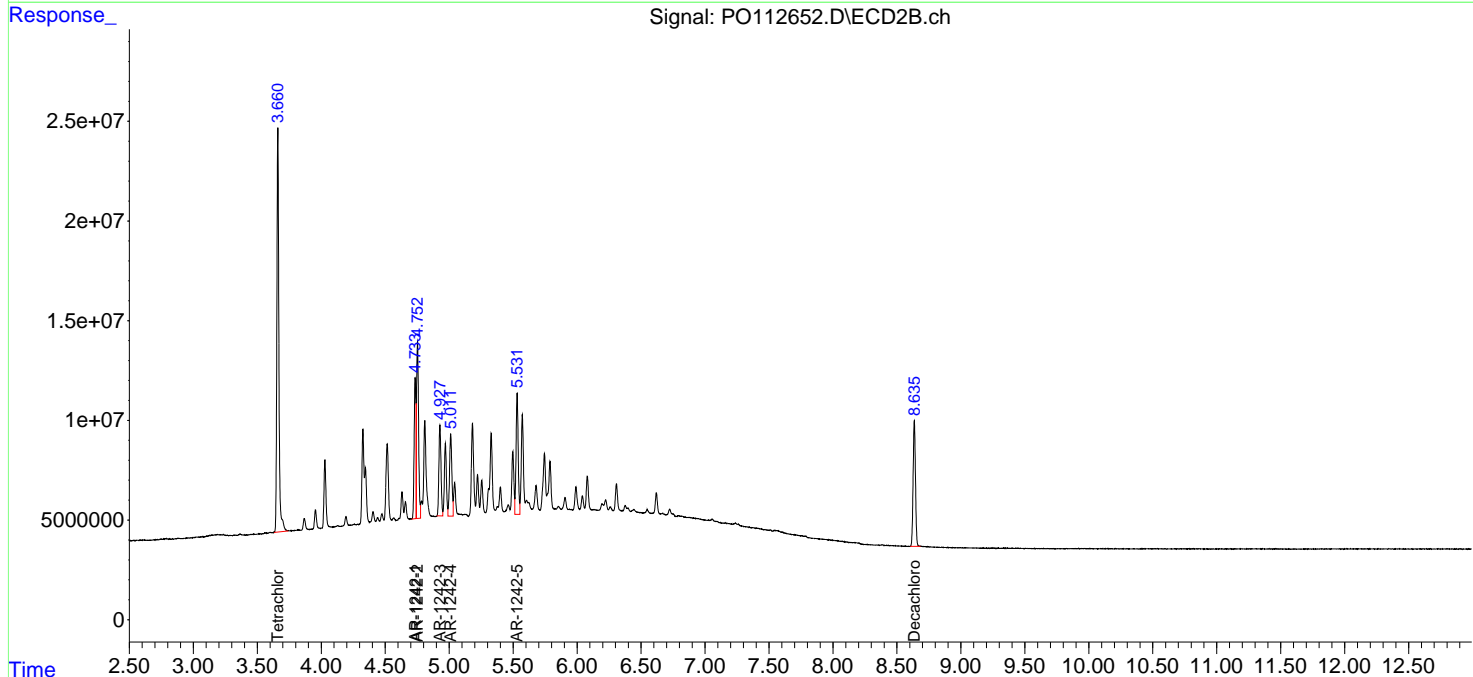
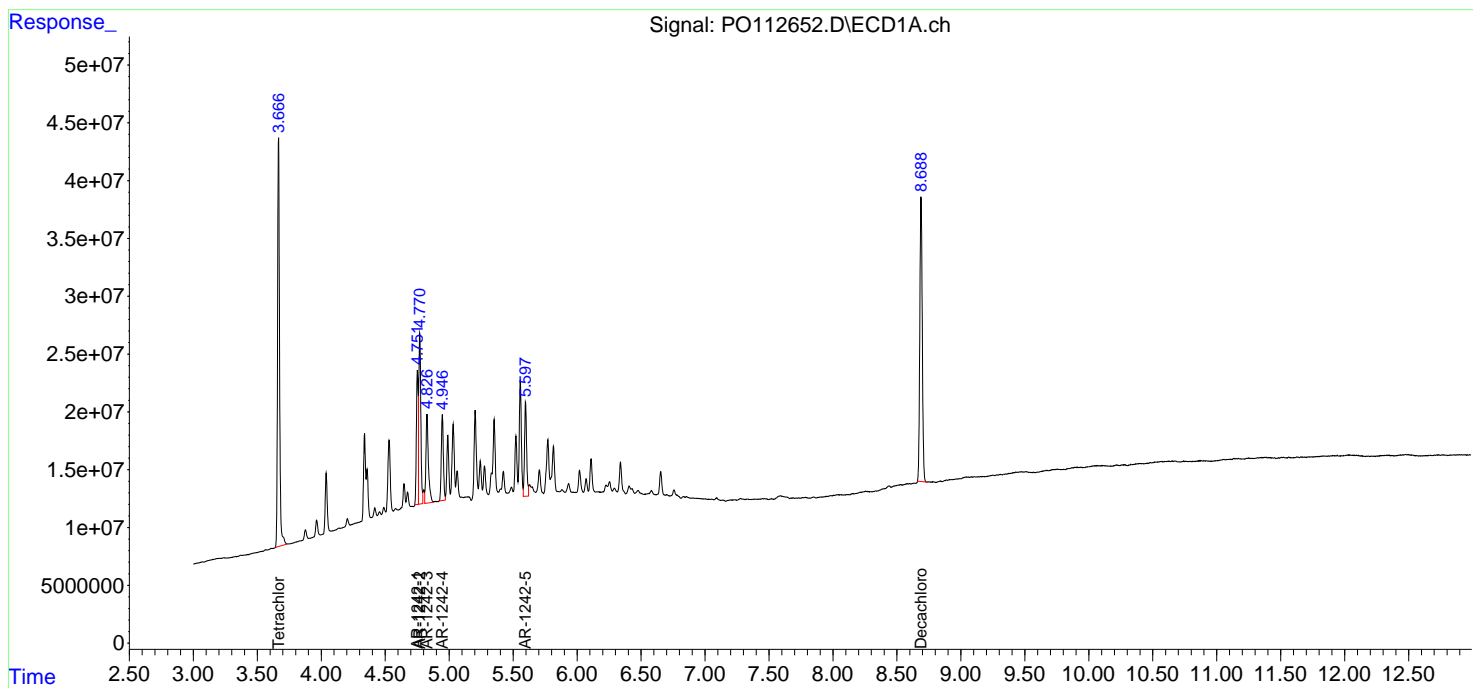
(f)=RT Delta > 1/2 Window (#)=Amounts differ by > 25% (m)=manual int.

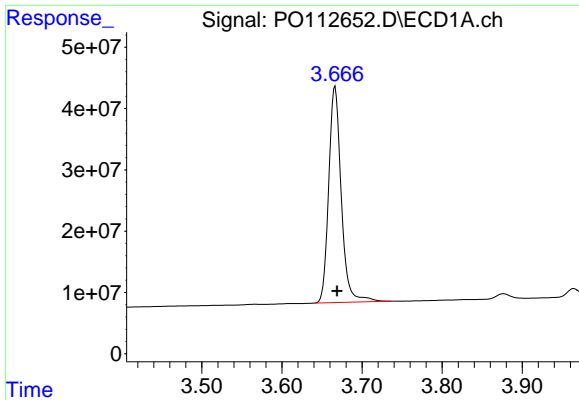
Data Path : Z:\pestpcbsrv\HPCHEM1\ECD_O\Data\P0073125\
 Data File : P0112652.D
 Signal(s) : Signal #1: ECD1A.ch Signal #2: ECD2B.ch
 Acq On : 31 Jul 2025 18:05
 Operator : YP/AJ
 Sample : AR1242CCC500
 Misc :
 ALS Vial : 4 Sample Multiplier: 1

Instrument :
 ECD_O
 ClientSampleId :
 AR1242CCC500

Integration File signal 1: autoint1.e
 Integration File signal 2: autoint2.e
 Quant Time: Jul 31 23:10:58 2025
 Quant Method : Z:\pestpcbsrv\HPCHEM1\ECD_O\methods\P0072325.M
 Quant Title : GC EXTRACTABLES
 QLast Update : Thu Jul 24 04:54:06 2025
 Response via : Initial Calibration
 Integrator: ChemStation

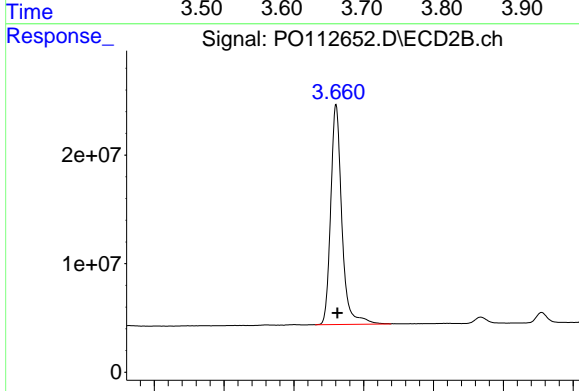
Volume Inj. : 2 µl
 Signal #1 Phase : ZB-MR1 Signal #2 Phase: ZB-MR2
 Signal #1 Info : 30Mx0.32mmx 0.50µ Signal #2 Info : 30M x 0.32mm x 0.25µm



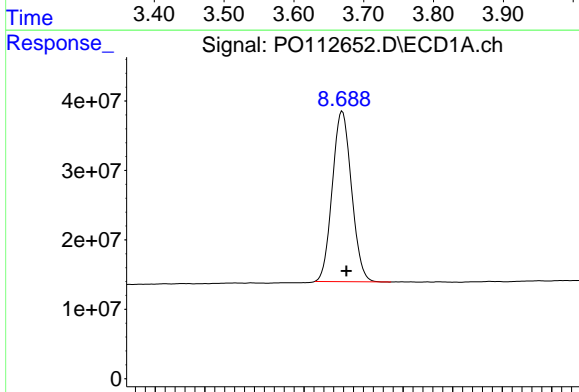


#1 Tetrachloro-m-xylene
 R.T.: 3.666 min
 Delta R.T.: -0.003 min
 Response: 381981545
 Conc: 46.98 ng/ml

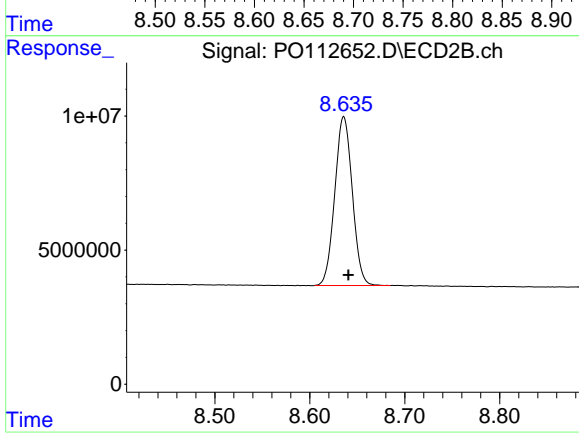
Instrument :
 ECD_O
 ClientSampleId :
 AR1242CCC500



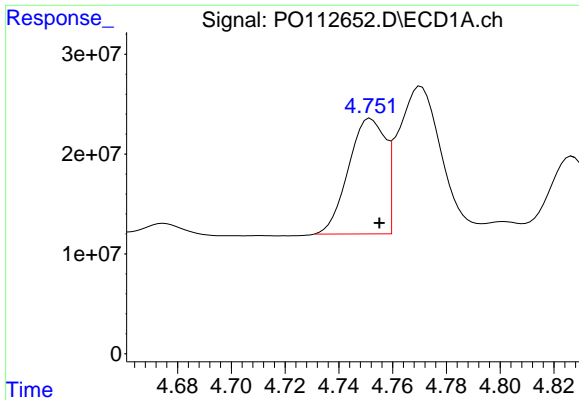
#1 Tetrachloro-m-xylene
 R.T.: 3.660 min
 Delta R.T.: -0.002 min
 Response: 224888438
 Conc: 45.26 ng/ml



#2 Decachlorobiphenyl
 R.T.: 8.689 min
 Delta R.T.: -0.004 min
 Response: 330389400
 Conc: 45.19 ng/ml



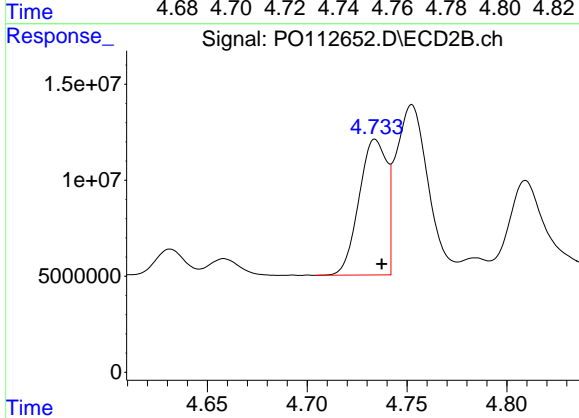
#2 Decachlorobiphenyl
 R.T.: 8.636 min
 Delta R.T.: -0.005 min
 Response: 80759706
 Conc: 45.70 ng/ml



#16 AR-1242-1

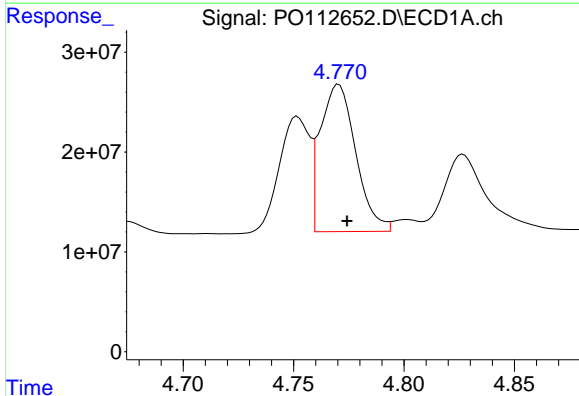
R.T.: 4.752 min
 Delta R.T.: -0.003 min
 Response: 109764565
 Conc: 443.33 ng/ml

Instrument :
 ECD_O
 ClientSampleId :
 AR1242CCC500



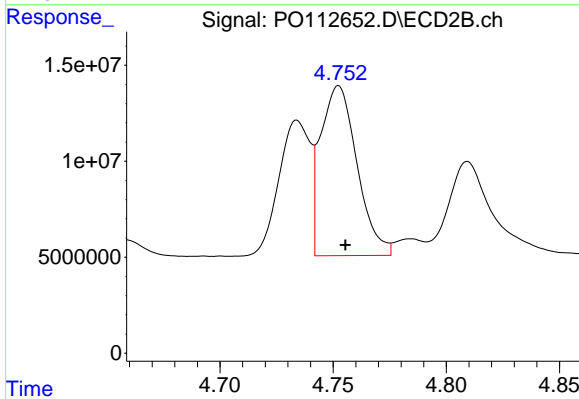
#16 AR-1242-1

R.T.: 4.734 min
 Delta R.T.: -0.003 min
 Response: 68095616
 Conc: 429.91 ng/ml



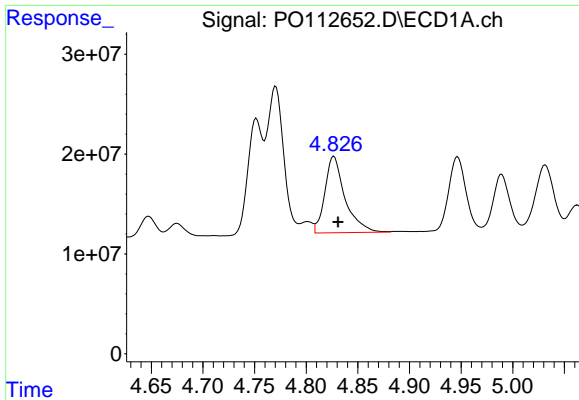
#17 AR-1242-2

R.T.: 4.771 min
 Delta R.T.: -0.004 min
 Response: 164838656
 Conc: 445.76 ng/ml



#17 AR-1242-2

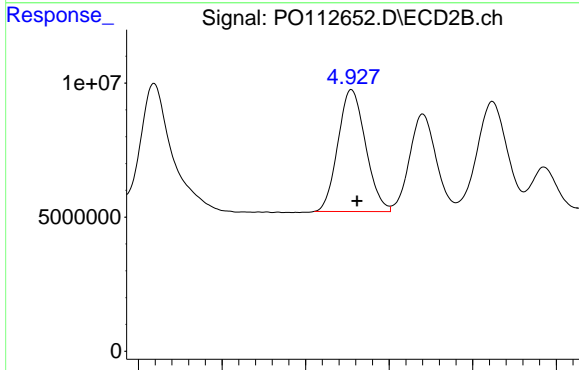
R.T.: 4.752 min
 Delta R.T.: -0.003 min
 Response: 99252816
 Conc: 424.76 ng/ml



#18 AR-1242-3

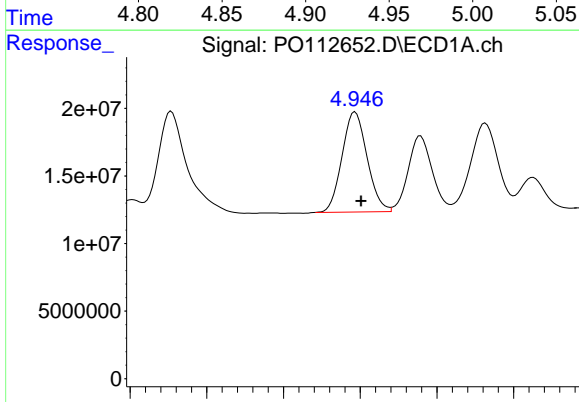
R.T.: 4.827 min
 Delta R.T.: -0.004 min
 Response: 104060775
 Conc: 439.71 ng/ml

Instrument :
 ECD_O
 ClientSampleId :
 AR1242CCC500



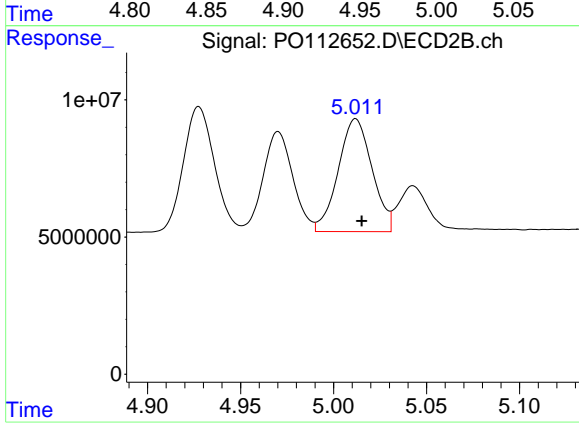
#18 AR-1242-3

R.T.: 4.928 min
 Delta R.T.: -0.003 min
 Response: 52288378
 Conc: 431.46 ng/ml



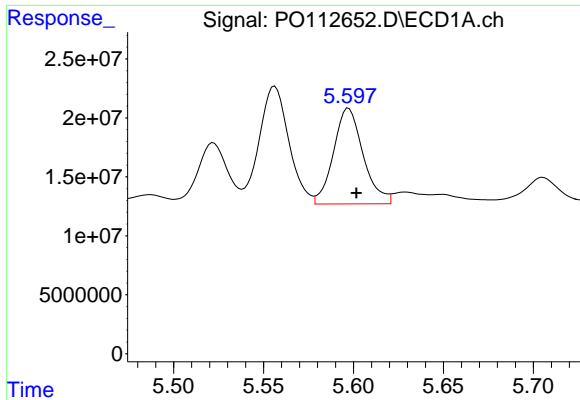
#19 AR-1242-4

R.T.: 4.947 min
 Delta R.T.: -0.004 min
 Response: 84442336
 Conc: 434.65 ng/ml



#19 AR-1242-4

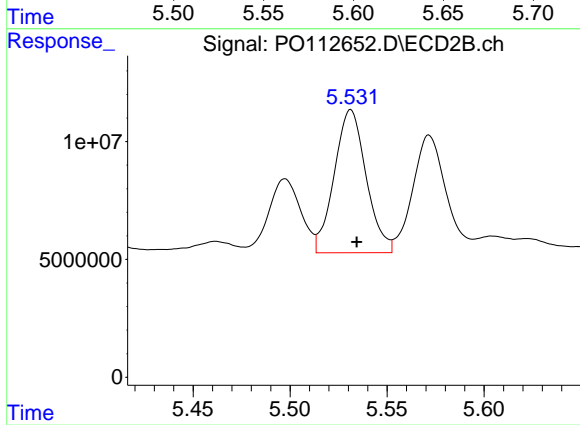
R.T.: 5.012 min
 Delta R.T.: -0.003 min
 Response: 52065660
 Conc: 424.20 ng/ml



#20 AR-1242-5

R.T.: 5.597 min
Delta R.T.: -0.004 min
Response: 93380986
Conc: 436.53 ng/ml

Instrument :
ECD_O
ClientSampleId :
AR1242CCC500



#20 AR-1242-5

R.T.: 5.531 min
Delta R.T.: -0.003 min
Response: 69674448
Conc: 432.84 ng/ml