

Data Path : Z:\pestpcbsrv\HPCHEM1\ECD\_0\Data\P0073125\  
 Data File : PO112654.D  
 Signal(s) : Signal #1: ECD1A.ch Signal #2: ECD2B.ch  
 Acq On : 31 Jul 2025 18:41  
 Operator : YP/AJ  
 Sample : AR1254CCC500  
 Misc :  
 ALS Vial : 6 Sample Multiplier: 1

Instrument :  
 ECD\_0  
 ClientSampleId :  
 AR1254CCC500

Integration File signal 1: autoint1.e  
 Integration File signal 2: autoint2.e  
 Quant Time: Jul 31 23:11:39 2025  
 Quant Method : Z:\pestpcbsrv\HPCHEM1\ECD\_0\methods\P0072325.M  
 Quant Title : GC EXTRACTABLES  
 QLast Update : Thu Jul 24 04:54:06 2025  
 Response via : Initial Calibration  
 Integrator: ChemStation

Volume Inj. : 2 µl  
 Signal #1 Phase : ZB-MR1 Signal #2 Phase: ZB-MR2  
 Signal #1 Info : 30Mx0.32mmx 0.50µ Signal #2 Info : 30M x 0.32mm x 0.25µm

| Compound                    | RT#1  | RT#2  | Resp#1  | Resp#2   | ng/ml   | ng/ml   |
|-----------------------------|-------|-------|---------|----------|---------|---------|
| -----                       |       |       |         |          |         |         |
| System Monitoring Compounds |       |       |         |          |         |         |
| 1) SA Tetrachlo...          | 3.669 | 3.661 | 385.9E6 | 224.5E6  | 47.454  | 45.175  |
| 2) SA Decachlor...          | 8.691 | 8.636 | 350.0E6 | 83608509 | 47.866  | 47.314  |
| Target Compounds            |       |       |         |          |         |         |
| 26) L6 AR-1254-1            | 5.559 | 5.532 | 275.2E6 | 151.9E6  | 501.290 | 462.342 |
| 27) L6 AR-1254-2            | 5.708 | 5.680 | 245.3E6 | 133.1E6  | 504.829 | 459.658 |
| 28) L6 AR-1254-3            | 6.111 | 6.081 | 339.6E6 | 192.0E6  | 456.264 | 449.117 |
| 29) L6 AR-1254-4            | 6.341 | 6.308 | 254.3E6 | 122.9E6  | 462.562 | 450.252 |
| 30) L6 AR-1254-5            | 6.759 | 6.724 | 348.6E6 | 152.9E6  | 492.559 | 457.792 |
| -----                       |       |       |         |          |         |         |

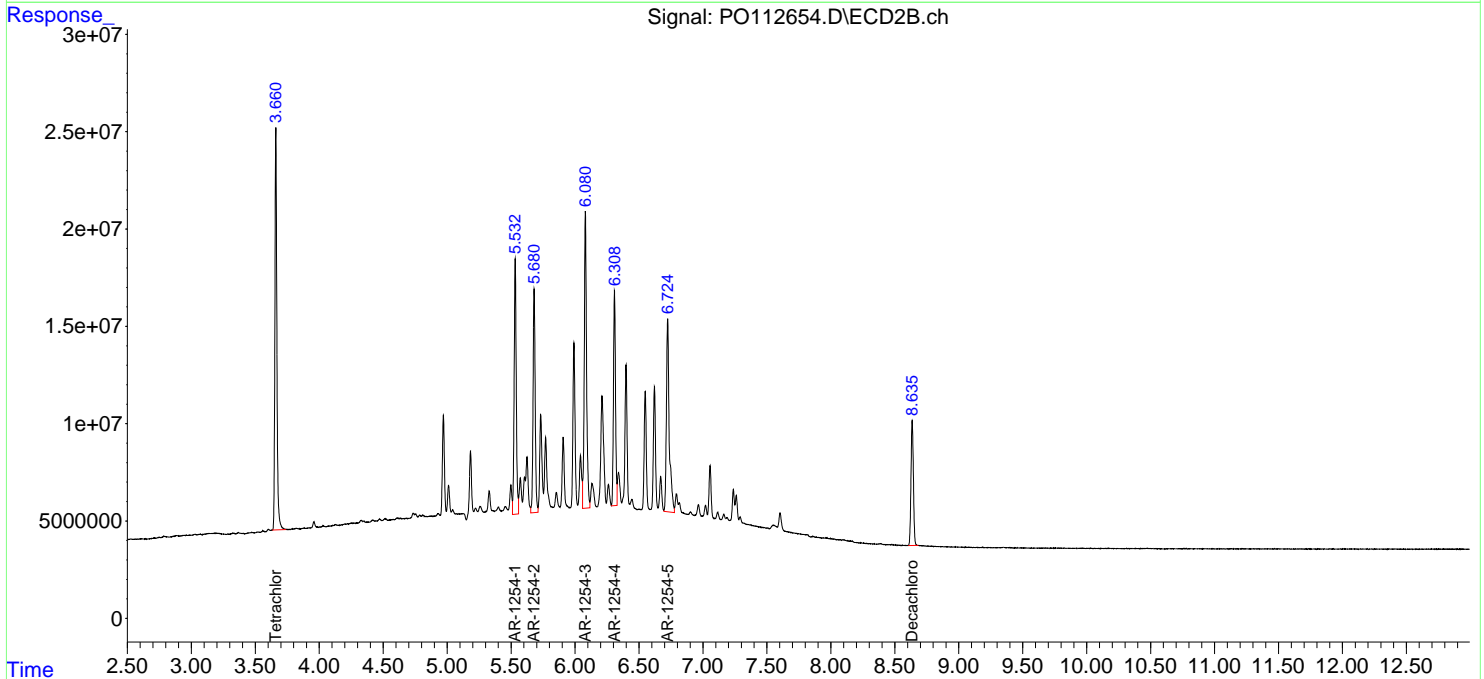
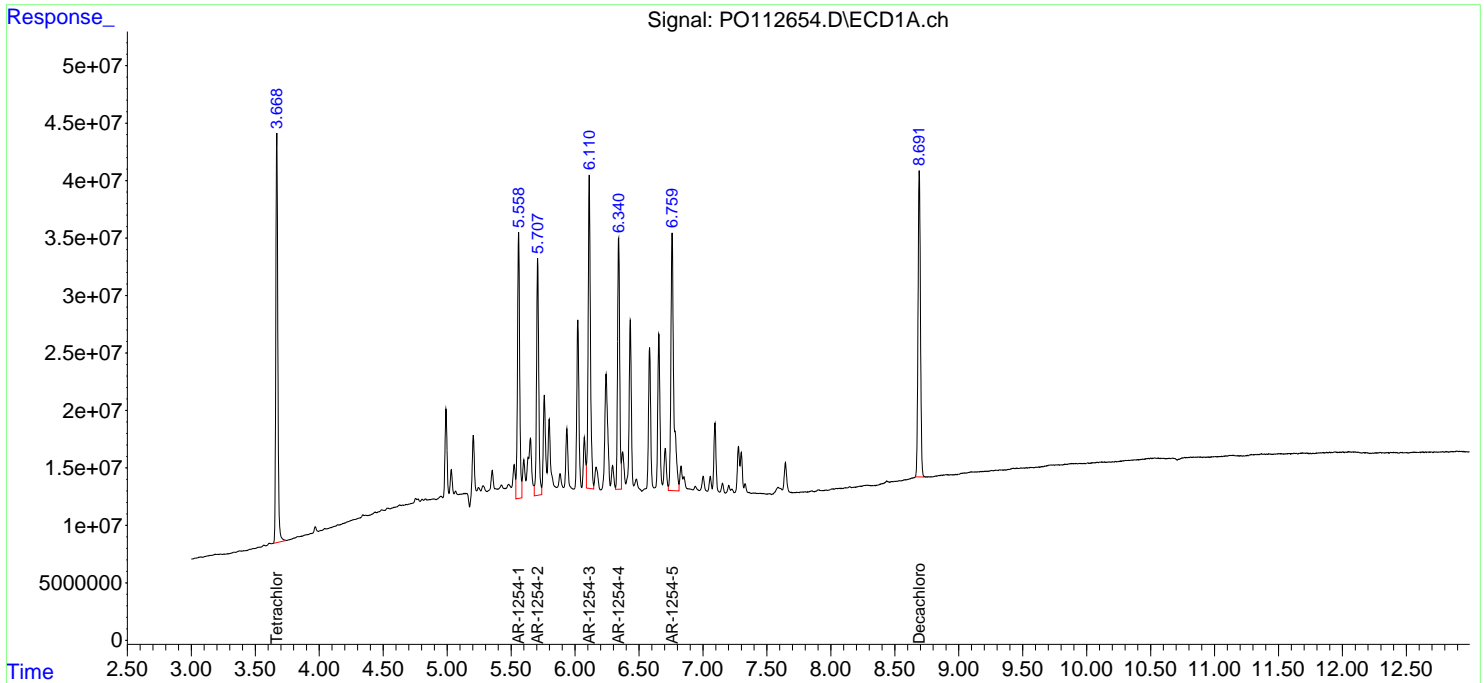
(f)=RT Delta > 1/2 Window (#)=Amounts differ by > 25% (m)=manual int.

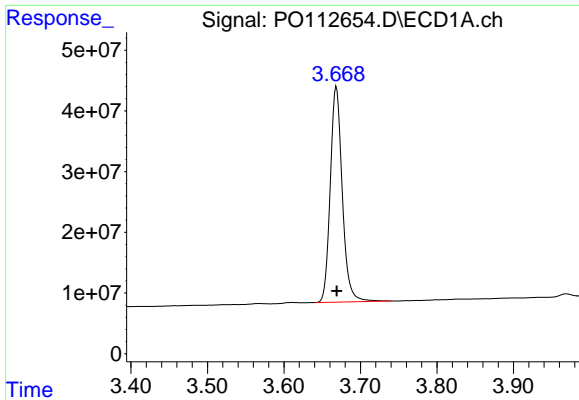
Data Path : Z:\pestpcbsrv\HPCHEM1\ECD\_O\Data\PO073125\  
 Data File : PO112654.D  
 Signal(s) : Signal #1: ECD1A.ch Signal #2: ECD2B.ch  
 Acq On : 31 Jul 2025 18:41  
 Operator : YP/AJ  
 Sample : AR1254CCC500  
 Misc :  
 ALS Vial : 6 Sample Multiplier: 1

Instrument :  
 ECD\_O  
 ClientSampleId :  
 AR1254CCC500

Integration File signal 1: autoint1.e  
 Integration File signal 2: autoint2.e  
 Quant Time: Jul 31 23:11:39 2025  
 Quant Method : Z:\pestpcbsrv\HPCHEM1\ECD\_O\methods\PO072325.M  
 Quant Title : GC EXTRACTABLES  
 QLast Update : Thu Jul 24 04:54:06 2025  
 Response via : Initial Calibration  
 Integrator: ChemStation

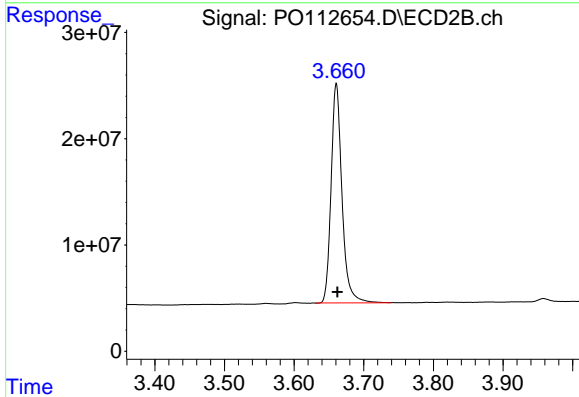
Volume Inj. : 2 µl  
 Signal #1 Phase : ZB-MR1 Signal #2 Phase: ZB-MR2  
 Signal #1 Info : 30Mx0.32mmx 0.50µm Signal #2 Info : 30M x 0.32mm x 0.25µm



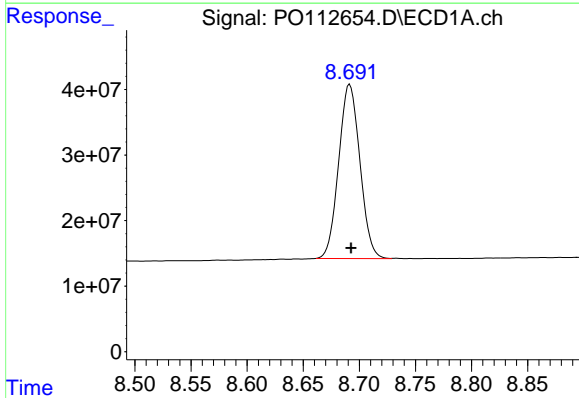


#1 Tetrachloro-m-xylene  
 R.T.: 3.669 min  
 Delta R.T.: 0.000 min  
 Response: 385877523  
 Conc: 47.45 ng/ml

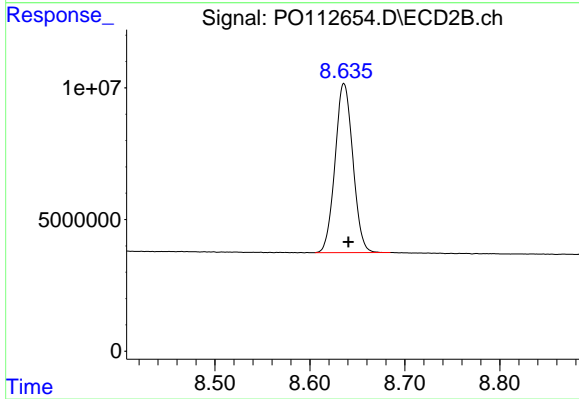
Instrument :  
 ECD\_O  
 ClientSampleId :  
 AR1254CCC500



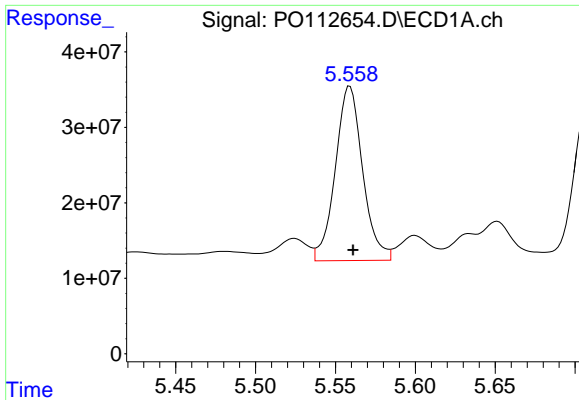
#1 Tetrachloro-m-xylene  
 R.T.: 3.661 min  
 Delta R.T.: -0.002 min  
 Response: 224482666  
 Conc: 45.18 ng/ml



#2 Decachlorobiphenyl  
 R.T.: 8.691 min  
 Delta R.T.: -0.001 min  
 Response: 349989403  
 Conc: 47.87 ng/ml



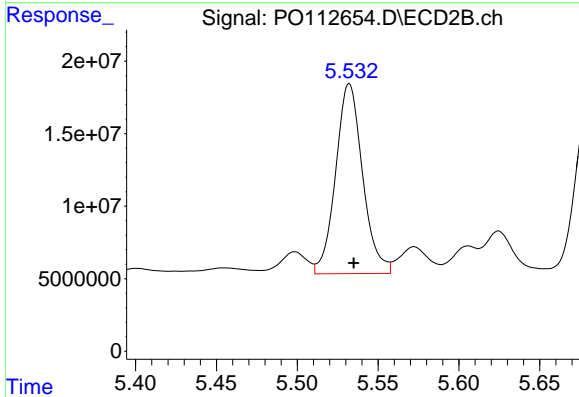
#2 Decachlorobiphenyl  
 R.T.: 8.636 min  
 Delta R.T.: -0.005 min  
 Response: 83608509  
 Conc: 47.31 ng/ml



#26 AR-1254-1

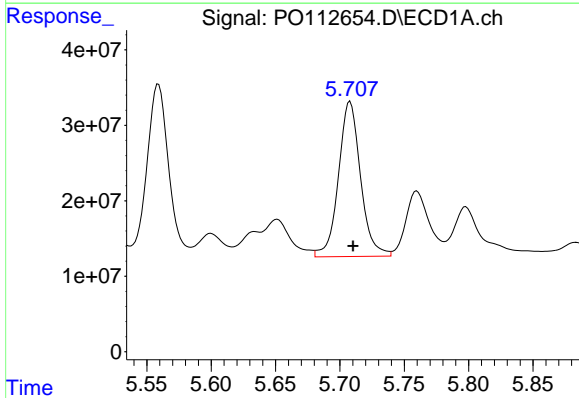
R.T.: 5.559 min  
Delta R.T.: -0.002 min  
Response: 275187650  
Conc: 501.29 ng/ml

Instrument :  
ECD\_O  
ClientSampleId :  
AR1254CCC500



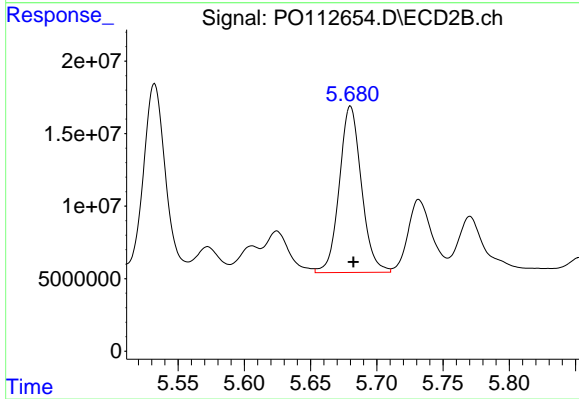
#26 AR-1254-1

R.T.: 5.532 min  
Delta R.T.: -0.003 min  
Response: 151935362  
Conc: 462.34 ng/ml



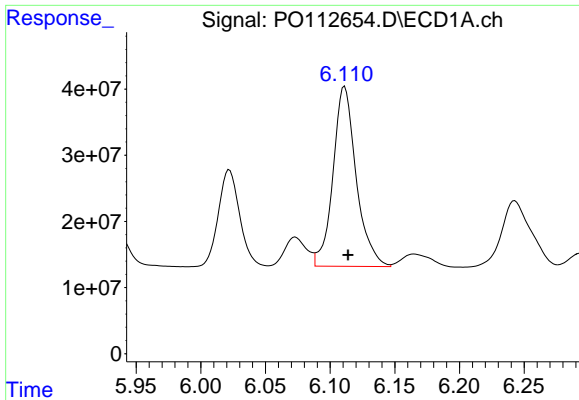
#27 AR-1254-2

R.T.: 5.708 min  
Delta R.T.: -0.002 min  
Response: 245306036  
Conc: 504.83 ng/ml



#27 AR-1254-2

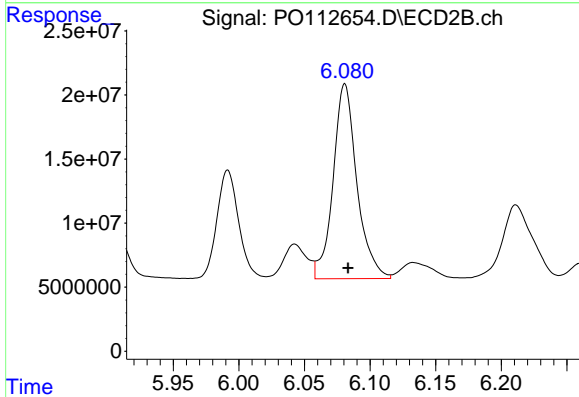
R.T.: 5.680 min  
Delta R.T.: -0.002 min  
Response: 133066832  
Conc: 459.66 ng/ml



#28 AR-1254-3

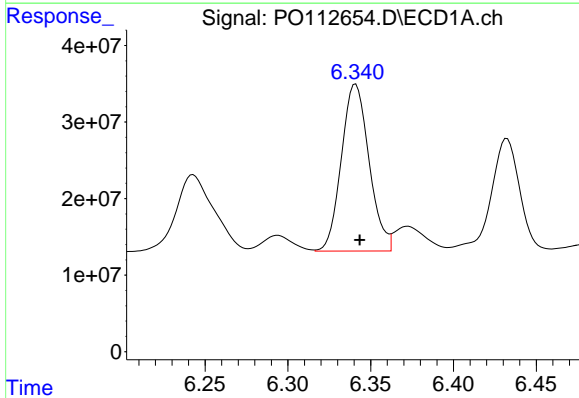
R.T.: 6.111 min  
 Delta R.T.: -0.002 min  
 Response: 339590934  
 Conc: 456.26 ng/ml

Instrument :  
 ECD\_O  
 ClientSampleId :  
 AR1254CCC500



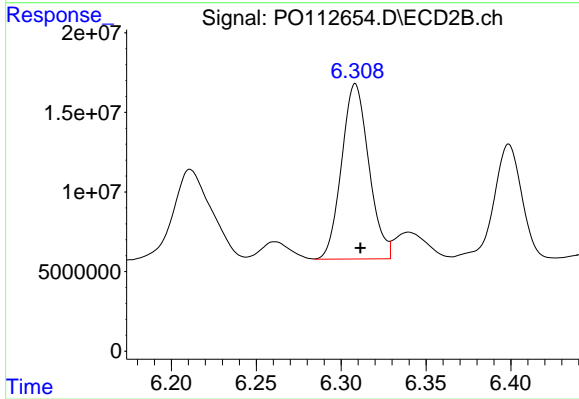
#28 AR-1254-3

R.T.: 6.081 min  
 Delta R.T.: -0.003 min  
 Response: 191980295  
 Conc: 449.12 ng/ml



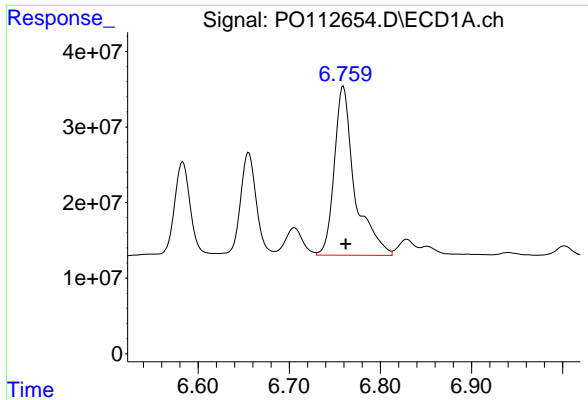
#29 AR-1254-4

R.T.: 6.341 min  
 Delta R.T.: -0.002 min  
 Response: 254272201  
 Conc: 462.56 ng/ml



#29 AR-1254-4

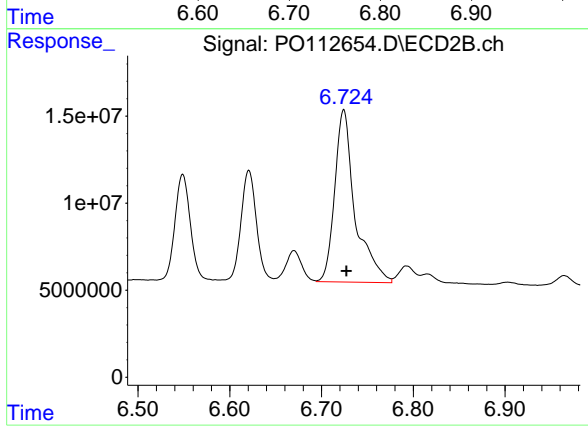
R.T.: 6.308 min  
 Delta R.T.: -0.003 min  
 Response: 122902073  
 Conc: 450.25 ng/ml



#30 AR-1254-5

R.T.: 6.759 min  
Delta R.T.: -0.003 min  
Response: 348644863  
Conc: 492.56 ng/ml

Instrument :  
ECD\_O  
ClientSampleId :  
AR1254CCC500



#30 AR-1254-5

R.T.: 6.724 min  
Delta R.T.: -0.003 min  
Response: 152911536  
Conc: 457.79 ng/ml