

Data Path : Z:\pestpcbsrv\HPCHEM1\ECD_O\Data\PO080118\
 Data File : PO047517.D
 Signal(s) : Signal #1: ECD1A.CH Signal #2: ECD2B.CH
 Acq On : 01 Aug 2018 15:32
 Operator : SM/SJ
 Sample : J4049-02
 Misc :
 ALS Vial : 6 Sample Multiplier: 1

Instrument :
 ECD_O
 ClientSampleId :
 OK-02-021218

Integration File signal 1: autoint1.e
 Integration File signal 2: autoint2.e
 Quant Time: Aug 01 15:45:32 2018
 Quant Method : Z:\pestpcbsrv\HPCHEM1\ECD_O\methods\PO072718.M
 Quant Title : GC EXTRACTABLES
 QLast Update : Fri Jul 27 02:33:29 2018
 Response via : Initial Calibration
 Integrator: ChemStation 6890 Scale Mode: Small noise peaks clipped

Volume Inj. : 2 µl
 Signal #1 Phase : ZB-MR1 Signal #2 Phase: ZB-MR2
 Signal #1 Info : 30Mx0.32mmx 0.50µ Signal #2 Info : 30M x 0.32mm x 0.25µm

Compound	RT#1	RT#2	Resp#1	Resp#2	ng/ml	ng/ml

System Monitoring Compounds						
1) SA Tetrachlo...	4.400	3.644	2949753	3403213	14.610	13.850
2) SA Decachlor...	10.094	8.634	2372065	2453696	14.544	15.610
Target Compounds						
3) L1 AR-1016-1	5.301	4.508	458460	701364	95.983	122.680 #
4) L1 AR-1016-2	5.651	4.922	799948	447126	135.883	85.158 #
5) L1 AR-1016-3	5.750	4.962	580066	1550930	116.966	353.218 #
6) L1 AR-1016-4	6.043	5.004	1173863	881422	252.370	169.980 #
7) L1 AR-1016-5	6.184	5.176	890598	1340041	170.842	228.459 #
8) L2 AR-1221-1	4.599	3.855	25807	-7455	11.670	N.D. #
9) L2 AR-1221-2	4.699	3.943	122576	96395	74.961	53.138 #
10) L2 AR-1221-3	4.772	4.019	283998	257446	55.008	44.536
11) L3 AR-1232-1	5.107	4.316	418363	722783	194.540	307.341 #
12) L3 AR-1232-2	5.567	4.727	680184	702018	231.161	229.726
13) L3 AR-1232-3	5.590	4.746	920132	907022	214.172	196.419
14) L3 AR-1232-4	5.651	4.801	799948	713373	289.011	230.762
15) L3 AR-1232-5	5.750	4.962	580066	1550930	259.755	866.577 #
16) L4 AR-1242-1	5.590	4.746	920132	907022	125.187	113.261
17) L4 AR-1242-2	5.651	4.922	799948	447126	172.837	108.534 #
18) L4 AR-1242-3	5.750	5.004	580066	881422	150.979	210.172 #
19) L4 AR-1242-4	6.043	5.176	1173863	1340041	305.356	283.773
20) L4 AR-1242-5	6.184	5.324	890598	1074880	208.056	277.625 #
21) L5 AR-1248-1	6.043	5.176	1173863	1340041	187.725	179.625
22) L5 AR-1248-2	6.184	5.324	890598	1074880	163.485	200.913
23) L5 AR-1248-3	6.447	5.527	3653004	8424472	519.089	846.644 #
24) L5 AR-1248-4	6.485	5.567	2651674	2437380	394.991	347.792
25) L5 AR-1248-5	6.638	6.076	9469363	18163888	1337.923	3811.322 #
26) L6 AR-1254-1	6.638	5.527	9469363	8424472	774.344	684.637
27) L6 AR-1254-2	6.917	5.672	5780697	7957001	775.120	764.380
28) L6 AR-1254-3	7.003	6.076	11365166	18163888	871.469	1046.586
29) L6 AR-1254-4	7.288	6.302	12384940	16692589	1270.721	1540.571
30) L6 AR-1254-5	7.559	6.617	15168665	13408692	2053.208	1753.307
31) L7 AR-1260-1	7.165	6.205	9372478	13560757	999.509	1227.211
32) L7 AR-1260-2	7.422	6.390	13402824	14847583	1201.918	1107.364
33) L7 AR-1260-3	7.705	6.719	20521272	24914644	1594.989	1713.778
34) L7 AR-1260-4	8.321	7.255	15916856	25115022	894.818	1141.401 #
35) L7 AR-1260-5	8.643	7.601	10483703	14827506	918.059	950.503
36) L8 AR-1262-1	7.165	6.390	9372478	14847583	1131.326	1309.538
37) L8 AR-1262-2	7.422	6.545	13402824	13811307	1382.921	1223.915
38) L8 AR-1262-3	7.779	6.755	6300873	9146930	513.420	606.075

Data Path : Z:\pestpcbsrv\HPCHEM1\ECD_O\Data\PO080118\
 Data File : PO047517.D
 Signal(s) : Signal #1: ECD1A.CH Signal #2: ECD2B.CH
 Acq On : 01 Aug 2018 15:32
 Operator : SM/SJ
 Sample : J4049-02
 Misc :
 ALS Vial : 6 Sample Multiplier: 1

Instrument :
 ECD_O
 ClientSampleId :
 OK-02-021218

Integration File signal 1: autoint1.e
 Integration File signal 2: autoint2.e
 Quant Time: Aug 01 15:45:32 2018
 Quant Method : Z:\pestpcbsrv\HPCHEM1\ECD_O\methods\PO072718.M
 Quant Title : GC EXTRACTABLES
 QLast Update : Fri Jul 27 02:33:29 2018
 Response via : Initial Calibration
 Integrator: ChemStation 6890 Scale Mode: Small noise peaks clipped

Volume Inj. : 2 µl
 Signal #1 Phase : ZB-MR1 Signal #2 Phase: ZB-MR2
 Signal #1 Info : 30Mx0.32mmx 0.50µ Signal #2 Info : 30M x 0.32mm x 0.25µm

	Compound	RT#1	RT#2	Resp#1	Resp#2	ng/ml	ng/ml	
39)	L8 AR-1262-4	8.000	7.015	11951729	7311098	1014.946	555.206	#
40)	L8 AR-1262-5	8.321	7.255	15916856	25115022	740.815	972.371	#
41)	L9 AR-1268-1	8.643	7.538	10483703	3432624	451.701	132.027	#
42)	L9 AR-1268-2	8.694	7.601	5578057	14827506	260.334	595.177	#
43)	L9 AR-1268-3	8.939	7.809	126232	254962	6.992	12.919	#
44)	L9 AR-1268-4	9.359	8.094	3883505	4160005	487.027	495.915	
45)	L9 AR-1268-5	9.763	8.381	897070	973189	16.464	17.824	

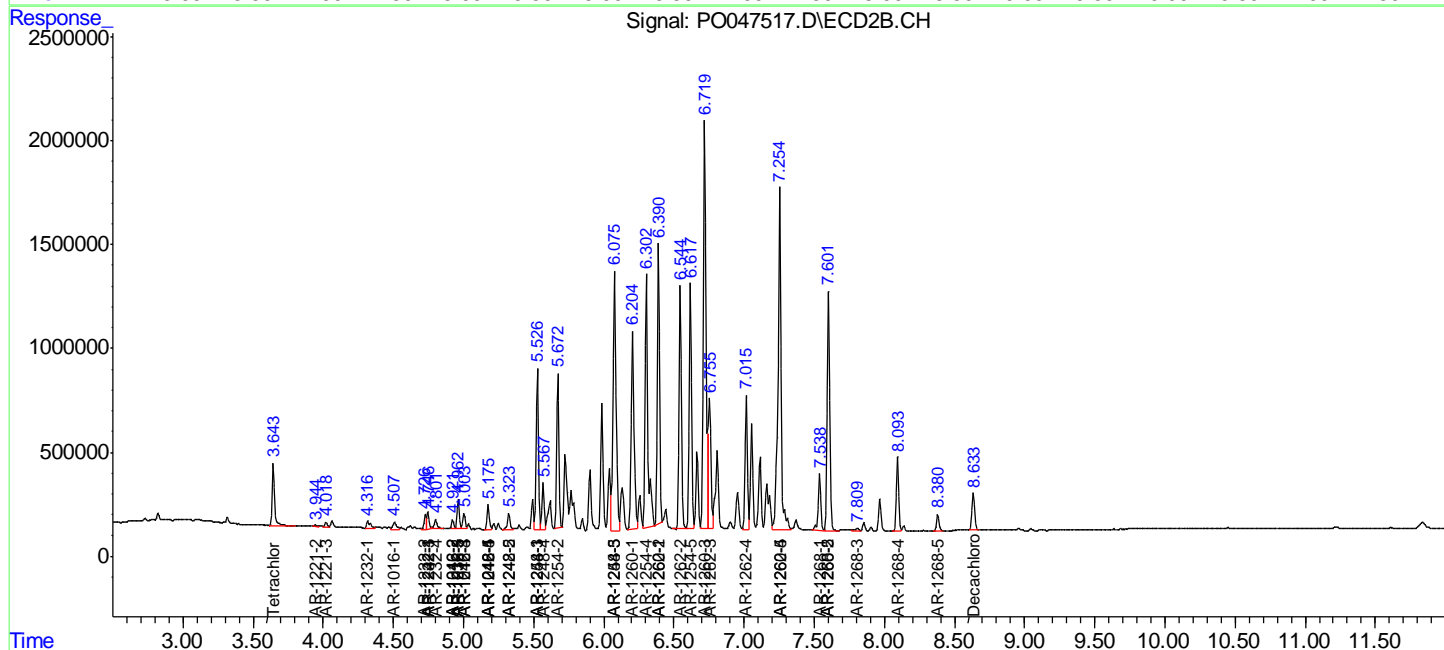
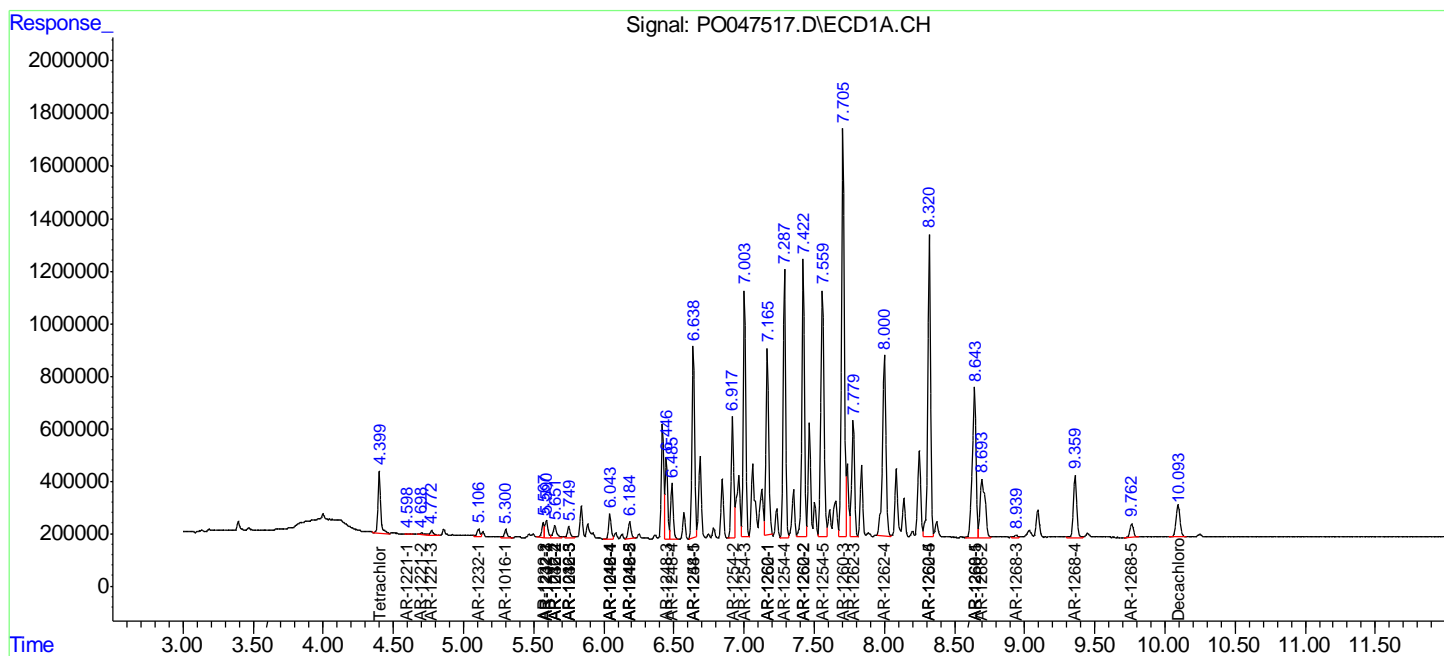
(f)=RT Delta > 1/2 Window (#)=Amounts differ by > 25% (m)=manual int.

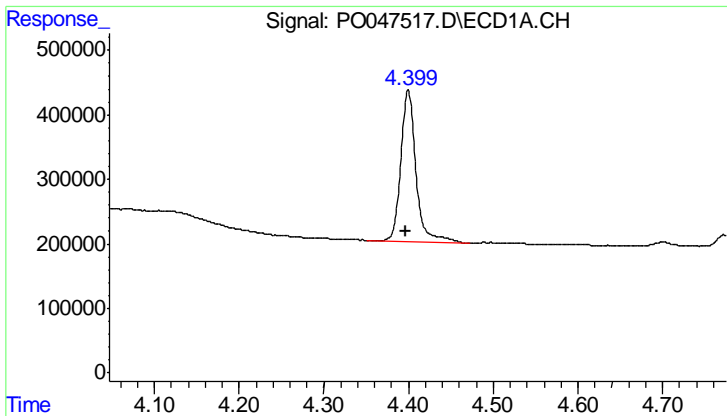
Data Path : Z:\pestpcbsrv\HPCHEM1\ECD_O\Data\PO080118\
 Data File : PO047517.D
 Signal(s) : Signal #1: ECD1A.CH Signal #2: ECD2B.CH
 Acq On : 01 Aug 2018 15:32
 Operator : SM/SJ
 Sample : J4049-02
 Misc :
 ALS Vial : 6 Sample Multiplier: 1

Instrument :
 ECD_O
 ClientSampleId :
 OK-02-021218

Integration File signal 1: autoint1.e
 Integration File signal 2: autoint2.e
 Quant Time: Aug 01 15:45:32 2018
 Quant Method : Z:\pestpcbsrv\HPCHEM1\ECD_O\methods\PO072718.M
 Quant Title : GC EXTRACTABLES
 QLast Update : Fri Jul 27 02:33:29 2018
 Response via : Initial Calibration
 Integrator: ChemStation 6890 Scale Mode: Small noise peaks clipped

Volume Inj. : 2 µl
 Signal #1 Phase : ZB-MR1 Signal #2 Phase: ZB-MR2
 Signal #1 Info : 30Mx0.32mmx 0.50µ Signal #2 Info : 30M x 0.32mm x 0.25µm

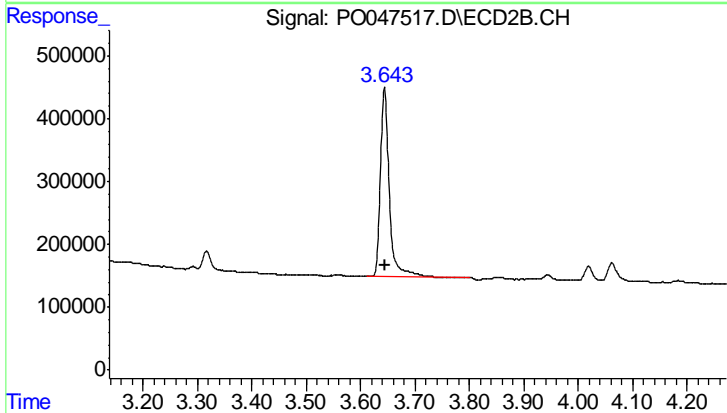




#1 Tetrachloro-m-xylene

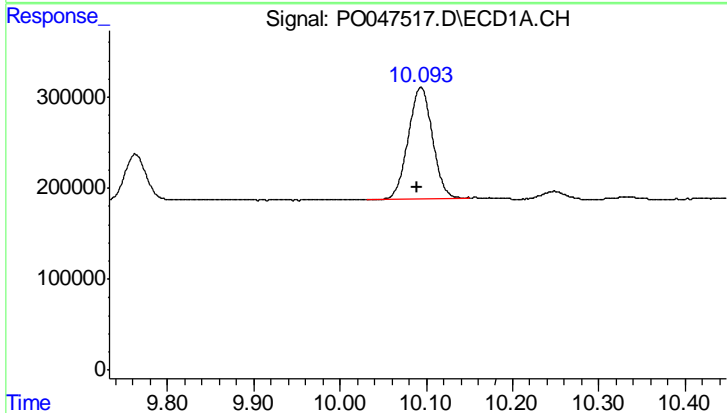
R.T.: 4.400 min
 Delta R.T.: 0.002 min
 Response: 2949753
 Conc: 14.61 ng/ml

Instrument :
 ECD_O
 ClientSampleId :
 OK-02-021218



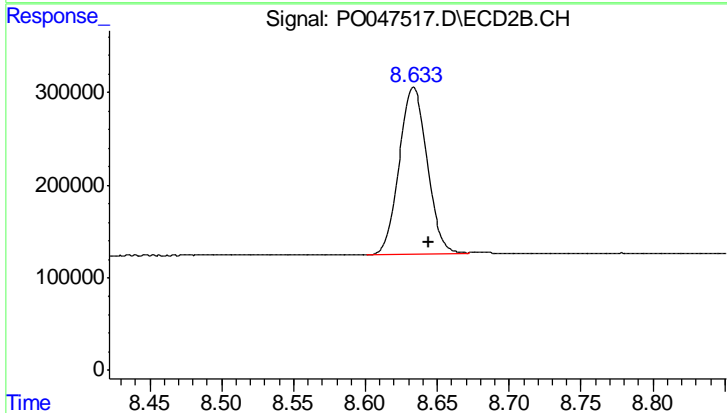
#1 Tetrachloro-m-xylene

R.T.: 3.644 min
 Delta R.T.: -0.002 min
 Response: 3403213
 Conc: 13.85 ng/ml



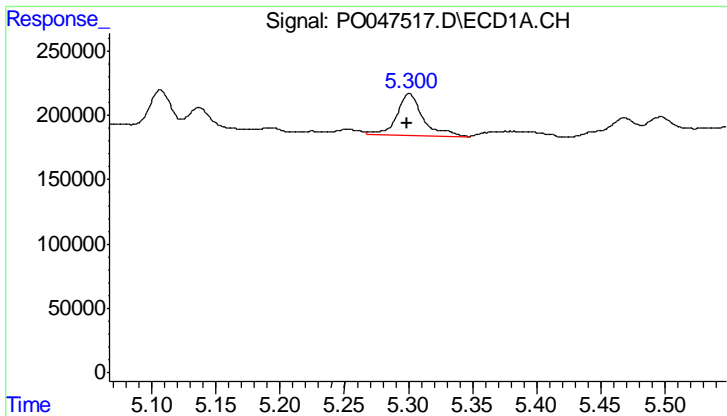
#2 Decachlorobiphenyl

R.T.: 10.094 min
 Delta R.T.: 0.004 min
 Response: 2372065
 Conc: 14.54 ng/ml



#2 Decachlorobiphenyl

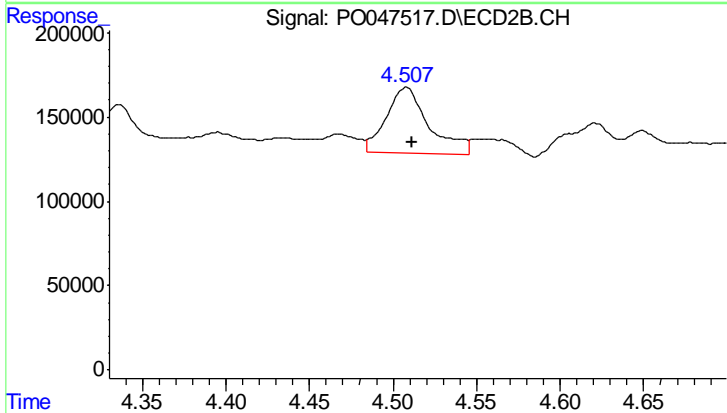
R.T.: 8.634 min
 Delta R.T.: -0.011 min
 Response: 2453696
 Conc: 15.61 ng/ml



#3 AR-1016-1

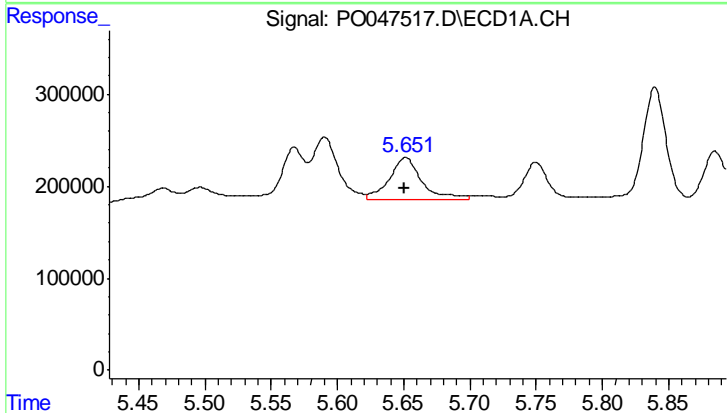
R.T.: 5.301 min
 Delta R.T.: 0.001 min
 Response: 458460
 Conc: 95.98 ng/ml

Instrument :
 ECD_O
 ClientSampleId :
 OK-02-021218



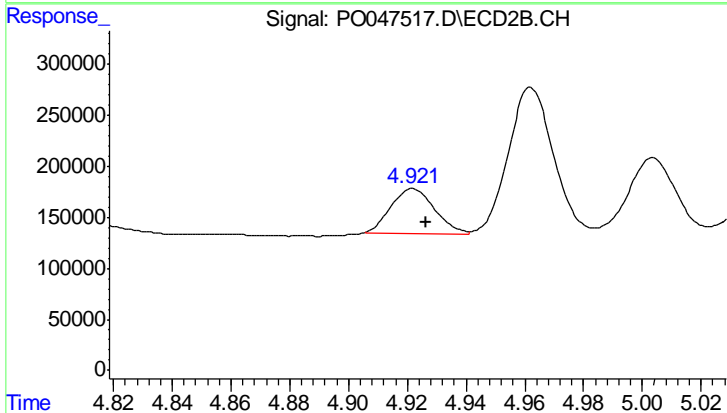
#3 AR-1016-1

R.T.: 4.508 min
 Delta R.T.: -0.003 min
 Response: 701364
 Conc: 122.68 ng/ml



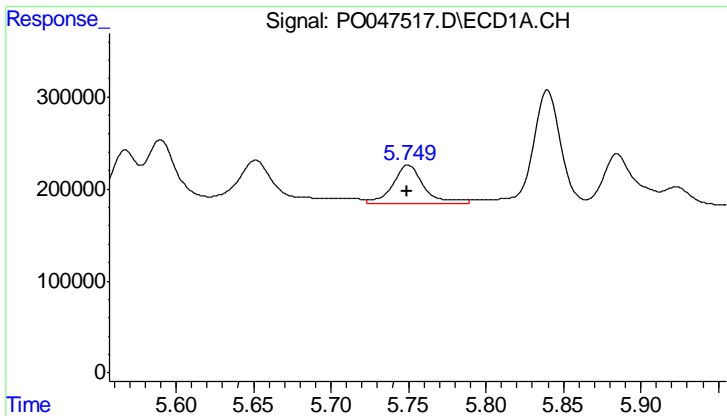
#4 AR-1016-2

R.T.: 5.651 min
 Delta R.T.: 0.000 min
 Response: 799948
 Conc: 135.88 ng/ml



#4 AR-1016-2

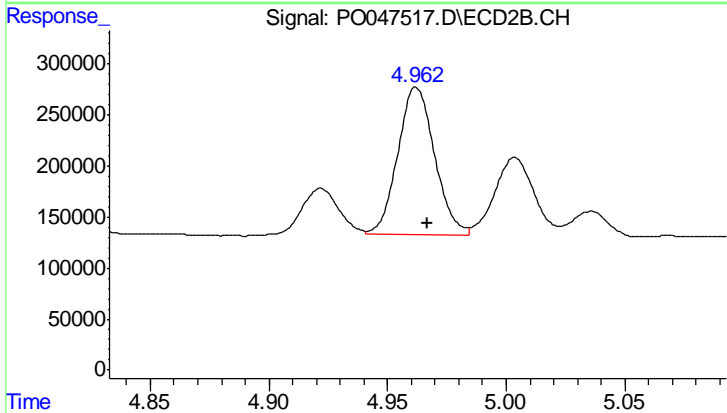
R.T.: 4.922 min
 Delta R.T.: -0.004 min
 Response: 447126
 Conc: 85.16 ng/ml



#5 AR-1016-3

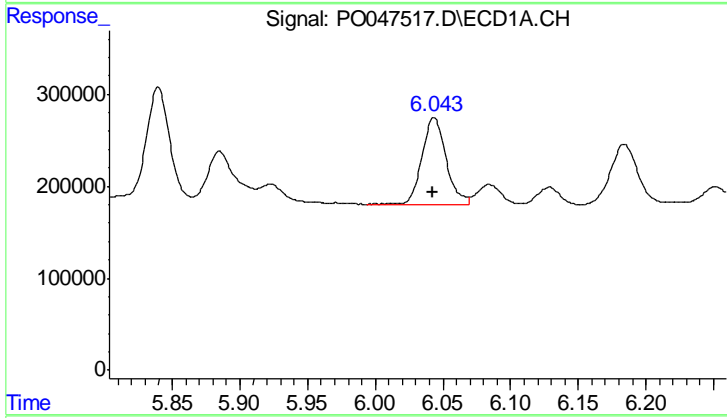
R.T.: 5.750 min
 Delta R.T.: 0.000 min
 Response: 580066
 Conc: 116.97 ng/ml

Instrument :
 ECD_O
 ClientSampled :
 OK-02-021218



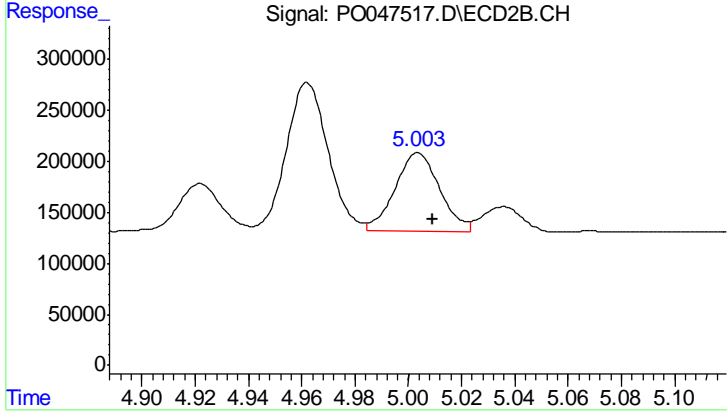
#5 AR-1016-3

R.T.: 4.962 min
 Delta R.T.: -0.005 min
 Response: 1550930
 Conc: 353.22 ng/ml



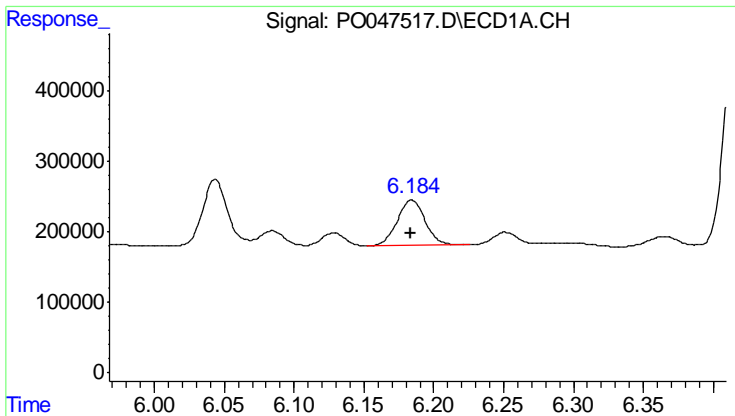
#6 AR-1016-4

R.T.: 6.043 min
 Delta R.T.: 0.001 min
 Response: 1173863
 Conc: 252.37 ng/ml



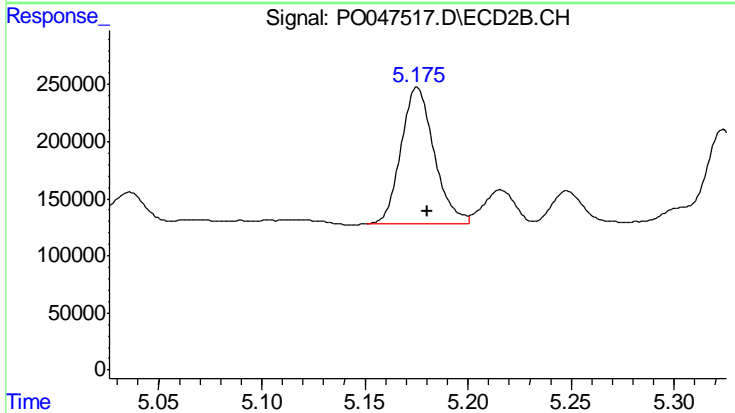
#6 AR-1016-4

R.T.: 5.004 min
 Delta R.T.: -0.005 min
 Response: 881422
 Conc: 169.98 ng/ml

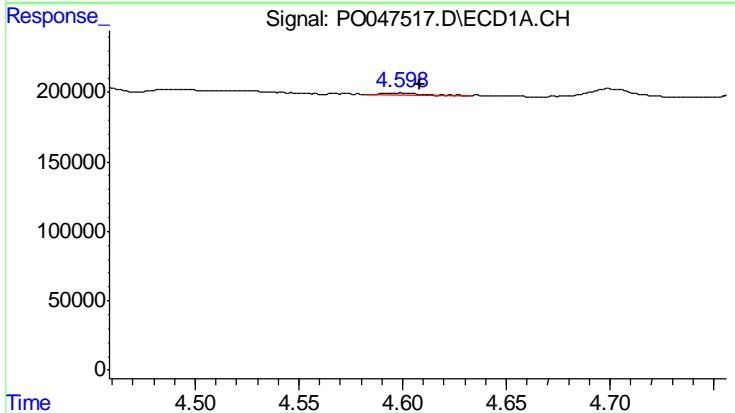


#7 AR-1016-5
 R.T.: 6.184 min
 Delta R.T.: 0.000 min
 Response: 890598
 Conc: 170.84 ng/ml

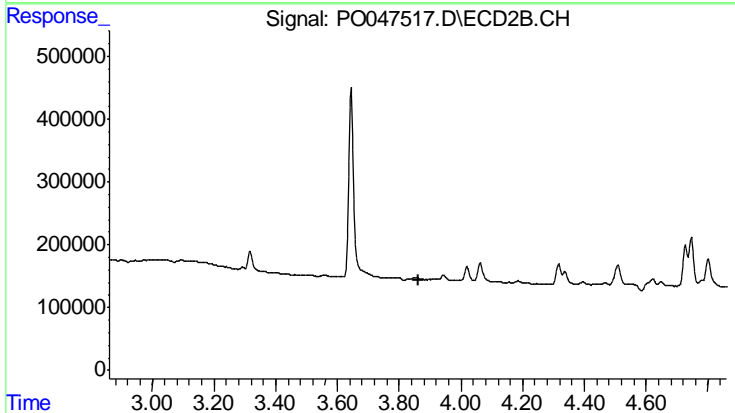
Instrument :
 ECD_O
 ClientSampled :
 OK-02-021218



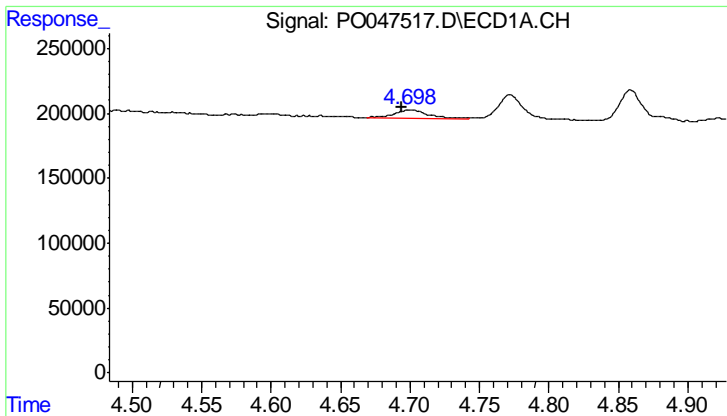
#7 AR-1016-5
 R.T.: 5.176 min
 Delta R.T.: -0.005 min
 Response: 1340041
 Conc: 228.46 ng/ml



#8 AR-1221-1
 R.T.: 4.599 min
 Delta R.T.: -0.010 min
 Response: 25807
 Conc: 11.67 ng/ml



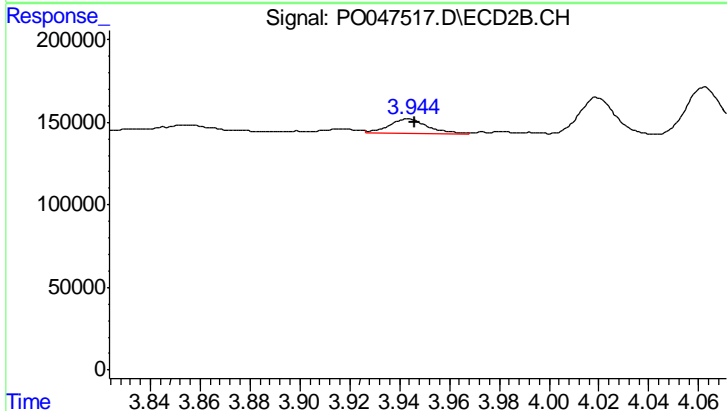
#8 AR-1221-1
 R.T.: 3.855 min
 Delta R.T.: -0.006 min
 Response: -7455
 Conc: N.D.



#9 AR-1221-2

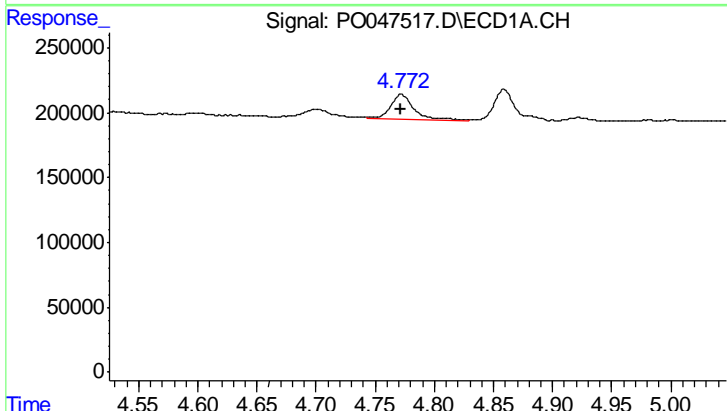
R.T.: 4.699 min
 Delta R.T.: 0.005 min
 Response: 122576
 Conc: 74.96 ng/ml

Instrument :
 ECD_O
 ClientSampleId :
 OK-02-021218



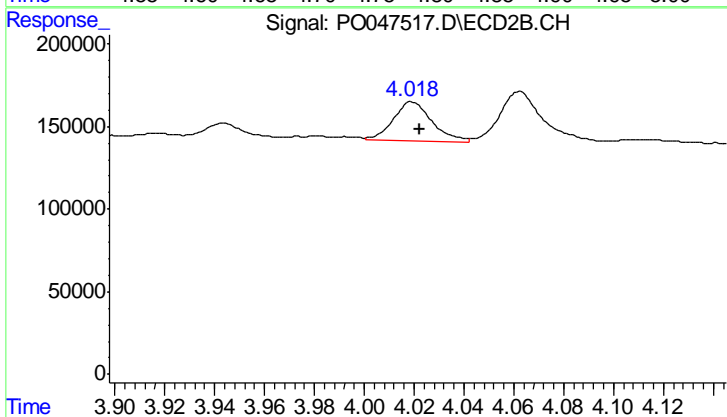
#9 AR-1221-2

R.T.: 3.943 min
 Delta R.T.: -0.002 min
 Response: 96395
 Conc: 53.14 ng/ml



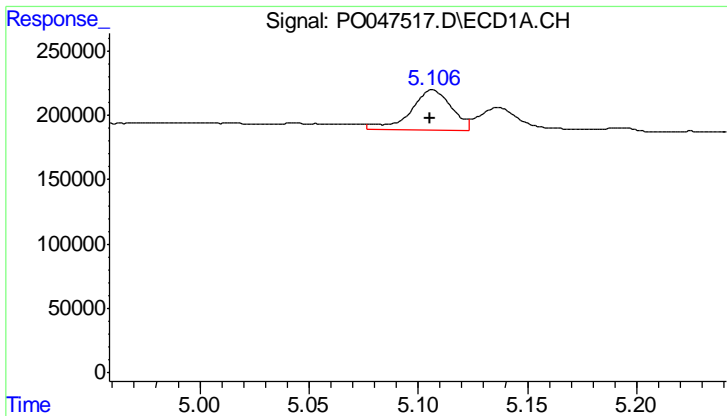
#10 AR-1221-3

R.T.: 4.772 min
 Delta R.T.: 0.000 min
 Response: 283998
 Conc: 55.01 ng/ml



#10 AR-1221-3

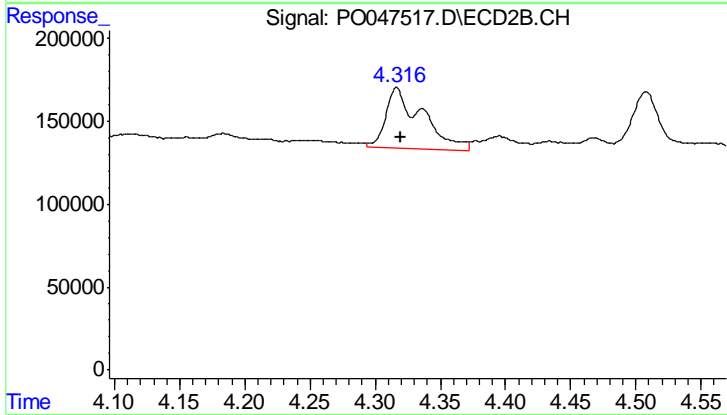
R.T.: 4.019 min
 Delta R.T.: -0.003 min
 Response: 257446
 Conc: 44.54 ng/ml



#11 AR-1232-1

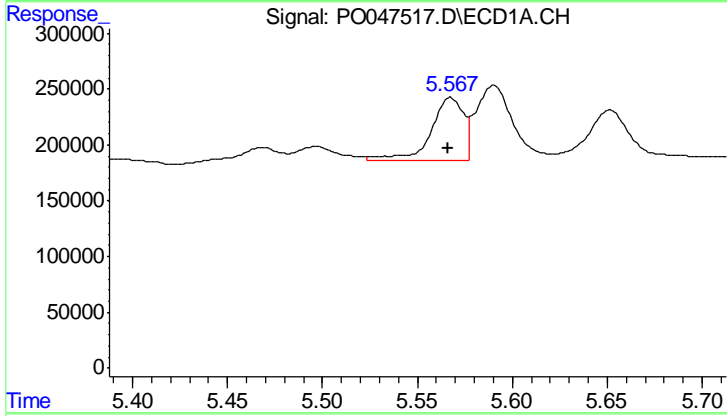
R.T.: 5.107 min
 Delta R.T.: 0.001 min
 Response: 418363
 Conc: 194.54 ng/ml

Instrument :
 ECD_O
 ClientSampleId :
 OK-02-021218



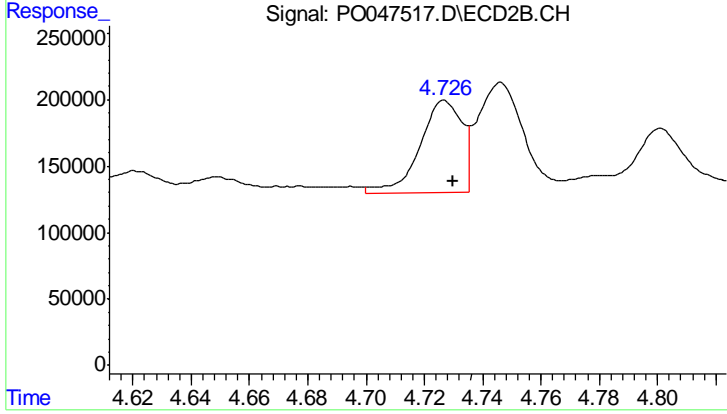
#11 AR-1232-1

R.T.: 4.316 min
 Delta R.T.: -0.003 min
 Response: 722783
 Conc: 307.34 ng/ml



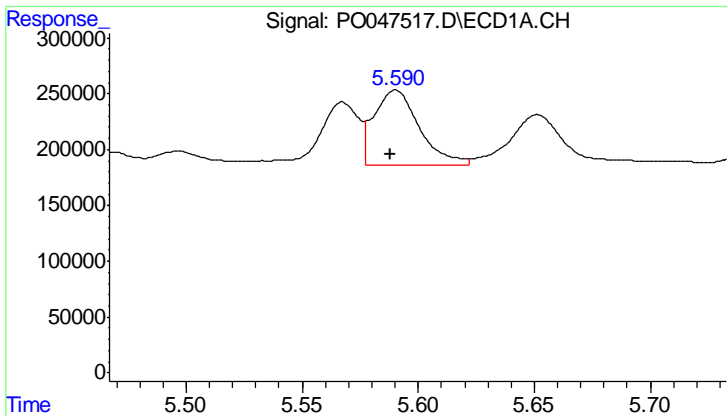
#12 AR-1232-2

R.T.: 5.567 min
 Delta R.T.: 0.002 min
 Response: 680184
 Conc: 231.16 ng/ml



#12 AR-1232-2

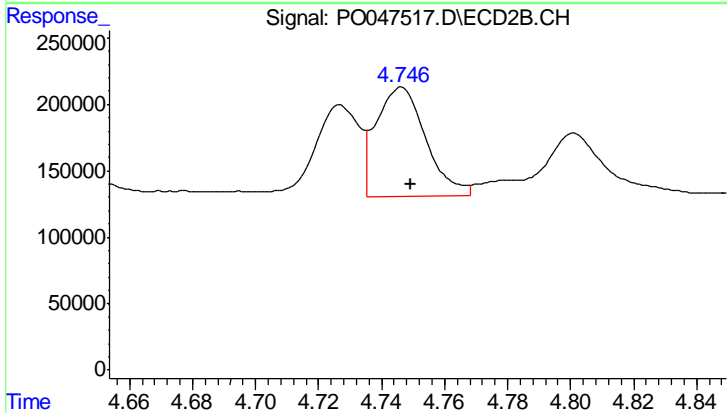
R.T.: 4.727 min
 Delta R.T.: -0.003 min
 Response: 702018
 Conc: 229.73 ng/ml



#13 AR-1232-3

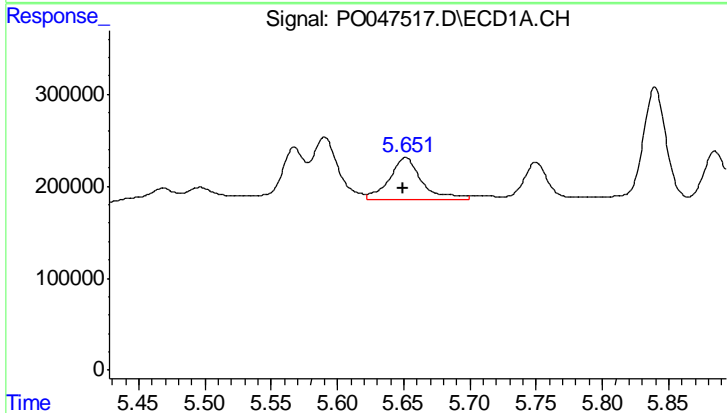
R.T.: 5.590 min
 Delta R.T.: 0.002 min
 Response: 920132
 Conc: 214.17 ng/ml

Instrument :
 ECD_O
 ClientSampled :
 OK-02-021218



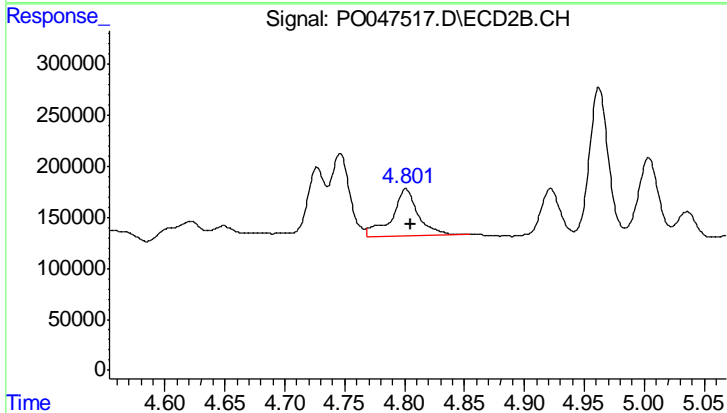
#13 AR-1232-3

R.T.: 4.746 min
 Delta R.T.: -0.003 min
 Response: 907022
 Conc: 196.42 ng/ml



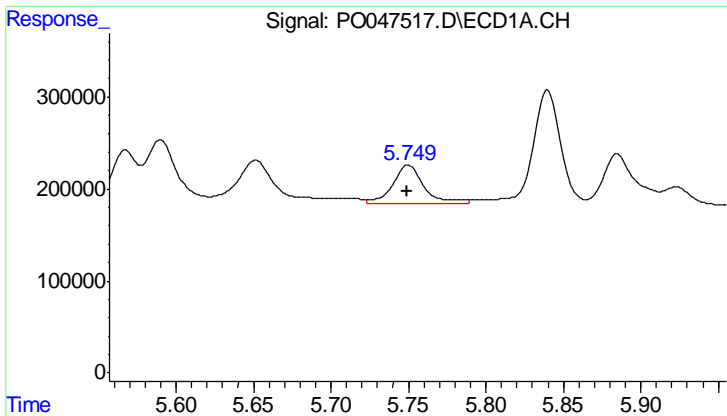
#14 AR-1232-4

R.T.: 5.651 min
 Delta R.T.: 0.002 min
 Response: 799948
 Conc: 289.01 ng/ml



#14 AR-1232-4

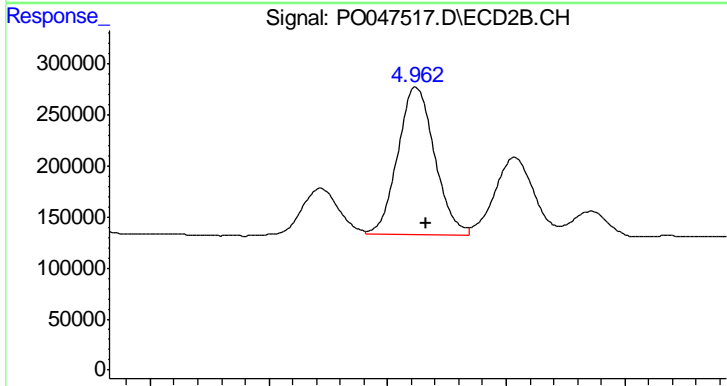
R.T.: 4.801 min
 Delta R.T.: -0.004 min
 Response: 713373
 Conc: 230.76 ng/ml



#15 AR-1232-5

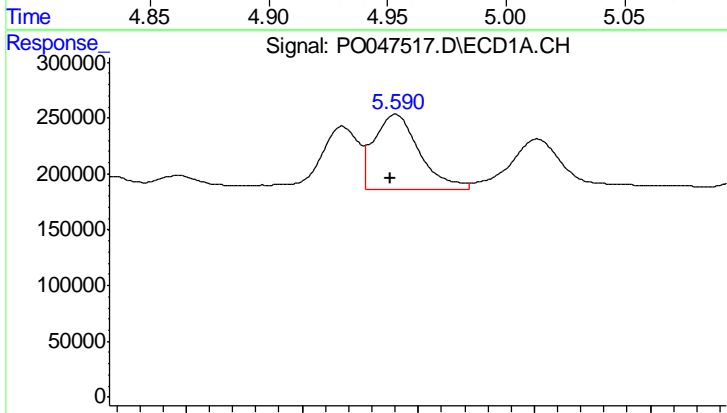
R.T.: 5.750 min
 Delta R.T.: 0.000 min
 Response: 580066
 Conc: 259.75 ng/ml

Instrument :
 ECD_O
 ClientSampled :
 OK-02-021218



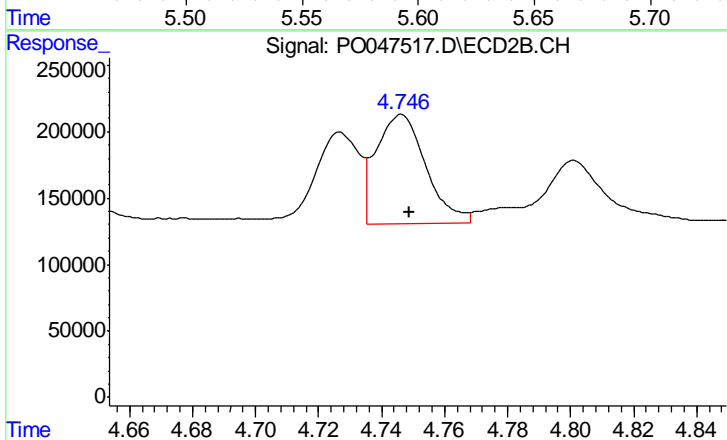
#15 AR-1232-5

R.T.: 4.962 min
 Delta R.T.: -0.004 min
 Response: 1550930
 Conc: 866.58 ng/ml



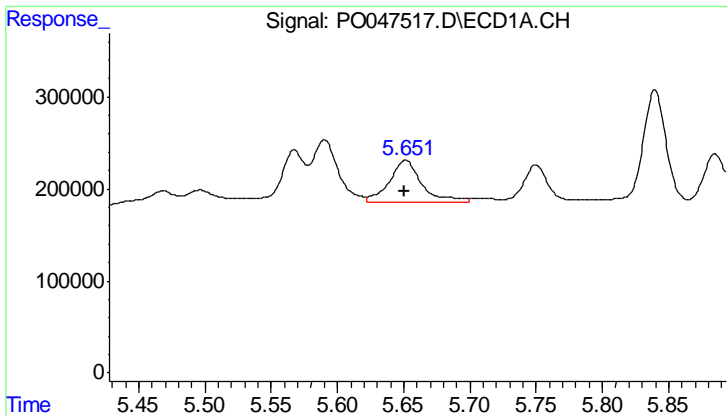
#16 AR-1242-1

R.T.: 5.590 min
 Delta R.T.: 0.002 min
 Response: 920132
 Conc: 125.19 ng/ml



#16 AR-1242-1

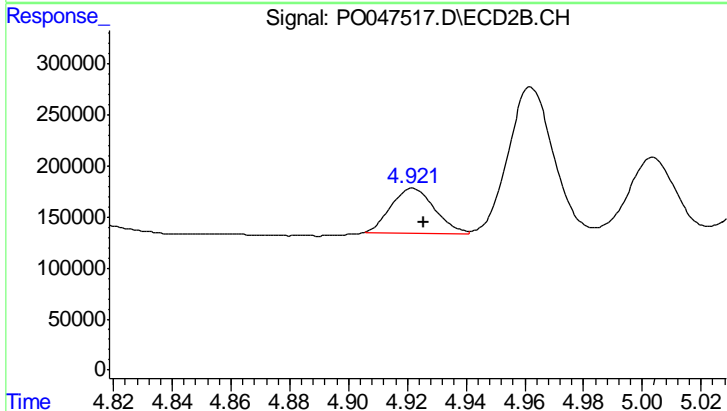
R.T.: 4.746 min
 Delta R.T.: -0.003 min
 Response: 907022
 Conc: 113.26 ng/ml



#17 AR-1242-2

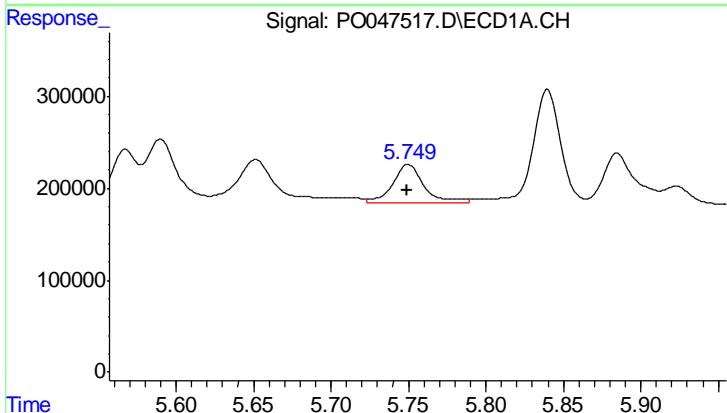
R.T.: 5.651 min
 Delta R.T.: 0.000 min
 Response: 799948
 Conc: 172.84 ng/ml

Instrument :
 ECD_O
 ClientSampleId :
 OK-02-021218



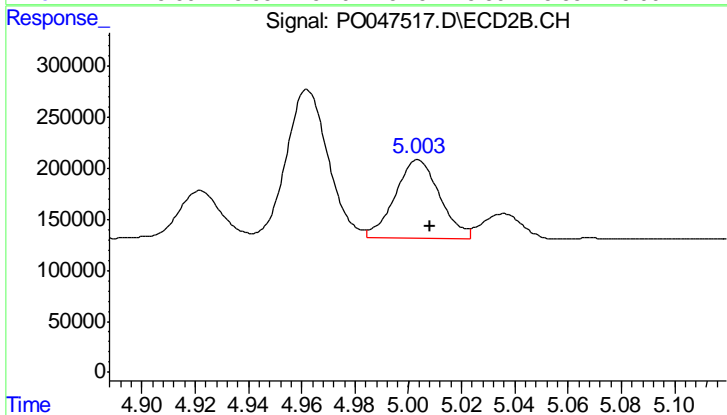
#17 AR-1242-2

R.T.: 4.922 min
 Delta R.T.: -0.004 min
 Response: 447126
 Conc: 108.53 ng/ml



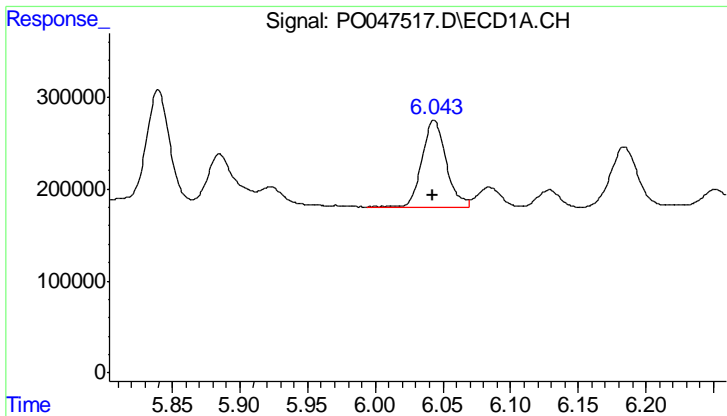
#18 AR-1242-3

R.T.: 5.750 min
 Delta R.T.: 0.000 min
 Response: 580066
 Conc: 150.98 ng/ml



#18 AR-1242-3

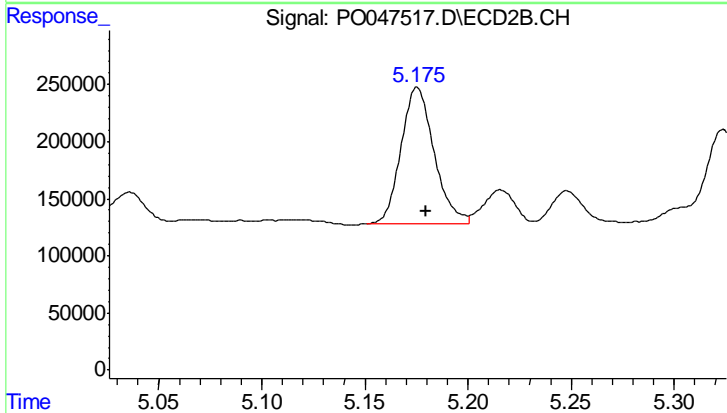
R.T.: 5.004 min
 Delta R.T.: -0.004 min
 Response: 881422
 Conc: 210.17 ng/ml



#19 AR-1242-4

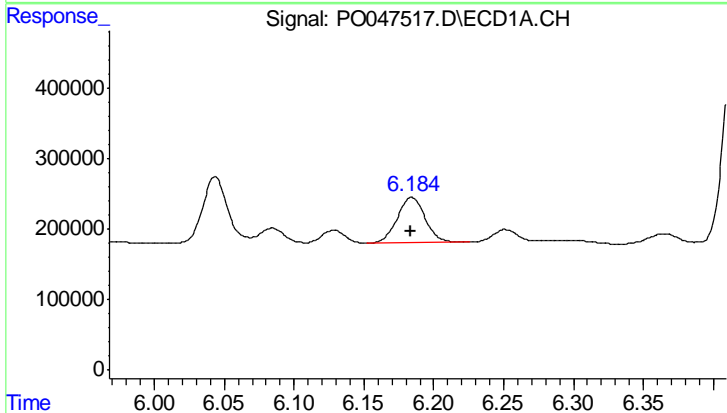
R.T.: 6.043 min
 Delta R.T.: 0.001 min
 Response: 1173863
 Conc: 305.36 ng/ml

Instrument :
 ECD_O
 ClientSampled :
 OK-02-021218



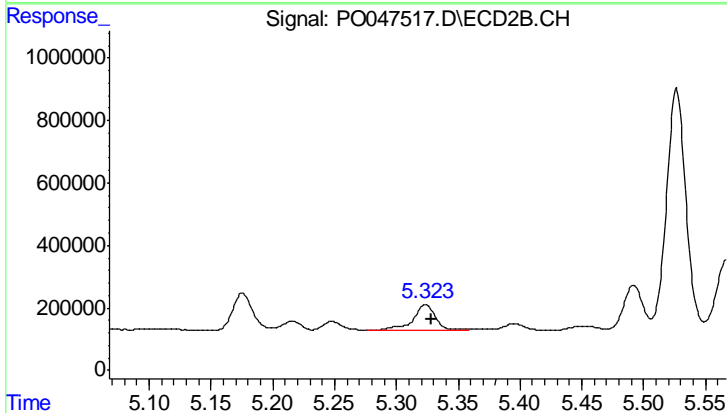
#19 AR-1242-4

R.T.: 5.176 min
 Delta R.T.: -0.004 min
 Response: 1340041
 Conc: 283.77 ng/ml



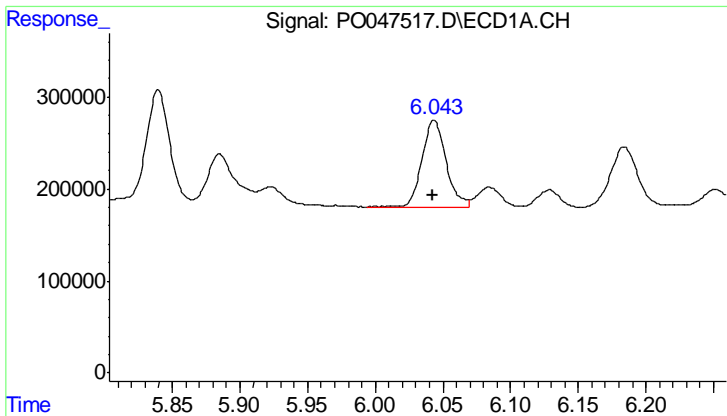
#20 AR-1242-5

R.T.: 6.184 min
 Delta R.T.: 0.000 min
 Response: 890598
 Conc: 208.06 ng/ml



#20 AR-1242-5

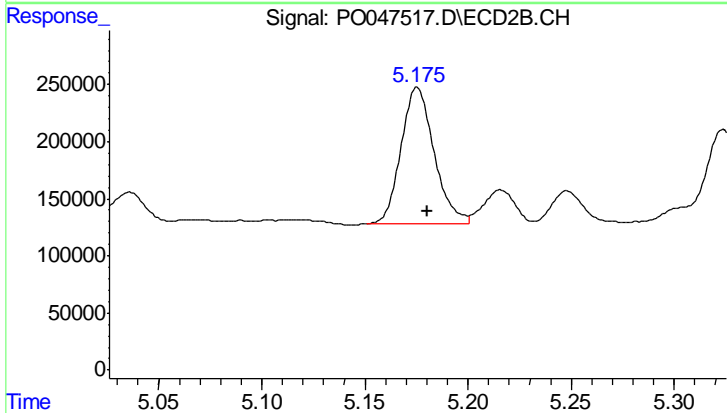
R.T.: 5.324 min
 Delta R.T.: -0.005 min
 Response: 1074880
 Conc: 277.63 ng/ml



#21 AR-1248-1

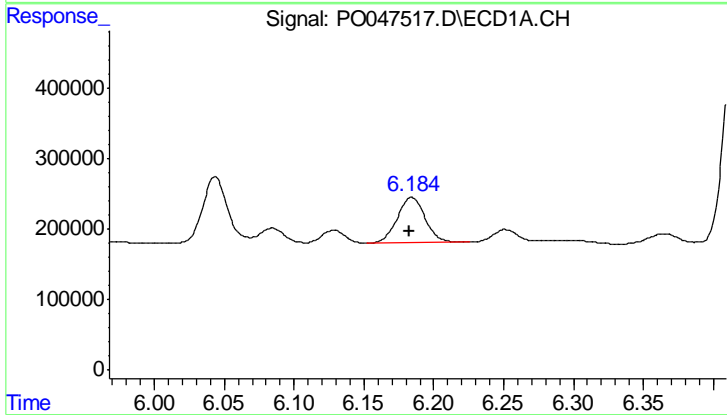
R.T.: 6.043 min
 Delta R.T.: 0.000 min
 Response: 1173863
 Conc: 187.73 ng/ml

Instrument :
 ECD_O
 ClientSampled :
 OK-02-021218



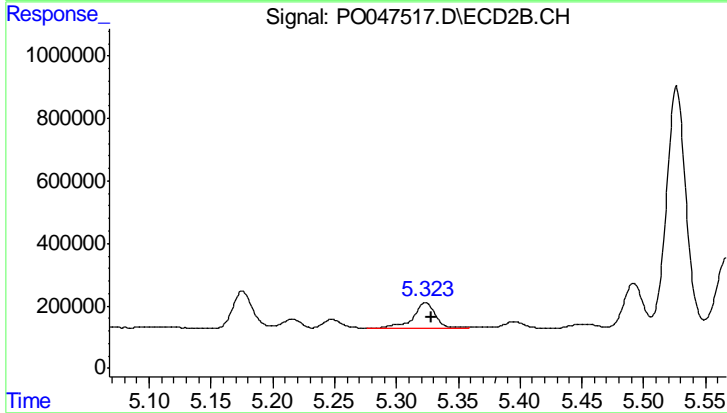
#21 AR-1248-1

R.T.: 5.176 min
 Delta R.T.: -0.005 min
 Response: 1340041
 Conc: 179.63 ng/ml



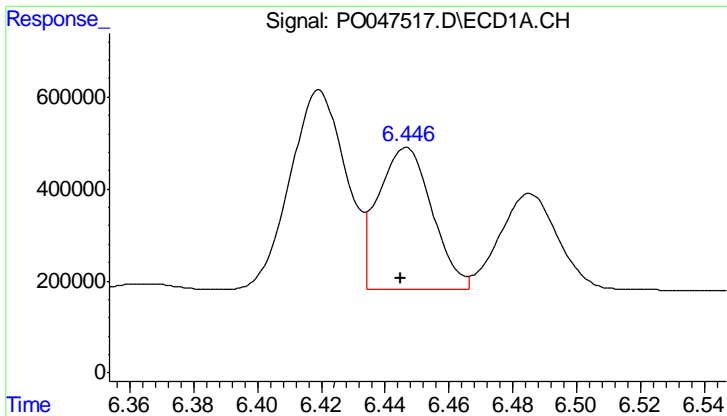
#22 AR-1248-2

R.T.: 6.184 min
 Delta R.T.: 0.002 min
 Response: 890598
 Conc: 163.49 ng/ml



#22 AR-1248-2

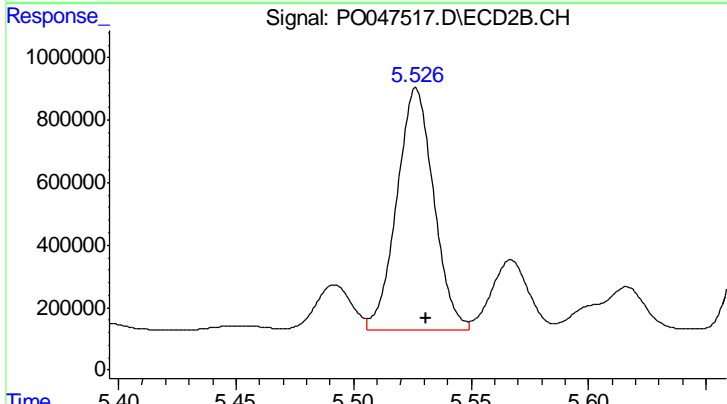
R.T.: 5.324 min
 Delta R.T.: -0.005 min
 Response: 1074880
 Conc: 200.91 ng/ml



#23 AR-1248-3

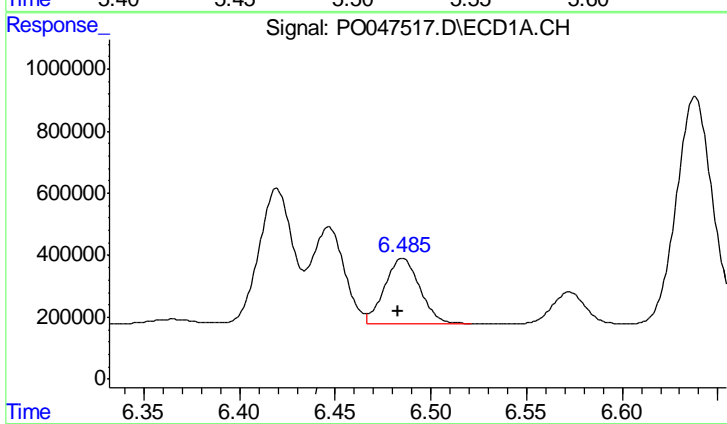
R.T.: 6.447 min
 Delta R.T.: 0.002 min
 Response: 3653004
 Conc: 519.09 ng/ml

Instrument :
 ECD_O
 ClientSampled :
 OK-02-021218



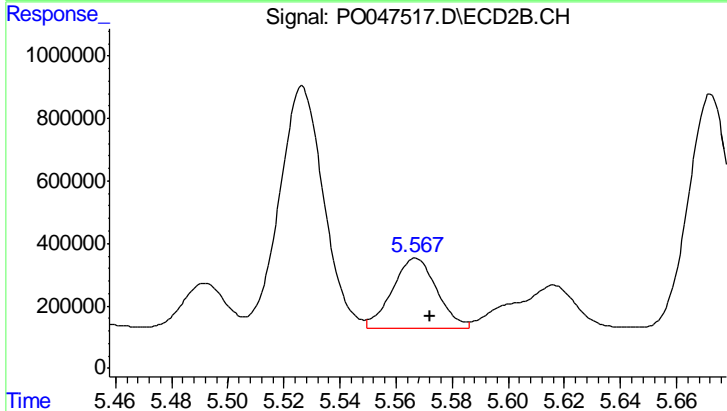
#23 AR-1248-3

R.T.: 5.527 min
 Delta R.T.: -0.004 min
 Response: 8424472
 Conc: 846.64 ng/ml



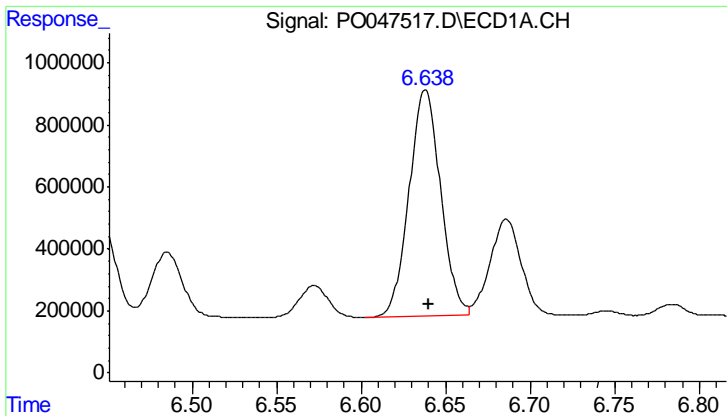
#24 AR-1248-4

R.T.: 6.485 min
 Delta R.T.: 0.003 min
 Response: 2651674
 Conc: 394.99 ng/ml



#24 AR-1248-4

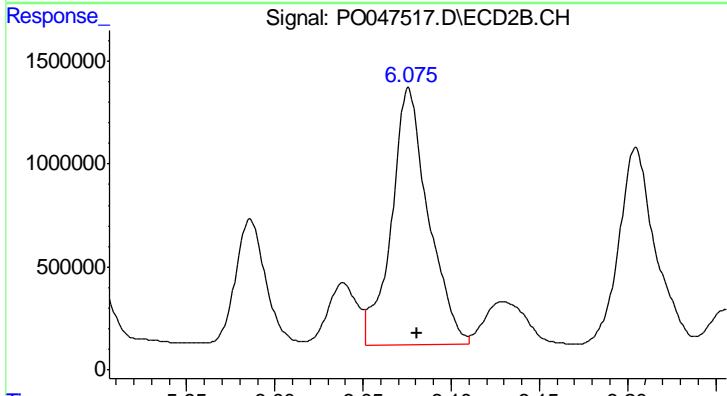
R.T.: 5.567 min
 Delta R.T.: -0.005 min
 Response: 2437380
 Conc: 347.79 ng/ml



#25 AR-1248-5

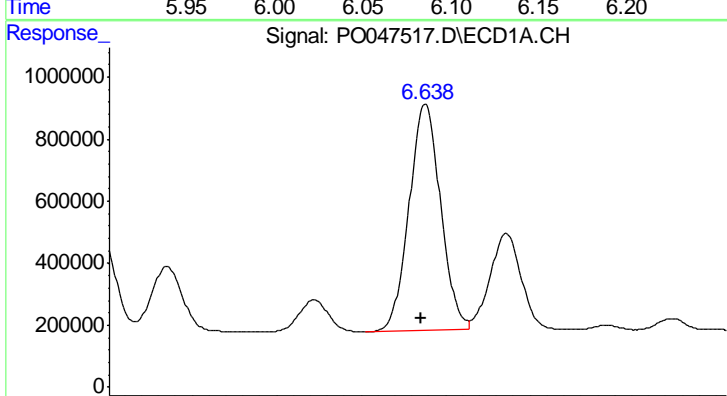
R.T.: 6.638 min
 Delta R.T.: -0.002 min
 Response: 9469363
 Conc: 1337.92 ng/ml

Instrument :
 ECD_O
 ClientSampled :
 OK-02-021218



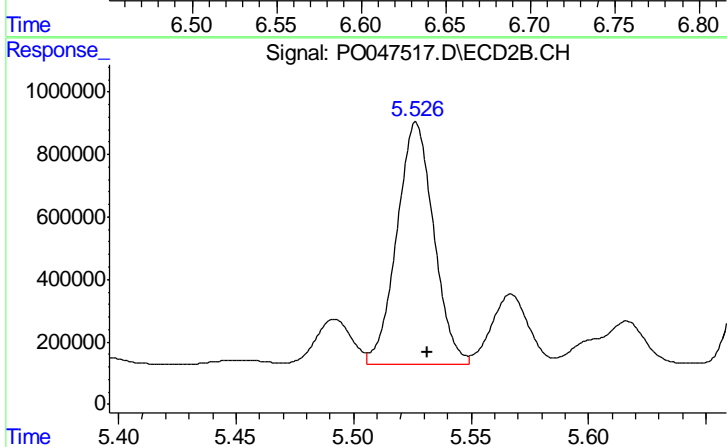
#25 AR-1248-5

R.T.: 6.076 min
 Delta R.T.: -0.005 min
 Response: 18163888
 Conc: 3811.32 ng/ml



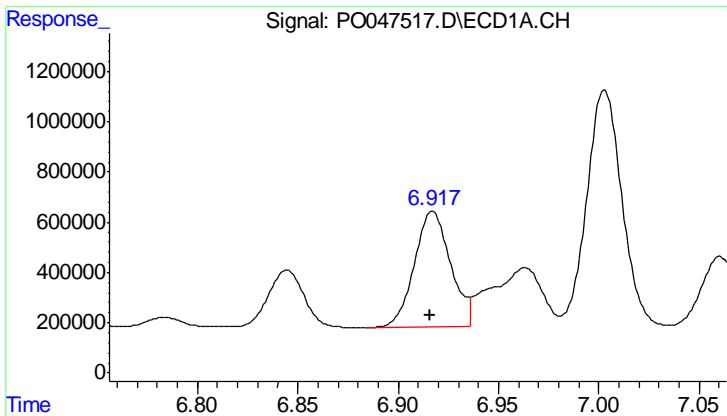
#26 AR-1254-1

R.T.: 6.638 min
 Delta R.T.: 0.002 min
 Response: 9469363
 Conc: 774.34 ng/ml



#26 AR-1254-1

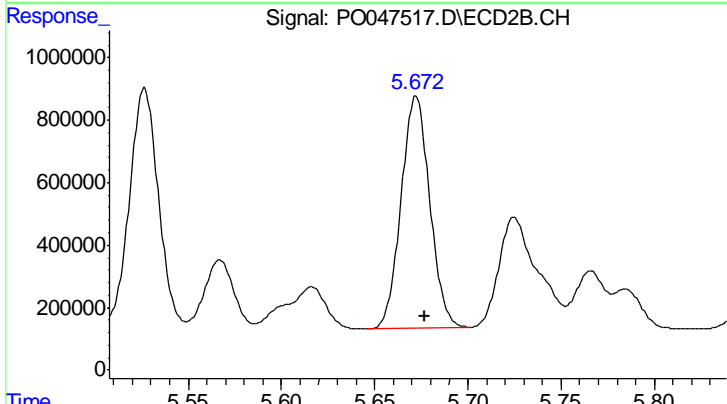
R.T.: 5.527 min
 Delta R.T.: -0.005 min
 Response: 8424472
 Conc: 684.64 ng/ml



#27 AR-1254-2

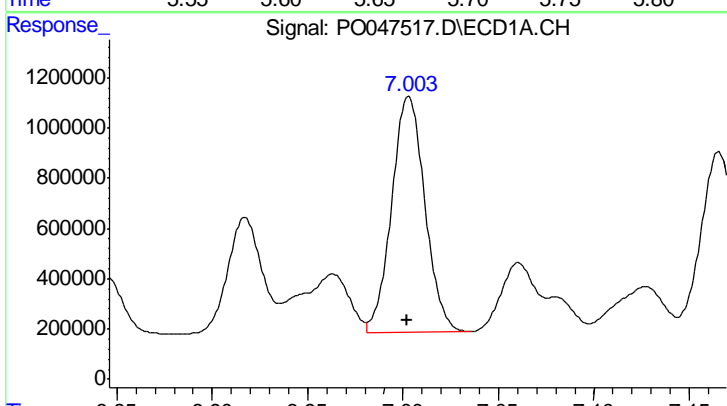
R.T.: 6.917 min
 Delta R.T.: 0.001 min
 Response: 5780697
 Conc: 775.12 ng/ml

Instrument :
 ECD_O
 ClientSampled :
 OK-02-021218



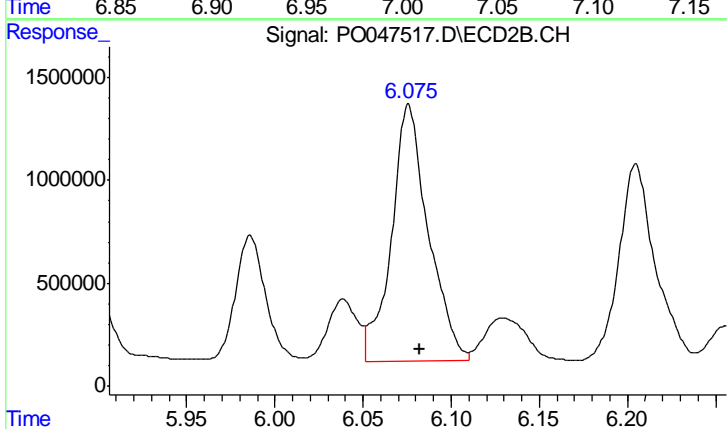
#27 AR-1254-2

R.T.: 5.672 min
 Delta R.T.: -0.005 min
 Response: 7957001
 Conc: 764.38 ng/ml



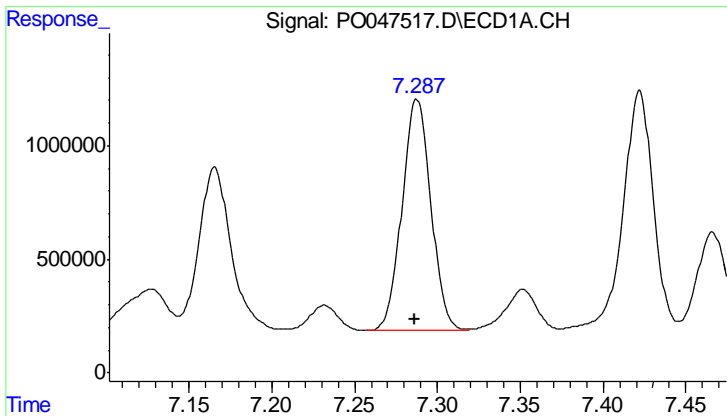
#28 AR-1254-3

R.T.: 7.003 min
 Delta R.T.: 0.000 min
 Response: 11365166
 Conc: 871.47 ng/ml



#28 AR-1254-3

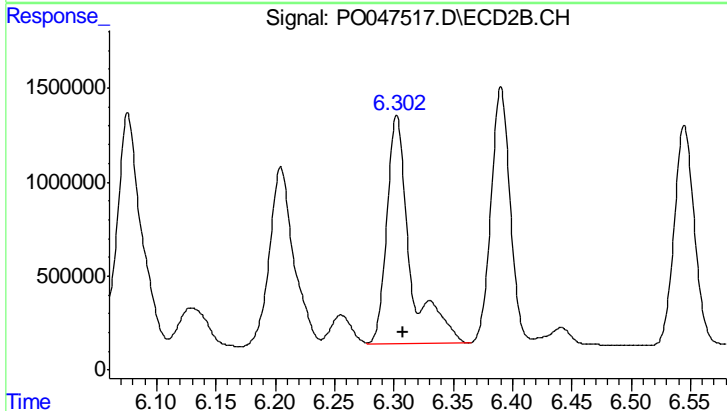
R.T.: 6.076 min
 Delta R.T.: -0.006 min
 Response: 18163888
 Conc: 1046.59 ng/ml



#29 AR-1254-4

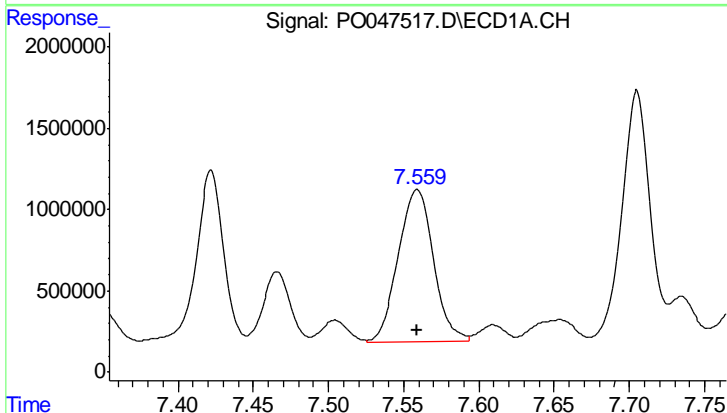
R.T.: 7.288 min
 Delta R.T.: 0.001 min
 Response: 12384940
 Conc: 1270.72 ng/ml

Instrument :
 ECD_O
 ClientSampled :
 OK-02-021218



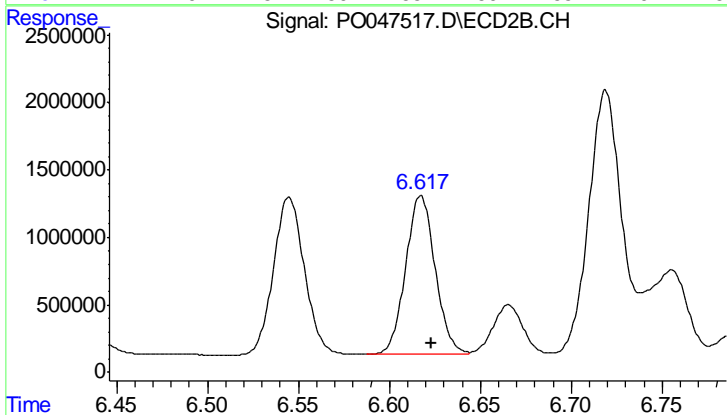
#29 AR-1254-4

R.T.: 6.302 min
 Delta R.T.: -0.006 min
 Response: 16692589
 Conc: 1540.57 ng/ml



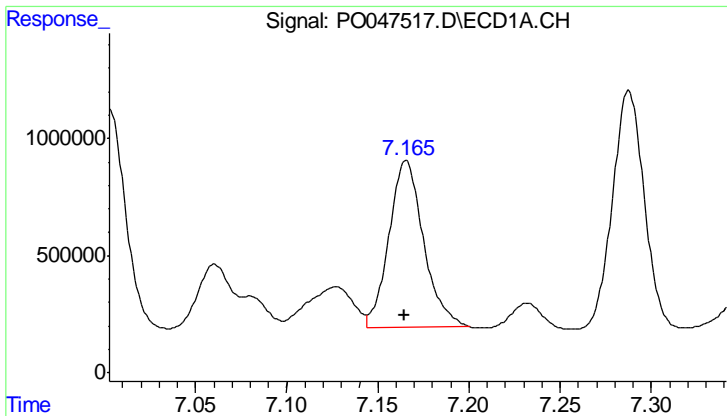
#30 AR-1254-5

R.T.: 7.559 min
 Delta R.T.: 0.000 min
 Response: 15168665
 Conc: 2053.21 ng/ml



#30 AR-1254-5

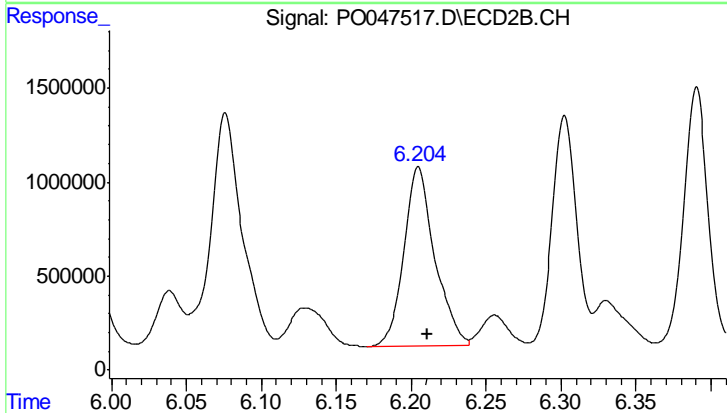
R.T.: 6.617 min
 Delta R.T.: -0.006 min
 Response: 13408692
 Conc: 1753.31 ng/ml



#31 AR-1260-1

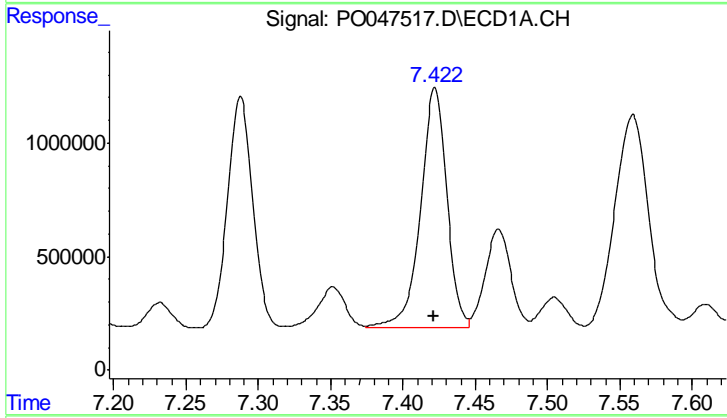
R.T.: 7.165 min
 Delta R.T.: 0.000 min
 Response: 9372478
 Conc: 999.51 ng/ml

Instrument :
 ECD_O
 ClientSampleId :
 OK-02-021218



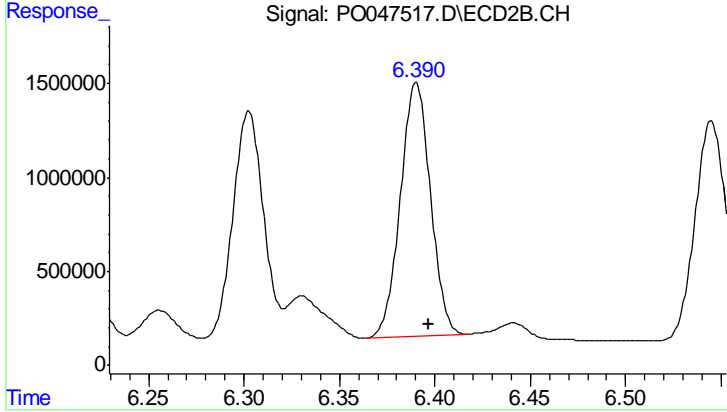
#31 AR-1260-1

R.T.: 6.205 min
 Delta R.T.: -0.006 min
 Response: 13560757
 Conc: 1227.21 ng/ml



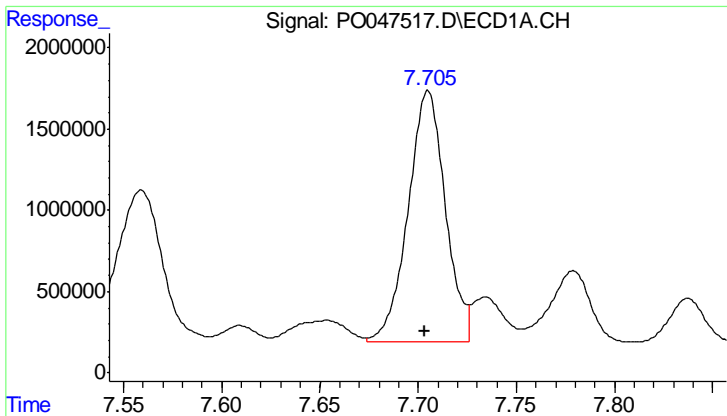
#32 AR-1260-2

R.T.: 7.422 min
 Delta R.T.: 0.001 min
 Response: 13402824
 Conc: 1201.92 ng/ml



#32 AR-1260-2

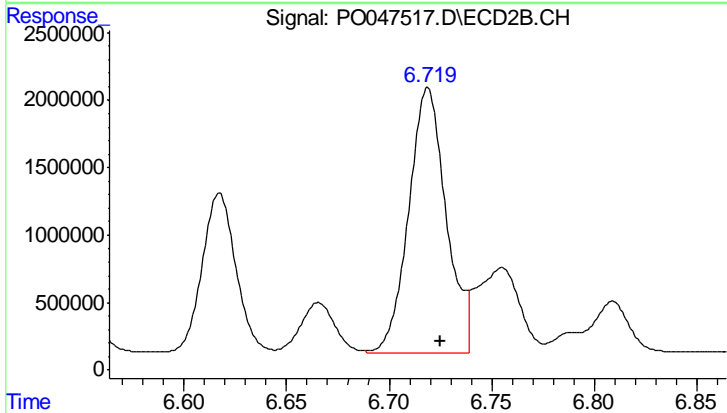
R.T.: 6.390 min
 Delta R.T.: -0.007 min
 Response: 14847583
 Conc: 1107.36 ng/ml



#33 AR-1260-3

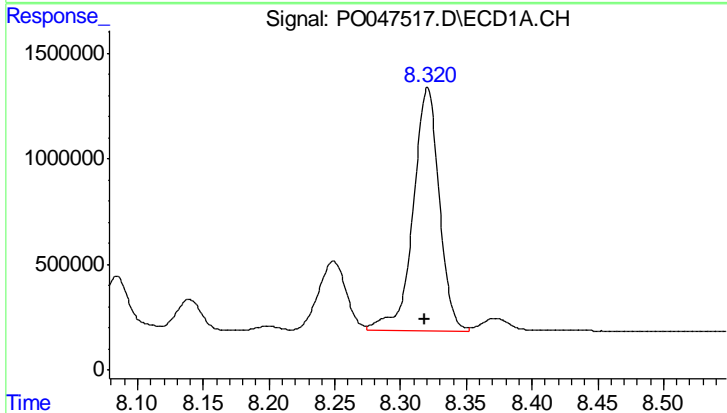
R.T.: 7.705 min
 Delta R.T.: 0.002 min
 Response: 20521272
 Conc: 1594.99 ng/ml

Instrument :
 ECD_O
 ClientSampled :
 OK-02-021218



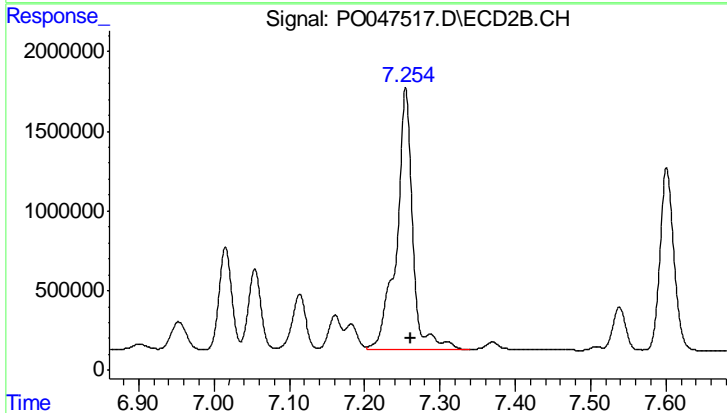
#33 AR-1260-3

R.T.: 6.719 min
 Delta R.T.: -0.006 min
 Response: 24914644
 Conc: 1713.78 ng/ml



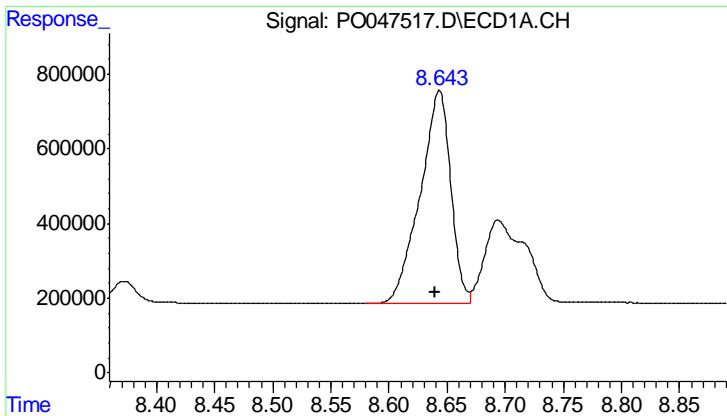
#34 AR-1260-4

R.T.: 8.321 min
 Delta R.T.: 0.002 min
 Response: 15916856
 Conc: 894.82 ng/ml



#34 AR-1260-4

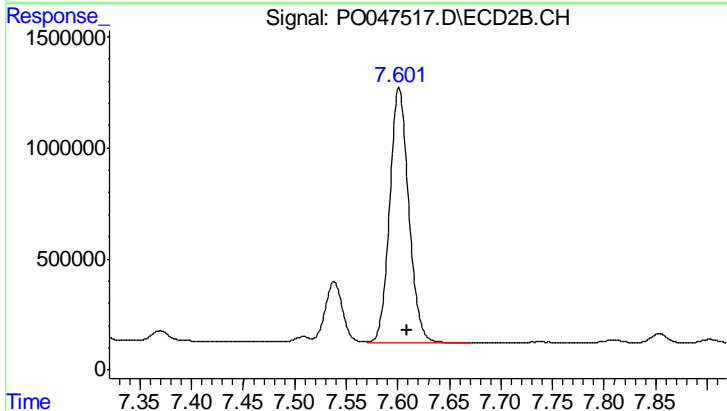
R.T.: 7.255 min
 Delta R.T.: -0.007 min
 Response: 25115022
 Conc: 1141.40 ng/ml



#35 AR-1260-5

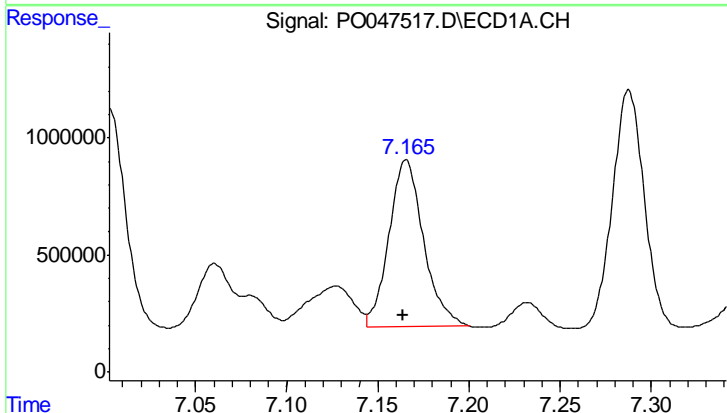
R.T.: 8.643 min
 Delta R.T.: 0.003 min
 Response: 10483703
 Conc: 918.06 ng/ml

Instrument :
 ECD_O
 ClientSampleId :
 OK-02-021218



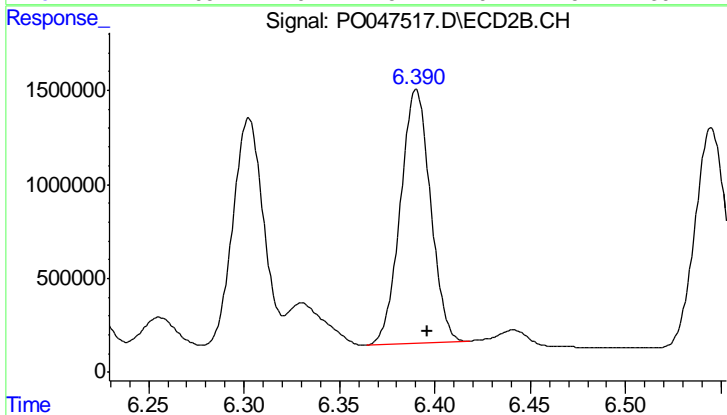
#35 AR-1260-5

R.T.: 7.601 min
 Delta R.T.: -0.008 min
 Response: 14827506
 Conc: 950.50 ng/ml



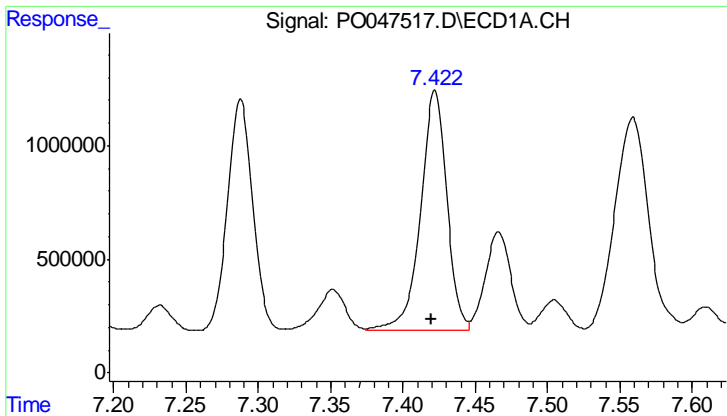
#36 AR-1262-1

R.T.: 7.165 min
 Delta R.T.: 0.002 min
 Response: 9372478
 Conc: 1131.33 ng/ml



#36 AR-1262-1

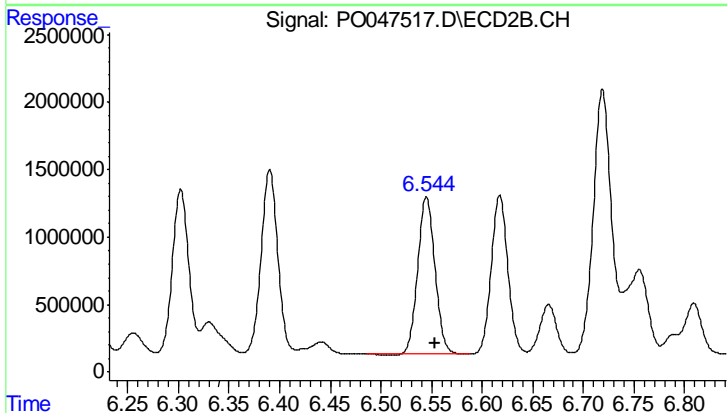
R.T.: 6.390 min
 Delta R.T.: -0.006 min
 Response: 14847583
 Conc: 1309.54 ng/ml



#37 AR-1262-2

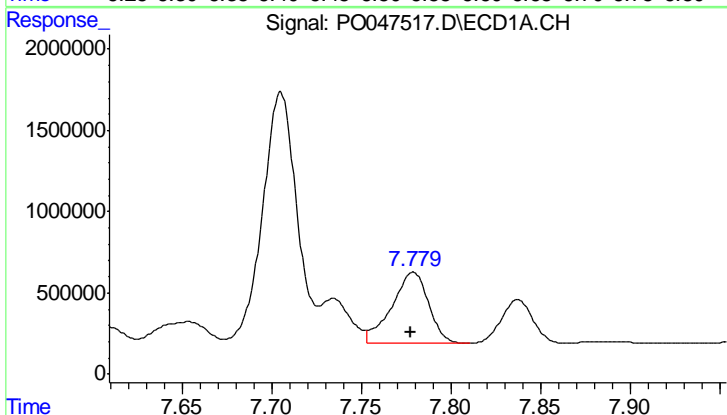
R.T.: 7.422 min
 Delta R.T.: 0.002 min
 Response: 13402824
 Conc: 1382.92 ng/ml

Instrument :
 ECD_O
 ClientSampled :
 OK-02-021218



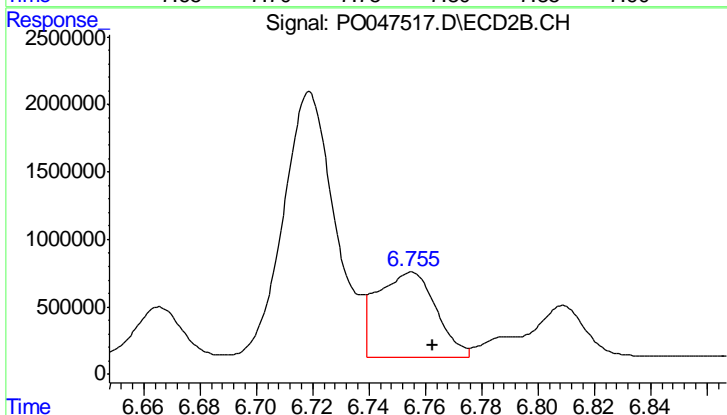
#37 AR-1262-2

R.T.: 6.545 min
 Delta R.T.: -0.008 min
 Response: 13811307
 Conc: 1223.92 ng/ml



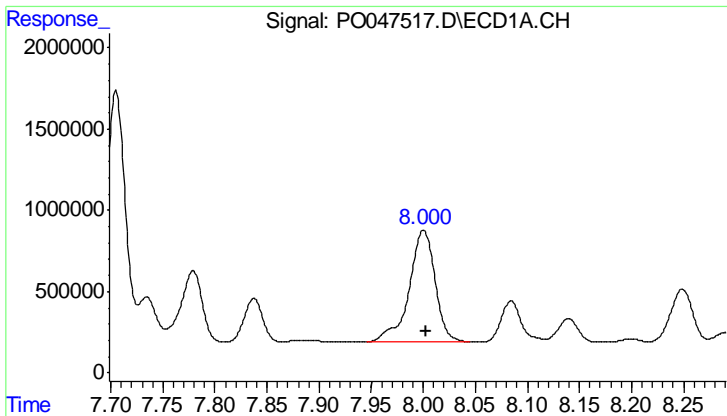
#38 AR-1262-3

R.T.: 7.779 min
 Delta R.T.: 0.001 min
 Response: 6300873
 Conc: 513.42 ng/ml



#38 AR-1262-3

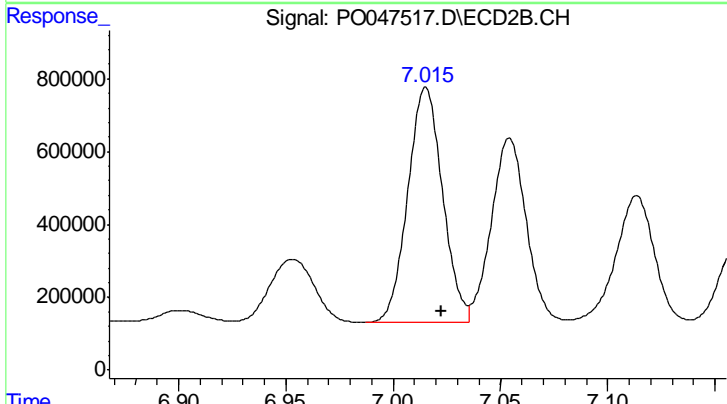
R.T.: 6.755 min
 Delta R.T.: -0.008 min
 Response: 9146930
 Conc: 606.08 ng/ml



#39 AR-1262-4

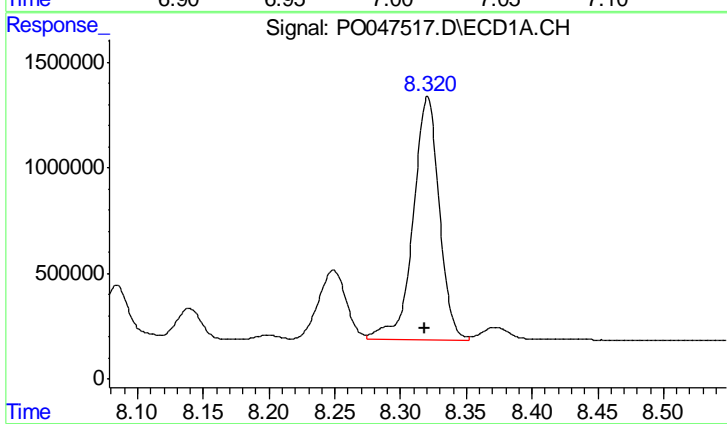
R.T.: 8.000 min
 Delta R.T.: -0.003 min
 Response: 11951729
 Conc: 1014.95 ng/ml

Instrument :
 ECD_O
 ClientSampled :
 OK-02-021218



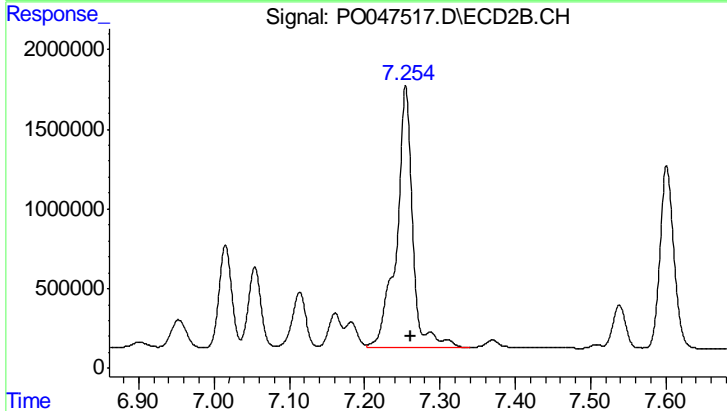
#39 AR-1262-4

R.T.: 7.015 min
 Delta R.T.: -0.007 min
 Response: 7311098
 Conc: 555.21 ng/ml



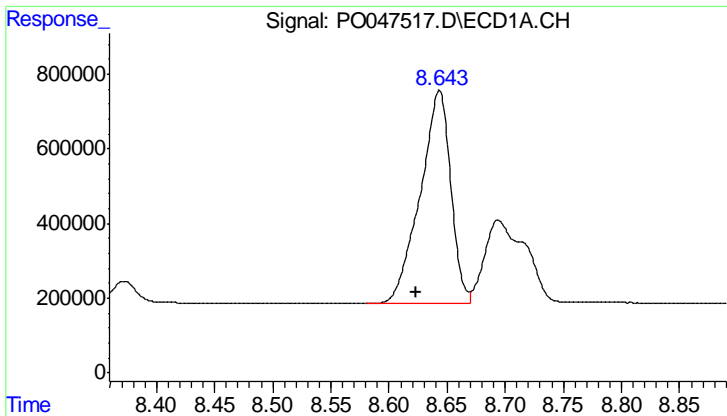
#40 AR-1262-5

R.T.: 8.321 min
 Delta R.T.: 0.003 min
 Response: 15916856
 Conc: 740.81 ng/ml



#40 AR-1262-5

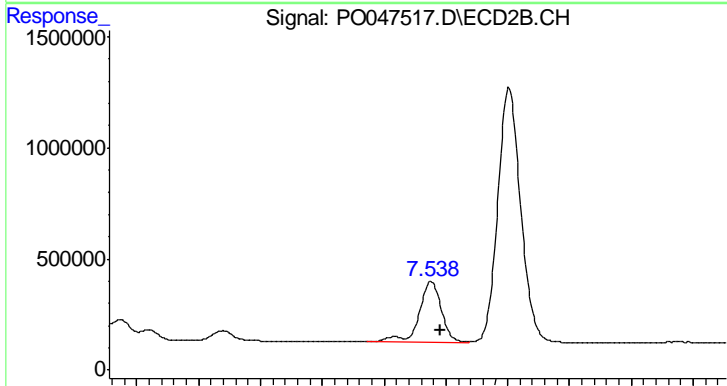
R.T.: 7.255 min
 Delta R.T.: -0.006 min
 Response: 25115022
 Conc: 972.37 ng/ml



#41 AR-1268-1

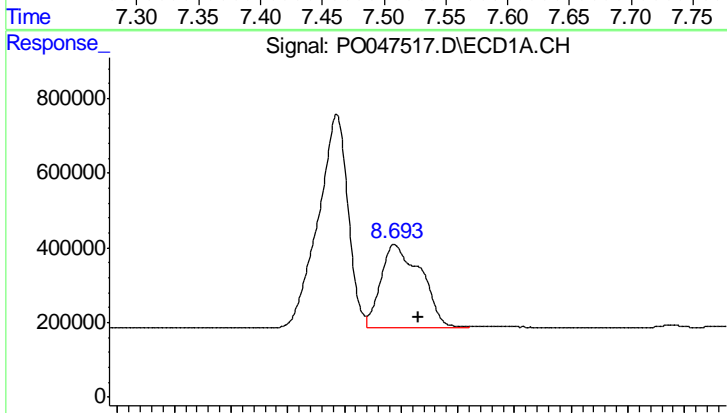
R.T.: 8.643 min
 Delta R.T.: 0.020 min
 Response: 10483703
 Conc: 451.70 ng/ml

Instrument :
 ECD_O
 ClientSampled :
 OK-02-021218



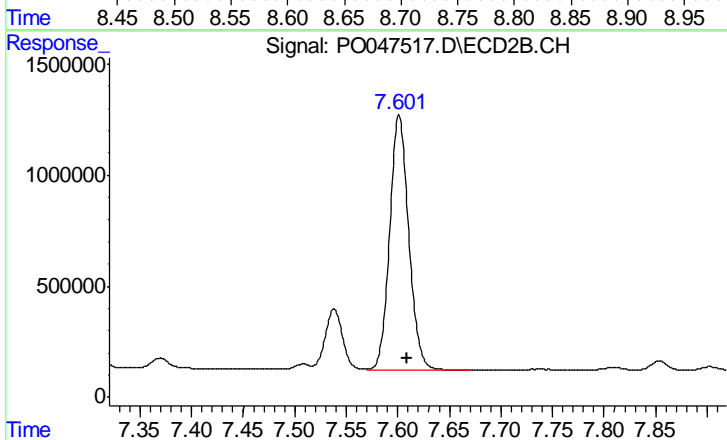
#41 AR-1268-1

R.T.: 7.538 min
 Delta R.T.: -0.007 min
 Response: 3432624
 Conc: 132.03 ng/ml



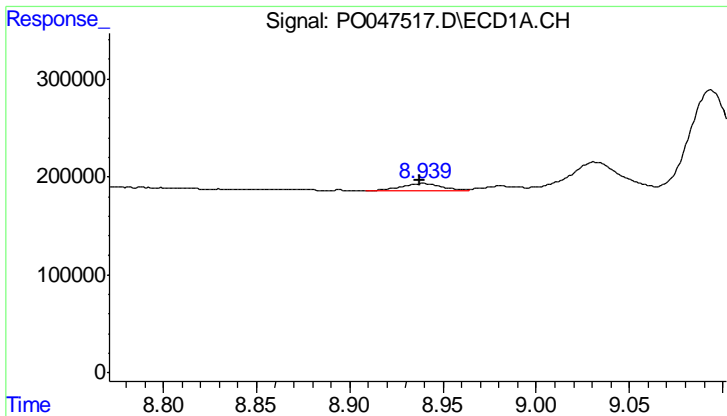
#42 AR-1268-2

R.T.: 8.694 min
 Delta R.T.: -0.022 min
 Response: 5578057
 Conc: 260.33 ng/ml



#42 AR-1268-2

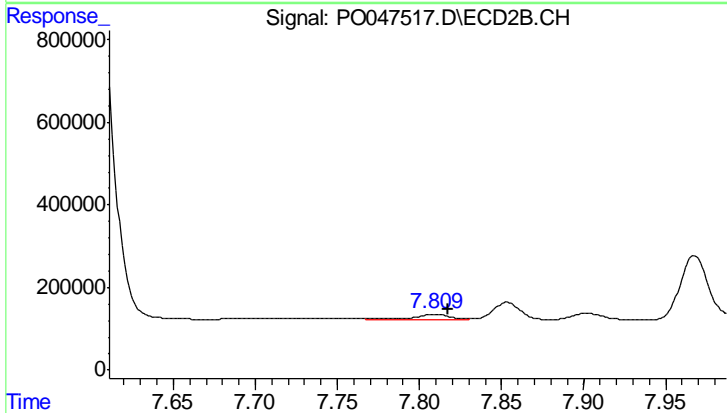
R.T.: 7.601 min
 Delta R.T.: -0.008 min
 Response: 14827506
 Conc: 595.18 ng/ml



#43 AR-1268-3

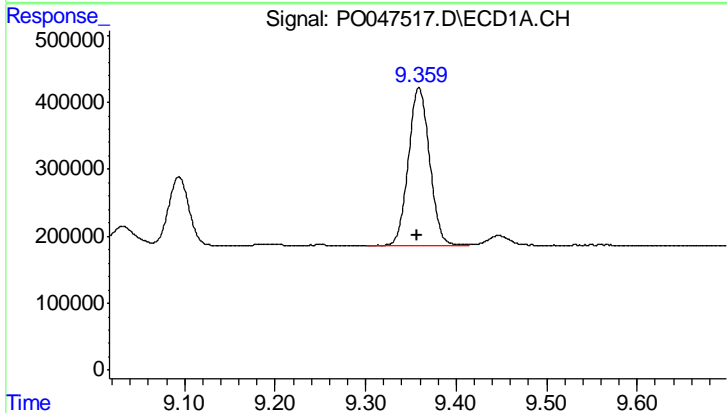
R.T.: 8.939 min
 Delta R.T.: 0.001 min
 Response: 126232
 Conc: 6.99 ng/ml

Instrument :
 ECD_O
 ClientSampleId :
 OK-02-021218



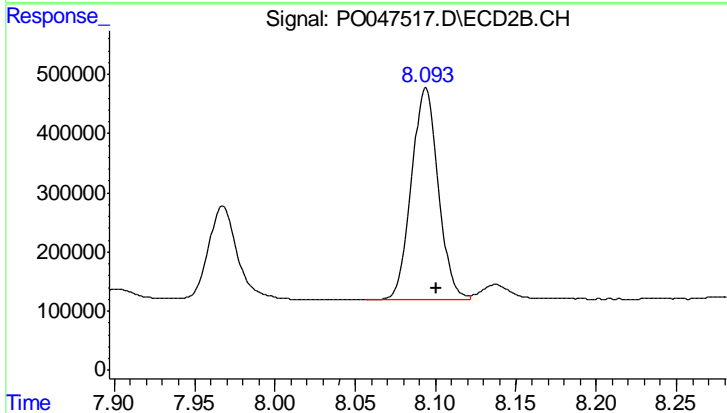
#43 AR-1268-3

R.T.: 7.809 min
 Delta R.T.: -0.008 min
 Response: 254962
 Conc: 12.92 ng/ml



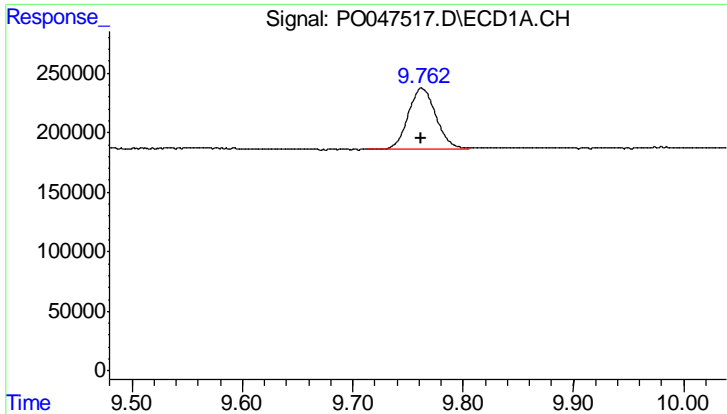
#44 AR-1268-4

R.T.: 9.359 min
 Delta R.T.: 0.001 min
 Response: 3883505
 Conc: 487.03 ng/ml



#44 AR-1268-4

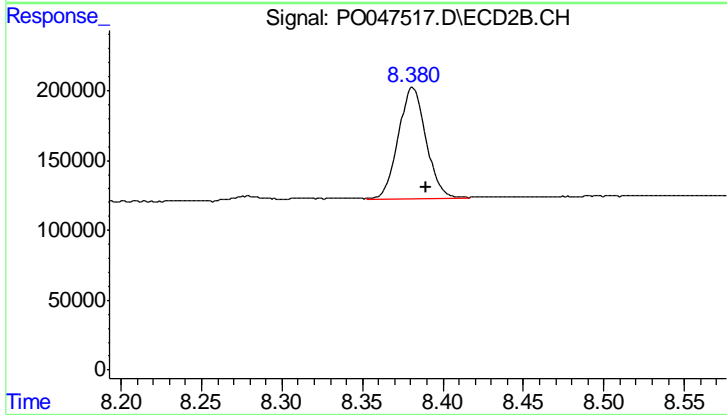
R.T.: 8.094 min
 Delta R.T.: -0.007 min
 Response: 4160005
 Conc: 495.91 ng/ml



#45 AR-1268-5

R.T.: 9.763 min
Delta R.T.: 0.000 min
Response: 897070
Conc: 16.46 ng/ml

Instrument :
ECD_O
ClientSampleId :
OK-02-021218



#45 AR-1268-5

R.T.: 8.381 min
Delta R.T.: -0.009 min
Response: 973189
Conc: 17.82 ng/ml