

Data Path : Z:\pestpcbsrv\HPCHEM1\ECD\_0\Data\P0080219\  
 Data File : P0058756.D  
 Signal(s) : Signal #1: ECD1A.CH Signal #2: ECD2B.CH  
 Acq On : 01 Aug 2019 17:35  
 Operator : SM/AJ  
 Sample : K4127-02  
 Misc :  
 ALS Vial : 37 Sample Multiplier: 1

**Instrument :**  
 ECD\_0  
**ClientSampleId :**  
 080119-NORTH

**Manual Integrations**  
**APPROVED**  
 Ankita  
 8/2/2019 2:04:19 PM

Integration File signal 1: autoint1.e  
 Integration File signal 2: autoint2.e  
 Quant Time: Aug 01 17:53:21 2019  
 Quant Method : Z:\pestpcbsrv\HPCHEM1\ECD\_0\methods\P0072819.M  
 Quant Title : GC EXTRACTABLES  
 QLast Update : Sat Jul 27 06:49:05 2019  
 Response via : Initial Calibration  
 Integrator: ChemStation 6890 Scale Mode: Small noise peaks clipped

Volume Inj. : 2 µl  
 Signal #1 Phase : ZB-MR1 Signal #2 Phase: ZB-MR2  
 Signal #1 Info : 30Mx0.32mmx 0.50µ Signal #2 Info : 30M x 0.32mm x 0.25µm

Compound	RT#1	RT#2	Resp#1	Resp#2	ng/ml	ng/ml
-----						
System Monitoring Compounds						
1) SA Tetrachlo...	4.165	3.518	728864	556373	17.271	13.927m
2) SA Decachlor...	9.641	8.403	833990	568508	15.400	14.402

Target Compounds

(f)=RT Delta > 1/2 Window (#)=Amounts differ by > 25% (m)=manual int.

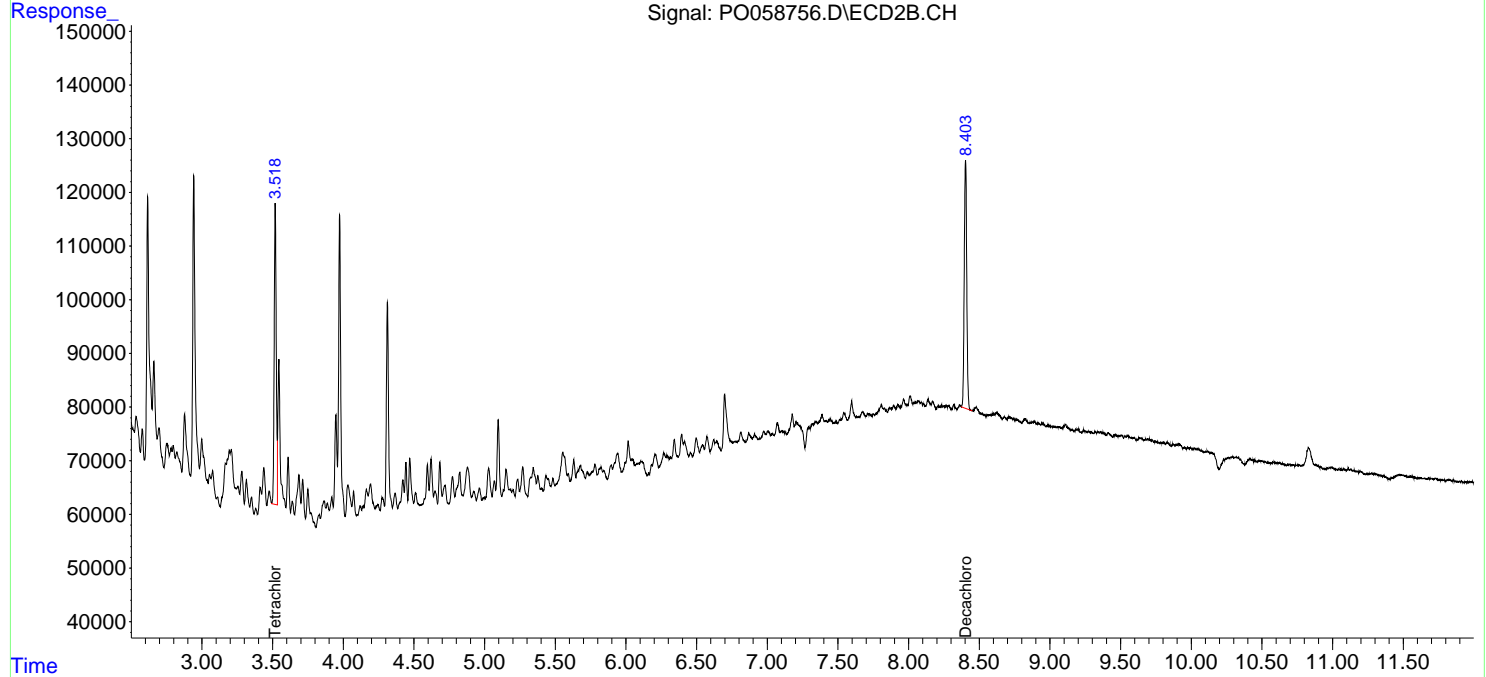
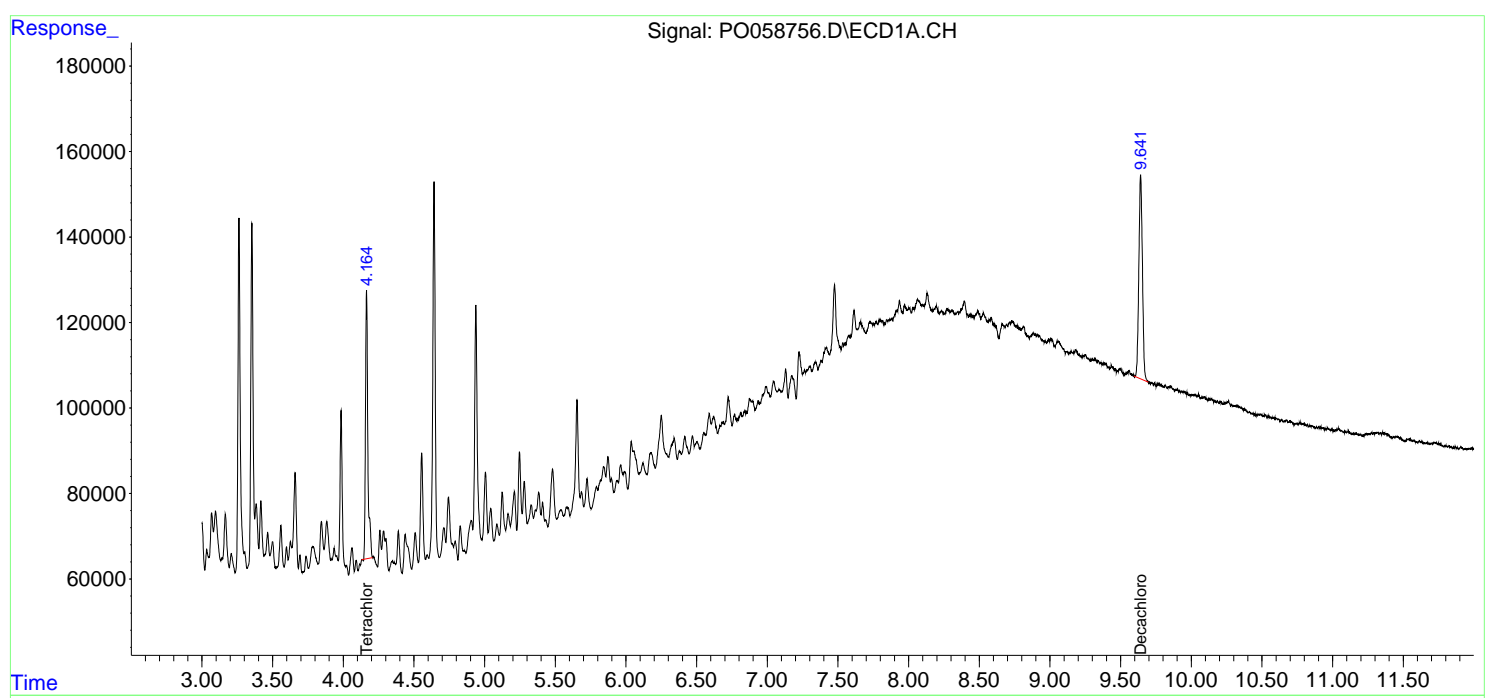
Data Path : Z:\pestpcbsrv\HPCHEM1\ECD\_0\Data\PO080219\  
 Data File : PO058756.D  
 Signal(s) : Signal #1: ECD1A.CH Signal #2: ECD2B.CH  
 Acq On : 01 Aug 2019 17:35  
 Operator : SM/AJ  
 Sample : K4127-02  
 Misc :  
 ALS Vial : 37 Sample Multiplier: 1

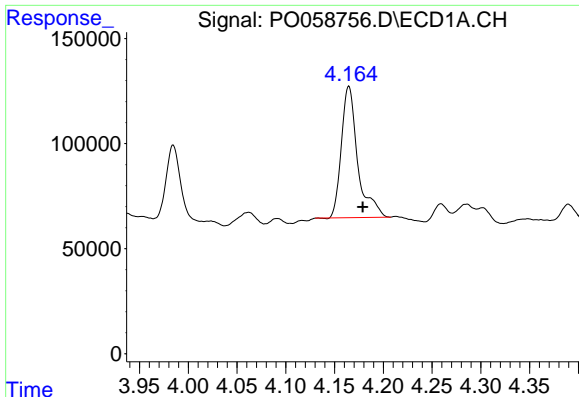
**Instrument :**  
 ECD\_O  
**ClientSampled :**  
 080119-NORTH

**Manual Integrations**  
**APPROVED**  
 Ankita  
 8/2/2019 2:04:19 PM

Integration File signal 1: autoint1.e  
 Integration File signal 2: autoint2.e  
 Quant Time: Aug 01 17:53:21 2019  
 Quant Method : Z:\pestpcbsrv\HPCHEM1\ECD\_0\methods\PO072819.M  
 Quant Title : GC EXTRACTABLES  
 QLast Update : Sat Jul 27 06:49:05 2019  
 Response via : Initial Calibration  
 Integrator: ChemStation 6890 Scale Mode: Small noise peaks clipped

Volume Inj. : 2 µl  
 Signal #1 Phase : ZB-MR1 Signal #2 Phase: ZB-MR2  
 Signal #1 Info : 30Mx0.32mmx 0.50µ Signal #2 Info : 30M x 0.32mm x 0.25µm

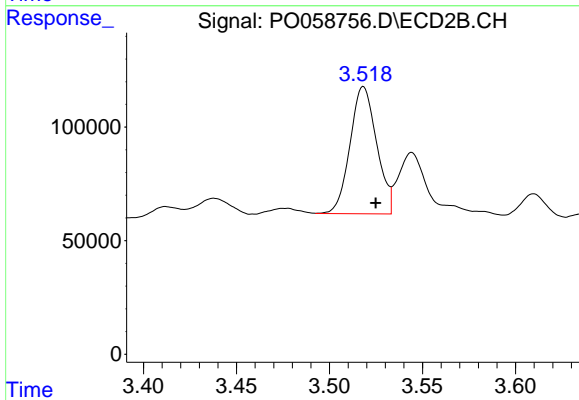




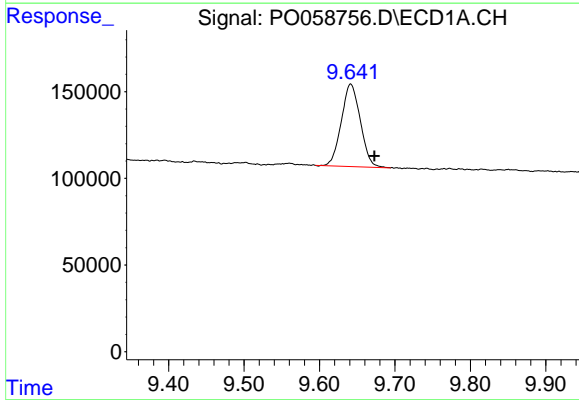
#1 Tetrachloro-m-xylene  
 R.T.: 4.165 min  
 Delta R.T.: -0.014 min  
 Response: 728864  
 Conc: 17.27 ng/ml

Instrument :  
 ECD\_O  
 ClientSampleId :  
 080119-NORTH

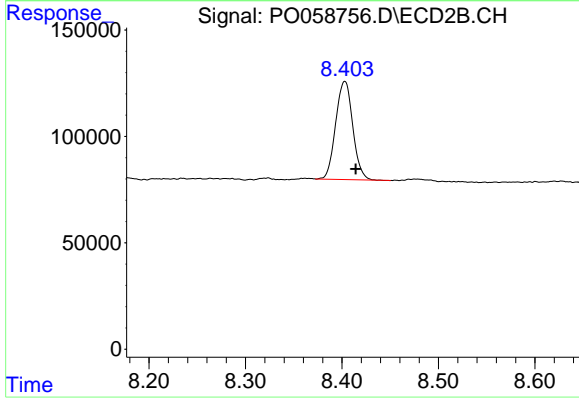
Manual Integrations  
 APPROVED  
 Ankita  
 8/2/2019 2:04:19 PM



#1 Tetrachloro-m-xylene  
 R.T.: 3.518 min  
 Delta R.T.: -0.007 min  
 Response: 556373  
 Conc: 13.93 ng/ml m



#2 Decachlorobiphenyl  
 R.T.: 9.641 min  
 Delta R.T.: -0.031 min  
 Response: 833990  
 Conc: 15.40 ng/ml



#2 Decachlorobiphenyl  
 R.T.: 8.403 min  
 Delta R.T.: -0.011 min  
 Response: 568508  
 Conc: 14.40 ng/ml