

Data Path : Z:\pestpcbsrv\HPCHEM1\ECD_0\Data\P0080219\
 Data File : P0058786.D
 Signal(s) : Signal #1: ECD1A.CH Signal #2: ECD2B.CH
 Acq On : 02 Aug 2019 2:07
 Operator : SM/AJ
 Sample : K4138-04
 Misc :
 ALS Vial : 51 Sample Multiplier: 1

Instrument :
 ECD_0
 ClientSampleId :
 S6-02-S

Integration File signal 1: autoint1.e
 Integration File signal 2: autoint2.e
 Quant Time: Aug 02 04:59:21 2019
 Quant Method : Z:\pestpcbsrv\HPCHEM1\ECD_0\methods\P0072819.M
 Quant Title : GC EXTRACTABLES
 QLast Update : Sat Jul 27 06:49:05 2019
 Response via : Initial Calibration
 Integrator: ChemStation 6890 Scale Mode: Small noise peaks clipped

Volume Inj. : 2 µl
 Signal #1 Phase : ZB-MR1 Signal #2 Phase: ZB-MR2
 Signal #1 Info : 30Mx0.32mmx 0.50µ Signal #2 Info : 30M x 0.32mm x 0.25µm

Compound	RT#1	RT#2	Resp#1	Resp#2	ng/ml	ng/ml

System Monitoring Compounds						
1) SA Tetrachlo...	4.164	3.517	863329	743050	20.457	18.599
2) SA Decachlor...	9.639	8.401	585280	455852	10.807	11.548

Target Compounds

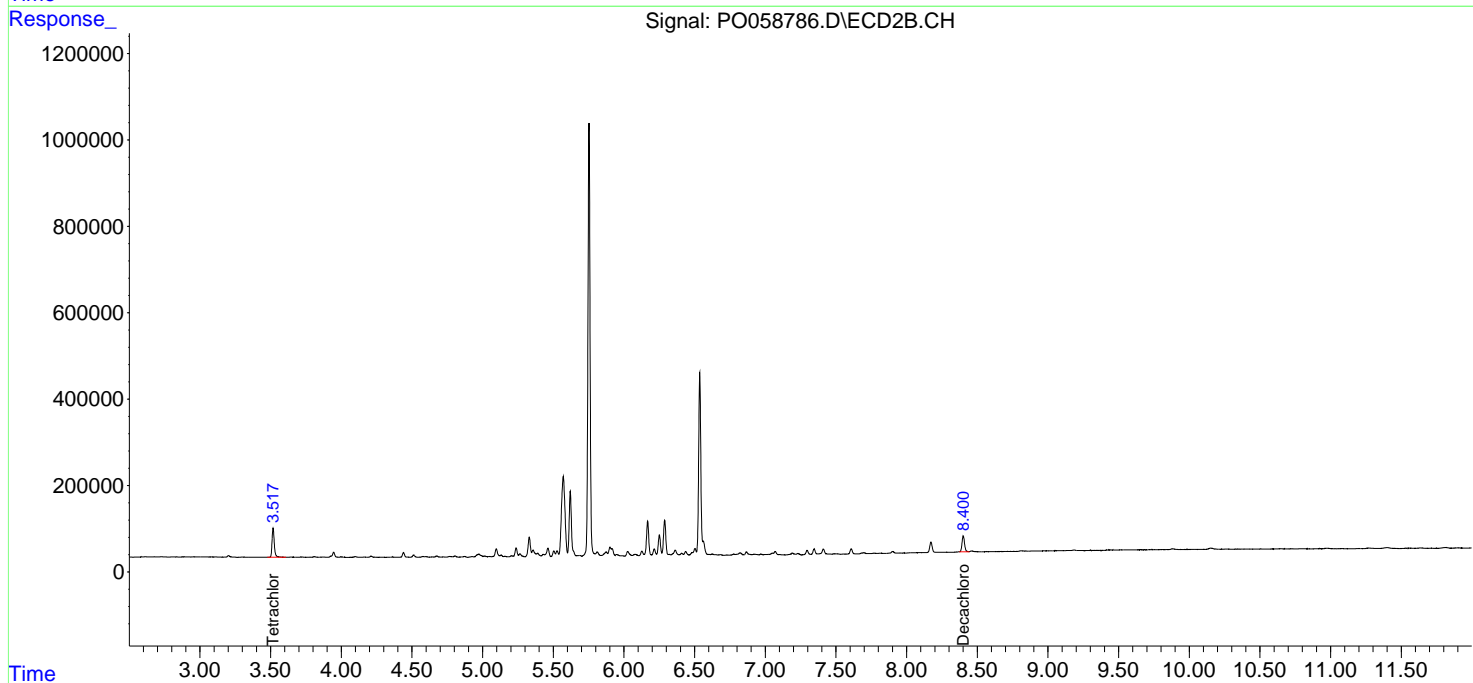
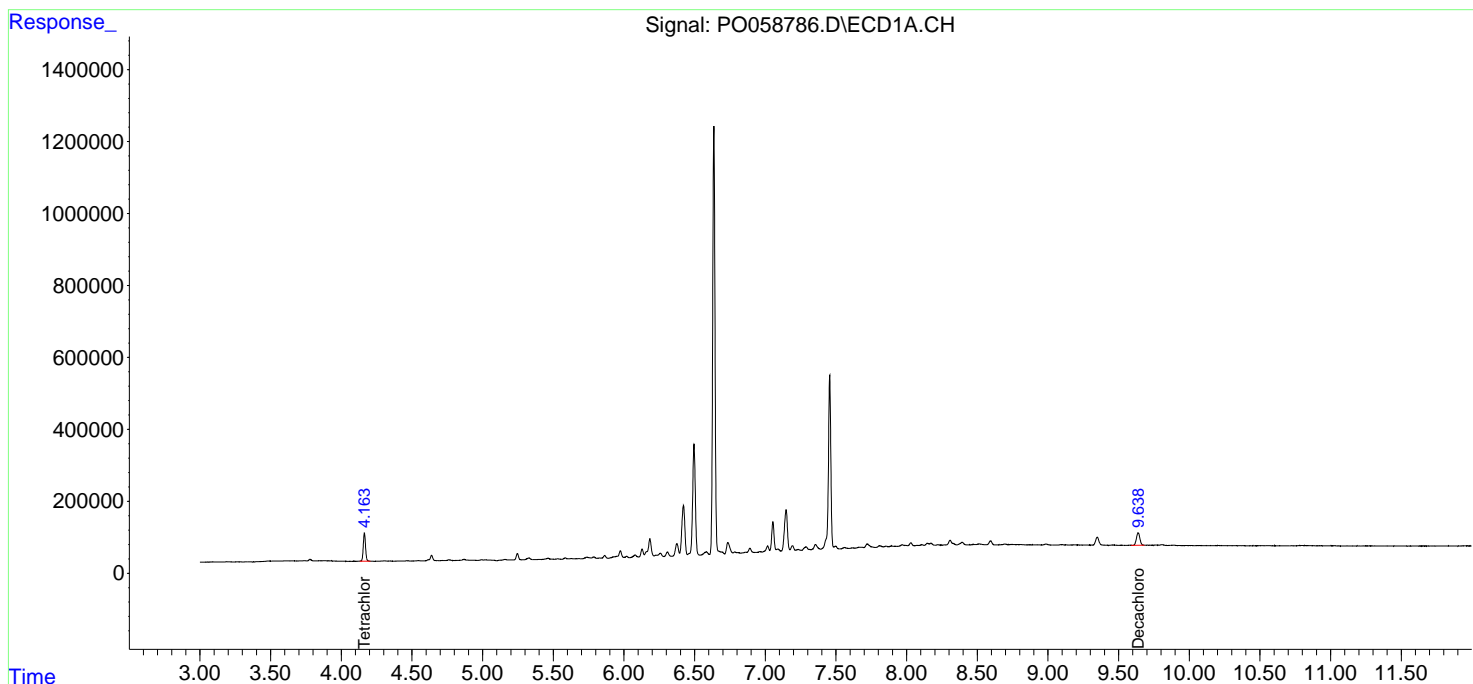
(f)=RT Delta > 1/2 Window (#)=Amounts differ by > 25% (m)=manual int.

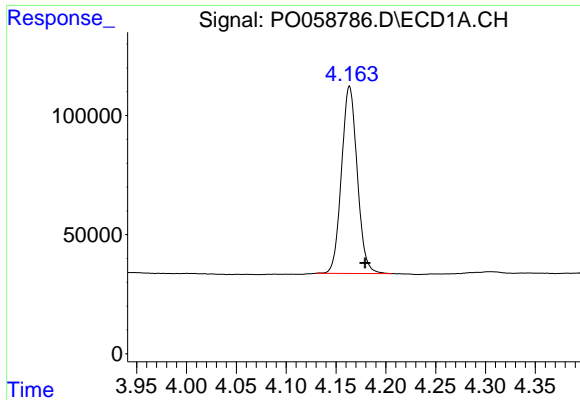
Data Path : Z:\pestpcbsrv\HPCHEM1\ECD_0\Data\P0080219\
 Data File : P0058786.D
 Signal(s) : Signal #1: ECD1A.CH Signal #2: ECD2B.CH
 Acq On : 02 Aug 2019 2:07
 Operator : SM/AJ
 Sample : K4138-04
 Misc :
 ALS Vial : 51 Sample Multiplier: 1

Instrument :
 ECD_O
 ClientSampleId :
 S6-02-S

Integration File signal 1: autoint1.e
 Integration File signal 2: autoint2.e
 Quant Time: Aug 02 04:59:21 2019
 Quant Method : Z:\pestpcbsrv\HPCHEM1\ECD_0\methods\P0072819.M
 Quant Title : GC EXTRACTABLES
 QLast Update : Sat Jul 27 06:49:05 2019
 Response via : Initial Calibration
 Integrator: ChemStation 6890 Scale Mode: Small noise peaks clipped

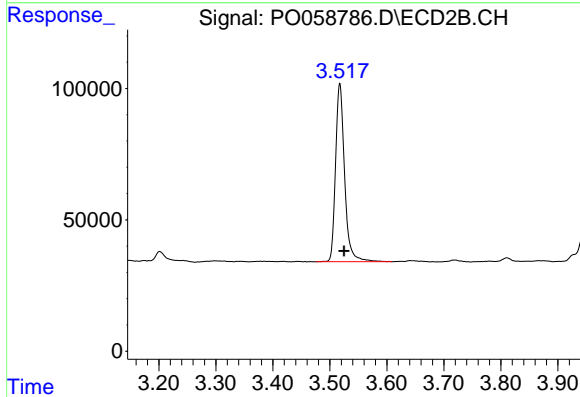
Volume Inj. : 2 µl
 Signal #1 Phase : ZB-MR1 Signal #2 Phase: ZB-MR2
 Signal #1 Info : 30Mx0.32mmx 0.50µ Signal #2 Info : 30M x 0.32mm x 0.25µm



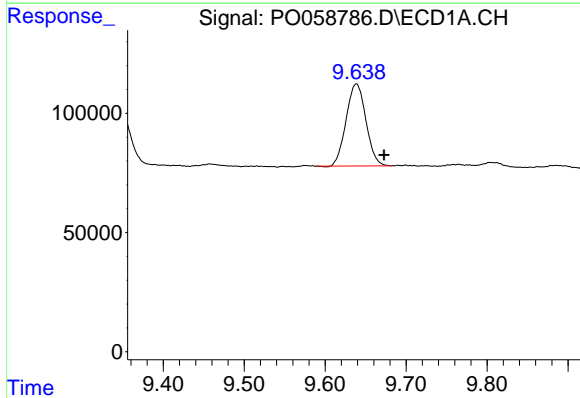


#1 Tetrachloro-m-xylene
 R.T.: 4.164 min
 Delta R.T.: -0.015 min
 Response: 863329
 Conc: 20.46 ng/ml

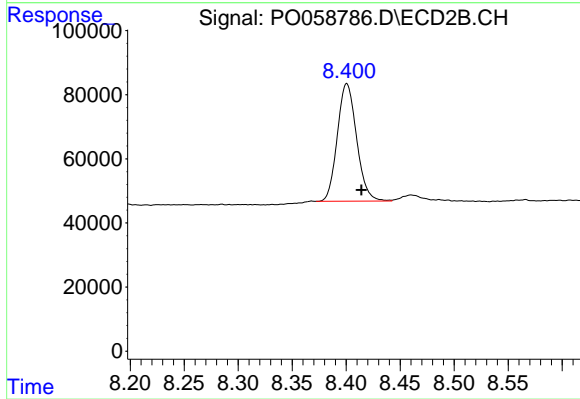
Instrument :
 ECD_O
 ClientSampled :
 S6-02-S



#1 Tetrachloro-m-xylene
 R.T.: 3.517 min
 Delta R.T.: -0.007 min
 Response: 743050
 Conc: 18.60 ng/ml



#2 Decachlorobiphenyl
 R.T.: 9.639 min
 Delta R.T.: -0.034 min
 Response: 585280
 Conc: 10.81 ng/ml



#2 Decachlorobiphenyl
 R.T.: 8.401 min
 Delta R.T.: -0.013 min
 Response: 455852
 Conc: 11.55 ng/ml