

Data Path : Z:\pestpcbsrv\HPCHEM1\ECD_0\Data\P0080221\
 Data File : P0080084.D
 Signal(s) : Signal #1: ECD1A.CH Signal #2: ECD2B.CH
 Acq On : 03 Aug 2021 00:57
 Operator : DD\AJ
 Sample : M3247-06 10X
 Misc :
 ALS Vial : 31 Sample Multiplier: 1

Instrument :
 ECD_0
ClientSampleId :
 HIA632R(1-1)

Manual Integrations
APPROVED
 mohammad
 8/3/2021 3:10:24 PM

Integration File signal 1: autoint1.e
 Integration File signal 2: autoint2.e
 Quant Time: Aug 03 02:21:36 2021
 Quant Method : Z:\pestpcbsrv\HPCHEM1\ECD_0\methods\P0072821.M
 Quant Title : GC EXTRACTABLES
 QLast Update : Wed Jul 28 18:45:36 2021
 Response via : Initial Calibration
 Integrator: ChemStation 6890 Scale Mode: Small noise peaks clipped

Volume Inj. : 2 µl
 Signal #1 Phase : ZB-MR1 Signal #2 Phase: ZB-MR2
 Signal #1 Info : 30Mx0.32mmx 0.50µ Signal #2 Info : 30M x 0.32mm x 0.25µm

Compound	RT#1	RT#2	Resp#1	Resp#2	ng/ml	ng/ml

System Monitoring Compounds						
1) SA Tetrachlo...	4.999	4.116	33379	17618	0.554	0.769 #
2) SA Decachlor...	11.110	9.525	33682	16823	0.718m	0.810

Target Compounds

 (f)=RT Delta > 1/2 Window (#)=Amounts differ by > 25% (m)=manual int.

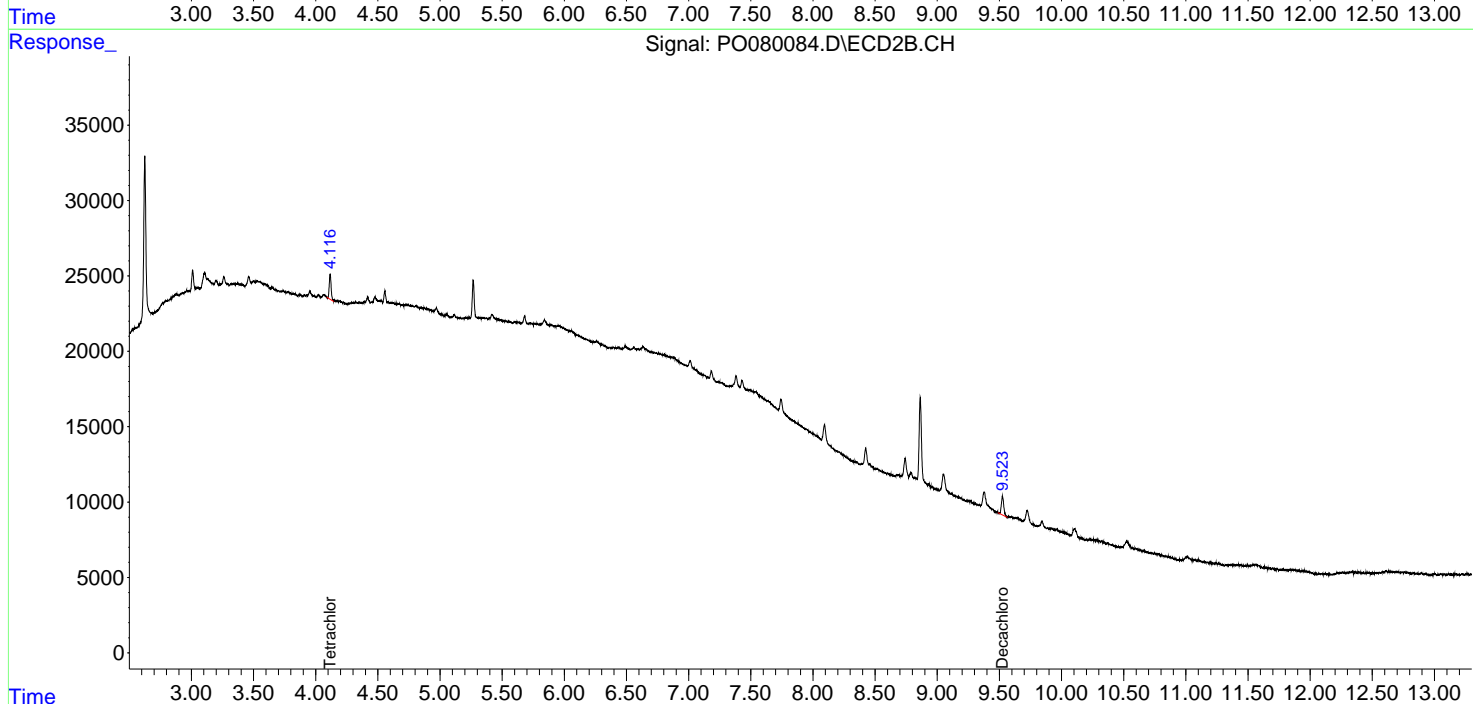
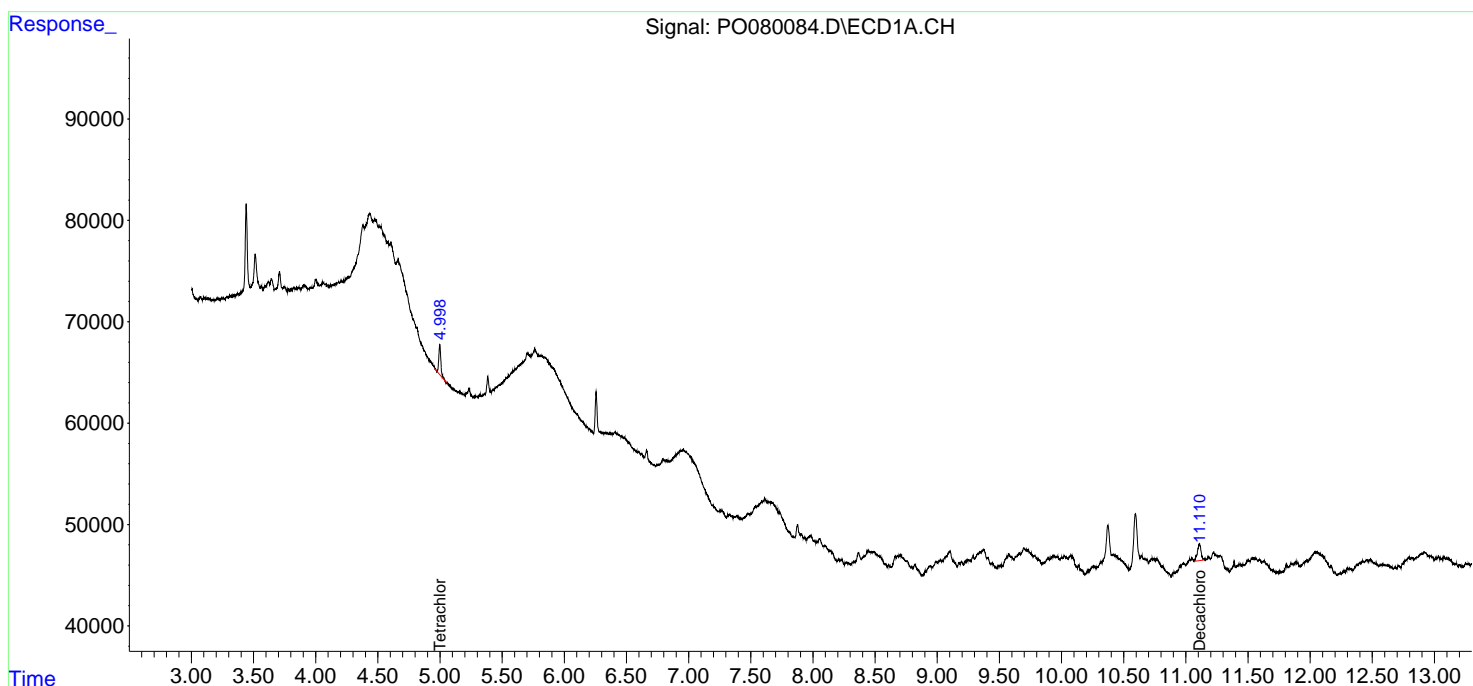
Data Path : Z:\pestpcbsrv\HPCHEM1\ECD_0\Data\PO080221\
 Data File : PO080084.D
 Signal(s) : Signal #1: ECD1A.CH Signal #2: ECD2B.CH
 Acq On : 03 Aug 2021 00:57
 Operator : DD\AJ
 Sample : M3247-06 10X
 Misc :
 ALS Vial : 31 Sample Multiplier: 1

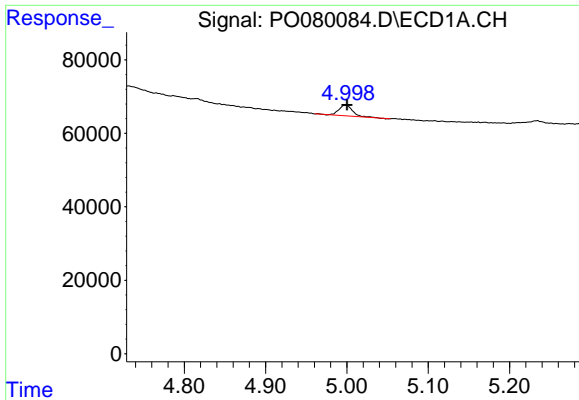
Instrument :
 ECD_O
ClientSampled :
 HIA632R(1-1)

Manual Integrations
APPROVED
 mohammad
 8/3/2021 3:10:24 PM

Integration File signal 1: autoint1.e
 Integration File signal 2: autoint2.e
 Quant Time: Aug 03 02:21:36 2021
 Quant Method : Z:\pestpcbsrv\HPCHEM1\ECD_0\methods\PO072821.M
 Quant Title : GC EXTRACTABLES
 QLast Update : Wed Jul 28 18:45:36 2021
 Response via : Initial Calibration
 Integrator: ChemStation 6890 Scale Mode: Small noise peaks clipped

Volume Inj. : 2 µl
 Signal #1 Phase : ZB-MR1 Signal #2 Phase: ZB-MR2
 Signal #1 Info : 30Mx0.32mmx 0.50µ Signal #2 Info : 30M x 0.32mm x 0.25µm





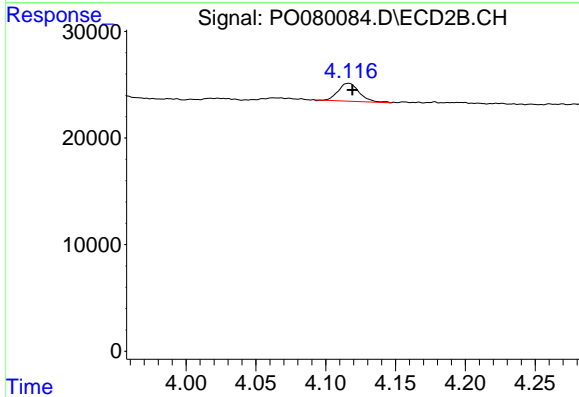
#1 Tetrachloro-m-xylene

R.T.: 4.999 min
 Delta R.T.: -0.001 min
 Response: 33379
 Conc: 0.55 ng/ml

Instrument :
 ECD_O
 ClientSampleId :
 HIA632R(1-1)

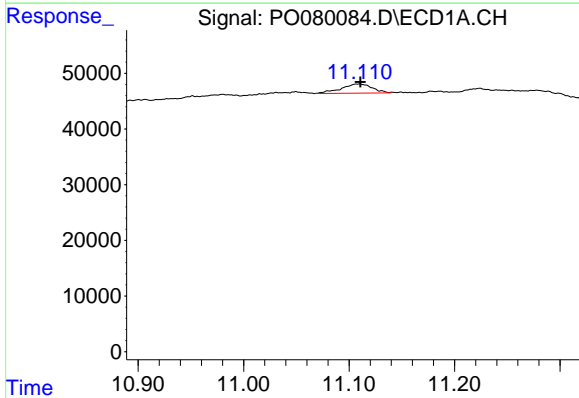
Manual Integrations
 APPROVED

mohammad
 8/3/2021 3:10:24 PM



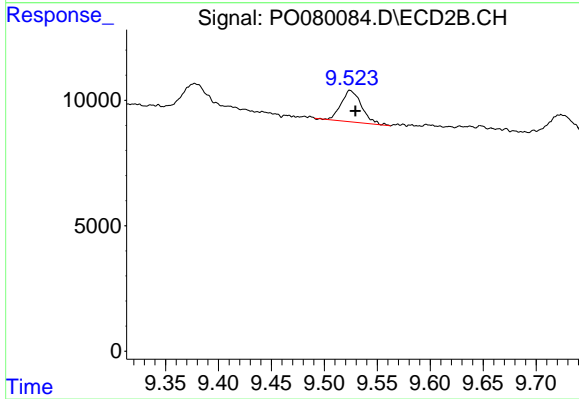
#1 Tetrachloro-m-xylene

R.T.: 4.116 min
 Delta R.T.: -0.003 min
 Response: 17618
 Conc: 0.77 ng/ml



#2 Decachlorobiphenyl

R.T.: 11.110 min
 Delta R.T.: 0.000 min
 Response: 33682
 Conc: 0.72 ng/ml m



#2 Decachlorobiphenyl

R.T.: 9.525 min
 Delta R.T.: -0.005 min
 Response: 16823
 Conc: 0.81 ng/ml