

Data Path : Z:\pestpcbsrv\HPCHEM1\ECD_0\Data\P0080221\
 Data File : P0080089.D
 Signal(s) : Signal #1: ECD1A.CH Signal #2: ECD2B.CH
 Acq On : 03 Aug 2021 2:23
 Operator : DD\AJ
 Sample : M3247-21 10X
 Misc :
 ALS Vial : 36 Sample Multiplier: 1

Instrument :
 ECD_0
 ClientSampleId :
 HEF3176(2-2)

Integration File signal 1: autoint1.e
 Integration File signal 2: autoint2.e
 Quant Time: Aug 03 05:37:37 2021
 Quant Method : Z:\pestpcbsrv\HPCHEM1\ECD_0\methods\P0072821.M
 Quant Title : GC EXTRACTABLES
 QLast Update : Wed Jul 28 18:45:36 2021
 Response via : Initial Calibration
 Integrator: ChemStation 6890 Scale Mode: Small noise peaks clipped

Volume Inj. : 2 µl
 Signal #1 Phase : ZB-MR1 Signal #2 Phase: ZB-MR2
 Signal #1 Info : 30Mx0.32mmx 0.50µ Signal #2 Info : 30M x 0.32mm x 0.25µm

Compound	RT#1	RT#2	Resp#1	Resp#2	ng/ml	ng/ml

System Monitoring Compounds						
1) SA Tetrachlo...	5.001	4.118	758153	359070	12.582	15.679
2) SA Decachlor...	11.111	9.534	695091	340797	14.818	16.399

Target Compounds

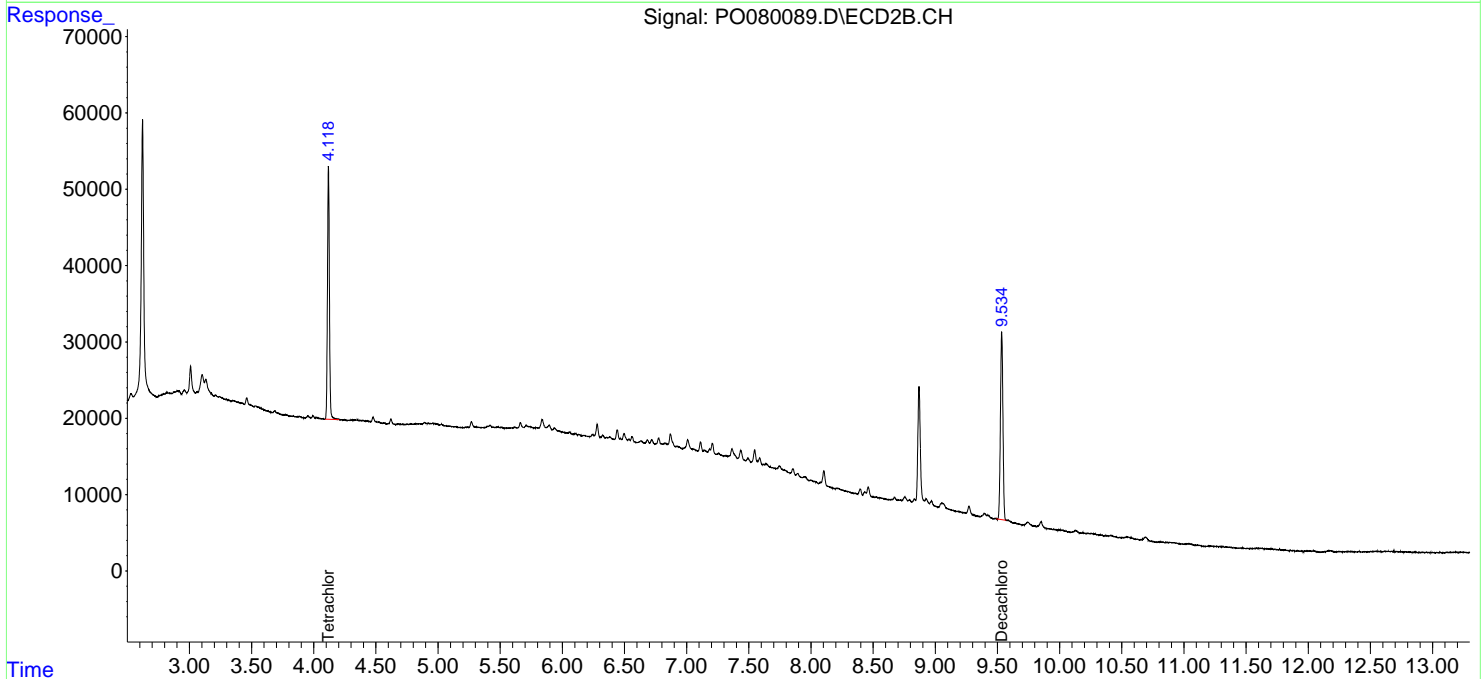
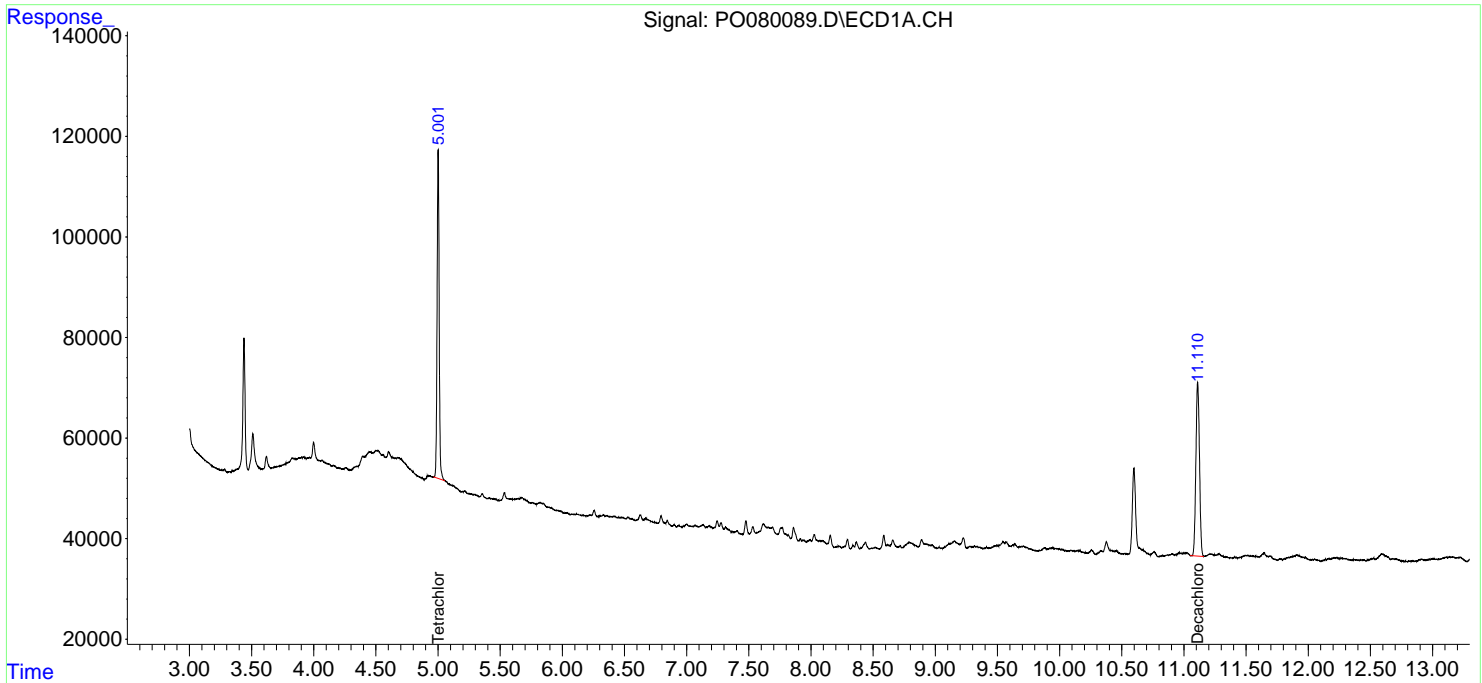
(f)=RT Delta > 1/2 Window (#)=Amounts differ by > 25% (m)=manual int.

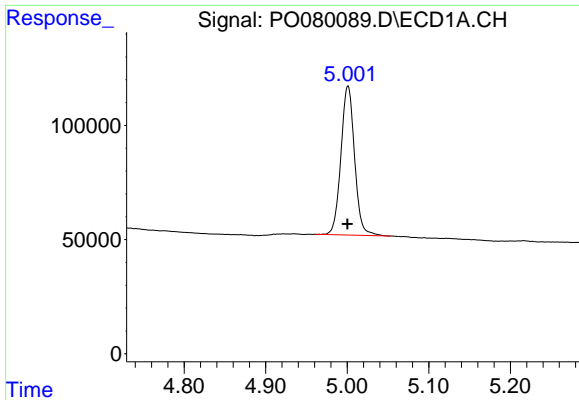
Data Path : Z:\pestpcbsrv\HPCHEM1\ECD_0\Data\P0080221\
 Data File : P0080089.D
 Signal(s) : Signal #1: ECD1A.CH Signal #2: ECD2B.CH
 Acq On : 03 Aug 2021 2:23
 Operator : DD\AJ
 Sample : M3247-21 10X
 Misc :
 ALS Vial : 36 Sample Multiplier: 1

Instrument :
 ECD_O
 ClientSampleId :
 HEF3176(2-2)

Integration File signal 1: autoint1.e
 Integration File signal 2: autoint2.e
 Quant Time: Aug 03 05:37:37 2021
 Quant Method : Z:\pestpcbsrv\HPCHEM1\ECD_0\methods\P0072821.M
 Quant Title : GC EXTRACTABLES
 QLast Update : Wed Jul 28 18:45:36 2021
 Response via : Initial Calibration
 Integrator: ChemStation 6890 Scale Mode: Small noise peaks clipped

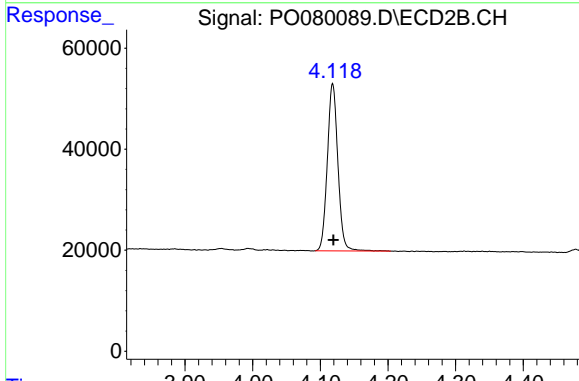
Volume Inj. : 2 µl
 Signal #1 Phase : ZB-MR1 Signal #2 Phase: ZB-MR2
 Signal #1 Info : 30Mx0.32mmx 0.50µ Signal #2 Info : 30M x 0.32mm x 0.25µm



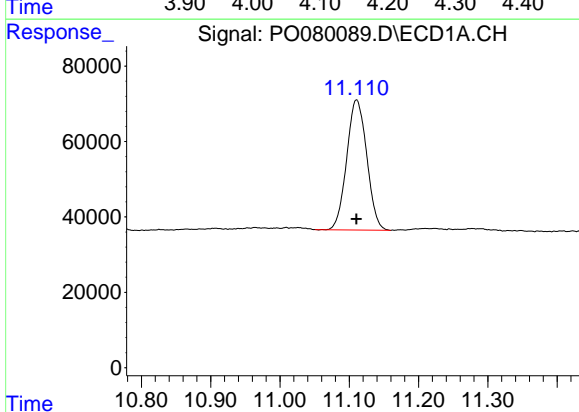


#1 Tetrachloro-m-xylene
 R.T.: 5.001 min
 Delta R.T.: 0.000 min
 Response: 758153
 Conc: 12.58 ng/ml

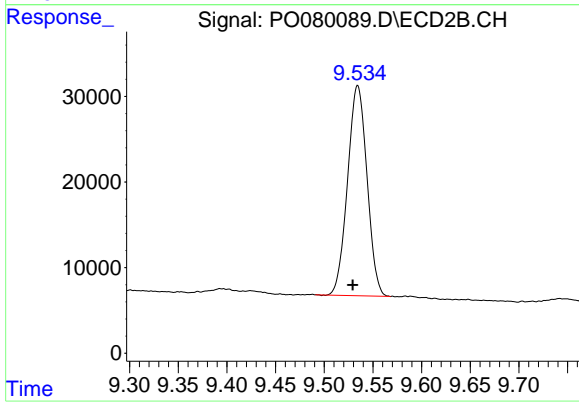
Instrument :
 ECD_O
ClientSampleId :
 HEF3176(2-2)



#1 Tetrachloro-m-xylene
 R.T.: 4.118 min
 Delta R.T.: 0.000 min
 Response: 359070
 Conc: 15.68 ng/ml



#2 Decachlorobiphenyl
 R.T.: 11.111 min
 Delta R.T.: 0.000 min
 Response: 695091
 Conc: 14.82 ng/ml



#2 Decachlorobiphenyl
 R.T.: 9.534 min
 Delta R.T.: 0.005 min
 Response: 340797
 Conc: 16.40 ng/ml